



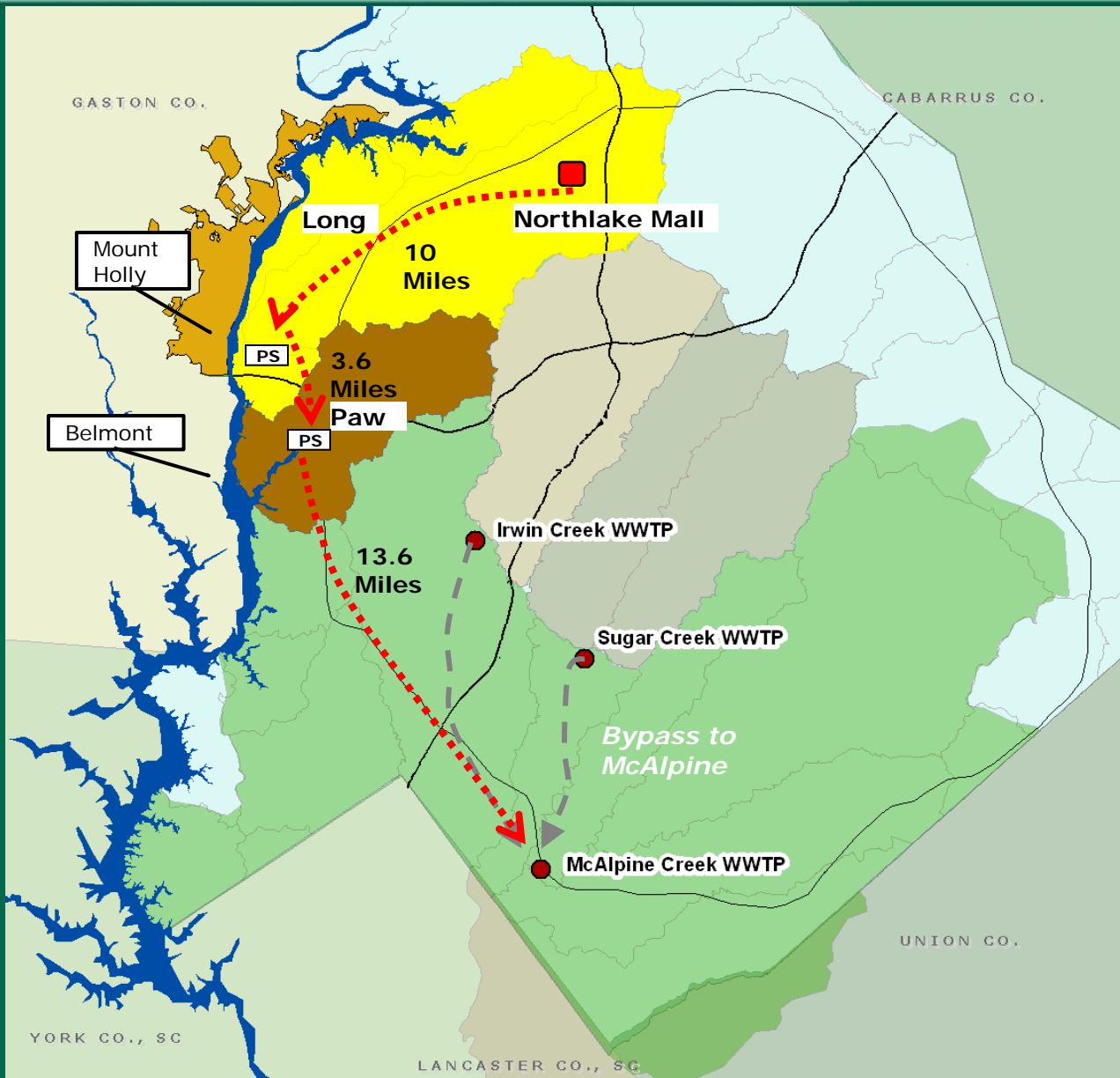
CHARLOTTE
CHARLOTTE-MECKLENBURG
UTILITIES

Long Creek Regional Wastewater Treatment Plant Project Update

July 25, 2011

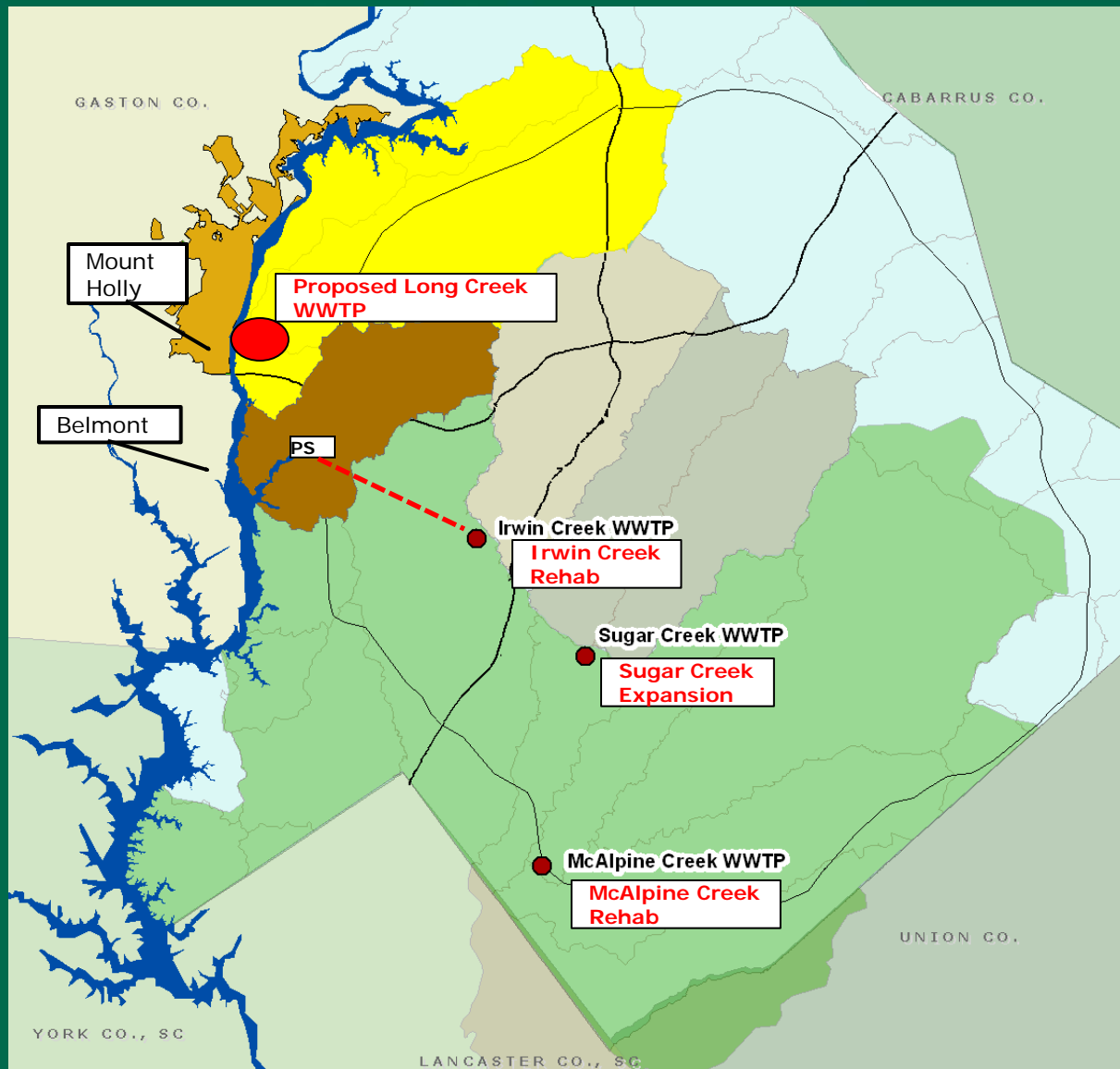
- Need for the Project
- Regional agreements – Approach & Status
 - Belmont
 - Mount Holly
 - ReVenture/Clariant
- Next Steps

Need for Project



Current Situation:

- Piping flow 27 miles
- 2 Pumping stations
- Mount Holly plant
- Belmont plant
- Clariant plant
- Flows are increasing
- Water quality concern



Plan Benefits:

- Eliminate 2 Plants
- Avoid new pipelines
- Improve water quality
- Provide for growth

Alternative:

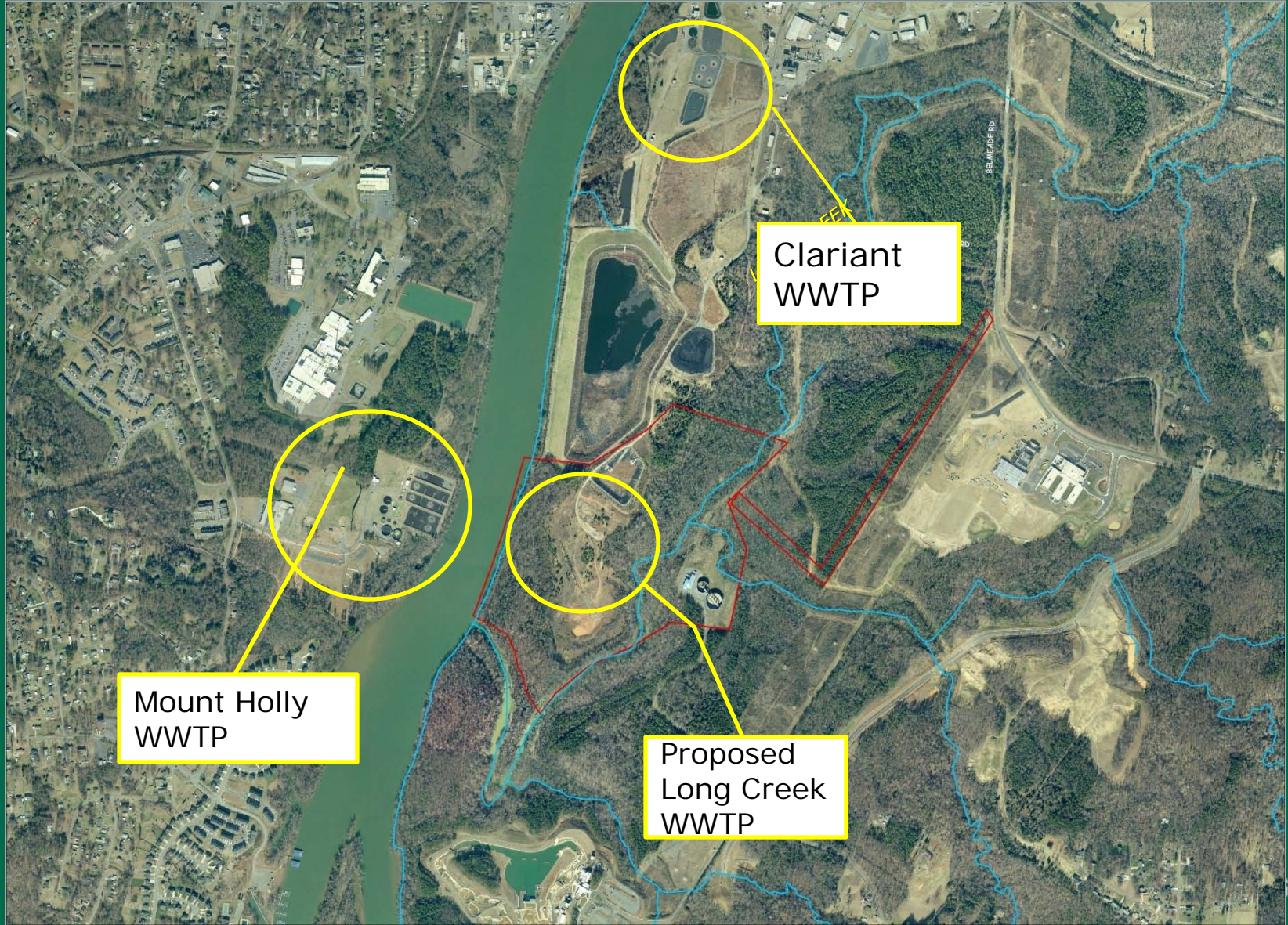
- New CMUD pipes
- Expand Irwin and/or McAlpine plant(s)
- Expand Mt Holly plant
- Upgrade Belmont plant

- State rules cap pounds of phosphorus & nitrogen for Lake Wylie
- All of the pounds of phosphorus & nitrogen are allocated to Belmont, Mount Holly, & Clariant
- If nutrient allocations are shared and a higher level of treatment is provided, regional wastewater needs can be met and water quality protected



- Trade upgraded treatment capacity for nutrient allocation which saves money for the towns
- Eliminate industrial discharge from Clariant by purchasing their nutrient allocation along with land for regional plant
- Keep CMUD capital costs less than costs required if regional plant is not built
- Towns pay for treatment based on actual costs/1,000 gallons treated

Location Map



- Belmont
 - Staff concurrence on Memo of Agreement
 - MOA to both councils for approval in August
 - Begin development of inter-local agreement
- Mount Holly
 - Staff negotiating terms
 - Still working
- Clariant/ReVenture
 - Staff near agreement on terms
 - State has agreed to nutrient allocation transfer
 - Still working

- CMUD:
 - Build & maintain pipe from Belmont to Charlotte
 - Treat up to 2 mgd of wastewater from Belmont
 - Agrees to provide up to 3 mgd additional future capacity with Belmont's participation in cost
- Belmont:
 - Build & operate pump station to pump wastewater to CMUD
 - Transfers nutrient allocation to CMUD
 - Decommissions existing plant
 - Pays CMUD for actual treatment O&M costs / 1,000 gallons treated



Location Map



- Continue on-going work to acquire land, complete environmental work, detailed planning
- Towns are facing state deadlines for upgrading plants
- Delay construction of Long Creek plant until growth creates need for capacity
- Work with state and towns on schedule for their upgrade requirements

- Belmont MOA to Council in August
- Finalize & Submit Environmental Impact Statement
- Continue negotiations with Mount Holly, ReVenture/Clariant
- Begin work on inter-local agreement with Belmont