

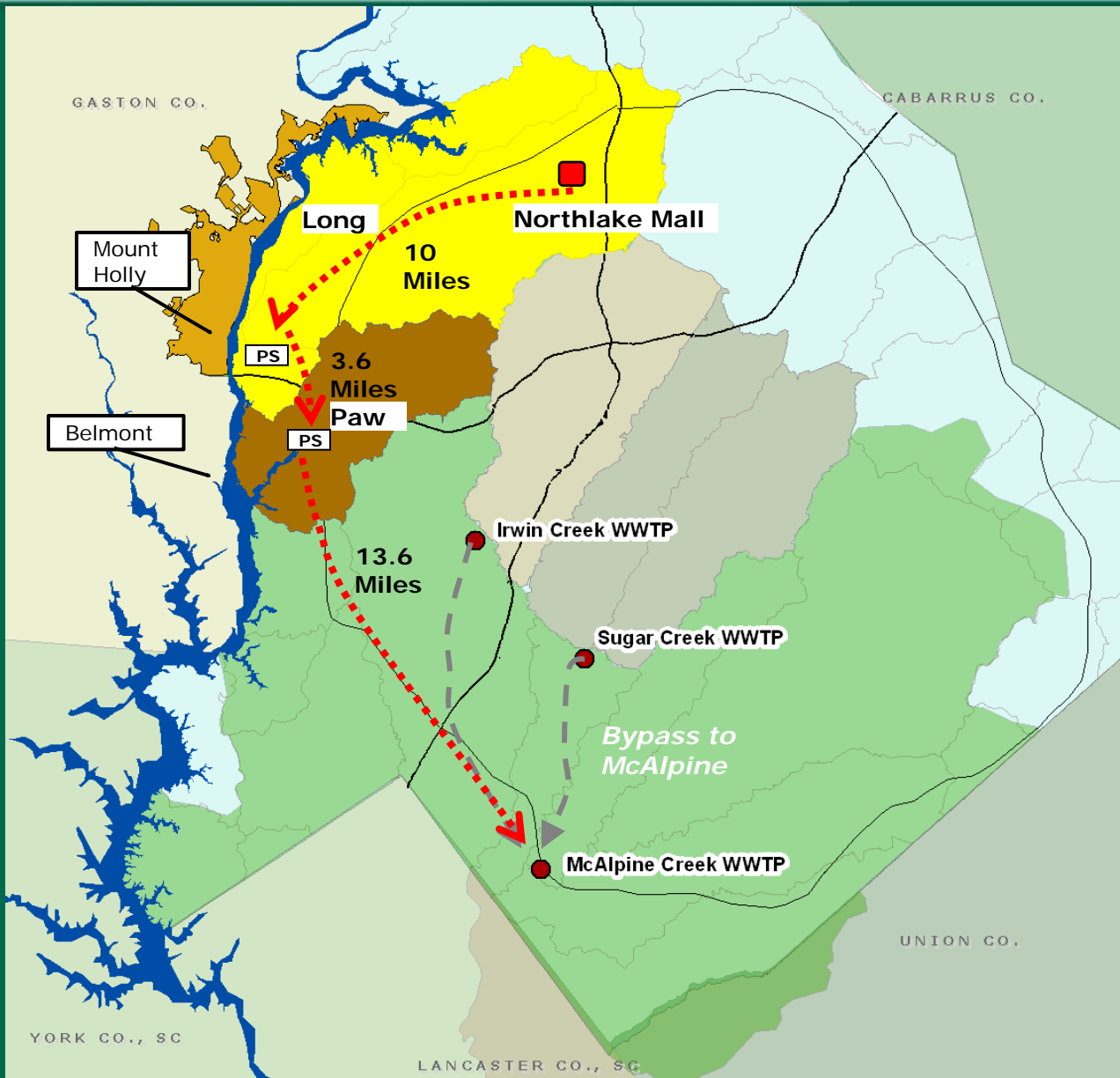


CHARLOTTE
CHARLOTTE-MECKLENBURG
UTILITIES

Long Creek Regional Wastewater Treatment Plant

Stakeholder Update October 27, 2011

- Project History/Stakeholder Involvement
- Regional Agreements – Approach & Status
 - Belmont
 - Mount Holly
 - ReVenture/Clariant
- Next Steps



History

- Project discussed for last 30 years

Current Situation:

- Piping flow 27 miles
- 2 Pumping stations
- Mount Holly plant
- Belmont plant
- Clariant plant
- Flows are increasing
- Water quality concern

- Diverse group of stakeholders convened in 2007/2008 to discuss project
- Met six times
 - Studied need for project
 - Discussed potential locations
 - Evaluated alternatives
- Provided feedback on project and communicated with constituents

Stakeholder Group

- American & Efird
- City of Belmont
- Catawba Lands Conservancy
- Catawba Riverkeeper Foundation
- CMUD Advisory Committee
- Clariant
- Crosland
- Duke Energy
- Gaston County Chamber of Commerce
- Gaston County Planning Department
- Homeowners Associations
- Lake Wylie Marine Commission
- Mecklenburg County LEUSA
- Mecklenburg County Park and Recreation
- Mount Holly Community Development Foundation
- NC Fish & Wildlife
- NC DENR
- City of Rock Hill
- SC DHEC
- Sierra Club
- Town of Stanley
- US National Whitewater Center
- York County, SC

- Two studies done in mid-2000s that determined need for capacity increases
- Mecklenburg Wastewater Capacity Study
 - Increased flows will result in needed upgrades to existing plants
 - Identified opportunity for regional plant in Long Creek basin
- Gaston/Mecklenburg Regional Feasibility Study
 - More capacity needed
 - Regional solution may be feasible
 - Study included seven alternatives

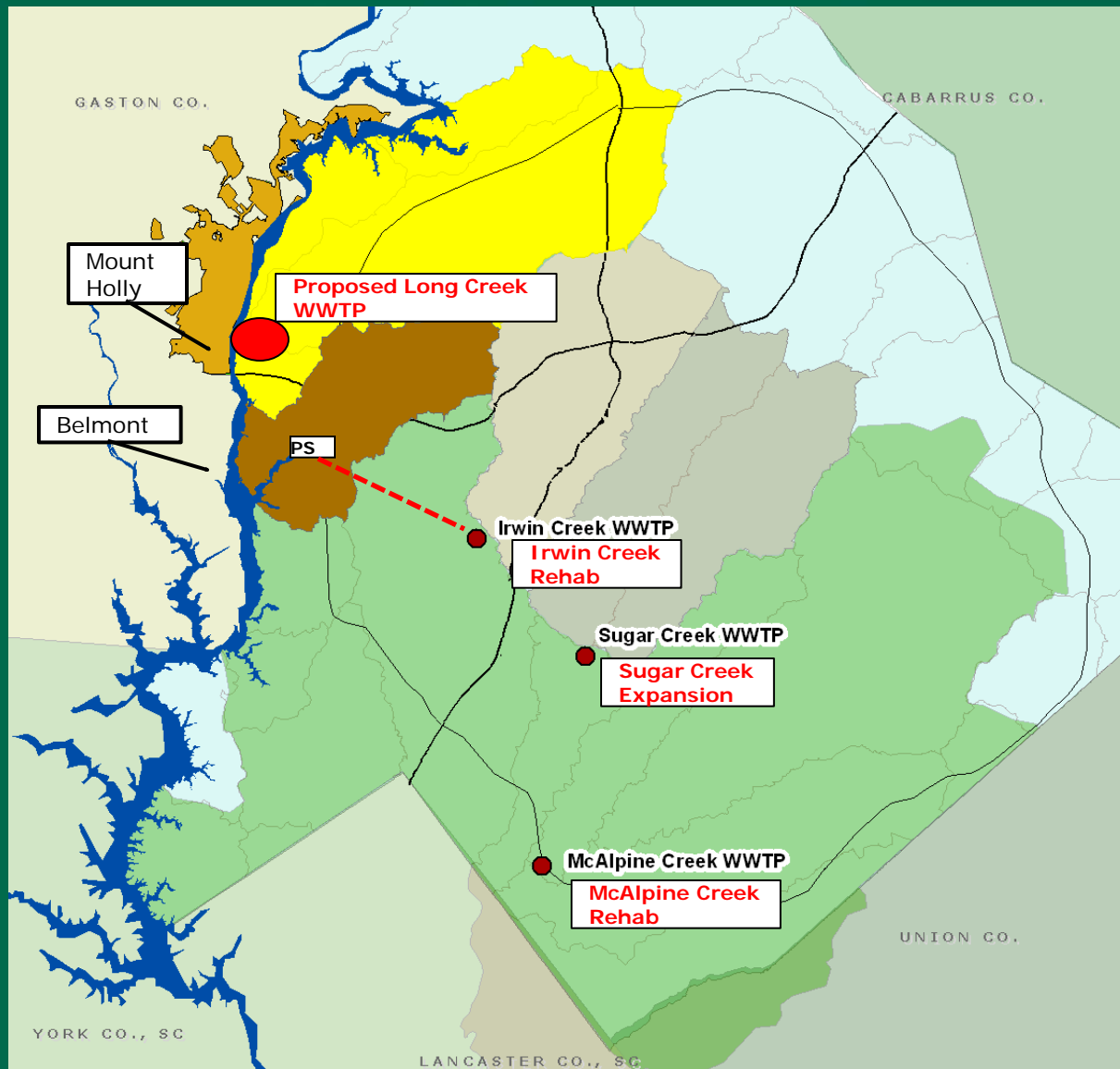
- Environmental Impact Statement
 - Direct Impacts
 - Secondary and Cumulative Impacts
 - Mitigation Measures
- Direct Impact Reductions of Regional WWTP
 - Would be built on disturbed site
 - Maximize Catawba and Long Creek buffer width
 - No WWTP facilities within 100 year floodplain or on wetlands
 - Stringent sediment and erosion control measures
 - Stormwater controls

- Secondary and Cumulative Impacts
 - Fish and mussel survey – no endangered species
 - Map historical sites
 - Map critical natural resource areas
 - Endangered flora species survey
 - Map land cover such as forested area
 - Wetland determinations
 - Plant and wildlife community assessment

- Potential Minimization of Secondary & Cumulative Impacts
 - Open space protection policies and programs
 - Riparian buffer protection
 - Post-construction stormwater ordinances in place
 - Encouragement of LID in watershed

- Regional Plant Summary
 - Advanced treatment processes to achieve low concentration of TN and TP
 - State-of-the-art treatment technologies
 - Enhance reliability of treatment
 - Reduces existing discharges
 - Increase water volume on Lake Wylie

- Economy
 - Growth has slowed significantly, impacting the construction schedule
- ReVenture project announced
- Changes in regulatory environment
 - According to the TMDL, nutrient limits are now included in Belmont and Mt. Holly NPDES permits.



Plan Benefits:

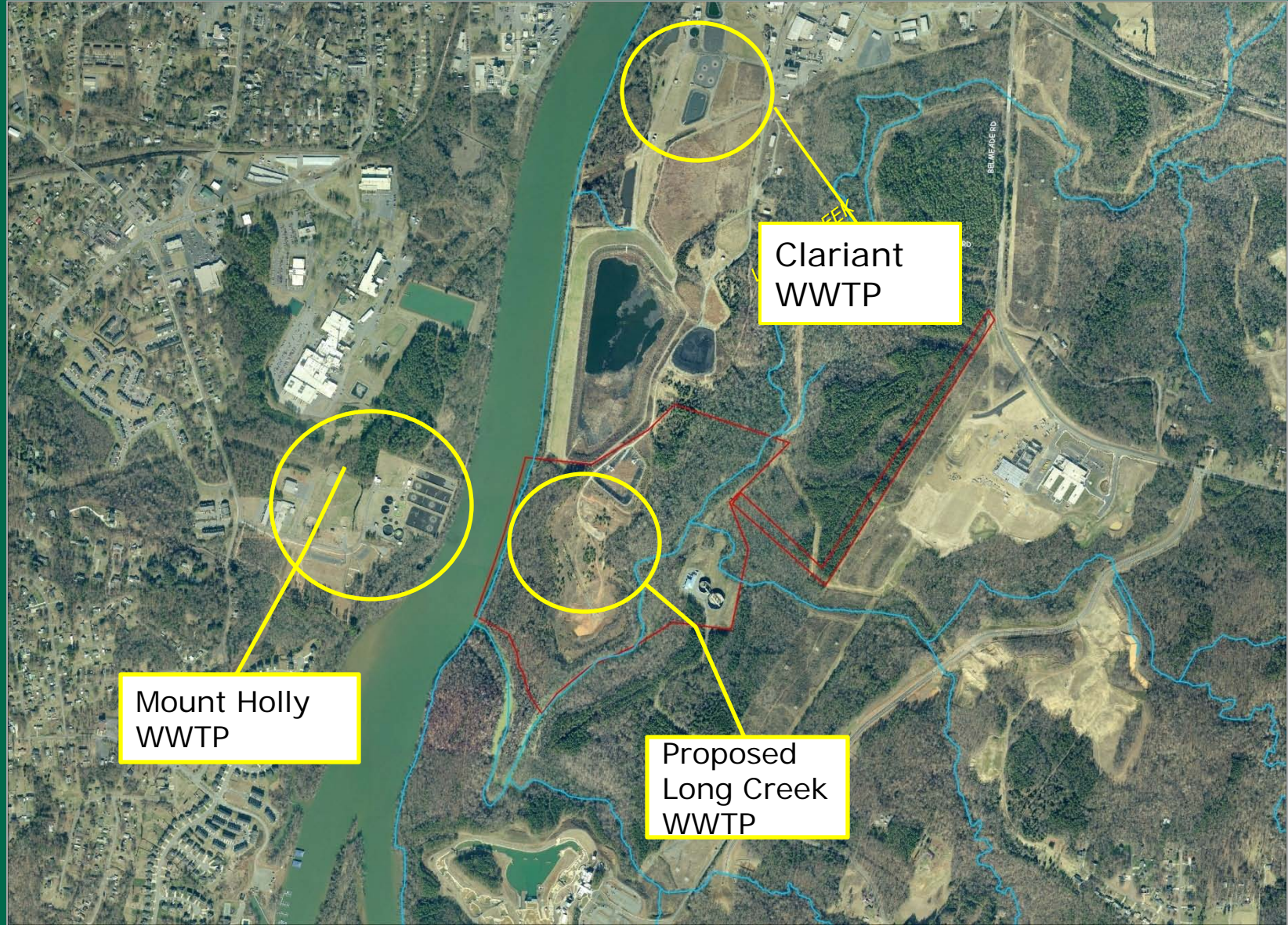
- Eliminate 2 or 3 plants depending on final agreements
- Avoid new pipelines
- Improve water quality
- Provide for growth

- TMDL limits pounds of phosphorus & nitrogen for Lake Wylie
- New Long Creek WWTP will include technology to treat wastewater to higher level of treatment thus providing capacity for growth while meeting flow needs and protecting water quality.



- Trade upgraded treatment capacity for nutrient allocation which saves money for the towns
- Eliminate industrial discharge from Clariant by purchasing their nutrient allocation along with land for regional plant
- Keep CMUD capital costs less than costs required if regional plant is not built
- Towns pay for treatment based on actual costs/1,000 gallons treated

Location Map



Mount Holly
WWTP

Clariant
WWTP

Proposed
Long Creek
WWTP

- Belmont
 - MOA approved in August
 - Development of inter-local agreement underway
- Mount Holly
 - Staff negotiating terms
 - Still working
- Clariant/ReVenture
 - Staff near agreement on terms
 - State has agreed to nutrient allocation transfer
 - Still working

- CMUD:
 - Build & maintain pipe from Belmont to Charlotte
 - Treat up to 2 mgd of wastewater from Belmont
 - Agrees to provide up to 3 mgd additional future capacity with Belmont's participation in cost
- Belmont:
 - Build & operate pump station to pump wastewater to CMUD
 - Transfers nutrient allocation to CMUD
 - Decommissions existing plant
 - Pays CMUD for actual treatment O&M costs / 1,000 gallons treated



Location Map



- Finalize & Submit EIS
 - Will go to state by the end of 2011
- Continue discussions with Mount Holly, ReVenture/Clariant
- Obtain EIS Record of Decision – Nov 2012
- Begin detailed engineering – 1Q2013
- Time construction with development