



**CHARLOTTE-MECKLENBURG POLICE DEPARTMENT
MONTHLY SUMMARY: OCTOBER 2009**

**Rodney Monroe
Chief of Police**

INDEX OFFENSES REPORTED TO CHARLOTTE-MECKLENBURG POLICE DEPARTMENT

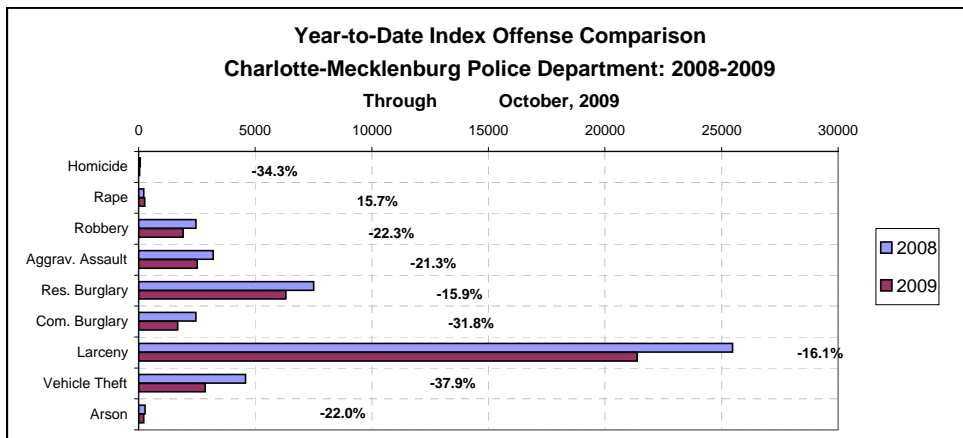
October, 2009 INDEX OFFENSES	# THIS MONTH	# THIS INDEX	# LAST MONTH	MONTHLY % CHANGE	SAME MONTH LAST YEAR	MONTHLY % CHANGE	THIS YEAR TO DATE	LAST YEAR TO DATE	ANNUAL % CHANGE
HOMICIDE (MURDER & NON- NEGLIGENT MANSLAUGHTER)*	4	0.1%	5	-20.0%	5	-20.0%	44	67	-34.3%
RAPE TOTAL	22	0.7%	25	-12.0%	21	4.8%	258	223	15.7%
ACTUAL	19	0.6%	23	-17.4%	18	5.6%	234	204	14.7%
ATTEMPT	3	0.1%	2	50.0%	3	0.0%	24	19	26.3%
ROBBERY TOTAL	183	5.5%	179	2.2%	272	-32.7%	1908	2456	-22.3%
ARMED	136	4.1%	144	-5.6%	236	-42.4%	1509	2029	-25.6%
STRONG-ARM	47	1.4%	35	34.3%	36	30.6%	399	427	-6.6%
AGGRAVATED ASSAULT TOTAL	241	7.2%	223	8.1%	320	-24.7%	2514	3193	-21.3%
BURGLARY TOTAL	812	24.4%	681	19.2%	958	-15.2%	7993	9972	-19.8%
RESIDENTIAL	660	19.8%	633	4.3%	732	-9.8%	6316	7512	-15.9%
COMMERCIAL	152	4.6%	48	216.7%	226	-32.7%	1677	2460	-31.8%

FORCE	645	19.4%	527	22.4%	787	-18.0%	6449	8051	-19.9%
NO FORCE	117	3.5%	97	20.6%	111	5.4%	1063	1138	-6.6%
ATTEMPT	50	1.5%	57	-12.3%	60	-16.7%	575	783	-26.6%
LARCENY TOTAL	1851	55.6%	2115	-12.5%	2234	-17.1%	21382	25472	-16.1%
\$200 AND OVER	932	28.0%	1089	-14.4%	1121	-16.9%	10927	13257	-17.6%
\$50 TO \$200	381	11.4%	403	-5.5%	429	-11.2%	4004	4460	-10.2%
UNDER \$50	538	16.2%	623	-13.6%	684	-21.3%	6451	7755	-16.8%

FROM AUTO	800	24.0%	964	-17.0%	1046	-23.5%	10717	14012	-23.5%
BICYCLE	33	1.0%	37	-10.8%	22	50.0%	249	217	14.7%
SHOPLIFTING	313	9.4%	358	-12.6%	313	0.0%	3146	2629	19.7%
OTHERS	705	21.2%	756	-6.7%	853	-17.4%	7270	8614	-15.6%
VEHICLE THEFT TOTAL	205	6.2%	231	-11.3%	411	-50.1%	2850	4588	-37.9%
ARSON TOTAL	12	0.4%	14	-14.3%	20	-40.0%	216	277	-22.0%
TOTALS	3330	100.0%	3473	-4.1%	4241	-21.5%	37164	46248	-19.6%
VIOLENT PROPERTY	450 2880	13.5% 86.5%	432 3041	4.2% -5.3%	618 3623	-27.2% -20.5%	4723 32441	5939 40309	-20.5% -19.5%

NOTE: These totals include offenses reported to the Charlotte-Mecklenburg Police Department in accordance with the Uniform Crime Reporting (UCR) Program. Because the data in this report is primarily based on the automated Records Management System, cases counted this month may include offenses from previous months/years that were reclassified after investigation.

*Monthly and year-to-date homicide totals in this report reflect the month in which cases were counted or subtracted due to reclassification after an investigation was completed. They may not match exactly with totals based on when the original case occurred.

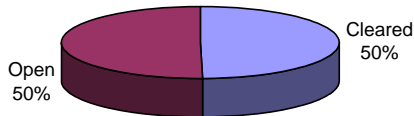


INDEX CLEARANCES REPORTED BY THE CHARLOTTE-MECKLENBURG POLICE DEPARTMENT

October, 2009 INDEX CLEARANCES	THIS MONTH:		LAST MONTH:		SAME MO. LAST YR:		THIS YEAR TO DATE:		LAST YEAR TO DATE:	
	NO.	%	NO.	%	NO.	%	NO.	%	NO.	%
MURDER & NON-NEGLIGENT MANSLAUGHTER ¹	2	50.0%	3	60.0%	7	140.0%	36	81.8%	42	62.7%
RAPE TOTAL	19	86.4%	23	92.0%	19	90.5%	201	77.9%	171	76.7%
ACTUAL	16	84.2%	22	95.7%	19	105.6%	187	79.9%	156	76.5%
ATTEMPT	3	100.0%	1	50.0%	0	0.0%	14	58.3%	15	78.9%
ROBBERY TOTAL	66	36.1%	60	33.5%	52	19.1%	566	29.7%	673	27.4%
ARMED	56	41.2%	44	30.6%	45	19.1%	422	28.0%	562	27.7%
STRONG-ARM	10	21.3%	16	45.7%	7	19.4%	144	36.1%	146	34.2%
AGGRAVATED ASSAULT TOTAL	165	68.5%	151	67.7%	151	47.2%	1546	61.5%	1617	50.6%
BURGLARY TOTAL	105	12.9%	36	5.3%	142	14.8%	879	11.0%	958	9.6%
RESIDENTIAL	78	11.8%	89	14.1%	115	15.7%	654	10.4%	710	9.5%
COMMERCIAL	27	17.8%	-53	-110.4%	27	11.9%	225	13.4%	248	10.1%
LARCENY TOTAL	422	22.8%	444	21.0%	433	19.4%	4150	19.4%	3772	14.8%
FROM AUTO	48	6.0%	46	4.8%	75	7.2%	549	5.1%	481	3.4%
BICYCLE	3	9.1%	5	13.5%	0	0.0%	28	11.2%	17	7.8%
SHOPLIFTING	220	70.3%	260	72.6%	192	61.3%	2192	69.7%	1846	70.2%
OTHERS	151	21.4%	133	17.6%	166	19.5%	1381	19.0%	1428	16.6%
VEHICLE THEFT TOTAL	40	19.5%	28	12.1%	56	13.6%	357	12.5%	547	11.9%
ARSON TOTAL	3	25.0%	3	21.4%	4	20.0%	63	29.2%	48	17.3%
TOTALS	822	24.7%	748	21.5%	864	20.4%	7798	21.0%	7828	16.9%
VIOLENT PROPERTY	252	56.0%	237	54.9%	229	37.1%	2349	49.7%	2503	42.1%
	570	19.8%	511	16.8%	635	17.5%	5449	16.8%	5325	13.2%

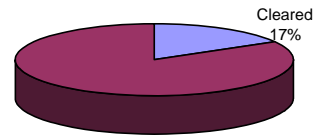
¹NOTE : Clearances are reported in accordance with Uniform Crime Report guidelines. Since clearances are not counted for UCR until they are entered in the Records Management system, any delays in entry of the documentation may result in some clearances being reported later in succeeding months.

**Year-to-Date Violent Index Clearance Rate
Charlotte-Mecklenburg Police Department: 2008**



Through October, 2009

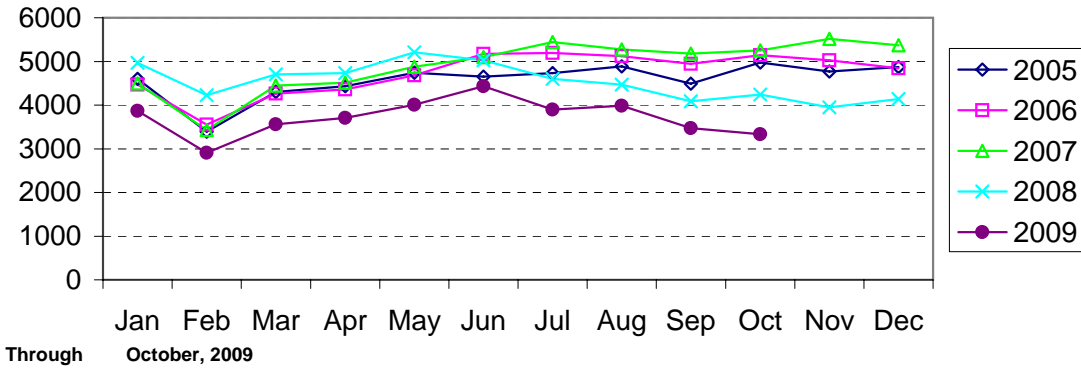
**Year-to-Date Property Index Clearance Rate
Charlotte-Mecklenburg Police Department: 2008**



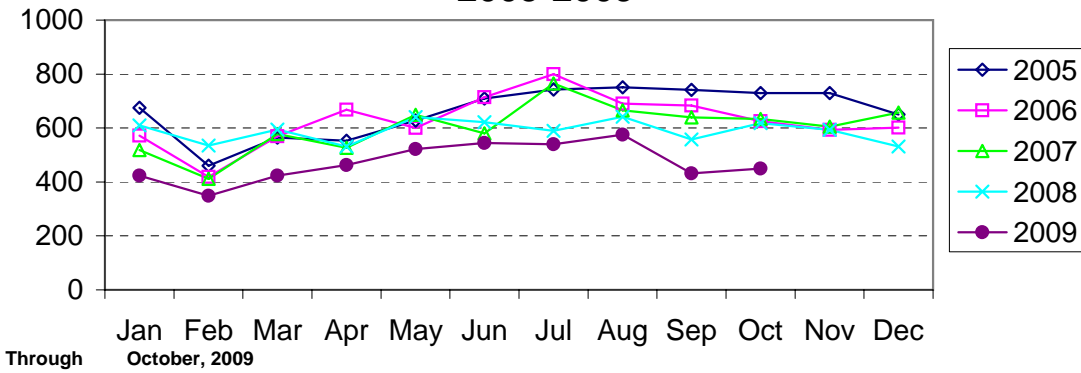
Through October, 2009

Clearance rates for crime reporting are calculated by dividing the number of crimes cleared during a designated time span by the number of crimes reported in the same period and converting the result to a percentage (multiplying by 100). Since cases from previous reporting periods can be cleared during the designated time span, the rate may be higher than 100%.

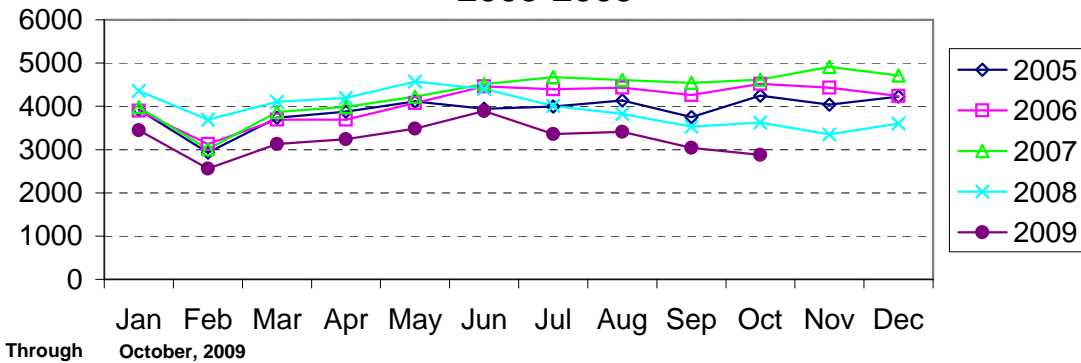
Index Offenses Reported by Month Charlotte-Mecklenburg Police Department: 2005-2009



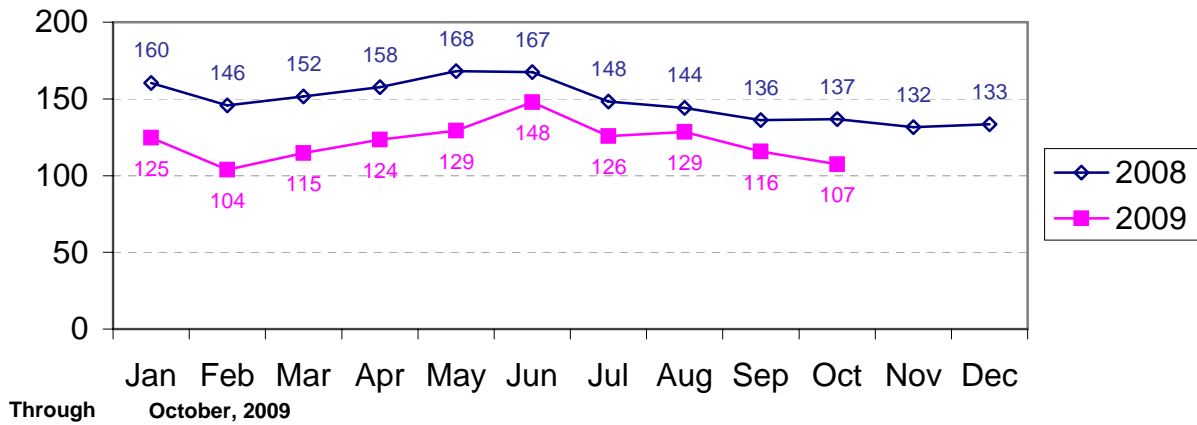
Violent Index Offenses Reported by Month Charlotte-Mecklenburg Police Department: 2005-2009



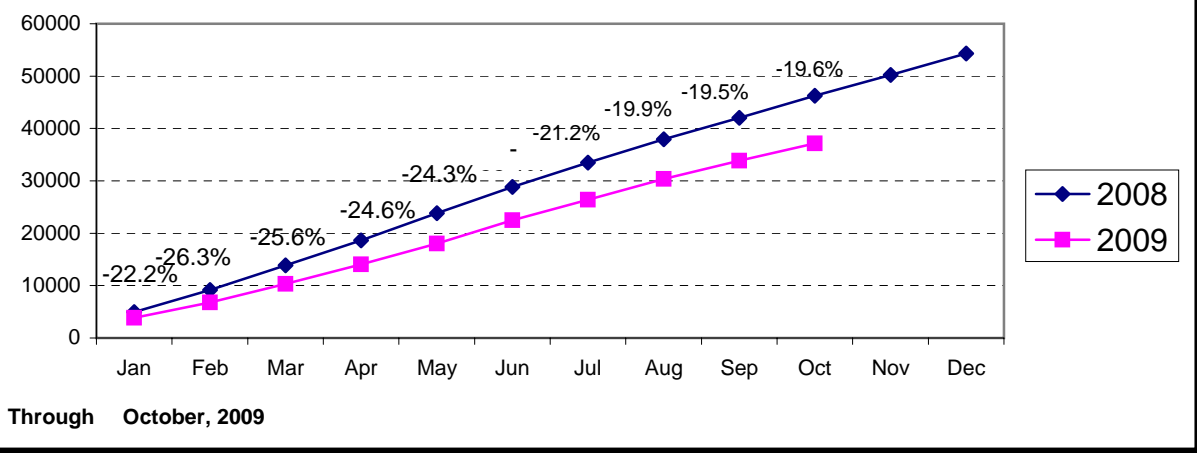
Property Index Offenses Reported by Month Charlotte-Mecklenburg Police Department: 2005-2009

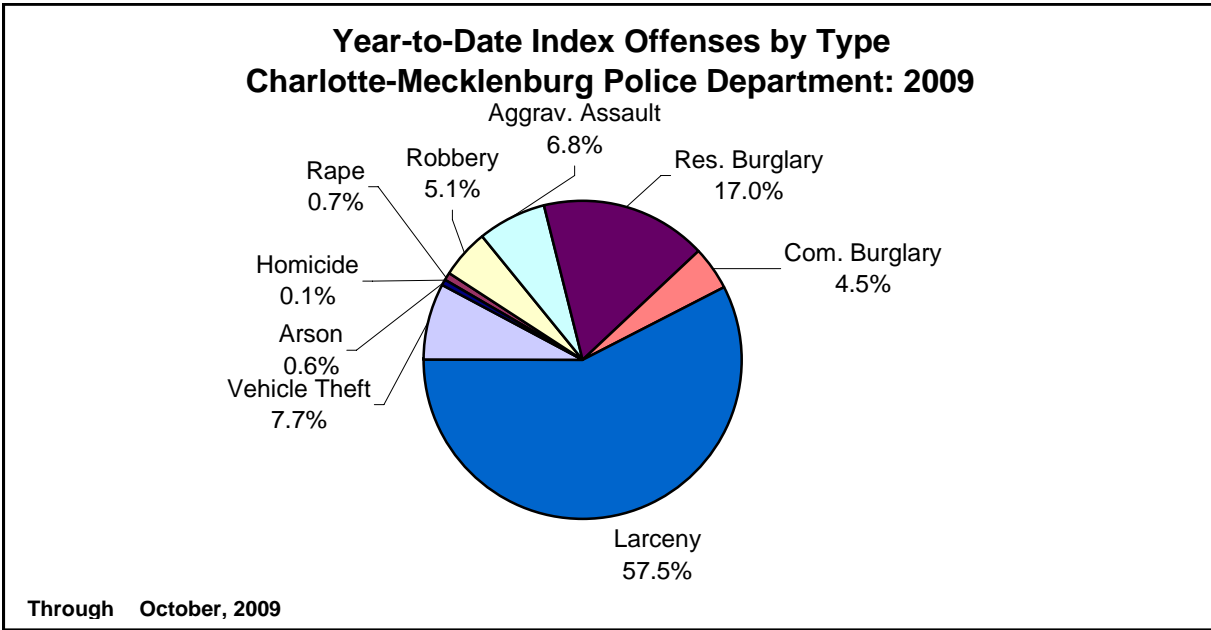
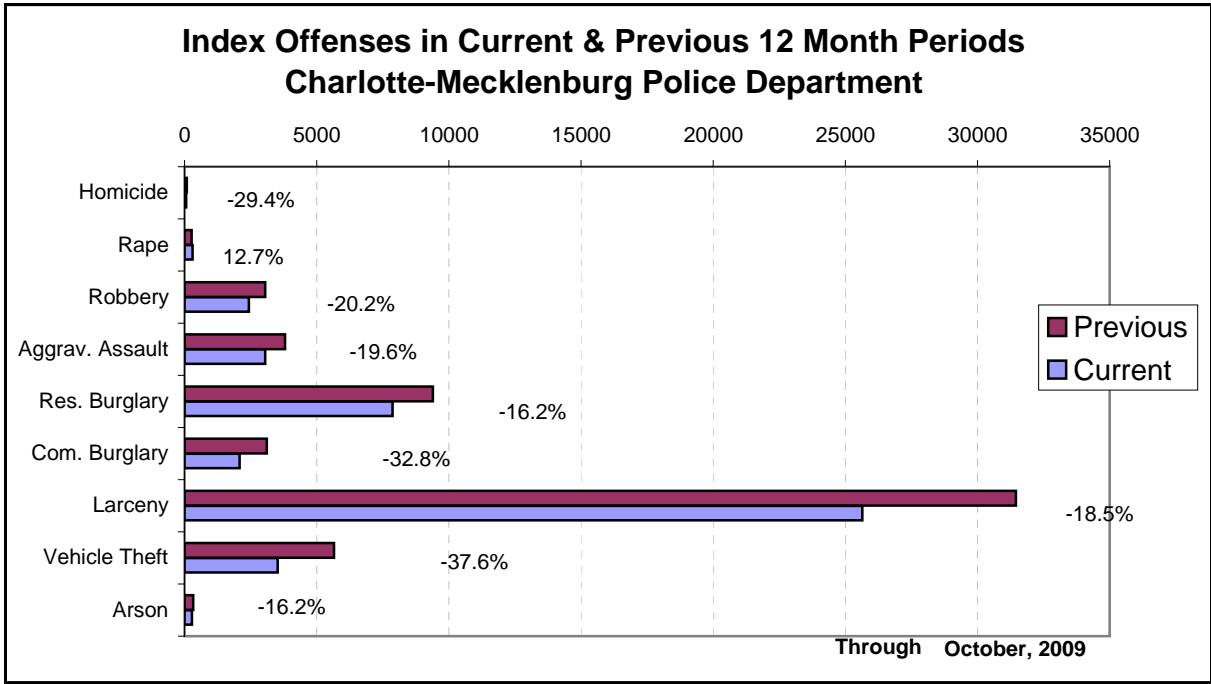


Index Offense Per Day Average by Month Charlotte-Mecklenburg Police Department: 2008-2009

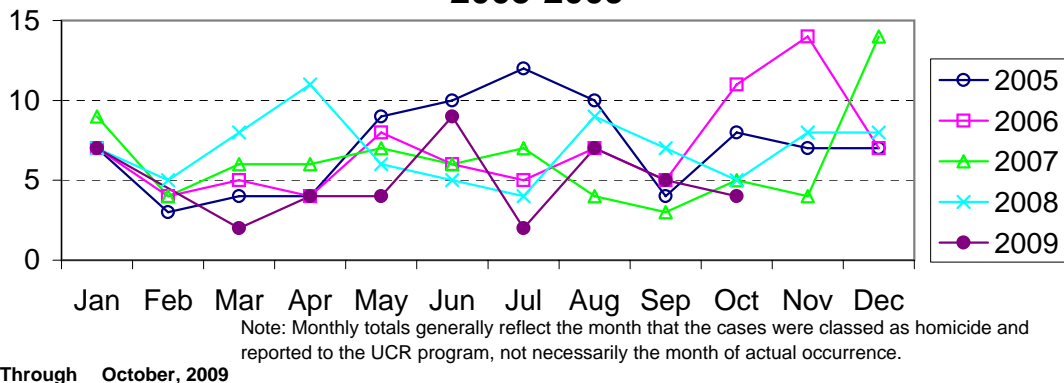


Index Offenses Year-to-Date Cumulative Totals Charlotte-Mecklenburg Police Department: 2008-2009

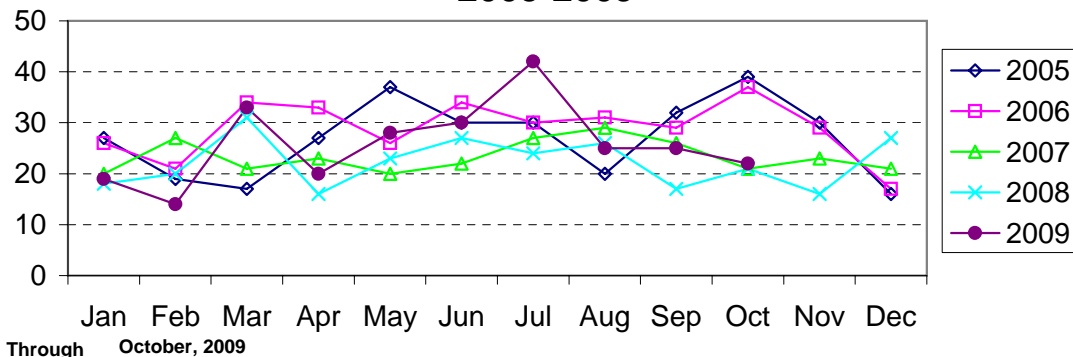




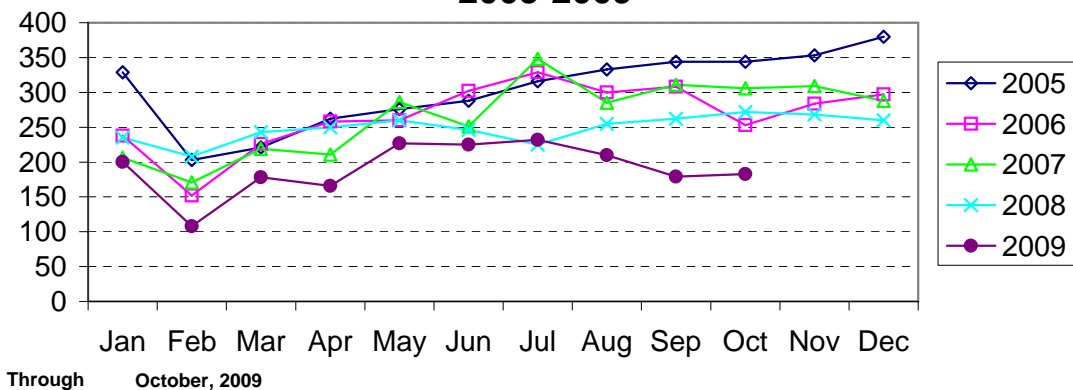
Homicide Reported by Month Charlotte-Mecklenburg Police Department: 2005-2009



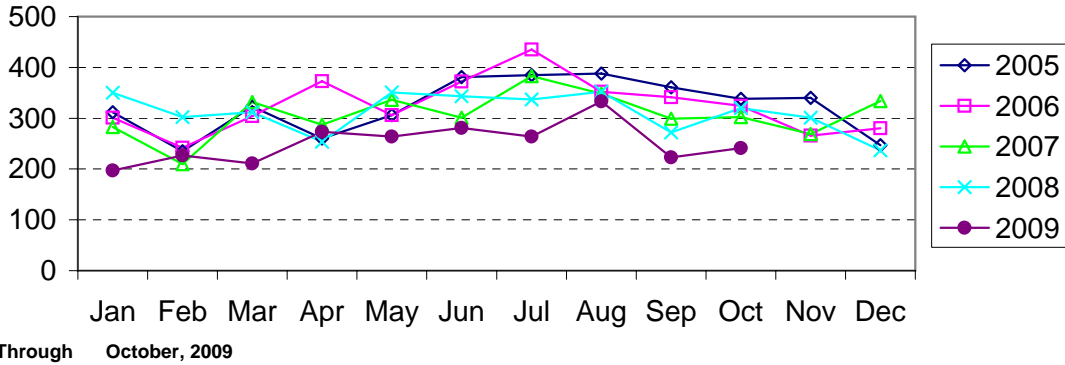
Rape Reported by Month Charlotte-Mecklenburg Police Department: 2005-2009



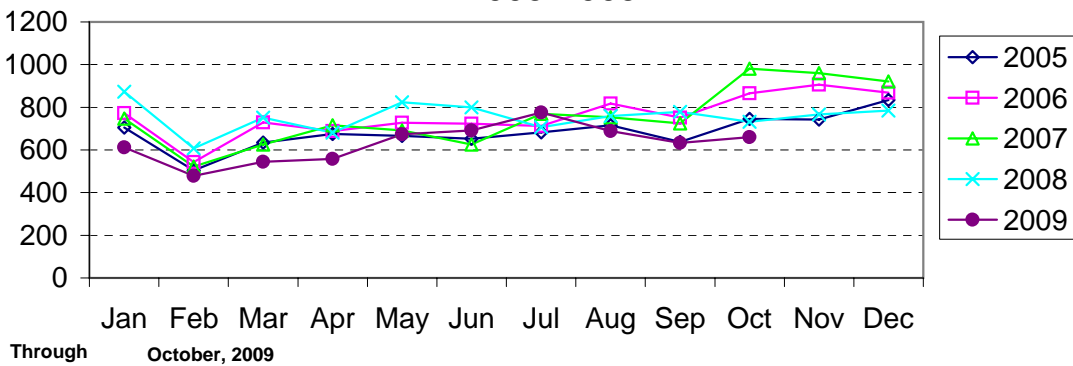
Robbery Reported by Month Charlotte-Mecklenburg Police Department: 2005-2009



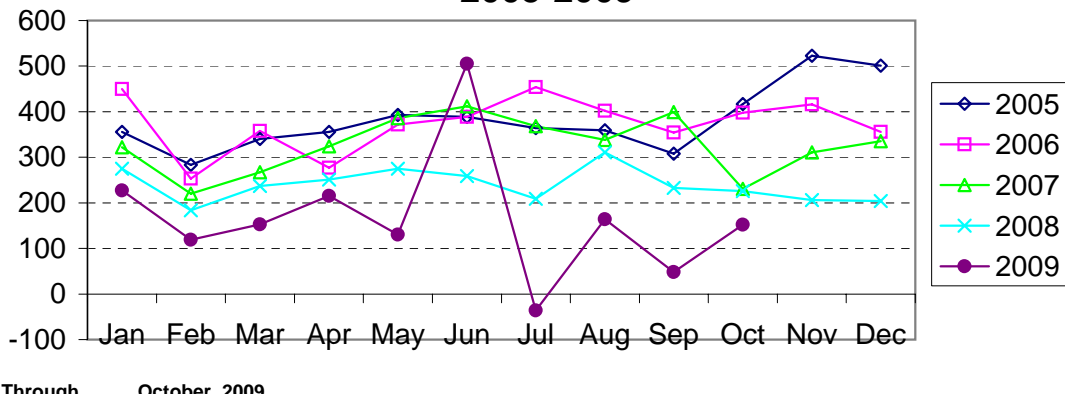
**Aggravated Assault Reported by Month
Charlotte-Mecklenburg Police Department:
2005-2009**



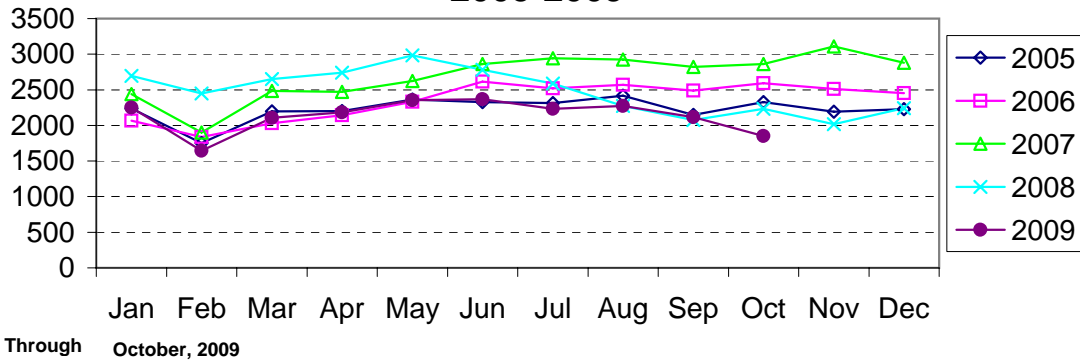
**Residential Burglary Reported by Month
Charlotte-Mecklenburg Police Department:
2005-2009**



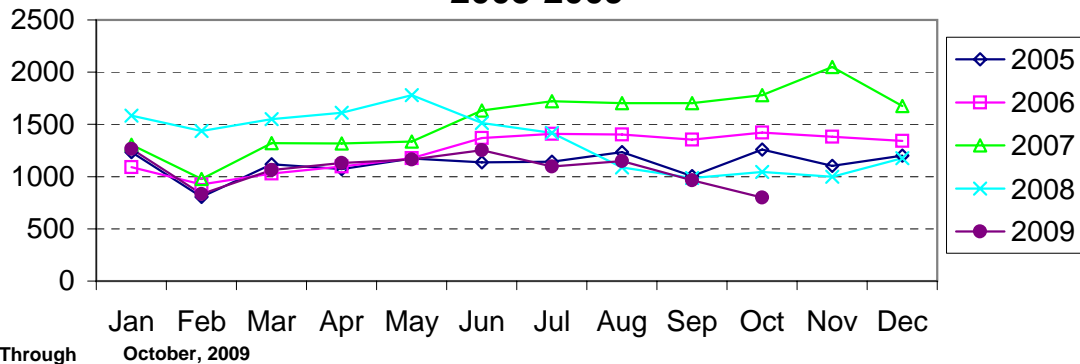
**Commercial Burglary Reported by Month
Charlotte-Mecklenburg Police Department:
2005-2009**



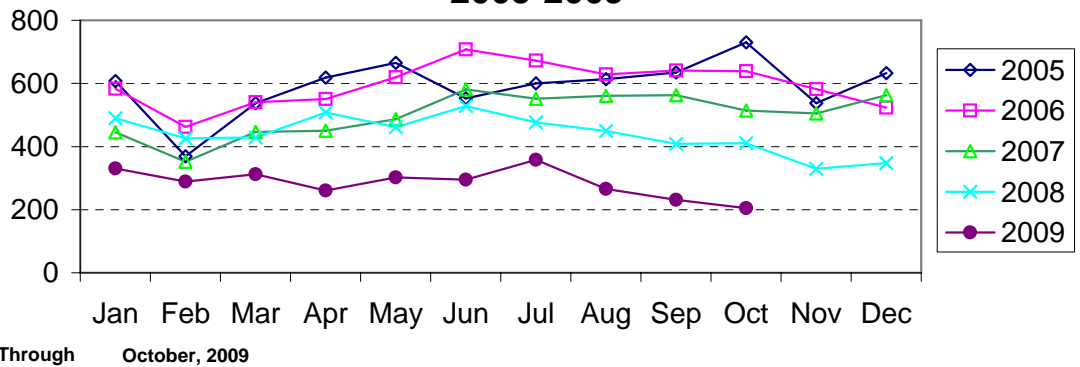
Larceny Reported by Month Charlotte-Mecklenburg Police Department: 2005-2009



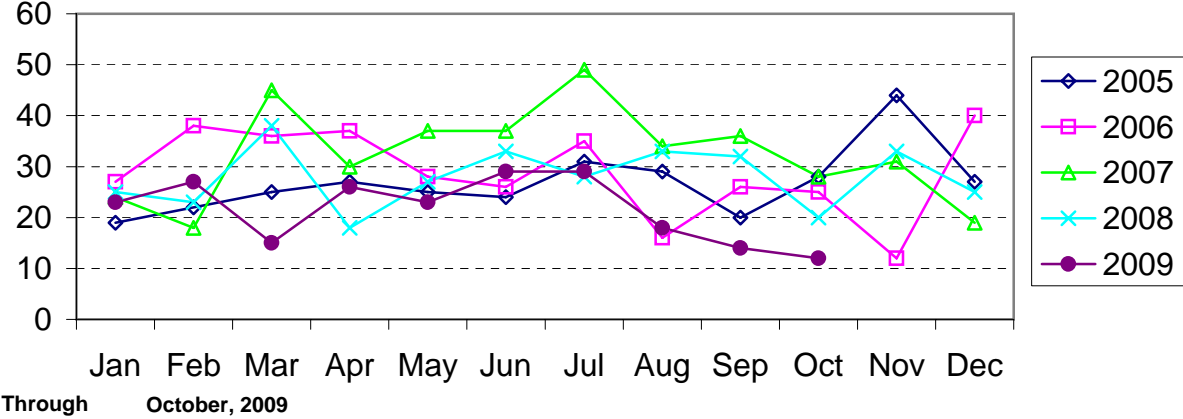
Larceny from Vehicle Reported by Month Charlotte-Mecklenburg Police Department: 2005-2009



Vehicle Theft Reported by Month Charlotte-Mecklenburg Police Department: 2005-2009



Arson Reported by Month Charlotte-Mecklenburg Police Department: 2005-2009



Index Offenses Reported By Division, October, 2009

Eastway Division (06)								
	<u>Current month</u>	<u>Previous Month</u>	<u>Percent Change</u>	<u>Same Month Last Year</u>	<u>Percent Change</u>	<u>Current Year-to-Date</u>	<u>Past Year-to-Date</u>	<u>Percent Change</u>
MURDER & NON-NEGLIGENT MANSLAUGHTER	0	1	-100.0%	1	-100.0%	8	7	14.3%
RAPE	0	0	NA	3	-100.0%	12	21	-42.9%
ROBBERY	24	22	9.1%	23	4.3%	219	255	-14.1%
ARMED	18	19	0.0%	21	-9.5%	182	218	-16.5%
STRONG-ARM	6	3	66.7%	2	150.0%	37	37	0.0%
AGGRAVATED ASSAULT	13	14	-7.1%	38	-65.8%	216	316	-31.6%
BURGLARY	66	53	24.5%	88	-25.0%	607	843	-28.0%
RESIDENTIAL	55	50	10.0%	67	-17.9%	501	660	-24.1%
COMMERCIAL	11	3	266.7%	21	-47.6%	106	183	-42.1%
LARCENY	117	143	-21.0%	164	-31.1%	1442	1957	-26.3%
FROM AUTO	39	61	-36.1%	68	-42.6%	660	983	-32.9%
BICYCLE	7	6	16.7%	2		37	27	37.0%
SHOPLIFTING	30	28	7.1%	34	-11.8%	277	360	-23.1%
OTHERS	41	48	-22.9%	60	-38.3%	468	587	-20.3%
VEHICLE THEFT	16	15	6.7%	31	-48.4%	259	415	-37.6%
ARSON	1	4	-75.0%	1	0.0%	18	24	-25.0%
TOTALS	237	252	-7.5%	349	-33.2%	2781	3838	-27.5%
VIOLENT PROPERTY	37 200	37 215	0.0% -8.8%	65 284	-43.1% -31.0%	455 2326	599 3239	-24.0% -28.2%

North Tryon Division (07)								
	<u>Current month</u>	<u>Previous Month</u>	<u>Percent Change</u>	<u>Same Month Last Year</u>	<u>Percent Change</u>	<u>Current Year-to-Date</u>	<u>Past Year-to-Date</u>	<u>Percent Change</u>
MURDER & NON-NEGLIGENT MANSLAUGHTER	2	-1	-300.0%	0	NA	8	6	33.3%
RAPE	3	3	0.0%	2	50.0%	36	21	71.4%
ROBBERY	29	26	11.5%	35	-17.1%	242	311	-22.2%
ARMED	19	25	-24.0%	34	-44.1%	194	274	-29.2%
STRONG-ARM	10	1	900.0%	1	900.0%	48	37	29.7%
AGGRAVATED ASSAULT	27	29	-6.9%	27	0.0%	302	279	8.2%
BURGLARY	84	-13	-746.2%	80	5.0%	598	796	-24.9%
RESIDENTIAL	65	55	18.2%	61	6.6%	510	554	-7.9%
COMMERCIAL	19	-68	-127.9%	19	0.0%	88	242	-63.6%
LARCENY	117	107	8.4%	119	-2.5%	1212	1316	-7.9%
FROM AUTO	42	42	0.0%	57	-26.3%	559	678	-17.6%
BICYCLE	1	0	NA	1		11	8	37.5%
SHOPLIFTING	20	13	53.8%	9	122.2%	144	90	60.0%
OTHERS	54	52	1.9%	52	1.9%	498	540	-7.8%
VEHICLE THEFT	15	14	7.1%	32	-53.1%	281	424	-33.7%
ARSON	2	2	0.0%	1	100.0%	25	18	38.9%
TOTALS	279	167	66.5%	296	-6.1%	2798	3171	-11.8%
VIOLENT PROPERTY	61 218	57 110	7.0% 97.3%	64 232	-4.7% -6.5%	588 2116	617 2554	-4.7% -17.1%

October, 2009

North Division (11)								
	<u>Current month</u>	<u>Previous Month</u>	<u>Percent Change</u>	<u>Same Month Last Year</u>	<u>Percent Change</u>	<u>Current Year to-Date</u>	<u>Past Year to-Date</u>	<u>Percent Change</u>
MURDER & NON-NEGLIGENT MANSLAUGHTER	0	0	NA	1	-100.0%	4	9	-55.6%
RAPE	0	4	-100.0%	2	-100.0%	22	12	83.3%
ROBBERY	10	9	11.1%	13	-23.1%	120	121	-0.8%
ARMED	9	7	28.6%	13	-30.8%	91	108	-15.7%
STRONG-ARM	1	2	-50.0%	0	NA	29	13	123.1%
AGGRAVATED ASSAULT	23	14	64.3%	13	76.9%	189	232	-18.5%
BURGLARY	94	96	-8.3%	108	-18.5%	934	1260	-25.9%
RESIDENTIAL	73	88	-22.7%	94	-27.7%	813	1015	-19.9%
COMMERCIAL	21	8	150.0%	14	42.9%	121	245	-50.6%
LARCENY	186	165	11.5%	177	4.0%	1923	2079	-7.5%
FROM AUTO	78	71	9.9%	74	5.4%	968	1036	-6.6%
BICYCLE	1	2	-50.0%	2	-50.0%	14	12	16.7%
SHOPLIFTING	36	44	-22.7%	43	-20.9%	373	352	6.0%
OTHERS	71	48	47.9%	58	22.4%	568	679	-16.3%
VEHICLE THEFT	16	12	33.3%	27	-40.7%	203	329	-38.3%
ARSON	-1	1	-200.0%	2	-150.0%	15	30	-50.0%
TOTALS	328	301	6.3%	343	-6.7%	3410	4072	-16.3%
VIOLENT PROPERTY	33 295	27 274	22.2% 4.7%	29 314	13.8% -8.6%	335 3075	374 3698	-10.4% -16.8%

University City Division (14)								
	<u>Current month</u>	<u>Previous Month</u>	<u>Percent Change</u>	<u>Same Month Last Year</u>	<u>Percent Change</u>	<u>Current Year to-Date</u>	<u>Past Year to-Date</u>	<u>Percent Change</u>
MURDER & NON-NEGLIGENT MANSLAUGHTER	0	2	-100.0%	0	NA	3	3	0.0%
RAPE	1	3	-66.7%	1	0.0%	20	13	53.8%
ROBBERY	12	15	-26.7%	14	-21.4%	133	165	-19.4%
ARMED	12	9	22.2%	12	-8.3%	105	140	-25.0%
STRONG-ARM	0	6	-100.0%	2	-100.0%	28	25	12.0%
AGGRAVATED ASSAULT	12	9	33.3%	10	20.0%	127	129	-1.6%
BURGLARY	67	74	-9.5%	80	-16.3%	679	831	-18.3%
RESIDENTIAL	51	63	-19.0%	59	-13.6%	569	659	-13.7%
COMMERCIAL	16	11	45.5%	21	-23.8%	110	172	-36.0%
LARCENY	184	246	-25.2%	201	-8.5%	2075	2720	-23.7%
FROM AUTO	87	114	-23.7%	91	-4.4%	1100	1688	-34.8%
BICYCLE	2	6	-66.7%	4		20	14	42.9%
SHOPLIFTING	39	60	-35.0%	40	-2.5%	320	292	9.6%
OTHERS	56	66	-15.2%	66	-15.2%	635	726	-12.5%
VEHICLE THEFT	18	24	-25.0%	31	-41.9%	247	367	-32.7%
ARSON	1	2	-50.0%	0	NA	12	23	-47.8%
TOTALS	295	375	-21.6%	337	-12.8%	3295	4251	-22.5%
VIOLENT PROPERTY	25 270	29 346	-17.2% -22.0%	25 312	-4.0% -13.5%	282 3013	310 3941	-9.0% -23.5%

October, 2009

Hickory Grove Division (12)								
	<u>Current month</u>	<u>Previous Month</u>	<u>Percent Change</u>	<u>Same Month Last Year</u>	<u>Percent Change</u>	<u>Current Year-to-Date</u>	<u>Past Year-to-Date</u>	<u>Percent Change</u>
MURDER & NON-NEGLIGENT MANSLAUGHTER	0	0	NA	1	-100.0%	1	5	-80.0%
RAPE	2	1	100.0%	1	100.0%	24	15	60.0%
ROBBERY	11	13	-23.1%	32	-68.8%	123	166	-25.9%
ARMED	9	12	-33.3%	31	-74.2%	104	146	-28.8%
STRONG-ARM	2	1	100.0%	1	100.0%	19	20	-5.0%
AGGRAVATED ASSAULT	11	16	-37.5%	16	-37.5%	144	157	-8.3%
BURGLARY	42	61	-32.8%	88	-53.4%	594	746	-20.4%
RESIDENTIAL	38	49	-24.5%	72	-48.6%	481	616	-21.9%
COMMERCIAL	4	12	-66.7%	16	-75.0%	113	130	-13.1%
LARCENY	87	119	-26.9%	141	-38.3%	1112	1321	-15.8%
FROM AUTO	31	45	-31.1%	66	-53.0%	461	670	-31.2%
BICYCLE	2	0	NA	1		13	16	-18.8%
SHOPLIFTING	14	19	-26.3%	16	-12.5%	154	118	30.5%
OTHERS	40	55	-27.3%	58	-31.0%	484	517	-6.4%
VEHICLE THEFT	18	12	50.0%	36	-50.0%	175	401	-56.4%
ARSON	1	1	0.0%	5	-80.0%	16	25	-36.0%
TOTALS	172	223	-24.2%	320	-47.2%	2189	2836	-22.8%
VIOLENT PROPERTY	24	30	-26.7%	50	-56.0%	292	343	-14.9%
	148	193	-23.8%	270	-45.6%	1897	2493	-23.9%

Independence Division (17)								
	<u>Current month</u>	<u>Previous Month</u>	<u>Percent Change</u>	<u>Same Month Last Year</u>	<u>Percent Change</u>	<u>Current Year-to-Date</u>	<u>Past Year-to-Date</u>	<u>Percent Change</u>
MURDER & NON-NEGLIGENT MANSLAUGHTER	1	0	NA	-1	-200.0%	2	3	-33.3%
RAPE	1	0	NA	2	-50.0%	18	16	12.5%
ROBBERY	15	19	-21.1%	21	-28.6%	176	192	-8.3%
ARMED	12	15	-20.0%	17	-29.4%	145	159	-8.8%
STRONG-ARM	3	4	-25.0%	4	-25.0%	31	33	-6.1%
AGGRAVATED ASSAULT	16	16	-6.3%	25	-40.0%	178	232	-23.3%
BURGLARY	53	68	-22.1%	75	-29.3%	572	743	-23.0%
RESIDENTIAL	47	55	-14.5%	67	-29.9%	493	578	-14.7%
COMMERCIAL	6	13	-53.8%	8	-25.0%	79	165	-52.1%
LARCENY	128	152	-17.1%	139	-9.4%	1566	1562	0.3%
FROM AUTO	51	63	-19.0%	75	-32.0%	761	889	-14.4%
BICYCLE	2	4	-50.0%	1		20	32	-37.5%
SHOPLIFTING	35	25	32.0%	16	106.3%	289	155	86.5%
OTHERS	40	60	-33.3%	47	-14.9%	496	486	2.1%
VEHICLE THEFT	17	22	-22.7%	34	-50.0%	221	319	-30.7%
ARSON	0	0	NA	3	-100.0%	18	19	-5.3%
TOTALS	231	277	-17.7%	298	-23.5%	2751	3086	-10.9%
VIOLENT PROPERTY	33	35	-8.6%	47	-31.9%	374	443	-15.6%
	198	242	-19.0%	251	-21.9%	2377	2643	-10.1%

October, 2009

Providence Division (16)								
	<u>Current month</u>	<u>Previous Month</u>	<u>Percent Change</u>	<u>Same Month Last Year</u>	<u>Percent Change</u>	<u>Current Year-to-Date</u>	<u>Past Year-to-Date</u>	<u>Percent Change</u>
MURDER & NON-NEGLIGENT MANSLAUGHTER	0	0	NA	1	-100.0%	0	2	-100.0%
RAPE	-1	1	-200.0%	1	-200.0%	11	14	-21.4%
ROBBERY	4	11	-63.6%	15	-73.3%	82	124	-33.9%
ARMED	3	9	-66.7%	13	-76.9%	59	85	-30.6%
STRONG-ARM	1	2	-50.0%	2	-50.0%	23	39	-41.0%
AGGRAVATED ASSAULT	10	8	25.0%	16	-37.5%	126	140	-10.0%
BURGLARY	62	39	53.8%	57	5.3%	542	732	-26.0%
RESIDENTIAL	52	25	100.0%	42	19.0%	418	533	-21.6%
COMMERCIAL	10	14	-28.6%	15	-33.3%	124	199	-37.7%
LARCENY	181	171	5.8%	191	-5.2%	1971	2364	-16.6%
FROM AUTO	98	94	4.3%	106	-7.5%	1161	1446	-19.7%
BICYCLE	4	6	-33.3%	2		28	18	55.6%
SHOPLIFTING	25	27	-7.4%	16	56.3%	283	204	38.7%
OTHERS	54	44	22.7%	67	-19.4%	499	696	-28.3%
VEHICLE THEFT	8	11	-27.3%	25	-68.0%	123	278	-55.8%
ARSON	0	0	NA	0	NA	6	13	-53.8%
TOTALS	264	241	8.7%	306	-14.4%	2861	3667	-22.0%
VIOLENT PROPERTY	13 251	20 221	-35.0% 12.7%	33 273	-60.6% -8.8%	219 2642	280 3387	-21.8% -22.0%

South Division (22)								
	<u>Current month</u>	<u>Previous Month</u>	<u>Percent Change</u>	<u>Same Month Last Year</u>	<u>Percent Change</u>	<u>Current Year-to-Date</u>	<u>Past Year-to-Date</u>	<u>Percent Change</u>
MURDER & NON-NEGLIGENT MANSLAUGHTER	0	0	NA	0	NA	0	1	-100.0%
RAPE	1	1	0.0%	3	-66.7%	8	10	-20.0%
ROBBERY	3	1	200.0%	3	0.0%	34	49	-30.6%
ARMED	1	1	0.0%	3	-66.7%	24	35	-31.4%
STRONG-ARM	2	0	NA	0	NA	10	14	-28.6%
AGGRAVATED ASSAULT	5	6	-16.7%	9	-44.4%	70	86	-18.6%
BURGLARY	26	40	-35.0%	33	-21.2%	332	522	-36.4%
RESIDENTIAL	18	34	-47.1%	26	-30.8%	280	410	-31.7%
COMMERCIAL	8	6	33.3%	7	14.3%	52	112	-53.6%
LARCENY	123	150	-20.0%	180	-33.3%	1557	1874	-16.9%
FROM AUTO	56	74	-24.3%	84	-33.3%	826	1130	-26.9%
BICYCLE	1	0	NA	3		22	17	29.4%
SHOPLIFTING	15	17	-11.8%	16	-6.3%	180	151	19.2%
OTHERS	51	59	-18.6%	77	-37.7%	529	576	-8.2%
VEHICLE THEFT	13	12	8.3%	11	18.2%	97	138	-29.7%
ARSON	1	0	NA	1	0.0%	14	15	-6.7%
TOTALS	172	210	-19.5%	240	-29.6%	2112	2695	-21.6%
VIOLENT PROPERTY	9 163	8 202	12.5% -20.8%	15 225	-40.0% -28.9%	112 2000	146 2549	-23.3% -21.5%

October, 2009

Westover Division (26)								
	<u>Current month</u>	<u>Previous Month</u>	<u>Percent Change</u>	<u>Same Month Last Year</u>	<u>Percent Change</u>	<u>Current Year-to-Date</u>	<u>Past Year-to-Date</u>	<u>Percent Change</u>
MURDER & NON-NEGLIGENT MANSLAUGHTER	1	0	NA	1	0.0%	7	10	-30.0%
RAPE	8	2	300.0%	0	NA	23	23	0.0%
ROBBERY	14	13	7.7%	39	-64.1%	209	264	-20.8%
ARMED	9	11	-18.2%	33	-72.7%	172	214	-19.6%
STRONG-ARM	5	2	150.0%	6	-16.7%	37	50	-26.0%
AGGRAVATED ASSAULT	29	23	26.1%	25	16.0%	283	397	-28.7%
BURGLARY	59	52	13.5%	78	-24.4%	629	770	-18.3%
RESIDENTIAL	50	41	22.0%	53	-5.7%	447	564	-20.7%
COMMERCIAL	9	11	-18.2%	25	-64.0%	182	206	-11.7%
LARCENY	137	143	-4.2%	189	-27.5%	1517	1993	-23.9%
FROM AUTO	59	64	-7.8%	88	-33.0%	674	1104	-38.9%
BICYCLE	2	1	100.0%	1		16	15	6.7%
SHOPLIFTING	26	24	8.3%	35	-25.7%	240	189	27.0%
OTHERS	50	54	-7.4%	65	-23.1%	587	685	-14.3%
VEHICLE THEFT	11	24	-54.2%	37	-70.3%	228	390	-41.5%
ARSON	1	0	NA	-2	-150.0%	14	22	-36.4%
TOTALS	260	257	1.2%	367	-29.2%	2910	3869	-24.8%
VIOLENT PROPERTY	52	38	36.8%	65	-20.0%	522	694	-24.8%
	208	219	-5.0%	302	-31.1%	2388	3175	-24.8%

Steele Creek Division (21)								
	<u>Current month</u>	<u>Previous Month</u>	<u>Percent Change</u>	<u>Same Month Last Year</u>	<u>Percent Change</u>	<u>Current Year-to-Date</u>	<u>Past Year-to-Date</u>	<u>Percent Change</u>
MURDER & NON-NEGLIGENT MANSLAUGHTER	0	0	NA	1	-100.0%	1	9	-88.9%
RAPE	1	1	0.0%	1	0.0%	21	14	50.0%
ROBBERY	11	13	-15.4%	17	-35.3%	159	227	-30.0%
ARMED	7	10	-30.0%	13	-46.2%	133	191	-30.4%
STRONG-ARM	4	3	33.3%	4	0.0%	26	36	-27.8%
AGGRAVATED ASSAULT	20	19	0.0%	36	-47.2%	164	236	-30.5%
BURGLARY	71	62	11.3%	59	16.9%	713	750	-4.9%
RESIDENTIAL	56	48	12.5%	49	10.2%	468	579	-19.2%
COMMERCIAL*(see note)	15	14	7.1%	10	50.0%	245	171	43.3%
LARCENY	165	196	-16.3%	218	-24.8%	1938	2651	-26.9%
FROM AUTO	74	87	-14.9%	111	-33.3%	955	1555	-38.6%
BICYCLE	4	2	100.0%	1		17	11	54.5%
SHOPLIFTING	22	38	-42.1%	29	-24.1%	284	268	6.0%
OTHERS	65	69	-7.2%	77	-16.9%	682	817	-16.5%
VEHICLE THEFT	20	17	17.6%	59	-66.1%	299	477	-37.3%
ARSON	2	2	0.0%	3	-33.3%	23	35	-34.3%
TOTALS	290	310	-7.7%	394	-27.4%	3318	4399	-24.6%
VIOLENT PROPERTY	32	33	-6.1%	55	-43.6%	345	486	-29.0%
	258	277	-7.9%	339	-24.8%	2973	3913	-24.0%

October, 2009

Metro Division (02)								
	<u>Current month</u>	<u>Previous Month</u>	<u>Percent Change</u>	<u>Same Month Last Year</u>	<u>Percent Change</u>	<u>Current Year-to-Date</u>	<u>Past Year-to-Date</u>	<u>Percent Change</u>
MURDER & NON-NEGLIGENT MANSLAUGHTER	0	1	-100.0%	0	NA	2	8	-75.0%
RAPE	3	1	200.0%	1	200.0%	19	21	-9.5%
ROBBERY	30	21	33.3%	31	-9.7%	195	278	-29.9%
ARMED	21	16	25.0%	24	-16.7%	137	225	-39.1%
STRONG-ARM	9	5	60.0%	7	14.3%	58	53	9.4%
AGGRAVATED ASSAULT	50	32	46.9%	50	-6.0%	402	516	-22.1%
BURGLARY	83	58	39.7%	91	-11.0%	754	853	-11.6%
RESIDENTIAL	71	49	40.8%	52	32.7%	546	551	-0.9%
COMMERCIAL	12	9	33.3%	39	-69.2%	208	302	-31.1%
LARCENY	143	156	-9.6%	157	-10.2%	1667	1811	-8.0%
FROM AUTO	65	73	-11.0%	75	-13.3%	901	856	5.3%
BICYCLE	1	3	-66.7%	1		14	21	-33.3%
SHOPLIFTING	9	22	-59.1%	20	-55.0%	150	176	-14.8%
OTHERS	68	58	13.8%	61	8.2%	602	758	-20.6%
VEHICLE THEFT	26	32	-18.8%	33	-21.2%	259	427	-39.3%
ARSON	3	1	200.0%	2	50.0%	24	26	-7.7%
TOTALS	338	302	8.9%	365	-9.9%	3322	3940	-15.7%
VIOLENT PROPERTY	83 255	55 247	41.8% 1.6%	82 283	-4.9% -11.3%	618 2704	823 3117	-24.9% -13.2%

Freedom Division (27)								
	<u>Current month</u>	<u>Previous Month</u>	<u>Percent Change</u>	<u>Same Month Last Year</u>	<u>Percent Change</u>	<u>Current Year-to-Date</u>	<u>Past Year-to-Date</u>	<u>Percent Change</u>
MURDER & NON-NEGLIGENT MANSLAUGHTER	0	2	-100.0%	0	NA	8	2	300.0%
RAPE	1	4	-75.0%	1	0.0%	22	20	10.0%
ROBBERY	12	10	20.0%	16	-25.0%	123	199	-38.2%
ARMED	11	7	57.1%	15	-26.7%	99	164	-39.6%
STRONG-ARM	1	3	-66.7%	1	0.0%	24	35	-31.4%
AGGRAVATED ASSAULT	21	25	-16.0%	38	-44.7%	204	358	-43.0%
BURGLARY	78	79	-1.3%	99	-21.2%	856	874	-2.1%
RESIDENTIAL	65	69	-7.2%	81	-21.0%	677	683	-0.9%
COMMERCIAL	13	10	40.0%	18	-22.2%	179	191	-6.3%
LARCENY	130	170	-24.7%	194	-34.0%	1689	2049	-17.6%
FROM AUTO	43	71	-40.8%	87	-51.7%	794	1082	-26.6%
BICYCLE	1	1	0.0%	1		13	13	0.0%
SHOPLIFTING	29	24	16.7%	23	21.7%	286	153	86.9%
OTHERS	57	74	-23.0%	83	-31.3%	596	801	-25.6%
VEHICLE THEFT	18	23	-21.7%	35	-48.6%	349	435	-19.8%
ARSON	1	1	0.0%	4	-75.0%	28	24	16.7%
TOTALS	261	314	-17.5%	387	-33.1%	3279	3961	-17.2%
VIOLENT PROPERTY	34 227	41 273	-17.1% -17.6%	55 332	-38.2% -32.2%	357 2922	579 3382	-38.3% -13.6%

October, 2009

Central Division (01)								
	<u>Current</u> <u>month</u>	<u>Previous</u> <u>Month</u>	<u>Percent</u> <u>Change</u>	<u>Same Month</u> <u>Last Year</u>	<u>Percent</u> <u>Change</u>	<u>Current Year-</u> <u>to-Date</u>	<u>Past Year-</u> <u>to-Date</u>	<u>Percent</u> <u>Change</u>
MURDER & NON-NEGLIGENT MANSLAUGHTER	0	0	NA	0	NA	0	2	-100.0%
RAPE	1	4	-75.0%	3	-66.7%	20	23	-13.0%
ROBBERY	8	6	33.3%	13	-38.5%	89	104	-14.4%
ARMED	5	3	66.7%	7	-28.6%	62	69	-10.1%
STRONG-ARM	3	3	0.0%	6	-50.0%	27	35	-22.9%
AGGRAVATED ASSAULT	4	11	-63.6%	16	-75.0%	102	105	-2.9%
BURGLARY	27	11	145.5%	22	22.7%	159	243	-34.6%
RESIDENTIAL	19	7	171.4%	9	111.1%	91	104	-12.5%
COMMERCIAL	8	4	100.0%	13	-38.5%	68	139	-51.1%
LARCENY	152	196	-22.4%	162	-6.2%	1684	1753	-3.9%
FROM AUTO	77	104	-26.0%	62	24.2%	892	886	0.7%
BICYCLE	5	6	-16.7%	2	150.0%	24	12	100.0%
SHOPLIFTING	13	17	-23.5%	16	-18.8%	161	119	35.3%
OTHERS	57	69	-17.4%	82	-30.5%	607	736	-17.5%
VEHICLE THEFT	9	13	-30.8%	19	-52.6%	108	182	-40.7%
ARSON	0	0	NA	0	NA	3	3	0.0%
TOTALS	201	241	-16.6%	235	-14.5%	2165	2415	-10.4%
VIOLENT PROPERTY	13 188	21 220	-38.1% -14.5%	32 203	-59.4% -7.4%	211 1954	234 2181	-9.8% -10.4%

**Arrests by Charlotte-Mecklenburg Police Department
Year-To-Date: 2008-2009
(Through October)**

CATEGORY	ADULTS (AGE 18 & OLDER):			JUVENILES (UNDER 18):			TOTAL ARRESTS:		
	2008 Y-T-D	2009 Y-T-D	% CHANGE	2008 Y-T-D	2009 Y-T-D	% CHANGE	2008 Y-T-D	2009 Y-T-D	% CHANGE
Murder/Non-Negligent Manslaughter	29	39	34.5%	3	2	-33.3%	32	41	28.1%
Negligent & Vehicular Manslaughter	3	4	33.3%	1	0	-100.0%	4	4	0.0%
Rape	26	25	-3.8%	5	3	-40.0%	31	28	-9.7%
Robbery	360	340	-5.6%	106	125	17.9%	466	465	-0.2%
Aggravated Assault	1283	1601	24.8%	154	184	19.5%	1437	1785	24.2%
Burglary	591	634	7.3%	367	349	-4.9%	958	983	2.6%
Larceny	1508	1715	13.7%	538	594	10.4%	2046	2309	12.9%
Vehicle Theft	95	73	-23.2%	92	52	-43.5%	187	125	-33.2%
Non-Aggravated Assault	1743	1946	11.6%	636	630	-0.9%	2379	2576	8.3%
Arson	9	12	33.3%	21	26	23.8%	30	38	26.7%
Forgery/Counterfeit	110	139	26.4%	1	2	100.0%	111	141	27.0%
Fraud	402	425	5.7%	8	3	-62.5%	410	428	4.4%
Embezzlement	103	86	-16.5%	15	5	-66.7%	118	91	-22.9%
Stolen Property	445	397	-10.8%	106	67	-36.8%	551	464	-15.8%
Vandalism	175	214	22.3%	168	167	-0.6%	343	381	11.1%
Weapons	682	568	-16.7%	140	172	22.9%	822	740	-10.0%
Prostitution	224	238	6.3%	4	3	-25.0%	228	241	5.7%
Sex Offenses	160	162	1.3%	13	13	0.0%	173	175	1.2%
Drugs	2998	3005	0.2%	331	365	10.3%	3329	3370	1.2%
Gambling	6	18	200.0%	0	0	NA	6	18	200.0%
Offenses vs. Family	5	4	-20.0%	0	0	NA	5	4	-20.0%
DUI	1958	1931	-1.4%	8	11	37.5%	1966	1942	-1.2%
Liquor	283	343	21.2%	35	36	2.9%	318	379	19.2%
Disorder.Conduct	621	689	11.0%	266	249	-6.4%	887	938	5.7%
Other Non-Traffic	6688	7046	5.4%	638	675	5.8%	7326	7721	5.4%
VIOLENT INDEX¹	1698	2005	18.1%	268	314	17.2%	1966	2319	18.0%
PROPERTY INDEX²	2203	2434	10.5%	1018	1021	0.3%	3221	3455	7.3%
INDEX SUBTOTAL	3901	4439	13.8%	1286	1335	3.8%	5187	5774	11.3%
PART 2 SUBTOTAL³	16606	17215	3.7%	2370	2398	1.2%	18976	19613	3.4%
TOTAL	20507	21654	5.6%	3656	3733	2.1%	24163	25387	5.1%

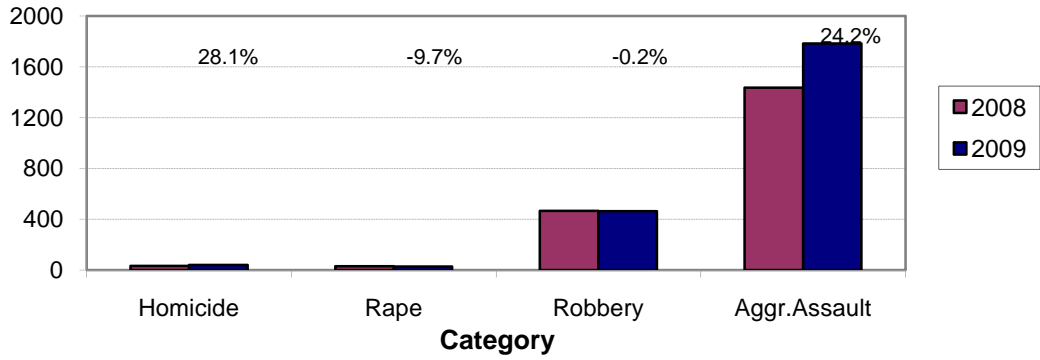
Note: Monthly totals under 18 for 2007 and 2008 were adjusted in April, 2008, to include some juvenile arrests (under 16) that were not originally counted in the arrest data due to an error in the computer program.

¹Violent Index includes murder and non-negligent manslaughter, rape, robbery, and aggravated assault.

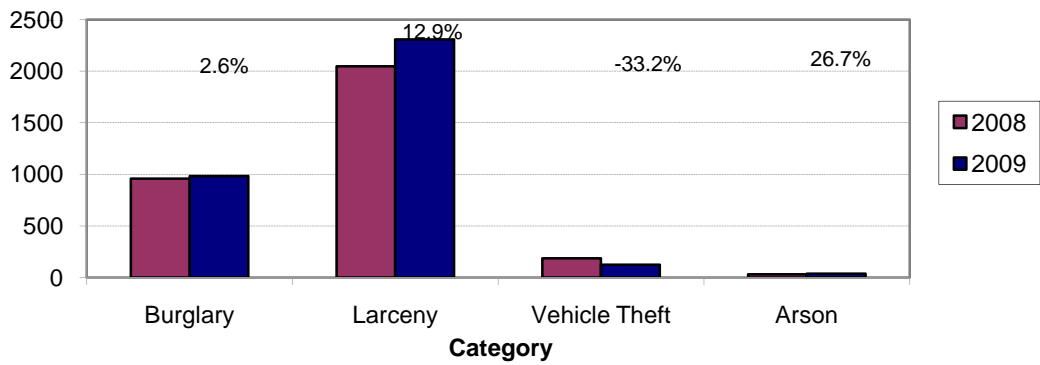
²Property Index includes burglary, larceny, vehicle theft, and arson.

³Part 2 crimes include crime categories not counted in the Index totals.

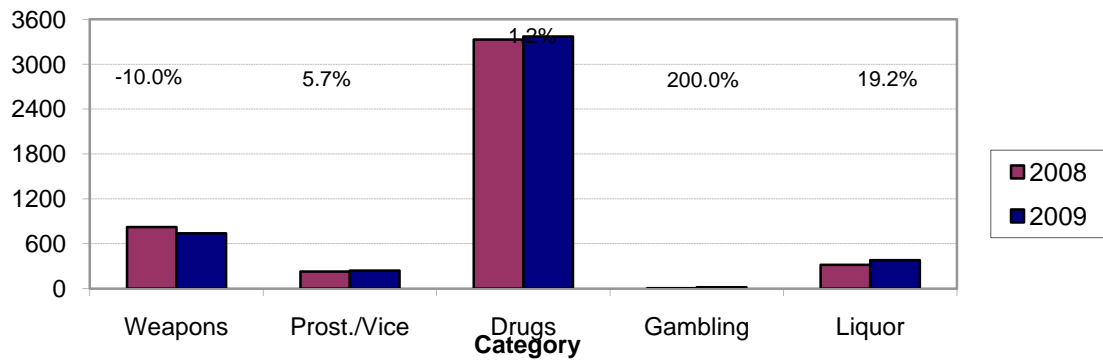
Violent Index Arrests Year-to-Date
Charlotte-Mecklenburg Police Department: 2008-2009
 (Through October)



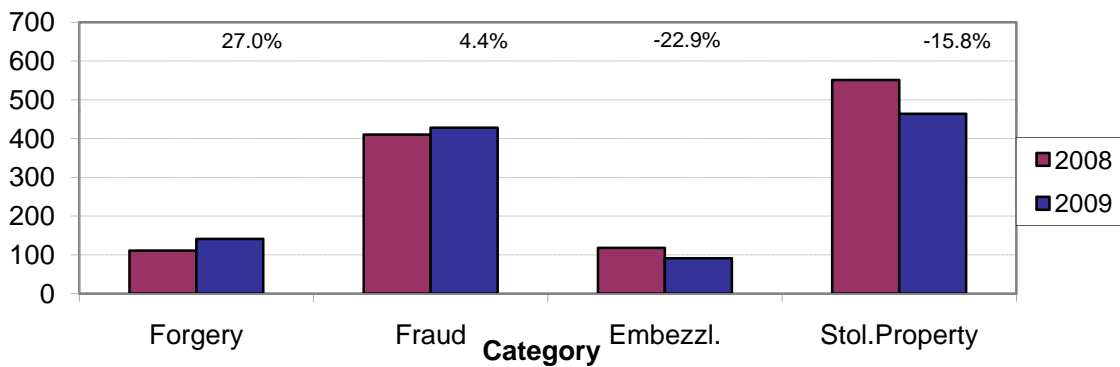
Property Index Arrests Year-to-Date
Charlotte-Mecklenburg Police Department: 2008-2009
 (Through October)



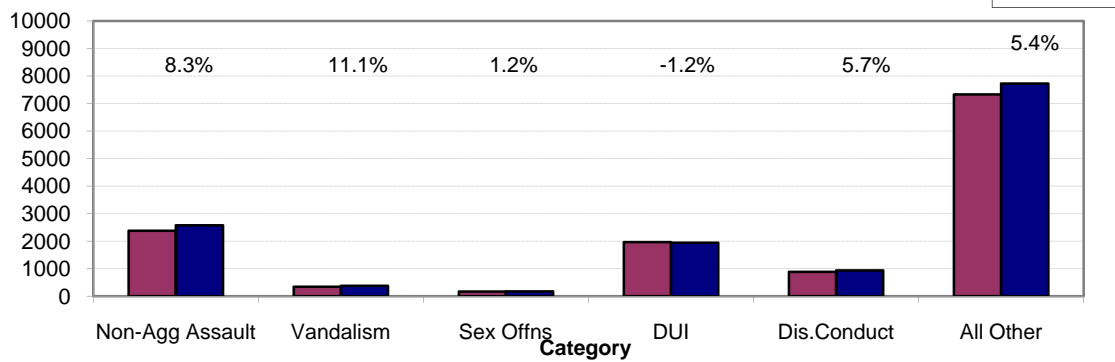
Arrests for Vice/CCW/Drugs/Etc. Year-to-Date
Charlotte-Mecklenburg Police Department: 2008-2009
 (Through October)



Arrests for Property/White Collar Crime Year-to-Date
Charlotte-Mecklenburg Police Department: 2006-2009
 (Through October)



Arrests for Other Categories Year-to-Date
Charlotte-Mecklenburg Police Department: 2008-2009
 (Through October)

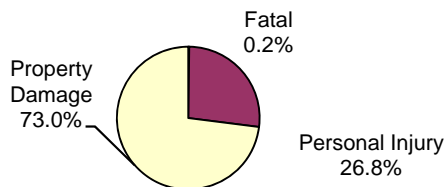


**Traffic Collision Reports Recorded by
Charlotte-Mecklenburg Police Department
2009 Year-to-Date (See note)
(Through October)**

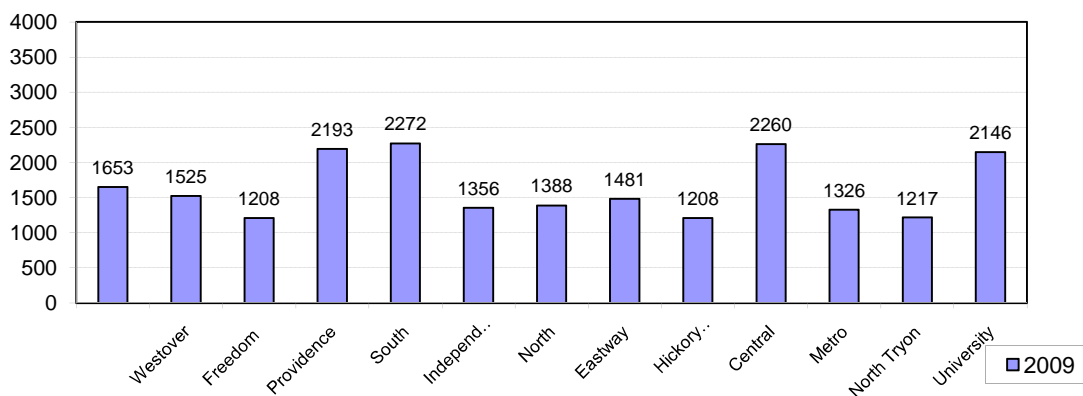
<u>Type</u>	<u>2009</u>
Fatal Collision Reports	39
Vehicle Occupants Killed	29
Pedestrians Killed	12
Personal Injury Collisions	5701
Property Damage Collisions	15493
Total Collision Reports	21233

* The number of fatal collisions and the number of persons killed in those incidents is taken from the files of the CMPD Highway Interdiction Traffic Safety (HITS) unit; their records are updated for deaths that occur after the initial report is filed.

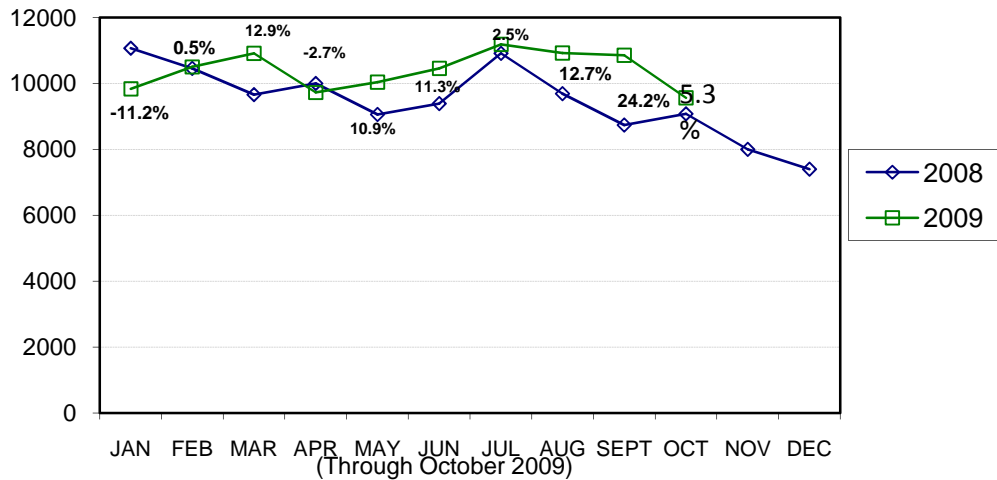
**Traffic Collision Reports by Type
Charlotte-Mecklenburg Police Department:
2009 Year-to-Date
(Through October)**



**Traffic Collision Reports - Charlotte-Mecklenburg Police Dept.
Year-to-Date By Location (Division) : 2009**

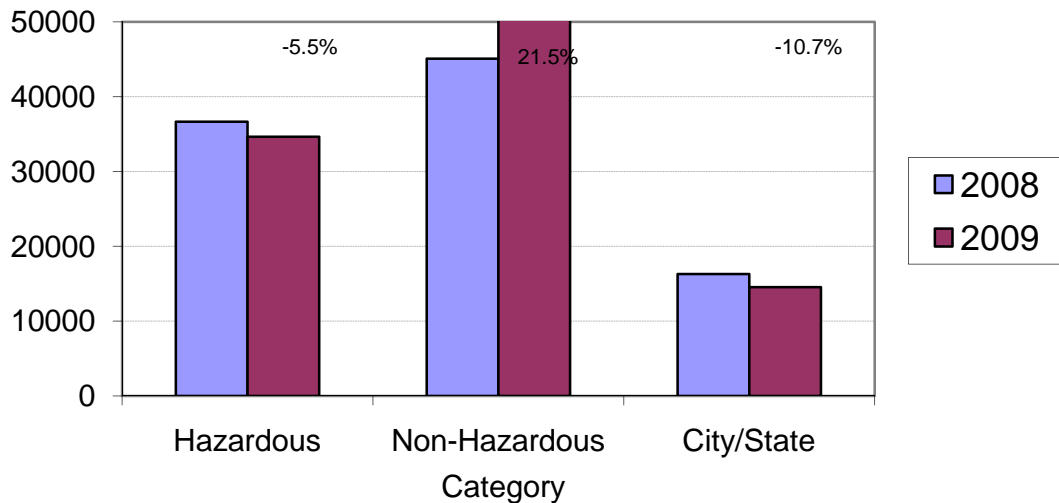


Total Citation Enforcement by Month Charlotte-Mecklenburg Police Dept.: 2008-2009



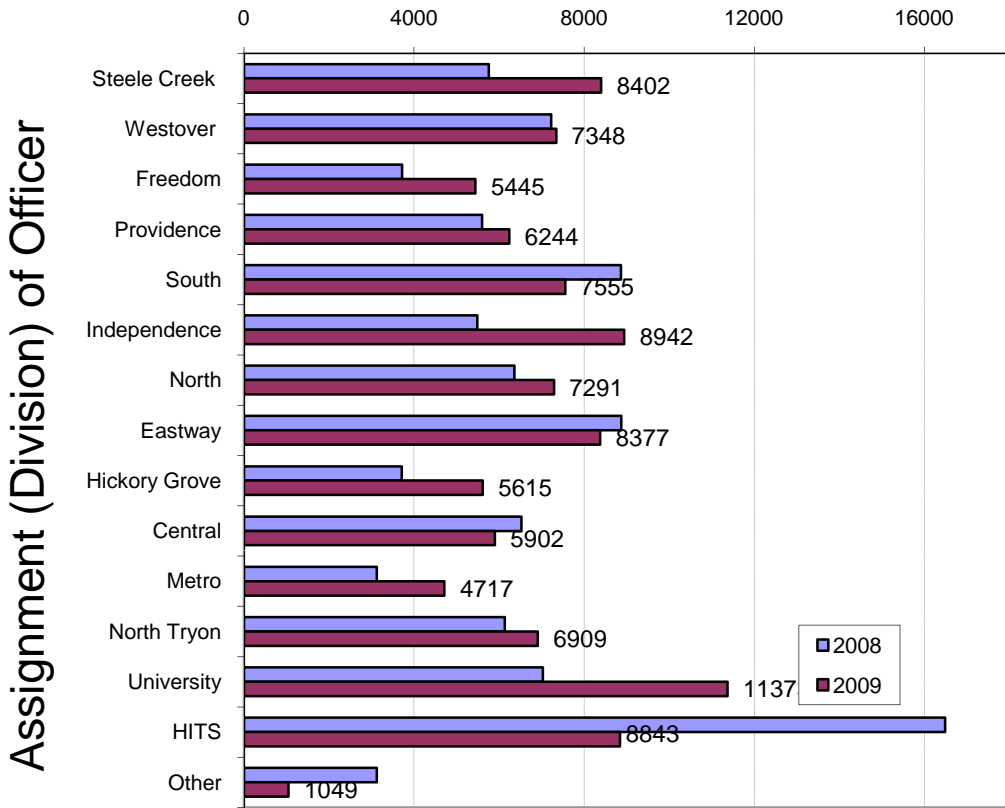
(Includes both traffic and non traffic citations; percentages are current month compared to same month in previous year. Monthly totals may be affected by data entry delays or copies not being routed to the Records Division for tallying.)

CMPD Citation Enforcement by Category Year-to-Date, 2008-2009 (Through October 2009)



**Citations Issued Year-to-Date by CMPD Divisions
2008-2009**

(Through October 2009)



Note: Totals are based on the division of the officer as recorded on the citation copies routed to and entered by the Records Division. Year-to-date data may be affected by data entry delays, copies not being routed to the Records Division, errors in data entry, or changes in divisions/reorganizations.

**Citations Reported by the Charlotte Mecklenburg Police Year-to-Date
(Through October 2009)**

	<u>2008</u>	<u>2009</u>	<u>% Change</u>
Hazardous	36,664	34,658	-5.5%
Non-Hazardous	45,100	54,796	21.5%
Other City/State Statute/Ordinance	16,297	14,558	-10.7%
Total	98,061	104,012	6.1%

**CITIZEN-INITIATED CALLS FOR SERVICE¹ BY TYPE
CHARLOTTE-MECKLENBURG POLICE DEPARTMENT**

<u>Type of Call²</u>	<u>2008 Year-to-Date⁵</u>	<u>2009 Year-to-Date⁵</u>	<u>Year-to-Date</u>
	<u>Through October</u>	<u>Through October</u>	<u>% Change</u>
ABC RELATED	1915	1689	-11.8%
ACCIDENT	27999	26547	-5.2%
ALARM	33914	31310	-7.7%
ANIMAL CONTROL ³	370	973	163.0%
ASSAULT	3897	3977	2.1%
ASSAULT WITH DEADLY WEAPON	2144	1942	-9.4%
ASSIST OTHER AGENCY	7842	7604	-3.0%
BOMB THREAT	51	45	-11.8%
BREAK/ENTER	16657	13851	-16.8%
CDCP CLINICIAN VISIT ⁴	1473	1291	-12.4%
COMMUNICATING THREATS	2903	3272	12.7%
COUNTY SECURITY ³	17	13	-23.5%
CRIMINAL INTELLIGENCE	7	6	-14.3%
CRITICAL INCIDENT ⁴	24	8	-66.7%
DAMAGE TO PROPERTY	6732	5941	-11.7%
DEATH	164	141	-14.0%
DISTURBANCE	23851	22356	-6.3%
DOMESTIC INCIDENT	28183	29965	6.3%
DRUG RELATED	3489	3227	-7.5%
EXTORTION/BLACKMAIL ⁴	10	12	20.0%
FIGHT	2714	2586	-4.7%
FIRE CASE	66	43	-34.8%
FRAUD/FORGERY	3726	4019	7.9%
GAMBLING	17	27	58.8%
HARASSMENT	1698	2186	28.7%
HIT AND RUN	6175	5625	-8.9%
JUVENILE RELATED	1858	1871	0.7%
KIDNAPPING	144	136	-5.6%
LAKE ENFORCEMENT	80	65	-18.8%
LARCENY	27915	24564	-12.0%
LOITERING	5248	5863	11.7%
MISSING PERSON	5166	4912	-4.9%
NOISE COMPLAINT	12487	12316	-1.4%
OFFENSE AGAINST FAMILY	2	2	0.0%
OFFICER CALLED IN	1	12	1100.0%
OVERDOSE	379	410	8.2%
PORNOGRAPHY	8	6	-25.0%
PROPERTY	5156	3997	-22.5%
PROSTITUTION	675	0	-100.0%
PUBLIC SERVICE	13674	14816	8.4%
QUALITY OF LIFE	568	602	6.0%
ROBBERY	2638	2019	-23.5%
SEX CRIME	1014	982	-3.2%
SPECIAL SERVICE REQUEST ⁴	6	3	-50.0%
SUICIDE	2914	1451	-50.2%
SUSPICIOUS PERSON	16498	15552	-5.7%
TRAFFIC RELATED	11505	9486	-17.5%
TRESPASS	3559	3609	1.4%
VEHICLE RELATED	28729	24639	-14.2%
VIOLENT CRIMES TASK FORCE ⁴	1	0	NA
WARRANT RELATED	2410	2403	-0.3%
WEAPON RELATED	6843	4938	-27.8%
ZONE CHECK-ADVISED EVENT ⁴	16	19	18.8%
911 HANG UP / CALLBACK	9775	9615	-1.6%
TOTAL	335307	312944	-6.7%

¹These totals exclude duplicate and cancelled calls for service; they include calls handled by the Crime Reporting Unit as well as by division field officers, detectives and related CMPD staff.

²The type of call is determined from the 911 call, unless updated by an officer assigned to respond.

³In this summary, calls to Animal Control, Mecklenburg County Security, or Davidson Police are not included unless they also involve the dispatching of C-MPD field officers or detectives.

⁴This call type may not have been in use during part or all of the previous year or current year.

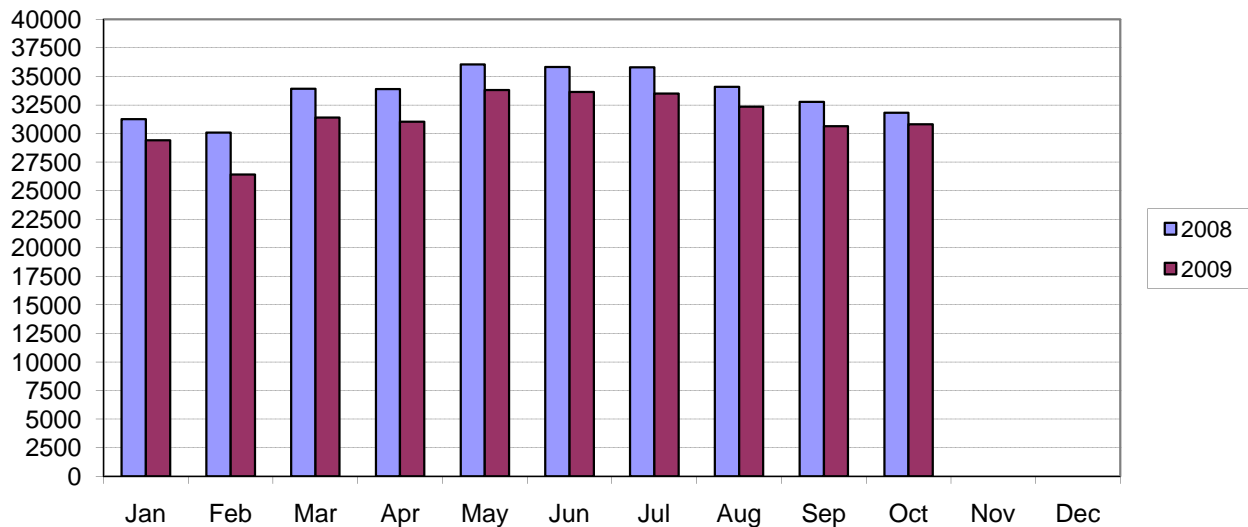
CITIZEN-INITIATED CALLS FOR SERVICE BY ORIGINATING CMPD DIVISION^{1,2}
 (Based on District of Call Origination, Not on Assigned District of Responding Units)

<u>District</u>	<u>2008 Year-to-Date Through October</u>	<u>2009 Year-to-Date Through October</u>	<u>Year-to-Date % Change</u>
Central-01	19668	19156	-2.6%
Metro-02	29641	28086	-5.2%
Eastway-06	26520	24011	-9.5%
North Tryon-07	24847	22600	-9.0%
North-11 (C1)	27736	26773	-3.5%
Hickory Grove-12	20606	19759	-4.1%
University-14	28332	26549	-6.3%
Providence-16	27242	25162	-7.6%
Independence-17	24033	23168	-3.6%
Steele Creek-21	27398	25323	-7.6%
South-22	24938	23888	-4.2%
Westover-26	26503	23900	-9.8%
Freedom-27	25874	23993	-7.3%
Total²	333338	312368	-6.3%

¹These totals exclude duplicate and cancelled calls for service; they include calls handled by the Crime Reporting Unit as well as by division field officers, detectives and other CMPD staff.

²Calls where the location could not be assigned to one of the divisions are not included in this chart.

Citizen-Initiated Calls for Service¹ by Month
Charlotte-Mecklenburg Police Department: 2008-2009



¹These totals exclude duplicate and cancelled calls for service; they include calls handled by the Crime Reporting Unit as well as by division field officers, detectives and other CMPD staff.

Uniform Crime Reporting Procedures

The Charlotte-Mecklenburg Police Department reports offense and arrest statistics in accordance with standard Uniform Crime Reporting (UCR) guidelines. UCR policy states that any adjustments to previous months can be made on the current month's report:

... Law enforcement investigation in the current month may show that actual offenses the agency recorded on a previous month's report require adjustment; that is, an offense might be (1) unfounded, (2) reclassified, or (3) subtracted from previous totals. It may be necessary for the agency to adjust the totals reported to the UCR Program for the past month or prior months. Agencies can make needed adjustments on the current month's report; these do not affect the reliability of the figures because such adjustments tend to offset one another from month to month over a period of time.

- *Uniform Crime Reporting Handbook*, FBI, 2004, p. 82

We are required to report crime monthly to the UCR program, and we do therefore make an effort to process monthly changes in a timely manner. However, occasionally due to the review and processing required for reclassifying, unfounding or clearing cases, the current month's totals may reflect the processing of a backlog of these changes from previous months.

Users of the data are cautioned that conclusions about substantial changes in crime trends or in clearance rates based on only a single month's data or trend may reflect some of these adjustments. For this reason, in addition to the monthly and year-to-date trends on Page 1, the monthly report routinely includes a comparison for the previous 12 months, as well as graphs that provide seasonal/monthly comparisons over a five-year period.

UCR Definitions and Terms:

Index Crime: the eight offenses that the national UCR program tracks on a yearly basis to gauge trends in the extent of crime, despite differences among state and local criminal statutes. These offenses were selected on the basis of several factors: seriousness, frequency of occurrence, pervasiveness in all geographic areas, and/or likelihood of being reported to law enforcement.

Violent Index: includes the offenses of murder/non-negligent manslaughter, rape, robbery, and aggravated assault

Property Index: includes the offenses of burglary, larceny, vehicle theft and arson

Murder/non-negligent manslaughter: the willful killing of one human being by another (UCR counts each victim.)

Justifiable Homicide: limited by UCR to either a killing by a law enforcement officer in the line of duty or a killing by a citizen of a felon during the commission of a felony. If a homicide is determined to be "justifiable" by this definition, it is subtracted from the murder/non-negligent manslaughter category after investigation.

Rape: the carnal knowledge of a female forcibly and against her will (UCR counts each victim. Note: This offense does not include other sex offenses or statutory [non-forcible] rape.)

Robbery: the taking or attempt to take anything of value from the care, custody, or control of a person or persons by force, threat of force or violence, or by putting the victim in fear. (UCR counts 1 robbery per incident, regardless of the number of victims robbed in the case.)

Aggravated assault: an unlawful attack by one person on another for the purpose of inflicting severe or aggravated bodily injury; includes 1) all assaults in which a weapon of any type is used or is threatened to be used and/or 2) all assaults where serious injury occurs (UCR counts one aggravated assault for each victim of assault.)

Burglary: the unlawful entry or attempted entry of a structure to commit a felony or a theft (UCR counts 1 burglary per premise/"distinct operation." Note: Each break-in of a distinct "business" office, individual rental storage unit, or similar premise in a multi-unit building is considered a "distinct operation".)

Larceny-Theft: the unlawful taking (or attempt), carrying, leading, or riding away of property from the possession or constructive possession of another (UCR counts 1 offense per total incident. Note: Larceny/theft of a motor vehicle is classed separately.)

Vehicle Theft: the theft or attempted theft of a motor vehicle (UCR counts each vehicle that is a self-propelled vehicle that runs on land and not on rails, excluding farm and construction equipment)

Arson: the willful or malicious burning or attempt to burn, with or without intent to defraud, a structure, motor vehicle, personal property of another, etc. (UCR counts 1 per incident.)

Hierarchy rule: For cases involving multiple-offenses, the incident is classified and counted based on the highest offense on a hierarchy of crimes established by UCR. For example, for an incident involving a rape and a burglary, the incident would be counted in the rape category because rape is higher than burglary on the hierarchy.

Clearance: A case is considered cleared when either 1) at least one arrest is made for the offense or 2) when the offender's identity is established by investigation but the offender will not be arrested for reasons outside law enforcement control (offender dies, victim refuses to prosecute, district attorney declines prosecution, extradition is refused, etc.).

Unfounding: A case is "unfounded" and subtracted from the crime counts when investigation establishes that the incident did not actually occur or that the actions within the incident are not criminal based on current law, or that the incident report duplicates another report of the same crime.

For additional information, please consult the *UCR Handbook* on the FBI website at <http://www.fbi.gov/ucr/ucr.htm>.

This report was compiled by the Crime Analysis Division.

We make an effort to present the most accurate information available at the time this report is published. Please notify the Crime Analysis office if you have any questions about the data in this report or about an error that was missed in proofing the report.

Officer Ed Williams