



---

**CHARLOTTE-MECKLENBURG POLICE DEPARTMENT  
MONTHLY SUMMARY: SEPTEMBER 2009**

---

---

**Rodney Monroe  
Chief of Police**

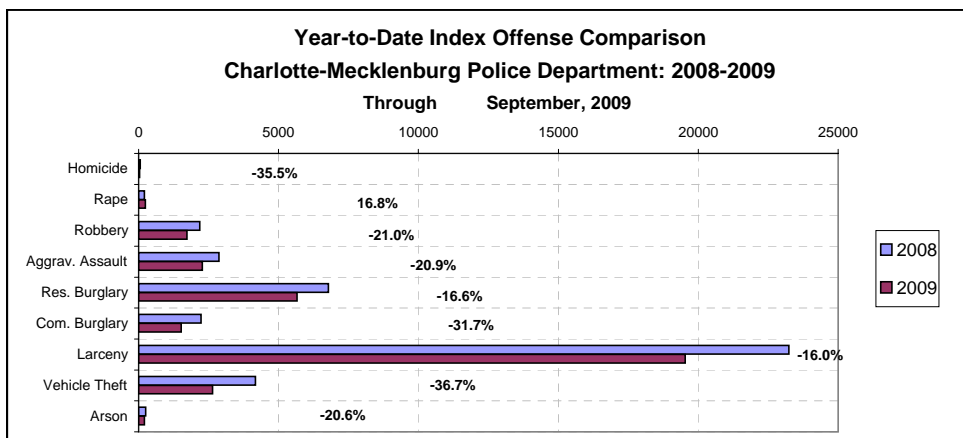
---

**INDEX OFFENSES REPORTED TO CHARLOTTE-MECKLENBURG POLICE DEPARTMENT**

September, 2009 INDEX OFFENSES	# THIS MONTH	# THIS INDEX	# LAST MONTH	MONTHLY % CHANGE	SAME MONTH LAST YEAR	MONTHLY % CHANGE	THIS YEAR TO DATE	LAST YEAR TO DATE	ANNUAL % CHANGE
HOMICIDE (MURDER & NON-NEGLIGENT MANSLAUGHTER)*	5	0.1%	7	-28.6%	7	-28.6%	40	62	-35.5%
RAPE TOTAL	25	0.7%	25	0.0%	17	47.1%	236	202	16.8%
ACTUAL	23	0.7%	24	-4.2%	17	35.3%	215	186	15.6%
ATTEMPT	2	0.1%	1	100.0%	0	NA	21	16	31.3%
ROBBERY TOTAL	179	5.2%	210	-14.8%	262	-31.7%	1725	2184	-21.0%
ARMED	144	4.1%	168	-14.3%	215	-33.0%	1373	1793	-23.4%
STRONG-ARM	35	1.0%	42	-16.7%	47	-25.5%	352	391	-10.0%
AGGRAVATED ASSAULT TOTAL	223	6.4%	333	-33.0%	272	-18.0%	2273	2873	-20.9%
BURGLARY TOTAL	681	19.6%	852	-20.1%	1012	-32.7%	7181	9014	-20.3%
RESIDENTIAL	633	18.2%	688	-8.0%	779	-18.7%	5656	6780	-16.6%
COMMERCIAL	48	1.4%	164	-70.7%	233	-79.4%	1525	2234	-31.7%
*****									
FORCE	527	15.2%	777	-32.2%	831	-36.6%	5804	7264	-20.1%
NO FORCE	97	2.8%	119	-18.5%	98	-1.0%	946	1027	-7.9%
ATTEMPT	57	1.6%	50	14.0%	83	-31.3%	525	723	-27.4%
LARCENY TOTAL	2115	60.9%	2273	-7.0%	2074	2.0%	19531	23238	-16.0%
\$200 AND OVER	1089	31.4%	1131	-3.7%	1041	4.6%	9995	12136	-17.6%
\$50 TO \$200	403	11.6%	398	1.3%	346	16.5%	3623	4031	-10.1%
UNDER \$50	623	17.9%	744	-16.3%	687	-9.3%	5913	7071	-16.4%
*****									
FROM AUTO	964	27.8%	1150	-16.2%	986	-2.2%	9917	12966	-23.5%
BICYCLE	37	1.1%	37	0.0%	18	105.6%	216	195	10.8%
SHOPLIFTING	358	10.3%	303	18.2%	233	53.6%	2833	2316	22.3%
OTHERS	756	21.8%	783	-3.4%	837	-9.7%	6565	7761	-15.4%
VEHICLE THEFT TOTAL	231	6.7%	266	-13.2%	409	-43.5%	2645	4177	-36.7%
ARSON TOTAL	14	0.4%	18	-22.2%	32	-56.3%	204	257	-20.6%
TOTALS	3473	100.0%	3984	-12.8%	4085	-15.0%	33834	42007	-19.5%
VIOLENT PROPERTY	432	12.4%	575	-24.9%	558	-22.6%	4273	5321	-19.7%
PROPERTY	3041	87.6%	3409	-10.8%	3527	-13.8%	29561	36686	-19.4%

NOTE: These totals include offenses reported to the Charlotte-Mecklenburg Police Department in accordance with the Uniform Crime Reporting (UCR) Program. Because the data in this report is primarily based on the automated Records Management System, cases counted this month may include offenses from previous months/years that were reclassified after investigation.

\*Monthly and year-to-date homicide totals in this report reflect the month in which cases were counted or subtracted due to reclassification after an investigation was completed. They may not match exactly with totals based on when the original case occurred.

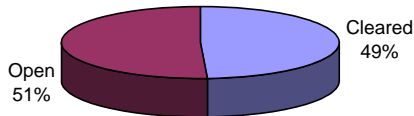


**INDEX CLEARANCES REPORTED BY THE CHARLOTTE-MECKLENBURG POLICE DEPARTMENT**

September, 2009 INDEX CLEARANCES	THIS MONTH		THIS MONTH LAST MONTH:		SAME MO. LAST YR:		THIS YEAR TO DATE:		LAST YEAR TO DATE:	
	NO.	%	NO.	%	NO.	%	NO.	%	NO.	%
MURDER & NON-NEGLIGENT MANSLAUGHTER <sup>1</sup>	3	60.0%	6	85.7%	7	100.0%	34	85.0%	35	56.5%
RAPE TOTAL	23	92.0%	20	80.0%	18	105.9%	182	77.1%	152	75.2%
ACTUAL	22	95.7%	19	79.2%	18	105.9%	171	79.5%	137	73.7%
ATTEMPT	1	50.0%	1	100.0%	0	NA	11	52.4%	15	93.8%
ROBBERY TOTAL	60	33.5%	48	22.9%	65	24.8%	500	29.0%	621	28.4%
ARMED	44	30.6%	33	19.6%	52	24.2%	366	26.7%	517	28.8%
STRONG-ARM	16	45.7%	15	35.7%	13	27.7%	134	38.1%	139	35.5%
AGGRAVATED ASSAULT TOTAL	151	67.7%	143	42.9%	157	57.7%	1381	60.8%	1466	51.0%
BURGLARY TOTAL	36	5.3%	199	23.4%	144	14.2%	774	10.8%	816	9.1%
RESIDENTIAL	89	14.1%	71	10.3%	92	11.8%	576	10.2%	595	8.8%
COMMERCIAL	-53	-110.4%	128	78.0%	52	22.3%	198	13.0%	221	9.9%
LARCENY TOTAL	444	21.0%	422	18.6%	400	19.3%	3728	19.1%	3339	14.4%
FROM AUTO	46	4.8%	74	6.4%	88	8.9%	501	5.1%	406	3.1%
BICYCLE	5	13.5%	5	13.5%	3	16.7%	25	11.6%	17	8.7%
SHOPLIFTING	260	72.6%	196	64.7%	157	67.4%	1972	69.6%	1654	71.4%
OTHERS	133	17.6%	147	18.8%	152	18.2%	1230	18.7%	1262	16.3%
VEHICLE THEFT TOTAL	28	12.1%	52	19.5%	47	11.5%	317	12.0%	491	11.8%
ARSON TOTAL	3	21.4%	4	22.2%	6	18.8%	60	29.4%	44	17.1%
TOTALS	748	21.5%	894	22.4%	844	20.7%	6976	20.6%	6964	16.6%
VIOLENT PROPERTY	237 511	54.9% 16.8%	217 677	37.7% 19.9%	247 597	44.3% 16.9%	2097 4879	49.1% 16.5%	2274 4690	42.7% 12.8%

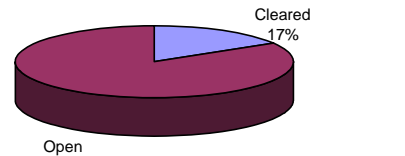
<sup>1</sup>NOTE : Clearances are reported in accordance with Uniform Crime Report guidelines. Since clearances are not counted for UCR until they are entered in the Records Management system, any delays in entry of the documentation may result in some clearances being reported later in succeeding months.

**Year-to-Date Violent Index Clearance Rate  
Charlotte-Mecklenburg Police Department: 2008**



Through September, 2009

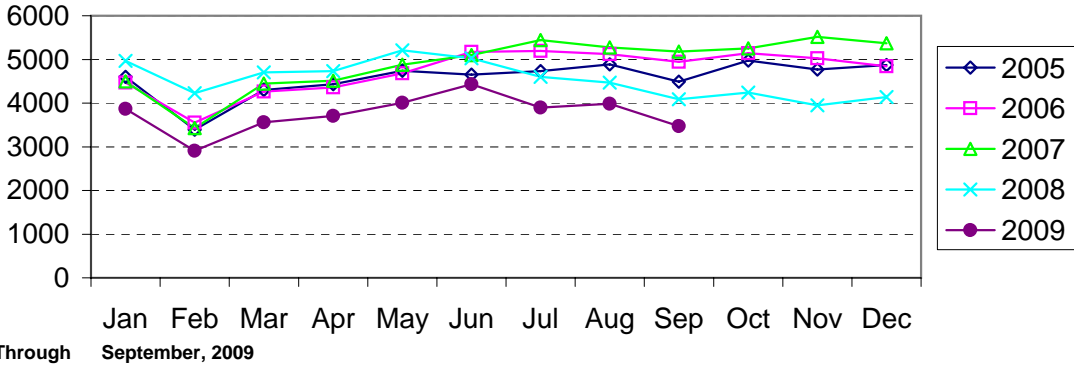
**Year-to-Date Property Index Clearance Rate  
Charlotte-Mecklenburg Police Department: 2008**



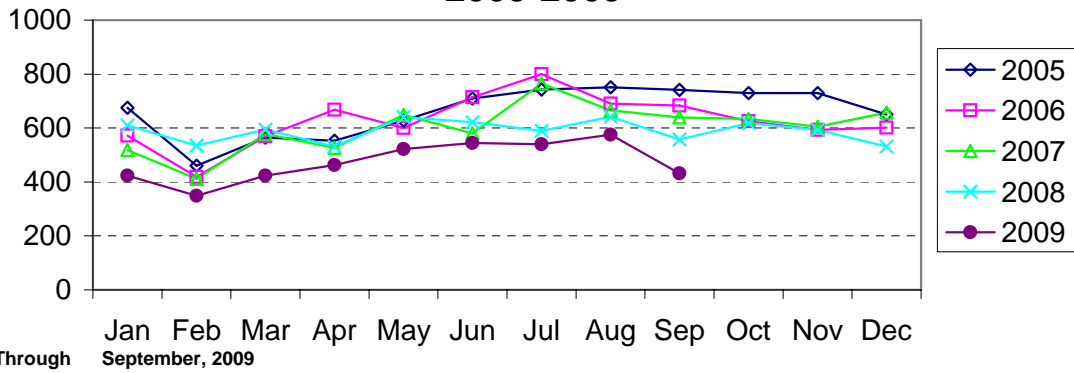
Through September, 2009

Clearance rates for crime reporting are calculated by dividing the number of crimes cleared during a designated time span by the number of crimes reported in the same period and converting the result to a percentage (multiplying by 100). Since cases from previous reporting periods can be cleared during the designated time span, the rate may be higher than 100%.

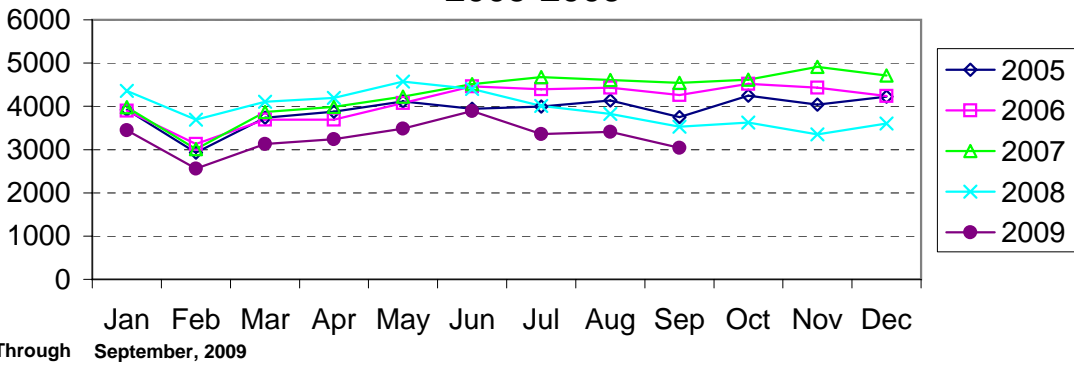
### Index Offenses Reported by Month Charlotte-Mecklenburg Police Department: 2005-2009



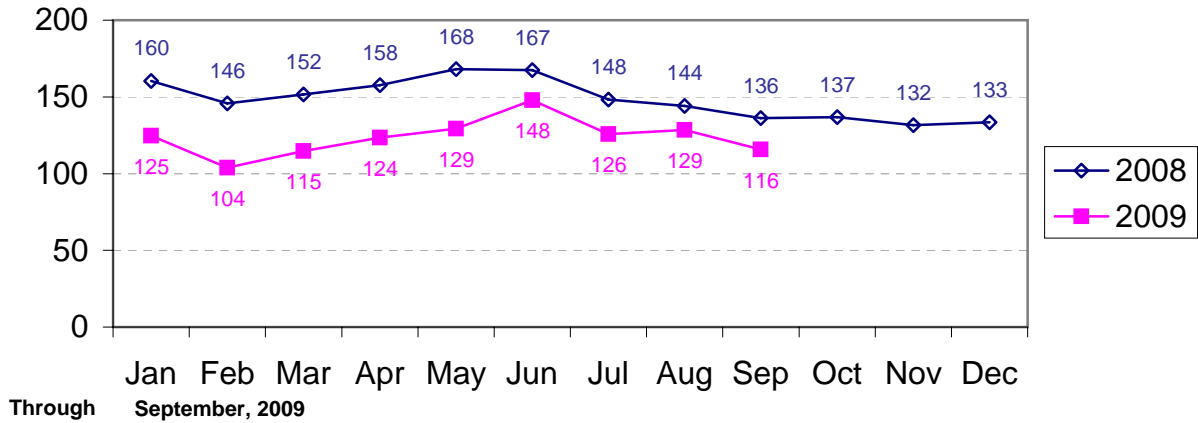
### Violent Index Offenses Reported by Month Charlotte-Mecklenburg Police Department: 2005-2009



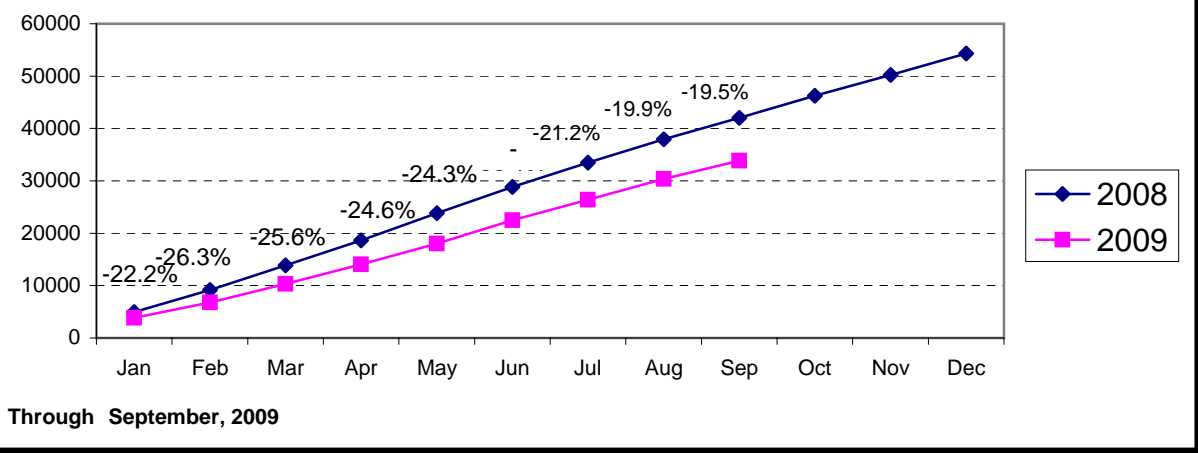
### Property Index Offenses Reported by Month Charlotte-Mecklenburg Police Department: 2005-2009



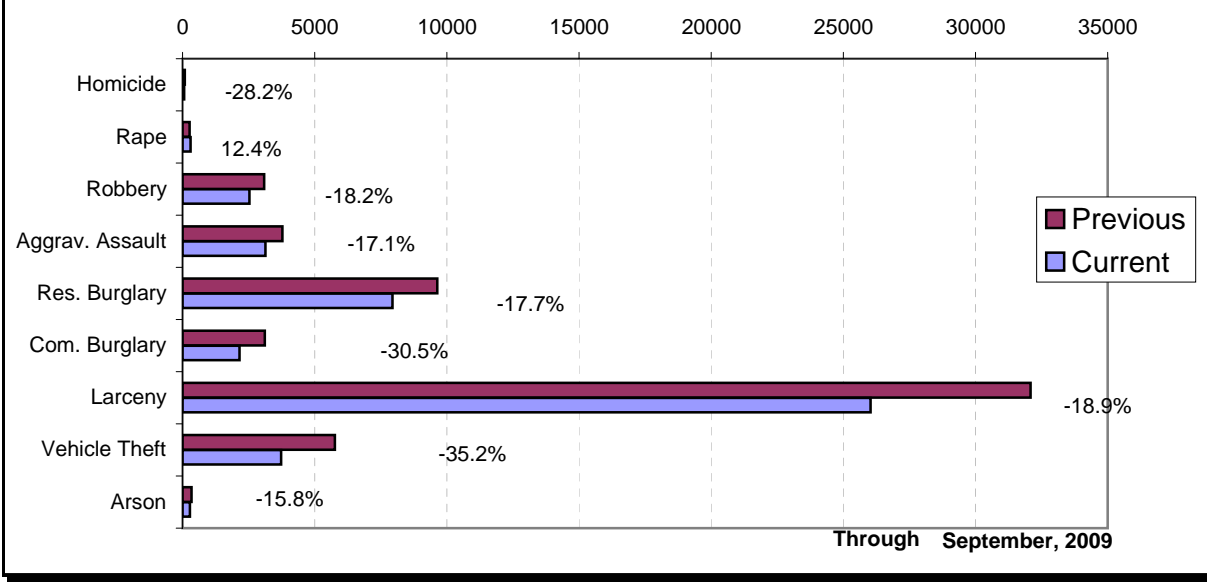
## Index Offense Per Day Average by Month Charlotte-Mecklenburg Police Department: 2008-2009



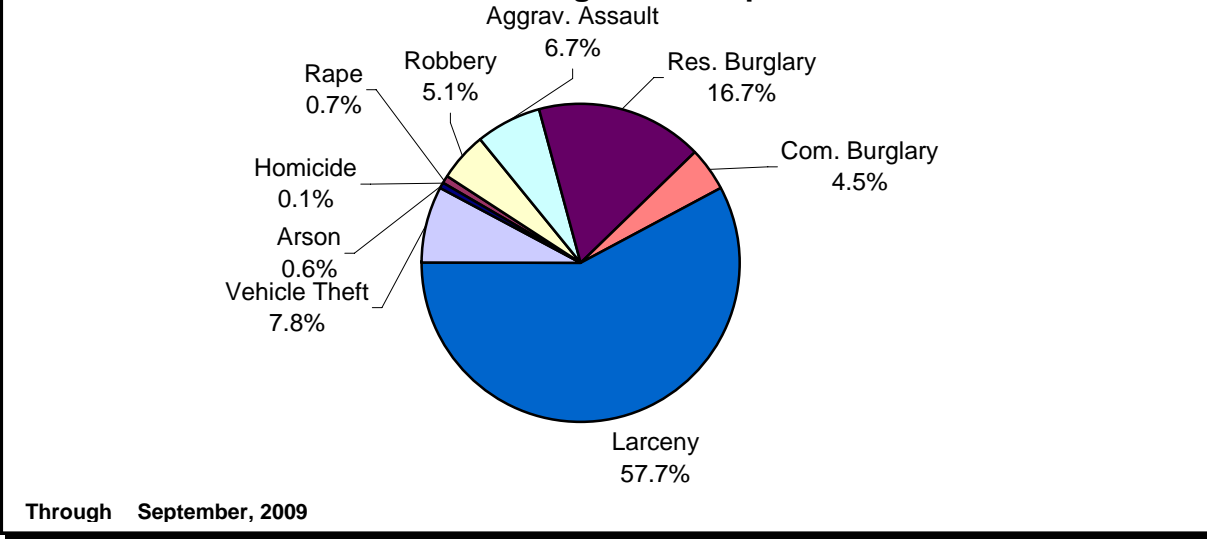
## Index Offenses Year-to-Date Cumulative Totals Charlotte-Mecklenburg Police Department: 2008-2009



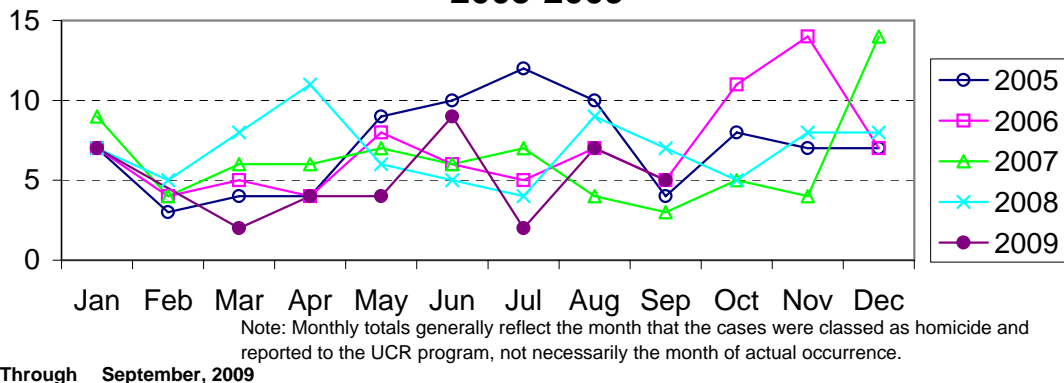
### Index Offenses in Current & Previous 12 Month Periods Charlotte-Mecklenburg Police Department



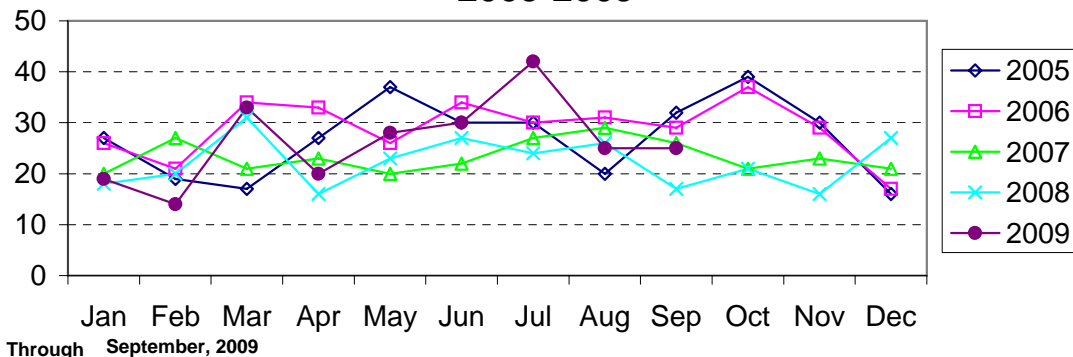
### Year-to-Date Index Offenses by Type Charlotte-Mecklenburg Police Department: 2009



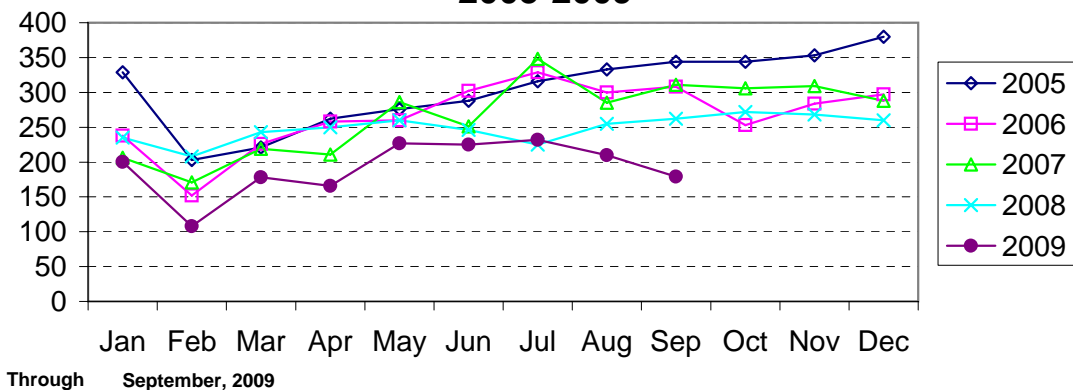
### Homicide Reported by Month Charlotte-Mecklenburg Police Department: 2005-2009



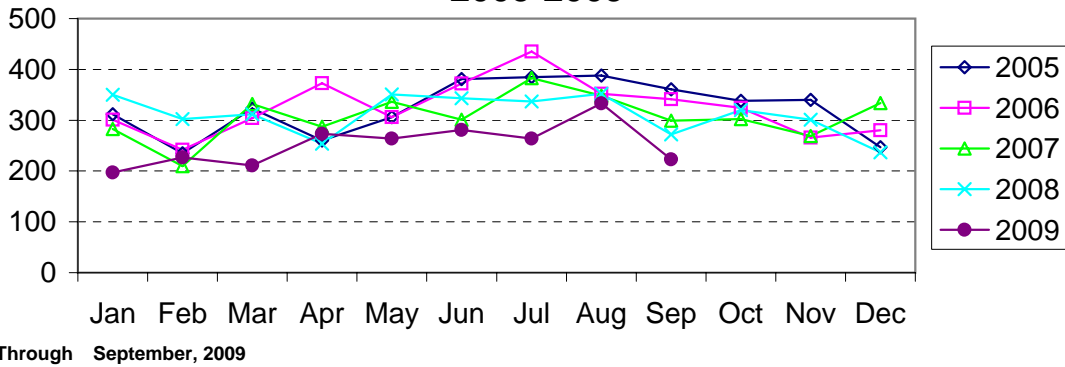
### Rape Reported by Month Charlotte-Mecklenburg Police Department: 2005-2009



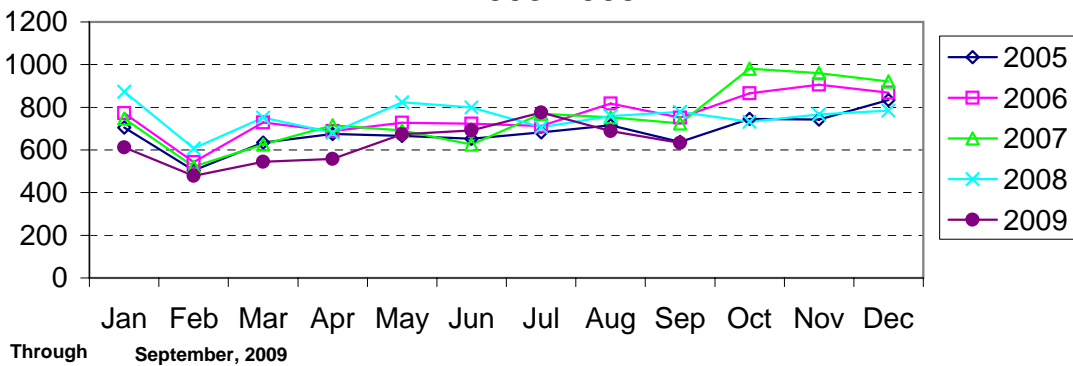
### Robbery Reported by Month Charlotte-Mecklenburg Police Department: 2005-2009



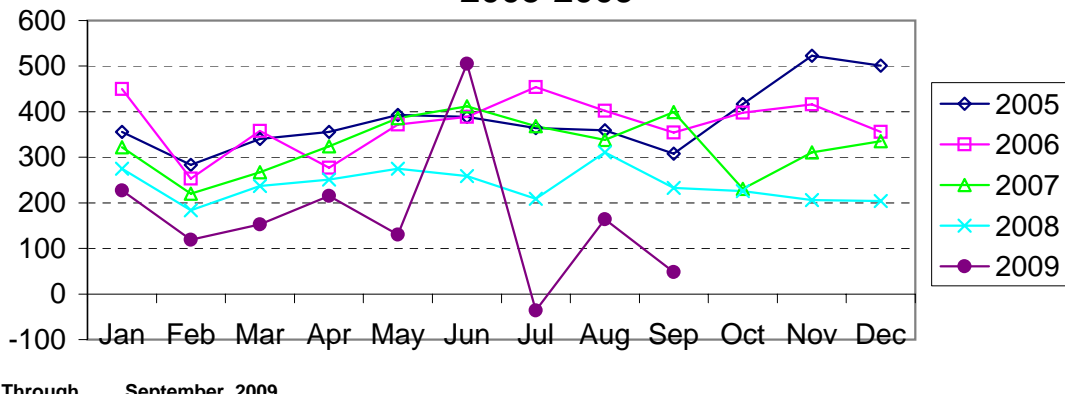
### Aggravated Assault Reported by Month Charlotte-Mecklenburg Police Department: 2005-2009



### Residential Burglary Reported by Month Charlotte-Mecklenburg Police Department: 2005-2009

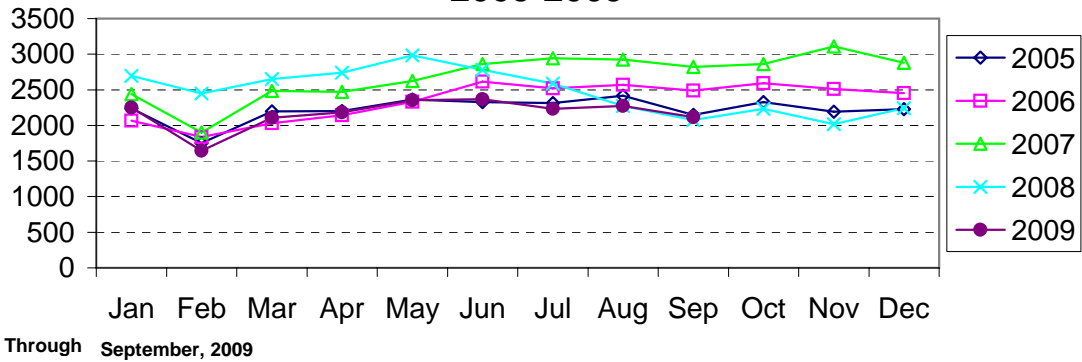


### Commercial Burglary Reported by Month Charlotte-Mecklenburg Police Department: 2005-2009

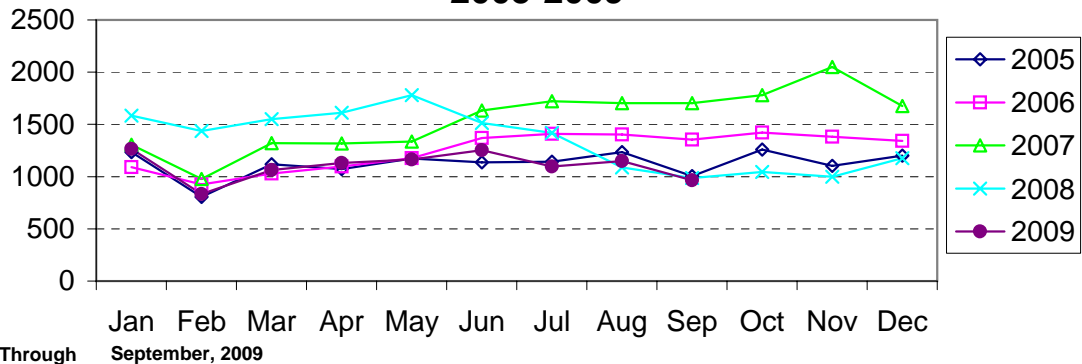




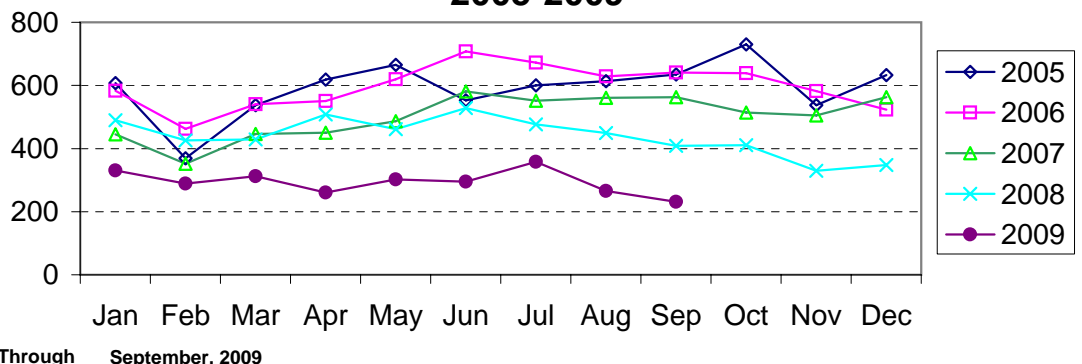
### Larceny Reported by Month Charlotte-Mecklenburg Police Department: 2005-2009



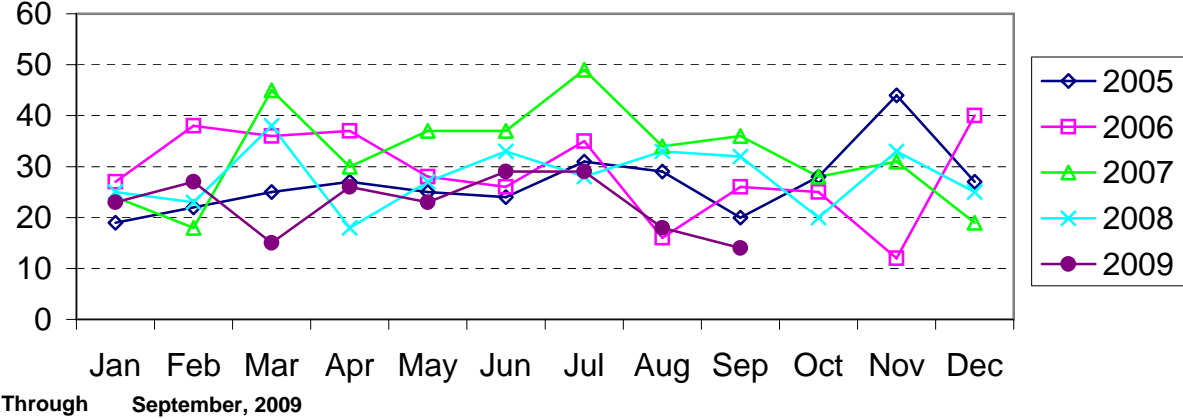
### Larceny from Vehicle Reported by Month Charlotte-Mecklenburg Police Department: 2005-2009



### Vehicle Theft Reported by Month Charlotte-Mecklenburg Police Department: 2005-2009



## Arson Reported by Month Charlotte-Mecklenburg Police Department: 2005-2009



**Index Offenses Reported By Division, September, 2009**

<b>Eastway Division (06)</b>								
	<u>Current</u> <u>month</u>	<u>Previous</u> <u>Month</u>	<u>Percent</u> <u>Change</u>	<u>Same Month</u> <u>Last Year</u>	<u>Percent</u> <u>Change</u>	<u>Current Year-</u> <u>to-Date</u>	<u>Past Year-</u> <u>to-Date</u>	<u>Percent</u> <u>Change</u>
MURDER & NON-NEGLIGENT MANSLAUGHTER	1	1	0.0%	1	0.0%	8	6	33.3%
RAPE	0	1	-100.0%	2	-100.0%	12	18	-33.3%
ROBBERY	22	15	46.7%	28	-21.4%	195	232	-15.9%
ARMED	19	13	46.2%	20	-5.0%	163	197	-17.3%
STRONG-ARM	3	2	50.0%	8	-62.5%	32	35	-8.6%
AGGRAVATED ASSAULT	14	28	-50.0%	21	-33.3%	203	278	-27.0%
BURGLARY	53	53	0.0%	76	-30.3%	541	755	-28.3%
RESIDENTIAL	50	41	22.0%	67	-25.4%	446	593	-24.8%
COMMERCIAL	3	12	-75.0%	9	-66.7%	95	162	-41.4%
LARCENY	143	132	8.3%	156	-8.3%	1329	1793	-25.9%
FROM AUTO	61	50	22.0%	67	-9.0%	621	915	-32.1%
BICYCLE	6	6	0.0%	0		30	25	20.0%
SHOPLIFTING	28	20	40.0%	30	-6.7%	247	326	-24.2%
OTHERS	48	56	-14.3%	59	-18.6%	431	527	-18.2%
VEHICLE THEFT	15	27	-44.4%	31	-51.6%	243	384	-36.7%
ARSON	4	2	100.0%	2	100.0%	17	23	-26.1%
TOTALS	252	259	-2.7%	317	-20.5%	2548	3489	-27.0%
VIOLENT PROPERTY	37 215	45 214	-17.8% 0.5%	52 265	-28.8% -18.9%	418 2130	534 2955	-21.7% -27.9%

<b>North Tryon Division (07)</b>								
	<u>Current</u> <u>month</u>	<u>Previous</u> <u>Month</u>	<u>Percent</u> <u>Change</u>	<u>Same Month</u> <u>Last Year</u>	<u>Percent</u> <u>Change</u>	<u>Current Year-</u> <u>to-Date</u>	<u>Past Year-</u> <u>to-Date</u>	<u>Percent</u> <u>Change</u>
MURDER & NON-NEGLIGENT MANSLAUGHTER	-1	4	-125.0%	0	NA	6	6	0.0%
RAPE	3	4	-25.0%	0	NA	33	19	73.7%
ROBBERY	26	28	-7.1%	33	-21.2%	213	276	-22.8%
ARMED	25	22	13.6%	29	-13.8%	175	240	-27.1%
STRONG-ARM	1	6	-83.3%	4	-75.0%	38	36	5.6%
AGGRAVATED ASSAULT	29	58	-50.0%	25	16.0%	275	252	9.1%
BURGLARY	-13	90	-114.4%	106	-112.3%	514	716	-28.2%
RESIDENTIAL	55	70	-21.4%	83	-33.7%	445	493	-9.7%
COMMERCIAL	-68	20	-440.0%	23	-395.7%	69	223	-69.1%
LARCENY	107	113	-5.3%	119	-10.1%	1096	1197	-8.4%
FROM AUTO	42	43	-2.3%	56	-25.0%	517	621	-16.7%
BICYCLE	0	5	-100.0%	0		10	7	42.9%
SHOPLIFTING	13	26	-50.0%	15	-13.3%	124	81	53.1%
OTHERS	52	39	33.3%	48	8.3%	445	488	-8.8%
VEHICLE THEFT	14	28	-50.0%	39	-64.1%	266	392	-32.1%
ARSON	2	3	-33.3%	2	0.0%	23	17	35.3%
TOTALS	167	422	-60.4%	324	-48.5%	2520	2875	-12.3%
VIOLENT PROPERTY	57 110	94 234	-39.4% -53.0%	58 266	-1.7% -58.6%	527 1899	553 2322	-4.7% -18.2%

**September, 2009**

<b>North Division (11)</b>								
	<u>Current month</u>	<u>Previous Month</u>	<u>Percent Change</u>	<u>Same Month Last Year</u>	<u>Percent Change</u>	<u>Current Year to-Date</u>	<u>Past Year to-Date</u>	<u>Percent Change</u>
MURDER & NON-NEGLIGENT MANSLAUGHTER	0	0	NA	1	-100.0%	4	8	-50.0%
RAPE	4	1	300.0%	0	NA	22	10	120.0%
ROBBERY	9	20	-55.0%	20	-55.0%	110	108	1.9%
ARMED	7	16	-56.3%	18	-61.1%	82	95	-13.7%
STRONG-ARM	2	4	-50.0%	2	0.0%	28	13	115.4%
AGGRAVATED ASSAULT	14	24	-41.7%	7	100.0%	166	219	-24.2%
BURGLARY	96	91	5.5%	94	2.1%	846	1152	-26.6%
RESIDENTIAL	88	81	8.6%	83	6.0%	745	921	-19.1%
COMMERCIAL	8	10	-20.0%	11	-27.3%	101	231	-56.3%
LARCENY	165	200	-17.5%	196	-15.8%	1739	1902	-8.6%
FROM AUTO	71	92	-22.8%	98	-27.6%	890	962	-7.5%
BICYCLE	2	5	-60.0%	0	NA	13	10	30.0%
SHOPLIFTING	44	29	51.7%	34	29.4%	339	309	9.7%
OTHERS	48	74	-35.1%	64	-25.0%	497	621	-20.0%
VEHICLE THEFT	12	22	-45.5%	25	-52.0%	187	302	-38.1%
ARSON	1	1	0.0%	4	-75.0%	16	28	-42.9%
TOTALS	301	359	-16.2%	347	-13.3%	3090	3729	-17.1%
VIOLENT PROPERTY	27 274	45 314	-40.0% -12.7%	28 319	-3.6% -14.1%	302 2788	345 3384	-12.5% -17.6%

<b>University City Division (14)</b>								
	<u>Current month</u>	<u>Previous Month</u>	<u>Percent Change</u>	<u>Same Month Last Year</u>	<u>Percent Change</u>	<u>Current Year to-Date</u>	<u>Past Year to-Date</u>	<u>Percent Change</u>
MURDER & NON-NEGLIGENT MANSLAUGHTER	2	1	100.0%	0	NA	3	3	0.0%
RAPE	3	2	50.0%	1	200.0%	19	12	58.3%
ROBBERY	15	17	-11.8%	10	50.0%	122	151	-19.2%
ARMED	9	14	-35.7%	10	-10.0%	94	128	-26.6%
STRONG-ARM	6	3	100.0%	0	NA	28	23	21.7%
AGGRAVATED ASSAULT	9	11	-18.2%	5	80.0%	115	119	-3.4%
BURGLARY	74	73	1.4%	66	12.1%	612	751	-18.5%
RESIDENTIAL	63	60	5.0%	51	23.5%	518	600	-13.7%
COMMERCIAL	11	13	-15.4%	15	-26.7%	94	151	-37.7%
LARCENY	246	224	9.8%	191	28.8%	1891	2519	-24.9%
FROM AUTO	114	104	9.6%	98	16.3%	1013	1597	-36.6%
BICYCLE	6	1	500.0%	0		18	10	80.0%
SHOPLIFTING	60	31	93.5%	20	200.0%	281	252	11.5%
OTHERS	66	88	-25.0%	73	-9.6%	579	660	-12.3%
VEHICLE THEFT	24	13	84.6%	26	-7.7%	229	336	-31.8%
ARSON	2	0	NA	2	0.0%	11	23	-52.2%
TOTALS	375	341	10.0%	301	24.6%	3001	3914	-23.3%
VIOLENT PROPERTY	29 346	31 310	-6.5% 11.6%	16 285	81.3% 21.4%	258 2743	285 3629	-9.5% -24.4%

**September, 2009**

<b>Hickory Grove Division (12)</b>								
	<u>Current month</u>	<u>Previous Month</u>	<u>Percent Change</u>	<u>Same Month Last Year</u>	<u>Percent Change</u>	<u>Current Year-to-Date</u>	<u>Past Year-to-Date</u>	<u>Percent Change</u>
MURDER & NON-NEGLIGENT MANSLAUGHTER	0	0	NA	0	NA	1	4	-75.0%
RAPE	1	5	-80.0%	3	-66.7%	22	14	57.1%
ROBBERY	13	15	-13.3%	13	0.0%	113	134	-15.7%
ARMED	12	11	9.1%	11	9.1%	96	115	-16.5%
STRONG-ARM	1	4	-75.0%	2	-50.0%	17	19	-10.5%
AGGRAVATED ASSAULT	16	29	-44.8%	18	-11.1%	134	141	-5.0%
BURGLARY	61	55	10.9%	98	-37.8%	553	658	-16.0%
RESIDENTIAL	49	40	22.5%	76	-35.5%	444	544	-18.4%
COMMERCIAL	12	15	-20.0%	22	-45.5%	109	114	-4.4%
LARCENY	119	146	-18.5%	133	-10.5%	1025	1180	-13.1%
FROM AUTO	45	69	-34.8%	71	-36.6%	430	604	-28.8%
BICYCLE	0	3	-100.0%	0		11	15	-26.7%
SHOPLIFTING	19	17	11.8%	10	90.0%	140	102	37.3%
OTHERS	55	57	-3.5%	52	5.8%	444	459	-3.3%
VEHICLE THEFT	12	11	9.1%	34	-64.7%	157	365	-57.0%
ARSON	1	4	-75.0%	3	-66.7%	15	20	-25.0%
TOTALS	223	265	-15.8%	302	-26.2%	2020	2516	-19.7%
VIOLENT PROPERTY	30	49	-38.8%	34	-11.8%	270	293	-7.8%
PROPERTY	193	216	-10.6%	268	-28.0%	1750	2223	-21.3%

<b>Independence Division (17)</b>								
	<u>Current month</u>	<u>Previous Month</u>	<u>Percent Change</u>	<u>Same Month Last Year</u>	<u>Percent Change</u>	<u>Current Year-to-Date</u>	<u>Past Year-to-Date</u>	<u>Percent Change</u>
MURDER & NON-NEGLIGENT MANSLAUGHTER	0	1	-100.0%	0	NA	1	4	-75.0%
RAPE	0	2	-100.0%	3	-100.0%	17	14	21.4%
ROBBERY	19	15	26.7%	19	0.0%	161	171	-5.8%
ARMED	15	14	7.1%	15	0.0%	133	142	-6.3%
STRONG-ARM	4	1	300.0%	4	0.0%	28	29	-3.4%
AGGRAVATED ASSAULT	16	16	0.0%	20	-20.0%	163	207	-21.3%
BURGLARY	68	77	-11.7%	80	-15.0%	519	668	-22.3%
RESIDENTIAL	55	69	-20.3%	69	-20.3%	446	511	-12.7%
COMMERCIAL	13	8	62.5%	11	18.2%	73	157	-53.5%
LARCENY	152	199	-23.6%	141	7.8%	1440	1423	1.2%
FROM AUTO	63	120	-47.5%	71	-11.3%	710	814	-12.8%
BICYCLE	4	1	300.0%	4		18	31	-41.9%
SHOPLIFTING	25	31	-19.4%	8	212.5%	256	139	84.2%
OTHERS	60	47	27.7%	58	3.4%	456	439	3.9%
VEHICLE THEFT	22	27	-18.5%	33	-33.3%	204	285	-28.4%
ARSON	0	1	-100.0%	2	-100.0%	18	16	12.5%
TOTALS	277	338	-18.0%	298	-7.0%	2523	2788	-9.5%
VIOLENT PROPERTY	35	34	2.9%	42	-16.7%	342	396	-13.6%
PROPERTY	242	304	-20.4%	256	-5.5%	2181	2392	-8.8%

**September, 2009**

<b>Providence Division (16)</b>								
	<u>Current month</u>	<u>Previous Month</u>	<u>Percent Change</u>	<u>Same Month Last Year</u>	<u>Percent Change</u>	<u>Current Year-to-Date</u>	<u>Past Year-to-Date</u>	<u>Percent Change</u>
MURDER & NON-NEGLIGENT MANSLAUGHTER	0	0	NA	0	NA	0	1	-100.0%
RAPE	1	2	-50.0%	2	-50.0%	12	13	-7.7%
ROBBERY	11	12	-8.3%	18	-38.9%	78	109	-28.4%
ARMED	9	9	0.0%	14	-35.7%	56	72	-22.2%
STRONG-ARM	2	3	-33.3%	4	-50.0%	22	37	-40.5%
AGGRAVATED ASSAULT	8	5	60.0%	11	-27.3%	116	124	-6.5%
BURGLARY	39	51	-23.5%	68	-42.6%	482	675	-28.6%
RESIDENTIAL	25	38	-34.2%	42	-40.5%	368	491	-25.1%
COMMERCIAL	14	13	7.7%	26	-46.2%	114	184	-38.0%
LARCENY	171	203	-15.8%	170	0.6%	1790	2173	-17.6%
FROM AUTO	94	125	-24.8%	86	9.3%	1063	1340	-20.7%
BICYCLE	6	2	200.0%	1		24	16	50.0%
SHOPLIFTING	27	24	12.5%	17	58.8%	258	188	37.2%
OTHERS	44	52	-15.4%	66	-33.3%	445	629	-29.3%
VEHICLE THEFT	11	10	10.0%	31	-64.5%	115	253	-54.5%
ARSON	0	0	NA	4	-100.0%	6	13	-53.8%
TOTALS	241	283	-14.8%	304	-20.7%	2599	3361	-22.7%
VIOLENT PROPERTY	20	19	5.3%	31	-35.5%	206	247	-16.6%
	221	264	-16.3%	273	-19.0%	2393	3114	-23.2%

<b>South Division (22)</b>								
	<u>Current month</u>	<u>Previous Month</u>	<u>Percent Change</u>	<u>Same Month Last Year</u>	<u>Percent Change</u>	<u>Current Year-to-Date</u>	<u>Past Year-to-Date</u>	<u>Percent Change</u>
MURDER & NON-NEGLIGENT MANSLAUGHTER	0	0	NA	1	-100.0%	0	1	-100.0%
RAPE	1	0	NA	2	-50.0%	7	7	0.0%
ROBBERY	1	7	-85.7%	7	-85.7%	31	46	-32.6%
ARMED	1	5	-80.0%	4	-75.0%	23	32	-28.1%
STRONG-ARM	0	2	-100.0%	3	-100.0%	8	14	-42.9%
AGGRAVATED ASSAULT	6	13	-53.8%	1	500.0%	65	77	-15.6%
BURGLARY	40	44	-9.1%	44	-9.1%	306	489	-37.4%
RESIDENTIAL	34	35	-2.9%	38	-10.5%	262	384	-31.8%
COMMERCIAL	6	9	-33.3%	6	0.0%	44	105	-58.1%
LARCENY	150	163	-8.0%	146	2.7%	1437	1694	-15.2%
FROM AUTO	74	100	-26.0%	75	-1.3%	770	1046	-26.4%
BICYCLE	0	2	-100.0%	0		21	14	50.0%
SHOPLIFTING	17	8	112.5%	20	-15.0%	165	135	22.2%
OTHERS	59	53	11.3%	51	15.7%	481	499	-3.6%
VEHICLE THEFT	12	11	9.1%	11	9.1%	84	127	-33.9%
ARSON	0	1	-100.0%	3	-100.0%	13	14	-7.1%
TOTALS	210	239	-12.1%	215	-2.3%	1943	2455	-20.9%
VIOLENT PROPERTY	8	20	-60.0%	11	-27.3%	103	131	-21.4%
	202	219	-7.8%	204	-1.0%	1840	2324	-20.8%

**September, 2009**

<b>Westover Division (26)</b>								
	<u>Current month</u>	<u>Previous Month</u>	<u>Percent Change</u>	<u>Same Month Last Year</u>	<u>Percent Change</u>	<u>Current Year-to-Date</u>	<u>Past Year-to-Date</u>	<u>Percent Change</u>
MURDER & NON-NEGLIGENT MANSLAUGHTER	0	0	NA	2	-100.0%	6	9	-33.3%
RAPE	2	-1	-300.0%	1	100.0%	15	23	-34.8%
ROBBERY	13	19	-31.6%	27	-51.9%	195	225	-13.3%
ARMED	11	15	-26.7%	24	-54.2%	163	181	-9.9%
STRONG-ARM	2	4	-50.0%	3	-33.3%	32	44	-27.3%
AGGRAVATED ASSAULT	23	49	-53.1%	62	-62.9%	254	372	-31.7%
BURGLARY	52	68	-23.5%	70	-25.7%	570	692	-17.6%
RESIDENTIAL	41	52	-21.2%	53	-22.6%	397	511	-22.3%
COMMERCIAL	11	16	-31.3%	17	-35.3%	173	181	-4.4%
LARCENY	143	162	-11.7%	154	-7.1%	1380	1804	-23.5%
FROM AUTO	64	61	4.9%	68	-5.9%	615	1016	-39.5%
BICYCLE	1	2	-50.0%	4		14	14	0.0%
SHOPLIFTING	24	26	-7.7%	17	41.2%	214	154	39.0%
OTHERS	54	73	-26.0%	65	-16.9%	537	620	-13.4%
VEHICLE THEFT	24	24	0.0%	29	-17.2%	217	353	-38.5%
ARSON	0	0	NA	2	-100.0%	13	24	-45.8%
TOTALS	257	321	-19.9%	347	-25.9%	2650	3502	-24.3%
VIOLENT PROPERTY	38	67	-43.3%	92	-58.7%	470	629	-25.3%
	219	254	-13.8%	255	-14.1%	2180	2873	-24.1%

<b>Steele Creek Division (21)</b>								
	<u>Current month</u>	<u>Previous Month</u>	<u>Percent Change</u>	<u>Same Month Last Year</u>	<u>Percent Change</u>	<u>Current Year-to-Date</u>	<u>Past Year-to-Date</u>	<u>Percent Change</u>
MURDER & NON-NEGLIGENT MANSLAUGHTER	0	0	NA	1	-100.0%	1	8	-87.5%
RAPE	1	1	0.0%	0	NA	20	13	53.8%
ROBBERY	13	21	-38.1%	21	-38.1%	148	210	-29.5%
ARMED	10	19	-47.4%	17	-41.2%	126	178	-29.2%
STRONG-ARM	3	2	50.0%	4	-25.0%	22	32	-31.3%
AGGRAVATED ASSAULT	19	13	46.2%	29	-34.5%	145	200	-27.5%
BURGLARY	62	71	-12.7%	63	-1.6%	644	691	-6.8%
RESIDENTIAL	48	52	-7.7%	47	2.1%	414	530	-21.9%
COMMERCIAL*(see note)	14	19	-26.3%	16	-12.5%	230	161	42.9%
LARCENY	196	212	-7.5%	186	5.4%	1774	2433	-27.1%
FROM AUTO	87	110	-20.9%	89	-2.2%	881	1444	-39.0%
BICYCLE	2	1	100.0%	3		13	10	30.0%
SHOPLIFTING	38	32	18.8%	18	111.1%	262	239	9.6%
OTHERS	69	69	0.0%	76	-9.2%	618	740	-16.5%
VEHICLE THEFT	17	26	-34.6%	54	-68.5%	279	418	-33.3%
ARSON	2	1	100.0%	2	0.0%	21	32	-34.4%
TOTALS	310	345	-10.1%	356	-12.9%	3032	4005	-24.3%
VIOLENT PROPERTY	33	35	-5.7%	51	-35.3%	314	431	-27.1%
	277	310	-10.6%	305	-9.2%	2718	3574	-24.0%

**September, 2009**

<b>Metro Division (02)</b>								
	<u>Current month</u>	<u>Previous Month</u>	<u>Percent Change</u>	<u>Same Month Last Year</u>	<u>Percent Change</u>	<u>Current Year-to-Date</u>	<u>Past Year-to-Date</u>	<u>Percent Change</u>
MURDER & NON-NEGLIGENT MANSLAUGHTER	1	0	NA	0	NA	2	8	-75.0%
RAPE	1	3	-66.7%	0	NA	16	20	-20.0%
ROBBERY	21	21	0.0%	30	-30.0%	167	247	-32.4%
ARMED	16	15	6.7%	23	-30.4%	117	201	-41.8%
STRONG-ARM	5	6	-16.7%	7	-28.6%	50	46	8.7%
AGGRAVATED ASSAULT	32	60	-46.7%	43	-25.6%	355	466	-23.8%
BURGLARY	58	83	-30.1%	99	-41.4%	673	762	-11.7%
RESIDENTIAL	49	65	-24.6%	68	-27.9%	477	499	-4.4%
COMMERCIAL	9	18	-50.0%	31	-71.0%	196	263	-25.5%
LARCENY	156	135	15.6%	162	-3.7%	1526	1654	-7.7%
FROM AUTO	73	73	0.0%	70	4.3%	836	781	7.0%
BICYCLE	3	3	0.0%	4		13	20	-35.0%
SHOPLIFTING	22	10	120.0%	24	-8.3%	141	156	-9.6%
OTHERS	58	49	18.4%	64	-9.4%	536	697	-23.1%
VEHICLE THEFT	32	19	68.4%	46	-30.4%	233	394	-40.9%
ARSON	1	2	-50.0%	3	-66.7%	21	24	-12.5%
TOTALS	302	323	-6.5%	383	-21.1%	2993	3575	-16.3%
VIOLENT PROPERTY	55 247	84 239	-34.5% 3.3%	73 310	-24.7% -20.3%	540 2453	741 2834	-27.1% -13.4%

<b>Freedom Division (27)</b>								
	<u>Current month</u>	<u>Previous Month</u>	<u>Percent Change</u>	<u>Same Month Last Year</u>	<u>Percent Change</u>	<u>Current Year-to-Date</u>	<u>Past Year-to-Date</u>	<u>Percent Change</u>
MURDER & NON-NEGLIGENT MANSLAUGHTER	2	0	NA	0	NA	8	2	300.0%
RAPE	4	2	100.0%	0	NA	21	19	10.5%
ROBBERY	10	12	-16.7%	22	-54.5%	111	183	-39.3%
ARMED	7	11	-36.4%	17	-58.8%	88	149	-40.9%
STRONG-ARM	3	1	200.0%	5	-40.0%	23	34	-32.4%
AGGRAVATED ASSAULT	25	15	66.7%	23	8.7%	183	320	-42.8%
BURGLARY	79	82	-3.7%	121	-34.7%	778	775	0.4%
RESIDENTIAL	69	74	-6.8%	93	-25.8%	613	602	1.8%
COMMERCIAL	10	8	25.0%	28	-64.3%	165	173	-4.6%
LARCENY	170	209	-18.7%	177	-4.0%	1561	1855	-15.8%
FROM AUTO	71	114	-37.7%	78	-9.0%	752	995	-24.4%
BICYCLE	1	3	-66.7%	1		12	12	0.0%
SHOPLIFTING	24	31	-22.6%	14	71.4%	258	130	98.5%
OTHERS	74	61	21.3%	84	-11.9%	539	718	-24.9%
VEHICLE THEFT	23	36	-36.1%	37	-37.8%	331	400	-17.3%
ARSON	1	3	-66.7%	2	-50.0%	27	20	35.0%
TOTALS	314	359	-12.5%	382	-17.8%	3020	3574	-15.5%
VIOLENT PROPERTY	41 273	29 330	41.4% -17.3%	45 337	-8.9% -19.0%	323 2697	524 3050	-38.4% -11.6%



**September, 2009**

<b>Central Division (01)</b>								
	<u>Current</u> <u>month</u>	<u>Previous</u> <u>Month</u>	<u>Percent</u> <u>Change</u>	<u>Same Month</u> <u>Last Year</u>	<u>Percent</u> <u>Change</u>	<u>Current Year-</u> <u>to-Date</u>	<u>Past Year-</u> <u>to-Date</u>	<u>Percent</u> <u>Change</u>
MURDER & NON-NEGLIGENT MANSLAUGHTER	0	0	NA	1	-100.0%	0	2	-100.0%
RAPE	4	3	33.3%	3	33.3%	19	20	-5.0%
ROBBERY	6	8	-25.0%	13	-53.8%	81	91	-11.0%
ARMED	3	4	-25.0%	12	-75.0%	57	62	-8.1%
STRONG-ARM	3	4	-25.0%	1	200.0%	24	29	-17.2%
AGGRAVATED ASSAULT	11	12	-8.3%	7	57.1%	98	89	10.1%
BURGLARY	11	12	-8.3%	27	-59.3%	132	221	-40.3%
RESIDENTIAL	7	9	-22.2%	9	-22.2%	72	95	-24.2%
COMMERCIAL	4	3	33.3%	18	-77.8%	60	126	-52.4%
LARCENY	196	173	13.3%	142	38.0%	1532	1591	-3.7%
FROM AUTO	104	88	18.2%	58	79.3%	815	824	-1.1%
BICYCLE	6	3	100.0%	1	500.0%	19	10	90.0%
SHOPLIFTING	17	18	-5.6%	6	183.3%	148	103	43.7%
OTHERS	69	64	7.8%	77	-10.4%	550	654	-15.9%
VEHICLE THEFT	13	12	8.3%	13	0.0%	99	163	-39.3%
ARSON	0	0	NA	1	-100.0%	3	3	0.0%
TOTALS	241	220	9.5%	207	16.4%	1964	2180	-9.9%
VIOLENT PROPERTY	21 220	23 197	-8.7% 11.7%	24 183	-12.5% 20.2%	198 1766	202 1978	-2.0% -10.7%

**Arrests by Charlotte-Mecklenburg Police Department  
Year-To-Date: 2008-2009  
(Through September)**

CATEGORY	ADULTS (AGE 18 & OLDER):			JUVENILES ( UNDER 18):			TOTAL ARRESTS:		
	2008 Y-T-D	2009 Y-T-D	% CHANGE	2008 Y-T-D	2009 Y-T-D	% CHANGE	2008 Y-T-D	2009 Y-T-D	% CHANGE
Murder/Non-Negligent Manslaughter	20	36	80.0%	2	2	0.0%	22	38	72.7%
Negligent & Vehicular Manslaughter	3	2	-33.3%	1	0	-100.0%	4	2	-50.0%
Rape	21	22	4.8%	4	3	-25.0%	25	25	0.0%
Robbery	322	306	-5.0%	96	109	13.5%	418	415	-0.7%
Aggravated Assault	1149	1444	25.7%	139	164	18.0%	1288	1608	24.8%
Burglary	525	561	6.9%	320	316	-1.3%	845	877	3.8%
Larceny	1359	1553	14.3%	470	550	17.0%	1829	2103	15.0%
Vehicle Theft	90	66	-26.7%	82	48	-41.5%	172	114	-33.7%
Non-Aggravated Assault	1565	1761	12.5%	540	544	0.7%	2105	2305	9.5%
Arson	9	12	33.3%	20	25	25.0%	29	37	27.6%
Forgery/Counterfeit	95	121	27.4%	1	1	0.0%	96	122	27.1%
Fraud	366	390	6.6%	6	3	-50.0%	372	393	5.6%
Embezzlement	96	80	-16.7%	14	5	-64.3%	110	85	-22.7%
Stolen Property	384	357	-7.0%	86	60	-30.2%	470	417	-11.3%
Vandalism	158	187	18.4%	148	149	0.7%	306	336	9.8%
Weapons	621	508	-18.2%	117	149	27.4%	738	657	-11.0%
Prostitution	169	207	22.5%	3	3	0.0%	172	210	22.1%
Sex Offenses	131	144	9.9%	11	12	9.1%	142	156	9.9%
Drugs	2686	2707	0.8%	298	337	13.1%	2984	3044	2.0%
Gambling	6	18	200.0%	0	0	NA	6	18	200.0%
Offenses vs. Family	5	4	-20.0%	0	0	NA	5	4	-20.0%
DUI	1757	1755	-0.1%	7	10	42.9%	1764	1765	0.1%
Liquor	222	316	42.3%	30	36	20.0%	252	352	39.7%
Disorder Conduct	558	616	10.4%	235	214	-8.9%	793	830	4.7%
Other Non-Traffic	6003	6389	6.4%	565	628	11.2%	6568	7017	6.8%
<b>VIOLENT INDEX<sup>1</sup></b>	1512	1808	19.6%	241	278	15.4%	1753	2086	19.0%
<b>PROPERTY INDEX<sup>2</sup></b>	1983	2192	10.5%	892	939	5.3%	2875	3131	8.9%
<b>INDEX SUBTOTAL</b>	3495	4000	14.4%	1133	1217	7.4%	4628	5217	12.7%
<b>PART 2 SUBTOTAL<sup>3</sup></b>	14825	15562	5.0%	2062	2151	4.3%	16887	17713	4.9%
<b>TOTAL</b>	18320	19562	6.8%	3195	3368	5.4%	21515	22930	6.6%

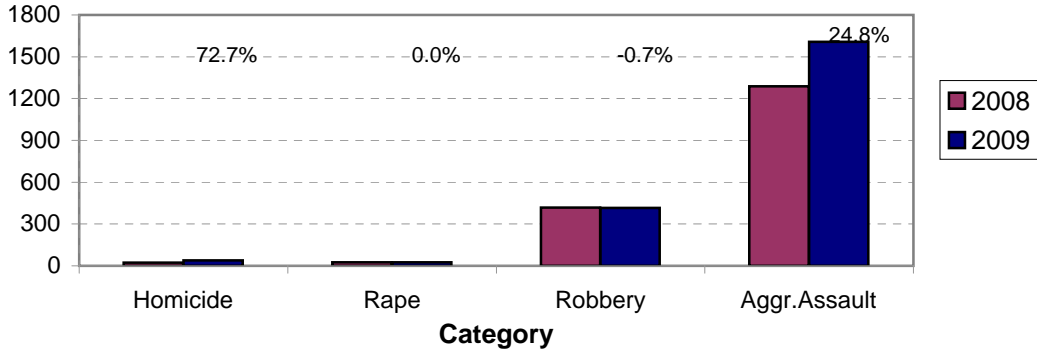
Note: Monthly totals under 18 for 2007 and 2008 were adjusted in April, 2008, to include some juvenile arrests (under 16) that were not originally counted in the arrest data due to an error in the computer program.

<sup>1</sup>Violent Index includes murder and non-negligent manslaughter, rape, robbery, and aggravated assault.

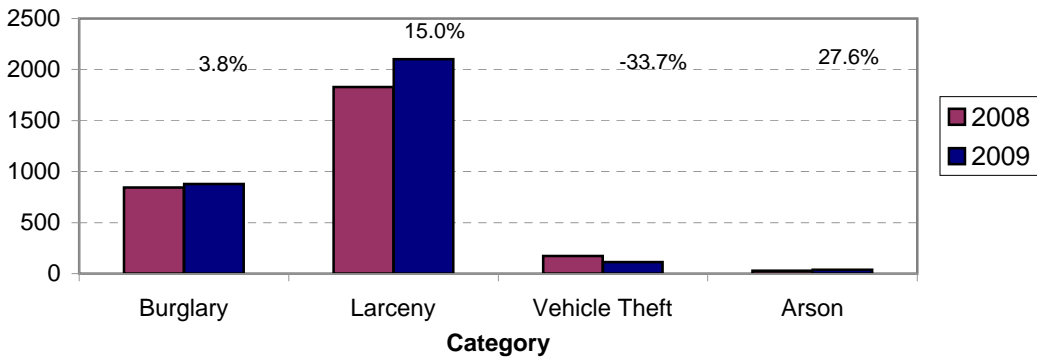
<sup>2</sup>Property Index includes burglary, larceny, vehicle theft, and arson.

<sup>3</sup>Part 2 crimes include crime categories not counted in the Index totals.

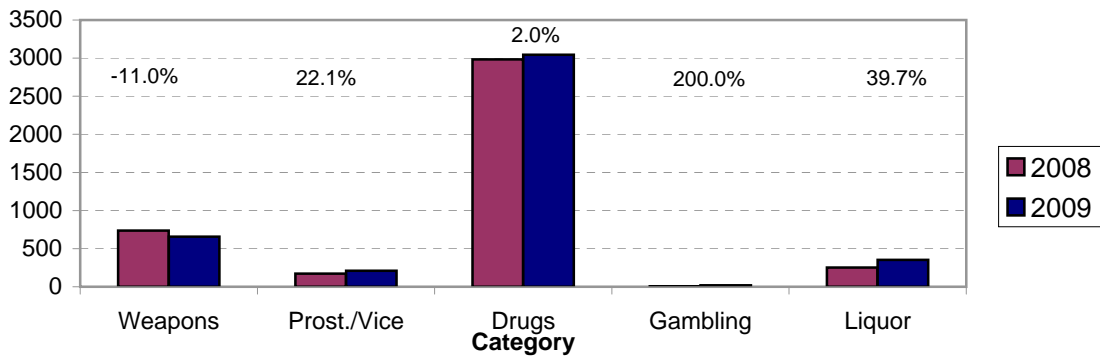
**Violent Index Arrests Year-to-Date  
Charlotte-Mecklenburg Police Department: 2008-2009  
(Through September)**



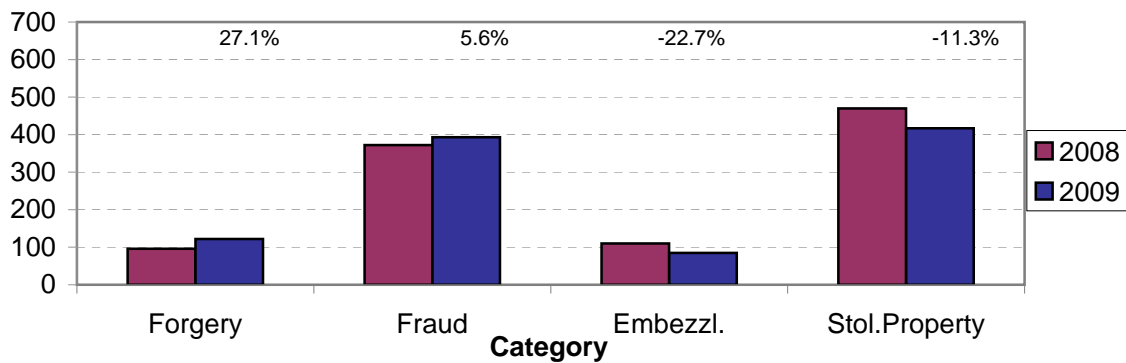
**Property Index Arrests Year-to-Date  
Charlotte-Mecklenburg Police Department: 2008-2009  
(Through September)**



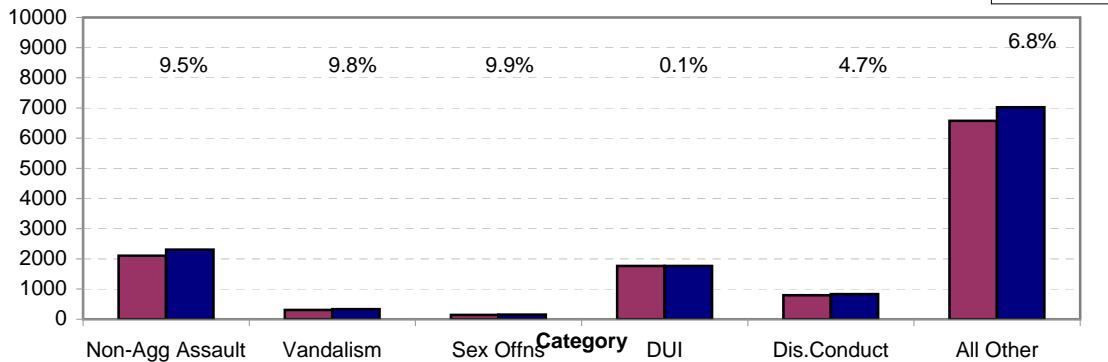
**Arrests for Vice/CCW/Drugs/Etc. Year-to-Date  
Charlotte-Mecklenburg Police Department: 2008-2009  
(Through September)**



**Arrests for Property/White Collar Crime Year-to-Date  
Charlotte-Mecklenburg Police Department: 2006-2009  
(Through September)**



**Arrests for Other Categories Year-to-Date  
Charlotte-Mecklenburg Police Department: 2008-2009  
(Through September)**

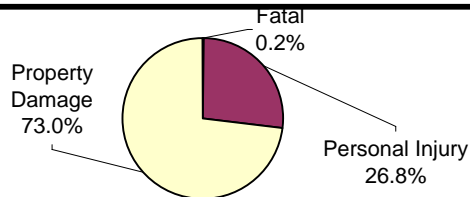


**Traffic Collision Reports Recorded by  
Charlotte-Mecklenburg Police Department  
2009 Year-to-Date (See note)  
(Through September)**

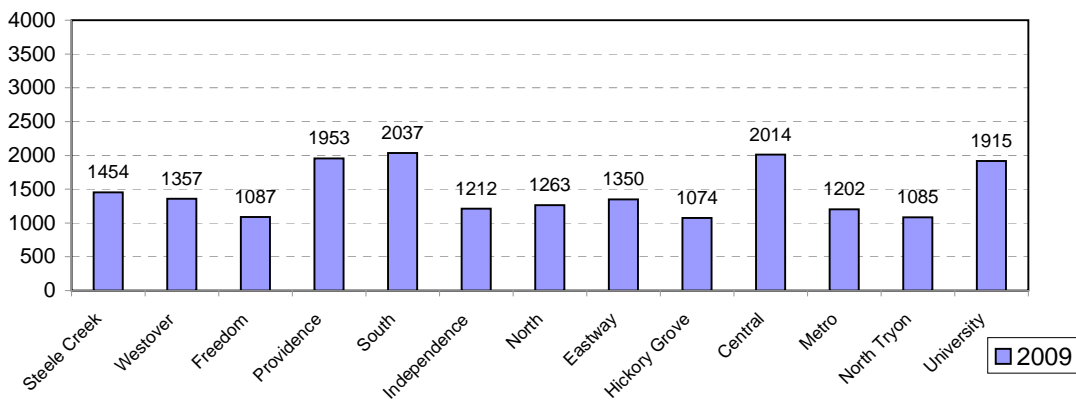
Type	2009
Fatal Collision Reports	34
Vehicle Occupants Killed	25
Pedestrians Killed	11
Personal Injury Collisions	5100
Property Damage Collisions	13869
<b>Total Collision Reports</b>	<b>19003</b>

\* The number of fatal collisions and the number of persons killed in those incidents is taken from the files of the CMPD Highway Interdiction Traffic Safety (HITS) unit; their records are updated for deaths that occur after the initial report is filed.

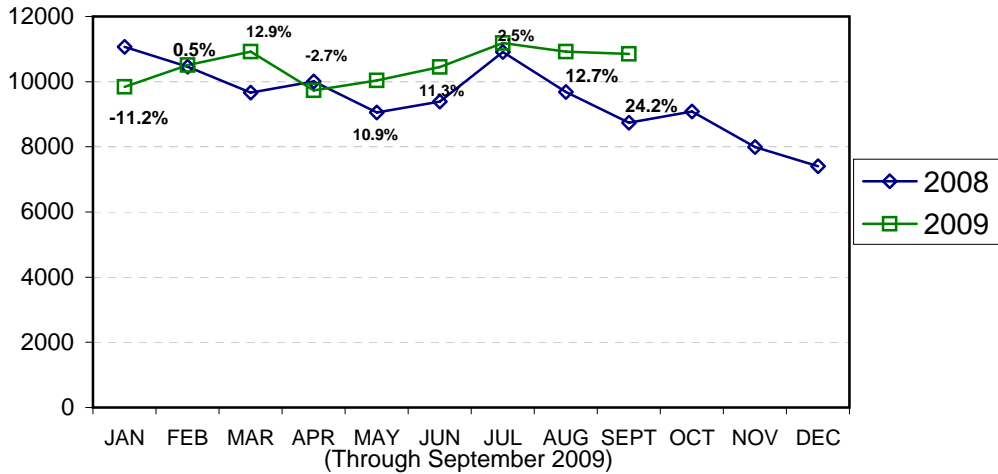
**Traffic Collision Reports by Type  
Charlotte-Mecklenburg Police Department:  
2009 Year-to-Date  
(Through September)**



**Traffic Collision Reports - Charlotte-Mecklenburg Police Dept.  
Year-to-Date By Location (Division) : 2009**

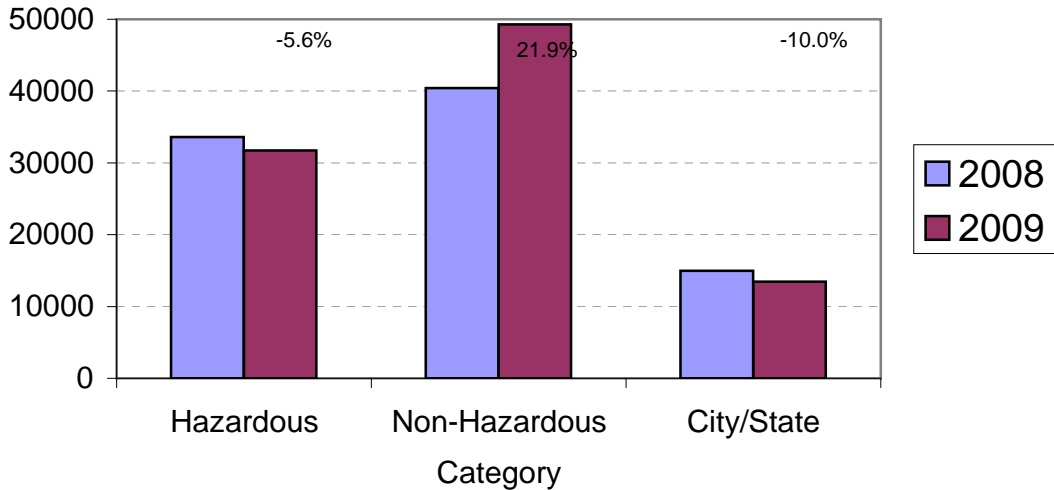


### Total Citation Enforcement by Month Charlotte-Mecklenburg Police Dept.: 2008-2009

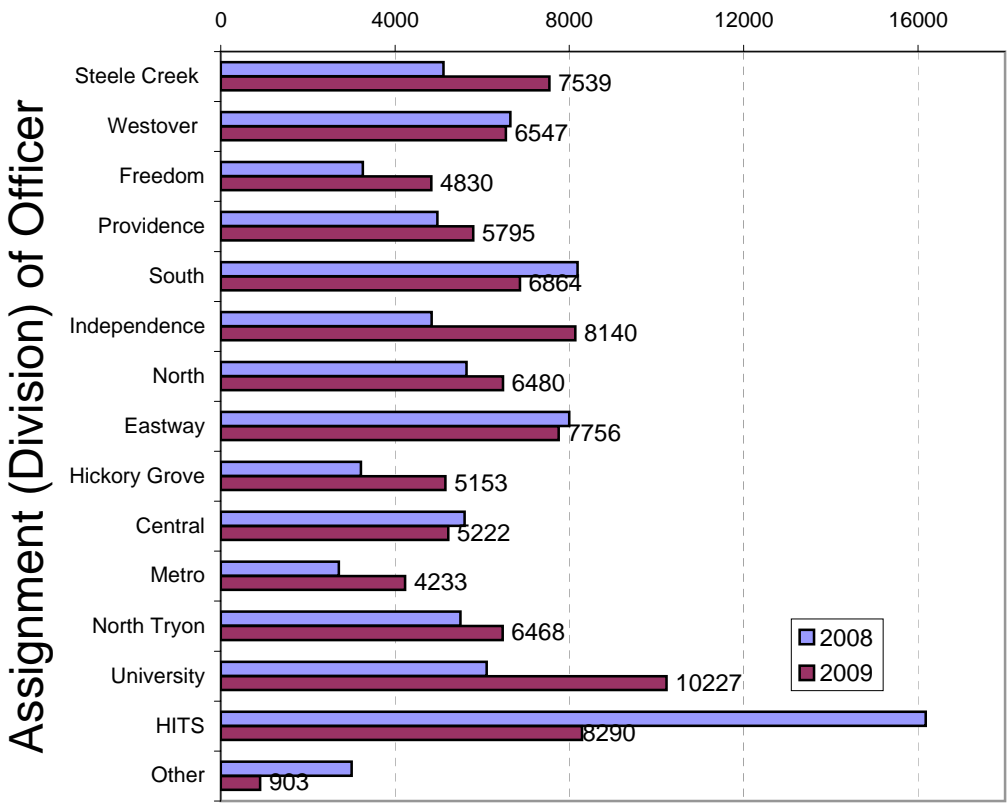


(Includes both traffic and non traffic citations; percentages are current month compared to same month in previous year. Monthly totals may be affected by data entry delays or copies not being routed to the Records Division for talling.)

### CMPD Citation Enforcement by Category Year-to-Date, 2008-2009 (Through September 2009)



**Citations Issued Year-to-Date by CMPD Divisions  
2008-2009  
(Through September 2009)**



Note: Totals are based on the division of the officer as recorded on the citation copies routed to and entered by the Records Division. Year-to-date data may be affected by data entry delays, copies not being routed to the Records Division, errors in data entry, or changes in divisions/reorganizations.

<b>Citations Reported by the Charlotte Mecklenburg Police Year-to-Date (Through September 2009)</b>			
	<u>2008</u>	<u>2009</u>	<u>% Change</u>
Hazardous	33,610	31,717	-5.6%
Non-Hazardous	40,411	49,265	21.9%
Other City/State Statute/Ordinance	14,957	13,465	-10.0%
<b>Total</b>	<b>88,978</b>	<b>94,447</b>	<b>6.1%</b>

**CITIZEN-INITIATED CALLS FOR SERVICE<sup>1</sup> BY TYPE  
CHARLOTTE-MECKLENBURG POLICE DEPARTMENT**

<u>Type of Call<sup>2</sup></u>	<u>2008 Year-to-Date<sup>5</sup> Through September</u>	<u>2009 Year-to-Date<sup>5</sup> Through September</u>	<u>Year-to-Date % Change</u>
ABC RELATED	1740	1498	-13.9%
ACCIDENT	25074	23661	-5.6%
ALARM	30716	28402	-7.5%
ANIMAL CONTROL <sup>3</sup>	330	865	162.1%
ASSAULT	3471	3534	1.8%
ASSAULT WITH DEADLY WEAPON	1954	1742	-10.8%
ASSIST OTHER AGENCY	7141	6882	-3.6%
BOMB THREAT	47	41	-12.8%
BREAK/ENTER	15016	12456	-17.0%
CDCP CLINICIAN VISIT <sup>4</sup>	1298	1189	-8.4%
COMMUNICATING THREATS	2577	2939	14.0%
COUNTY SECURITY <sup>3</sup>	15	12	-20.0%
CRIMINAL INTELLIGENCE	7	6	-14.3%
CRITICAL INCIDENT <sup>4</sup>	19	8	-57.9%
DAMAGE TO PROPERTY	6149	5393	-12.3%
DEATH	152	127	-16.4%
DISTURBANCE	21630	20114	-7.0%
DOMESTIC INCIDENT	25408	27139	6.8%
DRUG RELATED	3163	2887	-8.7%
EXTORTION/BLACKMAIL <sup>4</sup>	9	9	0.0%
FIGHT	2441	2293	-6.1%
FIRE CASE	61	42	-31.1%
FRAUD/FORGERY	3305	3635	10.0%
GAMBLING	15	24	60.0%
HARASSMENT	1535	1934	26.0%
HIT AND RUN	5543	5082	-8.3%
JUVENILE RELATED	1649	1688	2.4%
KIDNAPPING	132	120	-9.1%
LAKE ENFORCEMENT	78	64	-17.9%
LARCENY	25429	22384	-12.0%
LOITERING	4745	5174	9.0%
MISSING PERSON	4622	4421	-4.3%
NOISE COMPLAINT	11259	11063	-1.7%
OFFENSE AGAINST FAMILY	2	2	0.0%
OFFICER CALLED IN	1	11	1000.0%
OVERDOSE	345	359	4.1%
PORNOGRAPHY	8	5	-37.5%
PROPERTY	4705	3602	-23.4%
PROSTITUTION	675	0	-100.0%
PUBLIC SERVICE	12370	13341	7.8%
QUALITY OF LIFE	505	558	10.5%
ROBBERY	2340	1819	-22.3%
SEX CRIME	929	885	-4.7%
SPECIAL SERVICE REQUEST <sup>4</sup>	5	3	-40.0%
SUICIDE	2797	1277	-54.3%
SUSPICIOUS PERSON	14781	13873	-6.1%
TRAFFIC RELATED	10596	8689	-18.0%
TRESPASS	3257	3235	-0.7%
VEHICLE RELATED	26103	22274	-14.7%
VIOLENT CRIMES TASK FORCE <sup>4</sup>	1	0	NA
WARRANT RELATED	2202	2204	0.1%
WEAPON RELATED	6237	4409	-29.3%
ZONE CHECK-ADVISED EVENT <sup>4</sup>	16	18	12.5%
911 HANG UP / CALLBACK	8885	8750	-1.5%
<b>TOTAL</b>	<b>303490</b>	<b>282142</b>	<b>-7.0%</b>

<sup>1</sup>These totals exclude duplicate and cancelled calls for service; they include calls handled by the Crime Reporting Unit as well as by division field officers, detectives and related CMPD staff.

<sup>2</sup>The type of call is determined from the 911 call, unless updated by an officer assigned to respond.

<sup>3</sup>In this summary, calls to Animal Control, Mecklenburg County Security, or Davidson Police are not included unless they also involve the dispatching of C-MPD field officers or detectives.

<sup>4</sup>This call type may not have been in use during part or all of the previous year or current year.



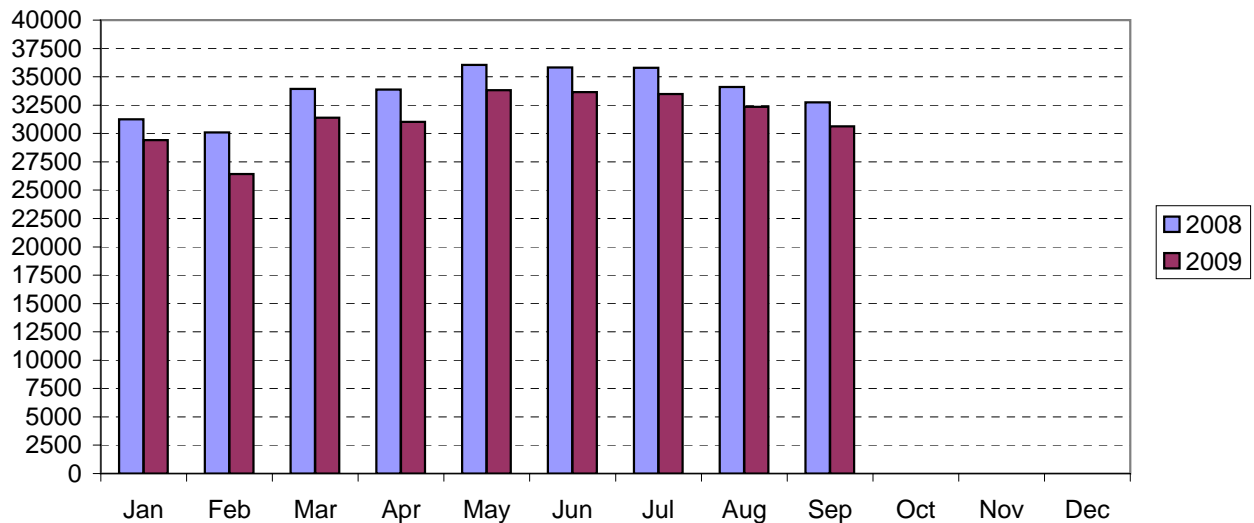
**CITIZEN-INITIATED CALLS FOR SERVICE BY ORIGINATING CMPD DIVISION<sup>1,2</sup>**  
 (Based on District of Call Origination, Not on Assigned District of Responding Units)

<u>District</u>	<u>2008 Year-to-Date Through September</u>	<u>2009 Year-to-Date Through September</u>	<u>Year-to-Date % Change</u>
Central-01	17681	17101	-3.3%
Metro-02	26900	25247	-6.1%
Eastway-06	24038	21781	-9.4%
North Tryon-07	22484	20388	-9.3%
North-11 (C1)	25252	24159	-4.3%
Hickory Grove-12	18535	17830	-3.8%
University-14	25723	23892	-7.1%
Providence-16	24632	22696	-7.9%
Independence-17	21678	20878	-3.7%
Steele Creek-21	24778	22716	-8.3%
South-22	22534	21536	-4.4%
Westover-26	23888	21631	-9.4%
Freedom-27	23422	21745	-7.2%
<b>Total<sup>2</sup></b>	<b>301545</b>	<b>281600</b>	<b>-6.6%</b>

<sup>1</sup>These totals exclude duplicate and cancelled calls for service; they include calls handled by the Crime Reporting Unit as well as by division field officers, detectives and other CMPD staff.

<sup>2</sup>Calls where the location could not be assigned to one of the divisions are not included in this chart.

**Citizen-Initiated Calls for Service<sup>1</sup> by Month**  
**Charlotte-Mecklenburg Police Department: 2008-2009**



<sup>1</sup>These totals exclude duplicate and cancelled calls for service; they include calls handled by the Crime Reporting Unit as well as by division field officers, detectives and other CMPD staff.

## Uniform Crime Reporting Procedures

The Charlotte-Mecklenburg Police Department reports offense and arrest statistics in accordance with standard Uniform Crime Reporting (UCR) guidelines. UCR policy states that any adjustments to previous months can be made on the current month's report:

... Law enforcement investigation in the current month may show that actual offenses the agency recorded on a previous month's report require adjustment; that is, an offense might be (1) unfounded, (2) reclassified, or (3) subtracted from previous totals. It may be necessary for the agency to adjust the totals reported to the UCR Program for the past month or prior months. Agencies can make needed adjustments on the current month's report; these do not affect the reliability of the figures because such adjustments tend to offset one another from month to month over a period of time.

- *Uniform Crime Reporting Handbook*, FBI, 2004, p. 82

We are required to report crime monthly to the UCR program, and we do therefore make an effort to process monthly changes in a timely manner. However, occasionally due to the review and processing required for reclassifying, unfounding or clearing cases, the current month's totals may reflect the processing of a backlog of these changes from previous months.

Users of the data are cautioned that conclusions about substantial changes in crime trends or in clearance rates based on only a single month's data or trend may reflect some of these adjustments. For this reason, in addition to the monthly and year-to-date trends on Page 1, the monthly report routinely includes a comparison for the previous 12 months, as well as graphs that provide seasonal/monthly comparisons over a five-year period.

### UCR Definitions and Terms:

**Index Crime:** the eight offenses that the national UCR program tracks on a yearly basis to gauge trends in the extent of crime, despite differences among state and local criminal statutes. These offenses were selected on the basis of several factors: seriousness, frequency of occurrence, pervasiveness in all geographic areas, and/or likelihood of being reported to law enforcement.

**Violent Index:** includes the offenses of murder/non-negligent manslaughter, rape, robbery, and aggravated assault

**Property Index:** includes the offenses of burglary, larceny, vehicle theft and arson

**Murder/non-negligent manslaughter:** the willful killing of one human being by another (UCR counts each victim.)

**Justifiable Homicide:** limited by UCR to either a killing by a law enforcement officer in the line of duty or a killing by a citizen of a felon during the commission of a felony. If a homicide is determined to be "justifiable" by this definition, it is subtracted from the murder/non-negligent manslaughter category after investigation.

**Rape:** the carnal knowledge of a female forcibly and against her will (UCR counts each victim. Note: This offense does not include other sex offenses or statutory [non-forcible] rape.)

**Robbery:** the taking or attempt to take anything of value from the care, custody, or control of a person or persons by force, threat of force or violence, or by putting the victim in fear. (UCR counts 1 robbery per incident, regardless of the number of victims robbed in the case.)

**Aggravated assault:** an unlawful attack by one person on another for the purpose of inflicting severe or aggravated bodily injury; includes 1) all assaults in which a weapon of any type is used or is threatened to be used and/or 2) all assaults where serious injury occurs (UCR counts one aggravated assault for each victim of assault.)

Burglary: the unlawful entry or attempted entry of a structure to commit a felony or a theft (UCR counts 1 burglary per premise/"distinct operation." Note: Each break-in of a distinct "business" office, individual rental storage unit, or similar premise in a multi-unit building is considered a "distinct operation".)

Larceny-Theft: the unlawful taking (or attempt), carrying, leading, or riding away of property from the possession or constructive possession of another (UCR counts 1 offense per total incident. Note: Larceny/theft of a motor vehicle is classed separately.)

Vehicle Theft: the theft or attempted theft of a motor vehicle (UCR counts each vehicle that is a self-propelled vehicle that runs on land and not on rails, excluding farm and construction equipment)

Arson: the willful or malicious burning or attempt to burn, with or without intent to defraud, a structure, motor vehicle, personal property of another, etc. (UCR counts 1 per incident.)

Hierarchy rule: For cases involving multiple-offenses, the incident is classified and counted based on the highest offense on a hierarchy of crimes established by UCR. For example, for an incident involving a rape and a burglary, the incident would be counted in the rape category because rape is higher than burglary on the hierarchy.

Clearance: A case is considered cleared when either 1) at least one arrest is made for the offense or 2) when the offender's identity is established by investigation but the offender will not be arrested for reasons outside law enforcement control (offender dies, victim refuses to prosecute, district attorney declines prosecution, extradition is refused, etc.).

Unfounding: A case is "unfounded" and subtracted from the crime counts when investigation establishes that the incident did not actually occur or that the actions within the incident are not criminal based on current law, or that the incident report duplicates another report of the same crime.

For additional information, please consult the *UCR Handbook* on the FBI website at <http://www.fbi.gov/ucr/ucr.htm>.

This report was compiled by the Crime Analysis Division.

We make an effort to present the most accurate information available at the time this report is published. Please notify the Crime Analysis office if you have any questions about the data in this report or about an error that was missed in proofing the report.

Officer Ed Williams