



**CHARLOTTE-MECKLENBURG POLICE DEPARTMENT
MONTHLY SUMMARY REPORT
OCTOBER, 2008**

**Rodney Monroe
Chief of Police**

INDEX OFFENSES REPORTED TO CHARLOTTE-MECKLENBURG POLICE DEPARTMENT

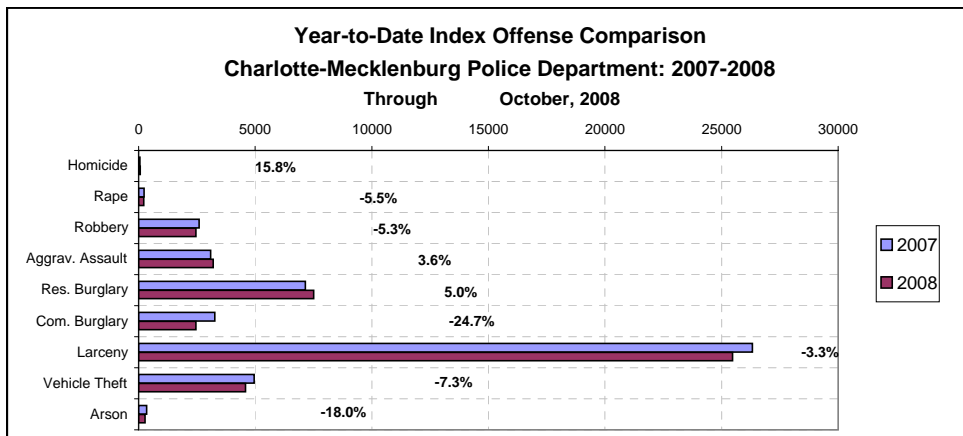
October, 2008 INDEX OFFENSES	# THIS MONTH	# THIS INDEX	# LAST MONTH	MONTHLY % CHANGE	SAME MONTH LAST YEAR	MONTHLY % CHANGE	THIS YEAR TO DATE	LAST YEAR TO DATE	ANNUAL % CHANGE
HOMICIDE (MURDER & NON- NEGLIGENT MANSLAUGHTER)*	5	0.1%	7	-28.6%	5	0.0%	66	57	15.8%
RAPE TOTAL	21	0.5%	17	23.5%	21	0.0%	223	236	-5.5%
ACTUAL	18	0.4%	17	5.9%	21	-14.3%	204	225	-9.3%
ATTEMPT	3	0.1%	0	NA	0	NA	19	11	72.7%
ROBBERY TOTAL	272	6.4%	262	3.8%	306	-11.1%	2456	2594	-5.3%
ARMED	236	5.6%	215	9.8%	252	-6.3%	2029	2162	-6.2%
STRONG-ARM	36	0.8%	47	-23.4%	54	-33.3%	427	432	-1.2%
AGGRAVATED ASSAULT TOTAL	320	7.5%	272	17.6%	302	6.0%	3193	3081	3.6%
BURGLARY TOTAL	958	22.6%	1012	-5.3%	1212	-21.0%	9972	10421	-4.3%
RESIDENTIAL	732	17.3%	779	-6.0%	981	-25.4%	7512	7154	5.0%
COMMERCIAL	226	5.3%	233	-3.0%	231	-2.2%	2460	3267	-24.7%

FORCE	787	18.6%	831	-5.3%	961	-18.1%	8051	8316	-3.2%
NO FORCE	111	2.6%	98	13.3%	163	-31.9%	1138	1368	-16.8%
ATTEMPT	60	1.4%	83	-27.7%	88	-31.8%	783	737	6.2%
LARCENY TOTAL	2234	52.7%	2074	7.7%	2862	-21.9%	25472	26328	-3.3%
\$200 AND OVER	1121	26.4%	1041	7.7%	1497	-25.1%	13257	13764	-3.7%
\$50 TO \$200	429	10.1%	346	24.0%	468	-8.3%	4460	4595	-2.9%
UNDER \$50	684	16.1%	687	-0.4%	897	-23.7%	7755	7969	-2.7%

FROM AUTO	1046	24.7%	986	6.1%	1780	-41.2%	14012	14792	-5.3%
BICYCLE	22	0.5%	18	22.2%	22	0.0%	217	236	-8.1%
SHOPLIFTING	313	7.4%	233	34.3%	253	23.7%	2629	2289	14.9%
OTHERS	853	20.1%	837	1.9%	807	5.7%	8614	9011	-4.4%
VEHICLE THEFT TOTAL	411	9.7%	409	0.5%	514	-20.0%	4588	4951	-7.3%
ARSON TOTAL	20	0.5%	32	-37.5%	28	-28.6%	277	338	-18.0%
TOTALS	4241	100.0%	4085	3.8%	5250	-19.2%	46247	48006	-3.7%
VIOLENT PROPERTY	618 3623	14.6% 85.4%	558 3527	10.8% 2.7%	634 4616	-2.5% -21.5%	5938 40309	5968 42038	-0.5% -4.1%

NOTE: These totals include offenses reported to the Charlotte-Mecklenburg Police Department in accordance with the Uniform Crime Reporting (UCR) Program. Because the data in this report is primarily based on the automated Records Management System, cases counted this month may include offenses from previous months/years that were reclassified after investigation.

*Year-to-date Homicide totals for 2008 reflect the reclassification of one case from 2007 to Justifiable Homicide in April, as well as 5 cases in 2008 that were reclassified and subtracted as Justifiable Homicide based on Summary UCR rules (See the glossary at the end of this report for the UCR definition of justifiable homicide).

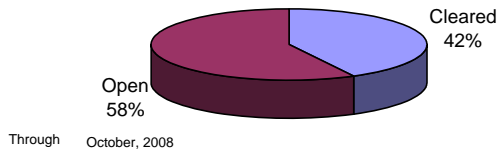


INDEX CLEARANCES REPORTED BY THE CHARLOTTE-MECKLENBURG POLICE DEPARTMENT

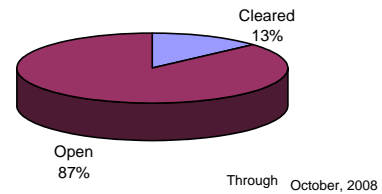
October, 2008 INDEX CLEARANCES	THIS MONTH		THIS MONTH LAST MONTH:		SAME MO. LAST YR:		THIS YEAR TO DATE:		LAST YEAR TO DATE:	
	NO.	%	NO.	%	NO.	%	NO.	%	NO.	%
MURDER & NON-NEGLIGENT MANSLAUGHTER ¹	7	140.0%	7	100.0%	6	120.0%	42	63.6%	38	66.7%
RAPE TOTAL	19	90.5%	18	105.9%	19	90.5%	171	76.7%	168	71.2%
ACTUAL	19	105.6%	18	105.9%	17	81.0%	156	76.5%	156	69.3%
ATTEMPT	0	0.0%	0	NA	2	NA	15	78.9%	12	109.1%
ROBBERY TOTAL	52	19.1%	65	24.8%	78	25.5%	673	27.4%	655	25.3%
ARMED	45	19.1%	52	24.2%	66	26.2%	562	27.7%	545	25.2%
STRONG-ARM	7	19.4%	13	27.7%	12	22.2%	146	34.2%	110	25.5%
AGGRAVATED ASSAULT TOTAL	151	47.2%	157	57.7%	192	63.6%	1617	50.6%	1478	48.0%
BURGLARY TOTAL	142	14.8%	144	14.2%	93	7.7%	958	9.6%	1015	9.7%
RESIDENTIAL	115	15.7%	92	11.8%	62	6.3%	710	9.5%	649	9.1%
COMMERCIAL	27	11.9%	52	22.3%	31	13.4%	248	10.1%	366	11.2%
LARCENY TOTAL	433	19.4%	400	19.3%	367	12.8%	3772	14.8%	3021	11.5%
FROM AUTO	75	7.2%	88	8.9%	36	2.0%	481	3.4%	363	2.5%
BICYCLE	0	0.0%	3	16.7%	2	9.1%	17	7.8%	11	4.7%
SHOPLIFTING	192	61.3%	157	67.4%	171	67.6%	1846	70.2%	1370	59.9%
OTHERS	166	19.5%	152	18.2%	158	19.6%	1428	16.6%	1277	14.2%
VEHICLE THEFT TOTAL	56	13.6%	47	11.5%	54	10.5%	547	11.9%	561	11.3%
ARSON TOTAL	4	20.0%	6	18.8%	10	35.7%	48	17.3%	52	15.4%
TOTALS	864	20.4%	844	20.7%	819	15.6%	7828	16.9%	6988	14.6%
VIOLENT PROPERTY	229	37.1%	247	44.3%	295	46.5%	2503	42.2%	2339	39.2%
	635	17.5%	597	16.9%	524	11.4%	5325	13.2%	4649	11.1%

¹NOTE : Clearances are reported in accordance with Uniform Crime Report guidelines. Since clearances are not counted for UCR until they are entered in the Records Management system, any delays in entry of the documentation may result in some clearances being reported later in succeeding months.

**Year-to-Date Violent Index Clearance Rate
Charlotte-Mecklenburg Police Department: 2008**

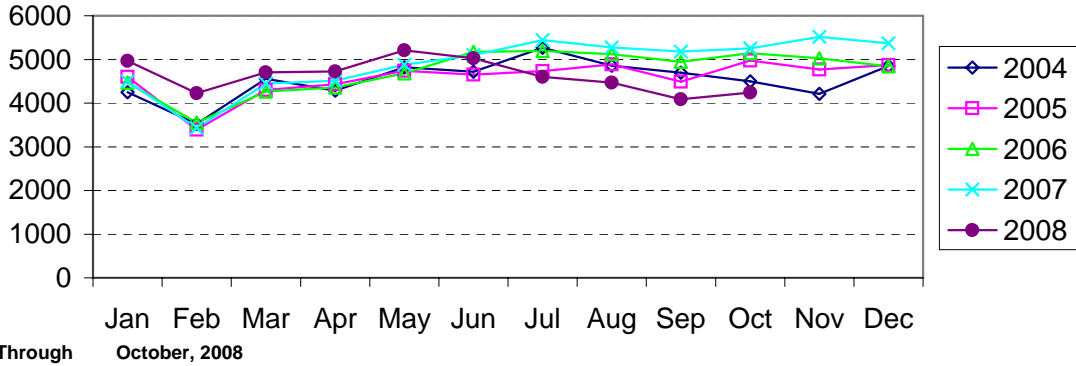


**Year-to-Date Property Index Clearance Rate
Charlotte-Mecklenburg Police Department: 2008**

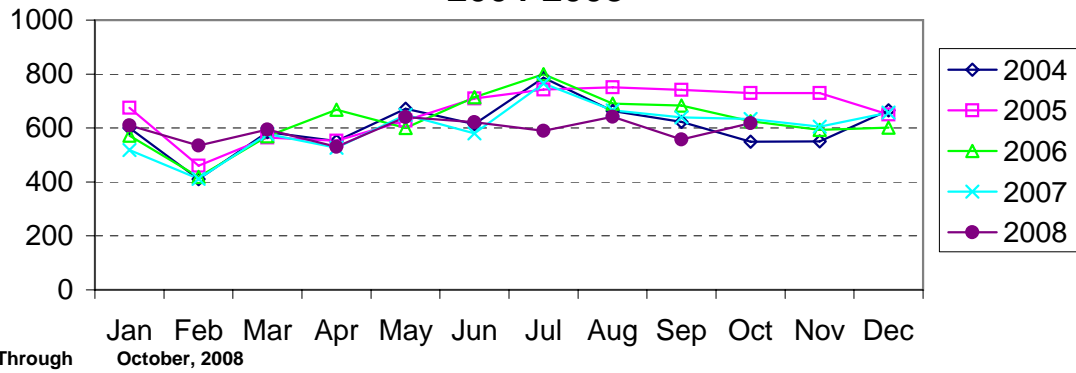


Clearance rates for crime reporting are calculated by dividing the number of crimes cleared during a designated time span by the number of crimes reported in the same period and converting the result to a percentage (multiplying by 100). Since cases from previous reporting periods can be cleared during the designated time span, the rate may be higher than 100%.

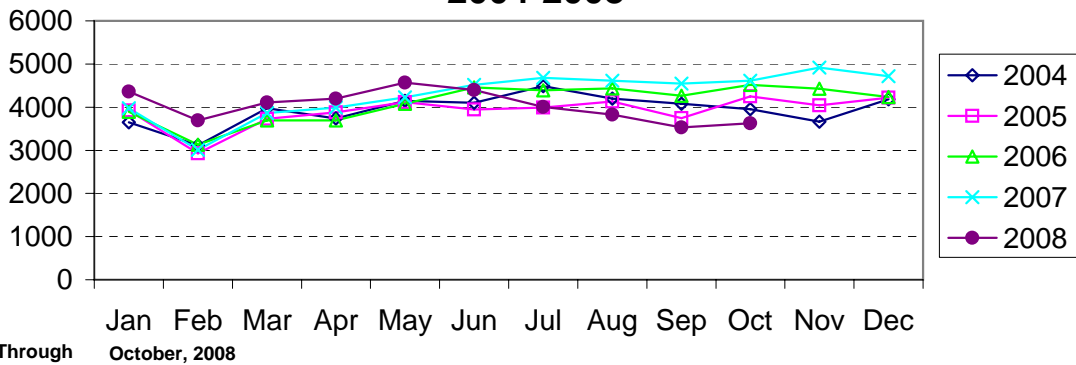
Index Offenses Reported by Month Charlotte-Mecklenburg Police Department: 2004-2008



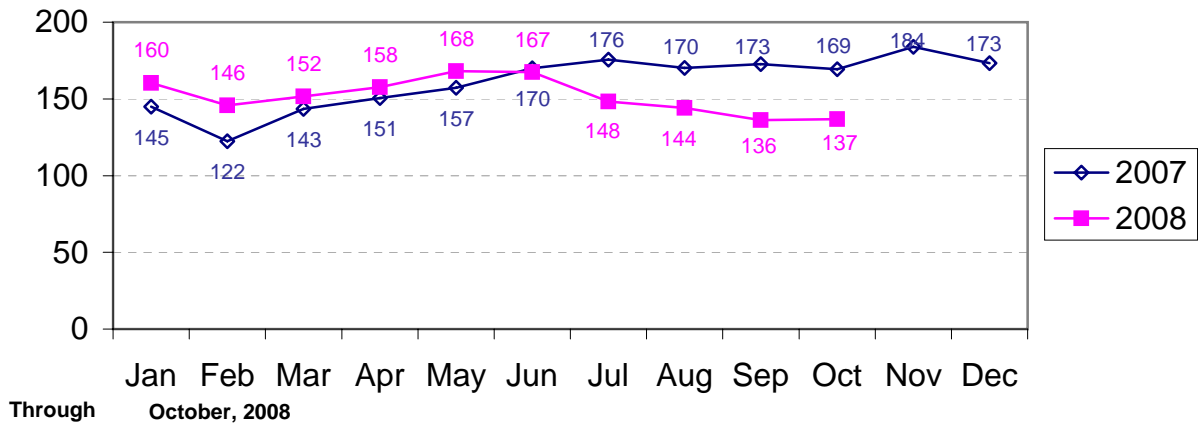
Violent Index Offenses Reported by Month Charlotte-Mecklenburg Police Department: 2004-2008



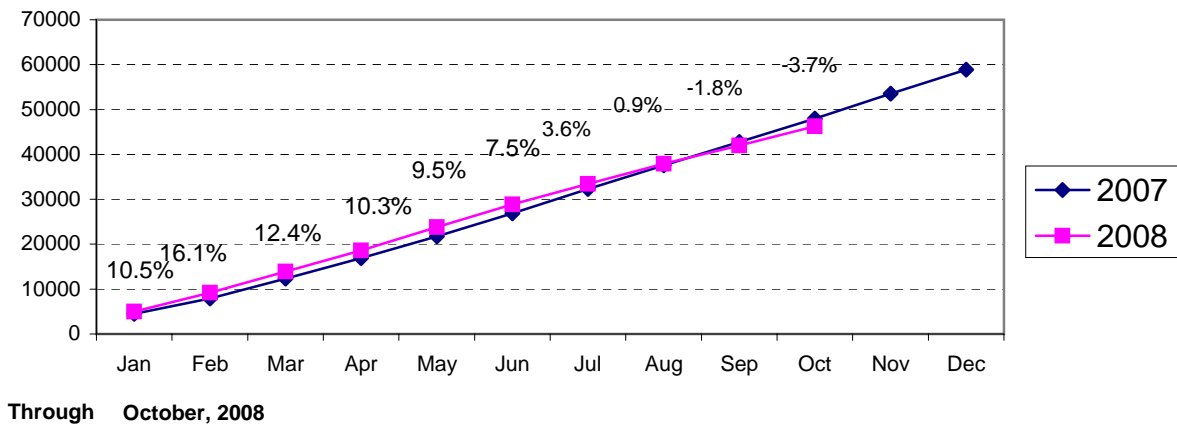
Property Index Offenses Reported by Month Charlotte-Mecklenburg Police Department: 2004-2008



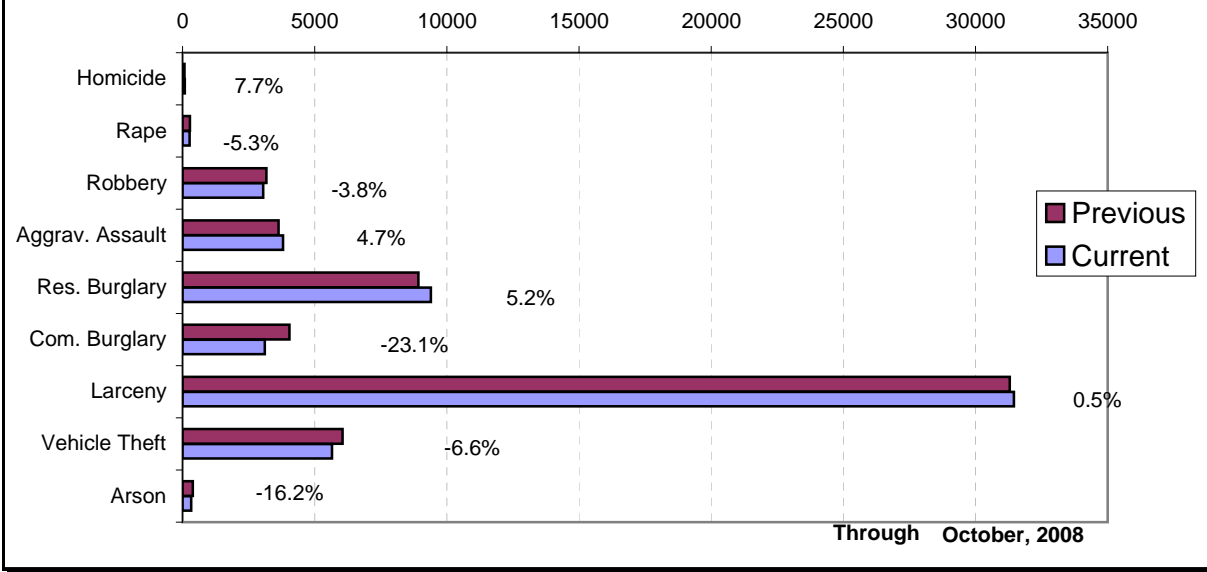
Index Offense Per Day Average by Month Charlotte-Mecklenburg Police Department: 2007-2008



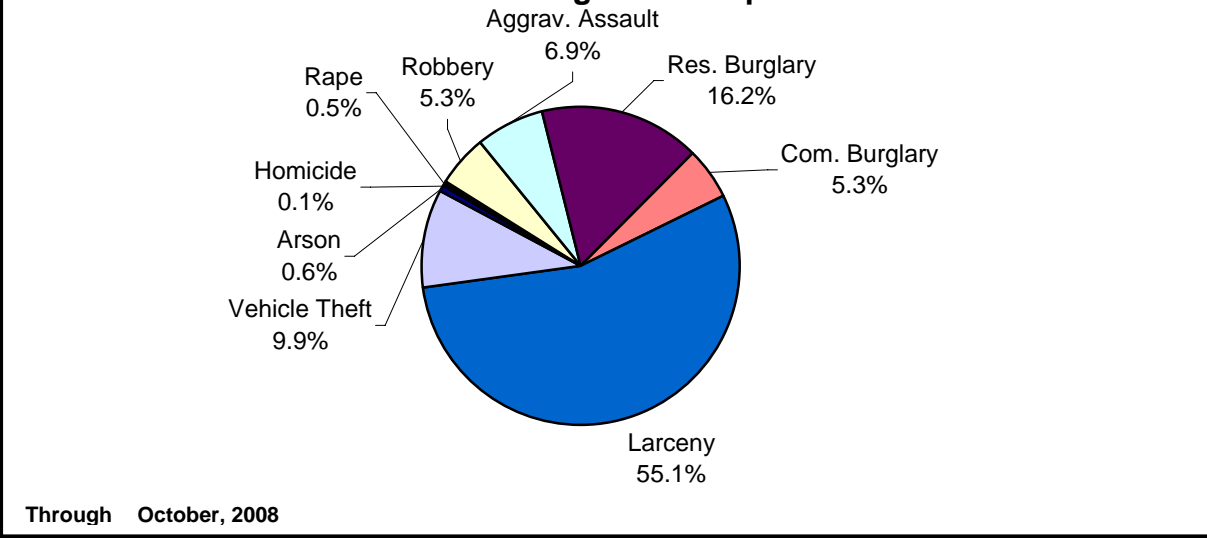
Index Offenses Year-to-Date Cumulative Totals Charlotte-Mecklenburg Police Department: 2007-2008



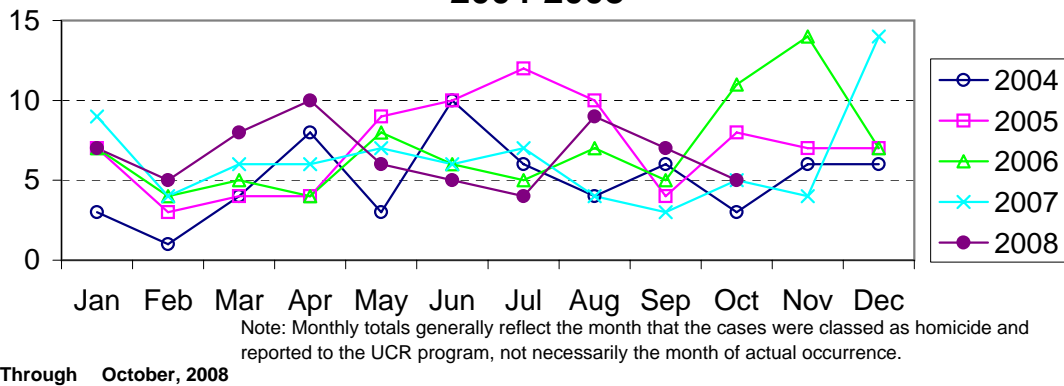
Index Offenses in Current & Previous 12 Month Periods Charlotte-Mecklenburg Police Department



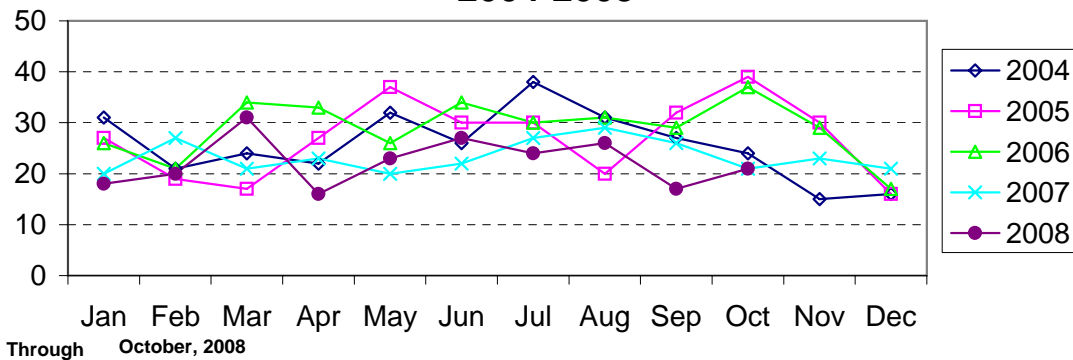
Year-to-Date Index Offenses by Type Charlotte-Mecklenburg Police Department: 2008



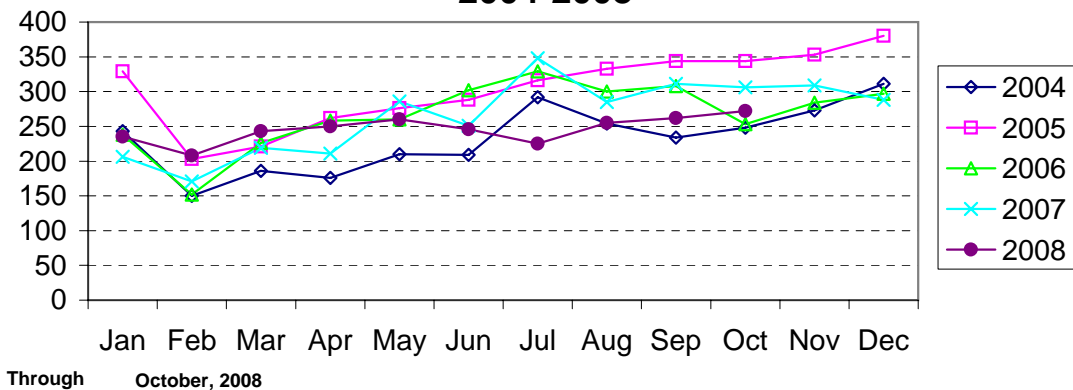
Homicide Reported by Month Charlotte-Mecklenburg Police Department: 2004-2008



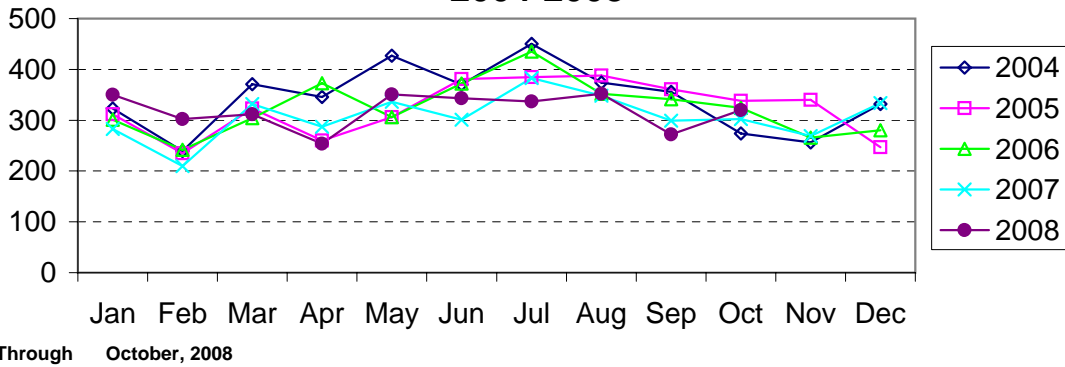
Rape Reported by Month Charlotte-Mecklenburg Police Department: 2004-2008



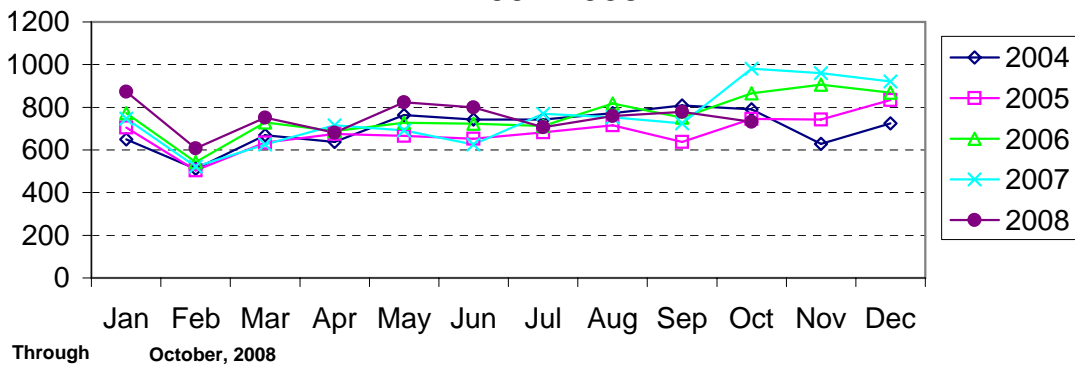
Robbery Reported by Month Charlotte-Mecklenburg Police Department: 2004-2008



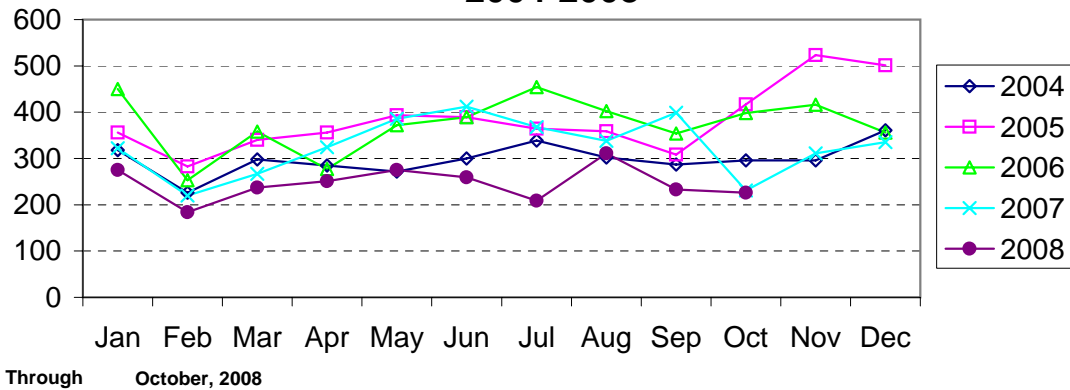
**Aggravated Assault Reported by Month
Charlotte-Mecklenburg Police Department:
2004-2008**



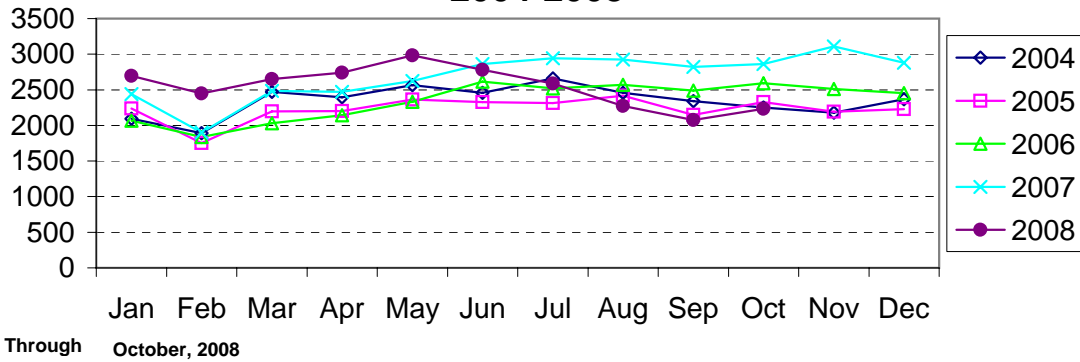
**Residential Burglary Reported by Month
Charlotte-Mecklenburg Police Department:
2004-2008**



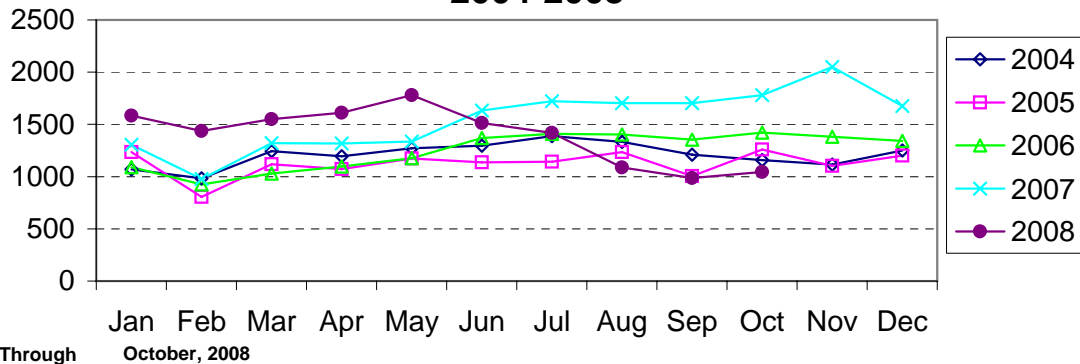
**Commercial Burglary Reported by Month
Charlotte-Mecklenburg Police Department:
2004-2008**



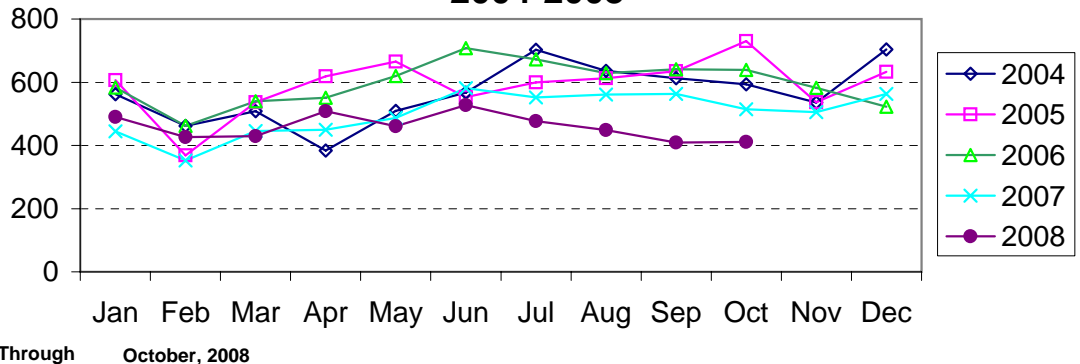
Larceny Reported by Month Charlotte-Mecklenburg Police Department: 2004-2008



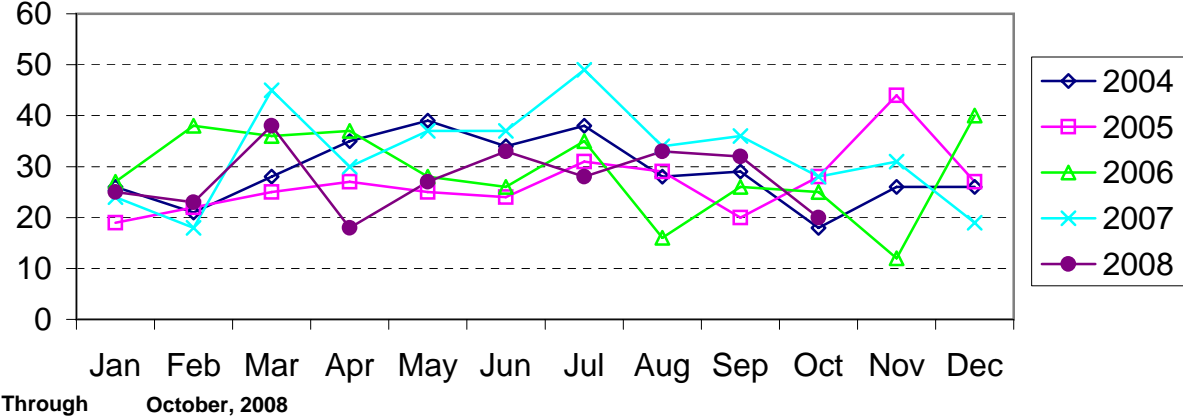
Larceny from Vehicle Reported by Month Charlotte-Mecklenburg Police Department: 2004-2008



Vehicle Theft Reported by Month Charlotte-Mecklenburg Police Department: 2004-2008



Arson Reported by Month Charlotte-Mecklenburg Police Department: 2004-2008



East Service Area: Index Offenses Reported By Division, October, 2008

Eastway Division (06)								
	<u>Current month</u>	<u>Previous Month</u>	<u>Percent Change</u>	<u>Same Month Last Year</u>	<u>Percent Change</u>	<u>Current Year-to-Date</u>	<u>Past Year-to-Date</u>	<u>Percent Change</u>
MURDER & NON-NEGLIGENT MANSLAUGHTER	1	1	0.0%	0	NA	7	6	16.7%
RAPE	3	2	50.0%	0	NA	21	14	50.0%
ROBBERY	23	28	-17.9%	26	-11.5%	255	315	-19.0%
ARMED	21	20	5.0%	22	-4.5%	218	262	-16.8%
STRONG-ARM	2	8	-75.0%	4	-50.0%	37	53	-30.2%
AGGRAVATED ASSAULT	38	21	81.0%	39	-2.6%	316	242	30.6%
BURGLARY	88	76	15.8%	82	7.3%	843	752	12.1%
RESIDENTIAL	67	67	0.0%	69	-2.9%	660	562	17.4%
COMMERCIAL	21	9	133.3%	13	61.5%	183	190	-3.7%
LARCENY	164	156	5.1%	226	-27.4%	1957	1912	2.4%
FROM AUTO	68	67	1.5%	108	-37.0%	983	917	7.2%
BICYCLE	2	0	NA	5		27	31	-12.9%
SHOPLIFTING	34	30	13.3%	43	-20.9%	360	270	33.3%
OTHERS	60	59	1.7%	70	-14.3%	587	694	-15.4%
VEHICLE THEFT	31	31	0.0%	39	-20.5%	415	397	4.5%
ARSON	1	2	-50.0%	2	-50.0%	24	19	26.3%
TOTALS	349	317	10.1%	414	-15.7%	3838	3657	4.9%
VIOLENT PROPERTY	65 284	52 265	25.0% 7.2%	65 349	0.0% -18.6%	599 3239	577 3080	3.8% 5.2%

North Tryon Division (07)								
	<u>Current month</u>	<u>Previous Month</u>	<u>Percent Change</u>	<u>Same Month Last Year</u>	<u>Percent Change</u>	<u>Current Year-to-Date</u>	<u>Past Year-to-Date</u>	<u>Percent Change</u>
MURDER & NON-NEGLIGENT MANSLAUGHTER	0	0	NA	1	-100.0%	6	8	-25.0%
RAPE	2	0	NA	2	0.0%	21	17	23.5%
ROBBERY	35	33	6.1%	52	-32.7%	311	357	-12.9%
ARMED	34	29	17.2%	45	-24.4%	274	311	-11.9%
STRONG-ARM	1	4	-75.0%	7	-85.7%	37	46	-19.6%
AGGRAVATED ASSAULT	27	25	8.0%	18	50.0%	279	328	-14.9%
BURGLARY	80	106	-24.5%	94	-14.9%	796	905	-12.0%
RESIDENTIAL	61	83	-26.5%	59	3.4%	554	566	-2.1%
COMMERCIAL	19	23	-17.4%	35	-45.7%	242	339	-28.6%
LARCENY	119	119	0.0%	130	-8.5%	1316	1469	-10.4%
FROM AUTO	57	56	1.8%	64	-10.9%	678	805	-15.8%
BICYCLE	1	0	NA	0		8	11	-27.3%
SHOPLIFTING	9	15	-40.0%	18	-50.0%	90	92	-2.2%
OTHERS	52	48	8.3%	48	8.3%	540	561	-3.7%
VEHICLE THEFT	32	39	-17.9%	47	-31.9%	424	597	-29.0%
ARSON	1	2	-50.0%	1	0.0%	18	29	-37.9%
TOTALS	296	324	-8.6%	345	-14.2%	3171	3710	-14.5%
VIOLENT PROPERTY	64 232	58 266	10.3% -12.8%	73 272	-12.3% -14.7%	617 2554	710 3000	-13.1% -14.9%

North Service Area:**October, 2008**

North Division (11)								
	<u>Current month</u>	<u>Previous Month</u>	<u>Percent Change</u>	<u>Same Month Last Year</u>	<u>Percent Change</u>	<u>Current Year-to-Date</u>	<u>Past Year-to-Date</u>	<u>Percent Change</u>
MURDER & NON-NEGLIGENT MANSLAUGHTER	1	1	0.0%	0	NA	9	2	350.0%
RAPE	2	0	NA	1	100.0%	12	16	-25.0%
ROBBERY	13	20	-35.0%	24	-45.8%	121	126	-4.0%
ARMED	13	18	-27.8%	23	-43.5%	108	116	-6.9%
STRONG-ARM	0	2	-100.0%	1	-100.0%	13	10	30.0%
AGGRAVATED ASSAULT	13	7	85.7%	24	-45.8%	232	282	-17.7%
BURGLARY	108	94	14.9%	217	-50.2%	1260	1379	-8.6%
RESIDENTIAL	94	83	13.3%	183	-48.6%	1015	1120	-9.4%
COMMERCIAL	14	11	27.3%	34	-58.8%	245	259	-5.4%
LARCENY	177	196	-9.7%	249	-28.9%	2079	2324	-10.5%
FROM AUTO	74	98	-24.5%	147	-49.7%	1036	1264	-18.0%
BICYCLE	2	0	NA	0		12	18	-33.3%
SHOPLIFTING	43	34	26.5%	38	13.2%	352	242	45.5%
OTHERS	58	64	-9.4%	64	-9.4%	679	800	-15.1%
VEHICLE THEFT	27	25	8.0%	41	-34.1%	329	375	-12.3%
ARSON	2	4	-50.0%	4	-50.0%	30	37	-18.9%
TOTALS	343	347	-1.2%	560	-38.8%	4072	4541	-10.3%
VIOLENT PROPERTY	29 314	28 319	3.6% -1.6%	49 511	-40.8% -38.6%	374 3698	426 4115	-12.2% -10.1%

University City Division (14)								
	<u>Current month</u>	<u>Previous Month</u>	<u>Percent Change</u>	<u>Same Month Last Year</u>	<u>Percent Change</u>	<u>Current Year-to-Date</u>	<u>Past Year-to-Date</u>	<u>Percent Change</u>
MURDER & NON-NEGLIGENT MANSLAUGHTER	0	0	NA	0	NA	3	2	50.0%
RAPE	1	1	0.0%	3	-66.7%	13	17	-23.5%
ROBBERY	14	10	40.0%	25	-44.0%	165	140	17.9%
ARMED	12	10	20.0%	19	-36.8%	140	116	20.7%
STRONG-ARM	2	0	NA	6	-66.7%	25	24	4.2%
AGGRAVATED ASSAULT	10	5	100.0%	15	-33.3%	129	113	14.2%
BURGLARY	80	66	21.2%	114	-29.8%	831	812	2.3%
RESIDENTIAL	59	51	15.7%	94	-37.2%	659	617	6.8%
COMMERCIAL	21	15	40.0%	20	5.0%	172	195	-11.8%
LARCENY	201	191	5.2%	349	-42.4%	2720	2706	0.5%
FROM AUTO	91	98	-7.1%	241	-62.2%	1688	1702	-0.8%
BICYCLE	4	0	NA	0		14	13	7.7%
SHOPLIFTING	40	20	100.0%	29	37.9%	292	256	14.1%
OTHERS	66	73	-9.6%	79	-16.5%	726	735	-1.2%
VEHICLE THEFT	31	26	19.2%	60	-48.3%	367	412	-10.9%
ARSON	0	2	-100.0%	2	-100.0%	23	21	9.5%
TOTALS	337	301	12.0%	568	-40.7%	4251	4223	0.7%
VIOLENT PROPERTY	25 312	16 285	56.3% 9.5%	43 525	-41.9% -40.6%	310 3941	272 3951	14.0% -0.3%

Southeast Service Area

October, 2008

Hickory Grove Division (12)								
	<u>Current month</u>	<u>Previous Month</u>	<u>Percent Change</u>	<u>Same Month Last Year</u>	<u>Percent Change</u>	<u>Current Year-to-Date</u>	<u>Past Year-to-Date</u>	<u>Percent Change</u>
MURDER & NON-NEGLIGENT MANSLAUGHTER	1	0	NA	0	NA	5	0	NA
RAPE	1	3	-66.7%	1	0.0%	15	18	-16.7%
ROBBERY	32	13	146.2%	26	23.1%	166	186	-10.8%
ARMED	31	11	181.8%	22	40.9%	146	155	-5.8%
STRONG-ARM	1	2	-50.0%	4	-75.0%	20	31	-35.5%
AGGRAVATED ASSAULT	16	18	-11.1%	25	-36.0%	157	184	-14.7%
BURGLARY	88	98	-10.2%	78	12.8%	746	653	14.2%
RESIDENTIAL	72	76	-5.3%	75	-4.0%	616	538	14.5%
COMMERCIAL	16	22	-27.3%	3	433.3%	130	115	13.0%
LARCENY	141	133	6.0%	118	19.5%	1321	1249	5.8%
FROM AUTO	66	71	-7.0%	58	13.8%	670	641	4.5%
BICYCLE	1	0	NA	2		16	18	-11.1%
SHOPLIFTING	16	10	60.0%	14	14.3%	118	100	18.0%
OTHERS	58	52	11.5%	44	31.8%	517	490	5.5%
VEHICLE THEFT	36	34	5.9%	26	38.5%	401	351	14.2%
ARSON	5	3	66.7%	1	400.0%	25	24	4.2%
TOTALS	320	302	6.0%	275	16.4%	2836	2665	6.4%
VIOLENT PROPERTY	50 270	34 268	47.1% 0.7%	52 223	-3.8% 21.1%	343 2493	388 2277	-11.6% 9.5%

Independence Division (17)								
	<u>Current month</u>	<u>Previous Month</u>	<u>Percent Change</u>	<u>Same Month Last Year</u>	<u>Percent Change</u>	<u>Current Year-to-Date</u>	<u>Past Year-to-Date</u>	<u>Percent Change</u>
MURDER & NON-NEGLIGENT MANSLAUGHTER	-1	0	NA	1	-200.0%	3	4	-25.0%
RAPE	2	3	-33.3%	0	NA	16	23	-30.4%
ROBBERY	21	19	10.5%	33	-36.4%	192	157	22.3%
ARMED	17	15	13.3%	25	-32.0%	159	128	24.2%
STRONG-ARM	4	4	0.0%	8	-50.0%	33	29	13.8%
AGGRAVATED ASSAULT	25	20	25.0%	18	38.9%	232	202	14.9%
BURGLARY	75	80	-6.3%	101	-25.7%	743	671	10.7%
RESIDENTIAL	67	69	-2.9%	91	-26.4%	578	540	7.0%
COMMERCIAL	8	11	-27.3%	10	-20.0%	165	131	26.0%
LARCENY	139	141	-1.4%	158	-12.0%	1562	1631	-4.2%
FROM AUTO	75	71	5.6%	90	-16.7%	889	908	-2.1%
BICYCLE	1	4	-75.0%	5		32	41	-22.0%
SHOPLIFTING	16	8	100.0%	13	23.1%	155	131	18.3%
OTHERS	47	58	-19.0%	50	-6.0%	486	551	-11.8%
VEHICLE THEFT	34	33	3.0%	42	-19.0%	319	374	-14.7%
ARSON	3	2	50.0%	3	0.0%	19	20	-5.0%
TOTALS	298	298	0.0%	356	-16.3%	3086	3082	0.1%
VIOLENT PROPERTY	47 251	42 256	11.9% -2.0%	52 304	-9.6% -17.4%	443 2643	386 2696	14.8% -2.0%

South Service Area:

October, 2008

Providence Division (16)								
	<u>Current month</u>	<u>Previous Month</u>	<u>Percent Change</u>	<u>Same Month Last Year</u>	<u>Percent Change</u>	<u>Current Year-to-Date</u>	<u>Past Year-to-Date</u>	<u>Percent Change</u>
MURDER & NON-NEGLIGENT MANSLAUGHTER	1	0	NA	2	-50.0%	2	5	-60.0%
RAPE	1	2	-50.0%	1	0.0%	14	13	7.7%
ROBBERY	15	18	-16.7%	13	15.4%	124	111	11.7%
ARMED	13	14	-7.1%	9	44.4%	85	80	6.3%
STRONG-ARM	2	4	-50.0%	4	-50.0%	39	31	25.8%
AGGRAVATED ASSAULT	16	11	45.5%	11	45.5%	140	118	18.6%
BURGLARY	57	68	-16.2%	85	-32.9%	732	830	-11.8%
RESIDENTIAL	42	42	0.0%	62	-32.3%	533	467	14.1%
COMMERCIAL	15	26	-42.3%	23	-34.8%	199	363	-45.2%
LARCENY	191	170	12.4%	256	-25.4%	2364	2456	-3.7%
FROM AUTO	106	86	23.3%	175	-39.4%	1446	1458	-0.8%
BICYCLE	2	1	100.0%	5		18	24	-25.0%
SHOPLIFTING	16	17	-5.9%	15	6.7%	204	194	5.2%
OTHERS	67	66	1.5%	61	9.8%	696	780	-10.8%
VEHICLE THEFT	25	31	-19.4%	39	-35.9%	278	237	17.3%
ARSON	0	4	-100.0%	1	-100.0%	13	13	0.0%
TOTALS	306	304	0.7%	408	-25.0%	3667	3783	-3.1%
VIOLENT PROPERTY	33	31	6.5%	27	22.2%	280	247	13.4%
	273	273	0.0%	381	-28.3%	3387	3536	-4.2%

South Division (22)								
	<u>Current month</u>	<u>Previous Month</u>	<u>Percent Change</u>	<u>Same Month Last Year</u>	<u>Percent Change</u>	<u>Current Year-to-Date</u>	<u>Past Year-to-Date</u>	<u>Percent Change</u>
MURDER & NON-NEGLIGENT MANSLAUGHTER	0	1	-100.0%	0	NA	1	1	0.0%
RAPE	3	2	50.0%	1	200.0%	10	10	0.0%
ROBBERY	3	7	-57.1%	3	0.0%	49	43	14.0%
ARMED	3	4	-25.0%	2	50.0%	35	33	6.1%
STRONG-ARM	0	3	-100.0%	1	-100.0%	14	10	40.0%
AGGRAVATED ASSAULT	9	1	800.0%	12	-25.0%	86	76	13.2%
BURGLARY	33	44	-25.0%	75	-56.0%	522	517	1.0%
RESIDENTIAL	26	38	-31.6%	65	-60.0%	410	385	6.5%
COMMERCIAL	7	6	16.7%	10	-30.0%	112	132	-15.2%
LARCENY	180	146	23.3%	194	-7.2%	1874	1608	16.5%
FROM AUTO	84	75	12.0%	133	-36.8%	1130	949	19.1%
BICYCLE	3	0	NA	1		17	13	30.8%
SHOPLIFTING	16	20	-20.0%	10	60.0%	151	98	54.1%
OTHERS	77	51	51.0%	50	54.0%	576	548	5.1%
VEHICLE THEFT	11	11	0.0%	8	37.5%	138	146	-5.5%
ARSON	1	3	-66.7%	1	0.0%	15	23	-34.8%
TOTALS	240	215	11.6%	294	-18.4%	2695	2424	11.2%
VIOLENT PROPERTY	15	11	36.4%	16	-6.3%	146	130	12.3%
	225	204	10.3%	278	-19.1%	2549	2294	11.1%

Southwest Service Area:

October, 2008

Westover Division (26)								
	<u>Current month</u>	<u>Previous Month</u>	<u>Percent Change</u>	<u>Same Month Last Year</u>	<u>Percent Change</u>	<u>Current Year-to-Date</u>	<u>Past Year-to-Date</u>	<u>Percent Change</u>
MURDER & NON-NEGLIGENT MANSLAUGHTER	1	2	-50.0%	1	0.0%	10	8	25.0%
RAPE	0	1	-100.0%	3	-100.0%	23	18	27.8%
ROBBERY	39	27	44.4%	33	18.2%	264	295	-10.5%
ARMED	33	24	37.5%	28	17.9%	214	251	-14.7%
STRONG-ARM	6	3	100.0%	5	20.0%	50	44	13.6%
AGGRAVATED ASSAULT	25	62	-59.7%	32	-21.9%	397	346	14.7%
BURGLARY	78	70	11.4%	76	2.6%	770	925	-16.8%
RESIDENTIAL	53	53	0.0%	40	32.5%	564	514	9.7%
COMMERCIAL	25	17	47.1%	36	-30.6%	206	411	-49.9%
LARCENY	189	154	22.7%	210	-10.0%	1993	2257	-11.7%
FROM AUTO	88	68	29.4%	132	-33.3%	1104	1326	-16.7%
BICYCLE	1	4	-75.0%	2		15	16	-6.3%
SHOPLIFTING	35	17	105.9%	11	218.2%	189	213	-11.3%
OTHERS	65	65	0.0%	65	0.0%	685	702	-2.4%
VEHICLE THEFT	37	29	27.6%	42	-11.9%	390	449	-13.1%
ARSON	-2	2	-200.0%	4	-150.0%	22	36	-38.9%
TOTALS	367	347	5.8%	401	-8.5%	3869	4334	-10.7%
VIOLENT PROPERTY	65 302	92 255	-29.3% 18.4%	69 332	-5.8% -9.0%	694 3175	667 3667	4.0% -13.4%

Steele Creek Division (21)								
	<u>Current month</u>	<u>Previous Month</u>	<u>Percent Change</u>	<u>Same Month Last Year</u>	<u>Percent Change</u>	<u>Current Year-to-Date</u>	<u>Past Year-to-Date</u>	<u>Percent Change</u>
MURDER & NON-NEGLIGENT MANSLAUGHTER	1	1	0.0%	0	NA	9	3	200.0%
RAPE	1	0	NA	2	-50.0%	14	27	-48.1%
ROBBERY	17	21	-19.0%	16	6.3%	227	275	-17.5%
ARMED	13	17	-23.5%	14	-7.1%	191	241	-20.7%
STRONG-ARM	4	4	0.0%	2	100.0%	36	34	5.9%
AGGRAVATED ASSAULT	36	29	24.1%	22	63.6%	236	275	-14.2%
BURGLARY	59	63	-6.3%	89	-33.7%	750	702	6.8%
RESIDENTIAL	49	47	4.3%	72	-31.9%	579	460	25.9%
COMMERCIAL	10	16	-37.5%	17	-41.2%	171	242	-29.3%
LARCENY	218	186	17.2%	319	-31.7%	2651	2716	-2.4%
FROM AUTO	111	89	24.7%	239	-53.6%	1555	1652	-5.9%
BICYCLE	1	3	-66.7%	0		11	16	-31.3%
SHOPLIFTING	29	18	61.1%	16	81.3%	268	250	7.2%
OTHERS	77	76	1.3%	64	20.3%	817	798	2.4%
VEHICLE THEFT	59	54	9.3%	53	11.3%	477	462	3.2%
ARSON	3	2	50.0%	1	200.0%	35	31	12.9%
TOTALS	394	356	10.7%	502	-21.5%	4399	4491	-2.0%
VIOLENT PROPERTY	55 339	51 305	7.8% 11.1%	40 462	37.5% -26.6%	486 3913	580 3911	-16.2% 0.1%

West Service Area:**October, 2008**

Metro Division (02)								
	<u>Current month</u>	<u>Previous Month</u>	<u>Percent Change</u>	<u>Same Month Last Year</u>	<u>Percent Change</u>	<u>Current Year-to-Date</u>	<u>Past Year-to-Date</u>	<u>Percent Change</u>
MURDER & NON-NEGLIGENT MANSLAUGHTER	0	0	NA	0	NA	8	11	-27.3%
RAPE	1	0	NA	4	-75.0%	21	30	-30.0%
ROBBERY	31	30	3.3%	29	6.9%	278	270	3.0%
ARMED	24	23	4.3%	24	0.0%	225	219	2.7%
STRONG-ARM	7	7	0.0%	5	40.0%	53	51	3.9%
AGGRAVATED ASSAULT	50	43	16.3%	59	-15.3%	516	481	7.3%
BURGLARY	91	99	-8.1%	113	-19.5%	853	926	-7.9%
RESIDENTIAL	52	68	-23.5%	68	-23.5%	551	576	-4.3%
COMMERCIAL	39	31	25.8%	45	-13.3%	302	350	-13.7%
LARCENY	157	162	-3.1%	208	-24.5%	1811	1726	4.9%
FROM AUTO	75	70	7.1%	106	-29.2%	856	772	10.9%
BICYCLE	1	4	-75.0%	0		21	9	133.3%
SHOPLIFTING	20	24	-16.7%	13	53.8%	176	140	25.7%
OTHERS	61	64	-4.7%	89	-31.5%	758	805	-5.8%
VEHICLE THEFT	33	46	-28.3%	42	-21.4%	427	401	6.5%
ARSON	2	3	-33.3%	3	-33.3%	26	45	-42.2%
TOTALS	365	383	-4.7%	458	-20.3%	3940	3890	1.3%
VIOLENT PROPERTY	82 283	73 310	12.3% -8.7%	92 366	-10.9% -22.7%	823 3117	792 3098	3.9% 0.6%

Freedom Division (27)								
	<u>Current month</u>	<u>Previous Month</u>	<u>Percent Change</u>	<u>Same Month Last Year</u>	<u>Percent Change</u>	<u>Current Year-to-Date</u>	<u>Past Year-to-Date</u>	<u>Percent Change</u>
MURDER & NON-NEGLIGENT MANSLAUGHTER	0	0	NA	0	NA	2	4	-50.0%
RAPE	1	0	NA	2	-50.0%	20	16	25.0%
ROBBERY	16	22	-27.3%	19	-15.8%	199	216	-7.9%
ARMED	15	17	-11.8%	15	0.0%	164	187	-12.3%
STRONG-ARM	1	5	-80.0%	4	-75.0%	35	29	20.7%
AGGRAVATED ASSAULT	38	23	65.2%	15	153.3%	358	303	18.2%
BURGLARY	99	121	-18.2%	49	102.0%	874	1092	-20.0%
RESIDENTIAL	81	93	-12.9%	91	-11.0%	683	710	-3.8%
COMMERCIAL	18	28	-35.7%	-42	-142.9%	191	382	-50.0%
LARCENY	194	177	9.6%	217	-10.6%	2049	2329	-12.0%
FROM AUTO	87	78	11.5%	140	-37.9%	1082	1302	-16.9%
BICYCLE	1	1	0.0%	2		13	13	0.0%
SHOPLIFTING	23	14	64.3%	18	27.8%	153	199	-23.1%
OTHERS	83	84	-1.2%	57	45.6%	801	815	-1.7%
VEHICLE THEFT	35	37	-5.4%	53	-34.0%	435	514	-15.4%
ARSON	4	2	100.0%	5	-20.0%	24	36	-33.3%
TOTALS	387	382	1.3%	360	7.5%	3961	4510	-12.2%
VIOLENT PROPERTY	55 332	45 337	22.2% -1.5%	36 324	52.8% 2.5%	579 3382	539 3971	7.4% -14.8%

Central Service Area:**October, 2008**

Central Division (01)								
	<u>Current</u> <u>month</u>	<u>Previous</u> <u>Month</u>	<u>Percent</u> <u>Change</u>	<u>Same Month</u> <u>Last Year</u>	<u>Percent</u> <u>Change</u>	<u>Current Year-</u> <u>to-Date</u>	<u>Past Year-</u> <u>to-Date</u>	<u>Percent</u> <u>Change</u>
MURDER & NON-NEGLIGENT MANSLAUGHTER	0	1	-100.0%	0	NA	2	3	-33.3%
RAPE	3	3	0.0%	1	200.0%	23	13	76.9%
ROBBERY	13	13	0.0%	7	85.7%	104	103	1.0%
ARMED	7	12	-41.7%	4	75.0%	69	63	9.5%
STRONG-ARM	6	1	500.0%	3	100.0%	35	40	-12.5%
AGGRAVATED ASSAULT	16	7	128.6%	12	33.3%	105	129	-18.6%
BURGLARY	22	27	-18.5%	37	-40.5%	243	252	-3.6%
RESIDENTIAL	9	9	0.0%	11	-18.2%	104	95	9.5%
COMMERCIAL	13	18	-27.8%	26	-50.0%	139	157	-11.5%
LARCENY	162	142	14.1%	227	-28.6%	1753	1942	-9.7%
FROM AUTO	62	58	6.9%	146	-57.5%	886	1094	-19.0%
BICYCLE	2	1	100.0%	0	NA	12	13	-7.7%
SHOPLIFTING	16	6	166.7%	15	6.7%	119	104	14.4%
OTHERS	82	77	6.5%	66	24.2%	736	731	0.7%
VEHICLE THEFT	19	13	46.2%	22	-13.6%	182	233	-21.9%
ARSON	0	1	-100.0%	0	NA	3	4	-25.0%
TOTALS	235	207	13.5%	306	-23.2%	2415	2679	-9.9%
VIOLENT PROPERTY	32 203	24 183	33.3% 10.9%	20 286	60.0% -29.0%	234 2181	248 2431	-5.6% -10.3%

Year-to-Date Index Crimes by Service Area: October, 2008

Index Offenses	East Service Area Totals			North Service Area Totals			Southeast Service Area Totals		
	Current Year- to-Date	Past Year- to-Date	Percent Change	Current Year- to-Date	Past Year- to-Date	Percent Change	Current Year- to-Date	Past Year- to-Date	Percent Change
MURDER & NON-NEGLIGENT MANSLAUGHTER	13	14	-7.1%	12	4	200.0%	8	4	100.0%
RAPE	42	31	35.5%	25	33	-24.2%	31	41	-24.4%
ROBBERY	566	672	-15.8%	286	266	7.5%	358	343	4.4%
ARMED	492	573	-14.1%	248	232	6.9%	305	283	7.8%
STRONG-ARM	74	99	-25.3%	38	34	11.8%	53	60	-11.7%
AGGRAVATED ASSAULT	595	570	4.4%	361	395	-8.6%	389	386	0.8%
BURGLARY	1639	1657	-1.1%	2091	2191	-4.6%	1489	1324	12.5%
RESIDENTIAL	1214	1128	7.6%	1674	1737	-3.6%	1194	1078	10.8%
COMMERCIAL	425	529	-19.7%	417	454	-8.1%	295	246	19.9%
LARCENY	3273	3381	-3.2%	4799	5030	-4.6%	2883	2880	0.1%
FROM AUTO	1661	1722	-3.5%	2724	2966	-8.2%	1559	1549	0.6%
BICYCLE	35	42	-16.7%	26	31	-16.1%	48	59	-18.6%
SHOPLIFTING	450	362	24.3%	644	498	29.3%	273	231	18.2%
OTHERS	1127	1255	-10.2%	1405	1535	-8.5%	1003	1041	-3.7%
VEHICLE THEFT	839	994	-15.6%	696	787	-11.6%	720	725	-0.7%
ARSON	42	48	-12.5%	53	58	-8.6%	44	44	0.0%
TOTALS	7009	7367	-4.9%	8323	8764	-5.0%	5922	5747	3.0%
VIOLENT PROPERTY	1216 5793	1287 6080	-5.5% -4.7%	684 7639	698 8066	-2.0% -5.3%	786 5136	774 4973	1.6% 3.3%

Year-to-Date Index Crimes by Service Area: October, 2008

Index Offenses	South Service Area Totals			Southwest Service Area Totals			West Service Area Totals		
	<u>Current Year- to-Date</u>	<u>Past Year- to-Date</u>	<u>Percent Change</u>	<u>Current Year- to-Date</u>	<u>Past Year- to-Date</u>	<u>Percent Change</u>	<u>Current Year- to-Date</u>	<u>Past Year- to-Date</u>	<u>Percent Change</u>
MURDER & NON-NEGLIGENT MANSLAUGHTER	3	6	-50.0%	19	11	72.7%	10	15	-33.3%
RAPE	24	23	4.3%	37	45	-17.8%	41	46	-10.9%
ROBBERY	173	154	12.3%	491	570	-13.9%	477	486	-1.9%
ARMED	120	113	6.2%	405	492	-17.7%	389	406	-4.2%
STRONG-ARM	53	41	29.3%	86	78	10.3%	88	80	10.0%
AGGRAVATED ASSAULT	226	194	16.5%	633	621	1.9%	874	784	11.5%
BURGLARY	1254	1347	-6.9%	1520	1627	-6.6%	1727	2018	-14.4%
RESIDENTIAL	943	852	10.7%	1143	974	17.4%	1234	1286	-4.0%
COMMERCIAL	311	495	-37.2%	377	653	-42.3%	493	732	-32.7%
LARCENY	4238	4064	4.3%	4644	4973	-6.6%	3860	4055	-4.8%
FROM AUTO	2576	2407	7.0%	2659	2978	-10.7%	1938	2074	-6.6%
BICYCLE	35	37	-5.4%	26	32	-18.8%	34	22	54.5%
SHOPLIFTING	355	292	21.6%	457	463	-1.3%	329	339	-2.9%
OTHERS	1272	1328	-4.2%	1502	1500	0.1%	1559	1620	-3.8%
VEHICLE THEFT	416	383	8.6%	867	911	-4.8%	862	915	-5.8%
ARSON	28	36	-22.2%	57	67	-14.9%	50	81	-38.3%
TOTALS	6362	6207	2.5%	8268	8825	-6.3%	7901	8400	-5.9%
VIOLENT PROPERTY	426 5936	377 5830	13.0% 1.8%	1180 7088	1247 7578	-5.4% -6.5%	1402 6499	1331 7069	5.3% -8.1%

Year-to-Date Index Crimes by Service Area: October, 2008

Index Offenses	Central Service Area Totals		
	<u>Current Year-</u> <u>to-Date</u>	<u>Past Year-</u> <u>to-Date</u>	<u>Percent</u> <u>Change</u>
MURDER & NON-NEGLIGENT MANSLAUGHTER	2	3	-33.3%
RAPE	23	13	76.9%
ROBBERY	104	103	1.0%
ARMED	69	63	9.5%
STRONG-ARM	35	40	-12.5%
AGGRAVATED ASSAULT	105	129	-18.6%
BURGLARY	243	252	-3.6%
RESIDENTIAL	104	95	9.5%
COMMERCIAL	139	157	-11.5%
LARCENY	1753	1942	-9.7%
FROM AUTO	886	1094	-19.0%
BICYCLE	12	13	-7.7%
SHOPLIFTING	119	104	14.4%
OTHERS	736	731	0.7%
VEHICLE THEFT	182	233	-21.9%
ARSON	3	4	-25.0%
TOTALS	2415	2679	-9.9%
VIOLENT PROPERTY	234 2181	248 2431	-5.6% -10.3%

Arrests by Charlotte-Mecklenburg Police Department
Year-To-Date: 2007-2008
(Through October)

CATEGORY	ADULTS (AGE 18 & OLDER):			JUVENILES (UNDER 18):			TOTAL ARRESTS:		
	2007 Y-T-D	2008 Y-T-D	% CHANGE	2007 Y-T-D	2008 Y-T-D	% CHANGE	2007 Y-T-D	2008 Y-T-D	% CHANGE
Murder/Non-Negligent Manslaughter	32	29	-9.4%	4	3	-25.0%	36	32	-11.1%
Negligent & Vehicular Manslaughter	1	3	200.0%	1	1	0.0%	2	4	100.0%
Rape	22	26	18.2%	4	5	25.0%	26	31	19.2%
Robbery	351	360	2.6%	148	106	-28.4%	499	466	-6.6%
Aggravated Assault	1341	1283	-4.3%	204	154	-24.5%	1545	1437	-7.0%
Burglary	583	591	1.4%	336	367	9.2%	919	958	4.2%
Larceny	1183	1508	27.5%	483	538	11.4%	1666	2046	22.8%
Vehicle Theft	71	95	33.8%	100	92	-8.0%	171	187	9.4%
Non-Aggravated Assault	1727	1743	0.9%	660	636	-3.6%	2387	2379	-0.3%
Arson	11	9	-18.2%	27	21	-22.2%	38	30	-21.1%
Forgery/Counterfeit	102	110	7.8%	0	1	NA	102	111	8.8%
Fraud	385	402	4.4%	3	8	166.7%	388	410	5.7%
Embezzlement	80	103	28.8%	11	15	36.4%	91	118	29.7%
Stolen Property	441	445	0.9%	111	106	-4.5%	552	551	-0.2%
Vandalism	232	175	-24.6%	216	168	-22.2%	448	343	-23.4%
Weapons	748	682	-8.8%	46	140	204.3%	794	822	3.5%
Prostitution	166	224	34.9%	1	4	300.0%	167	228	36.5%
Sex Offenses	194	160	-17.5%	16	13	-18.8%	210	173	-17.6%
Drugs	2760	2998	8.6%	359	331	-7.8%	3119	3329	6.7%
Gambling	1	6	500.0%	0	0	NA	1	6	500.0%
Offenses vs. Family	0	5	NA	0	0	NA	0	5	NA
DUI	1662	1958	17.8%	9	8	-11.1%	1671	1966	17.7%
Liquor	227	283	24.7%	23	35	52.2%	250	318	27.2%
Disorder.Conduct	554	621	12.1%	310	266	-14.2%	864	887	2.7%
Other Non-Traffic	6519	6688	2.6%	795	638	-19.7%	7314	7326	0.2%
VIOLENT INDEX¹	1746	1698	-2.7%	360	268	-25.6%	2106	1966	-6.6%
PROPERTY INDEX²	1848	2203	19.2%	946	1018	7.6%	2794	3221	15.3%
INDEX SUBTOTAL	3594	3901	8.5%	1306	1286	-1.5%	4900	5187	5.9%
PART 2 SUBTOTAL³	15799	16606	5.1%	2561	2370	-7.5%	18360	18976	3.4%
TOTAL	19393	20507	5.7%	3867	3656	-5.5%	23260	24163	3.9%

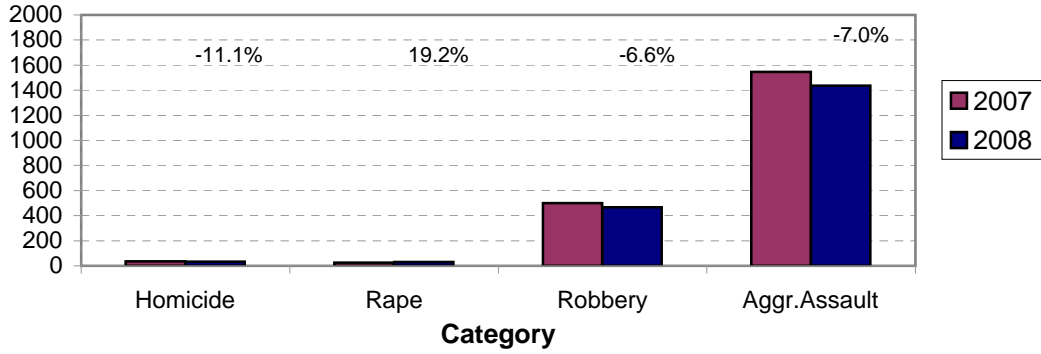
Note: Juvenile arrest totals for June 2007 included the late entry of some arrests from previous months. Monthly totals under 18 for 2007 and 2008 were adjusted in April, 2008, to include some juvenile arrests (under 16) that were not originally counted in the arrest data due to an error in the computer program.

¹Violent Index includes murder and non-negligent manslaughter, rape, robbery, and aggravated assault.

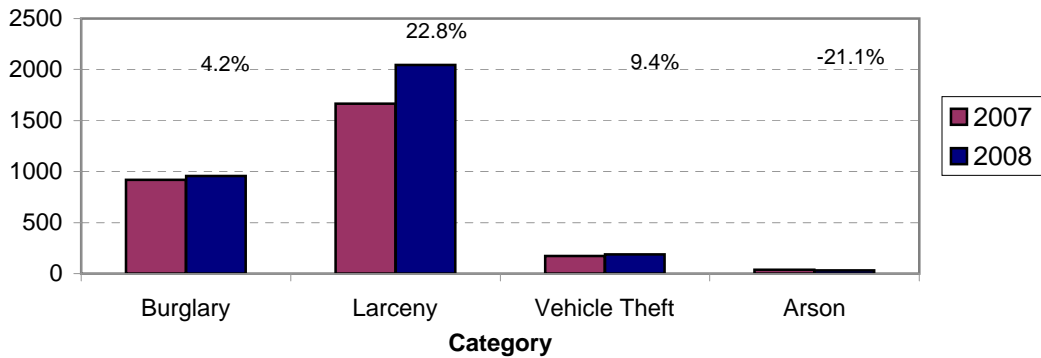
²Property Index includes burglary, larceny, vehicle theft, and arson.

³Part 2 crimes include crime categories not counted in the Index totals.

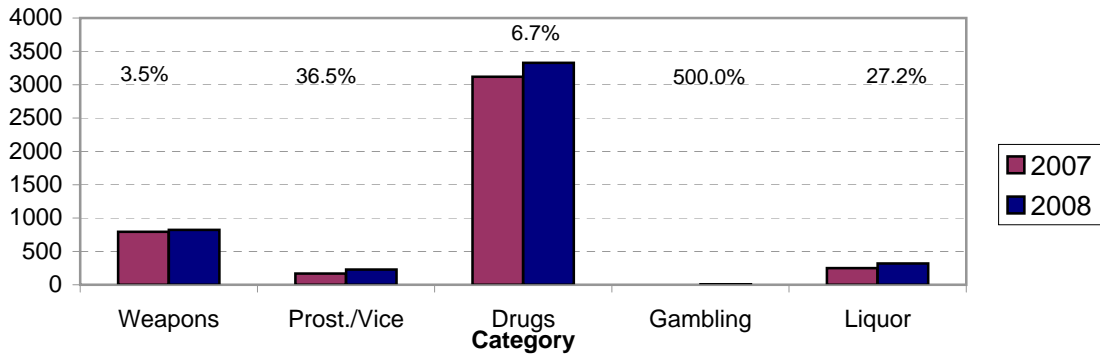
**Violent Index Arrests Year-to-Date
Charlotte-Mecklenburg Police Department: 2007-2008
(Through October)**



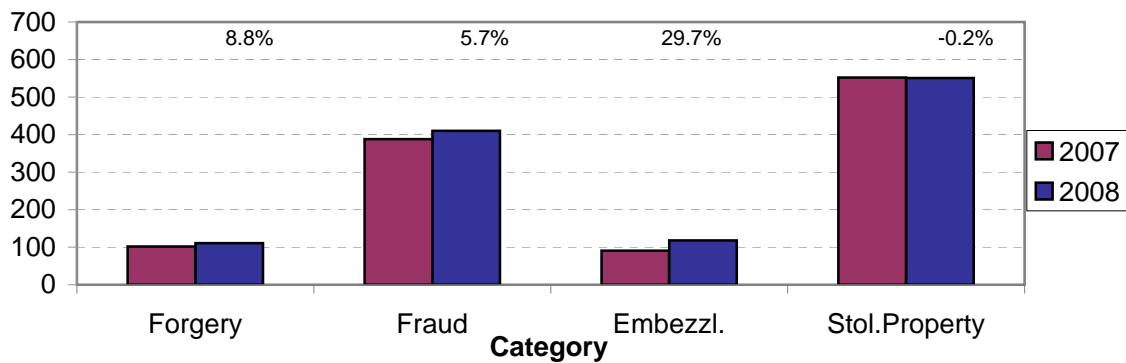
**Property Index Arrests Year-to-Date
Charlotte-Mecklenburg Police Department: 2007-2008
(Through October)**



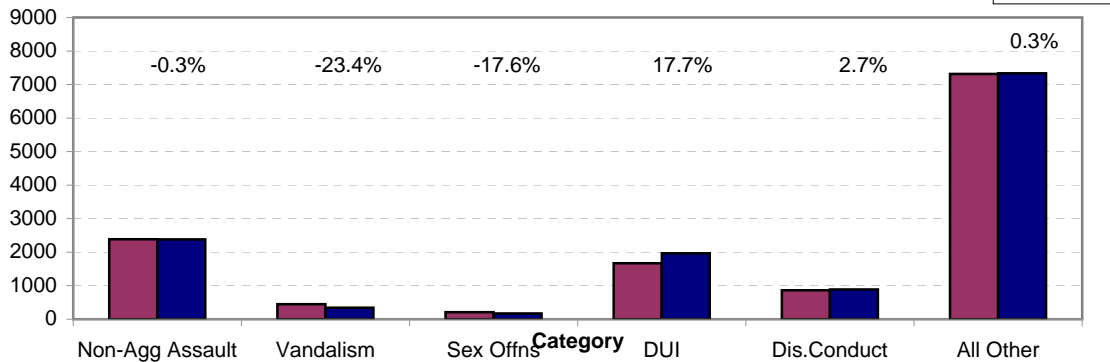
**Arrests for Vice/CCW/Drugs/Etc. Year-to-Date
Charlotte-Mecklenburg Police Department: 2007-2008
(Through October)**



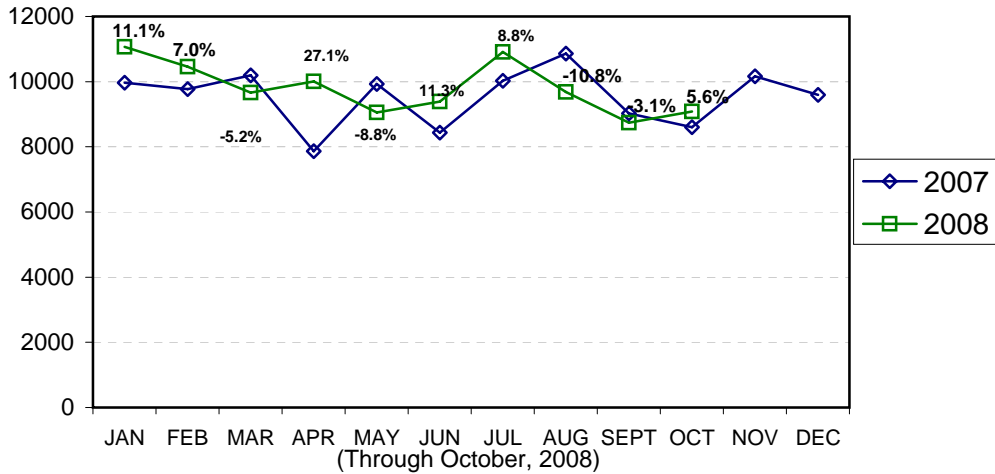
**Arrests for Property/White Collar Crime Year-to-Date
Charlotte-Mecklenburg Police Department: 2007-2008
(Through October)**



**Arrests for Other Categories Year-to-Date
Charlotte-Mecklenburg Police Department: 2007-2008
(Through October)**

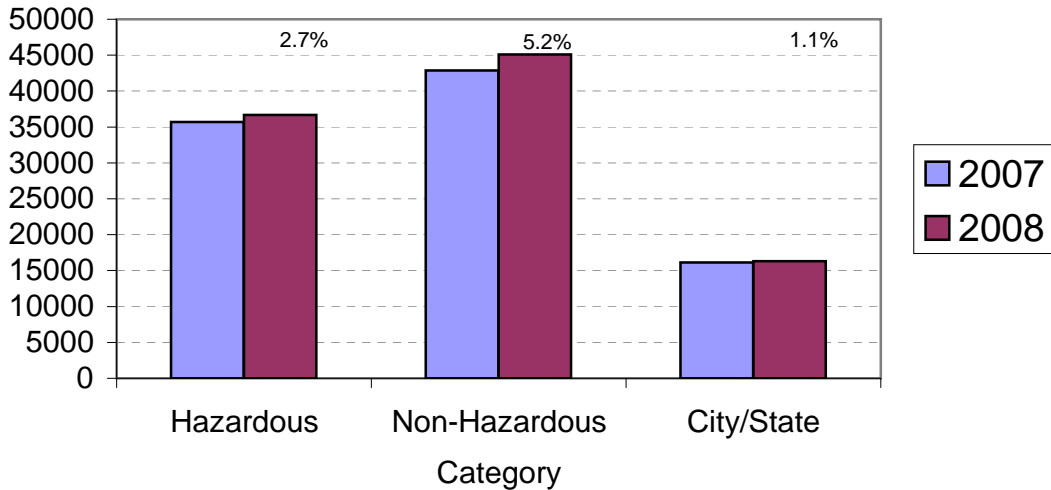


Total Citation Enforcement by Month Charlotte-Mecklenburg Police Dept.: 2007-2008



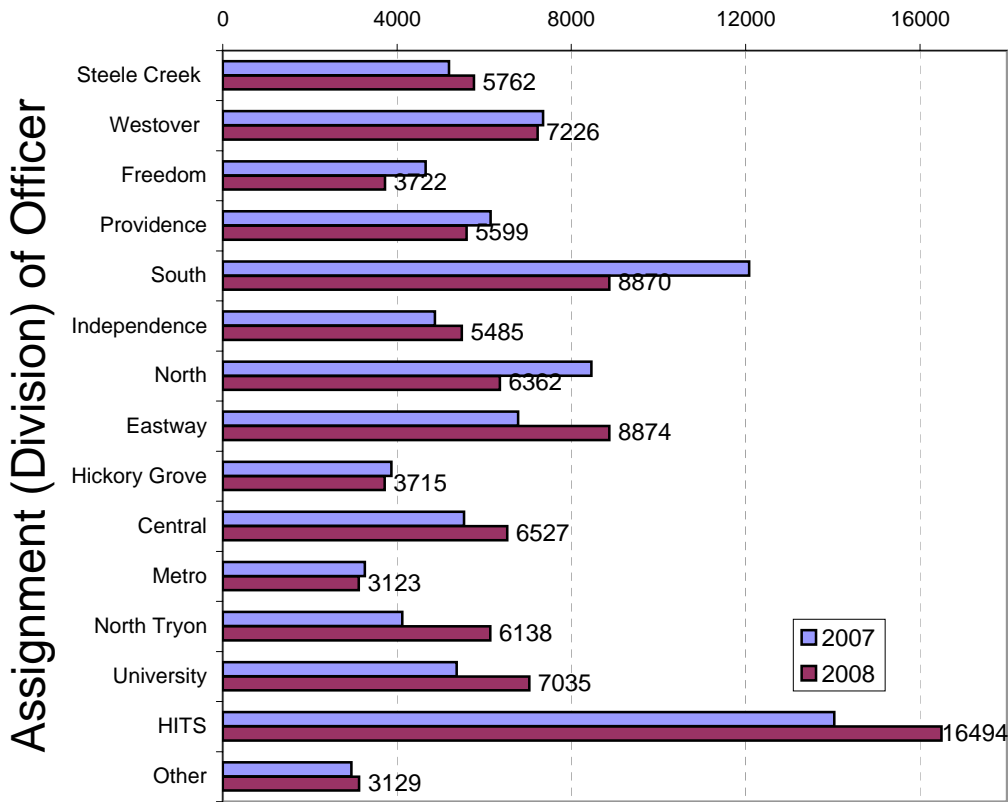
(Includes both traffic and non traffic citations; percentages are current month compared to same month in previous year. Monthly totals may be affected by data entry delays or copies not being routed to the Records Division for talling.)

CMPD Citation Enforcement by Category Year-to-Date, 2007-2008 (Through October, 2008)



**Citations Issued Year-to-Date by CMPD Divisions
2008**

(Through October, 2008)



Note: Officers' division assignments for Jan 1-12, 2007, were based on the 12 division configuration. Totals may be affected by data entry delays, copies not being routed to the Records Division, errors in data entry, or changes in divisions/reorganizations.

**Citations Reported by the Charlotte Mecklenburg Police Year-to-Date
(Through October, 2008)**

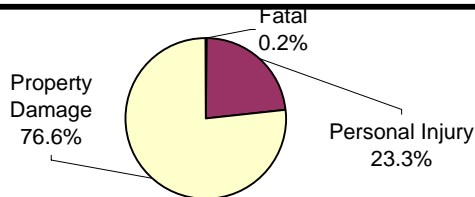
	<u>2007</u>	<u>2008</u>	<u>% Change</u>
Hazardous	35,684	36,664	2.7%
Non-Hazardous	42,859	45,100	5.2%
Other City/State Statute/Ordinance	16,124	16,297	1.1%
Total	94,667	98,061	3.6%

**Traffic Collision Reports Recorded by
Charlotte-Mecklenburg Police Department
2008 Year-to-Date (See note)
(Through October)**

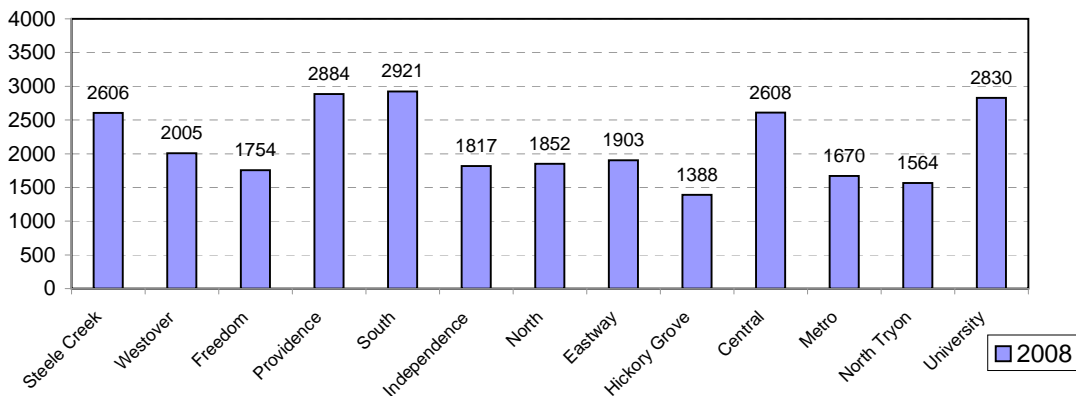
Type	2008
Fatal Collision Reports	44
Vehicle Occupants Killed	32
Pedestrians Killed	12
Personal Injury Collisions	6473
Property Damage Collisions	21285
Total Collision Reports	27802

Note: Comparisons with previous years cannot be provided due to changes related to the adoption of the NC DMV's TraCs reporting system in the third quarter of 2007. This data includes any incident documented on a collision report, regardless of whether the report was required under state and DMV laws.

**Traffic Collision Reports by Type
Charlotte-Mecklenburg Police Department:
2008 Year-to-Date
(Through October)**



**Traffic Collision Reports - Charlotte-Mecklenburg Police Dept.
Year-to-Date By Location (Division) : 2008**



**CITIZEN-INITIATED CALLS FOR SERVICE¹ BY TYPE
CHARLOTTE-MECKLENBURG POLICE DEPARTMENT**

<u>Type of Call²</u>	<u>2007 Year-to-Date⁵</u>	<u>2008 Year-to-Date⁵</u>	<u>Year-to-Date</u>
	<u>Through October</u>	<u>Through October</u>	<u>% Change</u>
ABC RELATED	1825	1915	4.9%
ACCIDENT	30237	27999	-7.4%
ALARM	30849	33914	9.9%
ANIMAL CONTROL ³	285	370	29.8%
ASSAULT	4042	3897	-3.6%
ASSAULT WITH DEADLY WEAPON	2004	2144	7.0%
ASSIST OTHER AGENCY	7701	7842	1.8%
BOMB THREAT	91	51	-44.0%
BREAK/ENTER	16659	16657	0.0%
CDCP CLINICIAN VISIT ⁴	1390	1473	6.0%
COMMUNICATING THREATS	2961	2903	-2.0%
COUNTY SECURITY ³	8	12	50.0%
CRIMINAL INTELLIGENCE	17	6	-64.7%
CRITICAL INCIDENT ⁴	3	18	500.0%
DAMAGE TO PROPERTY	7403	6732	-9.1%
DEATH	184	164	-10.9%
DISTURBANCE	23997	23851	-0.6%
DOMESTIC INCIDENT	28261	28183	-0.3%
DRUG RELATED	3833	3489	-9.0%
EXTORTION/BLACKMAIL ⁴	10	10	0.0%
FIGHT	2594	2714	4.6%
FIRE CASE	79	66	-16.5%
FRAUD/FORGERY	3469	3726	7.4%
GAMBLING	10	17	70.0%
HARASSMENT	1672	1698	1.6%
HIT AND RUN	6766	6175	-8.7%
JUVENILE RELATED	1753	1858	6.0%
KIDNAPPING	171	144	-15.8%
LAKE ENFORCEMENT	382	80	-79.1%
LARCENY	28415	27915	-1.8%
LOITERING	4824	5248	8.8%
MISSING PERSON	5751	5166	-10.2%
NOISE COMPLAINT	12751	12487	-2.1%
OFFENSE AGAINST FAMILY	22	2	-90.9%
OFFICER CALLED IN	22	1	-95.5%
OVERDOSE	316	379	19.9%
PORNOGRAPHY	19	8	-57.9%
PROPERTY	6658	5156	-22.6%
PROSTITUTION	1092	675	-38.2%
PUBLIC SERVICE	13561	13674	0.8%
QUALITY OF LIFE	624	568	-9.0%
ROBBERY	2894	2638	-8.8%
SEX CRIME	1068	1014	-5.1%
SPECIAL SERVICE REQUEST ⁴	4	6	50.0%
SUICIDE	1150	1246	8.3%
SUSPICIOUS PERSON	17289	18309	5.9%
TRAFFIC RELATED	10017	11505	14.9%
TRESPASS	3978	3559	-10.5%
VEHICLE RELATED	29057	28729	-1.1%
VIOLENT CRIMES TASK FORCE ⁴	1	1	NA
WARRANT RELATED	2372	2410	1.6%
WEAPON RELATED	7449	6843	-8.1%
ZONE CHECK-ADVISED EVENT ⁴	10	16	60.0%
911 HANG UP / CALLBACK	10995	9775	-11.1%
TOTAL	338995	335438	-1.0%

¹These totals exclude duplicate and cancelled calls for service; they include calls handled by the Crime Reporting Unit as well as by division field officers, detectives and related CMPD staff.

²The type of call is determined from the 911 call, unless updated by an officer assigned to respond.

³In this summary, calls to Animal Control, Mecklenburg County Security, or Davidson Police are not included unless they also involve the dispatching of C-MPD field officers or detectives.

⁴This call type may not have been in use during part or all of the previous year or current year.

⁵Call totals may not match previously published totals due to adjustments for changes in call codes and procedures.

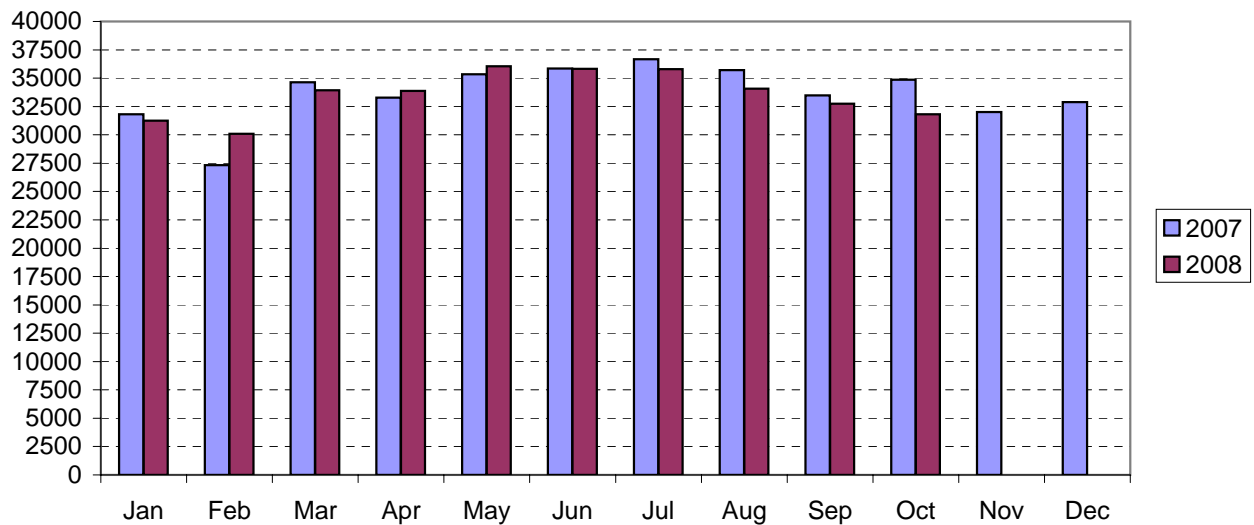
CITIZEN-INITIATED CALLS FOR SERVICE BY ORIGINATING CMPD DIVISION^{1,2}
 (Based on District of Call Origination, Not on Assigned District of Responding Units)

<u>District</u>	<u>2007 Year-to-Date Through October</u>	<u>2008 Year-to-Date Through October</u>	<u>Year-to-Date % Change</u>
Central-01	19811	19699	-0.6%
Metro-02	31163	29899	-4.1%
Eastway-06	26607	26812	0.8%
North Tryon-07	25729	24996	-2.8%
North-11 (C1)	27593	27809	0.8%
Hickory Grove-12	20594	20904	1.5%
University-14	27231	28266	3.8%
Providence-16	26257	27209	3.6%
Independence-17	24245	24239	0.0%
Steele Creek-21	27744	27478	-1.0%
South-22	23871	24813	3.9%
Westover-26	28344	26758	-5.6%
Freedom-27	25967	25976	0.0%
Total²	335156	334858	-0.1%

¹These totals exclude duplicate and cancelled calls for service; they include calls handled by the Crime Reporting Unit as well as by division field officers, detectives and other CMPD staff.

²Calls where the location could not be assigned to one of the divisions are not included in this chart.

Citizen-Initiated Calls for Service¹ by Month
Charlotte-Mecklenburg Police Department: 2007-2008



¹These totals exclude duplicate and cancelled calls for service; they include calls handled by the Crime Reporting Unit as well as by division field officers, detectives and other CMPD staff.

Uniform Crime Reporting Procedures

The Charlotte-Mecklenburg Police Department reports offense and arrest statistics in accordance with standard Uniform Crime Reporting (UCR) guidelines. UCR policy states that any adjustments to previous months can be made on the current month's report:

... Law enforcement investigation in the current month may show that actual offenses the agency recorded on a previous month's report require adjustment; that is, an offense might be (1) unfounded, (2) reclassified, or (3) subtracted from previous totals. It may be necessary for the agency to adjust the totals reported to the UCR Program for the past month or prior months. Agencies can make needed adjustments on the current month's report; these do not affect the reliability of the figures because such adjustments tend to offset one another from month to month over a period of time.

- *Uniform Crime Reporting Handbook*, FBI, 2004, p. 82

We are required to report crime monthly to the UCR program, and we do therefore make an effort to process monthly changes in a timely manner. However, occasionally due to the review and processing required for reclassifying, unfounding or clearing cases, the current month's totals may reflect the processing of a backlog of these changes from previous months.

Users of the data are cautioned that conclusions about substantial changes in crime trends or in clearance rates based on only a single month's data or trend may reflect some of these adjustments. For this reason, in addition to the monthly and year-to-date trends on Page 1, the monthly report routinely includes a comparison for the previous 12 months, as well as graphs that provide seasonal/monthly comparisons over a five-year period.

UCR Definitions and Terms:

Index Crime: the eight offenses that the national UCR program tracks on a yearly basis to gauge trends in the extent of crime, despite differences among state and local criminal statutes. These offenses were selected on the basis of several factors: seriousness, frequency of occurrence, pervasiveness in all geographic areas, and/or likelihood of being reported to law enforcement.

Violent Index: includes the offenses of murder/non-negligent manslaughter, rape, robbery, and aggravated assault

Property Index: includes the offenses of burglary, larceny, vehicle theft and arson

Murder/non-negligent manslaughter: the willful killing of one human being by another (UCR counts each victim.)

Justifiable Homicide: limited by UCR to either a killing by a law enforcement officer in the line of duty or a killing by a citizen of a felon during the commission of a felony. If a homicide is determined to be "justifiable" by this definition, it is subtracted from the murder/non-negligent manslaughter category after investigation.

Rape: the carnal knowledge of a female forcibly and against her will (UCR counts each victim. Note: This offense does not include other sex offenses or statutory [non-forcible] rape.)

Robbery: the taking or attempt to take anything of value from the care, custody, or control of a person or persons by force, threat of force or violence, or by putting the victim in fear. (UCR counts 1 robbery per incident, regardless of the number of victims robbed in the case.)

Aggravated assault: an unlawful attack by one person on another for the purpose of inflicting severe or aggravated bodily injury; includes 1) all assaults in which a weapon of any type is used or is threatened to be used and/or 2) all assaults where serious injury occurs (UCR counts one aggravated assault for each victim of assault.)

Burglary: the unlawful entry or attempted entry of a structure to commit a felony or a theft (UCR counts 1 burglary per premise/"distinct operation." Note: Each break-in of a distinct "business" office, individual rental storage unit, or similar premise in a multi-unit building is considered a "distinct operation".)

Larceny-Theft: the unlawful taking (or attempt), carrying, leading, or riding away of property from the possession or constructive possession of another (UCR counts 1 offense per total incident. Note: Larceny/theft of a motor vehicle is classed separately.)

Vehicle Theft: the theft or attempted theft of a motor vehicle (UCR counts each vehicle that is a self-propelled vehicle that runs on land and not on rails, excluding farm and construction equipment)

Arson: the willful or malicious burning or attempt to burn, with or without intent to defraud, a structure, motor vehicle, personal property of another, etc. (UCR counts 1 per incident.)

Hierarchy rule: For cases involving multiple-offenses, the incident is classified and counted based on the highest offense on a hierarchy of crimes established by UCR. For example, for an incident involving a rape and a burglary, the incident would be counted in the rape category because rape is higher than burglary on the hierarchy.

Clearance: A case is considered cleared when either 1) at least one arrest is made for the offense or 2) when the offender's identity is established by investigation but the offender will not be arrested for reasons outside law enforcement control (offender dies, victim refuses to prosecute, district attorney declines prosecution, extradition is refused, etc.).

Unfounding: A case is "unfounded" and subtracted from the crime counts when investigation establishes that the incident did not actually occur or that the actions within the incident are not criminal based on current law.

For additional information, please consult the *UCR Handbook* on the FBI website at <http://www.fbi.gov/ucr/ucr.htm>.