



**CHARLOTTE-MECKLENBURG POLICE DEPARTMENT
MONTHLY SUMMARY REPORT
NOVEMBER, 2006**

**Darrel Stephens
Chief of Police**

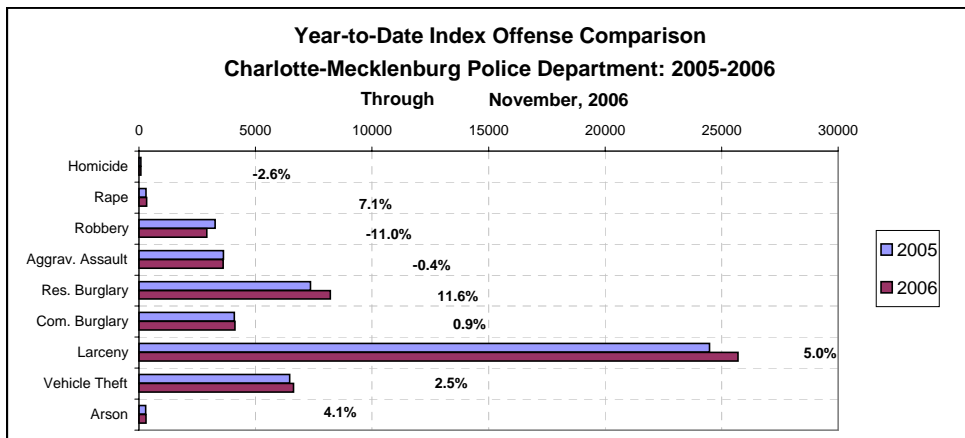
INDEX OFFENSES REPORTED TO CHARLOTTE-MECKLENBURG POLICE DEPARTMENT

November, 2006 INDEX OFFENSES	# THIS MONTH	% OF ALL INDEX	# LAST MONTH	MONTHLY % CHANGE	SAME MONTH LAST YEAR	MONTHLY % CHANGE	THIS YEAR TO DATE	LAST YEAR TO DATE	ANNUAL % CHANGE
HOMICIDE (MURDER & NON-NEGLIGENT MANSLAUGHTER)*	14	0.3%	11	27.3%	7	100.0%	76	78	-2.6%
RAPE TOTAL	29	0.6%	37	-21.6%	30	-3.3%	330	308	7.1%
ACTUAL	28	0.6%	32	-12.5%	28	0.0%	301	291	3.4%
ATTEMPT	1	0.0%	5	-80.0%	2	-50.0%	29	17	70.6%
ROBBERY TOTAL	284	5.7%	253	12.3%	353	-19.5%	2910	3269	-11.0%
ARMED	234	4.7%	223	4.9%	301	-22.3%	2346	2695	-12.9%
STRONG-ARM	50	1.0%	30	66.7%	52	-3.8%	564	574	-1.7%
AGGRAVATED ASSAULT TOTAL	266	5.3%	324	-17.9%	340	-21.8%	3616	3629	-0.4%
BURGLARY TOTAL	1322	26.3%	1263	4.7%	1266	4.4%	12358	11448	7.9%
RESIDENTIAL	906	18.0%	865	4.7%	743	21.9%	8215	7360	11.6%
COMMERCIAL	416	8.3%	398	4.5%	523	-20.5%	4123	4088	0.9%

FORCE	1084	21.6%	1001	8.3%	1073	1.0%	9961	9349	6.5%
NO FORCE	139	2.8%	156	-10.9%	107	29.9%	1461	1367	6.9%
ATTEMPT	99	2.0%	106	-6.6%	86	15.1%	936	731	28.0%
LARCENY TOTAL	2513	50.0%	2593	-3.1%	2194	14.5%	25703	24481	5.0%
\$200 AND OVER	1243	24.8%	1387	-10.4%	1035	20.1%	13193	11978	10.1%
\$50 TO \$200	497	9.9%	447	11.2%	467	6.4%	4879	4907	-0.6%
UNDER \$50	773	15.4%	759	1.8%	692	11.7%	7631	7596	0.5%

FROM AUTO	1383	27.5%	1421	-2.7%	1103	25.4%	13660	12287	11.2%
BICYCLE	14	0.3%	18	-22.2%	15	-6.7%	243	226	7.5%
SHOPLIFTING	232	4.6%	210	10.5%	261	-11.1%	2400	2397	0.1%
OTHERS	884	17.6%	944	-6.4%	815	8.5%	9438	9571	-1.4%
VEHICLE THEFT TOTAL	582	11.6%	639	-8.9%	537	8.4%	6627	6465	2.5%
ARSON TOTAL	12	0.2%	25	-52.0%	44	-72.7%	306	294	4.1%
TOTALS	5022	100.0%	5145	-2.4%	4771	5.3%	51926	49972	3.9%
VIOLENT PROPERTY	593	11.8%	625	-5.1%	730	-18.8%	6932	7284	-4.8%
PROPERTY	4429	88.2%	4520	-2.0%	4041	9.6%	44994	42688	5.4%

*NOTE: These totals include offenses reported to the Charlotte-Mecklenburg Police Department in accordance with the Uniform Crime Reporting (UCR) Program. Because the data in this report is based on the automated Records Management System, cases counted this month may include incidents from previous months that were not reclassified until after investigation. Totals do not include cases classed as justifiable homicides by UCR rules (See the glossary at the end of this report for the UCR definition of justifiable homicide).

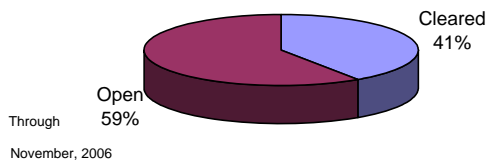


INDEX CLEARANCES REPORTED BY THE CHARLOTTE-MECKLENBURG POLICE DEPARTMENT

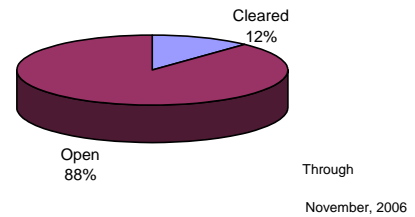
November, 2006 INDEX CLEARANCES	THIS MONTH:		LAST MONTH:		SAME MO. LAST YR:		THIS YEAR TO DATE:		LAST YEAR TO DATE:	
	NO.	%	NO.	%	NO.	%	NO.	%	NO.	%
MURDER & NON-NEGLIGENT MANSLAUGHTER ¹	7	50.0%	5	45.5%	5	71.4%	48	63.2%	46	59.0%
RAPE TOTAL	26	89.7%	27	73.0%	30	100.0%	242	73.3%	251	81.5%
ACTUAL	26	92.9%	25	78.1%	29	103.6%	224	74.4%	217	74.6%
ATTEMPT	0	0.0%	2	40.0%	1	50.0%	18	62.1%	18	105.9%
ROBBERY TOTAL	49	17.3%	85	33.6%	62	17.6%	774	26.6%	694	21.2%
ARMED	36	15.4%	68	30.5%	45	15.0%	602	25.7%	538	20.0%
STRONG-ARM	13	26.0%	17	56.7%	17	32.7%	172	30.5%	156	27.2%
AGGRAVATED ASSAULT TOTAL	132	49.6%	123	38.0%	169	49.7%	1745	48.3%	1811	49.9%
BURGLARY TOTAL	112	8.5%	109	8.6%	84	6.6%	1043	8.4%	1348	11.8%
RESIDENTIAL	88	9.7%	92	10.6%	57	7.7%	774	9.4%	943	12.8%
COMMERCIAL	24	5.8%	17	4.3%	27	5.2%	269	6.5%	415	10.2%
LARCENY TOTAL	312	12.4%	323	12.5%	340	15.5%	3545	13.8%	3571	14.6%
FROM AUTO	17	1.2%	46	3.2%	23	2.1%	413	3.0%	444	3.6%
BICYCLE	1	7.1%	2	11.1%	2	13.3%	19	7.8%	33	14.6%
SHOPLIFTING	137	59.1%	121	57.6%	194	74.3%	1509	62.9%	1636	68.3%
OTHERS	157	17.8%	154	16.3%	121	14.8%	1574	16.7%	1458	15.2%
VEHICLE THEFT TOTAL	74	12.7%	78	12.2%	93	17.3%	735	11.1%	1039	16.1%
ARSON TOTAL	6	50.0%	7	28.0%	2	4.5%	82	26.8%	63	21.4%
TOTALS	718	14.3%	757	14.7%	785	16.5%	8214	15.8%	8823	17.7%
VIOLENT PROPERTY	214	36.1%	240	38.4%	266	36.4%	2809	40.5%	2802	38.5%
	504	11.4%	517	11.4%	519	12.8%	5405	12.0%	6021	14.1%

¹NOTE : Clearances are reported in accordance with Uniform Crime Report guidelines. Since clearances are not counted for UCR until they are entered in the Records Management system, any delays in entry of the documentation may result in some clearances being reported later in succeeding months. The 2006 year-to-date clearance rate for Homicide does not yet take into account the adjustment for some cold case clearances that cannot be automatically counted and will be manually added in the final 2006 report.

**Year-to-Date Violent Index Clearance Rate
Charlotte-Mecklenburg Police Department: 2006**

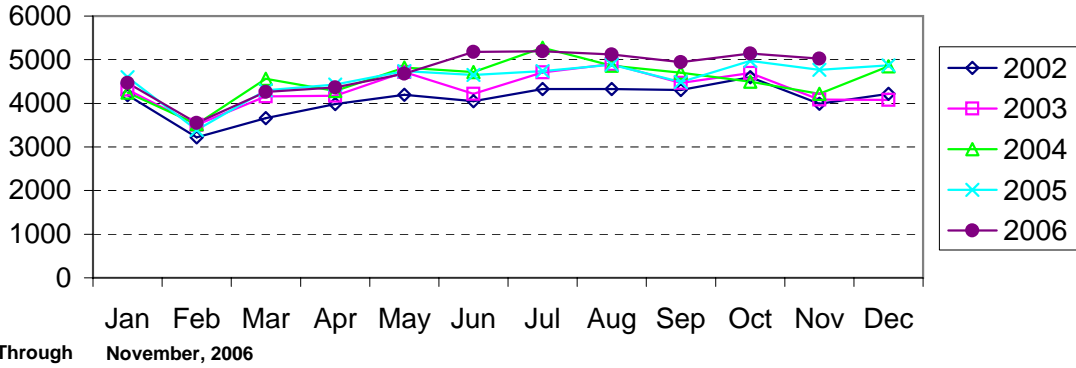


**Year-to-Date Property Index Clearance Rate
Charlotte-Mecklenburg Police Department: 2006**

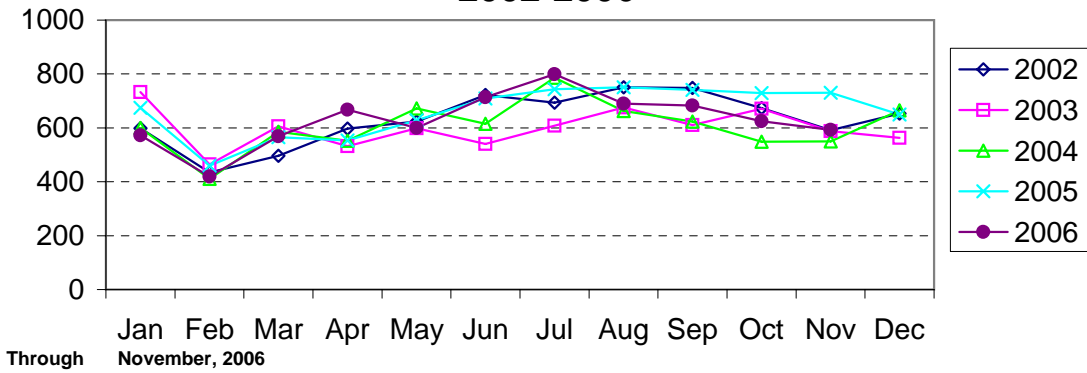


Clearance rates for crime reporting are calculated by dividing the number of crimes cleared during a designated time span by the number of crimes reported in the same period and converting the result to a percentage (multiplying by 100). Since cases from previous reporting periods can be cleared during the designated time span, the rate may be higher than 100%.

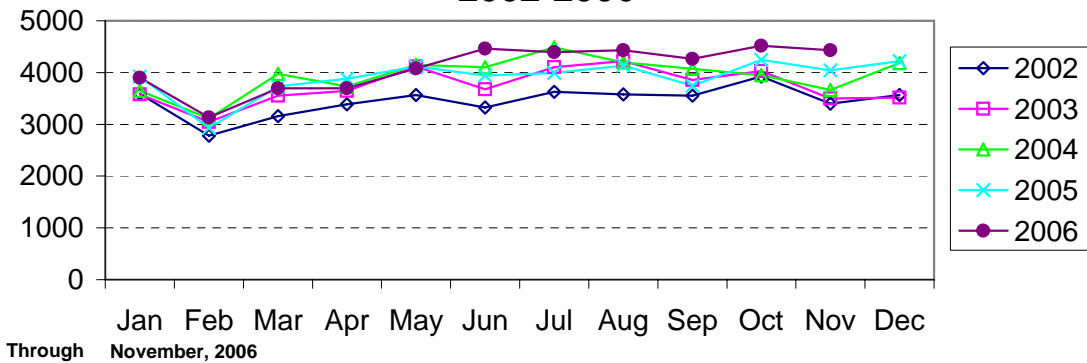
Index Offenses Reported by Month Charlotte-Mecklenburg Police Department: 2002-2006



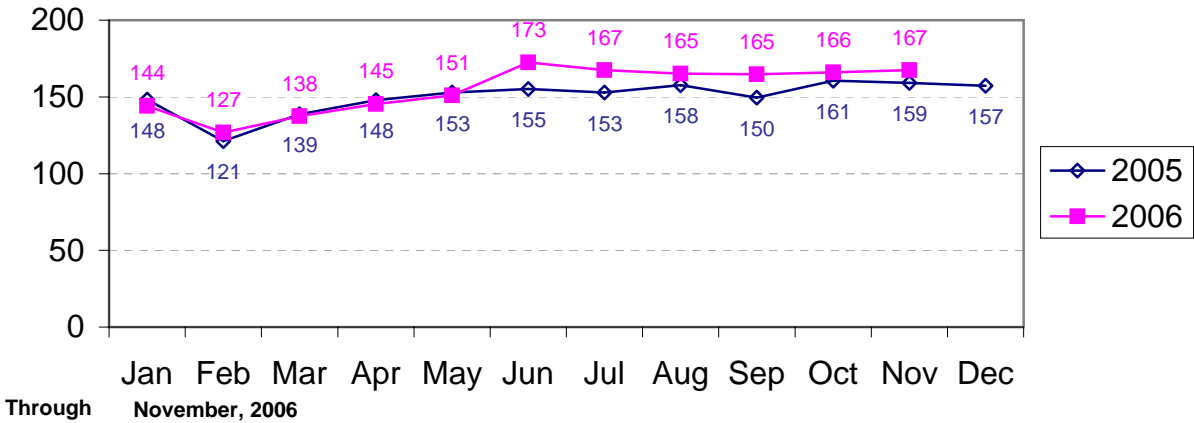
Violent Index Offenses Reported by Month Charlotte-Mecklenburg Police Department: 2002-2006



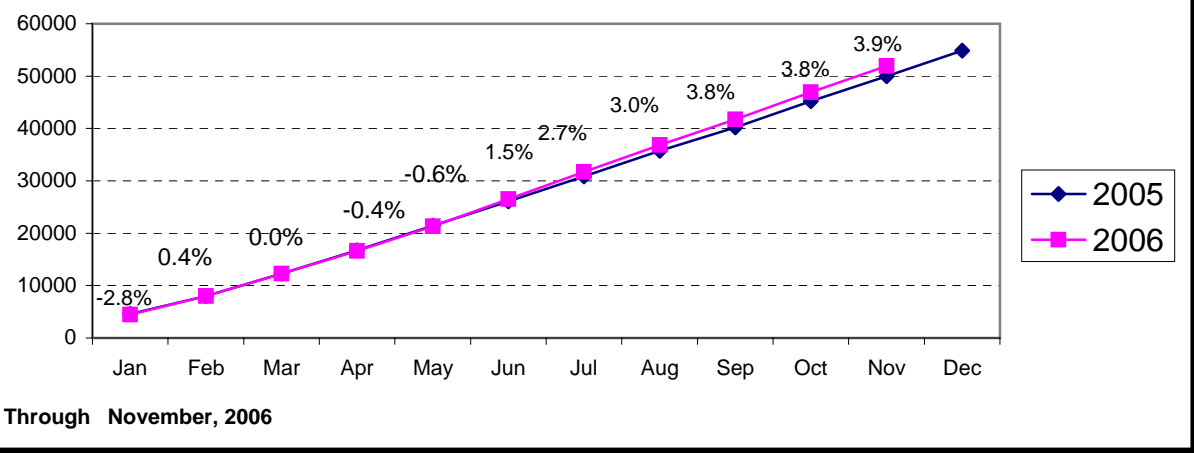
Property Index Offenses Reported by Month Charlotte-Mecklenburg Police Department: 2002-2006



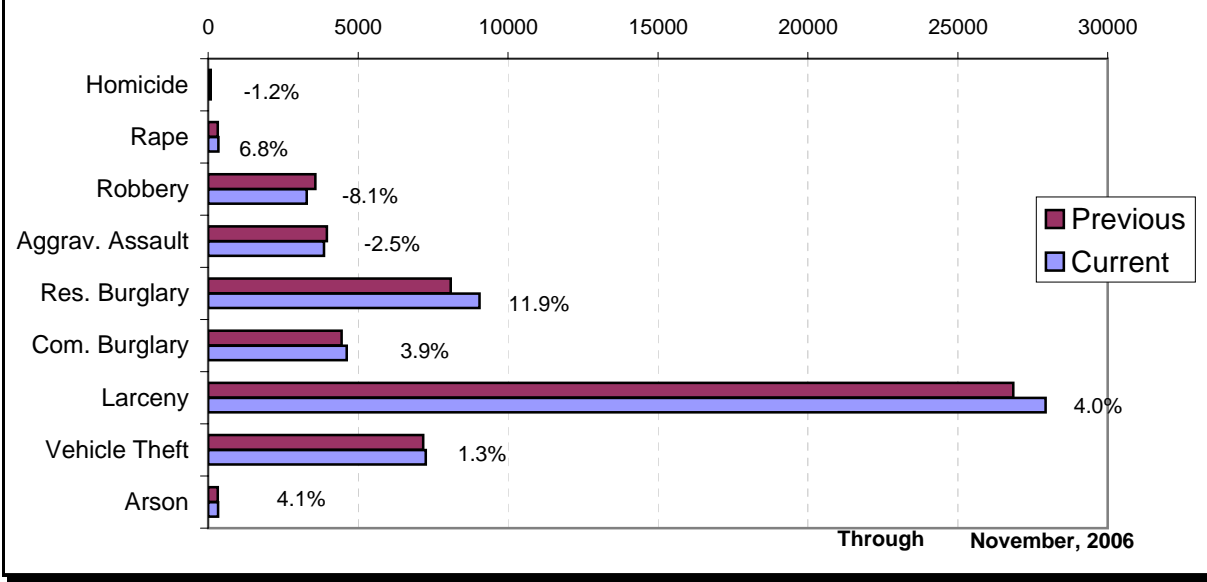
Index Offense Per Day Average by Month Charlotte-Mecklenburg Police Department: 2005-2006



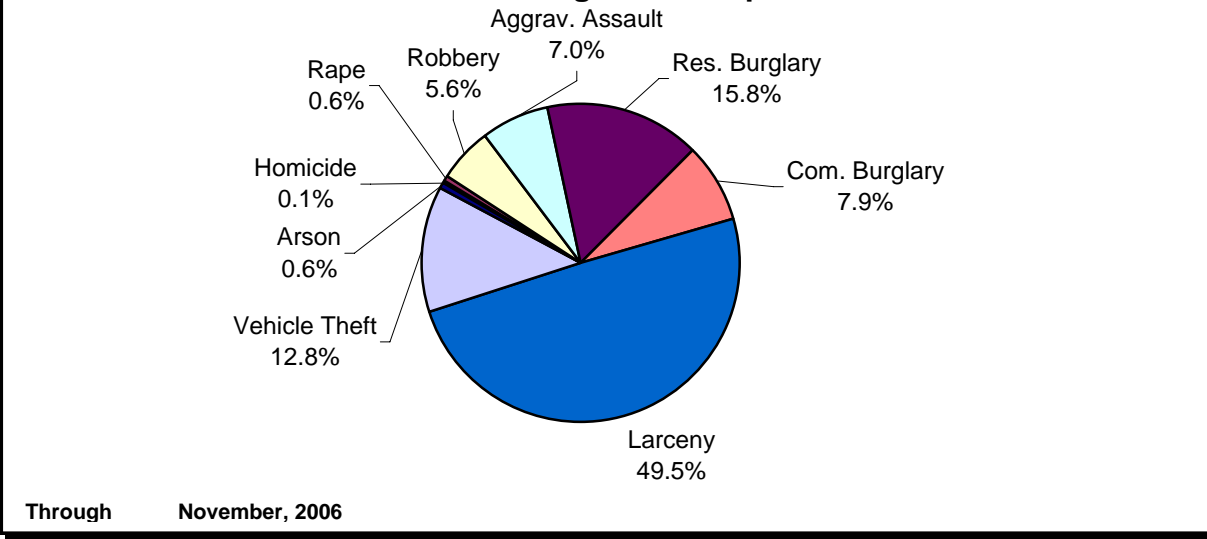
Index Offenses Year-to-Date Cumulative Totals Charlotte-Mecklenburg Police Department: 2005-2006



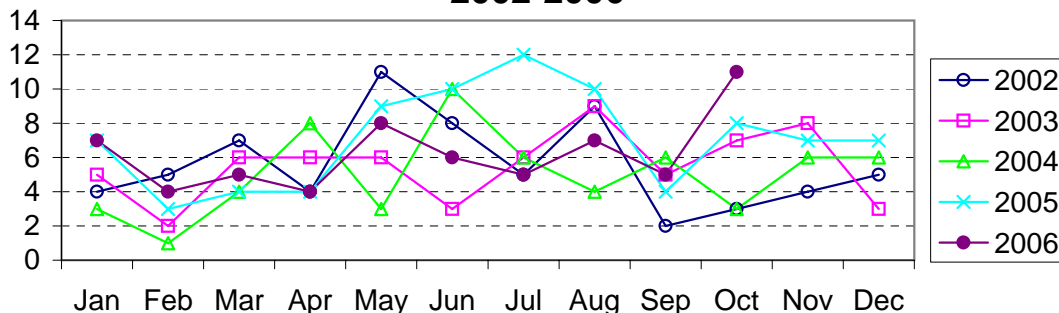
Index Offenses in Current & Previous 12 Month Periods Charlotte-Mecklenburg Police Department



Year-to-Date Index Offenses by Type Charlotte-Mecklenburg Police Department: 2006



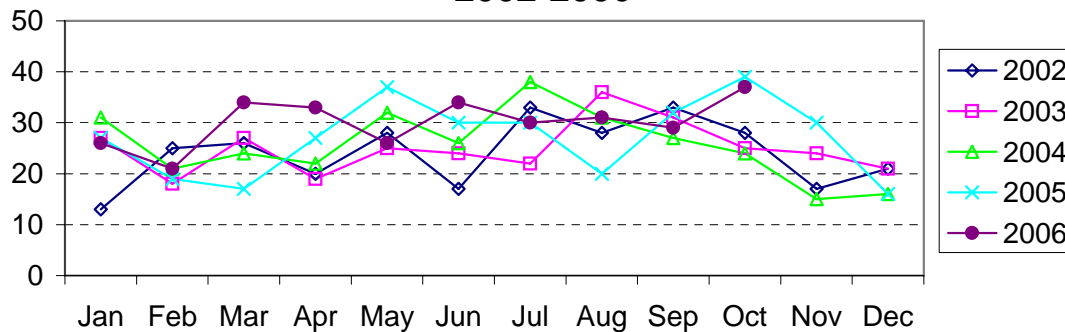
Homicide Reported by Month Charlotte-Mecklenburg Police Department: 2002-2006



Note: These totals reflect the month that the cases were classed as homicide in the automated Records Management System, not the month of occurrence.

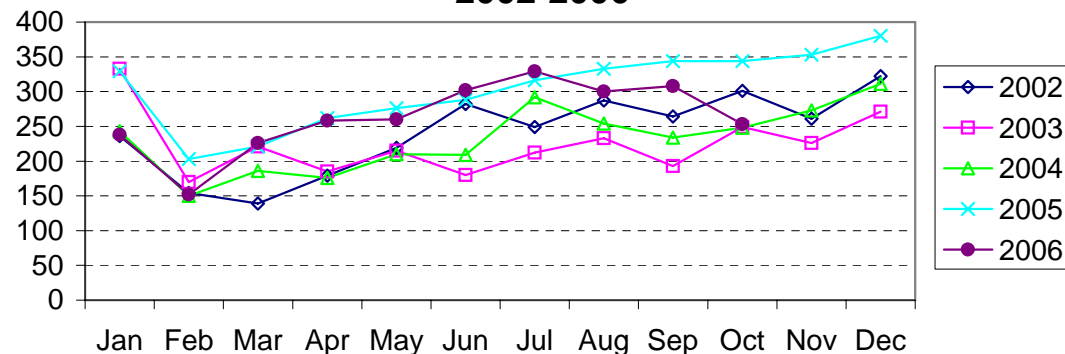
Through November, 2006

Rape Reported by Month Charlotte-Mecklenburg Police Department: 2002-2006



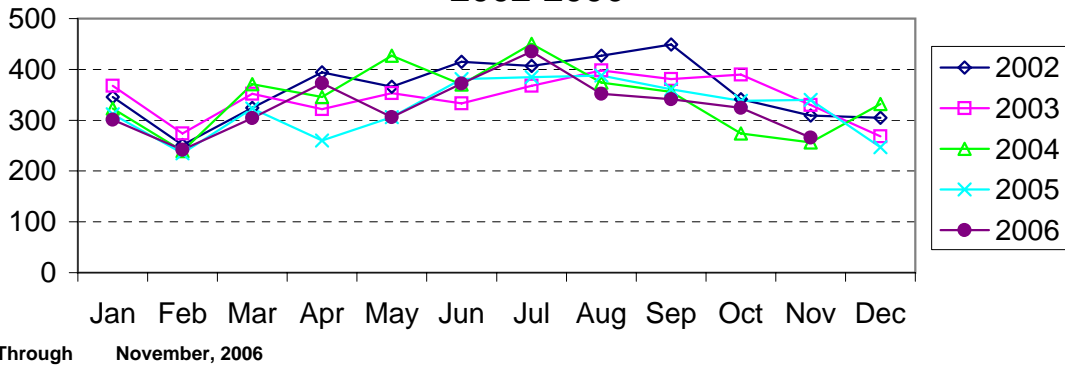
Through November, 2006

Robbery Reported by Month Charlotte-Mecklenburg Police Department: 2002-2006

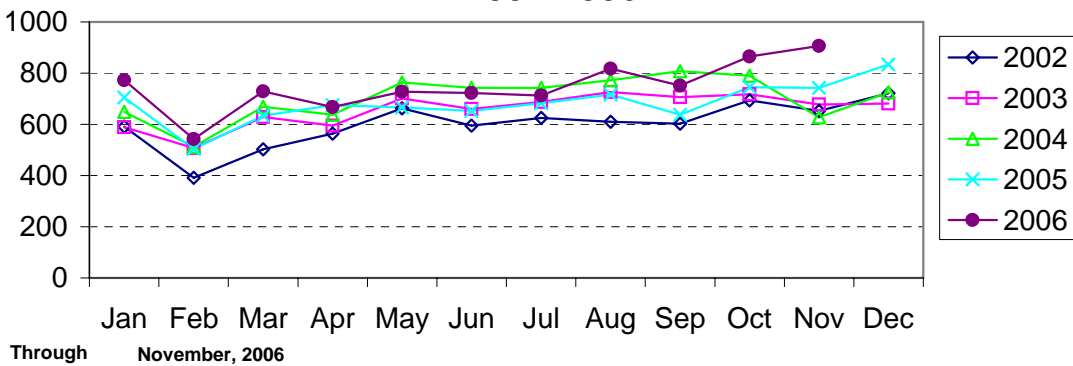


Through November, 2006

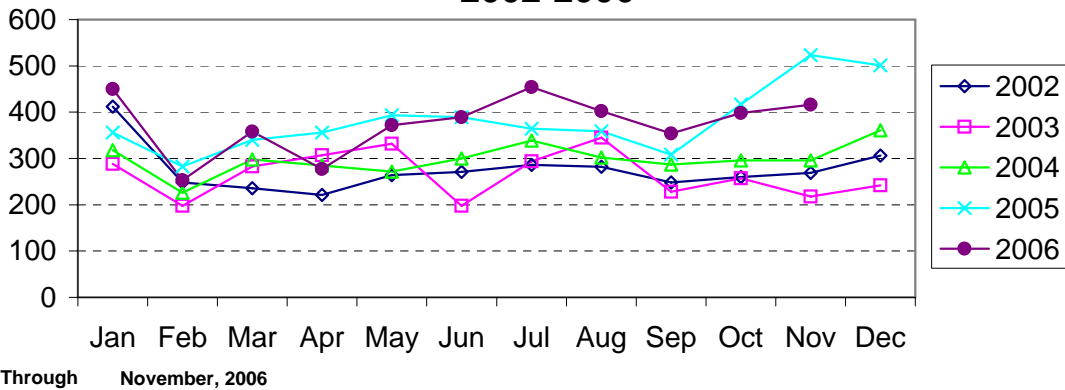
**Aggravated Assault Reported by Month
Charlotte-Mecklenburg Police Department:
2002-2006**



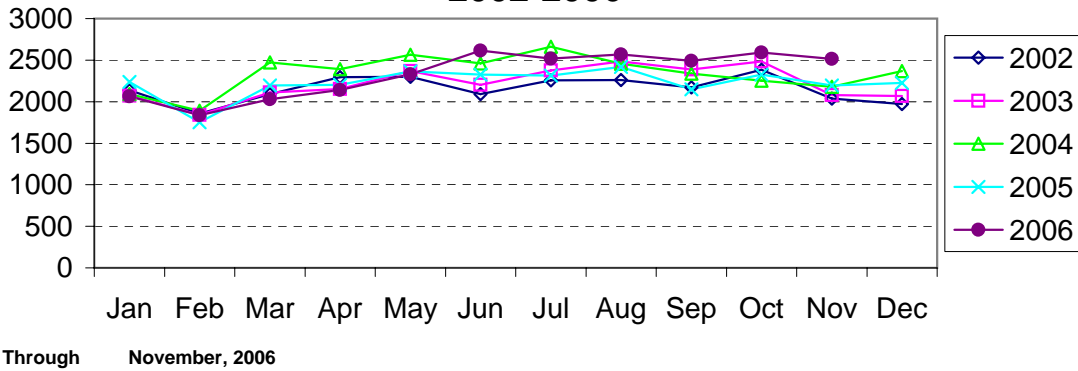
**Residential Burglary Reported by Month
Charlotte-Mecklenburg Police Department:
2002-2006**



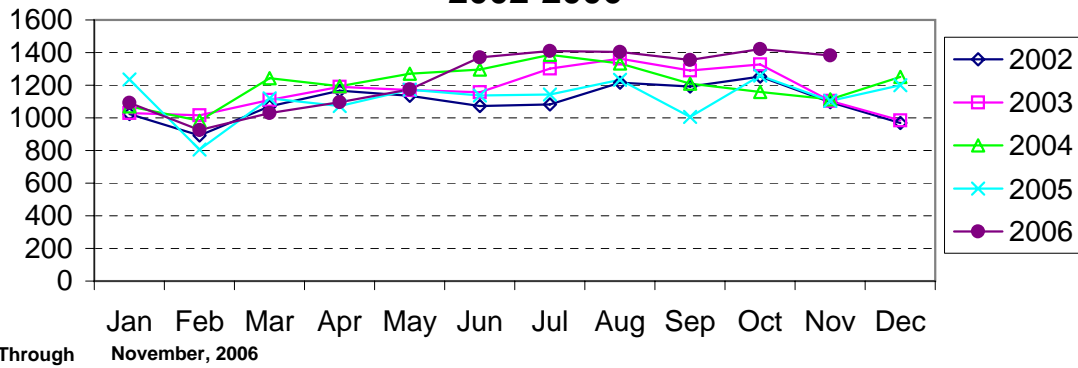
**Commercial Burglary Reported by Month
Charlotte-Mecklenburg Police Department:
2002-2006**



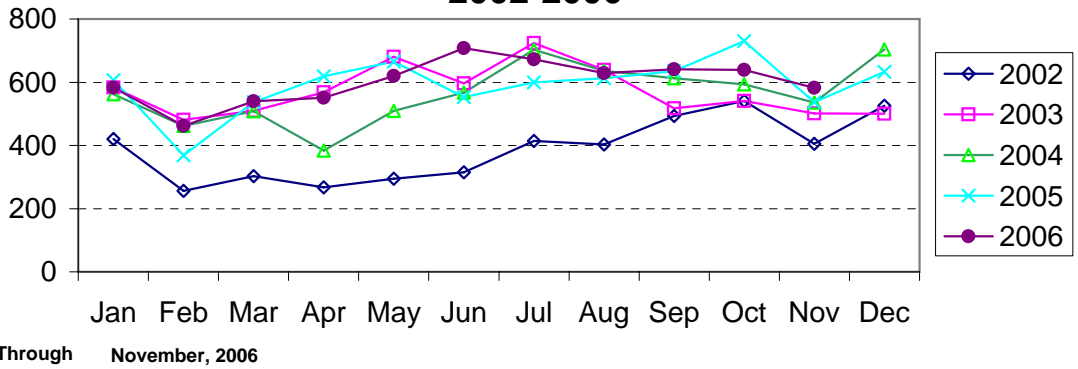
Larceny Reported by Month Charlotte-Mecklenburg Police Department: 2002-2006



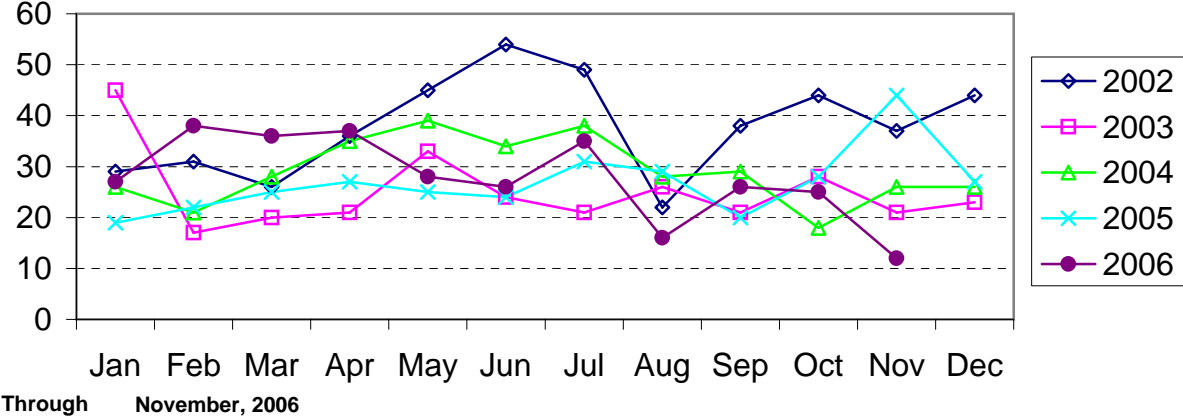
Larceny from Vehicle Reported by Month Charlotte-Mecklenburg Police Department: 2002-2006



Vehicle Theft Reported by Month Charlotte-Mecklenburg Police Department: 2002-2006



Arson Reported by Month Charlotte-Mecklenburg Police Department: 2002-2006



Index Offenses Reported by Division and Service Area of Occurrence									
West Service Area: November, 2005-2006									
INDEX_CATEGORIES	Westover (A2)			Freedom (A3)			West Service Area		
	2005	2006	% Change	2005	2006	% Change	2005	2006	% Change
MURDER & NON-NEGLIGENT MANSLAUGHTER	6	5	-16.7%	12	7	-41.7%	18	12	-33.3%
RAPE	22	28	27.3%	34	37	8.8%	56	65	16.1%
ACTUAL	21	26	23.8%	32	35	9.4%	53	61	15.1%
ATTEMPTED	1	2	100.0%	2	2	0.0%	3	4	33.3%
ROBBERY	286	274	-4.2%	443	347	-21.7%	729	621	-14.8%
ARMED	234	212	-9.4%	387	284	-26.6%	621	496	-20.1%
STRONG-ARM	52	62	19.2%	56	63	12.5%	108	125	15.7%
AGGRAVATED ASSAULT	434	516	18.9%	431	508	17.9%	865	1024	18.4%
BURGLARY	963	882	-8.4%	1519	1613	6.2%	2482	2495	0.5%
RESIDENTIAL	544	568	4.4%	920	973	5.8%	1464	1541	5.3%
COMMERCIAL	419	314	-25.1%	599	640	6.8%	1018	954	-6.3%
LARCENY	1566	1641	4.8%	2254	2675	18.7%	3820	4316	13.0%
FROM AUTO	751	763	1.6%	969	1284	32.5%	1720	2047	19.0%
BICYCLE	6	24	300.0%	17	18	5.9%	23	42	82.6%
SHOPLIFTING	119	178	49.6%	249	272	9.2%	368	450	22.3%
OTHERS	690	676	-2.0%	1019	1101	8.0%	1709	1777	4.0%
VEHICLE THEFT	466	580	24.5%	651	747	14.7%	1117	1327	18.8%
ARSON	29	19	-34.5%	45	45	0.0%	74	64	-13.5%
TOTALS	3772	3945	4.6%	5389	5979	10.9%	9161	9924	8.3%
VIOLENT	748	823	10.0%	920	899	-2.3%	1668	1722	3.2%
PROPERTY	3024	3122	3.2%	4469	5080	13.7%	7493	8202	9.5%

Index Offenses Reported by Division and Service Area of Occurrence									
Southeast Service Area: November, 2005-2006									
INDEX_CATEGORIES	Providence (B1)			Independence (B3)			Southeast Service Area		
	2005	2006	% Change	2005	2006	% Change	2005	2006	% Change
MURDER & NON-NEGLIGENT MANSLAUGHTER	4	6	50.0%	4	4	0.0%	8	10	25.0%
RAPE	17	18	5.9%	24	31	29.2%	41	49	19.5%
ACTUAL	16	16	0.0%	22	28	27.3%	38	44	15.8%
ATTEMPTED	1	2	100.0%	2	3	50.0%	3	5	66.7%
ROBBERY	112	123	9.8%	276	261	-5.4%	388	384	-1.0%
ARMED	89	82	-7.9%	234	226	-3.4%	323	308	-4.6%
STRONG-ARM	23	41	78.3%	42	35	-16.7%	65	76	16.9%
AGGRAVATED ASSAULT	124	125	0.8%	275	246	-10.5%	399	371	-7.0%
BURGLARY	853	825	-3.3%	890	1092	22.7%	1743	1917	10.0%
RESIDENTIAL	569	517	-9.1%	669	882	31.8%	1238	1399	13.0%
COMMERCIAL	284	308	8.5%	221	210	-5.0%	505	518	2.6%
LARCENY	1789	1957	9.4%	2165	2002	-7.5%	3954	3959	0.1%
FROM AUTO	821	1012	23.3%	1160	984	-15.2%	1981	1996	0.8%
BICYCLE	22	23	4.5%	17	25	47.1%	39	48	23.1%
SHOPLIFTING	223	231	3.6%	239	206	-13.8%	462	437	-5.4%
OTHERS	723	691	-4.4%	749	787	5.1%	1472	1478	0.4%
VEHICLE THEFT	291	328	12.7%	672	608	-9.5%	963	936	-2.8%
ARSON	10	10	0.0%	28	16	-42.9%	38	26	-31.6%
TOTALS	3200	3392	6.0%	4334	4260	-1.7%	7534	7652	1.6%
VIOLENT	257	272	5.8%	579	542	-6.4%	836	814	-2.6%
PROPERTY	2943	3120	6.0%	3755	3718	-1.0%	6698	6838	2.1%

The data in the district breakdowns does not include a small number of offenses in which the offense location (or reporting location if offense location was unknown) was entered without one of the 12 valid division assignments. Districts are not equal in geographic size, demographics, zoning/development, and other factors that influence the rate of crimes committed in an area. Therefore, the comparison of raw offense totals across districts is **not** advisable.

Index Offenses Reported by Division and Service Area of Occurrence									
Northeast Service Area: November, 2005-2006									
INDEX_CATEGORIES	North (C1)			Hickory Grove (C3)			Northeast Service Area		
	2005	2006	% Change	2005	2006	% Change	2005	2006	% Change
MURDER & NON-NEGLIGENT MANSLAUGHTER	11	7	-36.4%	9	9	0.0%	20	16	-20.0%
RAPE	38	59	55.3%	38	26	-31.6%	76	85	11.8%
ACTUAL	34	57	67.6%	35	22	-37.1%	69	79	14.5%
ATTEMPTED	4	2	-50.0%	3	4	33.3%	7	6	-14.3%
ROBBERY	254	341	34.3%	318	303	-4.7%	572	644	12.6%
ARMED	216	298	38.0%	259	242	-6.6%	475	540	13.7%
STRONG-ARM	38	43	13.2%	56	61	8.9%	94	104	10.6%
AGGRAVATED ASSAULT	332	319	-3.9%	388	338	-12.9%	720	657	-8.8%
BURGLARY	1412	1973	39.7%	1448	1683	16.2%	2860	3656	27.8%
RESIDENTIAL	935	1395	49.2%	925	1136	22.8%	1860	2531	36.1%
COMMERCIAL*	477	578	21.2%	523	547	4.6%	1000	1125	12.5%
LARCENY	4120	4333	5.2%	1879	1769	-5.9%	5999	6102	1.7%
FROM AUTO	2251	2453	9.0%	1023	961	-6.1%	3274	3414	4.3%
BICYCLE	28	63	125.0%	31	29	-6.5%	59	92	55.9%
SHOPLIFTING	368	406	10.3%	152	113	-25.7%	520	519	-0.2%
OTHERS	1473	1411	-4.2%	673	666	-1.0%	2146	2077	-3.2%
VEHICLE THEFT	898	967	7.7%	703	680	-3.3%	1601	1647	2.9%
ARSON	41	44	7.3%	36	33	-8.3%	77	77	0.0%
TOTALS	7106	8043	13.2%	4819	4841	0.5%	11925	12884	8.0%
VIOLENT	635	726	14.3%	753	676	-10.2%	1388	1402	1.0%
PROPERTY	6471	7317	13.1%	4066	4165	2.4%	10537	11482	9.0%

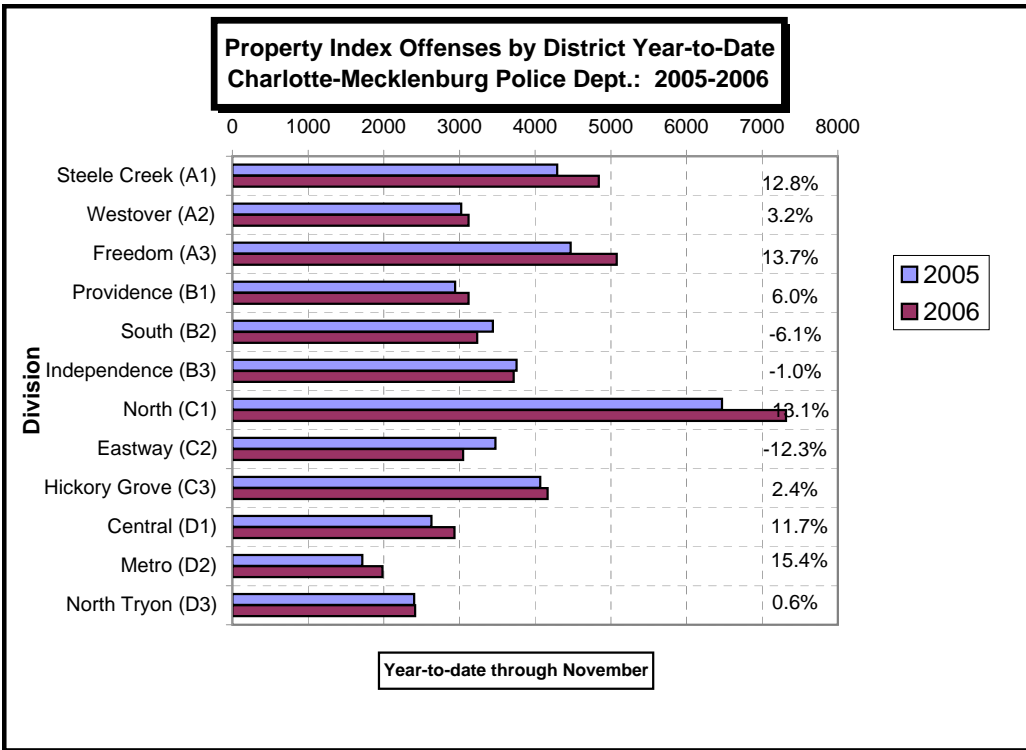
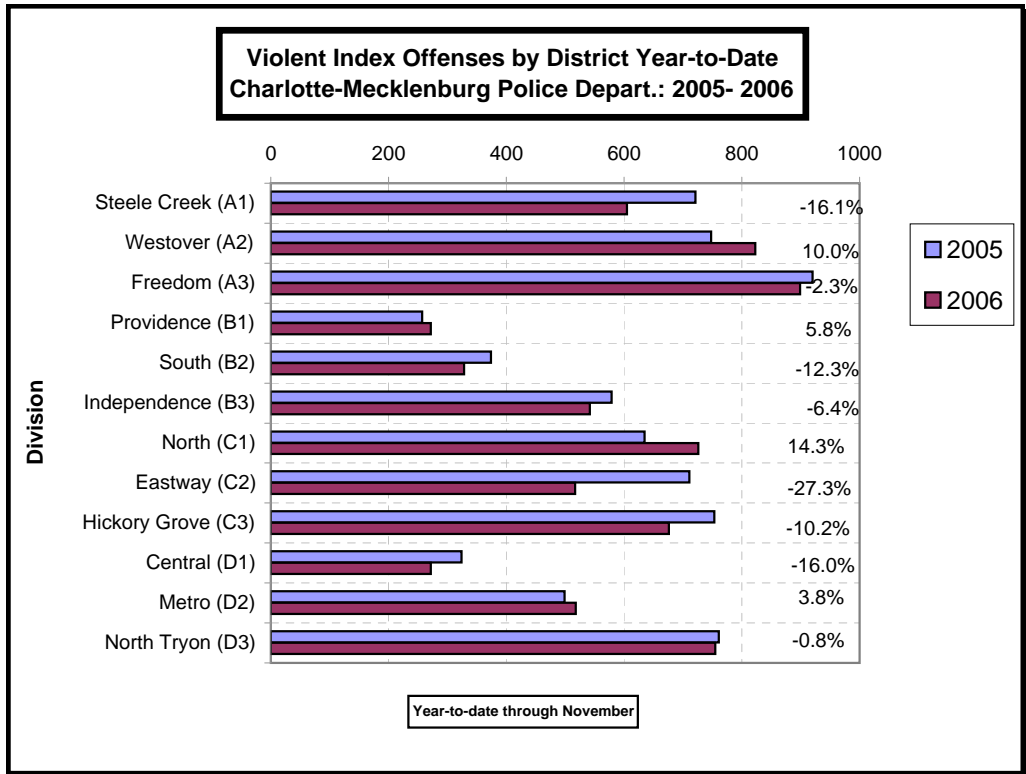
Index Offenses Reported by Division and Service Area of Occurrence									
Central Service Area: November, 2005-2006									
INDEX_CATEGORIES	Central (D1)			Metro (D2)			Central Service Area		
	2005	2006	% Change	2005	2006	% Change	2005	2006	% Change
MURDER & NON-NEGLIGENT MANSLAUGHTER	4	5	25.0%	7	9	28.6%	11	14	27.3%
RAPE	35	27	-22.9%	14	20	42.9%	49	47	-4.1%
ACTUAL	34	26	-23.5%	15	20	33.3%	49	46	-6.1%
ATTEMPTED	1	1	0.0%	-1	0	-100.0%	0	1	NA
ROBBERY	160	129	-19.4%	187	152	-18.7%	347	281	-19.0%
ARMED	101	87	-13.9%	147	111	-24.5%	248	198	-20.2%
STRONG-ARM	59	42	-28.8%	40	41	2.5%	99	83	-16.2%
AGGRAVATED ASSAULT	125	111	-11.2%	291	337	15.8%	416	448	7.7%
BURGLARY	359	340	-5.3%	554	625	12.8%	913	965	5.7%
RESIDENTIAL	124	134	8.1%	411	401	-2.4%	535	535	0.0%
COMMERCIAL	235	206	-12.3%	143	224	56.6%	378	430	13.8%
LARCENY	1900	2180	14.7%	803	967	20.4%	2703	3147	16.4%
FROM AUTO	1016	1247	22.7%	364	472	29.7%	1380	1719	24.6%
BICYCLE	34	26	-23.5%	10	7	-30.0%	44	33	-25.0%
SHOPLIFTING	64	88	37.5%	28	39	39.3%	92	127	38.0%
OTHERS	786	819	4.2%	401	449	12.0%	1187	1268	6.8%
VEHICLE THEFT	369	401	8.7%	340	371	9.1%	709	772	8.9%
ARSON	0	15	NA	19	18	-5.3%	19	33	73.7%
TOTALS	2952	3208	8.7%	2215	2499	12.8%	5167	5707	10.5%
VIOLENT	324	272	-16.0%	499	518	3.8%	823	790	-4.0%
PROPERTY	2628	2936	11.7%	1716	1981	15.4%	4344	4917	13.2%

The data in the district breakdowns does not include a small number of offenses in which the offense location (or reporting location if offense location was unknown) was entered without one of the 12 valid division assignments. Districts are not equal in geographic size, demographics, zoning/development, and other factors that influence the rate of crimes committed in an area. Therefore, the comparison of raw offense totals across districts is **not** advisable.

Index Offenses Reported by Division and Service Area of Occurrence									
East Service Area: November, 2005-2006									
INDEX_CATEGORIES	Eastway (C2)			North Tryon (D3)			East Service Area		
	2005	2006	% Change	2005	2006	% Change	2005	2006	% Change
MURDER & NON-NEGLIGENT MANSLAUGHTER	7	3	-57.1%	6	11	83.3%	13	14	7.7%
RAPE	24	25	4.2%	9	15	66.7%	33	40	21.2%
ACTUAL	23	22	-4.3%	8	14	75.0%	31	36	16.1%
ATTEMPTED	1	3	200.0%	1	1	0.0%	2	4	100.0%
ROBBERY	418	278	-33.5%	326	306	-6.1%	744	584	-21.5%
ARMED	342	226	-33.9%	271	251	-7.4%	613	477	-22.2%
STRONG-ARM	76	52	-31.6%	55	55	0.0%	131	107	-18.3%
AGGRAVATED ASSAULT	262	211	-19.5%	420	423	0.7%	682	634	-7.0%
BURGLARY	974	837	-14.1%	801	828	3.4%	1775	1665	-6.2%
RESIDENTIAL	721	609	-15.5%	473	513	8.5%	1194	1122	-6.0%
COMMERCIAL	253	228	-9.9%	331	315	-4.8%	584	543	-7.0%
LARCENY	1996	1709	-14.4%	1172	1127	-3.8%	3168	2836	-10.5%
FROM AUTO	759	740	-2.5%	571	560	-1.9%	1330	1300	-2.3%
BICYCLE	24	53	120.8%	7	11	57.1%	31	64	106.5%
SHOPLIFTING	481	319	-33.7%	63	68	7.9%	544	387	-28.9%
OTHERS	732	597	-18.4%	531	488	-8.1%	1263	1085	-14.1%
VEHICLE THEFT	483	490	1.4%	416	441	6.0%	899	931	3.6%
ARSON	21	11	-47.6%	11	19	72.7%	32	30	-6.3%
TOTALS	4185	3564	-14.8%	3161	3170	0.3%	7346	6734	-8.3%
VIOLENT PROPERTY	711 3474	517 3047	-27.3% -12.3%	761 2400	755 2415	-0.8% 0.6%	1472 5874	1272 5462	-13.6% -7.0%

Index Offenses Reported by Division and Service Area of Occurrence									
South Service Area: November, 2005-2006									
INDEX_CATEGORIES	Steele Creek (A1)			South (B2)			South Service Area		
	2005	2006	% Change	2005	2006	% Change	2005	2006	% Change
MURDER & NON-NEGLIGENT MANSLAUGHTER	8	6	-25.0%	0	4	NA	8	10	25.0%
RAPE	34	32	-5.9%	17	12	-29.4%	51	44	-13.7%
ACTUAL	32	26	-18.8%	17	9	-47.1%	49	35	-28.6%
ATTEMPTED	2	6	200.0%	0	3	NA	2	9	350.0%
ROBBERY	303	264	-12.9%	186	132	-29.0%	489	396	-19.0%
ARMED	256	220	-14.1%	159	107	-32.7%	415	327	-21.2%
STRONG-ARM	47	44	-6.4%	27	25	-7.4%	74	69	-6.8%
AGGRAVATED ASSAULT	376	303	-19.4%	171	180	5.3%	547	483	-11.7%
BURGLARY	844	938	11.1%	830	718	-13.5%	1674	1656	-1.1%
RESIDENTIAL	506	588	16.2%	565	515	-8.8%	1071	1103	3.0%
COMMERCIAL	338	350	3.6%	265	203	-23.4%	603	553	-8.3%
LARCENY	2680	3232	20.6%	2153	2099	-2.5%	4833	5331	10.3%
FROM AUTO	1417	1957	38.1%	1183	1220	3.1%	2600	3177	22.2%
BICYCLE	16	19	18.8%	14	17	21.4%	30	36	20.0%
SHOPLIFTING	246	224	-8.9%	165	184	11.5%	411	408	-0.7%
OTHERS	1001	1032	3.1%	791	678	-14.3%	1792	1710	-4.6%
VEHICLE THEFT	740	635	-14.2%	432	376	-13.0%	1172	1011	-13.7%
ARSON	27	36	33.3%	27	40	48.1%	54	76	40.7%
TOTALS	5012	5446	8.7%	3816	3561	-6.7%	8828	9007	2.0%
VIOLENT PROPERTY	721 4291	605 4841	-16.1% 12.8%	374 3442	328 3233	-12.3% -6.1%	1095 7733	933 8074	-14.8% 4.4%

The data in the district breakdowns does not include a small number of offenses in which the offense location (or reporting location if offense location was unknown) was entered without one of the 12 valid division assignments. Districts are not equal in geographic size, demographics, zoning/development, and other factors that influence the rate of crimes committed in an area. Therefore, the comparison of raw offense totals across districts is **not** advisable.



The data in the district breakdowns does not include a small number of offenses in which the offense location (or reporting location if offense location was unknown) was entered without one of the 12 valid division assignments. Districts are not equal in geographic size, demographics, zoning/development, and other factors that influence the rate of crimes committed in an area. Therefore, the comparison of raw offense totals across districts is **not** advisable.

Arrests by Charlotte-Mecklenburg Police Department
Year-To-Date: 2005-2006
(Through November)

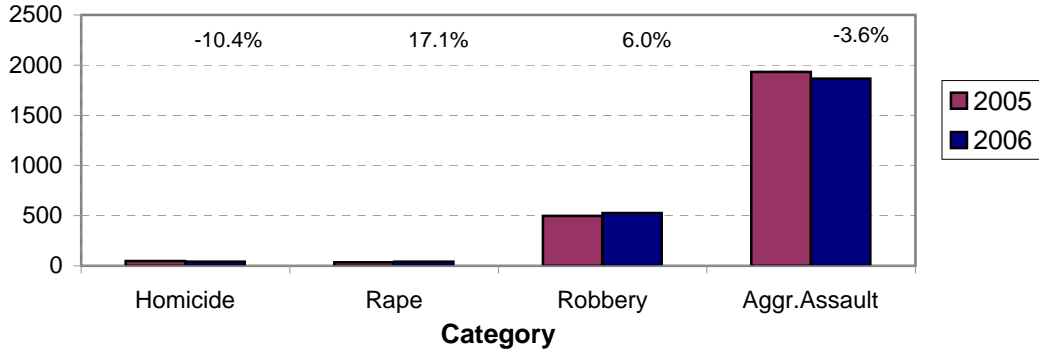
CATEGORY	ADULTS (AGE 18 & OLDER):			JUVENILES (UNDER 18):			TOTAL ARRESTS:		
	2005 Y-T-D	2006 Y-T-D	% CHANGE	2005 Y-T-D	2006 Y-T-D	% CHANGE	2005 Y-T-D	2006 Y-T-D	% CHANGE
Murder/Non-Negligent Manslaughter	45	39	-13.3%	3	4	33.3%	48	43	-10.4%
Negligent & Vehicular Manslaughter	3	1	-66.7%	0	0	NA	3	1	-66.7%
Rape	34	34	0.0%	1	7	600.0%	35	41	17.1%
Robbery	385	368	-4.4%	112	159	42.0%	497	527	6.0%
Aggravated Assault	1669	1613	-3.4%	264	251	-4.9%	1933	1864	-3.6%
Burglary	565	666	17.9%	226	222	-1.8%	791	888	12.3%
Larceny	1436	1287	-10.4%	493	476	-3.4%	1929	1763	-8.6%
Vehicle Theft	84	81	-3.6%	104	81	-22.1%	188	162	-13.8%
Non-Aggravated Assault	1855	1792	-3.4%	694	620	-10.7%	2549	2412	-5.4%
Arson	13	13	0.0%	25	23	-8.0%	38	36	-5.3%
Forgery/Counterfeit	137	148	8.0%	3	0	-100.0%	140	148	5.7%
Fraud	553	524	-5.2%	5	5	0.0%	558	529	-5.2%
Embezzlement	84	90	7.1%	11	12	9.1%	95	102	7.4%
Stolen Property	462	504	9.1%	133	148	11.3%	595	652	9.6%
Vandalism	204	224	9.8%	210	224	6.7%	414	448	8.2%
Weapons	565	734	29.9%	58	111	91.4%	623	845	35.6%
Prostitution	279	180	-35.5%	2	4	100.0%	281	184	-34.5%
Sex Offenses	159	165	3.8%	27	19	-29.6%	186	184	-1.1%
Drugs	2460	2749	11.7%	259	321	23.9%	2719	3070	12.9%
Gambling	8	4	-50.0%	0	0	NA	8	4	-50.0%
Offenses vs. Family	5	4	-20.0%	0	0	NA	5	4	-20.0%
DUI	1893	1768	-6.6%	11	17	54.5%	1904	1785	-6.3%
Liquor	201	204	1.5%	11	7	-36.4%	212	211	-0.5%
Disorder Conduct	478	588	23.0%	295	272	-7.8%	773	860	11.3%
Other Non-Traffic	7264	8208	13.0%	767	966	25.9%	8031	9174	14.2%
VIOLENT INDEX¹	2133	2054	-3.7%	380	421	10.8%	2513	2475	-1.5%
PROPERTY INDEX²	2098	2047	-2.4%	848	802	-5.4%	2946	2849	-3.3%
INDEX SUBTOTAL	4231	4101	-3.1%	1228	1223	-0.4%	5459	5324	-2.5%
PART 2 SUBTOTAL³	16610	17887	7.7%	2486	2726	9.7%	19096	20613	7.9%
TOTAL	20841	21988	5.5%	3714	3949	6.3%	24555	25937	5.6%

¹Violent Index includes murder and non-negligent manslaughter, rape, robbery, and aggravated assault.

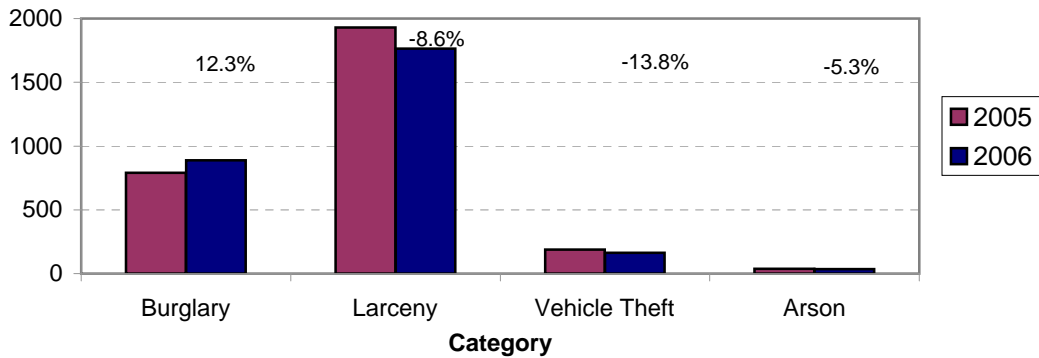
²Property Index includes burglary, larceny, vehicle theft, and arson.

³Part 2 crimes include crime categories not counted in the Index totals.

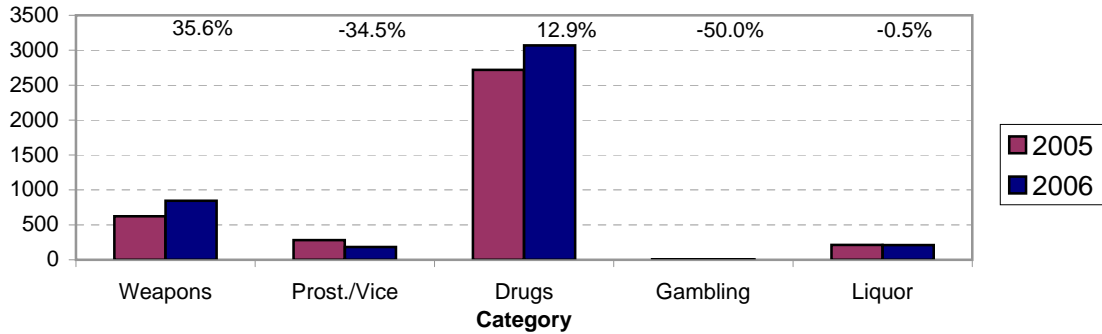
**Violent Index Arrests Year-to-Date
Charlotte-Mecklenburg Police Department: 2005-2006
(Through November)**



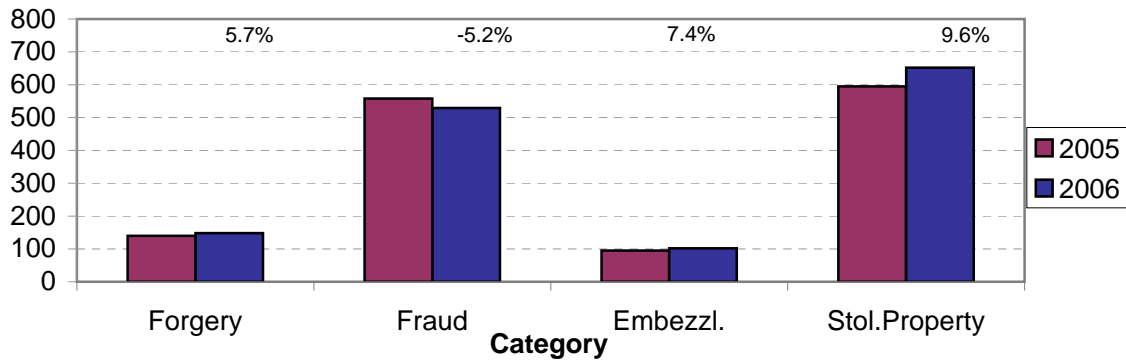
**Property Index Arrests Year-to-Date
Charlotte-Mecklenburg Police Department: 2004-2005
(Through November)**



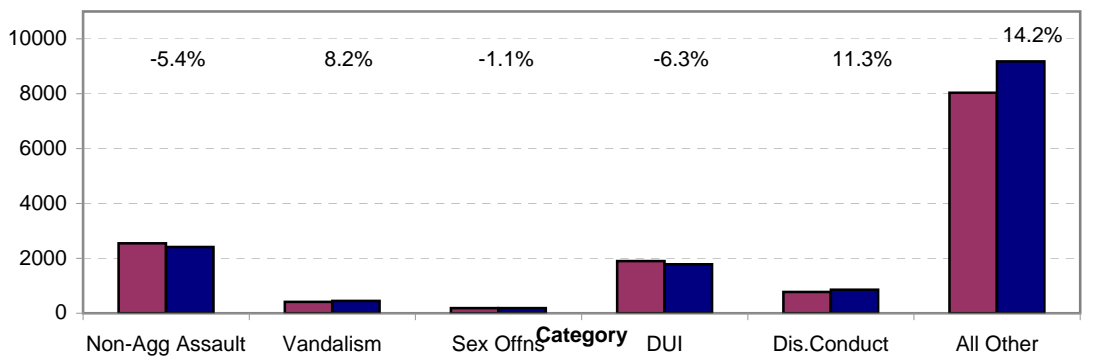
**Arrests for Vice/CCW/Drugs/Etc. Year-to-Date
Charlotte-Mecklenburg Police Department: 2005- 2006
(Through November)**



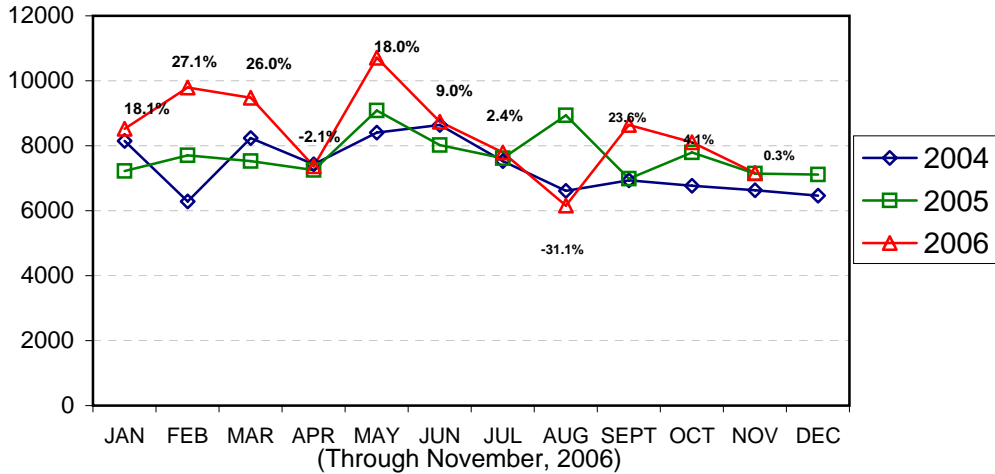
**Arrests for Property/White Collar Crime Year-to-Date
Charlotte-Mecklenburg Police Department: 2005- 2006
(Through November)**



**Arrests for Other Categories Year-to-Date
Charlotte-Mecklenburg Police Department: 2005 - 2006
(Through November)**

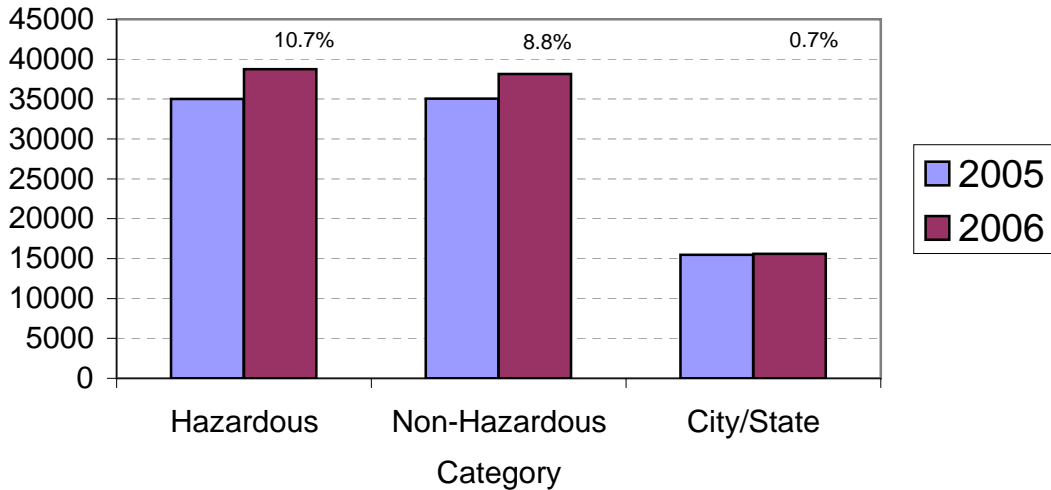


Total Citation Enforcement by Month Charlotte-Mecklenburg Police Dept.: 2004-2006

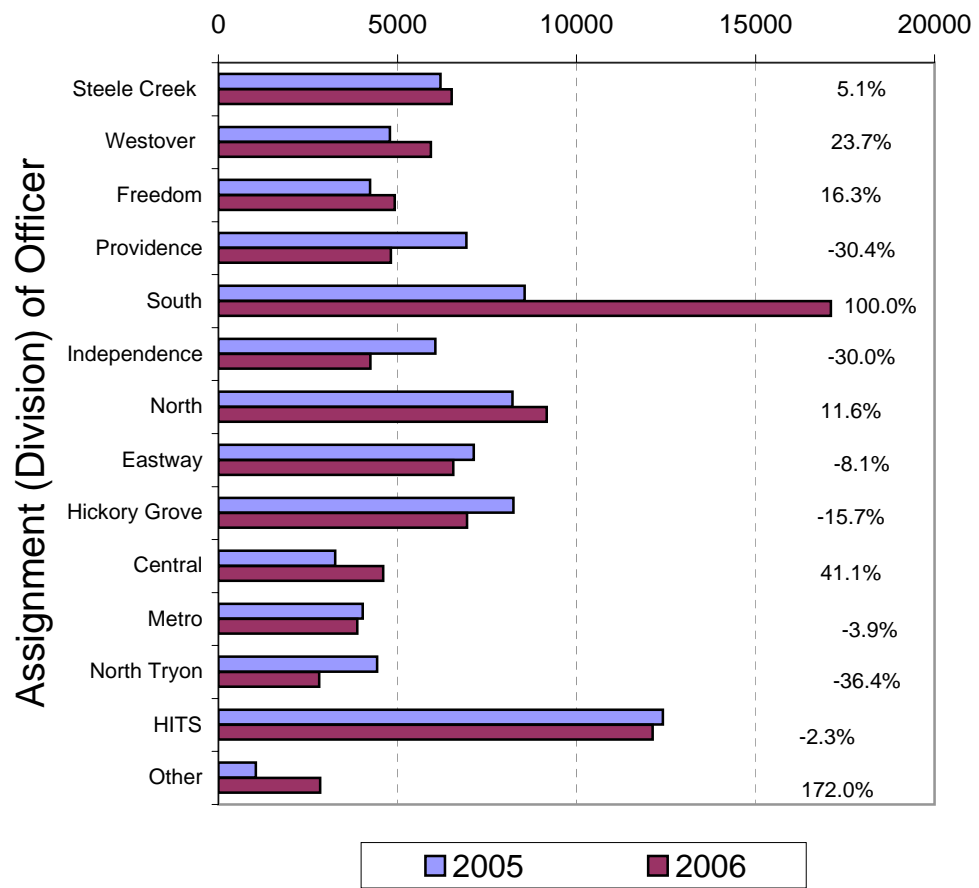


(Includes Hazardous, Non-Hazardous, and City/State Citations; percentages are current month compared to same month in previous year. Percentages are the change from current month to same month in past year. Monthly totals may be affected by data entry delays.)

CMPD Citation Enforcement by Category Year-to-Date, 2005 - 2006 (Through November, 2006)



**Citations Issued Year-to-Date by CMPD Divisions
2005 - 2006
(Through November, 2006)**



**Citations Reported by the Charlotte Mecklenburg Police Year-to-Date
(Through November, 2006)**

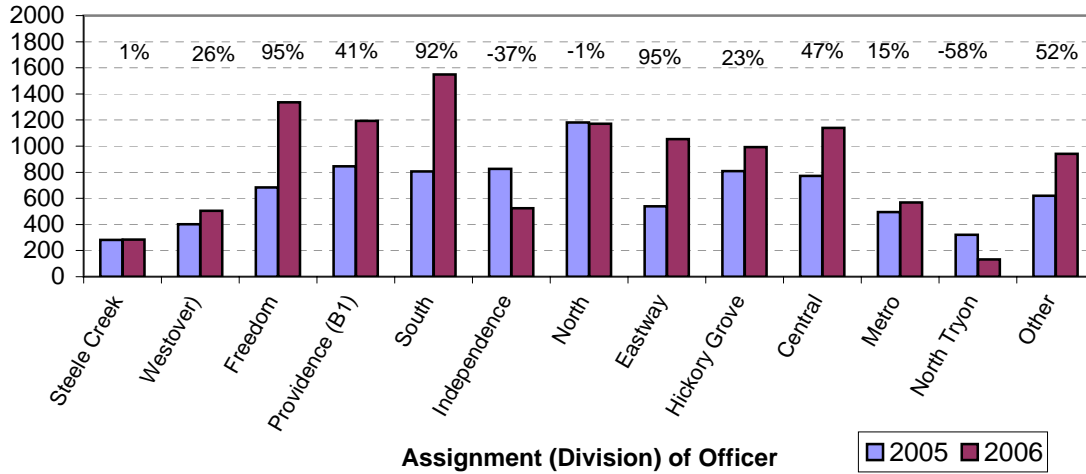
	2005	2006	% Change
Hazardous	34,998	38,738	10.7%
Non-Hazardous	35,054	38,149	8.8%
Other City/State Statute/Ordinance	15,493	15,594	0.7%
Total	85,545	92,481	8.1%

**"Safe Speed" Program: 2005-2006
(Through May 26, 2006)**

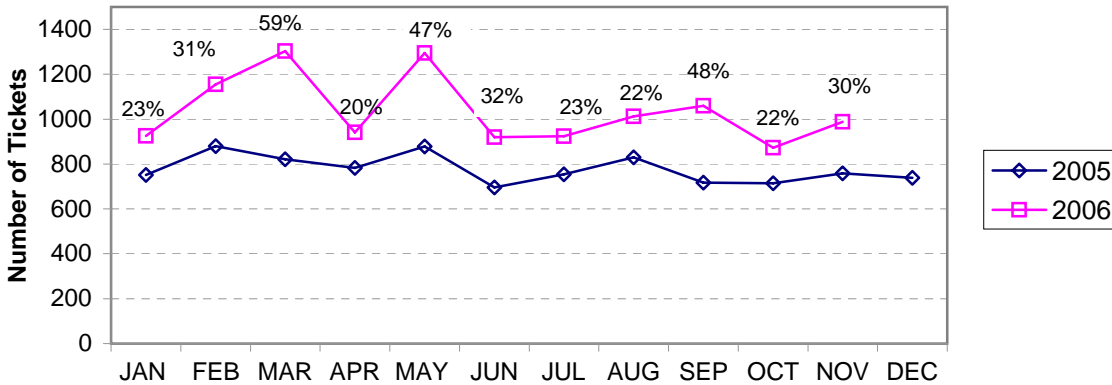
	2005	2006
Total Citations	40361	14637

(Citations issued through the "Safe Speed" program are **not** included in the summary charts/graphs; 2006 data only includes Jan- May 26.)

**Warning Ticket Violations Issued by Division
Charlotte-Mecklenburg Police Department, 2005- 2006
Through November, 2006**



**Total Warning Ticket Violations Issued by Month
Charlotte-Mecklenburg Police Department: 2005 - 2006**



**Warning Tickets Issued Year-to-Date
Charlotte-Mecklenburg Police Department
Through November, 2006**

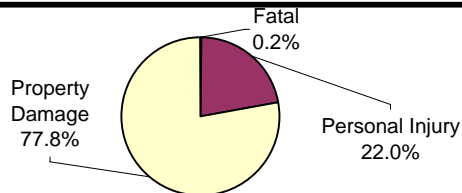
	2005	2006	% Change
Total Warning Tickets	8585	11395	32.7%

**Traffic Collision Reports
Charlotte-Mecklenburg Police Department
Year-to-Date: 2005-2006
(Through November)**

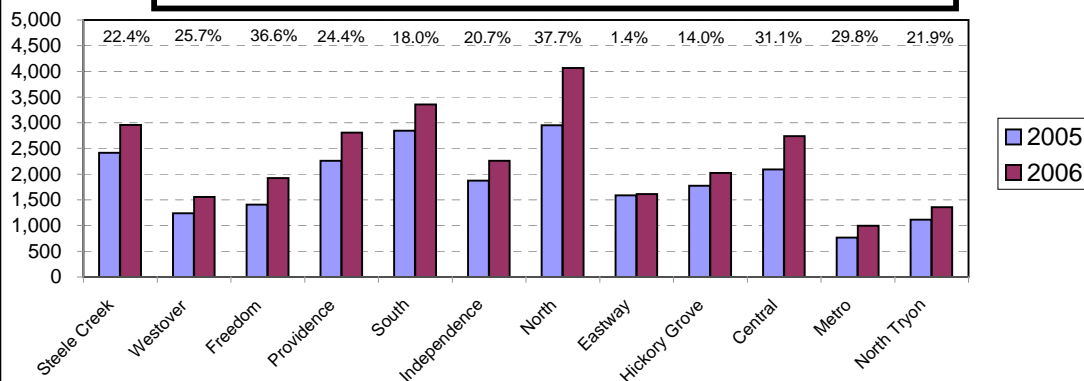
<u>Type</u>	<u>2005</u>	<u>2006</u>	<u>% Change</u>
Fatal Collisions	49	59	20.4%
Vehicle Occupants Killed	42	46	9.5%
Pedestrians Killed	8	15	87.5%
Personal Injury Collisions	5342	6136	14.9%
Property Damage Collisions	17024	21610	26.9%
Total Collisions	22415	27805	24.0%

* The number of fatal collisions and the number of persons killed (fatalities) in those incidents is taken from the HITS file. Their records are updated for deaths that occur after the initial report is filed. Figures for 2005 may be adjusted after publication of 2005 Annual Report.

**Traffic Collisions Reported by Type
Charlotte-Mecklenburg Police Department:
2006 Year-to-Date
(Through November)**



**Traffic Collisions Reported by Charlotte-Mecklenburg Police Dept.
Year-to-Date By Location (Division) : 2005 -2006
(Through November)**



**CITIZEN-INITIATED CALLS FOR SERVICE¹ BY TYPE
CHARLOTTE-MECKLENBURG POLICE DEPARTMENT**

<u>Type of Call²</u>	<u>2005 Year-to-Date Through November</u>	<u>2006 Year-to-Date Through November</u>	<u>Year-to-Date % Change</u>
ABC RELATED	2102	2081	-1.0%
ACCIDENT	32771	33670	2.7%
ALARM	31591	33528	6.1%
ANIMAL CONTROL ³	227	277	22.0%
ASSAULT	4241	4397	3.7%
ASSAULT WITH DEADLY WEAPON	1613	1859	15.3%
ASSIST OTHER AGENCY	7412	7805	5.3%
BOMB THREAT	112	91	-18.8%
BREAK/ENTER	17302	19228	11.1%
CDCP CLINICIAN VISIT ⁴	0	1138	NA
COMMUNICATING THREATS	3158	3140	-0.6%
COUNTY SECURITY ³	8	8	0.0%
CRIMINAL INTELLIGENCE	23	14	-39.1%
CRITICAL INCIDENT ⁴	0	13	NA
DAMAGE TO PROPERTY	7394	7430	0.5%
DEATH	241	256	6.2%
DISTURBANCE	24742	26540	7.3%
DOMESTIC INCIDENT	33937	32448	-4.4%
DRUG RELATED	3665	3848	5.0%
EXTORTION/BLACKMAIL ⁴	0	10	NA
FIGHT	3094	3034	-1.9%
FIRE	10	28	180.0%
FIRE CASE	79	61	-22.8%
FRAUD/FORGERY	3001	3626	20.8%
GAMBLING	16	8	-50.0%
HARASSMENT	1801	1557	-13.5%
HIT AND RUN	6980	7204	3.2%
JUVENILE RELATED	2106	2029	-3.7%
KIDNAPPING	193	221	14.5%
LAKE ENFORCEMENT	64	28	-56.3%
LARCENY	27374	28033	2.4%
LOITERING	4572	5343	16.9%
MAJOR INCIDENT	23	4	-82.6%
MISSING PERSON	6450	6621	2.7%
NOISE COMPLAINT	13385	14012	4.7%
OFFENSE AGAINST FAMILY	11	32	190.9%
OFFICER CALLED IN	667	497	-25.5%
OVERDOSE	373	49	-86.9%
PORNOGRAPHY	5	14	180.0%
PROPERTY	5967	6933	16.2%
PROSTITUTION	1204	1206	0.2%
PUBLIC SERVICE	20977	16066	-23.4%
QUALITY OF LIFE	1698	1072	-36.9%
ROBBERY	3470	3221	-7.2%
SEX CRIME	1123	1121	-0.2%
SPECIAL SERVICE REQUEST	9	3	-66.7%
SUICIDE	1064	1202	13.0%
SUSPICIOUS PERSON	18301	19681	7.5%
TRAFFIC RELATED	10067	10557	4.9%
TRESPASS	4112	3870	-5.9%
VEHICLE RELATED	31750	34492	8.6%
VIOLENT CRIMES TASK FORCE	2	2	0.0%
WARRANT RELATED	3297	3005	-8.9%
WEAPON RELATED	7370	8518	15.6%
ZONE CHECK-ADVISED EVENT ⁴	0	15	NA
911 HANG UP / CALLBACK	24003	14293	-40.5%
TOTAL	375157	375439	0.1%

¹These totals exclude duplicate and cancelled calls for service; they include calls handled by the Crime Reporting Unit as well as by division field officers, detectives and related CMPD staff.

²The type of call is determined from the 911 call, unless updated by an officer assigned to respond.

³In this summary, calls to Animal Control, Mecklenburg County Security, or Davidson Police are not included unless they also involve the dispatching of C-MPD field officers or detectives.

⁴This call type was not in use during the previous year and/or all of the current year.

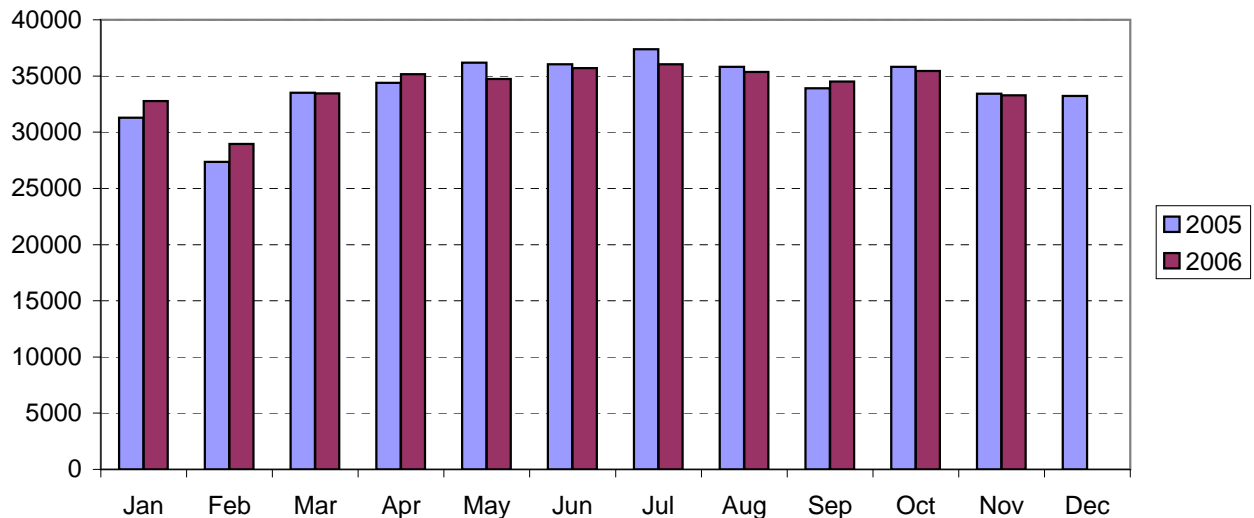
CITIZEN-INITIATED CALLS FOR SERVICE BY ORIGINATING CMPD DIVISION^{1,2}
 (Based on District of Call Origination, Not on Assigned District of Responding Units)

<u>District</u>	<u>2005 Year-to-Date Through November</u>	<u>2006 Year-to-Date Through November</u>	<u>Year-to-Date % Change</u>
Central-01 (D1)	24032	23998	-0.1%
Metro-02 (D2)	20614	21095	2.3%
Eastway-06 (C2)	28040	25940	-7.5%
North Tryon-07 (D3)	22718	23018	1.3%
North-11 (C1)	46154	50673	9.8%
Hickory Grove-12 (C3)	34751	35447	2.0%
Providence-16 (B1)	25940	25695	-0.9%
Independence-17 (B3)	32688	33141	1.4%
Steele Creek-21 (A1)	32752	33411	2.0%
South-22 (B2)	34024	33506	-1.5%
Westover-26 (A2)	25434	26746	5.2%
Freedom-27 (A3)	37094	39277	5.9%

¹These totals exclude duplicate and cancelled calls for service; they include calls handled by the Crime Reporting Unit as well as by division field officers, detectives and other CMPD staff.

²Calls where the location could not be assigned to one of the divisions are not included in this chart.

Citizen-Initiated Calls for Service¹ by Month
Charlotte-Mecklenburg Police Department: 2005-2006



¹These totals exclude duplicate and cancelled calls for service; they include calls handled by the Crime Reporting Unit as well as by division field officers, detectives and other CMPD staff.

Uniform Crime Reporting Procedures

The Charlotte-Mecklenburg Police Department reports offense and arrest statistics in accordance with standard Uniform Crime Reporting (UCR) guidelines. UCR policy states that any adjustments to previous months can be made on the current month's report:

...In tabulating crime counts, an agency may find that offense totals for past months require adjustments due to developments in the investigation or other handling of the matter. It may be necessary to adjust totals reported to UCR for the past month or prior months. Needed adjustments can be made on the current month's report and do not affect the reliability of the figures in that such adjustments tend to equalize each other from month to month over a period of time.

- *Uniform Crime Reporting Handbook*, FBI, 1984, p. 42-43

We are required to report crime monthly to the UCR program, and we do therefore make an effort to process monthly changes in a timely manner. However, occasionally due to the review and processing required for reclassifying, unfounding or clearing cases, the current month's totals may reflect the processing of a backlog of these changes from previous months.

Users of the data are cautioned that conclusions about substantial changes in crime trends or in clearance rates based on only a single month's data or trend may reflect some of these adjustments. For this reason, in addition to the monthly and year-to-date trends on Page 1, the monthly report routinely includes a comparison for the previous 12 months (p. 4), as well as graphs that provide seasonal/monthly comparisons over a five-year period (p. 5-8).

UCR Definitions and Terms:

Index Crime: the eight offenses that the national UCR program tracks on a yearly basis to gauge trends in the extent of crime, despite differences among state and local criminal statutes. These offenses were selected on the basis of several factors: seriousness, frequency of occurrence, pervasiveness in all geographic areas, and/or likelihood of being reported to law enforcement.

Violent Index: includes the offenses of murder/non-negligent manslaughter, rape, robbery, and aggravated assault

Property Index: includes the offenses of burglary, larceny, vehicle theft and arson

Murder/non-negligent manslaughter: the willful killing of one human being by another

Justifiable Homicide: limited by UCR to either a killing by a law enforcement officer in the line of duty or a killing by a citizen of a felon during the commission of a felony. If a homicide is determined to be "justifiable" by this definition, it is subtracted from the murder/non-negligent manslaughter category after investigation.

Rape: the carnal knowledge of a female forcibly and against her will [Note: This offense does not include other sex offenses or statutory (non-forcible) rape.]

Robbery: the taking or attempt to take anything of value from the care, custody, or control of a person or persons by force, threat of force or violence, or by putting the victim in fear.

Aggravated assault: an unlawful attack by one person on another for the purpose of inflicting severe or aggravated bodily injury; includes 1) all assaults in which a weapon of any type is used or is threatened to be used and/or 2) all assaults where serious injury occurs.

Burglary: the unlawful entry or attempted entry of a structure to commit a felony or a theft

Larceny-Theft: the unlawful taking (or attempt), carrying, leading, or riding away of property from the possession or constructive possession of another [Note: Larceny/theft of a motor vehicle is classed separately.]

Vehicle Theft: the theft or attempted theft of a motor vehicle (a self-propelled vehicle that runs on land and not on rails, excluding farm and construction equipment)

Arson: the willful or malicious burning or attempt to burn, with or without intent to defraud, a structure, motor vehicle, personal property of another, etc.

Hierarchy rule: For cases involving multiple-offenses, the incident is classified and counted based on the highest offense on a hierarchy of crimes established by UCR. For example, for an incident involving a rape and a burglary, the incident would be counted in the rape category because rape is higher than burglary on the hierarchy.

Clearance: A case is considered cleared when either at least one arrest is made for the offense or when an offender's identity is established by investigation but the offender will not be arrested for reasons outside law enforcement control (offender dies, victim refuses to prosecute, district attorney declines prosecution, extradition is refused, etc.).

Unfounding: A case is "unfounded" and subtracted from the crime counts when investigation establishes that the incident did not actually occur or that the actions within the incident are not criminal based on current law.

For additional information, please consult the *UCR Handbook* on the FBI website at <http://www.fbi.gov/ucr/ucr.htm>.

This report was compiled by the Research, Planning, and Analysis Division.

We make an effort to present the most accurate information available at the time this report is published. Please notify the Research, Planning, and Analysis office if you have any questions about the data in this report or about an error that was missed in proofing the report.