



---

**CHARLOTTE-MECKLENBURG POLICE DEPARTMENT  
MONTHLY SUMMARY REPORT  
OCTOBER, 2006**

---

---

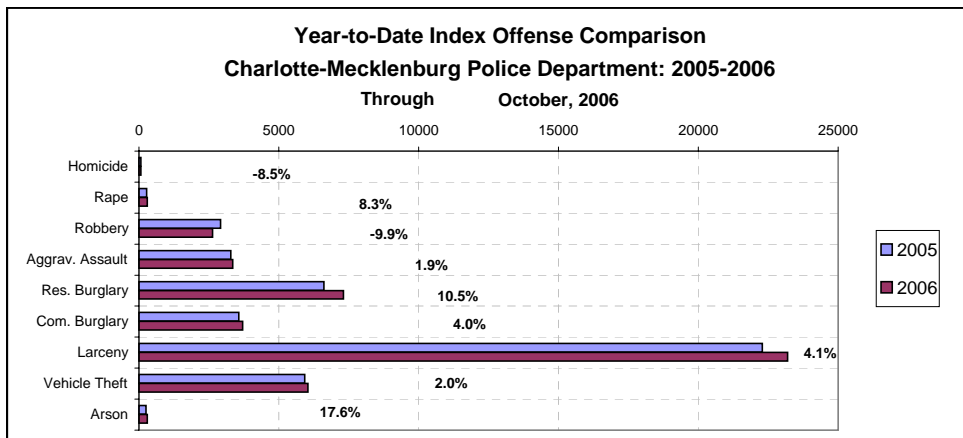
**Darrel Stephens  
Chief of Police**

---

**INDEX OFFENSES REPORTED TO CHARLOTTE-MECKLENBURG POLICE DEPARTMENT**

October, 2006 INDEX OFFENSES	# THIS MONTH	% OF ALL INDEX	# LAST MONTH	MONTHLY % CHANGE	SAME MONTH LAST YEAR	MONTHLY % CHANGE	THIS YEAR TO DATE	LAST YEAR TO DATE	ANNUAL % CHANGE
HOMICIDE (MURDER & NON- NEGLIGENT MANSLAUGHTER)*	14	0.3%	5	180.0%	8	75.0%	65	71	-8.5%
RAPE TOTAL	37	0.7%	29	27.6%	39	-5.1%	301	278	8.3%
ACTUAL	32	0.6%	27	18.5%	36	-11.1%	273	263	3.8%
ATTEMPT	5	0.1%	2	150.0%	3	66.7%	28	15	86.7%
ROBBERY TOTAL	253	4.9%	308	-17.9%	344	-26.5%	2626	2916	-9.9%
ARMED	223	4.3%	249	-10.4%	290	-23.1%	2112	2394	-11.8%
STRONG-ARM	30	0.6%	59	-49.2%	54	-44.4%	514	522	-1.5%
AGGRAVATED ASSAULT TOTAL	324	6.3%	341	-5.0%	338	-4.1%	3350	3289	1.9%
BURGLARY TOTAL	1263	24.5%	1105	14.3%	1162	8.7%	11036	10182	8.4%
RESIDENTIAL	865	16.8%	751	15.2%	745	16.1%	7309	6617	10.5%
COMMERCIAL	398	7.7%	354	12.4%	417	-4.6%	3707	3565	4.0%
*****									
FORCE	1001	19.4%	889	12.6%	961	4.2%	8877	8276	7.3%
NO FORCE	156	3.0%	133	17.3%	115	35.7%	1322	1260	4.9%
ATTEMPT	106	2.1%	83	27.7%	86	23.3%	837	645	29.8%
LARCENY TOTAL	2593	50.4%	2490	4.1%	2327	11.4%	23190	22287	4.1%
\$200 AND OVER	1387	26.9%	1281	8.3%	1117	24.2%	11950	10943	9.2%
\$50 TO \$200	447	8.7%	461	-3.0%	474	-5.7%	4382	4440	-1.3%
UNDER \$50	759	14.7%	748	1.5%	736	3.1%	6858	6904	-0.7%
*****									
FROM AUTO	1421	27.6%	1354	4.9%	1258	13.0%	12277	11184	9.8%
BICYCLE	18	0.3%	38	-52.6%	27	-33.3%	229	211	8.5%
SHOPLIFTING	210	4.1%	187	12.3%	182	15.4%	2168	2136	1.5%
OTHERS	944	18.3%	949	-0.5%	860	9.8%	8554	8756	-2.3%
VEHICLE THEFT TOTAL	639	12.4%	641	-0.3%	730	-12.5%	6045	5928	2.0%
ARSON TOTAL	25	0.5%	26	-3.8%	28	-10.7%	294	250	17.6%
TOTALS	5148	100.0%	4945	4.1%	4976	3.5%	46907	45201	3.8%
VIOLENT PROPERTY	628	12.2%	683	-8.1%	729	-13.9%	6342	6554	-3.2%
PROPERTY	4520	87.8%	4262	6.1%	4247	6.4%	40565	38647	5.0%

\*NOTE: These totals include offenses reported to the Charlotte-Mecklenburg Police Department in accordance with the Uniform Crime Reporting (UCR) Program. The October totals include 3 cases where the initial incident occurred in a previous month that were reclassified to murder in the automated records system this month. Totals do not include cases classed as justifiable homicides by UCR rules ( See the glossary at the end of this report for the UCR definition of justifiable homicide.

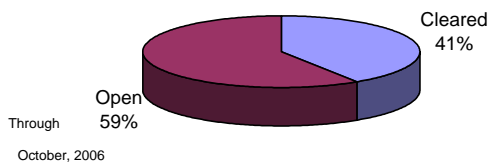


**INDEX CLEARANCES REPORTED BY THE CHARLOTTE-MECKLENBURG POLICE DEPARTMENT**

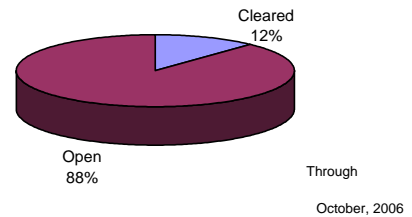
October, 2006 INDEX CLEARANCES	THIS MONTH:		LAST MONTH:		SAME MO. LAST YR:		THIS YEAR TO DATE:		LAST YEAR TO DATE:	
	NO.	%	NO.	%	NO.	%	NO.	%	NO.	%
MURDER & NON-NEGLIGENT MANSLAUGHTER <sup>1</sup>	5	35.7%	8	160.0%	13	162.5%	41	63.1%	41	57.7%
RAPE TOTAL	27	73.0%	18	62.1%	20	51.3%	216	71.8%	221	79.5%
ACTUAL	25	78.1%	17	63.0%	20	55.6%	198	72.5%	188	71.5%
ATTEMPT	2	40.0%	1	50.0%	0	0.0%	18	64.3%	17	113.3%
ROBBERY TOTAL	85	33.6%	46	14.9%	74	21.5%	725	27.6%	632	21.7%
ARMED	68	30.5%	33	13.3%	64	22.1%	566	26.8%	493	20.6%
STRONG-ARM	17	56.7%	13	22.0%	10	18.5%	159	30.9%	139	26.6%
AGGRAVATED ASSAULT TOTAL	123	38.0%	190	55.7%	158	46.7%	1613	48.1%	1642	49.9%
BURGLARY TOTAL	109	8.6%	84	7.6%	64	5.5%	931	8.4%	1264	12.4%
RESIDENTIAL	92	10.6%	61	8.1%	48	6.4%	686	9.4%	886	13.4%
COMMERCIAL	17	4.3%	23	6.5%	16	3.8%	245	6.6%	388	10.9%
LARCENY TOTAL	323	12.5%	286	11.5%	299	12.8%	3233	13.9%	3231	14.5%
FROM AUTO	46	3.2%	45	3.3%	33	2.6%	396	3.2%	421	3.8%
BICYCLE	2	11.1%	0	0.0%	1	3.7%	18	7.9%	31	14.7%
SHOPLIFTING	121	57.6%	112	59.9%	135	74.2%	1372	63.3%	1442	67.5%
OTHERS	154	16.3%	129	13.6%	130	15.1%	1417	16.6%	1337	15.3%
VEHICLE THEFT TOTAL	78	12.2%	49	7.6%	104	14.2%	661	10.9%	946	16.0%
ARSON TOTAL	7	28.0%	4	15.4%	7	25.0%	76	25.9%	61	24.4%
TOTALS	757	14.7%	685	13.9%	739	14.9%	7496	16.0%	8038	17.8%
VIOLENT PROPERTY	240	38.2%	262	38.4%	265	36.4%	2595	40.9%	2536	38.7%
	517	11.4%	423	9.9%	474	11.2%	4901	12.1%	5502	14.2%

<sup>1</sup>NOTE : Clearances are reported in accordance with Uniform Crime Report guidelines. Since clearances are not counted for UCR until they are entered in the Records Management system, any delays in entry of the documentation may result in some clearances being reported later in succeeding months. The 2006 year-to-date clearance rate for Homicide does not yet take into account the adjustment for some cold case clearances that cannot be automatically counted and will be manually added in the final 2006 report.

**Year-to-Date Violent Index Clearance Rate  
Charlotte-Mecklenburg Police Department: 2006**

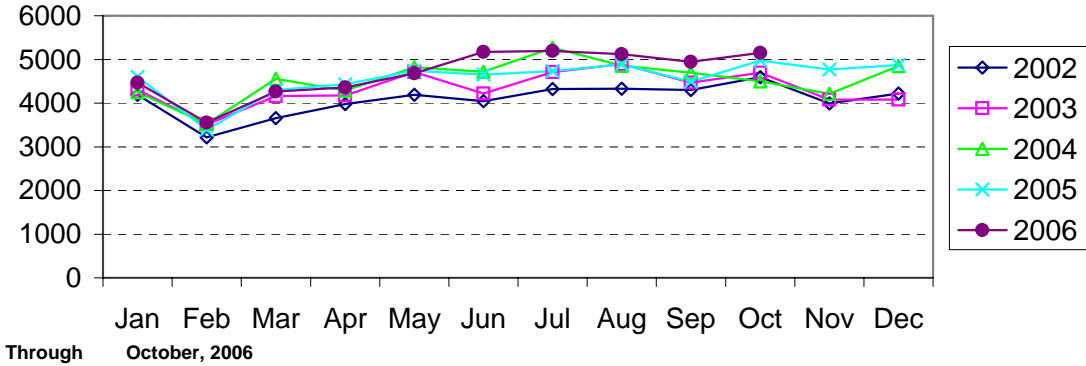


**Year-to-Date Property Index Clearance Rate  
Charlotte-Mecklenburg Police Department: 2006**

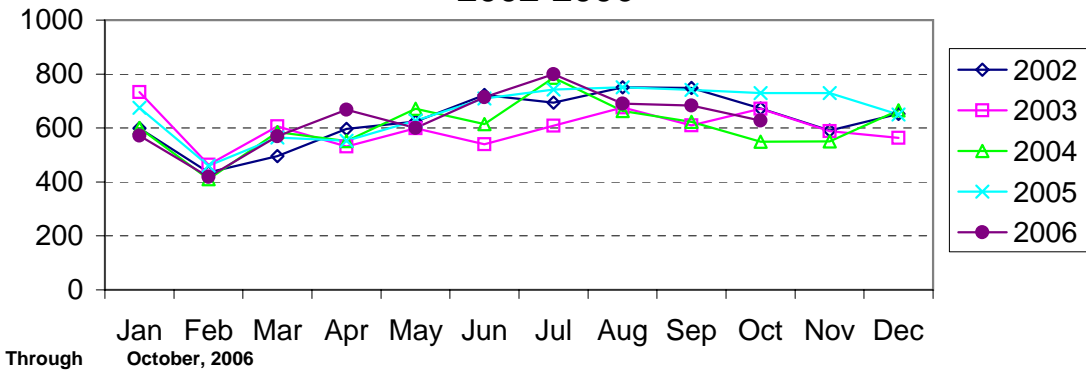


Clearance rates for crime reporting are calculated by dividing the number of crimes cleared during a designated time span by the number of crimes reported in the same period and converting the result to a percentage (multiplying by 100). Since cases from previous reporting periods can be cleared during the designated time span, the rate may be higher than 100%.

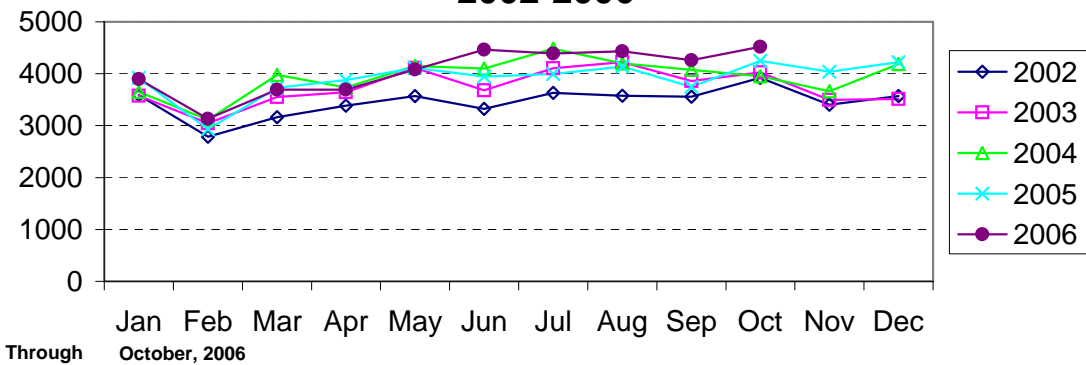
### Index Offenses Reported by Month Charlotte-Mecklenburg Police Department: 2002-2006



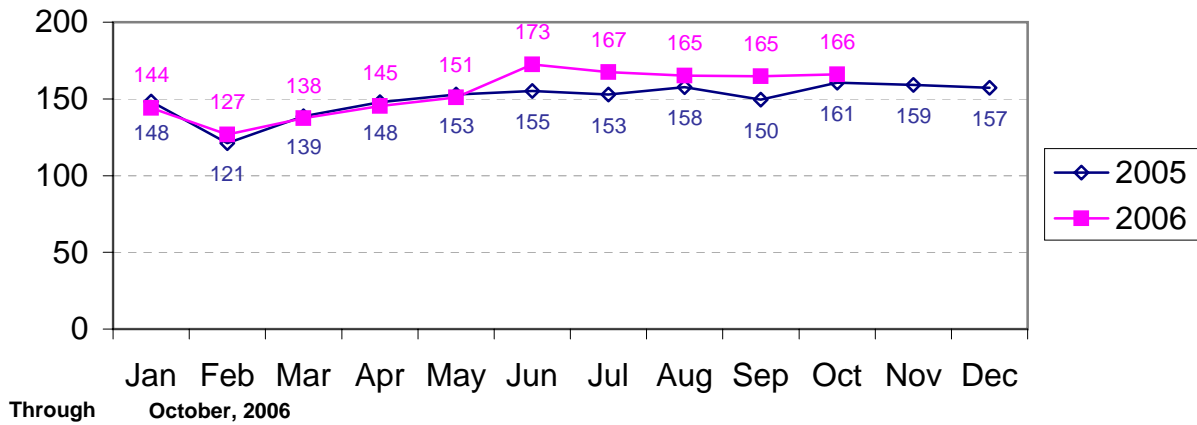
### Violent Index Offenses Reported by Month Charlotte-Mecklenburg Police Department: 2002-2006



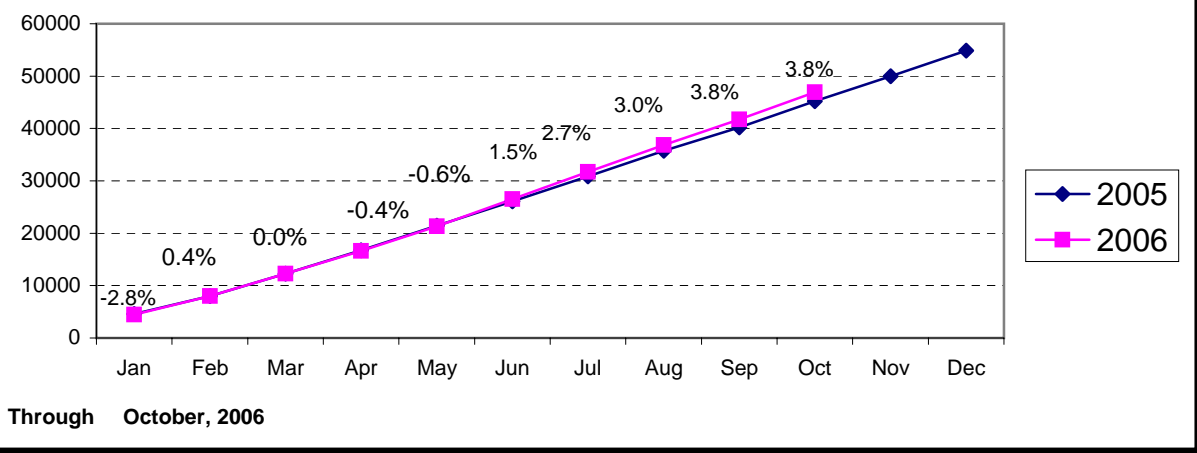
### Property Index Offenses Reported by Month Charlotte-Mecklenburg Police Department: 2002-2006



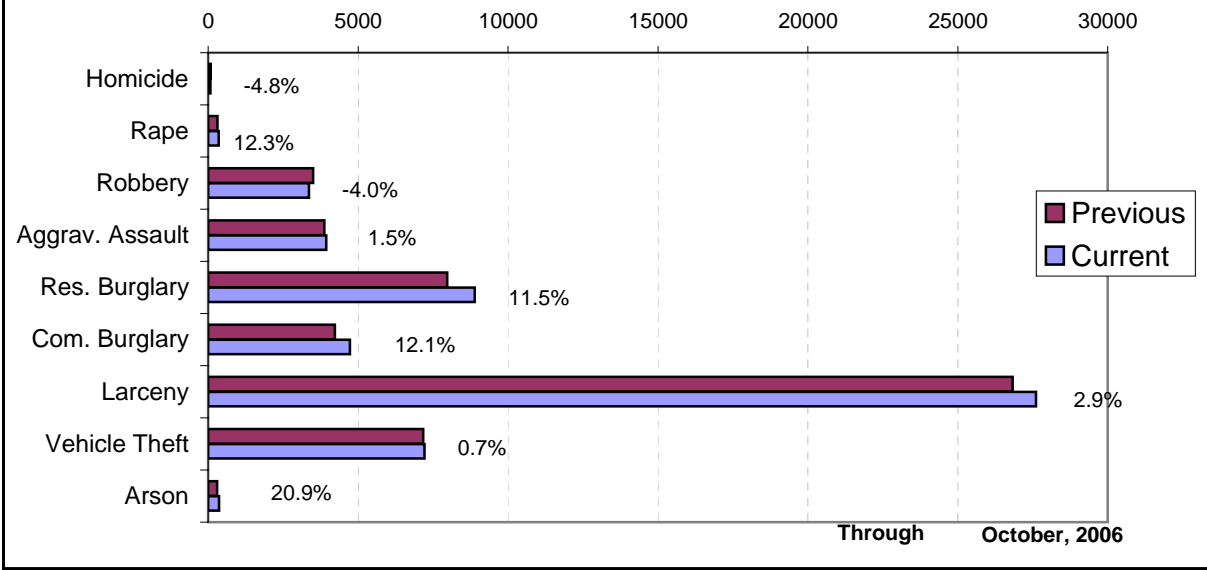
### Index Offense Per Day Average by Month Charlotte-Mecklenburg Police Department: 2005-2006



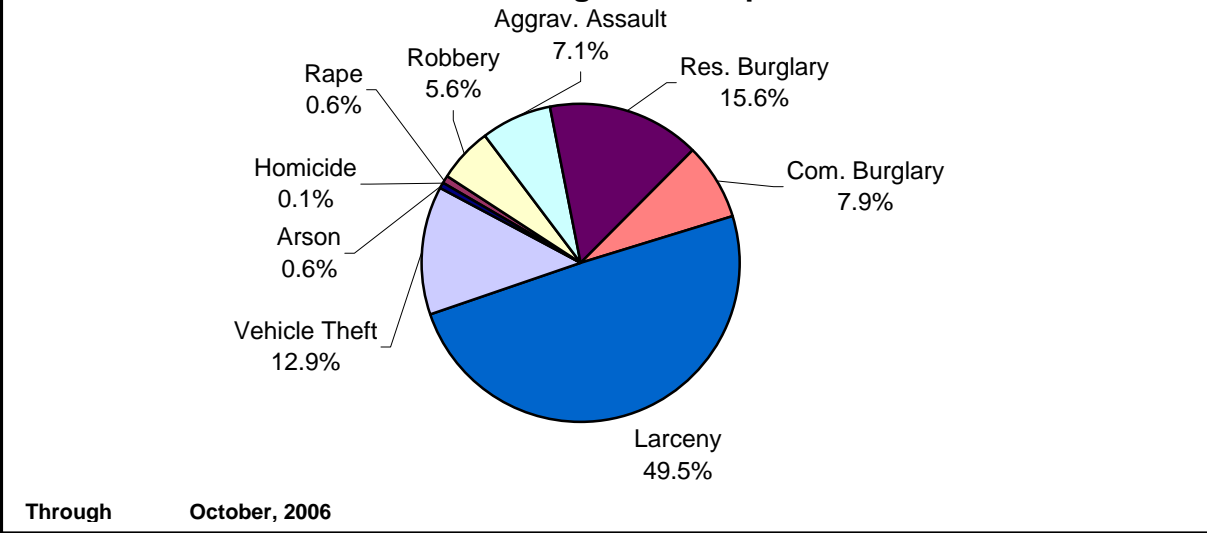
### Index Offenses Year-to-Date Cumulative Totals Charlotte-Mecklenburg Police Department: 2005-2006



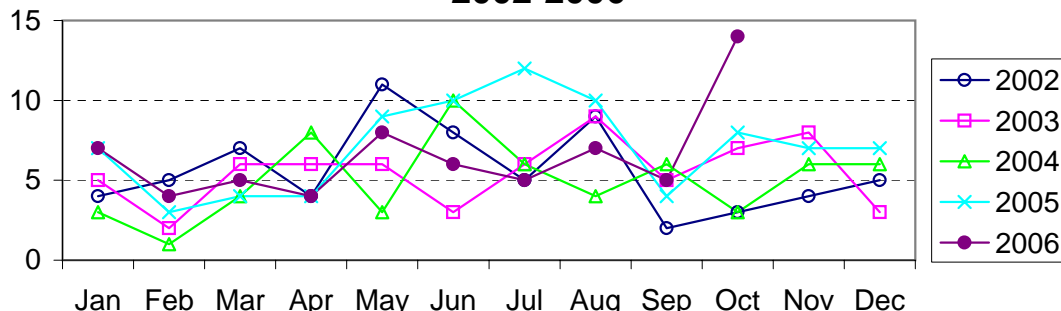
### Index Offenses in Current & Previous 12 Month Periods Charlotte-Mecklenburg Police Department



### Year-to-Date Index Offenses by Type Charlotte-Mecklenburg Police Department: 2006

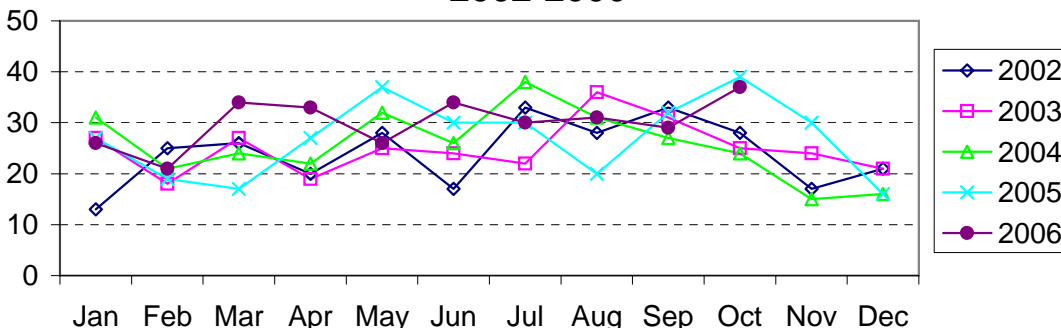


### Homicide Reported by Month Charlotte-Mecklenburg Police Department: 2002-2006



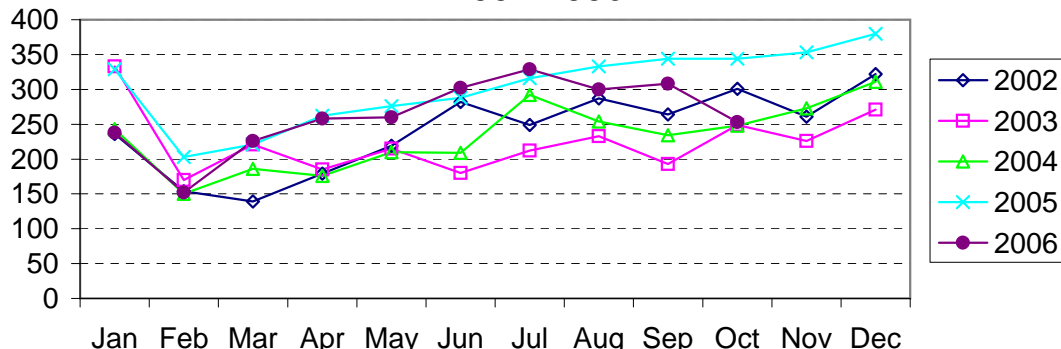
Note: The October total includes three cases from previous months that were reclassified in the records system to homicide in October.  
Through **October, 2006**

### Rape Reported by Month Charlotte-Mecklenburg Police Department: 2002-2006



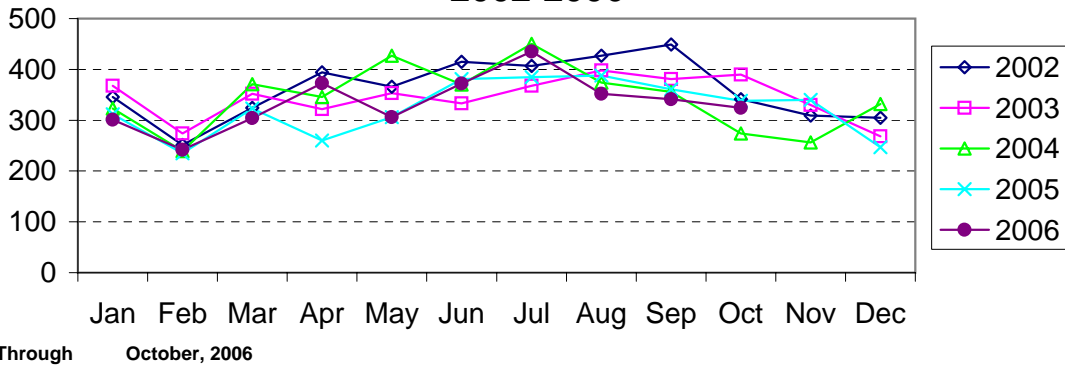
Through **October, 2006**

### Robbery Reported by Month Charlotte-Mecklenburg Police Department: 2002-2006

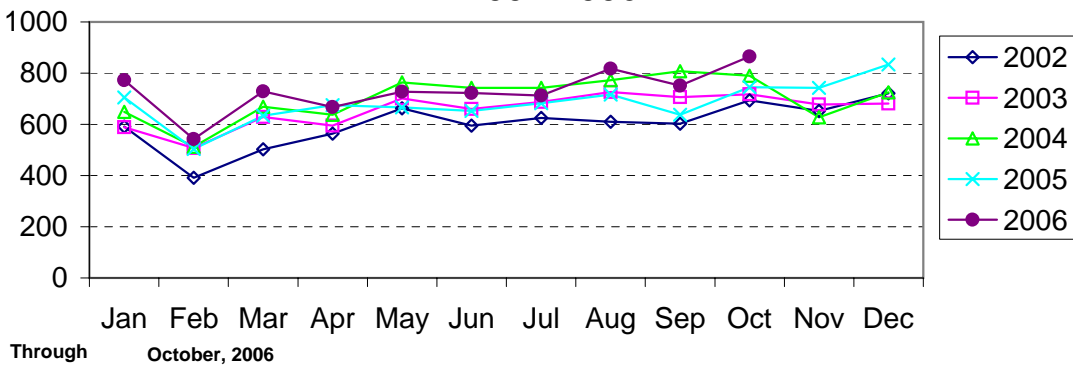


Through **October, 2006**

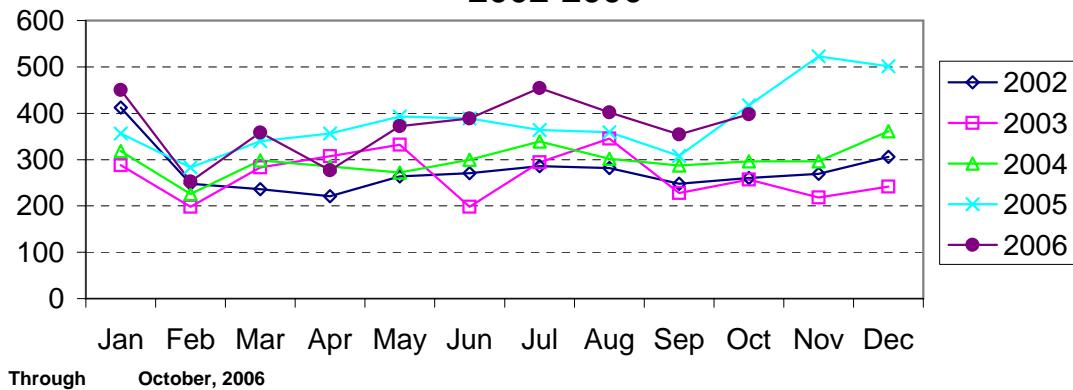
**Aggravated Assault Reported by Month  
Charlotte-Mecklenburg Police Department:  
2002-2006**



**Residential Burglary Reported by Month  
Charlotte-Mecklenburg Police Department:  
2002-2006**

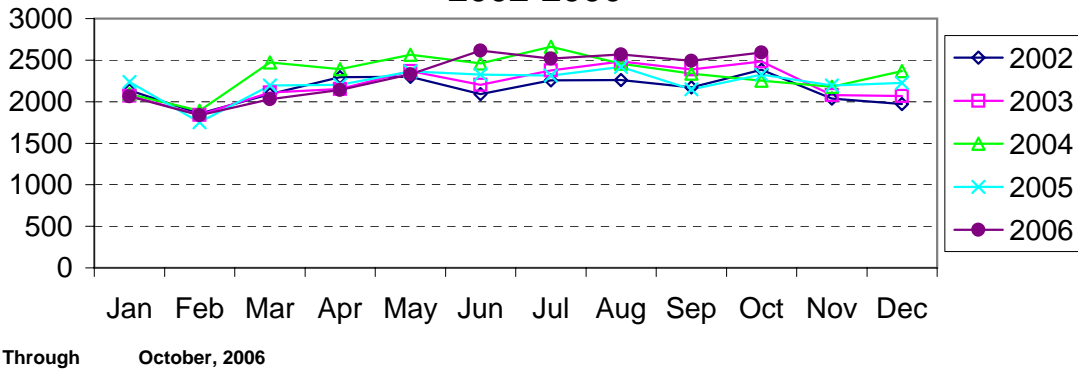


**Commercial Burglary Reported by Month  
Charlotte-Mecklenburg Police Department:  
2002-2006**

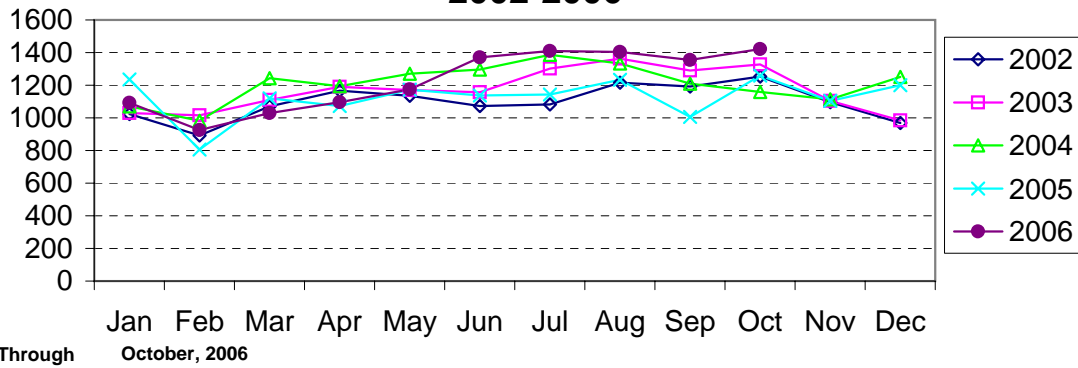




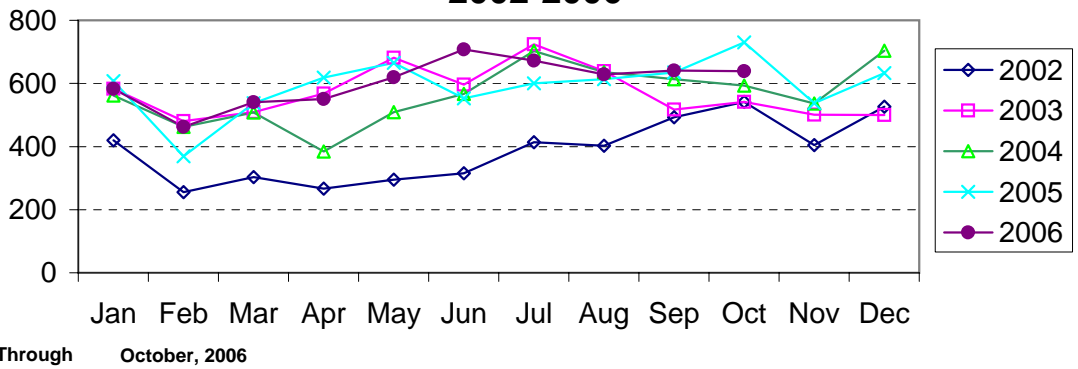
### Larceny Reported by Month Charlotte-Mecklenburg Police Department: 2002-2006



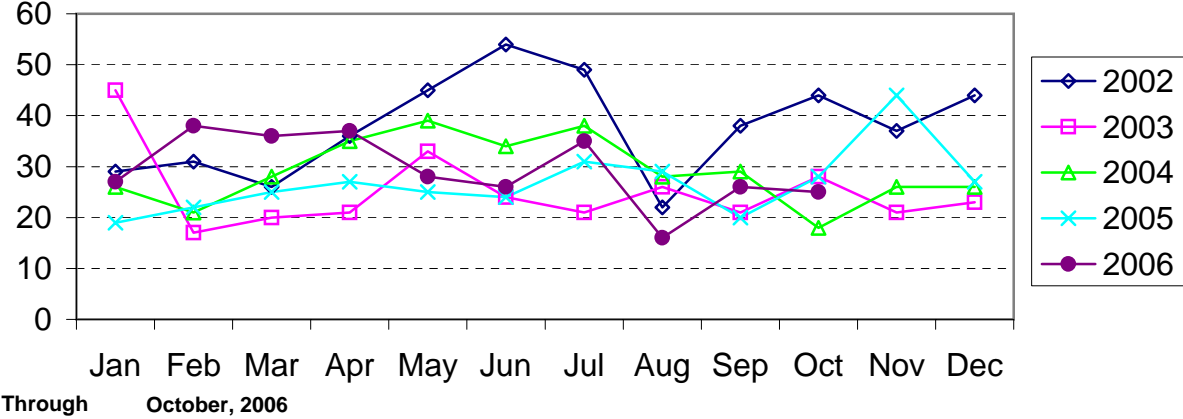
### Larceny from Vehicle Reported by Month Charlotte-Mecklenburg Police Department: 2002-2006



### Vehicle Theft Reported by Month Charlotte-Mecklenburg Police Department: 2002-2006



### Arson Reported by Month Charlotte-Mecklenburg Police Department: 2002-2006



Index Offenses Reported by Division and Service Area of Occurrence									
West Service Area: October, 2005-2006									
INDEX_CATEGORIES	Westover (A2)			Freedom (A3)			West Service Area		
	2005	2006	% Change	2005	2006	% Change	2005	2006	% Change
MURDER & NON-NEGLIGENT MANSLAUGHTER	6	4	-33.3%	11	7	-36.4%	17	11	-35.3%
RAPE	22	23	4.5%	29	33	13.8%	51	56	9.8%
ACTUAL	21	22	4.8%	27	31	14.8%	48	53	10.4%
ATTEMPTED	1	1	0.0%	2	2	0.0%	3	3	0.0%
ROBBERY	256	249	-2.7%	392	310	-20.9%	648	559	-13.7%
ARMED	209	194	-7.2%	346	249	-28.0%	555	443	-20.2%
STRONG-ARM	47	55	17.0%	46	61	32.6%	93	116	24.7%
AGGRAVATED ASSAULT	392	473	20.7%	402	477	18.7%	794	950	19.6%
BURGLARY	839	832	-0.8%	1339	1416	5.8%	2178	2248	3.2%
RESIDENTIAL	481	538	11.9%	820	857	4.5%	1301	1395	7.2%
COMMERCIAL	358	294	-17.9%	519	559	7.7%	877	853	-2.7%
LARCENY	1442	1496	3.7%	2033	2400	18.1%	3475	3896	12.1%
FROM AUTO	692	701	1.3%	882	1136	28.8%	1574	1837	16.7%
BICYCLE	6	23	283.3%	17	17	0.0%	23	40	73.9%
SHOPLIFTING	110	158	43.6%	200	254	27.0%	310	412	32.9%
OTHERS	634	614	-3.2%	934	993	6.3%	1568	1607	2.5%
VEHICLE THEFT	430	559	30.0%	589	682	15.8%	1019	1241	21.8%
ARSON	22	16	-27.3%	34	42	23.5%	56	58	3.6%
TOTALS	3409	3652	7.1%	4829	5367	11.1%	8238	9019	9.5%
VIOLENT	676	749	10.8%	834	827	-0.8%	1510	1576	4.4%
PROPERTY	2733	2903	6.2%	3995	4540	13.6%	6728	7443	10.6%

Index Offenses Reported by Division and Service Area of Occurrence									
Southeast Service Area: October, 2005-2006									
INDEX_CATEGORIES	Providence (B1)			Independence (B3)			Southeast Service Area		
	2005	2006	% Change	2005	2006	% Change	2005	2006	% Change
MURDER & NON-NEGLIGENT MANSLAUGHTER	4	4	0.0%	4	3	-25.0%	8	7	-12.5%
RAPE	16	19	18.8%	23	30	30.4%	39	49	25.6%
ACTUAL	15	17	13.3%	21	27	28.6%	36	44	22.2%
ATTEMPTED	1	2	100.0%	2	3	50.0%	3	5	66.7%
ROBBERY	108	107	-0.9%	238	232	-2.5%	346	339	-2.0%
ARMED	85	71	-16.5%	204	201	-1.5%	289	272	-5.9%
STRONG-ARM	23	36	56.5%	34	31	-8.8%	57	67	17.5%
AGGRAVATED ASSAULT	118	123	4.2%	248	220	-11.3%	366	343	-6.3%
BURGLARY	773	727	-6.0%	803	989	23.2%	1576	1716	8.9%
RESIDENTIAL	527	454	-13.9%	606	798	31.7%	1133	1252	10.5%
COMMERCIAL	246	273	11.0%	197	191	-3.0%	443	464	4.7%
LARCENY	1639	1748	6.7%	1984	1811	-8.7%	3623	3559	-1.8%
FROM AUTO	745	890	19.5%	1070	902	-15.7%	1815	1792	-1.3%
BICYCLE	19	22	15.8%	17	24	41.2%	36	46	27.8%
SHOPLIFTING	201	215	7.0%	217	189	-12.9%	418	404	-3.3%
OTHERS	674	621	-7.9%	680	696	2.4%	1354	1317	-2.7%
VEHICLE THEFT	279	310	11.1%	628	550	-12.4%	907	860	-5.2%
ARSON	9	10	11.1%	25	16	-36.0%	34	26	-23.5%
TOTALS	2946	3048	3.5%	3953	3851	-2.6%	6899	6899	0.0%
VIOLENT	246	253	2.8%	513	485	-5.5%	759	738	-2.8%
PROPERTY	2700	2795	3.5%	3440	3366	-2.2%	6140	6161	0.3%

The data in the district breakdowns does not include a small number of offenses in which the offense location (or reporting location if offense location was unknown) was entered without one of the 12 valid division assignments. Districts are not equal in geographic size, demographics, zoning/development, and other factors that influence the rate of crimes committed in an area. Therefore, the comparison of raw offense totals across districts is **not** advisable.

Index Offenses Reported by Division and Service Area of Occurrence									
Northeast Service Area: October, 2005-2006									
INDEX_CATEGORIES	North (C1)			Hickory Grove (C3)			Northeast Service Area		
	2005	2006	% Change	2005	2006	% Change	2005	2006	% Change
MURDER & NON-NEGLIGENT MANSLAUGHTER	11	4	-63.6%	8	8	0.0%	19	12	-36.8%
RAPE	35	53	51.4%	33	24	-27.3%	68	77	13.2%
ACTUAL	31	51	64.5%	30	20	-33.3%	61	71	16.4%
ATTEMPTED	4	2	-50.0%	3	4	33.3%	7	6	-14.3%
ROBBERY	221	297	34.4%	274	270	-1.5%	495	567	14.5%
ARMED	189	257	36.0%	217	216	-0.5%	406	473	16.5%
STRONG-ARM	32	40	25.0%	54	54	0.0%	86	94	9.3%
AGGRAVATED ASSAULT	300	289	-3.7%	345	316	-8.4%	645	605	-6.2%
BURGLARY	1261	1738	37.8%	1269	1500	18.2%	2530	3238	28.0%
RESIDENTIAL	843	1217	44.4%	818	996	21.8%	1661	2213	33.2%
COMMERCIAL*	418	521	24.6%	451	504	11.8%	869	1025	18.0%
LARCENY	3702	3879	4.8%	1707	1645	-3.6%	5409	5524	2.1%
FROM AUTO	2022	2171	7.4%	924	906	-1.9%	2946	3077	4.4%
BICYCLE	26	63	142.3%	28	29	3.6%	54	92	70.4%
SHOPLIFTING	330	348	5.5%	138	107	-22.5%	468	455	-2.8%
OTHERS	1324	1297	-2.0%	617	603	-2.3%	1941	1900	-2.1%
VEHICLE THEFT	813	867	6.6%	651	597	-8.3%	1464	1464	0.0%
ARSON	36	42	16.7%	31	31	0.0%	67	73	9.0%
TOTALS	6379	7169	12.4%	4318	4391	1.7%	10697	11560	8.1%
VIOLENT	567	643	13.4%	660	618	-6.4%	1227	1261	2.8%
PROPERTY	5812	6526	12.3%	3658	3773	3.1%	9470	10299	8.8%

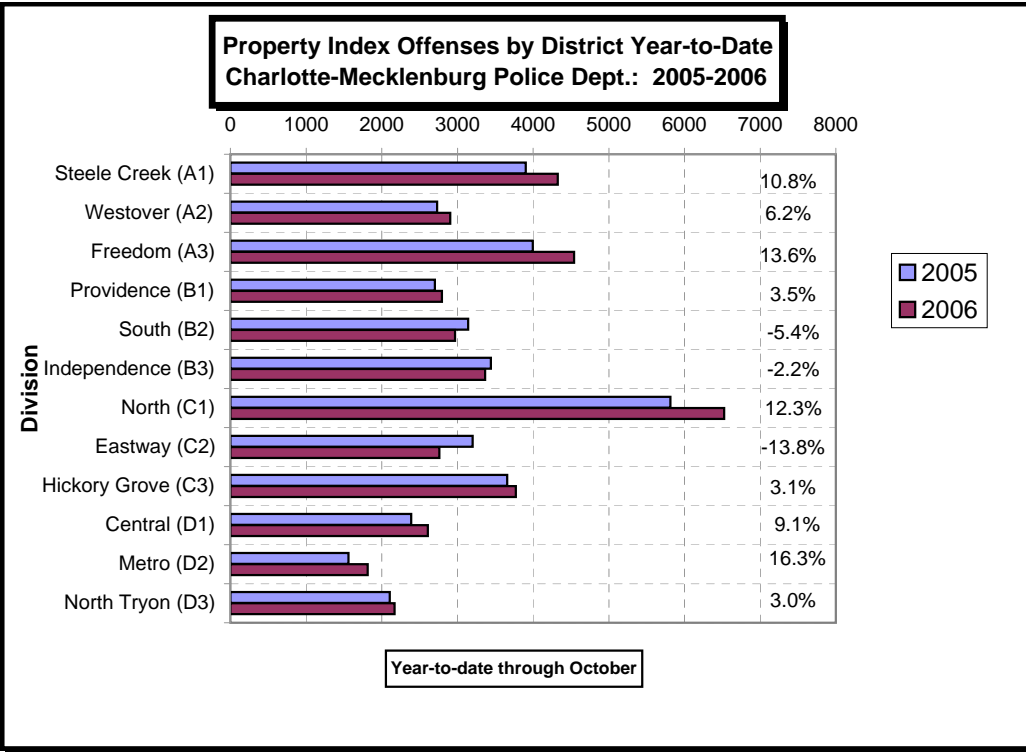
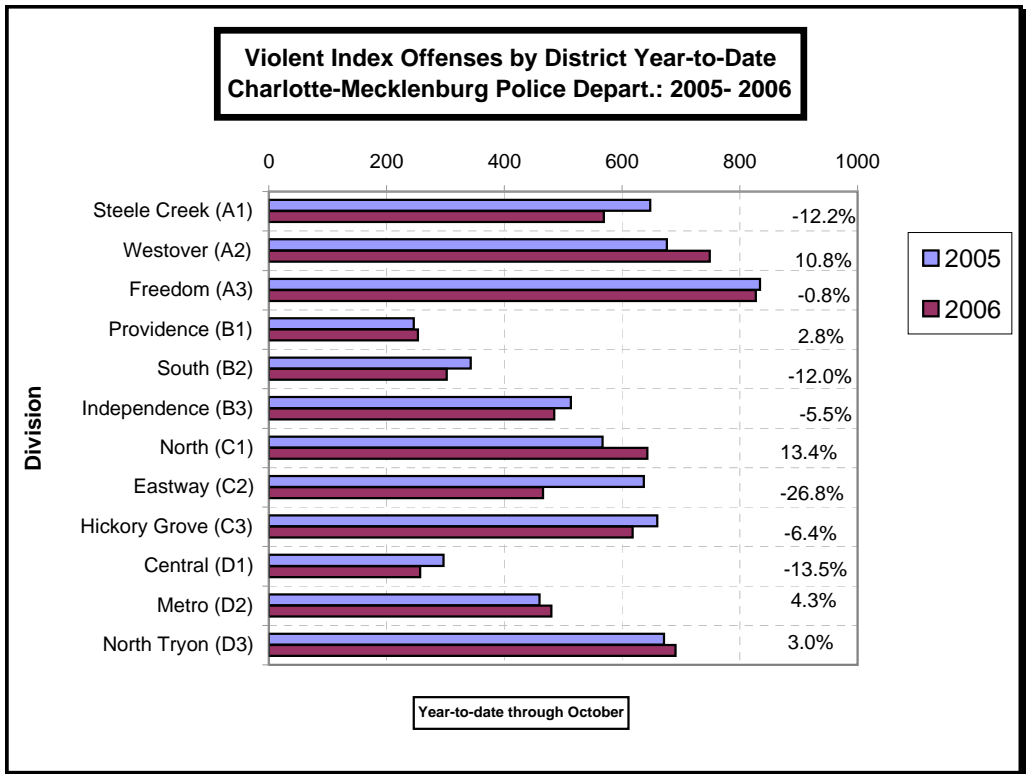
Index Offenses Reported by Division and Service Area of Occurrence									
Central Service Area: October, 2005-2006									
INDEX_CATEGORIES	Central (D1)			Metro (D2)			Central Service Area		
	2005	2006	% Change	2005	2006	% Change	2005	2006	% Change
MURDER & NON-NEGLIGENT MANSLAUGHTER	4	4	0.0%	7	8	14.3%	11	12	9.1%
RAPE	31	26	-16.1%	13	17	30.8%	44	43	-2.3%
ACTUAL	30	25	-16.7%	14	17	21.4%	44	42	-4.5%
ATTEMPTED	1	1	0.0%	-1	0	-100.0%	0	1	NA
ROBBERY	147	119	-19.0%	174	135	-22.4%	321	254	-20.9%
ARMED	90	79	-12.2%	136	103	-24.3%	226	182	-19.5%
STRONG-ARM	57	40	-29.8%	38	32	-15.8%	95	72	-24.2%
AGGRAVATED ASSAULT	115	108	-6.1%	266	320	20.3%	381	428	12.3%
BURGLARY	319	301	-5.6%	496	575	15.9%	815	876	7.5%
RESIDENTIAL	113	118	4.4%	379	367	-3.2%	492	485	-1.4%
COMMERCIAL	206	183	-11.2%	117	208	77.8%	323	391	21.1%
LARCENY	1740	1917	10.2%	735	877	19.3%	2475	2794	12.9%
FROM AUTO	927	1083	16.8%	333	440	32.1%	1260	1523	20.9%
BICYCLE	33	23	-30.3%	10	5	-50.0%	43	28	-34.9%
SHOPLIFTING	54	80	48.1%	26	29	11.5%	80	109	36.3%
OTHERS	726	731	0.7%	366	403	10.1%	1092	1134	3.8%
VEHICLE THEFT	331	373	12.7%	312	348	11.5%	643	721	12.1%
ARSON	0	16	NA	18	16	-11.1%	18	32	77.8%
TOTALS	2687	2864	6.6%	2021	2296	13.6%	4708	5160	9.6%
VIOLENT	297	257	-13.5%	460	480	4.3%	757	737	-2.6%
PROPERTY	2390	2607	9.1%	1561	1816	16.3%	3951	4423	11.9%

The data in the district breakdowns does not include a small number of offenses in which the offense location (or reporting location if offense location was unknown) was entered without one of the 12 valid division assignments. Districts are not equal in geographic size, demographics, zoning/development, and other factors that influence the rate of crimes committed in an area. Therefore, the comparison of raw offense totals across districts is **not** advisable.

Index Offenses Reported by Division and Service Area of Occurrence									
East Service Area: October, 2005-2006									
INDEX_CATEGORIES	Eastway (C2)			North Tryon (D3)			East Service Area		
	2005	2006	% Change	2005	2006	% Change	2005	2006	% Change
MURDER & NON-NEGLIGENT MANSLAUGHTER	6	2	-66.7%	5	9	80.0%	11	11	0.0%
RAPE	22	25	13.6%	8	11	37.5%	30	36	20.0%
ACTUAL	21	21	0.0%	7	10	42.9%	28	31	10.7%
ATTEMPTED	1	4	300.0%	1	1	0.0%	2	5	150.0%
ROBBERY	371	250	-32.6%	290	283	-2.4%	661	533	-19.4%
ARMED	301	204	-32.2%	240	231	-3.8%	541	435	-19.6%
STRONG-ARM	70	46	-34.3%	50	52	4.0%	120	98	-18.3%
AGGRAVATED ASSAULT	238	189	-20.6%	368	388	5.4%	606	577	-4.8%
BURGLARY	891	730	-18.1%	692	755	9.1%	1583	1485	-6.2%
RESIDENTIAL	659	540	-18.1%	405	468	15.6%	1064	1008	-5.3%
COMMERCIAL	232	190	-18.1%	290	287	-1.0%	522	477	-8.6%
LARCENY	1830	1564	-14.5%	1049	1018	-3.0%	2879	2582	-10.3%
FROM AUTO	699	681	-2.6%	511	500	-2.2%	1210	1181	-2.4%
BICYCLE	23	50	117.4%	6	11	83.3%	29	61	110.3%
SHOPLIFTING	436	288	-33.9%	52	60	15.4%	488	348	-28.7%
OTHERS	672	545	-18.9%	480	447	-6.9%	1152	992	-13.9%
VEHICLE THEFT	463	453	-2.2%	355	377	6.2%	818	830	1.5%
ARSON	17	12	-29.4%	9	18	100.0%	26	30	15.4%
TOTALS	3838	3225	-16.0%	2776	2859	3.0%	6614	6084	-8.0%
VIOLENT PROPERTY	637 3201	466 2759	-26.8% -13.8%	671 2105	691 2168	3.0% 3.0%	1308 5306	1157 4927	-11.5% -7.1%

Index Offenses Reported by Division and Service Area of Occurrence									
South Service Area: October, 2005-2006									
INDEX_CATEGORIES	Steele Creek (A1)			South (B2)			South Service Area		
	2005	2006	% Change	2005	2006	% Change	2005	2006	% Change
MURDER & NON-NEGLIGENT MANSLAUGHTER	5	5	0.0%	0	4	NA	5	9	80.0%
RAPE	30	28	-6.7%	14	12	-14.3%	44	40	-9.1%
ACTUAL	30	23	-23.3%	14	9	-35.7%	44	32	-27.3%
ATTEMPTED	0	5	NA	0	3	NA	0	8	NA
ROBBERY	271	251	-7.4%	174	123	-29.3%	445	374	-16.0%
ARMED	228	207	-9.2%	149	100	-32.9%	377	307	-18.6%
STRONG-ARM	43	44	2.3%	25	23	-8.0%	68	67	-1.5%
AGGRAVATED ASSAULT	342	285	-16.7%	155	163	5.2%	497	448	-9.9%
BURGLARY	759	812	7.0%	740	657	-11.2%	1499	1469	-2.0%
RESIDENTIAL	456	504	10.5%	512	468	-8.6%	968	972	0.4%
COMMERCIAL	303	308	1.7%	228	189	-17.1%	531	497	-6.4%
LARCENY	2450	2907	18.7%	1973	1917	-2.8%	4423	4824	9.1%
FROM AUTO	1289	1748	35.6%	1089	1113	2.2%	2378	2861	20.3%
BICYCLE	15	18	20.0%	11	16	45.5%	26	34	30.8%
SHOPLIFTING	226	197	-12.8%	146	171	17.1%	372	368	-1.1%
OTHERS	920	944	2.6%	727	617	-15.1%	1647	1561	-5.2%
VEHICLE THEFT	670	572	-14.6%	403	354	-12.2%	1073	926	-13.7%
ARSON	24	33	37.5%	25	42	68.0%	49	75	53.1%
TOTALS	4551	4893	7.5%	3484	3272	-6.1%	8035	8165	1.6%
VIOLENT PROPERTY	648 3903	569 4324	-12.2% 10.8%	343 3141	302 2970	-12.0% -5.4%	991 7044	871 7294	-12.1% 3.5%

The data in the district breakdowns does not include a small number of offenses in which the offense location (or reporting location if offense location was unknown) was entered without one of the 12 valid division assignments. Districts are not equal in geographic size, demographics, zoning/development, and other factors that influence the rate of crimes committed in an area. Therefore, the comparison of raw offense totals across districts is **not** advisable.



The data in the district breakdowns does not include a small number of offenses in which the offense location (or reporting location if offense location was unknown) was entered without one of the 12 valid division assignments. Districts are not equal in geographic size, demographics, zoning/development, and other factors that influence the rate of crimes committed in an area. Therefore, the comparison of raw offense totals across districts is **not** advisable.

**Arrests by Charlotte-Mecklenburg Police Department**  
**Year-To-Date: 2005-2006**  
**(Through October)**

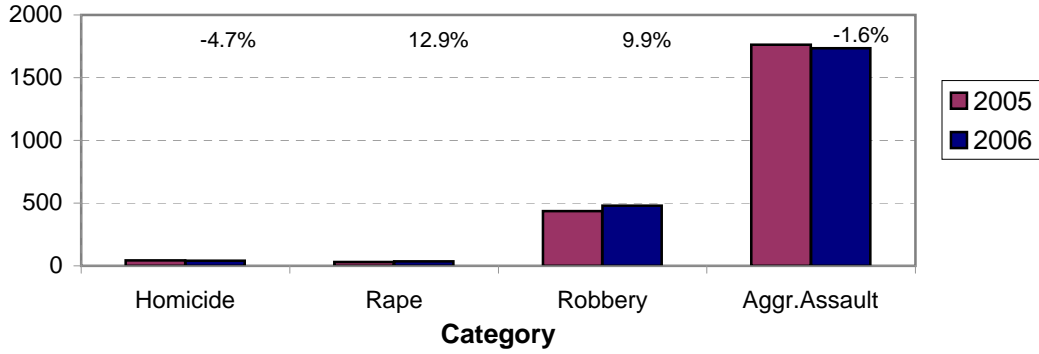
CATEGORY	ADULTS (AGE 18 & OLDER):			JUVENILES ( UNDER 18):			TOTAL ARRESTS:		
	2005 Y-T-D	2006 Y-T-D	% CHANGE	2005 Y-T-D	2006 Y-T-D	% CHANGE	2005 Y-T-D	2006 Y-T-D	% CHANGE
Murder/Non-Negligent Manslaughter	40	37	-7.5%	3	4	33.3%	43	41	-4.7%
Negligent & Vehicular Manslaughter	3	1	-66.7%	0	0	NA	3	1	-66.7%
Rape	30	29	-3.3%	1	6	500.0%	31	35	12.9%
Robbery	340	339	-0.3%	96	140	45.8%	436	479	9.9%
Aggravated Assault	1521	1499	-1.4%	241	235	-2.5%	1762	1734	-1.6%
Burglary	514	598	16.3%	204	196	-3.9%	718	794	10.6%
Larceny	1306	1172	-10.3%	451	442	-2.0%	1757	1614	-8.1%
Vehicle Theft	75	75	0.0%	94	75	-20.2%	169	150	-11.2%
Non-Aggravated Assault	1704	1654	-2.9%	653	561	-14.1%	2357	2215	-6.0%
Arson	13	12	-7.7%	25	20	-20.0%	38	32	-15.8%
Forgery/Counterfeit	120	134	11.7%	3	0	-100.0%	123	134	8.9%
Fraud	505	476	-5.7%	5	5	0.0%	510	481	-5.7%
Embezzlement	69	80	15.9%	10	11	10.0%	79	91	15.2%
Stolen Property	421	451	7.1%	125	137	9.6%	546	588	7.7%
Vandalism	185	206	11.4%	197	205	4.1%	382	411	7.6%
Weapons	512	679	32.6%	56	76	35.7%	568	755	32.9%
Prostitution	273	169	-38.1%	2	4	100.0%	275	173	-37.1%
Sex Offenses	145	151	4.1%	27	16	-40.7%	172	167	-2.9%
Drugs	2242	2533	13.0%	235	290	23.4%	2477	2823	14.0%
Gambling	8	3	-62.5%	0	0	NA	8	3	-62.5%
Offenses vs. Family	4	4	0.0%	0	0	NA	4	4	0.0%
DUI	1738	1643	-5.5%	10	16	60.0%	1748	1659	-5.1%
Liquor	192	197	2.6%	10	6	-40.0%	202	203	0.5%
Disorder Conduct	438	542	23.7%	272	250	-8.1%	710	792	11.5%
Other Non-Traffic	6633	7668	15.6%	684	892	30.4%	7317	8560	17.0%
<b>VIOLENT INDEX<sup>1</sup></b>	1931	1904	-1.4%	341	385	12.9%	2272	2289	0.7%
<b>PROPERTY INDEX<sup>2</sup></b>	1908	1857	-2.7%	774	733	-5.3%	2682	2590	-3.4%
<b>INDEX SUBTOTAL</b>	3839	3761	-2.0%	1115	1118	0.3%	4954	4879	-1.5%
<b>PART 2 SUBTOTAL<sup>3</sup></b>	15192	16591	9.2%	2289	2469	7.9%	17481	19060	9.0%
<b>TOTAL</b>	19031	20352	6.9%	3404	3587	5.4%	22435	23939	6.7%

<sup>1</sup>Violent Index includes murder and non-negligent manslaughter, rape, robbery, and aggravated assault.

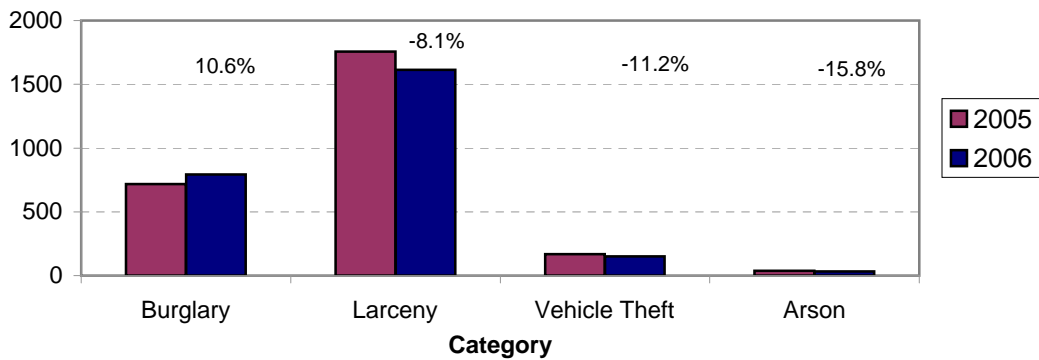
<sup>2</sup>Property Index includes burglary, larceny, vehicle theft, and arson.

<sup>3</sup>Part 2 crimes include crime categories not counted in the Index totals.

**Violent Index Arrests Year-to-Date  
Charlotte-Mecklenburg Police Department: 2005-2006  
(Through October)**

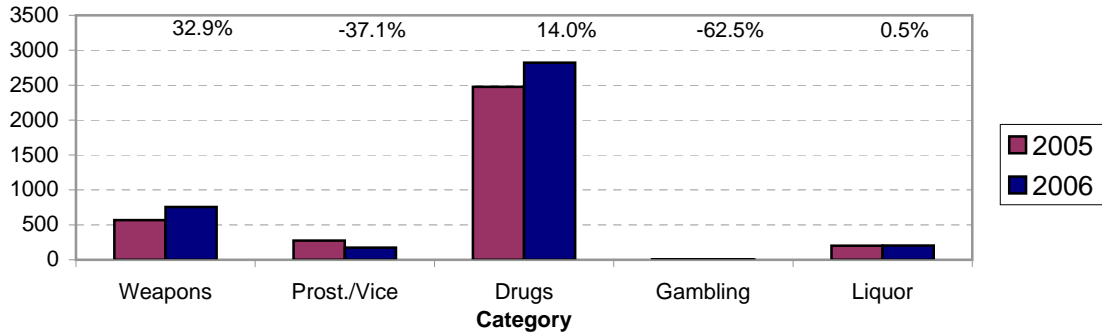


**Property Index Arrests Year-to-Date  
Charlotte-Mecklenburg Police Department: 2004-2005  
(Through October)**

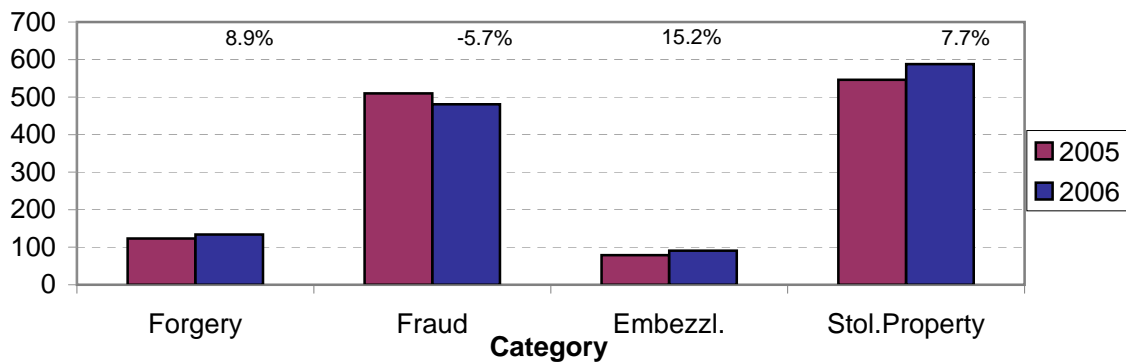




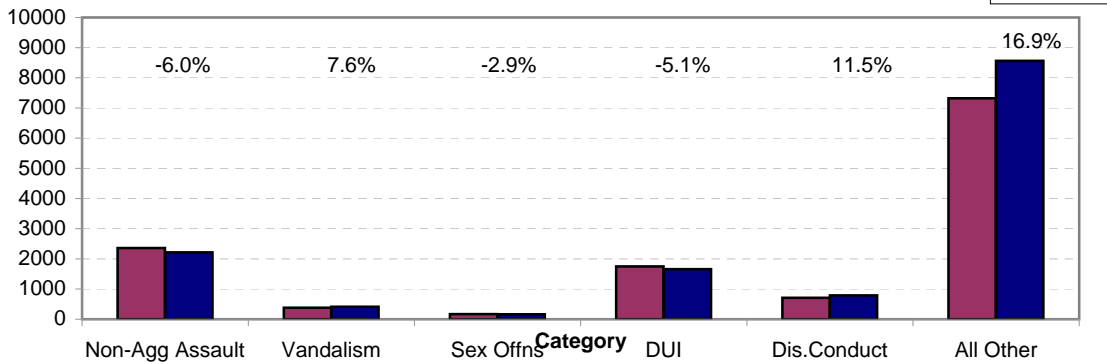
**Arrests for Vice/CCW/Drugs/Etc. Year-to-Date  
Charlotte-Mecklenburg Police Department: 2005- 2006  
(Through October)**



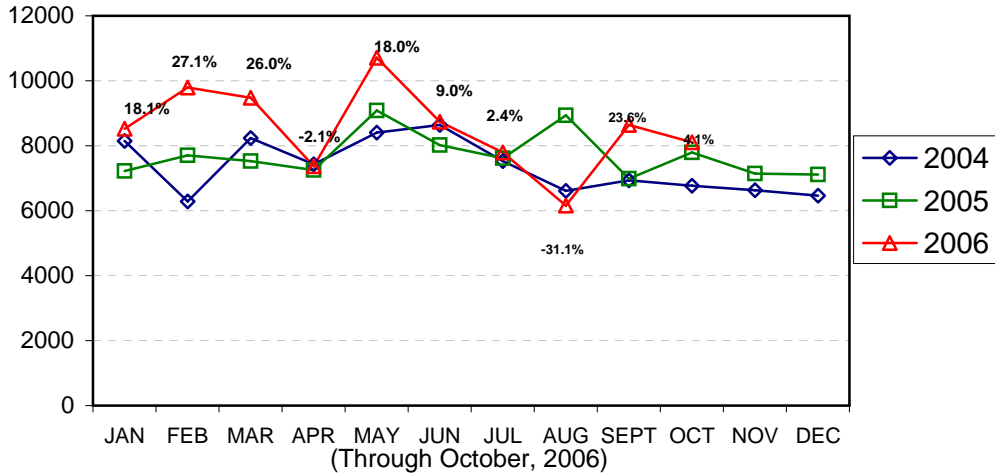
**Arrests for Property/White Collar Crime Year-to-Date  
Charlotte-Mecklenburg Police Department: 2005- 2006  
(Through October)**



**Arrests for Other Categories Year-to-Date  
Charlotte-Mecklenburg Police Department: 2005 - 2006  
(Through October)**

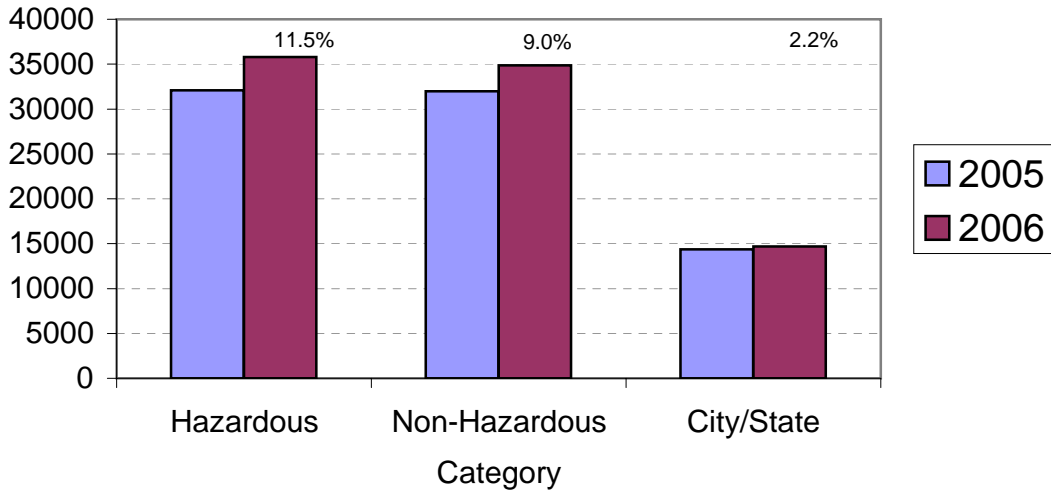


### Total Citation Enforcement by Month Charlotte-Mecklenburg Police Dept.: 2004-2006

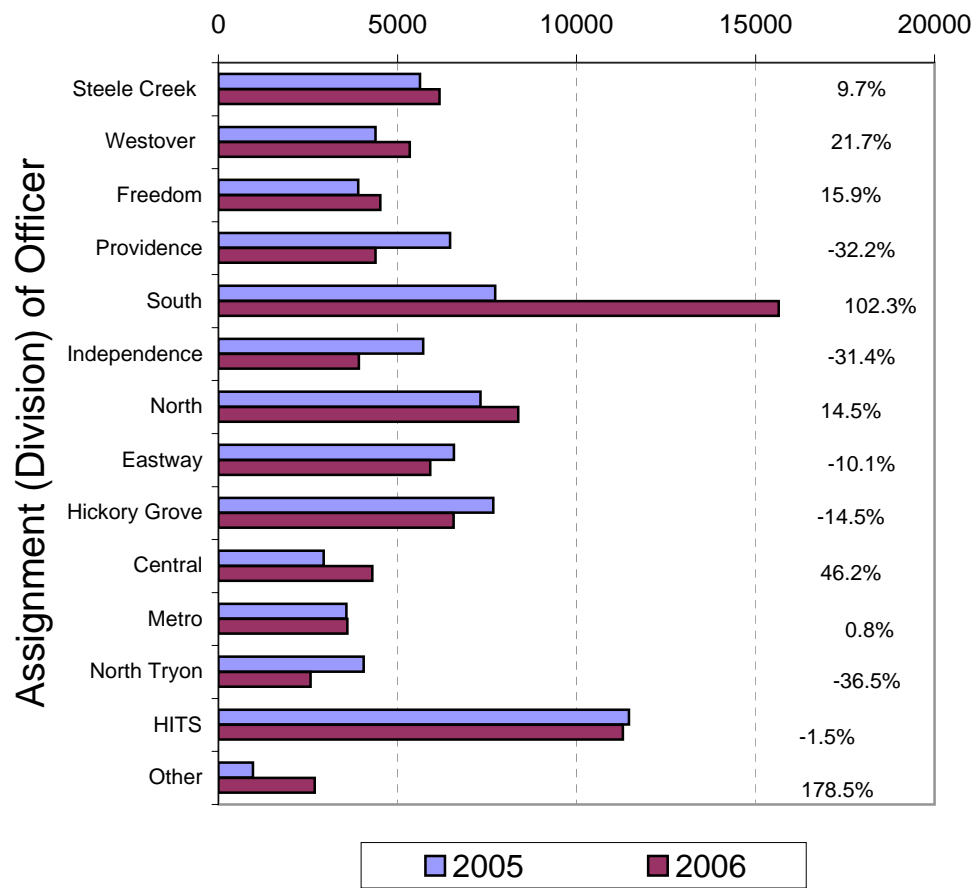


(Includes Hazardous, Non-Hazardous, and City/State Citations; percentages are current month compared to same month in previous year. Percentages are the change from current month to same month in past year. Monthly totals may be affected by data entry delays.)

### CMPD Citation Enforcement by Category Year-to-Date, 2005 - 2006 (Through October, 2006)



**Citations Issued Year-to-Date by CMPD Divisions  
2005 - 2006  
(Through October, 2006)**



**Citations Reported by the Charlotte Mecklenburg Police Year-to-Date  
(Through October, 2006)**

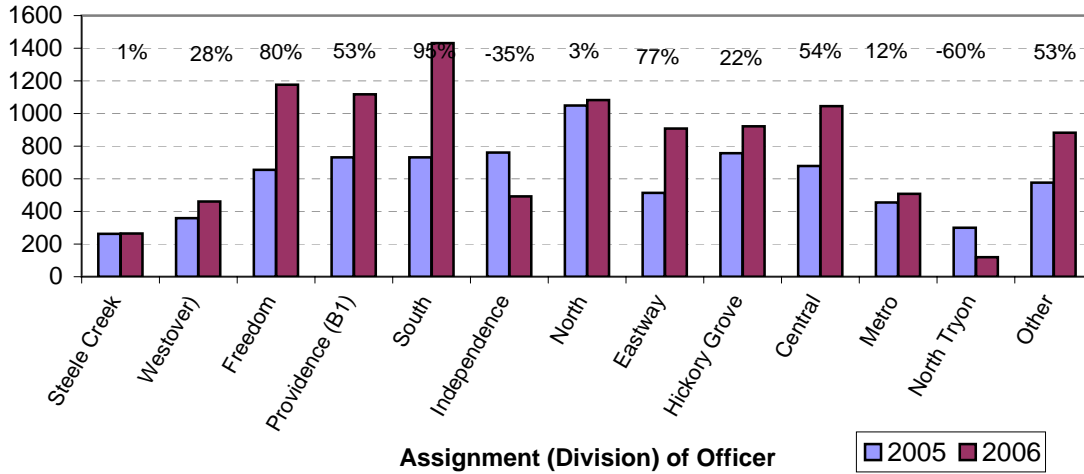
	2005	2006	% Change
Hazardous	32,078	35,776	11.5%
Non-Hazardous	31,961	34,853	9.0%
Other City/State Statute/Ordinance	14,368	14,691	2.2%
<b>Total</b>	<b>78,407</b>	<b>85,320</b>	<b>8.8%</b>

**"Safe Speed" Program: 2005-2006  
(Through May 26, 2006)**

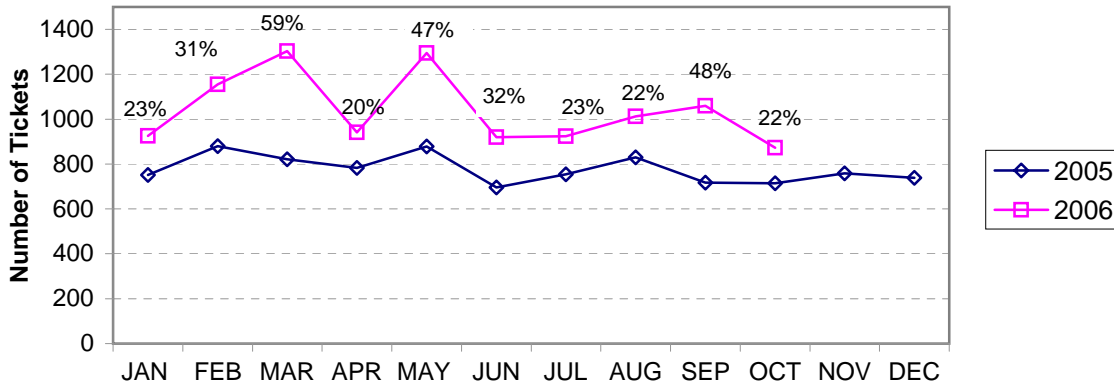
	2005	2006
Total Citations	34649	14637

(Citations issued through the "Safe Speed" program are **not** included in the summary charts/graphs; 2006 data only includes Jan- May 26.)

**Warning Ticket Violations Issued by Division  
Charlotte-Mecklenburg Police Department, 2005- 2006  
Through October, 2006**



**Total Warning Ticket Violations Issued by Month  
Charlotte-Mecklenburg Police Department: 2005 - 2006**



**Warning Tickets Issued Year-to-Date  
Charlotte-Mecklenburg Police Department  
Through October, 2006**

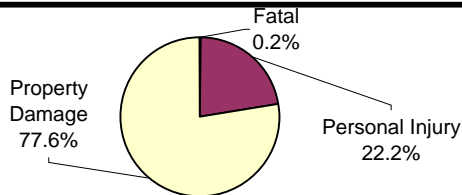
	2005	2006	% Change
Total Warning Tickets	7826	10407	33.0%

**Traffic Collision Reports  
Charlotte-Mecklenburg Police Department  
Year-to-Date: 2005-2006  
(Through October)**

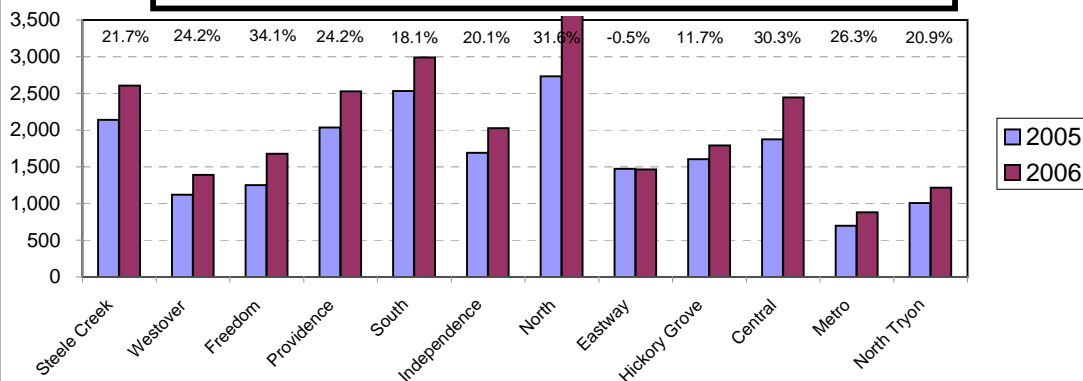
<u>Type</u>	<u>2005</u>	<u>2006</u>	<u>% Change</u>
Fatal Collisions	43	56	30.2%
Vehicle Occupants Killed	39	43	10.3%
Pedestrians Killed	5	15	200.0%
Personal Injury Collisions	4829	5498	13.9%
Property Damage Collisions	15368	19208	25.0%
<b>Total Collisions</b>	<b>20240</b>	<b>24762</b>	<b>22.3%</b>

\* The number of fatal collisions and the number of persons killed (fatalities) in those incidents is taken from the HITS file. Their records are updated for deaths that occur after the initial report is filed. Figures for 2005 may be adjusted after publication of 2005 Annual Report.

**Traffic Collisions Reported by Type  
Charlotte-Mecklenburg Police Department:  
2006 Year-to-Date  
(Through October)**



**Traffic Collisions Reported by Charlotte-Mecklenburg Police Dept.  
Year-to-Date By Location (Division) : 2005 -2006  
(Through October)**



**CITIZEN-INITIATED CALLS FOR SERVICE<sup>1</sup> BY TYPE  
CHARLOTTE-MECKLENBURG POLICE DEPARTMENT**

<u>Type of Call<sup>2</sup></u>	<u>2005 Year-to-Date Through October</u>	<u>2006 Year-to-Date Through October</u>	<u>Year-to-Date % Change</u>
ABC RELATED	1968	1917	-2.6%
ACCIDENT	29566	30194	2.1%
ALARM	28658	30371	6.0%
ANIMAL CONTROL <sup>3</sup>	208	258	24.0%
ASSAULT	3875	4056	4.7%
ASSAULT WITH DEADLY WEAPON	1472	1690	14.8%
ASSIST OTHER AGENCY	6774	7124	5.2%
BOMB THREAT	95	84	-11.6%
BREAK/ENTER	15502	17213	11.0%
CDCP CLINICIAN VISIT <sup>4</sup>	0	996	NA
COMMUNICATING THREATS	2874	2877	0.1%
COUNTY SECURITY <sup>3</sup>	8	7	-12.5%
CRIMINAL INTELLIGENCE	18	14	-22.2%
CRITICAL INCIDENT <sup>4</sup>	0	13	NA
DAMAGE TO PROPERTY	6686	6784	1.5%
DEATH	223	235	5.4%
DISTURBANCE	22691	24347	7.3%
DOMESTIC INCIDENT	31051	29794	-4.0%
DRUG RELATED	3377	3542	4.9%
EXTORTION/BLACKMAIL <sup>4</sup>	0	9	NA
FIGHT	2836	2827	-0.3%
FIRE	7	20	185.7%
FIRE CASE	69	61	-11.6%
FRAUD/FORGERY	2705	3268	20.8%
GAMBLING	16	8	-50.0%
HARASSMENT	1651	1411	-14.5%
HIT AND RUN	6328	6558	3.6%
JUVENILE RELATED	1940	1845	-4.9%
KIDNAPPING	177	203	14.7%
LAKE ENFORCEMENT	61	27	-55.7%
LARCENY	24851	25291	1.8%
LOITERING	4178	4869	16.5%
MAJOR INCIDENT	23	4	-82.6%
MISSING PERSON	5837	6040	3.5%
NOISE COMPLAINT	12410	13042	5.1%
OFFENSE AGAINST FAMILY	8	29	262.5%
OFFICER CALLED IN	623	469	-24.7%
OVERDOSE	346	49	-85.8%
PORNOGRAPHY	5	12	140.0%
PROPERTY	5478	6307	15.1%
PROSTITUTION	1118	1125	0.6%
PUBLIC SERVICE	19026	14772	-22.4%
QUALITY OF LIFE	1475	1013	-31.3%
ROBBERY	3106	2917	-6.1%
SEX CRIME	1017	1042	2.5%
SPECIAL SERVICE REQUEST	7	3	-57.1%
SUICIDE	962	1110	15.4%
SUSPICIOUS PERSON	16621	17904	7.7%
TRAFFIC RELATED	9344	9695	3.8%
TRESPASS	3762	3576	-4.9%
VEHICLE RELATED	28993	31177	7.5%
VIOLENT CRIMES TASK FORCE	1	2	100.0%
WARRANT RELATED	3041	2775	-8.7%
WEAPON RELATED	6653	7748	16.5%
ZONE CHECK-ADVISED EVENT <sup>4</sup>	0	12	NA
911 HANG UP / CALLBACK	22003	13416	-39.0%
<b>TOTAL</b>	<b>341724</b>	<b>342152</b>	<b>0.1%</b>

<sup>1</sup>These totals exclude duplicate and cancelled calls for service; they include calls handled by the Crime Reporting Unit as well as by division field officers, detectives and related CMPD staff.

<sup>2</sup>The type of call is determined from the 911 call, unless updated by an officer assigned to respond.

<sup>3</sup>In this summary, calls to Animal Control, Mecklenburg County Security, or Davidson Police are not included unless they also involve the dispatching of C-MPD field officers or detectives.

<sup>4</sup>This call type was not in use during the previous year and/or all of the current year.

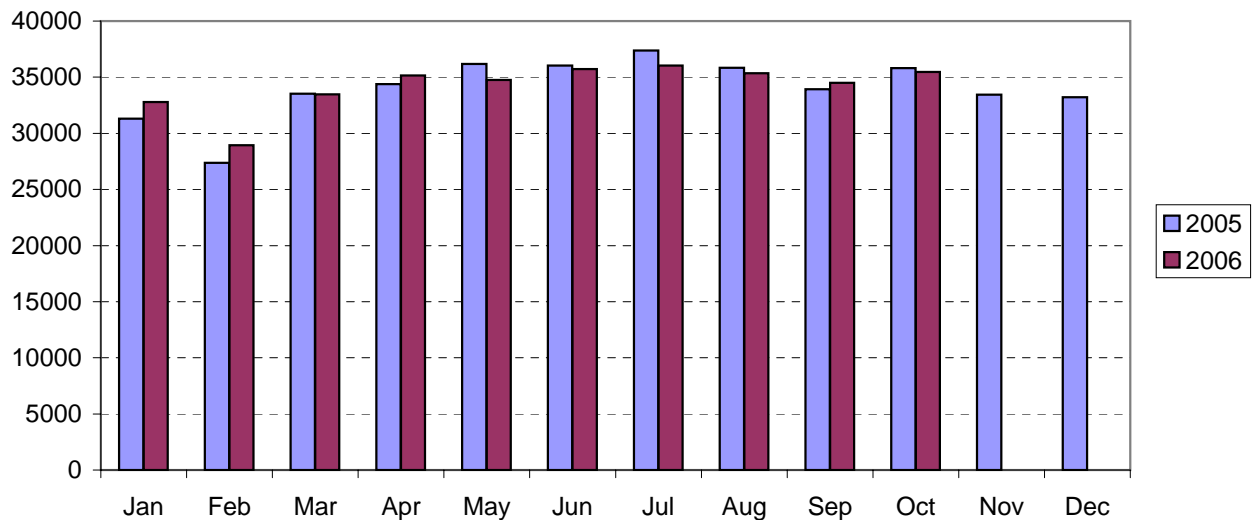
**CITIZEN-INITIATED CALLS FOR SERVICE BY ORIGINATING CMPD DIVISION<sup>1,2</sup>**  
 (Based on District of Call Origination, Not on Assigned District of Responding Units)

<u>District</u>	<u>2005 Year-to-Date Through October</u>	<u>2006 Year-to-Date Through October</u>	<u>Year-to-Date % Change</u>
Central-01 (D1)	21954	21779	-0.8%
Metro-02 (D2)	18841	19444	3.2%
Eastway-06 (C2)	25647	23761	-7.4%
North Tryon-07 (D3)	20639	21032	1.9%
North-11 (C1)	41798	45781	9.5%
Hickory Grove-12 (C3)	31723	32239	1.6%
Providence-16 (B1)	23632	23439	-0.8%
Independence-17 (B3)	29763	30025	0.9%
Steele Creek-21 (A1)	29772	30289	1.7%
South-22 (B2)	31038	30524	-1.7%
Westover-26 (A2)	23249	24642	6.0%
Freedom-27 (A3)	33674	35775	6.2%

<sup>1</sup>These totals exclude duplicate and cancelled calls for service; they include calls handled by the Crime Reporting Unit as well as by division field officers, detectives and other CMPD staff.

<sup>2</sup>Calls where the location could not be assigned to one of the divisions are not included in this chart.

**Citizen-Initiated Calls for Service<sup>1</sup> by Month**  
**Charlotte-Mecklenburg Police Department: 2005-2006**



<sup>1</sup>These totals exclude duplicate and cancelled calls for service; they include calls handled by the Crime Reporting Unit as well as by division field officers, detectives and other CMPD staff.

## Uniform Crime Reporting Procedures

The Charlotte-Mecklenburg Police Department reports offense and arrest statistics in accordance with standard Uniform Crime Reporting (UCR) guidelines. UCR policy states that any adjustments to previous months can be made on the current month's report:

...In tabulating crime counts, an agency may find that offense totals for past months require adjustments due to developments in the investigation or other handling of the matter. It may be necessary to adjust totals reported to UCR for the past month or prior months. Needed adjustments can be made on the current month's report and do not affect the reliability of the figures in that such adjustments tend to equalize each other from month to month over a period of time.

- *Uniform Crime Reporting Handbook*, FBI, 1984, p. 42-43

We are required to report crime monthly to the UCR program, and we do therefore make an effort to process monthly changes in a timely manner. However, occasionally due to the review and processing required for reclassifying, unbounding or clearing cases, the current month's totals may reflect the processing of a backlog of these changes from previous months.

Users of the data are cautioned that conclusions about substantial changes in crime trends or in clearance rates based on only a single month's data or trend may reflect some of these adjustments. For this reason, in addition to the monthly and year-to-date trends on Page 1, the monthly report routinely includes a comparison for the previous 12 months (p. 4), as well as graphs that provide seasonal/monthly comparisons over a five-year period (p. 5-8).

### UCR Definitions and Terms:

**Index Crime:** the eight offenses that the national UCR program tracks on a yearly basis to gauge trends in the extent of crime, despite differences among state and local criminal statutes. These offenses were selected on the basis of several factors: seriousness, frequency of occurrence, pervasiveness in all geographic areas, and/or likelihood of being reported to law enforcement.

**Violent Index:** includes the offenses of murder/non-negligent manslaughter, rape, robbery, and aggravated assault

**Property Index:** includes the offenses of burglary, larceny, vehicle theft and arson

**Murder/non-negligent manslaughter:** the willful killing of one human being by another

**Justifiable Homicide:** limited by UCR to either a killing by a law enforcement officer in the line of duty or a killing by a citizen of a felon during the commission of a felony. If a homicide is determined to be "justifiable" by this definition, it is subtracted from the murder/non-negligent manslaughter category after investigation.

**Rape:** the carnal knowledge of a female forcibly and against her will [Note: This offense does not include other sex offenses or statutory (non-forcible) rape.]

**Robbery:** the taking or attempt to take anything of value from the care, custody, or control of a person or persons by force, threat of force or violence, or by putting the victim in fear.

**Aggravated assault:** an unlawful attack by one person on another for the purpose of inflicting severe or aggravated bodily injury; includes 1) all assaults in which a weapon of any type is used or is threatened to be used and/or 2) all assaults where serious injury occurs.

**Burglary:** the unlawful entry or attempted entry of a structure to commit a felony or a theft

**Larceny-Theft:** the unlawful taking (or attempt), carrying, leading, or riding away of property from the possession or constructive possession of another [Note: Larceny/theft of a motor vehicle is classed separately.]



Vehicle Theft: the theft or attempted theft of a motor vehicle (a self-propelled vehicle that runs on land and not on rails, excluding farm and construction equipment)

Arson: the willful or malicious burning or attempt to burn, with or without intent to defraud, a structure, motor vehicle, personal property of another, etc.

Hierarchy rule: For cases involving multiple-offenses, the incident is classified and counted based on the highest offense on a hierarchy of crimes established by UCR. For example, for an incident involving a rape and a burglary, the incident would be counted in the rape category because rape is higher than burglary on the hierarchy.

Clearance: A case is considered cleared when either at least one arrest is made for the offense or when an offender's identity is established by investigation but the offender will not be arrested for reasons outside law enforcement control (offender dies, victim refuses to prosecute, district attorney declines prosecution, extradition is refused, etc.).

Unfounding: A case is "unfounded" and subtracted from the crime counts when investigation establishes that the incident did not actually occur or that the actions within the incident are not criminal based on current law.

For additional information, please consult the *UCR Handbook* on the FBI website at <http://www.fbi.gov/ucr/ucr.htm>.

This report was compiled by the Research, Planning, and Analysis Division.

We make an effort to present the most accurate information available at the time this report is published. Please notify the Research, Planning, and Analysis office if you have any questions about the data in this report or about an error that was missed in proofing the report.