



**CHARLOTTE-MECKLENBURG POLICE DEPARTMENT
MONTHLY SUMMARY REPORT
JULY, 2006**

**Darrel Stephens
Chief of Police**

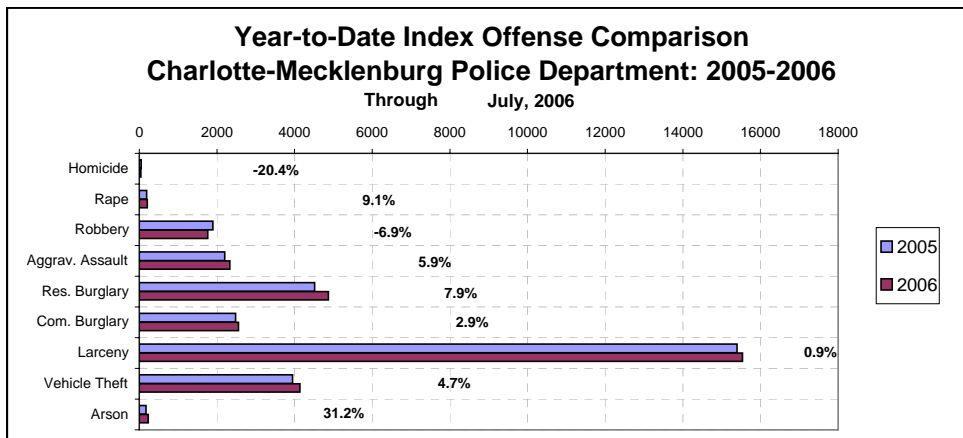
INDEX OFFENSES REPORTED TO CHARLOTTE-MECKLENBURG POLICE DEPARTMENT

July, 2006 INDEX OFFENSES	# THIS MONTH	% OF ALL INDEX	# LAST MONTH	MONTHLY % CHANGE	SAME MONTH LAST YEAR	MONTHLY % CHANGE	THIS YEAR TO DATE	LAST YEAR TO DATE	ANNUAL % CHANGE
HOMICIDE (MURDER & NON- NEGLIGENT MANSLAUGHTER)	5	0.1%	6	-16.7%	12	-58.3%	39	49	-20.4%
RAPE TOTAL	30	0.6%	34	-11.8%	30	0.0%	204	187	9.1%
ACTUAL	28	0.5%	30	-6.7%	29	-3.4%	185	176	5.1%
ATTEMPT	2	0.0%	4	-50.0%	1	100.0%	19	11	72.7%
ROBBERY TOTAL	328	6.3%	302	8.6%	316	3.8%	1764	1895	-6.9%
ARMED	276	5.3%	228	21.1%	247	11.7%	1396	1522	-8.3%
STRONG-ARM	52	1.0%	74	-29.7%	69	-24.6%	368	373	-1.3%
AGGRAVATED ASSAULT TOTAL	434	8.4%	372	16.7%	385	12.7%	2332	2202	5.9%
BURGLARY TOTAL	1165	22.5%	1112	4.8%	1046	11.4%	7447	6999	6.4%
RESIDENTIAL	711	13.7%	723	-1.7%	682	4.3%	4874	4518	7.9%
COMMERCIAL	454	8.8%	389	16.7%	364	24.7%	2553	2481	2.9%

FORCE	924	17.8%	879	5.1%	860	7.4%	6015	5710	5.3%
NO FORCE	154	3.0%	157	-1.9%	120	28.3%	882	845	4.4%
ATTEMPT	87	1.7%	76	14.5%	66	31.8%	550	444	23.9%
LARCENY TOTAL	2519	48.6%	2615	-3.7%	2316	8.8%	15539	15396	0.9%
\$200 AND OVER	1295	25.0%	1365	-5.1%	1146	13.0%	7939	7566	4.9%
\$50 TO \$200	478	9.2%	514	-7.0%	437	9.4%	2970	3013	-1.4%
UNDER \$50	746	14.4%	736	1.4%	733	1.8%	4630	4817	-3.9%

FROM AUTO	1409	27.2%	1371	2.8%	1144	23.2%	8099	7686	5.4%
BICYCLE	36	0.7%	28	28.6%	32	12.5%	127	125	1.6%
SHOPLIFTING	217	4.2%	257	-15.6%	227	-4.4%	1584	1503	5.4%
OTHERS	857	16.5%	959	-10.6%	913	-6.1%	5729	6082	-5.8%
VEHICLE THEFT TOTAL	672	13.0%	708	-5.1%	600	12.0%	4136	3950	4.7%
ARSON TOTAL	35	0.7%	26	34.6%	31	12.9%	227	173	31.2%
TOTALS	5188	100.0%	5175	0.3%	4736	9.5%	31688	30851	2.7%
VIOLENT PROPERTY	797 4391	15.4% 84.6%	714 4461	11.6% -1.6%	743 3993	7.3% 10.0%	4339 27349	4333 26518	0.1% 3.1%

NOTE: These totals include offenses reported to the Charlotte-Mecklenburg Police Department in accordance with the Uniform Crime Reporting Program. Totals for homicide do not include cases investigated by the police but classed by UCR guidelines as negligent manslaughter or as "justifiable homicide."

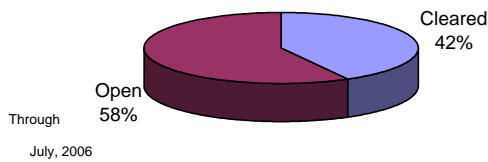


INDEX CLEARANCES REPORTED BY THE CHARLOTTE-MECKLENBURG POLICE DEPARTMENT

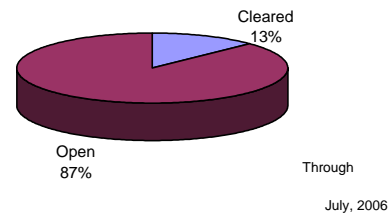
July, 2006 INDEX CLEARANCES	THIS MONTH:		LAST MONTH:		SAME MO. LAST YR:		THIS YEAR TO DATE:		LAST YEAR TO DATE:	
	NO.	%	NO.	%	NO.	%	NO.	%	NO.	%
MURDER & NON-NEGLIGENT MANSLAUGHTER ¹	2	40.0%	9	150.0%	1	8.3%	27	69.2%	17	34.7%
RAPE TOTAL	23	76.7%	20	58.8%	21	70.0%	149	73.0%	151	80.7%
ACTUAL	20	71.4%	18	60.0%	20	69.0%	135	73.0%	145	82.4%
ATTEMPT	3	150.0%	2	50.0%	1	100.0%	14	73.7%	16	145.5%
ROBBERY TOTAL	88	26.8%	67	22.2%	76	24.1%	522	29.6%	439	23.2%
ARMED	68	24.6%	53	23.2%	63	25.5%	408	29.2%	339	22.3%
STRONG-ARM	20	38.5%	14	18.9%	13	18.8%	114	31.0%	100	26.8%
AGGRAVATED ASSAULT TOTAL	168	38.7%	163	43.8%	222	57.7%	1116	47.9%	1140	51.8%
BURGLARY TOTAL	93	8.0%	96	8.6%	102	9.8%	631	8.5%	826	11.8%
RESIDENTIAL	58	8.2%	63	8.7%	68	10.0%	467	9.6%	647	14.3%
COMMERCIAL	35	7.7%	33	8.5%	34	9.3%	164	6.4%	179	7.2%
LARCENY TOTAL	312	12.4%	330	12.6%	362	15.6%	2334	15.0%	2307	15.0%
FROM AUTO	37	2.6%	25	1.8%	36	3.1%	260	3.2%	307	4.0%
BICYCLE	4	11.1%	5	17.9%	5	15.6%	12	9.4%	18	14.4%
SHOPLIFTING	139	64.1%	160	62.3%	158	69.6%	1030	65.0%	1019	67.8%
OTHERS	132	15.4%	140	14.6%	163	17.9%	1032	18.0%	963	15.8%
VEHICLE THEFT TOTAL	63	9.4%	78	11.0%	103	17.2%	476	11.5%	653	16.5%
ARSON TOTAL	8	22.9%	8	30.8%	5	16.1%	60	26.4%	39	22.5%
TOTALS	757	14.6%	771	14.9%	892	18.8%	5315	16.8%	5572	18.1%
VIOLENT PROPERTY	281	35.3%	259	36.3%	320	43.1%	1814	41.8%	1747	40.3%
	476	10.8%	512	11.5%	572	14.3%	3501	12.8%	3825	14.4%

¹NOTE : Clearances are reported in accordance with Uniform Crime Report guidelines. Since clearances are not counted for UCR until they are entered in the Records Management system, any delays in entry of the documentation may result in some clearances being reported later in succeeding months. Clearances for homicides from years prior to the automated KBCOPS Records and Case Management modules were counted in the December clearances.

**Year-to-Date Violent Index Clearance Rate
Charlotte-Mecklenburg Police Department: 2006**

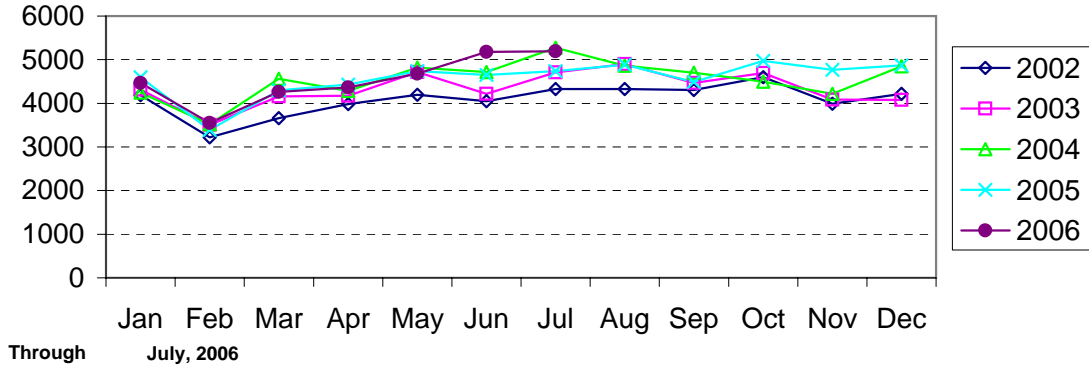


**Year-to-Date Property Index Clearance Rate
Charlotte-Mecklenburg Police Department: 2006**

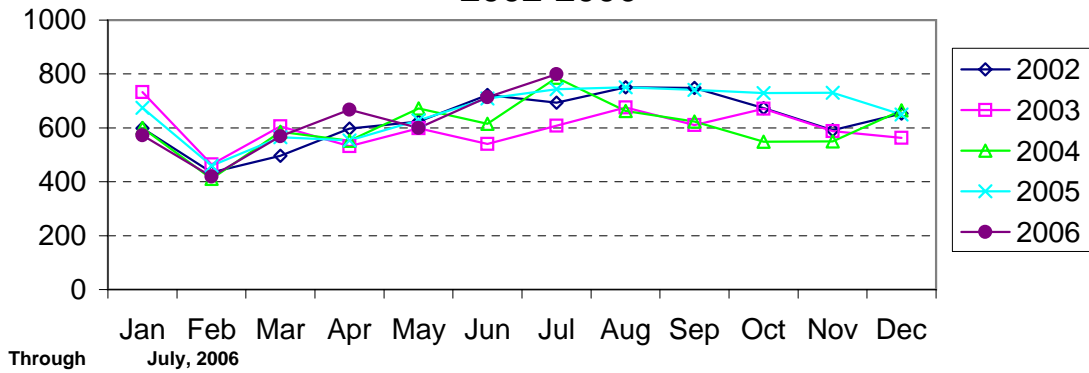


Clearance rates for crime reporting are calculated by dividing the number of crimes cleared during a designated time span by the number of crimes reported in the same period and converting the result to a percentage (multiplying by 100). Since cases from previous reporting periods can be cleared during the designated time span, the rate may be higher than 100%.

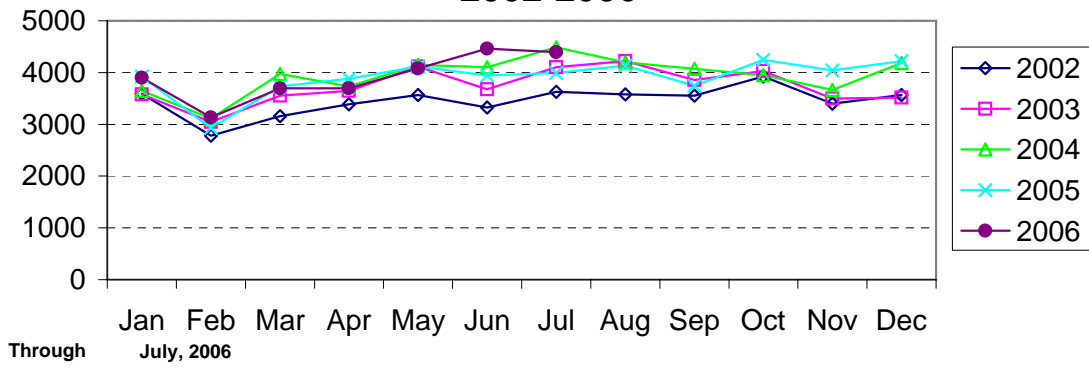
Index Offenses Reported by Month Charlotte-Mecklenburg Police Department: 2002-2006



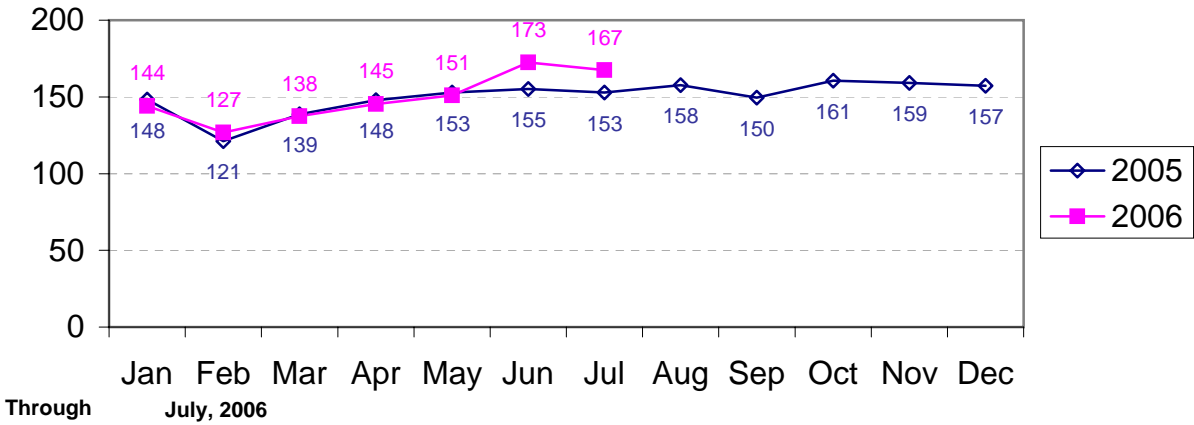
Violent Index Offenses Reported by Month Charlotte-Mecklenburg Police Department: 2002-2006



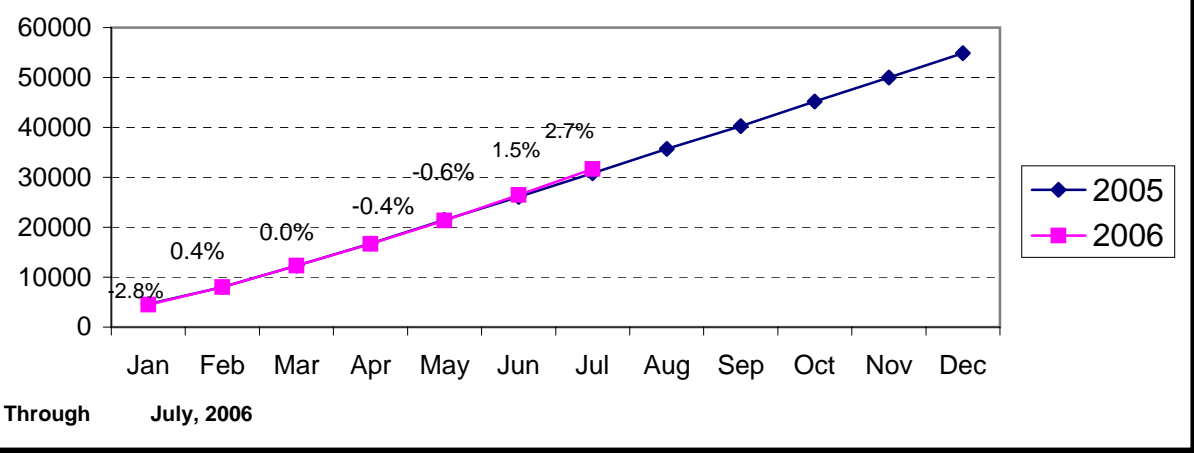
Property Index Offenses Reported by Month Charlotte-Mecklenburg Police Department: 2002-2006



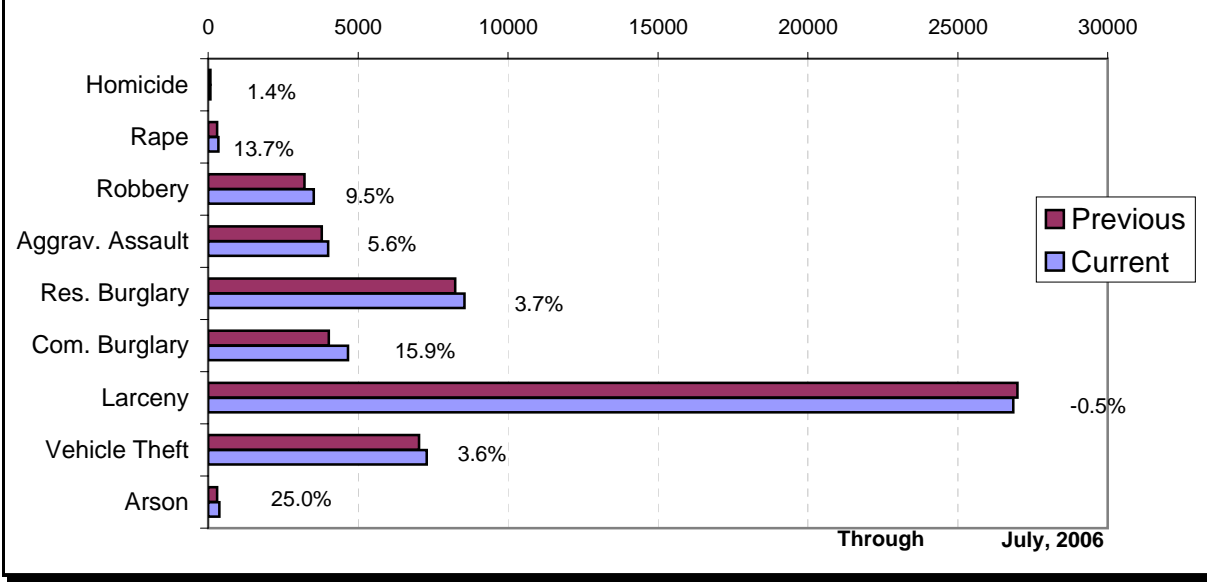
Index Offense Per Day Average by Month Charlotte-Mecklenburg Police Department: 2005-2006



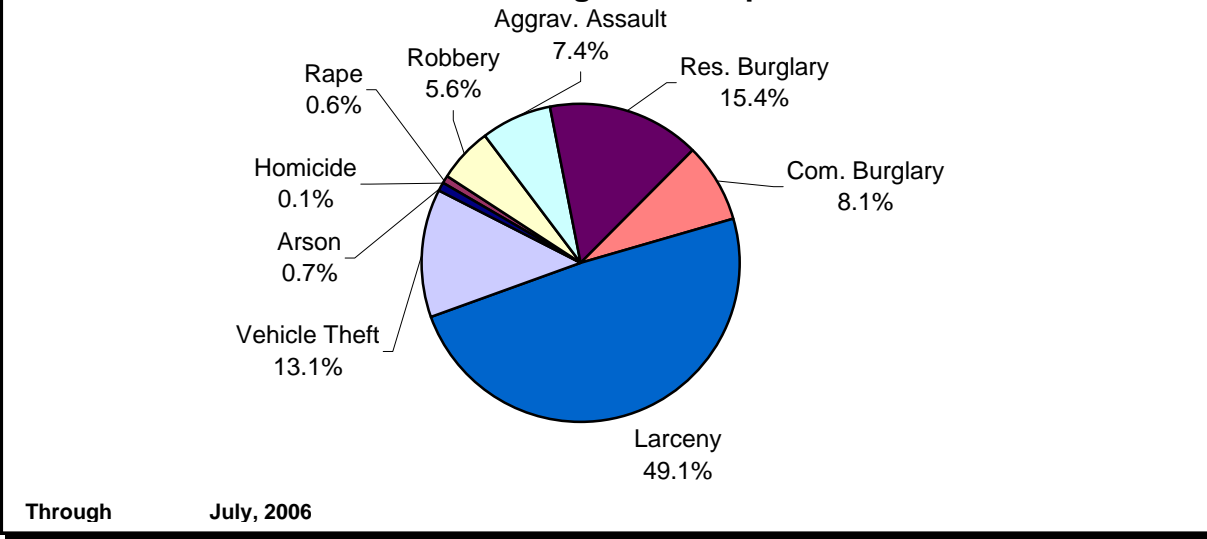
Index Offenses Year-to-Date Cumulative Totals Charlotte-Mecklenburg Police Department: 2005-2006



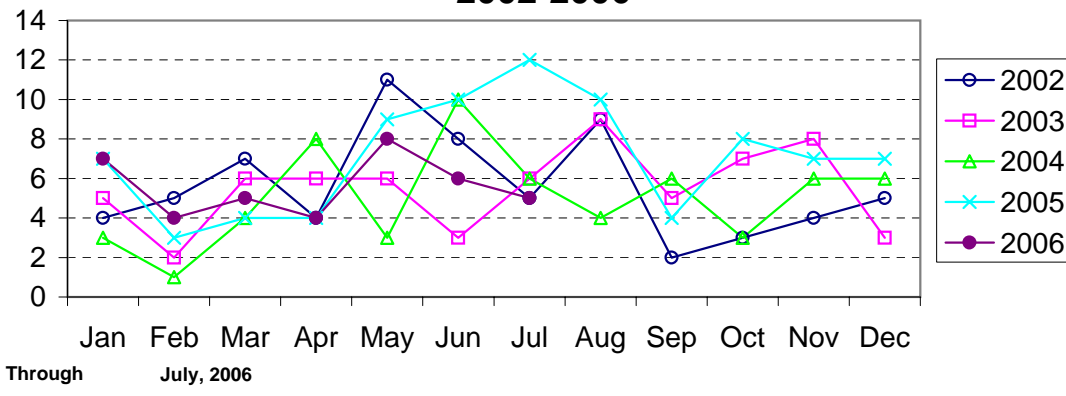
Index Offenses in Current & Previous 12 Month Periods Charlotte-Mecklenburg Police Department



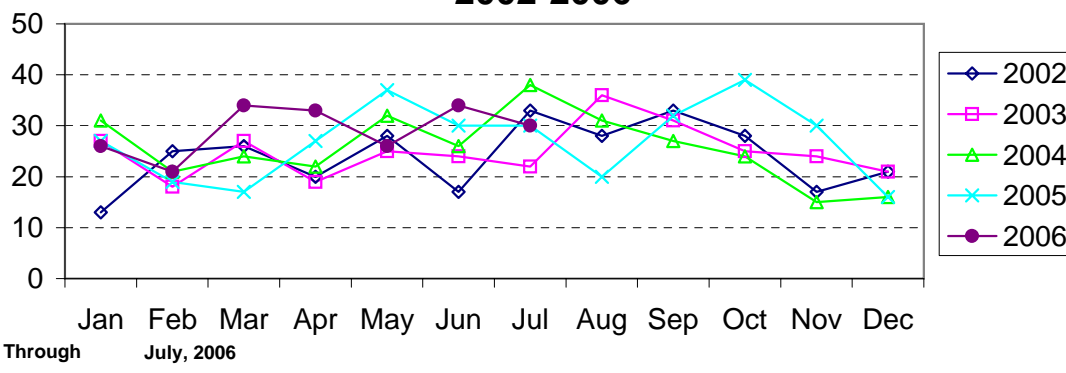
Year-to-Date Index Offenses by Type Charlotte-Mecklenburg Police Department: 2006



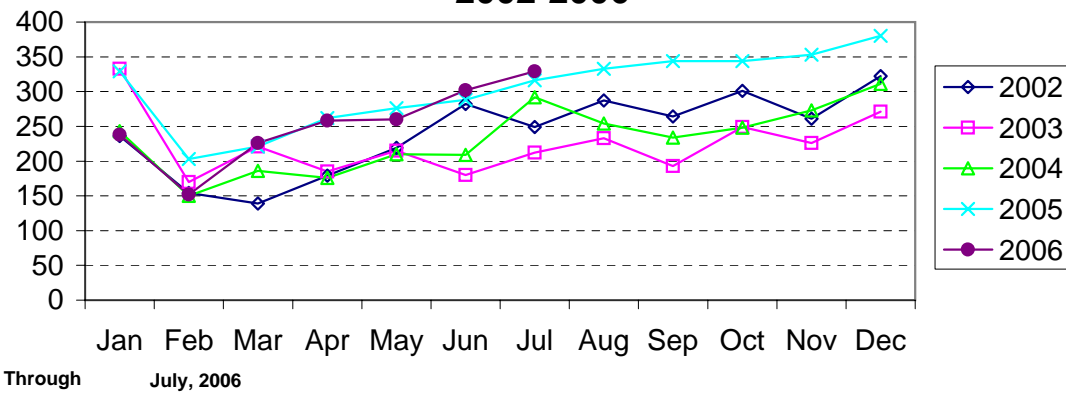
Homicide Reported by Month Charlotte-Mecklenburg Police Department: 2002-2006



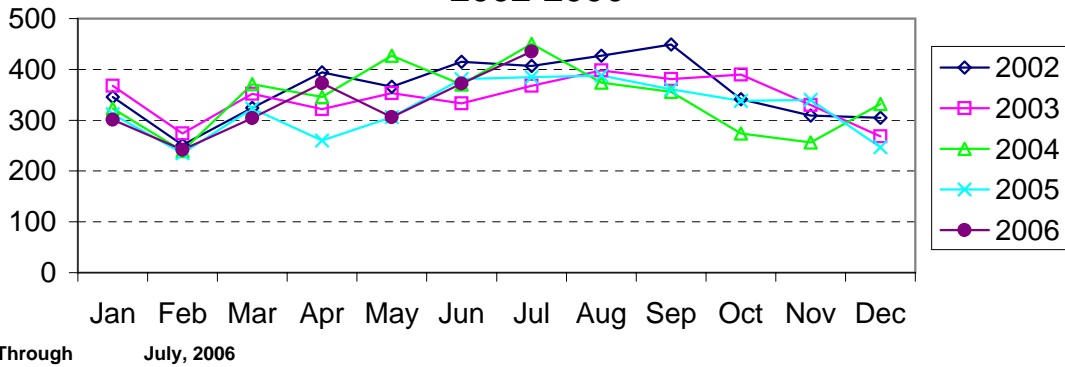
Rape Reported by Month Charlotte-Mecklenburg Police Department: 2002-2006



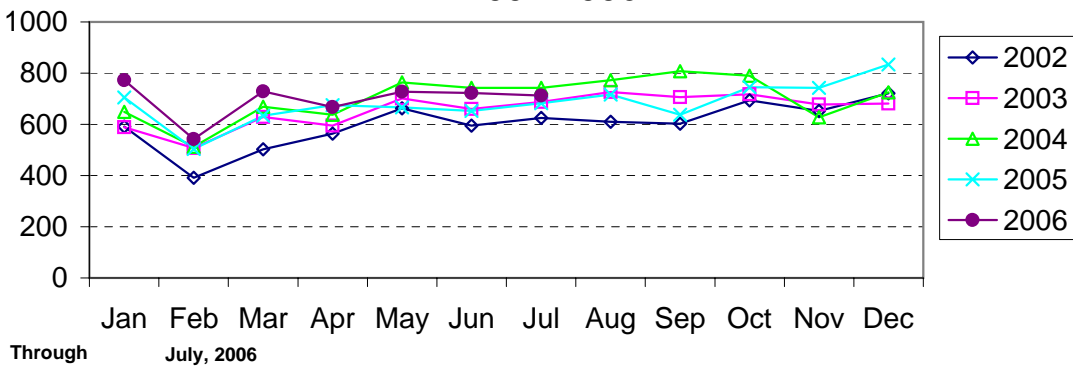
Robbery Reported by Month Charlotte-Mecklenburg Police Department: 2002-2006



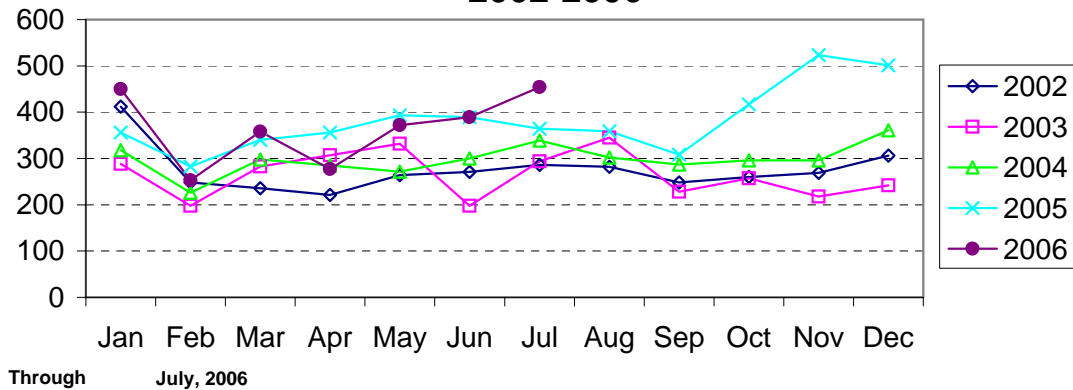
Aggravated Assault Reported by Month Charlotte-Mecklenburg Police Department: 2002-2006



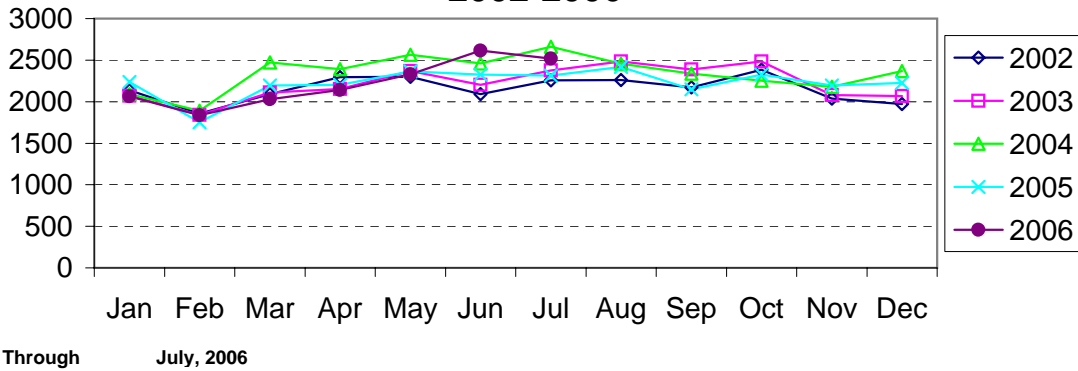
Residential Burglary Reported by Month Charlotte-Mecklenburg Police Department: 2002-2006



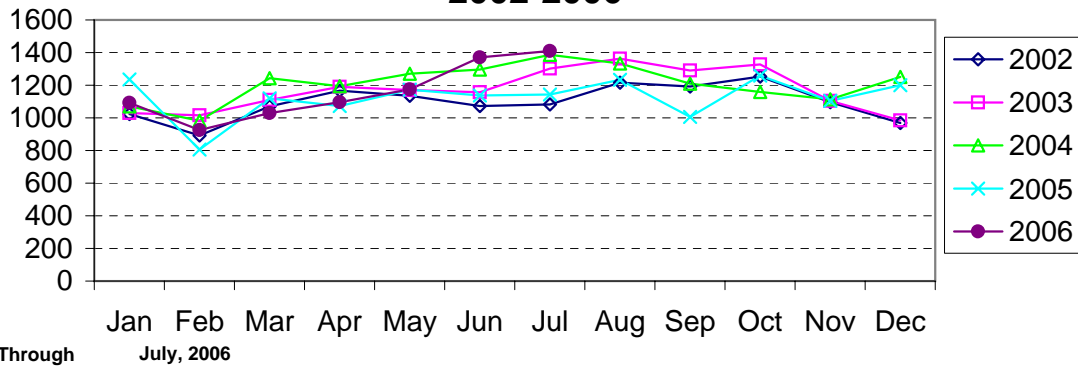
Commercial Burglary Reported by Month Charlotte-Mecklenburg Police Department: 2002-2006



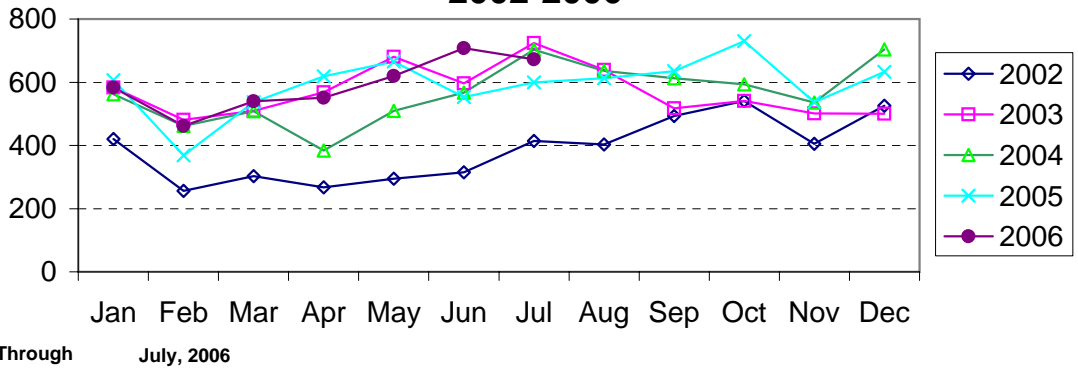
Larceny Reported by Month Charlotte-Mecklenburg Police Department: 2002-2006



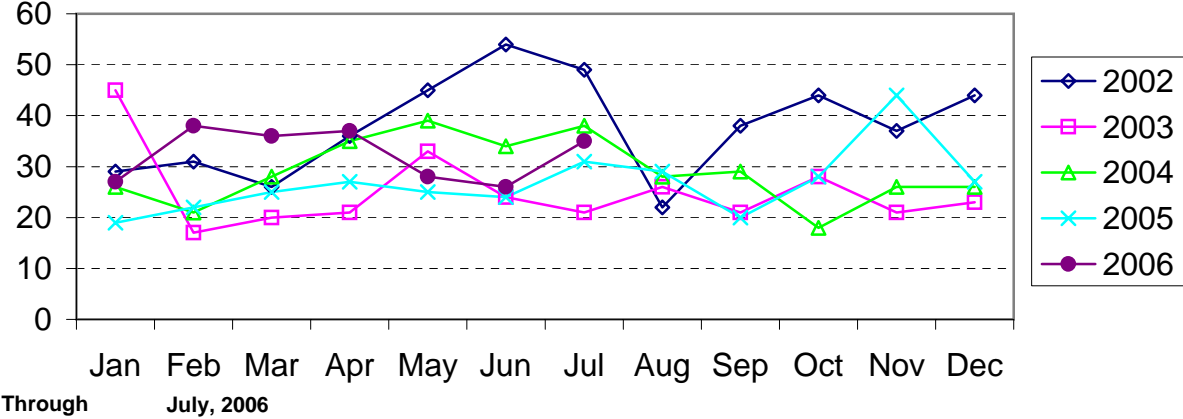
Larceny from Vehicle Reported by Month Charlotte-Mecklenburg Police Department: 2002-2006



Vehicle Theft Reported by Month Charlotte-Mecklenburg Police Department: 2002-2006



Arson Reported by Month Charlotte-Mecklenburg Police Department: 2002-2006



Index Offenses Reported by Division and Service Area of Occurrence									
West Service Area: July, 2005-2006									
INDEX_CATEGORIES	Westover (A2)			Freedom (A3)			West Service Area		
	2005	2006	% Change	2005	2006	% Change	2005	2006	% Change
MURDER & NON-NEGLIGENT MANSLAUGHTER	3	2	-33.3%	8	5	-37.5%	11	7	-36.4%
RAPE	15	15	0.0%	16	20	25.0%	31	35	12.9%
ACTUAL	14	14	0.0%	15	20	33.3%	29	34	17.2%
ATTEMPTED	1	1	0.0%	1	0	-100.0%	2	1	-50.0%
ROBBERY	146	164	12.3%	252	205	-18.7%	398	369	-7.3%
ARMED	116	127	9.5%	223	163	-26.9%	339	290	-14.5%
STRONG-ARM	30	37	23.3%	29	42	44.8%	59	79	33.9%
AGGRAVATED ASSAULT	274	344	25.5%	281	323	14.9%	555	667	20.2%
BURGLARY	566	585	3.4%	965	994	3.0%	1531	1579	3.1%
RESIDENTIAL	313	399	27.5%	591	603	2.0%	904	1002	10.8%
COMMERCIAL	253	186	-26.5%	374	391	4.5%	627	577	-8.0%
LARCENY	1021	980	-4.0%	1423	1618	13.7%	2444	2598	6.3%
FROM AUTO	481	452	-6.0%	636	729	14.6%	1117	1181	5.7%
BICYCLE	3	11	266.7%	10	10	0.0%	13	21	61.5%
SHOPLIFTING	82	111	35.4%	126	206	63.5%	208	317	52.4%
OTHERS	455	406	-10.8%	651	673	3.4%	1106	1079	-2.4%
VEHICLE THEFT	302	412	36.4%	378	450	19.0%	680	862	26.8%
ARSON	14	15	7.1%	23	32	39.1%	37	47	27.0%
TOTALS	2341	2517	7.5%	3346	3647	9.0%	5687	6164	8.4%
VIOLENT	438	525	19.9%	557	553	-0.7%	995	1078	8.3%
PROPERTY	1903	1992	4.7%	2789	3094	10.9%	4692	5086	8.4%

Index Offenses Reported by Division and Service Area of Occurrence									
Southeast Service Area: July, 2005-2006									
INDEX_CATEGORIES	Providence (B1)			Independence (B3)			Southeast Service Area		
	2005	2006	% Change	2005	2006	% Change	2005	2006	% Change
MURDER & NON-NEGLIGENT MANSLAUGHTER	3	3	0.0%	4	2	-50.0%	7	5	-28.6%
RAPE	12	13	8.3%	16	21	31.3%	28	34	21.4%
ACTUAL	12	11	-8.3%	14	18	28.6%	26	29	11.5%
ATTEMPTED	0	2	NA	2	3	50.0%	2	5	150.0%
ROBBERY	72	72	0.0%	153	159	3.9%	225	231	2.7%
ARMED	55	46	-16.4%	127	139	9.4%	182	185	1.6%
STRONG-ARM	17	26	52.9%	26	20	-23.1%	43	46	7.0%
AGGRAVATED ASSAULT	74	87	17.6%	164	160	-2.4%	238	247	3.8%
BURGLARY	525	447	-14.9%	542	642	18.5%	1067	1089	2.1%
RESIDENTIAL	343	288	-16.0%	421	517	22.8%	764	805	5.4%
COMMERCIAL	182	159	-12.6%	121	125	3.3%	303	284	-6.3%
LARCENY	1120	1122	0.2%	1338	1225	-8.4%	2458	2347	-4.5%
FROM AUTO	487	566	16.2%	720	621	-13.8%	1207	1187	-1.7%
BICYCLE	13	12	-7.7%	9	19	111.1%	22	31	40.9%
SHOPLIFTING	138	157	13.8%	144	130	-9.7%	282	287	1.8%
OTHERS	482	387	-19.7%	465	455	-2.2%	947	842	-11.1%
VEHICLE THEFT	181	233	28.7%	436	365	-16.3%	617	598	-3.1%
ARSON	7	9	28.6%	21	10	-52.4%	28	19	-32.1%
TOTALS	1994	1986	-0.4%	2674	2584	-3.4%	4668	4570	-2.1%
VIOLENT	161	175	8.7%	337	342	1.5%	498	517	3.8%
PROPERTY	1833	1811	-1.2%	2337	2242	-4.1%	4170	4053	-2.8%

The data in the district breakdowns does not include a small number of offenses in which the offense location (or reporting location if offense location was unknown) was entered without one of the 12 valid division assignments. Districts are not equal in geographic size, demographics, zoning/development, and other factors that influence the rate of crimes committed in an area. Therefore, the comparison of raw offense totals across districts is **not** advisable.

Index Offenses Reported by Division and Service Area of Occurrence									
Northeast Service Area: July, 2005-2006									
INDEX_CATEGORIES	North (C1)			Hickory Grove (C3)			Northeast Service Area		
	2005	2006	% Change	2005	2006	% Change	2005	2006	% Change
MURDER & NON-NEGLIGENT MANSLAUGHTER	9	4	-55.6%	5	3	-40.0%	14	7	-50.0%
RAPE	21	36	71.4%	23	18	-21.7%	44	54	22.7%
ACTUAL	19	35	84.2%	21	15	-28.6%	40	50	25.0%
ATTEMPTED	2	1	-50.0%	2	3	50.0%	4	4	0.0%
ROBBERY	144	195	35.4%	171	187	9.4%	315	382	21.3%
ARMED	123	169	37.4%	135	148	9.6%	258	317	22.9%
STRONG-ARM	21	26	23.8%	36	39	8.3%	57	65	14.0%
AGGRAVATED ASSAULT	194	205	5.7%	229	205	-10.5%	423	410	-3.1%
BURGLARY	891	1160	30.2%	883	1075	21.7%	1774	2235	26.0%
RESIDENTIAL	594	795	33.8%	553	689	24.6%	1147	1484	29.4%
COMMERCIAL*	297	365	22.9%	330	386	17.0%	627	751	19.8%
LARCENY	2487	2641	6.2%	1189	1070	-10.0%	3676	3711	1.0%
FROM AUTO	1373	1476	7.5%	630	568	-9.8%	2003	2044	2.0%
BICYCLE	15	55	266.7%	22	18	-18.2%	37	73	97.3%
SHOPLIFTING	225	243	8.0%	108	79	-26.9%	333	322	-3.3%
OTHERS	874	867	-0.8%	429	405	-5.6%	1303	1272	-2.4%
VEHICLE THEFT	550	572	4.0%	439	351	-20.0%	989	923	-6.7%
ARSON	27	32	18.5%	22	24	9.1%	49	56	14.3%
TOTALS	4323	4845	12.1%	2961	2933	-0.9%	7284	7778	6.8%
VIOLENT	368	440	19.6%	428	413	-3.5%	796	853	7.2%
PROPERTY	3955	4405	11.4%	2533	2520	-0.5%	6488	6925	6.7%

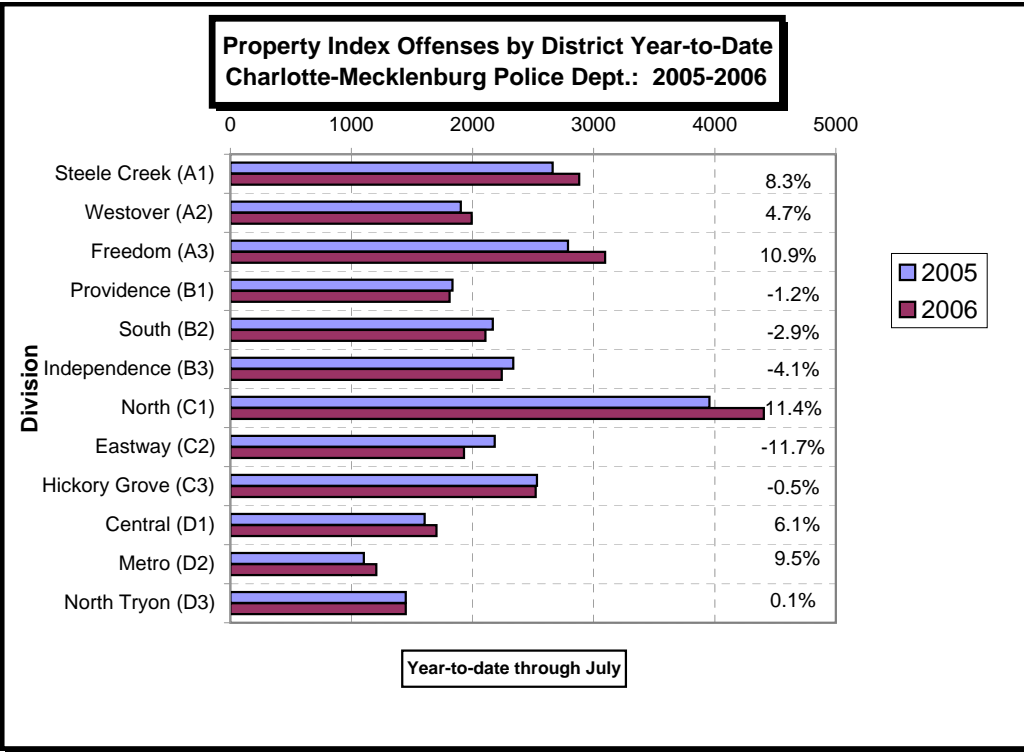
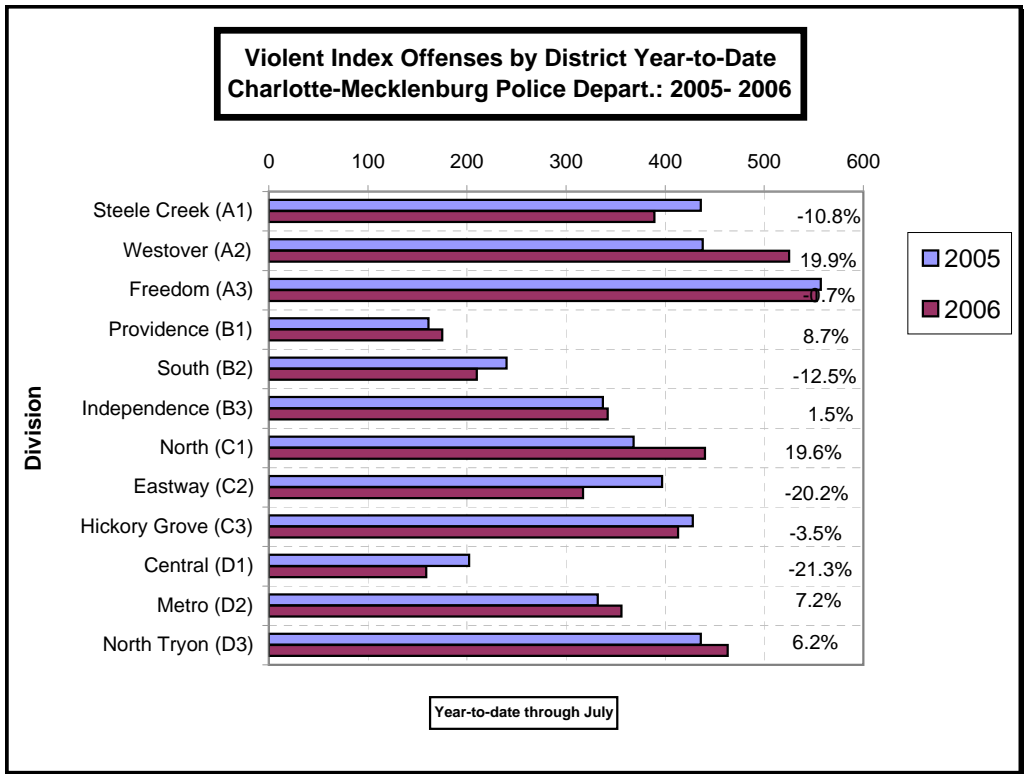
Index Offenses Reported by Division and Service Area of Occurrence									
Central Service Area: July, 2005-2006									
INDEX_CATEGORIES	Central (D1)			Metro (D2)			Central Service Area		
	2005	2006	% Change	2005	2006	% Change	2005	2006	% Change
MURDER & NON-NEGLIGENT MANSLAUGHTER	2	2	0.0%	6	3	-50.0%	8	5	-37.5%
RAPE	20	19	-5.0%	4	13	225.0%	24	32	33.3%
ACTUAL	19	18	-5.3%	5	13	160.0%	24	31	29.2%
ATTEMPTED	1	1	0.0%	-1	0	-100.0%	0	1	NA
ROBBERY	109	76	-30.3%	126	97	-23.0%	235	173	-26.4%
ARMED	65	45	-30.8%	96	70	-27.1%	161	115	-28.6%
STRONG-ARM	44	31	-29.5%	30	27	-10.0%	74	58	-21.6%
AGGRAVATED ASSAULT	71	62	-12.7%	196	243	24.0%	267	305	14.2%
BURGLARY	215	198	-7.9%	366	358	-2.2%	581	556	-4.3%
RESIDENTIAL	73	79	8.2%	282	222	-21.3%	355	301	-15.2%
COMMERCIAL	142	119	-16.2%	84	136	61.9%	226	255	12.8%
LARCENY	1197	1219	1.8%	518	585	12.9%	1715	1804	5.2%
FROM AUTO	642	696	8.4%	220	274	24.5%	862	970	12.5%
BICYCLE	16	5	-68.8%	9	5	-44.4%	25	10	-60.0%
SHOPLIFTING	34	56	64.7%	20	17	-15.0%	54	73	35.2%
OTHERS	505	462	-8.5%	269	289	7.4%	774	751	-3.0%
VEHICLE THEFT	191	271	41.9%	206	254	23.3%	397	525	32.2%
ARSON	0	13	NA	11	9	-18.2%	11	22	100.0%
TOTALS	1805	1860	3.0%	1433	1562	9.0%	3238	3422	5.7%
VIOLENT	202	159	-21.3%	332	356	7.2%	534	515	-3.6%
PROPERTY	1603	1701	6.1%	1101	1206	9.5%	2704	2907	7.5%

The data in the district breakdowns does not include a small number of offenses in which the offense location (or reporting location if offense location was unknown) was entered without one of the 12 valid division assignments. Districts are not equal in geographic size, demographics, zoning/development, and other factors that influence the rate of crimes committed in an area. Therefore, the comparison of raw offense totals across districts is **not** advisable.

Index Offenses Reported by Division and Service Area of Occurrence									
East Service Area: July, 2005-2006									
INDEX_CATEGORIES	Eastway (C2)			North Tryon (D3)			East Service Area		
	2005	2006	% Change	2005	2006	% Change	2005	2006	% Change
MURDER & NON-NEGLIGENT MANSLAUGHTER	2	2	0.0%	3	5	66.7%	5	7	40.0%
RAPE	18	14	-22.2%	9	7	-22.2%	27	21	-22.2%
ACTUAL	17	12	-29.4%	7	7	0.0%	24	19	-20.8%
ATTEMPTED	1	2	100.0%	2	0	-100.0%	3	2	-33.3%
ROBBERY	227	171	-24.7%	194	189	-2.6%	421	360	-14.5%
ARMED	173	141	-18.5%	155	149	-3.9%	328	290	-11.6%
STRONG-ARM	54	30	-44.4%	39	40	2.6%	93	70	-24.7%
AGGRAVATED ASSAULT	150	130	-13.3%	230	262	13.9%	380	392	3.2%
BURGLARY	574	495	-13.8%	468	512	9.4%	1042	1007	-3.4%
RESIDENTIAL	417	362	-13.2%	279	290	3.9%	696	652	-6.3%
COMMERCIAL	157	133	-15.3%	192	222	15.6%	349	355	1.7%
LARCENY	1290	1098	-14.9%	731	669	-8.5%	2021	1767	-12.6%
FROM AUTO	482	476	-1.2%	358	328	-8.4%	840	804	-4.3%
BICYCLE	12	42	250.0%	4	6	50.0%	16	48	200.0%
SHOPLIFTING	333	205	-38.4%	42	43	2.4%	375	248	-33.9%
OTHERS	463	375	-19.0%	327	292	-10.7%	790	667	-15.6%
VEHICLE THEFT	306	330	7.8%	244	251	2.9%	550	581	5.6%
ARSON	14	6	-57.1%	5	17	240.0%	19	23	21.1%
TOTALS	2581	2246	-13.0%	1884	1912	1.5%	4465	4158	-6.9%
VIOLENT	397	317	-20.2%	436	463	6.2%	833	780	-6.4%
PROPERTY	2184	1929	-11.7%	1448	1449	0.1%	3632	3378	-7.0%

Index Offenses Reported by Division and Service Area of Occurrence									
South Service Area: July, 2005-2006									
INDEX_CATEGORIES	Steele Creek (A1)			South (B2)			South Service Area		
	2005	2006	% Change	2005	2006	% Change	2005	2006	% Change
MURDER & NON-NEGLIGENT MANSLAUGHTER	4	4	0.0%	0	4	NA	4	8	100.0%
RAPE	22	20	-9.1%	10	8	-20.0%	32	28	-12.5%
ACTUAL	22	16	-27.3%	10	6	-40.0%	32	22	-31.3%
ATTEMPTED	0	4	NA	0	2	NA	0	6	NA
ROBBERY	179	163	-8.9%	122	87	-28.7%	301	250	-16.9%
ARMED	149	131	-12.1%	105	69	-34.3%	254	200	-21.3%
STRONG-ARM	30	32	6.7%	17	18	5.9%	47	50	6.4%
AGGRAVATED ASSAULT	231	202	-12.6%	108	111	2.8%	339	313	-7.7%
BURGLARY	509	549	7.9%	494	429	-13.2%	1003	978	-2.5%
RESIDENTIAL	308	334	8.4%	346	313	-9.5%	654	647	-1.1%
COMMERCIAL	201	215	7.0%	148	116	-21.6%	349	331	-5.2%
LARCENY	1705	1911	12.1%	1377	1392	1.1%	3082	3303	7.2%
FROM AUTO	901	1104	22.5%	756	804	6.3%	1657	1908	15.1%
BICYCLE	6	9	50.0%	6	7	16.7%	12	16	33.3%
SHOPLIFTING	147	140	-4.8%	104	125	20.2%	251	265	5.6%
OTHERS	651	658	1.1%	511	456	-10.8%	1162	1114	-4.1%
VEHICLE THEFT	433	392	-9.5%	281	252	-10.3%	714	644	-9.8%
ARSON	13	28	115.4%	16	32	100.0%	29	60	106.9%
TOTALS	3096	3269	5.6%	2408	2315	-3.9%	5504	5584	1.5%
VIOLENT	436	389	-10.8%	240	210	-12.5%	676	599	-11.4%
PROPERTY	2660	2880	8.3%	2168	2105	-2.9%	4828	4985	3.3%

The data in the district breakdowns does not include a small number of offenses in which the offense location (or reporting location if offense location was unknown) was entered without one of the 12 valid division assignments. Districts are not equal in geographic size, demographics, zoning/development, and other factors that influence the rate of crimes committed in an area. Therefore, the comparison of raw offense totals across districts is **not** advisable.



The data in the district breakdowns does not include a small number of offenses in which the offense location (or reporting location if offense location was unknown) was entered without one of the 12 valid division assignments. Districts are not equal in geographic size, demographics, zoning/development, and other factors that influence the rate of crimes committed in an area. Therefore, the comparison of raw offense totals across districts is **not** advisable.

Arrests by Charlotte-Mecklenburg Police Department
Year-To-Date: 2005-2006
(Through July)

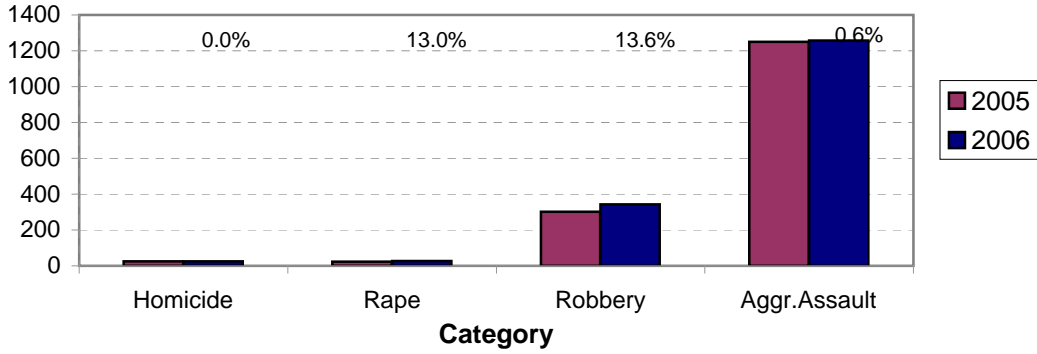
CATEGORY	ADULTS (AGE 18 & OLDER):			JUVENILES (UNDER 18):			TOTAL ARRESTS:		
	2005 Y-T-D	2006 Y-T-D	% CHANGE	2005 Y-T-D	2006 Y-T-D	% CHANGE	2005 Y-T-D	2006 Y-T-D	% CHANGE
Murder/Non-Negligent Manslaughter	23	25	8.7%	2	0	-100.0%	25	25	0.0%
Negligent & Vehicular Manslaughter	3	1	-66.7%	0	0	NA	3	1	-66.7%
Rape	22	21	-4.5%	1	5	400.0%	23	26	13.0%
Robbery	237	238	0.4%	64	104	62.5%	301	342	13.6%
Aggravated Assault	1094	1084	-0.9%	156	174	11.5%	1250	1258	0.6%
Burglary	366	417	13.9%	140	139	-0.7%	506	556	9.9%
Larceny	898	814	-9.4%	307	329	7.2%	1205	1143	-5.1%
Vehicle Theft	61	54	-11.5%	64	56	-12.5%	125	110	-12.0%
Non-Aggravated Assault	1174	1174	0.0%	463	405	-12.5%	1637	1579	-3.5%
Arson	6	8	33.3%	18	15	-16.7%	24	23	-4.2%
Forgery/Counterfeit	81	99	22.2%	2	0	-100.0%	83	99	19.3%
Fraud	333	345	3.6%	4	4	0.0%	337	349	3.6%
Embezzlement	44	56	27.3%	4	5	25.0%	48	61	27.1%
Stolen Property	280	329	17.5%	73	96	31.5%	353	425	20.4%
Vandalism	123	162	31.7%	142	142	0.0%	265	304	14.7%
Weapons	349	494	41.5%	42	47	11.9%	391	541	38.4%
Prostitution	166	125	-24.7%	2	3	50.0%	168	128	-23.8%
Sex Offenses	104	113	8.7%	16	9	-43.8%	120	122	1.7%
Drugs	1564	1882	20.3%	160	216	35.0%	1724	2098	21.7%
Gambling	2	2	0.0%	0	0	NA	2	2	0.0%
Offenses vs. Family	4	4	0.0%	0	0	NA	4	4	0.0%
DUI	1181	1156	-2.1%	5	11	120.0%	1186	1167	-1.6%
Liquor	105	130	23.8%	5	4	-20.0%	110	134	21.8%
Disorder Conduct	299	363	21.4%	193	186	-3.6%	492	549	11.6%
Other Non-Traffic	4696	5301	12.9%	463	653	41.0%	5159	5954	15.4%
VIOLENT INDEX¹	1376	1368	-0.6%	223	283	26.9%	1599	1651	3.3%
PROPERTY INDEX²	1331	1293	-2.9%	529	539	1.9%	1860	1832	-1.5%
INDEX SUBTOTAL	2707	2661	-1.7%	752	822	9.3%	3459	3483	0.7%
PART 2 SUBTOTAL³	10508	11736	11.7%	1574	1781	13.2%	12082	13517	11.9%
TOTAL	13215	14397	8.9%	2326	2603	11.9%	15541	17000	9.4%

¹Violent Index includes murder and non-negligent manslaughter, rape, robbery, and aggravated assault.

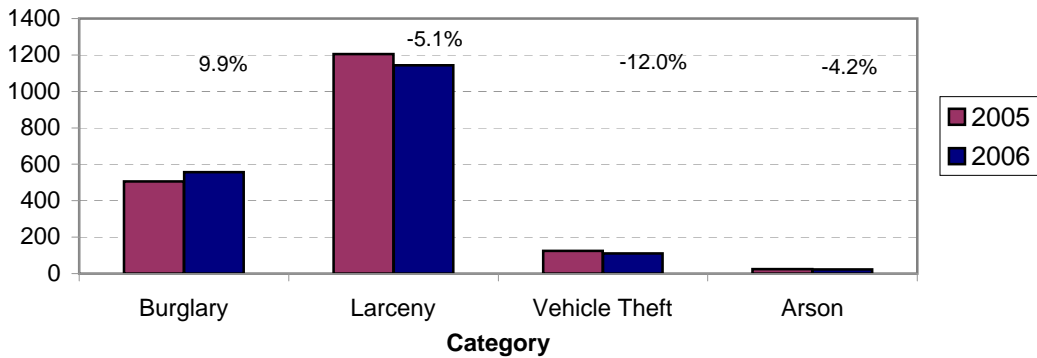
²Property Index includes burglary, larceny, vehicle theft, and arson.

³Part 2 crimes include crime categories not counted in the Index totals.

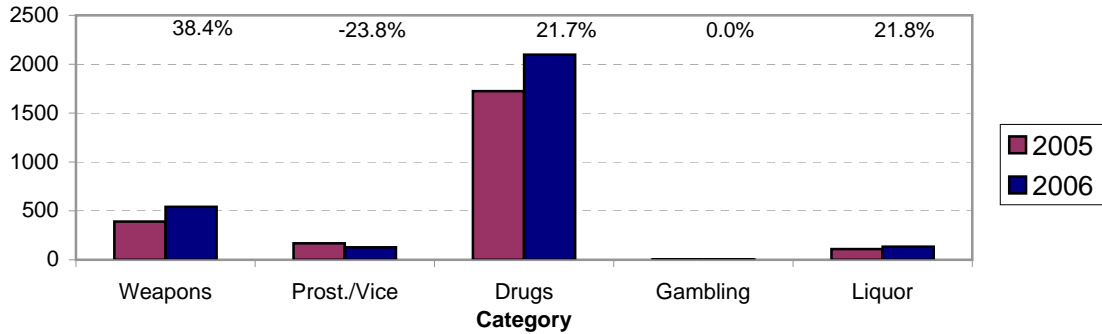
**Violent Index Arrests Year-to-Date
Charlotte-Mecklenburg Police Department: 2005-2006
(Through July)**



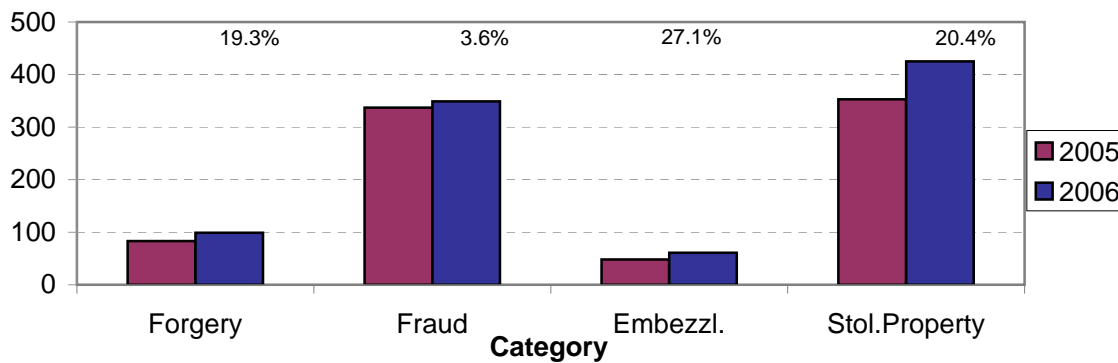
**Property Index Arrests Year-to-Date
Charlotte-Mecklenburg Police Department: 2004-2005
(Through July)**



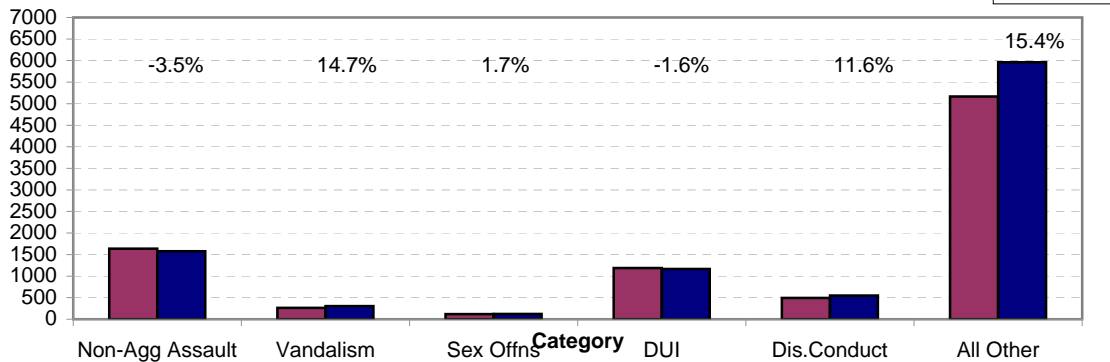
**Arrests for Vice/CCW/Drugs/Etc. Year-to-Date
Charlotte-Mecklenburg Police Department: 2005- 2006
(Through July)**



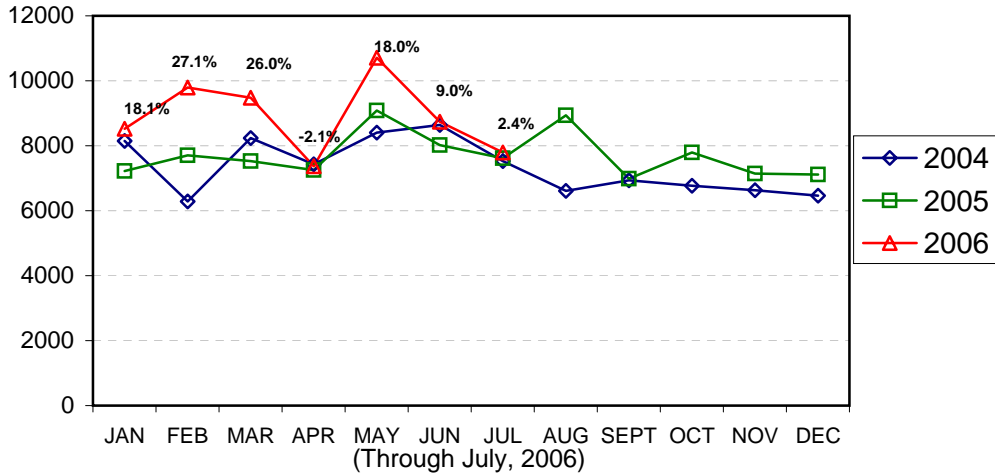
**Arrests for Property/White Collar Crime Year-to-Date
Charlotte-Mecklenburg Police Department: 2005- 2006
(Through July)**



**Arrests for Other Categories Year-to-Date
Charlotte-Mecklenburg Police Department: 2005 - 2006
(Through July)**

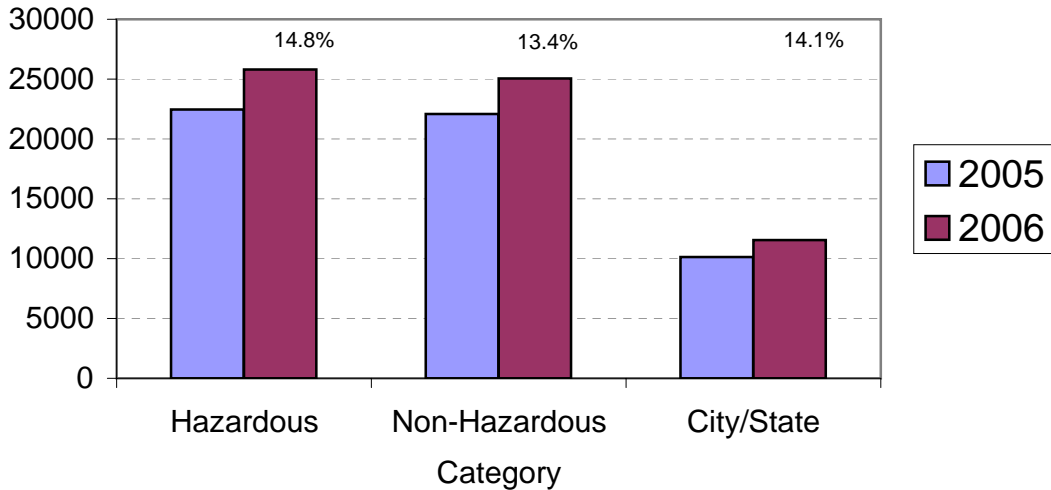


Total Citation Enforcement by Month Charlotte-Mecklenburg Police Dept.: 2004-2006

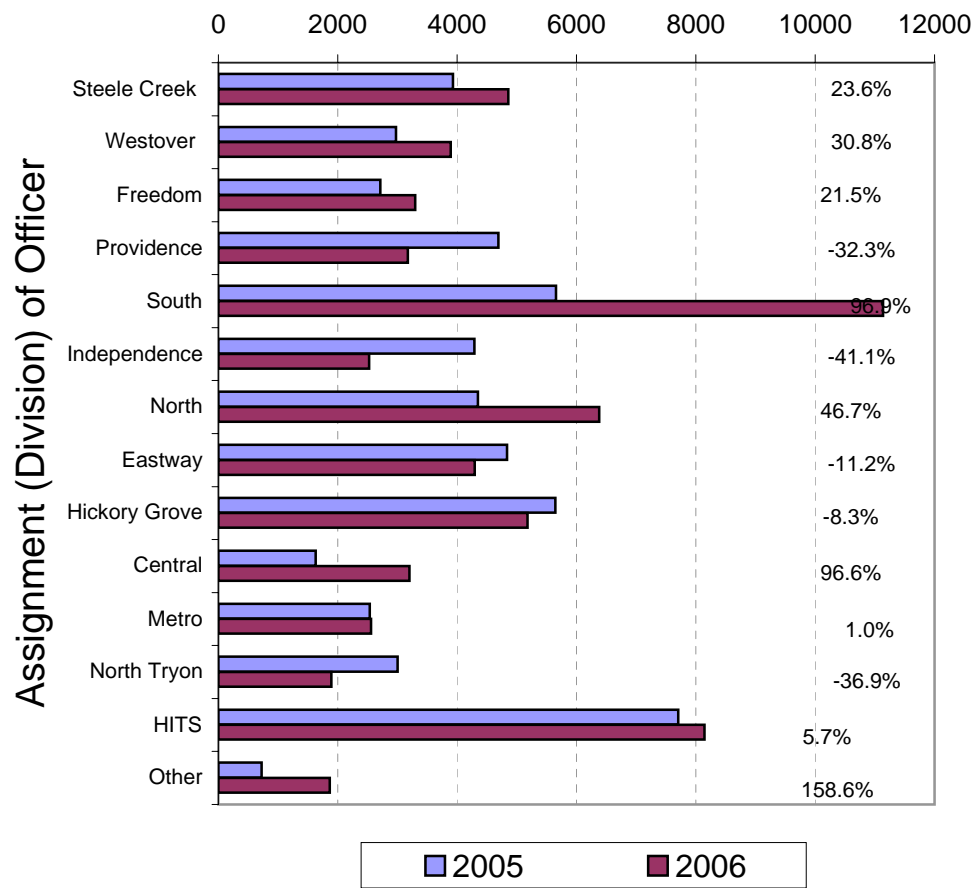


(Includes Hazardous, Non-Hazardous, and City/State Citations; percentages are current month compared to same month in previous year. Percentages are the change from current month to same month in past year. Monthly totals may be affected by data entry delays.)

CMPD Citation Enforcement by Category Year-to-Date, 2005 - 2006 (Through July, 2006)



**Citations Issued Year-to-Date by CMPD Divisions
2005 - 2006
(Through July, 2006)**

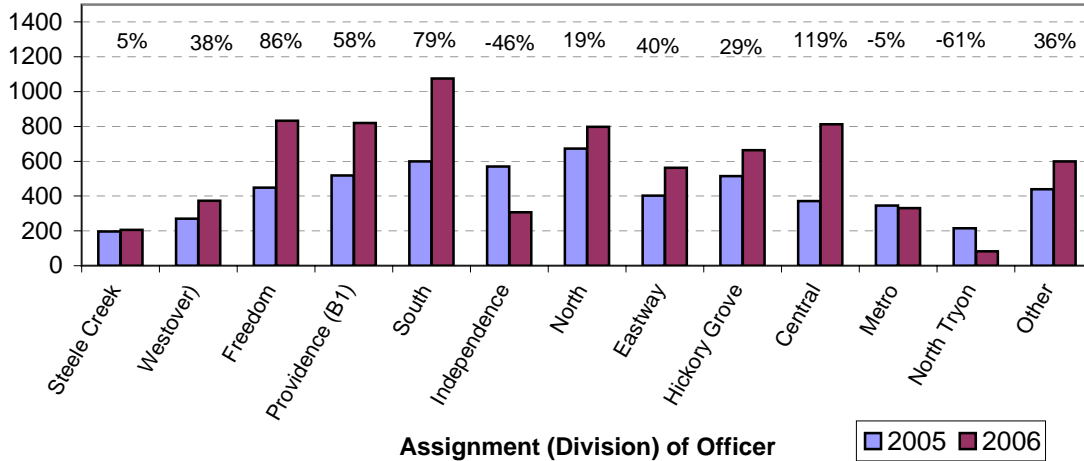


Citations Issued by the Charlotte Mecklenburg Police Officers Year-to-Date (Through July, 2006)			
	2005	2006	% Change
Hazardous	22,472	25,809	14.8%
Non-Hazardous	22,085	25,051	13.4%
Other City/State Statute/Ordinance	10,125	11,551	14.1%
Total	54,682	62,411	14.1%

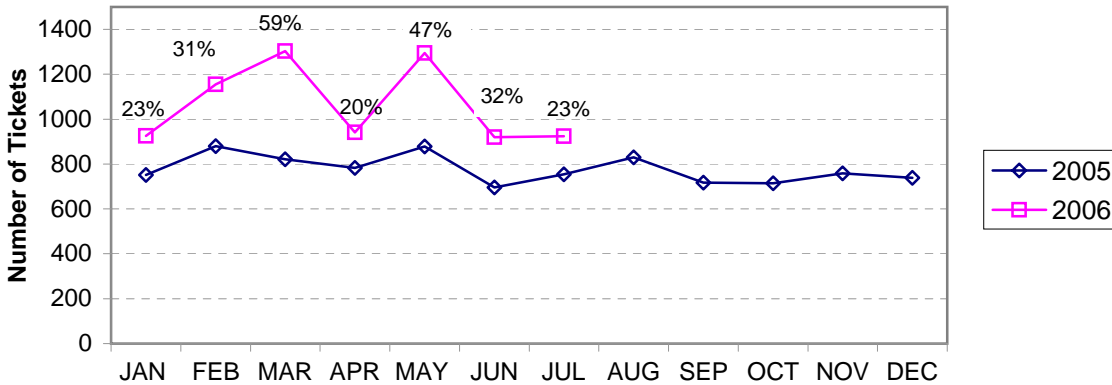
"Safe Speed" Program: 2005-2006 (Through July, 2006)		
	2005	2006
Total Citations	21153	14637

(Citations issued through the "Safe Speed" program are **not** included in the summary charts/graphs; 2006 data only includes Jan- May 26.)

**Warning Ticket Violations Issued by Division
Charlotte-Mecklenburg Police Department, 2005- 2006
Through July, 2006**



**Total Warning Ticket Violations Issued by Month
Charlotte-Mecklenburg Police Department: 2005 - 2006**



**Warning Tickets Issued Year-to-Date
Charlotte-Mecklenburg Police Department
Through July, 2006**

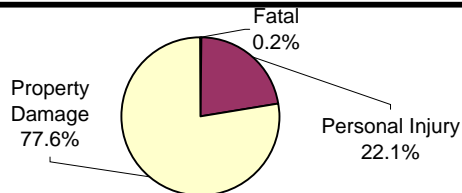
	2005	2006	% Change
Total Warning Tickets	5565	7462	34.1%

**Traffic Collision Reports
Charlotte-Mecklenburg Police Department
Year-to-Date: 2005-2006
(Through July)**

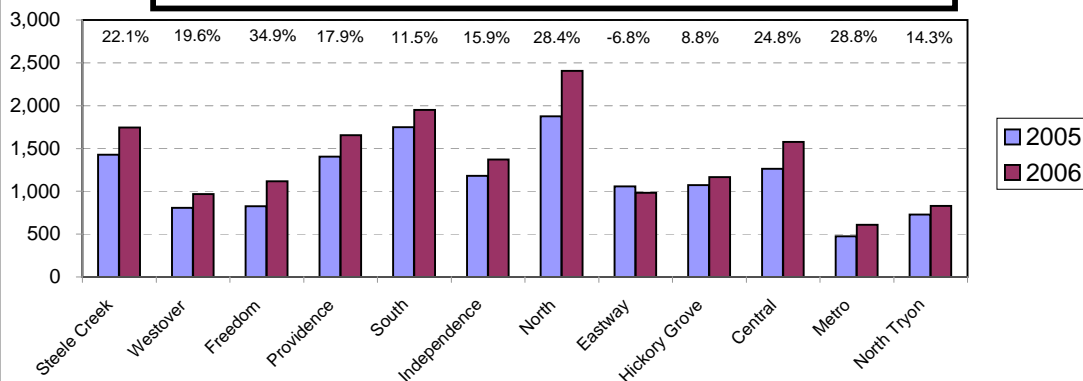
<u>Type</u>	<u>2005</u>	<u>2006</u>	<u>% Change</u>
Fatal Collisions	26	39	50.0%
Vehicle Occupants Killed	23	32	39.1%
Pedestrians Killed	4	9	125.0%
Personal Injury Collisions	3346	3655	9.2%
Property Damage Collisions	10547	12778	21.2%
Total Collisions	13919	16472	18.3%

* The number of fatal collisions and the number of persons killed (fatalities) in those incidents is taken from the HITS file. Their records are updated for deaths that occur after the initial report is filed. Figures for 2005 may be adjusted after publication of 2005 Annual Report.

**Traffic Collisions Reported by Type
Charlotte-Mecklenburg Police Department:
2006 Year-to-Date
(Through July)**



**Traffic Collisions Reported by Charlotte-Mecklenburg Police Dept.
Year-to-Date By Location (Division) : 2005 -2006
(Through July)**



**CITIZEN-INITIATED CALLS FOR SERVICE¹ BY TYPE
CHARLOTTE-MECKLENBURG POLICE DEPARTMENT**

<u>Type of Call²</u>	<u>2005 Year-to-Date Through July</u>	<u>2006 Year-to-Date Through July</u>	<u>Year-to-Date % Change</u>
ABC RELATED	1342	1317	-1.9%
ACCIDENT	20592	20436	-0.8%
ALARM	20153	20913	3.8%
ANIMAL CONTROL ³	141	177	25.5%
ASSAULT	2620	2762	5.4%
ASSAULT WITH DEADLY WEAPON	999	1088	8.9%
ASSIST OTHER AGENCY	4776	5044	5.6%
BOMB THREAT	56	59	5.4%
BREAK/ENTER	10650	11705	9.9%
CDCP CLINICIAN VISIT ⁴	0	552	NA
COMMUNICATING THREATS	2059	2005	-2.6%
COUNTY SECURITY ³	5	4	-20.0%
CRIMINAL INTELLIGENCE	13	11	-15.4%
CRITICAL INCIDENT ⁴	0	12	NA
DAMAGE TO PROPERTY	4771	4614	-3.3%
DEATH	160	158	-1.3%
DISTURBANCE	15404	16746	8.7%
DOMESTIC INCIDENT	21560	21054	-2.3%
DRUG RELATED	2232	2452	9.9%
EXTORTION/BLACKMAIL ⁴	0	2	NA
FIGHT	1957	2043	4.4%
FIRE	4	6	50.0%
FIRE CASE	55	49	-10.9%
FRAUD/FORGERY	1831	2217	21.1%
GAMBLING	12	8	-33.3%
HARASSMENT	1180	989	-16.2%
HIT AND RUN	4331	4472	3.3%
JUVENILE RELATED	1358	1348	-0.7%
KIDNAPPING	116	139	19.8%
LAKE ENFORCEMENT	43	14	-67.4%
LARCENY	17153	16989	-1.0%
LOITERING	2795	3285	17.5%
MAJOR INCIDENT	12	4	-66.7%
MISSING PERSON	4194	4362	4.0%
NOISE COMPLAINT	8560	9067	5.9%
OFFENSE AGAINST FAMILY	3	20	566.7%
OFFICER CALLED IN	430	354	-17.7%
OVERDOSE	253	49	-80.6%
PORNOGRAPHY	4	9	125.0%
PROPERTY	3685	4223	14.6%
PROSTITUTION	747	776	3.9%
PUBLIC SERVICE	13029	10785	-17.2%
QUALITY OF LIFE	788	832	5.6%
ROBBERY	2007	1997	-0.5%
SEX CRIME	660	747	13.2%
SPECIAL SERVICE REQUEST	6	3	-50.0%
SUICIDE	676	766	13.3%
SUSPICIOUS PERSON	11386	12142	6.6%
TRAFFIC RELATED	6432	6776	5.3%
TRESPASS	2585	2460	-4.8%
VEHICLE RELATED	19887	21109	6.1%
VIOLENT CRIMES TASK FORCE	1	2	100.0%
WARRANT RELATED	2176	1929	-11.4%
WEAPON RELATED	4512	5268	16.8%
ZONE CHECK-ADVISED EVENT ⁴	0	7	NA
911 HANG UP / CALLBACK	15759	10476	-33.5%
TOTAL	236160	236833	0.3%

¹These totals exclude duplicate and cancelled calls for service; they include calls handled by the Crime Reporting Unit as well as by division field officers, detectives and related CMPD staff.

²The type of call is determined from the 911 call, unless updated by an officer assigned to respond.

³In this summary, calls to Animal Control, Mecklenburg County Security, or Davidson Police are not included unless they also involve the dispatching of C-MPD field officers or detectives.

⁴This call type was not in use during the previous year and/or all of the current year.

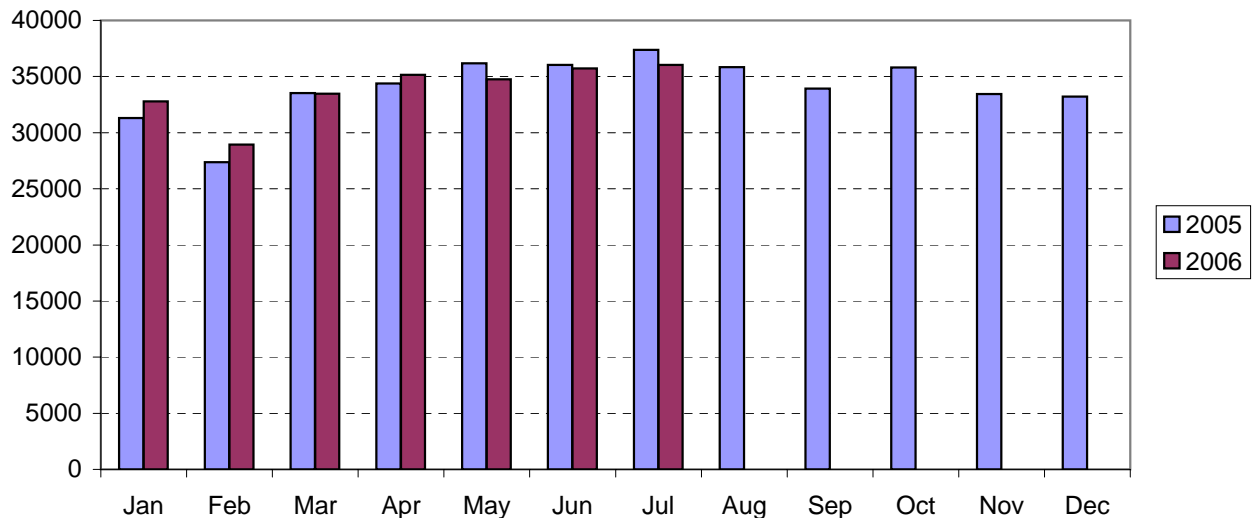
CITIZEN-INITIATED CALLS FOR SERVICE BY ORIGINATING CMPD DIVISION^{1,2}
 (Based on District of Call Origination, Not on Assigned District of Responding Units)

<u>District</u>	<u>2005 Year-to-Date Through July</u>	<u>2006 Year-to-Date Through July</u>	<u>Year-to-Date % Change</u>
Central-01 (D1)	14978	14755	-1.5%
Metro-02 (D2)	13206	13493	2.2%
Eastway-06 (C2)	17612	16609	-5.7%
North Tryon-07 (D3)	14340	14606	1.9%
North-11 (C1)	28513	31382	10.1%
Hickory Grove-12 (C3)	21692	22157	2.1%
Providence-16 (B1)	16415	16030	-2.3%
Independence-17 (B3)	20734	20556	-0.9%
Steele Creek-21 (A1)	20376	20980	3.0%
South-22 (B2)	21660	21221	-2.0%
Westover-26 (A2)	16164	17139	6.0%
Freedom-27 (A3)	23261	24753	6.4%

¹These totals exclude duplicate and cancelled calls for service; they include calls handled by the Crime Reporting Unit as well as by division field officers, detectives and other CMPD staff.

²Calls where the location could not be assigned to one of the divisions are not included in this chart.

Citizen-Initiated Calls for Service¹ by Month
Charlotte-Mecklenburg Police Department: 2005-2006



¹These totals exclude duplicate and cancelled calls for service; they include calls handled by the Crime Reporting Unit as well as by division field officers, detectives and other CMPD staff.

Uniform Crime Reporting Procedures

The Charlotte-Mecklenburg Police Department reports offense and arrest statistics in accordance with standard Uniform Crime Reporting (UCR) guidelines. UCR policy states that any adjustments to previous months can be made on the current month's report:

...In tabulating crime counts, an agency may find that offense totals for past months require adjustments due to developments in the investigation or other handling of the matter. It may be necessary to adjust totals reported to UCR for the past month or prior months. Needed adjustments can be made on the current month's report and do not affect the reliability of the figures in that such adjustments tend to equalize each other from month to month over a period of time.

- *Uniform Crime Reporting Handbook*, FBI, 1984, p. 42-43

We are required to report crime monthly to the UCR program, and we do therefore make an effort to process monthly changes in a timely manner. However, occasionally due to the review and processing required for reclassifying, unfounding or clearing cases, the current month's totals may reflect the processing of a backlog of these changes from previous months.

Users of the data are cautioned that conclusions about substantial changes in crime trends or in clearance rates based on only a single month's data or trend may reflect some of these adjustments. For this reason, in addition to the monthly and year-to-date trends on Page 1, the monthly report routinely includes a comparison for the previous 12 months (p. 4), as well as graphs that provide seasonal/monthly comparisons over a five-year period (p. 5-8).

UCR Definitions and Terms:

Index Crime: the eight offenses that the national UCR program tracks on a yearly basis to gauge trends in the extent of crime, despite differences among state and local criminal statutes. These offenses were selected on the basis of several factors: seriousness, frequency of occurrence, pervasiveness in all geographic areas, and/or likelihood of being reported to law enforcement.

Violent Index: includes the offenses of murder/non-negligent manslaughter, rape, robbery, and aggravated assault

Property Index: includes the offenses of burglary, larceny, vehicle theft and arson

Murder/non-negligent manslaughter: the willful killing of one human being by another

Rape: the carnal knowledge of a female forcibly and against her will [Note: This offense does not include other sex offenses or statutory (non-forcible) rape.]

Robbery: the taking or attempt to take anything of value from the care, custody, or control of a person or persons by force, threat of force or violence, or by putting the victim in fear.

Aggravated assault: an unlawful attack by one person on another for the purpose of inflicting severe or aggravated bodily injury; includes 1) all assaults in which a weapon of any type is used or is threatened to be used and/or 2) all assaults where serious injury occurs.

Burglary: the unlawful entry or attempted entry of a structure to commit a felony or a theft

Larceny-Theft: the unlawful taking (or attempt), carrying, leading, or riding away of property from the possession or constructive possession of another [Note: Larceny/theft of a motor vehicle is classed separately.]

Vehicle Theft: the theft or attempted theft of a motor vehicle (a self-propelled vehicle that runs on land and not on rails, excluding farm and construction equipment)

Arson: the willful or malicious burning or attempt to burn, with or without intent to defraud, a structure, motor vehicle, personal property of another, etc.

Hierarchy rule: For cases involving multiple-offenses, the incident is classified and counted based on the highest offense on a hierarchy of crimes established by UCR. For example, for an incident involving a rape and a burglary, the incident would be counted in the rape category because rape is higher than burglary on the hierarchy.

Clearance: A case is considered cleared when either at least one arrest is made for the offense or when an offender's identity is established by investigation but the offender will not be arrested for reasons outside law enforcement control (offender dies, victim refuses to prosecute, district attorney declines prosecution, extradition is refused, etc.).

Unfounding: A case is "unfounded" and subtracted from the crime counts when investigation establishes that the incident did not actually occur or that the actions within the incident are not criminal based on current law.

For additional information, please consult the *UCR Handbook* on the FBI website at <http://www.fbi.gov/ucr/ucr.htm>.

This report was compiled by the Research, Planning, and Analysis Division.

We make an effort to present the most accurate information available at the time this report is published. Please notify the Research, Planning, and Analysis office if you have any questions about the data in this report or about an error that was missed in proofing the report.