



---

**CHARLOTTE-MECKLENBURG POLICE DEPARTMENT  
MONTHLY SUMMARY REPORT  
JUNE, 2006**

---

---

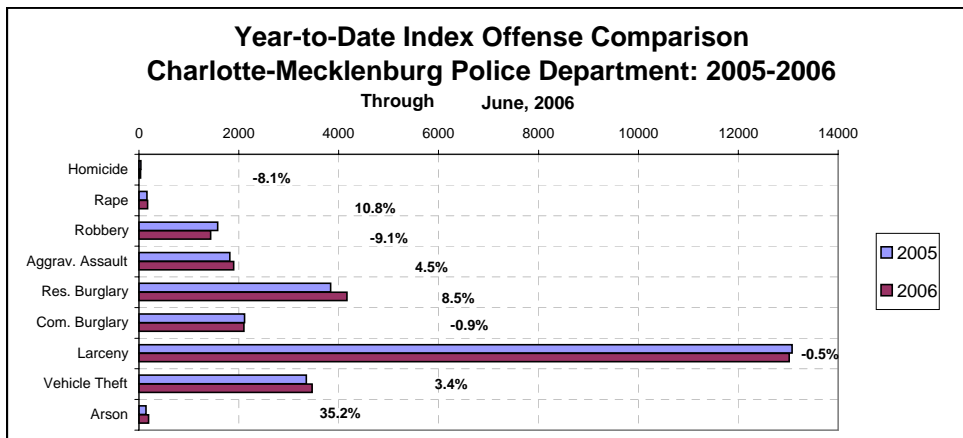
**Darrel Stephens  
Chief of Police**

---

**INDEX OFFENSES REPORTED TO CHARLOTTE-MECKLENBURG POLICE DEPARTMENT**

June, 2006 INDEX OFFENSES	# THIS MONTH	% OF ALL INDEX	# LAST MONTH	MONTHLY % CHANGE	SAME MONTH LAST YEAR	MONTHLY % CHANGE	THIS YEAR TO DATE	LAST YEAR TO DATE	ANNUAL % CHANGE
HOMICIDE (MURDER & NON- NEGLIGENT MANSLAUGHTER)	6	0.1%	8	-25.0%	10	-40.0%	34	37	-8.1%
RAPE TOTAL	34	0.7%	26	30.8%	30	13.3%	174	157	10.8%
ACTUAL	30	0.6%	24	25.0%	28	7.1%	157	147	6.8%
ATTEMPT	4	0.1%	2	100.0%	2	100.0%	17	10	70.0%
ROBBERY TOTAL	302	5.8%	260	16.2%	288	4.9%	1436	1579	-9.1%
ARMED	228	4.4%	188	21.3%	240	-5.0%	1120	1275	-12.2%
STRONG-ARM	74	1.4%	72	2.8%	48	54.2%	316	304	3.9%
AGGRAVATED ASSAULT TOTAL	372	7.2%	306	21.6%	381	-2.4%	1898	1817	4.5%
BURGLARY TOTAL	1112	21.5%	1100	1.1%	1041	6.8%	6282	5953	5.5%
RESIDENTIAL	723	14.0%	728	-0.7%	652	10.9%	4163	3836	8.5%
COMMERCIAL *****	389	7.5%	372	4.6%	389	0.0%	2099	2117	-0.9%
FORCE	879	17.0%	889	-1.1%	817	7.6%	5091	4850	5.0%
NO FORCE	157	3.0%	125	25.6%	165	-4.8%	728	725	0.4%
ATTEMPT	76	1.5%	86	-11.6%	59	28.8%	463	378	22.5%
LARCENY TOTAL	2615	50.5%	2331	12.2%	2326	12.4%	13020	13080	-0.5%
\$200 AND OVER	1365	26.4%	1184	15.3%	1112	22.8%	6644	6420	3.5%
\$50 TO \$200	514	9.9%	454	13.2%	493	4.3%	2492	2576	-3.3%
UNDER \$50 *****	736	14.2%	693	6.2%	721	2.1%	3884	4084	-4.9%
FROM AUTO	1371	26.5%	1175	16.7%	1137	20.6%	6690	6542	2.3%
BICYCLE	28	0.5%	22	27.3%	31	-9.7%	91	93	-2.2%
SHOPLIFTING	257	5.0%	243	5.8%	236	8.9%	1367	1276	7.1%
OTHERS	959	18.5%	891	7.6%	922	4.0%	4872	5169	-5.7%
VEHICLE THEFT TOTAL	708	13.7%	620	14.2%	553	28.0%	3464	3350	3.4%
ARSON TOTAL	26	0.5%	28	-7.1%	24	8.3%	192	142	35.2%
TOTALS	5175	100.0%	4679	10.6%	4653	11.2%	26500	26115	1.5%
VIOLENT PROPERTY	714	13.8%	600	19.0%	709	0.7%	3542	3590	-1.3%
	4461	86.2%	4079	9.4%	3944	13.1%	22958	22525	1.9%

NOTE: These totals include offenses reported to the Charlotte-Mecklenburg Police Department in accordance with the Uniform Crime Reporting Program. Totals for homicide do not include cases investigated by the police but classed by UCR guidelines as negligent manslaughter or as "justifiable homicide."

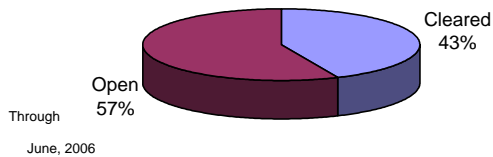


**INDEX CLEARANCES REPORTED BY THE CHARLOTTE-MECKLENBURG POLICE DEPARTMENT**

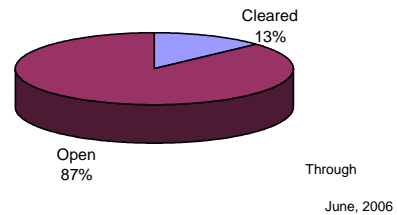
June, 2006 INDEX CLEARANCES	THIS MONTH:		LAST MONTH:		SAME MO. LAST YR:		THIS YEAR TO DATE:		LAST YEAR TO DATE:	
	NO.	%	NO.	%	NO.	%	NO.	%	NO.	%
MURDER & NON-NEGLIGENT MANSLAUGHTER <sup>1</sup>	9	150.0%	3	37.5%	5	50.0%	25	73.5%	16	43.2%
RAPE TOTAL	20	58.8%	26	100.0%	27	90.0%	126	72.4%	130	82.8%
ACTUAL	18	60.0%	25	104.2%	25	89.3%	115	73.2%	125	85.0%
ATTEMPT	2	50.0%	1	50.0%	2	100.0%	11	64.7%	15	150.0%
ROBBERY TOTAL	67	22.2%	70	26.9%	51	17.7%	434	30.2%	363	23.0%
ARMED	53	23.2%	54	28.7%	37	15.4%	340	30.4%	276	21.6%
STRONG-ARM	14	18.9%	16	22.2%	14	29.2%	94	29.7%	87	28.6%
AGGRAVATED ASSAULT TOTAL	163	43.8%	177	57.8%	171	44.9%	948	49.9%	918	50.5%
BURGLARY TOTAL	96	8.6%	99	9.0%	120	11.5%	538	8.6%	724	12.2%
RESIDENTIAL	63	8.7%	77	10.6%	95	14.6%	409	9.8%	579	15.1%
COMMERCIAL	33	8.5%	22	5.9%	25	6.4%	129	6.1%	145	6.8%
LARCENY TOTAL	330	12.6%	356	15.3%	317	13.6%	2022	15.5%	1945	14.9%
FROM AUTO	25	1.8%	37	3.1%	26	2.3%	223	3.3%	271	4.1%
BICYCLE	5	17.9%	0	0.0%	4	12.9%	8	8.8%	13	14.0%
SHOPLIFTING	160	62.3%	153	63.0%	145	61.4%	891	65.2%	861	67.5%
OTHERS	140	14.6%	166	18.6%	142	15.4%	900	18.5%	800	15.5%
VEHICLE THEFT TOTAL	78	11.0%	63	10.2%	72	13.0%	413	11.9%	550	16.4%
ARSON TOTAL	8	30.8%	8	28.6%	13	54.2%	52	27.1%	34	23.9%
TOTALS	771	14.9%	802	17.1%	776	16.7%	4558	17.2%	4680	17.9%
VIOLENT PROPERTY	259 512	36.3% 11.5%	276 526	46.0% 12.9%	254 522	35.8% 13.2%	1533 3025	43.3% 13.2%	1427 3253	39.7% 14.4%

<sup>1</sup>NOTE : Clearances are reported in accordance with Uniform Crime Report guidelines. Since clearances are not counted for UCR until they are entered in the Records Management system, any delays in entry of the documentation may result in some clearances being reported later in succeeding months. Clearances for homicides from years prior to the automated KBCOPS Records and Case Management modules were counted in the December clearances.

**Year-to-Date Violent Index Clearance Rate  
Charlotte-Mecklenburg Police Department: 2006**

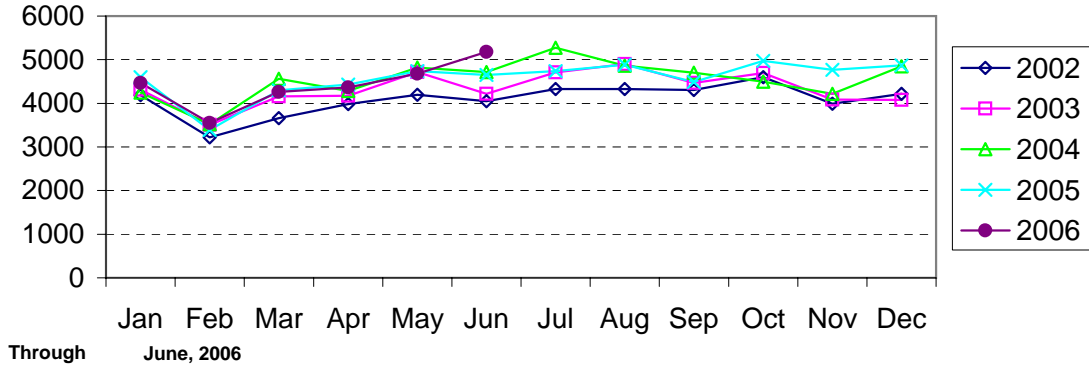


**Year-to-Date Property Index Clearance Rate  
Charlotte-Mecklenburg Police Department: 2006**

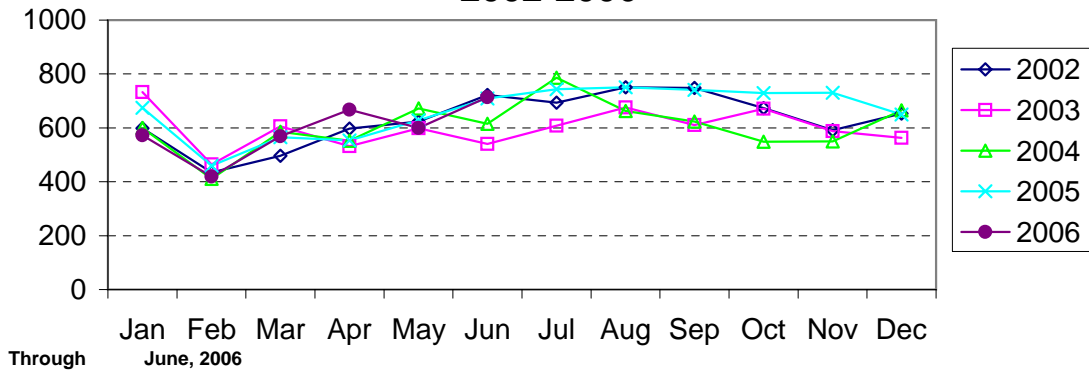


Clearance rates for crime reporting are calculated by dividing the number of crimes cleared during a designated time span by the number of crimes reported in the same period and converting the result to a percentage (multiplying by 100). Since cases from previous reporting periods can be cleared during the designated time span, the rate may be higher than 100%.

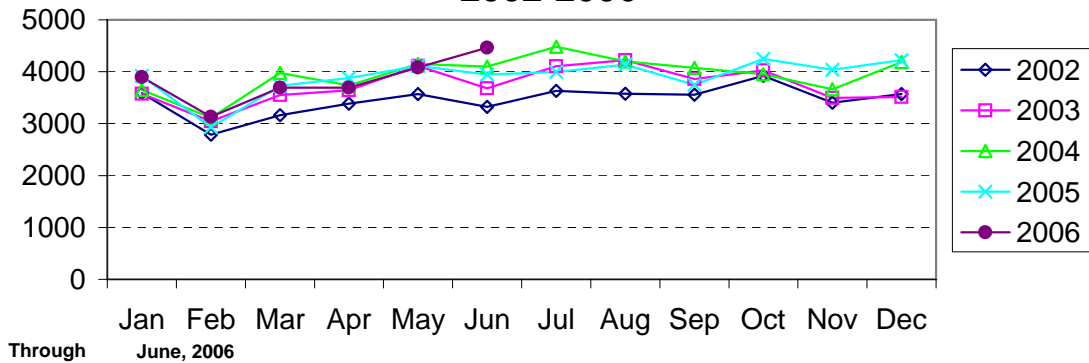
### Index Offenses Reported by Month Charlotte-Mecklenburg Police Department: 2002-2006



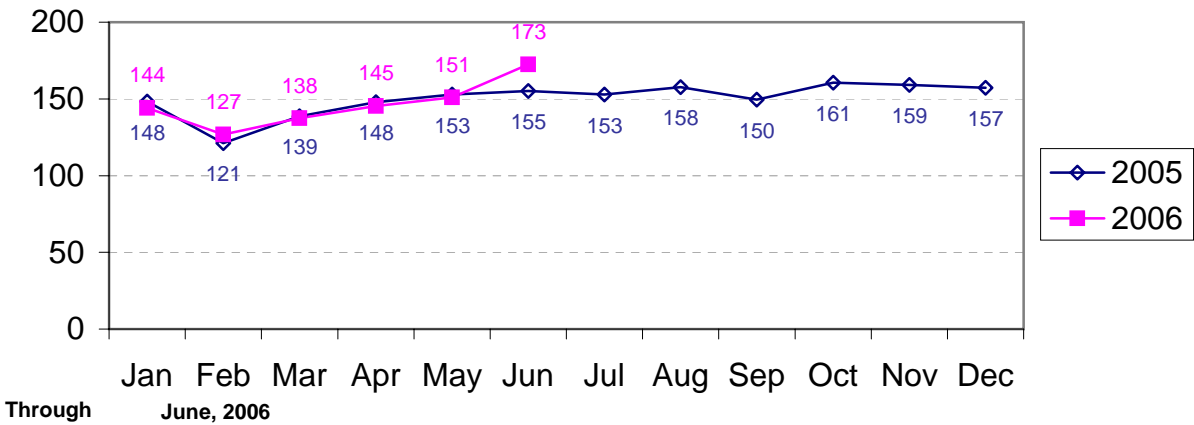
### Violent Index Offenses Reported by Month Charlotte-Mecklenburg Police Department: 2002-2006



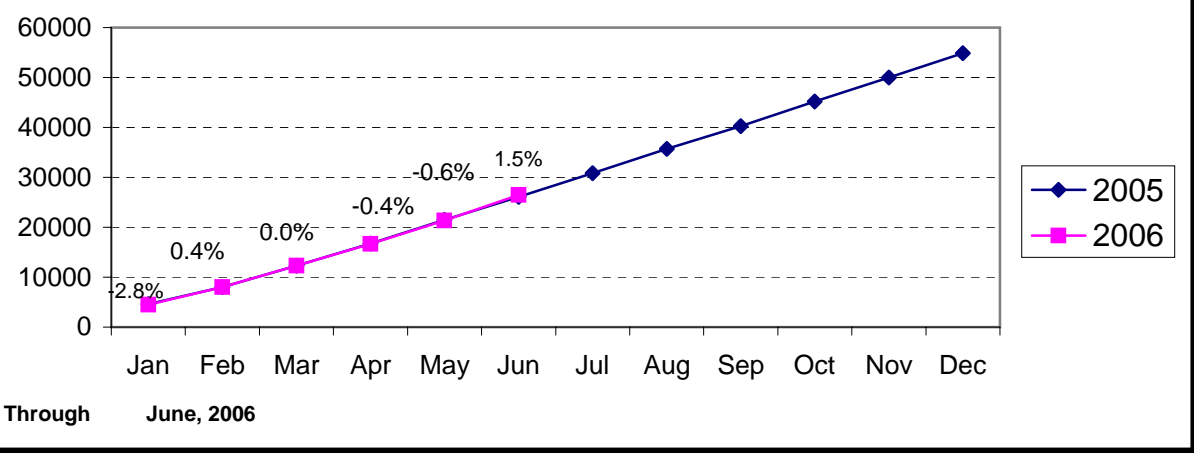
### Property Index Offenses Reported by Month Charlotte-Mecklenburg Police Department: 2002-2006



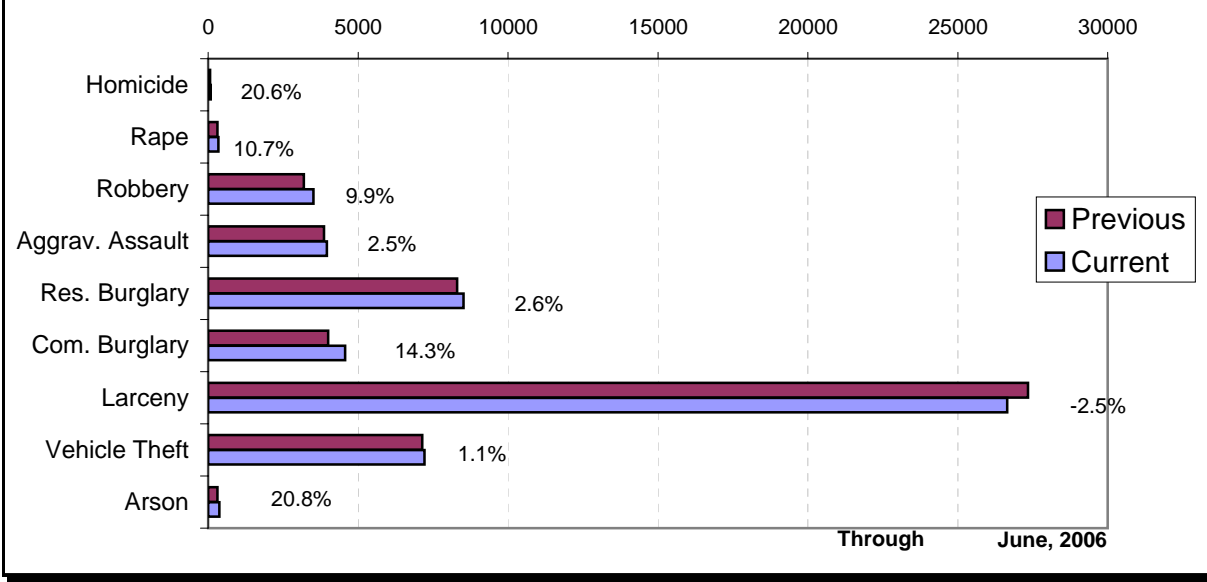
### Index Offense Per Day Average by Month Charlotte-Mecklenburg Police Department: 2005-2006



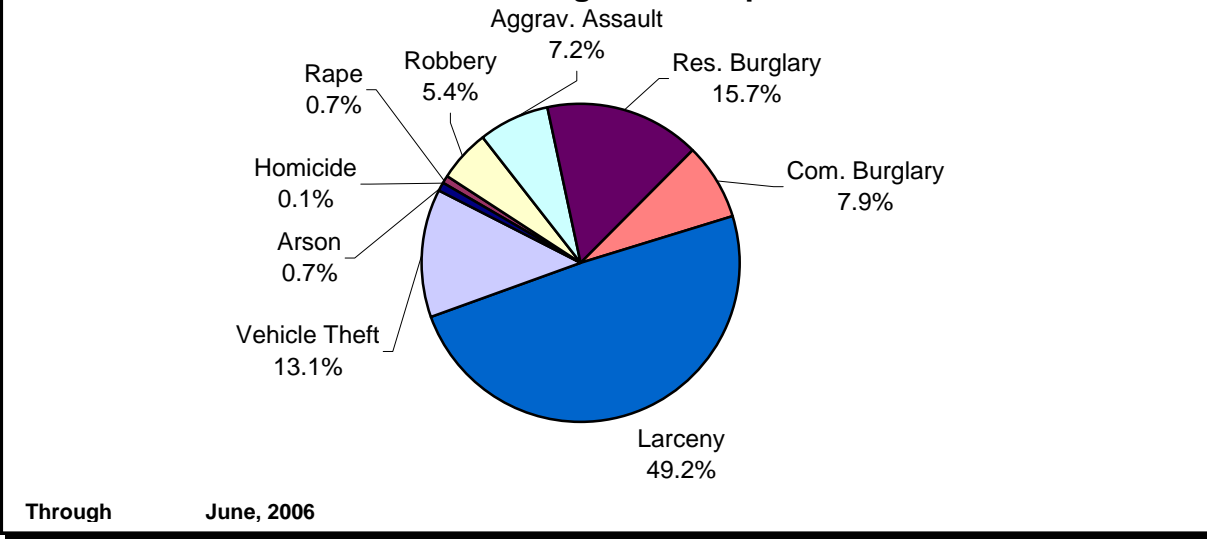
### Index Offenses Year-to-Date Cumulative Totals Charlotte-Mecklenburg Police Department: 2005-2006



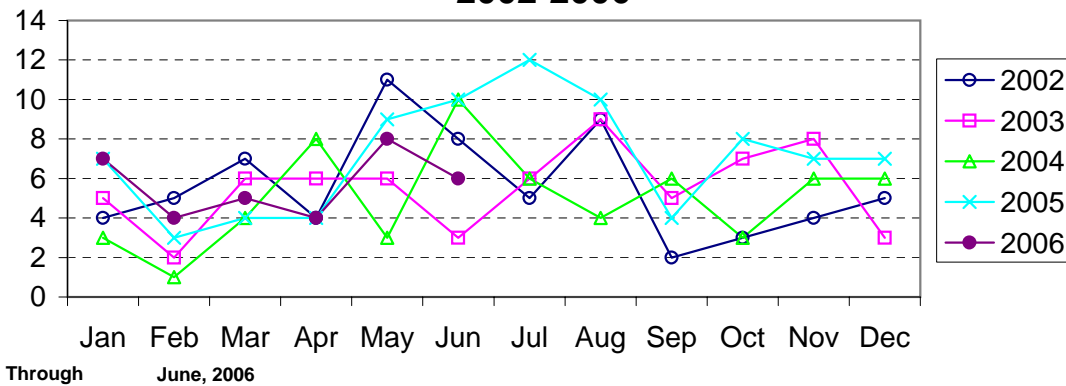
### Index Offenses in Current & Previous 12 Month Periods Charlotte-Mecklenburg Police Department



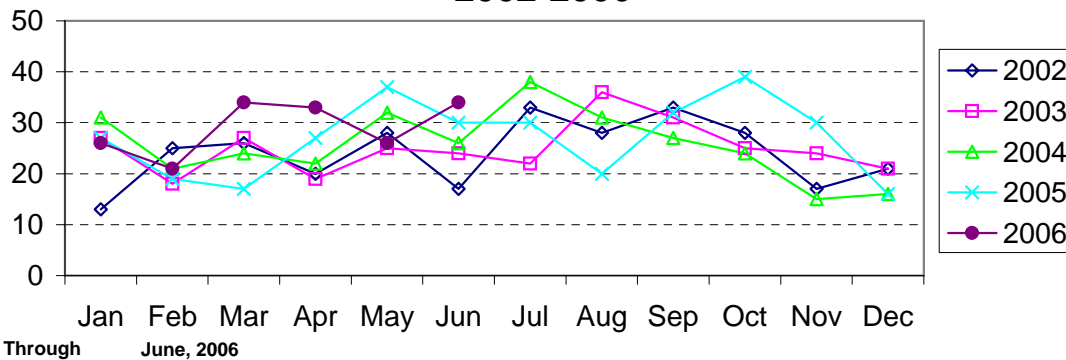
### Year-to-Date Index Offenses by Type Charlotte-Mecklenburg Police Department: 2006



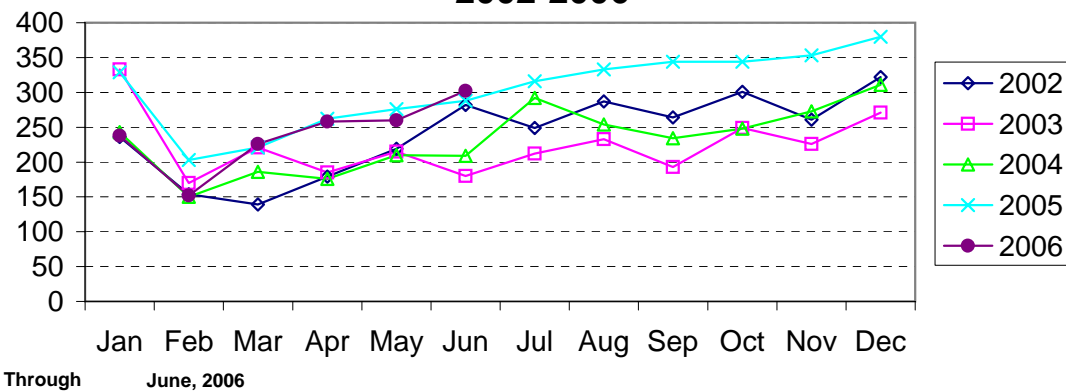
### Homicide Reported by Month Charlotte-Mecklenburg Police Department: 2002-2006



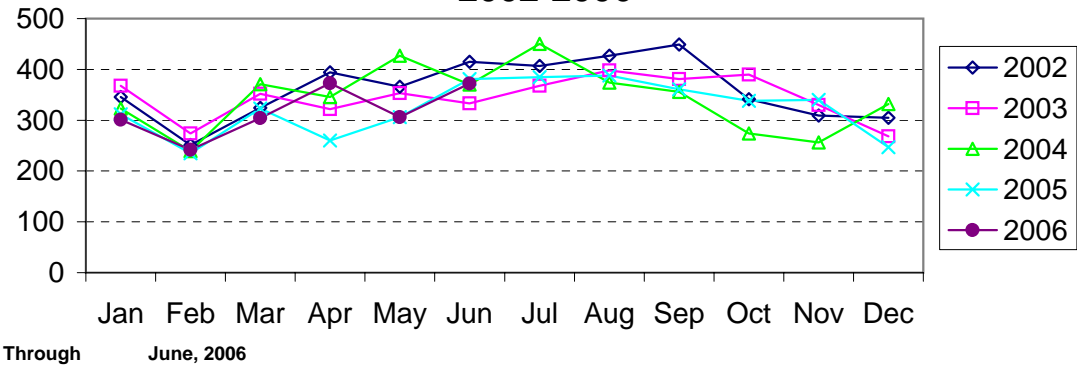
### Rape Reported by Month Charlotte-Mecklenburg Police Department: 2002-2006



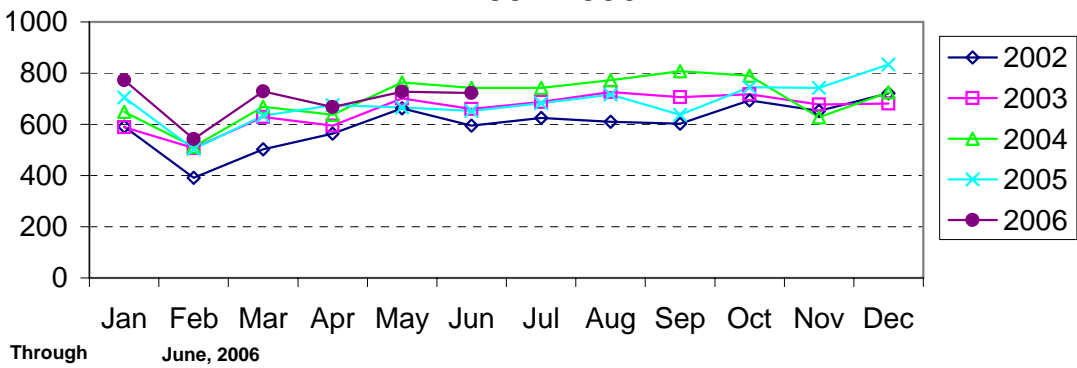
### Robbery Reported by Month Charlotte-Mecklenburg Police Department: 2002-2006



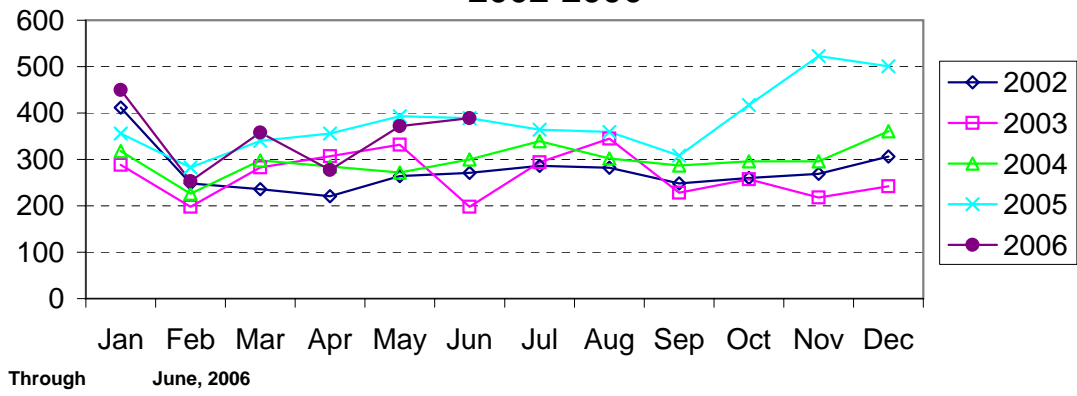
**Aggravated Assault Reported by Month  
Charlotte-Mecklenburg Police Department:  
2002-2006**



**Residential Burglary Reported by Month  
Charlotte-Mecklenburg Police Department:  
2002-2006**

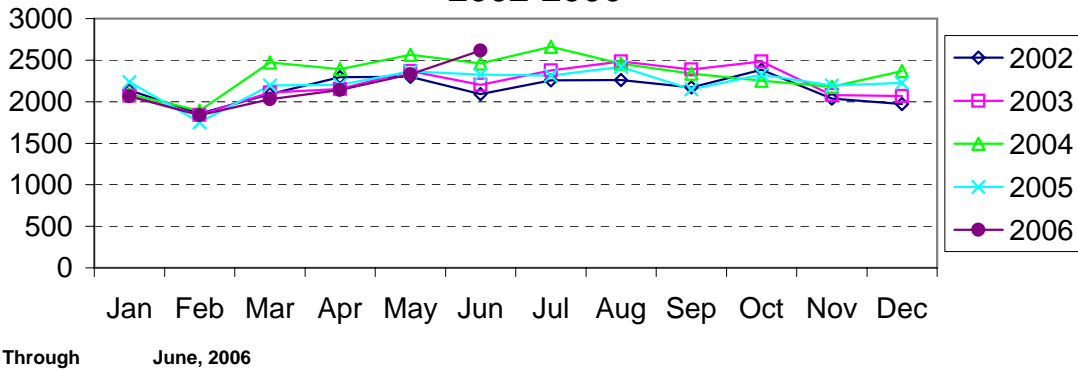


**Commercial Burglary Reported by Month  
Charlotte-Mecklenburg Police Department:  
2002-2006**

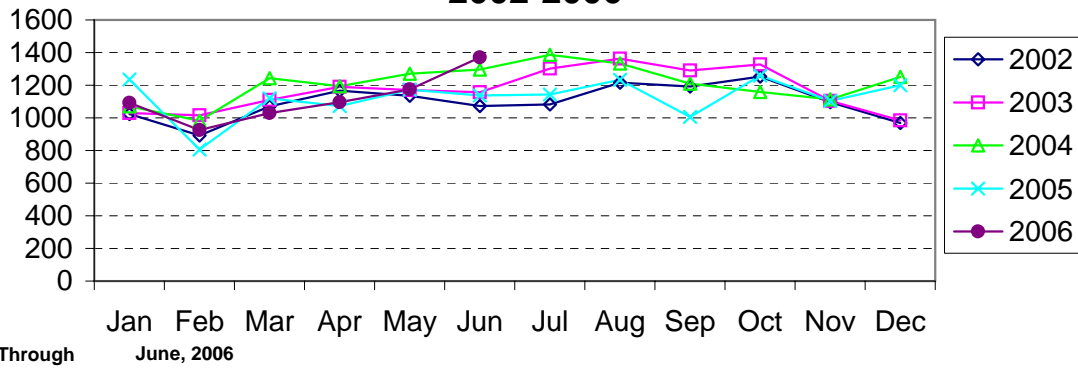




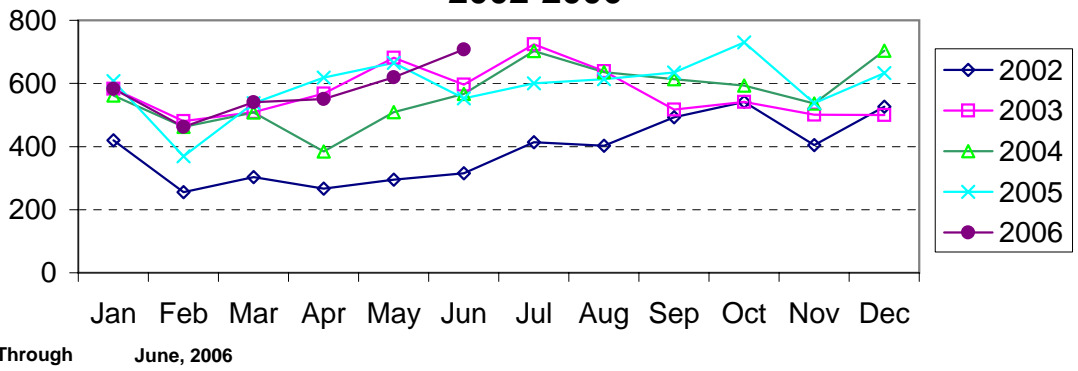
### Larceny Reported by Month Charlotte-Mecklenburg Police Department: 2002-2006



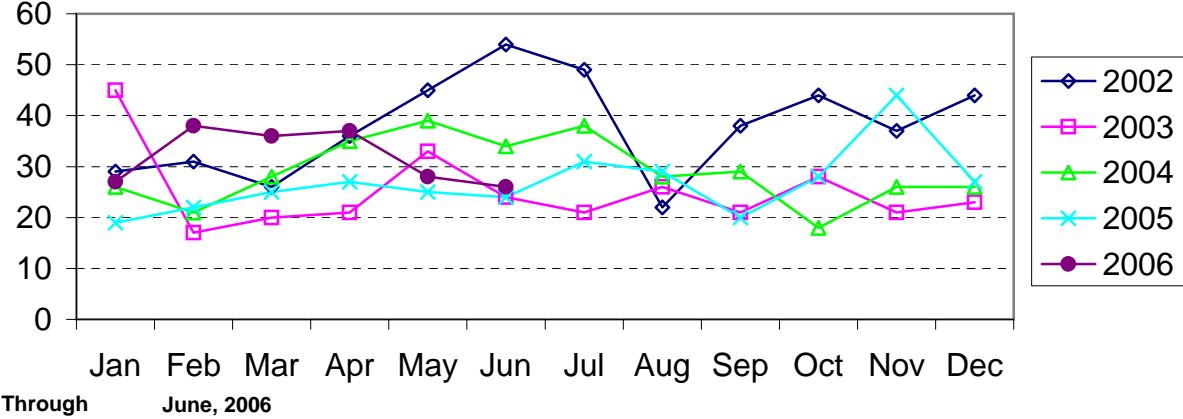
### Larceny from Vehicle Reported by Month Charlotte-Mecklenburg Police Department: 2002-2006



### Vehicle Theft Reported by Month Charlotte-Mecklenburg Police Department: 2002-2006



### Arson Reported by Month Charlotte-Mecklenburg Police Department: 2002-2006



Index Offenses Reported by Division and Service Area of Occurrence									
West Service Area: June 2005-2006									
INDEX_CATEGORIES	Westover (A2)			Freedom (A3)			West Service Area		
	2005	2006	% Change	2005	2006	% Change	2005	2006	% Change
MURDER & NON-NEGLIGENT MANSLAUGHTER	2	2	0.0%	6	5	-16.7%	8	7	-12.5%
RAPE	14	14	0.0%	13	17	30.8%	27	31	14.8%
ACTUAL	13	13	0.0%	13	17	30.8%	26	30	15.4%
ATTEMPTED	1	1	0.0%	0	0	NA	1	1	0.0%
ROBBERY	130	143	10.0%	223	169	-24.2%	353	312	-11.6%
ARMED	103	110	6.8%	195	133	-31.8%	298	243	-18.5%
STRONG-ARM	27	33	22.2%	28	36	28.6%	55	69	25.5%
AGGRAVATED ASSAULT	209	286	36.8%	236	238	0.8%	445	524	17.8%
BURGLARY	490	498	1.6%	853	822	-3.6%	1343	1320	-1.7%
RESIDENTIAL	260	338	30.0%	528	503	-4.7%	788	841	6.7%
COMMERCIAL	230	160	-30.4%	325	319	-1.8%	555	479	-13.7%
LARCENY	857	820	-4.3%	1195	1371	14.7%	2052	2191	6.8%
FROM AUTO	394	368	-6.6%	523	621	18.7%	917	989	7.9%
BICYCLE	1	6	500.0%	5	6	20.0%	6	12	100.0%
SHOPLIFTING	70	99	41.4%	106	173	63.2%	176	272	54.5%
OTHERS	392	347	-11.5%	561	571	1.8%	953	918	-3.7%
VEHICLE THEFT	254	328	29.1%	327	370	13.1%	581	698	20.1%
ARSON	12	11	-8.3%	15	28	86.7%	27	39	44.4%
TOTALS	1968	2102	6.8%	2868	3020	5.3%	4836	5122	5.9%
VIOLENT	355	445	25.4%	478	429	-10.3%	833	874	4.9%
PROPERTY	1613	1657	2.7%	2390	2591	8.4%	4003	4248	6.1%

Index Offenses Reported by Division and Service Area of Occurrence									
Southeast Service Area: June 2005-2006									
INDEX_CATEGORIES	Providence (B1)			Independence (B3)			Southeast Service Area		
	2005	2006	% Change	2005	2006	% Change	2005	2006	% Change
MURDER & NON-NEGLIGENT MANSLAUGHTER	3	2	-33.3%	4	0	-100.0%	7	2	-71.4%
RAPE	9	12	33.3%	17	18	5.9%	26	30	15.4%
ACTUAL	9	10	11.1%	14	16	14.3%	23	26	13.0%
ATTEMPTED	0	2	NA	3	2	-33.3%	3	4	33.3%
ROBBERY	56	60	7.1%	134	135	0.7%	190	195	2.6%
ARMED	44	38	-13.6%	110	117	6.4%	154	155	0.6%
STRONG-ARM	12	22	83.3%	24	18	-25.0%	36	40	11.1%
AGGRAVATED ASSAULT	55	61	10.9%	136	120	-11.8%	191	181	-5.2%
BURGLARY	417	362	-13.2%	473	541	14.4%	890	903	1.5%
RESIDENTIAL	259	227	-12.4%	371	438	18.1%	630	665	5.6%
COMMERCIAL	158	135	-14.6%	102	103	1.0%	260	238	-8.5%
LARCENY	953	954	0.1%	1154	1024	-11.3%	2107	1978	-6.1%
FROM AUTO	401	470	17.2%	626	502	-19.8%	1027	972	-5.4%
BICYCLE	8	6	-25.0%	7	16	128.6%	15	22	46.7%
SHOPLIFTING	119	141	18.5%	121	112	-7.4%	240	253	5.4%
OTHERS	425	337	-20.7%	400	394	-1.5%	825	731	-11.4%
VEHICLE THEFT	140	181	29.3%	359	308	-14.2%	499	489	-2.0%
ARSON	7	6	-14.3%	19	9	-52.6%	26	15	-42.3%
TOTALS	1640	1638	-0.1%	2296	2155	-6.1%	3936	3793	-3.6%
VIOLENT	123	135	9.8%	291	273	-6.2%	414	408	-1.4%
PROPERTY	1517	1503	-0.9%	2005	1882	-6.1%	3522	3385	-3.9%

The data in the district breakdowns does not include a small number of offenses in which the offense location (or reporting location if offense location was unknown) was entered without one of the 12 valid division assignments. Districts are not equal in geographic size, demographics, zoning/development, and other factors that influence the rate of crimes committed in an area. Therefore, the comparison of raw offense totals across districts is **not** advisable.

Index Offenses Reported by Division and Service Area of Occurrence									
Northeast Service Area: June 2005-2006									
INDEX_CATEGORIES	North (C1)			Hickory Grove (C3)			Northeast Service Area		
	2005	2006	% Change	2005	2006	% Change	2005	2006	% Change
MURDER & NON-NEGLIGENT MANSLAUGHTER	7	4	-42.9%	4	3	-25.0%	11	7	-36.4%
RAPE	17	35	105.9%	17	17	0.0%	34	52	52.9%
ACTUAL	15	34	126.7%	15	14	-6.7%	30	48	60.0%
ATTEMPTED	2	1	-50.0%	2	3	50.0%	4	4	0.0%
ROBBERY	110	156	41.8%	133	149	12.0%	243	305	25.5%
ARMED	95	135	42.1%	105	119	13.3%	200	254	27.0%
STRONG-ARM	15	21	40.0%	28	30	7.1%	43	51	18.6%
AGGRAVATED ASSAULT	162	179	10.5%	200	177	-11.5%	362	356	-1.7%
BURGLARY	777	1005	29.3%	763	854	11.9%	1540	1859	20.7%
RESIDENTIAL	533	687	28.9%	458	590	28.8%	991	1277	28.9%
COMMERCIAL*	244	318	30.3%	305	264	-13.4%	549	582	6.0%
LARCENY	2103	2213	5.2%	996	906	-9.0%	3099	3119	0.6%
FROM AUTO	1167	1244	6.6%	516	475	-7.9%	1683	1719	2.1%
BICYCLE	13	9	-30.8%	18	11	-38.9%	31	20	-35.5%
SHOPLIFTING	190	241	26.8%	87	70	-19.5%	277	311	12.3%
OTHERS	733	719	-1.9%	375	350	-6.7%	1108	1069	-3.5%
VEHICLE THEFT	451	471	4.4%	396	288	-27.3%	847	759	-10.4%
ARSON	19	26	36.8%	18	22	22.2%	37	48	29.7%
TOTALS	3646	4089	12.2%	2527	2416	-4.4%	6173	6505	5.4%
VIOLENT	296	374	26.4%	354	346	-2.3%	650	720	10.8%
PROPERTY	3350	3715	10.9%	2173	2070	-4.7%	5523	5785	4.7%

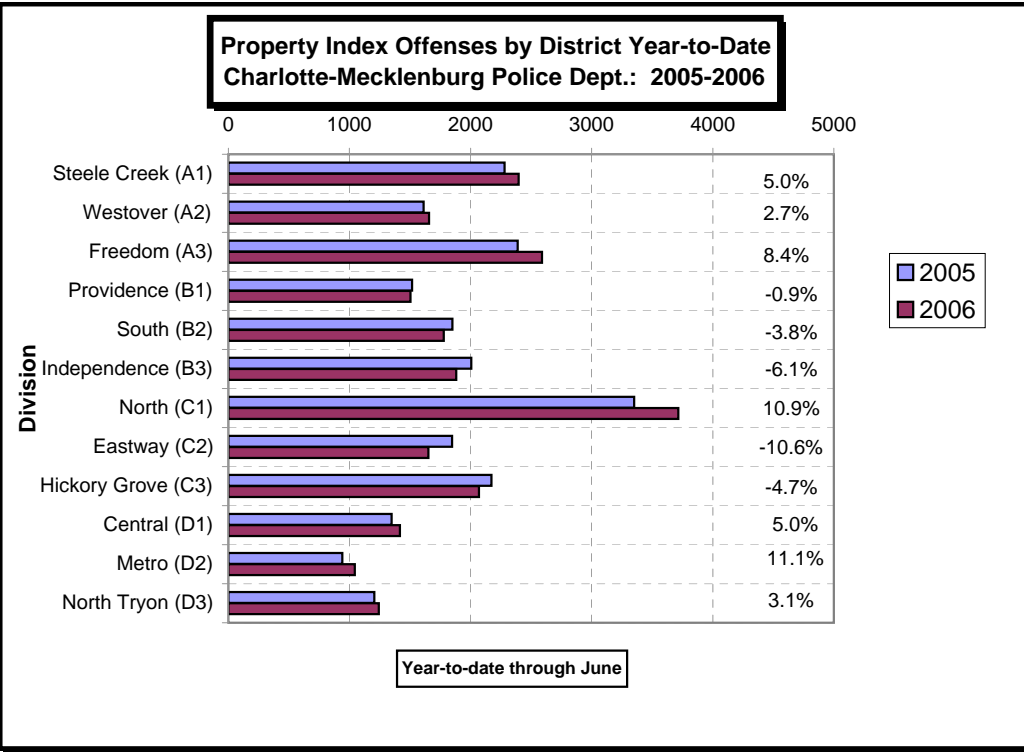
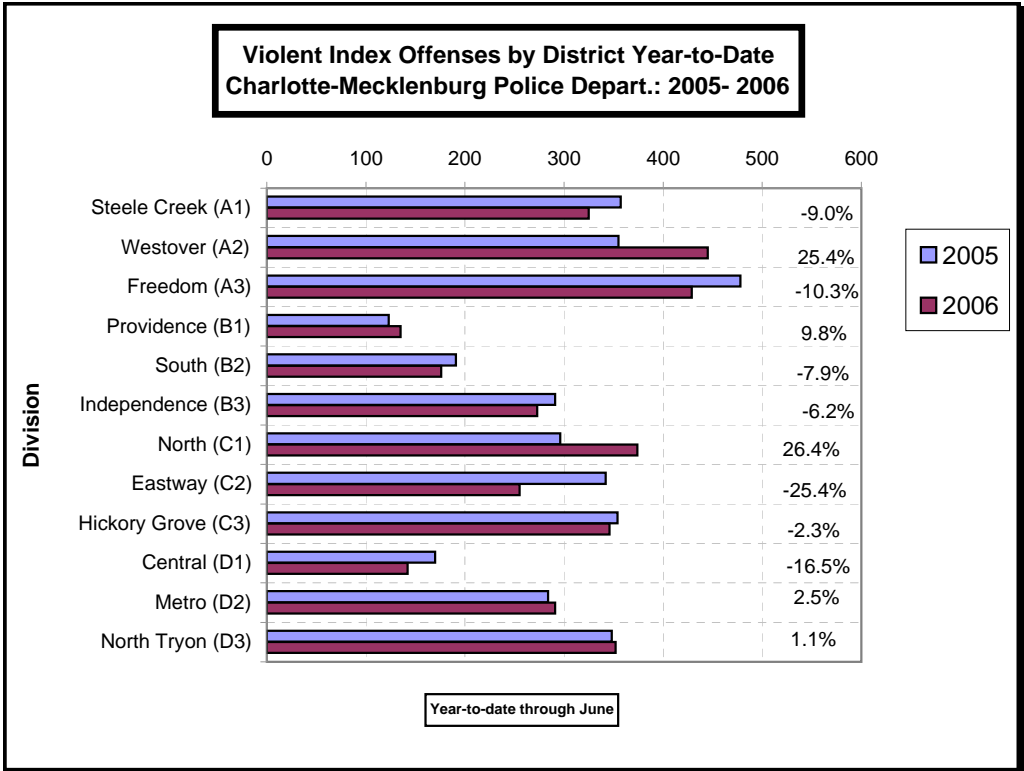
Index Offenses Reported by Division and Service Area of Occurrence									
Central Service Area: June 2005-2006									
INDEX_CATEGORIES	Central (D1)			Metro (D2)			Central Service Area		
	2005	2006	% Change	2005	2006	% Change	2005	2006	% Change
MURDER & NON-NEGLIGENT MANSLAUGHTER	2	2	0.0%	3	3	0.0%	5	5	0.0%
RAPE	17	14	-17.6%	3	9	200.0%	20	23	15.0%
ACTUAL	16	13	-18.8%	4	9	125.0%	20	22	10.0%
ATTEMPTED	1	1	0.0%	-1	0	-100.0%	0	1	NA
ROBBERY	90	70	-22.2%	107	76	-29.0%	197	146	-25.9%
ARMED	54	42	-22.2%	83	52	-37.3%	137	94	-31.4%
STRONG-ARM	36	28	-22.2%	24	24	0.0%	60	52	-13.3%
AGGRAVATED ASSAULT	61	56	-8.2%	171	203	18.7%	232	259	11.6%
BURGLARY	184	171	-7.1%	301	325	8.0%	485	496	2.3%
RESIDENTIAL	58	67	15.5%	238	202	-15.1%	296	269	-9.1%
COMMERCIAL	126	104	-17.5%	63	123	95.2%	189	227	20.1%
LARCENY	1010	1001	-0.9%	447	492	10.1%	1457	1493	2.5%
FROM AUTO	546	551	0.9%	193	228	18.1%	739	779	5.4%
BICYCLE	11	5	-54.5%	7	3	-57.1%	18	8	-55.6%
SHOPLIFTING	27	48	77.8%	19	11	-42.1%	46	59	28.3%
OTHERS	426	397	-6.8%	228	250	9.6%	654	647	-1.1%
VEHICLE THEFT	155	231	49.0%	184	220	19.6%	339	451	33.0%
ARSON	0	13	NA	9	8	-11.1%	9	21	133.3%
TOTALS	1519	1558	2.6%	1225	1336	9.1%	2744	2894	5.5%
VIOLENT	170	142	-16.5%	284	291	2.5%	454	433	-4.6%
PROPERTY	1349	1416	5.0%	941	1045	11.1%	2290	2461	7.5%

Commercial burglary totals for the Hickory Grove Division currently include 12 cases (storage bins) that will be subtracted from July burglary totals.

Index Offenses Reported by Division and Service Area of Occurrence									
East Service Area: June 2005-2006									
INDEX_CATEGORIES	Eastway (C2)			North Tryon (D3)			East Service Area		
	2005	2006	% Change	2005	2006	% Change	2005	2006	% Change
MURDER & NON-NEGLIGENT MANSLAUGHTER	2	1	-50.0%	3	4	33.3%	5	5	0.0%
RAPE	17	9	-47.1%	7	6	-14.3%	24	15	-37.5%
ACTUAL	16	7	-56.3%	6	6	0.0%	22	13	-40.9%
ATTEMPTED	1	2	100.0%	1	0	-100.0%	2	2	0.0%
ROBBERY	197	134	-32.0%	158	138	-12.7%	355	272	-23.4%
ARMED	154	106	-31.2%	127	106	-16.5%	281	212	-24.6%
STRONG-ARM	43	28	-34.9%	31	32	3.2%	74	60	-18.9%
AGGRAVATED ASSAULT	126	111	-11.9%	180	204	13.3%	306	315	2.9%
BURGLARY	457	404	-11.6%	377	450	19.4%	834	854	2.4%
RESIDENTIAL	326	308	-5.5%	240	257	7.1%	566	565	-0.2%
COMMERCIAL	131	96	-26.7%	140	193	37.9%	271	289	6.6%
LARCENY	1115	951	-14.7%	615	558	-9.3%	1730	1509	-12.8%
FROM AUTO	421	415	-1.4%	313	275	-12.1%	734	690	-6.0%
BICYCLE	9	13	44.4%	3	6	100.0%	12	19	58.3%
SHOPLIFTING	297	204	-31.3%	30	32	6.7%	327	236	-27.8%
OTHERS	388	319	-17.8%	269	245	-8.9%	657	564	-14.2%
VEHICLE THEFT	264	294	11.4%	208	217	4.3%	472	511	8.3%
ARSON	12	4	-66.7%	5	17	240.0%	17	21	23.5%
TOTALS	2190	1908	-12.9%	1553	1594	2.6%	3743	3502	-6.4%
VIOLENT PROPERTY	342	255	-25.4%	348	352	1.1%	690	607	-12.0%
	1848	1653	-10.6%	1205	1242	3.1%	3053	2895	-5.2%

Index Offenses Reported by Division and Service Area of Occurrence									
South Service Area: June 2005-2006									
INDEX_CATEGORIES	Steele Creek (A1)			South (B2)			South Service Area		
	2005	2006	% Change	2005	2006	% Change	2005	2006	% Change
MURDER & NON-NEGLIGENT MANSLAUGHTER	1	4	300.0%	0	4	NA	1	8	700.0%
RAPE	18	17	-5.6%	7	6	-14.3%	25	23	-8.0%
ACTUAL	18	14	-22.2%	7	4	-42.9%	25	18	-28.0%
ATTEMPTED	0	3	NA	0	2	NA	0	5	NA
ROBBERY	146	136	-6.8%	95	70	-26.3%	241	206	-14.5%
ARMED	122	110	-9.8%	83	52	-37.3%	205	162	-21.0%
STRONG-ARM	24	26	8.3%	12	18	50.0%	36	44	22.2%
AGGRAVATED ASSAULT	192	168	-12.5%	89	96	7.9%	281	264	-6.0%
BURGLARY	434	477	9.9%	426	369	-13.4%	860	846	-1.6%
RESIDENTIAL	263	296	12.5%	304	266	-12.5%	567	562	-0.9%
COMMERCIAL	171	181	5.8%	122	103	-15.6%	293	284	-3.1%
LARCENY	1463	1555	6.3%	1172	1171	-0.1%	2635	2726	3.5%
FROM AUTO	788	881	11.8%	654	659	0.8%	1442	1540	6.8%
BICYCLE	5	5	0.0%	6	5	-16.7%	11	10	-9.1%
SHOPLIFTING	124	119	-4.0%	86	117	36.0%	210	236	12.4%
OTHERS	546	550	0.7%	426	390	-8.5%	972	940	-3.3%
VEHICLE THEFT	372	339	-8.9%	237	215	-9.3%	609	554	-9.0%
ARSON	12	25	108.3%	14	23	64.3%	26	48	84.6%
TOTALS	2638	2721	3.1%	2040	1954	-4.2%	4678	4675	-0.1%
VIOLENT PROPERTY	357	325	-9.0%	191	176	-7.9%	548	501	-8.6%
	2281	2396	5.0%	1849	1778	-3.8%	4130	4174	1.1%

The data in the district breakdowns does not include a small number of offenses in which the offense location (or reporting location if offense location was unknown) was entered without one of the 12 valid division assignments. Districts are not equal in geographic size, demographics, zoning/development, and other factors that influence the rate of crimes committed in an area. Therefore, the comparison of raw offense totals across districts is **not** advisable.



The data in the district breakdowns does not include a small number of offenses in which the offense location (or reporting location if offense location was unknown) was entered without one of the 12 valid division assignments. Districts are not equal in geographic size, demographics, zoning/development, and other factors that influence the rate of crimes committed in an area. Therefore, the comparison of raw offense totals across districts is **not** advisable.

**Arrests by Charlotte-Mecklenburg Police Department**  
**Year-To-Date: 2005-2006**  
**(Through June)**

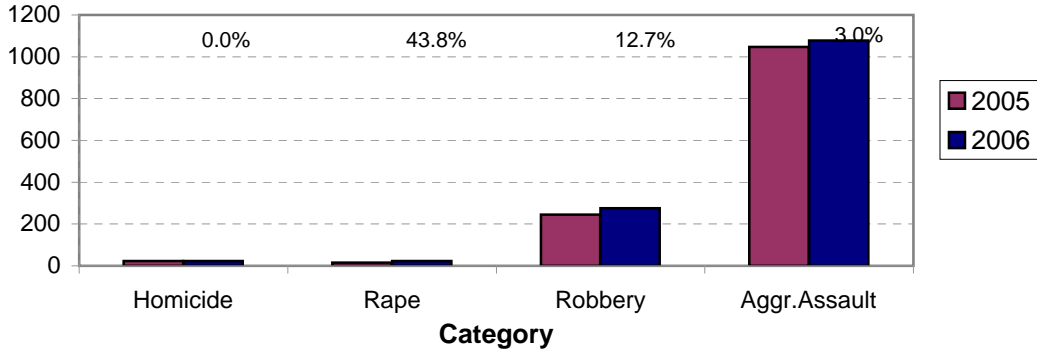
CATEGORY	ADULTS (AGE 18 & OLDER):			JUVENILES ( UNDER 18):			TOTAL ARRESTS:		
	2005 Y-T-D	2006 Y-T-D	% CHANGE	2005 Y-T-D	2006 Y-T-D	% CHANGE	2005 Y-T-D	2006 Y-T-D	% CHANGE
Murder/Non-Negligent Manslaughter	21	23	9.5%	2	0	-100.0%	23	23	0.0%
Negligent & Vehicular Manslaughter	3	1	-66.7%	0	0	NA	3	1	-66.7%
Rape	16	18	12.5%	0	5	NA	16	23	43.8%
Robbery	190	190	0.0%	55	86	56.4%	245	276	12.7%
Aggravated Assault	907	922	1.7%	140	156	11.4%	1047	1078	3.0%
Burglary	311	349	12.2%	123	109	-11.4%	434	458	5.5%
Larceny	763	699	-8.4%	263	263	0.0%	1026	962	-6.2%
Vehicle Theft	56	43	-23.2%	53	49	-7.5%	109	92	-15.6%
Non-Aggravated Assault	990	984	-0.6%	412	377	-8.5%	1402	1361	-2.9%
Arson	5	8	60.0%	18	14	-22.2%	23	22	-4.3%
Forgery/Counterfiet	70	78	11.4%	2	0	-100.0%	72	78	8.3%
Fraud	277	307	10.8%	3	4	33.3%	280	311	11.1%
Embezzlement	35	53	51.4%	3	3	0.0%	38	56	47.4%
Stolen Property	246	275	11.8%	64	86	34.4%	310	361	16.5%
Vandalism	101	143	41.6%	128	125	-2.3%	229	268	17.0%
Weapons	295	421	42.7%	38	37	-2.6%	333	458	37.5%
Prostitution	110	109	-0.9%	1	3	200.0%	111	112	0.9%
Sex Offenses	86	101	17.4%	14	8	-42.9%	100	109	9.0%
Drugs	1341	1646	22.7%	135	189	40.0%	1476	1835	24.3%
Gambling	2	2	0.0%	0	0	NA	2	2	0.0%
Offenses vs. Family	4	4	0.0%	0	0	NA	4	4	0.0%
DUI	1010	981	-2.9%	5	10	100.0%	1015	991	-2.4%
Liquor	86	96	11.6%	5	4	-20.0%	91	100	9.9%
Disorder.Conduct	253	293	15.8%	184	175	-4.9%	437	468	7.1%
Other Non-Traffic	3988	4489	12.6%	410	570	39.0%	4398	5059	15.0%
<b>VIOLENT INDEX<sup>1</sup></b>	1134	1153	1.7%	197	247	25.4%	1331	1400	5.2%
<b>PROPERTY INDEX<sup>2</sup></b>	1135	1099	-3.2%	457	435	-4.8%	1592	1534	-3.6%
<b>INDEX SUBTOTAL</b>	2269	2252	-0.7%	654	682	4.3%	2923	2934	0.4%
<b>PART 2 SUBTOTAL<sup>3</sup></b>	8897	9983	12.2%	1404	1591	13.3%	10301	11574	12.4%
<b>TOTAL</b>	11166	12235	9.6%	2058	2273	10.4%	13224	14508	9.7%

<sup>1</sup>Violent Index includes murder and non-negligent manslaughter, rape, robbery, and aggravated assault.

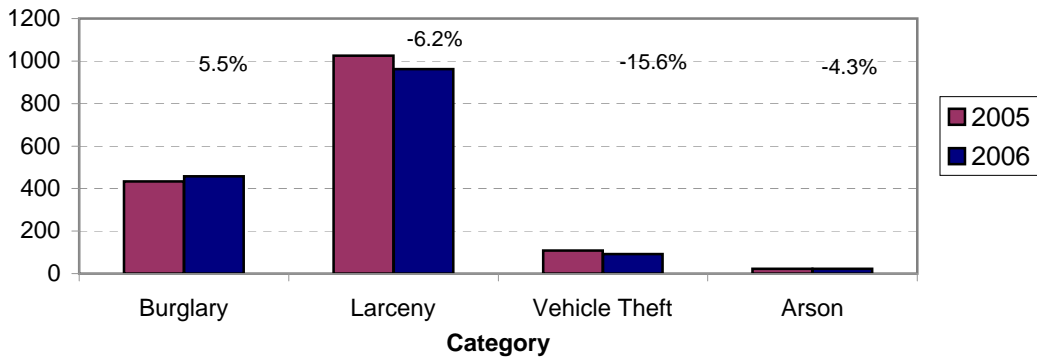
<sup>2</sup>Property Index includes burglary, larceny, vehicle theft, and arson.

<sup>3</sup>Part 2 crimes include crime categories not counted in the Index totals.

**Violent Index Arrests Year-to-Date  
Charlotte-Mecklenburg Police Department: 2005-2006  
(Through June)**

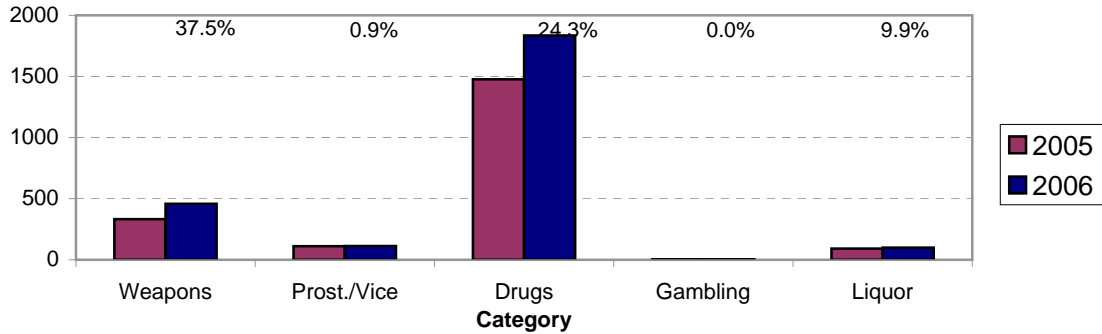


**Property Index Arrests Year-to-Date  
Charlotte-Mecklenburg Police Department: 2004-2005  
(Through June)**

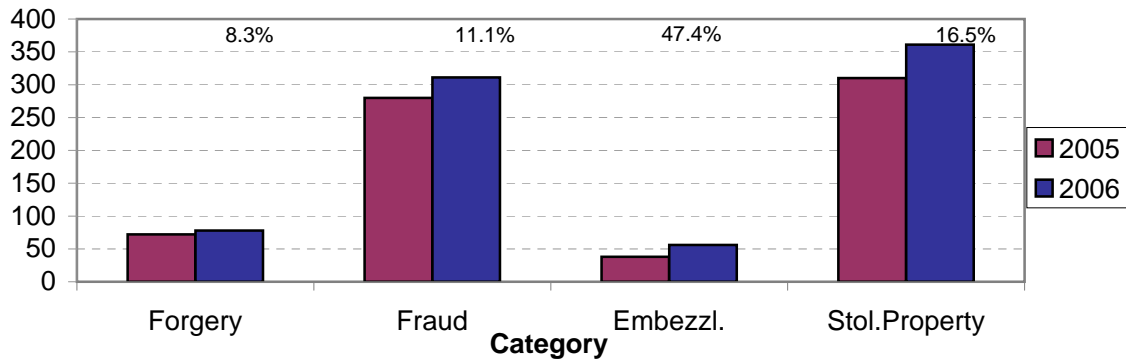




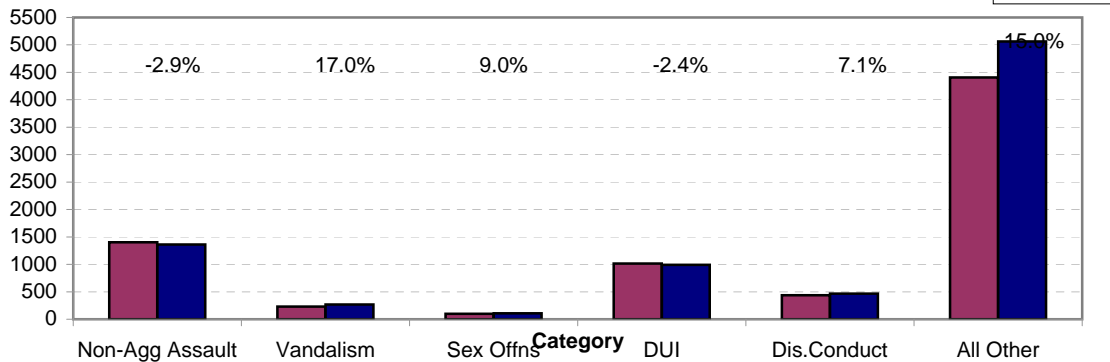
**Arrests for Vice/CCW/Drugs/Etc. Year-to-Date  
Charlotte-Mecklenburg Police Department: 2005- 2006  
(Through June)**



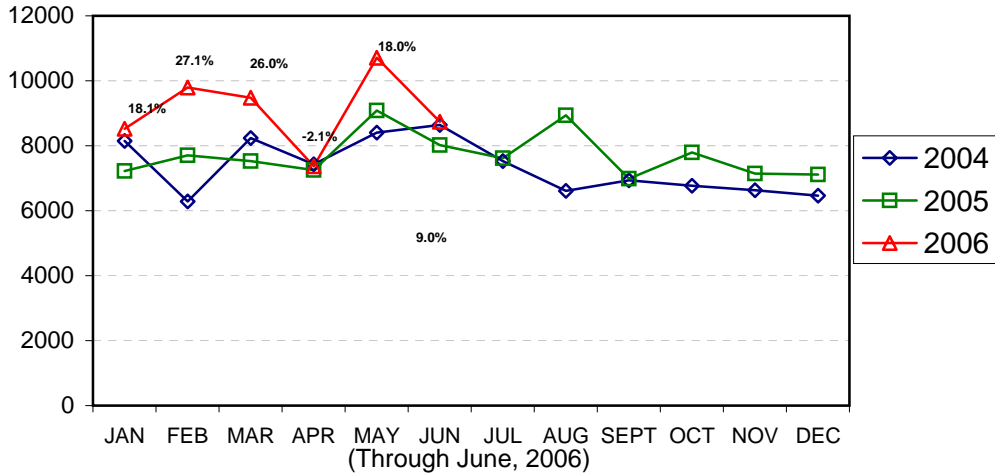
**Arrests for Property/White Collar Crime Year-to-Date  
Charlotte-Mecklenburg Police Department: 2005- 2006  
(Through June)**



**Arrests for Other Categories Year-to-Date  
Charlotte-Mecklenburg Police Department: 2005 - 2006  
(Through June)**

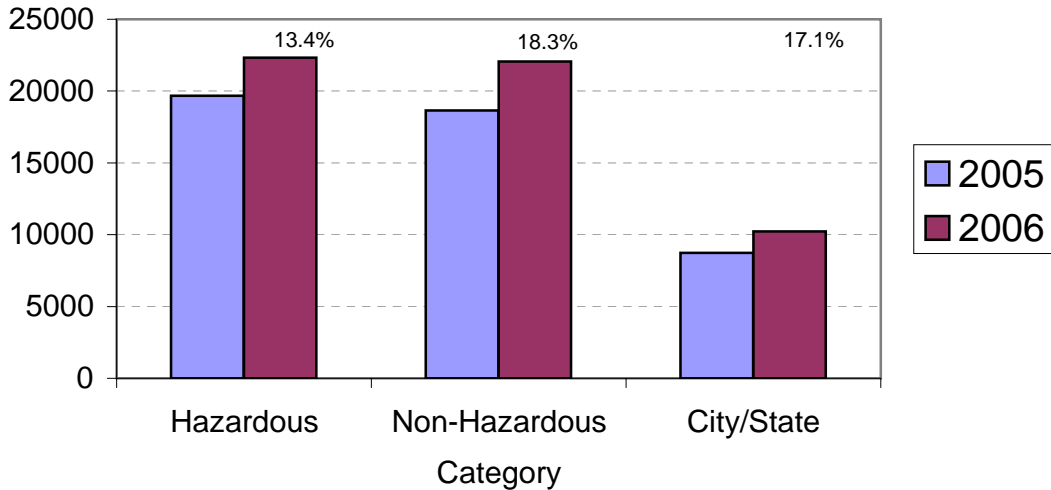


### Total Citation Enforcement by Month Charlotte-Mecklenburg Police Dept.: 2004-2006

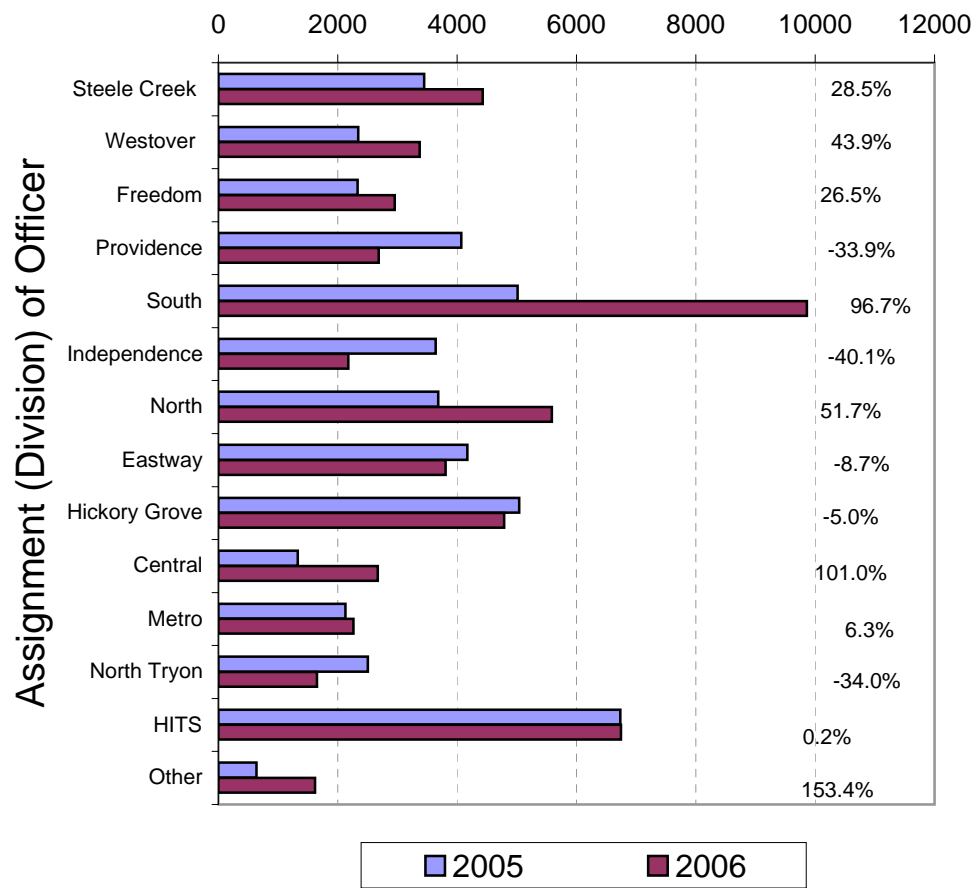


(Includes Hazardous, Non-Hazardous, and City/State Citations; percentages are current month compared to same month in previous year. Percentages are the change from current month to same month in past year. Monthly totals may be affected by data entry delays.)

### CMPD Citation Enforcement by Category Year-to-Date, 2005 - 2006 (Through June, 2006)



**Citations Issued Year-to-Date by CMPD Divisions  
2005 - 2006  
(Through June, 2006)**



**Citations Issued by the Charlotte Mecklenburg Police Officers Year-to-Date  
(Through June, 2006)**

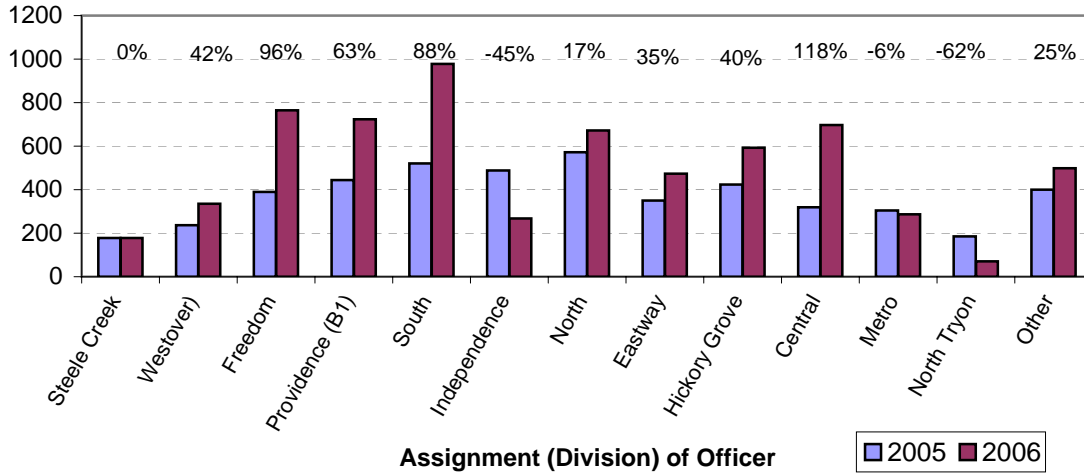
	2005	2006	% Change
Hazardous	19,680	22,317	13.4%
Non-Hazardous	18,655	22,069	18.3%
Other City/State Statute/Ordinance	8,736	10,228	17.1%
<b>Total</b>	<b>47,071</b>	<b>54,614</b>	<b>16.0%</b>

**"Safe Speed" Program: 2005-2006  
(Through June, 2006)**

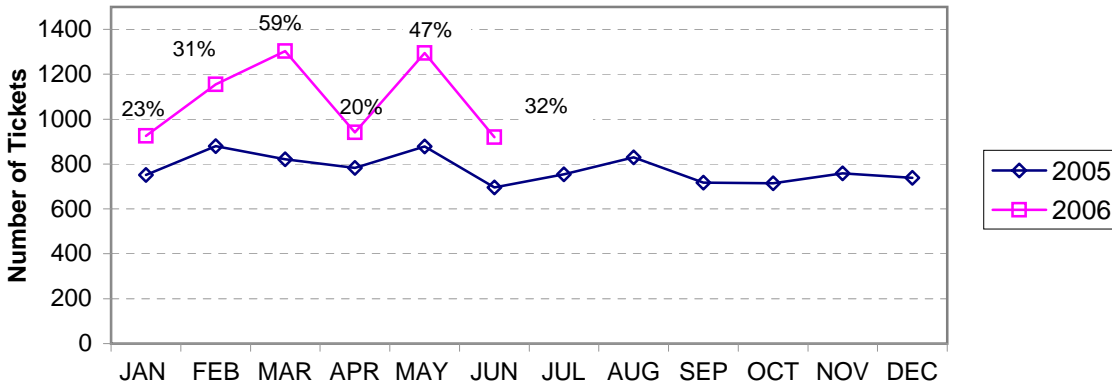
	2005	2006
Total Citations	18296	14637

(Citations issued through the "Safe Speed" program are **not** included in the summary charts/graphs; 2006 data only includes Jan- May 26.)

**Warning Ticket Violations Issued by Division  
Charlotte-Mecklenburg Police Department, 2005- 2006  
Through June, 2006**



**Total Warning Ticket Violations Issued by Month  
Charlotte-Mecklenburg Police Department: 2005 - 2006**



**Warning Tickets Issued Year-to-Date  
Charlotte-Mecklenburg Police Department  
Through June, 2006**

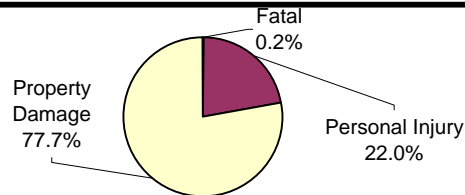
	2005	2006	% Change
Total Warning Tickets	4811	6538	35.9%

**Traffic Collision Reports  
Charlotte-Mecklenburg Police Department  
Year-to-Date: 2005-2006  
(Through June)**

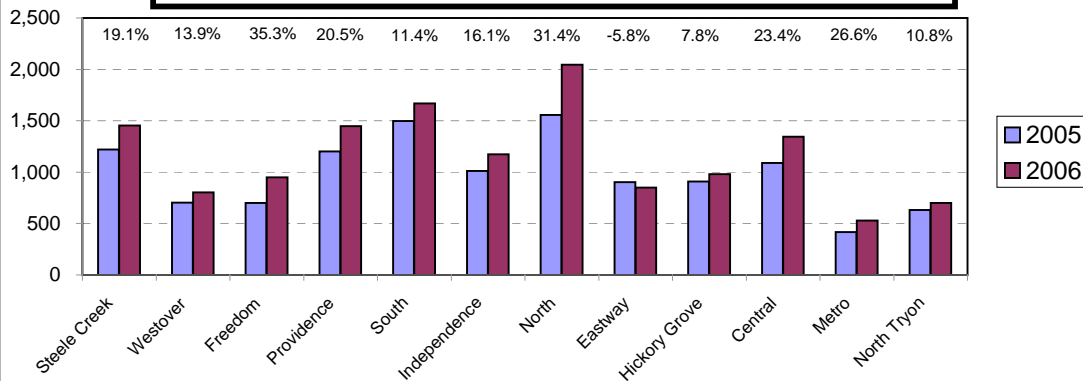
<u>Type</u>	<u>2005</u>	<u>2006</u>	<u>% Change</u>
Fatal Collisions	23	33	43.5%
Vehicle Occupants Killed	20	27	35.0%
Pedestrians Killed	4	8	100.0%
Personal Injury Collisions	2860	3100	8.4%
Property Damage Collisions	9014	10899	20.9%
Total Collisions	11897	14032	17.9%

\* The number of fatal collisions and the number of persons killed (fatalities) in those incidents is taken from the HITS file. Their records are updated for deaths that occur after the initial report is filed. Figures for 2005 may be adjusted after publication of 2005 Annual Report.

**Traffic Collisions Reported by Type  
Charlotte-Mecklenburg Police Department:  
2006 Year-to-Date  
(Through June)**



**Traffic Collisions Reported by Charlotte-Mecklenburg Police Dept.  
Year-to-Date By Location (Division) : 2005 -2006  
(Through June)**



**CITIZEN-INITIATED CALLS FOR SERVICE<sup>1</sup> BY TYPE  
CHARLOTTE-MECKLENBURG POLICE DEPARTMENT**

<u>Type of Call<sup>2</sup></u>	<u>2005 Year-to-Date Through June</u>	<u>2006 Year-to-Date Through June</u>	<u>Year-to-Date % Change</u>
ABC RELATED	1083	1104	1.9%
ACCIDENT	17635	17818	1.0%
ALARM	16504	17409	5.5%
ANIMAL CONTROL <sup>3</sup>	116	145	25.0%
ASSAULT	2255	2356	4.5%
ASSAULT WITH DEADLY WEAPON	832	873	4.9%
ASSIST OTHER AGENCY	4043	4285	6.0%
BOMB THREAT	48	53	10.4%
BREAK/ENTER	8928	9944	11.4%
CDCP CLINICIAN VISIT	0	387	NA
COMMUNICATING THREATS	1769	1706	-3.6%
COUNTY SECURITY <sup>3</sup>	5	4	-20.0%
CRIMINAL INTELLIGENCE	11	8	-27.3%
CRITICAL INCIDENT	0	12	NA
DAMAGE TO PROPERTY	4096	3827	-6.6%
DEATH	145	145	0.0%
DISTURBANCE	12874	13934	8.2%
DOMESTIC INCIDENT	18146	17853	-1.6%
DRUG RELATED	1888	2087	10.5%
EXTORTION/BLACKMAIL	0	2	NA
FIGHT	1680	1766	5.1%
FIRE	4	6	50.0%
FIRE CASE	41	42	2.4%
FRAUD/FORGERY	1559	1916	22.9%
GAMBLING	8	8	0.0%
HARASSMENT	1024	845	-17.5%
HIT AND RUN	3641	3803	4.4%
JUVENILE RELATED	1275	1270	-0.4%
KIDNAPPING	105	118	12.4%
LAKE ENFORCEMENT	29	9	-69.0%
LARCENY	14564	14274	-2.0%
LOITERING	2320	2713	16.9%
MAJOR INCIDENT	10	4	-60.0%
MISSING PERSON	3633	3840	5.7%
NOISE COMPLAINT	7118	7405	4.0%
OFFENSE AGAINST FAMILY	2	17	750.0%
OFFICER CALLED IN	364	304	-16.5%
OVERDOSE	212	49	-76.9%
PORNOGRAPHY	2	8	300.0%
PROPERTY	3065	3581	16.8%
PROSTITUTION	593	620	4.6%
PUBLIC SERVICE	10857	9405	-13.4%
QUALITY OF LIFE	610	758	24.3%
ROBBERY	1667	1624	-2.6%
SEX CRIME	553	629	13.7%
SPECIAL SERVICE REQUEST	3	3	0.0%
SUICIDE	577	647	12.1%
SUSPICIOUS PERSON	9679	10248	5.9%
TRAFFIC RELATED	5371	5791	7.8%
TRESPASS	2163	2030	-6.1%
VEHICLE RELATED	17006	17738	4.3%
VIOLENT CRIMES TASK FORCE	1	2	100.0%
WARRANT RELATED	1837	1628	-11.4%
WEAPON RELATED	3721	4367	17.4%
ZONE CHECK-ADVISED EVENT	0	5	NA
911 HANG UP / CALLBACK	13109	9361	-28.6%
<b>TOTAL</b>	<b>198781</b>	<b>200786</b>	<b>1.0%</b>

<sup>1</sup>These totals exclude duplicate and cancelled calls for service; they include calls handled by the Crime Reporting Unit as well as by division field officers, detectives and related CMPD staff.

<sup>2</sup>The type of call is determined from the 911 call, unless updated by an officer assigned to respond.

<sup>3</sup>In this summary, calls to Animal Control, Mecklenburg County Security, or Davidson Police are not included unless they also involve the dispatching of C-MPD field officers or detectives.

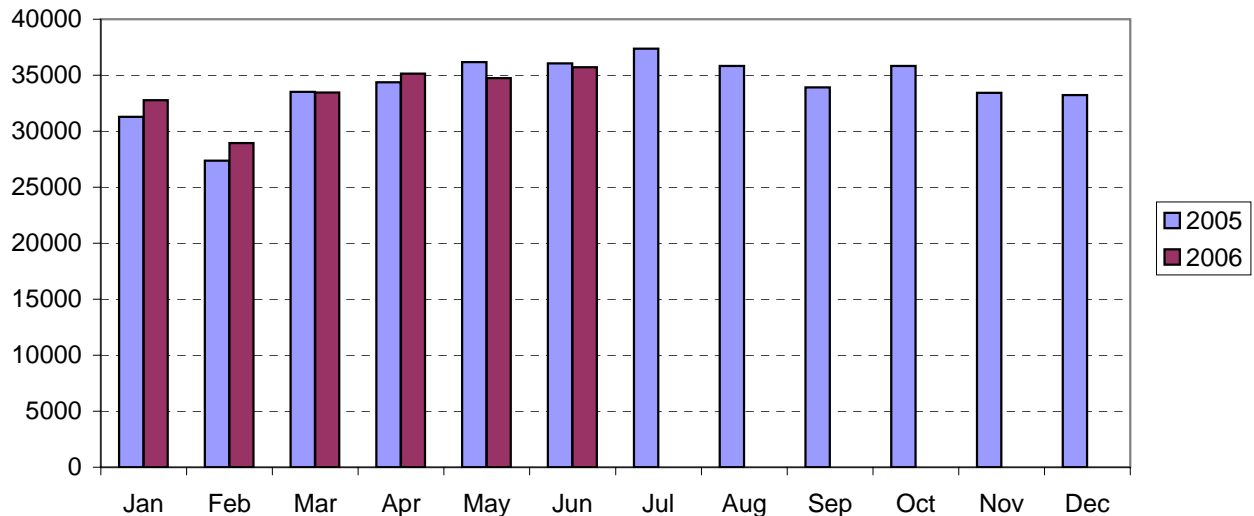
**CITIZEN-INITIATED CALLS FOR SERVICE BY ORIGINATING CMPD DIVISION<sup>1,2</sup>**  
 (Based on District of Call Origination, Not on Assigned District of Responding Units)

<u>District</u>	<u>2005 Year-to-Date Through June</u>	<u>2006 Year-to-Date Through June</u>	<u>Year-to-Date % Change</u>
Central-01 (D1)	12573	12523	-0.4%
Metro-02 (D2)	11150	11420	2.4%
Eastway-06 (C2)	14889	14210	-4.6%
North Tryon-07 (D3)	11938	12439	4.2%
North-11 (C1)	24056	26505	10.2%
Hickory Grove-12 (C3)	18216	18717	2.8%
Providence-16 (B1)	13787	13602	-1.3%
Independence-17 (B3)	17537	17400	-0.8%
Steele Creek-21 (A1)	17139	17819	4.0%
South-22 (B2)	18241	17958	-1.6%
Westover-26 (A2)	13581	14436	6.3%
Freedom-27 (A3)	19677	20794	5.7%

<sup>1</sup>These totals exclude duplicate and cancelled calls for service; they include calls handled by the Crime Reporting Unit as well as by division field officers, detectives and other CMPD staff.

<sup>2</sup>Calls where the location could not be assigned to one of the divisions are not included in this chart.

**Citizen-Initiated Calls for Service<sup>1</sup> by Month**  
**Charlotte-Mecklenburg Police Department: 2005-2006**



<sup>1</sup>These totals exclude duplicate and cancelled calls for service; they include calls handled by the Crime Reporting Unit as well as by division field officers, detectives and other CMPD staff.

## Uniform Crime Reporting Procedures

The Charlotte-Mecklenburg Police Department reports offense and arrest statistics in accordance with standard Uniform Crime Reporting (UCR) guidelines. UCR policy states that any adjustments to previous months can be made on the current month's report:

...In tabulating crime counts, an agency may find that offense totals for past months require adjustments due to developments in the investigation or other handling of the matter. It may be necessary to adjust totals reported to UCR for the past month or prior months. Needed adjustments can be made on the current month's report and do not affect the reliability of the figures in that such adjustments tend to equalize each other from month to month over a period of time.

- *Uniform Crime Reporting Handbook*, FBI, 1984, p. 42-43

We are required to report crime monthly to the UCR program, and we do therefore make an effort to process monthly changes in a timely manner. However, occasionally due to the review and processing required for reclassifying, unfounding or clearing cases, the current month's totals may reflect the processing of a backlog of these changes from previous months.

Users of the data are cautioned that conclusions about substantial changes in crime trends or in clearance rates based on only a single month's data or trend may reflect some of these adjustments. For this reason, in addition to the monthly and year-to-date trends on Page 1, the monthly report routinely includes a comparison for the previous 12 months (p. 4), as well as graphs that provide seasonal/monthly comparisons over a five-year period (p. 5-8).

### UCR Definitions and Terms:

**Index Crime:** the eight offenses that the national UCR program tracks on a yearly basis to gauge trends in the extent of crime, despite differences among state and local criminal statutes. These offenses were selected on the basis of several factors: seriousness, frequency of occurrence, pervasiveness in all geographic areas, and/or likelihood of being reported to law enforcement.

**Violent Index:** includes the offenses of murder/non-negligent manslaughter, rape, robbery, and aggravated assault

**Property Index:** includes the offenses of burglary, larceny, vehicle theft and arson

**Murder/non-negligent manslaughter:** the willful killing of one human being by another

**Rape:** the carnal knowledge of a female forcibly and against her will [Note: This offense does not include other sex offenses or statutory (non-forcible) rape.]

**Robbery:** the taking or attempt to take anything of value from the care, custody, or control of a person or persons by force, threat of force or violence, or by putting the victim in fear.

**Aggravated assault:** an unlawful attack by one person on another for the purpose of inflicting severe or aggravated bodily injury; includes 1) all assaults in which a weapon of any type is used or is threatened to be used and/or 2) all assaults where serious injury occurs.

**Burglary:** the unlawful entry or attempted entry of a structure to commit a felony or a theft

**Larceny-Theft:** the unlawful taking (or attempt), carrying, leading, or riding away of property from the possession or constructive possession of another [Note: Larceny/theft of a motor vehicle is classed separately.]

**Vehicle Theft:** the theft or attempted theft of a motor vehicle (a self-propelled vehicle that runs on land and not on rails, excluding farm and construction equipment)



Arson: the willful or malicious burning or attempt to burn, with or without intent to defraud, a structure, motor vehicle, personal property of another, etc.

Hierarchy rule: For cases involving multiple-offenses, the incident is classified and counted based on the highest offense on a hierarchy of crimes established by UCR. For example, for an incident involving a rape and a burglary, the incident would be counted in the rape category because rape is higher than burglary on the hierarchy.

Clearance: A case is considered cleared when either at least one arrest is made for the offense or when an offender's identity is established by investigation but the offender will not be arrested for reasons outside law enforcement control (offender dies, victim refuses to prosecute, district attorney declines prosecution, extradition is refused, etc.).

Unfounding: A case is "unfounded" and subtracted from the crime counts when investigation establishes that the incident did not actually occur or that the actions within the incident are not criminal based on current law.

For additional information, please consult the *UCR Handbook* on the FBI website at <http://www.fbi.gov/ucr/ucr.htm>.

This report was compiled by the Research, Planning, and Analysis Division.

We make an effort to present the most accurate information available at the time this report is published. Please notify the Research, Planning, and Analysis office if you have any questions about the data in this report or about an error that was missed in proofing the report.