



**CHARLOTTE-MECKLENBURG POLICE DEPARTMENT
MONTHLY SUMMARY REPORT
MARCH, 2006**

**Darrel Stephens
Chief of Police**

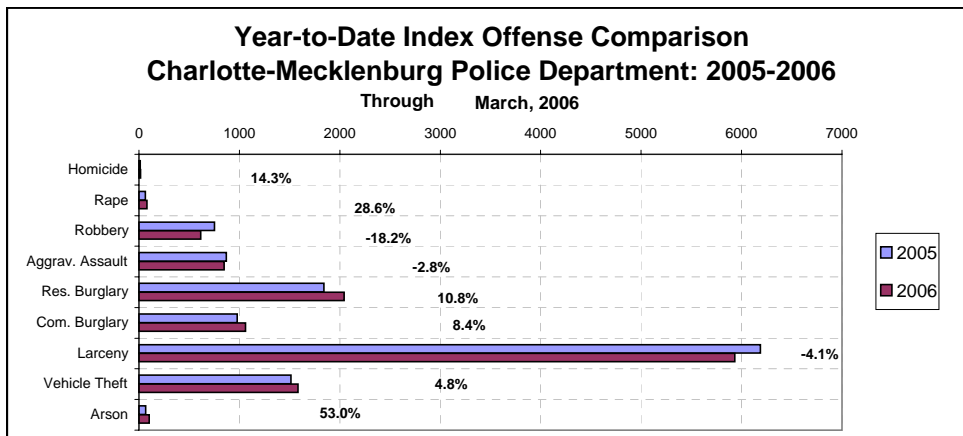
INDEX OFFENSES REPORTED TO CHARLOTTE-MECKLENBURG POLICE DEPARTMENT

March, 2006 INDEX OFFENSES	# THIS MONTH	% OF ALL INDEX	# LAST MONTH	MONTHLY % CHANGE	SAME MONTH LAST YEAR	MONTHLY % CHANGE	THIS YEAR TO DATE	LAST YEAR TO DATE	ANNUAL % CHANGE
HOMICIDE (MURDER & NON- NEGLIGENT MANSLAUGHTER)	5	0.1%	4	25.0%	4	25.0%	16	14	14.3%
RAPE TOTAL	34	0.8%	21	61.9%	17	100.0%	81	63	28.6%
ACTUAL	30	0.7%	18	66.7%	15	100.0%	73	60	21.7%
ATTEMPT	4	0.1%	3	33.3%	2	100.0%	8	3	166.7%
ROBBERY TOTAL	226	5.3%	152	48.7%	221	2.3%	616	753	-18.2%
ARMED	186	4.4%	124	50.0%	178	4.5%	510	603	-15.4%
STRONG-ARM	40	0.9%	28	42.9%	43	-7.0%	106	150	-29.3%
AGGRAVATED ASSAULT TOTAL	303	7.1%	242	25.2%	323	-6.2%	846	870	-2.8%
BURGLARY TOTAL	1085	25.5%	796	36.3%	974	11.4%	3103	2822	10.0%
RESIDENTIAL	727	17.1%	543	33.9%	634	14.7%	2042	1843	10.8%
COMMERCIAL	358	8.4%	253	41.5%	340	5.3%	1061	979	8.4%

FORCE	885	20.8%	661	33.9%	792	11.7%	2558	2308	10.8%
NO FORCE	124	2.9%	80	55.0%	115	7.8%	318	317	0.3%
ATTEMPT	76	1.8%	55	38.2%	67	13.4%	227	197	15.2%
LARCENY TOTAL	2031	47.7%	1837	10.6%	2197	-7.6%	5933	6186	-4.1%
\$200 AND OVER	1017	23.9%	937	8.5%	1137	-10.6%	2995	3070	-2.4%
\$50 TO \$200	380	8.9%	338	12.4%	404	-5.9%	1122	1211	-7.3%
UNDER \$50	634	14.9%	562	12.8%	656	-3.4%	1816	1905	-4.7%

FROM AUTO	1029	24.2%	926	11.1%	1119	-8.0%	3047	3160	-3.6%
BICYCLE	14	0.3%	7	100.0%	10	40.0%	30	29	3.4%
SHOPLIFTING	229	5.4%	193	18.7%	224	2.2%	645	590	9.3%
OTHERS	759	17.8%	711	6.8%	844	-10.1%	2211	2407	-8.1%
VEHICLE THEFT TOTAL	540	12.7%	462	16.9%	537	0.6%	1585	1513	4.8%
ARSON TOTAL	36	0.8%	38	-5.3%	25	44.0%	101	66	53.0%
TOTALS	4260	100.0%	3552	19.9%	4298	-0.9%	12281	12287	0.0%
VIOLENT	568	13.3%	419	35.6%	565	0.5%	1559	1700	-8.3%
PROPERTY	3692	86.7%	3133	17.8%	3733	-1.1%	10722	10587	1.3%

NOTE: These totals include offenses reported to the Charlotte-Mecklenburg Police Department in accordance with the Uniform Crime Reporting Program. Totals for homicide do not include cases investigated by the police but classed by UCR guidelines as negligent manslaughter or as "justifiable homicide."

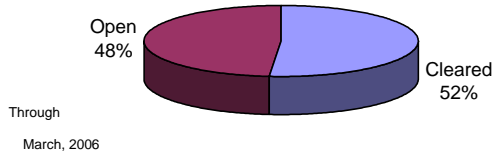


INDEX CLEARANCES REPORTED BY THE CHARLOTTE-MECKLENBURG POLICE DEPARTMENT

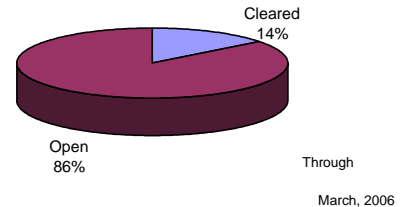
March, 2006 INDEX CLEARANCES	THIS MONTH:		LAST MONTH:		SAME MO. LAST YR:		THIS YEAR TO DATE:		LAST YEAR TO DATE:	
	NO.	%	NO.	%	NO.	%	NO.	%	NO.	%
MURDER & NON-NEGLIGENT MANSLAUGHTER ¹	3	60.0%	0	0.0%	1	25.0%	8	50.0%	7	50.0%
RAPE TOTAL	26	76.5%	20	95.2%	12	70.6%	63	77.8%	62	98.4%
ACTUAL	22	73.3%	18	100.0%	9	60.0%	57	78.1%	51	85.0%
ATTEMPT	4	100.0%	2	66.7%	3	150.0%	6	75.0%	11	366.7%
ROBBERY TOTAL	56	24.8%	81	53.3%	80	36.2%	243	39.4%	190	25.2%
ARMED	49	26.3%	66	53.2%	63	35.4%	194	38.0%	150	24.9%
STRONG-ARM	7	17.5%	15	53.6%	17	39.5%	49	46.2%	40	26.7%
AGGRAVATED ASSAULT TOTAL	149	49.2%	166	68.6%	131	40.6%	489	57.8%	420	48.3%
BURGLARY TOTAL	77	7.1%	85	10.7%	117	12.0%	260	8.4%	397	14.1%
RESIDENTIAL	58	8.0%	69	12.7%	91	14.4%	202	9.9%	321	17.4%
COMMERCIAL	19	5.3%	16	6.3%	26	7.6%	58	5.5%	76	7.8%
LARCENY TOTAL	352	17.3%	365	19.9%	321	14.6%	1046	17.6%	956	15.5%
FROM AUTO	36	3.5%	32	3.5%	29	2.6%	114	3.7%	126	4.0%
BICYCLE	0	0.0%	1	14.3%	2	20.0%	3	10.0%	6	20.7%
SHOPLIFTING	158	69.0%	139	72.0%	154	68.8%	441	68.4%	409	69.3%
OTHERS	158	20.8%	193	27.1%	136	16.1%	488	22.1%	415	17.2%
VEHICLE THEFT TOTAL	50	9.3%	72	15.6%	111	20.7%	210	13.2%	272	18.0%
ARSON TOTAL	7	19.4%	8	21.1%	5	20.0%	28	27.7%	13	19.7%
TOTALS	720	16.9%	797	22.4%	778	18.1%	2347	19.1%	2317	18.9%
VIOLENT PROPERTY	234	41.2%	267	63.7%	224	39.6%	803	51.5%	679	39.9%
	486	13.2%	530	16.9%	554	14.8%	1544	14.4%	1638	15.5%

¹NOTE : Clearances are reported in accordance with Uniform Crime Report guidelines. Since clearances are not counted for UCR until they are entered in the Records Management system, any delays in entry of the documentation may result in some clearances being reported later in succeeding months. Clearances for homicides from years prior to the automated KBCOPS Records and Case Management modules were counted in the December clearances.

**Year-to-Date Violent Index Clearance Rate
Charlotte-Mecklenburg Police Department: 2006**

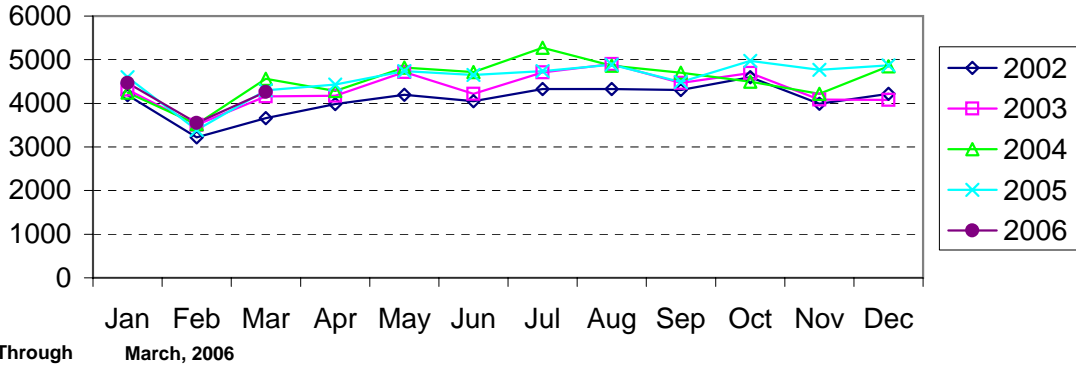


**Year-to-Date Property Index Clearance Rate
Charlotte-Mecklenburg Police Department: 2006**

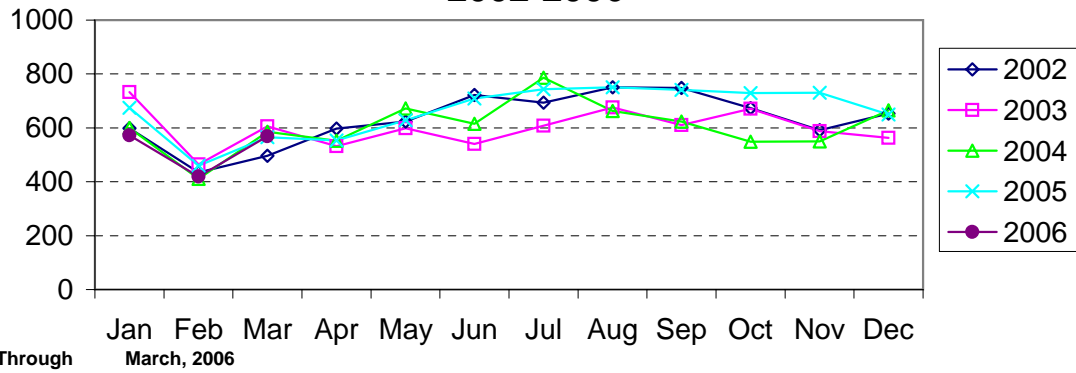


Clearance rates for crime reporting are calculated by dividing the number of crimes cleared during a designated time span by the number of crimes reported in the same period and converting the result to a percentage (multiplying by 100). Since cases from previous reporting periods can be cleared during the designated time span, the rate may be higher than 100%.

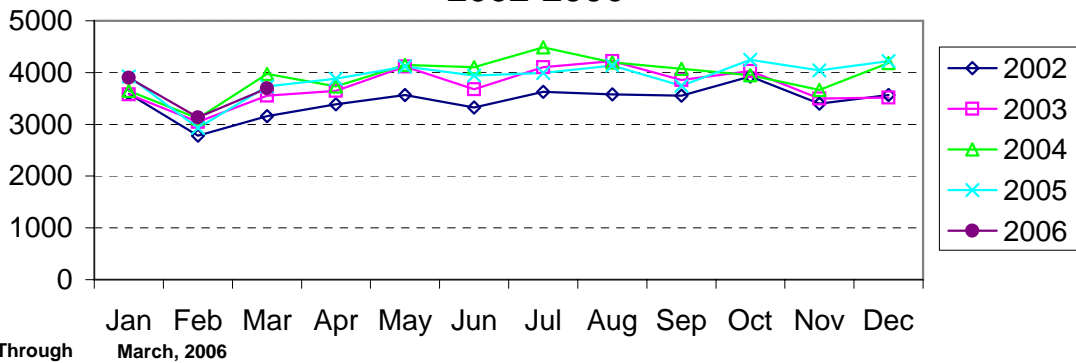
Index Offenses Reported by Month Charlotte-Mecklenburg Police Department: 2002-2006



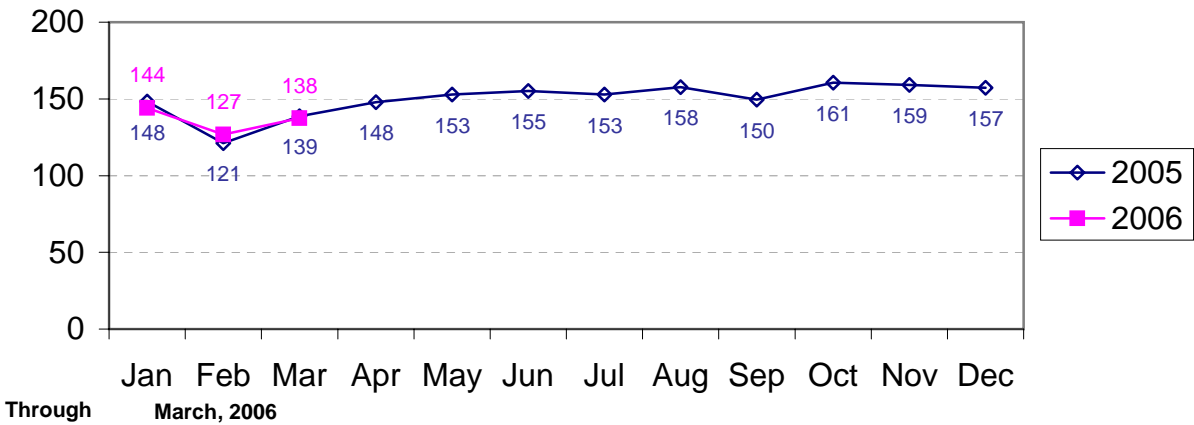
Violent Index Offenses Reported by Month Charlotte-Mecklenburg Police Department: 2002-2006



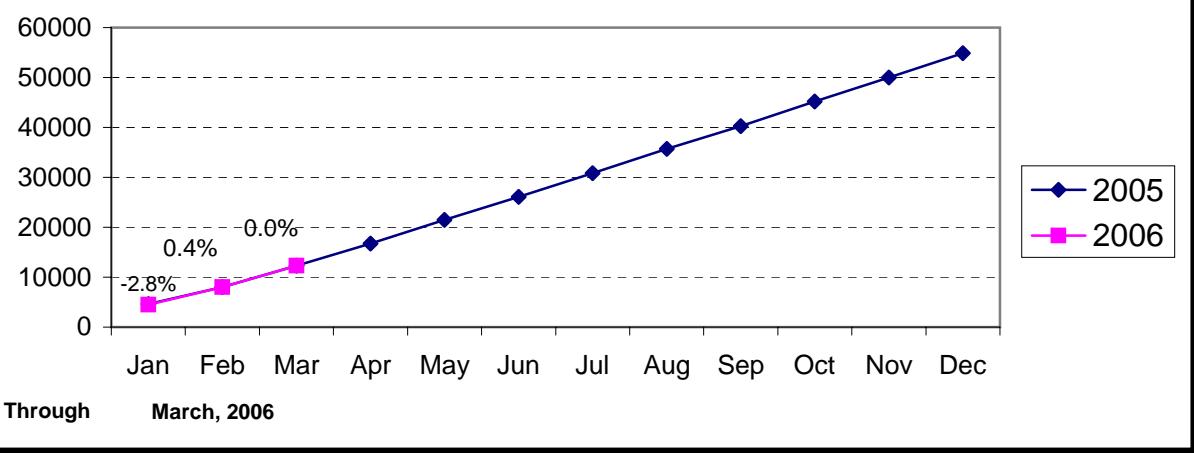
Property Index Offenses Reported by Month Charlotte-Mecklenburg Police Department: 2002-2006

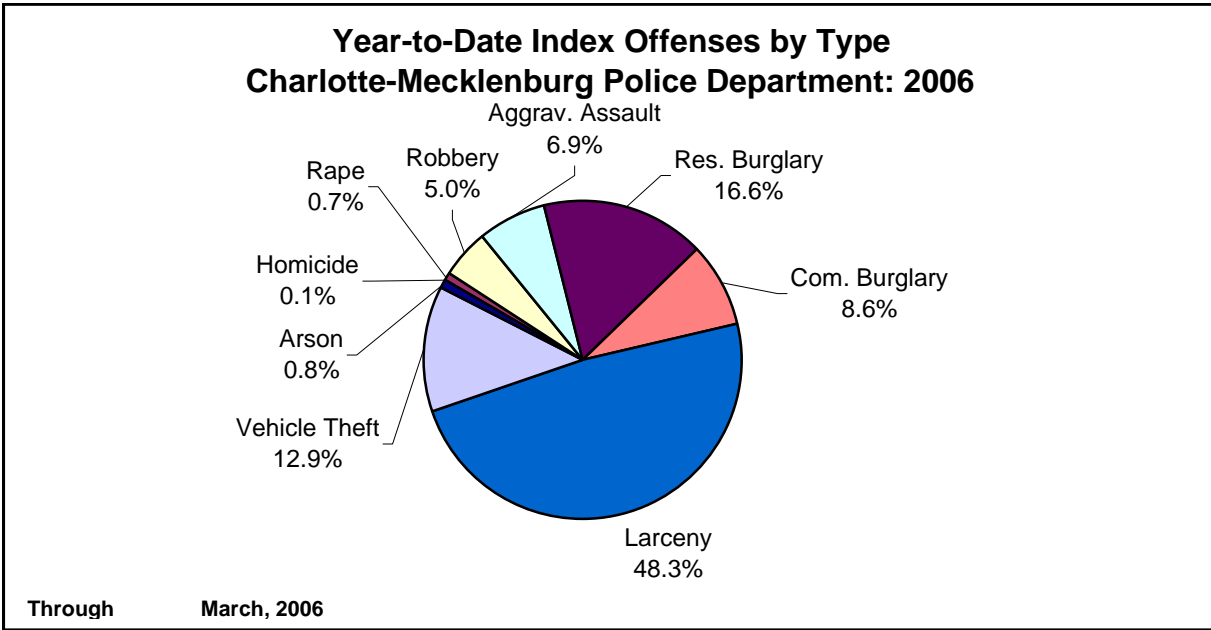
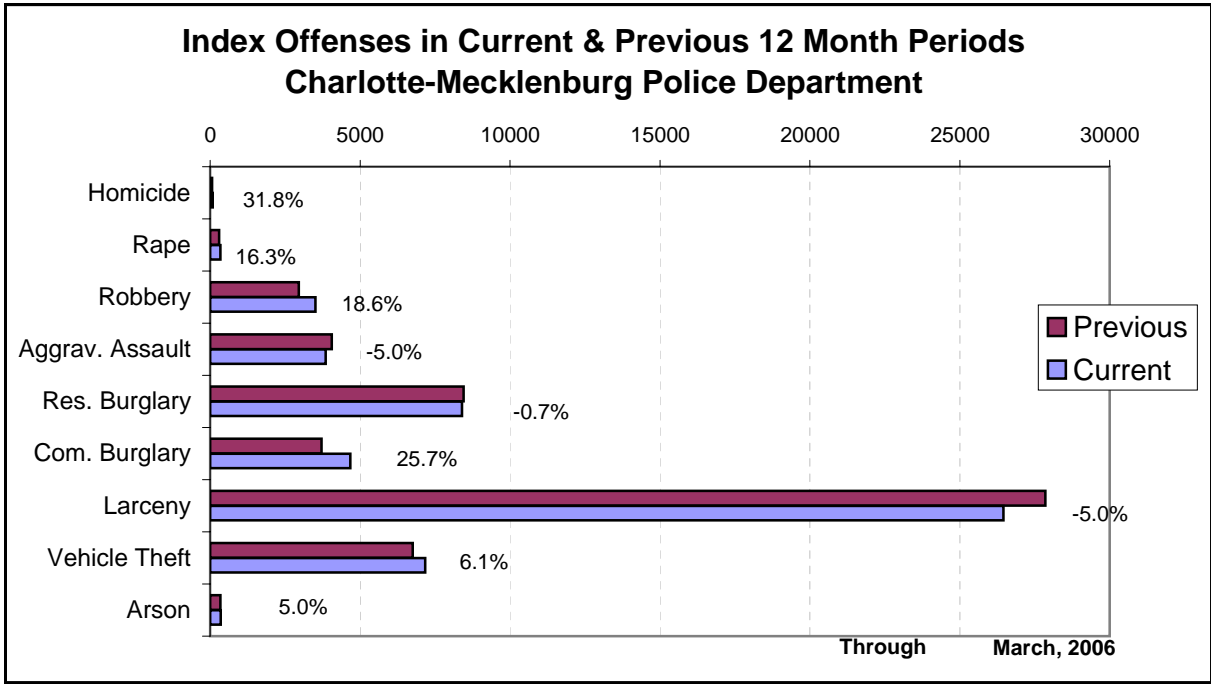


Index Offense Per Day Average by Month Charlotte-Mecklenburg Police Department: 2005-2006

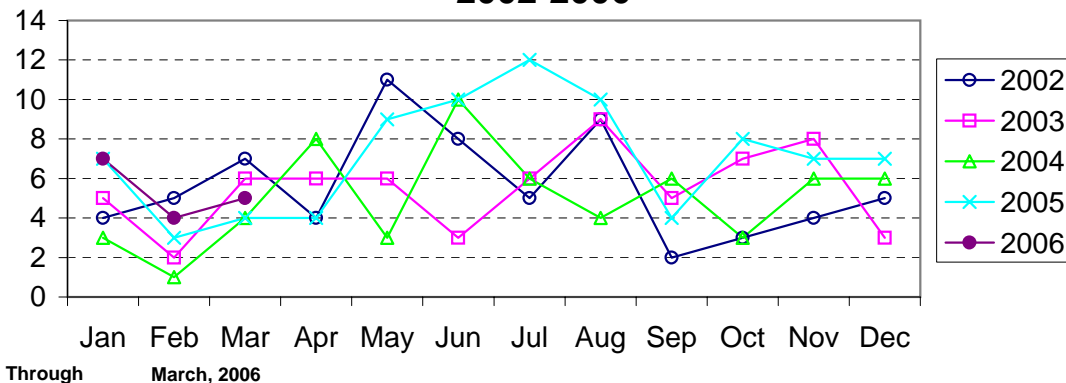


Index Offenses Year-to-Date Cumulative Totals Charlotte-Mecklenburg Police Department: 2005-2006

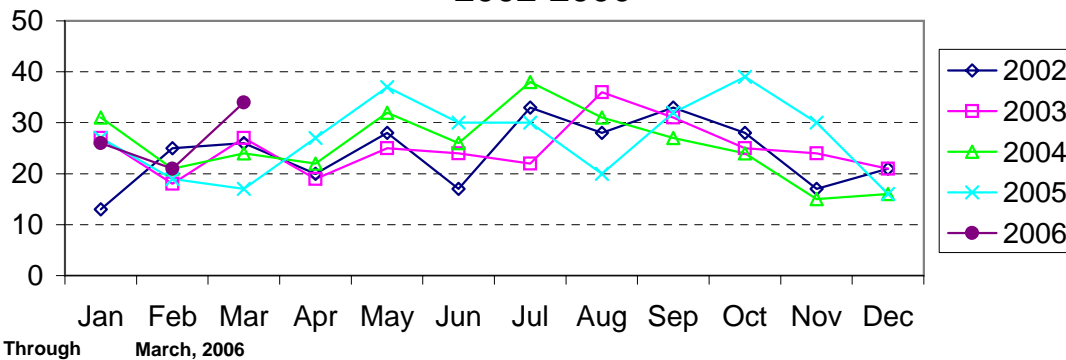




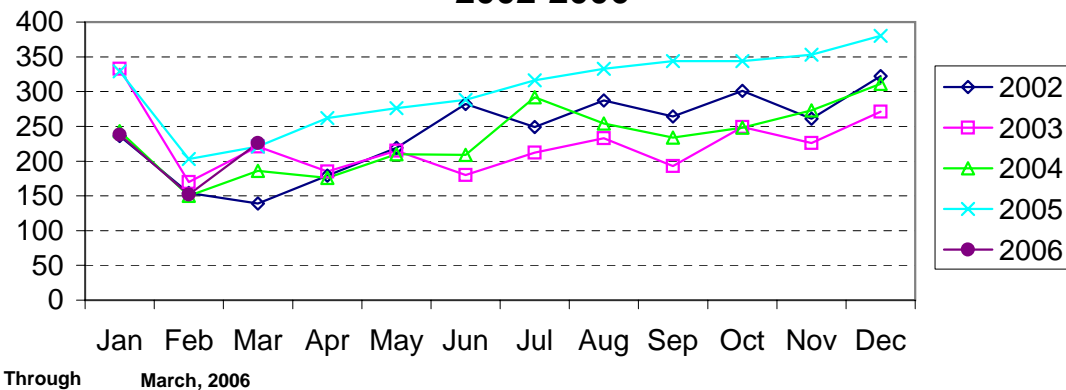
Homicide Reported by Month Charlotte-Mecklenburg Police Department: 2002-2006



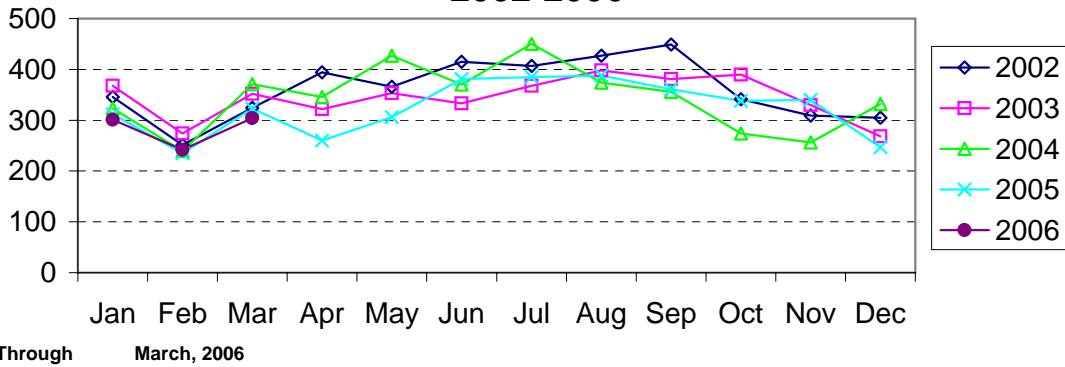
Rape Reported by Month Charlotte-Mecklenburg Police Department: 2002-2006



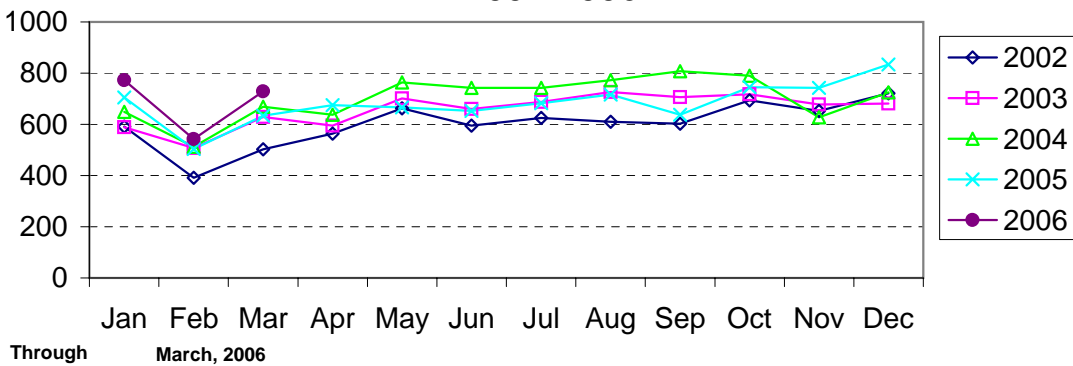
Robbery Reported by Month Charlotte-Mecklenburg Police Department: 2002-2006



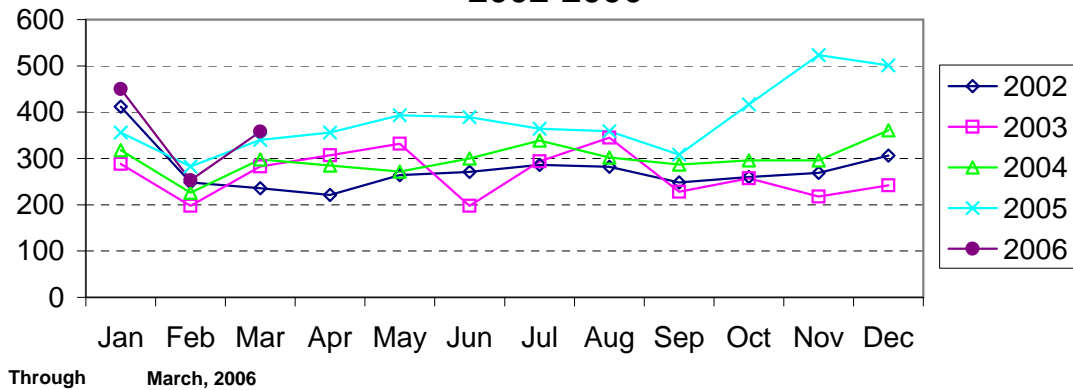
Aggravated Assault Reported by Month Charlotte-Mecklenburg Police Department: 2002-2006



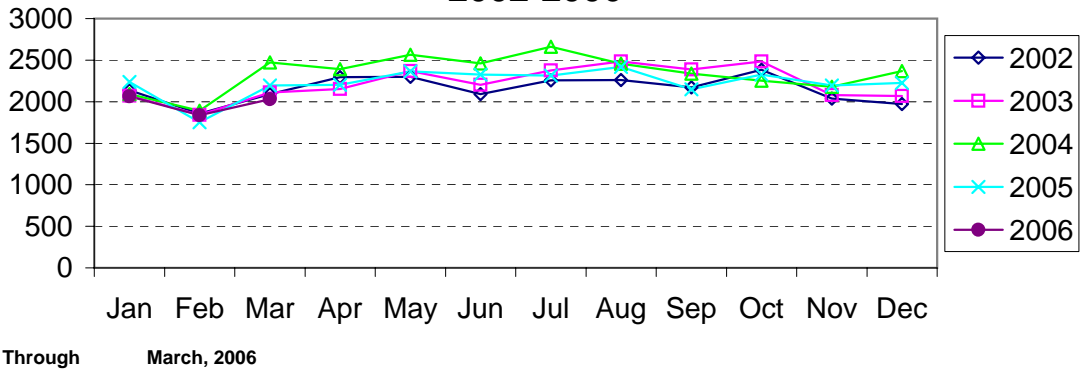
Residential Burglary Reported by Month Charlotte-Mecklenburg Police Department: 2002-2006



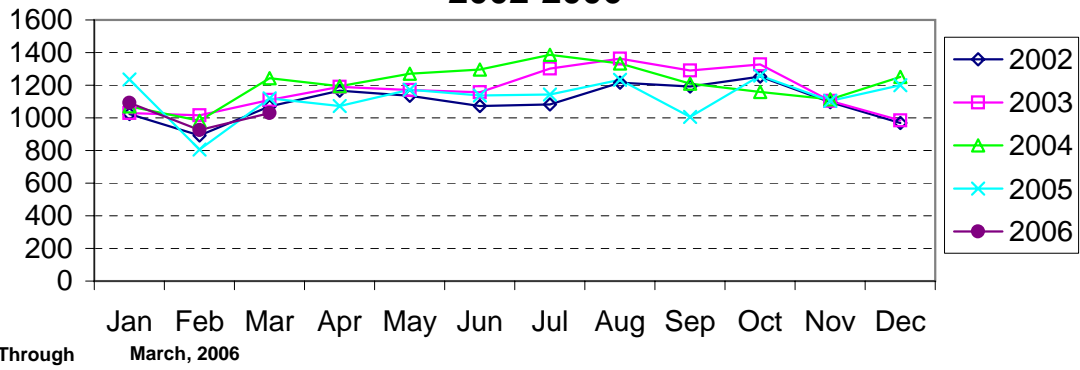
Commercial Burglary Reported by Month Charlotte-Mecklenburg Police Department: 2002-2006



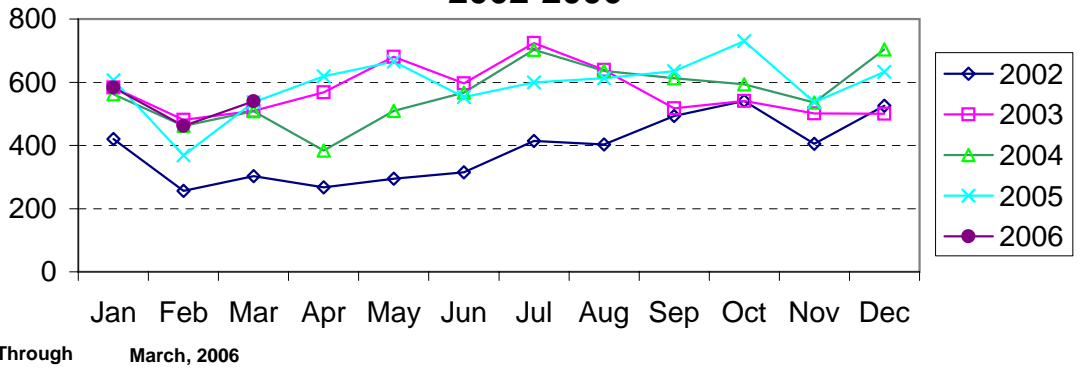
Larceny Reported by Month Charlotte-Mecklenburg Police Department: 2002-2006



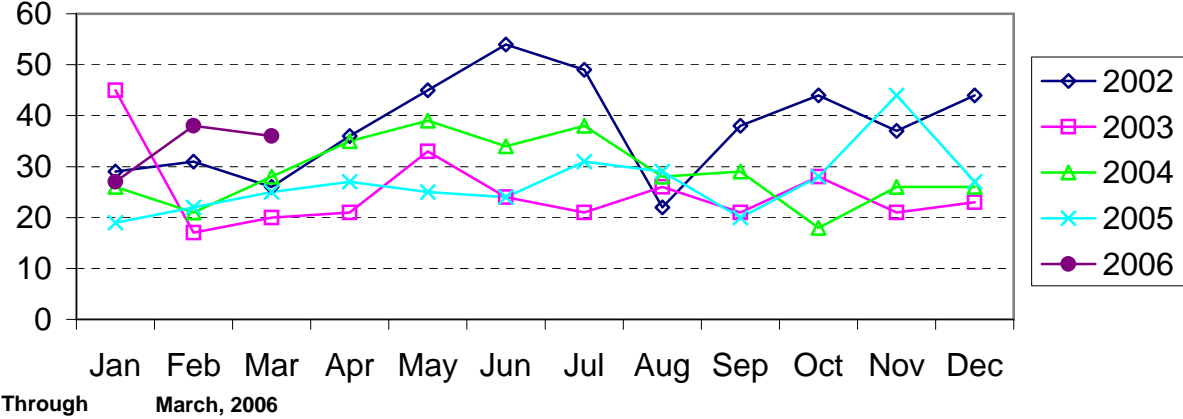
Larceny from Vehicle Reported by Month Charlotte-Mecklenburg Police Department: 2002-2006



Vehicle Theft Reported by Month Charlotte-Mecklenburg Police Department: 2002-2006



Arson Reported by Month Charlotte-Mecklenburg Police Department: 2002-2006



Index Offenses Reported by Division and Service Area of Occurrence									
West Service Area: March, 2005-2006									
INDEX_CATEGORIES	Westover (A2)			Freedom (A3)			West Service Area		
	2005	2006	% Change	2005	2006	% Change	2005	2006	% Change
MURDER & NON-NEGLIGENT MANSLAUGHTER	1	0	-100.0%	2	1	-50.0%	3	1	-66.7%
RAPE	5	8	60.0%	7	6	-14.3%	12	14	16.7%
ACTUAL	5	8	60.0%	7	6	-14.3%	12	14	16.7%
ATTEMPTED	0	0	NA	0	0	NA	0	0	NA
ROBBERY	75	54	-28.0%	95	60	-36.8%	170	114	-32.9%
ARMED	59	45	-23.7%	88	52	-40.9%	147	97	-34.0%
STRONG-ARM	16	9	-43.8%	7	8	14.3%	23	17	-26.1%
AGGRAVATED ASSAULT	91	119	30.8%	126	108	-14.3%	217	227	4.6%
BURGLARY	220	249	13.2%	375	404	7.7%	595	653	9.7%
RESIDENTIAL	108	167	54.6%	216	252	16.7%	324	419	29.3%
COMMERCIAL	112	82	-26.8%	159	152	-4.4%	271	234	-13.7%
LARCENY	400	390	-2.5%	559	628	12.3%	959	1018	6.2%
FROM AUTO	192	193	0.5%	244	295	20.9%	436	488	11.9%
BICYCLE	0	2	NA	3	0	-100.0%	3	2	-33.3%
SHOPLIFTING	24	48	100.0%	56	72	28.6%	80	120	50.0%
OTHERS	184	147	-20.1%	256	261	2.0%	440	408	-7.3%
VEHICLE THEFT	94	138	46.8%	148	161	8.8%	242	299	23.6%
ARSON	2	6	200.0%	4	11	175.0%	6	17	183.3%
TOTALS	888	964	8.6%	1316	1379	4.8%	2204	2343	6.3%
VIOLENT	172	181	5.2%	230	175	-23.9%	402	356	-11.4%
PROPERTY	716	783	9.4%	1086	1204	10.9%	1802	1987	10.3%

Index Offenses Reported by Division and Service Area of Occurrence									
Southeast Service Area: March, 2005-2006									
INDEX_CATEGORIES	Providence (B1)			Independence (B3)			Southeast Service Area		
	2005	2006	% Change	2005	2006	% Change	2005	2006	% Change
MURDER & NON-NEGLIGENT MANSLAUGHTER	1	2	100.0%	0	0	NA	1	2	100.0%
RAPE	1	7	600.0%	9	6	-33.3%	10	13	30.0%
ACTUAL	1	6	500.0%	9	5	-44.4%	10	11	10.0%
ATTEMPTED	0	1	NA	0	1	NA	0	2	NA
ROBBERY	27	22	-18.5%	57	57	0.0%	84	79	-6.0%
ARMED	23	14	-39.1%	44	49	11.4%	67	63	-6.0%
STRONG-ARM	4	8	100.0%	13	8	-38.5%	17	16	-5.9%
AGGRAVATED ASSAULT	36	32	-11.1%	78	52	-33.3%	114	84	-26.3%
BURGLARY	196	188	-4.1%	262	266	1.5%	458	454	-0.9%
RESIDENTIAL	115	103	-10.4%	214	205	-4.2%	329	308	-6.4%
COMMERCIAL	81	85	4.9%	48	61	27.1%	129	146	13.2%
LARCENY	443	438	-1.1%	546	488	-10.6%	989	926	-6.4%
FROM AUTO	185	206	11.4%	307	230	-25.1%	492	436	-11.4%
BICYCLE	4	2	-50.0%	2	9	350.0%	6	11	83.3%
SHOPLIFTING	52	83	59.6%	54	66	22.2%	106	149	40.6%
OTHERS	202	147	-27.2%	183	183	0.0%	385	330	-14.3%
VEHICLE THEFT	70	74	5.7%	186	167	-10.2%	256	241	-5.9%
ARSON	2	3	50.0%	11	7	-36.4%	13	10	-23.1%
TOTALS	776	766	-1.3%	1149	1043	-9.2%	1925	1809	-6.0%
VIOLENT	65	63	-3.1%	144	115	-20.1%	209	178	-14.8%
PROPERTY	711	703	-1.1%	1005	928	-7.7%	1716	1631	-5.0%

The data in the district breakdowns does not include a small number of offenses in which the offense location (or reporting location if offense location was unknown) was entered without one of the 12 valid division assignments. Districts are not equal in geographic size, demographics, zoning/development, and other factors that influence the rate of crimes committed in an area. Therefore, the comparison of raw offense totals across districts is **not** advisable.

Index Offenses Reported by Division and Service Area of Occurrence									
Northeast Service Area: March, 2005-2006									
INDEX_CATEGORIES	North (C1)			Hickory Grove (C3)			Northeast Service Area		
	2005	2006	% Change	2005	2006	% Change	2005	2006	% Change
MURDER & NON-NEGLIGENT MANSLAUGHTER	2	1	-50.0%	3	1	-66.7%	5	2	-60.0%
RAPE	9	14	55.6%	4	9	125.0%	13	23	76.9%
ACTUAL	7	14	100.0%	3	8	166.7%	10	22	120.0%
ATTEMPTED	2	0	-100.0%	1	1	0.0%	3	1	-66.7%
ROBBERY	47	80	70.2%	64	62	-3.1%	111	142	27.9%
ARMED	40	72	80.0%	50	51	2.0%	90	123	36.7%
STRONG-ARM	7	8	14.3%	14	11	-21.4%	21	19	-9.5%
AGGRAVATED ASSAULT	77	76	-1.3%	88	90	2.3%	165	166	0.6%
BURGLARY	412	520	26.2%	300	392	30.7%	712	912	28.1%
RESIDENTIAL	298	311	4.4%	216	290	34.3%	514	601	16.9%
COMMERCIAL*	114	209	83.3%	84	102	21.4%	198	311	57.1%
LARCENY	963	1056	9.7%	423	414	-2.1%	1386	1470	6.1%
FROM AUTO	527	629	19.4%	219	227	3.7%	746	856	14.7%
BICYCLE	4	5	25.0%	3	4	33.3%	7	9	28.6%
SHOPLIFTING	93	107	15.1%	35	35	0.0%	128	142	10.9%
OTHERS	339	315	-7.1%	166	148	-10.8%	505	463	-8.3%
VEHICLE THEFT	220	217	-1.4%	194	140	-27.8%	414	357	-13.8%
ARSON	12	16	33.3%	8	13	62.5%	20	29	45.0%
TOTALS	1742	1980	13.7%	1084	1121	3.4%	2826	3101	9.7%
VIOLENT	135	171	26.7%	159	162	1.9%	294	333	13.3%
PROPERTY	1607	1809	12.6%	925	959	3.7%	2532	2768	9.3%

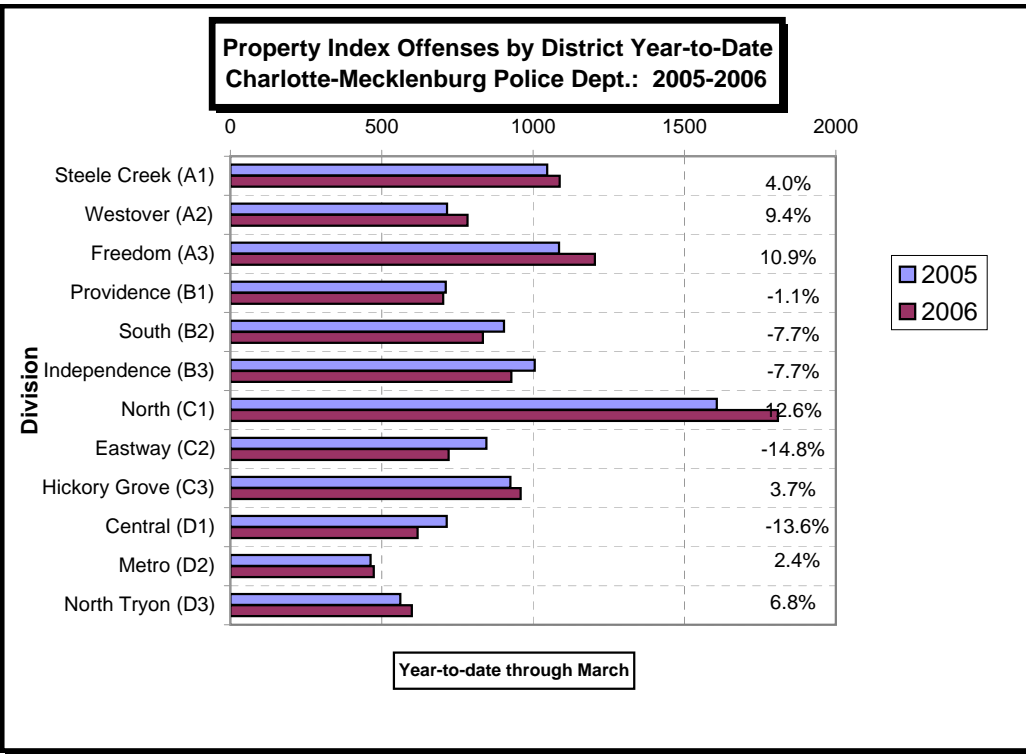
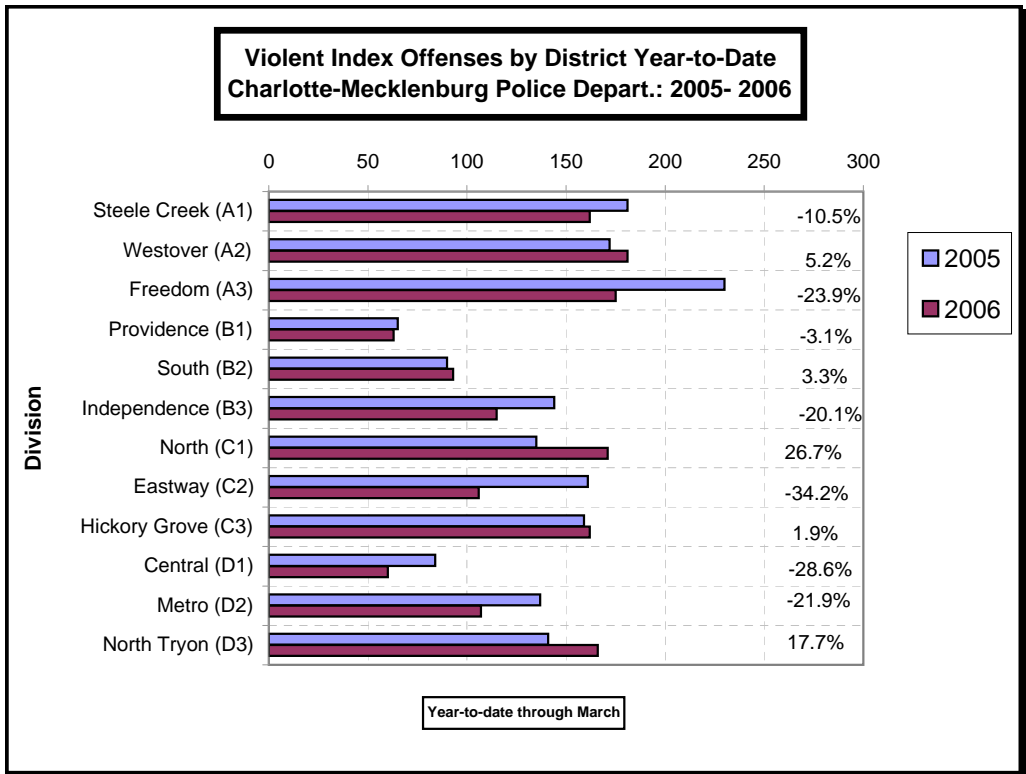
Index Offenses Reported by Division and Service Area of Occurrence									
Central Service Area: March, 2005-2006									
INDEX_CATEGORIES	Central (D1)			Metro (D2)			Central Service Area		
	2005	2006	% Change	2005	2006	% Change	2005	2006	% Change
MURDER & NON-NEGLIGENT MANSLAUGHTER	0	1	NA	3	0	-100.0%	3	1	-66.7%
RAPE	7	6	-14.3%	2	4	100.0%	9	10	11.1%
ACTUAL	6	5	-16.7%	3	4	33.3%	9	9	0.0%
ATTEMPTED	1	1	0.0%	-1	0	-100.0%	0	1	NA
ROBBERY	46	29	-37.0%	49	33	-32.7%	95	62	-34.7%
ARMED	26	21	-19.2%	38	19	-50.0%	64	40	-37.5%
STRONG-ARM	20	8	-60.0%	11	14	27.3%	31	22	-29.0%
AGGRAVATED ASSAULT	31	24	-22.6%	83	70	-15.7%	114	94	-17.5%
BURGLARY	100	85	-15.0%	161	138	-14.3%	261	223	-14.6%
RESIDENTIAL	33	40	21.2%	131	84	-35.9%	164	124	-24.4%
COMMERCIAL	67	45	-32.8%	30	54	80.0%	97	99	2.1%
LARCENY	550	435	-20.9%	219	231	5.5%	769	666	-13.4%
FROM AUTO	309	215	-30.4%	98	110	12.2%	407	325	-20.1%
BICYCLE	3	2	-33.3%	2	1	-50.0%	5	3	-40.0%
SHOPLIFTING	12	20	66.7%	9	7	-22.2%	21	27	28.6%
OTHERS	226	198	-12.4%	110	113	2.7%	336	311	-7.4%
VEHICLE THEFT	65	93	43.1%	79	102	29.1%	144	195	35.4%
ARSON	0	5	NA	4	3	-25.0%	4	8	100.0%
TOTALS	799	678	-15.1%	600	581	-3.2%	1399	1259	-10.0%
VIOLENT	84	60	-28.6%	137	107	-21.9%	221	167	-24.4%
PROPERTY	715	618	-13.6%	463	474	2.4%	1178	1092	-7.3%

The data in the district breakdowns does not include a small number of offenses in which the offense location (or reporting location if offense location was unknown) was entered without one of the 12 valid division assignments. Districts are not equal in geographic size, demographics, zoning/development, and other factors that influence the rate of crimes committed in an area. Therefore, the comparison of raw offense totals across districts is **not** advisable.

Index Offenses Reported by Division and Service Area of Occurrence									
East Service Area: March, 2005-2006									
INDEX_CATEGORIES	Eastway (C2)			North Tryon (D3)			East Service Area		
	2005	2006	% Change	2005	2006	% Change	2005	2006	% Change
MURDER & NON-NEGLIGENT MANSLAUGHTER	2	0	-100.0%	0	4	NA	2	4	100.0%
RAPE	6	6	0.0%	5	2	-60.0%	11	8	-27.3%
ACTUAL	6	5	-16.7%	5	2	-60.0%	11	7	-36.4%
ATTEMPTED	0	1	NA	0	0	NA	0	1	NA
ROBBERY	97	59	-39.2%	70	59	-15.7%	167	118	-29.3%
ARMED	71	51	-28.2%	60	48	-20.0%	131	99	-24.4%
STRONG-ARM	26	8	-69.2%	10	11	10.0%	36	19	-47.2%
AGGRAVATED ASSAULT	56	41	-26.8%	66	101	53.0%	122	142	16.4%
BURGLARY	216	188	-13.0%	174	221	27.0%	390	409	4.9%
RESIDENTIAL	151	147	-2.6%	112	138	23.2%	263	285	8.4%
COMMERCIAL	65	41	-36.9%	62	83	33.9%	127	124	-2.4%
LARCENY	515	407	-21.0%	301	255	-15.3%	816	662	-18.9%
FROM AUTO	183	170	-7.1%	157	121	-22.9%	340	291	-14.4%
BICYCLE	2	0	-100.0%	2	2	0.0%	4	2	-50.0%
SHOPLIFTING	147	89	-39.5%	17	13	-23.5%	164	102	-37.8%
OTHERS	183	148	-19.1%	125	119	-4.8%	308	267	-13.3%
VEHICLE THEFT	108	125	15.7%	83	115	38.6%	191	240	25.7%
ARSON	7	1	-85.7%	3	8	166.7%	10	9	-10.0%
TOTALS	1007	827	-17.9%	702	765	9.0%	1709	1592	-6.8%
VIOLENT PROPERTY	161 846	106 721	-34.2% -14.8%	141 561	166 599	17.7% 6.8%	302 1407	272 1320	-9.9% -6.2%

Index Offenses Reported by Division and Service Area of Occurrence									
South Service Area: March, 2005-2006									
INDEX_CATEGORIES	Steele Creek (A1)			South (B2)			South Service Area		
	2005	2006	% Change	2005	2006	% Change	2005	2006	% Change
MURDER & NON-NEGLIGENT MANSLAUGHTER	0	3	NA	0	3	NA	0	6	NA
RAPE	5	10	100.0%	2	3	50.0%	7	13	85.7%
ACTUAL	5	8	60.0%	2	2	0.0%	7	10	42.9%
ATTEMPTED	0	2	NA	0	1	NA	0	3	NA
ROBBERY	81	73	-9.9%	45	28	-37.8%	126	101	-19.8%
ARMED	67	63	-6.0%	37	25	-32.4%	104	88	-15.4%
STRONG-ARM	14	10	-28.6%	8	3	-62.5%	22	13	-40.9%
AGGRAVATED ASSAULT	95	76	-20.0%	43	59	37.2%	138	135	-2.2%
BURGLARY	206	251	21.8%	199	201	1.0%	405	452	11.6%
RESIDENTIAL	115	164	42.6%	133	141	6.0%	248	305	23.0%
COMMERCIAL	91	87	-4.4%	66	60	-9.1%	157	147	-6.4%
LARCENY	665	665	0.0%	602	525	-12.8%	1267	1190	-6.1%
FROM AUTO	369	364	-1.4%	370	287	-22.4%	739	651	-11.9%
BICYCLE	2	2	0.0%	2	1	-50.0%	4	3	-25.0%
SHOPLIFTING	54	48	-11.1%	37	57	54.1%	91	105	15.4%
OTHERS	240	251	4.6%	193	180	-6.7%	433	431	-0.5%
VEHICLE THEFT	168	158	-6.0%	97	94	-3.1%	265	252	-4.9%
ARSON	7	14	100.0%	6	14	133.3%	13	28	115.4%
TOTALS	1227	1250	1.9%	994	927	-6.7%	2221	2177	-2.0%
VIOLENT PROPERTY	181 1046	162 1088	-10.5% 4.0%	90 904	93 834	3.3% -7.7%	271 1950	255 1922	-5.9% -1.4%

The data in the district breakdowns does not include a small number of offenses in which the offense location (or reporting location if offense location was unknown) was entered without one of the 12 valid division assignments. Districts are not equal in geographic size, demographics, zoning/development, and other factors that influence the rate of crimes committed in an area. Therefore, the comparison of raw offense totals across districts is **not** advisable.



The data in the district breakdowns does not include a small number of offenses in which the offense location (or reporting location if offense location was unknown) was entered without one of the 12 valid division assignments. Districts are not equal in geographic size, demographics, zoning/development, and other factors that influence the rate of crimes committed in an area. Therefore, the comparison of raw offense totals across districts is **not** advisable.

Arrests by Charlotte-Mecklenburg Police Department
Year-To-Date: 2005-2006
(Through March)

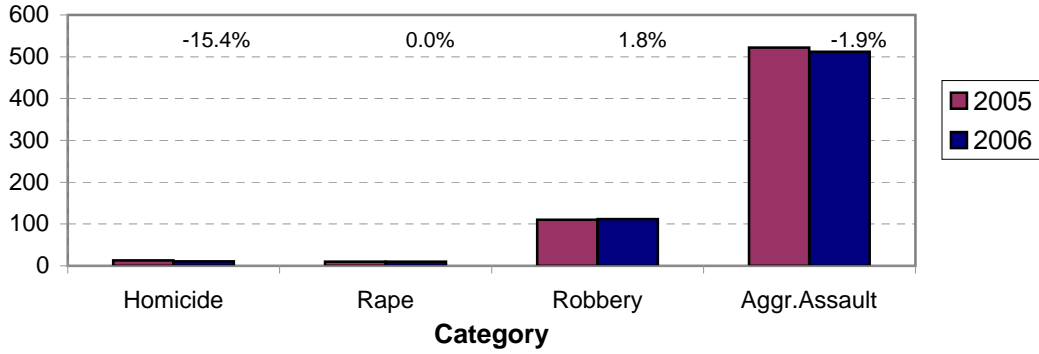
CATEGORY	ADULTS (AGE 18 & OLDER):			JUVENILES (UNDER 18):			TOTAL ARRESTS:		
	2005 Y-T-D	2006 Y-T-D	% CHANGE	2005 Y-T-D	2006 Y-T-D	% CHANGE	2005 Y-T-D	2006 Y-T-D	% CHANGE
Murder/Non-Negligent Manslaughter	12	11	-8.3%	1	0	-100.0%	13	11	-15.4%
Negligent & Vehicular Manslaughter	2	1	-50.0%	0	0	NA	2	1	-50.0%
Rape	10	8	-20.0%	0	2	NA	10	10	0.0%
Robbery	81	76	-6.2%	29	36	24.1%	110	112	1.8%
Aggravated Assault	451	432	-4.2%	71	80	12.7%	522	512	-1.9%
Burglary	169	173	2.4%	60	53	-11.7%	229	226	-1.3%
Larceny	375	339	-9.6%	121	129	6.6%	496	468	-5.6%
Vehicle Theft	26	23	-11.5%	14	24	71.4%	40	47	17.5%
Non-Aggravated Assault	442	470	6.3%	211	183	-13.3%	653	653	0.0%
Arson	1	5	400.0%	4	11	175.0%	5	16	220.0%
Forgery/Counterfiet	42	40	-4.8%	2	0	-100.0%	44	40	-9.1%
Fraud	126	172	36.5%	0	4	NA	126	176	39.7%
Embezzlement	19	20	5.3%	1	2	100.0%	20	22	10.0%
Stolen Property	105	144	37.1%	23	39	69.6%	128	183	43.0%
Vandalism	47	68	44.7%	50	67	34.0%	97	135	39.2%
Weapons	137	196	43.1%	25	18	-28.0%	162	214	32.1%
Prostitution	48	60	25.0%	0	0	NA	48	60	25.0%
Sex Offenses	43	34	-20.9%	1	3	200.0%	44	37	-15.9%
Drugs	679	849	25.0%	68	113	66.2%	747	962	28.8%
Gambling	1	1	0.0%	0	0	NA	1	1	0.0%
Offenses vs. Family	4	1	-75.0%	0	0	NA	4	1	-75.0%
DUI	509	515	1.2%	3	6	100.0%	512	521	1.8%
Liquor	28	50	78.6%	3	0	-100.0%	31	50	61.3%
Disorder.Conduct	122	142	16.4%	105	91	-13.3%	227	233	2.6%
Other Non-Traffic	1945	2312	18.9%	212	238	12.3%	2157	2550	18.2%
VIOLENT INDEX¹	554	527	-4.9%	101	118	16.8%	655	645	-1.5%
PROPERTY INDEX²	571	540	-5.4%	199	217	9.0%	770	757	-1.7%
INDEX SUBTOTAL	1125	1067	-5.2%	300	335	11.7%	1425	1402	-1.6%
PART 2 SUBTOTAL³	4299	5075	18.1%	704	764	8.5%	5003	5839	16.7%
TOTAL	5424	6142	13.2%	1004	1099	9.5%	6428	7241	12.6%

¹Violent Index includes murder and non-negligent manslaughter, rape, robbery, and aggravated assault.

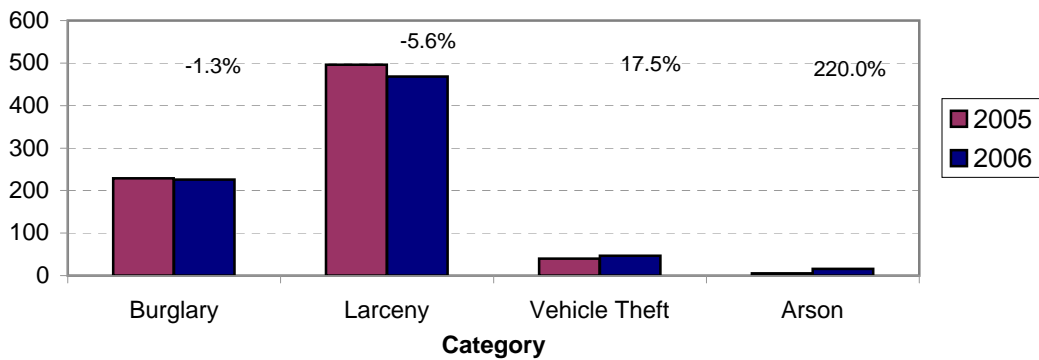
²Property Index includes burglary, larceny, vehicle theft, and arson.

³Part 2 crimes include crime categories not counted in the Index totals.

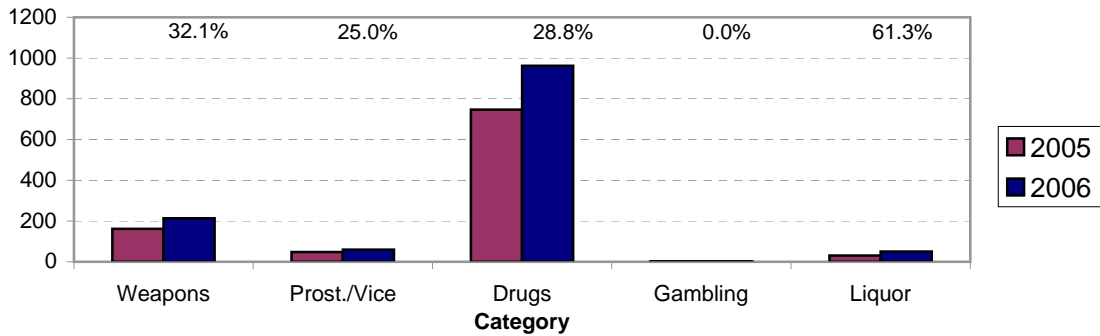
**Violent Index Arrests Year-to-Date
Charlotte-Mecklenburg Police Department: 2005-2006
(Through March)**



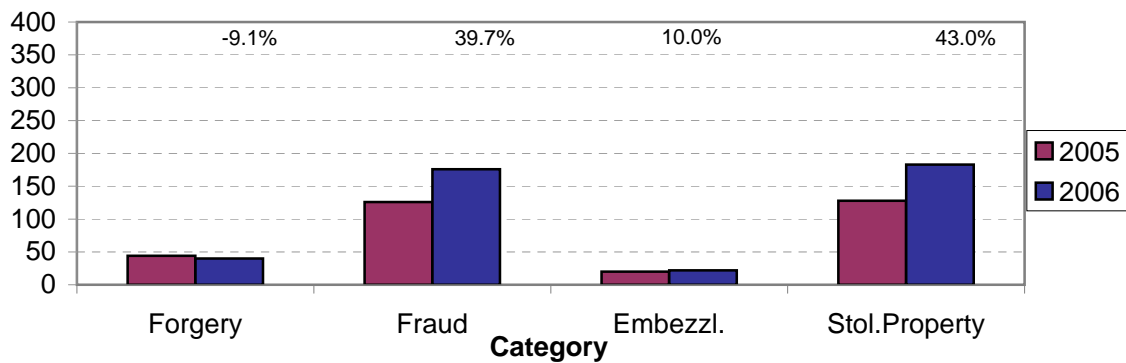
**Property Index Arrests Year-to-Date
Charlotte-Mecklenburg Police Department: 2004-2005
(Through March)**



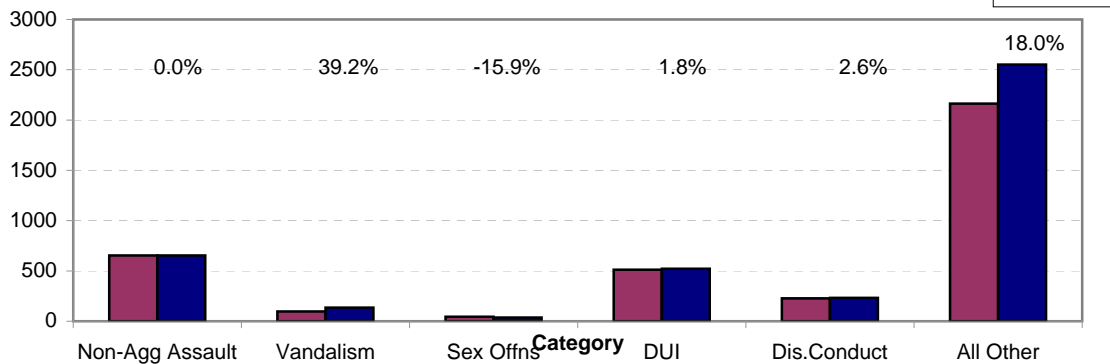
**Arrests for Vice/CCW/Drugs/Etc. Year-to-Date
Charlotte-Mecklenburg Police Department: 2005- 2006
(Through March)**



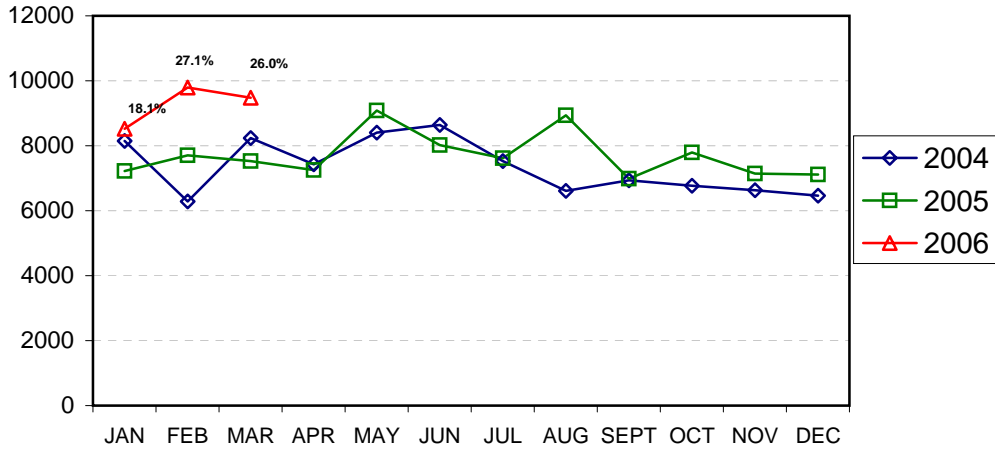
**Arrests for Property/White Collar Crime Year-to-Date
Charlotte-Mecklenburg Police Department: 2005- 2006
(Through March)**



**Arrests for Other Categories Year-to-Date
Charlotte-Mecklenburg Police Department: 2005 - 2006
(Through March)**



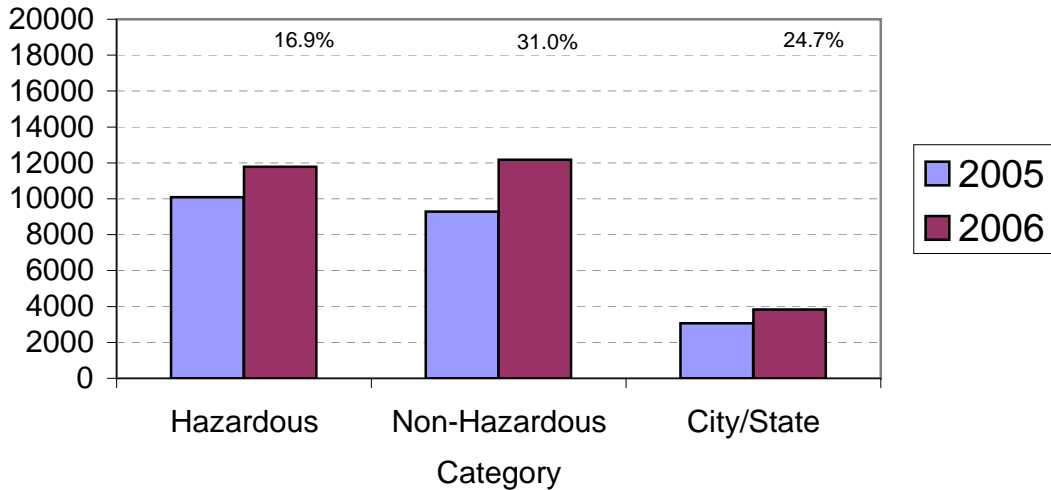
Total Citation Enforcement by Month Charlotte-Mecklenburg Police Dept.: 2004-2006



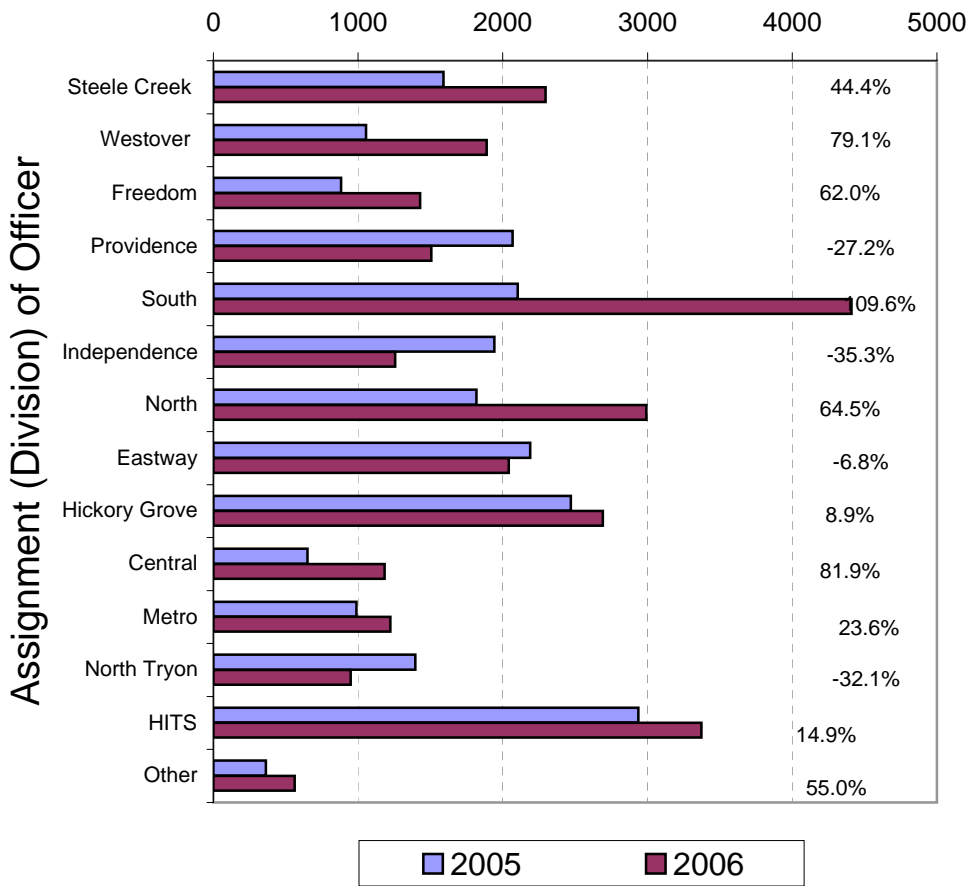
(Through March, 2006)

(Includes Hazardous, Non-Hazardous, and City/State Citations; percentages are current month compared to same month in previous year)

CMPD Citation Enforcement by Category Year-to-Date, 2005 - 2006 (Through March, 2006)



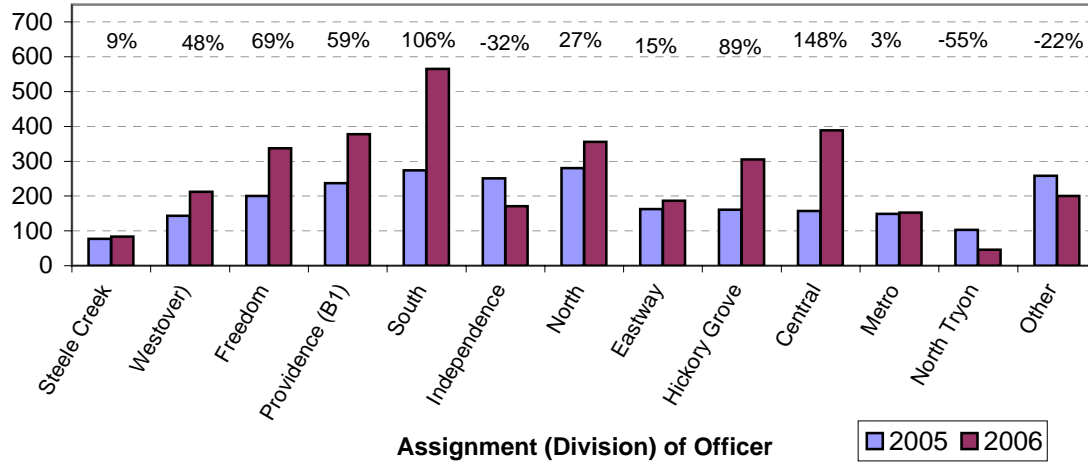
**Citations Issued Year-to-Date by CMPD Divisions
2005 - 2006
(Through March, 2006)**



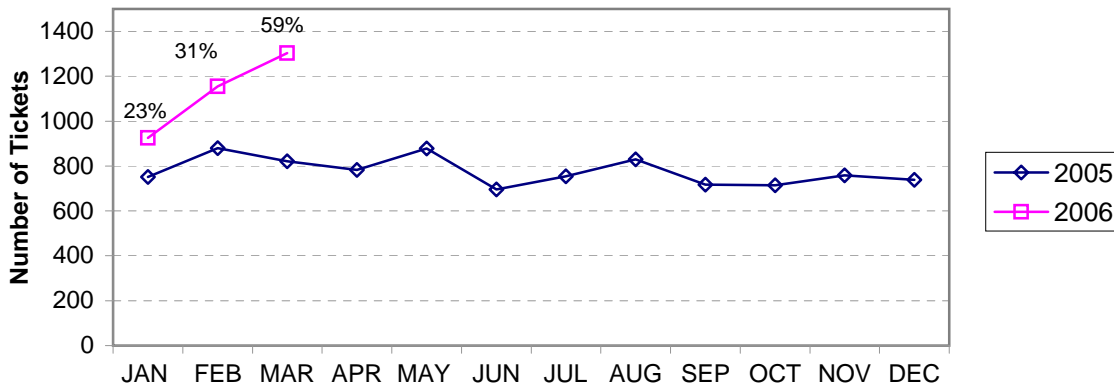
Citations Issued by the Charlotte Mecklenburg Police Officers Year-to-Date (Through March, 2006)			
	2005	2006	% Change
Hazardous	10,088	11,791	16.9%
Non-Hazardous	9,294	12,176	31.0%
Other City/State Statute/Ordinance	3,070	3,829	24.7%
Total	22,452	27,796	23.8%

"Safe Speed" Program: 2005-2006 (Through March, 2006)			
	2005	2006	% Change
Total Citations	9163	6554	-28%
(Citations issued through the "Safe Speed" program are not included in the CMPD citation totals used in the summary chart above or in the other citation charts.)			

**Warning Ticket Violations Issued by Division
Charlotte-Mecklenburg Police Department, 2005- 2006
Through March, 2006**



**Total Warning Ticket Violations Issued by Month
Charlotte-Mecklenburg Police Department: 2005 - 2006**



**Warning Tickets Issued Year-to-Date
Charlotte-Mecklenburg Police Department
Through March, 2006**

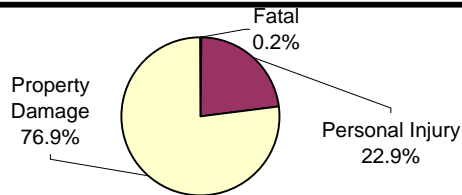
	2005	2006	% Change
Total Warning Tickets	2453	3383	37.9%

**Traffic Collision Reports
Charlotte-Mecklenburg Police Department
Year-to-Date: 2005-2006
(Through March)**

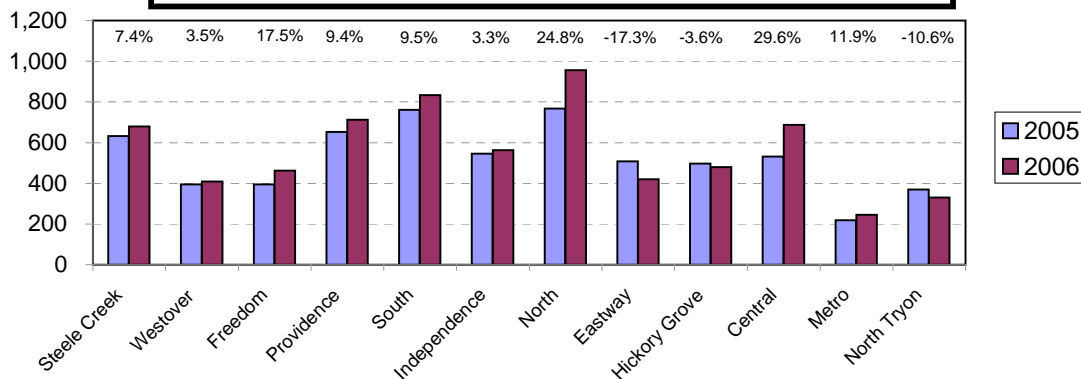
<u>Type</u>	<u>2005</u>	<u>2006</u>	<u>% Change</u>
Fatal Collisions	9	16	77.8%
Vehicle Occupants Killed	8	14	75.0%
Pedestrians Killed	2	3	50.0%
Personal Injury Collisions	1513	1561	3.2%
Property Damage Collisions	4779	5241	9.7%
Total Collisions	6301	6818	8.2%

* The number of fatal collisions and the number of persons killed (fatalities) in those incidents is taken from the HITS file. Their records are updated for deaths that occur after the initial report is filed. Figures for 2005 may be adjusted after publication of 2005 Annual Report.

**Traffic Collisions Reported by Type
Charlotte-Mecklenburg Police Department:
2006 Year-to-Date
(Through March)**



**Traffic Collisions Reported by Charlotte-Mecklenburg Police Dept.
Year-to-Date By Location (Division) : 2005 -2006
(Through March)**



**CITIZEN-INITIATED CALLS FOR SERVICE¹ BY TYPE
CHARLOTTE-MECKLENBURG POLICE DEPARTMENT**

<u>Type of Call²</u>	<u>2005 Year-to-Date Through March</u>	<u>2006 Year-to-Date Through March</u>	<u>Year-to-Date % Change</u>
ABC RELATED	426	462	8.5%
ACCIDENT	8401	8590	2.2%
ALARM	7635	8031	5.2%
ANIMAL CONTROL	63	47	-25.4%
ASSAULT	1010	1015	0.5%
ASSAULT WITH DEADLY WEAPON	353	370	4.8%
ASSIST OTHER AGENCY	1902	1996	4.9%
BOMB THREAT	20	30	50.0%
BREAK/ENTER	4323	4891	13.1%
COMMUNICATING THREATS	826	800	-3.1%
COUNTY SECURITY ³	1	3	200.0%
CRIMINAL INTELLIGENCE	2	6	200.0%
DAMAGE TO PROPERTY	1995	1950	-2.3%
DEATH	75	81	8.0%
DISTURBANCE	5632	5277	-6.3%
DOMESTIC INCIDENT	8413	8600	2.2%
DRUG RELATED	870	949	9.1%
FIGHT	768	825	7.4%
FIRE	3	1	-66.7%
FIRE CASE	19	24	26.3%
FRAUD/FORGERY	788	897	13.8%
GAMBLING	5	7	40.0%
HARASSMENT	530	418	-21.1%
HIT AND RUN	1690	1786	5.7%
JUVENILE RELATED	719	693	-3.6%
KIDNAPPING	53	53	0.0%
LAKE ENFORCEMENT	7	4	-42.9%
LARCENY	6861	6649	-3.1%
LOITERING	1066	1172	9.9%
MAJOR INCIDENT	6	6	0.0%
MISSING PERSON	1743	1776	1.9%
NOISE COMPLAINT	2923	3106	6.3%
OFFENSE AGAINST FAMILY	0	2	NA
OFFICER CALLED IN	196	147	-25.0%
OVERDOSE	101	87	-13.9%
PORNOGRAPHY	1	4	300.0%
PROPERTY	1364	1647	20.7%
PROSTITUTION	195	225	15.4%
PUBLIC SERVICE	4915	5546	12.8%
QUALITY OF LIFE	297	555	86.9%
ROBBERY	800	728	-9.0%
SEX CRIME	242	293	21.1%
SPECIAL SERVICE REQUEST	0	1	NA
SUICIDE	270	322	19.3%
SUSPICIOUS PERSON	4869	4943	1.5%
TRAFFIC RELATED	2437	2674	9.7%
TRESPASS	915	875	-4.4%
VEHICLE RELATED	8124	8376	3.1%
VIOLENT CRIMES TASK FORCE	1	1	0.0%
WARRANT RELATED	890	755	-15.2%
WEAPON RELATED	1670	1944	16.4%
911 HANG UP / CALLBACK	5756	5347	-7.1%
TOTAL	92171	94987	3.1%

¹These totals exclude duplicate and cancelled calls for service; they include calls handled by the Crime Reporting Unit as well as by division field officers, detectives and related CMPD staff.

²The type of call is entered by Communications based on the 911 call unless updated by an officer assigned to respond.

³In this summary, calls to Animal Control, Mecklenburg County Security, or Davidson Police are not included unless they also involve the dispatching of C-MPD field officers or detectives.

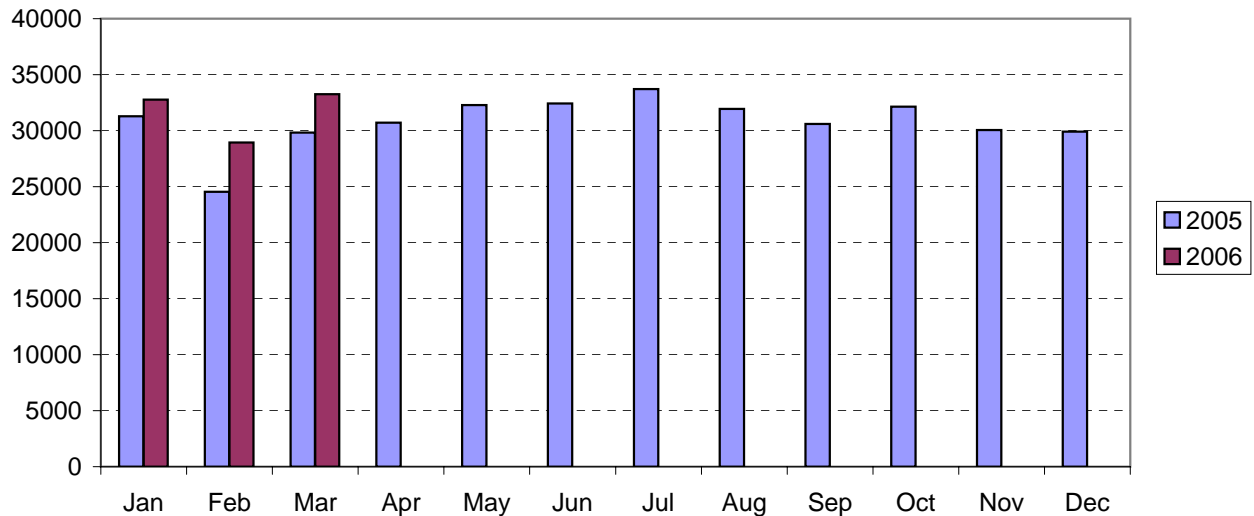
CITIZEN-INITIATED CALLS FOR SERVICE BY ORIGINATING CMPD DIVISION^{1,2}
 (Based on District of Call Origination, Not on Assigned District of Responding Units)

<u>District</u>	<u>2005 Year-to-Date Through March</u>	<u>2006 Year-to-Date Through March</u>	<u>Year-to-Date % Change</u>
Central-01 (D1)	5984	6016	0.5%
Metro-02 (D2)	5063	5253	3.8%
Eastway-06 (C2)	6589	6705	1.8%
North Tryon-07 (D3)	5365	5658	5.5%
North-11 (C1)	10690	12670	18.5%
Hickory Grove-12 (C3)	7957	8892	11.8%
Providence-16 (B1)	6282	6670	6.2%
Independence-17 (B3)	8021	8225	2.5%
Steele Creek-21 (A1)	7675	8419	9.7%
South-22 (B2)	8160	8581	5.2%
Westover-26 (A2)	6148	6709	9.1%
Freedom-27 (A3)	8751	9874	12.8%

¹These totals exclude duplicate and cancelled calls for service; they include calls handled by the Crime Reporting Unit as well as by division field officers, detectives and other CMPD staff.

²Calls where the location could not be assigned to one of the divisions are not included in this chart.

Citizen-Initiated Calls for Service¹ by Month
Charlotte-Mecklenburg Police Department: 2005-2006



¹These totals exclude duplicate and cancelled calls for service; they include calls handled by the Crime Reporting Unit as well as by division field officers, detectives and other CMPD staff.

Uniform Crime Reporting Procedures

The Charlotte-Mecklenburg Police Department reports offense and arrest statistics in accordance with standard Uniform Crime Reporting (UCR) guidelines. UCR policy states that any adjustments to previous months can be made on the current month's report:

...In tabulating crime counts, an agency may find that offense totals for past months require adjustments due to developments in the investigation or other handling of the matter. It may be necessary to adjust totals reported to UCR for the past month or prior months. Needed adjustments can be made on the current month's report and do not affect the reliability of the figures in that such adjustments tend to equalize each other from month to month over a period of time.

- *Uniform Crime Reporting Handbook*, FBI, 1984, p. 42-43

We are required to report crime monthly to the UCR program, and we do therefore make an effort to process monthly changes in a timely manner. However, occasionally due to the review and processing required for reclassifying, unbounding or clearing cases, the current month's totals may reflect the processing of a backlog of these changes from previous months.

Users of the data are cautioned that conclusions about substantial changes in crime trends or in clearance rates based on only a single month's data or trend may reflect some of these adjustments. For this reason, in addition to the monthly and year-to-date trends on Page 1, the monthly report routinely includes a comparison for the previous 12 months (p. 4), as well as graphs that provide seasonal/monthly comparisons over a five-year period (p. 5-8).

UCR Definitions and Terms:

Index Crime: the eight offenses that the national UCR program tracks on a yearly basis to gauge trends in the extent of crime, despite differences among state and local criminal statutes. These offenses were selected on the basis of several factors: seriousness, frequency of occurrence, pervasiveness in all geographic areas, and/or likelihood of being reported to law enforcement.

Violent Index: includes the offenses of murder/non-negligent manslaughter, rape, robbery, and aggravated assault

Property Index: includes the offenses of burglary, larceny, vehicle theft and arson

Murder/non-negligent manslaughter: the willful killing of one human being by another

Rape: the carnal knowledge of a female forcibly and against her will [Note: This offense does not include other sex offenses or statutory (non-forcible) rape.]

Robbery: the taking or attempt to take anything of value from the care, custody, or control of a person or persons by force, threat of force or violence, or by putting the victim in fear.

Aggravated assault: an unlawful attack by one person on another for the purpose of inflicting severe or aggravated bodily injury; includes 1) all assaults in which a weapon of any type is used or is threatened to be used and/or 2) all assaults where serious injury occurs.

Burglary: the unlawful entry or attempted entry of a structure to commit a felony or a theft

Larceny-Theft: the unlawful taking (or attempt), carrying, leading, or riding away of property from the possession or constructive possession of another [Note: Larceny/theft of a motor vehicle is classed separately.]

Vehicle Theft: the theft or attempted theft of a motor vehicle (a self-propelled vehicle that runs on land and not on rails, excluding farm and construction equipment)

Arson: the willful or malicious burning or attempt to burn, with or without intent to defraud, a structure, motor vehicle, personal property of another, etc.

Hierarchy rule: For cases involving multiple-offenses, the incident is classified and counted based on the highest offense on a hierarchy of crimes established by UCR. For example, for an incident involving a rape and a burglary, the incident would be counted in the rape category because rape is higher than burglary on the hierarchy.

Clearance: A case is considered cleared when either at least one arrest is made for the offense or when an offender's identity is established by investigation but the offender will not be arrested for reasons outside law enforcement control (offender dies, victim refuses to prosecute, district attorney declines prosecution, extradition is refused, etc.).

Unfounding: A case is "unfounded" and subtracted from the crime counts when investigation establishes that the incident did not actually occur or that the actions within the incident are not criminal based on current law.

For additional information, please consult the *UCR Handbook* on the FBI website at <http://www.fbi.gov/ucr/ucr.htm>.

This report was compiled by the Research, Planning, and Analysis Division.

We make an effort to present the most accurate information available at the time this report is published. Please notify the Research, Planning, and Analysis office if you have any questions about the data in this report or about an error that was missed in proofing the report.