



**CHARLOTTE-MECKLENBURG POLICE DEPARTMENT
MONTHLY SUMMARY REPORT
JANUARY, 2006**

**Darrel Stephens
Chief of Police**

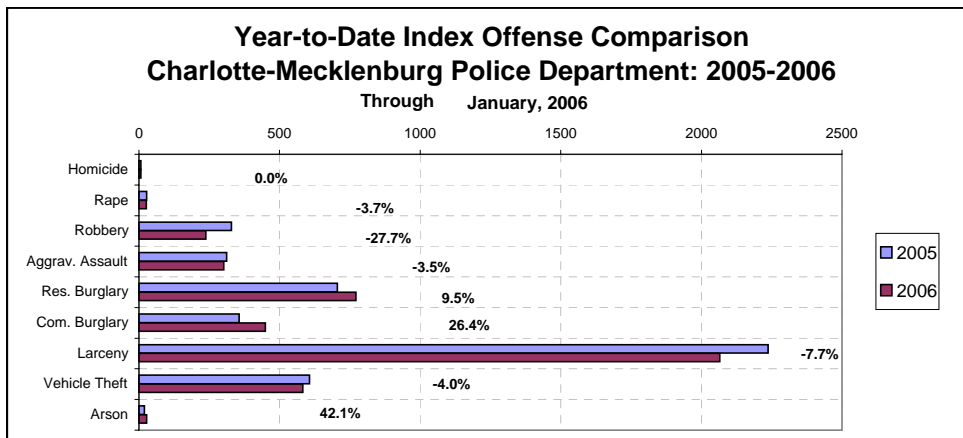
INDEX OFFENSES REPORTED TO CHARLOTTE-MECKLENBURG POLICE DEPARTMENT

January, 2006 INDEX OFFENSES	# THIS MONTH	% OF ALL INDEX	# LAST MONTH	MONTHLY % CHANGE	SAME MONTH LAST YEAR	MONTHLY % CHANGE	THIS YEAR TO DATE	LAST YEAR TO DATE	ANNUAL % CHANGE
HOMICIDE (MURDER & NON- NEGLIGENT MANSLAUGHTER)	7	0.2%	7	0.0%	7	0.0%	7	7	0.0%
RAPE TOTAL	26	0.6%	16	62.5%	27	-3.7%	26	27	-3.7%
ACTUAL	25	0.6%	15	66.7%	26	-3.8%	25	26	-3.8%
ATTEMPT	1	0.0%	1	0.0%	1	0.0%	1	1	0.0%
ROBBERY TOTAL	238	5.3%	380	-37.4%	329	-27.7%	238	329	-27.7%
ARMED	200	4.5%	318	-37.1%	263	-24.0%	200	263	-24.0%
STRONG-ARM	38	0.9%	62	-38.7%	66	-42.4%	38	66	-42.4%
AGGRAVATED ASSAULT TOTAL	301	6.7%	247	21.9%	312	-3.5%	301	312	-3.5%
BURGLARY TOTAL	1222	27.3%	1335	-8.5%	1061	15.2%	1222	1061	15.2%
RESIDENTIAL	772	17.3%	834	-7.4%	705	9.5%	772	705	9.5%
COMMERCIAL	450	10.1%	501	-10.2%	356	26.4%	450	356	26.4%

FORCE	1012	22.6%	1102	-8.2%	857	18.1%	1012	857	18.1%
NO FORCE	114	2.6%	116	-1.7%	126	-9.5%	114	126	-9.5%
ATTEMPT	96	2.1%	117	-17.9%	78	23.1%	96	78	23.1%
LARCENY TOTAL	2065	46.2%	2227	-7.3%	2237	-7.7%	2065	2237	-7.7%
\$200 AND OVER	1041	23.3%	1112	-6.4%	1100	-5.4%	1041	1100	-5.4%
\$50 TO \$200	404	9.0%	466	-13.3%	425	-4.9%	404	425	-4.9%
UNDER \$50	620	13.9%	649	-4.5%	712	-12.9%	620	712	-12.9%

FROM AUTO	1092	24.4%	1200	-9.0%	1236	-11.7%	1092	1236	-11.7%
BICYCLE	9	0.2%	4	125.0%	11	-18.2%	9	11	-18.2%
SHOPLIFTING	223	5.0%	237	-5.9%	185	20.5%	223	185	20.5%
OTHERS	741	16.6%	786	-5.7%	805	-8.0%	741	805	-8.0%
VEHICLE THEFT TOTAL	583	13.0%	633	-7.9%	607	-4.0%	583	607	-4.0%
ARSON TOTAL	27	0.6%	27	0.0%	19	42.1%	27	19	42.1%
TOTALS	4469	100.0%	4872	-8.3%	4599	-2.8%	4469	4599	-2.8%
VIOLENT PROPERTY	572 3897	12.8% 87.2%	650 4222	-12.0% -7.7%	675 3924	-15.3% -0.7%	572 3897	675 3924	-15.3% -0.7%

NOTE: These totals include offenses reported to the Charlotte-Mecklenburg Police Department in accordance with the Uniform Crime Reporting Program. Totals for homicide do not include cases investigated by the police but classed by UCR guidelines as negligent manslaughter or as "justifiable homicide."

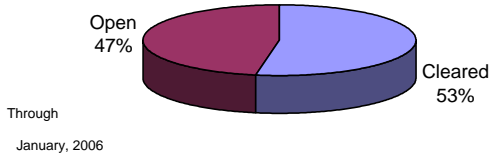


INDEX CLEARANCES REPORTED BY THE CHARLOTTE-MECKLENBURG POLICE DEPARTMENT

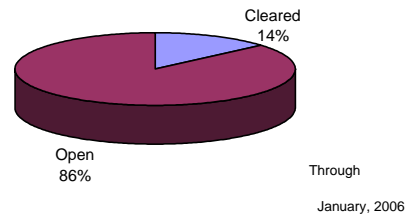
January, 2006 INDEX CLEARANCES	THIS MONTH:		LAST MONTH:		SAME MO. LAST YR:		THIS YEAR TO DATE:		LAST YEAR TO DATE:	
	NO.	%	NO.	%	NO.	%	NO.	%	NO.	%
MURDER & NON-NEGLIGENT MANSLAUGHTER ¹	5	71.4%	17	242.9%	2	28.6%	5	71.4%	2	28.6%
RAPE TOTAL	17	65.4%	16	100.0%	24	88.9%	17	65.4%	24	88.9%
ACTUAL	17	68.0%	15	100.0%	21	80.8%	17	68.0%	21	80.8%
ATTEMPT	0	0.0%	1	100.0%	3	300.0%	0	0.0%	3	300.0%
ROBBERY TOTAL	106	44.5%	57	15.0%	70	21.3%	106	44.5%	70	21.3%
ARMED	79	39.5%	49	15.4%	59	22.4%	79	39.5%	59	22.4%
STRONG-ARM	27	71.1%	8	12.9%	11	16.7%	27	71.1%	11	16.7%
AGGRAVATED ASSAULT TOTAL	174	57.8%	142	57.5%	160	51.3%	174	57.8%	160	51.3%
BURGLARY TOTAL	98	8.0%	123	9.2%	152	14.3%	98	8.0%	152	14.3%
RESIDENTIAL	75	9.7%	68	8.2%	120	17.0%	75	9.7%	120	17.0%
COMMERCIAL	23	5.1%	55	11.0%	32	9.0%	23	5.1%	32	9.0%
LARCENY TOTAL	329	15.9%	357	16.0%	327	14.6%	329	15.9%	327	14.6%
FROM AUTO	46	4.2%	26	2.2%	35	2.8%	46	4.2%	35	2.8%
BICYCLE	2	22.2%	0	0.0%	2	18.2%	2	22.2%	2	18.2%
SHOPLIFTING	144	64.6%	184	77.6%	130	70.3%	144	64.6%	130	70.3%
OTHERS	137	18.5%	147	18.7%	160	19.9%	137	18.5%	160	19.9%
VEHICLE THEFT TOTAL	88	15.1%	72	11.4%	91	15.0%	88	15.1%	91	15.0%
ARSON TOTAL	13	48.1%	16	59.3%	7	36.8%	13	48.1%	7	36.8%
TOTALS	830	18.6%	800	16.4%	833	18.1%	830	18.6%	833	18.1%
VIOLENT PROPERTY	302	52.8%	232	35.7%	256	37.9%	302	52.8%	256	37.9%
	528	13.5%	568	13.5%	577	14.7%	528	13.5%	577	14.7%

¹NOTE : Clearances are reported in accordance with Uniform Crime Report guidelines. Since clearances are not counted for UCR until they are entered in the Records Management system, any delays in entry of the documentation may result in some clearances being reported later in succeeding months. Clearances for homicides from years prior to the automated KBCOPS Records and Case Management modules were counted in the December clearances.

**Year-to-Date Violent Index Clearance Rate
Charlotte-Mecklenburg Police Department: 2006**

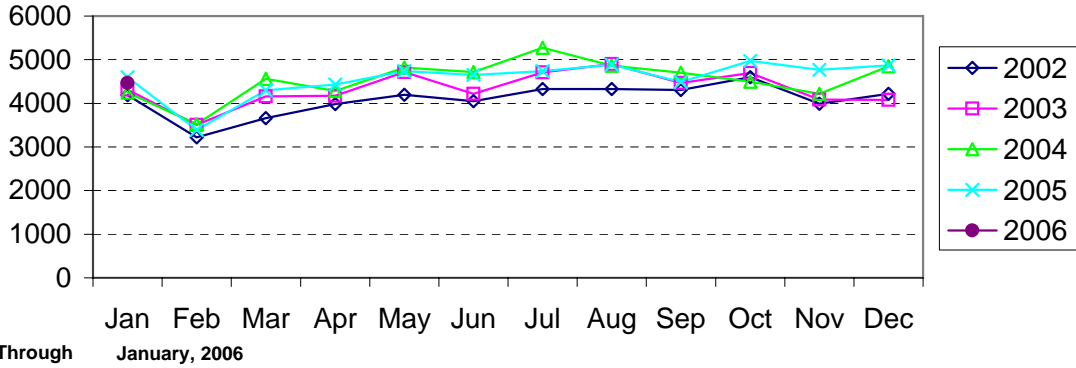


**Year-to-Date Property Index Clearance Rate
Charlotte-Mecklenburg Police Department: 2006**

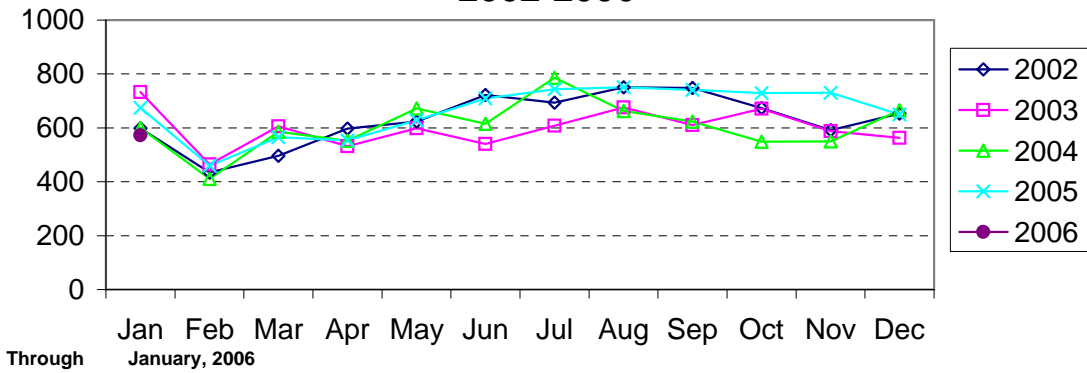


Clearance rates for crime reporting are calculated by dividing the number of crimes cleared during a designated time span by the number of crimes reported in the same period and converting the result to a percentage (multiplying by 100). Since cases from previous reporting periods can be cleared during the designated time span, the rate may be higher than 100%.

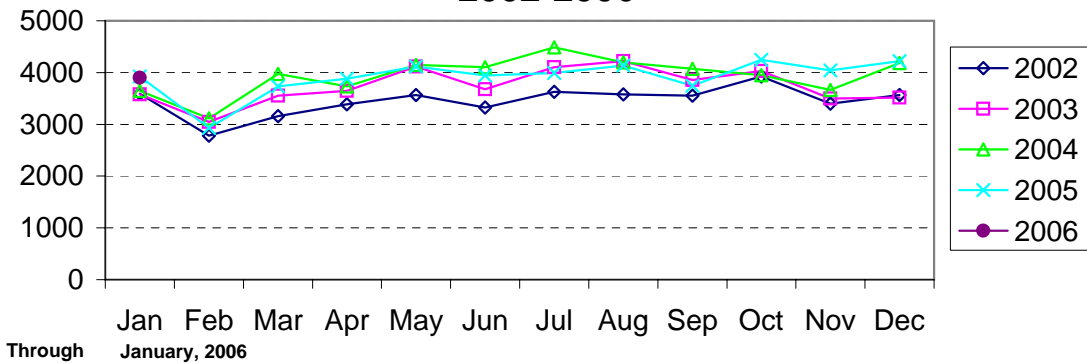
Index Offenses Reported by Month Charlotte-Mecklenburg Police Department: 2002-2006



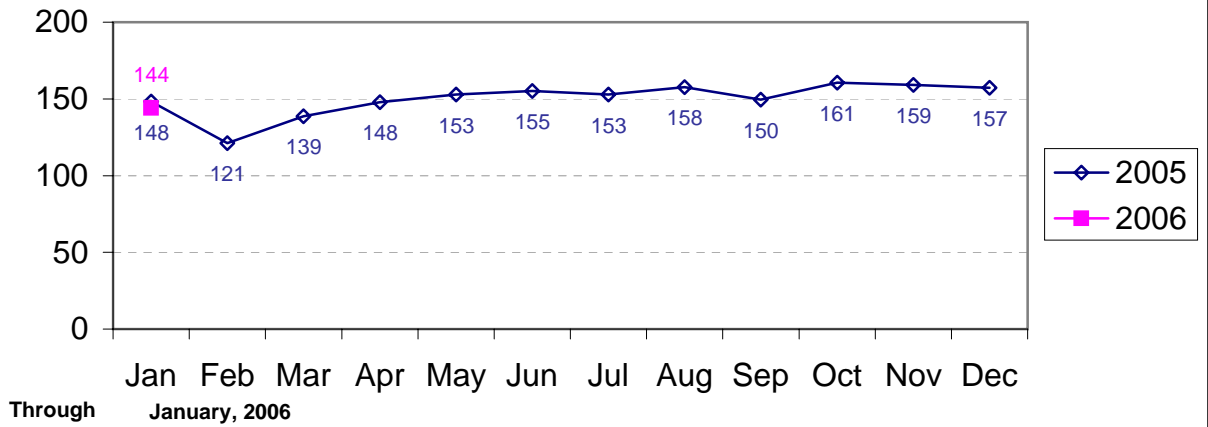
Violent Index Offenses Reported by Month Charlotte-Mecklenburg Police Department: 2002-2006



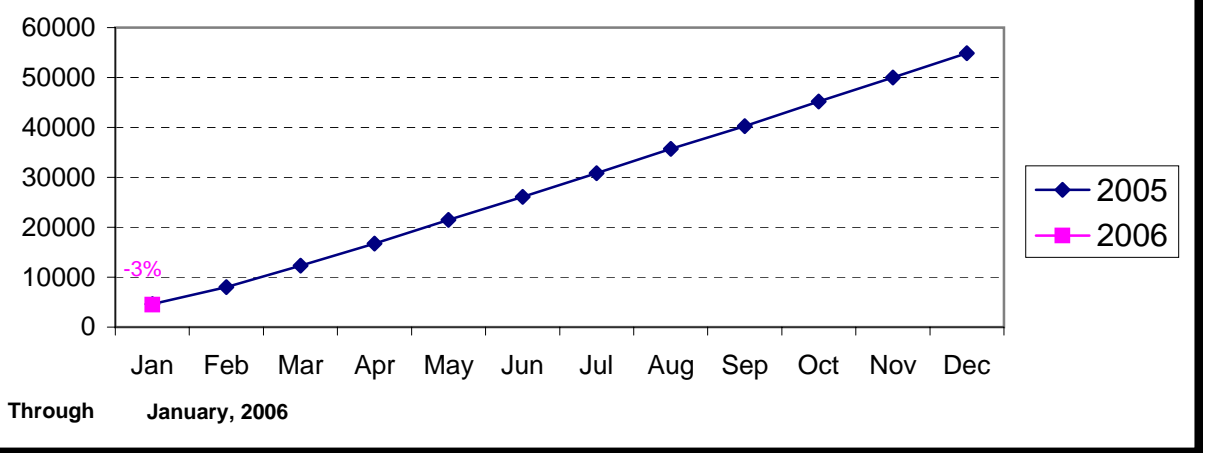
Property Index Offenses Reported by Month Charlotte-Mecklenburg Police Department: 2002-2006



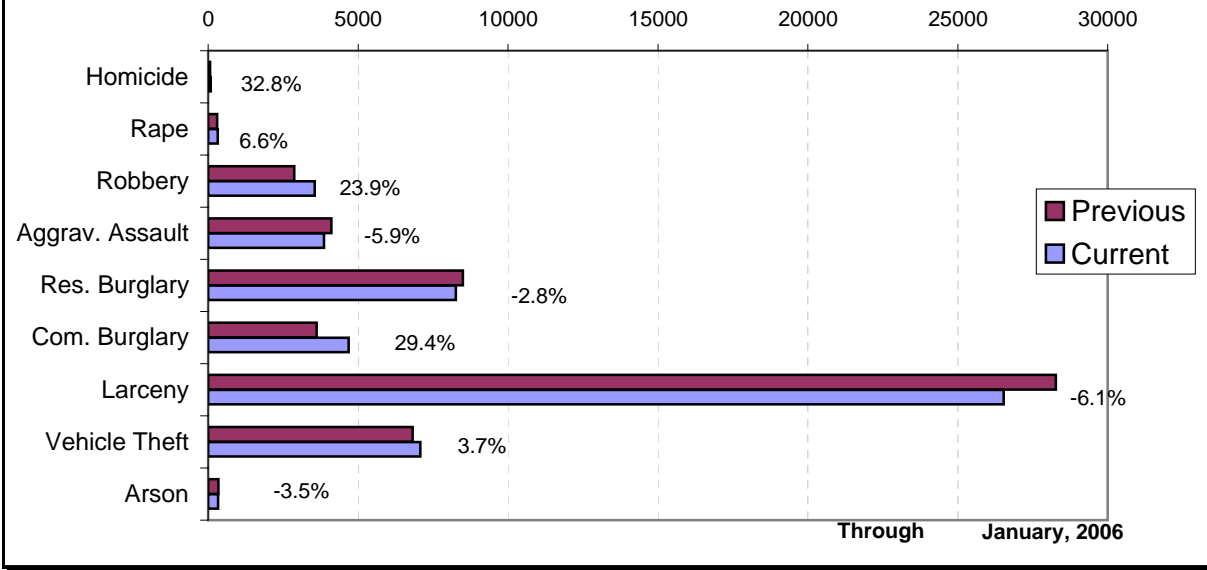
Index Offense Per Day Average by Month Charlotte-Mecklenburg Police Department: 2005-2006



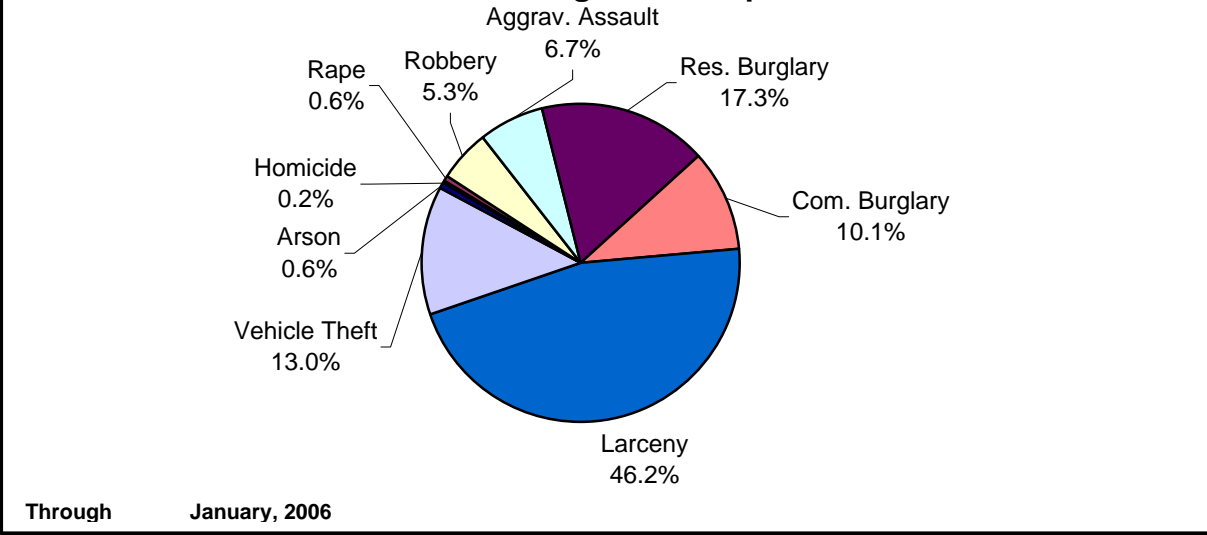
Index Offenses Year-to-Date Cumulative Totals Charlotte-Mecklenburg Police Department: 2005-2006



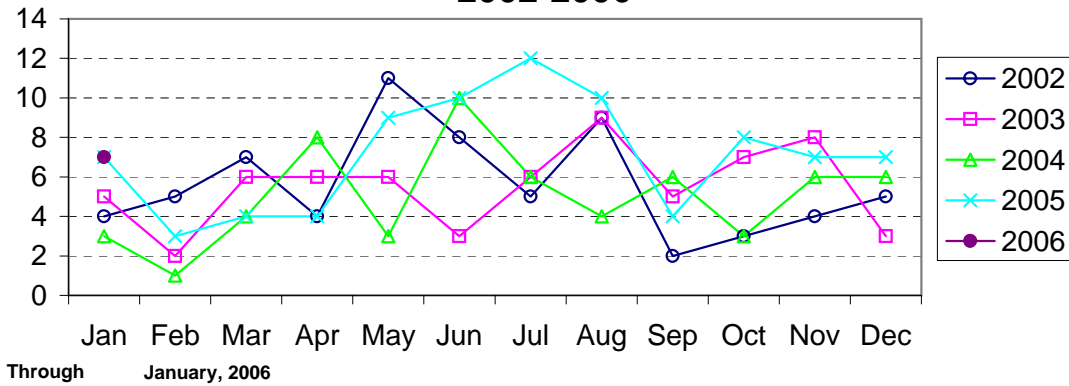
Index Offenses in Current & Previous 12 Month Periods Charlotte-Mecklenburg Police Department



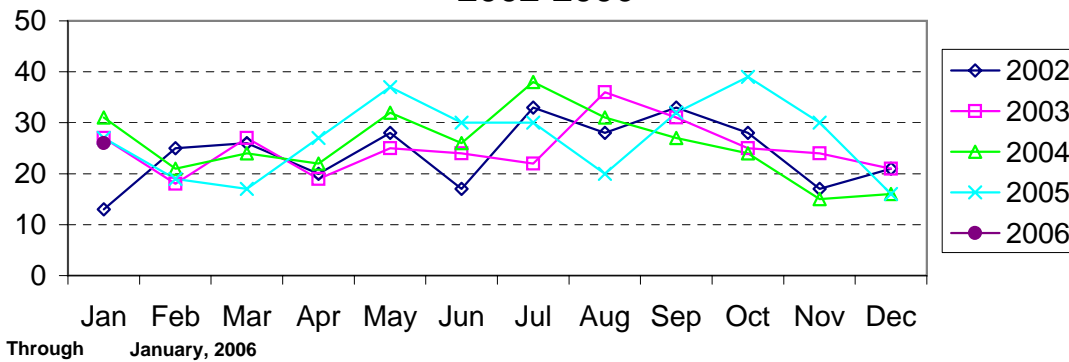
Year-to-Date Index Offenses by Type Charlotte-Mecklenburg Police Department: 2006



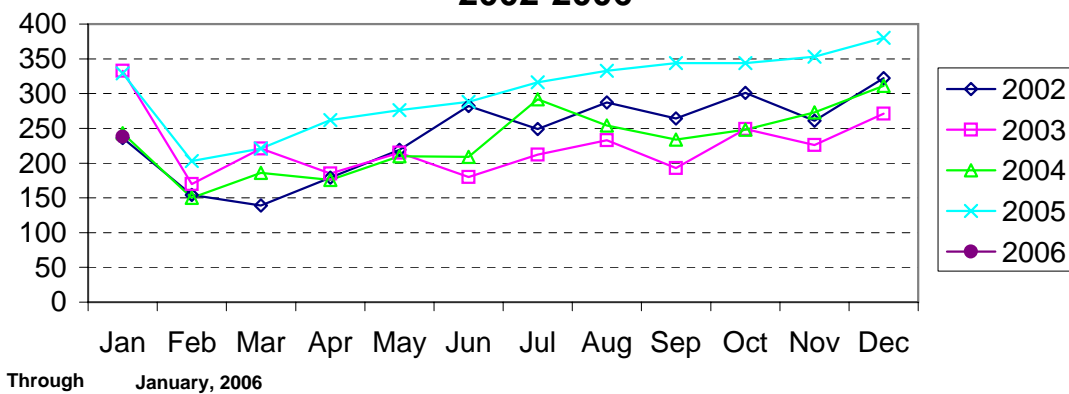
Homicide Reported by Month Charlotte-Mecklenburg Police Department: 2002-2006



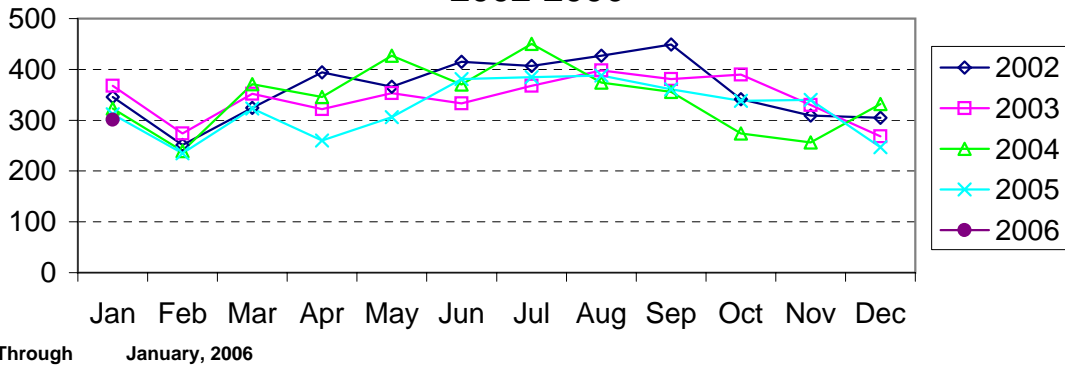
Rape Reported by Month Charlotte-Mecklenburg Police Department: 2002-2006



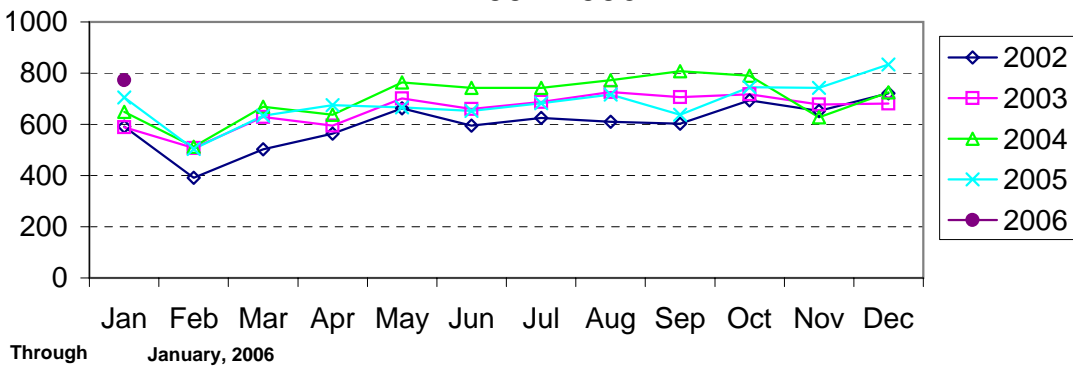
Robbery Reported by Month Charlotte-Mecklenburg Police Department: 2002-2006



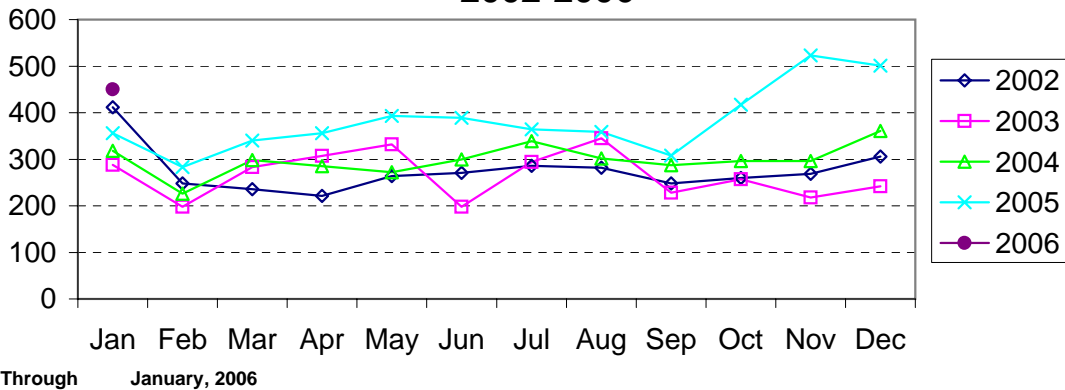
**Aggravated Assault Reported by Month
Charlotte-Mecklenburg Police Department:
2002-2006**



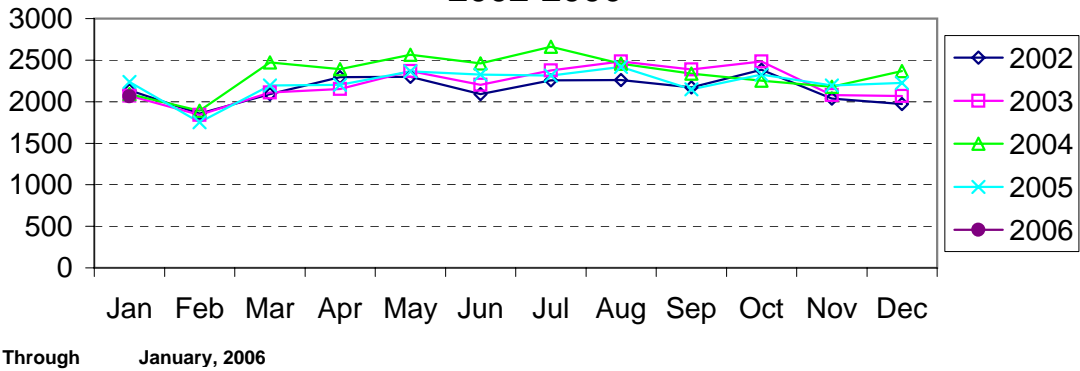
**Residential Burglary Reported by Month
Charlotte-Mecklenburg Police Department:
2002-2006**



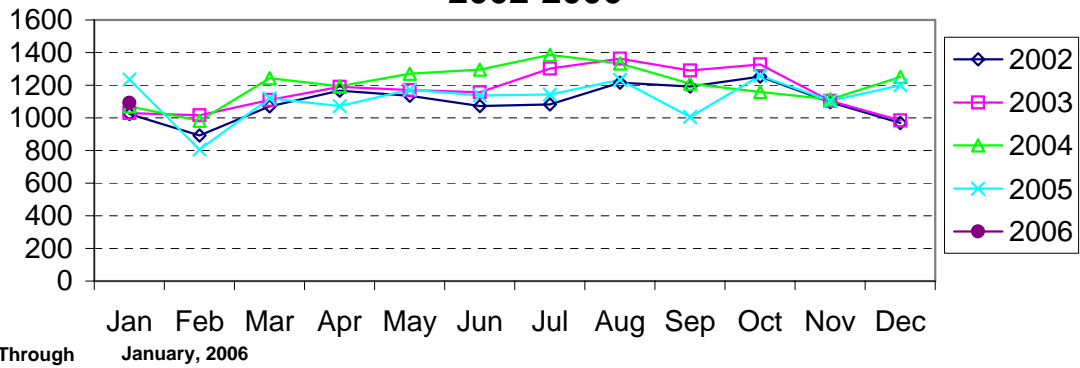
**Commercial Burglary Reported by Month
Charlotte-Mecklenburg Police Department:
2002-2006**



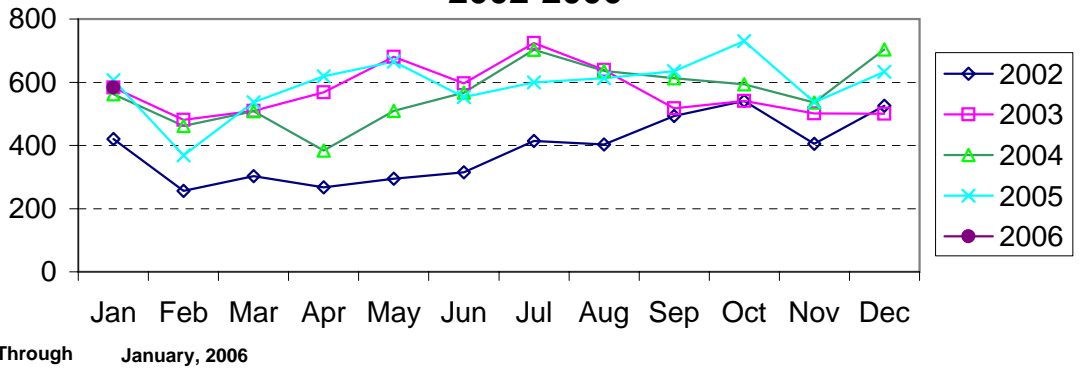
Larceny Reported by Month Charlotte-Mecklenburg Police Department: 2002-2006



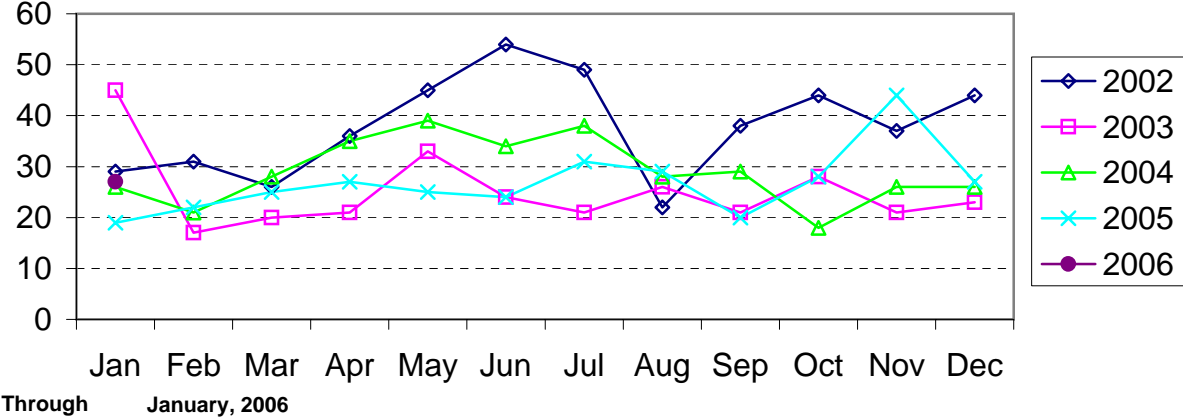
Larceny from Vehicle Reported by Month Charlotte-Mecklenburg Police Department: 2002-2006



Vehicle Theft Reported by Month Charlotte-Mecklenburg Police Department: 2002-2006



Arson Reported by Month Charlotte-Mecklenburg Police Department: 2002-2006



Index Offenses Reported by Division and Service Area of Occurrence									
West Service Area: Jan, 2005-2006									
INDEX_CATEGORIES	Westover (A2)			Freedom (A3)			West Service Area		
	2005	2006	% Change	2005	2006	% Change	2005	2006	% Change
MURDER & NON-NEGLIGENT MANSLAUGHTER	1	0	-100.0%	0	0	NA	1	0	-100.0%
RAPE	1	2	100.0%	2	2	0.0%	3	4	33.3%
ACTUAL	1	2	100.0%	2	2	0.0%	3	4	33.3%
ATTEMPTED	0	0	NA	0	0	NA	0	0	NA
ROBBERY	23	20	-13.0%	49	16	-67.3%	72	36	-50.0%
ARMED	20	19	-5.0%	44	13	-70.5%	64	32	-50.0%
STRONG-ARM	3	1	-66.7%	5	3	-40.0%	8	4	-50.0%
AGGRAVATED ASSAULT	30	53	76.7%	46	26	-43.5%	76	79	3.9%
BURGLARY	86	92	7.0%	144	171	18.8%	230	263	14.3%
RESIDENTIAL	39	56	43.6%	83	102	22.9%	122	158	29.5%
COMMERCIAL	47	36	-23.4%	61	69	13.1%	108	105	-2.8%
LARCENY	120	122	1.7%	201	228	13.4%	321	350	9.0%
FROM AUTO	61	57	-6.6%	89	116	30.3%	150	173	15.3%
BICYCLE	0	1	NA	2	0	-100.0%	2	1	-50.0%
SHOPLIFTING	8	20	150.0%	18	26	44.4%	26	46	76.9%
OTHERS	51	44	-13.7%	92	86	-6.5%	143	130	-9.1%
VEHICLE THEFT	29	60	106.9%	63	62	-1.6%	92	122	32.6%
ARSON	0	4	NA	1	3	200.0%	1	7	600.0%
TOTALS	290	353	21.7%	506	508	0.4%	796	861	8.2%
VIOLENT	55	75	36.4%	97	44	-54.6%	152	119	-21.7%
PROPERTY	235	278	18.3%	409	464	13.4%	644	742	15.2%

Index Offenses Reported by Division and Service Area of Occurrence									
Southeast Service Area: Jan, 2005-2006									
INDEX_CATEGORIES	Providence (B1)			Independence (B3)			Southeast Service Area		
	2005	2006	% Change	2005	2006	% Change	2005	2006	% Change
MURDER & NON-NEGLIGENT MANSLAUGHTER	1	1	0.0%	0	0	NA	1	1	0.0%
RAPE	0	1	NA	4	2	-50.0%	4	3	-25.0%
ACTUAL	0	1	NA	4	2	-50.0%	4	3	-25.0%
ATTEMPTED	0	0	NA	0	0	NA	0	0	NA
ROBBERY	11	4	-63.6%	16	26	62.5%	27	30	11.1%
ARMED	8	2	-75.0%	11	21	90.9%	19	23	21.1%
STRONG-ARM	3	2	-33.3%	5	5	0.0%	8	7	-12.5%
AGGRAVATED ASSAULT	9	8	-11.1%	23	16	-30.4%	32	24	-25.0%
BURGLARY	62	95	53.2%	99	104	5.1%	161	199	23.6%
RESIDENTIAL	45	47	4.4%	89	79	-11.2%	134	126	-6.0%
COMMERCIAL	17	48	182.4%	10	25	150.0%	27	73	170.4%
LARCENY	157	140	-10.8%	190	184	-3.2%	347	324	-6.6%
FROM AUTO	75	65	-13.3%	115	90	-21.7%	190	155	-18.4%
BICYCLE	2	0	-100.0%	0	2	NA	2	2	0.0%
SHOPLIFTING	17	29	70.6%	17	29	70.6%	34	58	70.6%
OTHERS	63	46	-27.0%	58	63	8.6%	121	109	-9.9%
VEHICLE THEFT	37	24	-35.1%	68	60	-11.8%	105	84	-20.0%
ARSON	1	1	0.0%	3	2	-33.3%	4	3	-25.0%
TOTALS	278	274	-1.4%	403	394	-2.2%	681	668	-1.9%
VIOLENT	21	14	-33.3%	43	44	2.3%	64	58	-9.4%
PROPERTY	257	260	1.2%	360	350	-2.8%	617	610	-1.1%

The data in the district breakdowns does not include a small number of offenses in which the offense location (or reporting location if offense location was unknown) was entered without one of the 12 valid division assignments. Districts are not equal in geographic size, demographics, zoning/development, and other factors that influence the rate of crimes committed in an area. Therefore, the comparison of raw offense totals across districts is **not** advisable.

Index Offenses Reported by Division and Service Area of Occurrence									
Northeast Service Area: Jan, 2005-2006									
INDEX_CATEGORIES	North (C1)			Hickory Grove (C3)			Northeast Service Area		
	2005	2006	% Change	2005	2006	% Change	2005	2006	% Change
MURDER & NON-NEGLIGENT MANSLAUGHTER	1	0	-100.0%	1	0	-100.0%	2	0	-100.0%
RAPE	3	4	33.3%	1	3	200.0%	4	7	75.0%
ACTUAL	3	4	33.3%	1	3	200.0%	4	7	75.0%
ATTEMPTED	0	0	NA	0	0	NA	0	0	NA
ROBBERY	29	29	0.0%	22	19	-13.6%	51	48	-5.9%
ARMED	24	26	8.3%	19	17	-10.5%	43	43	0.0%
STRONG-ARM	5	3	-40.0%	3	2	-33.3%	8	5	-37.5%
AGGRAVATED ASSAULT	22	21	-4.5%	40	32	-20.0%	62	53	-14.5%
BURGLARY	167	176	5.4%	120	147	22.5%	287	323	12.5%
RESIDENTIAL	119	101	-15.1%	90	108	20.0%	209	209	0.0%
COMMERCIAL*	48	75	56.3%	30	39	30.0%	78	114	46.2%
LARCENY	347	339	-2.3%	157	136	-13.4%	504	475	-5.8%
FROM AUTO	201	202	0.5%	81	76	-6.2%	282	278	-1.4%
BICYCLE	0	2	NA	2	3	50.0%	2	5	150.0%
SHOPLIFTING	33	36	9.1%	12	10	-16.7%	45	46	2.2%
OTHERS	113	99	-12.4%	62	47	-24.2%	175	146	-16.6%
VEHICLE THEFT	83	75	-9.6%	72	50	-30.6%	155	125	-19.4%
ARSON	0	3	NA	3	3	0.0%	3	6	100.0%
TOTALS	652	647	-0.8%	416	390	-6.3%	1068	1037	-2.9%
VIOLENT PROPERTY	55 597	54 593	-1.8% -0.7%	64 352	54 336	-15.6% -4.5%	119 949	108 929	-9.2% -2.1%

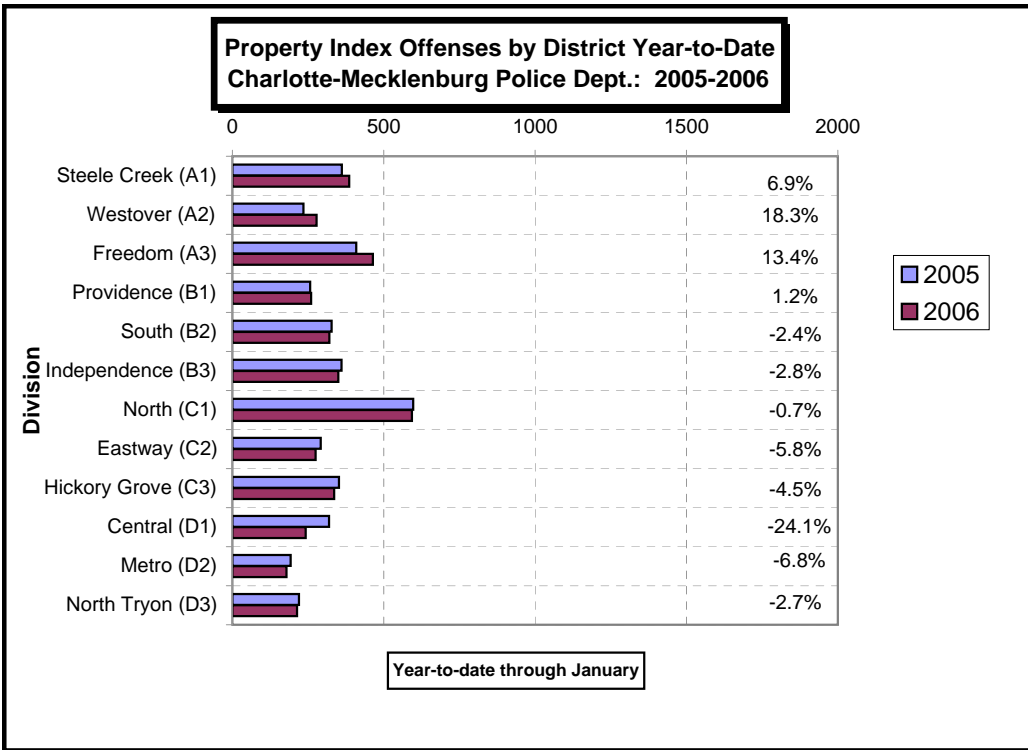
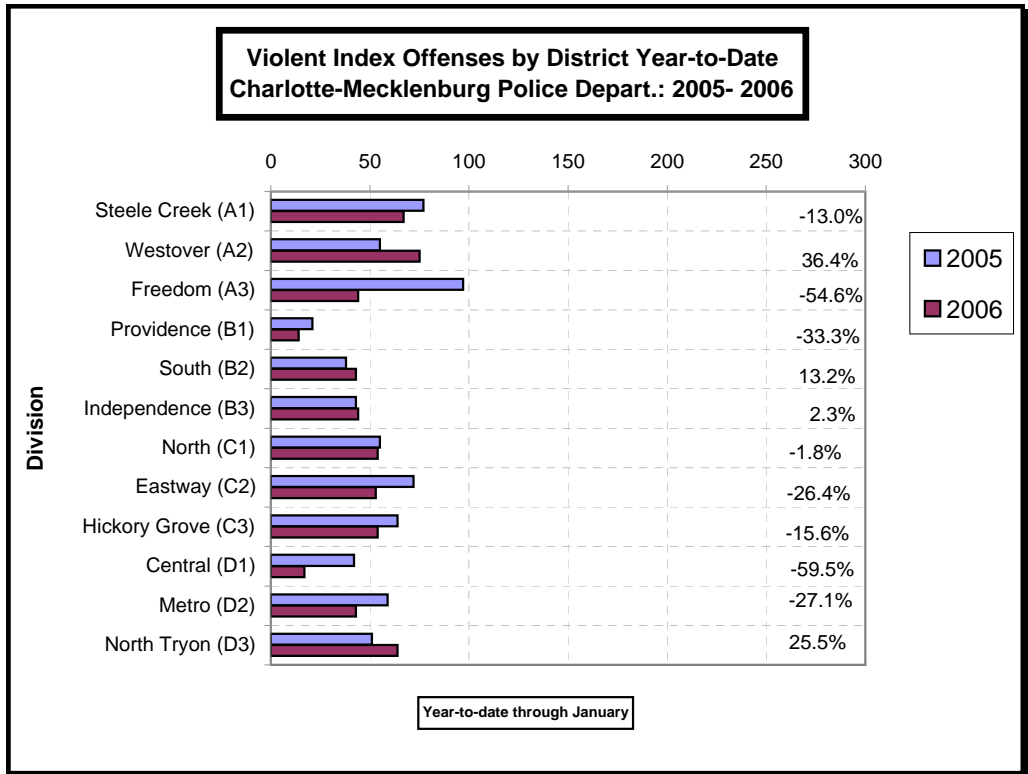
Index Offenses Reported by Division and Service Area of Occurrence									
Central Service Area: Jan, 2005-2006									
INDEX_CATEGORIES	Central (D1)			Metro (D2)			Central Service Area		
	2005	2006	% Change	2005	2006	% Change	2005	2006	% Change
MURDER & NON-NEGLIGENT MANSLAUGHTER	0	0	NA	2	0	-100.0%	2	0	-100.0%
RAPE	3	3	0.0%	1	1	0.0%	4	4	0.0%
ACTUAL	2	3	50.0%	1	1	0.0%	3	4	33.3%
ATTEMPTED	1	0	-100.0%	0	0	NA	1	0	-100.0%
ROBBERY	20	6	-70.0%	29	16	-44.8%	49	22	-55.1%
ARMED	10	4	-60.0%	21	12	-42.9%	31	16	-48.4%
STRONG-ARM	10	2	-80.0%	8	4	-50.0%	18	6	-66.7%
AGGRAVATED ASSAULT	19	8	-57.9%	27	26	-3.7%	46	34	-26.1%
BURGLARY	41	39	-4.9%	65	60	-7.7%	106	99	-6.6%
RESIDENTIAL	15	14	-6.7%	57	33	-42.1%	72	47	-34.7%
COMMERCIAL	26	25	-3.8%	8	27	237.5%	34	52	52.9%
LARCENY	250	169	-32.4%	87	88	1.1%	337	257	-23.7%
FROM AUTO	148	86	-41.9%	47	44	-6.4%	195	130	-33.3%
BICYCLE	0	0	NA	1	0	-100.0%	1	0	-100.0%
SHOPLIFTING	5	11	120.0%	3	3	0.0%	8	14	75.0%
OTHERS	97	72	-25.8%	36	41	13.9%	133	113	-15.0%
VEHICLE THEFT	28	32	14.3%	38	29	-23.7%	66	61	-7.6%
ARSON	0	2	NA	2	2	0.0%	2	4	100.0%
TOTALS	361	259	-28.3%	251	222	-11.6%	612	481	-21.4%
VIOLENT PROPERTY	42 319	17 242	-59.5% -24.1%	59 192	43 179	-27.1% -6.8%	101 511	60 421	-40.6% -17.6%

The data in the district breakdowns does not include a small number of offenses in which the offense location (or reporting location if offense location was unknown) was entered without one of the 12 valid division assignments. Districts are not equal in geographic size, demographics, zoning/development, and other factors that influence the rate of crimes committed in an area. Therefore, the comparison of raw offense totals across districts is **not** advisable.

Index Offenses Reported by Division and Service Area of Occurrence									
East Service Area: Jan, 2005-2006									
INDEX_CATEGORIES	Eastway (C2)			North Tryon (D3)			East Service Area		
	2005	2006	% Change	2005	2006	% Change	2005	2006	% Change
MURDER & NON-NEGLIGENT MANSLAUGHTER	1	0	-100.0%	0	2	NA	1	2	100.0%
RAPE	4	2	-50.0%	2	1	-50.0%	6	3	-50.0%
ACTUAL	4	2	-50.0%	2	1	-50.0%	6	3	-50.0%
ATTEMPTED	0	0	NA	0	0	NA	0	0	NA
ROBBERY	45	34	-24.4%	26	27	3.8%	71	61	-14.1%
ARMED	33	29	-12.1%	23	23	0.0%	56	52	-7.1%
STRONG-ARM	12	5	-58.3%	3	4	33.3%	15	9	-40.0%
AGGRAVATED ASSAULT	22	17	-22.7%	23	34	47.8%	45	51	13.3%
BURGLARY	77	71	-7.8%	80	84	5.0%	157	155	-1.3%
RESIDENTIAL	53	53	0.0%	53	46	-13.2%	106	99	-6.6%
COMMERCIAL	24	18	-25.0%	27	38	40.7%	51	56	9.8%
LARCENY	163	145	-11.0%	107	90	-15.9%	270	235	-13.0%
FROM AUTO	73	66	-9.6%	62	48	-22.6%	135	114	-15.6%
BICYCLE	0	0	NA	2	1	-50.0%	2	1	-50.0%
SHOPLIFTING	34	27	-20.6%	6	4	-33.3%	40	31	-22.5%
OTHERS	56	52	-7.1%	37	37	0.0%	93	89	-4.3%
VEHICLE THEFT	50	58	16.0%	31	39	25.8%	81	97	19.8%
ARSON	2	1	-50.0%	2	1	-50.0%	4	2	-50.0%
TOTALS	364	328	-9.9%	271	278	2.6%	635	606	-4.6%
VIOLENT	72	53	-26.4%	51	64	25.5%	123	117	-4.9%
PROPERTY	292	275	-5.8%	220	214	-2.7%	512	489	-4.5%

Index Offenses Reported by Division and Service Area of Occurrence									
South Service Area: Jan, 2005-2006									
INDEX_CATEGORIES	Steele Creek (A1)			South (B2)			South Service Area		
	2005	2006	% Change	2005	2006	% Change	2005	2006	% Change
MURDER & NON-NEGLIGENT MANSLAUGHTER	0	1	NA	0	3	NA	0	4	NA
RAPE	4	3	-25.0%	1	2	100.0%	5	5	0.0%
ACTUAL	4	2	-50.0%	1	2	100.0%	5	4	-20.0%
ATTEMPTED	0	1	NA	0	0	NA	0	1	NA
ROBBERY	39	31	-20.5%	20	10	-50.0%	59	41	-30.5%
ARMED	32	26	-18.8%	18	8	-55.6%	50	34	-32.0%
STRONG-ARM	7	5	-28.6%	2	2	0.0%	9	7	-22.2%
AGGRAVATED ASSAULT	34	32	-5.9%	17	28	64.7%	51	60	17.6%
BURGLARY	61	99	62.3%	59	84	42.4%	120	183	52.5%
RESIDENTIAL	26	72	176.9%	36	61	69.4%	62	133	114.5%
COMMERCIAL	35	27	-22.9%	23	23	0.0%	58	50	-13.8%
LARCENY	229	234	2.2%	228	190	-16.7%	457	424	-7.2%
FROM AUTO	141	133	-5.7%	143	109	-23.8%	284	242	-14.8%
BICYCLE	1	0	-100.0%	1	0	-100.0%	2	0	-100.0%
SHOPLIFTING	17	13	-23.5%	15	15	0.0%	32	28	-12.5%
OTHERS	70	88	25.7%	69	66	-4.3%	139	154	10.8%
VEHICLE THEFT	70	49	-30.0%	37	45	21.6%	107	94	-12.1%
ARSON	1	4	300.0%	4	1	-75.0%	5	5	0.0%
TOTALS	438	453	3.4%	366	363	-0.8%	804	816	1.5%
VIOLENT	77	67	-13.0%	38	43	13.2%	115	110	-4.3%
PROPERTY	361	386	6.9%	328	320	-2.4%	689	706	2.5%

The data in the district breakdowns does not include a small number of offenses in which the offense location (or reporting location if offense location was unknown) was entered without one of the 12 valid division assignments. Districts are not equal in geographic size, demographics, zoning/development, and other factors that influence the rate of crimes committed in an area. Therefore, the comparison of raw offense totals across districts is **not** advisable.



The data in the district breakdowns does not include a small number of offenses in which the offense location (or reporting location if offense location was unknown) was entered without one of the 12 valid division assignments. Districts are not equal in geographic size, demographics, zoning/development, and other factors that influence the rate of crimes committed in an area. Therefore, the comparison of raw offense totals across districts is **not** advisable.

Arrests by Charlotte-Mecklenburg Police Department
Year-To-Date: 2005-2006
(Through January)

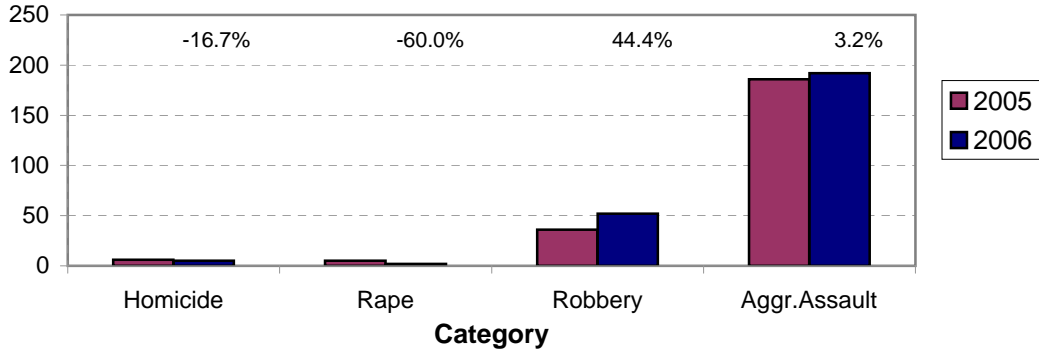
CATEGORY	ADULTS (AGE 18 & OLDER):			JUVENILES (UNDER 18):			TOTAL ARRESTS:		
	2005 Y-T-D	2006 Y-T-D	% CHANGE	2005 Y-T-D	2006 Y-T-D	% CHANGE	2005 Y-T-D	2006 Y-T-D	% CHANGE
Murder/Non-Negligent Manslaughter	6	5	-16.7%	0	0	NA	6	5	-16.7%
Negligent & Vehicular Manslaughter	1	1	0.0%	0	0	NA	1	1	0.0%
Rape	5	2	-60.0%	0	0	NA	5	2	-60.0%
Robbery	24	34	41.7%	12	18	50.0%	36	52	44.4%
Aggravated Assault	166	150	-9.6%	20	42	110.0%	186	192	3.2%
Burglary	53	62	17.0%	30	23	-23.3%	83	85	2.4%
Larceny	117	120	2.6%	47	50	6.4%	164	170	3.7%
Vehicle Theft	4	5	25.0%	5	11	120.0%	9	16	77.8%
Non-Aggravated Assault	151	183	21.2%	63	68	7.9%	214	251	17.3%
Arson	1	2	100.0%	1	3	200.0%	2	5	150.0%
Forgery/Counterfiet	13	17	30.8%	1	0	-100.0%	14	17	21.4%
Fraud	39	41	5.1%	0	0	NA	39	41	5.1%
Embezzlement	5	10	100.0%	1	1	0.0%	6	11	83.3%
Stolen Property	43	61	41.9%	7	14	100.0%	50	75	50.0%
Vandalism	12	24	100.0%	17	21	23.5%	29	45	55.2%
Weapons	53	64	20.8%	7	8	14.3%	60	72	20.0%
Prostitution	28	28	0.0%	0	0	NA	28	28	0.0%
Sex Offenses	28	13	-53.6%	0	0	NA	28	13	-53.6%
Drugs	196	233	18.9%	14	38	171.4%	210	271	29.0%
Gambling	0	0	NA	0	0	NA	0	0	NA
Offenses vs. Family	1	1	0.0%	0	0	NA	1	1	0.0%
DUI	153	159	3.9%	0	3	NA	153	162	5.9%
Liquor	11	8	-27.3%	1	0	-100.0%	12	8	-33.3%
Disorder.Conduct	44	48	9.1%	44	24	-45.5%	88	72	-18.2%
Other Non-Traffic	594	702	18.2%	53	85	60.4%	647	787	21.6%
VIOLENT INDEX¹	201	191	-5.0%	32	60	87.5%	233	251	7.7%
PROPERTY INDEX²	175	189	8.0%	83	87	4.8%	258	276	7.0%
INDEX SUBTOTAL	376	380	1.1%	115	147	27.8%	491	527	7.3%
PART 2 SUBTOTAL³	1372	1593	16.1%	208	262	26.0%	1580	1855	17.4%
TOTAL	1748	1973	12.9%	323	409	26.6%	2071	2382	15.0%

¹Violent Index includes murder and non-negligent manslaughter, rape, robbery, and aggravated assault.

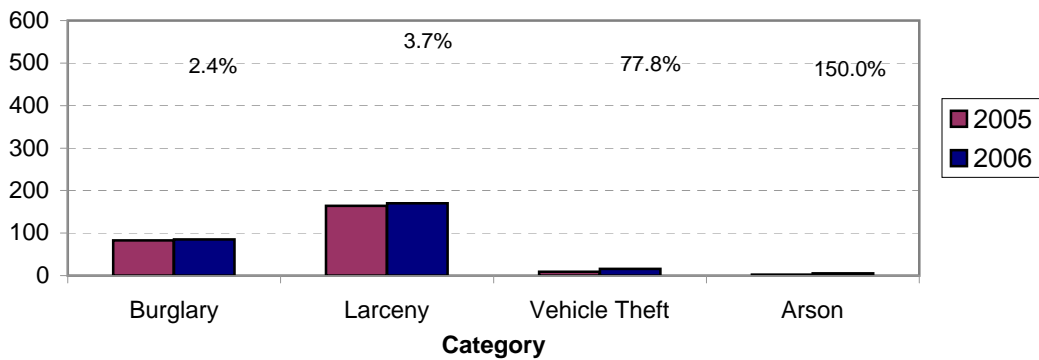
²Property Index includes burglary, larceny, vehicle theft, and arson.

³Part 2 crimes include crime categories not counted in the Index totals.

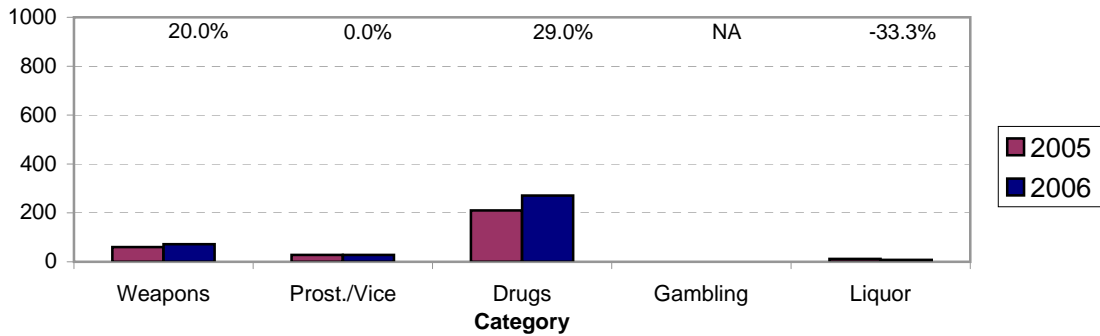
**Violent Index Arrests Year-to-Date
Charlotte-Mecklenburg Police Department: 2005-2006
(Through January)**



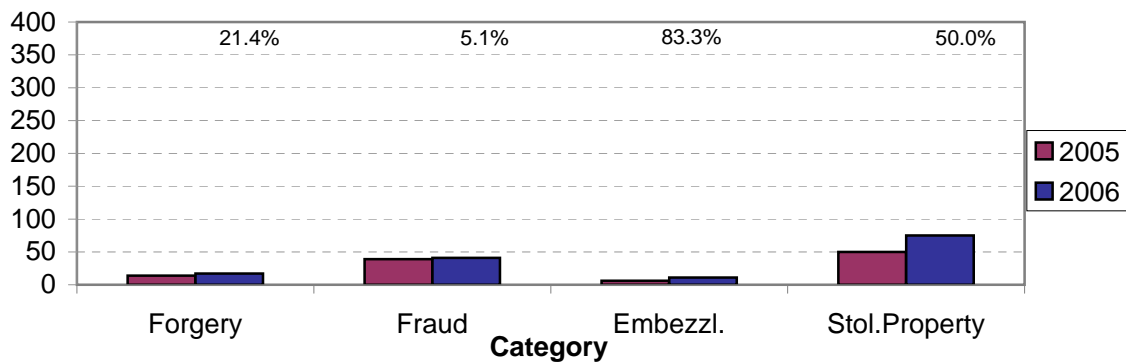
**Property Index Arrests Year-to-Date
Charlotte-Mecklenburg Police Department: 2004-2005
(Through January)**



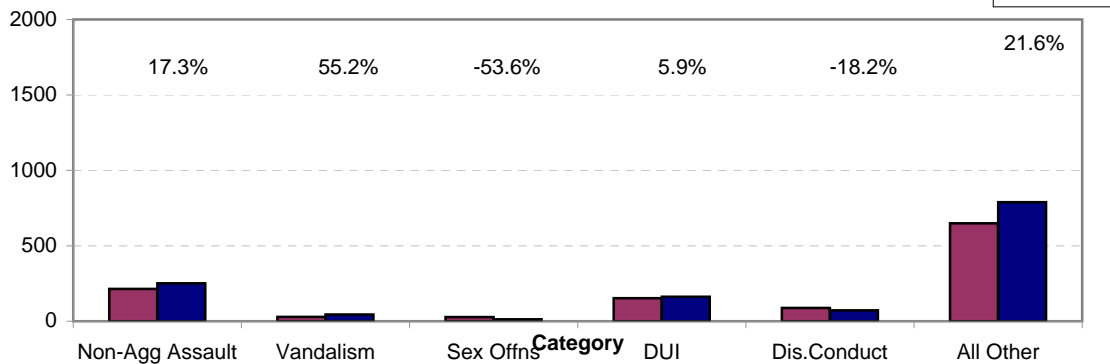
**Arrests for Vice/CCW/Drugs/Etc. Year-to-Date
Charlotte-Mecklenburg Police Department: 2005- 2006
(Through January)**



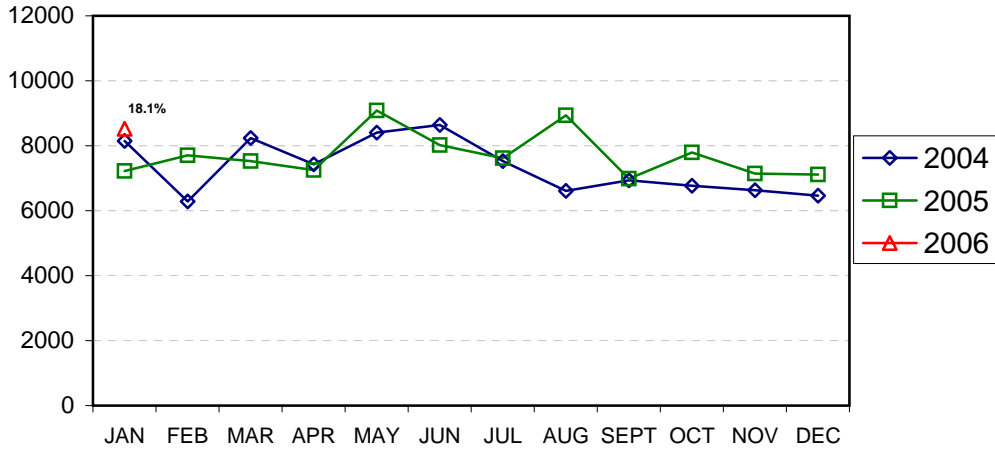
**Arrests for Property/White Collar Crime Year-to-Date
Charlotte-Mecklenburg Police Department: 2005- 2006
(Through January)**



**Arrests for Other Categories Year-to-Date
Charlotte-Mecklenburg Police Department: 2005 - 2006
(Through January)**



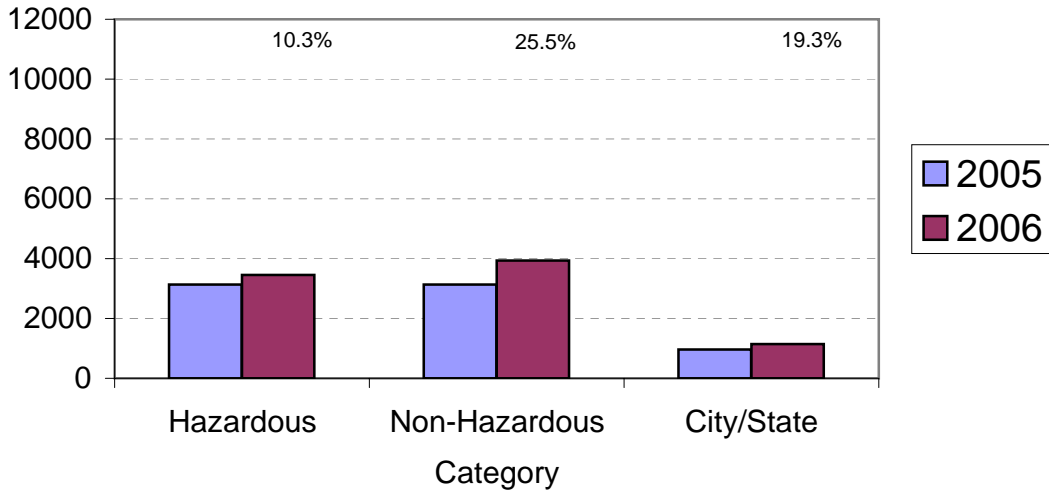
**Total Citation Enforcement by Month
Charlotte-Mecklenburg Police Dept.: 2004-2006**



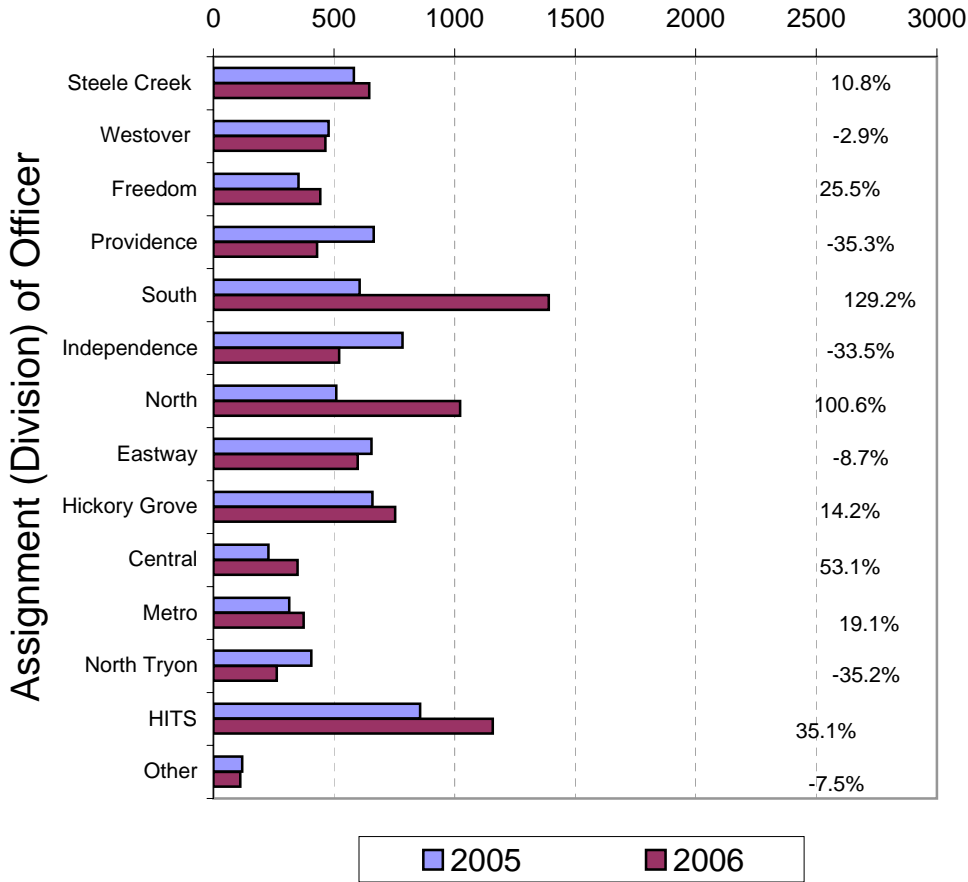
(Through January, 2006)

(Includes Hazardous, Non-Hazardous, and City/State Citations; percentages are current month compared to same month in previous year)

**CMPD Citation Enforcement by Category
Year-to-Date, 2005 - 2006
(Through January, 2006)**



**Citations Issued Year-to-Date by CMPD Divisions
2005 - 2006
(Through January, 2006)**

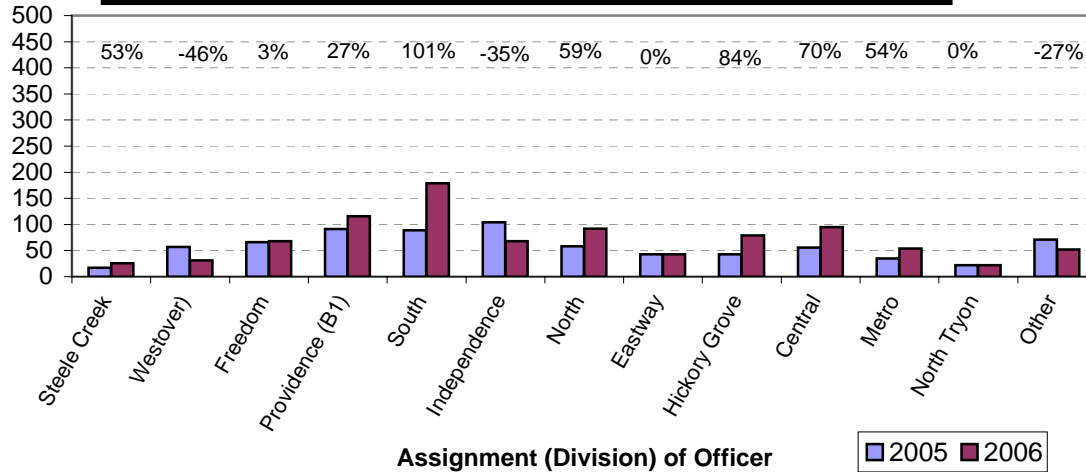


Note: 2003 and 2004 data for HITS and Other was adjusted in April, 2004.

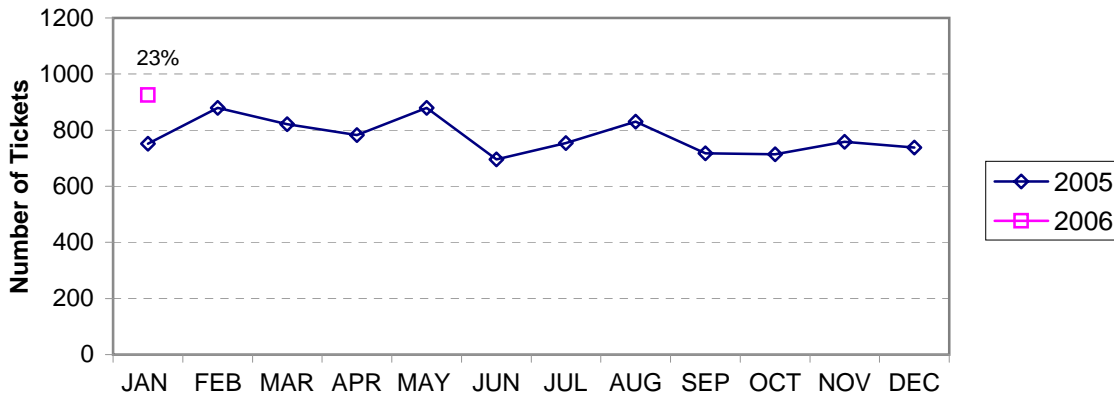
Citations Issued by the Charlotte Mecklenburg Police Officers Year-to-Date (Through January, 2006)			
	2005	2006	% Change
Hazardous	3,129	3,451	10.3%
Non-Hazardous	3,133	3,931	25.5%
Other City/State Statute/Ordinance	958	1,143	19.3%
Total	7,220	8,525	18.1%

"Safe Speed" Program: 2005-2006 (Through January, 2006)			
	2005	2006	% Change
Total Citations	3433	3006	-12%
(Citations issued through the "Safe Speed" program are not included in the CMPD citation totals used in the summary chart above or in the other citation charts.)			

**Warning Ticket Violations Issued by Division
Charlotte-Mecklenburg Police Department, 2005- 2006
Through January, 2006**



**Total Warning Ticket Violations Issued by Month
Charlotte-Mecklenburg Police Department: 2005 - 2006**



**Warning Tickets Issued Year-to-Date
Charlotte-Mecklenburg Police Department
Through January, 2006**

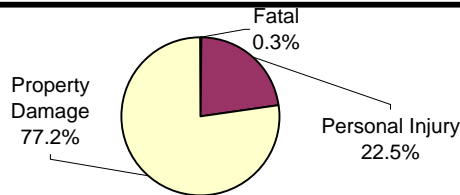
	2005	2006	% Change
Total Warning Tickets	752	925	23.0%

**Traffic Collision Reports
Charlotte-Mecklenburg Police Department
Year-to-Date: 2005-2006
(Through January)**

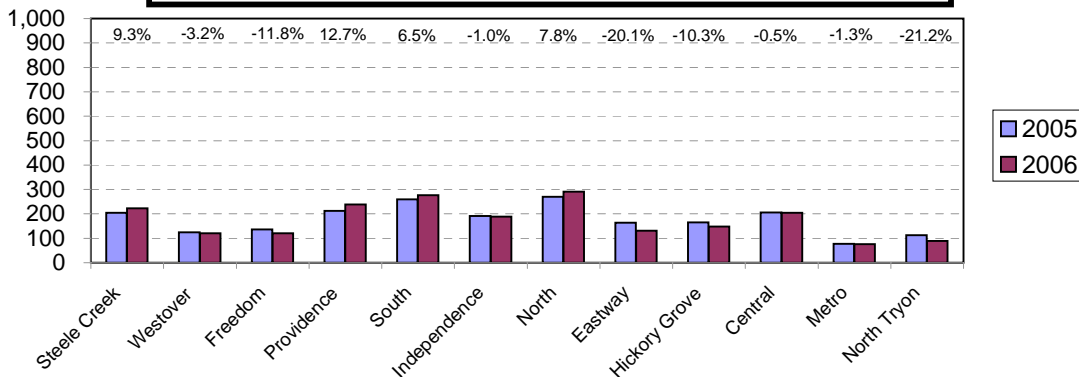
<u>Type</u>	<u>2005</u>	<u>2006</u>	<u>% Change</u>
Fatal Collisions	6	6	0.0%
Vehicle Occupants Killed	6	7	16.7%
Pedestrians Killed	1	0	-100.0%
Personal Injury Collisions	509	480	-5.7%
Property Damage Collisions	1622	1636	0.9%
Total Collisions	2137	2122	-0.7%

* The number of fatal collisions and the number of persons killed (fatalities) in those incidents is taken from the HITS file. Their records are updated for deaths that occur after the initial report is filed. Figures for 2005 may be adjusted after publication of 2005 Annual Report.

**Traffic Collisions Reported by Type
Charlotte-Mecklenburg Police Department:
2006 Year-to-Date
(Through January)**



**Traffic Collisions Reported by Charlotte-Mecklenburg Police Dept.
Year-to-Date By Location (Division) : 2005 -2006
(Through January)**



**CITIZEN-INITIATED CALLS FOR SERVICE¹ BY TYPE
CHARLOTTE-MECKLENBURG POLICE DEPARTMENT**

<u>Type of Call²</u>	<u>2005 Year-to-Date</u>	<u>2006 Year-to-Date</u>	<u>Year-to-Date</u>
	<u>January</u>	<u>January</u>	<u>% Change</u>
ABC RELATED	139	147	5.8%
ACCIDENT	2739	2830	3.3%
ALARM	2613	2708	3.6%
ANIMAL CONTROL	22	15	-31.8%
ASSAULT	369	328	-11.1%
ASSAULT WITH DEADLY WEAPON	123	138	12.2%
ASSIST OTHER AGENCY	650	643	-1.1%
BOMB THREAT	6	10	66.7%
BREAK/ENTER	1602	1893	18.2%
COMMUNICATING THREATS	254	137	-46.1%
COUNTY SECURITY ³	1	2	100.0%
CRIMINAL INTELLIGENCE	0	1	NA
DAMAGE TO PROPERTY	616	301	-51.1%
DEATH	26	30	15.4%
DISTURBANCE	1913	2034	6.3%
DOMESTIC INCIDENT	2888	2849	-1.4%
DRUG RELATED	297	283	-4.7%
FIGHT	242	302	24.8%
FIRE	1	0	-100.0%
FIRE CASE	8	6	-25.0%
FRAUD/FORGERY	229	113	-50.7%
GAMBLING	3	2	-33.3%
HARASSMENT	153	19	-87.6%
HIT AND RUN	563	600	6.6%
JUVENILE RELATED	221	177	-19.9%
KIDNAPPING	19	17	-10.5%
LAKE ENFORCEMENT	4	1	-75.0%
LARCENY	2432	726	-70.1%
LOITERING	365	449	23.0%
MAJOR INCIDENT	1	3	200.0%
MISSING PERSON	562	507	-9.8%
NOISE COMPLAINT	975	1063	9.0%
OFFENSE AGAINST FAMILY	0	1	NA
OFFICER CALLED IN	58	44	-24.1%
OVERDOSE	32	23	-28.1%
PORNOGRAPHY	1	1	0.0%
PROPERTY	320	415	29.7%
PROSTITUTION	63	53	-15.9%
PUBLIC SERVICE	1623	1911	17.7%
QUALITY OF LIFE	101	209	106.9%
ROBBERY	363	267	-26.4%
SEX CRIME	82	94	14.6%
SPECIAL SERVICE REQUEST	0	0	NA
SUICIDE	90	105	16.7%
SUSPICIOUS PERSON	1592	1701	6.8%
TRAFFIC RELATED	816	882	8.1%
TRESPASS	296	269	-9.1%
VEHICLE RELATED	2986	2456	-17.7%
VIOLENT CRIMES TASK FORCE	0	0	NA
WARRANT RELATED	312	263	-15.7%
WEAPON RELATED	623	735	18.0%
911 HANG UP / CALLBACK	1899	1785	-6.0%
TOTAL	31293	29548	-5.6%

¹These totals exclude duplicate and cancelled calls for service; they include calls handled by the Crime Reporting Unit as well as by division field officers, detectives and related CMPD staff.

²The type of call is entered by Communications based on the 911 call unless updated by an officer assigned to respond.

³In this summary, calls to Animal Control, Mecklenburg County Security, or Davidson Police are not included unless they also involve the dispatching of C-MPD field officers or detectives.

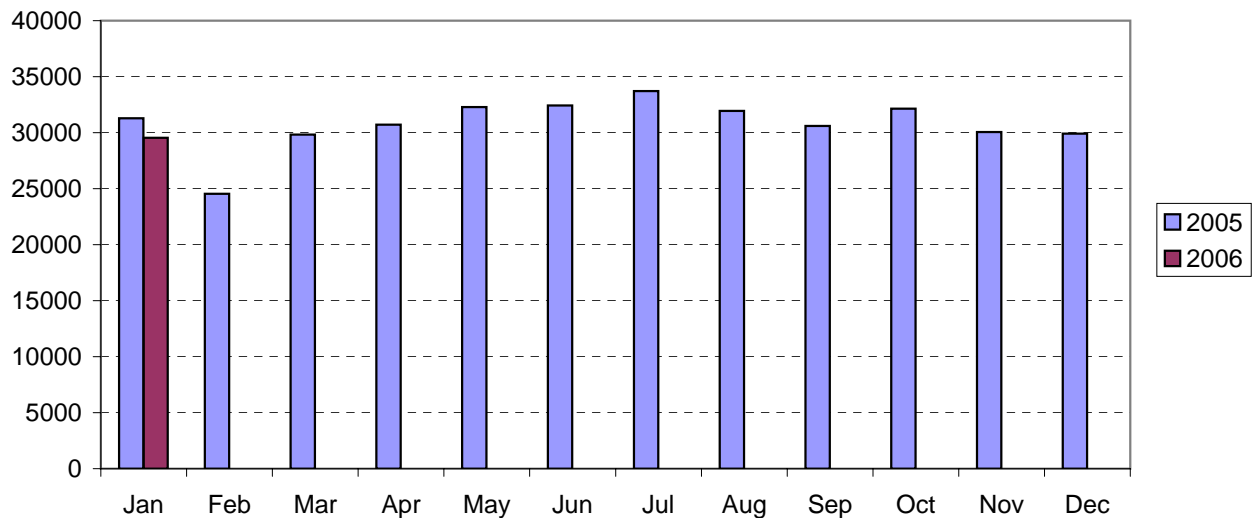
CITIZEN-INITIATED CALLS FOR SERVICE BY ORIGINATING CMPD DIVISION^{1,2}
 (Based on District of Call Origination, Not on Assigned District of Responding Units)

<u>District</u>	<u>2005 Year-to-Date</u>	<u>2006 Year-to-Date</u>	<u>Year-to-Date</u>
	<u>January</u>	<u>January</u>	<u>% Change</u>
Central-01 (D1)	2205	1779	-19.3%
Metro-02 (D2)	1828	1649	-9.8%
Eastway-06 (C2)	2211	2145	-3.0%
North Tryon-07 (D3)	1898	1783	-6.1%
North-11 (C1)	3803	3743	-1.6%
Hickory Grove-12 (C3)	2769	2843	2.7%
Providence-16 (B1)	2116	2080	-1.7%
Independence-17 (B3)	2734	2471	-9.6%
Steele Creek-21 (A1)	2635	2525	-4.2%
South-22 (B2)	2900	2642	-8.9%
Westover-26 (A2)	2101	2130	1.4%
Freedom-27 (A3)	3201	3054	-4.6%

¹These totals exclude duplicate and cancelled calls for service; they include calls handled by the Crime Reporting Unit as well as by division field officers, detectives and other CMPD staff.

²Calls where the location could not be assigned to one of the divisions are not included in this chart.

Citizen-Initiated Calls for Service¹ by Month
Charlotte-Mecklenburg Police Department: 2005-2006



¹These totals exclude duplicate and cancelled calls for service; they include calls handled by the Crime Reporting Unit as well as by division field officers, detectives and other CMPD staff.

Uniform Crime Reporting Procedures

The Charlotte-Mecklenburg Police Department reports offense and arrest statistics in accordance with standard Uniform Crime Reporting (UCR) guidelines. UCR policy states that any adjustments to previous months can be made on the current month's report:

...In tabulating crime counts, an agency may find that offense totals for past months require adjustments due to developments in the investigation or other handling of the matter. It may be necessary to adjust totals reported to UCR for the past month or prior months. Needed adjustments can be made on the current month's report and do not affect the reliability of the figures in that such adjustments tend to equalize each other from month to month over a period of time.

- *Uniform Crime Reporting Handbook*, FBI, 1984, p. 42-43

We are required to report crime monthly to the UCR program, and we do therefore make an effort to process monthly changes in a timely manner. However, occasionally due to the review and processing required for reclassifying, unfounding or clearing cases, the current month's totals may reflect the processing of a backlog of these changes from previous months.

Users of the data are cautioned that conclusions about substantial changes in crime trends or in clearance rates based on only a single month's data or trend may reflect some of these adjustments. For this reason, in addition to the monthly and year-to-date trends on Page 1, the monthly report routinely includes a comparison for the previous 12 months (p. 4), as well as graphs that provide seasonal/monthly comparisons over a five-year period (p. 5-8).

UCR Definitions and Terms:

Index Crime: the eight offenses that the national UCR program tracks on a yearly basis to gauge trends in the extent of crime, despite differences among state and local criminal statutes. These offenses were selected on the basis of several factors: seriousness, frequency of occurrence, pervasiveness in all geographic areas, and/or likelihood of being reported to law enforcement.

Violent Index: includes the offenses of murder/non-negligent manslaughter, rape, robbery, and aggravated assault

Property Index: includes the offenses of burglary, larceny, vehicle theft and arson

Murder/non-negligent manslaughter: the willful killing of one human being by another

Rape: the carnal knowledge of a female forcibly and against her will [Note: This offense does not include other sex offenses or statutory (non-forcible) rape.]

Robbery: the taking or attempt to take anything of value from the care, custody, or control of a person or persons by force, threat of force or violence, or by putting the victim in fear.

Aggravated assault: an unlawful attack by one person on another for the purpose of inflicting severe or aggravated bodily injury; includes 1) all assaults in which a weapon of any type is used or is threatened to be used and/or 2) all assaults where serious injury occurs.

Burglary: the unlawful entry or attempted entry of a structure to commit a felony or a theft

Larceny-Theft: the unlawful taking (or attempt), carrying, leading, or riding away of property from the possession or constructive possession of another [Note: Larceny/theft of a motor vehicle is classed separately.]

Vehicle Theft: the theft or attempted theft of a motor vehicle (a self-propelled vehicle that runs on land and not on rails, excluding farm and construction equipment)

Arson: the willful or malicious burning or attempt to burn, with or without intent to defraud, a structure, motor vehicle, personal property of another, etc.

Hierarchy rule: For cases involving multiple-offenses, the incident is classified and counted based on the highest offense on a hierarchy of crimes established by UCR. For example, for an incident involving a rape and a burglary, the incident would be counted in the rape category because rape is higher than burglary on the hierarchy.

Clearance: A case is considered cleared when either at least one arrest is made for the offense or when an offender's identity is established by investigation but the offender will not be arrested for reasons outside law enforcement control (offender dies, victim refuses to prosecute, district attorney declines prosecution, extradition is refused, etc.).

Unfounding: A case is "unfounded" and subtracted from the crime counts when investigation establishes that the incident did not actually occur or that the actions within the incident are not criminal based on current law.

For additional information, please consult the *UCR Handbook* on the FBI website at <http://www.fbi.gov/ucr/ucr.htm>.

This report was compiled by the Research, Planning, and Analysis Division.

We make an effort to present the most accurate information available at the time this report is published. Please notify the Research, Planning, and Analysis office if you have any questions about the data in this report or about an error that was missed in proofing the report.