



**CHARLOTTE-MECKLENBURG POLICE DEPARTMENT
MONTHLY SUMMARY REPORT
DECEMBER, 2005**

**Darrel Stephens
Chief of Police**

**INDEX OFFENSES REPORTED TO THE CHARLOTTE-MECKLENBURG POLICE DEPARTMENT
2004-2005**

Index Categories	Number of Offenses:			Rate per Estimated 100,000 Population ¹ :			
	<u>2004</u>	<u>2005</u>	<u>% Change</u>	<u>2004</u> Est. Pop. 695487 ¹	<u>2005</u> Est. Pop. 713445 ¹	<u>% Change</u>	
HOMICIDE (MURDER & NON-NEGLIGENT MANSLAUGHTER)	60	85	41.7% *	8.6	11.9	38.1%	
RAPE TOTAL	307	324	5.5% *	44.1	45.4	2.9%	
ACTUAL	277	306	10.5% *	39.8	42.9	7.7%	
ATTEMPT	30	18	-40.0% *	4.3	2.5	-41.5%	
ROBBERY TOTAL	2786	3649	31.0% *	400.6	511.5	27.7%	
ARMED	2107	3013	43.0% *	303.0	422.3	39.4%	
STRONG-ARM	679	636	-6.3% *	97.6	89.1	-8.7%	
AGGRAVATED ASSAULT TOTAL	4118	3876	-5.9% *	592.1	543.3	-8.2%	
BURGLARY TOTAL	12021	12783	6.3% *	1728.4	1791.7	3.7%	
RESIDENTIAL	8441	8194	-2.9% *	1213.7	1148.5	-5.4%	
COMMERCIAL	3580	4589	28.2% *	514.7	643.2	25.0%	

FORCE	9774	10451	6.9% *	1405.3	1464.9	4.2%	
NO FORCE	1520	1483	-2.4% *	218.6	207.9	-4.9%	
ATTEMPT	727	848	16.6% *	104.5	118.9	13.7%	
LARCENY TOTAL	28129	26708	-5.1% *	4044.5	3743.5	-7.4%	
\$200 AND OVER	13706	13090	-4.5% *	1970.7	1834.8	-6.9%	
\$50 TO \$200	5240	5373	2.5% *	753.4	753.1	0.0%	
UNDER \$50	9183	8245	-10.2% *	1320.4	1155.7	-12.5%	

FROM AUTO	14511	13487	-7.1% *	2086.5	1890.4	-9.4%	
BICYCLE	248	230	-7.3% *	35.7	32.2	-9.6%	
SHOPLIFTING	2866	2634	-8.1% *	412.1	369.2	-10.4%	
OTHERS	10504	10357	-1.4% *	1510.3	1451.7	-3.9%	
VEHICLE THEFT TOTAL	6777	7098	4.7% *	974.4	994.9	2.1%	
ARSON TOTAL	348	321	-7.8% *	50.0	45.0	-10.1%	
TOTALS	54546	54844	0.5% *	7842.8	7687.2	-2.0%	
VIOLENT ²	7271	7934	9.1% *	1045.5	1112.1	6.4%	
PROPERTY ²	47275	46910	-0.8% *	6797.4	6575.1	-3.3%	

¹Population estimates for 2004 and 2005 have been adjusted to use the Planning Commission's annual estimates.

²Violent Index includes homicide, rape, robbery, and aggravated assault; property Index includes burglary, larceny, vehicle theft and arson.

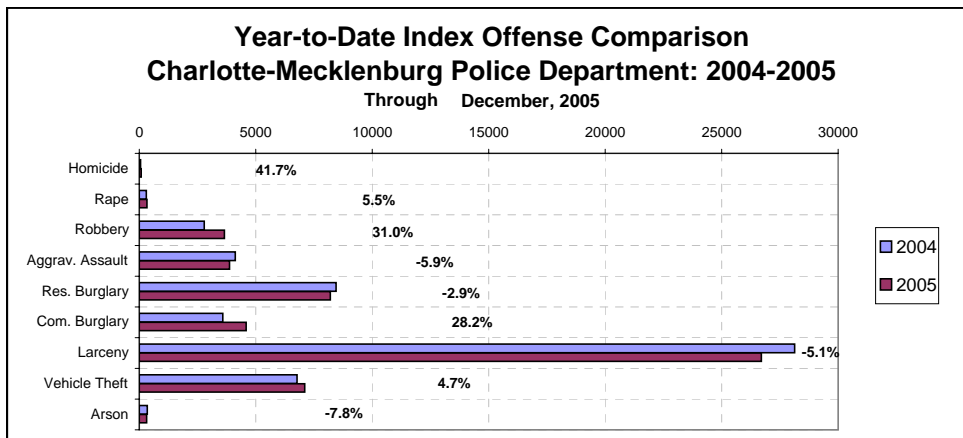
INDEX OFFENSES REPORTED TO CHARLOTTE-MECKLENBURG POLICE DEPARTMENT

December, 2005 INDEX OFFENSES	# THIS MONTH	% OF ALL INDEX	# LAST MONTH	MONTHLY % CHANGE	SAME MONTH LAST YEAR	MONTHLY % CHANGE	THIS YEAR TO DATE	LAST YEAR TO DATE	ANNUAL % CHANGE
HOMICIDE (MURDER & NON- NEGLIGENT MANSLAUGHTER)	7	0.1%	7	0.0%	6	16.7%	85	60	41.7%
RAPE TOTAL	16	0.3%	30	-46.7%	16	0.0%	324	307	5.5%
ACTUAL	15	0.3%	28	-46.4%	13	15.4%	306	277	10.5%
ATTEMPT	1	0.0%	2	-50.0%	3	-66.7%	18	30	-40.0%
ROBBERY TOTAL	380	7.8%	353	7.6%	311	22.2%	3649	2786	31.0%
ARMED	318	6.5%	301	5.6%	247	28.7%	3013	2107	43.0%
STRONG-ARM	62	1.3%	52	19.2%	64	-3.1%	636	679	-6.3%
AGGRAVATED ASSAULT TOTAL	247	5.1%	340	-27.4%	332	-25.6%	3876	4118	-5.9%
BURGLARY TOTAL	1335	27.4%	1266	5.5%	1086	22.9%	12783	12021	6.3%
RESIDENTIAL	834	17.1%	743	12.2%	725	15.0%	8194	8441	-2.9%
COMMERCIAL	501	10.3%	523	-4.2%	361	38.8%	4589	3580	28.2%

FORCE	1102	22.6%	1073	2.7%	904	21.9%	10451	9774	6.9%
NO FORCE	116	2.4%	107	8.4%	112	3.6%	1483	1520	-2.4%
ATTEMPT	117	2.4%	86	36.0%	70	67.1%	848	727	16.6%
LARCENY TOTAL	2227	45.7%	2194	1.5%	2368	-6.0%	26708	28129	-5.1%
\$200 AND OVER	1112	22.8%	1035	7.4%	1131	-1.7%	13090	13706	-4.5%
\$50 TO \$200	466	9.6%	467	-0.2%	474	-1.7%	5373	5240	2.5%
UNDER \$50	649	13.3%	692	-6.2%	763	-14.9%	8245	9183	-10.2%

FROM AUTO	1200	24.6%	1103	8.8%	1251	-4.1%	13487	14511	-7.1%
BICYCLE	4	0.1%	15	-73.3%	20	-80.0%	230	248	-7.3%
SHOPLIFTING	237	4.9%	261	-9.2%	246	-3.7%	2634	2866	-8.1%
OTHERS	786	16.1%	815	-3.6%	851	-7.6%	10357	10504	-1.4%
VEHICLE THEFT TOTAL	633	13.0%	537	17.9%	704	-10.1%	7098	6777	4.7%
ARSON TOTAL	27	0.6%	44	-38.6%	26	3.8%	321	348	-7.8%
TOTALS	4872	100.0%	4771	2.1%	4849	0.5%	54844	54546	0.5%
VIOLENT PROPERTY	650	13.3%	730	-11.0%	665	-2.3%	7934	7271	9.1%
PROPERTY	4222	86.7%	4041	4.5%	4184	0.9%	46910	47275	-0.8%

NOTE: These totals include offenses reported to the Charlotte-Mecklenburg Police Department in accordance with the Uniform Crime Reporting Program. Totals for homicide do not include cases investigated by the police but classed by UCR guidelines as negligent manslaughter or as "justifiable homicide."



INDEX CLEARANCES REPORTED BY THE CHARLOTTE-MECKLENBURG POLICE DEPARTMENT

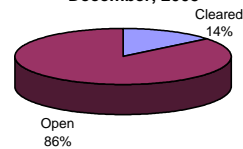
December, 2005 INDEX CLEARANCES	THIS MONTH:		LAST MONTH:		SAME MO. LAST YR:		THIS YEAR TO DATE:		LAST YEAR TO DATE:	
	NO.	%	NO.	%	NO.	%	NO.	%	NO.	%
MURDER & NON-NEGLIGENT MANSLAUGHTER ¹	17	242.9%	5	71.4%	8	133.3%	63	74.1%	45	75.0%
RAPE TOTAL	16	100.0%	30	100.0%	22	137.5%	267	82.4%	192	62.5%
ACTUAL	15	100.0%	29	103.6%	19	146.2%	232	75.8%	173	62.5%
ATTEMPT	1	100.0%	1	50.0%	3	100.0%	19	105.6%	19	63.3%
ROBBERY TOTAL	57	15.0%	62	17.6%	81	26.0%	751	20.6%	681	24.4%
ARMED	49	15.4%	45	15.0%	63	25.5%	587	19.5%	495	23.5%
STRONG-ARM	8	12.9%	17	32.7%	18	28.1%	164	25.8%	186	27.4%
AGGRAVATED ASSAULT TOTAL	142	57.5%	169	49.7%	123	37.0%	1953	50.4%	2056	49.9%
BURGLARY TOTAL	123	9.2%	84	6.6%	104	9.6%	1471	11.5%	1298	10.8%
RESIDENTIAL	68	8.2%	57	7.7%	86	11.9%	1011	12.3%	1050	12.4%
COMMERCIAL	55	11.0%	27	5.2%	18	5.0%	470	10.2%	248	6.9%
LARCENY TOTAL	357	16.0%	340	15.5%	326	13.8%	3928	14.7%	3805	13.5%
FROM AUTO	26	2.2%	23	2.1%	29	2.3%	470	3.5%	428	2.9%
BICYCLE	0	0.0%	2	13.3%	1	5.0%	33	14.3%	19	7.7%
SHOPLIFTING	184	77.6%	194	74.3%	164	66.7%	1820	69.1%	1832	63.9%
OTHERS	147	18.7%	121	14.8%	132	15.5%	1605	15.5%	1526	14.5%
VEHICLE THEFT TOTAL	72	11.4%	93	17.3%	142	20.2%	1111	15.7%	1206	17.8%
ARSON TOTAL	16	59.3%	2	4.5%	13	50.0%	79	24.6%	94	27.0%
TOTALS	800	16.4%	785	16.5%	819	16.9%	9623	17.5%	9377	17.2%
VIOLENT PROPERTY	232	35.7%	266	36.4%	234	35.2%	3034	38.2%	2974	40.9%
	568	13.5%	519	12.8%	585	14.0%	6589	14.0%	6403	13.5%

¹NOTE : Clearances are reported in accordance with Uniform Crime Report guidelines. Since clearances are not counted for UCR until they are entered in the Records Management system, any delays in entry of the documentation may result in some clearances being reported later in succeeding months. Clearances for homicides from years prior to the automated KBCOPS Records and Case Management modules were counted in the December clearances.

**Year-to-Date Violent Index Clearance Rate
Charlotte-Mecklenburg Police Department: 2004
December, 2005**

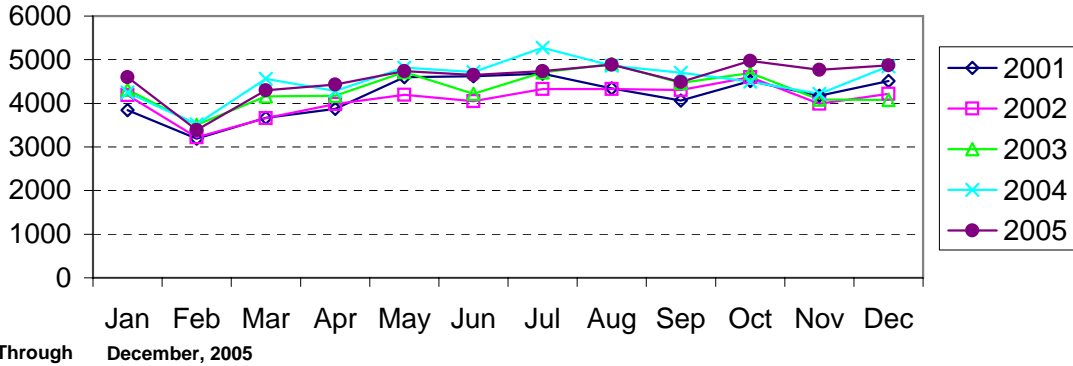


**Year-to-Date Property Index Clearance Rate
Charlotte-Mecklenburg Police Department: 2004
December, 2005**

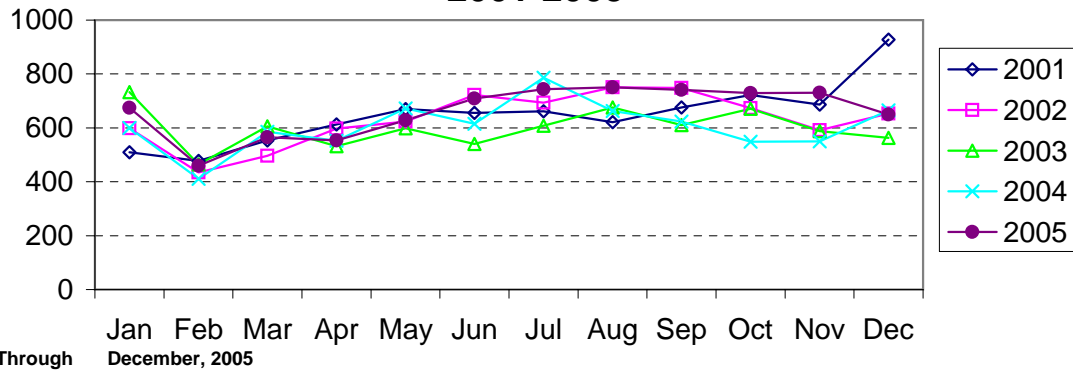


Clearance rates for crime reporting are calculated by dividing the number of crimes cleared during a designated time span by the number of crimes reported in the same period and converting the result to a percentage (multiplying by 100). Since cases from previous reporting periods can be cleared during the designated time span, the rate may be higher than 100%.

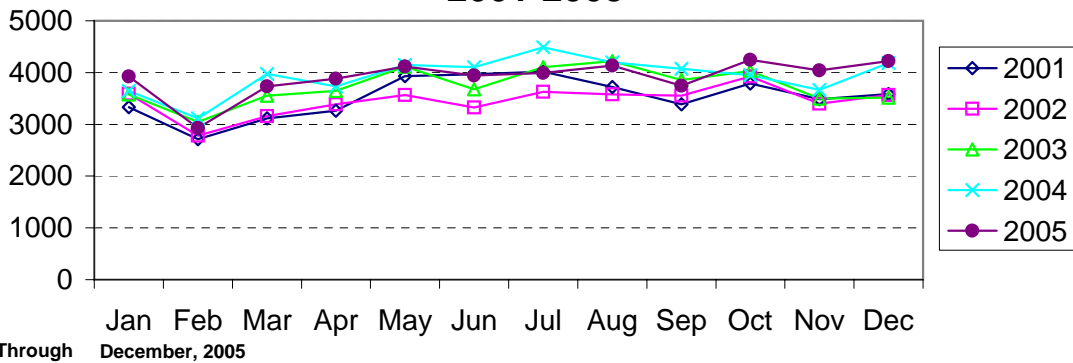
Index Offenses Reported by Month Charlotte-Mecklenburg Police Department: 2001-2005



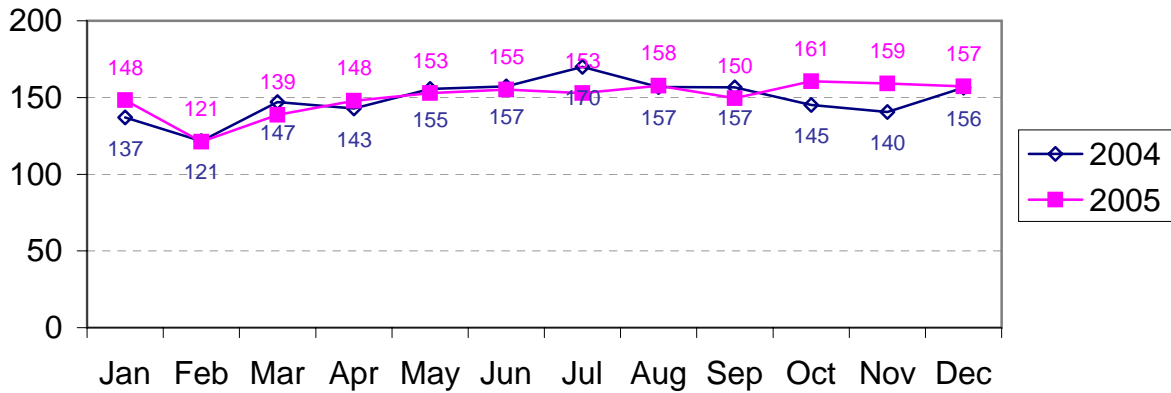
Violent Index Offenses Reported by Month Charlotte-Mecklenburg Police Department: 2001-2005



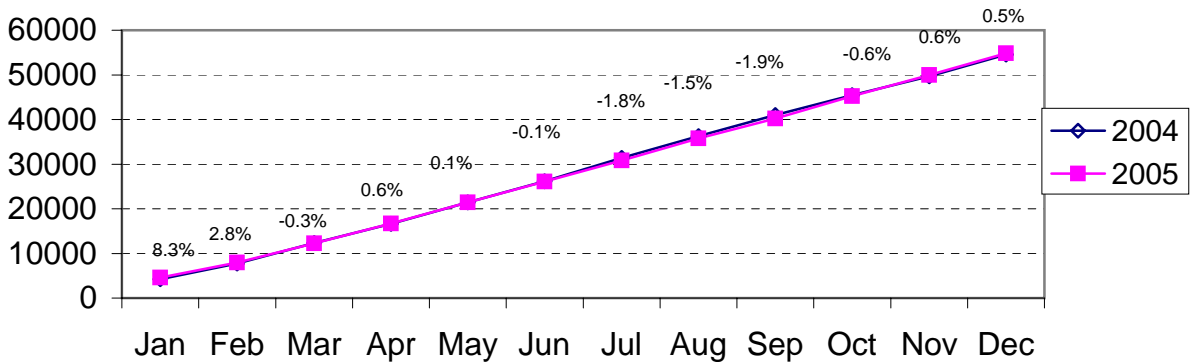
Property Index Offenses Reported by Month Charlotte-Mecklenburg Police Department: 2001-2005



Index Offense Per Day Average by Month Charlotte-Mecklenburg Police Department: 2004-2005

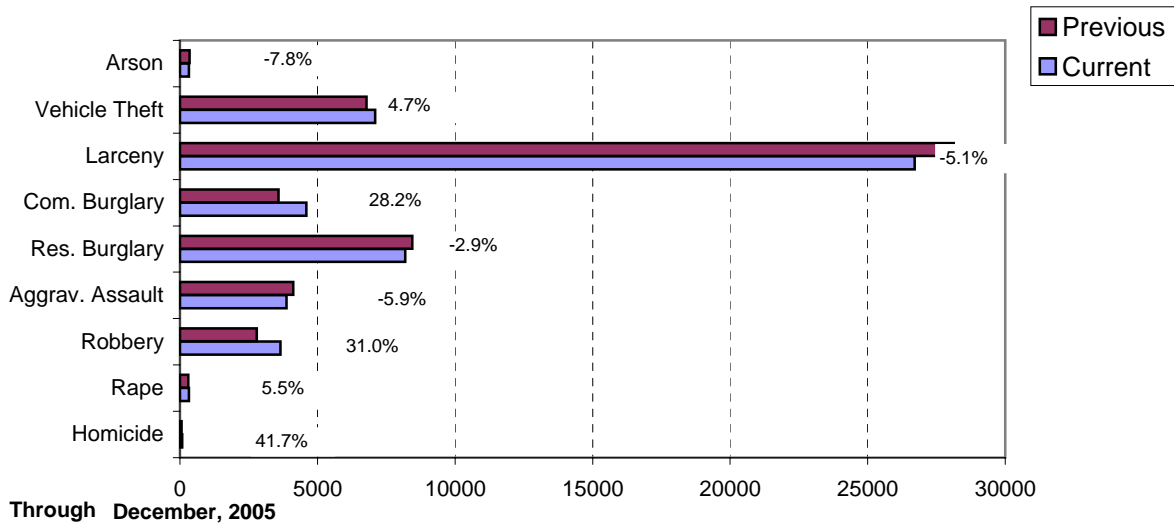


Index Offenses Year-to-Date Cumulative Totals Charlotte-Mecklenburg Police Department: 2004-2005

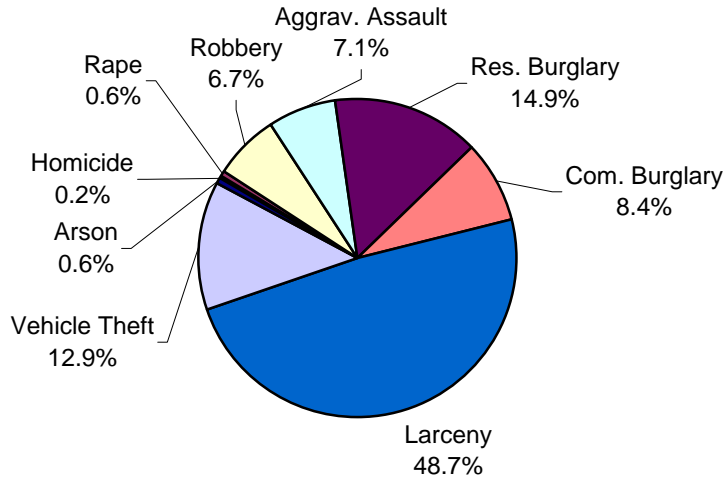


Through December, 2005

Index Offenses in Current and Previous 12 Months Charlotte-Mecklenburg Police Department

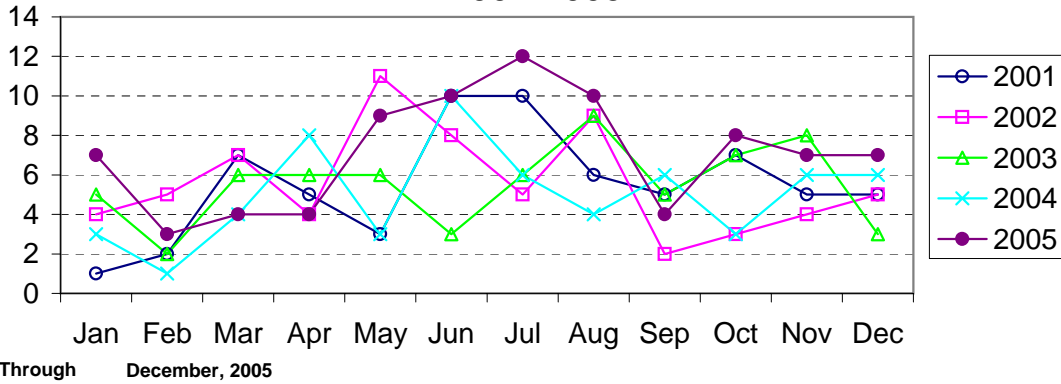


Year-to-Date Index Offenses by Type Charlotte-Mecklenburg Police Department: 2005

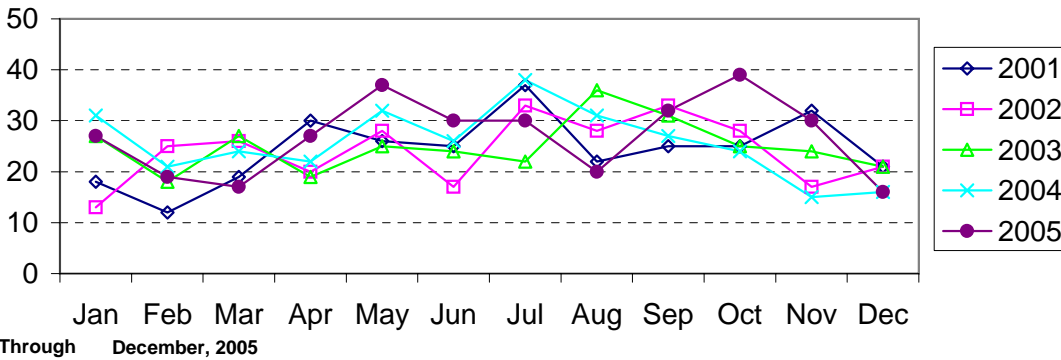


Through December,

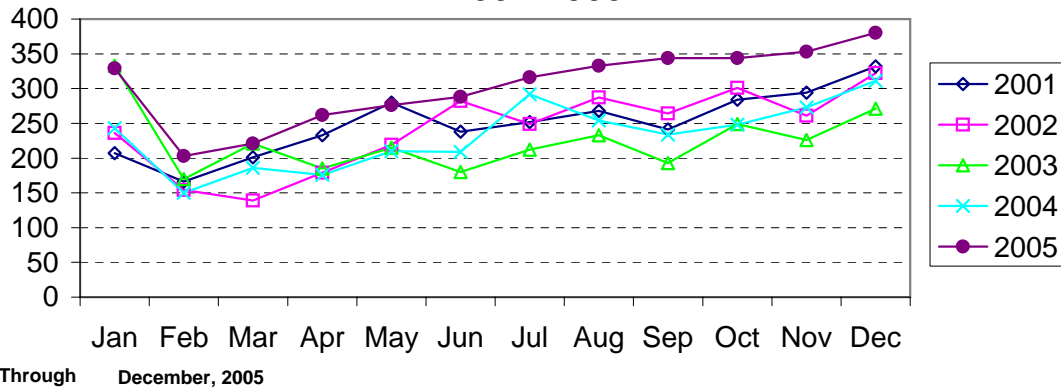
Homicide Reported by Month Charlotte-Mecklenburg Police Department: 2001-2005



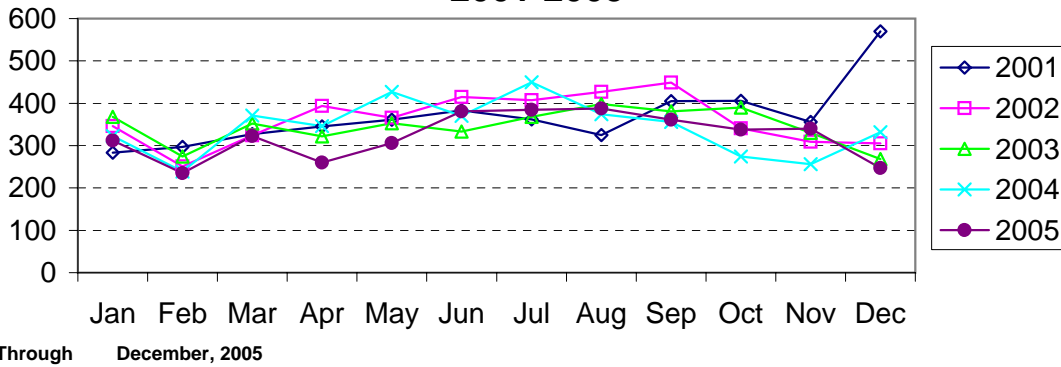
Rape Reported by Month Charlotte-Mecklenburg Police Department: 2001-2005



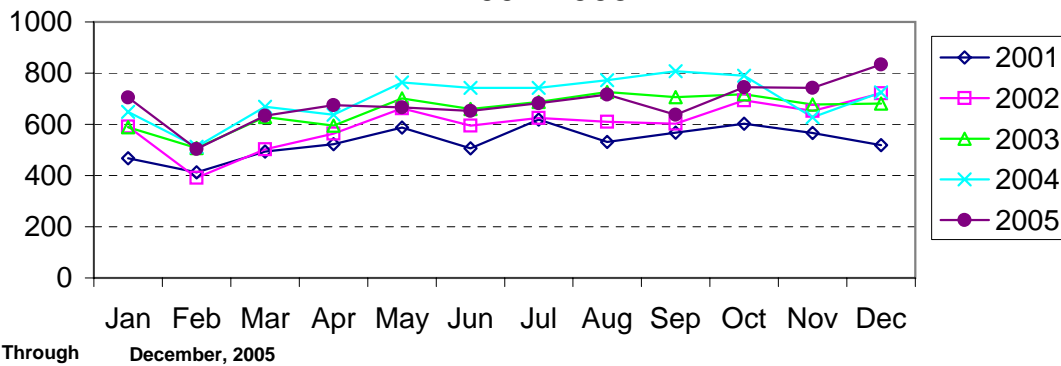
Robbery Reported by Month Charlotte-Mecklenburg Police Department: 2001-2005



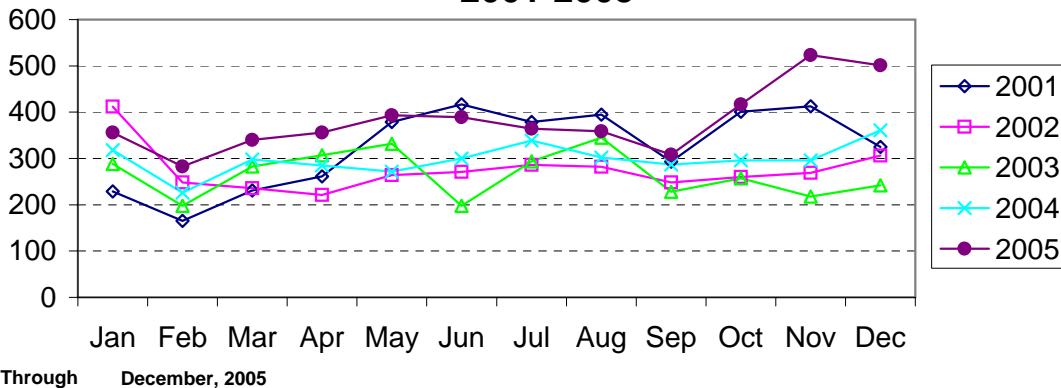
Aggravated Assault Reported by Month Charlotte-Mecklenburg Police Department: 2001-2005



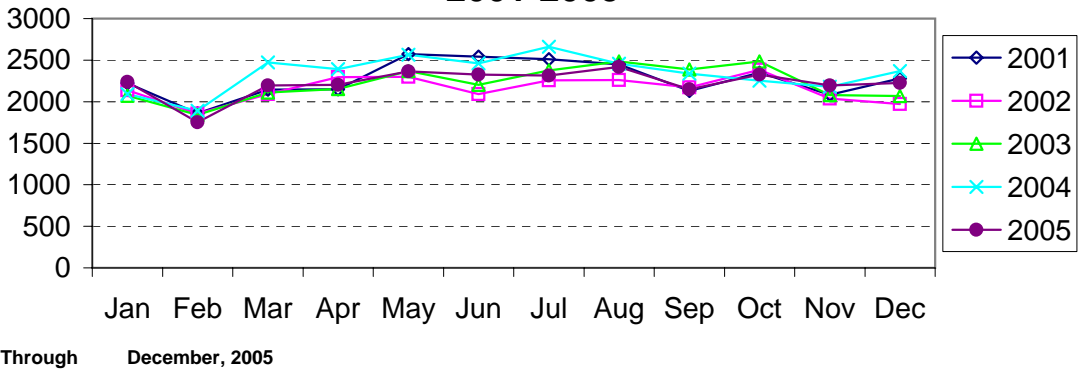
Residential Burglary Reported by Month Charlotte-Mecklenburg Police Department: 2001-2005



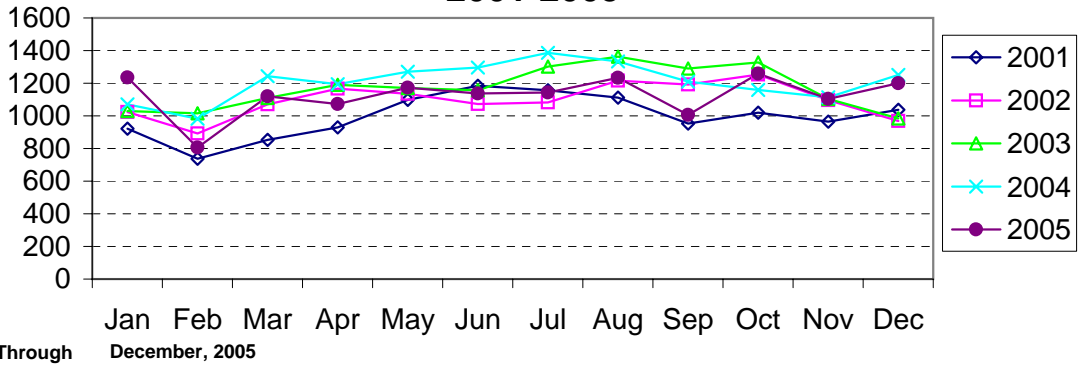
Commercial Burglary Reported by Month Charlotte-Mecklenburg Police Department: 2001-2005



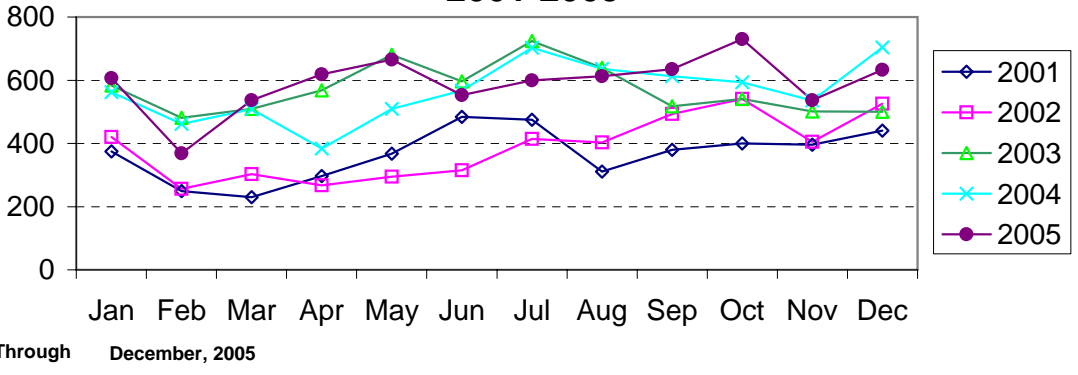
Larceny Reported by Month Charlotte-Mecklenburg Police Department: 2001-2005



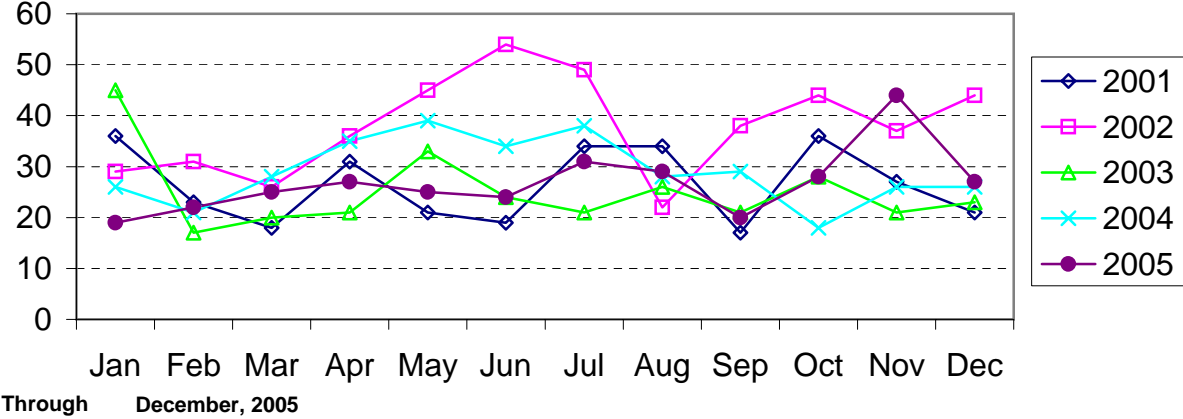
Larceny from Vehicle Reported by Month Charlotte-Mecklenburg Police Department: 2001-2005



Vehicle Theft Reported by Month Charlotte-Mecklenburg Police Department: 2001-2005



Arson Reported by Month Charlotte-Mecklenburg Police Department: 2001-2005



Index Offenses Reported by Division and Service Area of Occurrence									
West Service Area: Jan-Dec, 2004-2005									
INDEX_CATEGORIES	Westover (A2)			Freedom (A3)			West Service Area		
	2004	2005	% Change	2004	2005	% Change	2004	2005	% Change
MURDER & NON-NEGLIGENT MANSLAUGHTER	1	6	500.0%	5	13	160.0%	6	19	216.7%
RAPE	24	22	-8.3%	34	37	8.8%	58	59	1.7%
ACTUAL	24	21	-12.5%	33	34	3.0%	57	55	-3.5%
ATTEMPTED	0	1	NA	1	3	200.0%	1	4	300.0%
ROBBERY	221	323	46.2%	307	478	55.7%	528	801	51.7%
ARMED	172	264	53.5%	236	418	77.1%	408	682	67.2%
STRONG-ARM	49	59	20.4%	71	60	-15.5%	120	119	-0.8%
AGGRAVATED ASSAULT	353	455	28.9%	486	464	-4.5%	839	919	9.5%
BURGLARY	895	1088	21.6%	1643	1668	1.5%	2538	2756	8.6%
RESIDENTIAL	600	613	2.2%	1086	1020	-6.1%	1686	1633	-3.1%
COMMERCIAL	295	475	61.0%	557	648	16.3%	852	1123	31.8%
LARCENY	1784	1692	-5.2%	2650	2482	-6.3%	4434	4174	-5.9%
FROM AUTO	925	815	-11.9%	1264	1077	-14.8%	2189	1892	-13.6%
BICYCLE	13	21	61.5%	17	45	164.7%	30	66	120.0%
SHOPLIFTING	131	119	-9.2%	265	250	-5.7%	396	369	-6.8%
OTHERS	715	737	3.1%	1104	1110	0.5%	1819	1847	1.5%
VEHICLE THEFT	492	526	6.9%	697	718	3.0%	1189	1244	4.6%
ARSON	27	30	11.1%	42	48	14.3%	69	78	13.0%
TOTALS	3797	4142	9.1%	5864	5908	0.8%	9661	10050	4.0%
VIOLENT	599	806	34.6%	832	992	19.2%	1431	1798	25.6%
PROPERTY	3198	3336	4.3%	5032	4916	-2.3%	8230	8252	0.3%

Index Offenses Reported by Division and Service Area of Occurrence									
Southeast Service Area: Jan-Dec, 2004-2005									
INDEX_CATEGORIES	Providence (B1)			Independence (B3)			Southeast Service Area		
	2004	2005	% Change	2004	2005	% Change	2004	2005	% Change
MURDER & NON-NEGLIGENT MANSLAUGHTER	4	4	0.0%	6	4	-33.3%	10	8	-20.0%
RAPE	13	17	30.8%	25	27	8.0%	38	44	15.8%
ACTUAL	12	16	33.3%	22	25	13.6%	34	41	20.6%
ATTEMPTED	1	1	0.0%	3	2	-33.3%	4	3	-25.0%
ROBBERY	136	126	-7.4%	245	316	29.0%	381	442	16.0%
ARMED	97	100	3.1%	183	271	48.1%	280	371	32.5%
STRONG-ARM	39	26	-33.3%	62	45	-27.4%	101	71	-29.7%
AGGRAVATED ASSAULT	169	128	-24.3%	328	294	-10.4%	497	422	-15.1%
BURGLARY	826	996	20.6%	1086	980	-9.8%	1912	1976	3.3%
RESIDENTIAL	516	622	20.5%	850	726	-14.6%	1366	1348	-1.3%
COMMERCIAL	310	374	20.6%	236	254	7.6%	546	628	15.0%
LARCENY	1982	1957	-1.3%	2328	2338	0.4%	4310	4295	-0.3%
FROM AUTO	914	915	0.1%	1311	1241	-5.3%	2225	2156	-3.1%
BICYCLE	18	22	22.2%	23	18	-21.7%	41	40	-2.4%
SHOPLIFTING	207	247	19.3%	199	270	35.7%	406	517	27.3%
OTHERS	843	773	-8.3%	795	809	1.8%	1638	1582	-3.4%
VEHICLE THEFT	394	316	-19.8%	683	737	7.9%	1077	1053	-2.2%
ARSON	17	12	-29.4%	33	29	-12.1%	50	41	-18.0%
TOTALS	3541	3556	0.4%	4734	4725	-0.2%	8275	8281	0.1%
VIOLENT	322	275	-14.6%	604	641	6.1%	926	916	-1.1%
PROPERTY	3219	3281	1.9%	4130	4084	-1.1%	7349	7365	0.2%

The data in the district breakdowns does not include a small number of offenses in which the offense location (or reporting location if offense location was unknown) was entered without one of the 12 valid division assignments. Districts are not equal in geographic size, demographics, zoning/development, and other factors that influence the rate of crimes committed in an area. Therefore, the comparison of raw offense totals across districts is **not** advisable.

Index Offenses Reported by Division and Service Area of Occurrence									
Northeast Service Area: Jan-Dec, 2004-2005									
INDEX_CATEGORIES	North (C1)			Hickory Grove (C3)			Northeast Service Area		
	2004	2005	% Change	2004	2005	% Change	2004	2005	% Change
MURDER & NON-NEGLIGENT MANSLAUGHTER	6	11	83.3%	4	11	175.0%	10	22	120.0%
RAPE	39	40	2.6%	35	39	11.4%	74	79	6.8%
ACTUAL	37	36	-2.7%	29	36	24.1%	66	72	9.1%
ATTEMPTED	2	4	100.0%	6	3	-50.0%	8	7	-12.5%
ROBBERY	259	285	10.0%	236	368	55.9%	495	653	31.9%
ARMED	202	242	19.8%	196	303	54.6%	398	545	36.9%
STRONG-ARM	57	43	-24.6%	40	62	55.0%	97	105	8.2%
AGGRAVATED ASSAULT	349	367	5.2%	433	418	-3.5%	782	785	0.4%
BURGLARY	1614	1575	-2.4%	1215	1610	32.5%	2829	3185	12.6%
RESIDENTIAL	1130	1048	-7.3%	950	1055	11.1%	2080	2103	1.1%
COMMERCIAL*	484	527	8.9%	261	555	112.6%	745	1082	45.2%
LARCENY	4206	4567	8.6%	2116	2019	-4.6%	6322	6586	4.2%
FROM AUTO	2376	2527	6.4%	1065	1095	2.8%	3441	3622	5.3%
BICYCLE	22	28	27.3%	44	33	-25.0%	66	61	-7.6%
SHOPLIFTING	355	411	15.8%	147	165	12.2%	502	576	14.7%
OTHERS	1453	1601	10.2%	860	726	-15.6%	2313	2327	0.6%
VEHICLE THEFT	872	988	13.3%	721	775	7.5%	1593	1763	10.7%
ARSON	44	42	-4.5%	44	34	-22.7%	88	76	-13.6%
TOTALS	7389	7875	6.6%	4804	5274	9.8%	12193	13149	7.8%
VIOLENT PROPERTY	653 6736	703 7172	7.7% 6.5%	708 4096	836 4438	18.1% 8.3%	1361 10832	1539 11610	13.1% 7.2%

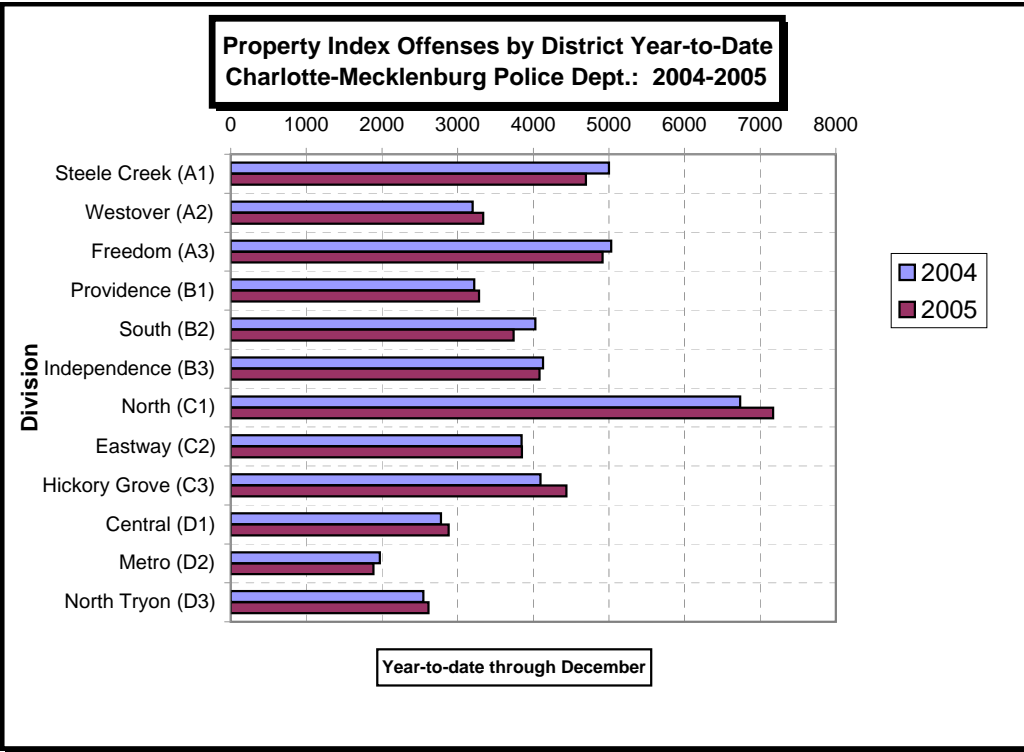
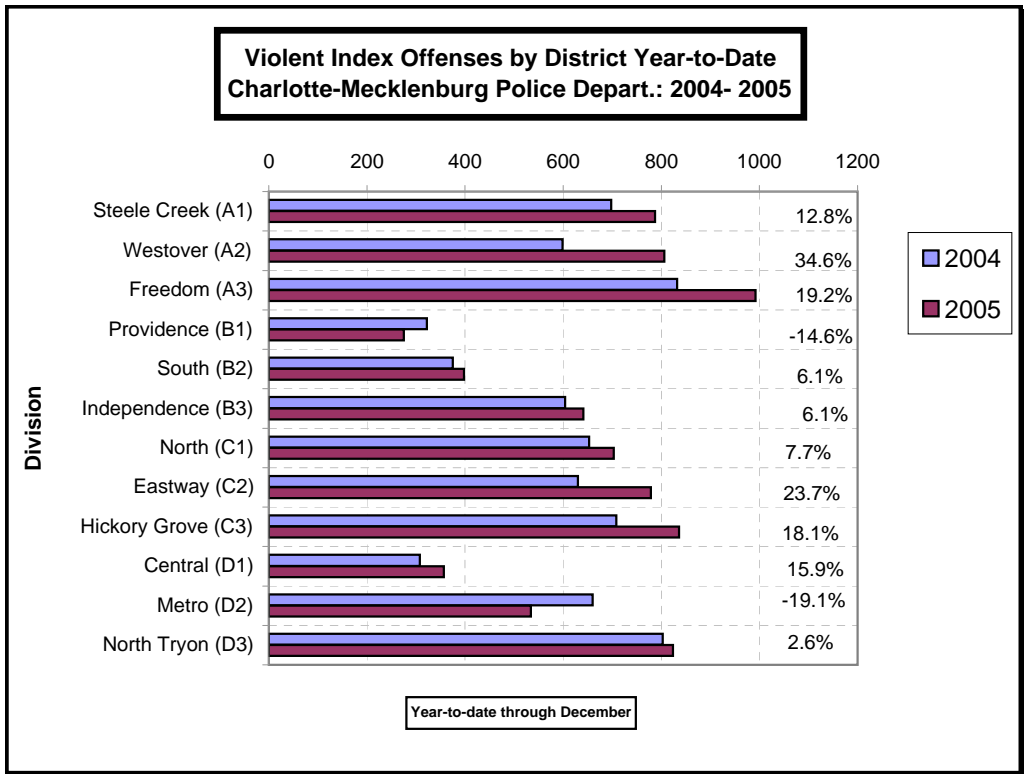
Index Offenses Reported by Division and Service Area of Occurrence									
Central Service Area: Jan-Dec, 2004-2005									
INDEX_CATEGORIES	Central (D1)			Metro (D2)			Central Service Area		
	2004	2005	% Change	2004	2005	% Change	2004	2005	% Change
MURDER & NON-NEGLIGENT MANSLAUGHTER	1	4	300.0%	8	7	-12.5%	9	11	22.2%
RAPE	18	36	100.0%	23	17	-26.1%	41	53	29.3%
ACTUAL	17	35	105.9%	22	18	-18.2%	39	53	35.9%
ATTEMPTED	1	1	0.0%	1	-1	-200.0%	2	0	-100.0%
ROBBERY	132	180	36.4%	213	202	-5.2%	345	382	10.7%
ARMED	78	113	44.9%	164	160	-2.4%	242	273	12.8%
STRONG-ARM	54	67	24.1%	49	42	-14.3%	103	109	5.8%
AGGRAVATED ASSAULT	157	137	-12.7%	416	308	-26.0%	573	445	-22.3%
BURGLARY	396	415	4.8%	674	593	-12.0%	1070	1008	-5.8%
RESIDENTIAL	174	137	-21.3%	494	436	-11.7%	668	573	-14.2%
COMMERCIAL	222	278	25.2%	180	157	-12.8%	402	435	8.2%
LARCENY	2036	2057	1.0%	960	905	-5.7%	2996	2962	-1.1%
FROM AUTO	1121	1100	-1.9%	432	419	-3.0%	1553	1519	-2.2%
BICYCLE	22	34	54.5%	10	10	0.0%	32	44	37.5%
SHOPLIFTING	76	72	-5.3%	62	28	-54.8%	138	100	-27.5%
OTHERS	818	851	4.0%	457	448	-2.0%	1275	1299	1.9%
VEHICLE THEFT	340	408	20.0%	322	367	14.0%	662	775	17.1%
ARSON	7	2	-71.4%	15	22	46.7%	22	24	9.1%
TOTALS	3087	3239	4.9%	2631	2421	-8.0%	5718	5660	-1.0%
VIOLENT PROPERTY	308 2779	357 2882	15.9% 3.7%	660 1971	534 1887	-19.1% -4.3%	968 4750	891 4769	-8.0% 0.4%

*The Commercial Burglary total in the Hickory Grove Division in 2005 includes incidents at mini-storage businesses where 50 and 65 units were entered or attempted; UCR requires counting each unit as a burglary. Districts are not equal in geographic size, demographics, zoning/development, and other factors that influence the rate of crimes committed in an area. Therefore, the comparison of raw offense totals across districts is not advisable.

Index Offenses Reported by Division and Service Area of Occurrence									
East Service Area: Jan-Dec, 2004-2005									
INDEX_CATEGORIES	Eastway (C2)			North Tryon (D3)			East Service Area		
	2004	2005	% Change	2004	2005	% Change	2004	2005	% Change
MURDER & NON-NEGLIGENT MANSLAUGHTER	6	8	33.3%	11	8	-27.3%	17	16	-5.9%
RAPE	21	25	19.0%	21	10	-52.4%	42	35	-16.7%
ACTUAL	17	24	41.2%	17	9	-47.1%	34	33	-2.9%
ATTEMPTED	4	1	-75.0%	4	1	-75.0%	8	2	-75.0%
ROBBERY	308	472	53.2%	304	361	18.8%	612	833	36.1%
ARMED	230	387	68.3%	226	299	32.3%	456	686	50.4%
STRONG-ARM	78	85	9.0%	78	62	-20.5%	156	147	-5.8%
AGGRAVATED ASSAULT	295	274	-7.1%	467	445	-4.7%	762	719	-5.6%
BURGLARY	990	1110	12.1%	752	887	18.0%	1742	1997	14.6%
RESIDENTIAL	742	809	9.0%	500	528	5.6%	1242	1337	7.6%
COMMERCIAL	248	301	21.4%	252	362	43.7%	500	663	32.6%
LARCENY	2287	2184	-4.5%	1315	1246	-5.2%	3602	3430	-4.8%
FROM AUTO	823	852	3.5%	633	612	-3.3%	1456	1464	0.5%
BICYCLE	28	24	-14.3%	9	7	-22.2%	37	31	-16.2%
SHOPLIFTING	754	510	-32.4%	98	67	-31.6%	852	577	-32.3%
OTHERS	682	798	17.0%	575	560	-2.6%	1257	1358	8.0%
VEHICLE THEFT	541	535	-1.1%	465	468	0.6%	1006	1003	-0.3%
ARSON	28	22	-21.4%	14	12	-14.3%	42	34	-19.0%
TOTALS	4476	4630	3.4%	3349	3437	2.6%	7825	8067	3.1%
VIOLENT	630	779	23.7%	803	824	2.6%	1433	1603	11.9%
PROPERTY	3846	3851	0.1%	2546	2613	2.6%	6392	6464	1.1%

Index Offenses Reported by Division and Service Area of Occurrence									
South Service Area: Jan-Dec, 2004-2005									
INDEX_CATEGORIES	Steele Creek (A1)			South (B2)			South Service Area		
	2004	2005	% Change	2004	2005	% Change	2004	2005	% Change
MURDER & NON-NEGLIGENT MANSLAUGHTER	7	9	28.6%	1	0	-100.0%	8	9	12.5%
RAPE	26	35	34.6%	16	17	6.3%	42	52	23.8%
ACTUAL	22	33	50.0%	13	17	30.8%	35	50	42.9%
ATTEMPTED	4	2	-50.0%	3	0	-100.0%	7	2	-71.4%
ROBBERY	259	338	30.5%	140	200	42.9%	399	538	34.8%
ARMED	202	285	41.1%	101	171	69.3%	303	456	50.5%
STRONG-ARM	57	53	-7.0%	39	29	-25.6%	96	82	-14.6%
AGGRAVATED ASSAULT	406	405	-0.2%	218	181	-17.0%	624	586	-6.1%
BURGLARY	992	951	-4.1%	863	906	5.0%	1855	1857	0.1%
RESIDENTIAL	626	573	-8.5%	673	626	-7.0%	1299	1199	-7.7%
COMMERCIAL	366	378	3.3%	190	280	47.4%	556	658	18.3%
LARCENY	3319	2919	-12.1%	2642	2338	-11.5%	5961	5257	-11.8%
FROM AUTO	1880	1553	-17.4%	1500	1279	-14.7%	3380	2832	-16.2%
BICYCLE	25	16	-36.0%	16	14	-12.5%	41	30	-26.8%
SHOPLIFTING	403	270	-33.0%	151	183	21.2%	554	453	-18.2%
OTHERS	1011	1080	6.8%	975	862	-11.6%	1986	1942	-2.2%
VEHICLE THEFT	647	796	23.0%	492	460	-6.5%	1139	1256	10.3%
ARSON	41	32	-22.0%	32	35	9.4%	73	67	-8.2%
TOTALS	5697	5485	-3.7%	4404	4137	-6.1%	10101	9622	-4.7%
VIOLENT	698	787	12.8%	375	398	6.1%	1073	1185	10.4%
PROPERTY	4999	4698	-6.0%	4029	3739	-7.2%	9028	8437	-6.5%

The data in the district breakdowns does not include a small number of offenses in which the offense location (or reporting location if offense location was unknown) was entered without one of the 12 valid division assignments. Districts are not equal in geographic size, demographics, zoning/development, and other factors that influence the rate of crimes committed in an area. Therefore, the comparison of raw offense totals across districts is **not** advisable.



The data in the district breakdowns does not include a small number of offenses in which the offense location (or reporting location if offense location was unknown) was entered without one of the 12 valid division assignments. Districts are not equal in geographic size, demographics, zoning/development, and other factors that influence the rate of crimes committed in an area. Therefore, the comparison of raw offense totals across districts is **not** advisable.

Arrests by Charlotte-Mecklenburg Police Department
Year-To-Date: 2004-2005
(Through December)

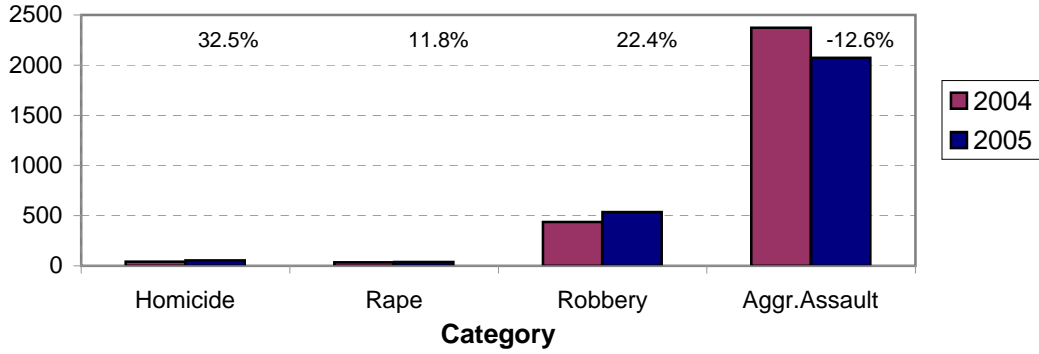
CATEGORY	ADULTS (AGE 18 & OLDER):			JUVENILES (UNDER 18):			TOTAL ARRESTS:		
	2004 Y-T-D	2005 Y-T-D	% CHANGE	2004 Y-T-D	2005 Y-T-D	% CHANGE	2004 Y-T-D	2005 Y-T-D	% CHANGE
Murder/Non-Negligent Manslaughter	37	50	35.1%	3	3	0.0%	40	53	32.5%
Negligent & Vehicular Manslaughter	4	3	-25.0%	0	0	NA	4	3	-25.0%
Rape	32	36	12.5%	2	2	0.0%	34	38	11.8%
Robbery	297	411	38.4%	141	125	-11.3%	438	536	22.4%
Aggravated Assault	2055	1791	-12.8%	318	282	-11.3%	2373	2073	-12.6%
Burglary	582	611	5.0%	215	250	16.3%	797	861	8.0%
Larceny	1586	1567	-1.2%	596	541	-9.2%	2182	2108	-3.4%
Vehicle Theft	75	94	25.3%	152	111	-27.0%	227	205	-9.7%
Non-Aggravated Assault	1822	2004	10.0%	801	737	-8.0%	2623	2741	4.5%
Arson	16	14	-12.5%	36	26	-27.8%	52	40	-23.1%
Forgery/Counterfiet	143	155	8.4%	2	3	50.0%	145	158	9.0%
Fraud	551	614	11.4%	9	6	-33.3%	560	620	10.7%
Embezzlement	93	98	5.4%	13	14	7.7%	106	112	5.7%
Stolen Property	527	528	0.2%	104	145	39.4%	631	673	6.7%
Vandalism	226	227	0.4%	200	230	15.0%	426	457	7.3%
Weapons	437	615	40.7%	60	64	6.7%	497	679	36.6%
Prostitution	363	309	-14.9%	8	2	-75.0%	371	311	-16.2%
Sex Offenses	193	171	-11.4%	18	30	66.7%	211	201	-4.7%
Drugs	2685	2697	0.4%	262	279	6.5%	2947	2976	1.0%
Gambling	20	8	-60.0%	0	0	NA	20	8	-60.0%
Offenses vs. Family	5	5	0.0%	1	0	-100.0%	6	5	-16.7%
DUI	1959	2066	5.5%	11	12	9.1%	1970	2078	5.5%
Liquor	211	210	-0.5%	10	11	10.0%	221	221	0.0%
Disorder.Conduct	573	521	-9.1%	302	307	1.7%	875	828	-5.4%
Other Non-Traffic	7943	7925	-0.2%	762	831	9.1%	8705	8756	0.6%
VIOLENT INDEX¹	2421	2288	-5.5%	464	412	-11.2%	2885	2700	-6.4%
PROPERTY INDEX²	2259	2286	1.2%	999	928	-7.1%	3258	3214	-1.4%
INDEX SUBTOTAL	4680	4574	-2.3%	1463	1340	-8.4%	6143	5914	-3.7%
PART 2 SUBTOTAL³	17755	18156	2.3%	2563	2671	4.2%	20318	20827	2.5%
TOTAL	22435	22730	1.3%	4026	4011	-0.4%	26461	26741	1.1%

¹Violent Index includes murder and non-negligent manslaughter, rape, robbery, and aggravated assault.

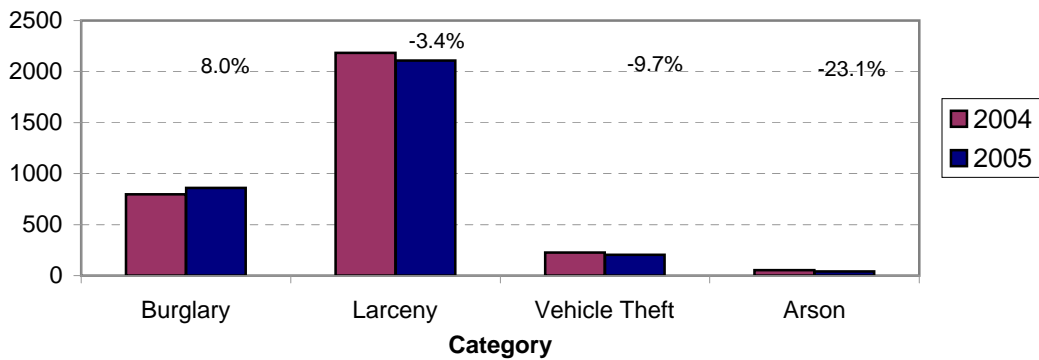
²Property Index includes burglary, larceny, vehicle theft, and arson.

³Part 2 crimes include crime categories not counted in the Index totals.

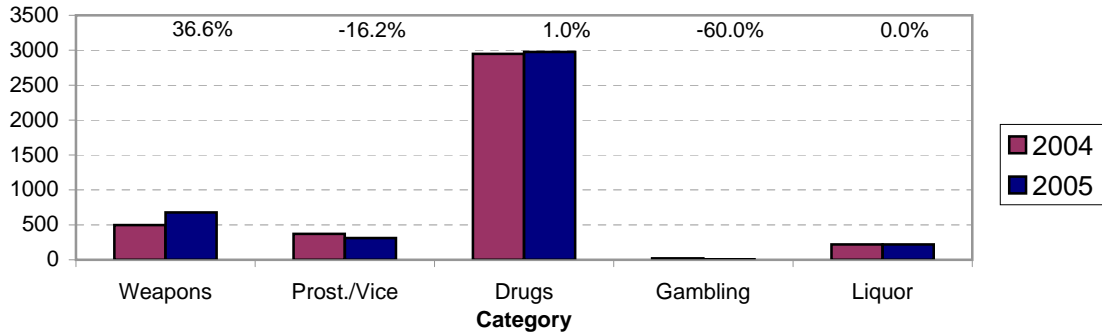
**Violent Index Arrests Year-to-Date
Charlotte-Mecklenburg Police Department: 2004-2005
(Through December)**



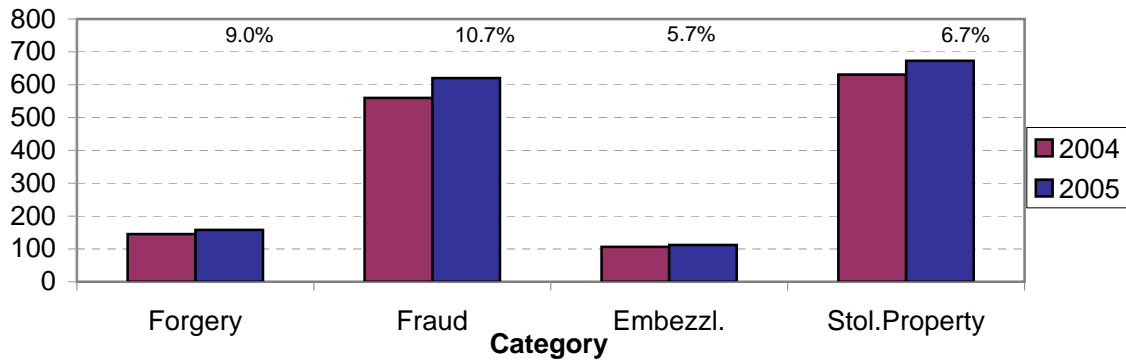
**Property Index Arrests Year-to-Date
Charlotte-Mecklenburg Police Department: 2004-2005
(Through December)**



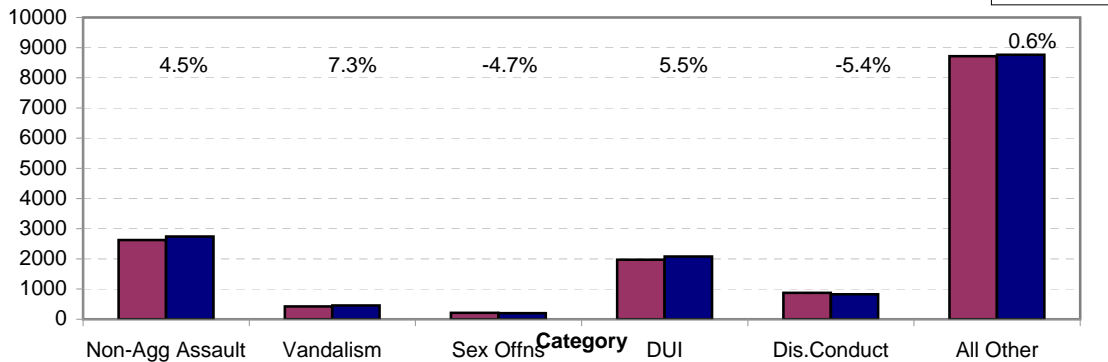
**Arrests for Vice/CCW/Drugs/Etc. Year-to-Date
Charlotte-Mecklenburg Police Department: 2004 - 2005
(Through December)**



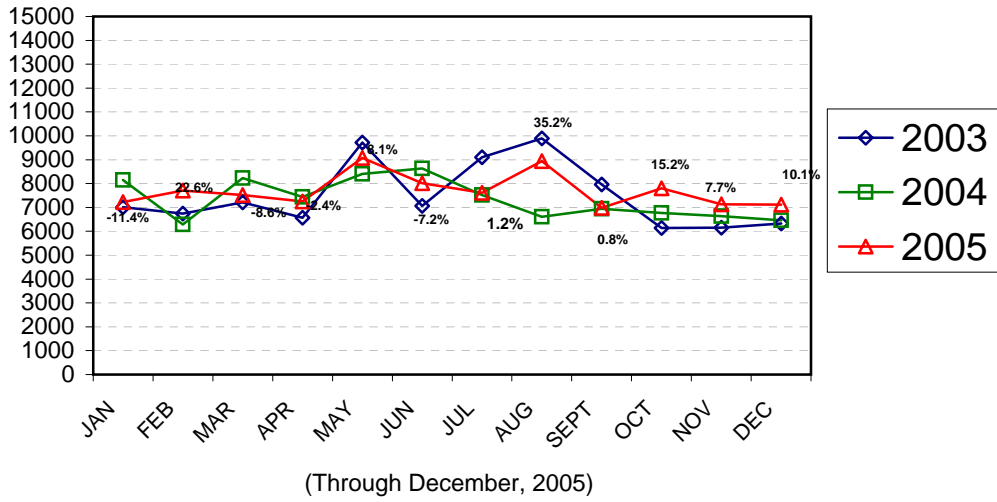
**Arrests for Property/White Collar Crime Year-to-Date
Charlotte-Mecklenburg Police Department: 2004- 2005
(Through December)**



**Arrests for Other Categories Year-to-Date
Charlotte-Mecklenburg Police Department: 2004 - 2005
(Through December)**

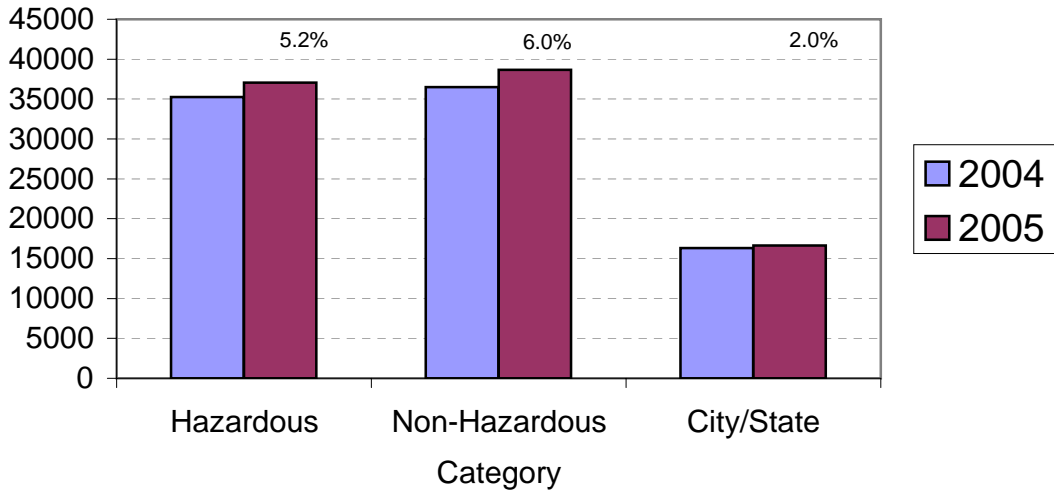


Total Citation Enforcement by Month Charlotte-Mecklenburg Police Dept.: 2003-2005

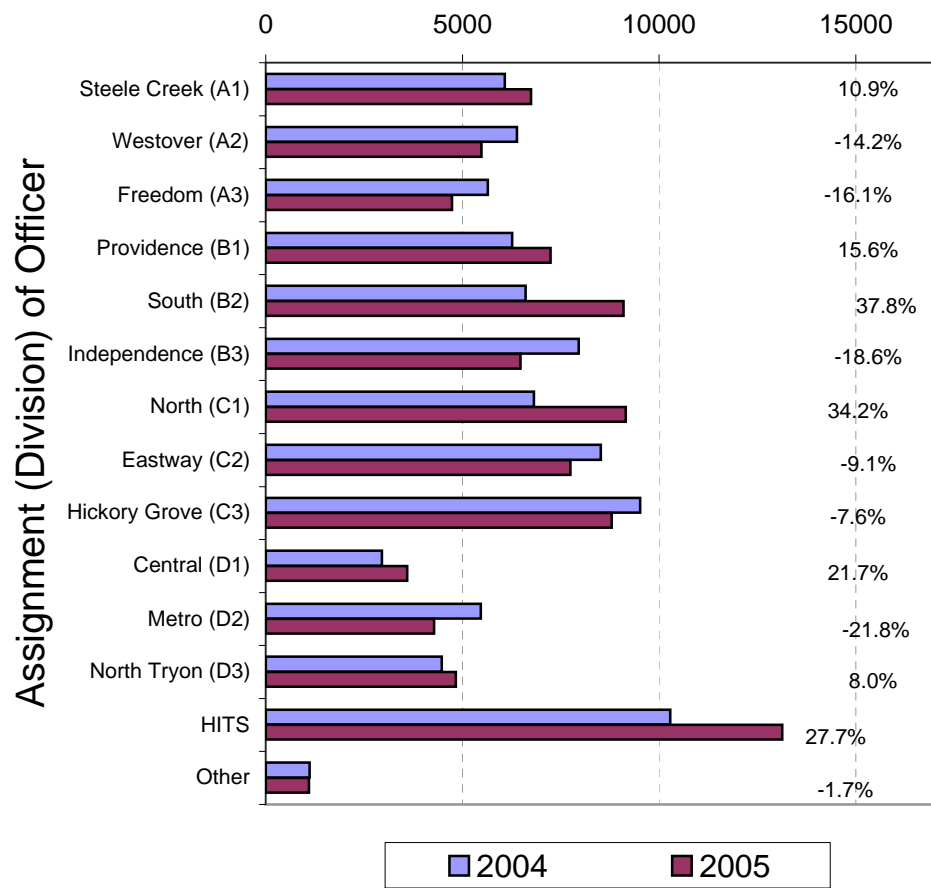


(Includes Hazardous, Non-Hazardous, and City/State Citations; percentages are current month compared to same month in previous year)

CMPD Citation Enforcement by Category Year-to-Date, 2004 - 2005 (Through December, 2005)



**Citations Issued Year-to-Date by CMPD Divisions
2004 - 2005
(Through December, 2005)**



Note: 2003 and 2004 data for HITS and Other was adjusted in April, 2004.

**Citations Issued by the Charlotte Mecklenburg Police Officers Year-to-Date
(Through December, 2005)**

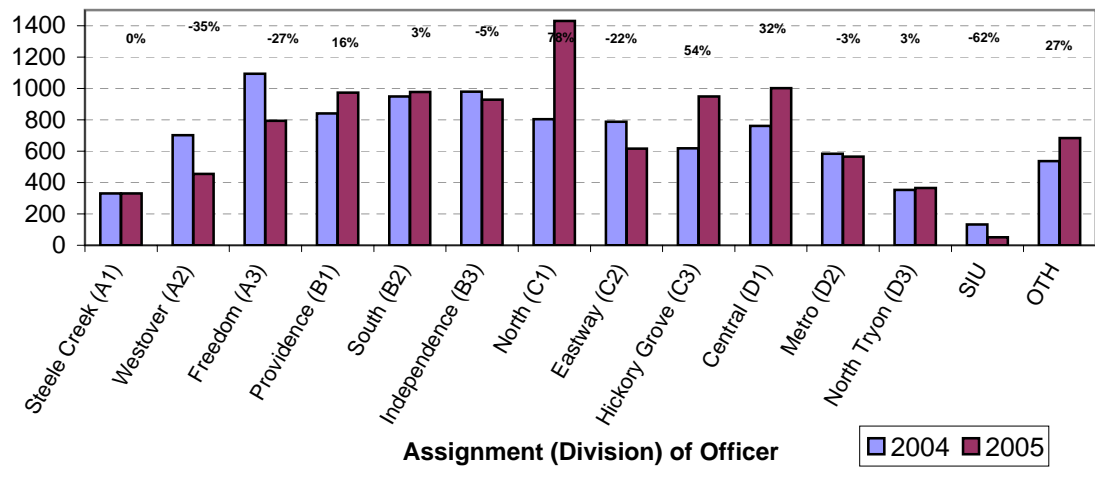
Total Citations	2004	2005	% Change
Hazardous	35,248	37,068	5.2%
Non-Hazardous	36,504	38,676	6.0%
Other City/State Statute/Ordinance	16,316	16,646	2.0%
Total	88,068	92,390	4.9%

**"Safe Speed" Program: 2005
(Through December, 2005)**

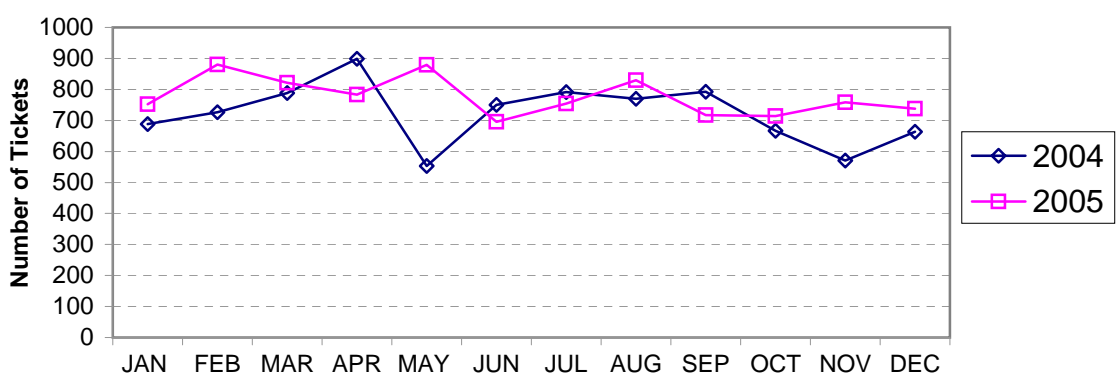
Total Citations	43027
-----------------	-------

(Citations issued through the "Safe Speed" program are not included in the CMPD citation totals used in the summary chart above or in the other citation charts.)

**Warning Ticket Violations Issued by CMPD Division
Year-to-Date, 2004 - 2005
Through December,**



**Total Warning Ticket Violations Issued by CMPD
By Month: 2004 - 2005**



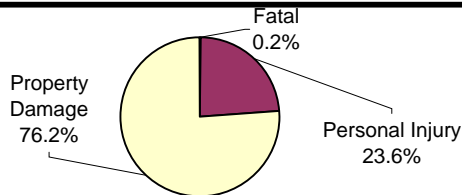
Warning Tickets Issued by CMPD Year-to-Date Through December, 2005			
	2004	2005	% Change
Total Warning Tickets	9473	10125	6.9%

**Traffic Collision Reports
Charlotte-Mecklenburg Police Department
Year-to-Date: 2004-2005
(Through December)**

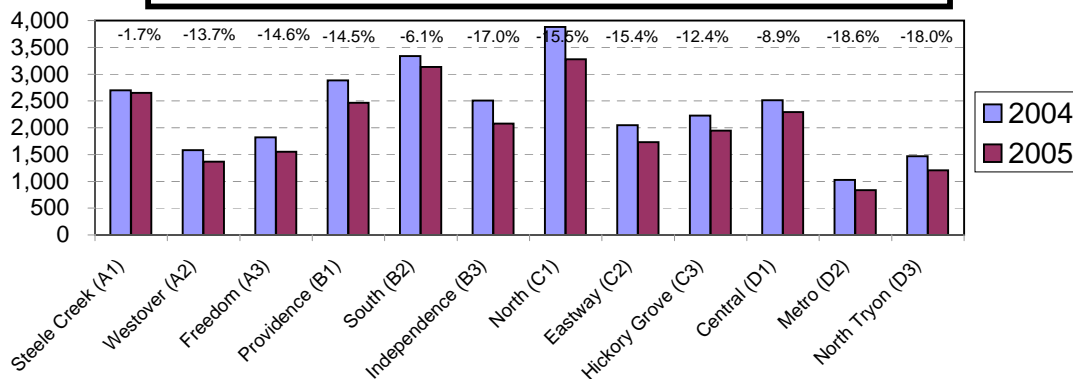
Type	2004	2005	% Change
Fatal Collisions	37	54	45.9%
Vehicle Occupants Killed	33	47	42.4%
Pedestrians Killed	6	8	33.3%
Personal Injury Collisions	6923	5822	-15.9%
Property Damage Collisions	21123	18763	-11.2%
Total Collisions	28083	24639	-12.3%

* The number of fatal collisions and the number of persons killed (fatalities) in those incidents is taken from the HITS file. Their records are updated for deaths that occur after the initial report is filed. Figures for 2004 were adjusted after publication of 2004 Annual Report.

**Traffic Collisions Reported by Type
Charlotte-Mecklenburg Police Department:
2005 Year-to-Date
(Through December)**



**Traffic Collisions Reported by Charlotte-Mecklenburg Police Dept.
Year-to-Date By Location (Division) : 2004 -2005
(Through December)**



**CITIZEN-INITIATED CALLS FOR SERVICE¹ BY TYPE
CHARLOTTE-MECKLENBURG POLICE DEPARTMENT**

<u>Type of Call²</u>	<u>2004 Year-to-Date</u>	<u>2005 Year-to-Date</u>	<u>Year-to-Date</u>
	<u>Jan through Dec</u>	<u>Jan through Dec</u>	<u>% Change</u>
ABC RELATED	2133	2250	5.5%
ACCIDENT	36338	35942	-1.1%
ALARM	33249	34547	3.9%
ANIMAL CONTROL	266	239	-10.2%
ASSAULT	4567	4349	-4.8%
ASSAULT WITH DEADLY WEAPON	1481	1733	17.0%
ASSIST OTHER AGENCY	7295	8091	10.9%
BOMB THREAT	136	120	-11.8%
BREAK/ENTER	18197	18628	2.4%
COMMUNICATING THREATS	3574	1935	-45.9%
COUNTY SECURITY ³	8	8	0.0%
CRIMINAL INTELLIGENCE	2	24	1100.0%
DAMAGE TO PROPERTY	7341	4026	-45.2%
DEATH	316	250	-20.9%
DISTURBANCE	25483	26567	4.3%
DOMESTIC INCIDENT	35223	36670	4.1%
DRUG RELATED	4321	3910	-9.5%
FIGHT	3264	3308	1.3%
FIRE	24	11	-54.2%
FIRE CASE	102	87	-14.7%
FRAUD/FORGERY	3339	1600	-52.1%
GAMBLING	29	16	-44.8%
HARASSMENT	1768	353	-80.0%
HIT AND RUN	7239	7606	5.1%
JUVENILE RELATED	1972	2236	13.4%
KIDNAPPING	194	209	7.7%
LAKE ENFORCEMENT	88	63	-28.4%
LARCENY	30744	10363	-66.3%
LOITERING	4202	4948	17.8%
MAJOR INCIDENT	21	25	19.0%
MISSING PERSON	7347	6135	-16.5%
NOISE COMPLAINT	13788	14320	3.9%
OFFENSE AGAINST FAMILY	7	13	85.7%
OFFICER CALLED IN	759	717	-5.5%
OVERDOSE	347	404	16.4%
PORNOGRAPHY	8	5	-37.5%
PROPERTY	3881	3856	-0.6%
PROSTITUTION	975	1242	27.4%
PUBLIC SERVICE	19141	22935	19.8%
QUALITY OF LIFE	1304	1889	44.9%
ROBBERY	2960	3849	30.0%
SEX CRIME	1168	1175	0.6%
SPECIAL SERVICE REQUEST	8	10	25.0%
SUICIDE	1202	1172	-2.5%
SUSPICIOUS PERSON	18874	19903	5.5%
TRAFFIC RELATED	10418	10907	4.7%
TRESPASS	4251	4328	1.8%
VEHICLE RELATED	33267	28827	-13.3%
VIOLENT CRIMES TASK FORCE	13	1	-92.3%
WARRANT RELATED	3661	3579	-2.2%
WEAPON RELATED	6970	8066	15.7%
911 HANG UP / CALLBACK	30723	26006	-15.4%
TOTAL	393988	369453	-6.2%

¹These totals exclude duplicate and cancelled calls for service; they include calls handled by the Crime Reporting Unit as well as by division field officers, detectives and other CMPD staff.

²The type of call is entered by Communications based on the 911 call unless updated by an officer assigned to respond.

³In this summary, calls to Animal Control or Mecklenburg County Security include only those calls that involved the dispatching of other C-MPD officers, detectives, or staff.

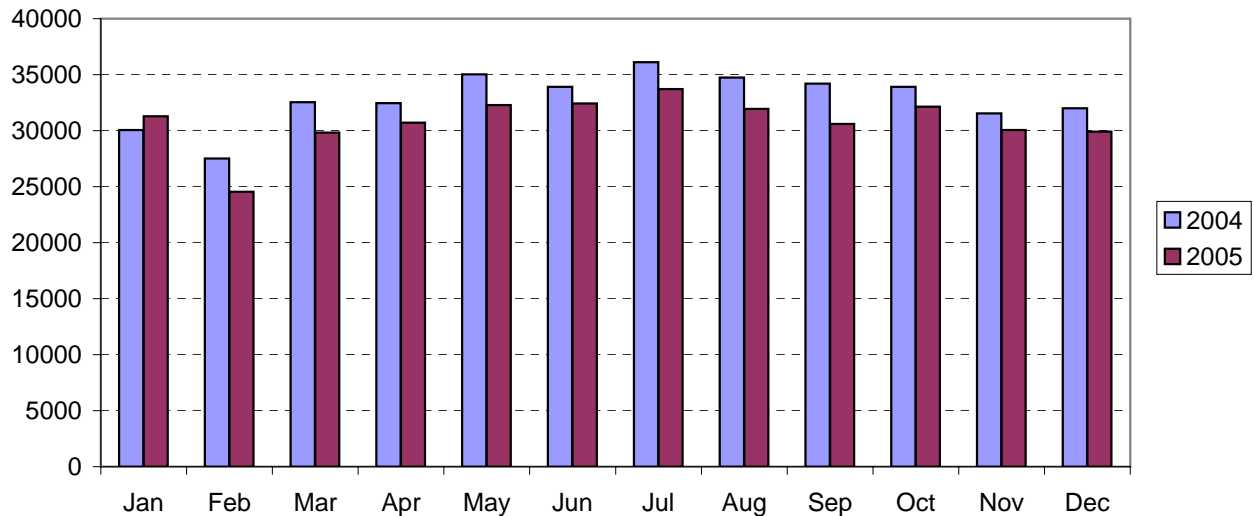
CITIZEN-INITIATED CALLS FOR SERVICE BY ORIGINATING CMPD DIVISION^{1,2}
 (Based on District of Call Origination, Not on Assigned District of Responding Units)

<u>District</u>	<u>2004 Year-to-Date</u>	<u>2005 Year-to-Date</u>	<u>Year-to-Date</u>
	<u>Jan through Dec</u>	<u>Jan through Dec</u>	<u>% Change</u>
Central-01 (D1)	23610	23106	-2.1%
Metro-02 (D2)	23234	20798	-10.5%
Eastway-06 (C2)	29177	27828	-4.6%
North Tryon-07 (D3)	24465	22663	-7.4%
North-11 (C1)	46698	44063	-5.6%
Hickory Grove-12 (C3)	35370	34328	-2.9%
Providence-16 (B1)	27456	25771	-6.1%
Independence-17 (B3)	35198	31809	-9.6%
Steele Creek-21 (A1)	33856	31711	-6.3%
South-22 (B2)	36257	33327	-8.1%
Westover-26 (A2)	26394	25453	-3.6%
Freedom-27 (A3)	38038	36982	-2.8%
Total	379753	357839	-5.8%

¹These totals exclude duplicate and cancelled calls for service; they include calls handled by the Crime Reporting Unit as well as by division field officers, detectives and other CMPD staff.

²Calls where the location could not be assigned to one of the divisions are not included in this chart.

Citizen-Initiated Calls for Service¹ by Month
Charlotte-Mecklenburg Police Department: 2004-2005



¹These totals exclude duplicate and cancelled calls for service; they include calls handled by the Crime Reporting Unit as well as by division field officers, detectives and other CMPD staff.

Uniform Crime Reporting Procedures

The Charlotte-Mecklenburg Police Department reports offense and arrest statistics in accordance with standard Uniform Crime Reporting (UCR) guidelines. UCR policy states that any adjustments to previous months can be made on the current month's report:

...In tabulating crime counts, an agency may find that offense totals for past months require adjustments due to developments in the investigation or other handling of the matter. It may be necessary to adjust totals reported to UCR for the past month or prior months. Needed adjustments can be made on the current month's report and do not affect the reliability of the figures in that such adjustments tend to equalize each other from month to month over a period of time.

- *Uniform Crime Reporting Handbook*, FBI, 1984, p. 42-43

We are required to report crime monthly to the UCR program, and we do therefore make an effort to process monthly changes in a timely manner. However, occasionally due to the review and processing required for reclassifying, unfounding or clearing cases, the current month's totals may reflect the processing of a backlog of these changes from previous months.

Users of the data are cautioned that conclusions about substantial changes in crime trends or in clearance rates based on only a single month's data or trend may reflect some of these adjustments. For this reason, in addition to the monthly and year-to-date trends on Page 1, the monthly report routinely includes a comparison for the previous 12 months (p. 4), as well as graphs that provide seasonal/monthly comparisons over a five-year period (p. 5-8).

UCR Definitions and Terms:

Index Crime: the eight offenses that the national UCR program tracks on a yearly basis to gauge trends in the extent of crime, despite differences among state and local criminal statutes. These offenses were selected on the basis of several factors: seriousness, frequency of occurrence, pervasiveness in all geographic areas, and/or likelihood of being reported to law enforcement.

Violent Index: includes the offenses of murder/non-negligent manslaughter, rape, robbery, and aggravated assault

Property Index: includes the offenses of burglary, larceny, vehicle theft and arson

Murder/non-negligent manslaughter: the willful killing of one human being by another

Rape: the carnal knowledge of a female forcibly and against her will [Note: This offense does not include other sex offenses or statutory (non-forcible) rape.]

Robbery: the taking or attempt to take anything of value from the care, custody, or control of a person or persons by force, threat of force or violence, or by putting the victim in fear.

Aggravated assault: an unlawful attack by one person on another for the purpose of inflicting severe or aggravated bodily injury; includes 1) all assaults in which a weapon of any type is used or is threatened to be used and/or 2) all assaults where serious injury occurs.

Burglary: the unlawful entry or attempted entry of a structure to commit a felony or a theft

Larceny-Theft: the unlawful taking (or attempt), carrying, leading, or riding away of property from the possession or constructive possession of another [Note: Larceny/theft of a motor vehicle is classed separately.]

Vehicle Theft: the theft or attempted theft of a motor vehicle (a self-propelled vehicle that runs on land and not on rails, excluding farm and construction equipment)

Arson: the willful or malicious burning or attempt to burn, with or without intent to defraud, a structure, motor vehicle, personal property of another, etc.

Hierarchy rule: For cases involving multiple-offenses, the incident is classified and counted based on the highest offense on a hierarchy of crimes established by UCR. For example, for an incident involving a rape and a burglary, the incident would be counted in the rape category because rape is higher than burglary on the hierarchy.

Clearance: A case is considered cleared when either at least one arrest is made for the offense or when an offender's identity is established by investigation but the offender will not be arrested for reasons outside law enforcement control (offender dies, victim refuses to prosecute, district attorney declines prosecution, extradition is refused, etc.).

Unfounding: A case is "unfounded" and subtracted from the crime counts when investigation establishes that the incident did not actually occur or that the actions within the incident are not criminal based on current law.

For additional information, please consult the *UCR Handbook* on the FBI website at <http://www.fbi.gov/ucr/ucr.htm>.

This report was compiled by the Research, Planning, and Analysis Division.

We make an effort to present the most accurate information available at the time this report is published. Please notify the Research, Planning, and Analysis office if you have any questions about the data in this report or about an error that was missed in proofing the report.