



**CHARLOTTE-MECKLENBURG POLICE DEPARTMENT
MONTHLY SUMMARY REPORT
SEPTEMBER, 2005**

**Darrel Stephens
Chief of Police**

INDEX OFFENSES REPORTED TO CHARLOTTE-MECKLENBURG POLICE DEPARTMENT

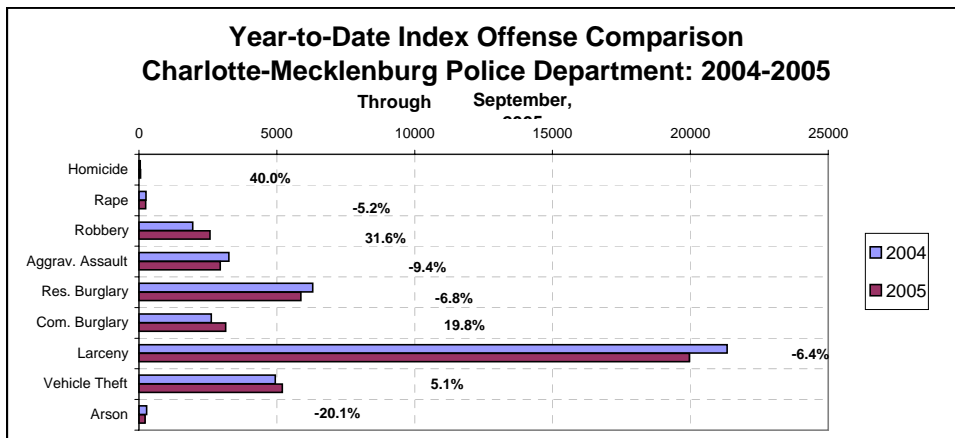
September, 2005 INDEX OFFENSES	# THIS MONTH	% OF ALL INDEX	# LAST MONTH	MONTHLY % CHANGE	SAME MONTH LAST YEAR	MONTHLY % CHANGE	THIS YEAR TO DATE	LAST YEAR TO DATE	ANNUAL % CHANGE
HOMICIDE (MURDER & NON- NEGLIGENT MANSLAUGHTER)	4	0.1%	10	-60.0%	6	-33.3%	63	45	40.0%
RAPE TOTAL	32	0.7%	20	60.0%	27	18.5%	239	252	-5.2%
ACTUAL	32	0.7%	19	68.4%	24	33.3%	227	233	-2.6%
ATTEMPT	0	0.0%	1	-100.0%	3	-100.0%	12	19	-36.8%
ROBBERY TOTAL	344	7.7%	333	3.3%	234	47.0%	2572	1954	31.6%
ARMED	290	6.5%	292	-0.7%	178	62.9%	2104	1516	38.8%
STRONG-ARM	54	1.2%	41	31.7%	56	-3.6%	468	438	6.8%
AGGRAVATED ASSAULT TOTAL	361	8.0%	388	-7.0%	356	1.4%	2951	3256	-9.4%
BURGLARY TOTAL	946	21.1%	1075	-12.0%	1095	-13.6%	9020	8925	1.1%
RESIDENTIAL	638	14.2%	716	-10.9%	808	-21.0%	5872	6298	-6.8%
COMMERCIAL	308	6.9%	359	-14.2%	287	7.3%	3148	2627	19.8%

FORCE	756	16.8%	849	-11.0%	900	-16.0%	7315	7224	1.3%
NO FORCE	141	3.1%	159	-11.3%	141	0.0%	1145	1187	-3.5%
ATTEMPT	49	1.1%	66	-25.8%	54	-9.3%	559	514	8.8%
LARCENY TOTAL	2147	47.8%	2417	-11.2%	2339	-8.2%	19960	21330	-6.4%
\$200 AND OVER	1065	23.7%	1195	-10.9%	1176	-9.4%	9826	10415	-5.7%
\$50 TO \$200	460	10.2%	493	-6.7%	474	-3.0%	3966	3923	1.1%
UNDER \$50	622	13.9%	729	-14.7%	689	-9.7%	6168	6992	-11.8%

FROM AUTO	1006	22.4%	1234	-18.5%	1209	-16.8%	9926	10987	-9.7%
BICYCLE	26	0.6%	33	-21.2%	24	8.3%	184	184	0.0%
SHOPLIFTING	225	5.0%	226	-0.4%	217	3.7%	1954	2196	-11.0%
OTHERS	890	19.8%	924	-3.7%	889	0.1%	7896	7963	-0.8%
VEHICLE THEFT TOTAL	635	14.1%	613	3.6%	613	3.6%	5198	4944	5.1%
ARSON TOTAL	20	0.4%	29	-31.0%	29	-31.0%	222	278	-20.1%
TOTALS	4489	100.0%	4885	-8.1%	4699	-4.5%	40225	40984	-1.9%
VIOLENT PROPERTY	741 3748	16.5% 83.5%	751 4134	-1.3% -9.3%	623 4076	18.9% -8.0%	5825 34400	5507 35477	5.8% -3.0%

NOTE: Internal robbery breakdowns by armed and strong-arm in October, 2004, reflect the late reclassification of some cases from previous months from armed robbery to strong-arm robbery.

NOTE: These totals include offenses reported to the Charlotte-Mecklenburg Police Department in accordance with the Uniform Crime Reporting Program. Totals for homicide do not include cases investigated by the police but classed by UCR guidelines as negligent manslaughter or as "justifiable homicide."

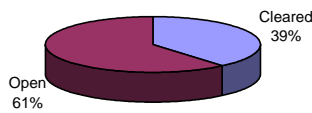


INDEX CLEARANCES REPORTED BY THE CHARLOTTE-MECKLENBURG POLICE DEPARTMENT

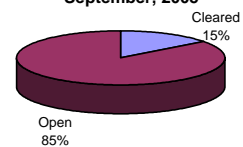
September, 2005 INDEX CLEARANCES	THIS MONTH:		LAST MONTH:		SAME MO. LAST YR:		THIS YEAR TO DATE:		LAST YEAR TO DATE:	
	NO.	%	NO.	%	NO.	%	NO.	%	NO.	%
MURDER & NON-NEGLIGENT MANSLAUGHTER	4	100.0%	7	70.0%	11	183.3%	28	44.4%	26	57.8%
RAPE TOTAL	24	75.0%	26	130.0%	6	22.2%	201	84.1%	142	56.3%
ACTUAL	23	71.9%	0	0.0%	4	16.7%	168	74.0%	130	55.8%
ATTEMPT	1	#DIV/0!	0	0.0%	2	66.7%	17	141.7%	12	63.2%
ROBBERY TOTAL	54	15.7%	65	19.5%	31	13.2%	558	21.7%	476	24.4%
ARMED	40	13.8%	50	17.1%	18	10.1%	429	20.4%	353	23.3%
STRONG-ARM	14	25.9%	15	36.6%	13	23.2%	129	27.6%	123	28.1%
AGGRAVATED ASSAULT TOTAL	166	46.0%	178	45.9%	144	40.4%	1484	50.3%	1628	50.0%
BURGLARY TOTAL	142	15.0%	232	21.6%	129	11.8%	1200	13.3%	926	10.4%
RESIDENTIAL	91	14.3%	100	14.0%	107	13.2%	838	14.3%	758	12.0%
COMMERCIAL	61	19.8%	132	36.8%	22	7.7%	372	11.8%	168	6.4%
LARCENY TOTAL	293	13.6%	332	13.7%	361	15.4%	2932	14.7%	2785	13.1%
FROM AUTO	31	3.1%	50	4.1%	45	3.7%	388	3.9%	315	2.9%
BICYCLE	5	19.2%	7	21.2%	3	12.5%	30	16.3%	13	7.1%
SHOPLIFTING	135	60.0%	153	67.7%	167	77.0%	1307	66.9%	1358	61.8%
OTHERS	122	13.7%	122	13.2%	146	16.4%	1207	15.3%	1099	13.8%
VEHICLE THEFT TOTAL	82	12.9%	107	17.5%	103	16.8%	842	16.2%	863	17.5%
ARSON TOTAL	8	40.0%	7	24.1%	11	37.9%	54	24.3%	75	27.0%
TOTALS	773	17.2%	954	19.5%	796	16.9%	7299	18.1%	6921	16.9%
VIOLENT PROPERTY	248	33.5%	276	36.8%	192	30.8%	2271	39.0%	2272	41.3%
	525	14.0%	678	16.4%	604	14.8%	5028	14.6%	4649	13.1%

NOTE: Clearances are reported in accordance with Uniform Crime Report guidelines. Since clearances are not counted until they are entered in the any delays in entry of the documentation may result in some clearances being reported in succeeding months.
Clearances for six additional homicides from 1984 - 1989 are not included in the homicide clearance totals above for Jan-Aug, 2005; the homicide clearance rate with those included as calculated by UCR guidelines is 50.8%.

**Year-to-Date Violent Index Clearance Rate
Charlotte-Mecklenburg Police Department: 2004
September, 2005**

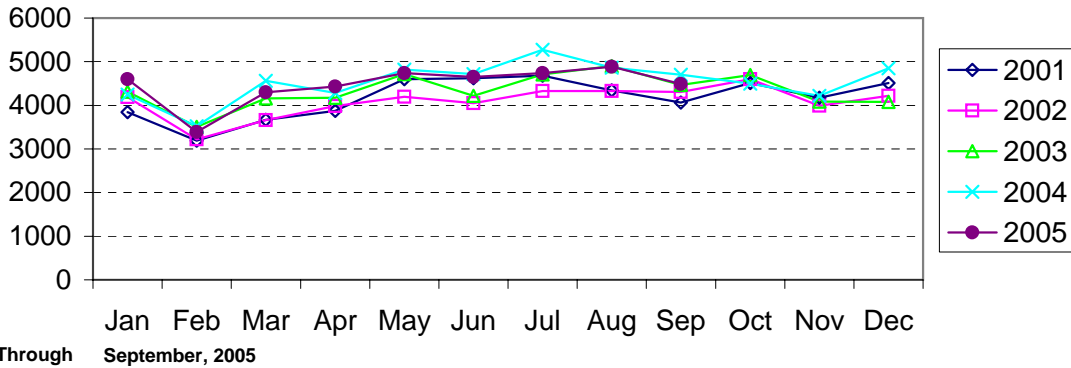


**Year-to-Date Property Index Clearance Rate
Charlotte-Mecklenburg Police Department: 2004
September, 2005**

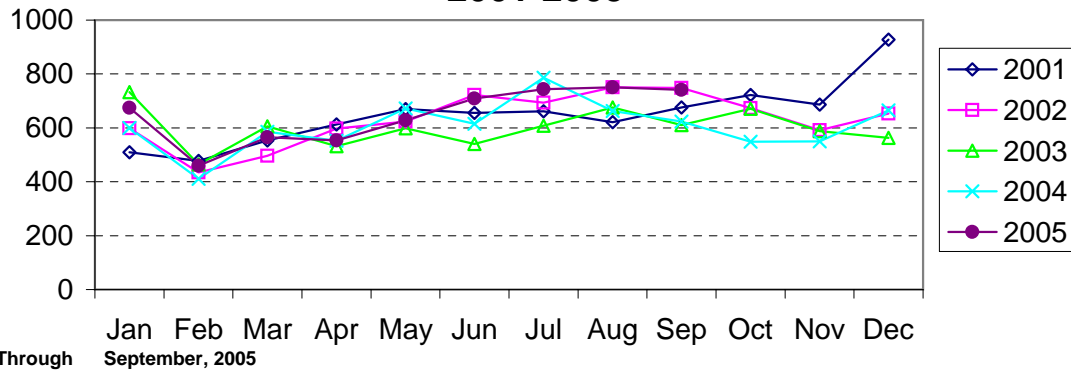


Clearance rates for crime reporting are calculated by dividing the number of crimes cleared during a designated time span by the number of crimes reported in the same period and converting the result to a percentage (multiplying by 100). Since cases from previous reporting periods can be cleared during the designated time span, the rate may be higher than 100%.

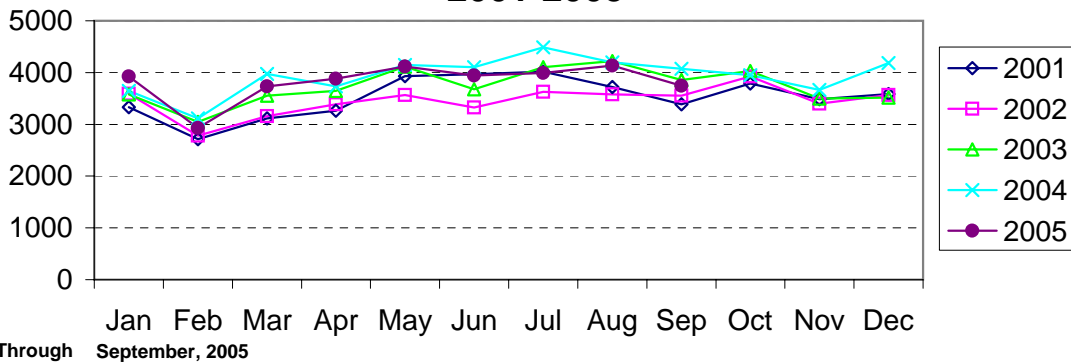
Index Offenses Reported by Month Charlotte-Mecklenburg Police Department: 2001-2005



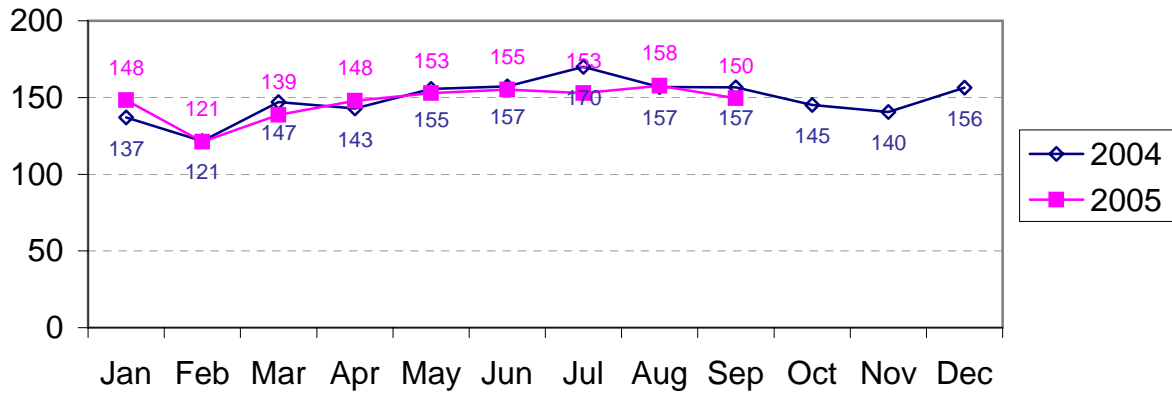
Violent Index Offenses Reported by Month Charlotte-Mecklenburg Police Department: 2001-2005



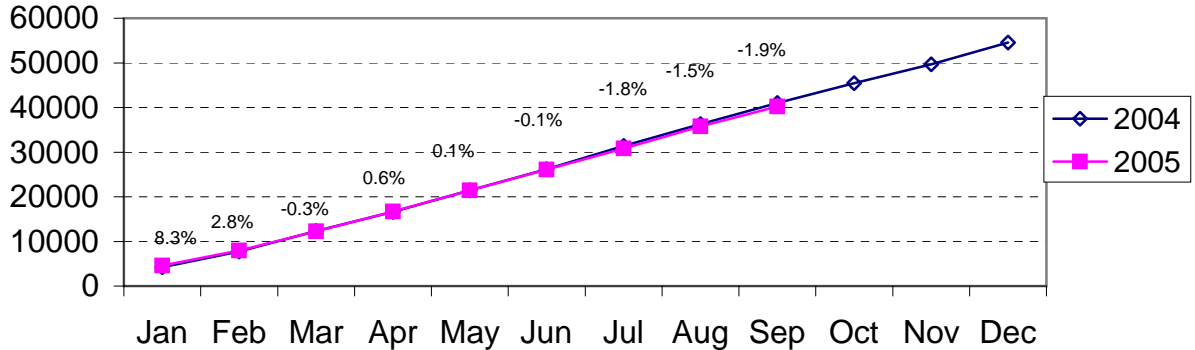
Property Index Offenses Reported by Month Charlotte-Mecklenburg Police Department: 2001-2005



Index Offense Per Day Average by Month Charlotte-Mecklenburg Police Department: 2004-2005

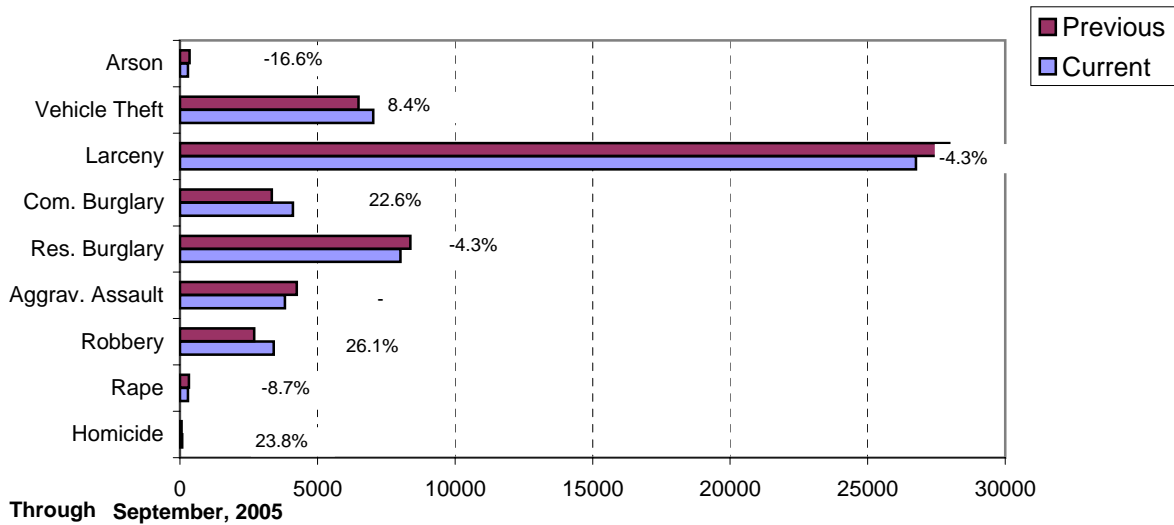


Index Offenses Year-to-Date Cumulative Totals Charlotte-Mecklenburg Police Department: 2004-2005

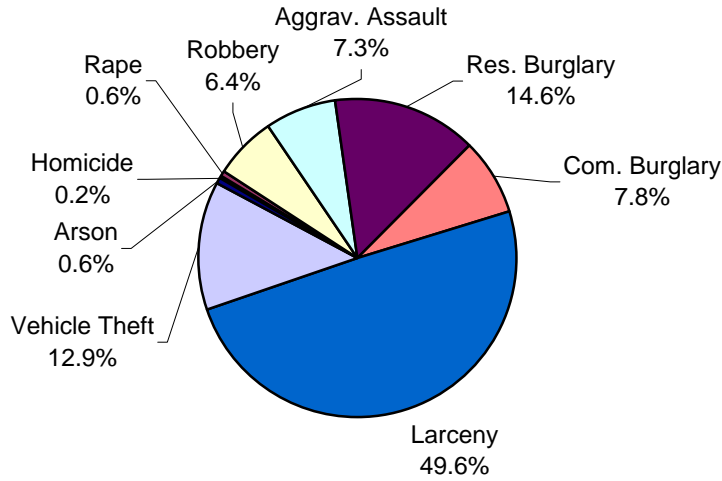


Through September,

Index Offenses in Current and Previous 12 Months Charlotte-Mecklenburg Police Department

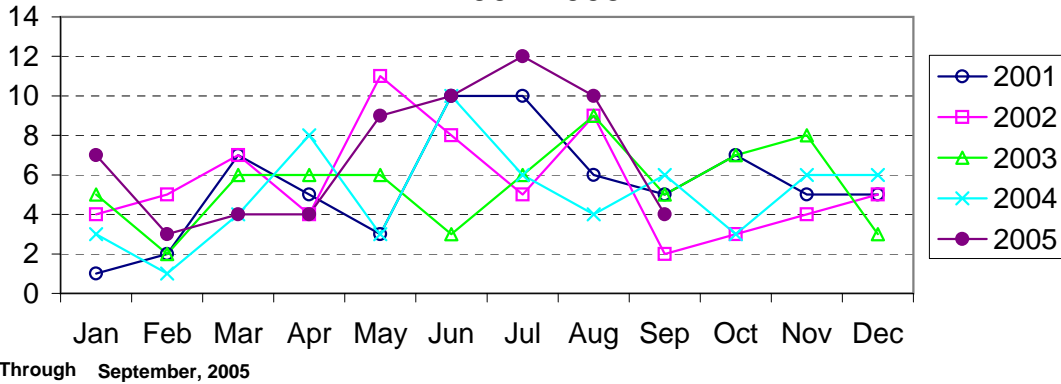


Year-to-Date Index Offenses by Type Charlotte-Mecklenburg Police Department: 2005

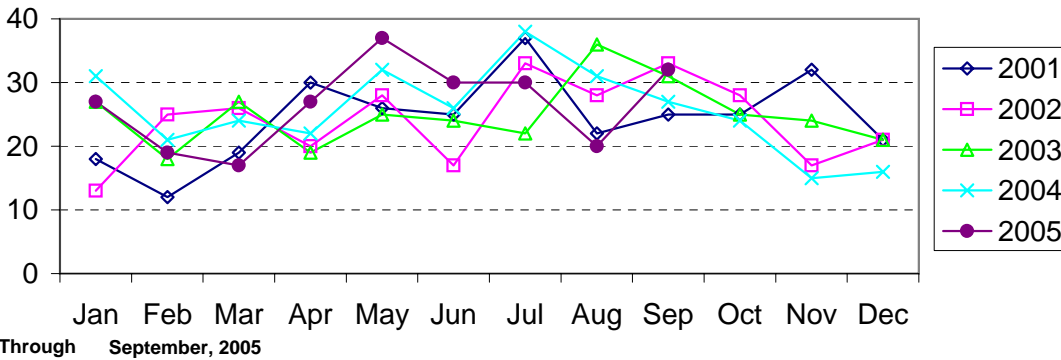


Through September,

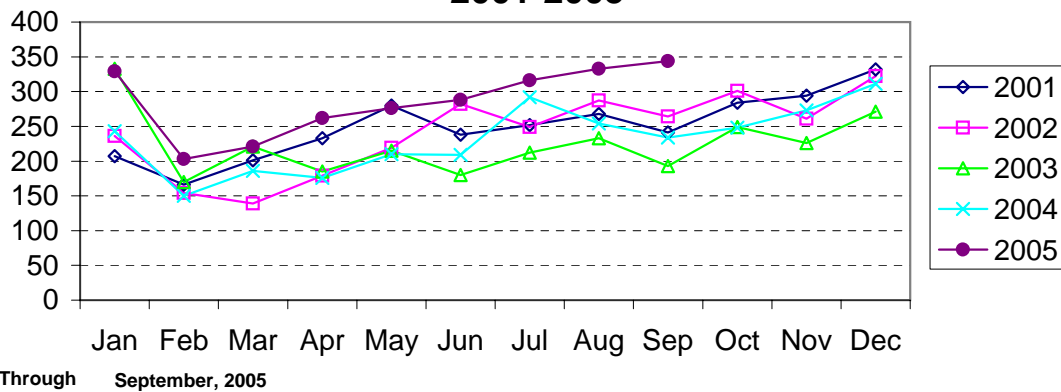
Homicide Reported by Month Charlotte-Mecklenburg Police Department: 2001-2005



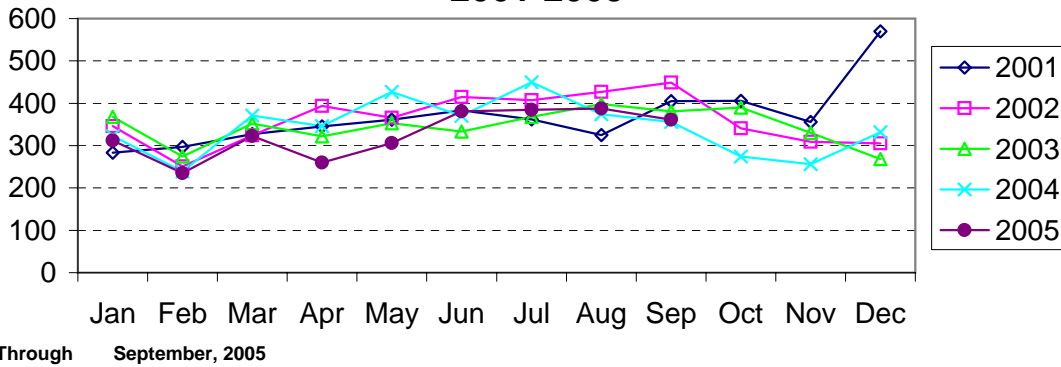
Rape Reported by Month Charlotte-Mecklenburg Police Department: 2001-2005



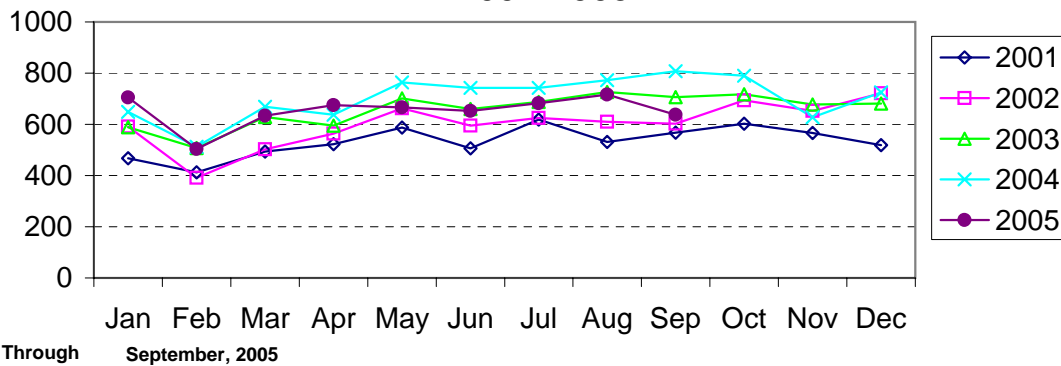
Robbery Reported by Month Charlotte-Mecklenburg Police Department: 2001-2005



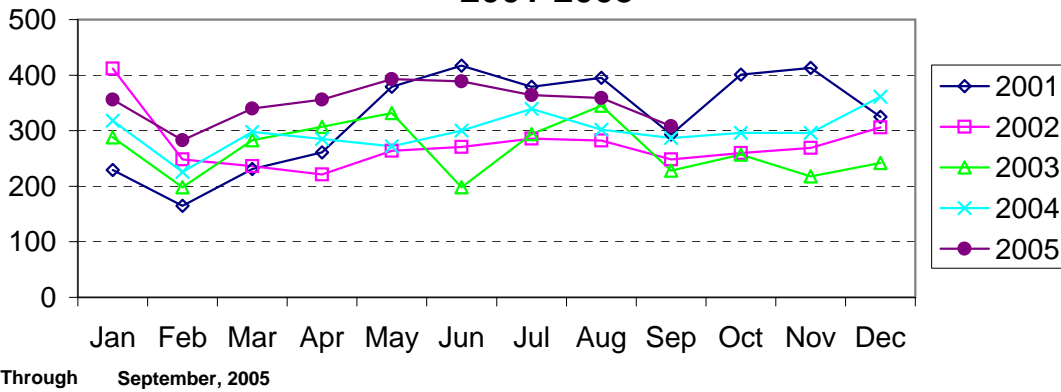
**Aggravated Assault Reported by Month
Charlotte-Mecklenburg Police Department:
2001-2005**



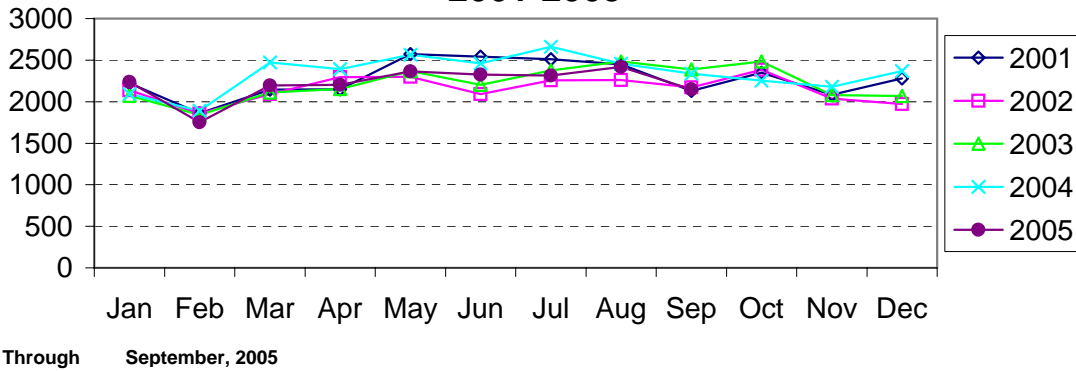
**Residential Burglary Reported by Month
Charlotte-Mecklenburg Police Department:
2001-2005**



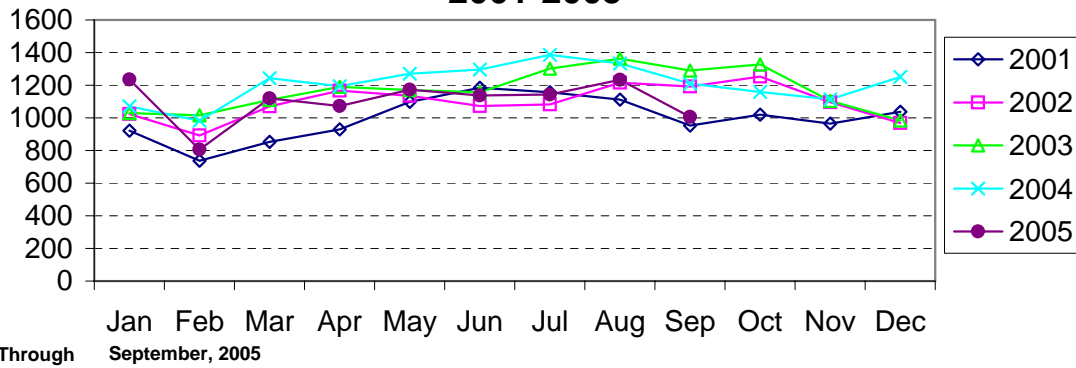
**Commercial Burglary Reported by Month
Charlotte-Mecklenburg Police Department:
2001-2005**



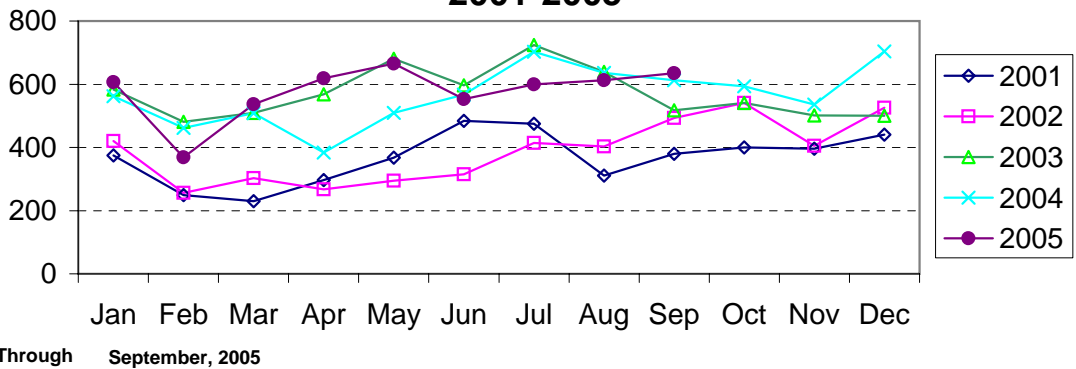
Larceny Reported by Month Charlotte-Mecklenburg Police Department: 2001-2005



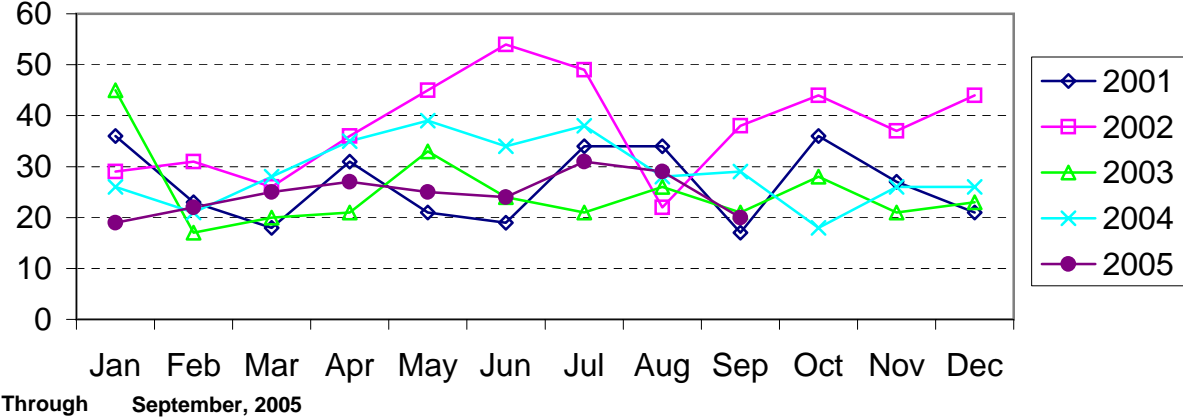
Larceny from Vehicle Reported by Month Charlotte-Mecklenburg Police Department: 2001-2005



Vehicle Theft Reported by Month Charlotte-Mecklenburg Police Department: 2001-2005



Arson Reported by Month Charlotte-Mecklenburg Police Department: 2001-2005



Index Offenses Reported by Division and Service Area of Occurrence									
West Service Area: Jan-Sep, 2004-2005									
INDEX_CATEGORIES	Westover (A2)			Freedom (A3)			West Service Area		
	2004	2005	% Change	2004	2005	% Change	2004	2005	% Change
MURDER & NON-NEGLIGENT MANSLAUGHTER	1	5	400.0%	5	10	100.0%	6	15	150.0%
RAPE	22	19	-13.6%	23	22	-4.3%	45	41	-8.9%
ACTUAL	22	18	-18.2%	23	20	-13.0%	45	38	-15.6%
ATTEMPTED	0	1	NA	0	2	NA	0	3	NA
ROBBERY	152	232	52.6%	213	343	61.0%	365	575	57.5%
ARMED	120	186	55.0%	163	305	87.1%	283	491	73.5%
STRONG-ARM	32	46	43.8%	50	38	-24.0%	82	84	2.4%
AGGRAVATED ASSAULT	278	356	28.1%	370	378	2.2%	648	734	13.3%
BURGLARY	654	746	14.1%	1241	1173	-5.5%	1895	1919	1.3%
RESIDENTIAL	440	429	-2.5%	866	721	-16.7%	1306	1150	-11.9%
COMMERCIAL	214	317	48.1%	375	452	20.5%	589	769	30.6%
LARCENY	1314	1317	0.2%	1993	1813	-9.0%	3307	3130	-5.4%
FROM AUTO	673	626	-7.0%	943	794	-15.8%	1616	1420	-12.1%
BICYCLE	10	5	-50.0%	11	15	36.4%	21	20	-4.8%
SHOPLIFTING	105	104	-1.0%	201	169	-15.9%	306	273	-10.8%
OTHERS	526	582	10.6%	838	835	-0.4%	1364	1417	3.9%
VEHICLE THEFT	342	389	13.7%	514	517	0.6%	856	906	5.8%
ARSON	23	19	-17.4%	30	30	0.0%	53	49	-7.5%
TOTALS	2786	3083	10.7%	4389	4286	-2.3%	7175	7369	2.7%
VIOLENT	453	612	35.1%	611	753	23.2%	1064	1365	28.3%
PROPERTY	2333	2471	5.9%	3778	3533	-6.5%	6111	6004	-1.8%

Index Offenses Reported by Division and Service Area of Occurrence									
Southeast Service Area: Jan-Sep, 2004-2005									
INDEX_CATEGORIES	Providence (B1)			Independence (B3)			Southeast Service Area		
	2004	2005	% Change	2004	2005	% Change	2004	2005	% Change
MURDER & NON-NEGLIGENT MANSLAUGHTER	3	4	33.3%	2	3	50.0%	5	7	40.0%
RAPE	12	13	8.3%	18	20	11.1%	30	33	10.0%
ACTUAL	11	13	18.2%	17	18	5.9%	28	31	10.7%
ATTEMPTED	1	0	-100.0%	1	2	100.0%	2	2	0.0%
ROBBERY	99	97	-2.0%	163	212	30.1%	262	309	17.9%
ARMED	73	76	4.1%	134	177	32.1%	207	253	22.2%
STRONG-ARM	26	21	-19.2%	29	35	20.7%	55	56	1.8%
AGGRAVATED ASSAULT	133	101	-24.1%	259	226	-12.7%	392	327	-16.6%
BURGLARY	629	698	11.0%	821	709	-13.6%	1450	1407	-3.0%
RESIDENTIAL	380	478	25.8%	656	535	-18.4%	1036	1013	-2.2%
COMMERCIAL	249	220	-11.6%	165	174	5.5%	414	394	-4.8%
LARCENY	1482	1439	-2.9%	1662	1742	4.8%	3144	3181	1.2%
FROM AUTO	689	622	-9.7%	932	932	0.0%	1621	1554	-4.1%
BICYCLE	15	15	0.0%	14	14	0.0%	29	29	0.0%
SHOPLIFTING	149	186	24.8%	130	193	48.5%	279	379	35.8%
OTHERS	629	616	-2.1%	586	603	2.9%	1215	1219	0.3%
VEHICLE THEFT	269	237	-11.9%	484	565	16.7%	753	802	6.5%
ARSON	11	8	-27.3%	25	22	-12.0%	36	30	-16.7%
TOTALS	2638	2597	-1.6%	3434	3499	1.9%	6072	6096	0.4%
VIOLENT	247	215	-13.0%	442	461	4.3%	689	676	-1.9%
PROPERTY	2391	2382	-0.4%	2992	3038	1.5%	5383	5420	0.7%

The data in the district breakdowns does not include a small number of offenses in which the offense location (or reporting location if offense location was unknown) were entered without one of the 12 valid division assignments. Districts are not equal in geographic size, demographics, zoning/development, and other factors that influence the rate of crimes committed in an area. Therefore, the comparison of raw offense totals across districts is **not** advisable.

Index Offenses Reported by Division and Service Area of Occurrence									
Northeast Service Area: Jan-Sep, 2004-2005									
INDEX_CATEGORIES	North (C1)			Hickory Grove (C3)			Northeast Service Area		
	2004	2005	% Change	2004	2005	% Change	2004	2005	% Change
MURDER & NON-NEGLIGENT MANSLAUGHTER	4	10	150.0%	2	7	250.0%	6	17	183.3%
RAPE	34	32	-5.9%	30	29	-3.3%	64	61	-4.7%
ACTUAL	32	29	-9.4%	26	27	3.8%	58	56	-3.4%
ATTEMPTED	2	3	50.0%	4	2	-50.0%	6	5	-16.7%
ROBBERY	183	191	4.4%	175	225	28.6%	358	416	16.2%
ARMED	146	163	11.6%	143	181	26.6%	289	344	19.0%
STRONG-ARM	37	28	-24.3%	32	44	37.5%	69	72	4.3%
AGGRAVATED ASSAULT	282	261	-7.4%	340	303	-10.9%	622	564	-9.3%
BURGLARY	1194	1115	-6.6%	895	1141	27.5%	2089	2256	8.0%
RESIDENTIAL	848	742	-12.5%	722	719	-0.4%	1570	1461	-6.9%
COMMERCIAL*	346	373	7.8%	173	422	143.9%	519	795	53.2%
LARCENY	3189	3305	3.6%	1634	1526	-6.6%	4823	4831	0.2%
FROM AUTO	1809	1787	-1.2%	826	807	-2.3%	2635	2594	-1.6%
BICYCLE	16	24	50.0%	33	27	-18.2%	49	51	4.1%
SHOPLIFTING	274	303	10.6%	123	131	6.5%	397	434	9.3%
OTHERS	1090	1191	9.3%	652	561	-14.0%	1742	1752	0.6%
VEHICLE THEFT	643	711	10.6%	535	576	7.7%	1178	1287	9.3%
ARSON	38	35	-7.9%	38	26	-31.6%	76	61	-19.7%
TOTALS	5567	5660	1.7%	3649	3833	5.0%	9216	9493	3.0%
VIOLENT PROPERTY	503 5064	494 5166	-1.8% 2.0%	547 3102	564 3269	3.1% 5.4%	1050 8166	1058 8435	0.8% 3.3%

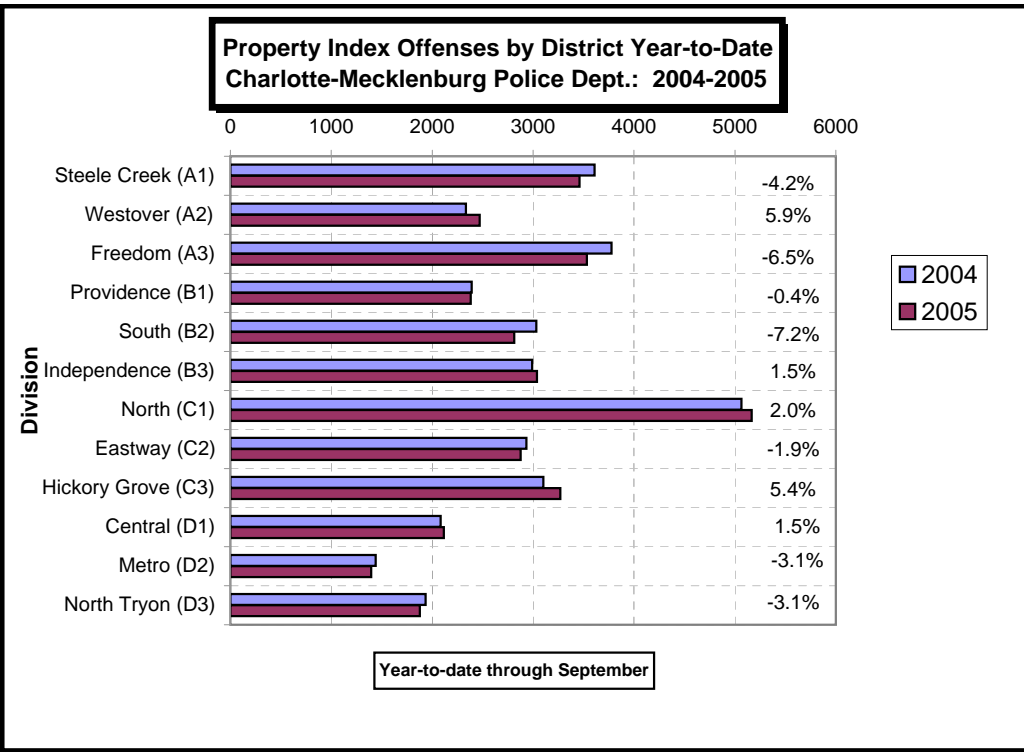
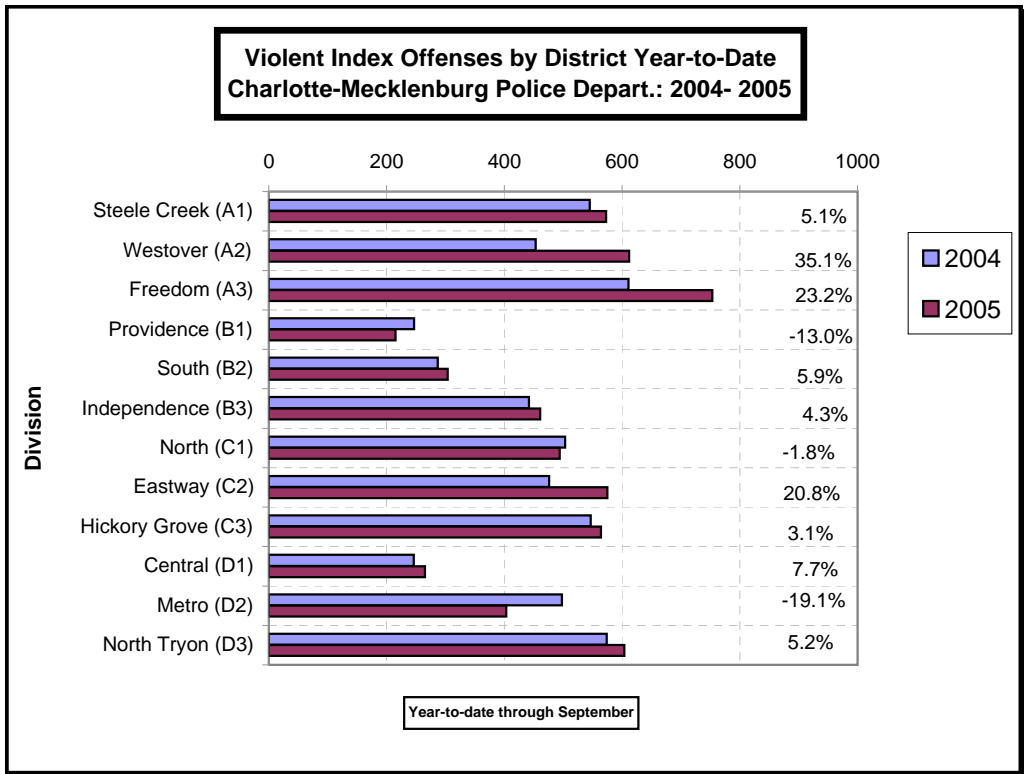
Index Offenses Reported by Division and Service Area of Occurrence									
Central Service Area: Jan-Sep, 2004-2005									
INDEX_CATEGORIES	Central (D1)			Metro (D2)			Central Service Area		
	2004	2005	% Change	2004	2005	% Change	2004	2005	% Change
MURDER & NON-NEGLIGENT MANSLAUGHTER	1	4	300.0%	7	7	0.0%	8	11	37.5%
RAPE	15	26	73.3%	20	8	-60.0%	35	34	-2.9%
ACTUAL	14	25	78.6%	19	9	-52.6%	33	34	3.0%
ATTEMPTED	1	1	0.0%	1	-1	-200.0%	2	0	-100.0%
ROBBERY	97	134	38.1%	155	155	0.0%	252	289	14.7%
ARMED	58	84	44.8%	130	120	-7.7%	188	204	8.5%
STRONG-ARM	39	50	28.2%	25	35	40.0%	64	85	32.8%
AGGRAVATED ASSAULT	133	101	-24.1%	316	233	-26.3%	449	334	-25.6%
BURGLARY	283	279	-1.4%	465	439	-5.6%	748	718	-4.0%
RESIDENTIAL	111	103	-7.2%	340	340	0.0%	451	443	-1.8%
COMMERCIAL	172	176	2.3%	125	99	-20.8%	297	275	-7.4%
LARCENY	1563	1560	-0.2%	722	669	-7.3%	2285	2229	-2.5%
FROM AUTO	853	835	-2.1%	324	301	-7.1%	1177	1136	-3.5%
BICYCLE	15	27	80.0%	6	10	66.7%	21	37	76.2%
SHOPLIFTING	51	49	-3.9%	53	23	-56.6%	104	72	-30.8%
OTHERS	644	649	0.8%	339	335	-1.2%	983	984	0.1%
VEHICLE THEFT	235	277	17.9%	240	270	12.5%	475	547	15.2%
ARSON	3	0	-100.0%	12	16	33.3%	15	16	6.7%
TOTALS	2330	2381	2.2%	1937	1797	-7.2%	4267	4178	-2.1%
VIOLENT PROPERTY	246 2084	265 2116	7.7% 1.5%	498 1439	403 1394	-19.1% -3.1%	744 3523	668 3510	-10.2% -0.4%

*The Commercial Burglary total in the Hickory Grove Division in 2005 includes incidents at mini-storage businesses where 50 and 65 units were entered or attempted; UCR requires counting each unit as a burglary. Districts are not equal in geographic size, demographics, zoning/development, and other factors that influence the rate of crimes committed in an area. Therefore, the comparison of raw offense totals across districts is not advisable.

Index Offenses Reported by Division and Service Area of Occurrence									
East Service Area: Jan-Sep, 2004-2005									
INDEX_CATEGORIES	Eastway (C2)			North Tryon (D3)			East Service Area		
	2004	2005	% Change	2004	2005	% Change	2004	2005	% Change
MURDER & NON-NEGLIGENT MANSLAUGHTER	5	5	0.0%	7	4	-42.9%	12	9	-25.0%
RAPE	17	22	29.4%	15	8	-46.7%	32	30	-6.3%
ACTUAL	14	21	50.0%	14	7	-50.0%	28	28	0.0%
ATTEMPTED	3	1	-66.7%	1	1	0.0%	4	2	-50.0%
ROBBERY	205	330	61.0%	209	255	22.0%	414	585	41.3%
ARMED	153	264	72.5%	159	209	31.4%	312	473	51.6%
STRONG-ARM	52	66	26.9%	50	46	-8.0%	102	112	9.8%
AGGRAVATED ASSAULT	249	218	-12.4%	343	337	-1.7%	592	555	-6.3%
BURGLARY	734	803	9.4%	556	604	8.6%	1290	1407	9.1%
RESIDENTIAL	533	596	11.8%	367	361	-1.6%	900	957	6.3%
COMMERCIAL	201	207	3.0%	189	246	30.2%	390	453	16.2%
LARCENY	1758	1644	-6.5%	1023	949	-7.2%	2781	2593	-6.8%
FROM AUTO	633	617	-2.5%	496	455	-8.3%	1129	1072	-5.0%
BICYCLE	21	20	-4.8%	8	5	-37.5%	29	25	-13.8%
SHOPLIFTING	586	403	-31.2%	84	52	-38.1%	670	455	-32.1%
OTHERS	518	604	16.6%	435	437	0.5%	953	1041	9.2%
VEHICLE THEFT	416	413	-0.7%	348	314	-9.8%	764	727	-4.8%
ARSON	24	16	-33.3%	9	9	0.0%	33	25	-24.2%
TOTALS	3408	3451	1.3%	2510	2480	-1.2%	5918	5931	0.2%
VIOLENT	476	575	20.8%	574	604	5.2%	1050	1179	12.3%
PROPERTY	2932	2876	-1.9%	1936	1876	-3.1%	4868	4752	-2.4%

Index Offenses Reported by Division and Service Area of Occurrence									
South Service Area: Jan-Sep, 2004-2005									
INDEX_CATEGORIES	Steele Creek (A1)			South (B2)			South Service Area		
	2004	2005	% Change	2004	2005	% Change	2004	2005	% Change
MURDER & NON-NEGLIGENT MANSLAUGHTER	7	4	-42.9%	1	0	-100.0%	8	4	-50.0%
RAPE	19	26	36.8%	16	12	-25.0%	35	38	8.6%
ACTUAL	17	26	52.9%	13	12	-7.7%	30	38	26.7%
ATTEMPTED	2	0	-100.0%	3	0	-100.0%	5	0	-100.0%
ROBBERY	175	239	36.6%	102	159	55.9%	277	398	43.7%
ARMED	139	204	46.8%	78	135	73.1%	217	339	56.2%
STRONG-ARM	36	35	-2.8%	24	24	0.0%	60	59	-1.7%
AGGRAVATED ASSAULT	344	304	-11.6%	168	133	-20.8%	512	437	-14.6%
BURGLARY	649	673	3.7%	633	639	0.9%	1282	1312	2.3%
RESIDENTIAL	449	407	-9.4%	492	443	-10.0%	941	850	-9.7%
COMMERCIAL	200	266	33.0%	141	196	39.0%	341	462	35.5%
LARCENY	2473	2199	-11.1%	2016	1795	-11.0%	4489	3994	-11.0%
FROM AUTO	1395	1156	-17.1%	1147	993	-13.4%	2542	2149	-15.5%
BICYCLE	21	13	-38.1%	13	9	-30.8%	34	22	-35.3%
SHOPLIFTING	306	202	-34.0%	116	139	19.8%	422	341	-19.2%
OTHERS	751	828	10.3%	740	654	-11.6%	1491	1482	-0.6%
VEHICLE THEFT	455	566	24.4%	353	359	1.7%	808	925	14.5%
ARSON	32	21	-34.4%	29	20	-31.0%	61	41	-32.8%
TOTALS	4154	4032	-2.9%	3318	3117	-6.1%	7472	7149	-4.3%
VIOLENT	545	573	5.1%	287	304	5.9%	832	877	5.4%
PROPERTY	3609	3459	-4.2%	3031	2813	-7.2%	6640	6272	-5.5%

The data in the district breakdowns does not include a small number of offenses in which the offense location (or reporting location if offense location was unknown) were entered without one of the 12 valid division assignments. Districts are not equal in geographic size, demographics, zoning/development, and other factors that influence the rate of crimes committed in an area. Therefore, the comparison of raw offense totals across districts is **not** advisable.



The data in the district breakdowns does not include a small number of offenses in which the offense location (or reporting location if offense location was unknown) were entered without one of the 12 valid division assignments. Districts are not equal in geographic size, demographics, zoning/development, and other factors that influence the rate of crimes committed in an area. Therefore, the comparison of raw offense totals across districts is **not** advisable.

**Arrests by Charlotte-Mecklenburg Police Department
Year-To-Date: 2004-2005
(Through September)**

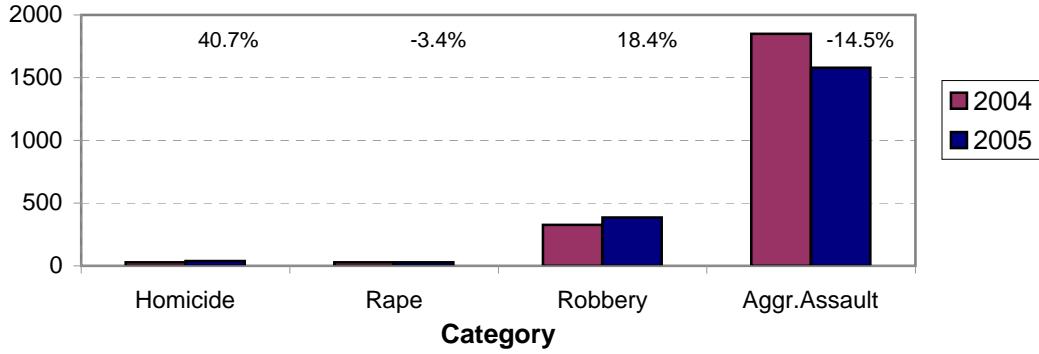
CATEGORY	ADULTS (AGE 18 & OLDER):			JUVENILES (UNDER 18):			TOTAL ARRESTS:		
	2004 Y-T-D	2005 Y-T-D	% CHANGE	2004 Y-T-D	2005 Y-T-D	% CHANGE	2004 Y-T-D	2005 Y-T-D	% CHANGE
Murder/Non-Negligent Manslaughter	27	36	33.3%	0	2	NA	27	38	40.7%
Negligent & Vehicular Manslaughter	4	3	-25.0%	0	0	NA	4	3	-25.0%
Rape	27	27	0.0%	2	1	-50.0%	29	28	-3.4%
Robbery	221	304	37.6%	105	82	-21.9%	326	386	18.4%
Aggravated Assault	1605	1364	-15.0%	244	216	-11.5%	1849	1580	-14.5%
Burglary	441	460	4.3%	165	181	9.7%	606	641	5.8%
Larceny	1201	1181	-1.7%	460	403	-12.4%	1661	1584	-4.6%
Vehicle Theft	60	69	15.0%	120	82	-31.7%	180	151	-16.1%
Non-Aggravated Assault	1403	1543	10.0%	616	584	-5.2%	2019	2127	5.3%
Arson	14	9	-35.7%	25	24	-4.0%	39	33	-15.4%
Forgery/Counterfiet	106	101	-4.7%	2	2	0.0%	108	103	-4.6%
Fraud	419	443	5.7%	7	4	-42.9%	426	447	4.9%
Embezzlement	72	62	-13.9%	12	9	-25.0%	84	71	-15.5%
Stolen Property	393	375	-4.6%	75	107	42.7%	468	482	3.0%
Vandalism	166	168	1.2%	157	177	12.7%	323	345	6.8%
Weapons	332	464	39.8%	49	50	2.0%	381	514	34.9%
Prostitution	278	215	-22.7%	8	2	-75.0%	286	217	-24.1%
Sex Offenses	157	126	-19.7%	16	21	31.3%	173	147	-15.0%
Drugs	2028	2023	-0.2%	191	208	8.9%	2219	2231	0.5%
Gambling	12	3	-75.0%	0	0	NA	12	3	-75.0%
Offenses vs. Family	4	4	0.0%	1	0	-100.0%	5	4	-20.0%
DUI	1465	1546	5.5%	8	8	0.0%	1473	1554	5.5%
Liquor	159	166	4.4%	6	8	33.3%	165	174	5.5%
Disorder.Conduct	429	400	-6.8%	227	234	3.1%	656	634	-3.4%
Other Non-Traffic	6085	6035	-0.8%	573	596	4.0%	6658	6631	-0.4%
VIOLENT INDEX¹	1880	1731	-7.9%	351	301	-14.2%	2231	2032	-8.9%
PROPERTY INDEX²	1716	1719	0.2%	770	690	-10.4%	2486	2409	-3.1%
INDEX SUBTOTAL	3596	3450	-4.1%	1121	991	-11.6%	4717	4441	-5.9%
PART 2 SUBTOTAL³	13512	13677	1.2%	1948	2010	3.2%	15460	15687	1.5%
TOTAL	17108	17127	0.1%	3069	3001	-2.2%	20177	20128	-0.2%

¹Violent Index includes murder and non-negligent manslaughter, rape, robbery, and aggravated assault.

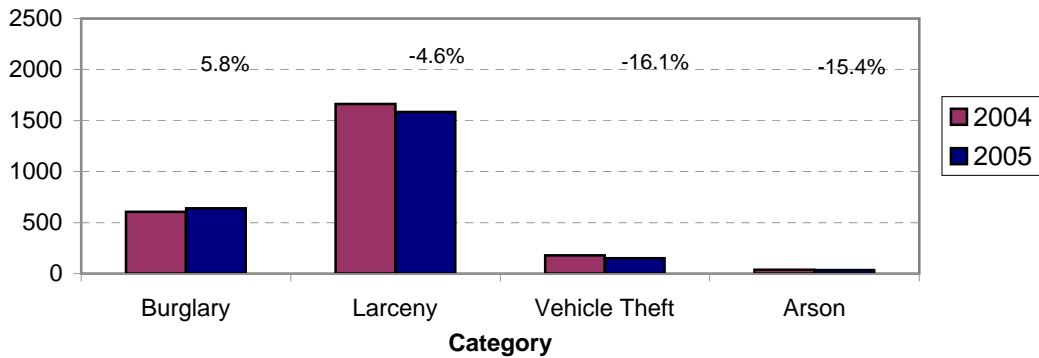
²Property Index includes burglary, larceny, vehicle theft, and arson.

³Part 2 crimes include crime categories not counted in the Index totals.

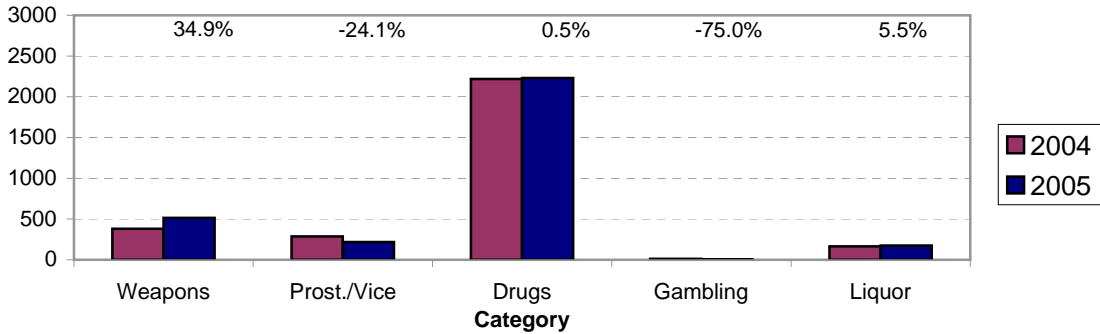
**Violent Index Arrests Year-to-Date
Charlotte-Mecklenburg Police Department: 2004-2005
(Through September)**



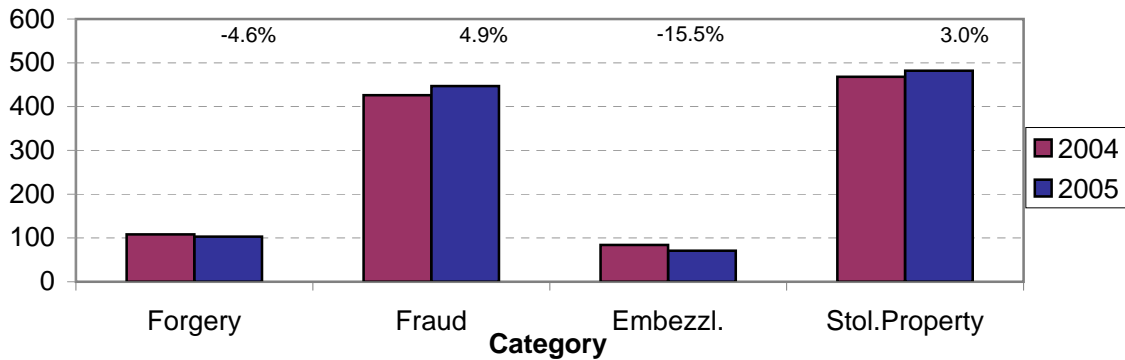
**Property Index Arrests Year-to-Date
Charlotte-Mecklenburg Police Department: 2004-2005
(Through September)**



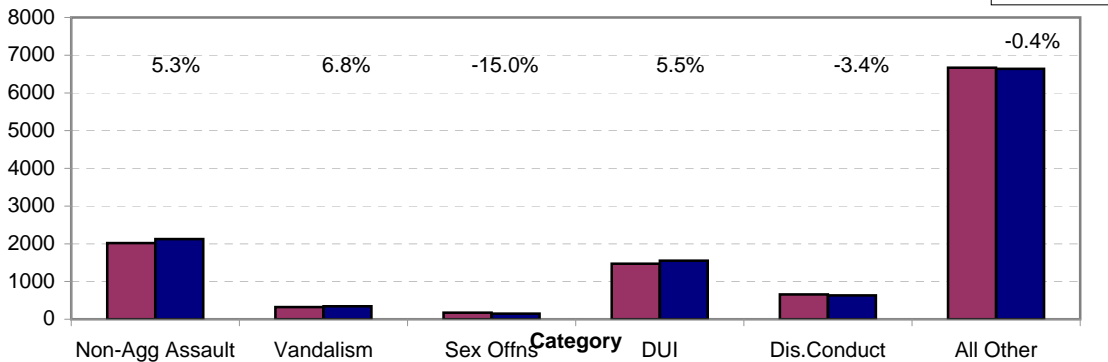
**Arrests for Vice/CCW/Drugs/Etc. Year-to-Date
Charlotte-Mecklenburg Police Department: 2004 - 2005
(Through September)**



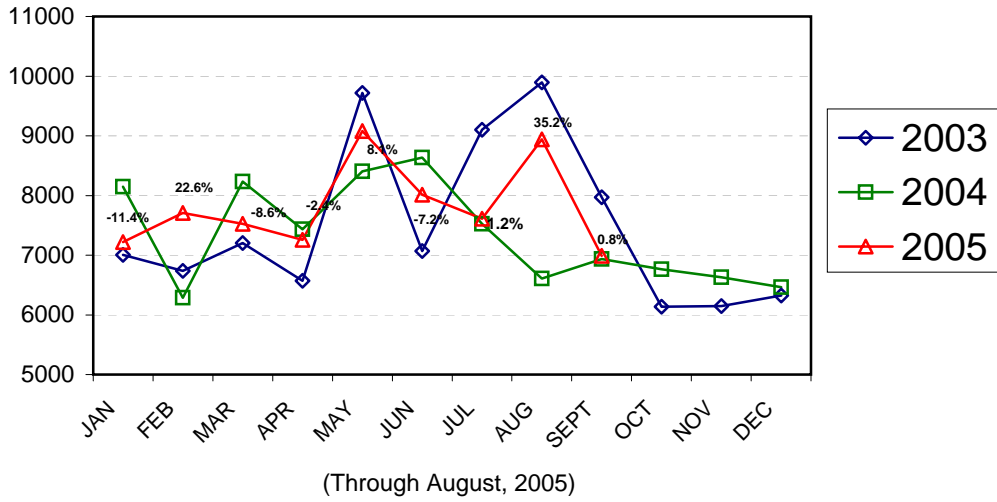
**Arrests for Property/White Collar Crime Year-to-Date
Charlotte-Mecklenburg Police Department: 2004- 2005
(Through September)**



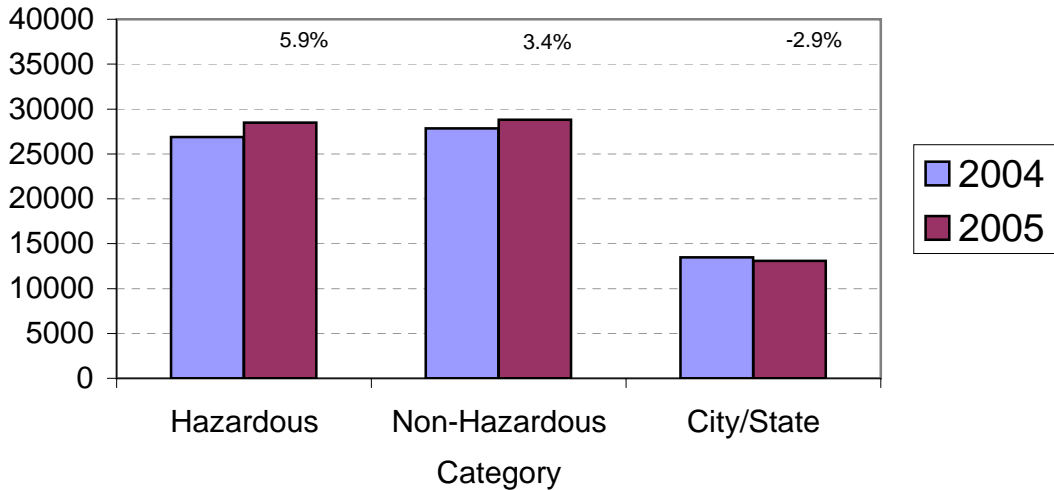
**Arrests for Other Categories Year-to-Date
Charlotte-Mecklenburg Police Department: 2004 - 2005
(Through September)**



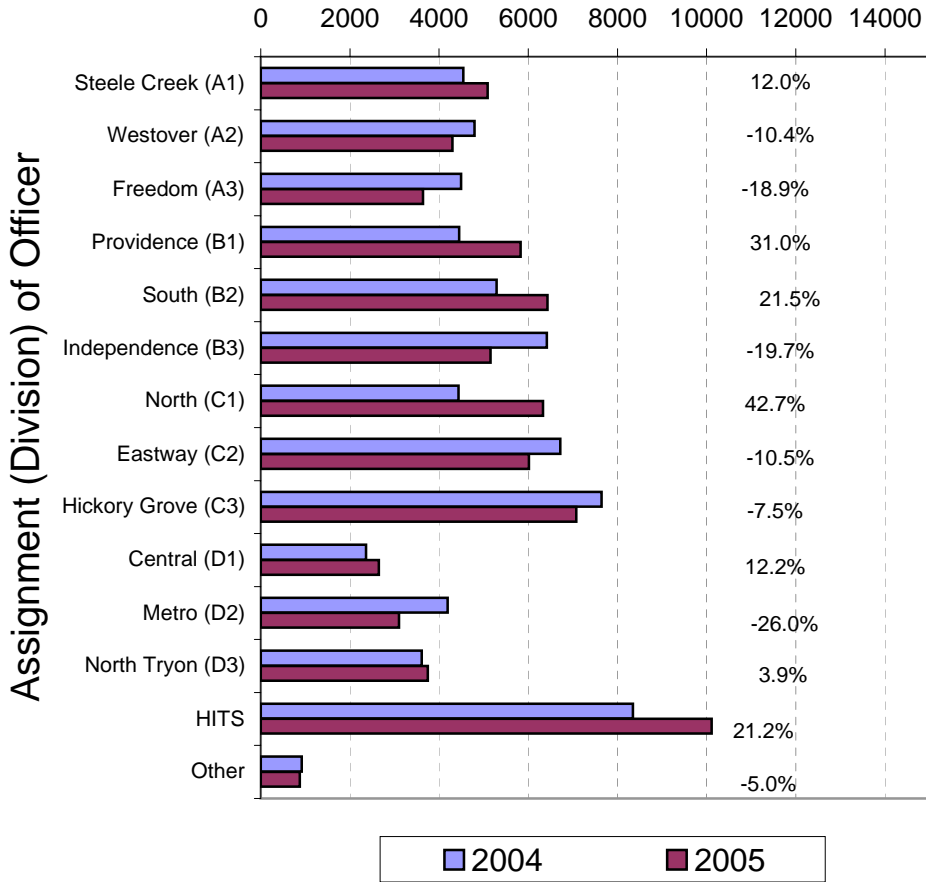
Total Citation Enforcement by Month Charlotte-Mecklenburg Police Dept.: 2003-2005



CMPD Citation Enforcement by Category Year-to-Date, 2004 - 2005 (Through August, 2005)



**Citations Issued Year-to-Date by CMPD Divisions
2004 - 2005
(Through August, 2005)**

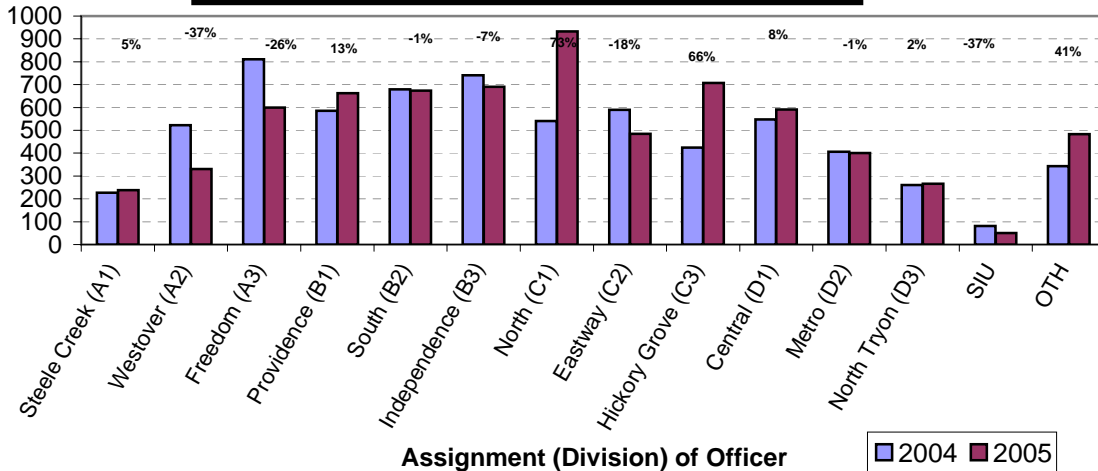


Note: 2003 and 2004 data for HITS and Other was adjusted in April, 2004.

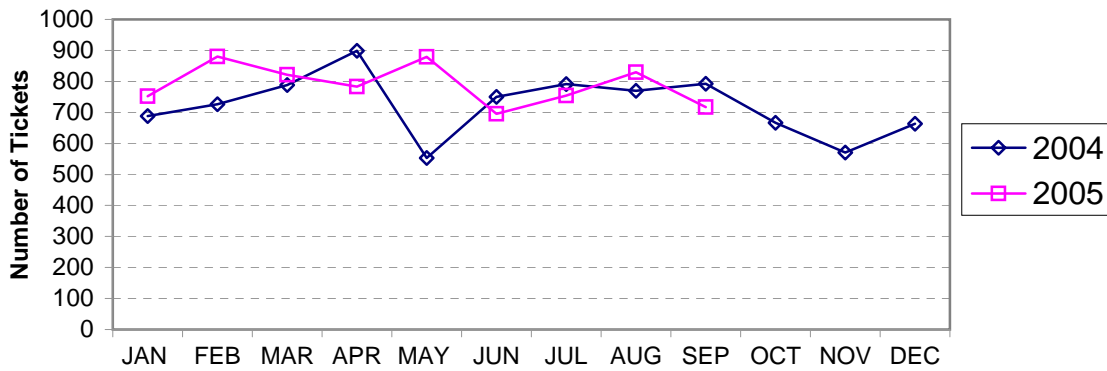
Citations Issued by the Charlotte Mecklenburg Police Officers Year-to-Date (Through August, 2005)			
Total Citations	2004	2005	% Change
Hazardous	26,891	28,469	5.9%
Non-Hazardous	27,839	28,789	3.4%
Other City/State Statute/Ordinance	13,480	13,084	-2.9%
Total	68,210	70,342	3.1%

"Safe Speed" Program: 2005 (Through August, 2005)	
Total Citations	27917
(Citations issued through the "Safe Speed" program are not included in the CMPD citation totals used in the summary chart above or in the other citation charts.)	

**Warning Tickets Issued by CMPD Division
Year-to-Date, 2004 - 2005
Through September,**



**Total Warning Tickets Issued by CMPD
By Month: 2004 - 2005**



**Warning Tickets Issued by CMPD Year-to-Date
Through September, 2005**

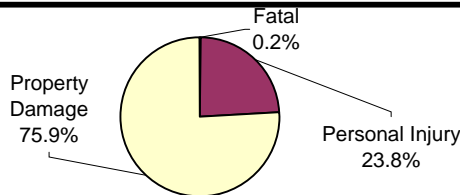
	2004	2005	% Change
Total Warning Tickets	6760	7112	5.2%

**Traffic Collision Reports
Charlotte-Mecklenburg Police Department
Year-to-Date: 2004-2005
(Through September)**

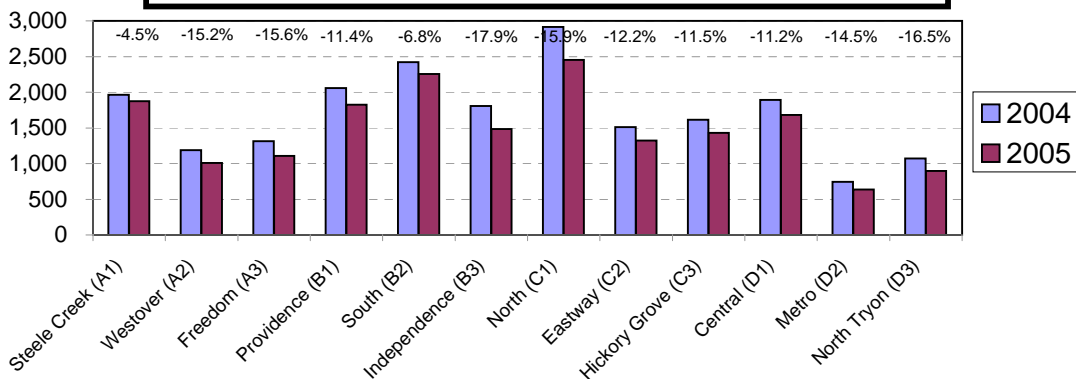
<u>Type</u>	<u>2004</u>	<u>2005</u>	<u>% Change</u>
Fatal Collisions	29	39	34.5%
Vehicle Occupants Killed	26	36	38.5%
Pedestrians Killed	4	4	0.0%
Personal Injury Collisions	5096	4265	-16.0%
Property Damage Collisions	15426	13707	-11.1%
Total Collisions	20551	18011	-12.4%

* The number of fatal collisions and the number of persons killed (fatalities) in those incidents is taken from the HITS file. Their records are updated for deaths that occur after the initial report is filed.

**Traffic Collisions Reported by Type
Charlotte-Mecklenburg Police Department:
2005 Year-to-Date
(Through September)**



**Traffic Collisions Reported by Charlotte-Mecklenburg Police Dept.
Year-to-Date By Location (Division) : 2004 -2005
(Through September)**



Uniform Crime Reporting Procedures:

The Charlotte-Mecklenburg Police Department reports offense and arrest statistics in accordance with standard Uniform Crime Reporting (UCR) guidelines. UCR policy states that any adjustments to previous months can be made on the current month's report:

...In tabulating crime counts, an agency may find that offense totals for past months require adjustments due to developments in the investigation or other handling of the matter. It may be necessary to adjust totals reported to UCR for the past month or prior months. Needed adjustments can be made on the current month's report and do not affect the reliability of the figures in that such adjustments tend to equalize each other from month to month over a period of time.

- *Uniform Crime Reporting Handbook*, FBI, 1984, p. 42-43

We are required to report crime monthly to the UCR program, and we do therefore make an effort to process monthly changes in a timely manner. However, occasionally due to the review and processing required for reclassifying, unfounding or clearing cases, the current month's totals may reflect the processing of a backlog of these changes from previous months.

Users of the data are cautioned that conclusions about substantial changes in crime trends or in clearance rates based on only a single month's data or trend may reflect some of these adjustments. For this reason, in addition to the monthly and year-to-date trends on Page 1, the monthly report routinely includes a comparison for the previous 12 months (p. 4), as well as graphs that provide seasonal/monthly comparisons over a five-year period (p. 5-8).

This report was compiled by the Research, Planning, and Analysis Division with assistance of volunteer Doris Bowen.

We make an effort to present the most accurate information available at the time this report is published. Please notify the Research, Planning, and Analysis office if you have any questions about the data in this report or about an error that was missed in proofing the report.

The division names adopted in 2003 are used in this report; the old district designations are shown in parentheses.