



**CHARLOTTE-MECKLENBURG POLICE DEPARTMENT
MONTHLY SUMMARY REPORT
JULY, 2005**

**Darrel Stephens
Chief of Police**

INDEX OFFENSES REPORTED TO CHARLOTTE-MECKLENBURG POLICE DEPARTMENT

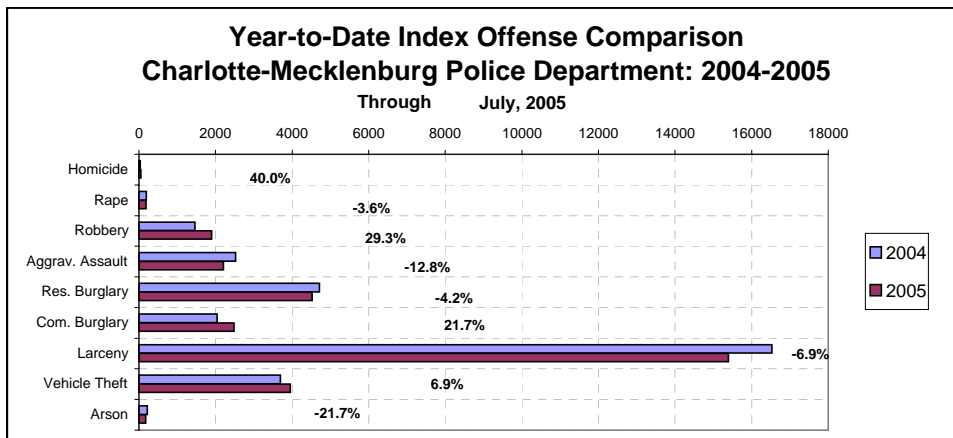
July, 2005 INDEX OFFENSES	# THIS MONTH	% OF ALL INDEX	# LAST MONTH	MONTHLY % CHANGE	SAME MONTH LAST YEAR	MONTHLY % CHANGE	THIS YEAR TO DATE	LAST YEAR TO DATE	ANNUAL % CHANGE
HOMICIDE (MURDER & NON-NEGLIGENT MANSLAUGHTER)	12	0.3%	10	20.0%	6	100.0%	49	35	40.0%
RAPE TOTAL	30	0.6%	30	0.0%	38	-21.1%	187	194	-3.6%
ACTUAL	29	0.6%	28	3.6%	34	-14.7%	176	180	-2.2%
ATTEMPT	1	0.0%	2	-50.0%	4	-75.0%	11	14	-21.4%
ROBBERY TOTAL	316	6.7%	288	9.7%	292	8.2%	1895	1466	29.3%
ARMED	247	5.2%	240	2.9%	235	5.1%	1522	1127	35.0%
STRONG-ARM	69	1.5%	48	43.8%	57	21.1%	373	339	10.0%
AGGRAVATED ASSAULT TOTAL	385	8.1%	381	1.0%	450	-14.4%	2202	2526	-12.8%
BURGLARY TOTAL	1046	22.1%	1041	0.5%	1082	-3.3%	6999	6755	3.6%
RESIDENTIAL	682	14.4%	652	4.6%	743	-8.2%	4518	4717	-4.2%
COMMERCIAL	364	7.7%	389	-6.4%	339	7.4%	2481	2038	21.7%

FORCE	860	18.2%	817	5.3%	883	-2.6%	5710	5420	5.4%
NO FORCE	120	2.5%	165	-27.3%	143	-16.1%	845	933	-9.4%
ATTEMPT	66	1.4%	59	11.9%	56	17.9%	444	402	10.4%
LARCENY TOTAL	2316	48.9%	2326	-0.4%	2662	-13.0%	15396	16533	-6.9%
\$200 AND OVER	1146	24.2%	1112	3.1%	1311	-12.6%	7566	8058	-6.1%
\$50 TO \$200	437	9.2%	493	-11.4%	468	-6.6%	3013	3007	0.2%
UNDER \$50	733	15.5%	721	1.7%	883	-17.0%	4817	5468	-11.9%

FROM AUTO	1144	24.2%	1137	0.6%	1387	-17.5%	7686	8444	-9.0%
BICYCLE	32	0.7%	31	3.2%	35	-8.6%	125	140	-10.7%
SHOPLIFTING	227	4.8%	236	-3.8%	250	-9.2%	1503	1734	-13.3%
OTHERS	913	19.3%	922	-1.0%	990	-7.8%	6082	6215	-2.1%
VEHICLE THEFT TOTAL	600	12.7%	553	8.5%	703	-14.7%	3950	3695	6.9%
ARSON TOTAL	31	0.7%	24	29.2%	38	-18.4%	173	221	-21.7%
TOTALS	4736	100.0%	4653	1.8%	5271	-10.1%	30851	31425	-1.8%
VIOLENT PROPERTY	743	15.7%	709	4.8%	786	-5.5%	4333	4221	2.7%
PROPERTY	3993	84.3%	3944	1.2%	4485	-11.0%	26518	27204	-2.5%

NOTE: Internal robbery breakdowns by armed and strong-arm in October, 2004, reflect the late reclassification of some cases from previous months from armed robbery to strong-arm robbery.

NOTE: These totals include offenses reported to the Charlotte-Mecklenburg Police Department in accordance with the Uniform Crime Reporting Program. Totals for homicide do not include cases investigated by the police but classed by UCR guidelines as negligent manslaughter or as "justifiable homicide."

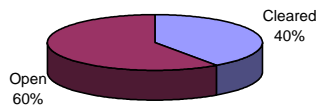


INDEX CLEARANCES REPORTED BY THE CHARLOTTE-MECKLENBURG POLICE DEPARTMENT

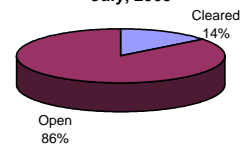
July, 2005 INDEX CLEARANCES	THIS MONTH:		LAST MONTH:		SAME MO. LAST YR:		THIS YEAR TO DATE:		LAST YEAR TO DATE:	
	NO.	%	NO.	%	NO.	%	NO.	%	NO.	%
MURDER & NON-NEGLIGENT MANSLAUGHTER	1	8.3%	5	50.0%	2	33.3%	17	34.7%	14	40.0%
RAPE TOTAL	21	70.0%	27	90.0%	1	2.6%	151	80.7%	106	54.6%
ACTUAL	20	69.0%	25	89.3%	0	0.0%	145	82.4%	96	53.3%
ATTEMPT	1	100.0%	2	100.0%	1	25.0%	16	145.5%	10	71.4%
ROBBERY TOTAL	76	24.1%	51	17.7%	19	6.5%	439	23.2%	390	26.6%
ARMED	63	25.5%	37	15.4%	16	6.8%	339	22.3%	290	25.7%
STRONG-ARM	13	18.8%	14	29.2%	3	5.3%	100	26.8%	100	29.5%
AGGRAVATED ASSAULT TOTAL	222	57.7%	171	44.9%	137	30.4%	1140	51.8%	1224	48.5%
BURGLARY TOTAL	102	9.8%	120	11.5%	73	6.7%	826	11.8%	741	11.0%
RESIDENTIAL	68	10.0%	95	14.6%	54	7.3%	647	14.3%	610	12.9%
COMMERCIAL	34	9.3%	25	6.4%	19	5.6%	179	7.2%	131	6.4%
LARCENY TOTAL	362	15.6%	317	13.6%	215	8.1%	2307	15.0%	2229	13.5%
FROM AUTO	36	3.1%	26	2.3%	22	1.6%	307	4.0%	243	2.9%
BICYCLE	5	15.6%	4	12.9%	3	8.6%	18	14.4%	10	7.1%
SHOPLIFTING	158	69.6%	145	61.4%	130	52.0%	1019	67.8%	1059	61.1%
OTHERS	163	17.9%	142	15.4%	60	6.1%	963	15.8%	917	14.8%
VEHICLE THEFT TOTAL	103	17.2%	72	13.0%	105	14.9%	653	16.5%	686	18.6%
ARSON TOTAL	5	16.1%	13	54.2%	5	13.2%	39	22.5%	59	26.7%
TOTALS	892	18.8%	776	16.7%	557	10.6%	5572	18.1%	5449	17.3%
VIOLENT PROPERTY	320	43.1%	254	35.8%	159	20.2%	1747	40.3%	1734	41.1%
	572	14.3%	522	13.2%	398	8.9%	3825	14.4%	3715	13.7%

NOTE: Clearances are reported in accordance with Uniform Crime Report guidelines. Since clearances are not counted until they are entered in the any delays in entry of the documentation may result in some clearances being reported in succeeding months.
Clearances for three additional homicides from 1987 - 1989 are not included in the homicide clearance totals for Jan-Jul, 2005; the homicide clearance rate with those included is 40.8%.

**Year-to-Date Violent Index Clearance Rate
Charlotte-Mecklenburg Police Department: 2004
July, 2005**

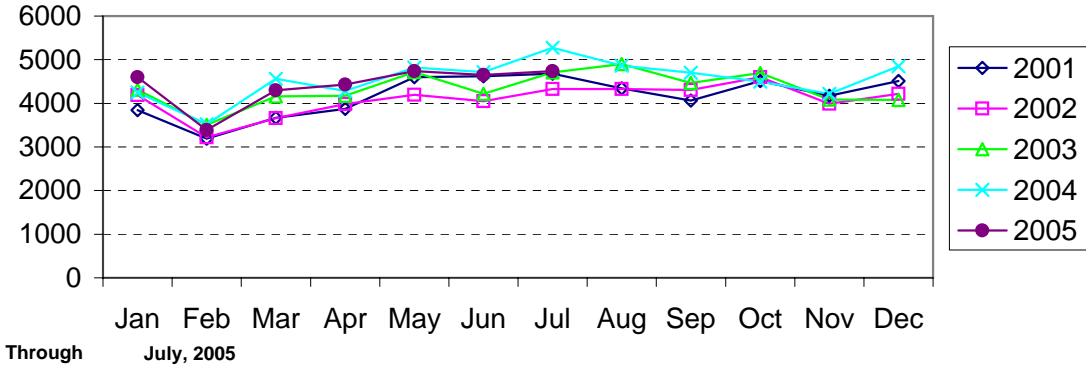


**Year-to-Date Property Index Clearance Rate
Charlotte-Mecklenburg Police Department: 2004
July, 2005**

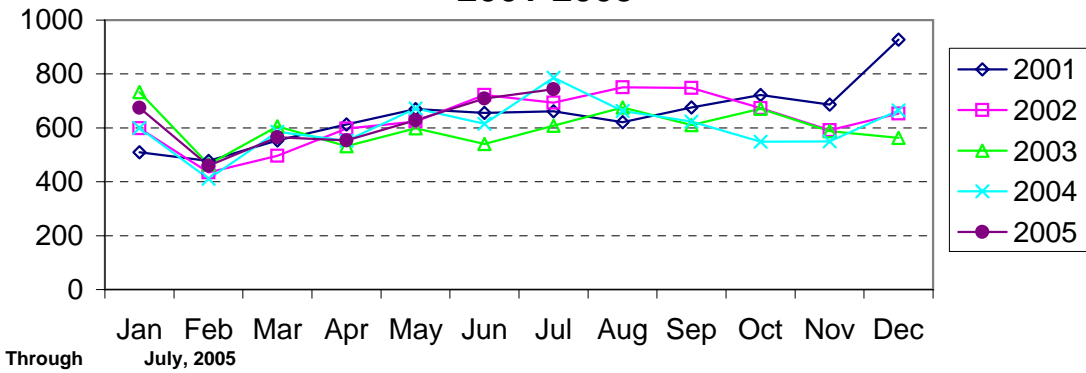


Clearance rates for crime reporting are calculated by dividing the number of crimes cleared during a designated time span by the number of crimes reported in the same period and converting the result to a percentage (multiplying by 100). Since cases from previous reporting periods can be cleared during the designated time span, the rate may be higher than 100%.

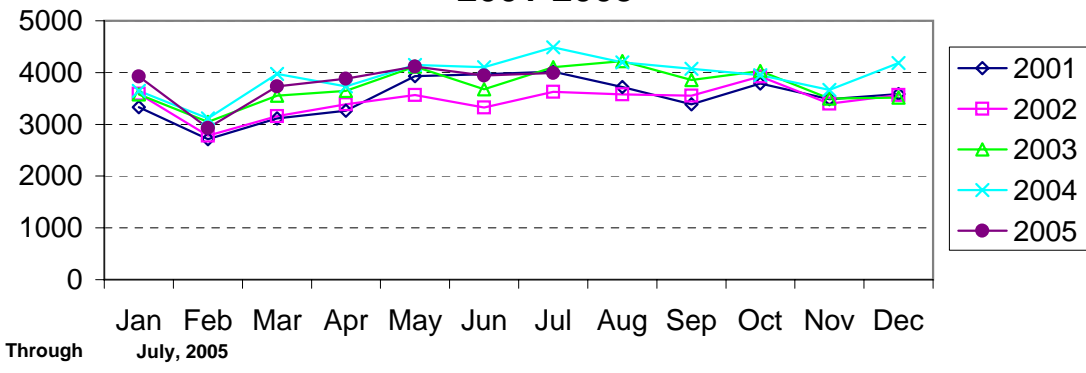
Index Offenses Reported by Month Charlotte-Mecklenburg Police Department: 2001-2005



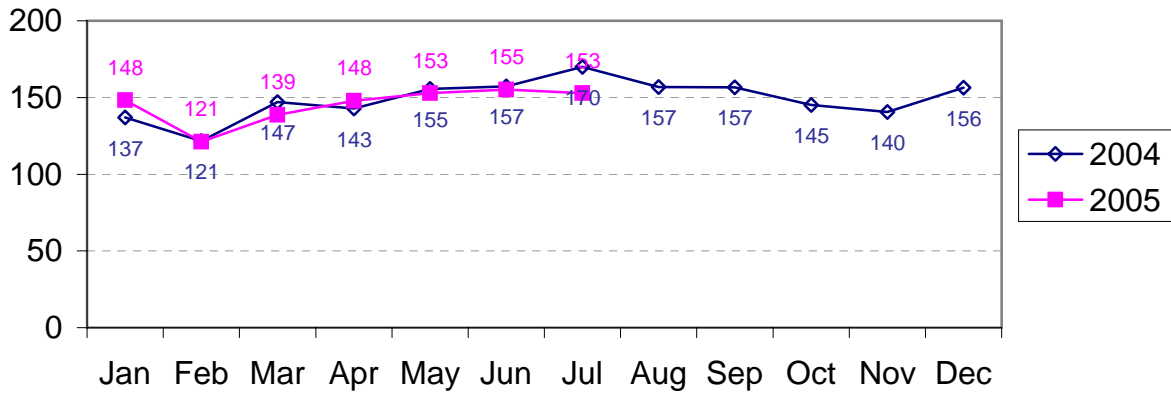
Violent Index Offenses Reported by Month Charlotte-Mecklenburg Police Department: 2001-2005



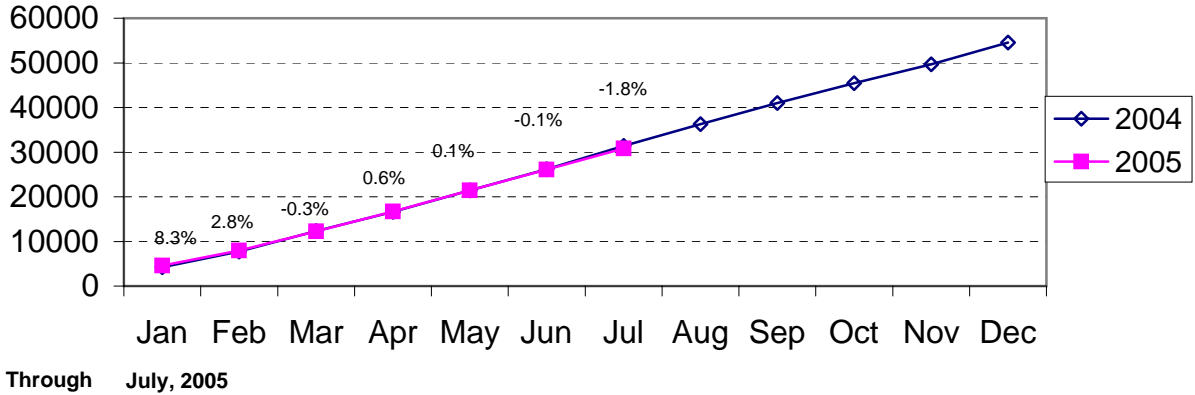
Property Index Offenses Reported by Month Charlotte-Mecklenburg Police Department: 2001-2005



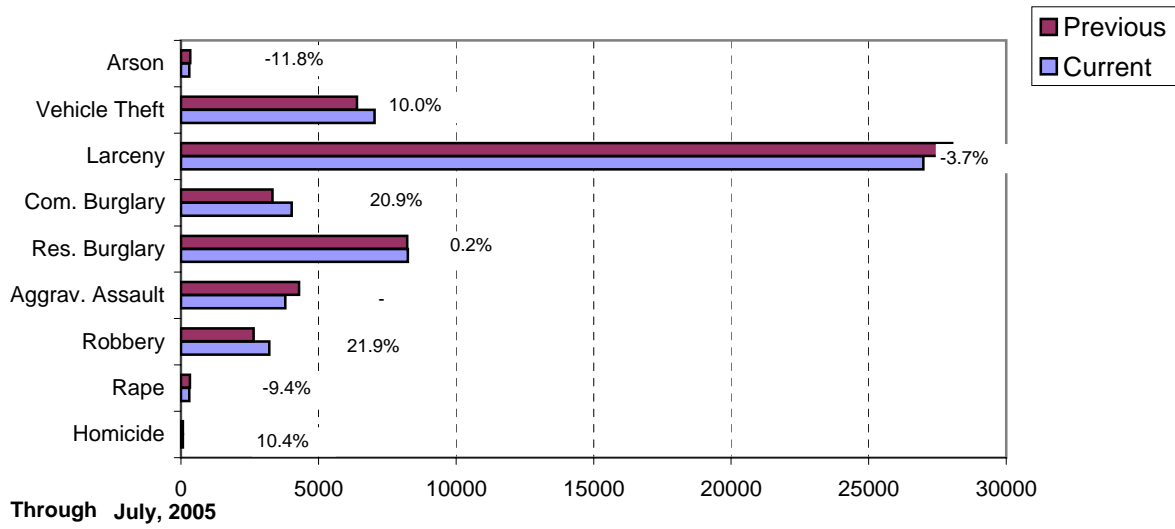
Index Offense Per Day Average by Month Charlotte-Mecklenburg Police Department: 2004-2005



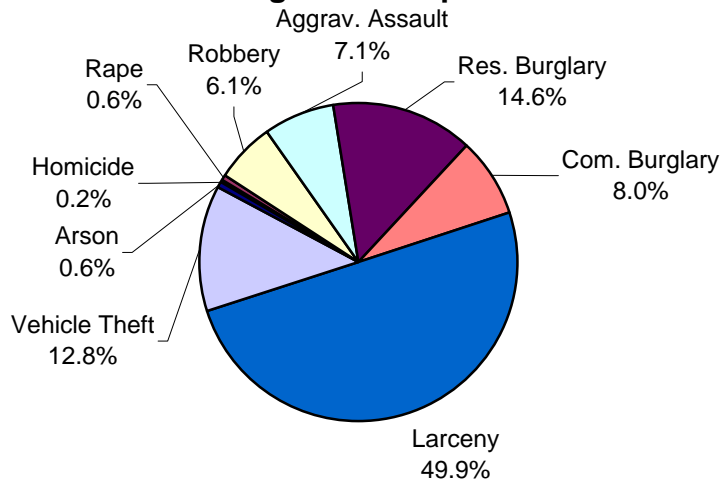
Index Offenses Year-to-Date Cumulative Totals Charlotte-Mecklenburg Police Department: 2004-2005



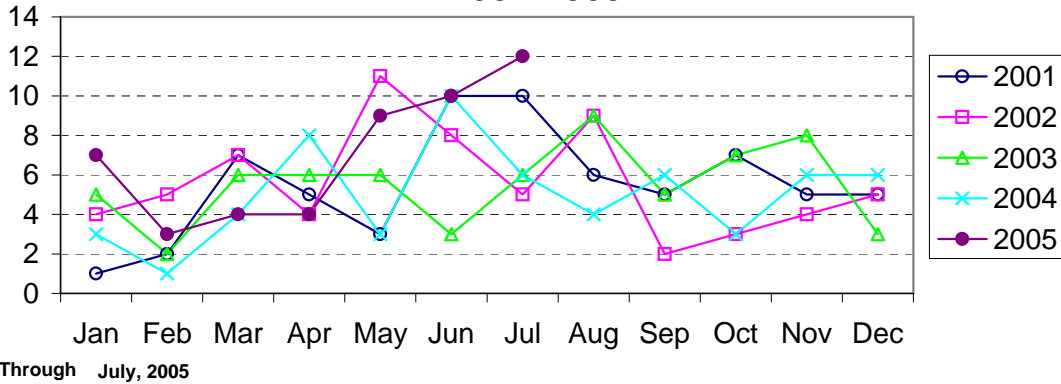
Index Offenses in Current and Previous 12 Months Charlotte-Mecklenburg Police Department



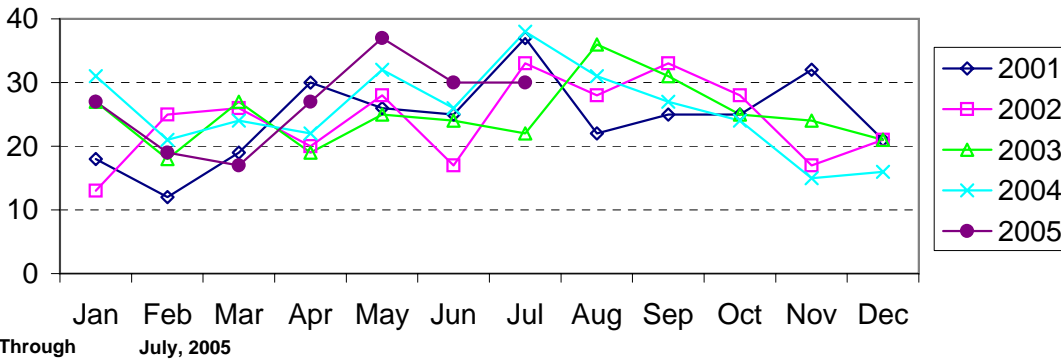
Year-to-Date Index Offenses by Type Charlotte-Mecklenburg Police Department: 2005



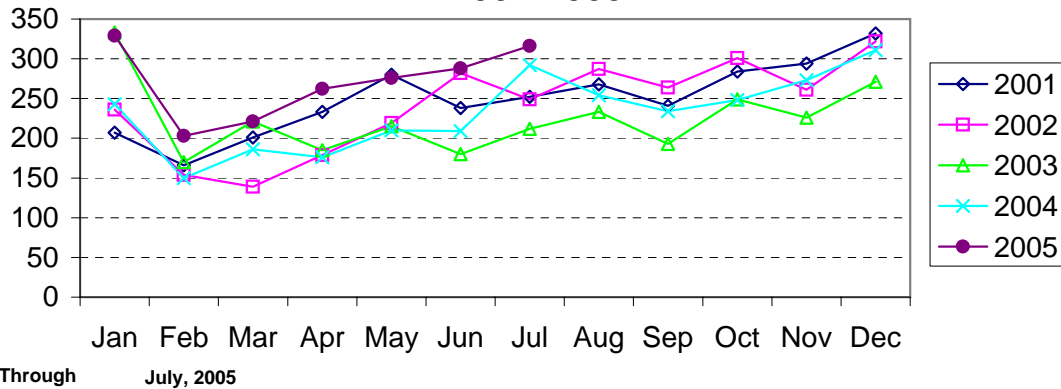
Homicide Reported by Month Charlotte-Mecklenburg Police Department: 2001-2005



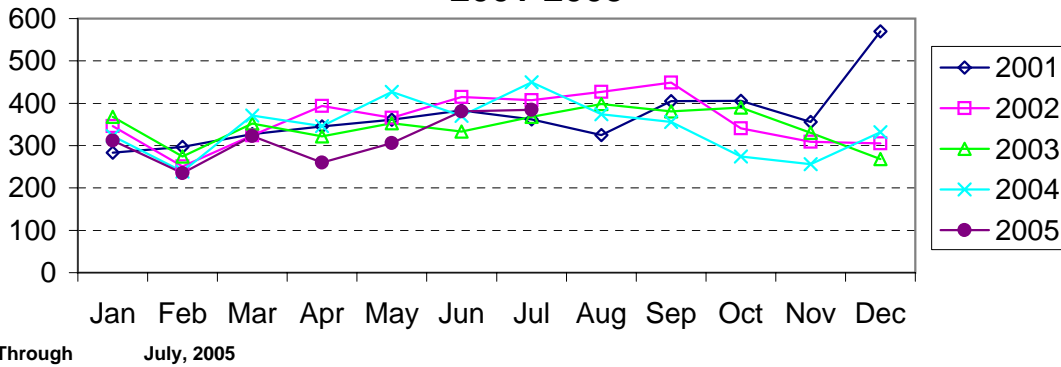
Rape Reported by Month Charlotte-Mecklenburg Police Department: 2001-2005



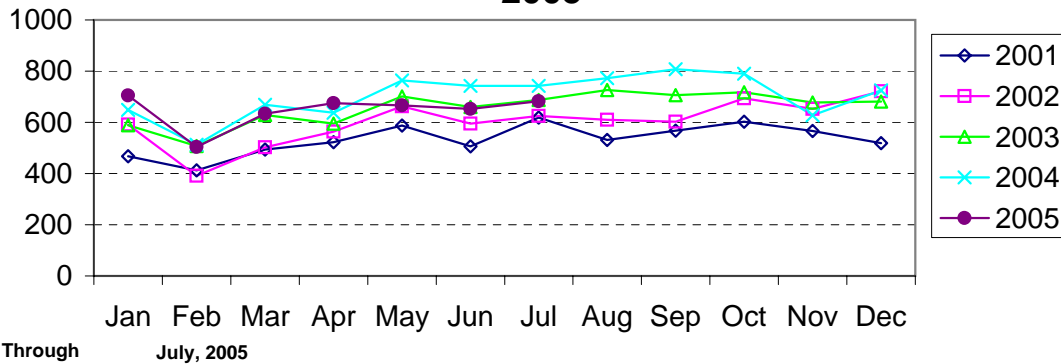
Robbery Reported by Month Charlotte-Mecklenburg Police Department: 2001-2005



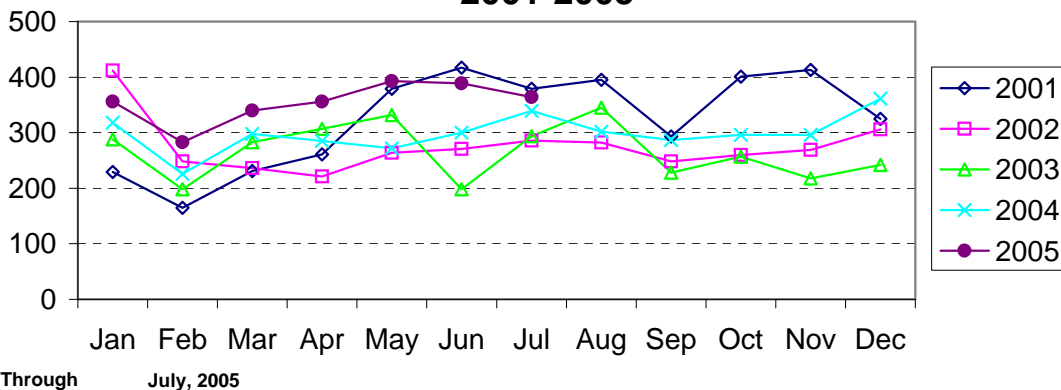
**Aggravated Assault Reported by Month
Charlotte-Mecklenburg Police Department:
2001-2005**



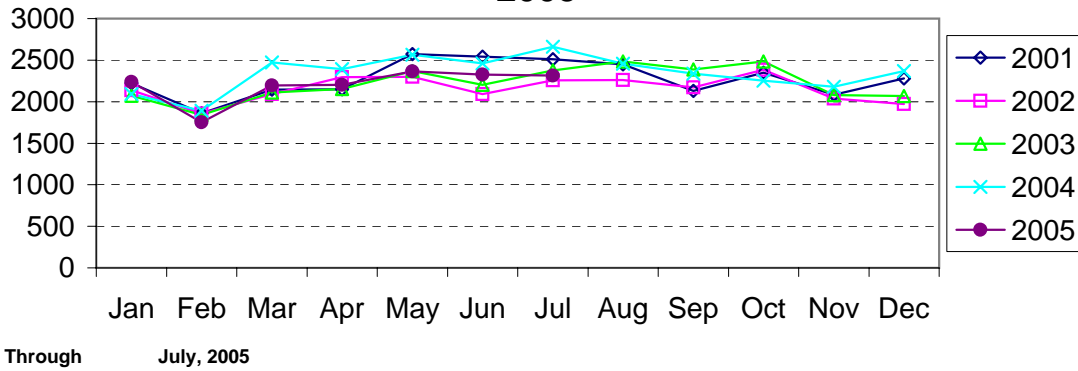
**Residential Burglary Reported by Month
Charlotte-Mecklenburg Police Department: 2001-
2005**



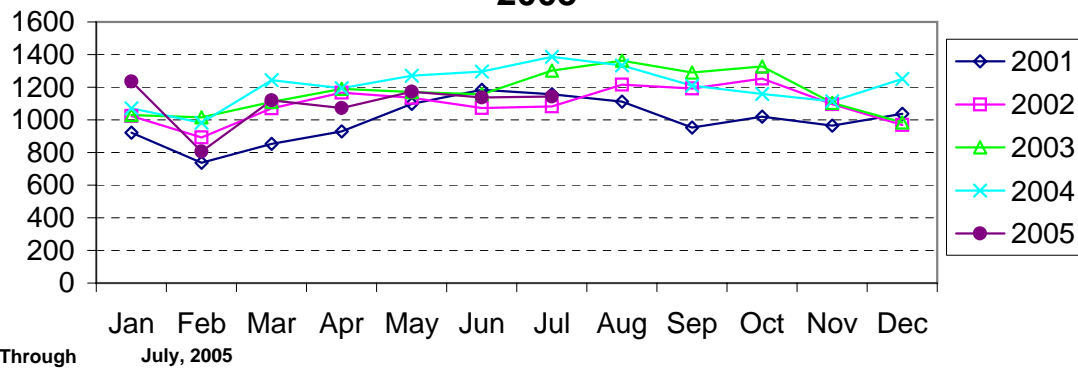
**Commercial Burglary Reported by Month
Charlotte-Mecklenburg Police Department:
2001-2005**



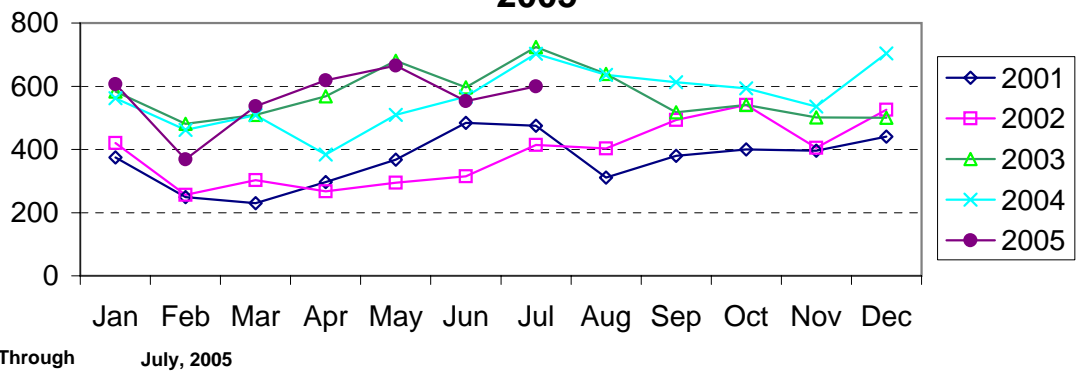
Larceny Reported by Month Charlotte-Mecklenburg Police Department: 2001-2005



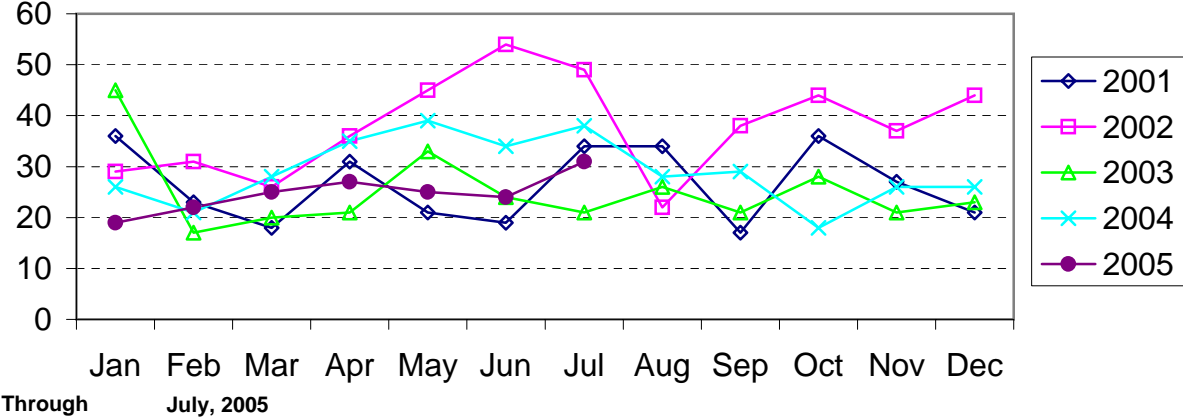
Larceny from Vehicle Reported by Month Charlotte-Mecklenburg Police Department: 2001-2005



Vehicle Theft Reported by Month Charlotte-Mecklenburg Police Department: 2001-2005



Arson Reported by Month Charlotte-Mecklenburg Police Department: 2001-2005



Index Offenses Reported by Division and Service Area of Occurrence									
West Service Area: Jan-Jul, 2004-2005									
INDEX_CATEGORIES	Westover (A2)			Freedom (A3)			West Service Area		
	2004	2005	% Change	2004	2005	% Change	2004	2005	% Change
MURDER & NON-NEGLIGENT MANSLAUGHTER	1	3	200.0%	3	8	166.7%	4	11	175.0%
RAPE	17	15	-11.8%	17	16	-5.9%	34	31	-8.8%
ACTUAL	17	14	-17.6%	17	15	-11.8%	34	29	-14.7%
ATTEMPTED	0	1	NA	0	1	NA	0	2	NA
ROBBERY	109	146	33.9%	168	252	50.0%	277	398	43.7%
ARMED	83	116	39.8%	126	223	77.0%	209	339	62.2%
STRONG-ARM	26	30	15.4%	42	29	-31.0%	68	59	-13.2%
AGGRAVATED ASSAULT	221	274	24.0%	293	281	-4.1%	514	555	8.0%
BURGLARY	503	566	12.5%	963	965	0.2%	1466	1531	4.4%
RESIDENTIAL	345	313	-9.3%	672	591	-12.1%	1017	904	-11.1%
COMMERCIAL	158	253	60.1%	291	374	28.5%	449	627	39.6%
LARCENY	1011	1021	1.0%	1607	1423	-11.4%	2618	2444	-6.6%
FROM AUTO	516	481	-6.8%	777	636	-18.1%	1293	1117	-13.6%
BICYCLE	10	3	-70.0%	7	10	42.9%	17	13	-23.5%
SHOPLIFTING	86	82	-4.7%	161	126	-21.7%	247	208	-15.8%
OTHERS	399	455	14.0%	662	651	-1.7%	1061	1106	4.2%
VEHICLE THEFT	236	302	28.0%	402	378	-6.0%	638	680	6.6%
ARSON	17	14	-17.6%	23	23	0.0%	40	37	-7.5%
TOTALS	2115	2341	10.7%	3476	3346	-3.7%	5591	5687	1.7%
VIOLENT PROPERTY	348 1767	438 1903	25.9% 7.7%	481 2995	557 2789	15.8% -6.9%	829 4762	995 4692	20.0% -1.5%

Index Offenses Reported by Division and Service Area of Occurrence									
Southeast Service Area: Jan-Jul, 2004-2005									
INDEX_CATEGORIES	Providence (B1)			Independence (B3)			Southeast Service Area		
	2004	2005	% Change	2004	2005	% Change	2004	2005	% Change
MURDER & NON-NEGLIGENT MANSLAUGHTER	2	3	50.0%	2	4	100.0%	4	7	75.0%
RAPE	11	12	9.1%	12	16	33.3%	23	28	21.7%
ACTUAL	11	12	9.1%	11	14	27.3%	22	26	18.2%
ATTEMPTED	0	0	NA	1	2	100.0%	1	2	100.0%
ROBBERY	79	72	-8.9%	119	153	28.6%	198	225	13.6%
ARMED	60	55	-8.3%	97	127	30.9%	157	182	15.9%
STRONG-ARM	19	17	-10.5%	22	26	18.2%	41	43	4.9%
AGGRAVATED ASSAULT	106	74	-30.2%	208	164	-21.2%	314	238	-24.2%
BURGLARY	491	525	6.9%	581	542	-6.7%	1072	1067	-0.5%
RESIDENTIAL	283	343	21.2%	441	421	-4.5%	724	764	5.5%
COMMERCIAL	208	182	-12.5%	140	121	-13.6%	348	303	-12.9%
LARCENY	1115	1120	0.4%	1307	1338	2.4%	2422	2458	1.5%
FROM AUTO	493	487	-1.2%	732	720	-1.6%	1225	1207	-1.5%
BICYCLE	13	13	0.0%	10	9	-10.0%	23	22	-4.3%
SHOPLIFTING	115	138	20.0%	97	144	48.5%	212	282	33.0%
OTHERS	494	482	-2.4%	468	465	-0.6%	962	947	-1.6%
VEHICLE THEFT	185	181	-2.2%	375	436	16.3%	560	617	10.2%
ARSON	8	7	-12.5%	21	21	0.0%	29	28	-3.4%
TOTALS	1997	1994	-0.2%	2625	2674	1.9%	4622	4668	1.0%
VIOLENT PROPERTY	198 1799	161 1833	-18.7% 1.9%	341 2284	337 2337	-1.2% 2.3%	539 4083	498 4170	-7.6% 2.1%

The data in the district breakdowns does not include a small number of offenses in which the location of the offense was unknown or was entered without a valid tract assignment. Districts are not equal in geographic size, demographics, zoning/development, and other factors that influence the rate of crimes committed in an area. Therefore, the comparison of raw offense totals across districts is not advisable.

Index Offenses Reported by Division and Service Area of Occurrence									
Northeast Service Area: Jan-Jul, 2004-2005									
INDEX_CATEGORIES	North (C1)			Hickory Grove (C3)			Northeast Service Area		
	2004	2005	% Change	2004	2005	% Change	2004	2005	% Change
MURDER & NON-NEGLIGENT MANSLAUGHTER	4	9	125.0%	2	5	150.0%	6	14	133.3%
RAPE	27	21	-22.2%	23	23	0.0%	50	44	-12.0%
ACTUAL	25	19	-24.0%	20	21	5.0%	45	40	-11.1%
ATTEMPTED	2	2	0.0%	3	2	-33.3%	5	4	-20.0%
ROBBERY	123	144	17.1%	128	171	33.6%	251	315	25.5%
ARMED	99	123	24.2%	103	135	31.1%	202	258	27.7%
STRONG-ARM	24	21	-12.5%	25	36	44.0%	49	57	16.3%
AGGRAVATED ASSAULT	203	194	-4.4%	282	229	-18.8%	485	423	-12.8%
BURGLARY	900	891	-1.0%	683	883	29.3%	1583	1774	12.1%
RESIDENTIAL	633	594	-6.2%	537	553	3.0%	1170	1147	-2.0%
COMMERCIAL*	267	297	11.2%	146	330	126.0%	413	627	51.8%
LARCENY	2469	2487	0.7%	1274	1189	-6.7%	3743	3676	-1.8%
FROM AUTO	1402	1373	-2.1%	630	630	0.0%	2032	2003	-1.4%
BICYCLE	16	15	-6.3%	25	22	-12.0%	41	37	-9.8%
SHOPLIFTING	203	225	10.8%	91	108	18.7%	294	333	13.3%
OTHERS	848	874	3.1%	528	429	-18.8%	1376	1303	-5.3%
VEHICLE THEFT	473	550	16.3%	404	439	8.7%	877	989	12.8%
ARSON	31	27	-12.9%	32	22	-31.3%	63	49	-22.2%
TOTALS	4230	4323	2.2%	2828	2961	4.7%	7058	7284	3.2%
VIOLENT PROPERTY	357 3873	368 3955	3.1% 2.1%	435 2393	428 2533	-1.6% 5.9%	792 6266	796 6488	0.5% 3.5%

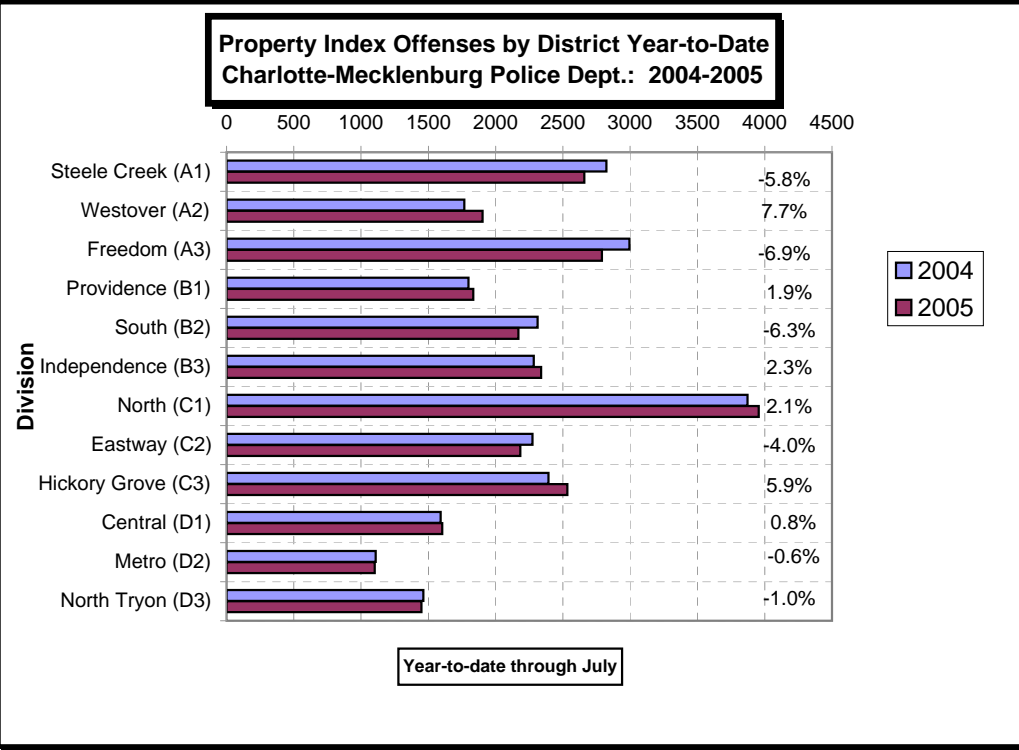
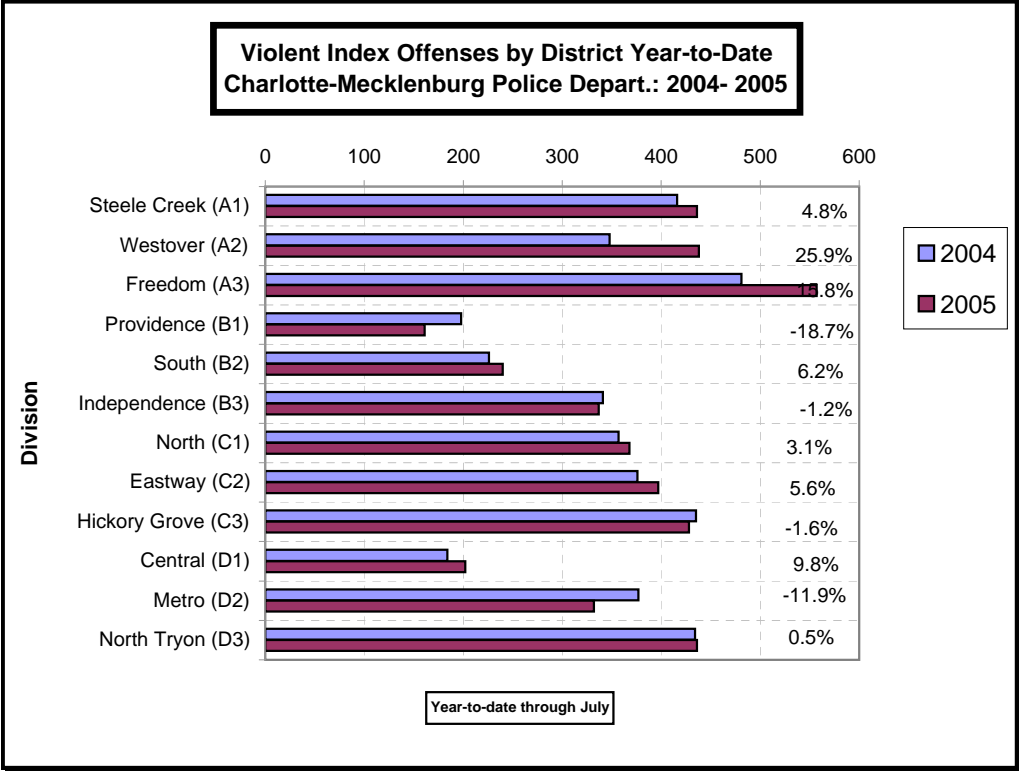
Index Offenses Reported by Division and Service Area of Occurrence									
Central Service Area: Jan-Jul, 2004-2005									
INDEX_CATEGORIES	Central (D1)			Metro (D2)			Central Service Area		
	2004	2005	% Change	2004	2005	% Change	2004	2005	% Change
MURDER & NON-NEGLIGENT MANSLAUGHTER	1	2	100.0%	6	6	0.0%	7	8	14.3%
RAPE	12	20	66.7%	15	4	-73.3%	27	24	-11.1%
ACTUAL	11	19	72.7%	14	5	-64.3%	25	24	-4.0%
ATTEMPTED	1	1	0.0%	1	-1	-200.0%	2	0	-100.0%
ROBBERY	71	109	53.5%	120	126	5.0%	191	235	23.0%
ARMED	40	65	62.5%	101	96	-5.0%	141	161	14.2%
STRONG-ARM	31	44	41.9%	19	30	57.9%	50	74	48.0%
AGGRAVATED ASSAULT	100	71	-29.0%	236	196	-16.9%	336	267	-20.5%
BURGLARY	217	215	-0.9%	350	366	4.6%	567	581	2.5%
RESIDENTIAL	87	73	-16.1%	253	282	11.5%	340	355	4.4%
COMMERCIAL	130	142	9.2%	97	84	-13.4%	227	226	-0.4%
LARCENY	1197	1197	0.0%	554	518	-6.5%	1751	1715	-2.1%
FROM AUTO	649	642	-1.1%	246	220	-10.6%	895	862	-3.7%
BICYCLE	10	16	60.0%	3	9	200.0%	13	25	92.3%
SHOPLIFTING	43	34	-20.9%	46	20	-56.5%	89	54	-39.3%
OTHERS	495	505	2.0%	259	269	3.9%	754	774	2.7%
VEHICLE THEFT	173	191	10.4%	193	206	6.7%	366	397	8.5%
ARSON	3	0	-100.0%	11	11	0.0%	14	11	-21.4%
TOTALS	1774	1805	1.7%	1485	1433	-3.5%	3259	3238	-0.6%
VIOLENT PROPERTY	184 1590	202 1603	9.8% 0.8%	377 1108	332 1101	-11.9% -0.6%	561 2698	534 2704	-4.8% 0.2%

*The Commercial Burglary total in the Hickory Grove Division in 2005 includes 2 incidents at mini-storage businesses where 50 and 65 units were entered or attempted; UCR requires counting each unit as a burglary. Districts are not equal in geographic size, demographics, zoning/development, and other factors that influence the rate of crimes committed in an area. Therefore, the comparison of raw offense totals across districts is not advisable.

Index Offenses Reported by Division and Service Area of Occurrence									
East Service Area: Jan-Jul, 2004-2005									
INDEX_CATEGORIES	Eastway (C2)			North Tryon (D3)			East Service Area		
	2004	2005	% Change	2004	2005	% Change	2004	2005	% Change
MURDER & NON-NEGLIGENT MANSLAUGHTER	3	2	-33.3%	6	3	-50.0%	9	5	-44.4%
RAPE	9	18	100.0%	13	9	-30.8%	22	27	22.7%
ACTUAL	6	17	183.3%	12	7	-41.7%	18	24	33.3%
ATTEMPTED	3	1	-66.7%	1	2	100.0%	4	3	-25.0%
ROBBERY	170	227	33.5%	159	194	22.0%	329	421	28.0%
ARMED	126	173	37.3%	121	155	28.1%	247	328	32.8%
STRONG-ARM	44	54	22.7%	38	39	2.6%	82	93	13.4%
AGGRAVATED ASSAULT	194	150	-22.7%	256	230	-10.2%	450	380	-15.6%
BURGLARY	550	574	4.4%	398	468	17.6%	948	1042	9.9%
RESIDENTIAL	381	417	9.4%	277	279	0.7%	658	696	5.8%
COMMERCIAL	169	157	-7.1%	121	192	58.7%	290	349	20.3%
LARCENY	1388	1290	-7.1%	794	731	-7.9%	2182	2021	-7.4%
FROM AUTO	480	482	0.4%	380	358	-5.8%	860	840	-2.3%
BICYCLE	18	12	-33.3%	8	4	-50.0%	26	16	-38.5%
SHOPLIFTING	472	333	-29.4%	66	42	-36.4%	538	375	-30.3%
OTHERS	418	463	10.8%	340	327	-3.8%	758	790	4.2%
VEHICLE THEFT	314	306	-2.5%	265	244	-7.9%	579	550	-5.0%
ARSON	22	14	-36.4%	6	5	-16.7%	28	19	-32.1%
TOTALS	2650	2581	-2.6%	1897	1884	-0.7%	4547	4465	-1.8%
VIOLENT PROPERTY	376 2274	397 2184	5.6% -4.0%	434 1463	436 1448	0.5% -1.0%	810 3737	833 3632	2.8% -2.8%

Index Offenses Reported by Division and Service Area of Occurrence									
South Service Area: Jan-Jul, 2004-2005									
INDEX_CATEGORIES	Steele Creek (A1)			South (B2)			South Service Area		
	2004	2005	% Change	2004	2005	% Change	2004	2005	% Change
MURDER & NON-NEGLIGENT MANSLAUGHTER	4	4	0.0%	1	0	-100.0%	5	4	-20.0%
RAPE	18	22	22.2%	13	10	-23.1%	31	32	3.2%
ACTUAL	16	22	37.5%	13	10	-23.1%	29	32	10.3%
ATTEMPTED	2	0	-100.0%	0	0	NA	2	0	-100.0%
ROBBERY	126	179	42.1%	81	122	50.6%	207	301	45.4%
ARMED	98	149	52.0%	64	105	64.1%	162	254	56.8%
STRONG-ARM	28	30	7.1%	17	17	0.0%	45	47	4.4%
AGGRAVATED ASSAULT	268	231	-13.8%	131	108	-17.6%	399	339	-15.0%
BURGLARY	507	509	0.4%	492	494	0.4%	999	1003	0.4%
RESIDENTIAL	361	308	-14.7%	382	346	-9.4%	743	654	-12.0%
COMMERCIAL	146	201	37.7%	110	148	34.5%	256	349	36.3%
LARCENY	1949	1705	-12.5%	1547	1377	-11.0%	3496	3082	-11.8%
FROM AUTO	1108	901	-18.7%	866	756	-12.7%	1974	1657	-16.1%
BICYCLE	11	6	-45.5%	9	6	-33.3%	20	12	-40.0%
SHOPLIFTING	257	147	-42.8%	87	104	19.5%	344	251	-27.0%
OTHERS	573	651	13.6%	585	511	-12.6%	1158	1162	0.3%
VEHICLE THEFT	344	433	25.9%	252	281	11.5%	596	714	19.8%
ARSON	23	13	-43.5%	22	16	-27.3%	45	29	-35.6%
TOTALS	3239	3096	-4.4%	2539	2408	-5.2%	5778	5504	-4.7%
VIOLENT PROPERTY	416 2823	436 2660	4.8% -5.8%	226 2313	240 2168	6.2% -6.3%	642 5136	676 4828	5.3% -6.0%

The data in the district breakdowns does not include a small number of offenses in which the location of the offense was unknown or was entered without a valid tract assignment. Districts are not equal in geographic size, demographics, zoning/development, and other factors that influence the rate of crimes committed in an area. Therefore, the comparison of raw offense totals across districts is not advisable.



The data in the district breakdowns does not include a small number of offenses in which the location of the offense was unknown or was entered without a valid tract assignment. Districts are not equal in geographic size, demographics, zoning/development, and other factors that influence the rate of crimes committed in an area. Therefore, the comparison of raw offense totals across districts is not advisable.

Arrests by Charlotte-Mecklenburg Police Department
Year-To-Date: 2004-2005
(Through July)

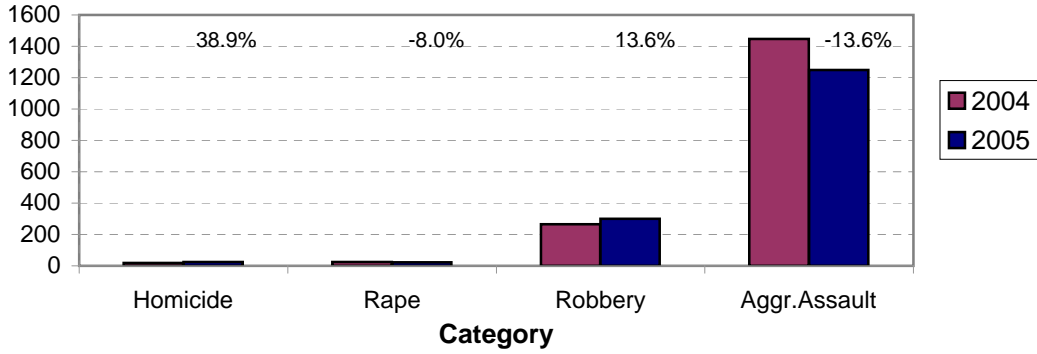
CATEGORY	ADULTS (AGE 18 & OLDER):			JUVENILES (UNDER 18):			TOTAL ARRESTS:		
	2004 Y-T-D	2005 Y-T-D	% CHANGE	2004 Y-T-D	2005 Y-T-D	% CHANGE	2004 Y-T-D	2005 Y-T-D	% CHANGE
Murder/Non-Negligent Manslaughter	18	23	27.8%	0	2	NA	18	25	38.9%
Negligent & Vehicular Manslaughter	3	3	0.0%	0	0	NA	3	3	0.0%
Rape	23	22	-4.3%	2	1	-50.0%	25	23	-8.0%
Robbery	179	237	32.4%	86	64	-25.6%	265	301	13.6%
Aggravated Assault	1252	1094	-12.6%	194	156	-19.6%	1446	1250	-13.6%
Burglary	325	366	12.6%	137	140	2.2%	462	506	9.5%
Larceny	907	898	-1.0%	372	307	-17.5%	1279	1205	-5.8%
Vehicle Theft	49	61	24.5%	94	64	-31.9%	143	125	-12.6%
Non-Aggravated Assault	1097	1174	7.0%	484	463	-4.3%	1581	1637	3.5%
Arson	11	6	-45.5%	19	18	-5.3%	30	24	-20.0%
Forgery/Counterfiet	82	81	-1.2%	2	2	0.0%	84	83	-1.2%
Fraud	320	333	4.1%	6	4	-33.3%	326	337	3.4%
Embezzlement	58	44	-24.1%	8	4	-50.0%	66	48	-27.3%
Stolen Property	283	280	-1.1%	61	73	19.7%	344	353	2.6%
Vandalism	138	123	-10.9%	120	142	18.3%	258	265	2.7%
Weapons	262	349	33.2%	37	42	13.5%	299	391	30.8%
Prostitution	189	166	-12.2%	8	2	-75.0%	197	168	-14.7%
Sex Offenses	119	104	-12.6%	8	16	100.0%	127	120	-5.5%
Drugs	1622	1564	-3.6%	146	160	9.6%	1768	1724	-2.5%
Gambling	12	2	-83.3%	0	0	NA	12	2	-83.3%
Offenses vs. Family	3	4	33.3%	1	0	-100.0%	4	4	0.0%
DUI	1163	1181	1.5%	7	5	-28.6%	1170	1186	1.4%
Liquor	129	105	-18.6%	6	5	-16.7%	135	110	-18.5%
Disorder Conduct	325	299	-8.0%	184	193	4.9%	509	492	-3.3%
Other Non-Traffic	4667	4696	0.6%	472	463	-1.9%	5139	5159	0.4%
VIOLENT INDEX¹	1472	1376	-6.5%	282	223	-20.9%	1754	1599	-8.8%
PROPERTY INDEX²	1292	1331	3.0%	622	529	-15.0%	1914	1860	-2.8%
INDEX SUBTOTAL	2764	2707	-2.1%	904	752	-16.8%	3668	3459	-5.7%
PART 2 SUBTOTAL³	10472	10508	0.3%	1550	1574	1.5%	12022	12082	0.5%
TOTAL	13236	13215	-0.2%	2454	2326	-5.2%	15690	15541	-0.9%

¹Violent Index includes murder and non-negligent manslaughter, rape, robbery, and aggravated assault.

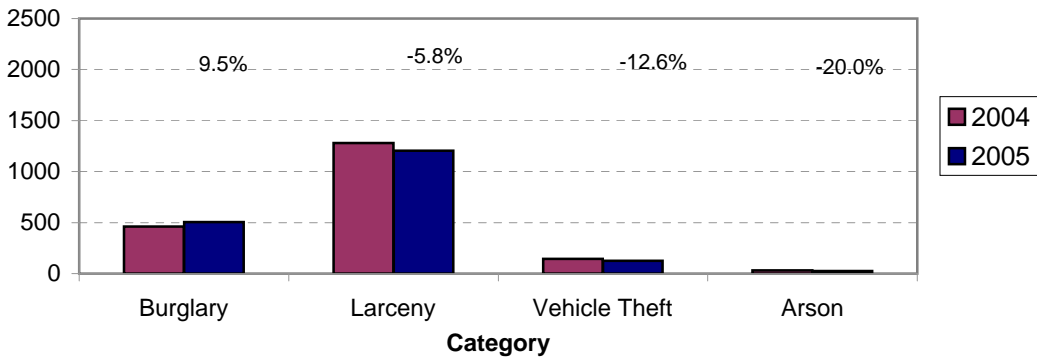
²Property Index includes burglary, larceny, vehicle theft, and arson.

³Part 2 crimes include crime categories not counted in the Index totals.

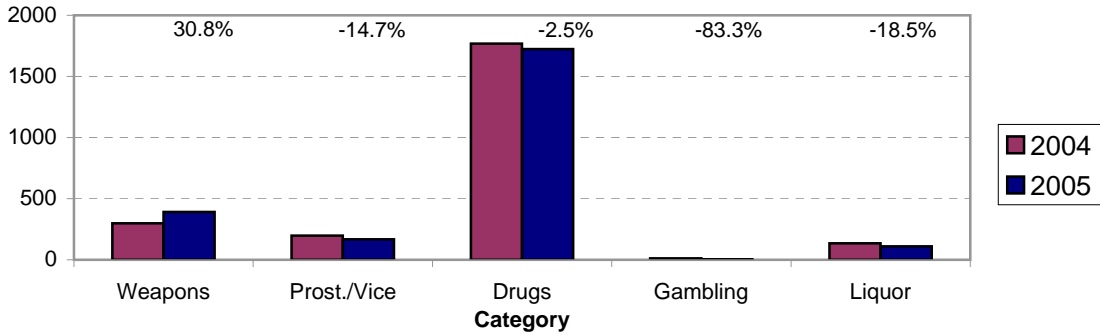
**Violent Index Arrests Year-to-Date
Charlotte-Mecklenburg Police Department: 2004-2005
(Through July)**



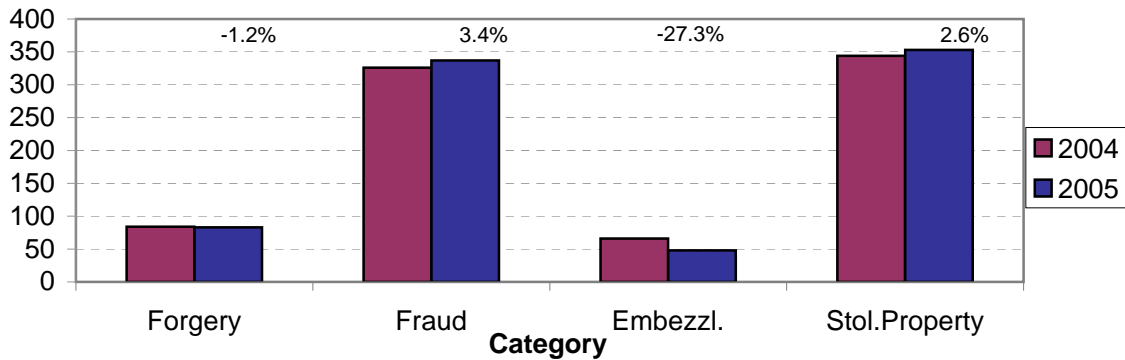
**Property Index Arrests Year-to-Date
Charlotte-Mecklenburg Police Department: 2004-2005
(Through July)**



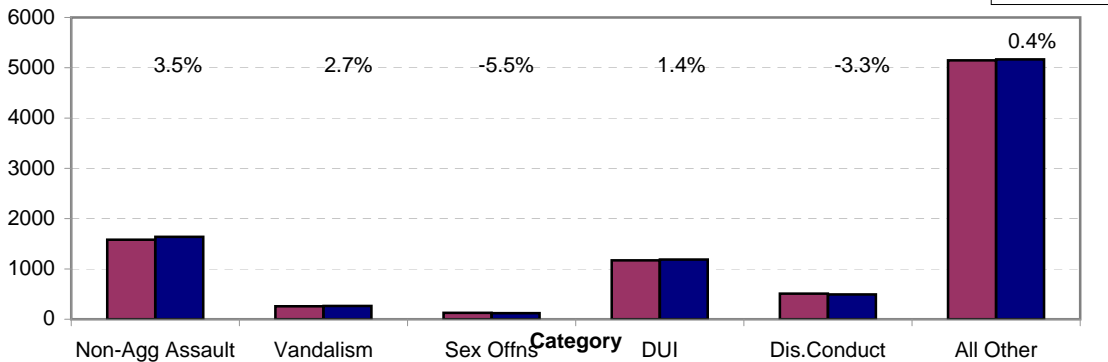
**Arrests for Vice/CCW/Drugs/Etc. Year-to-Date
Charlotte-Mecklenburg Police Department: 2004 - 2005
(Through July)**



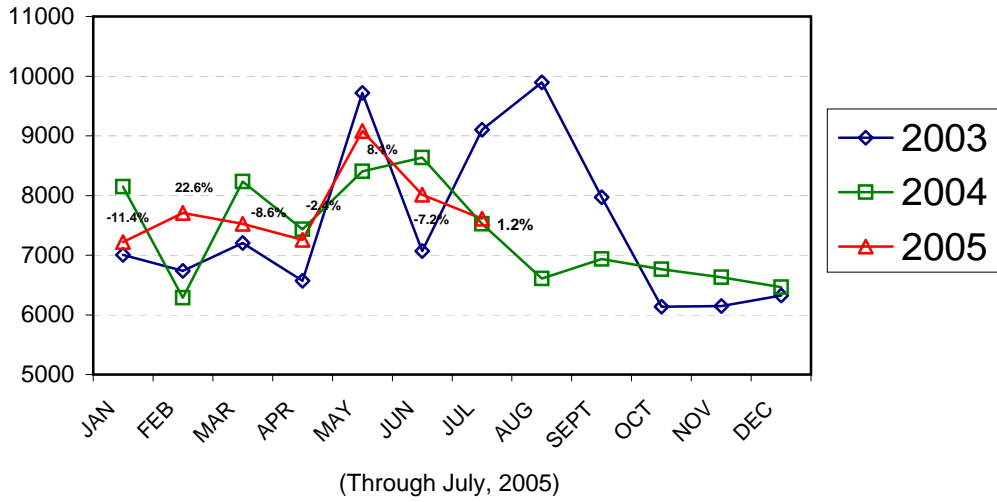
**Arrests for Property/White Collar Crime Year-to-Date
Charlotte-Mecklenburg Police Department: 2004- 2005
(Through July)**



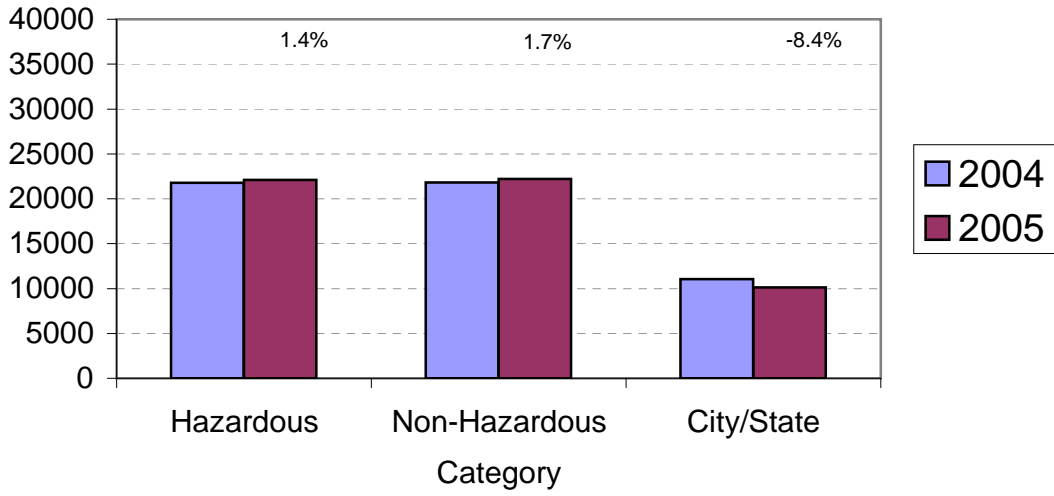
**Arrests for Other Categories Year-to-Date
Charlotte-Mecklenburg Police Department: 2004 - 2005
(Through July)**



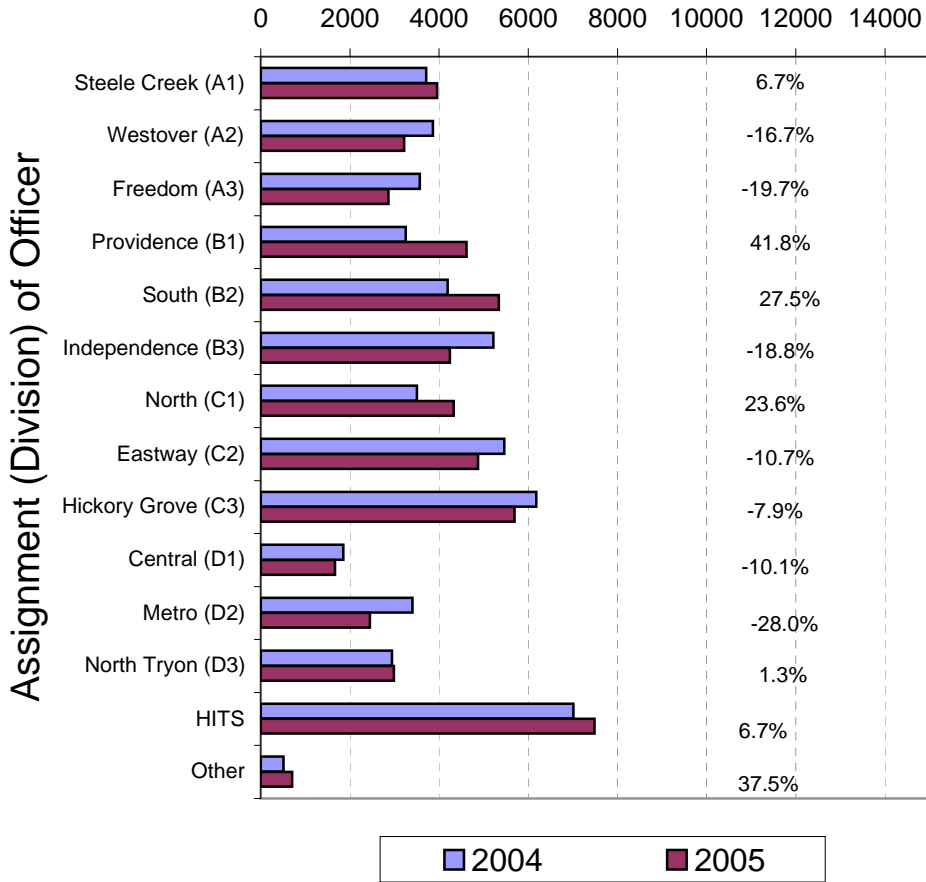
**Total Citation Enforcement by Month
Charlotte-Mecklenburg Police Dept.: 2003-2005**



**CMPD Citation Enforcement by Category
Year-to-Date, 2004 - 2005
(Through July, 2005)**



**Citations Issued Year-to-Date by CMPD Divisions
2004 - 2005
(Through July, 2005)**

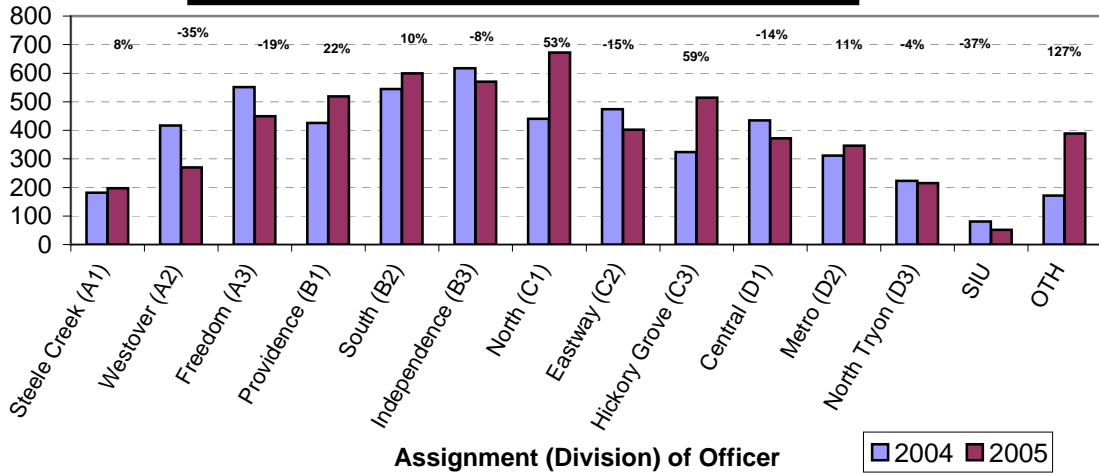


Note: 2003 and 2004 data for HITS and Other was adjusted in April, 2004.

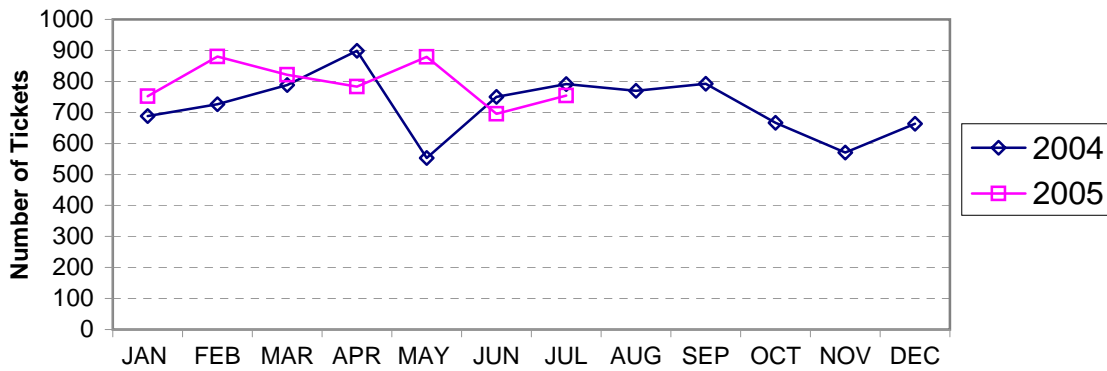
Citations Issued by the Charlotte Mecklenburg Police Officers Year-to-Date (Through July, 2005)			
Total Citations	2004	2005	% Change
Hazardous	21,785	22,091	1.4%
Non-Hazardous	21,826	22,200	1.7%
Other City/State Statute/Ordinance	11,052	10,122	-8.4%
Total	54,663	54,413	-0.5%

"Safe Speed" Program: 2005 (Through July, 2005)	
Total Citations	20845
(Citations issued through the "Safe Speed" program are not included in the CMPD citation totals used in the summary chart above or in the other citation charts.)	

**Warning Tickets Issued by CMPD Division
Year-to-Date, 2004 - 2005
Through July, 2005**



**Total Warning Tickets Issued by CMPD
By Month: 2004 - 2005**



**Warning Tickets Issued by CMPD Year-to-Date
Through July, 2005**

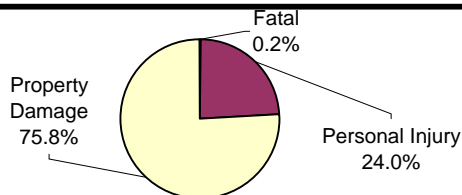
	2004	2005	% Change
Total Warning Tickets	5197	5565	7.1%

**Traffic Collision Reports
Charlotte-Mecklenburg Police Department
Year-to-Date: 2004-2005
(Through July)**

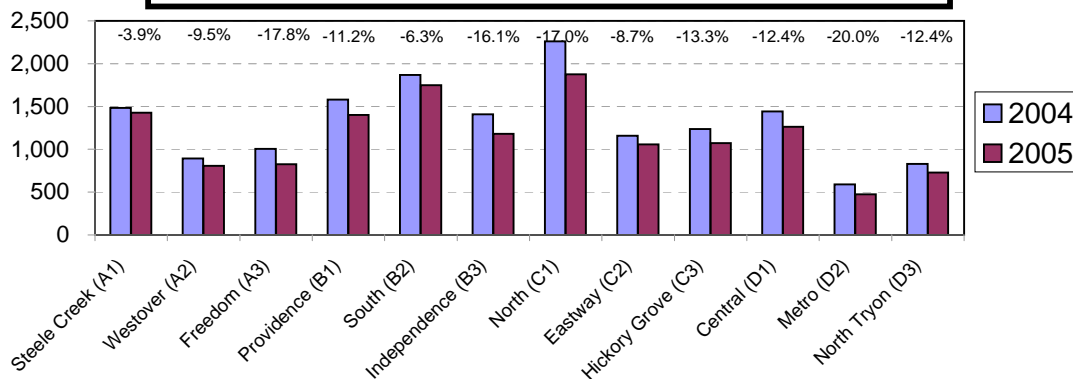
Type	2004	2005	% Change
Fatal Collisions	24	25	4.2%
Vehicle Occupants Killed	22	22	0.0%
Pedestrians Killed	3	4	33.3%
Personal Injury Collisions	3900	3321	-14.7%
Property Damage Collisions	11876	10547	-11.2%
Total Collisions	15800	13893	-12.1%

* The number of fatal collisions and the number of persons killed (fatalities) in those incidents is taken from the HITS file. Their records are updated for deaths that occur after the initial report is filed.

**Traffic Collisions Reported by Type
Charlotte-Mecklenburg Police Department:
2005 Year-to-Date
(Through July)**



**Traffic Collisions Reported by Charlotte-Mecklenburg Police Dept.
Year-to-Date By Location (Division) : 2004 -2005
(Through July)**



Uniform Crime Reporting Procedures:

The Charlotte-Mecklenburg Police Department reports offense and arrest statistics in accordance with standard Uniform Crime Reporting (UCR) guidelines. UCR policy states that any adjustments to previous months can be made on the current month's report:

...In tabulating crime counts, an agency may find that offense totals for past months require adjustments due to developments in the investigation or other handling of the matter. It may be necessary to adjust totals reported to UCR for the past month or prior months. Needed adjustments can be made on the current month's report and do not affect the reliability of the figures in that such adjustments tend to equalize each other from month to month over a period of time.

- *Uniform Crime Reporting Handbook*, FBI, 1984, p. 42-43

We are required to report crime monthly to the UCR program, and we do therefore make an effort to process monthly changes in a timely manner. However, occasionally due to the review and processing required for reclassifying, unfounding or clearing cases, the current month's totals may reflect the processing of a backlog of these changes from previous months.

Users of the data are cautioned that conclusions about substantial changes in crime trends or in clearance rates based on only a single month's data or trend may reflect some of these adjustments. For this reason, in addition to the monthly and year-to-date trends on Page 1, the monthly report routinely includes a comparison for the previous 12 months (p. 4), as well as graphs that provide seasonal/monthly comparisons over a five-year period (p. 5-8).

This report was compiled by the Research, Planning, and Analysis Division with assistance of volunteer Doris Bowen.

We make an effort to present the most accurate information available at the time this report is published. Please notify the Research, Planning, and Analysis office if you have any questions about the data in this report or about an error that was missed in proofing the report.

The division names adopted in 2003 are used in this report; the old district designations are shown in parentheses.