



**CHARLOTTE-MECKLENBURG POLICE DEPARTMENT
MONTHLY SUMMARY REPORT
MAY, 2005**

**Darrel Stephens
Chief of Police**

INDEX OFFENSES REPORTED TO CHARLOTTE-MECKLENBURG POLICE DEPARTMENT

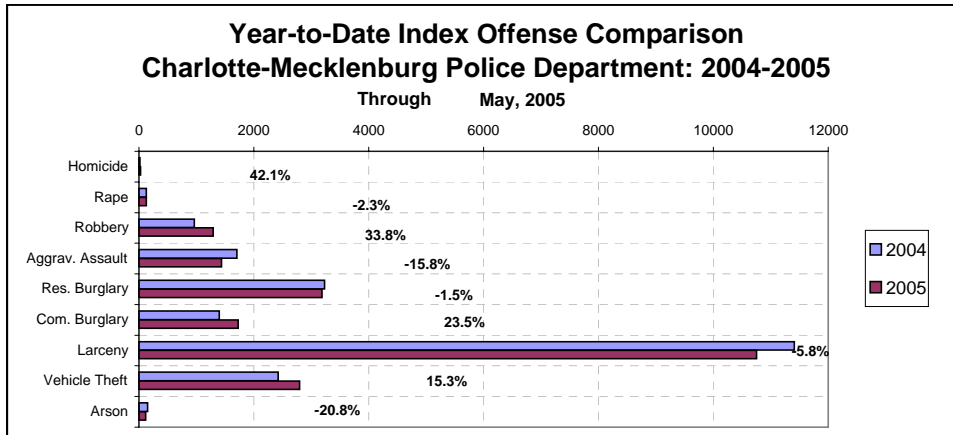
May, 2005 INDEX OFFENSES	# THIS MONTH	% OF ALL INDEX	# LAST MONTH	MONTHLY % CHANGE	SAME MONTH LAST YEAR	MONTHLY % CHANGE	THIS YEAR TO DATE	LAST YEAR TO DATE	ANNUAL % CHANGE
HOMICIDE (MURDER & NON- NEGLIGENT MANSLAUGHTER)	9	0.2%	4	125.0%	3	200.0%	27	19	42.1%
RAPE TOTAL	37	0.8%	27	37.0%	32	15.6%	127	130	-2.3%
ACTUAL	33	0.7%	26	26.9%	29	13.8%	119	123	-3.3%
ATTEMPT	4	0.1%	1	300.0%	3	33.3%	8	7	14.3%
ROBBERY TOTAL	276	5.8%	262	5.3%	210	31.4%	1291	965	33.8%
ARMED	219	4.6%	213	2.8%	154	42.2%	1035	729	42.0%
STRONG-ARM	57	1.2%	49	16.3%	56	1.8%	256	236	8.5%
AGGRAVATED ASSAULT TOTAL	306	6.5%	260	17.7%	427	-28.3%	1436	1706	-15.8%
BURGLARY TOTAL	1059	22.3%	1031	2.7%	1036	2.2%	4912	4631	6.1%
RESIDENTIAL	666	14.0%	675	-1.3%	764	-12.8%	3184	3232	-1.5%
COMMERCIAL	393	8.3%	356	10.4%	272	44.5%	1728	1399	23.5%

FORCE	876	18.5%	849	3.2%	834	5.0%	4033	3690	9.3%
NO FORCE	130	2.7%	113	15.0%	146	-11.0%	560	657	-14.8%
ATTEMPT	53	1.1%	69	-23.2%	56	-5.4%	319	284	12.3%
LARCENY TOTAL	2365	49.9%	2203	7.4%	2564	-7.8%	10754	11412	-5.8%
\$200 AND OVER	1165	24.6%	1073	8.6%	1211	-3.8%	5308	5472	-3.0%
\$50 TO \$200	448	9.4%	424	5.7%	481	-6.9%	2083	2118	-1.7%
UNDER \$50	752	15.9%	706	6.5%	872	-13.8%	3363	3822	-12.0%

FROM AUTO	1172	24.7%	1073	9.2%	1271	-7.8%	5405	5761	-6.2%
BICYCLE	21	0.4%	12	75.0%	22	-4.5%	62	84	-26.2%
SHOPLIFTING	224	4.7%	226	-0.9%	261	-14.2%	1040	1237	-15.9%
OTHERS	948	20.0%	892	6.3%	1010	-6.1%	4247	4330	-1.9%
VEHICLE THEFT TOTAL	665	14.0%	619	7.4%	509	30.6%	2797	2425	15.3%
ARSON TOTAL	25	0.5%	27	-7.4%	39	-35.9%	118	149	-20.8%
TOTALS	4742	100.0%	4433	7.0%	4820	-1.6%	21462	21437	0.1%
VIOLENT PROPERTY	628 4114	13.2% 86.8%	553 3880	13.6% 6.0%	672 4148	-6.5% -0.8%	2881 18581	2820 18617	2.2% -0.2%

NOTE: Internal robbery breakdowns by armed and strong-arm in October, 2004, reflect the late reclassification of some cases from previous months from armed robbery to strong-arm robbery.

NOTE: These totals include offenses reported to the Charlotte-Mecklenburg Police Department in accordance with the Uniform Crime Reporting Program. Totals for homicide do not include cases investigated by the police but classed by UCR guidelines as negligent manslaughter or as "justifiable homicide."



INDEX CLEARANCES REPORTED BY THE CHARLOTTE-MECKLENBURG POLICE DEPARTMENT

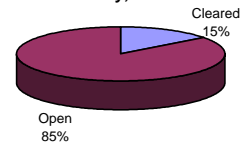
INDEX CLEARANCES	THIS MONTH:		LAST MONTH:		SAME MO. LAST YR:		THIS YEAR TO DATE:		LAST YEAR TO DATE:	
	NO.	%	NO.	%	NO.	%	NO.	%	NO.	%
MURDER & NON-NEGLIGENT MANSLAUGHTER	1	11.1%	3	75.0%	3	100.0%	11	40.7%	8	42.1%
RAPE TOTAL	20	54.1%	21	77.8%	23	71.9%	103	81.1%	91	70.0%
ACTUAL	19	57.6%	30	115.4%	21	72.4%	100	84.0%	83	67.5%
ATTEMPT	1	25.0%	1	100.0%	2	66.7%	13	162.5%	8	114.3%
ROBBERY TOTAL	61	22.1%	61	23.3%	56	26.7%	312	24.2%	302	31.3%
ARMED	45	20.5%	44	20.7%	44	28.6%	239	23.1%	223	30.6%
STRONG-ARM	16	28.1%	17	34.7%	12	21.4%	73	28.5%	79	33.5%
AGGRAVATED ASSAULT TOTAL	169	55.2%	158	60.8%	195	45.7%	747	52.0%	894	52.4%
BURGLARY TOTAL	128	12.1%	79	7.7%	112	10.8%	604	12.3%	514	11.1%
RESIDENTIAL	100	15.0%	63	9.3%	104	13.6%	484	15.2%	427	13.2%
COMMERCIAL	28	7.1%	16	4.5%	8	2.9%	120	6.9%	87	6.2%
LARCENY TOTAL	350	14.8%	322	14.6%	508	19.8%	1628	15.1%	1637	14.3%
FROM AUTO	76	6.5%	43	4.0%	48	3.8%	245	4.5%	171	3.0%
BICYCLE	2	9.5%	1	8.3%	3	13.6%	9	14.5%	7	8.3%
SHOPLIFTING	155	69.2%	152	67.3%	191	73.2%	716	68.8%	748	60.5%
OTHERS	117	12.3%	126	14.1%	266	26.3%	658	15.5%	711	16.4%
VEHICLE THEFT TOTAL	124	18.6%	82	13.2%	106	20.8%	478	17.1%	488	20.1%
ARSON TOTAL	6	24.0%	2	7.4%	5	12.8%	21	17.8%	41	27.5%
TOTALS	859	18.1%	728	16.4%	1008	20.9%	3904	18.2%	3975	18.5%
VIOLENT PROPERTY	251	40.0%	243	43.9%	277	41.2%	1173	40.7%	1295	45.9%
	608	14.8%	485	12.5%	731	17.6%	2731	14.7%	2680	14.4%

NOTE: Clearances are reported in accordance with Uniform Crime Report guidelines. Since clearances are not counted until they are entered until they are entered into the Records system, any delays in processing may result in some clearances being reported in succeeding months. The significant increase in clearances in Nov., 2003, was the result of the entry of clearances from 2002 and 2003 that were processed in the Case Management system but were not entered in the mainframe Records system until that month.

**Year-to-Date Violent Index Clearance Rate
Charlotte-Mecklenburg Police Department: 2004
May, 2005**

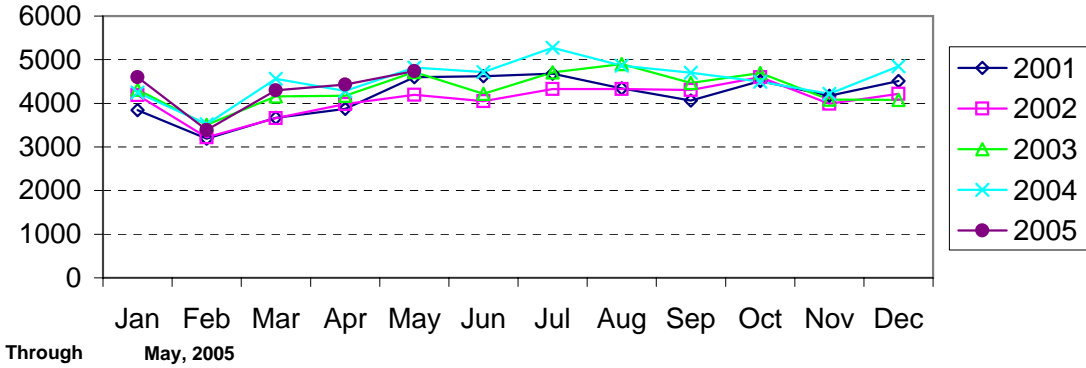


**Year-to-Date Property Index Clearance Rate
Charlotte-Mecklenburg Police Department: 2004
May, 2005**

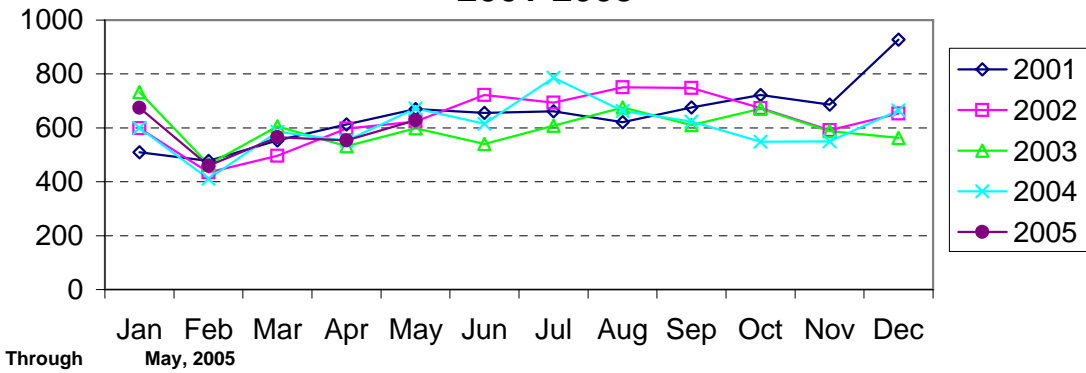


Clearance rates for crime reporting are calculated by dividing the number of crimes cleared during a designated time span by the number of crimes reported in the same period and converting the result to a percentage (multiplying by 100). Since cases from previous reporting periods can be cleared during the designated time span, the rate may be higher than 100%.

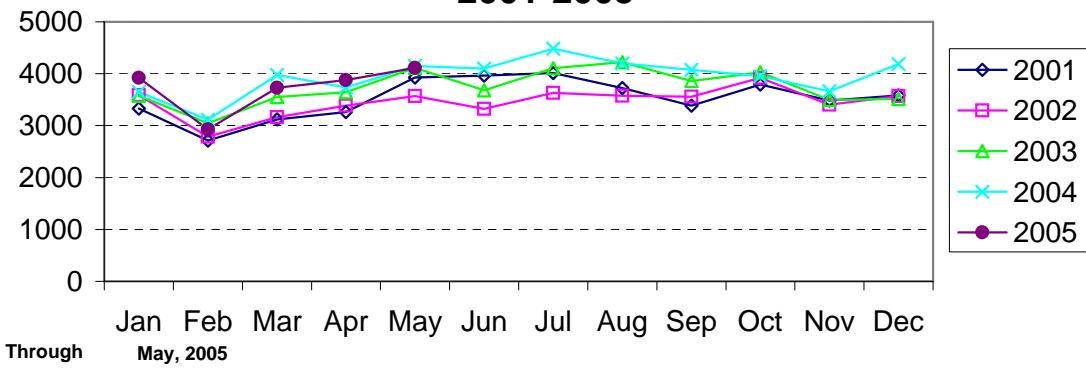
Index Offenses Reported by Month Charlotte-Mecklenburg Police Department: 2001-2005



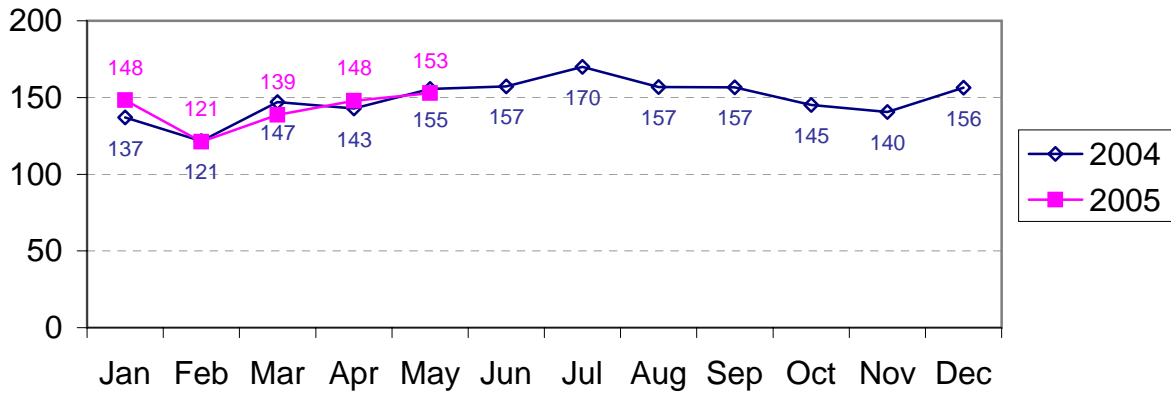
Violent Index Offenses Reported by Month Charlotte-Mecklenburg Police Department: 2001-2005



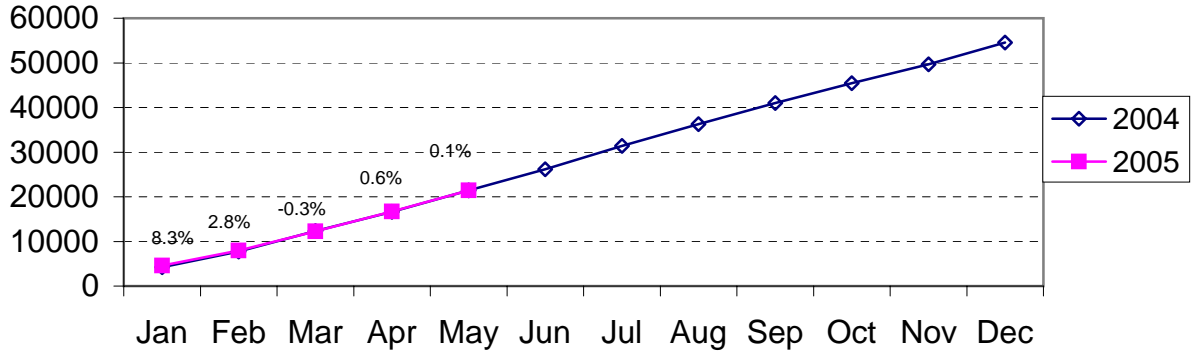
Property Index Offenses Reported by Month Charlotte-Mecklenburg Police Department: 2001-2005



Index Offense Per Day Average by Month Charlotte-Mecklenburg Police Department: 2004-2005

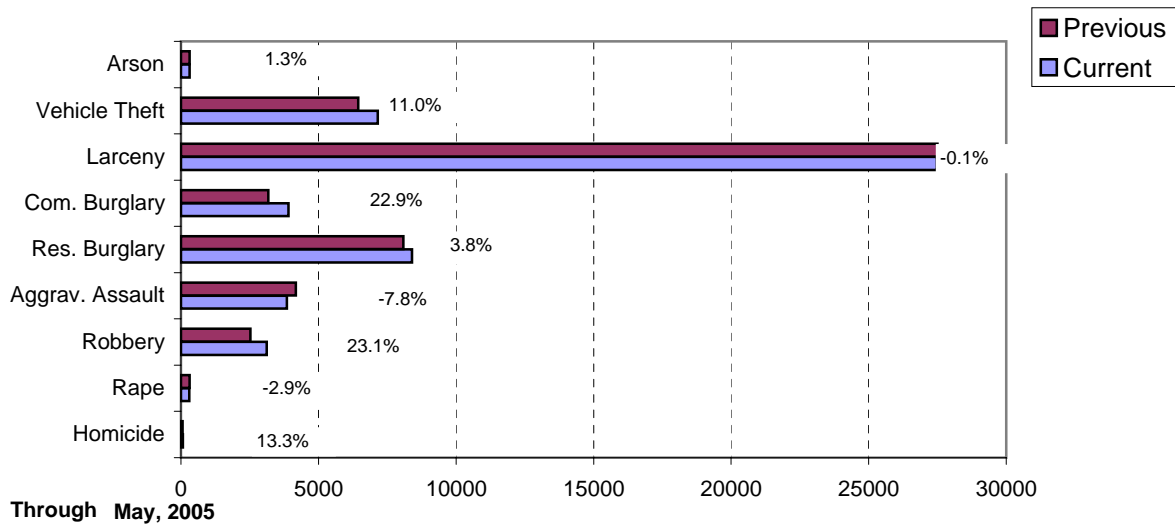


Index Offenses Year-to-Date Cumulative Totals Charlotte-Mecklenburg Police Department: 2004-2005

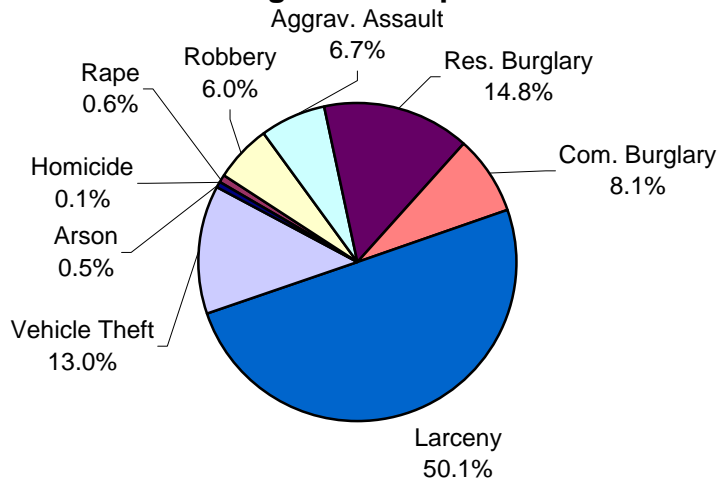


Through May, 2005

Index Offenses in Current and Previous 12 Months Charlotte-Mecklenburg Police Department

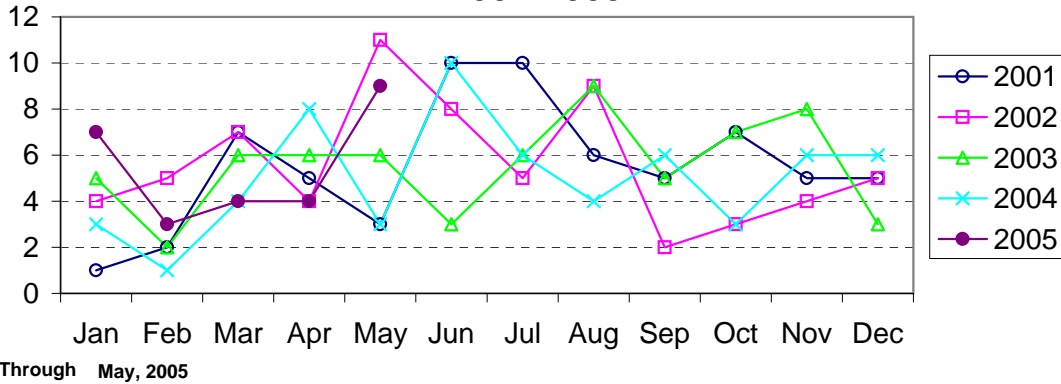


Year-to-Date Index Offenses by Type Charlotte-Mecklenburg Police Department: 2005

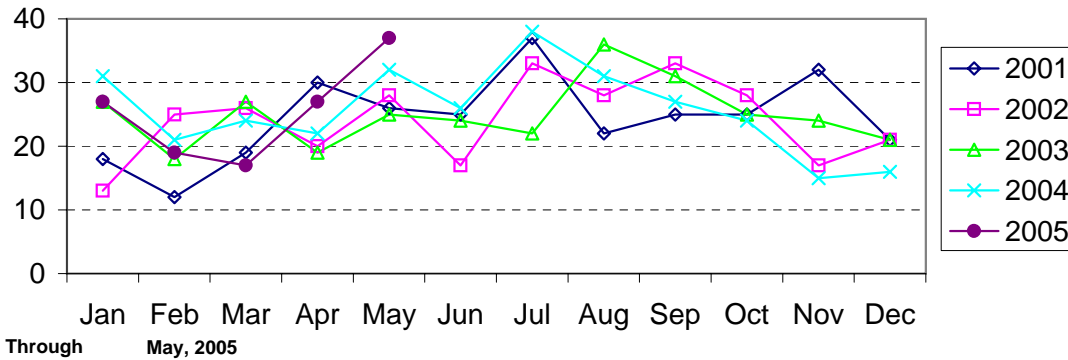


Through May, 2005

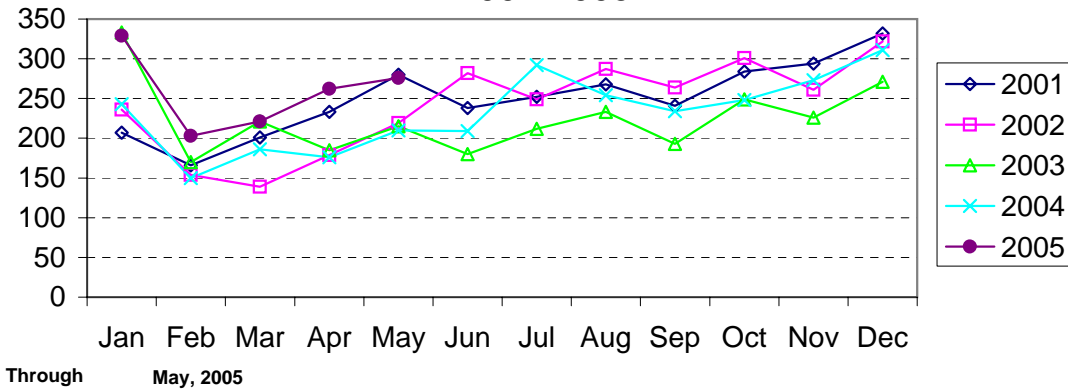
Homicide Reported by Month Charlotte-Mecklenburg Police Department: 2001-2005



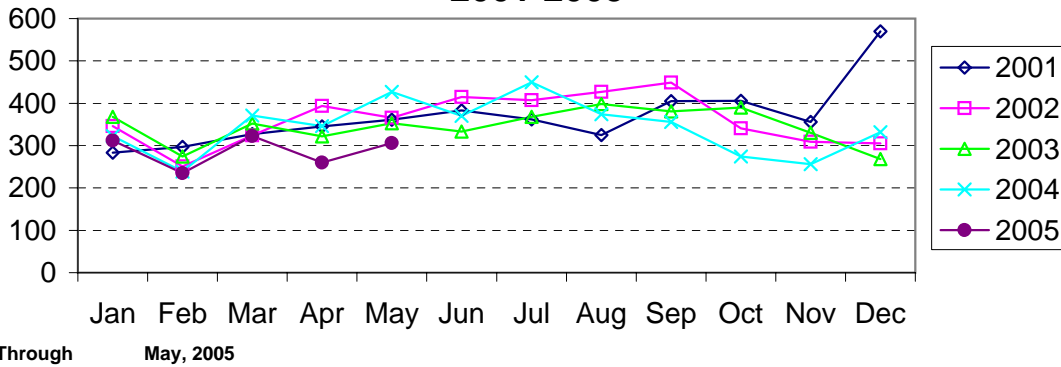
Rape Reported by Month Charlotte-Mecklenburg Police Department: 2001-2005



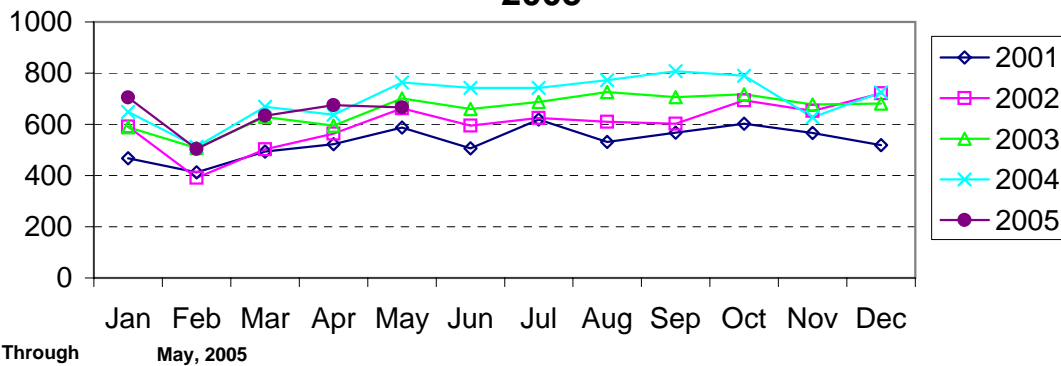
Robbery Reported by Month Charlotte-Mecklenburg Police Department: 2001-2005



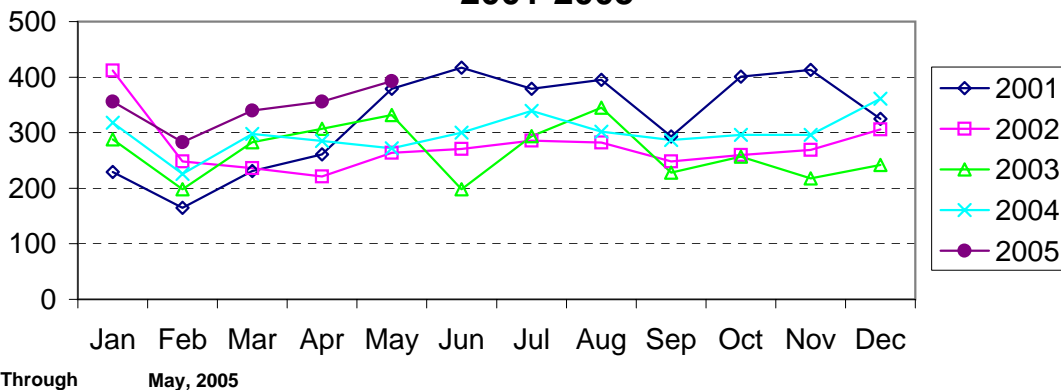
Aggravated Assault Reported by Month Charlotte-Mecklenburg Police Department: 2001-2005



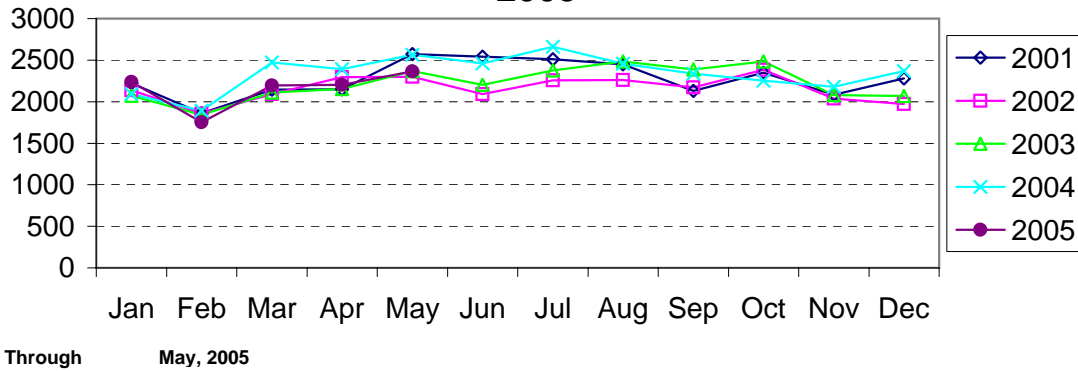
Residential Burglary Reported by Month Charlotte-Mecklenburg Police Department: 2001- 2005



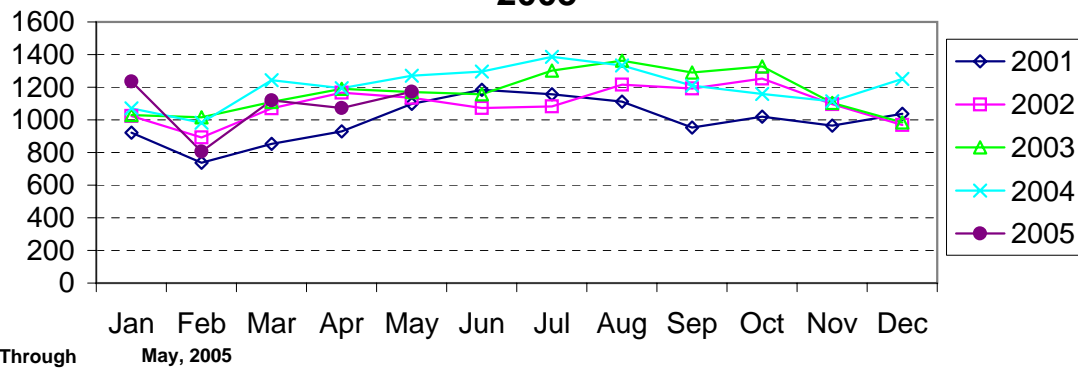
Commercial Burglary Reported by Month Charlotte-Mecklenburg Police Department: 2001-2005



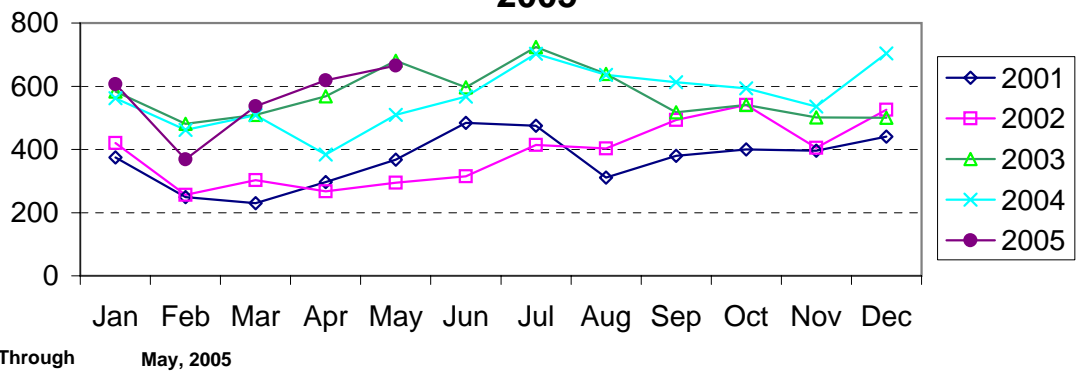
Larceny Reported by Month Charlotte-Mecklenburg Police Department: 2001-2005



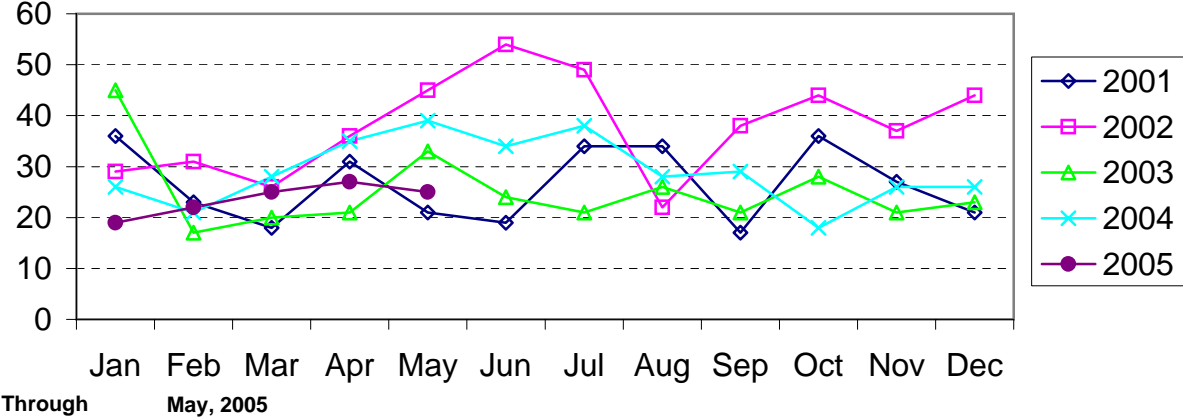
Larceny from Vehicle Reported by Month Charlotte-Mecklenburg Police Department: 2001-2005



Vehicle Theft Reported by Month Charlotte-Mecklenburg Police Department: 2001-2005



Arson Reported by Month Charlotte-Mecklenburg Police Department: 2001-2005



Index Offenses Reported by Division and Service Area of Occurrence									
West Service Area: Jan-May, 2004-2005									
INDEX_CATEGORIES	Westover (A2)			Freedom (A3)			West Service Area		
	2004	2005	% Change	2004	2005	% Change	2004	2005	% Change
MURDER & NON-NEGLIGENT MANSLAUGHTER	0	1	NA	0	3	NA	0	4	NA
RAPE	9	13	44.4%	10	14	40.0%	19	27	42.1%
ACTUAL	9	12	33.3%	10	14	40.0%	19	26	36.8%
ATTEMPTED	0	1	NA	0	0	NA	0	1	NA
ROBBERY	72	113	56.9%	122	179	46.7%	194	292	50.5%
ARMED	56	89	58.9%	93	159	71.0%	149	248	66.4%
STRONG-ARM	16	24	50.0%	29	20	-31.0%	45	44	-2.2%
AGGRAVATED ASSAULT	130	157	20.8%	188	194	3.2%	318	351	10.4%
BURGLARY	368	379	3.0%	641	696	8.6%	1009	1075	6.5%
RESIDENTIAL	243	194	-20.2%	445	431	-3.1%	688	625	-9.2%
COMMERCIAL	125	185	48.0%	196	265	35.2%	321	450	40.2%
LARCENY	732	704	-3.8%	1164	997	-14.3%	1896	1701	-10.3%
FROM AUTO	385	324	-15.8%	557	427	-23.3%	942	751	-20.3%
BICYCLE	7	0	-100.0%	5	4	-20.0%	12	4	-66.7%
SHOPLIFTING	70	58	-17.1%	128	93	-27.3%	198	151	-23.7%
OTHERS	270	322	19.3%	474	473	-0.2%	744	795	6.9%
VEHICLE THEFT	162	208	28.4%	295	273	-7.5%	457	481	5.3%
ARSON	12	9	-25.0%	15	11	-26.7%	27	20	-25.9%
TOTALS	1485	1584	6.7%	2435	2367	-2.8%	3920	3951	0.8%
VIOLENT PROPERTY	211 1274	284 1300	34.6% 2.0%	320 2115	390 1977	21.9% -6.5%	531 3389	674 3277	26.9% -3.3%

Index Offenses Reported by Division and Service Area of Occurrence									
Southeast Service Area: Jan-May, 2004-2005									
INDEX_CATEGORIES	Providence (B1)			Independence (B3)			Southeast Service Area		
	2004	2005	% Change	2004	2005	% Change	2004	2005	% Change
MURDER & NON-NEGLIGENT MANSLAUGHTER	0	2	NA	1	2	100.0%	1	4	300.0%
RAPE	7	5	-28.6%	8	15	87.5%	15	20	33.3%
ACTUAL	7	5	-28.6%	7	13	85.7%	14	18	28.6%
ATTEMPTED	0	0	NA	1	2	100.0%	1	2	100.0%
ROBBERY	52	50	-3.8%	86	112	30.2%	138	162	17.4%
ARMED	39	41	5.1%	67	92	37.3%	106	133	25.5%
STRONG-ARM	13	9	-30.8%	19	20	5.3%	32	29	-9.4%
AGGRAVATED ASSAULT	80	45	-43.8%	140	117	-16.4%	220	162	-26.4%
BURGLARY	377	341	-9.5%	414	383	-7.5%	791	724	-8.5%
RESIDENTIAL	218	210	-3.7%	316	307	-2.8%	534	517	-3.2%
COMMERCIAL	159	131	-17.6%	98	76	-22.4%	257	207	-19.5%
LARCENY	773	778	0.6%	951	937	-1.5%	1724	1715	-0.5%
FROM AUTO	358	329	-8.1%	557	516	-7.4%	915	845	-7.7%
BICYCLE	6	8	33.3%	6	3	-50.0%	12	11	-8.3%
SHOPLIFTING	74	93	25.7%	69	94	36.2%	143	187	30.8%
OTHERS	335	348	3.9%	319	324	1.6%	654	672	2.8%
VEHICLE THEFT	122	114	-6.6%	276	324	17.4%	398	438	10.1%
ARSON	7	4	-42.9%	14	16	14.3%	21	20	-4.8%
TOTALS	1418	1339	-5.6%	1890	1906	0.8%	3308	3245	-1.9%
VIOLENT PROPERTY	139 1279	102 1237	-26.6% -3.3%	235 1655	246 1660	4.7% 0.3%	374 2934	348 2897	-7.0% -1.3%

The data in the district breakdowns does not include a small number of offenses in which the location of the offense was unknown or was entered without a valid tract assignment. Districts are not equal in geographic size, demographics, zoning/development, and other factors that influence the rate of crimes committed in an area. Therefore, the comparison of raw offense totals across districts is not advisable.

Index Offenses Reported by Division and Service Area of Occurrence									
Northeast Service Area: Jan-May, 2004-2005									
INDEX_CATEGORIES	North (C1)			Hickory Grove (C3)			Northeast Service Area		
	2004	2005	% Change	2004	2005	% Change	2004	2005	% Change
MURDER & NON-NEGLIGENT MANSLAUGHTER	2	6	200.0%	1	4	300.0%	3	10	233.3%
RAPE	18	15	-16.7%	17	12	-29.4%	35	27	-22.9%
ACTUAL	17	13	-23.5%	16	10	-37.5%	33	23	-30.3%
ATTEMPTED	1	2	100.0%	1	2	100.0%	2	4	100.0%
ROBBERY	89	93	4.5%	84	105	25.0%	173	198	14.5%
ARMED	69	78	13.0%	68	81	19.1%	137	159	16.1%
STRONG-ARM	20	15	-25.0%	16	24	50.0%	36	39	8.3%
AGGRAVATED ASSAULT	140	124	-11.4%	209	152	-27.3%	349	276	-20.9%
BURGLARY	580	661	14.0%	465	665	43.0%	1045	1326	26.9%
RESIDENTIAL	416	473	13.7%	360	401	11.4%	776	874	12.6%
COMMERCIAL*	164	188	14.6%	105	264	151.4%	269	452	68.0%
LARCENY	1651	1729	4.7%	896	782	-12.7%	2547	2511	-1.4%
FROM AUTO	920	957	4.0%	438	402	-8.2%	1358	1359	0.1%
BICYCLE	9	8	-11.1%	16	8	-50.0%	25	16	-36.0%
SHOPLIFTING	141	160	13.5%	68	70	2.9%	209	230	10.0%
OTHERS	581	604	4.0%	374	302	-19.3%	955	906	-5.1%
VEHICLE THEFT	293	387	32.1%	244	341	39.8%	537	728	35.6%
ARSON	14	17	21.4%	22	15	-31.8%	36	32	-11.1%
TOTALS	2787	3032	8.8%	1938	2076	7.1%	4725	5108	8.1%
VIOLENT PROPERTY	249 2538	238 2794	-4.4% 10.1%	311 1627	273 1803	-12.2% 10.8%	560 4165	511 4597	-8.8% 10.4%

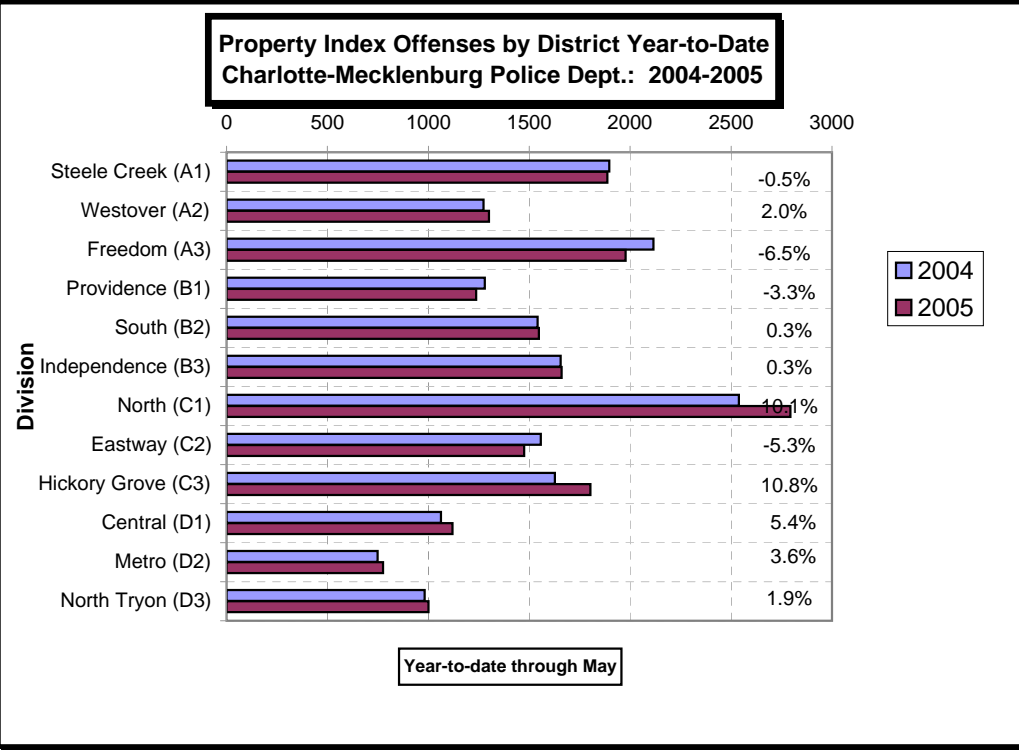
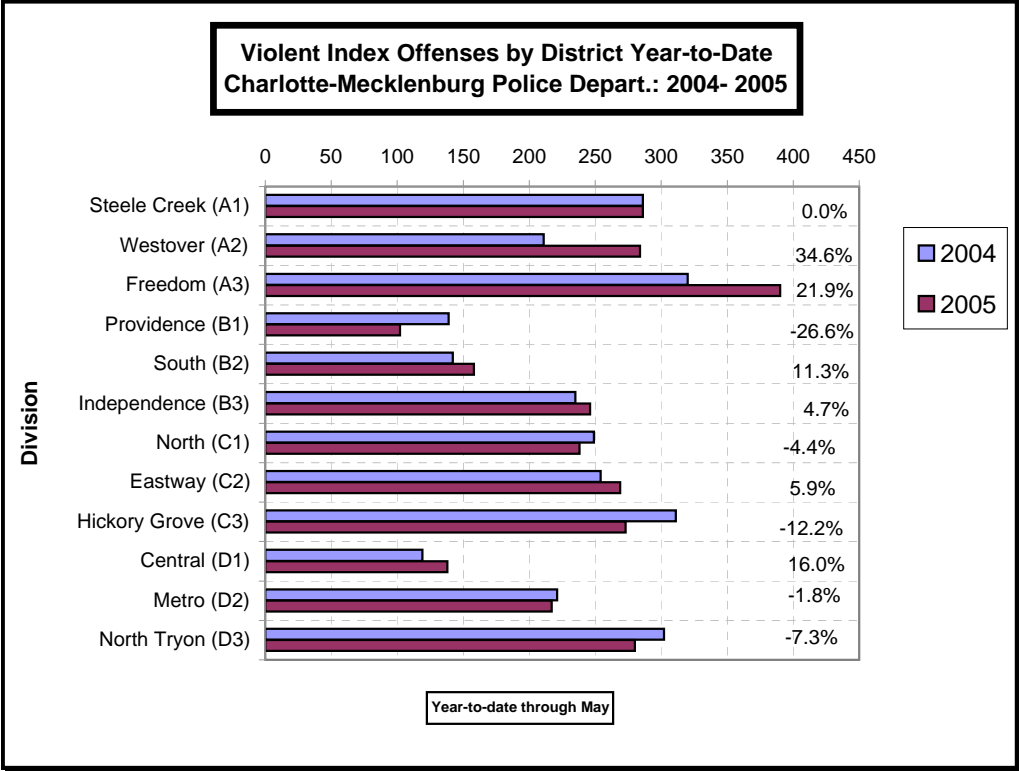
Index Offenses Reported by Division and Service Area of Occurrence									
Central Service Area: Jan-May, 2004-2005									
INDEX_CATEGORIES	Central (D1)			Metro (D2)			Central Service Area		
	2004	2005	% Change	2004	2005	% Change	2004	2005	% Change
MURDER & NON-NEGLIGENT MANSLAUGHTER	0	1	NA	3	3	0.0%	3	4	33.3%
RAPE	9	13	44.4%	12	3	-75.0%	21	16	-23.8%
ACTUAL	8	12	50.0%	11	4	-63.6%	19	16	-15.8%
ATTEMPTED	1	1	0.0%	1	-1	-200.0%	2	0	-100.0%
ROBBERY	45	69	53.3%	64	86	34.4%	109	155	42.2%
ARMED	24	39	62.5%	54	68	25.9%	78	107	37.2%
STRONG-ARM	21	30	42.9%	10	18	80.0%	31	48	54.8%
AGGRAVATED ASSAULT	65	55	-15.4%	142	125	-12.0%	207	180	-13.0%
BURGLARY	147	146	-0.7%	229	259	13.1%	376	405	7.7%
RESIDENTIAL	56	49	-12.5%	169	210	24.3%	225	259	15.1%
COMMERCIAL	91	97	6.6%	60	49	-18.3%	151	146	-3.3%
LARCENY	798	853	6.9%	387	368	-4.9%	1185	1221	3.0%
FROM AUTO	419	462	10.3%	163	162	-0.6%	582	624	7.2%
BICYCLE	7	7	0.0%	2	5	150.0%	9	12	33.3%
SHOPLIFTING	26	21	-19.2%	32	15	-53.1%	58	36	-37.9%
OTHERS	346	363	4.9%	190	186	-2.1%	536	549	2.4%
VEHICLE THEFT	116	121	4.3%	127	141	11.0%	243	262	7.8%
ARSON	2	0	-100.0%	6	8	33.3%	8	8	0.0%
TOTALS	1182	1258	6.4%	970	993	2.4%	2152	2251	4.6%
VIOLENT PROPERTY	119 1063	138 1120	16.0% 5.4%	221 749	217 776	-1.8% 3.6%	340 1812	355 1896	4.4% 4.6%

*The Commercial Burglary total in the Hickory Grove Division in 2005 includes 2 incidents at mini-storage businesses where 50 and 65 units were entered or attempted; UCR requires counting each unit as a burglary. Districts are not equal in geographic size, demographics, zoning/development, and other factors that influence the rate of crimes committed in an area. Therefore, the comparison of raw offense totals across districts is not advisable.

Index Offenses Reported by Division and Service Area of Occurrence									
East Service Area: Jan-May, 2004-2005									
INDEX_CATEGORIES	Eastway (C2)			North Tryon (D3)			East Service Area		
	2004	2005	% Change	2004	2005	% Change	2004	2005	% Change
MURDER & NON-NEGLIGENT MANSLAUGHTER	4	2	-50.0%	4	3	-25.0%	8	5	-37.5%
RAPE	7	13	85.7%	9	6	-33.3%	16	19	18.8%
ACTUAL	7	13	85.7%	8	5	-37.5%	15	18	20.0%
ATTEMPTED	0	0	NA	1	1	0.0%	1	1	0.0%
ROBBERY	107	161	50.5%	103	125	21.4%	210	286	36.2%
ARMED	76	123	61.8%	78	100	28.2%	154	223	44.8%
STRONG-ARM	31	38	22.6%	25	25	0.0%	56	63	12.5%
AGGRAVATED ASSAULT	136	93	-31.6%	186	146	-21.5%	322	239	-25.8%
BURGLARY	367	359	-2.2%	271	316	16.6%	638	675	5.8%
RESIDENTIAL	246	254	3.3%	187	207	10.7%	433	461	6.5%
COMMERCIAL	121	105	-13.2%	84	112	33.3%	205	217	5.9%
LARCENY	990	910	-8.1%	539	502	-6.9%	1529	1412	-7.7%
FROM AUTO	350	337	-3.7%	260	253	-2.7%	610	590	-3.3%
BICYCLE	13	8	-38.5%	4	3	-25.0%	17	11	-35.3%
SHOPLIFTING	326	245	-24.8%	41	27	-34.1%	367	272	-25.9%
OTHERS	301	320	6.3%	234	219	-6.4%	535	539	0.7%
VEHICLE THEFT	184	198	7.6%	167	178	6.6%	351	376	7.1%
ARSON	16	8	-50.0%	5	5	0.0%	21	13	-38.1%
TOTALS	1811	1744	-3.7%	1284	1281	-0.2%	3095	3025	-2.3%
VIOLENT	254	269	5.9%	302	280	-7.3%	556	549	-1.3%
PROPERTY	1557	1475	-5.3%	982	1001	1.9%	2539	2476	-2.5%

Index Offenses Reported by Division and Service Area of Occurrence									
South Service Area: Jan-May, 2004-2005									
INDEX_CATEGORIES	Steele Creek (A1)			South (B2)			South Service Area		
	2004	2005	% Change	2004	2005	% Change	2004	2005	% Change
MURDER & NON-NEGLIGENT MANSLAUGHTER	4	0	-100.0%	0	0	NA	4	0	-100.0%
RAPE	12	13	8.3%	9	5	-44.4%	21	18	-14.3%
ACTUAL	11	13	18.2%	9	5	-44.4%	20	18	-10.0%
ATTEMPTED	1	0	-100.0%	0	0	NA	1	0	-100.0%
ROBBERY	85	121	42.4%	50	77	54.0%	135	198	46.7%
ARMED	64	98	53.1%	37	67	81.1%	101	165	63.4%
STRONG-ARM	21	23	9.5%	13	10	-23.1%	34	33	-2.9%
AGGRAVATED ASSAULT	185	152	-17.8%	83	76	-8.4%	268	228	-14.9%
BURGLARY	376	359	-4.5%	323	347	7.4%	699	706	1.0%
RESIDENTIAL	278	206	-25.9%	262	244	-6.9%	540	450	-16.7%
COMMERCIAL	98	153	56.1%	61	103	68.9%	159	256	61.0%
LARCENY	1265	1207	-4.6%	1051	987	-6.1%	2316	2194	-5.3%
FROM AUTO	673	667	-0.9%	570	569	-0.2%	1243	1236	-0.6%
BICYCLE	6	4	-33.3%	3	4	33.3%	9	8	-11.1%
SHOPLIFTING	196	98	-50.0%	59	66	11.9%	255	164	-35.7%
OTHERS	390	438	12.3%	419	348	-16.9%	809	786	-2.8%
VEHICLE THEFT	240	310	29.2%	148	199	34.5%	388	509	31.2%
ARSON	15	11	-26.7%	20	14	-30.0%	35	25	-28.6%
TOTALS	2182	2173	-0.4%	1684	1705	1.2%	3866	3878	0.3%
VIOLENT	286	286	0.0%	142	158	11.3%	428	444	3.7%
PROPERTY	1896	1887	-0.5%	1542	1547	0.3%	3438	3434	-0.1%

The data in the district breakdowns does not include a small number of offenses in which the location of the offense was unknown or was entered without a valid tract assignment. Districts are not equal in geographic size, demographics, zoning/development, and other factors that influence the rate of crimes committed in an area. Therefore, the comparison of raw offense totals across districts is not advisable.



The data in the district breakdowns does not include a small number of offenses in which the location of the offense was unknown or was entered without a valid tract assignment in 2004. Districts are not equal in geographic size, demographics, zoning/development, and other factors that influence the rate of crimes committed in an area. Therefore, the comparison of raw offense totals across districts is not advisable.

Arrests by Charlotte-Mecklenburg Police Department
Year-To-Date: 2004-2005
(Through May)

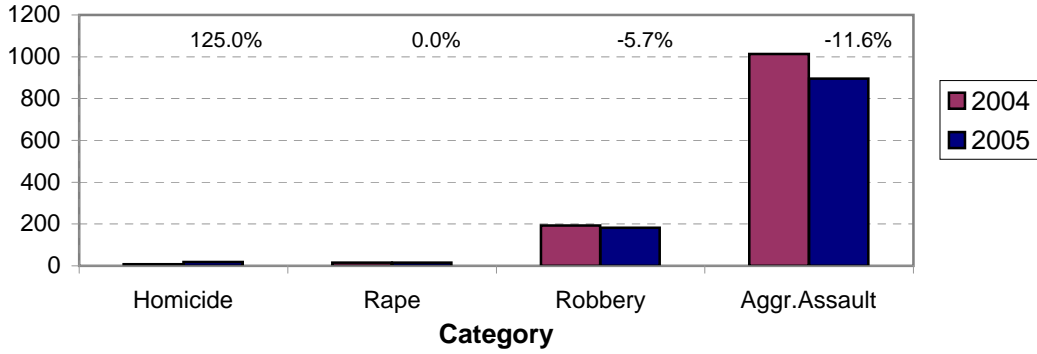
CATEGORY	ADULTS (AGE 18 & OLDER):			JUVENILES (UNDER 18):			TOTAL ARRESTS:		
	2004 Y-T-D	2005 Y-T-D	% CHANGE	2004 Y-T-D	2005 Y-T-D	% CHANGE	2004 Y-T-D	2005 Y-T-D	% CHANGE
Murder/Non-Negligent Manslaughter	8	17	112.5%	0	1	NA	8	18	125.0%
Negligent & Vehicular Manslaughter	3	3	0.0%	0	0	NA	3	3	0.0%
Rape	13	15	15.4%	2	0	-100.0%	15	15	0.0%
Robbery	124	136	9.7%	69	46	-33.3%	193	182	-5.7%
Aggravated Assault	853	770	-9.7%	160	125	-21.9%	1013	895	-11.6%
Burglary	219	243	11.0%	94	98	4.3%	313	341	8.9%
Larceny	654	638	-2.4%	271	210	-22.5%	925	848	-8.3%
Vehicle Theft	34	48	41.2%	78	37	-52.6%	112	85	-24.1%
Non-Aggravated Assault	775	801	3.4%	411	358	-12.9%	1186	1159	-2.3%
Arson	7	1	-85.7%	17	16	-5.9%	24	17	-29.2%
Forgery/Counterfiet	56	63	12.5%	2	2	0.0%	58	65	12.1%
Fraud	225	224	-0.4%	3	1	-66.7%	228	225	-1.3%
Embezzlement	37	27	-27.0%	5	1	-80.0%	42	28	-33.3%
Stolen Property	199	200	0.5%	42	55	31.0%	241	255	5.8%
Vandalism	94	82	-12.8%	100	89	-11.0%	194	171	-11.9%
Weapons	190	239	25.8%	30	35	16.7%	220	274	24.5%
Prostitution	125	66	-47.2%	7	1	-85.7%	132	67	-49.2%
Sex Offenses	83	73	-12.0%	5	12	140.0%	88	85	-3.4%
Drugs	1161	1096	-5.6%	111	116	4.5%	1272	1212	-4.7%
Gambling	11	2	-81.8%	0	0	NA	11	2	-81.8%
Offenses vs. Family	1	4	300.0%	1	0	-100.0%	2	4	100.0%
DUI	797	861	8.0%	5	5	0.0%	802	866	8.0%
Liquor	92	63	-31.5%	2	5	150.0%	94	68	-27.7%
Disorder.Conduct	215	217	0.9%	167	169	1.2%	382	386	1.0%
Other Non-Traffic	3355	3276	-2.4%	382	345	-9.7%	3737	3621	-3.1%
VIOLENT INDEX¹	998	938	-6.0%	231	172	-25.5%	1229	1110	-9.7%
PROPERTY INDEX²	914	930	1.8%	460	361	-21.5%	1374	1291	-6.0%
INDEX SUBTOTAL	1912	1868	-2.3%	691	533	-22.9%	2603	2401	-7.8%
PART 2 SUBTOTAL³	7419	7297	-1.6%	1273	1194	-6.2%	8692	8491	-2.3%
TOTAL	9331	9165	-1.8%	1964	1727	-12.1%	11295	10892	-3.6%

¹Violent Index includes murder and non-negligent manslaughter, rape, robbery, and aggravated assault.

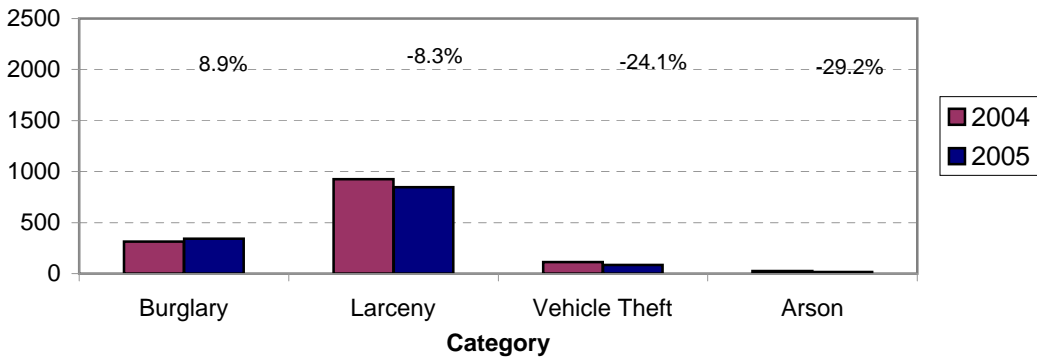
²Property Index includes burglary, larceny, vehicle theft, and arson.

³Part 2 crimes include crime categories not counted in the Index totals.

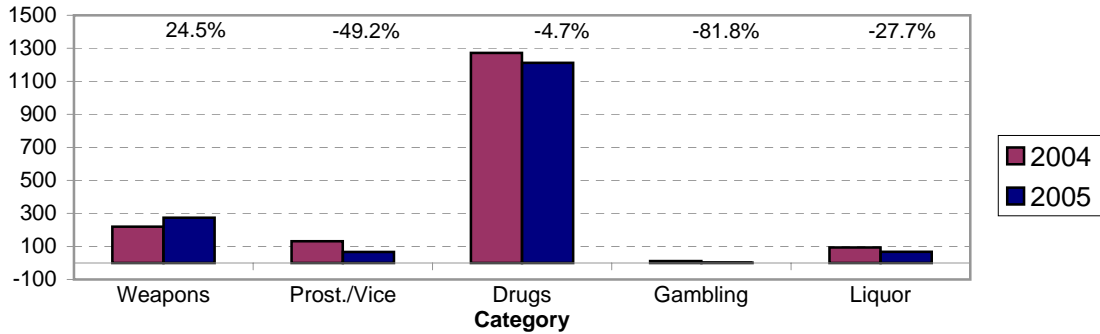
**Violent Index Arrests Year-to-Date
Charlotte-Mecklenburg Police Department: 2004-2005
(Through May)**



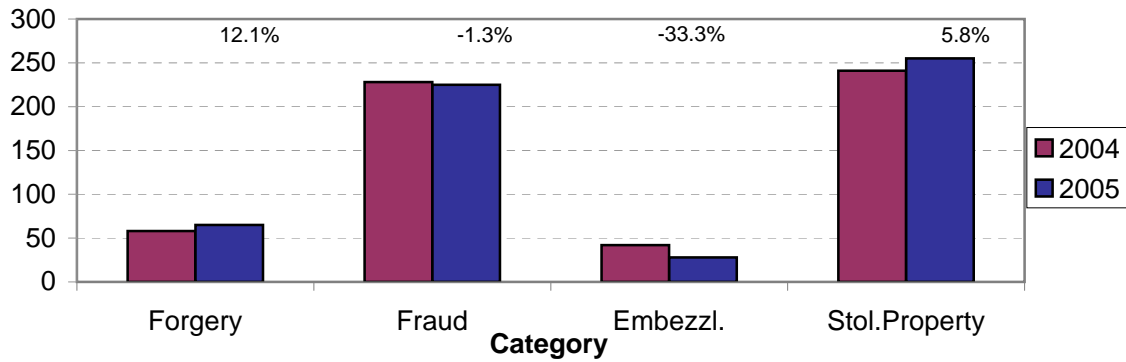
**Property Index Arrests Year-to-Date
Charlotte-Mecklenburg Police Department: 2004-2005
(Through May)**



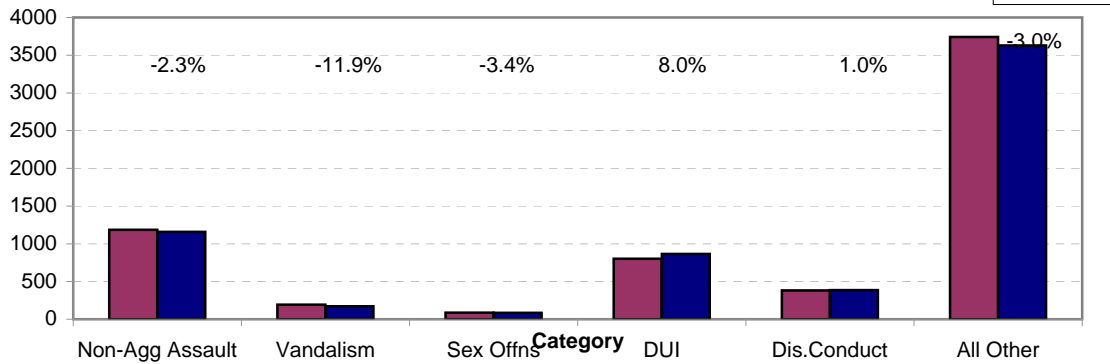
**Arrests for Vice/CCW/Drugs/Etc. Year-to-Date
Charlotte-Mecklenburg Police Department: 2004 - 2005
(Through May)**



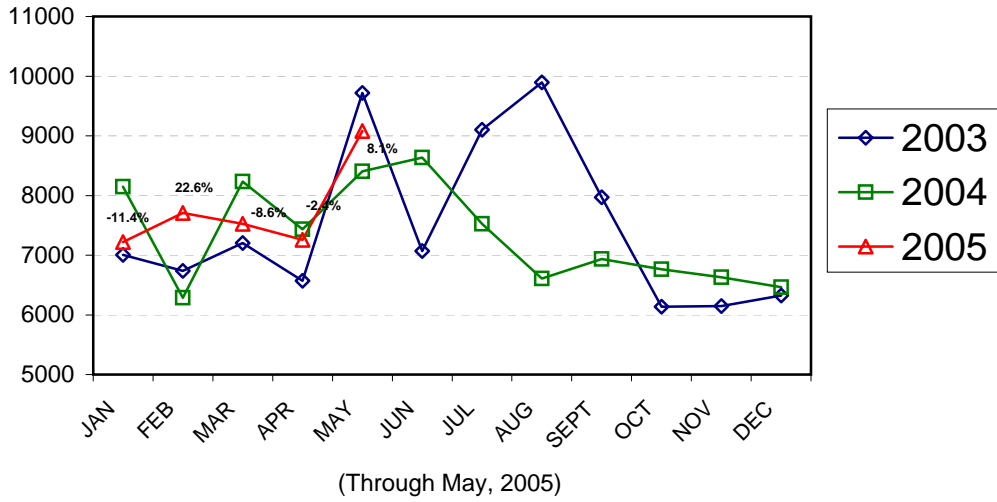
**Arrests for Property/White Collar Crime Year-to-Date
Charlotte-Mecklenburg Police Department: 2004- 2005
(Through May)**



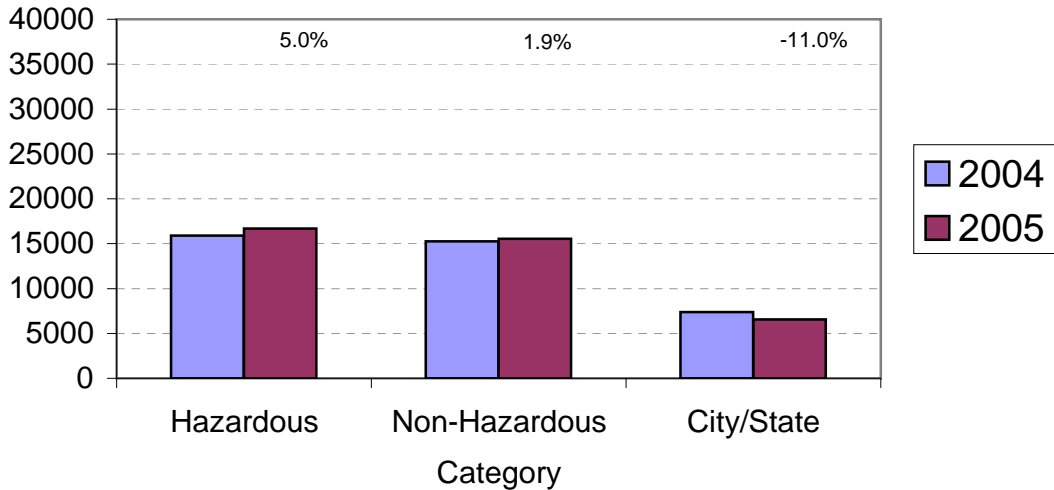
**Arrests for Other Categories Year-to-Date
Charlotte-Mecklenburg Police Department: 2004 - 2005
(Through May)**



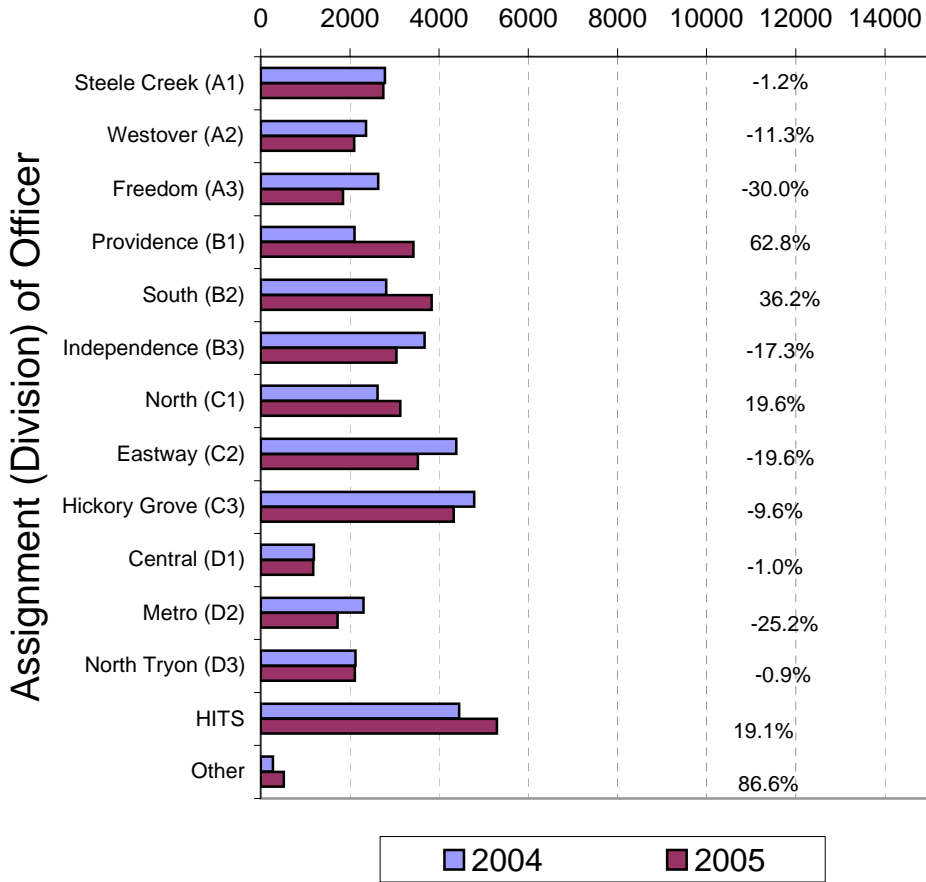
**Total Citation Enforcement by Month
Charlotte-Mecklenburg Police Dept.: 2003-2005**



**CMPD Citation Enforcement by Category
Year-to-Date, 2004 - 2005
(Through May, 2005)**



**Citations Issued Year-to-Date by CMPD Divisions
2004 - 2005
(Through May, 2005)**

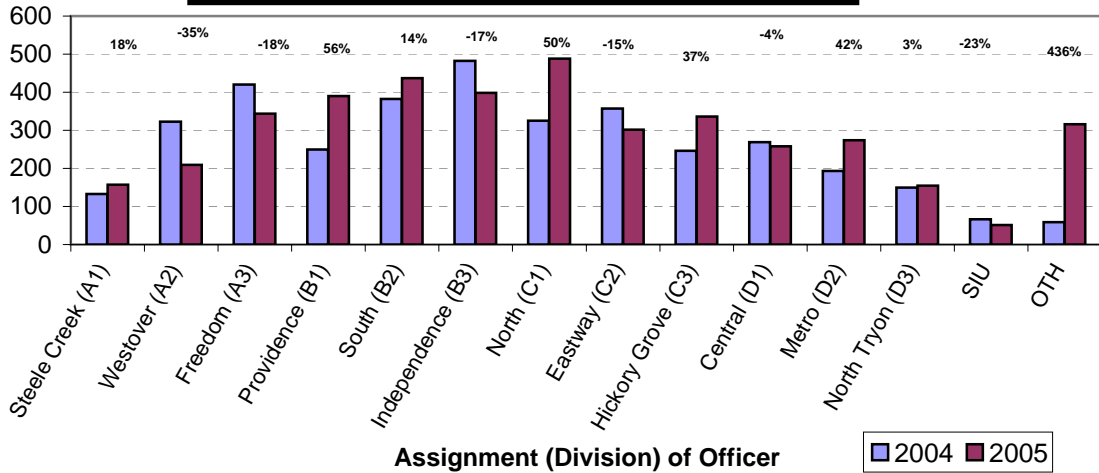


Note: 2003 and 2004 data for HITS and Other was adjusted in April, 2004.

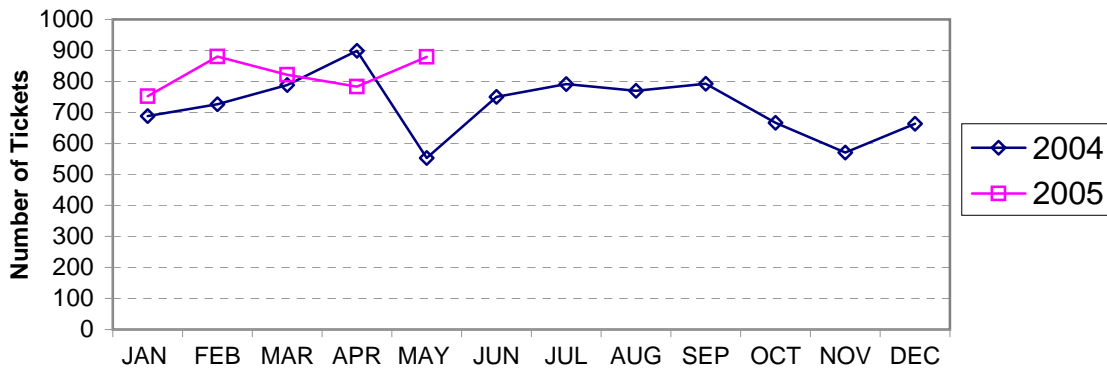
Citations Issued by the Charlotte Mecklenburg Police Officers Year-to-Date (Through May, 2005)			
Total Citations	2004	2005	% Change
Hazardous	15,893	16,695	5.0%
Non-Hazardous	15,246	15,540	1.9%
Other City/State Statute/Ordinance	7,362	6,552	-11.0%
Total	38,501	38,787	0.7%

"Safe Speed" Program: 2005 (Through May, 2005)	
Total Citations	15123
(Citations issued through the "Safe Speed" program are not included in the CMPD citation totals used in the summary chart above or in the other citation charts.)	

**Warning Tickets Issued by CMPD Division
Year-to-Date, 2004 - 2005
Through May, 2005**



**Total Warning Tickets Issued by CMPD
By Month: 2004 - 2005**



**Warning Tickets Issued by CMPD Year-to-Date
Through May, 2005**

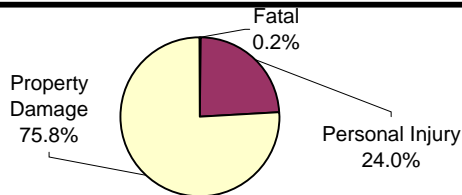
	2004	2005	% Change
Total Warning Tickets	3655	4115	12.6%

**Traffic Collision Reports
Charlotte-Mecklenburg Police Department
Year-to-Date: 2004-2005
(Through May)**

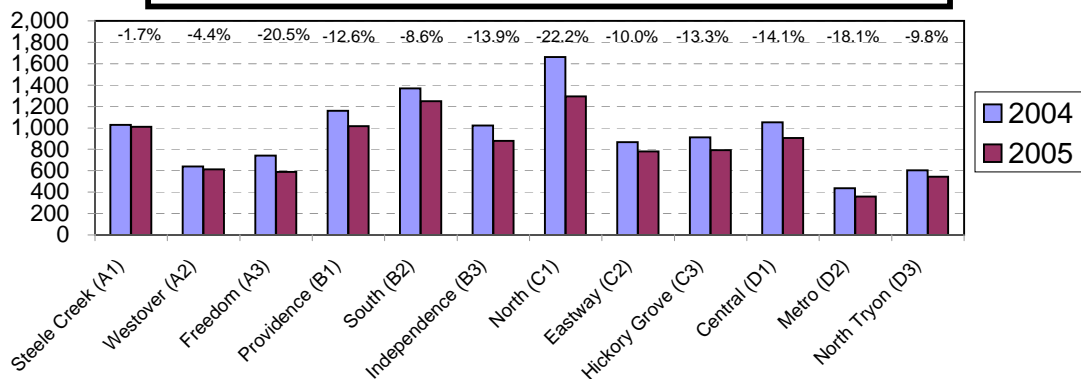
Type	2004	2005	% Change
Fatal Collisions	15	18	20.0%
Vehicle Occupants Killed	13	16	23.1%
Pedestrians Killed	3	3	0.0%
Personal Injury Collisions	2848	2398	-15.6%
Property Damage Collisions	8672	7639	-11.9%
Total Collisions	11535	10055	-12.8%

* The number of fatal collisions and the number of persons killed (fatalities) in those incidents is taken from the HITS file. Their records are updated for deaths that occur after the initial report is filed.

**Traffic Collisions Reported by Type
Charlotte-Mecklenburg Police Department:
2005 Year-to-Date
(Through May)**



**Traffic Collisions Reported by Charlotte-Mecklenburg Police Dept.
Year-to-Date By Location (Division) : 2004 -2005
(Through May)**



Uniform Crime Reporting Procedures:

The Charlotte-Mecklenburg Police Department reports offense and arrest statistics in accordance with standard Uniform Crime Reporting (UCR) guidelines. UCR policy states that any adjustments to previous months can be made on the current month's report:

...In tabulating crime counts, an agency may find that offense totals for past months require adjustments due to developments in the investigation or other handling of the matter. It may be necessary to adjust totals reported to UCR for the past month or prior months. Needed adjustments can be made on the current month's report and do not affect the reliability of the figures in that such adjustments tend to equalize each other from month to month over a period of time.

- *Uniform Crime Reporting Handbook*, FBI, 1984, p. 42-43

We are required to report crime monthly to the UCR program, and we do therefore make an effort to process monthly changes in a timely manner. However, occasionally due to the review and processing required for reclassifying, unfounding or clearing cases, the current month's totals may reflect the processing of a backlog of these changes from previous months.

Users of the data are cautioned that conclusions about substantial changes in crime trends or in clearance rates based on only a single month's data or trend may reflect some of these adjustments. For this reason, in addition to the monthly and year-to-date trends on Page 1, the monthly report routinely includes a comparison for the previous 12 months (p. 4), as well as graphs that provide seasonal/monthly comparisons over a five-year period (p. 5-8).

This report was compiled by the Research, Planning, and Analysis Division with the assistance of volunteer Doris Bowen.

We make an effort to present the most accurate information available at the time this report is published. Please notify the Research, Planning, and Analysis office if you have any questions about the data in this report or about an error that was missed in proofing the report.

The division names adopted in 2003 are used in this report; the old district designations is shown in parentheses.