



---

**CHARLOTTE-MECKLENBURG POLICE DEPARTMENT  
MONTHLY SUMMARY REPORT  
APRIL, 2005**

---

---

**Darrel Stephens  
Chief of Police**

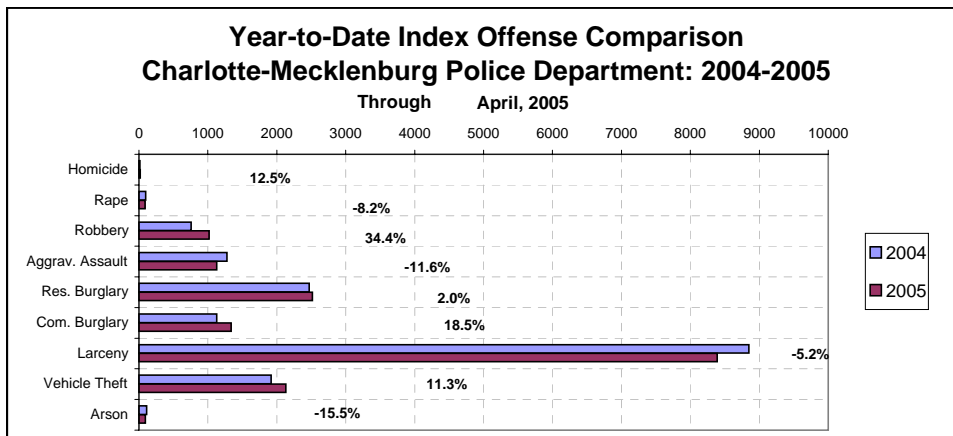
---

**INDEX OFFENSES REPORTED TO CHARLOTTE-MECKLENBURG POLICE DEPARTMENT**

| April, 2005<br>INDEX OFFENSES                  | # THIS<br>MONTH | % OF ALL<br>INDEX | # LAST<br>MONTH | MONTHLY<br>% CHANGE | SAME MONTH<br>LAST YEAR | MONTHLY<br>% CHANGE | THIS YEAR<br>TO DATE | LAST YEAR<br>TO DATE | ANNUAL<br>% CHANGE |
|--|-----------------|-------------------|-----------------|---------------------|-------------------------|---------------------|----------------------|----------------------|--------------------|
| HOMICIDE (MURDER & NON-NEGLIGENT MANSLAUGHTER) | 4               | 0.1%              | 4               | 0.0%                | 8                       | -50.0%              | 18                   | 16                   | 12.5%              |
| RAPE TOTAL                                     | 27              | 0.6%              | 17              | 58.8%               | 22                      | 22.7%               | 90                   | 98                   | -8.2%              |
| ACTUAL   | 26              | 0.6%              | 15              | 73.3%               | 22                      | 18.2%               | 86                   | 94                   | -8.5%              |
| ATTEMPT  | 1               | 0.0%              | 2               | -50.0%              | 0                       | NA                  | 4                    | 4                    | 0.0%               |
| ROBBERY TOTAL                                  | 262             | 5.9%              | 221             | 18.6%               | 176                     | 48.9%               | 1015                 | 755                  | 34.4%              |
| ARMED  | 213             | 4.8%              | 178             | 19.7%               | 145                     | 46.9%               | 816                  | 575                  | 41.9%              |
| STRONG-ARM                                     | 49              | 1.1%              | 43              | 14.0%               | 31                      | 58.1%               | 199                  | 180                  | 10.6%              |
| AGGRAVATED ASSAULT TOTAL                       | 260             | 5.9%              | 323             | -19.5%              | 346                     | -24.9%              | 1130                 | 1279                 | -11.6%             |
| BURGLARY TOTAL                                 | 1031            | 23.3%             | 974             | 5.9%                | 923                     | 11.7%               | 3853                 | 3595                 | 7.2%               |
| RESIDENTIAL                                    | 675             | 15.2%             | 634             | 6.5%                | 638                     | 5.8%                | 2518                 | 2468                 | 2.0%               |
| COMMERCIAL                                     | 356             | 8.0%              | 340             | 4.7%                | 285                     | 24.9%               | 1335                 | 1127                 | 18.5%              |
| *****  |                 |                   |                 |                     |                         |                     |                      |                      |                    |
| FORCE  | 849             | 19.2%             | 792             | 7.2%                | 735                     | 15.5%               | 3157                 | 2856                 | 10.5%              |
| NO FORCE                                       | 113             | 2.5%              | 115             | -1.7%               | 135                     | -16.3%              | 430                  | 511                  | -15.9%             |
| ATTEMPT  | 69              | 1.6%              | 67              | 3.0%                | 53                      | 30.2%               | 266                  | 228                  | 16.7%              |
| LARCENY TOTAL                                  | 2203            | 49.7%             | 2197            | 0.3%                | 2393                    | -7.9%               | 8389                 | 8848                 | -5.2%              |
| \$200 AND OVER                                 | 1073            | 24.2%             | 1137            | -5.6%               | 1164                    | -7.8%               | 4143                 | 4261                 | -2.8%              |
| \$50 TO \$200                                  | 424             | 9.6%              | 404             | 5.0%                | 467                     | -9.2%               | 1635                 | 1637                 | -0.1%              |
| UNDER \$50                                     | 706             | 15.9%             | 656             | 7.6%                | 762                     | -7.3%               | 2611                 | 2950                 | -11.5%             |
| *****  |                 |                   |                 |                     |                         |                     |                      |                      |                    |
| FROM AUTO                                      | 1073            | 24.2%             | 1119            | -4.1%               | 1194                    | -10.1%              | 4233                 | 4490                 | -5.7%              |
| BICYCLE  | 12              | 0.3%              | 10              | 20.0%               | 22                      | -45.5%              | 41                   | 62                   | -33.9%             |
| SHOPLIFTING                                    | 226             | 5.1%              | 224             | 0.9%                | 257                     | -12.1%              | 816                  | 976                  | -16.4%             |
| OTHERS   | 892             | 20.1%             | 844             | 5.7%                | 920                     | -3.0%               | 3299                 | 3320                 | -0.6%              |
| VEHICLE THEFT TOTAL                            | 619             | 14.0%             | 537             | 15.3%               | 384                     | 61.2%               | 2132                 | 1916                 | 11.3%              |
| ARSON TOTAL                                    | 27              | 0.6%              | 25              | 8.0%                | 35                      | -22.9%              | 93                   | 110                  | -15.5%             |
| TOTALS   | 4433            | 100.0%            | 4298            | 3.1%                | 4287                    | 3.4%                | 16720                | 16617                | 0.6%               |
| VIOLENT  | 553             | 12.5%             | 565             | -2.1%               | 552                     | 0.2%                | 2253                 | 2148                 | 4.9%               |
| PROPERTY                                       | 3880            | 87.5%             | 3733            | 3.9%                | 3735                    | 3.9%                | 14467                | 14469                | 0.0%               |

NOTE: Internal robbery breakdowns by armed and strong-arm in October, 2004, reflect the late reclassification of some cases from previous months from armed robbery to strong-arm robbery.

NOTE: These totals include offenses reported to the Charlotte-Mecklenburg Police Department in accordance with the Uniform Crime Reporting Program. Totals for homicide do not include cases investigated by the police but classed by UCR guidelines as negligent manslaughter or as "justifiable homicide."

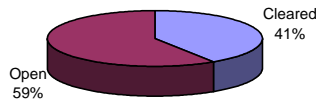


**INDEX CLEARANCES REPORTED BY THE CHARLOTTE-MECKLENBURG POLICE DEPARTMENT**

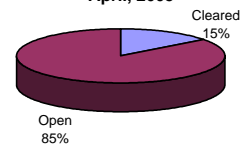
| April, 2005<br>INDEX CLEARANCES        | THIS MONTH: |        | LAST MONTH: |        | SAME MO. LAST YR: |         | THIS YEAR TO DATE: |        | LAST YEAR TO DATE: |        |
|--|-------------|--------|-------------|--------|-------------------|---------|--------------------|--------|--------------------|--------|
|  | NO.         | %      | NO.         | %      | NO.               | %       | NO.                | %      | NO.                | %      |
| MURDER & NON-NEGLIGENT<br>MANSLAUGHTER | 3           | 75.0%  | 1           | 25.0%  | 0                 | 0.0%    | 10                 | 55.6%  | 5                  | 31.3%  |
| RAPE TOTAL                             | 21          | 77.8%  | 12          | 70.6%  | 7                 | 31.8%   | 83                 | 92.2%  | 68                 | 69.4%  |
| ACTUAL                                 | 30          | 115.4% | 9           | 60.0%  | 7                 | 31.8%   | 81                 | 94.2%  | 62                 | 66.0%  |
| ATTEMPT                                | 1           | 100.0% | 3           | 150.0% | 0                 | #DIV/0! | 12                 | 300.0% | 6                  | 150.0% |
| ROBBERY TOTAL                          | 61          | 23.3%  | 80          | 36.2%  | 35                | 19.9%   | 251                | 24.7%  | 246                | 32.6%  |
| ARMED                                  | 44          | 20.7%  | 63          | 35.4%  | 28                | 19.3%   | 194                | 23.8%  | 179                | 31.1%  |
| STRONG-ARM                             | 17          | 34.7%  | 17          | 39.5%  | 7                 | 22.6%   | 57                 | 28.6%  | 67                 | 37.2%  |
| AGGRAVATED ASSAULT TOTAL               | 158         | 60.8%  | 131         | 40.6%  | 139               | 40.2%   | 578                | 51.2%  | 699                | 54.7%  |
| BURGLARY TOTAL                         | 79          | 7.7%   | 117         | 12.0%  | 126               | 13.7%   | 476                | 12.4%  | 402                | 11.2%  |
| RESIDENTIAL                            | 63          | 9.3%   | 91          | 14.4%  | 104               | 16.3%   | 384                | 15.3%  | 323                | 13.1%  |
| COMMERCIAL                             | 16          | 4.5%   | 26          | 7.6%   | 22                | 7.7%    | 92                 | 6.9%   | 79                 | 7.0%   |
| LARCENY TOTAL                          | 322         | 14.6%  | 321         | 14.6%  | 320               | 13.4%   | 1278               | 15.2%  | 1129               | 12.8%  |
| FROM AUTO                              | 43          | 4.0%   | 29          | 2.6%   | 34                | 2.8%    | 169                | 4.0%   | 123                | 2.7%   |
| BICYCLE                                | 1           | 8.3%   | 2           | 20.0%  | 1                 | 4.5%    | 7                  | 17.1%  | 4                  | 6.5%   |
| SHOPLIFTING                            | 152         | 67.3%  | 154         | 68.8%  | 170               | 66.1%   | 561                | 68.8%  | 557                | 57.1%  |
| OTHERS                                 | 126         | 14.1%  | 136         | 16.1%  | 115               | 12.5%   | 541                | 16.4%  | 445                | 13.4%  |
| VEHICLE THEFT TOTAL                    | 82          | 13.2%  | 111         | 20.7%  | 102               | 26.6%   | 354                | 16.6%  | 382                | 19.9%  |
| ARSON TOTAL                            | 2           | 7.4%   | 5           | 20.0%  | 16                | 45.7%   | 15                 | 16.1%  | 36                 | 32.7%  |
| TOTALS                                 | 728         | 16.4%  | 778         | 18.1%  | 745               | 17.4%   | 3045               | 18.2%  | 2967               | 17.9%  |
| VIOLENT<br>PROPERTY                    | 243         | 43.9%  | 224         | 39.6%  | 181               | 32.8%   | 922                | 40.9%  | 1018               | 47.4%  |
|  | 485         | 12.5%  | 554         | 14.8%  | 564               | 15.1%   | 2123               | 14.7%  | 1949               | 13.5%  |

NOTE: Clearances are reported in accordance with Uniform Crime Report guidelines. Since clearances are not counted until they are entered until they are entered into the Records system, any delays in processing may result in some clearances being reported in succeeding months. The significant increase in clearances in Nov., 2003, was the result of the entry of clearances from 2002 and 2003 that were processed in the Case Management system but were not entered in the mainframe Records system until that month.

**Year-to-Date Violent Index Clearance Rate  
Charlotte-Mecklenburg Police Department: 2004  
April, 2005**

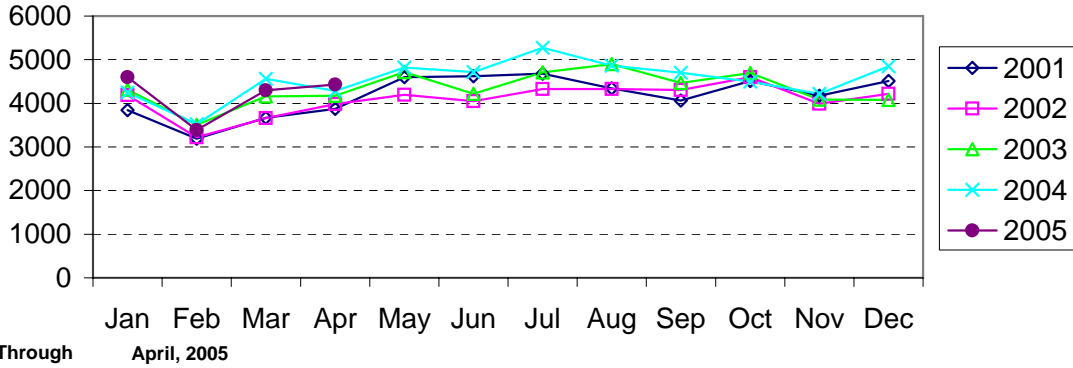


**Year-to-Date Property Index Clearance Rate  
Charlotte-Mecklenburg Police Department: 2004  
April, 2005**

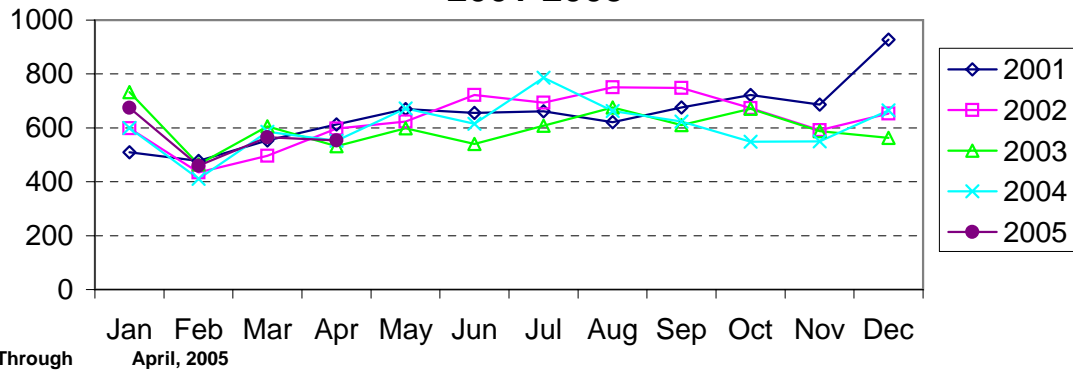


Clearance rates for crime reporting are calculated by dividing the number of crimes cleared during a designated time span by the number of crimes reported in the same period and converting the result to a percentage (multiplying by 100). Since cases from previous reporting periods can be cleared during the designated time span, the rate may be higher than 100%.

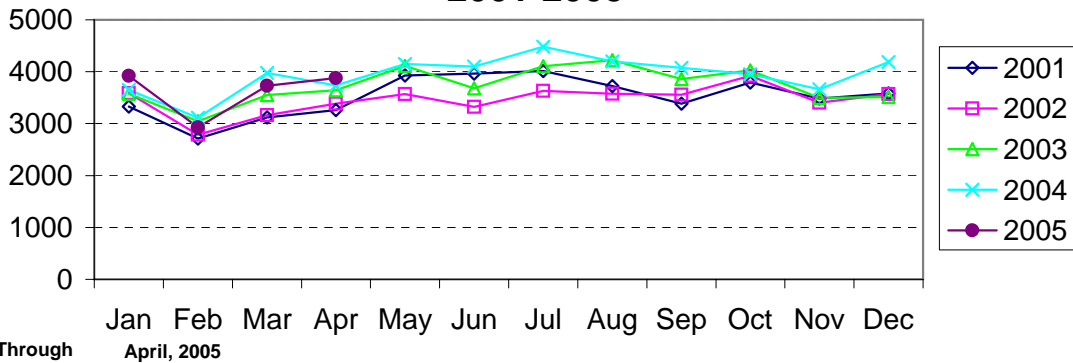
### Index Offenses Reported by Month Charlotte-Mecklenburg Police Department: 2001-2005



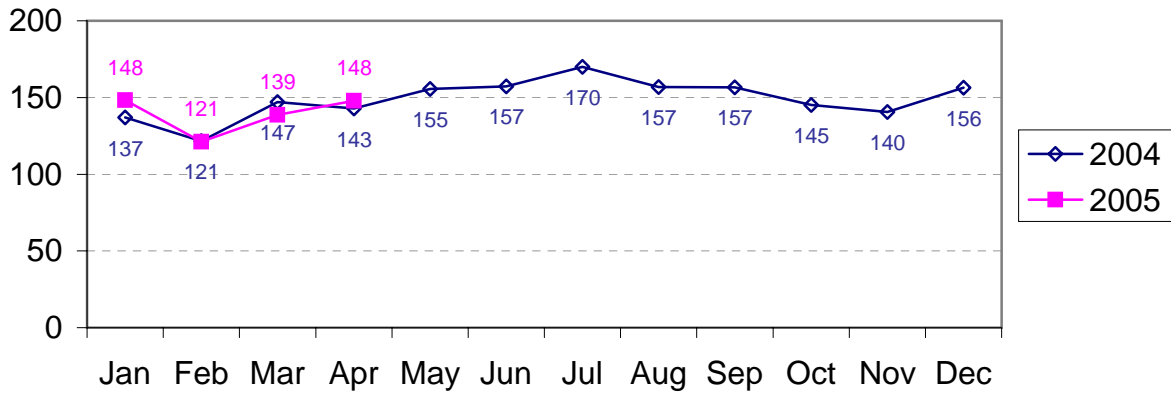
### Violent Index Offenses Reported by Month Charlotte-Mecklenburg Police Department: 2001-2005



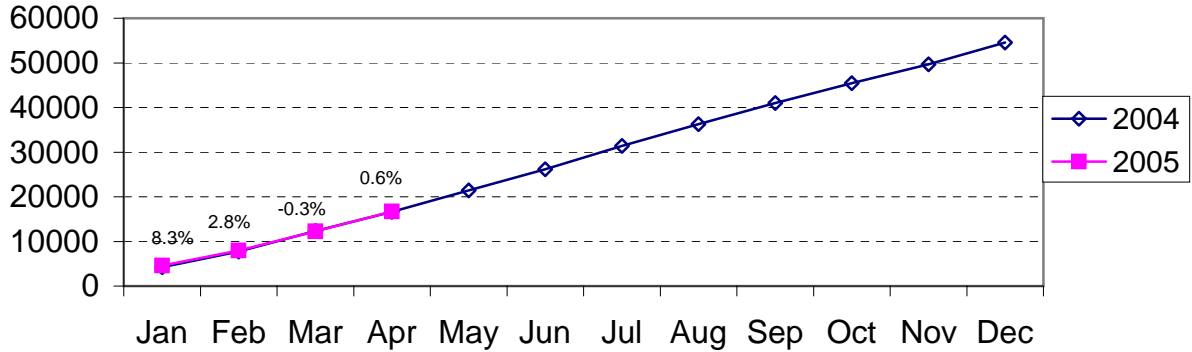
### Property Index Offenses Reported by Month Charlotte-Mecklenburg Police Department: 2001-2005



### Index Offense Per Day Average by Month Charlotte-Mecklenburg Police Department: 2004-2005

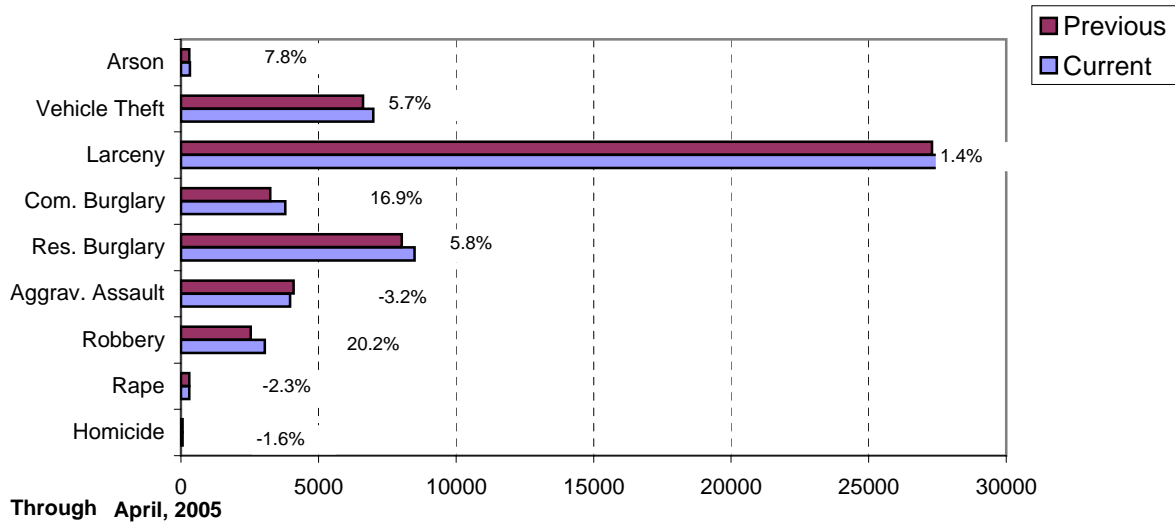


### Index Offenses Year-to-Date Cumulative Totals Charlotte-Mecklenburg Police Department: 2004-2005

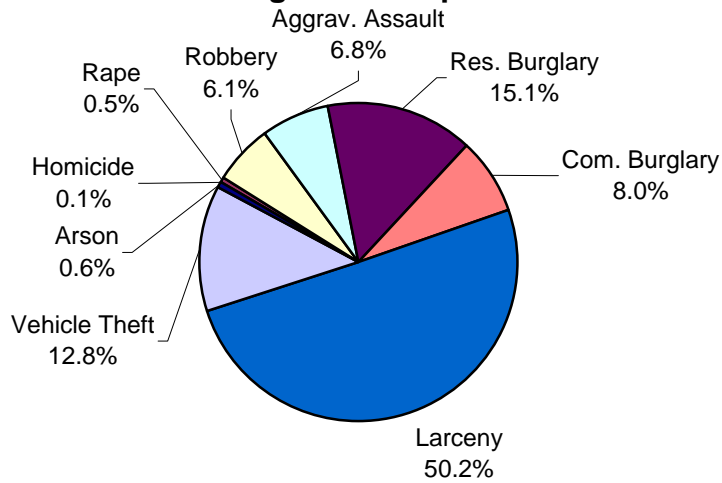


Through April, 2005

### Index Offenses in Current and Previous 12 Months Charlotte-Mecklenburg Police Department

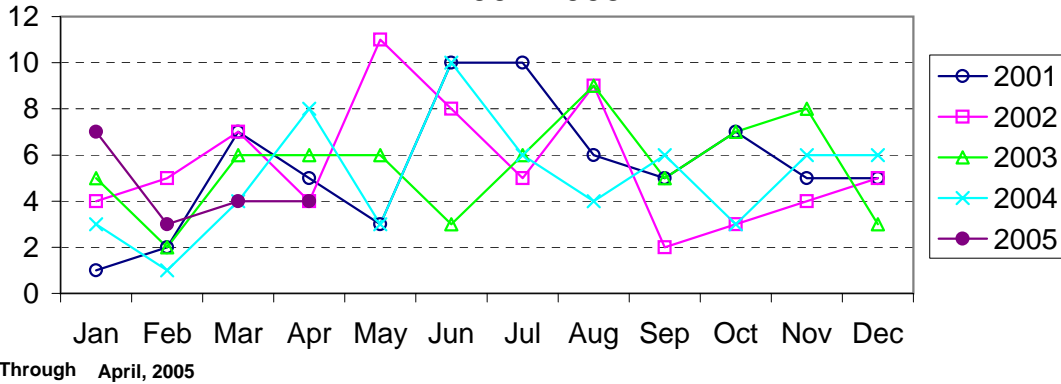


### Year-to-Date Index Offenses by Type Charlotte-Mecklenburg Police Department: 2005

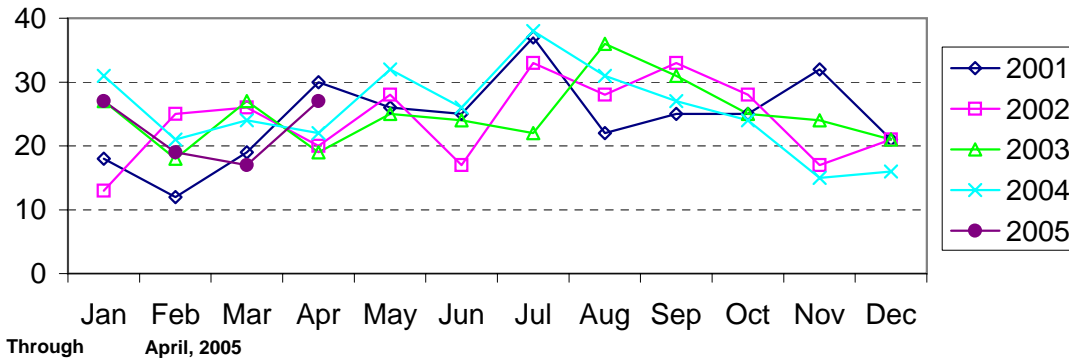


Through April, 2005

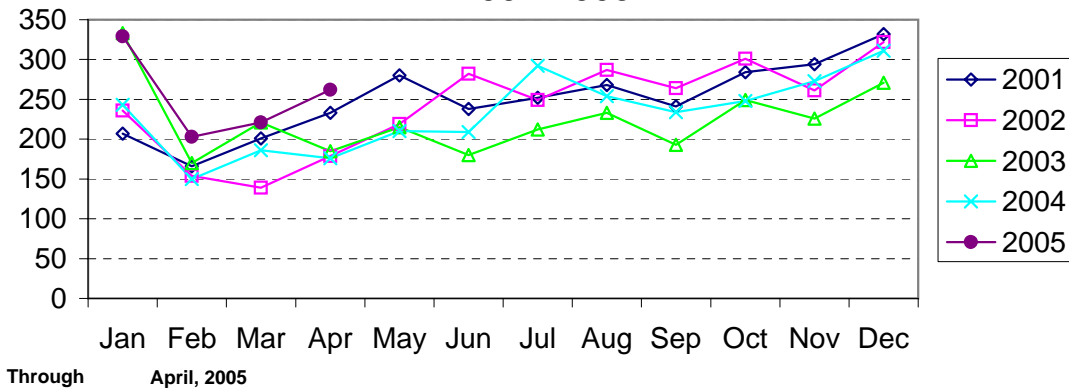
### Homicide Reported by Month Charlotte-Mecklenburg Police Department: 2001-2005



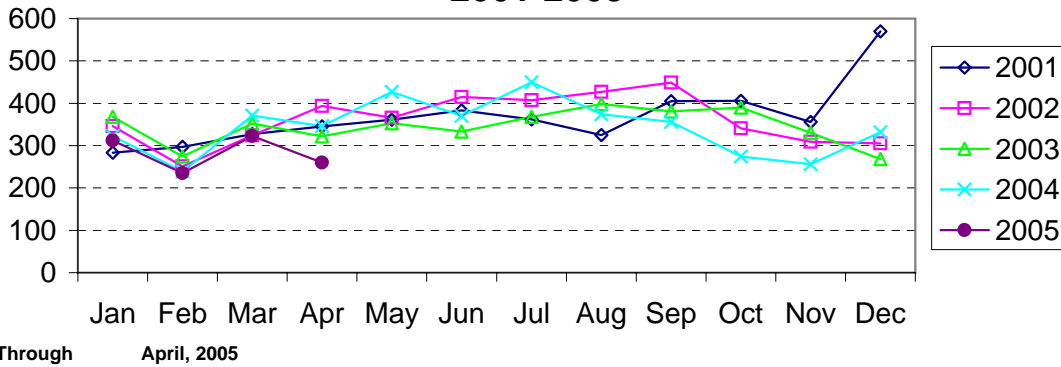
### Rape Reported by Month Charlotte-Mecklenburg Police Department: 2001-2005



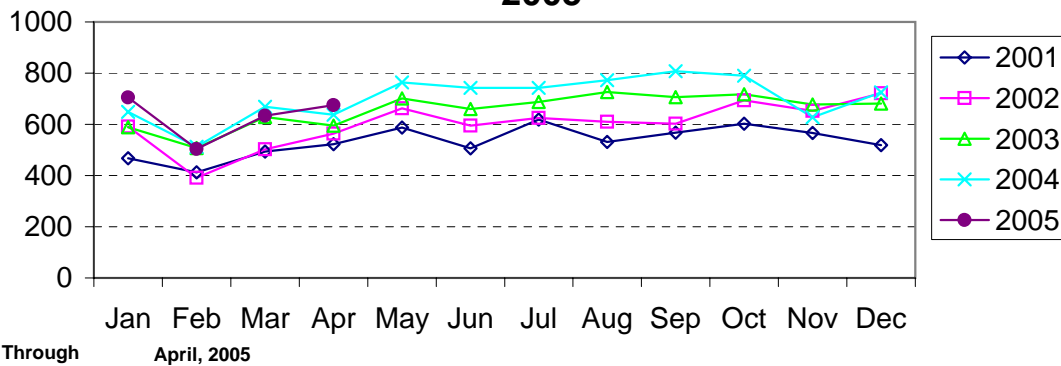
### Robbery Reported by Month Charlotte-Mecklenburg Police Department: 2001-2005



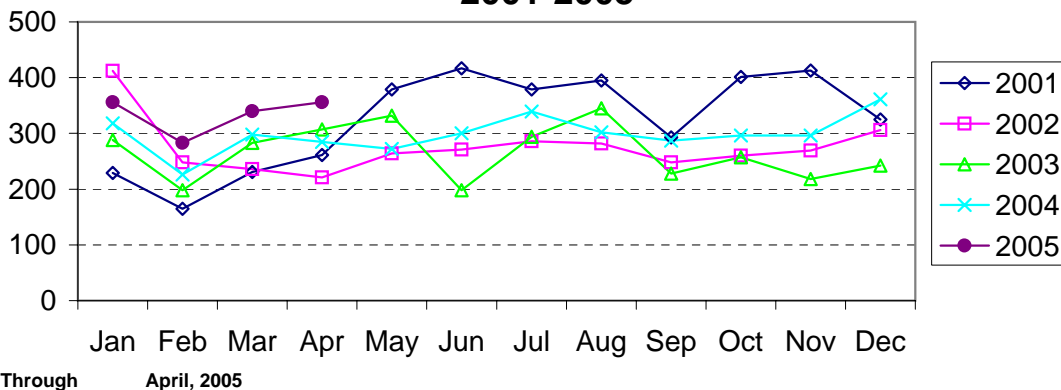
### Aggravated Assault Reported by Month Charlotte-Mecklenburg Police Department: 2001-2005



### Residential Burglary Reported by Month Charlotte-Mecklenburg Police Department: 2001- 2005

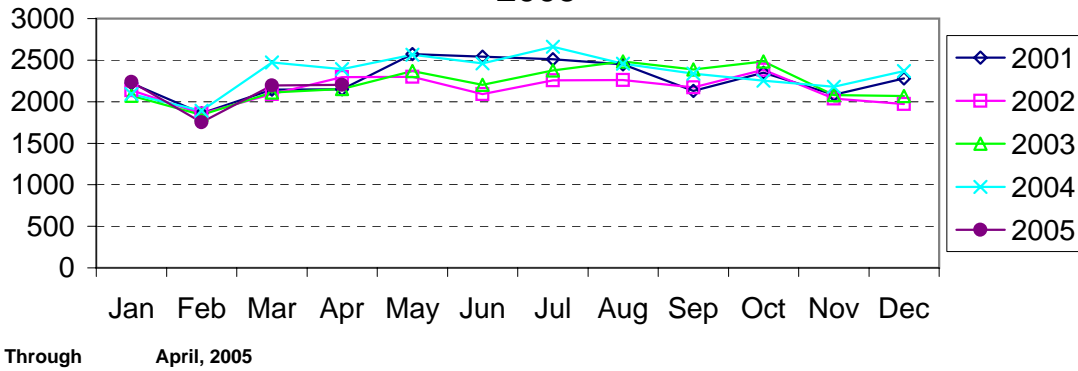


### Commercial Burglary Reported by Month Charlotte-Mecklenburg Police Department: 2001-2005

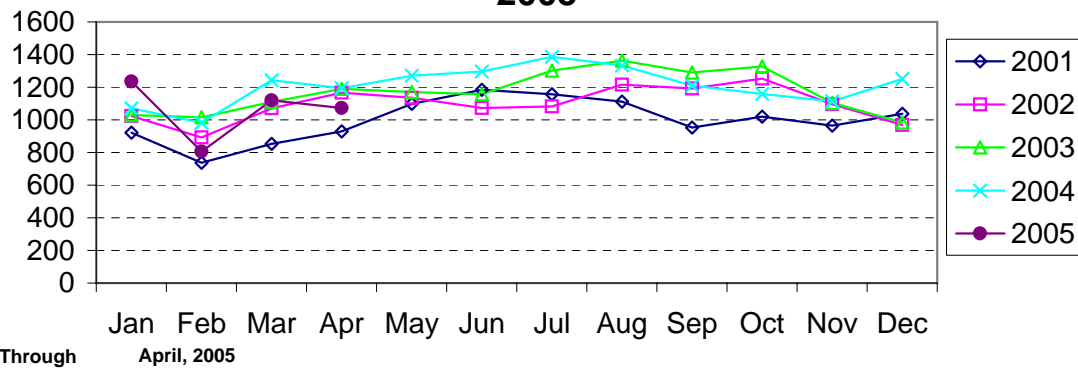




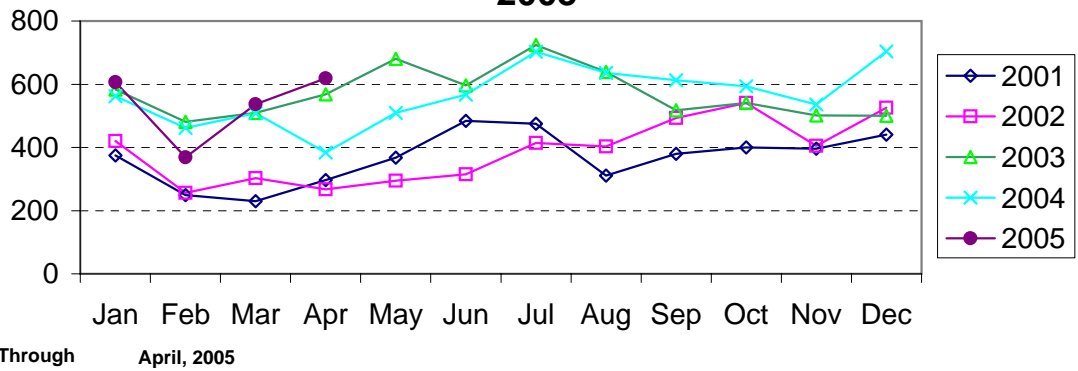
### Larceny Reported by Month Charlotte-Mecklenburg Police Department: 2001-2005



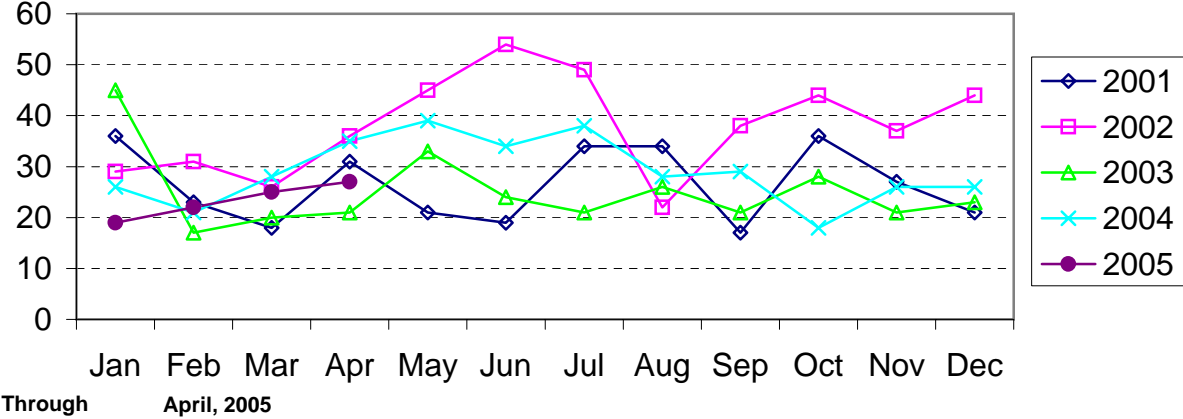
### Larceny from Vehicle Reported by Month Charlotte-Mecklenburg Police Department: 2001-2005



### Vehicle Theft Reported by Month Charlotte-Mecklenburg Police Department: 2001-2005



### Arson Reported by Month Charlotte-Mecklenburg Police Department: 2001-2005



| Index Offenses Reported by Division and Service Area of Occurrence |               |      |          |              |      |          |                   |      |          |
|--|---------------|------|----------|--------------|------|----------|-------------------|------|----------|
| West Service Area: Jan-Apr, 2004-2005                              |               |      |          |              |      |          |                   |      |          |
| INDEX_CATEGORIES   | Westover (A2) |      |          | Freedom (A3) |      |          | West Service Area |      |          |
|  | 2004          | 2005 | % Change | 2004         | 2005 | % Change | 2004              | 2005 | % Change |
| MURDER & NON-NEGLIGENT<br>MANSLAUGHTER                             | 0             | 1    | NA       | 0            | 2    | NA       | 0                 | 3    | NA       |
| RAPE   | 8             | 8    | 0.0%     | 5            | 9    | 80.0%    | 13                | 17   | 30.8%    |
| ACTUAL   | 8             | 8    | 0.0%     | 5            | 9    | 80.0%    | 13                | 17   | 30.8%    |
| ATTEMPTED  | 0             | 0    | NA       | 0            | 0    | NA       | 0                 | 0    | NA       |
| ROBBERY  | 59            | 93   | 57.6%    | 87           | 136  | 56.3%    | 146               | 229  | 56.8%    |
| ARMED  | 47            | 73   | 55.3%    | 68           | 119  | 75.0%    | 115               | 192  | 67.0%    |
| STRONG-ARM   | 12            | 20   | 66.7%    | 19           | 17   | -10.5%   | 31                | 37   | 19.4%    |
| AGGRAVATED ASSAULT   | 92            | 120  | 30.4%    | 149          | 145  | -2.7%    | 241               | 265  | 10.0%    |
| BURGLARY   | 273           | 285  | 4.4%     | 459          | 529  | 15.3%    | 732               | 814  | 11.2%    |
| RESIDENTIAL  | 172           | 142  | -17.4%   | 313          | 329  | 5.1%     | 485               | 471  | -2.9%    |
| COMMERCIAL   | 101           | 143  | 41.6%    | 146          | 200  | 37.0%    | 247               | 343  | 38.9%    |
| LARCENY  | 553           | 535  | -3.3%    | 905          | 775  | -14.4%   | 1458              | 1310 | -10.2%   |
| FROM AUTO  | 271           | 249  | -8.1%    | 439          | 343  | -21.9%   | 710               | 592  | -16.6%   |
| BICYCLE  | 5             | 0    | -100.0%  | 5            | 4    | -20.0%   | 10                | 4    | -60.0%   |
| SHOPLIFTING  | 66            | 43   | -34.8%   | 104          | 79   | -24.0%   | 170               | 122  | -28.2%   |
| OTHERS   | 211           | 243  | 15.2%    | 357          | 349  | -2.2%    | 568               | 592  | 4.2%     |
| VEHICLE THEFT  | 118           | 147  | 24.6%    | 238          | 217  | -8.8%    | 356               | 364  | 2.2%     |
| ARSON  | 10            | 6    | -40.0%   | 15           | 9    | -40.0%   | 25                | 15   | -40.0%   |
| TOTALS   | 1113          | 1195 | 7.4%     | 1858         | 1822 | -1.9%    | 2971              | 3017 | 1.5%     |
| VIOLENT  | 159           | 222  | 39.6%    | 241          | 292  | 21.2%    | 400               | 514  | 28.5%    |
| PROPERTY   | 954           | 973  | 2.0%     | 1617         | 1530 | -5.4%    | 2571              | 2503 | -2.6%    |

| Index Offenses Reported by Division and Service Area of Occurrence |                 |      |          |                   |      |          |                        |      |          |
|--|-----------------|------|----------|-------------------|------|----------|------------------------|------|----------|
| Southeast Service Area: Jan-Apr, 2004-2005                         |                 |      |          |                   |      |          |                        |      |          |
| INDEX_CATEGORIES   | Providence (B1) |      |          | Independence (B3) |      |          | Southeast Service Area |      |          |
|  | 2004            | 2005 | % Change | 2004              | 2005 | % Change | 2004                   | 2005 | % Change |
| MURDER & NON-NEGLIGENT<br>MANSLAUGHTER                             | 0               | 1    | NA       | 1                 | 0    | -100.0%  | 1                      | 1    | 0.0%     |
| RAPE   | 6               | 4    | -33.3%   | 6                 | 12   | 100.0%   | 12                     | 16   | 33.3%    |
| ACTUAL   | 6               | 4    | -33.3%   | 6                 | 11   | 83.3%    | 12                     | 15   | 25.0%    |
| ATTEMPTED  | 0               | 0    | NA       | 0                 | 1    | NA       | 0                      | 1    | NA       |
| ROBBERY  | 44              | 39   | -11.4%   | 67                | 78   | 16.4%    | 111                    | 117  | 5.4%     |
| ARMED  | 33              | 35   | 6.1%     | 52                | 63   | 21.2%    | 85                     | 98   | 15.3%    |
| STRONG-ARM   | 11              | 4    | -63.6%   | 15                | 15   | 0.0%     | 26                     | 19   | -26.9%   |
| AGGRAVATED ASSAULT   | 66              | 39   | -40.9%   | 100               | 96   | -4.0%    | 166                    | 135  | -18.7%   |
| BURGLARY   | 299             | 261  | -12.7%   | 335               | 328  | -2.1%    | 634                    | 589  | -7.1%    |
| RESIDENTIAL  | 162             | 161  | -0.6%    | 256               | 265  | 3.5%     | 418                    | 426  | 1.9%     |
| COMMERCIAL   | 137             | 100  | -27.0%   | 79                | 63   | -20.3%   | 216                    | 163  | -24.5%   |
| LARCENY  | 599             | 583  | -2.7%    | 756               | 751  | -0.7%    | 1355                   | 1334 | -1.5%    |
| FROM AUTO  | 280             | 249  | -11.1%   | 446               | 418  | -6.3%    | 726                    | 667  | -8.1%    |
| BICYCLE  | 5               | 5    | 0.0%     | 4                 | 3    | -25.0%   | 9                      | 8    | -11.1%   |
| SHOPLIFTING  | 57              | 71   | 24.6%    | 52                | 79   | 51.9%    | 109                    | 150  | 37.6%    |
| OTHERS   | 257             | 258  | 0.4%     | 254               | 251  | -1.2%    | 511                    | 509  | -0.4%    |
| VEHICLE THEFT  | 91              | 90   | -1.1%    | 222               | 247  | 11.3%    | 313                    | 337  | 7.7%     |
| ARSON  | 7               | 3    | -57.1%   | 9                 | 15   | 66.7%    | 16                     | 18   | 12.5%    |
| TOTALS   | 1112            | 1020 | -8.3%    | 1496              | 1527 | 2.1%     | 2608                   | 2547 | -2.3%    |
| VIOLENT  | 116             | 83   | -28.4%   | 174               | 186  | 6.9%     | 290                    | 269  | -7.2%    |
| PROPERTY   | 996             | 937  | -5.9%    | 1322              | 1341 | 1.4%     | 2318                   | 2278 | -1.7%    |

The data in the district breakdowns does not include a small number of offenses in which the location of the offense was unknown or was entered without a valid tract assignment. Districts are not equal in geographic size, demographics, zoning/development, and other factors that influence the rate of crimes committed in an area. Therefore, the comparison of raw offense totals across districts is not advisable.

| Index Offenses Reported by Division and Service Area of Occurrence |             |             |                |                    |             |                |                        |             |                 |
|--|-------------|-------------|----------------|--------------------|-------------|----------------|------------------------|-------------|-----------------|
| Northeast Service Area: Jan-Apr, 2004-2005                         |             |             |                |                    |             |                |                        |             |                 |
| INDEX_CATEGORIES   | North (C1)  |             |                | Hickory Grove (C3) |             |                | Northeast Service Area |             |                 |
|  | 2004        | 2005        | % Change       | 2004               | 2005        | % Change       | 2004                   | 2005        | % Change        |
| MURDER & NON-NEGLIGENT<br>MANSLAUGHTER                             | 1           | 3           | 200.0%         | 1                  | 4           | 300.0%         | 2                      | 7           | 250.0%          |
| RAPE   | 14          | 13          | -7.1%          | 8                  | 8           | 0.0%           | 22                     | 21          | -4.5%           |
| ACTUAL   | 13          | 11          | -15.4%         | 8                  | 7           | -12.5%         | 21                     | 18          | -14.3%          |
| ATTEMPTED  | 1           | 2           | 100.0%         | 0                  | 1           | NA             | 1                      | 3           | 200.0%          |
| ROBBERY  | 70          | 67          | -4.3%          | 76                 | 86          | 13.2%          | 146                    | 153         | 4.8%            |
| ARMED  | 56          | 55          | -1.8%          | 60                 | 66          | 10.0%          | 116                    | 121         | 4.3%            |
| STRONG-ARM   | 14          | 12          | -14.3%         | 16                 | 20          | 25.0%          | 30                     | 32          | 6.7%            |
| AGGRAVATED ASSAULT   | 114         | 103         | -9.6%          | 168                | 113         | -32.7%         | 282                    | 216         | -23.4%          |
| BURGLARY   | 424         | 538         | 26.9%          | 375                | 476         | 26.9%          | 799                    | 1014        | 26.9%           |
| RESIDENTIAL  | 293         | 387         | 32.1%          | 281                | 305         | 8.5%           | 574                    | 692         | 20.6%           |
| COMMERCIAL   | 131         | 151         | 15.3%          | 94                 | 171         | 81.9%          | 225                    | 322         | 43.1%           |
| LARCENY  | 1293        | 1318        | 1.9%           | 672                | 621         | -7.6%          | 1965                   | 1939        | -1.3%           |
| FROM AUTO  | 743         | 730         | -1.7%          | 327                | 321         | -1.8%          | 1070                   | 1051        | -1.8%           |
| BICYCLE  | 9           | 6           | -33.3%         | 9                  | 6           | -33.3%         | 18                     | 12          | -33.3%          |
| SHOPLIFTING  | 117         | 122         | 4.3%           | 53                 | 54          | 1.9%           | 170                    | 176         | 3.5%            |
| OTHERS   | 424         | 460         | 8.5%           | 283                | 240         | -15.2%         | 707                    | 700         | -1.0%           |
| VEHICLE THEFT  | 231         | 317         | 37.2%          | 192                | 266         | 38.5%          | 423                    | 583         | 37.8%           |
| ARSON  | 10          | 15          | 50.0%          | 15                 | 9           | -40.0%         | 25                     | 24          | -4.0%           |
| TOTALS   | 2157        | 2374        | 10.1%          | 1507               | 1583        | 5.0%           | 3664                   | 3957        | 8.0%            |
| VIOLENT<br>PROPERTY  | 199<br>1958 | 186<br>2188 | -6.5%<br>11.7% | 253<br>1254        | 211<br>1372 | -16.6%<br>9.4% | 452<br>3212            | 397<br>3560 | -12.2%<br>10.8% |

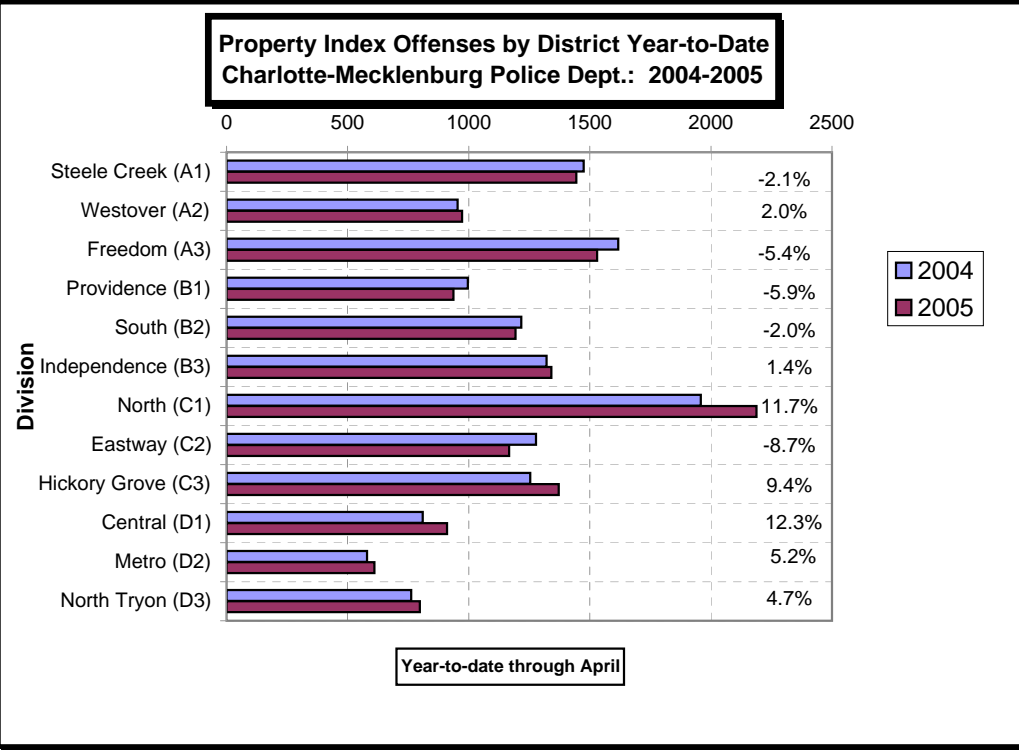
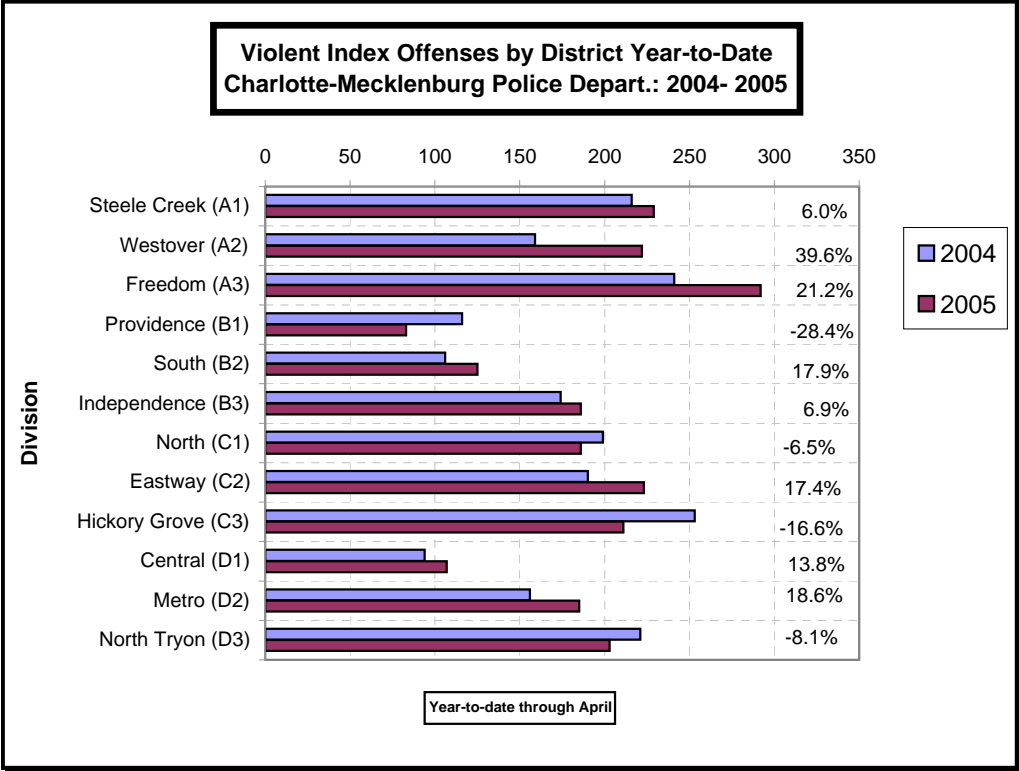
| Index Offenses Reported by Division and Service Area of Occurrence |              |            |                |            |            |               |                      |             |               |
|--|--------------|------------|----------------|------------|------------|---------------|----------------------|-------------|---------------|
| Central Service Area: Jan-Apr, 2004-2005                           |              |            |                |            |            |               |                      |             |               |
| INDEX_CATEGORIES   | Central (D1) |            |                | Metro (D2) |            |               | Central Service Area |             |               |
|  | 2004         | 2005       | % Change       | 2004       | 2005       | % Change      | 2004                 | 2005        | % Change      |
| MURDER & NON-NEGLIGENT<br>MANSLAUGHTER                             | 0            | 0          | NA             | 3          | 3          | 0.0%          | 3                    | 3           | 0.0%          |
| RAPE   | 6            | 8          | 33.3%          | 11         | 2          | -81.8%        | 17                   | 10          | -41.2%        |
| ACTUAL   | 5            | 7          | 40.0%          | 10         | 3          | -70.0%        | 15                   | 10          | -33.3%        |
| ATTEMPTED  | 1            | 1          | 0.0%           | 1          | -1         | -200.0%       | 2                    | 0           | -100.0%       |
| ROBBERY  | 39           | 58         | 48.7%          | 49         | 71         | 44.9%         | 88                   | 129         | 46.6%         |
| ARMED  | 22           | 35         | 59.1%          | 42         | 56         | 33.3%         | 64                   | 91          | 42.2%         |
| STRONG-ARM   | 17           | 23         | 35.3%          | 7          | 15         | 114.3%        | 24                   | 38          | 58.3%         |
| AGGRAVATED ASSAULT   | 49           | 41         | -16.3%         | 93         | 109        | 17.2%         | 142                  | 150         | 5.6%          |
| BURGLARY   | 120          | 127        | 5.8%           | 166        | 209        | 25.9%         | 286                  | 336         | 17.5%         |
| RESIDENTIAL  | 44           | 41         | -6.8%          | 125        | 170        | 36.0%         | 169                  | 211         | 24.9%         |
| COMMERCIAL   | 76           | 86         | 13.2%          | 41         | 39         | -4.9%         | 117                  | 125         | 6.8%          |
| LARCENY  | 601          | 694        | 15.5%          | 310        | 281        | -9.4%         | 911                  | 975         | 7.0%          |
| FROM AUTO  | 320          | 378        | 18.1%          | 132        | 116        | -12.1%        | 452                  | 494         | 9.3%          |
| BICYCLE  | 5            | 3          | -40.0%         | 1          | 3          | 200.0%        | 6                    | 6           | 0.0%          |
| SHOPLIFTING  | 21           | 14         | -33.3%         | 26         | 11         | -57.7%        | 47                   | 25          | -46.8%        |
| OTHERS   | 255          | 299        | 17.3%          | 151        | 151        | 0.0%          | 406                  | 450         | 10.8%         |
| VEHICLE THEFT  | 89           | 89         | 0.0%           | 99         | 114        | 15.2%         | 188                  | 203         | 8.0%          |
| ARSON  | 0            | 0          | NA             | 5          | 6          | 20.0%         | 5                    | 6           | 20.0%         |
| TOTALS   | 904          | 1017       | 12.5%          | 736        | 795        | 8.0%          | 1640                 | 1812        | 10.5%         |
| VIOLENT<br>PROPERTY  | 94<br>810    | 107<br>910 | 13.8%<br>12.3% | 156<br>580 | 185<br>610 | 18.6%<br>5.2% | 250<br>1390          | 292<br>1520 | 16.8%<br>9.4% |

The data in the district breakdowns does not include a small number of offenses in which the location of the offense was unknown or was entered without a valid tract assignment. Districts are not equal in geographic size, demographics, zoning/development, and other factors that influence the rate of crimes committed in an area. Therefore, the comparison of raw offense totals across districts is not advisable.

| Index Offenses Reported by Division and Service Area of Occurrence |              |             |                |                  |            |               |                   |             |               |
|--|--------------|-------------|----------------|------------------|------------|---------------|-------------------|-------------|---------------|
| East Service Area: Jan-Apr, 2004-2005                              |              |             |                |                  |            |               |                   |             |               |
| INDEX_CATEGORIES   | Eastway (C2) |             |                | North Tryon (D3) |            |               | East Service Area |             |               |
|  | 2004         | 2005        | % Change       | 2004             | 2005       | % Change      | 2004              | 2005        | % Change      |
| MURDER & NON-NEGLIGENT<br>MANSLAUGHTER                             | 3            | 2           | -33.3%         | 2                | 1          | -50.0%        | 5                 | 3           | -40.0%        |
| RAPE   | 7            | 9           | 28.6%          | 8                | 5          | -37.5%        | 15                | 14          | -6.7%         |
| ACTUAL   | 7            | 9           | 28.6%          | 7                | 5          | -28.6%        | 14                | 14          | 0.0%          |
| ATTEMPTED  | 0            | 0           | NA             | 1                | 0          | -100.0%       | 1                 | 0           | -100.0%       |
| ROBBERY  | 84           | 132         | 57.1%          | 74               | 97         | 31.1%         | 158               | 229         | 44.9%         |
| ARMED  | 60           | 100         | 66.7%          | 55               | 82         | 49.1%         | 115               | 182         | 58.3%         |
| STRONG-ARM   | 24           | 32          | 33.3%          | 19               | 15         | -21.1%        | 43                | 47          | 9.3%          |
| AGGRAVATED ASSAULT   | 96           | 80          | -16.7%         | 137              | 100        | -27.0%        | 233               | 180         | -22.7%        |
| BURGLARY   | 312          | 290         | -7.1%          | 216              | 247        | 14.4%         | 528               | 537         | 1.7%          |
| RESIDENTIAL  | 203          | 208         | 2.5%           | 154              | 155        | 0.6%          | 357               | 363         | 1.7%          |
| COMMERCIAL   | 109          | 82          | -24.8%         | 62               | 95         | 53.2%         | 171               | 177         | 3.5%          |
| LARCENY  | 799          | 729         | -8.8%          | 411              | 413        | 0.5%          | 1210              | 1142        | -5.6%         |
| FROM AUTO  | 300          | 269         | -10.3%         | 201              | 206        | 2.5%          | 501               | 475         | -5.2%         |
| BICYCLE  | 7            | 5           | -28.6%         | 4                | 2          | -50.0%        | 11                | 7           | -36.4%        |
| SHOPLIFTING  | 239          | 196         | -18.0%         | 28               | 23         | -17.9%        | 267               | 219         | -18.0%        |
| OTHERS   | 253          | 259         | 2.4%           | 178              | 182        | 2.2%          | 431               | 441         | 2.3%          |
| VEHICLE THEFT  | 156          | 140         | -10.3%         | 131              | 134        | 2.3%          | 287               | 274         | -4.5%         |
| ARSON  | 11           | 8           | -27.3%         | 4                | 4          | 0.0%          | 15                | 12          | -20.0%        |
| TOTALS   | 1468         | 1390        | -5.3%          | 983              | 1001       | 1.8%          | 2451              | 2391        | -2.4%         |
| VIOLENT<br>PROPERTY  | 190<br>1278  | 223<br>1167 | 17.4%<br>-8.7% | 221<br>762       | 203<br>798 | -8.1%<br>4.7% | 411<br>2040       | 426<br>1965 | 3.6%<br>-3.7% |

| Index Offenses Reported by Division and Service Area of Occurrence |                   |             |               |             |             |                |                    |             |               |
|--|-------------------|-------------|---------------|-------------|-------------|----------------|--------------------|-------------|---------------|
| South Service Area: Jan-Apr, 2004-2005                             |                   |             |               |             |             |                |                    |             |               |
| INDEX_CATEGORIES   | Steele Creek (A1) |             |               | South (B2)  |             |                | South Service Area |             |               |
|  | 2004              | 2005        | % Change      | 2004        | 2005        | % Change       | 2004               | 2005        | % Change      |
| MURDER & NON-NEGLIGENT<br>MANSLAUGHTER                             | 5                 | 0           | -100.0%       | 0           | 1           | NA             | 5                  | 1           | -80.0%        |
| RAPE   | 10                | 8           | -20.0%        | 7           | 3           | -57.1%         | 17                 | 11          | -35.3%        |
| ACTUAL   | 10                | 8           | -20.0%        | 7           | 3           | -57.1%         | 17                 | 11          | -35.3%        |
| ATTEMPTED  | 0                 | 0           | NA            | 0           | 0           | NA             | 0                  | 0           | NA            |
| ROBBERY  | 61                | 95          | 55.7%         | 39          | 63          | 61.5%          | 100                | 158         | 58.0%         |
| ARMED  | 47                | 77          | 63.8%         | 29          | 55          | 89.7%          | 76                 | 132         | 73.7%         |
| STRONG-ARM   | 14                | 18          | 28.6%         | 10          | 8           | -20.0%         | 24                 | 26          | 8.3%          |
| AGGRAVATED ASSAULT   | 140               | 126         | -10.0%        | 60          | 58          | -3.3%          | 200                | 184         | -8.0%         |
| BURGLARY   | 302               | 279         | -7.6%         | 267         | 283         | 6.0%           | 569                | 562         | -1.2%         |
| RESIDENTIAL  | 225               | 155         | -31.1%        | 214         | 202         | -5.6%          | 439                | 357         | -18.7%        |
| COMMERCIAL   | 77                | 124         | 61.0%         | 53          | 81          | 52.8%          | 130                | 205         | 57.7%         |
| LARCENY  | 958               | 927         | -3.2%         | 828         | 762         | -8.0%          | 1786               | 1689        | -5.4%         |
| FROM AUTO  | 493               | 504         | 2.2%          | 457         | 450         | -1.5%          | 950                | 954         | 0.4%          |
| BICYCLE  | 6                 | 2           | -66.7%        | 2           | 2           | 0.0%           | 8                  | 4           | -50.0%        |
| SHOPLIFTING  | 159               | 77          | -51.6%        | 48          | 47          | -2.1%          | 207                | 124         | -40.1%        |
| OTHERS   | 300               | 344         | 14.7%         | 321         | 263         | -18.1%         | 621                | 607         | -2.3%         |
| VEHICLE THEFT  | 201               | 228         | 13.4%         | 113         | 140         | 23.9%          | 314                | 368         | 17.2%         |
| ARSON  | 14                | 10          | -28.6%        | 9           | 8           | -11.1%         | 23                 | 18          | -21.7%        |
| TOTALS   | 1691              | 1673        | -1.1%         | 1323        | 1318        | -0.4%          | 3014               | 2991        | -0.8%         |
| VIOLENT<br>PROPERTY  | 216<br>1475       | 229<br>1444 | 6.0%<br>-2.1% | 106<br>1217 | 125<br>1193 | 17.9%<br>-2.0% | 322<br>2692        | 354<br>2637 | 9.9%<br>-2.0% |

The data in the district breakdowns does not include a small number of offenses in which the location of the offense was unknown or was entered without a valid tract assignment. Districts are not equal in geographic size, demographics, zoning/development, and other factors that influence the rate of crimes committed in an area. Therefore, the comparison of raw offense totals across districts is not advisable.



The data in the district breakdowns does not include a small number of offenses in which the location of the offense was unknown or was entered without a valid tract assignment in 2004. Districts are not equal in geographic size, demographics, zoning/development, and other factors that influence the rate of crimes committed in an area. Therefore, the comparison of raw offense totals across districts is not advisable.

**Arrests by Charlotte-Mecklenburg Police Department**  
**Year-To-Date: 2004-2005**  
**(Through April)**

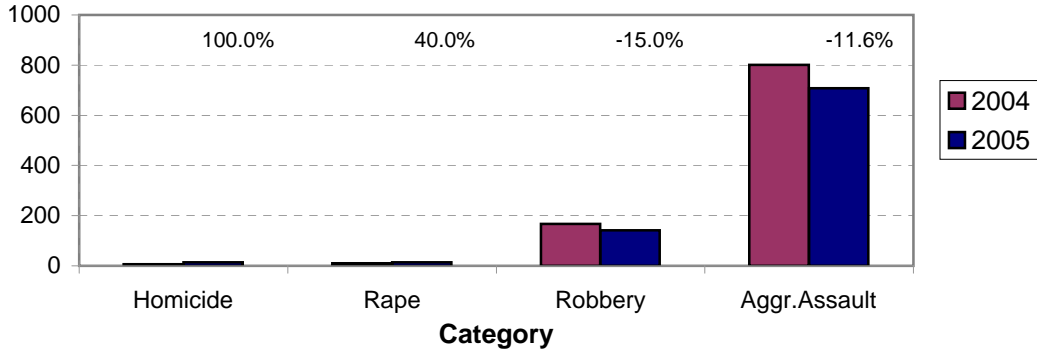
| CATEGORY                           | ADULTS (AGE 18 & OLDER): |               |             | JUVENILES ( UNDER 18): |               |             | TOTAL ARRESTS: |               |             |
|------------------------------------|--------------------------|---------------|-------------|------------------------|---------------|-------------|----------------|---------------|-------------|
|                                    | 2004<br>Y-T-D            | 2005<br>Y-T-D | %<br>CHANGE | 2004<br>Y-T-D          | 2005<br>Y-T-D | %<br>CHANGE | 2004<br>Y-T-D  | 2005<br>Y-T-D | %<br>CHANGE |
| Murder/Non-Negligent Manslaughter  | 7                        | 13            | 85.7%       | 0                      | 1             | NA          | 7              | 14            | 100.0%      |
| Negligent & Vehicular Manslaughter | 3                        | 3             | 0.0%        | 0                      | 0             | NA          | 3              | 3             | 0.0%        |
| Rape                               | 9                        | 14            | 55.6%       | 1                      | 0             | -100.0%     | 10             | 14            | 40.0%       |
| Robbery                            | 108                      | 106           | -1.9%       | 59                     | 36            | -39.0%      | 167            | 142           | -15.0%      |
| Aggravated Assault                 | 666                      | 611           | -8.3%       | 135                    | 97            | -28.1%      | 801            | 708           | -11.6%      |
| Burglary                           | 184                      | 211           | 14.7%       | 63                     | 75            | 19.0%       | 247            | 286           | 15.8%       |
| Larceny                            | 511                      | 513           | 0.4%        | 212                    | 153           | -27.8%      | 723            | 666           | -7.9%       |
| Vehicle Theft                      | 33                       | 37            | 12.1%       | 65                     | 23            | -64.6%      | 98             | 60            | -38.8%      |
| Non-Aggravated Assault             | 598                      | 623           | 4.2%        | 319                    | 279           | -12.5%      | 917            | 902           | -1.6%       |
| Arson                              | 6                        | 1             | -83.3%      | 10                     | 5             | -50.0%      | 16             | 6             | -62.5%      |
| Forgery/Counterfiet                | 39                       | 54            | 38.5%       | 2                      | 2             | 0.0%        | 41             | 56            | 36.6%       |
| Fraud                              | 185                      | 179           | -3.2%       | 3                      | 0             | -100.0%     | 188            | 179           | -4.8%       |
| Embezzlement                       | 26                       | 21            | -19.2%      | 4                      | 1             | -75.0%      | 30             | 22            | -26.7%      |
| Stolen Property                    | 152                      | 138           | -9.2%       | 32                     | 35            | 9.4%        | 184            | 173           | -6.0%       |
| Vandalism                          | 78                       | 65            | -16.7%      | 76                     | 58            | -23.7%      | 154            | 123           | -20.1%      |
| Weapons                            | 143                      | 185           | 29.4%       | 21                     | 32            | 52.4%       | 164            | 217           | 32.3%       |
| Prostitution                       | 95                       | 52            | -45.3%      | 5                      | 1             | -80.0%      | 100            | 53            | -47.0%      |
| Sex Offenses                       | 59                       | 58            | -1.7%       | 5                      | 7             | 40.0%       | 64             | 65            | 1.6%        |
| Drugs                              | 931                      | 886           | -4.8%       | 87                     | 94            | 8.0%        | 1018           | 980           | -3.7%       |
| Gambling                           | 10                       | 1             | -90.0%      | 0                      | 0             | NA          | 10             | 1             | -90.0%      |
| Offenses vs. Family                | 1                        | 4             | 300.0%      | 1                      | 0             | -100.0%     | 2              | 4             | 100.0%      |
| DUI                                | 631                      | 686           | 8.7%        | 5                      | 5             | 0.0%        | 636            | 691           | 8.6%        |
| Liquor                             | 67                       | 43            | -35.8%      | 2                      | 4             | 100.0%      | 69             | 47            | -31.9%      |
| Disorder.Conduct                   | 161                      | 166           | 3.1%        | 120                    | 136           | 13.3%       | 281            | 302           | 7.5%        |
| Other Non-Traffic                  | 2598                     | 2586          | -0.5%       | 298                    | 251           | -15.8%      | 2896           | 2837          | -2.0%       |
| <b>VIOLENT INDEX<sup>1</sup></b>   | 790                      | 744           | -5.8%       | 195                    | 134           | -31.3%      | 985            | 878           | -10.9%      |
| <b>PROPERTY INDEX<sup>2</sup></b>  | 734                      | 762           | 3.8%        | 350                    | 256           | -26.9%      | 1084           | 1018          | -6.1%       |
| <b>INDEX SUBTOTAL</b>              | 1524                     | 1506          | -1.2%       | 545                    | 390           | -28.4%      | 2069           | 1896          | -8.4%       |
| <b>PART 2 SUBTOTAL<sup>3</sup></b> | 5777                     | 5750          | -0.5%       | 980                    | 905           | -7.7%       | 6757           | 6655          | -1.5%       |
| <b>TOTAL</b>                       | 7301                     | 7256          | -0.6%       | 1525                   | 1295          | -15.1%      | 8826           | 8551          | -3.1%       |

<sup>1</sup>Violent Index includes murder and non-negligent manslaughter, rape, robbery, and aggravated assault.

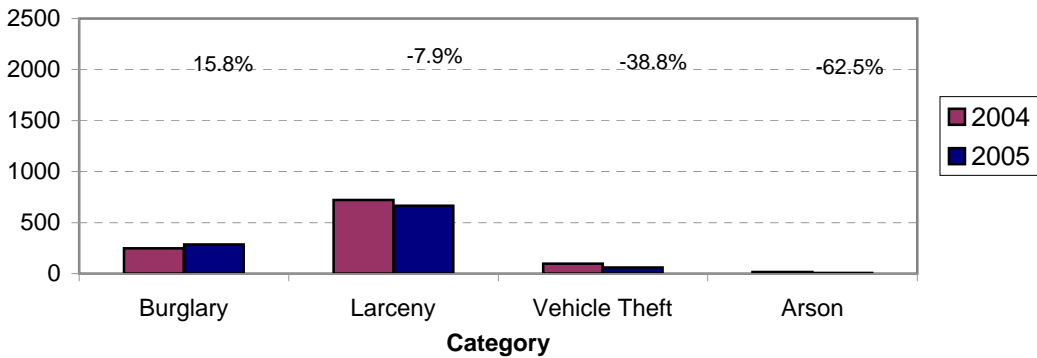
<sup>2</sup>Property Index includes burglary, larceny, vehicle theft, and arson.

<sup>3</sup>Part 2 crimes include crime categories not counted in the Index totals.

**Violent Index Arrests Year-to-Date  
Charlotte-Mecklenburg Police Department: 2004-2005  
(Through April)**

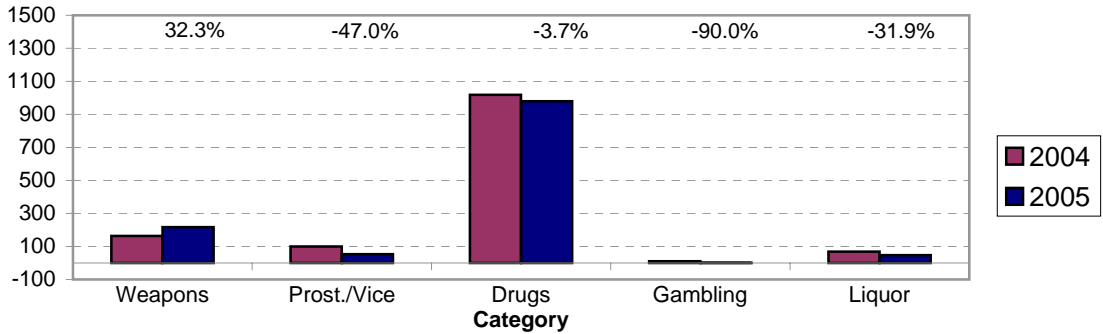


**Property Index Arrests Year-to-Date  
Charlotte-Mecklenburg Police Department: 2004-2005  
(Through April)**

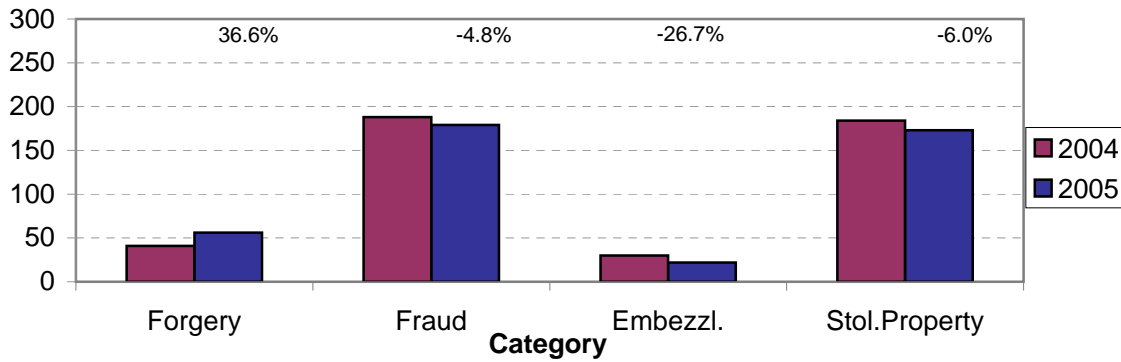




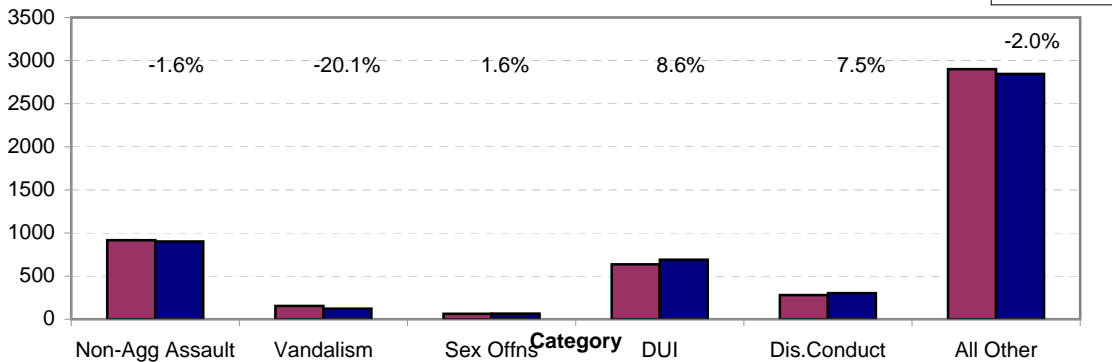
**Arrests for Vice/CCW/Drugs/Etc. Year-to-Date  
Charlotte-Mecklenburg Police Department: 2004 - 2005  
(Through April)**



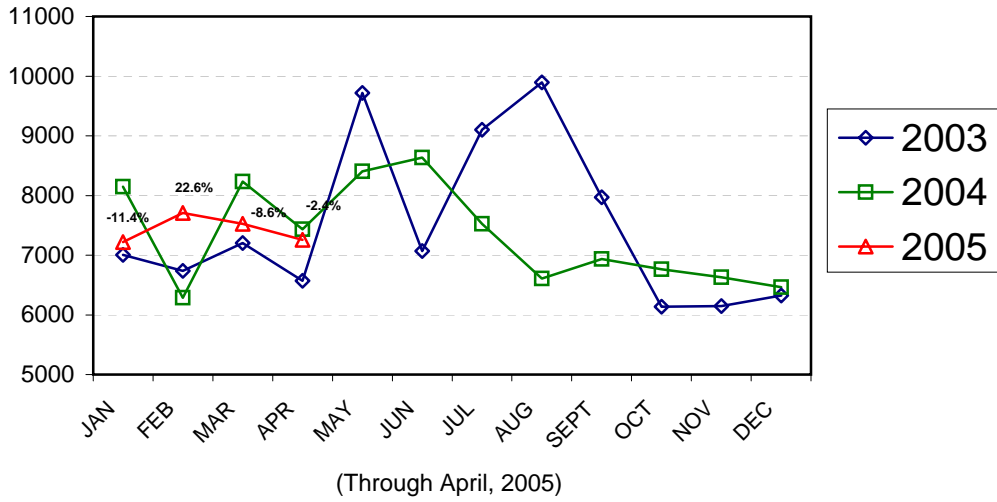
**Arrests for Property/White Collar Crime Year-to-Date  
Charlotte-Mecklenburg Police Department: 2004- 2005  
(Through April)**



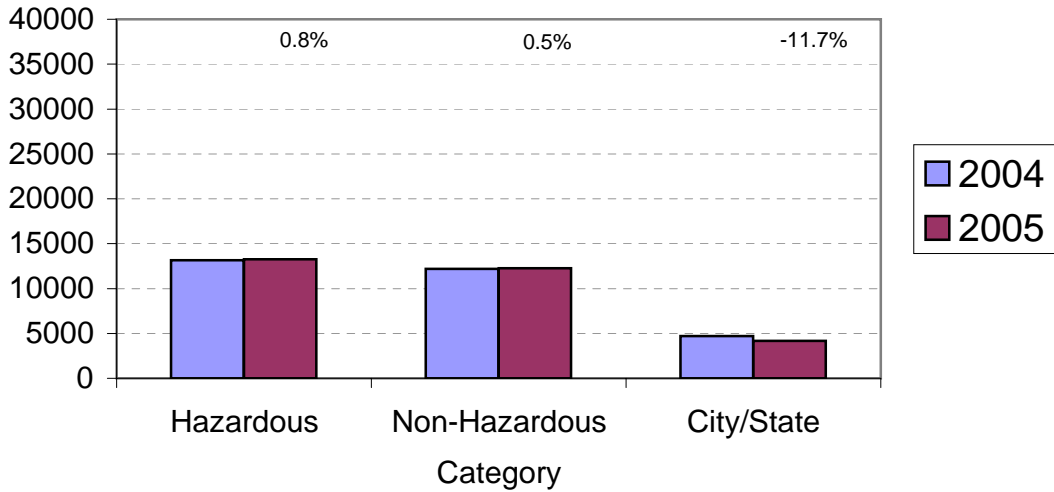
**Arrests for Other Categories Year-to-Date  
Charlotte-Mecklenburg Police Department: 2004 - 2005  
(Through April)**



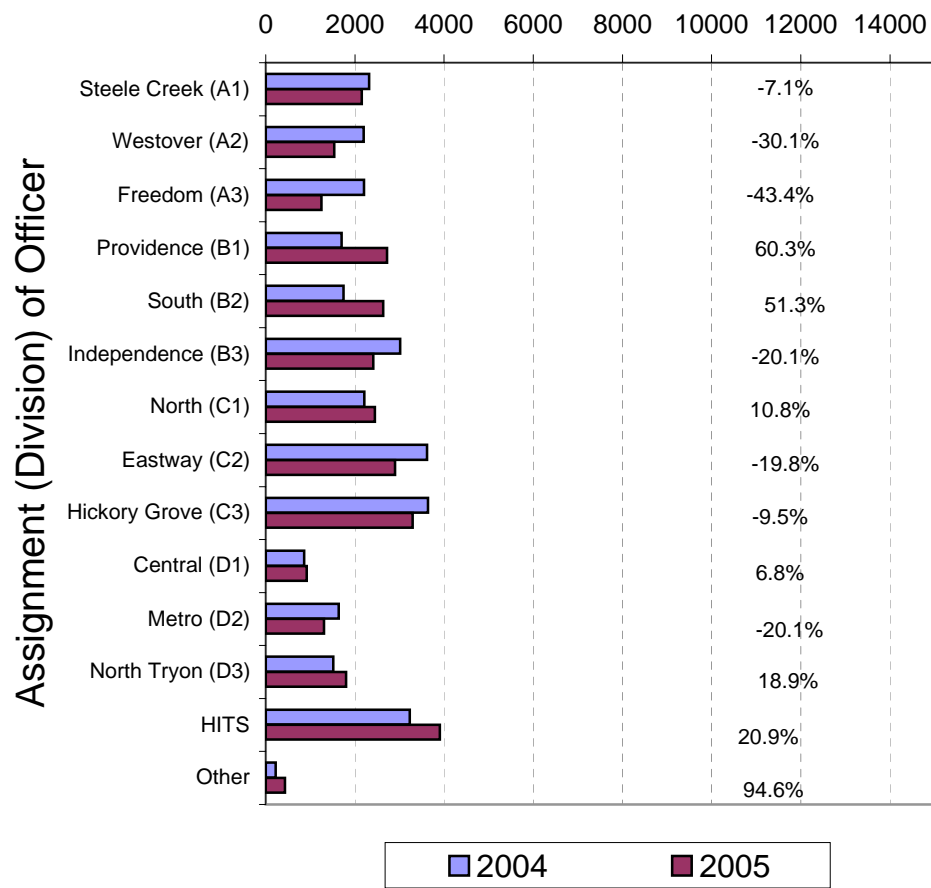
**Total Citation Enforcement by Month  
Charlotte-Mecklenburg Police Dept.: 2003-2005**



**CMPD Citation Enforcement by Category  
Year-to-Date, 2004 - 2005  
(Through April, 2005)**



**Citations Issued Year-to-Date by CMPD Divisions  
2004 - 2005  
(Through April, 2005)**

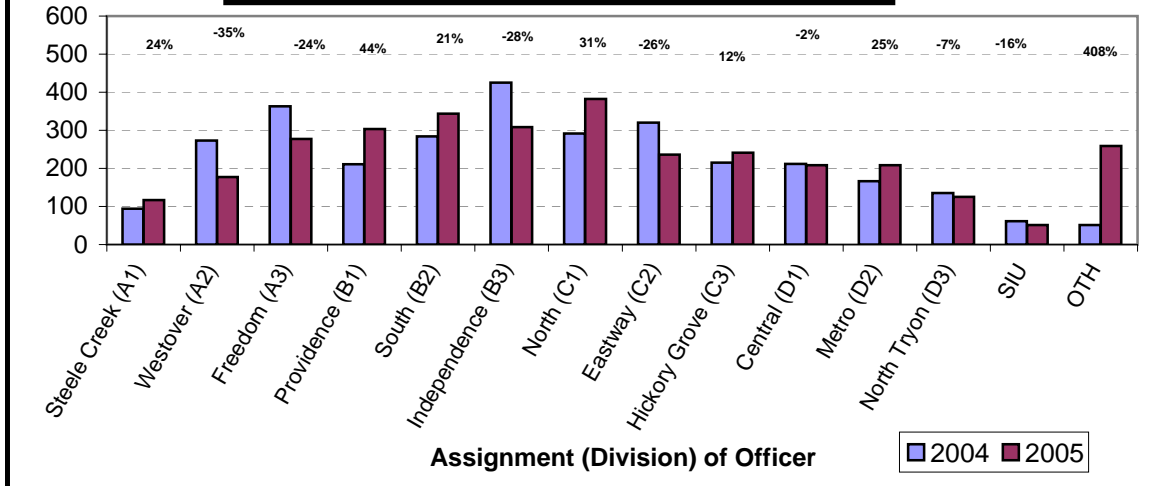


Note: 2003 and 2004 data for HITS and Other was adjusted in April, 2004.

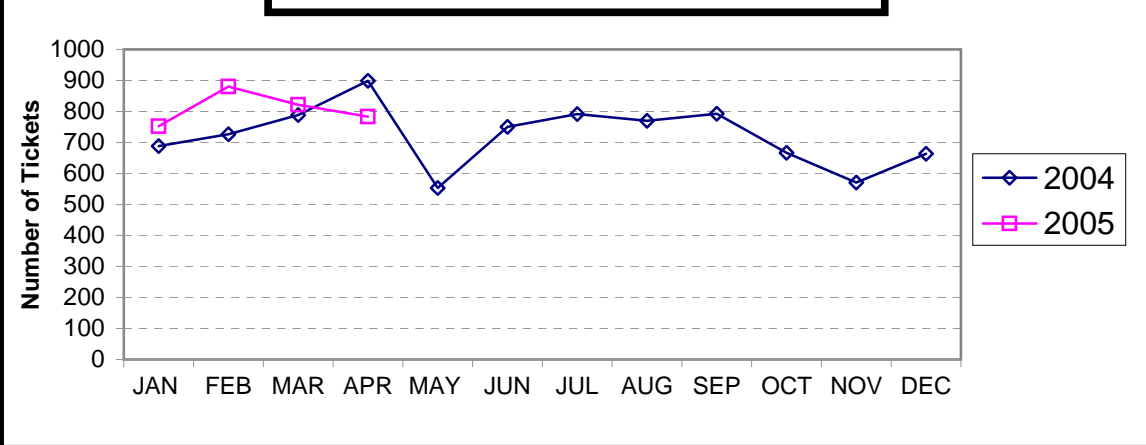
| <b>Citations Issued by the Charlotte Mecklenburg Police Officers Year-to-Date<br/>(Through April, 2005)</b> |               |               |                 |
|---|---------------|---------------|-----------------|
| <b>Total Citations</b>  | <b>2004</b>   | <b>2005</b>   | <b>% Change</b> |
| Hazardous   | 13,171        | 13,275        | 0.8%            |
| Non-Hazardous   | 12,206        | 12,265        | 0.5%            |
| Other City/State Statute/Ordinance  | 4,721         | 4,167         | -11.7%          |
| <b>Total</b>  | <b>30,098</b> | <b>29,707</b> | <b>-1.3%</b>    |

| <b>"Safe Speed" Program: 2005<br/>(Through April, 2005)</b>   |       |
|---|-------|
| Total Citations   | 12102 |
| (Citations issued through the "Safe Speed" program are not included in the CMPD citation totals used in the summary chart above or in the other citation charts.) |       |

**Warning Tickets Issued by CMPD Division  
Year-to-Date, 2004 - 2005  
Through April, 2005**



**Total Warning Tickets Issued by CMPD  
By Month: 2004 - 2005**



**Warning Tickets Issued by CMPD Year-to-Date  
Through April, 2005**

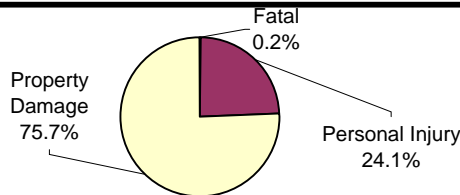
|                              | 2004 | 2005 | % Change |
|------------------------------|------|------|----------|
| <b>Total Warning Tickets</b> | 3102 | 3236 | 4.3%     |

**Traffic Collision Reports  
Charlotte-Mecklenburg Police Department  
Year-to-Date: 2004-2005  
(Through April)**

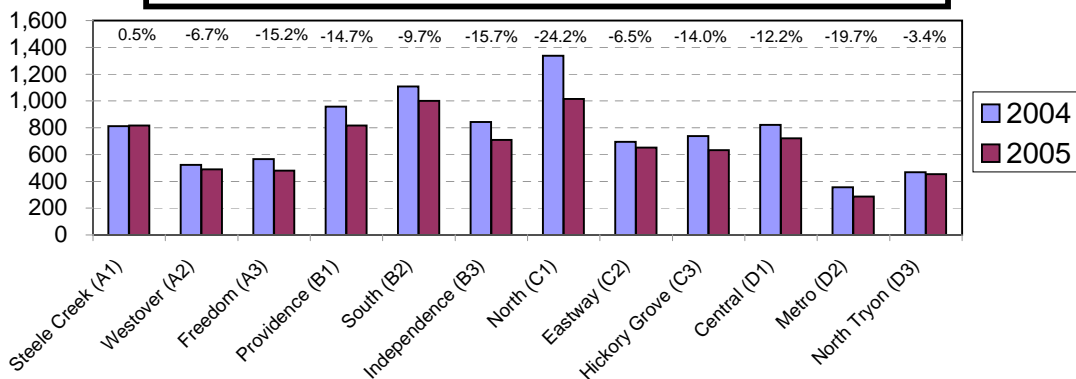
| <u>Type</u>                | <u>2004</u> | <u>2005</u> | <u>% Change</u> |
|----------------------------|-------------|-------------|-----------------|
| Fatal Collisions           | 13          | 13          | 0.0%            |
| Vehicle Occupants Killed   | 11          | 11          | 0.0%            |
| Pedestrians Killed         | 3           | 3           | 0.0%            |
| Personal Injury Collisions | 2274        | 1945        | -14.4%          |
| Property Damage Collisions | 6976        | 6137        | -12.0%          |
| Total Collisions           | 9263        | 8095        | -12.6%          |

\* The number of fatal collisions and the number of persons killed (fatalities) in those incidents is taken from the HITS file. Their records are updated for deaths that occur after the initial report is filed.

**Traffic Collisions Reported by Type  
Charlotte-Mecklenburg Police Department:  
2005 Year-to-Date  
(Through April)**



**Traffic Collisions Reported by Charlotte-Mecklenburg Police Dept.  
Year-to-Date By Location (Division) : 2004 -2005  
(Through April)**



Uniform Crime Reporting Procedures:

The Charlotte-Mecklenburg Police Department reports offense and arrest statistics in accordance with standard Uniform Crime Reporting (UCR) guidelines. UCR policy states that any adjustments to previous months can be made on the current month's report:

...In tabulating crime counts, an agency may find that offense totals for past months require adjustments due to developments in the investigation or other handling of the matter. It may be necessary to adjust totals reported to UCR for the past month or prior months. Needed adjustments can be made on the current month's report and do not affect the reliability of the figures in that such adjustments tend to equalize each other from month to month over a period of time.

- *Uniform Crime Reporting Handbook*, FBI, 1984, p. 42-43

We are required to report crime monthly to the UCR program, and we do therefore make an effort to process monthly changes in a timely manner. However, occasionally due to the review and processing required for reclassifying, unfounding or clearing cases, the current month's totals may reflect the processing of a backlog of these changes from previous months.

Users of the data are cautioned that conclusions about substantial changes in crime trends or in clearance rates based on only a single month's data or trend may reflect some of these adjustments. For this reason, in addition to the monthly and year-to-date trends on Page 1, the monthly report routinely includes a comparison for the previous 12 months (p. 4), as well as graphs that provide seasonal/monthly comparisons over a five-year period (p. 5-8).

This report was compiled by the Research, Planning, and Analysis Division with the assistance of volunteer Doris Bowen.

We make an effort to present the most accurate information available at the time this report is published. Please notify the Research, Planning, and Analysis office if you have any questions about the data in this report or about an error that was missed in proofing the report.

The division names adopted in 2003 are used in this report; the old district designations is shown in parentheses.