



**CHARLOTTE-MECKLENBURG POLICE DEPARTMENT
MONTHLY SUMMARY REPORT
MARCH, 2005**

**Darrel Stephens
Chief of Police**

INDEX OFFENSES REPORTED TO CHARLOTTE-MECKLENBURG POLICE DEPARTMENT

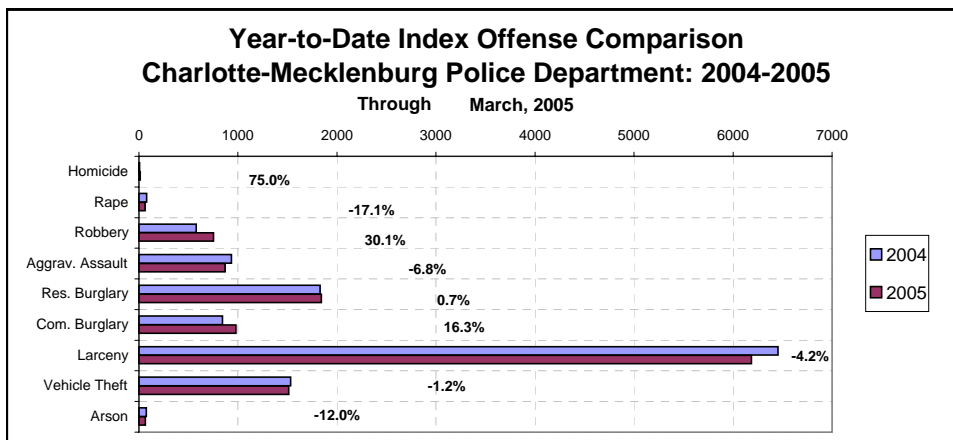
March, 2005 INDEX OFFENSES	# THIS MONTH	% OF ALL INDEX	# LAST MONTH	MONTHLY % CHANGE	SAME MONTH LAST YEAR	MONTHLY % CHANGE	THIS YEAR TO DATE	LAST YEAR TO DATE	ANNUAL % CHANGE
HOMICIDE (MURDER & NON-NEGLIGENT MANSLAUGHTER)	4	0.1%	3	33.3%	4	0.0%	14	8	75.0%
RAPE TOTAL	17	0.4%	19	-10.5%	24	-29.2%	63	76	-17.1%
ACTUAL	15	0.3%	19	-21.1%	24	-37.5%	60	72	-16.7%
ATTEMPT	2	0.0%	0	NA	0	NA	3	4	-25.0%
ROBBERY TOTAL	221	5.1%	203	8.9%	186	18.8%	753	579	30.1%
ARMED	178	4.1%	162	9.9%	129	38.0%	603	430	40.2%
STRONG-ARM	43	1.0%	41	4.9%	57	-24.6%	150	149	0.7%
AGGRAVATED ASSAULT TOTAL	323	7.5%	235	37.4%	371	-12.9%	870	933	-6.8%
BURGLARY TOTAL	974	22.7%	787	23.8%	967	0.7%	2822	2672	5.6%
RESIDENTIAL	634	14.8%	504	25.8%	669	-5.2%	1843	1830	0.7%
COMMERCIAL	340	7.9%	283	20.1%	298	14.1%	979	842	16.3%

FORCE	792	18.4%	659	20.2%	782	1.3%	2308	2121	8.8%
NO FORCE	115	2.7%	76	51.3%	131	-12.2%	317	376	-15.7%
ATTEMPT	67	1.6%	52	28.8%	54	24.1%	197	175	12.6%
LARCENY TOTAL	2197	51.1%	1752	25.4%	2472	-11.1%	6186	6455	-4.2%
\$200 AND OVER	1137	26.5%	833	36.5%	1163	-2.2%	3070	3097	-0.9%
\$50 TO \$200	404	9.4%	382	5.8%	447	-9.6%	1211	1170	3.5%
UNDER \$50	656	15.3%	537	22.2%	862	-23.9%	1905	2188	-12.9%

FROM AUTO	1119	26.0%	805	39.0%	1244	-10.0%	3160	3296	-4.1%
BICYCLE	10	0.2%	8	25.0%	20	-50.0%	29	40	-27.5%
SHOPLIFTING	224	5.2%	181	23.8%	293	-23.5%	590	719	-17.9%
OTHERS	844	19.6%	758	11.3%	915	-7.8%	2407	2400	0.3%
VEHICLE THEFT TOTAL	537	12.5%	369	45.5%	508	5.7%	1513	1532	-1.2%
ARSON TOTAL	25	0.6%	22	13.6%	28	-10.7%	66	75	-12.0%
TOTALS	4298	100.0%	3390	26.8%	4560	-5.7%	12287	12330	-0.3%
VIOLENT PROPERTY	565	13.1%	460	22.8%	585	-3.4%	1700	1596	6.5%
PROPERTY	3733	86.9%	2930	27.4%	3975	-6.1%	10587	10734	-1.4%

NOTE: Internal robbery breakdowns by armed and strong-arm in October, 2004, reflect the late reclassification of some cases from previous months from armed robbery to strong-arm robbery.

NOTE: These totals include offenses reported to the Charlotte-Mecklenburg Police Department in accordance with the Uniform Crime Reporting Program. Totals for homicide do not include cases investigated by the police but classed by UCR guidelines as negligent manslaughter or as "justifiable homicide."

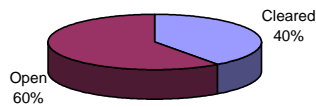


INDEX CLEARANCES REPORTED BY THE CHARLOTTE-MECKLENBURG POLICE DEPARTMENT

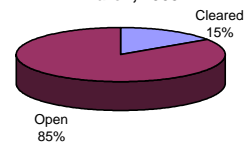
March, 2005 INDEX CLEARANCES	THIS MONTH:		LAST MONTH:		SAME MO. LAST YR:		THIS YEAR TO DATE:		LAST YEAR TO DATE:	
	NO.	%	NO.	%	NO.	%	NO.	%	NO.	%
MURDER & NON-NEGLIGENT MANSLAUGHTER	1	25.0%	4	133.3%	4	100.0%	7	50.0%	5	62.5%
RAPE TOTAL	12	70.6%	26	136.8%	27	112.5%	62	98.4%	61	80.3%
ACTUAL	9	60.0%	21	110.5%	23	95.8%	51	85.0%	55	76.4%
ATTEMPT	3	150.0%	5	#DIV/0!	4	#DIV/0!	11	366.7%	6	150.0%
ROBBERY TOTAL	80	36.2%	40	19.7%	90	48.4%	190	25.2%	211	36.4%
ARMED	63	35.4%	28	17.3%	68	52.7%	150	24.9%	151	35.1%
STRONG-ARM	17	39.5%	12	29.3%	22	38.6%	40	26.7%	60	40.3%
AGGRAVATED ASSAULT TOTAL	131	40.6%	129	54.9%	242	65.2%	420	48.3%	560	60.0%
BURGLARY TOTAL	117	12.0%	128	16.3%	60	6.2%	397	14.1%	276	10.3%
RESIDENTIAL	91	14.4%	110	21.8%	48	7.2%	321	17.4%	219	12.0%
COMMERCIAL	26	7.6%	18	6.4%	12	4.0%	76	7.8%	57	6.8%
LARCENY TOTAL	321	14.6%	308	17.6%	237	9.6%	956	15.5%	809	12.5%
FROM AUTO	29	2.6%	62	7.7%	26	2.1%	126	4.0%	89	2.7%
BICYCLE	2	20.0%	2	25.0%	0	0.0%	6	20.7%	3	7.5%
SHOPLIFTING	154	68.8%	125	69.1%	166	56.7%	409	69.3%	387	53.8%
OTHERS	136	16.1%	119	15.7%	45	4.9%	415	17.2%	330	13.8%
VEHICLE THEFT TOTAL	111	20.7%	70	19.0%	83	16.3%	272	18.0%	280	18.3%
ARSON TOTAL	5	20.0%	1	4.5%	6	21.4%	13	19.7%	20	26.7%
TOTALS	778	18.1%	706	20.8%	749	16.4%	2317	18.9%	2222	18.0%
VIOLENT PROPERTY	224	39.6%	199	43.3%	363	62.1%	679	39.9%	837	52.4%
	554	14.8%	507	17.3%	386	9.7%	1638	15.5%	1385	12.9%

NOTE: Clearances are reported in accordance with Uniform Crime Report guidelines. Since clearances are not counted until they are entered until they are entered into the Records system, any delays in processing may result in some clearances being reported in succeeding months. The significant increase in clearances in Nov., 2003, was the result of the entry of clearances from 2002 and 2003 that were processed in the Case Management system but were not entered in the mainframe Records system until that month.

**Year-to-Date Violent Index Clearance Rate
Charlotte-Mecklenburg Police Department: 2004
March, 2005**

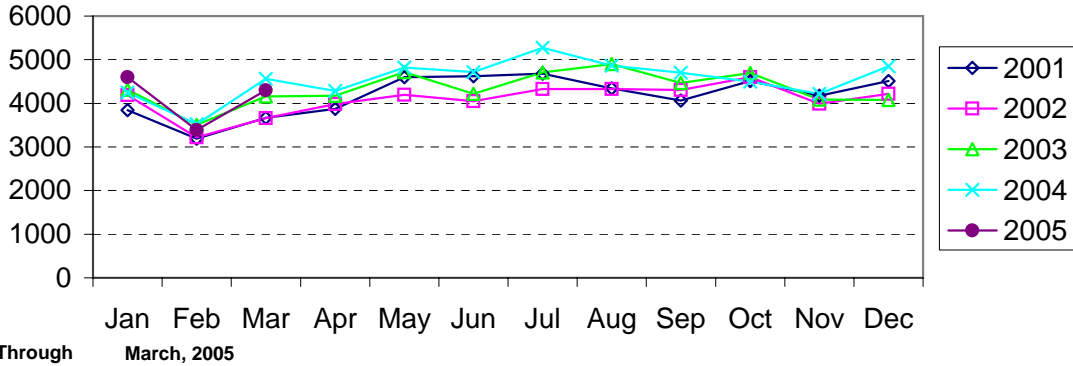


**Year-to-Date Property Index Clearance Rate
Charlotte-Mecklenburg Police Department: 2004
March, 2005**

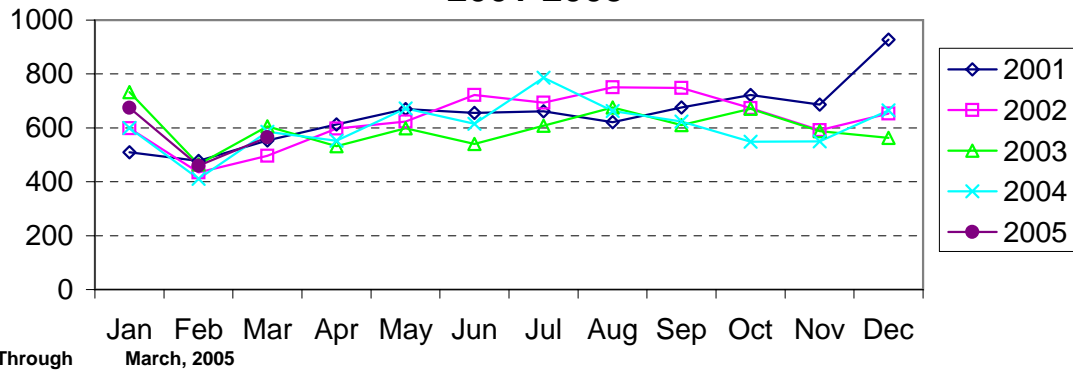


Clearance rates for crime reporting are calculated by dividing the number of crimes cleared during a designated time span by the number of crimes reported in the same period and converting the result to a percentage (multiplying by 100). Since cases from previous reporting periods can be cleared during the designated time span, the rate may be higher than 100%.

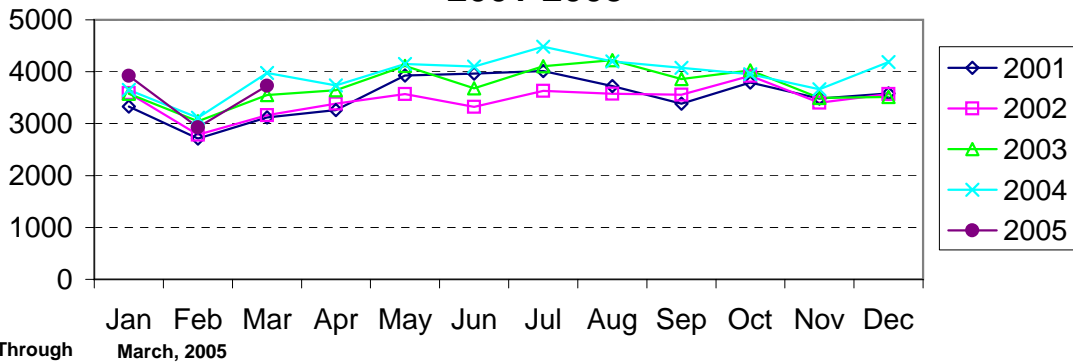
Index Offenses Reported by Month Charlotte-Mecklenburg Police Department: 2001-2005



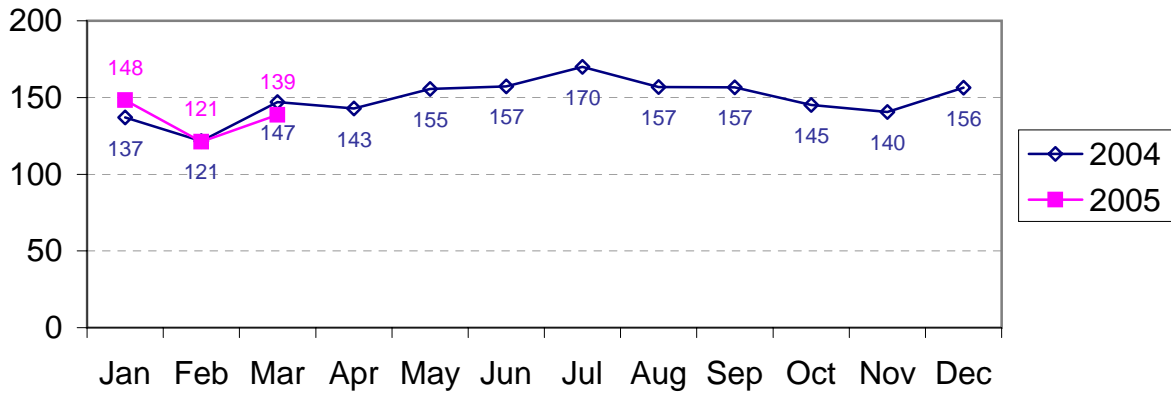
Violent Index Offenses Reported by Month Charlotte-Mecklenburg Police Department: 2001-2005



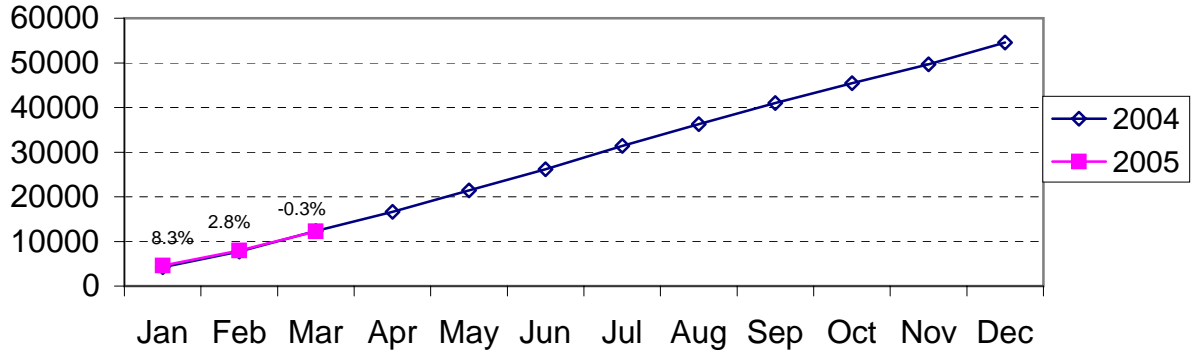
Property Index Offenses Reported by Month Charlotte-Mecklenburg Police Department: 2001-2005



Index Offense Per Day Average by Month Charlotte-Mecklenburg Police Department: 2004-2005

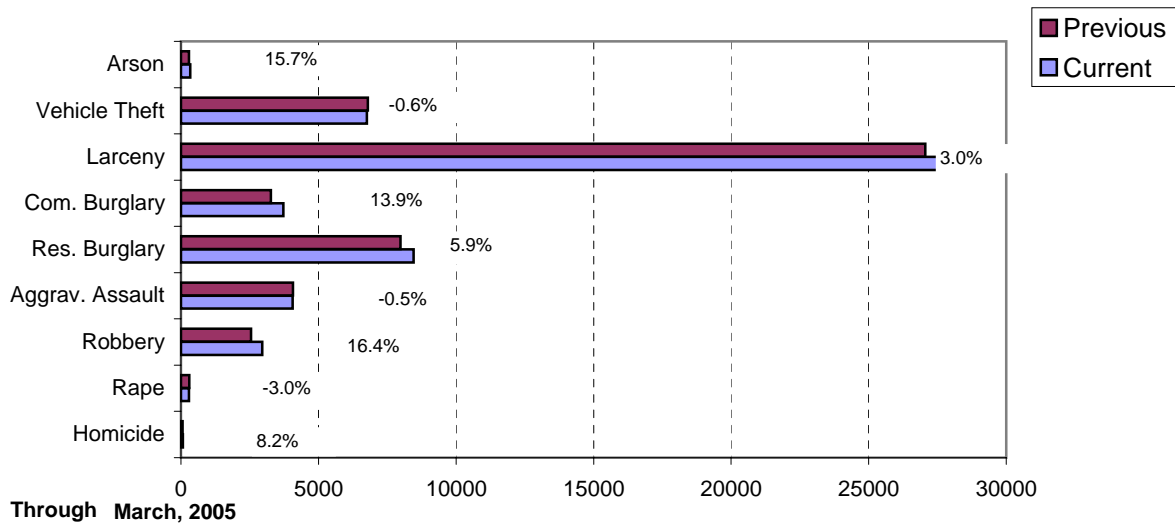


Index Offenses Year-to-Date Cumulative Totals Charlotte-Mecklenburg Police Department: 2004-2005

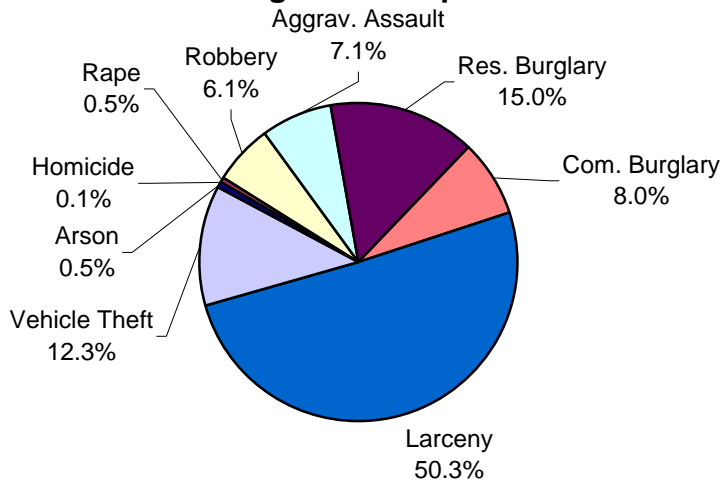


Through March, 2005

Index Offenses in Current and Previous 12 Months Charlotte-Mecklenburg Police Department

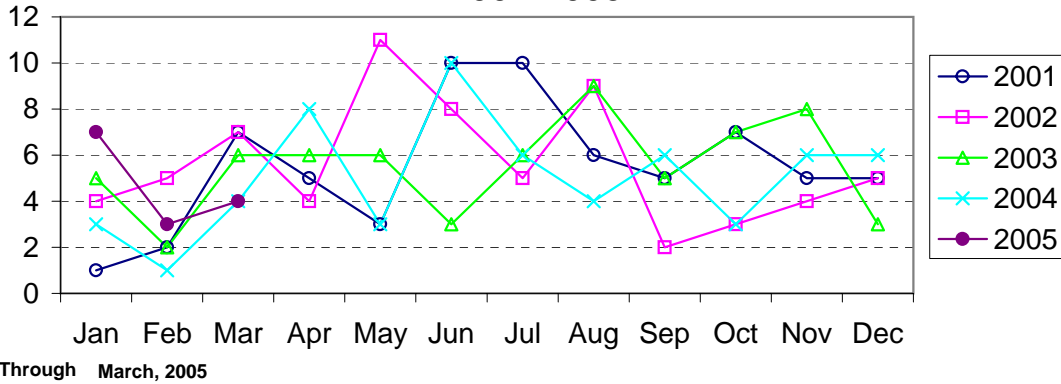


Year-to-Date Index Offenses by Type Charlotte-Mecklenburg Police Department: 2005

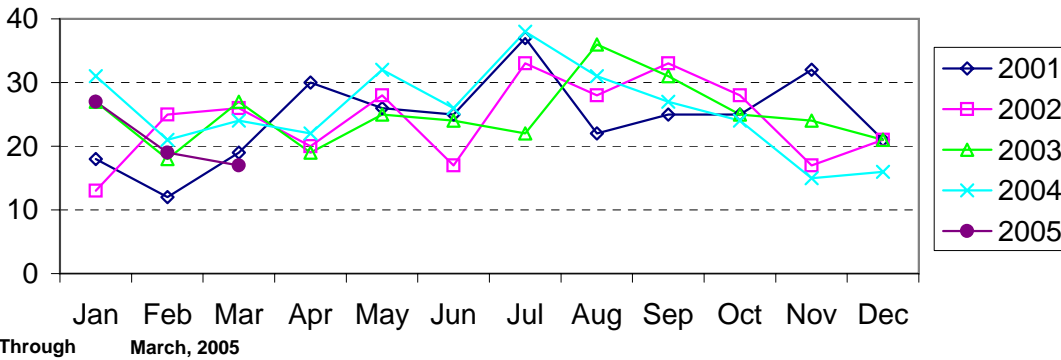


Through March, 2005

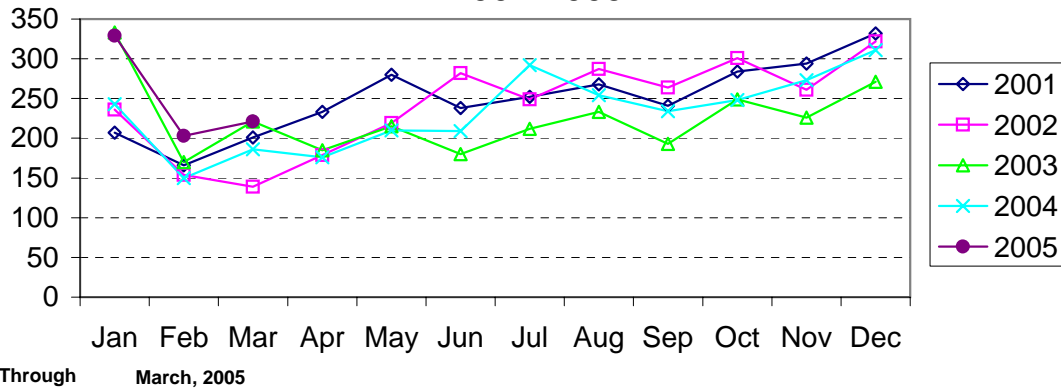
Homicide Reported by Month Charlotte-Mecklenburg Police Department: 2001-2005



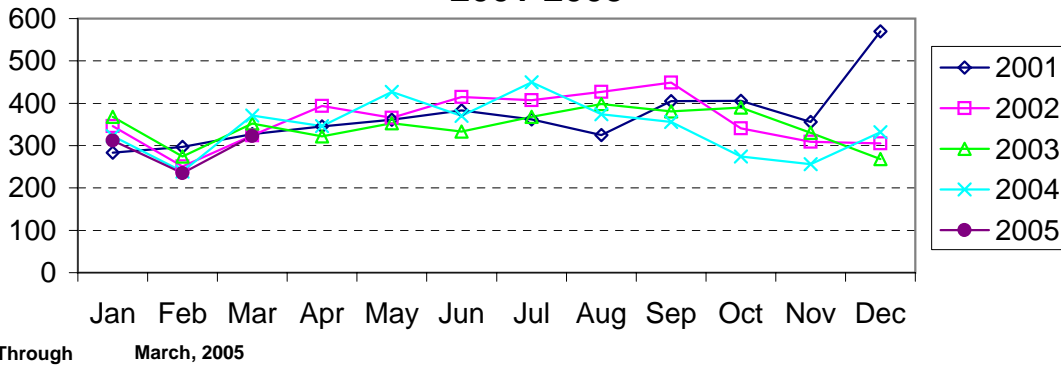
Rape Reported by Month Charlotte-Mecklenburg Police Department: 2001-2005



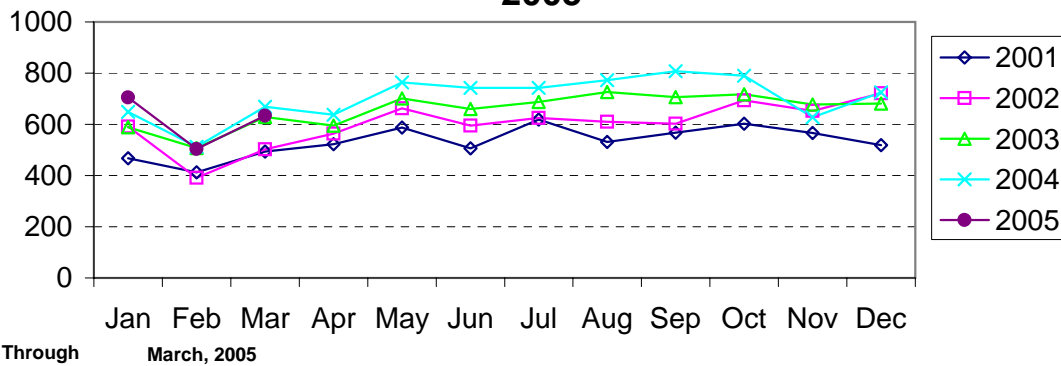
Robbery Reported by Month Charlotte-Mecklenburg Police Department: 2001-2005



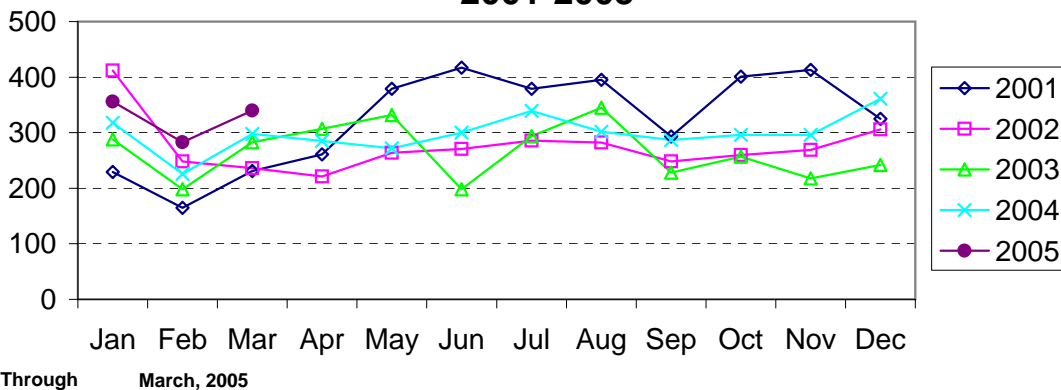
Aggravated Assault Reported by Month Charlotte-Mecklenburg Police Department: 2001-2005



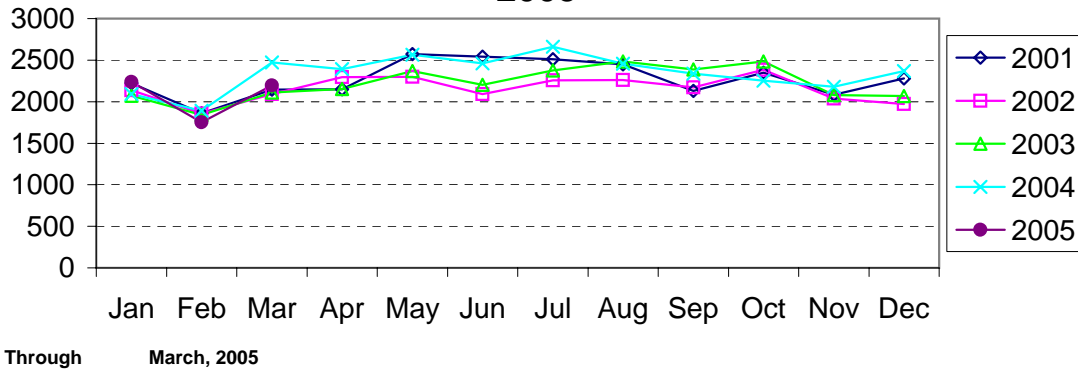
Residential Burglary Reported by Month Charlotte-Mecklenburg Police Department: 2001- 2005



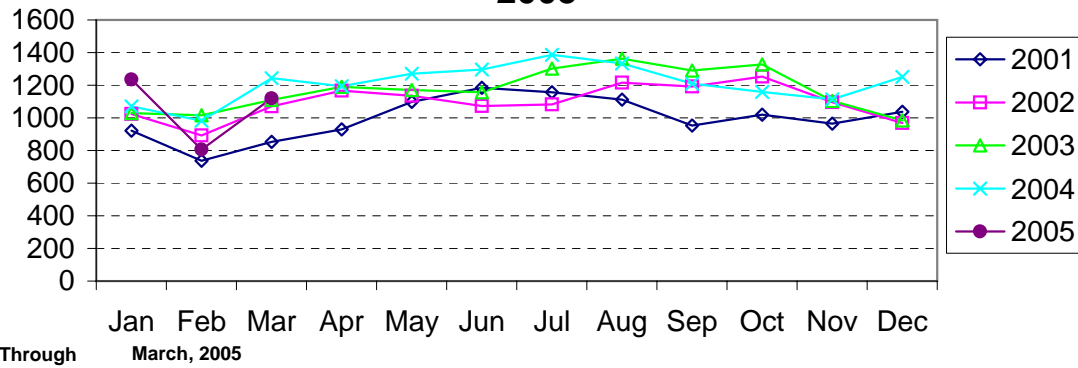
Commercial Burglary Reported by Month Charlotte-Mecklenburg Police Department: 2001-2005



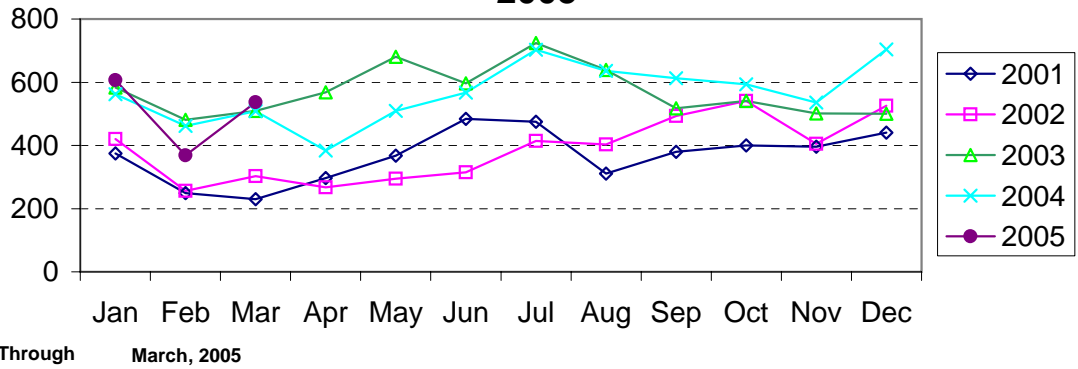
Larceny Reported by Month Charlotte-Mecklenburg Police Department: 2001-2005



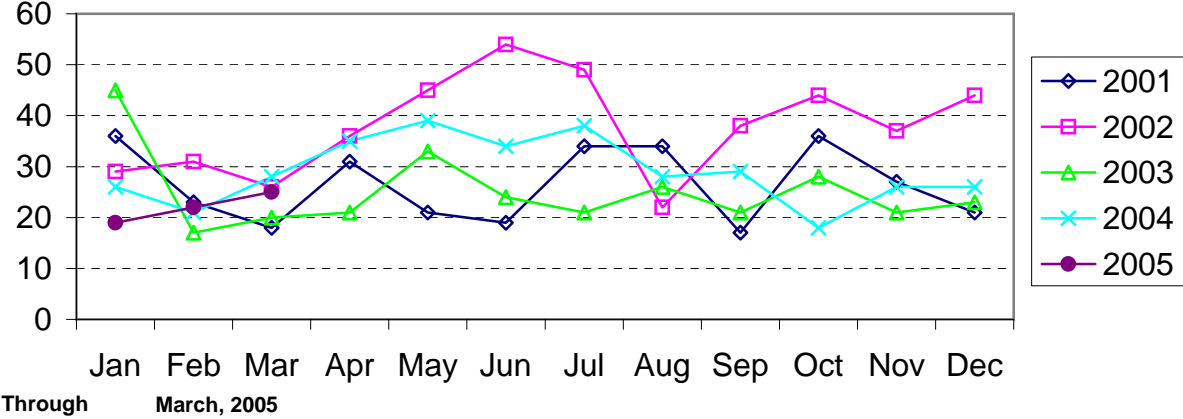
Larceny from Vehicle Reported by Month Charlotte-Mecklenburg Police Department: 2001-2005



Vehicle Theft Reported by Month Charlotte-Mecklenburg Police Department: 2001-2005



Arson Reported by Month Charlotte-Mecklenburg Police Department: 2001-2005



Index Offenses Reported by Division and Service Area of Occurrence									
West Service Area: Jan-Mar, 2004-2005									
INDEX_CATEGORIES	Westover (A2)			Freedom (A3)			West Service Area		
	2004	2005	% Change	2004	2005	% Change	2004	2005	% Change
MURDER & NON-NEGLIGENT MANSLAUGHTER	0	1	NA	0	2	NA	0	3	NA
RAPE	6	5	-16.7%	3	7	133.3%	9	12	33.3%
ACTUAL	6	5	-16.7%	3	7	133.3%	9	12	33.3%
ATTEMPTED	0	0	NA	0	0	NA	0	0	NA
ROBBERY	48	75	56.3%	72	95	31.9%	120	170	41.7%
ARMED	38	59	55.3%	55	88	60.0%	93	147	58.1%
STRONG-ARM	10	16	60.0%	17	7	-58.8%	27	23	-14.8%
AGGRAVATED ASSAULT	61	91	49.2%	99	126	27.3%	160	217	35.6%
BURGLARY	201	220	9.5%	296	375	26.7%	497	595	19.7%
RESIDENTIAL	121	108	-10.7%	209	216	3.3%	330	324	-1.8%
COMMERCIAL	80	112	40.0%	87	159	82.8%	167	271	62.3%
LARCENY	398	400	0.5%	602	559	-7.1%	1000	959	-4.1%
FROM AUTO	191	192	0.5%	287	244	-15.0%	478	436	-8.8%
BICYCLE	4	0	-100.0%	3	3	0.0%	7	3	-57.1%
SHOPLIFTING	52	24	-53.8%	78	56	-28.2%	130	80	-38.5%
OTHERS	151	184	21.9%	234	256	9.4%	385	440	14.3%
VEHICLE THEFT	93	94	1.1%	179	148	-17.3%	272	242	-11.0%
ARSON	9	2	-77.8%	13	4	-69.2%	22	6	-72.7%
TOTALS	816	888	8.8%	1264	1316	4.1%	2080	2204	6.0%
VIOLENT	115	172	49.6%	174	230	32.2%	289	402	39.1%
PROPERTY	701	716	2.1%	1090	1086	-0.4%	1791	1802	0.6%

Index Offenses Reported by Division and Service Area of Occurrence									
Southeast Service Area: Jan-Mar, 2004-2005									
INDEX_CATEGORIES	Providence (B1)			Independence (B3)			Southeast Service Area		
	2004	2005	% Change	2004	2005	% Change	2004	2005	% Change
MURDER & NON-NEGLIGENT MANSLAUGHTER	0	1	NA	1	0	-100.0%	1	1	0.0%
RAPE	6	1	-83.3%	4	9	125.0%	10	10	0.0%
ACTUAL	6	1	-83.3%	4	9	125.0%	10	10	0.0%
ATTEMPTED	0	0	NA	0	0	NA	0	0	NA
ROBBERY	33	27	-18.2%	52	57	9.6%	85	84	-1.2%
ARMED	24	23	-4.2%	39	44	12.8%	63	67	6.3%
STRONG-ARM	9	4	-55.6%	13	13	0.0%	22	17	-22.7%
AGGRAVATED ASSAULT	51	36	-29.4%	78	78	0.0%	129	114	-11.6%
BURGLARY	238	196	-17.6%	272	262	-3.7%	510	458	-10.2%
RESIDENTIAL	127	115	-9.4%	203	214	5.4%	330	329	-0.3%
COMMERCIAL	111	81	-27.0%	69	48	-30.4%	180	129	-28.3%
LARCENY	448	443	-1.1%	551	546	-0.9%	999	989	-1.0%
FROM AUTO	215	185	-14.0%	323	307	-5.0%	538	492	-8.6%
BICYCLE	2	4	100.0%	2	2	0.0%	4	6	50.0%
SHOPLIFTING	39	52	33.3%	44	54	22.7%	83	106	27.7%
OTHERS	192	202	5.2%	182	183	0.5%	374	385	2.9%
VEHICLE THEFT	78	70	-10.3%	175	186	6.3%	253	256	1.2%
ARSON	5	2	-60.0%	8	11	37.5%	13	13	0.0%
TOTALS	859	776	-9.7%	1141	1149	0.7%	2000	1925	-3.8%
VIOLENT	90	65	-27.8%	135	144	6.7%	225	209	-7.1%
PROPERTY	769	711	-7.5%	1006	1005	-0.1%	1775	1716	-3.3%

The data in the district breakdowns does not include a small number of offenses in which the location of the offense was unknown or was entered without a valid tract assignment. Districts are not equal in geographic size, demographics, zoning/development, and other factors that influence the rate of crimes committed in an area. Therefore, the comparison of raw offense totals across districts is not advisable.

Index Offenses Reported by Division and Service Area of Occurrence									
Northeast Service Area: Jan-Mar, 2004-2005									
INDEX_CATEGORIES	North (C1)			Hickory Grove (C3)			Northeast Service Area		
	2004	2005	% Change	2004	2005	% Change	2004	2005	% Change
MURDER & NON-NEGLIGENT MANSLAUGHTER	0	2	NA	1	3	200.0%	1	5	400.0%
RAPE	13	9	-30.8%	6	4	-33.3%	19	13	-31.6%
ACTUAL	12	7	-41.7%	6	3	-50.0%	18	10	-44.4%
ATTEMPTED	1	2	100.0%	0	1	NA	1	3	200.0%
ROBBERY	48	47	-2.1%	56	64	14.3%	104	111	6.7%
ARMED	38	40	5.3%	42	50	19.0%	80	90	12.5%
STRONG-ARM	10	7	-30.0%	14	14	0.0%	24	21	-12.5%
AGGRAVATED ASSAULT	92	77	-16.3%	113	88	-22.1%	205	165	-19.5%
BURGLARY	295	412	39.7%	278	300	7.9%	573	712	24.3%
RESIDENTIAL	212	298	40.6%	198	216	9.1%	410	514	25.4%
COMMERCIAL	83	114	37.3%	80	84	5.0%	163	198	21.5%
LARCENY	975	963	-1.2%	489	423	-13.5%	1464	1386	-5.3%
FROM AUTO	566	527	-6.9%	246	219	-11.0%	812	746	-8.1%
BICYCLE	7	4	-42.9%	7	3	-57.1%	14	7	-50.0%
SHOPLIFTING	93	93	0.0%	38	35	-7.9%	131	128	-2.3%
OTHERS	309	339	9.7%	198	166	-16.2%	507	505	-0.4%
VEHICLE THEFT	175	220	25.7%	153	194	26.8%	328	414	26.2%
ARSON	5	12	140.0%	6	8	33.3%	11	20	81.8%
TOTALS	1603	1742	8.7%	1102	1084	-1.6%	2705	2826	4.5%
VIOLENT PROPERTY	153 1450	135 1607	-11.8% 10.8%	176 926	159 925	-9.7% -0.1%	329 2376	294 2532	-10.6% 6.6%

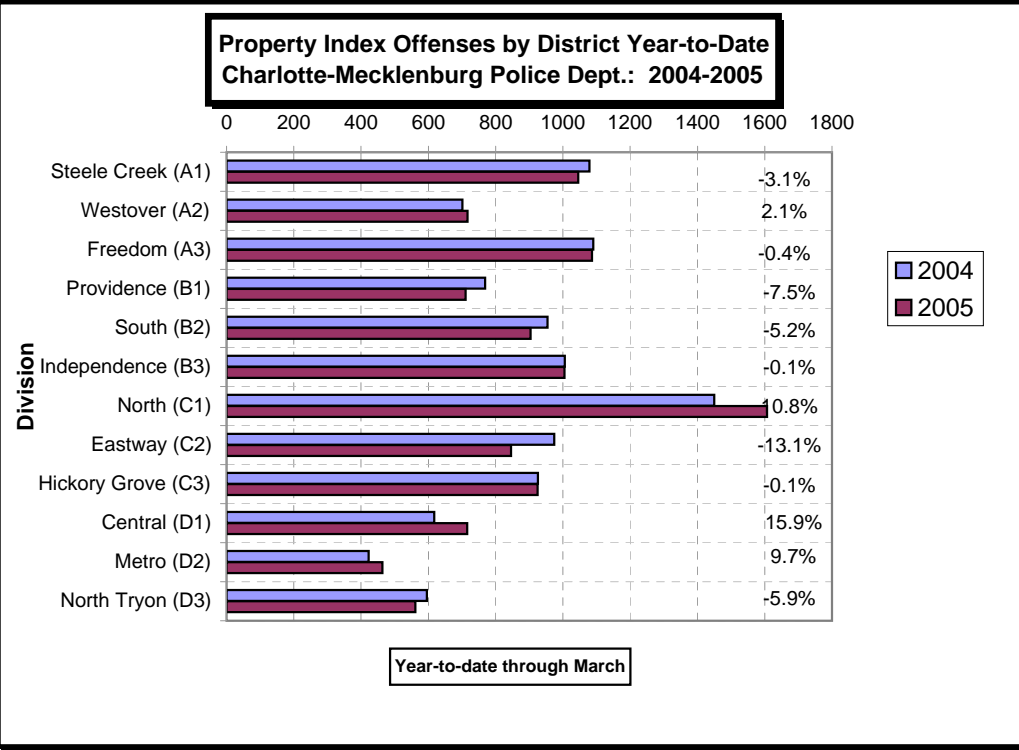
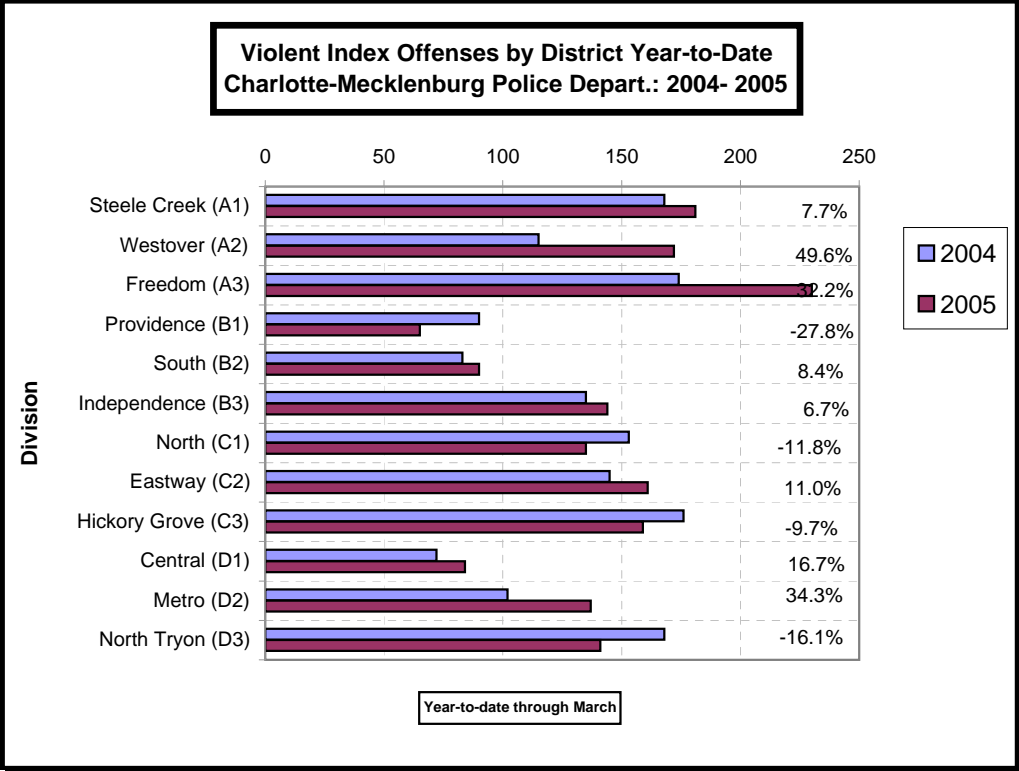
Index Offenses Reported by Division and Service Area of Occurrence									
Central Service Area: Jan-Mar, 2004-2005									
INDEX_CATEGORIES	Central (D1)			Metro (D2)			Central Service Area		
	2004	2005	% Change	2004	2005	% Change	2004	2005	% Change
MURDER & NON-NEGLIGENT MANSLAUGHTER	0	0	NA	0	3	NA	0	3	NA
RAPE	4	7	75.0%	9	2	-77.8%	13	9	-30.8%
ACTUAL	3	6	100.0%	9	3	-66.7%	12	9	-25.0%
ATTEMPTED	1	1	0.0%	0	-1	NA	1	0	-100.0%
ROBBERY	31	46	48.4%	37	49	32.4%	68	95	39.7%
ARMED	17	26	52.9%	32	38	18.8%	49	64	30.6%
STRONG-ARM	14	20	42.9%	5	11	120.0%	19	31	63.2%
AGGRAVATED ASSAULT	37	31	-16.2%	56	83	48.2%	93	114	22.6%
BURGLARY	88	100	13.6%	120	161	34.2%	208	261	25.5%
RESIDENTIAL	33	33	0.0%	90	131	45.6%	123	164	33.3%
COMMERCIAL	55	67	21.8%	30	30	0.0%	85	97	14.1%
LARCENY	455	550	20.9%	225	219	-2.7%	680	769	13.1%
FROM AUTO	242	309	27.7%	95	98	3.2%	337	407	20.8%
BICYCLE	3	3	0.0%	1	2	100.0%	4	5	25.0%
SHOPLIFTING	17	12	-29.4%	19	9	-52.6%	36	21	-41.7%
OTHERS	193	226	17.1%	110	110	0.0%	303	336	10.9%
VEHICLE THEFT	73	65	-11.0%	73	79	8.2%	146	144	-1.4%
ARSON	1	0	-100.0%	4	4	0.0%	5	4	-20.0%
TOTALS	689	799	16.0%	524	600	14.5%	1213	1399	15.3%
VIOLENT PROPERTY	72 617	84 715	16.7% 15.9%	102 422	137 463	34.3% 9.7%	174 1039	221 1178	27.0% 13.4%

The data in the district breakdowns does not include a small number of offenses in which the location of the offense was unknown or was entered without a valid tract assignment. Districts are not equal in geographic size, demographics, zoning/development, and other factors that influence the rate of crimes committed in an area. Therefore, the comparison of raw offense totals across districts is not advisable.

Index Offenses Reported by Division and Service Area of Occurrence									
East Service Area: Jan-Mar, 2004-2005									
INDEX_CATEGORIES	Eastway (C2)			North Tryon (D3)			East Service Area		
	2004	2005	% Change	2004	2005	% Change	2004	2005	% Change
MURDER & NON-NEGLIGENT MANSLAUGHTER	1	2	100.0%	2	0	-100.0%	3	2	-33.3%
RAPE	2	6	200.0%	7	5	-28.6%	9	11	22.2%
ACTUAL	2	6	200.0%	6	5	-16.7%	8	11	37.5%
ATTEMPTED	0	0	NA	1	0	-100.0%	1	0	-100.0%
ROBBERY	64	97	51.6%	54	70	29.6%	118	167	41.5%
ARMED	41	71	73.2%	40	60	50.0%	81	131	61.7%
STRONG-ARM	23	26	13.0%	14	10	-28.6%	37	36	-2.7%
AGGRAVATED ASSAULT	78	56	-28.2%	105	66	-37.1%	183	122	-33.3%
BURGLARY	254	216	-15.0%	166	174	4.8%	420	390	-7.1%
RESIDENTIAL	161	151	-6.2%	119	112	-5.9%	280	263	-6.1%
COMMERCIAL	93	65	-30.1%	47	62	31.9%	140	127	-9.3%
LARCENY	580	515	-11.2%	316	301	-4.7%	896	816	-8.9%
FROM AUTO	224	183	-18.3%	160	157	-1.9%	384	340	-11.5%
BICYCLE	3	2	-33.3%	3	2	-33.3%	6	4	-33.3%
SHOPLIFTING	158	147	-7.0%	22	17	-22.7%	180	164	-8.9%
OTHERS	195	183	-6.2%	131	125	-4.6%	326	308	-5.5%
VEHICLE THEFT	135	108	-20.0%	112	83	-25.9%	247	191	-22.7%
ARSON	5	7	40.0%	2	3	50.0%	7	10	42.9%
TOTALS	1119	1007	-10.0%	764	702	-8.1%	1883	1709	-9.2%
VIOLENT PROPERTY	145 974	161 846	11.0% -13.1%	168 596	141 561	-16.1% -5.9%	313 1570	302 1407	-3.5% -10.4%

Index Offenses Reported by Division and Service Area of Occurrence									
South Service Area: Jan-Mar, 2004-2005									
INDEX_CATEGORIES	Steele Creek (A1)			South (B2)			South Service Area		
	2004	2005	% Change	2004	2005	% Change	2004	2005	% Change
MURDER & NON-NEGLIGENT MANSLAUGHTER	3	0	-100.0%	0	0	NA	3	0	-100.0%
RAPE	8	5	-37.5%	7	2	-71.4%	15	7	-53.3%
ACTUAL	7	5	-28.6%	7	2	-71.4%	14	7	-50.0%
ATTEMPTED	1	0	-100.0%	0	0	NA	1	0	-100.0%
ROBBERY	47	81	72.3%	33	45	36.4%	80	126	57.5%
ARMED	38	67	76.3%	24	37	54.2%	62	104	67.7%
STRONG-ARM	9	14	55.6%	9	8	-11.1%	18	22	22.2%
AGGRAVATED ASSAULT	110	95	-13.6%	43	43	0.0%	153	138	-9.8%
BURGLARY	222	206	-7.2%	210	199	-5.2%	432	405	-6.3%
RESIDENTIAL	172	115	-33.1%	169	133	-21.3%	341	248	-27.3%
COMMERCIAL	50	91	82.0%	41	66	61.0%	91	157	72.5%
LARCENY	684	665	-2.8%	642	602	-6.2%	1326	1267	-4.4%
FROM AUTO	344	369	7.3%	356	370	3.9%	700	739	5.6%
BICYCLE	5	2	-60.0%	0	2	NA	5	4	-20.0%
SHOPLIFTING	123	54	-56.1%	36	37	2.8%	159	91	-42.8%
OTHERS	212	240	13.2%	250	193	-22.8%	462	433	-6.3%
VEHICLE THEFT	164	168	2.4%	95	97	2.1%	259	265	2.3%
ARSON	9	7	-22.2%	7	6	-14.3%	16	13	-18.8%
TOTALS	1247	1227	-1.6%	1037	994	-4.1%	2284	2221	-2.8%
VIOLENT PROPERTY	168 1079	181 1046	7.7% -3.1%	83 954	90 904	8.4% -5.2%	251 2033	271 1950	8.0% -4.1%

The data in the district breakdowns does not include a small number of offenses in which the location of the offense was unknown or was entered without a valid tract assignment. Districts are not equal in geographic size, demographics, zoning/development, and other factors that influence the rate of crimes committed in an area. Therefore, the comparison of raw offense totals across districts is not advisable.



The data in the district breakdowns does not include a small number of offenses in which the location of the offense was unknown or was entered without a valid tract assignment in 2004. Districts are not equal in geographic size, demographics, zoning/development, and other factors that influence the rate of crimes committed in an area. Therefore, the comparison of raw offense totals across districts is not advisable.

Arrests by Charlotte-Mecklenburg Police Department
Year-To-Date: 2004-2005
(Through March)

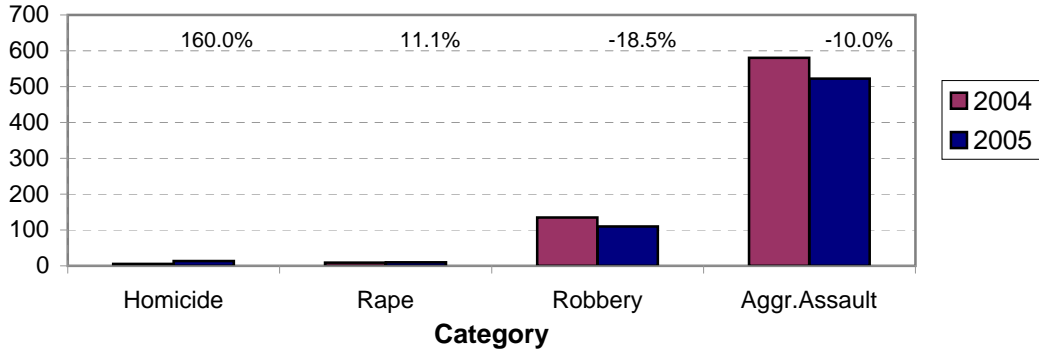
CATEGORY	ADULTS (AGE 18 & OLDER):			JUVENILES (UNDER 18):			TOTAL ARRESTS:		
	2004 Y-T-D	2005 Y-T-D	% CHANGE	2004 Y-T-D	2005 Y-T-D	% CHANGE	2004 Y-T-D	2005 Y-T-D	% CHANGE
Murder/Non-Negligent Manslaughter	5	12	140.0%	0	1	NA	5	13	160.0%
Negligent & Vehicular Manslaughter	3	2	-33.3%	0	0	NA	3	2	-33.3%
Rape	8	10	25.0%	1	0	-100.0%	9	10	11.1%
Robbery	90	81	-10.0%	45	29	-35.6%	135	110	-18.5%
Aggravated Assault	478	451	-5.6%	102	71	-30.4%	580	522	-10.0%
Burglary	142	169	19.0%	39	60	53.8%	181	229	26.5%
Larceny	372	375	0.8%	161	121	-24.8%	533	496	-6.9%
Vehicle Theft	23	26	13.0%	51	14	-72.5%	74	40	-45.9%
Non-Aggravated Assault	430	442	2.8%	239	211	-11.7%	669	653	-2.4%
Arson	3	1	-66.7%	6	4	-33.3%	9	5	-44.4%
Forgery/Counterfiet	28	42	50.0%	2	2	0.0%	30	44	46.7%
Fraud	145	126	-13.1%	1	0	-100.0%	146	126	-13.7%
Embezzlement	20	19	-5.0%	2	1	-50.0%	22	20	-9.1%
Stolen Property	121	105	-13.2%	26	23	-11.5%	147	128	-12.9%
Vandalism	65	47	-27.7%	48	50	4.2%	113	97	-14.2%
Weapons	107	137	28.0%	16	25	56.3%	123	162	31.7%
Prostitution	59	48	-18.6%	4	0	-100.0%	63	48	-23.8%
Sex Offenses	40	43	7.5%	3	1	-66.7%	43	44	2.3%
Drugs	675	679	0.6%	73	68	-6.8%	748	747	-0.1%
Gambling	4	1	-75.0%	0	0	NA	4	1	-75.0%
Offenses vs. Family	1	4	300.0%	1	0	-100.0%	2	4	100.0%
DUI	466	509	9.2%	3	3	0.0%	469	512	9.2%
Liquor	53	28	-47.2%	1	3	200.0%	54	31	-42.6%
Disorder.Conduct	128	122	-4.7%	101	105	4.0%	229	227	-0.9%
Other Non-Traffic	1869	1945	4.1%	202	212	5.0%	2071	2157	4.2%
VIOLENT INDEX¹	581	554	-4.6%	148	101	-31.8%	729	655	-10.2%
PROPERTY INDEX²	540	571	5.7%	257	199	-22.6%	797	770	-3.4%
INDEX SUBTOTAL	1121	1125	0.4%	405	300	-25.9%	1526	1425	-6.6%
PART 2 SUBTOTAL³	4214	4299	2.0%	722	704	-2.5%	4936	5003	1.4%
TOTAL	5335	5424	1.7%	1127	1004	-10.9%	6462	6428	-0.5%

¹Violent Index includes murder and non-negligent manslaughter, rape, robbery, and aggravated assault.

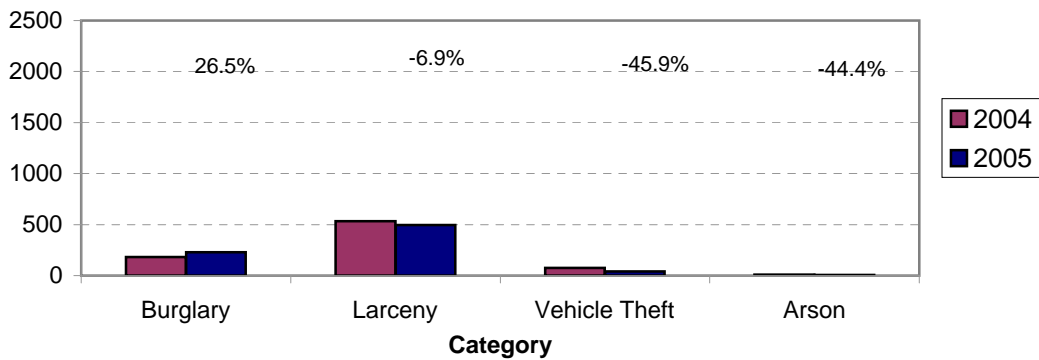
²Property Index includes burglary, larceny, vehicle theft, and arson.

³Part 2 crimes include non-traffic crimes not counted in the Index totals.

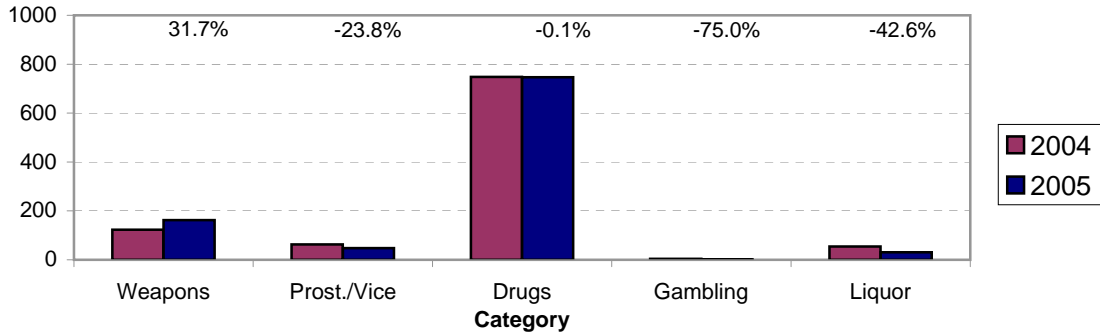
**Violent Index Arrests Year-to-Date
Charlotte-Mecklenburg Police Department: 2004-2005
(Through March)**



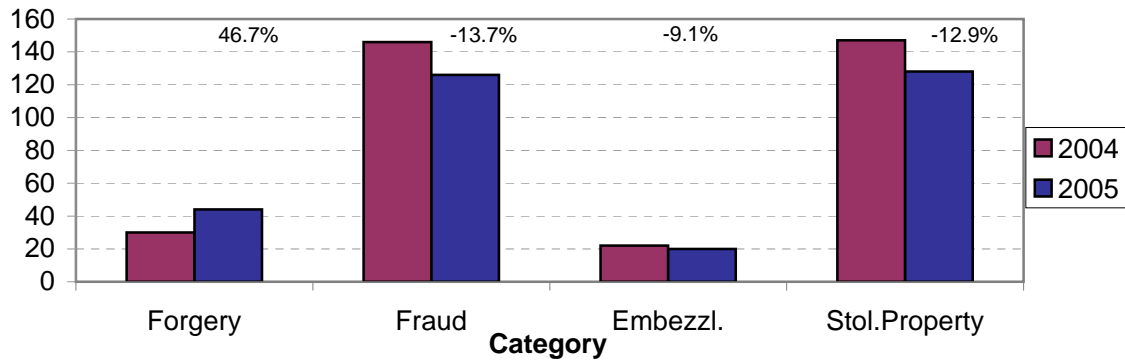
**Property Index Arrests Year-to-Date
Charlotte-Mecklenburg Police Department: 2004-2005
(Through March)**



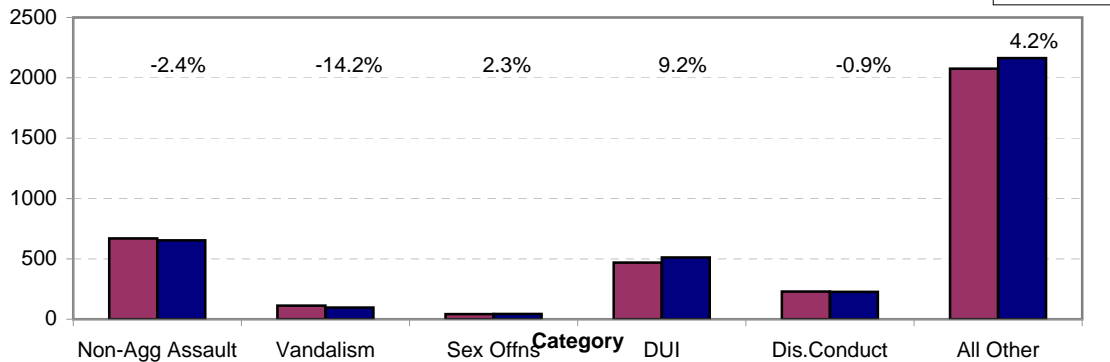
**Arrests for Vice/CCW/Drugs/Etc. Year-to-Date
Charlotte-Mecklenburg Police Department: 2004 - 2005
(Through March)**



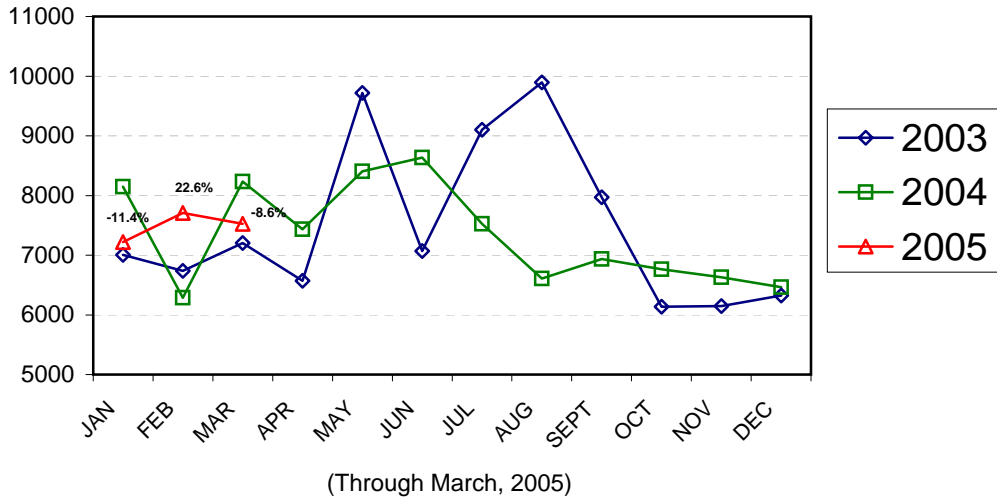
**Arrests for Property/White Collar Crime Year-to-Date
Charlotte-Mecklenburg Police Department: 2004- 2005
(Through March)**



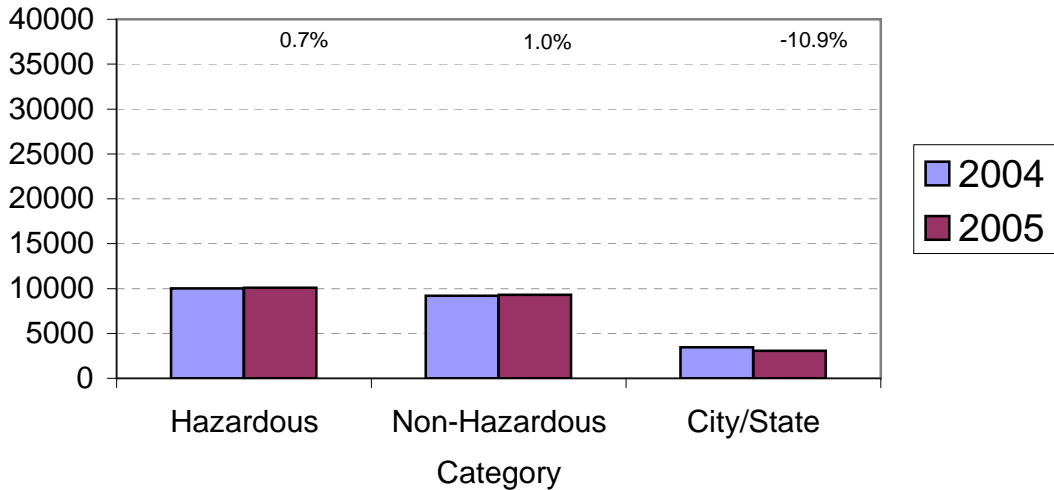
**Arrests for Other Categories Year-to-Date
Charlotte-Mecklenburg Police Department: 2004 - 2005
(Through March)**



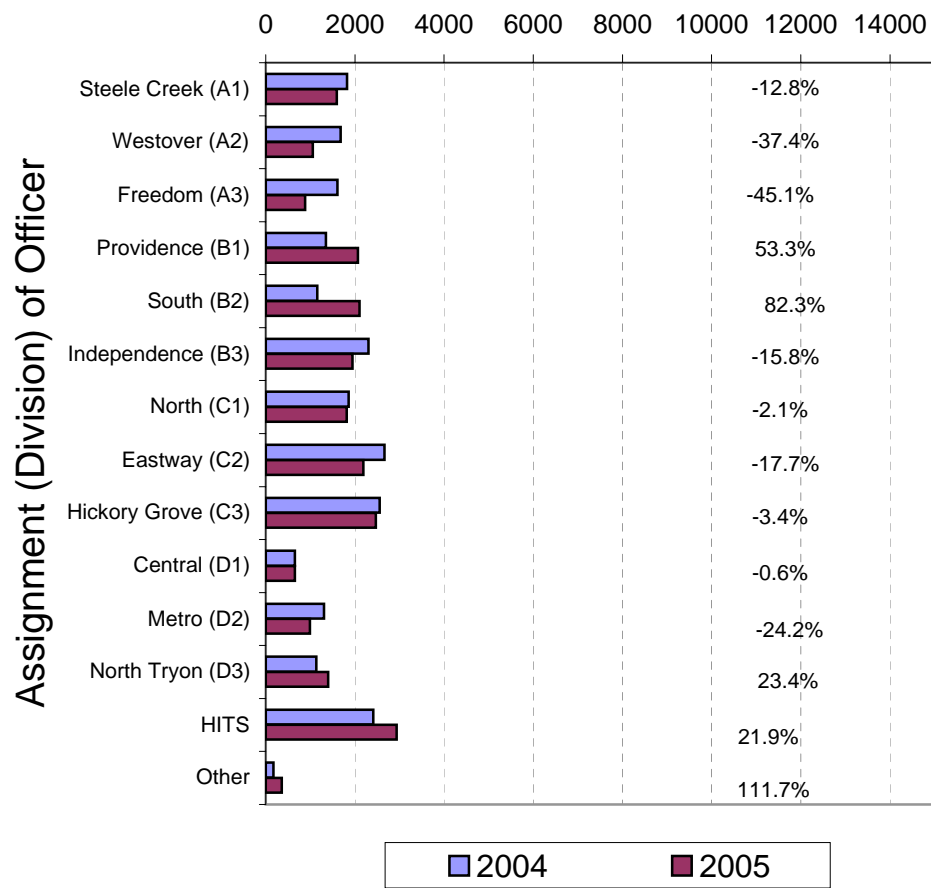
**Total Citation Enforcement by Month
Charlotte-Mecklenburg Police Dept.: 2003-2005**



**CMPD Citation Enforcement by Category
Year-to-Date, 2004 - 2005
(Through March, 2005)**



**Citations Issued Year-to-Date by CMPD Divisions
2004 - 2005
(Through March, 2005)**

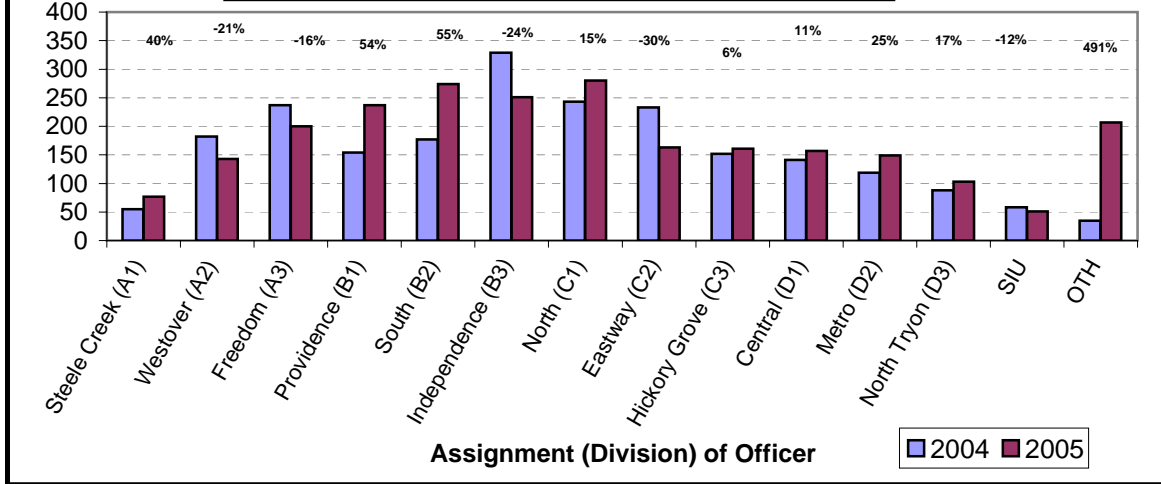


Note: 2003 and 2004 data for HITS and Other was adjusted in April, 2004.

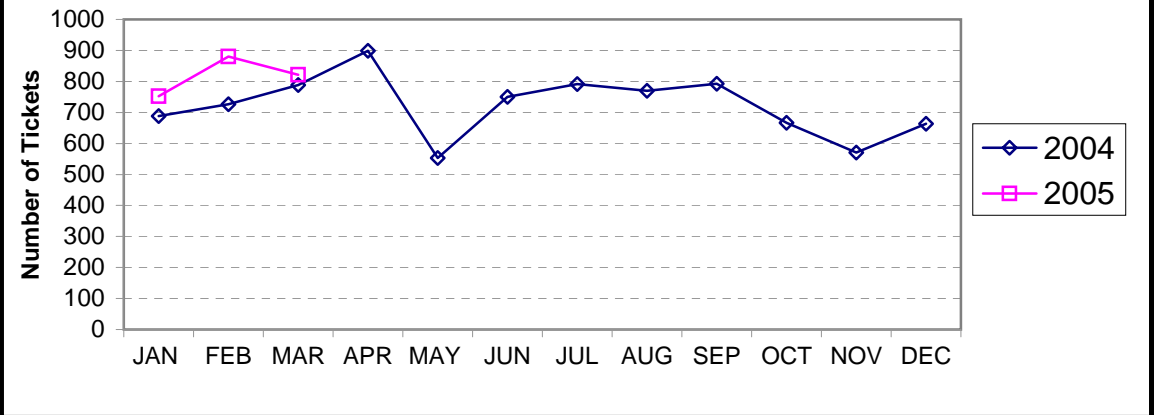
Citations Issued by the Charlotte Mecklenburg Police Officers Year-to-Date (Through March, 2005)			
Total Citations	2004	2005	% Change
Hazardous	10,020	10,088	0.7%
Non-Hazardous	9,199	9,294	1.0%
Other City/State Statute/Ordinance	3,446	3,070	-10.9%
Total	22,665	22,452	-0.9%

"Safe Speed" Program: 2005 (Through March, 2005)	
Total Citations	9163
(Citations issued through the "Safe Speed" program are not included in the CMPD citation totals used in the summary chart above or in the other citation charts.)	

**Warning Tickets Issued by CMPD Division
Year-to-Date, 2004 - 2005
Through March, 2005**



**Total Warning Tickets Issued by CMPD
By Month: 2004 - 2005**



**Warning Tickets Issued by CMPD Year-to-Date
Through March, 2005**

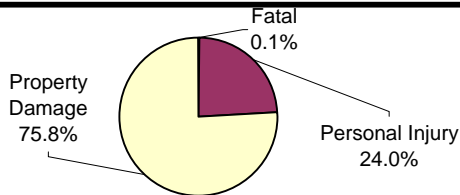
	2004	2005	% Change
Total Warning Tickets	2203	2453	11.3%

**Traffic Collison Reports
Charlotte-Mecklenburg Police Department
Year-to-Date: 2004-2005
(Through March)**

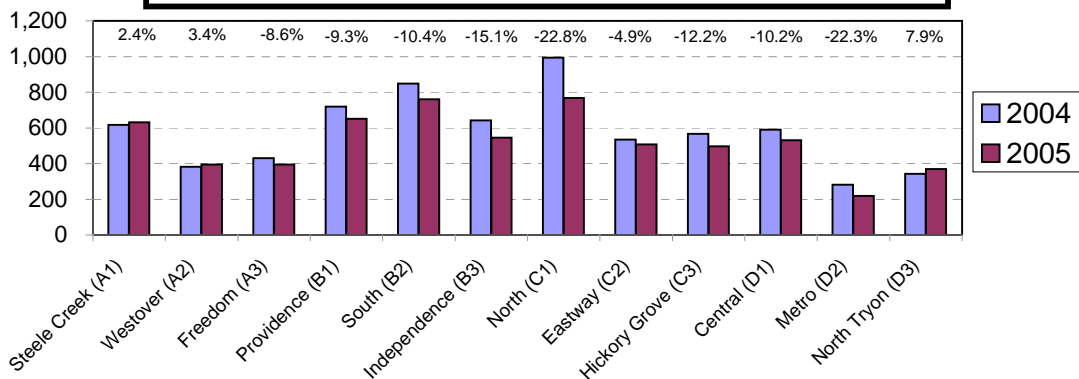
<u>Type</u>	<u>2004</u>	<u>2005</u>	<u>% Change</u>
Fatal Collisions	7	9	28.6%
Vehicle Occupants Killed	6	8	33.3%
Pedestrians Killed	1	2	100.0%
Personal Injury Collisions	1694	1504	-11.1%
Property Damage Collisions	5276	4779	-9.4%
Total Collisions	6977	6292	-9.8%

* The number of fatal collisions and the number of persons killed (fatalities) in those incidents is taken from the HITS file. Their records are updated for deaths that occur after the initial report is filed.

**Traffic Collisions Reported by Type
Charlotte-Mecklenburg Police Department:
2005 Year-to-Date
(Through March)**



**Traffic Collisions Reported by Charlotte-Mecklenburg Police Dept.
Year-to-Date By Location (Division) : 2004 -2005
(Through March)**



Uniform Crime Reporting Procedures:

The Charlotte-Mecklenburg Police Department reports offense and arrest statistics in accordance with standard Uniform Crime Reporting (UCR) guidelines. UCR policy states that any adjustments to previous months can be made on the current month's report:

...In tabulating crime counts, an agency may find that offense totals for past months require adjustments due to developments in the investigation or other handling of the matter. It may be necessary to adjust totals reported to UCR for the past month or prior months. Needed adjustments can be made on the current month's report and do not affect the reliability of the figures in that such adjustments tend to equalize each other from month to month over a period of time.

- *Uniform Crime Reporting Handbook*, FBI, 1984, p. 42-43

We are required to report crime monthly to the UCR program, and we do therefore make an effort to process monthly changes in a timely manner. However, occasionally due to the review and processing required for reclassifying, unfounding or clearing cases, the current month's totals may reflect the processing of a backlog of these changes from previous months.

Users of the data are cautioned that conclusions about substantial changes in crime trends or in clearance rates based on only a single month's data or trend may reflect some of these adjustments. For this reason, in addition to the monthly and year-to-date trends on Page 1, the monthly report routinely includes a comparison for the previous 12 months (p. 4), as well as graphs that provide seasonal/monthly comparisons over a five-year period (p. 5-8).

This report was compiled by the Research, Planning, and Analysis Division with the assistance of volunteer Doris Bowen.

We make an effort to present the most accurate information available at the time this report is published. Please notify the Research, Planning, and Analysis office if you have any questions about the data in this report or about an error that was missed in proofing the report.

The division names adopted in 2003 are used in this report; the old district designations is shown in parentheses.