



**CHARLOTTE-MECKLENBURG POLICE DEPARTMENT
MONTHLY SUMMARY REPORT
JANUARY-FEBRUARY, 2004**

**Darrel Stephens
Chief of Police**

INDEX OFFENSES REPORTED TO CHARLOTTE-MECKLENBURG POLICE DEPARTMENT

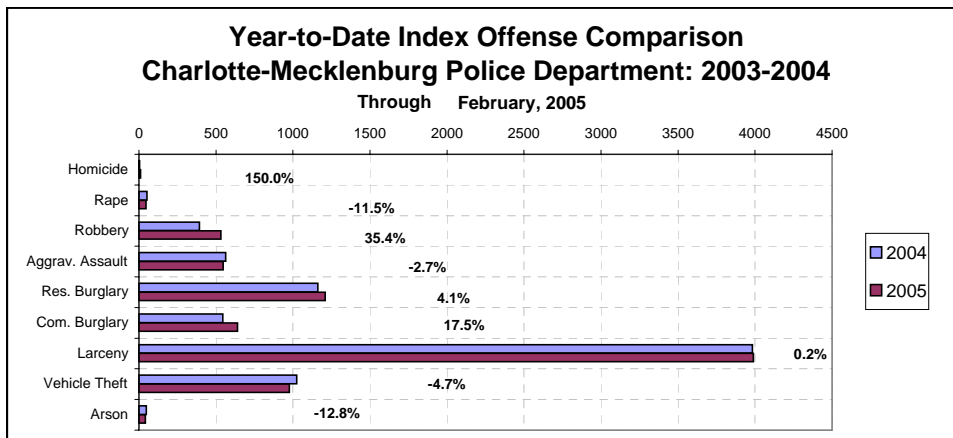
February, 2005 INDEX OFFENSES	# THIS MONTH	% OF ALL INDEX	# LAST MONTH	MONTHLY % CHANGE	SAME MONTH LAST YEAR	MONTHLY % CHANGE	THIS YEAR TO DATE	LAST YEAR TO DATE	ANNUAL % CHANGE
HOMICIDE (MURDER & NON-NEGLIGENT MANSLAUGHTER)	3	0.1%	7	-57.1%	1	200.0%	10	4	150.0%
RAPE TOTAL	19	0.6%	27	-29.6%	21	-9.5%	46	52	-11.5%
ACTUAL	19	0.6%	26	-26.9%	19	0.0%	45	48	-6.3%
ATTEMPT	0	0.0%	1	-100.0%	2	-100.0%	1	4	-75.0%
ROBBERY TOTAL	203	6.0%	329	-38.3%	150	35.3%	532	393	35.4%
ARMED	162	4.8%	263	-38.4%	111	45.9%	425	301	41.2%
STRONG-ARM	41	1.2%	66	-37.9%	39	5.1%	107	92	16.3%
AGGRAVATED ASSAULT TOTAL	235	6.9%	312	-24.7%	239	-1.7%	547	562	-2.7%
BURGLARY TOTAL	787	23.2%	1061	-25.8%	738	6.6%	1848	1705	8.4%
RESIDENTIAL	504	14.9%	705	-28.5%	512	-1.6%	1209	1161	4.1%
COMMERCIAL	283	8.3%	356	-20.5%	226	25.2%	639	544	17.5%

FORCE	659	19.4%	857	-23.1%	556	18.5%	1516	1339	13.2%
NO FORCE	76	2.2%	126	-39.7%	122	-37.7%	202	245	-17.6%
ATTEMPT	52	1.5%	78	-33.3%	60	-13.3%	130	121	7.4%
LARCENY TOTAL	1752	51.7%	2237	-21.7%	1891	-7.4%	3989	3983	0.2%
\$200 AND OVER	833	24.6%	1100	-24.3%	923	-9.8%	1933	1934	-0.1%
\$50 TO \$200	382	11.3%	425	-10.1%	343	11.4%	807	723	11.6%
UNDER \$50	537	15.8%	712	-24.6%	625	-14.1%	1249	1326	-5.8%

FROM AUTO	805	23.7%	1236	-34.9%	982	-18.0%	2041	2052	-0.5%
BICYCLE	8	0.2%	11	-27.3%	2	300.0%	19	20	-5.0%
SHOPLIFTING	181	5.3%	185	-2.2%	181	0.0%	366	426	-14.1%
OTHERS	758	22.4%	805	-5.8%	726	4.4%	1563	1485	5.3%
VEHICLE THEFT TOTAL	369	10.9%	607	-39.2%	462	-20.1%	976	1024	-4.7%
ARSON TOTAL	22	0.6%	19	15.8%	21	4.8%	41	47	-12.8%
TOTALS	3390	100.0%	4599	-26.3%	3523	-3.8%	7989	7770	2.8%
VIOLENT PROPERTY	460	13.6%	675	-31.9%	411	11.9%	1135	1011	12.3%
PROPERTY	2930	86.4%	3924	-25.3%	3112	-5.8%	6854	6759	1.4%

NOTE: Internal robbery breakdowns by armed and strong-arm in October reflect the late reclassification of some cases from previous months from armed robbery to strong-arm robbery.

NOTE: These totals include offenses reported to the Charlotte-Mecklenburg Police Department in accordance with the Uniform Crime Reporting Program. Totals for homicide do not include cases investigated by the police but classed by UCR guidelines as negligent manslaughter or as "justifiable homicide."

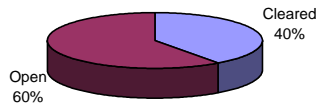


INDEX CLEARANCES REPORTED BY THE CHARLOTTE-MECKLENBURG POLICE DEPARTMENT

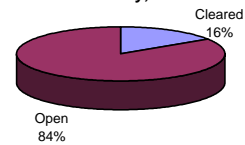
February, 2005 INDEX CLEARANCES	THIS MONTH:		LAST MONTH:		SAME MO. LAST YR:		THIS YEAR TO DATE:		LAST YEAR TO DATE:	
	NO.	%	NO.	%	NO.	%	NO.	%	NO.	%
MURDER & NON-NEGLIGENT MANSLAUGHTER	4	133.3%	2	28.6%	0	0.0%	6	60.0%	1	25.0%
RAPE TOTAL	26	136.8%	24	88.9%	4	19.0%	50	108.7%	34	65.4%
ACTUAL	21	110.5%	21	80.8%	4	21.1%	42	93.3%	32	66.7%
ATTEMPT	5	#DIV/0!	3	300.0%	0	0.0%	8	800.0%	2	50.0%
ROBBERY TOTAL	40	19.7%	70	21.3%	24	16.0%	110	20.7%	121	30.8%
ARMED	28	17.3%	59	22.4%	11	9.9%	87	20.5%	83	27.6%
STRONG-ARM	12	29.3%	11	16.7%	13	33.3%	23	21.5%	38	41.3%
AGGRAVATED ASSAULT TOTAL	129	54.9%	160	51.3%	105	43.9%	289	52.8%	318	56.6%
BURGLARY TOTAL	128	16.3%	152	14.3%	58	7.9%	280	15.2%	216	12.7%
RESIDENTIAL	110	21.8%	120	17.0%	45	8.8%	230	19.0%	171	14.7%
COMMERCIAL	18	6.4%	32	9.0%	13	5.8%	50	7.8%	45	8.3%
LARCENY TOTAL	308	17.6%	327	14.6%	171	9.0%	635	15.9%	572	14.4%
FROM AUTO	62	7.7%	35	2.8%	24	2.4%	97	4.8%	63	3.1%
BICYCLE	2	25.0%	2	18.2%	0	0.0%	4	21.1%	3	15.0%
SHOPLIFTING	125	69.1%	130	70.3%	85	47.0%	255	69.7%	221	51.9%
OTHERS	119	15.7%	160	19.9%	62	8.5%	279	17.9%	285	19.2%
VEHICLE THEFT TOTAL	70	19.0%	91	15.0%	90	19.5%	161	16.5%	197	19.2%
ARSON TOTAL	1	4.5%	7	36.8%	5	23.8%	8	19.5%	14	29.8%
TOTALS	706	20.8%	833	18.1%	457	13.0%	1539	19.3%	1473	19.0%
VIOLENT PROPERTY	199	43.3%	256	37.9%	133	32.4%	455	40.1%	474	46.9%
	507	17.3%	577	14.7%	324	10.4%	1084	15.8%	999	14.8%

NOTE: Clearances are reported in accordance with Uniform Crime Report guidelines. Since clearances are not counted until they are entered until they are entered into the Records system, any delays in processing may result in some clearances being reported in succeeding months. The significant increase in clearances in Nov., 2003, was the result of the entry of clearances from 2002 and 2003 that were processed in the Case Management system but were not entered in the mainframe Records system until that month.

**Year-to-Date Violent Index Clearance Rate
Charlotte-Mecklenburg Police Department: 2004
February, 2005**

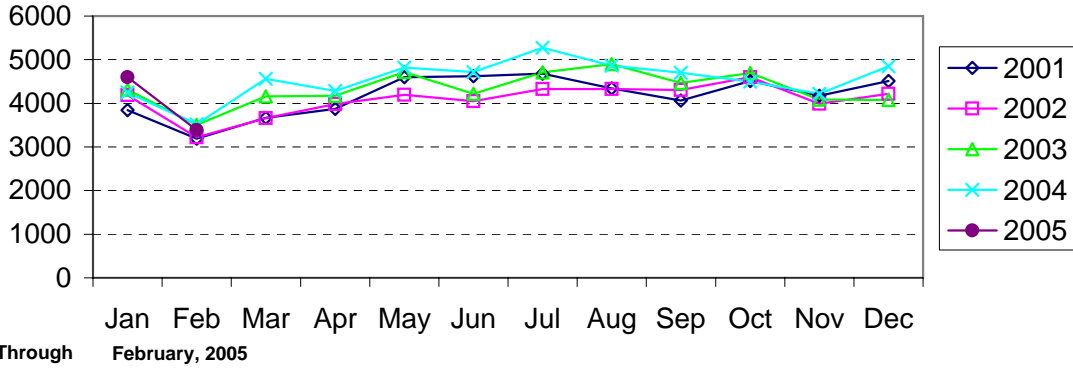


**Year-to-Date Property Index Clearance Rate
Charlotte-Mecklenburg Police Department: 2004
February, 2005**

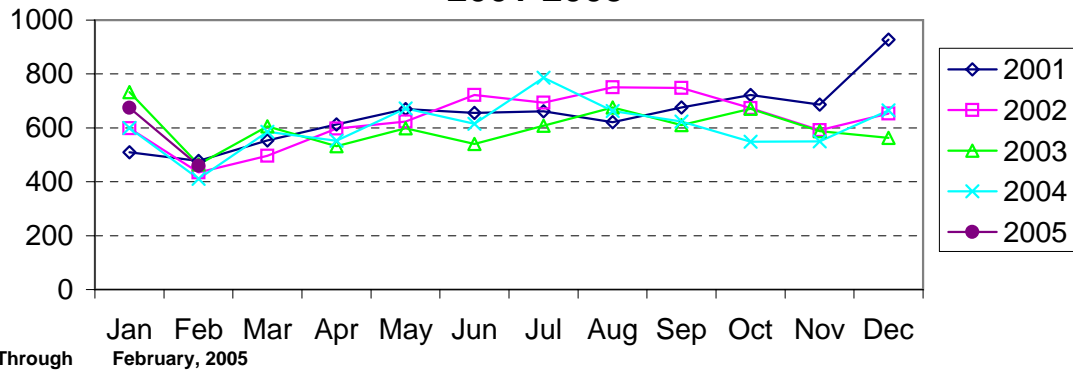


Clearance rates for crime reporting are calculated by dividing the number of crimes cleared during a designated time span by the number of crimes reported in the same period and converting the result to a percentage (multiplying by 100). Since cases from previous reporting periods can be cleared during the designated time span, the rate may be higher than 100%.

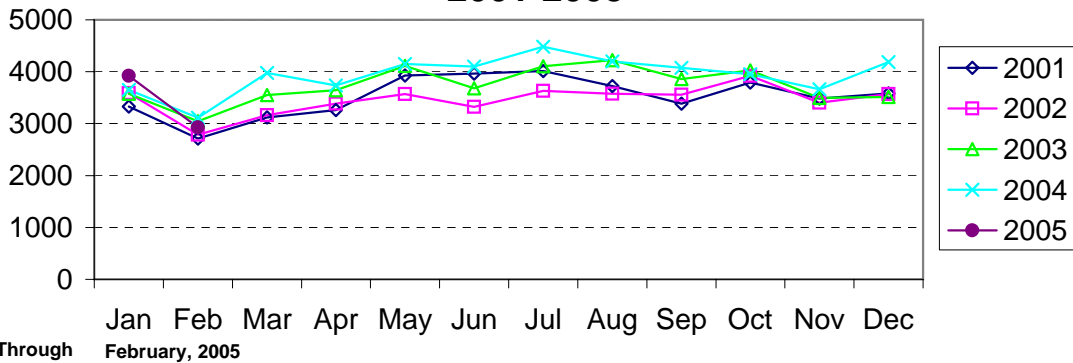
Index Offenses Reported by Month Charlotte-Mecklenburg Police Department: 2001-2005



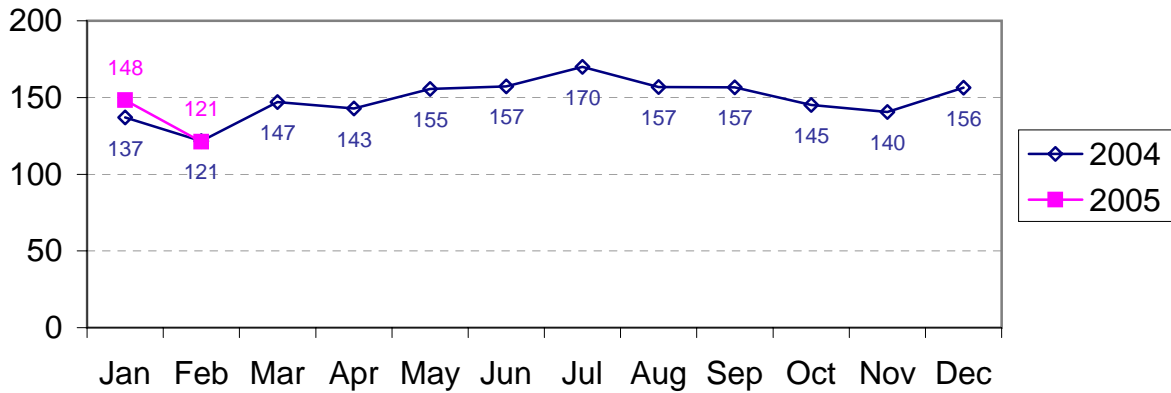
Violent Index Offenses Reported by Month Charlotte-Mecklenburg Police Department: 2001-2005



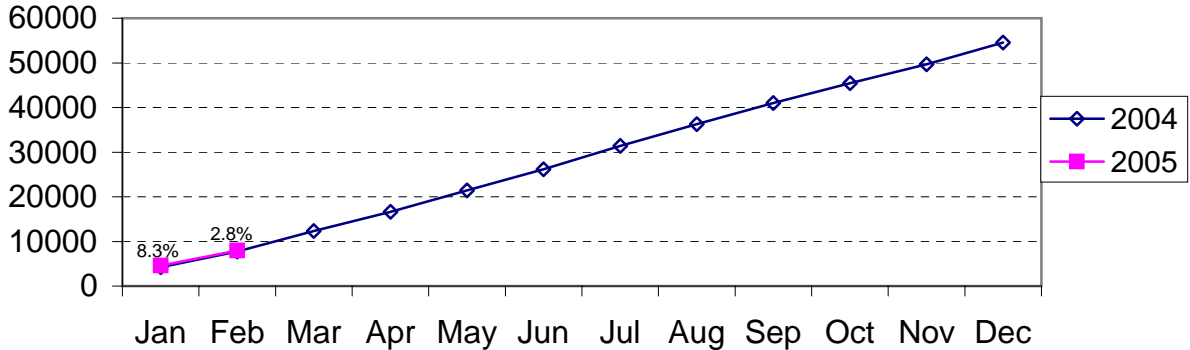
Property Index Offenses Reported by Month Charlotte-Mecklenburg Police Department: 2001-2005



Index Offense Per Day Average by Month Charlotte-Mecklenburg Police Department: 2004-2005

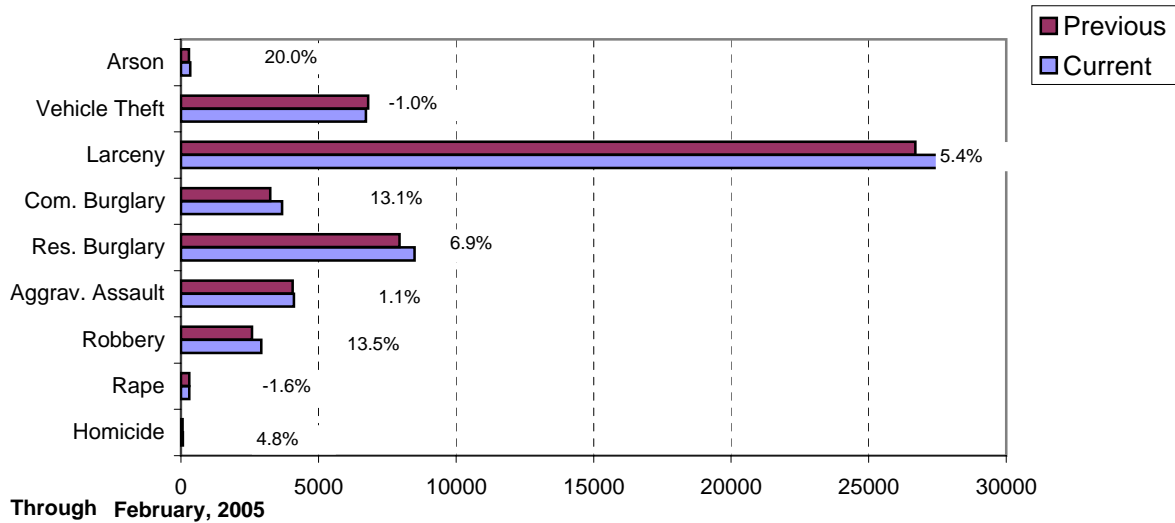


Index Offenses Year-to-Date Cumulative Totals Charlotte-Mecklenburg Police Department: 2004-2005

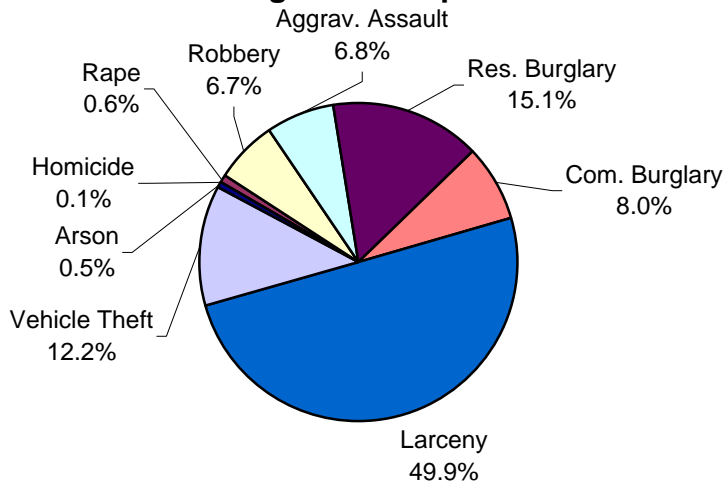


Through February, 2005

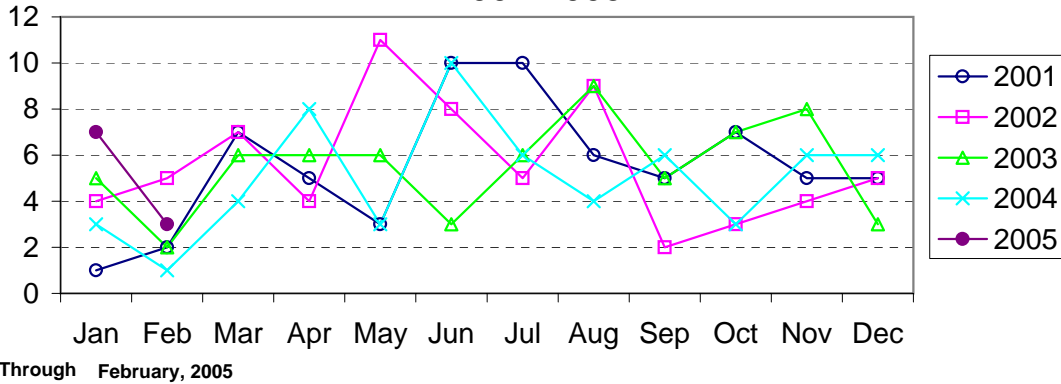
Index Offenses in Current and Previous 12 Months Charlotte-Mecklenburg Police Department



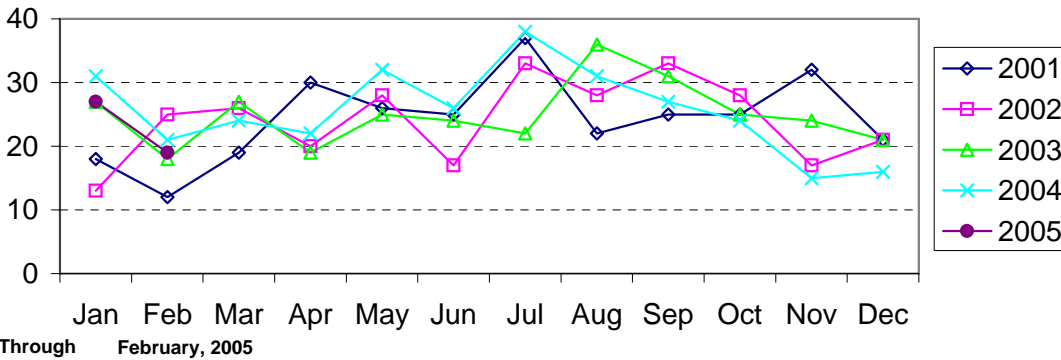
Year-to-Date Index Offenses by Type Charlotte-Mecklenburg Police Department: 2005



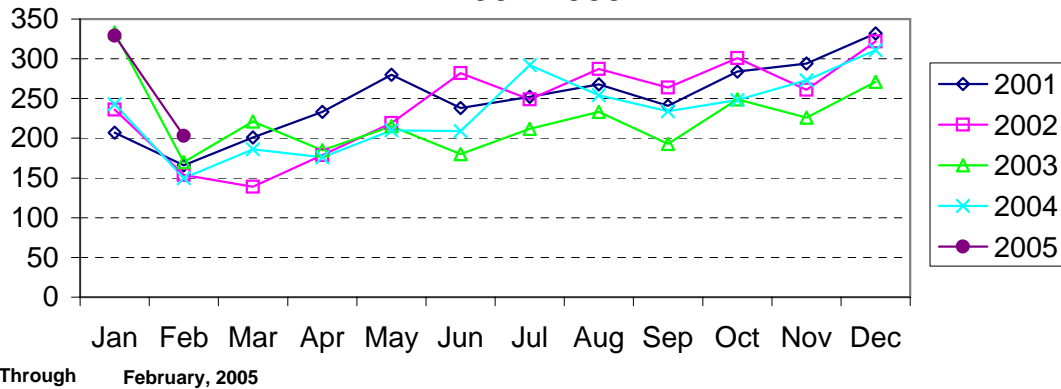
Homicide Reported by Month Charlotte-Mecklenburg Police Department: 2001-2005



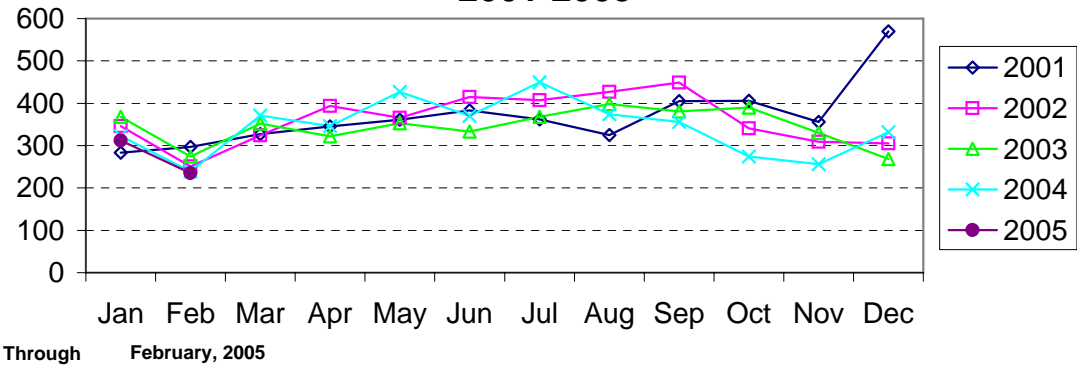
Rape Reported by Month Charlotte-Mecklenburg Police Department: 2001-2005



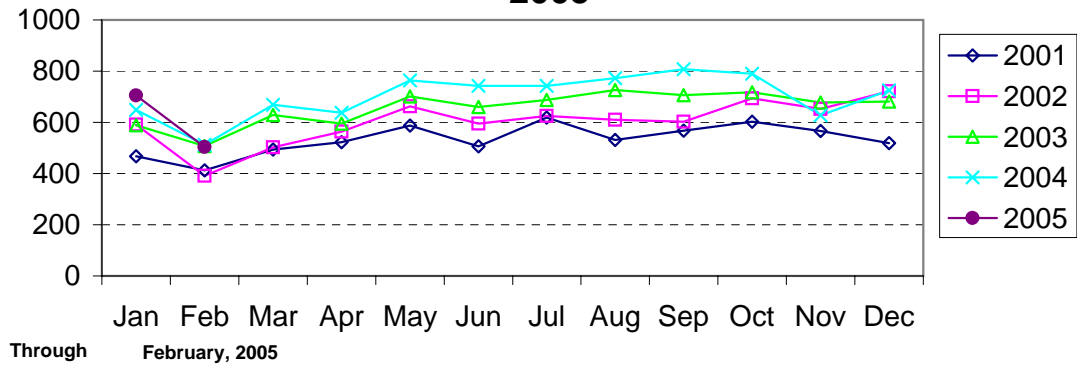
Robbery Reported by Month Charlotte-Mecklenburg Police Department: 2001-2005



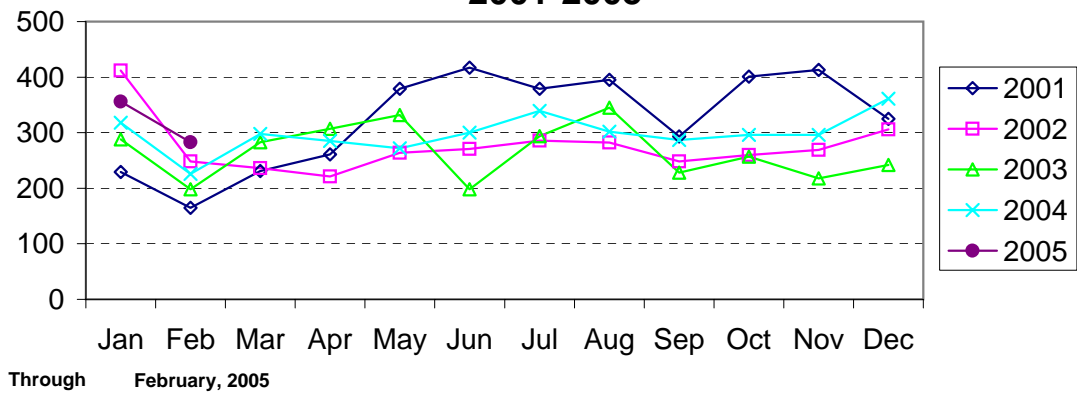
**Aggravated Assault Reported by Month
Charlotte-Mecklenburg Police Department:
2001-2005**



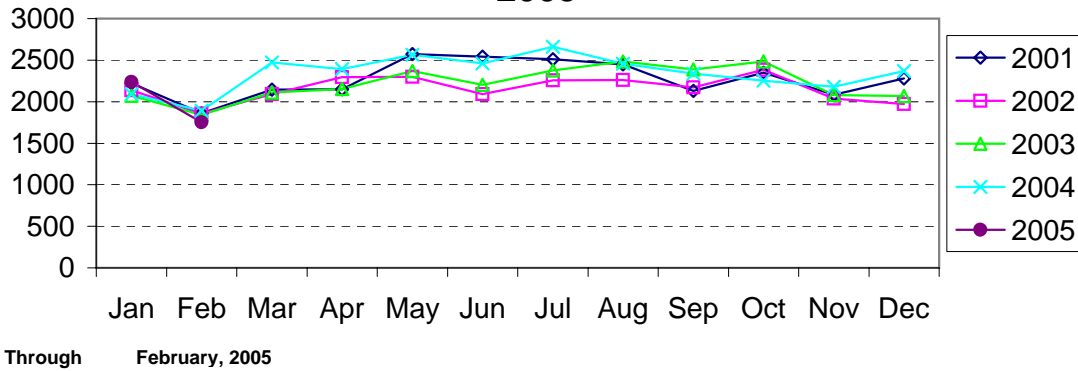
**Residential Burglary Reported by Month
Charlotte-Mecklenburg Police Department: 2001-
2005**



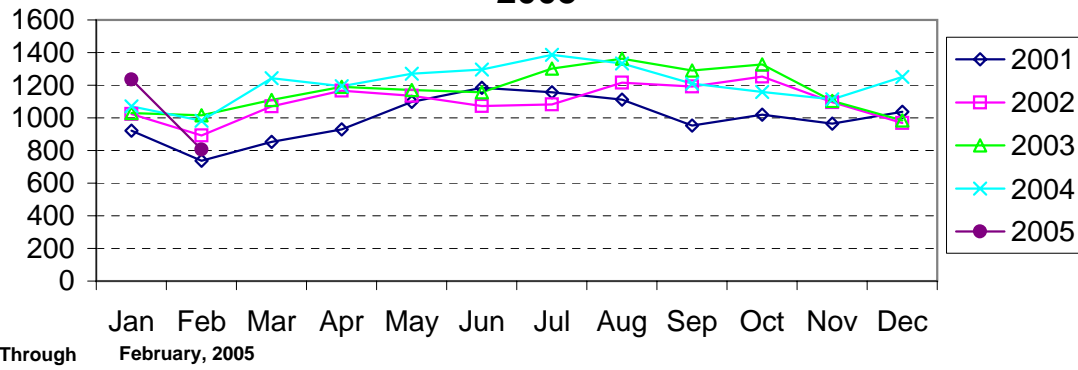
**Commercial Burglary Reported by Month
Charlotte-Mecklenburg Police Department:
2001-2005**



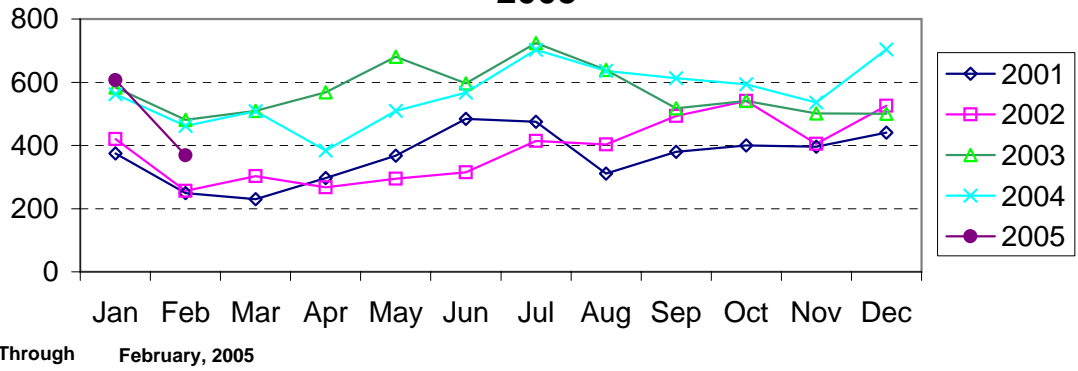
Larceny Reported by Month Charlotte-Mecklenburg Police Department: 2001-2005



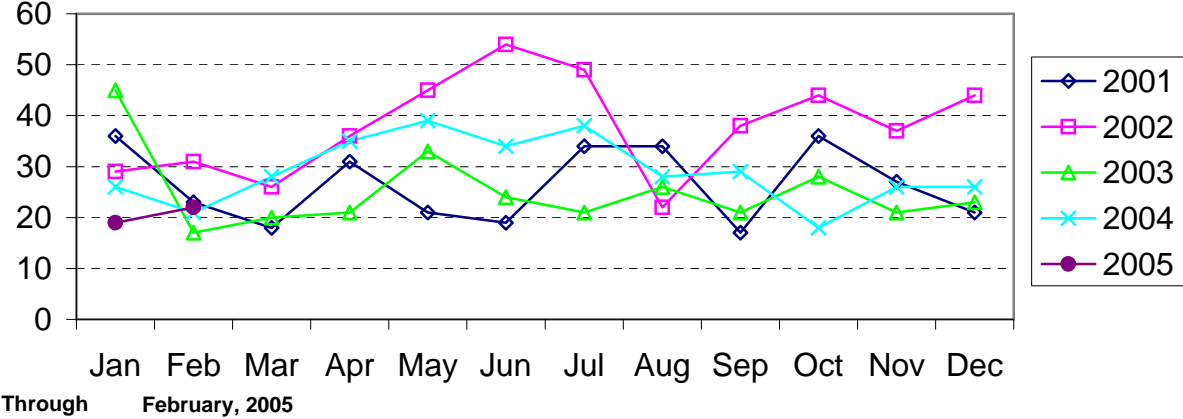
Larceny from Vehicle Reported by Month Charlotte-Mecklenburg Police Department: 2001-2005



Vehicle Theft Reported by Month Charlotte-Mecklenburg Police Department: 2001-2005



Arson Reported by Month Charlotte-Mecklenburg Police Department: 2001-2005



Index Offenses Reported by Division and Service Area of Occurrence									
West Service Area: Jan-Feb, 2004-2005									
INDEX_CATEGORIES	Westover (A2)			Freedom (A3)			West Service Area		
	2004	2005	% Change	2004	2005	% Change	2004	2005	% Change
MURDER & NON-NEGLIGENT MANSLAUGHTER	0	1	NA	0	1	NA	0	2	NA
RAPE	4	2	-50.0%	1	6	500.0%	5	8	60.0%
ACTUAL	4	2	-50.0%	1	6	500.0%	5	8	60.0%
ATTEMPTED	0	0	NA	0	0	NA	0	0	NA
ROBBERY	34	46	35.3%	47	79	68.1%	81	125	54.3%
ARMED	28	38	35.7%	37	74	100.0%	65	112	72.3%
STRONG-ARM	6	8	33.3%	10	5	-50.0%	16	13	-18.8%
AGGRAVATED ASSAULT	41	55	34.1%	51	80	56.9%	92	135	46.7%
BURGLARY	123	151	22.8%	179	268	49.7%	302	419	38.7%
RESIDENTIAL	76	69	-9.2%	132	149	12.9%	208	218	4.8%
COMMERCIAL	47	82	74.5%	47	119	153.2%	94	201	113.8%
LARCENY	229	248	8.3%	371	348	-6.2%	600	596	-0.7%
FROM AUTO	111	112	0.9%	185	147	-20.5%	296	259	-12.5%
BICYCLE	1	0	-100.0%	0	2	NA	1	2	100.0%
SHOPLIFTING	32	16	-50.0%	52	37	-28.8%	84	53	-36.9%
OTHERS	85	120	41.2%	134	162	20.9%	219	282	28.8%
VEHICLE THEFT	59	48	-18.6%	135	91	-32.6%	194	139	-28.4%
ARSON	6	1	-83.3%	7	2	-71.4%	13	3	-76.9%
TOTALS	496	552	11.3%	791	875	10.6%	1287	1427	10.9%
VIOLENT	79	104	31.6%	99	166	67.7%	178	270	51.7%
PROPERTY	417	448	7.4%	692	709	2.5%	1109	1157	4.3%

Index Offenses Reported by Division and Service Area of Occurrence									
Southeast Service Area: Jan-Feb, 2004-2005									
INDEX_CATEGORIES	Providence (B1)			Independence (B3)			Southeast Service Area		
	2004	2005	% Change	2004	2005	% Change	2004	2005	% Change
MURDER & NON-NEGLIGENT MANSLAUGHTER	0	1	NA	0	0	NA	0	1	NA
RAPE	6	1	-83.3%	4	8	100.0%	10	9	-10.0%
ACTUAL	6	1	-83.3%	4	8	100.0%	10	9	-10.0%
ATTEMPTED	0	0	NA	0	0	NA	0	0	NA
ROBBERY	21	18	-14.3%	34	38	11.8%	55	56	1.8%
ARMED	15	14	-6.7%	26	27	3.8%	41	41	0.0%
STRONG-ARM	6	4	-33.3%	8	11	37.5%	14	15	7.1%
AGGRAVATED ASSAULT	32	13	-59.4%	45	42	-6.7%	77	55	-28.6%
BURGLARY	152	122	-19.7%	174	163	-6.3%	326	285	-12.6%
RESIDENTIAL	70	78	11.4%	119	141	18.5%	189	219	15.9%
COMMERCIAL	82	44	-46.3%	55	22	-60.0%	137	66	-51.8%
LARCENY	272	274	0.7%	350	360	2.9%	622	634	1.9%
FROM AUTO	126	112	-11.1%	212	202	-4.7%	338	314	-7.1%
BICYCLE	1	3	200.0%	1	2	100.0%	2	5	150.0%
SHOPLIFTING	25	31	24.0%	30	37	23.3%	55	68	23.6%
OTHERS	120	128	6.7%	107	119	11.2%	227	247	8.8%
VEHICLE THEFT	45	52	15.6%	124	114	-8.1%	169	166	-1.8%
ARSON	3	2	-33.3%	4	7	75.0%	7	9	28.6%
TOTALS	531	483	-9.0%	735	732	-0.4%	1266	1215	-4.0%
VIOLENT	59	33	-44.1%	83	88	6.0%	142	121	-14.8%
PROPERTY	472	450	-4.7%	652	644	-1.2%	1124	1094	-2.7%

The data in the district breakdowns does not include a small number of offenses in which the location of the offense was unknown or was entered without a valid tract assignment. Districts are not equal in geographic size, demographics, zoning/development, and other factors that influence the rate of crimes committed in an area. Therefore, the comparison of raw offense totals across districts is not advisable.

Index Offenses Reported by Division and Service Area of Occurrence									
Northeast Service Area: Jan-Feb, 2004-2005									
INDEX_CATEGORIES	North (C1)			Hickory Grove (C3)			Northeast Service Area		
	2004	2005	% Change	2004	2005	% Change	2004	2005	% Change
MURDER & NON-NEGLIGENT MANSLAUGHTER	0	1	NA	0	2	NA	0	3	NA
RAPE	8	5	-37.5%	4	2	-50.0%	12	7	-41.7%
ACTUAL	7	5	-28.6%	4	1	-75.0%	11	6	-45.5%
ATTEMPTED	1	0	-100.0%	0	1	NA	1	1	0.0%
ROBBERY	30	39	30.0%	36	43	19.4%	66	82	24.2%
ARMED	24	33	37.5%	26	36	38.5%	50	69	38.0%
STRONG-ARM	6	6	0.0%	10	7	-30.0%	16	13	-18.8%
AGGRAVATED ASSAULT	60	43	-28.3%	55	63	14.5%	115	106	-7.8%
BURGLARY	184	266	44.6%	172	180	4.7%	356	446	25.3%
RESIDENTIAL	137	187	36.5%	131	133	1.5%	268	320	19.4%
COMMERCIAL	47	79	68.1%	41	47	14.6%	88	126	43.2%
LARCENY	613	598	-2.4%	299	278	-7.0%	912	876	-3.9%
FROM AUTO	350	324	-7.4%	164	144	-12.2%	514	468	-8.9%
BICYCLE	4	2	-50.0%	5	2	-60.0%	9	4	-55.6%
SHOPLIFTING	53	60	13.2%	18	23	27.8%	71	83	16.9%
OTHERS	206	212	2.9%	112	109	-2.7%	318	321	0.9%
VEHICLE THEFT	111	145	30.6%	101	125	23.8%	212	270	27.4%
ARSON	3	5	66.7%	3	7	133.3%	6	12	100.0%
TOTALS	1009	1102	9.2%	670	700	4.5%	1679	1802	7.3%
VIOLENT PROPERTY	98 911	88 1014	-10.2% 11.3%	95 575	110 590	15.8% 2.6%	193 1486	198 1604	2.6% 7.9%

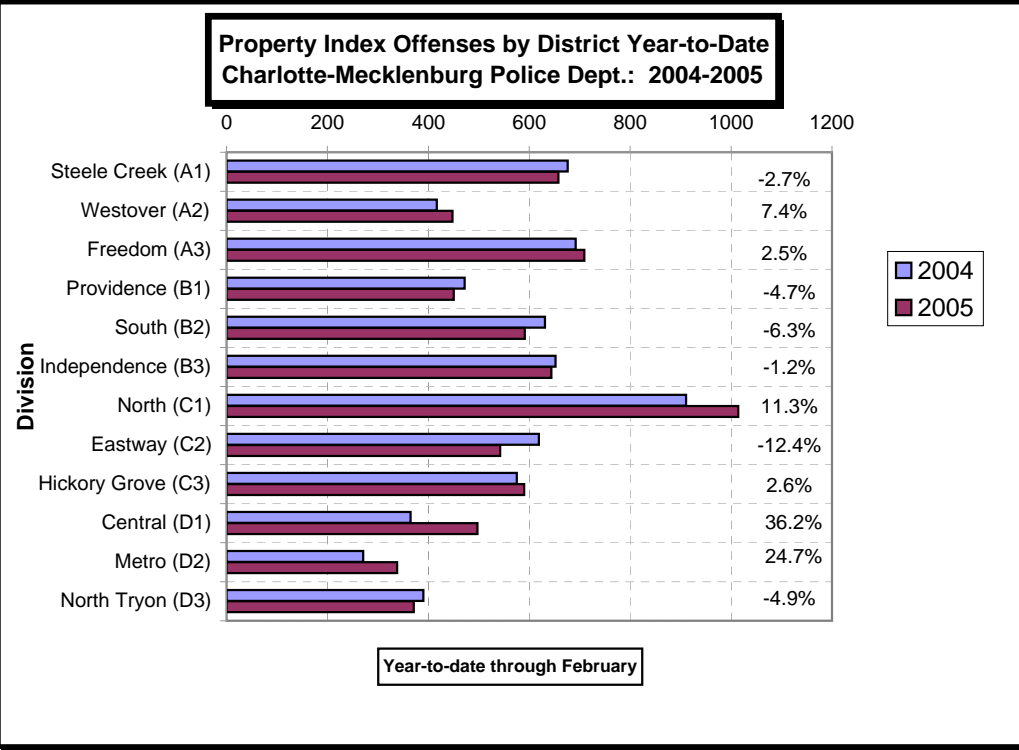
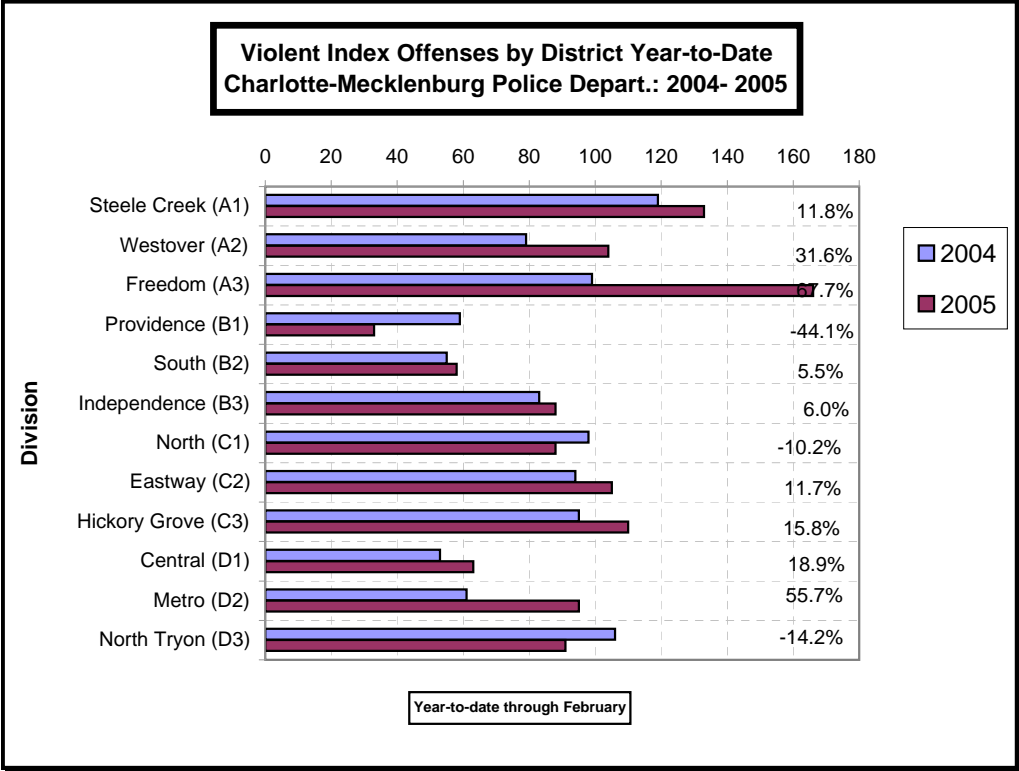
Index Offenses Reported by Division and Service Area of Occurrence									
Central Service Area: Jan-Feb, 2004-2005									
INDEX_CATEGORIES	Central (D1)			Metro (D2)			Central Service Area		
	2004	2005	% Change	2004	2005	% Change	2004	2005	% Change
MURDER & NON-NEGLIGENT MANSLAUGHTER	0	0	NA	0	3	NA	0	3	NA
RAPE	3	5	66.7%	5	1	-80.0%	8	6	-25.0%
ACTUAL	2	4	100.0%	5	2	-60.0%	7	6	-14.3%
ATTEMPTED	1	1	0.0%	0	-1	NA	1	0	-100.0%
ROBBERY	22	32	45.5%	26	37	42.3%	48	69	43.8%
ARMED	14	17	21.4%	23	28	21.7%	37	45	21.6%
STRONG-ARM	8	15	87.5%	3	9	200.0%	11	24	118.2%
AGGRAVATED ASSAULT	28	26	-7.1%	30	54	80.0%	58	80	37.9%
BURGLARY	56	70	25.0%	74	116	56.8%	130	186	43.1%
RESIDENTIAL	23	25	8.7%	56	96	71.4%	79	121	53.2%
COMMERCIAL	33	45	36.4%	18	20	11.1%	51	65	27.5%
LARCENY	273	388	42.1%	147	156	6.1%	420	544	29.5%
FROM AUTO	130	222	70.8%	65	69	6.2%	195	291	49.2%
BICYCLE	2	0	-100.0%	1	1	0.0%	3	1	-66.7%
SHOPLIFTING	8	8	0.0%	14	4	-71.4%	22	12	-45.5%
OTHERS	133	158	18.8%	67	82	22.4%	200	240	20.0%
VEHICLE THEFT	36	39	8.3%	48	63	31.3%	84	102	21.4%
ARSON	0	0	NA	2	3	50.0%	2	3	50.0%
TOTALS	418	560	34.0%	332	433	30.4%	750	993	32.4%
VIOLENT PROPERTY	53 365	63 497	18.9% 36.2%	61 271	95 338	55.7% 24.7%	114 636	158 835	38.6% 31.3%

The data in the district breakdowns does not include a small number of offenses in which the location of the offense was unknown or was entered without a valid tract assignment. Districts are not equal in geographic size, demographics, zoning/development, and other factors that influence the rate of crimes committed in an area. Therefore, the comparison of raw offense totals across districts is not advisable.

Index Offenses Reported by Division and Service Area of Occurrence									
East Service Area: Jan-Feb, 2004-2005									
INDEX_CATEGORIES	Eastway (C2)			North Tryon (D3)			East Service Area		
	2004	2005	% Change	2004	2005	% Change	2004	2005	% Change
MURDER & NON-NEGLIGENT MANSLAUGHTER	0	1	NA	1	0	-100.0%	1	1	0.0%
RAPE	1	5	400.0%	5	4	-20.0%	6	9	50.0%
ACTUAL	1	5	400.0%	4	4	0.0%	5	9	80.0%
ATTEMPTED	0	0	NA	1	0	-100.0%	1	0	-100.0%
ROBBERY	40	66	65.0%	42	42	0.0%	82	108	31.7%
ARMED	28	48	71.4%	34	36	5.9%	62	84	35.5%
STRONG-ARM	12	18	50.0%	8	6	-25.0%	20	24	20.0%
AGGRAVATED ASSAULT	53	33	-37.7%	58	45	-22.4%	111	78	-29.7%
BURGLARY	174	134	-23.0%	116	124	6.9%	290	258	-11.0%
RESIDENTIAL	97	97	0.0%	83	87	4.8%	180	184	2.2%
COMMERCIAL	77	37	-51.9%	33	37	12.1%	110	74	-32.7%
LARCENY	347	332	-4.3%	197	195	-1.0%	544	527	-3.1%
FROM AUTO	156	127	-18.6%	102	104	2.0%	258	231	-10.5%
BICYCLE	1	1	0.0%	2	2	0.0%	3	3	0.0%
SHOPLIFTING	73	83	13.7%	14	10	-28.6%	87	93	6.9%
OTHERS	117	121	3.4%	79	79	0.0%	196	200	2.0%
VEHICLE THEFT	96	73	-24.0%	75	50	-33.3%	171	123	-28.1%
ARSON	2	3	50.0%	2	2	0.0%	4	5	25.0%
TOTALS	713	647	-9.3%	496	462	-6.9%	1209	1109	-8.3%
VIOLENT	94	105	11.7%	106	91	-14.2%	200	196	-2.0%
PROPERTY	619	542	-12.4%	390	371	-4.9%	1009	913	-9.5%

Index Offenses Reported by Division and Service Area of Occurrence									
South Service Area: Jan-Feb, 2004-2005									
INDEX_CATEGORIES	Steele Creek (A1)			South (B2)			South Service Area		
	2004	2005	% Change	2004	2005	% Change	2004	2005	% Change
MURDER & NON-NEGLIGENT MANSLAUGHTER	3	0	-100.0%	0	0	NA	3	0	-100.0%
RAPE	5	5	0.0%	5	1	-80.0%	10	6	-40.0%
ACTUAL	4	5	25.0%	5	1	-80.0%	9	6	-33.3%
ATTEMPTED	1	0	-100.0%	0	0	NA	1	0	-100.0%
ROBBERY	34	63	85.3%	24	29	20.8%	58	92	58.6%
ARMED	26	50	92.3%	18	24	33.3%	44	74	68.2%
STRONG-ARM	8	13	62.5%	6	5	-16.7%	14	18	28.6%
AGGRAVATED ASSAULT	77	65	-15.6%	26	28	7.7%	103	93	-9.7%
BURGLARY	143	134	-6.3%	137	120	-12.4%	280	254	-9.3%
RESIDENTIAL	115	71	-38.3%	111	76	-31.5%	226	147	-35.0%
COMMERCIAL	28	63	125.0%	26	44	69.2%	54	107	98.1%
LARCENY	415	408	-1.7%	419	404	-3.6%	834	812	-2.6%
FROM AUTO	196	234	19.4%	231	244	5.6%	427	478	11.9%
BICYCLE	2	2	0.0%	0	2	NA	2	4	100.0%
SHOPLIFTING	81	32	-60.5%	26	25	-3.8%	107	57	-46.7%
OTHERS	136	140	2.9%	162	133	-17.9%	298	273	-8.4%
VEHICLE THEFT	109	112	2.8%	70	62	-11.4%	179	174	-2.8%
ARSON	9	4	-55.6%	5	5	0.0%	14	9	-35.7%
TOTALS	795	791	-0.5%	686	649	-5.4%	1481	1440	-2.8%
VIOLENT	119	133	11.8%	55	58	5.5%	174	191	9.8%
PROPERTY	676	658	-2.7%	631	591	-6.3%	1307	1249	-4.4%

The data in the district breakdowns does not include a small number of offenses in which the location of the offense was unknown or was entered without a valid tract assignment. Districts are not equal in geographic size, demographics, zoning/development, and other factors that influence the rate of crimes committed in an area. Therefore, the comparison of raw offense totals across districts is not advisable.



The data in the district breakdowns does not include a small number of offenses in which the location of the offense was unknown or was entered without a valid tract assignment. Districts are not equal in geographic size, demographics, zoning/development, and other factors that influence the rate of crimes committed in an area. Therefore, the comparison of raw offense totals across districts is not advisable.

Arrests by Charlotte-Mecklenburg Police Department
Year-To-Date: 2004-2005
(Through February)

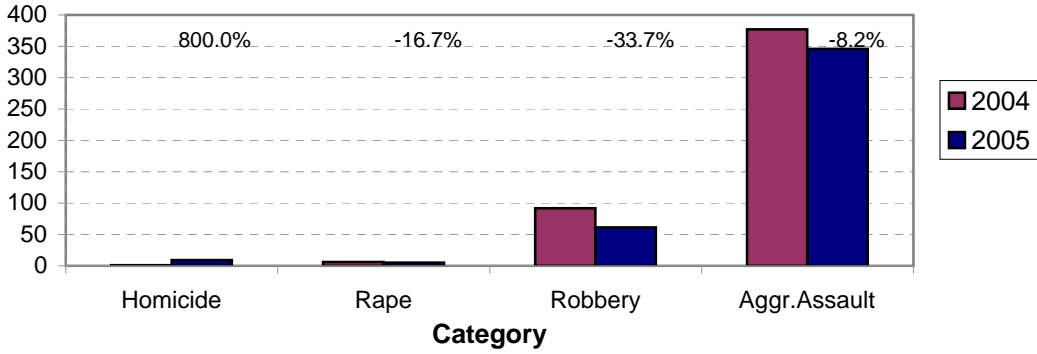
CATEGORY	ADULTS (AGE 18 & OLDER):			JUVENILES (UNDER 18):			TOTAL ARRESTS:		
	2004 Y-T-D	2005 Y-T-D	% CHANGE	2004 Y-T-D	2005 Y-T-D	% CHANGE	2004 Y-T-D	2005 Y-T-D	% CHANGE
Murder/Non-Negligent Manslaughter	1	9	800.0%	0	0	NA	1	9	800.0%
Negligent & Vehicular Manslaughter	3	1	-66.7%	0	0	NA	3	1	-66.7%
Rape	5	5	0.0%	1	0	-100.0%	6	5	-16.7%
Robbery	57	44	-22.8%	35	17	-51.4%	92	61	-33.7%
Aggravated Assault	320	306	-4.4%	57	40	-29.8%	377	346	-8.2%
Burglary	90	111	23.3%	22	41	86.4%	112	152	35.7%
Larceny	218	241	10.6%	88	72	-18.2%	306	313	2.3%
Vehicle Theft	16	12	-25.0%	38	6	-84.2%	54	18	-66.7%
Non-Aggravated Assault	265	283	6.8%	150	131	-12.7%	415	414	-0.2%
Arson	3	1	-66.7%	3	3	0.0%	6	4	-33.3%
Forgery/Counterfiet	21	25	19.0%	2	1	-50.0%	23	26	13.0%
Fraud	89	89	0.0%	0	0	NA	89	89	0.0%
Embezzlement	13	14	7.7%	1	1	0.0%	14	15	7.1%
Stolen Property	79	74	-6.3%	15	16	6.7%	94	90	-4.3%
Vandalism	44	26	-40.9%	29	22	-24.1%	73	48	-34.2%
Weapons	66	95	43.9%	10	12	20.0%	76	107	40.8%
Prostitution	33	40	21.2%	3	0	-100.0%	36	40	11.1%
Sex Offenses	23	37	60.9%	3	0	-100.0%	26	37	42.3%
Drugs	371	436	17.5%	38	38	0.0%	409	474	15.9%
Gambling	2	1	-50.0%	0	0	NA	2	1	-50.0%
Offenses vs. Family	1	2	100.0%	0	0	NA	1	2	100.0%
DUI	282	300	6.4%	2	1	-50.0%	284	301	6.0%
Liquor	24	20	-16.7%	0	1	NA	24	21	-12.5%
Disorder.Conduct	96	83	-13.5%	53	74	39.6%	149	157	5.4%
Other Non-Traffic	1191	1278	7.3%	118	134	13.6%	1309	1412	7.9%
VIOLENT INDEX¹	383	364	-5.0%	93	57	-38.7%	476	421	-11.6%
PROPERTY INDEX²	327	365	11.6%	151	122	-19.2%	478	487	1.9%
INDEX SUBTOTAL	710	729	2.7%	244	179	-26.6%	954	908	-4.8%
PART 2 SUBTOTAL³	2603	2804	7.7%	424	431	1.7%	3027	3235	6.9%
TOTAL	3313	3533	6.6%	668	610	-8.7%	3981	4143	4.1%

¹Violent Index includes murder and non-negligent manslaughter, rape, robbery, and aggravated assault.

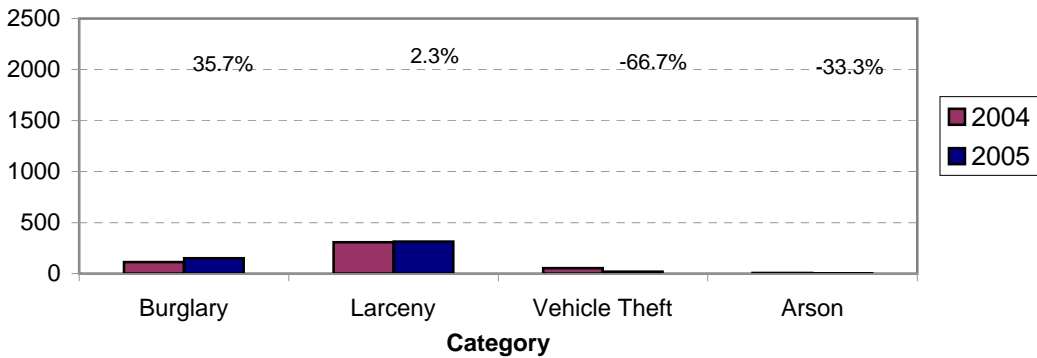
²Property Index includes burglary, larceny, vehicle theft, and arson.

³Part 2 crimes include non-traffic crimes not counted in the Index totals.

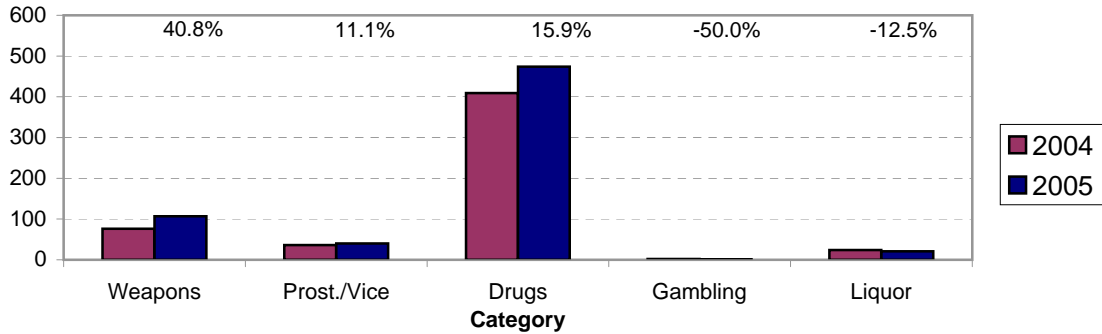
**Violent Index Arrests Year-to-Date
Charlotte-Mecklenburg Police Department: 2004-2005
(Through February)**



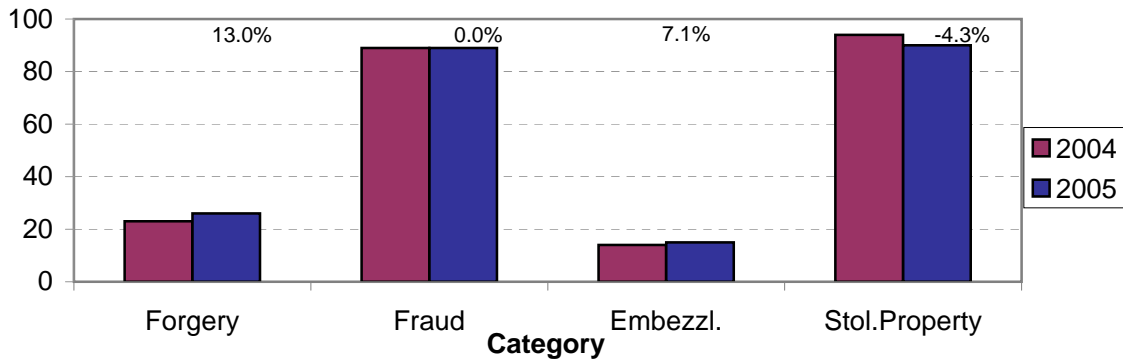
**Property Index Arrests Year-to-Date
Charlotte-Mecklenburg Police Department: 2004-2005
(Through February)**



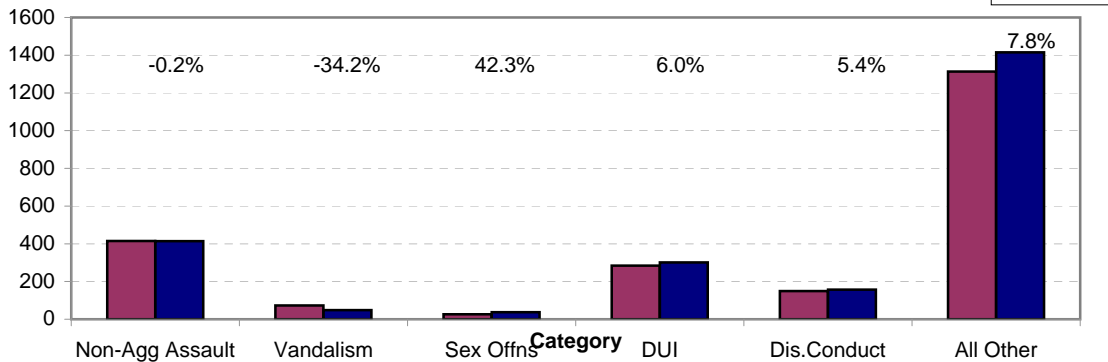
**Arrests for Vice/CCW/Drugs/Etc. Year-to-Date
Charlotte-Mecklenburg Police Department: 2004 - 2005
(Through February)**



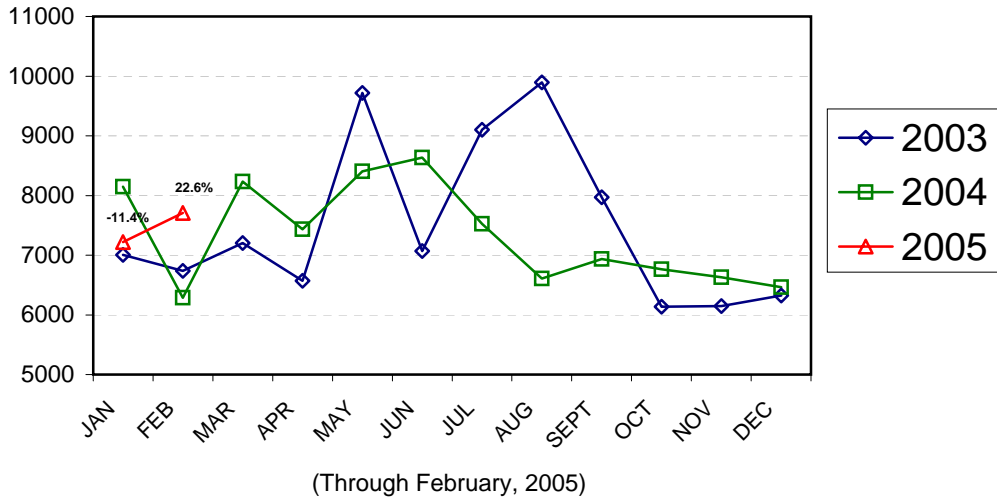
**Arrests for Property/White Collar Crime Year-to-Date
Charlotte-Mecklenburg Police Department: 2004- 2005
(Through February)**



**Arrests for Other Categories Year-to-Date
Charlotte-Mecklenburg Police Department: 2004 - 2005
(Through February)**

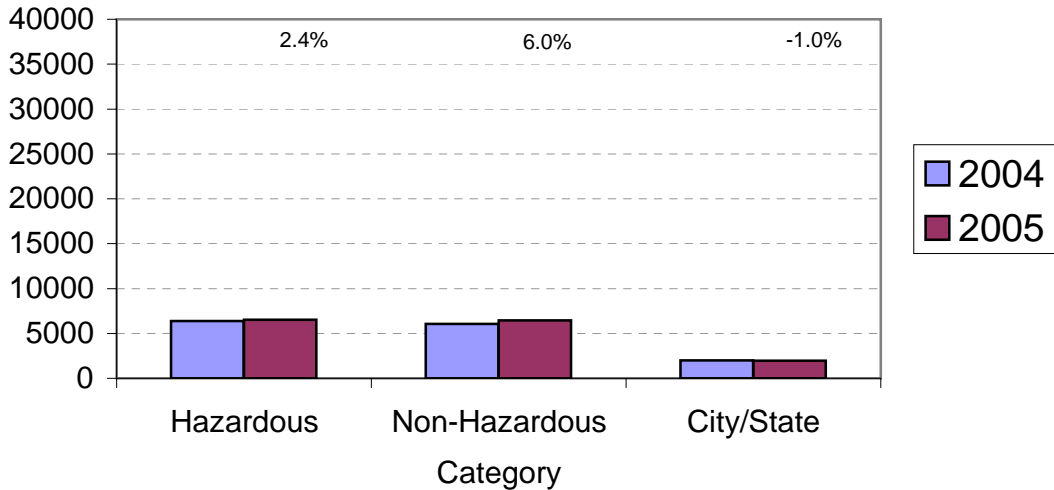


**Total Citation Enforcement by Month
Charlotte-Mecklenburg Police Dept.: 2003-2005**

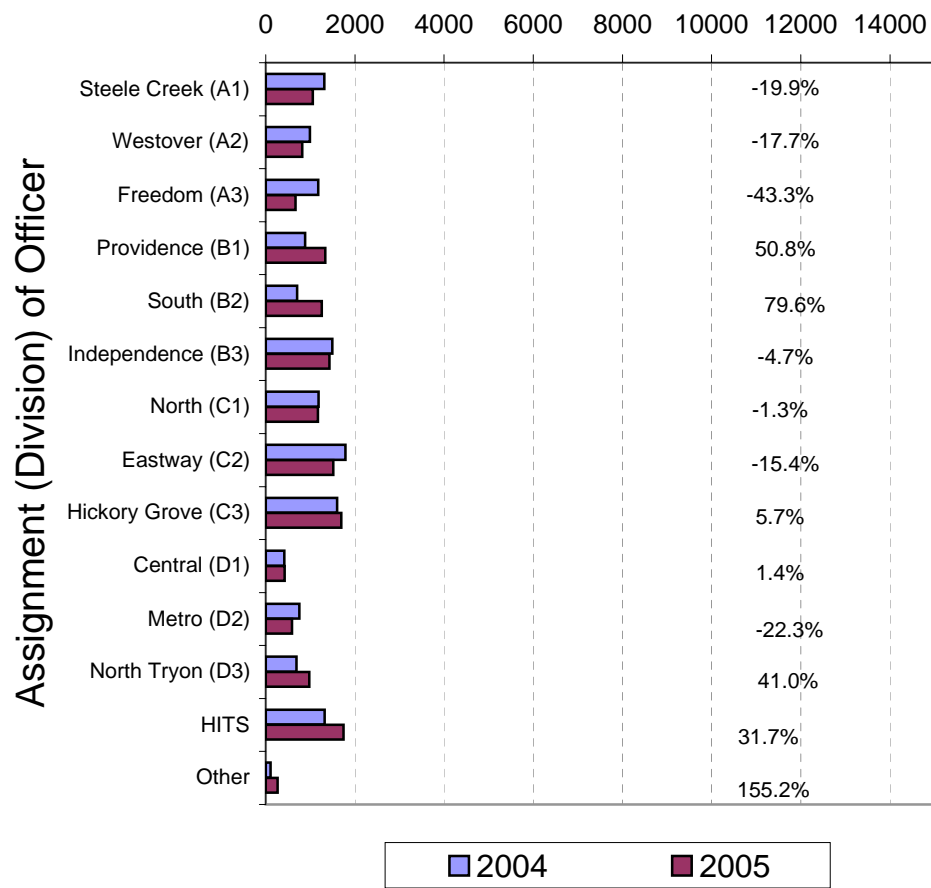


(Includes Hazardous, Non-Hazardous, and City/State Citations)

**CMPD Citation Enforcement by Category
Year-to-Date, 2004 - 2005
(Through February, 2005)**



**Citations Issued Year-to-Date by CMPD Divisions
2004 - 2005
(Through February, 2005)**

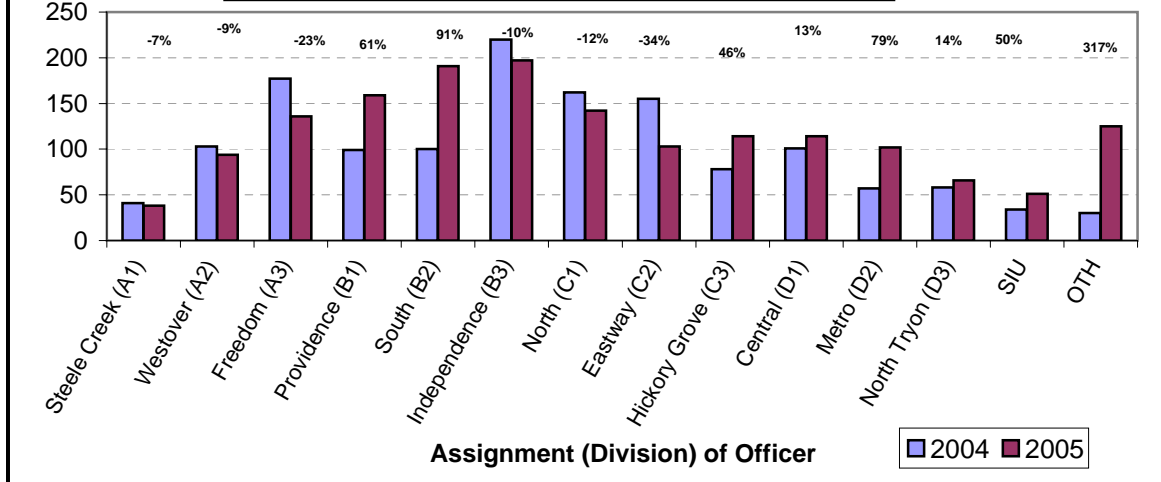


Note: 2003 and 2004 data for HITS and Other was adjusted in April, 2004.

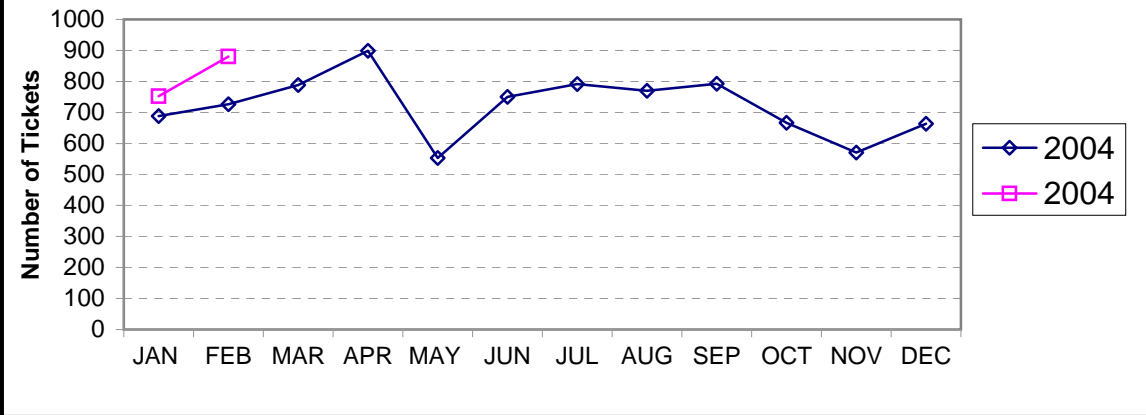
Citations Issued by the Charlotte Mecklenburg Police Officers Year-to-Date (Through February, 2005)			
Total Citations	2004	2005	% Change
Hazardous	6,367	6,520	2.4%
Non-Hazardous	6,076	6,438	6.0%
Other City/State Statute/Ordinance	1,990	1,970	-1.0%
Total	14,433	14,928	3.4%

"Safe Speed" Program: 2005 (Through February, 2005)	
Total Citations	5916
(Citations issued through the "Safe Speed" program are not included in the CMPD citation totals used in the summary chart above or in the other citation charts.)	

**Warning Tickets Issued by CMPD Division
Year-to-Date, 2004 - 2005
Through February, 2004**



**Total Warning Tickets Issued by CMPD
By Month: 2004 - 2005**



**Warning Tickets Issued by CMPD Year-to-Date
Through February, 2004**

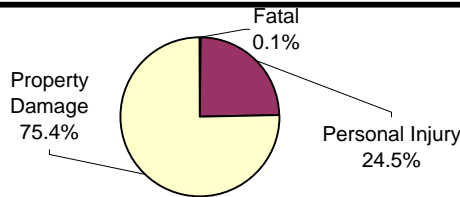
	2004	2005	% Change
Total Warning Tickets	1415	1632	15.3%

Traffic Collison Reports
Charlotte-Mecklenburg Police Department
Year-to-Date: 2004-2005
(Through February)

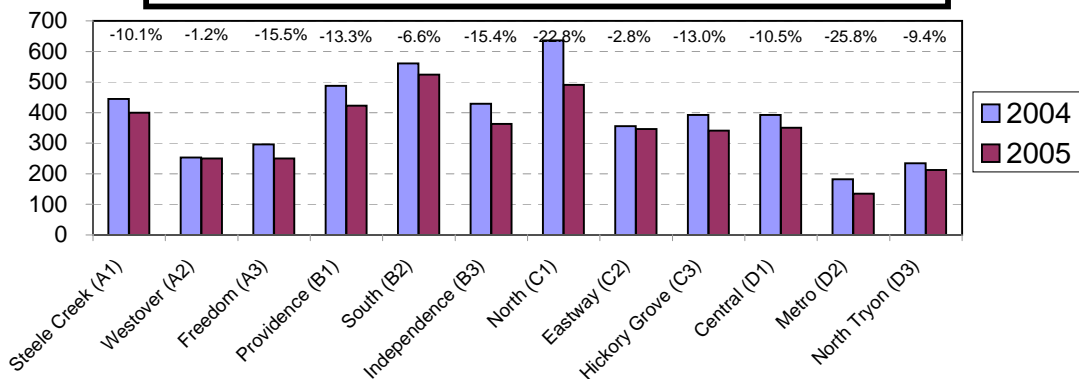
<u>Type</u>	<u>2004</u>	<u>2005</u>	<u>% Change</u>
Fatal Collisions	7	6	-14.3%
Vehicle Occupants Killed	6	6	0.0%
Pedestrians Killed	1	1	0.0%
Personal Injury Collisions	1115	998	-10.5%
Property Damage Collisions	3560	3096	-13.0%
Total Collisions	4682	4100	-12.4%

* The number of fatal collisions and the number of persons killed (fatalities) in those incidents is taken from the HITS file. Their records are updated for deaths that occur after the initial report is filed.

Traffic Collisions Reported by Type
Charlotte-Mecklenburg Police Department:
2005 Year-to-Date
(Through February)



Traffic Collisions Reported by Charlotte-Mecklenburg Police Dept.
Year-to-Date By Location (Division) : 2004 -2005
(Through February)



Uniform Crime Reporting Procedures:

The Charlotte-Mecklenburg Police Department reports offense and arrest statistics in accordance with standard Uniform Crime Reporting (UCR) guidelines. UCR policy states that any adjustments to previous months can be made on the current month's report:

...In tabulating crime counts, an agency may find that offense totals for past months require adjustments due to developments in the investigation or other handling of the matter. It may be necessary to adjust totals reported to UCR for the past month or prior months. Needed adjustments can be made on the current month's report and do not affect the reliability of the figures in that such adjustments tend to equalize each other from month to month over a period of time.

- *Uniform Crime Reporting Handbook*, FBI, 1984, p. 42-43

We are required to report crime monthly to the UCR program, and we do therefore make an effort to process monthly changes in a timely manner. However, occasionally due to the review and processing required for reclassifying, unfounding or clearing cases, the current month's totals may reflect the processing of a backlog of these changes from previous months.

Users of the data are cautioned that conclusions about substantial changes in crime trends or in clearance rates based on only a single month's data or trend may reflect some of these adjustments. For this reason, in addition to the monthly and year-to-date trends on Page 1, the monthly report routinely includes a comparison for the previous 12 months (p. 4), as well as graphs that provide seasonal/monthly comparisons over a five-year period (p. 5-8).

This report was compiled by the Research, Planning, and Analysis Division with the assistance of volunteer Doris Bowen.

We make an effort to present the most accurate information available at the time this report is published. Please notify the Research, Planning, and Analysis office if you have any questions about the data in this report or about an error that was missed in proofing the report.

The division names adopted in 2003 are used in this report; the old district designations is shown in parentheses.