



**CHARLOTTE-MECKLENBURG POLICE DEPARTMENT
MONTHLY SUMMARY REPORT
NOVEMBER, 2004**

**Darrel Stephens
Chief of Police**

INDEX OFFENSES REPORTED TO CHARLOTTE-MECKLENBURG POLICE DEPARTMENT

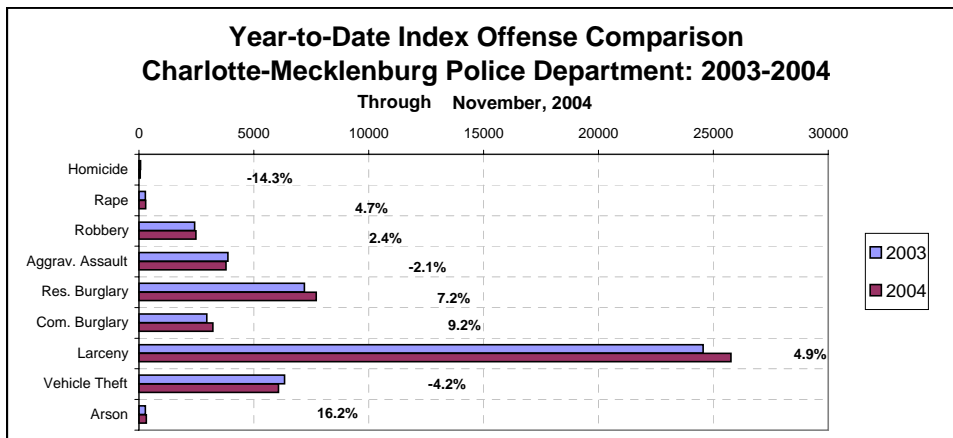
November, 2004 INDEX OFFENSES	# THIS MONTH	% OF ALL INDEX	# LAST MONTH	MONTHLY % CHANGE	SAME MONTH LAST YEAR	MONTHLY % CHANGE	THIS YEAR TO DATE	LAST YEAR TO DATE	ANNUAL % CHANGE
HOMICIDE (MURDER & NON- NEGLIGENT MANSLAUGHTER)	6	0.1%	3	100.0%	8	-25.0%	54	63	-14.3%
RAPE TOTAL	15	0.4%	24	-37.5%	24	-37.5%	291	278	4.7%
ACTUAL	10	0.2%	21	-52.4%	24	-58.3%	264	244	8.2%
ATTEMPT	5	0.1%	3	66.7%	0 NA		27	34	-20.6%
ROBBERY TOTAL	273	6.5%	248	10.1%	226	20.8%	2475	2417	2.4%
ARMED	226	5.4%	118	91.5%	176	28.4%	1860	1896	-1.9%
STRONG-ARM	47	1.1%	130	-63.8%	50	-6.0%	615	521	18.0%
AGGRAVATED ASSAULT TOTAL	256	6.1%	274	-6.6%	330	-22.4%	3786	3869	-2.1%
BURGLARY TOTAL	924	21.9%	1086	-14.9%	895	3.2%	10935	10143	7.8%
RESIDENTIAL	628	14.9%	790	-20.5%	677	-7.2%	7716	7195	7.2%
COMMERCIAL	296	7.0%	296	0.0%	218	35.8%	3219	2948	9.2%

FORCE	742	17.6%	904	-17.9%	722	2.8%	8870	8010	10.7%
NO FORCE	113	2.7%	108	4.6%	133	-15.0%	1408	1514	-7.0%
ATTEMPT	69	1.6%	74	-6.8%	40	72.5%	657	609	7.9%
LARCENY TOTAL	2178	51.7%	2253	-3.3%	2079	4.8%	25761	24559	4.9%
\$200 AND OVER	1063	25.2%	1097	-3.1%	1046	1.6%	12575	12258	2.6%
\$50 TO \$200	424	10.1%	419	1.2%	352	20.5%	4766	4368	9.1%
UNDER \$50	691	16.4%	737	-6.2%	681	1.5%	8420	7933	6.1%

FROM AUTO	1114	26.4%	1159	-3.9%	1104	0.9%	13260	13059	1.5%
BICYCLE	22	0.5%	22	0.0%	11	100.0%	228	196	16.3%
SHOPLIFTING	227	5.4%	197	15.2%	264	-14.0%	2620	2522	3.9%
OTHERS	815	19.3%	875	-6.9%	700	16.4%	9653	8782	9.9%
VEHICLE THEFT TOTAL	536	12.7%	593	-9.6%	501	7.0%	6073	6340	-4.2%
ARSON TOTAL	26	0.6%	18	44.4%	21	23.8%	322	277	16.2%
TOTALS	4214	100.0%	4499	-6.3%	4084	3.2%	49697	47946	3.7%
VIOLENT PROPERTY	550 3664	13.1% 86.9%	549 3950	0.2% -7.2%	588 3496	-6.5% 4.8%	6606 43091	6627 41319	-0.3% 4.3%

NOTE: Internal robbery breakdowns by armed and strong-arm in October reflect the late reclassification of some cases from previous months from armed robbery to strong-arm robbery.

NOTE: These totals include offenses reported to the Charlotte-Mecklenburg Police Department in accordance with the Uniform Crime Reporting Program. Totals for homicide do not include cases investigated by the police but classed by UCR guidelines as negligent manslaughter or as "justifiable homicide."



INDEX CLEARANCES REPORTED BY THE CHARLOTTE-MECKLENBURG POLICE DEPARTMENT

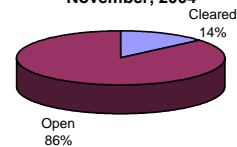
November, 2004 INDEX CLEARANCES	THIS MONTH:		LAST MONTH:		SAME MO. LAST YR:		THIS YEAR TO DATE:		LAST YEAR TO DATE:	
	NO.	%	NO.	%	NO.	%	NO.	%	NO.	%
MURDER & NON-NEGLIGENT MANSLAUGHTER	5	83.3%	6	200.0%	4	50.0%	37	68.5%	33	52.4%
RAPE TOTAL	12	80.0%	16	66.7%	37	154.2%	170	58.4%	208	74.8%
ACTUAL	11	110.0%	13	61.9%	36	150.0%	154	58.3%	186	76.2%
ATTEMPT	1	20.0%	3	100.0%	1	#DIV/0!	16	59.3%	22	64.7%
ROBBERY TOTAL	62	22.7%	62	25.0%	123	54.4%	600	24.2%	573	23.7%
ARMED	47	20.8%	32	27.1%	73	41.5%	432	23.2%	379	20.0%
STRONG-ARM	15	31.9%	30	23.1%	50	100.0%	168	27.3%	194	37.2%
AGGRAVATED ASSAULT TOTAL	139	54.3%	166	60.6%	848	257.0%	1933	51.1%	2779	71.8%
BURGLARY TOTAL	165	17.9%	103	9.5%	213	23.8%	1194	10.9%	1320	13.0%
RESIDENTIAL	119	18.9%	87	11.0%	157	23.2%	964	12.5%	902	12.5%
COMMERCIAL	46	15.5%	16	5.4%	56	25.7%	230	7.1%	418	14.2%
LARCENY TOTAL	369	16.9%	325	14.4%	811	39.0%	3479	13.5%	3726	15.2%
FROM AUTO	52	4.7%	32	2.8%	14	1.3%	399	3.0%	405	3.1%
BICYCLE	4	18.2%	1	4.5%	5	45.5%	18	7.9%	23	11.7%
SHOPLIFTING	173	76.2%	137	69.5%	244	92.4%	1668	63.7%	1527	60.5%
OTHERS	140	17.2%	155	17.7%	422	60.3%	1394	14.4%	1645	18.7%
VEHICLE THEFT TOTAL	96	17.9%	105	17.7%	191	38.1%	1064	17.5%	1359	21.4%
ARSON TOTAL	3	11.5%	3	16.7%	5	23.8%	81	25.2%	69	24.9%
TOTALS	851	20.2%	786	17.5%	2232	54.7%	8558	17.2%	10067	21.0%
VIOLENT PROPERTY	218	39.6%	250	45.5%	1012	172.1%	2740	41.5%	3593	54.2%
	633	17.3%	536	13.6%	1220	34.9%	5818	13.5%	6474	15.7%

NOTE: Clearances are reported in accordance with Uniform Crime Report guidelines. Since clearances are not counted until they are entered until they are entered into the Records system, any delays in processing may result in some clearances being reported in succeeding months. The significant increase in clearances in Nov., 2003, was the result of the entry of clearances from 2002 and 2003 that were processed in the Case Management system but were not entered in the mainframe Records system until that month.

**Year-to-Date Violent Index Clearance Rate
Charlotte-Mecklenburg Police Department: 2004
November, 2004**

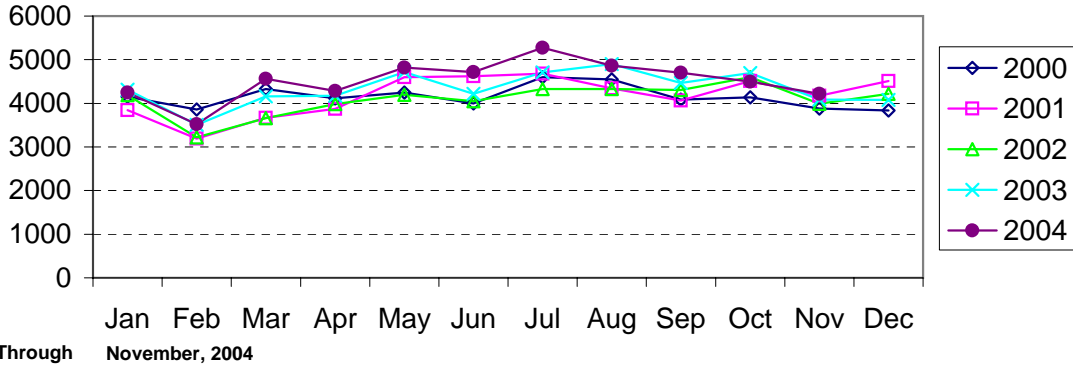


**Year-to-Date Property Index Clearance Rate
Charlotte-Mecklenburg Police Department: 2004
November, 2004**

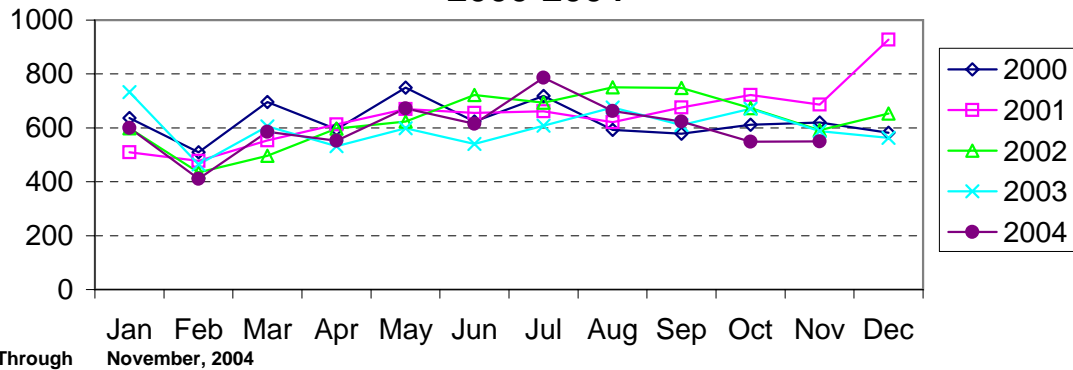


Clearance rates for crime reporting are calculated by dividing the number of crimes cleared during a designated time span by the number of crimes reported in the same period and converting the result to a percentage (multiplying by 100). Since cases from previous reporting periods can be cleared during the designated time span, the rate may be higher than 100%.

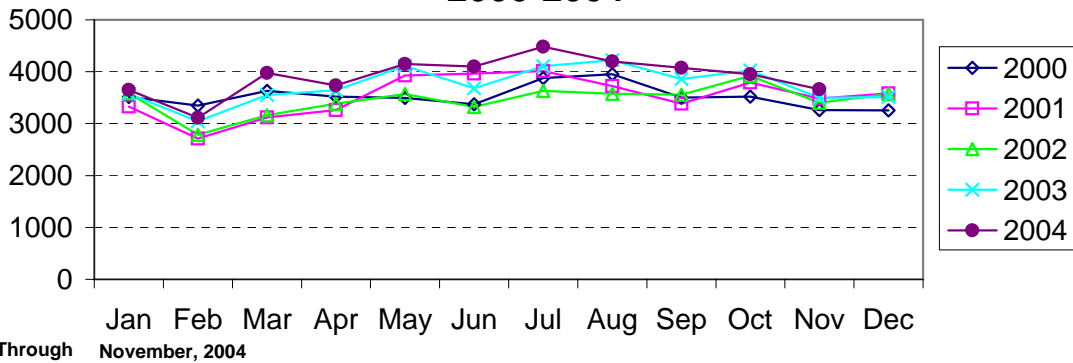
Index Offenses Reported by Month Charlotte-Mecklenburg Police Department: 2000-2004



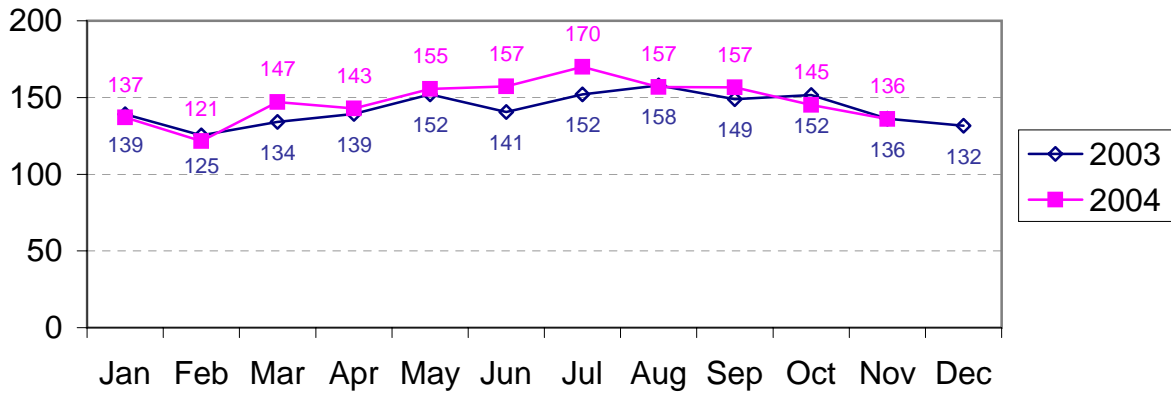
Violent Index Offenses Reported by Month Charlotte-Mecklenburg Police Department: 2000-2004



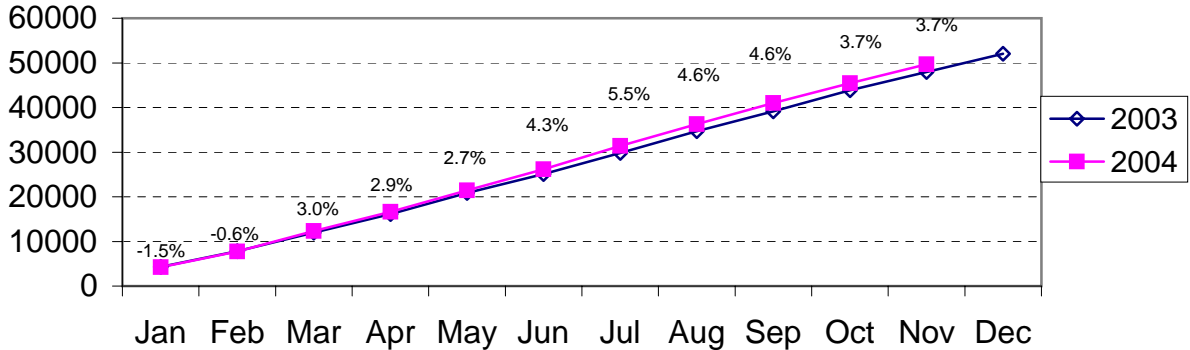
Property Index Offenses Reported by Month Charlotte-Mecklenburg Police Department: 2000-2004



Index Offense Per Day Average by Month Charlotte-Mecklenburg Police Department: 2003-2004

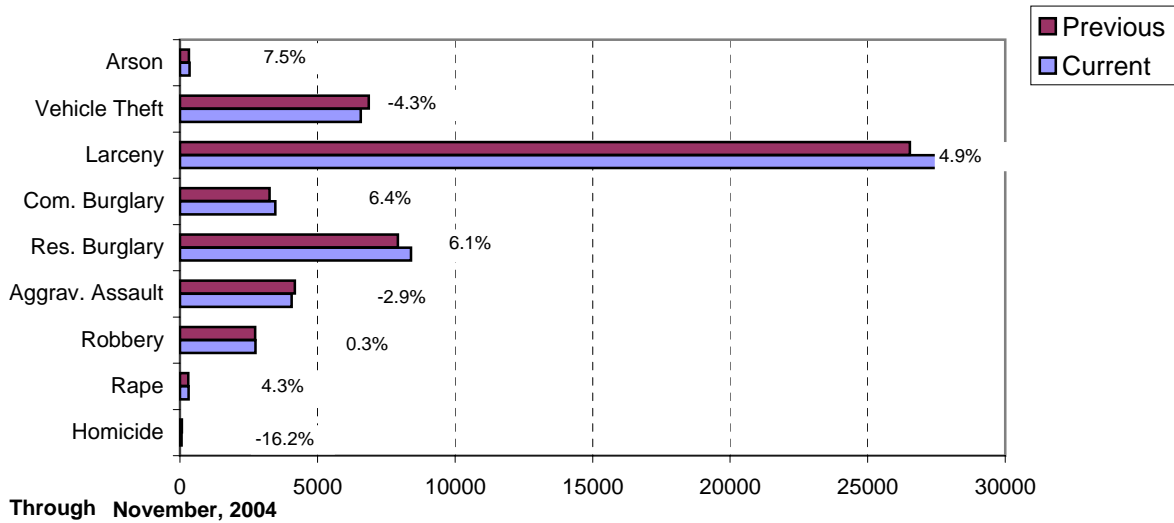


Index Offenses Year-to-Date Cumulative Totals Charlotte-Mecklenburg Police Department: 2002-2003

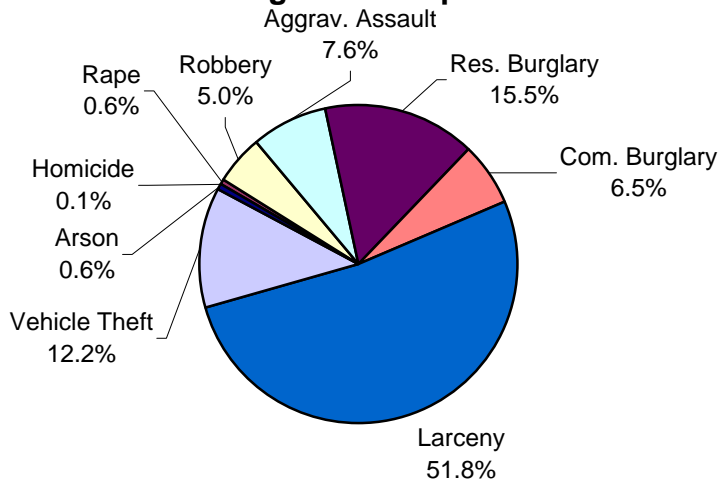


Through November, 2004

Index Offenses in Current and Previous 12 Months Charlotte-Mecklenburg Police Department: 2003-2004

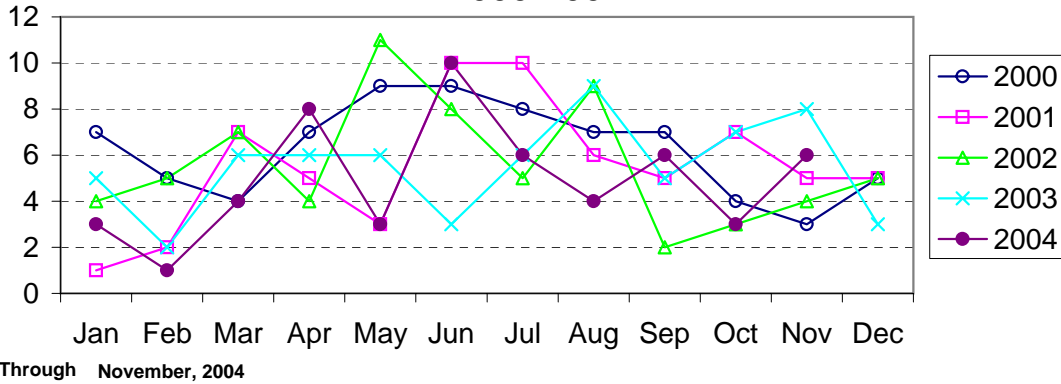


Year-to-Date Index Offenses by Type Charlotte-Mecklenburg Police Department: 2004

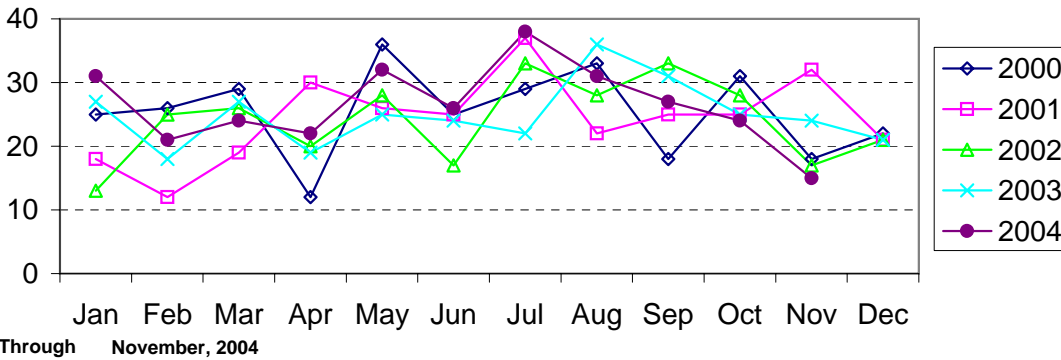


Through November,

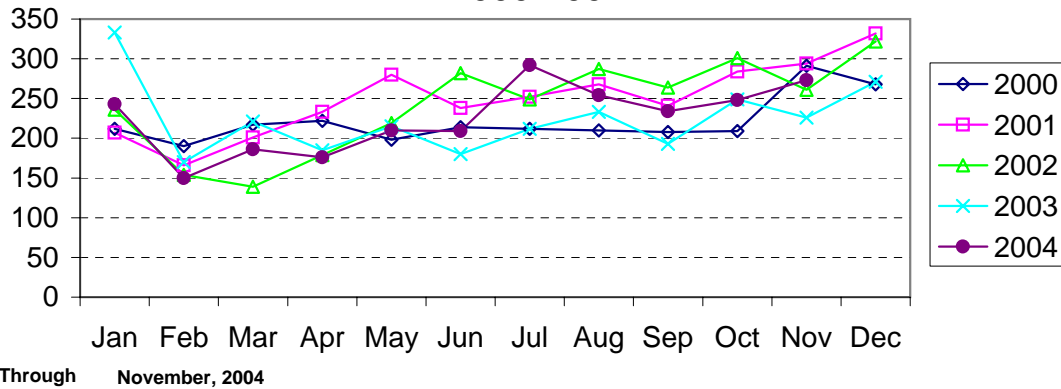
Homicide Reported by Month Charlotte-Mecklenburg Police Department: 2000-2004



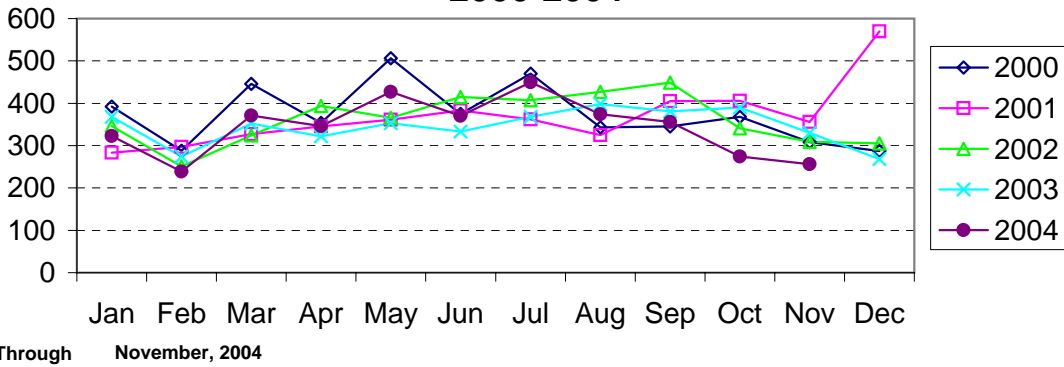
Rape Reported by Month Charlotte-Mecklenburg Police Department: 2000-2004



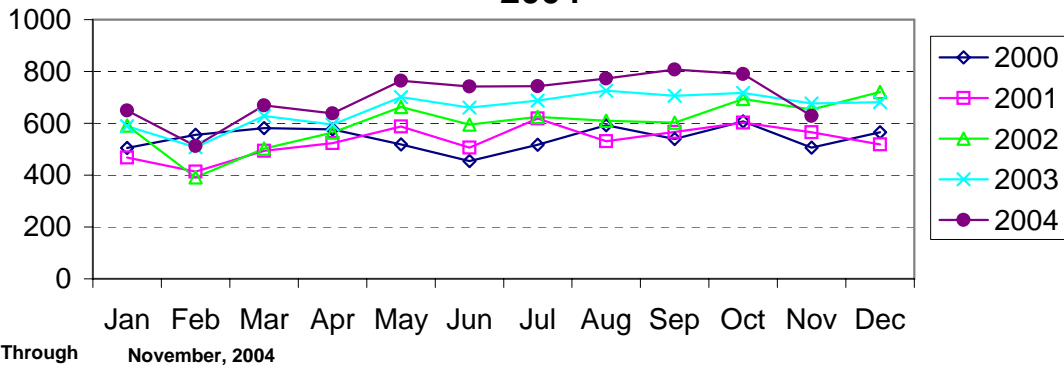
Robbery Reported by Month Charlotte-Mecklenburg Police Department: 2000-2004



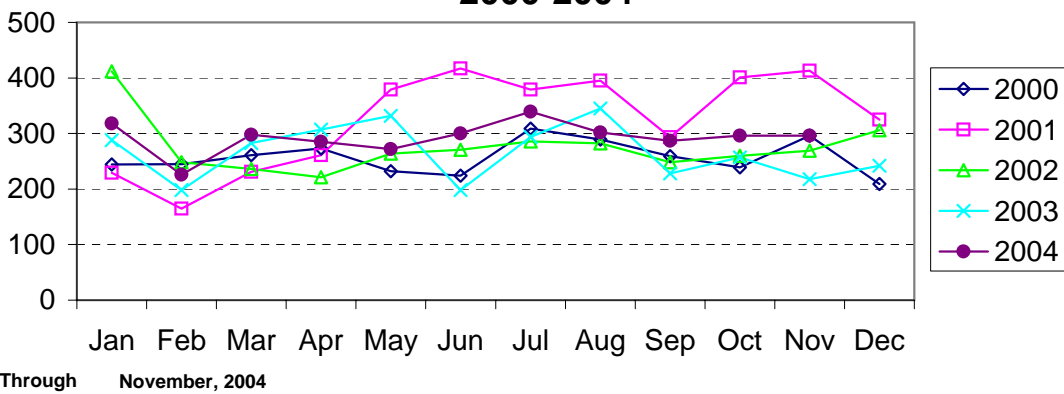
**Aggravated Assault Reported by Month
Charlotte-Mecklenburg Police Department:
2000-2004**



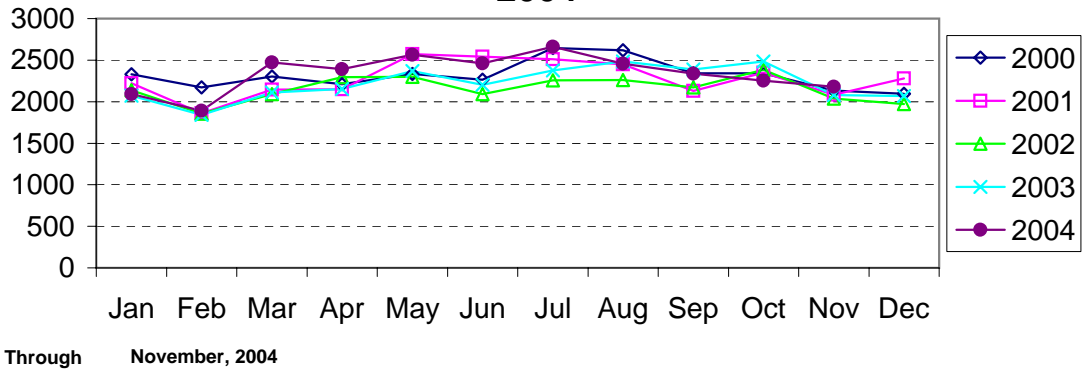
**Residential Burglary Reported by Month
Charlotte-Mecklenburg Police Department: 2000-
2004**



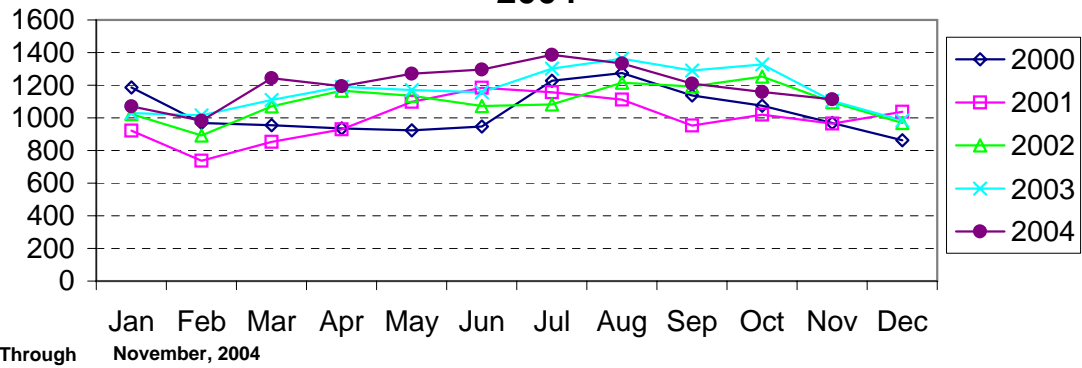
**Commercial Burglary Reported by Month
Charlotte-Mecklenburg Police Department:
2000-2004**



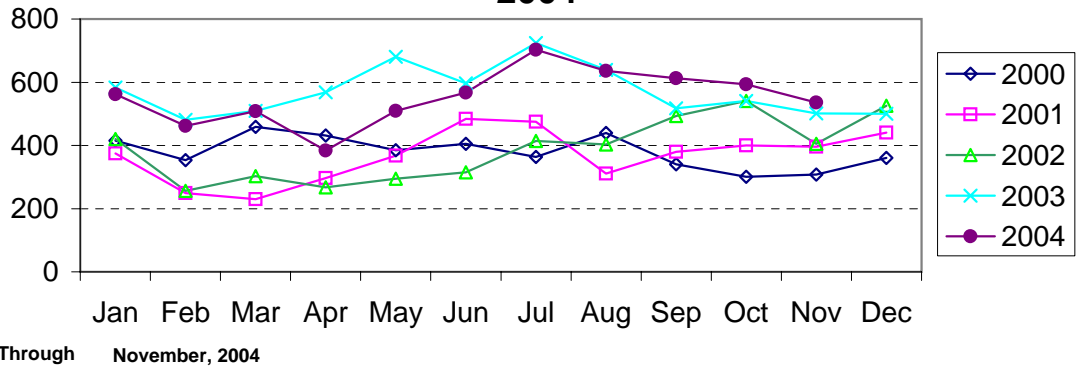
Larceny Reported by Month Charlotte-Mecklenburg Police Department: 2000-2004



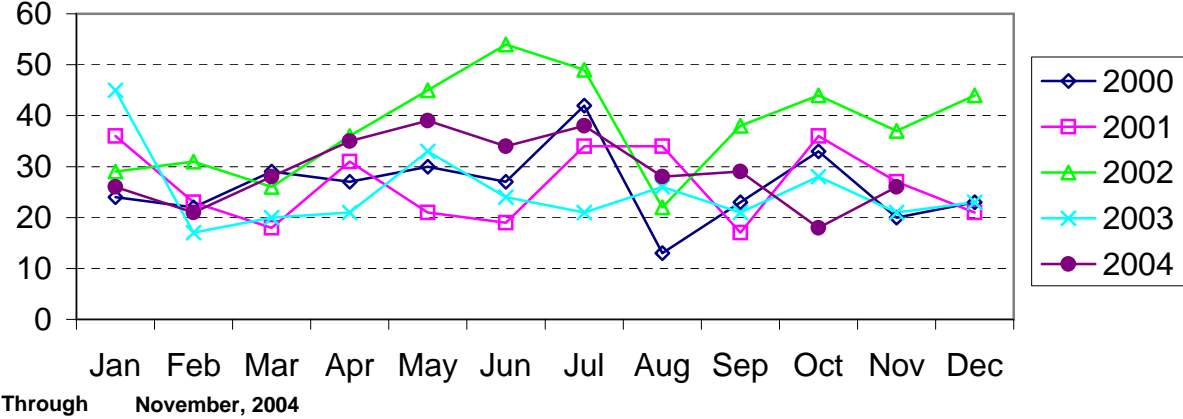
Larceny from Vehicle Reported by Month Charlotte-Mecklenburg Police Department: 2000-2004



Vehicle Theft Reported by Month Charlotte-Mecklenburg Police Department: 2000-2004



Arson Reported by Month Charlotte-Mecklenburg Police Department: 2000-2004



Index Offenses Reported by Division and Service Area of Occurrence									
West Service Area: Jan-Nov, 2003-2004									
INDEX_CATEGORIES	Westover (A2)			Freedom (A3)			West Service Area		
	2003	2004	% Change	2003	2004	% Change	2003	2004	% Change
MURDER & NON-NEGLIGENT MANSLAUGHTER	6	1	-83.3%	10	5	-50.0%	16	6	-62.5%
RAPE	21	24	14.3%	41	29	-29.3%	62	53	-14.5%
ACTUAL	20	24	20.0%	35	28	-20.0%	55	52	-5.5%
ATTEMPTED	1	0	-100.0%	6	1	-83.3%	7	1	-85.7%
ROBBERY	206	192	-6.8%	232	270	16.4%	438	462	5.5%
ARMED	157	146	-7.0%	184	203	10.3%	341	349	2.3%
STRONG-ARM	49	46	-6.1%	48	67	39.6%	97	113	16.5%
AGGRAVATED ASSAULT	376	319	-15.2%	480	442	-7.9%	856	761	-11.1%
BURGLARY	786	827	5.2%	1271	1498	17.9%	2057	2325	13.0%
RESIDENTIAL	549	566	3.1%	871	1016	16.6%	1420	1582	11.4%
COMMERCIAL	237	261	10.1%	400	482	20.5%	637	743	16.6%
LARCENY	1329	1659	24.8%	2183	2402	10.0%	3512	4061	15.6%
FROM AUTO	682	862	26.4%	1069	1130	5.7%	1751	1992	13.8%
BICYCLE	8	11	37.5%	14	15	7.1%	22	26	18.2%
SHOPLIFTING	132	122	-7.6%	193	240	24.4%	325	362	11.4%
OTHERS	507	664	31.0%	907	1017	12.1%	1414	1681	18.9%
VEHICLE THEFT	424	435	2.6%	744	613	-17.6%	1168	1048	-10.3%
ARSON	20	26	30.0%	33	34	3.0%	53	60	13.2%
TOTALS	3168	3483	9.9%	4994	5293	6.0%	8162	8776	7.5%
VIOLENT	609	536	-12.0%	763	746	-2.2%	1372	1282	-6.6%
PROPERTY	2559	2947	15.2%	4231	4547	7.5%	6790	7494	10.4%

Index Offenses Reported by Division and Service Area of Occurrence									
Southeast Service Area: Jan-Nov, 2003-2004									
INDEX_CATEGORIES	Providence (B1)			Independence (B3)			Southeast Service Area		
	2003	2004	% Change	2003	2004	% Change	2003	2004	% Change
MURDER & NON-NEGLIGENT MANSLAUGHTER	0	3	NA	5	5	0.0%	5	8	60.0%
RAPE	16	13	-18.8%	26	23	-11.5%	42	36	-14.3%
ACTUAL	15	12	-20.0%	23	21	-8.7%	38	33	-13.2%
ATTEMPTED	1	1	0.0%	3	2	-33.3%	4	3	-25.0%
ROBBERY	110	120	9.1%	192	213	10.9%	302	333	10.3%
ARMED	87	86	-1.1%	159	159	0.0%	246	245	-0.4%
STRONG-ARM	23	34	47.8%	34	54	58.8%	57	88	54.4%
AGGRAVATED ASSAULT	185	152	-17.8%	287	306	6.6%	472	458	-3.0%
BURGLARY	776	749	-3.5%	911	994	9.1%	1687	1743	3.3%
RESIDENTIAL	491	461	-6.1%	690	782	13.3%	1181	1243	5.2%
COMMERCIAL	285	288	1.1%	221	212	-4.1%	506	500	-1.2%
LARCENY	1642	1811	10.3%	2573	2080	-19.2%	4215	3891	-7.7%
FROM AUTO	776	837	7.9%	1542	1157	-25.0%	2318	1994	-14.0%
BICYCLE	14	18	28.6%	38	20	-47.4%	52	38	-26.9%
SHOPLIFTING	177	181	2.3%	218	171	-21.6%	395	352	-10.9%
OTHERS	675	775	14.8%	775	732	-5.5%	1450	1507	3.9%
VEHICLE THEFT	313	366	16.9%	656	610	-7.0%	969	976	0.7%
ARSON	11	14	27.3%	30	31	3.3%	41	45	9.8%
TOTALS	3053	3228	5.7%	4680	4262	-8.9%	7733	7490	-3.1%
VIOLENT	311	288	-7.4%	510	547	7.3%	821	835	1.7%
PROPERTY	2742	2940	7.2%	4170	3715	-10.9%	6912	6655	-3.7%

The data in the district breakdowns does not include a small number of offenses in which the location of the offense was unknown or was entered without a valid tract assignment. Districts are not equal in geographic size, demographics, zoning/development, and other factors that influence the rate of crimes committed in an area. Therefore, the comparison of raw offense totals across districts is not advisable.

Index Offenses Reported by Division and Service Area of Occurrence									
Northeast Service Area: Jan-Nov, 2003-2004									
INDEX_CATEGORIES	North (C1)			Hickory Grove (C3)			Northeast Service Area		
	2003	2004	% Change	2003	2004	% Change	2003	2004	% Change
MURDER & NON-NEGLIGENT MANSLAUGHTER	5	6	20.0%	7	3	-57.1%	12	9	-25.0%
RAPE	29	38	31.0%	26	34	30.8%	55	72	30.9%
ACTUAL	26	36	38.5%	20	29	45.0%	46	65	41.3%
ATTEMPTED	3	2	-33.3%	6	5	-16.7%	9	7	-22.2%
ROBBERY	179	236	31.8%	238	215	-9.7%	417	451	8.2%
ARMED	143	185	29.4%	187	178	-4.8%	330	363	10.0%
STRONG-ARM	36	51	41.7%	51	37	-27.5%	87	88	1.1%
AGGRAVATED ASSAULT	313	325	3.8%	396	400	1.0%	709	725	2.3%
BURGLARY	1184	1467	23.9%	1038	1093	5.3%	2222	2560	15.2%
RESIDENTIAL	849	1029	21.2%	792	870	9.8%	1641	1899	15.7%
COMMERCIAL	335	438	30.7%	246	219	-11.0%	581	657	13.1%
LARCENY	3643	3857	5.9%	2143	1948	-9.1%	5786	5805	0.3%
FROM AUTO	2117	2185	3.2%	1151	975	-15.3%	3268	3160	-3.3%
BICYCLE	11	20	81.8%	26	42	61.5%	37	62	67.6%
SHOPLIFTING	314	330	5.1%	215	136	-36.7%	529	466	-11.9%
OTHERS	1201	1322	10.1%	751	795	5.9%	1952	2117	8.5%
VEHICLE THEFT	736	786	6.8%	760	623	-18.0%	1496	1409	-5.8%
ARSON	35	43	22.9%	35	40	14.3%	70	83	18.6%
TOTALS	6124	6758	10.4%	4643	4356	-6.2%	10767	11114	3.2%
VIOLENT	526	605	15.0%	667	652	-2.2%	1193	1257	5.4%
PROPERTY	5598	6153	9.9%	3976	3704	-6.8%	9574	9857	3.0%

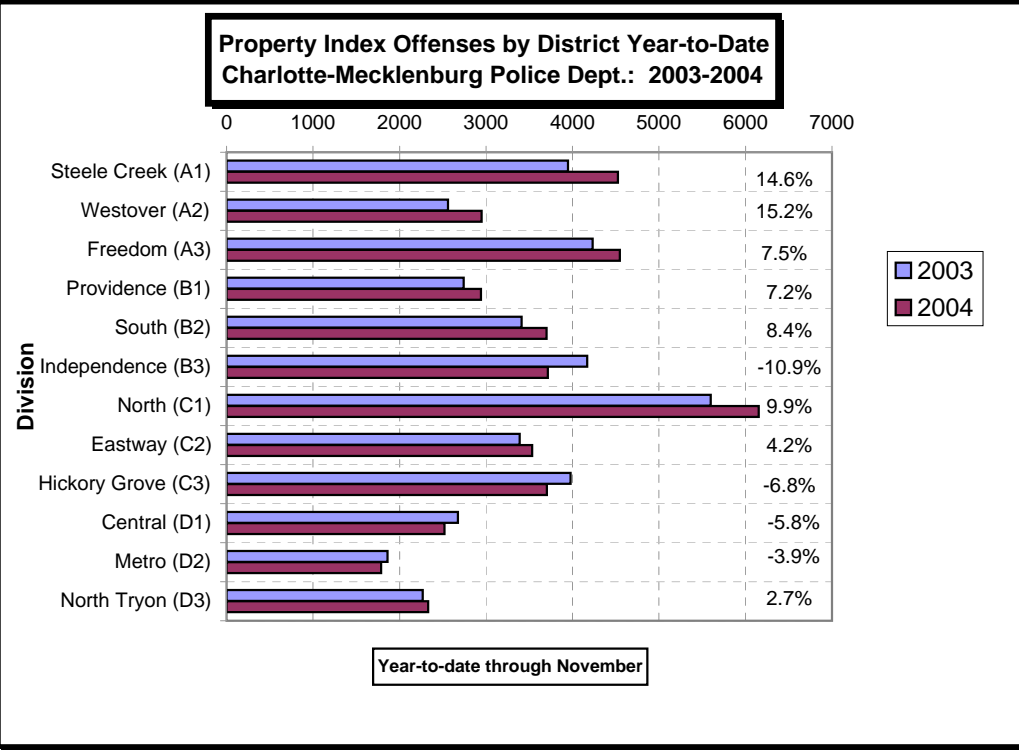
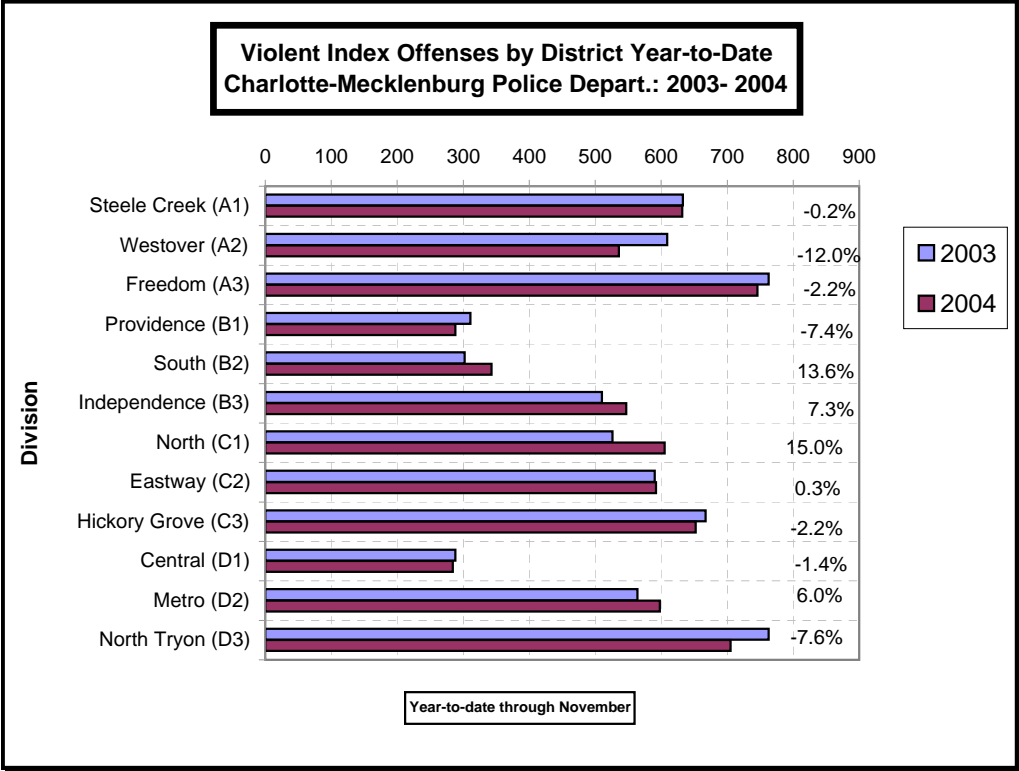
Index Offenses Reported by Division and Service Area of Occurrence									
Central Service Area: Jan-Nov, 2003-2004									
INDEX_CATEGORIES	Central (D1)			Metro (D2)			Central Service Area		
	2003	2004	% Change	2003	2004	% Change	2003	2004	% Change
MURDER & NON-NEGLIGENT MANSLAUGHTER	2	1	-50.0%	6	7	16.7%	8	8	0.0%
RAPE	15	18	20.0%	19	23	21.1%	34	41	20.6%
ACTUAL	14	17	21.4%	15	22	46.7%	29	39	34.5%
ATTEMPTED	1	1	0.0%	4	1	-75.0%	5	2	-60.0%
ROBBERY	110	120	9.1%	165	198	20.0%	275	318	15.6%
ARMED	67	70	4.5%	129	154	19.4%	196	224	14.3%
STRONG-ARM	43	50	16.3%	36	44	22.2%	79	94	19.0%
AGGRAVATED ASSAULT	161	145	-9.9%	374	370	-1.1%	535	515	-3.7%
BURGLARY	361	362	0.3%	492	589	19.7%	853	951	11.5%
RESIDENTIAL	197	157	-20.3%	369	433	17.3%	566	590	4.2%
COMMERCIAL	164	205	25.0%	123	156	26.8%	287	361	25.8%
LARCENY	1877	1857	-1.1%	980	886	-9.6%	2857	2743	-4.0%
FROM AUTO	1104	1011	-8.4%	558	399	-28.5%	1662	1410	-15.2%
BICYCLE	9	20	122.2%	14	8	-42.9%	23	28	21.7%
SHOPLIFTING	64	65	1.6%	40	59	47.5%	104	124	19.2%
OTHERS	700	762	8.9%	368	421	14.4%	1068	1183	10.8%
VEHICLE THEFT	423	294	-30.5%	373	298	-20.1%	796	592	-25.6%
ARSON	13	5	-61.5%	16	15	-6.3%	29	20	-31.0%
TOTALS	2962	2802	-5.4%	2425	2386	-1.6%	5387	5188	-3.7%
VIOLENT	288	284	-1.4%	564	598	6.0%	852	882	3.5%
PROPERTY	2674	2518	-5.8%	1861	1788	-3.9%	4535	4306	-5.0%

The data in the district breakdowns does not include a small number of offenses in which the location of the offense was unknown or was entered without a valid tract assignment. Districts are not equal in geographic size, demographics, zoning/development, and other factors that influence the rate of crimes committed in an area. Therefore, the comparison of raw offense totals across districts is not advisable.

Index Offenses Reported by Division and Service Area of Occurrence									
East Service Area: Jan-Nov, 2003-2004									
INDEX_CATEGORIES	Eastway (C2)			North Tryon (D3)			East Service Area		
	2003	2004	% Change	2003	2004	% Change	2003	2004	% Change
MURDER & NON-NEGLIGENT MANSLAUGHTER	3	7	133.3%	7	8	14.3%	10	15	50.0%
RAPE	18	20	11.1%	17	18	5.9%	35	38	8.6%
ACTUAL	17	16	-5.9%	17	14	-17.6%	34	30	-11.8%
ATTEMPTED	1	4	300.0%	0	4	NA	1	8	700.0%
ROBBERY	300	276	-8.0%	297	267	-10.1%	597	543	-9.0%
ARMED	232	203	-12.5%	244	194	-20.5%	476	397	-16.6%
STRONG-ARM	68	73	7.4%	53	73	37.7%	121	146	20.7%
AGGRAVATED ASSAULT	269	289	7.4%	442	412	-6.8%	711	701	-1.4%
BURGLARY	854	917	7.4%	703	683	-2.8%	1557	1600	2.8%
RESIDENTIAL	631	680	7.8%	463	454	-1.9%	1094	1134	3.7%
COMMERCIAL	223	237	6.3%	240	229	-4.6%	463	466	0.6%
LARCENY	2038	2087	2.4%	1087	1214	11.7%	3125	3301	5.6%
FROM AUTO	890	750	-15.7%	570	584	2.5%	1460	1334	-8.6%
BICYCLE	15	28	86.7%	11	9	-18.2%	26	37	42.3%
SHOPLIFTING	512	692	35.2%	74	96	29.7%	586	788	34.5%
OTHERS	621	617	-0.6%	432	525	21.5%	1053	1142	8.5%
VEHICLE THEFT	482	500	3.7%	470	423	-10.0%	952	923	-3.0%
ARSON	16	29	81.3%	9	11	22.2%	25	40	60.0%
TOTALS	3980	4125	3.6%	3032	3036	0.1%	7012	7161	2.1%
VIOLENT	590	592	0.3%	763	705	-7.6%	1353	1297	-4.1%
PROPERTY	3390	3533	4.2%	2269	2331	2.7%	5659	5864	3.6%

Index Offenses Reported by Division and Service Area of Occurrence									
South Service Area: Jan-Nov, 2003-2004									
INDEX_CATEGORIES	Steele Creek (A1)			South (B2)			South Service Area		
	2003	2004	% Change	2003	2004	% Change	2003	2004	% Change
MURDER & NON-NEGLIGENT MANSLAUGHTER	8	8	0.0%	4	1	-75.0%	12	9	-25.0%
RAPE	25	23	-8.0%	21	16	-23.8%	46	39	-15.2%
ACTUAL	21	20	-4.8%	18	13	-27.8%	39	33	-15.4%
ATTEMPTED	4	3	-25.0%	3	3	0.0%	7	6	-14.3%
ROBBERY	246	219	-11.0%	112	123	9.8%	358	342	-4.5%
ARMED	190	171	-10.0%	85	91	7.1%	275	262	-4.7%
STRONG-ARM	46	48	4.3%	27	32	18.5%	73	80	9.6%
AGGRAVATED ASSAULT	354	382	7.9%	165	203	23.0%	519	585	12.7%
BURGLARY	805	883	9.7%	852	798	-6.3%	1657	1681	1.4%
RESIDENTIAL	555	543	-2.2%	673	625	-7.1%	1228	1168	-4.9%
COMMERCIAL	250	340	36.0%	179	173	-3.4%	429	513	19.6%
LARCENY	2576	3031	17.7%	2192	2426	10.7%	4768	5457	14.5%
FROM AUTO	1227	1723	40.4%	1216	1381	13.6%	2443	3104	27.1%
BICYCLE	19	23	21.1%	16	13	-18.8%	35	36	2.9%
SHOPLIFTING	410	365	-11.0%	149	145	-2.7%	559	510	-8.8%
OTHERS	920	920	0.0%	811	887	9.4%	1731	1807	4.4%
VEHICLE THEFT	539	569	5.6%	343	445	29.7%	882	1014	15.0%
ARSON	27	41	51.9%	23	29	26.1%	50	70	40.0%
TOTALS	4580	5156	12.6%	3712	4041	8.9%	8292	9197	10.9%
VIOLENT	633	632	-0.2%	302	343	13.6%	935	975	4.3%
PROPERTY	3947	4524	14.6%	3410	3698	8.4%	7357	8222	11.8%

The data in the district breakdowns does not include a small number of offenses in which the location of the offense was unknown or was entered without a valid tract assignment. Districts are not equal in geographic size, demographics, zoning/development, and other factors that influence the rate of crimes committed in an area. Therefore, the comparison of raw offense totals across districts is not advisable.



The data in the district breakdowns does not include a small number of offenses in which the location of the offense was unknown or was entered without a valid tract assignment. Districts are not equal in geographic size, demographics, zoning/development, and other factors that influence the rate of crimes committed in an area. Therefore, the comparison of raw offense totals across districts is not advisable.

Arrests by Charlotte-Mecklenburg Police Department
Year-To-Date: 2003-2004
(Through November)

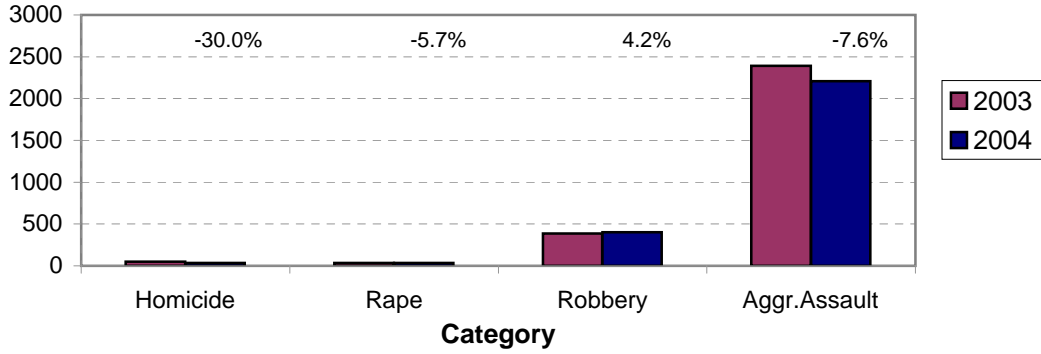
CATEGORY	ADULTS (AGE 18 & OLDER):			JUVENILES (UNDER 18):			TOTAL ARRESTS:		
	2003 Y-T-D	2004 Y-T-D	% CHANGE	2003 Y-T-D	2004 Y-T-D	% CHANGE	2003 Y-T-D	2004 Y-T-D	% CHANGE
Murder/Non-Negligent Manslaughter	43	33	-23.3%	7	2	-71.4%	50	35	-30.0%
Negligent & Vehicular Manslaughter	1	4	300.0%	0	0	NA	1	4	300.0%
Rape	29	31	6.9%	6	2	-66.7%	35	33	-5.7%
Robbery	275	269	-2.2%	110	132	20.0%	385	401	4.2%
Aggravated Assault	2050	1917	-6.5%	340	292	-14.1%	2390	2209	-7.6%
Burglary	457	538	17.7%	206	192	-6.8%	663	730	10.1%
Larceny	1388	1447	4.3%	603	550	-8.8%	1991	1997	0.3%
Vehicle Theft	143	72	-49.7%	345	142	-58.8%	488	214	-56.1%
Non-Aggravated Assault	1588	1687	6.2%	827	740	-10.5%	2415	2427	0.5%
Arson	18	15	-16.7%	26	31	19.2%	44	46	4.5%
Forgery/Counterfiet	119	132	10.9%	4	2	-50.0%	123	134	8.9%
Fraud	525	503	-4.2%	8	9	12.5%	533	512	-3.9%
Embezzlement	98	82	-16.3%	4	13	225.0%	102	95	-6.9%
Stolen Property	488	471	-3.5%	141	93	-34.0%	629	564	-10.3%
Vandalism	222	198	-10.8%	189	185	-2.1%	411	383	-6.8%
Weapons	438	403	-8.0%	65	59	-9.2%	503	462	-8.2%
Prostitution	322	341	5.9%	3	8	166.7%	325	349	7.4%
Sex Offenses	213	183	-14.1%	41	18	-56.1%	254	201	-20.9%
Drugs	2842	2492	-12.3%	280	238	-15.0%	3122	2730	-12.6%
Gambling	25	14	-44.0%	0	0	NA	25	14	-44.0%
Offenses vs. Family	10	5	-50.0%	0	1	NA	10	6	-40.0%
DUI	1915	1788	-6.6%	10	11	10.0%	1925	1799	-6.5%
Liquor	177	199	12.4%	14	9	-35.7%	191	208	8.9%
Disorder.Conduct	536	529	-1.3%	268	268	0.0%	804	797	-0.9%
Other Non-Traffic	6976	7361	5.5%	745	698	-6.3%	7721	8059	4.4%
VIOLENT INDEX¹	2397	2250	-6.1%	463	428	-7.6%	2860	2678	-6.4%
PROPERTY INDEX²	2006	2072	3.3%	1180	915	-22.5%	3186	2987	-6.2%
INDEX SUBTOTAL	4403	4322	-1.8%	1643	1343	-18.3%	6046	5665	-6.3%
PART 2 SUBTOTAL³	16495	16392	-0.6%	2599	2352	-9.5%	19094	18744	-1.8%
TOTAL	20898	20714	-0.9%	4242	3695	-12.9%	25140	24409	-2.9%

¹Violent Index includes murder and non-negligent manslaughter, rape, robbery, and aggravated assault.

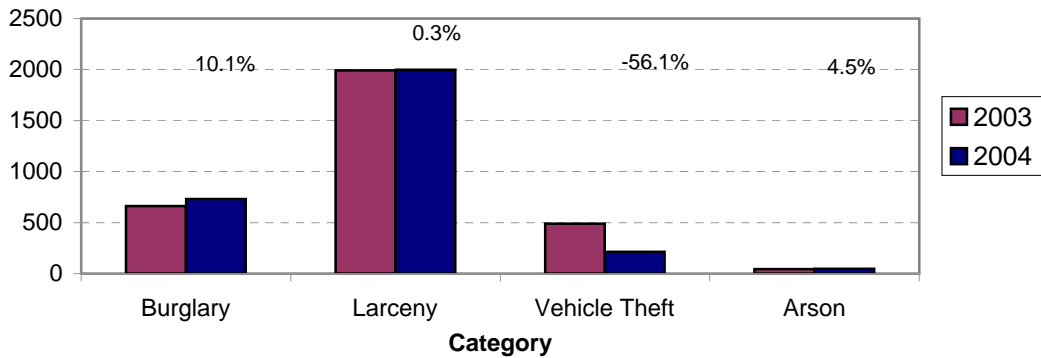
²Property Index includes burglary, larceny, vehicle theft, and arson.

³Part 2 crimes include non-traffic crimes not counted in the Index totals.

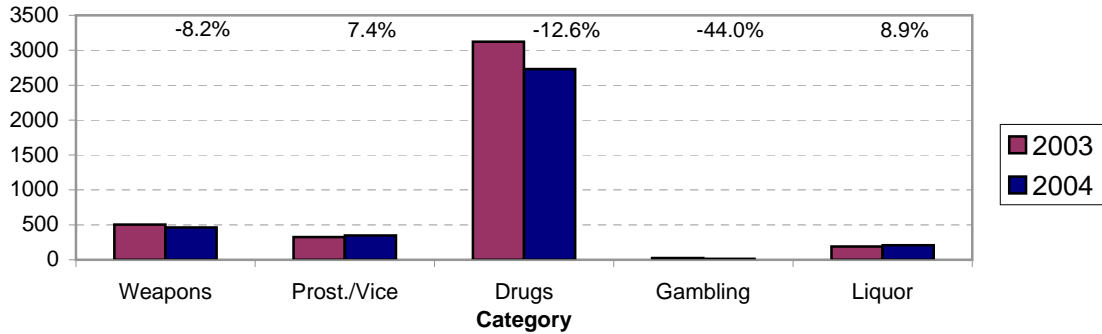
**Violent Index Arrests Year-to-Date
Charlotte-Mecklenburg Police Department: 2003-2004
(Through November)**



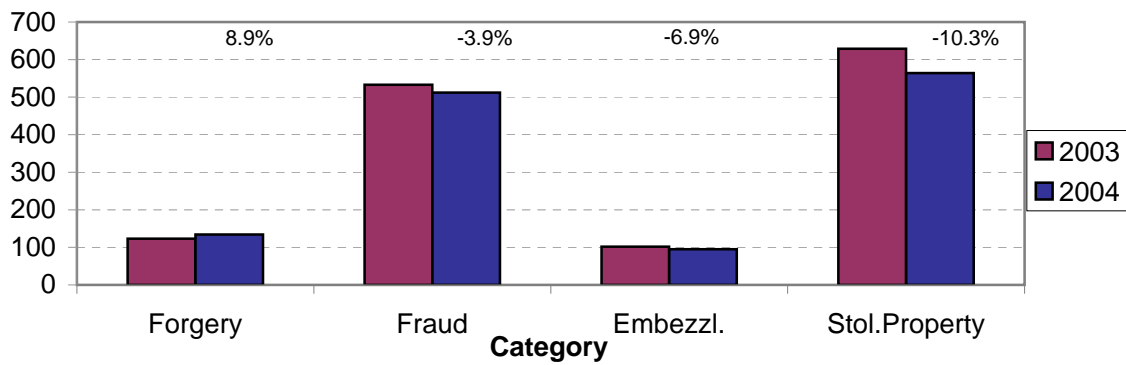
**Property Index Arrests Year-to-Date
Charlotte-Mecklenburg Police Department: 2003-2004
(Through November)**



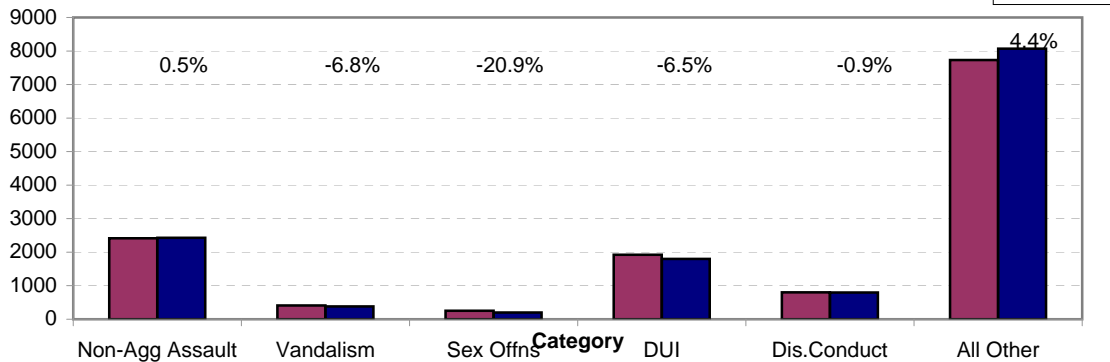
**Arrests for Vice/CCW/Drugs/Etc. Year-to-Date
Charlotte-Mecklenburg Police Department: 2003 - 2004
(Through November)**



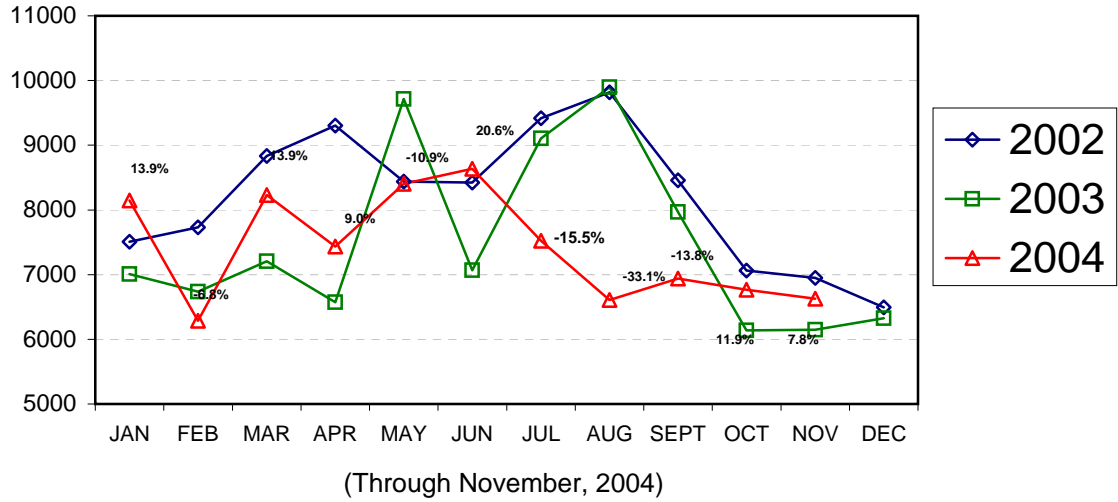
**Arrests for Property/White Collar Crime Year-to-Date
Charlotte-Mecklenburg Police Department: 2003 - 2004
(Through November)**



**Arrests for Other Categories Year-to-Date
Charlotte-Mecklenburg Police Department: 2003 - 2004
(Through November)**

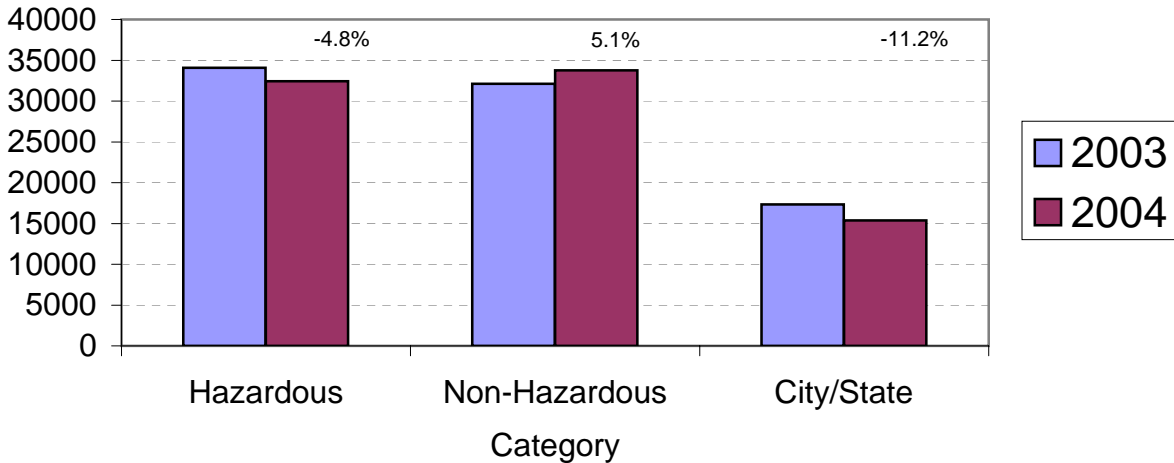


Total Citation Enforcement by Month Charlotte-Mecklenburg Police Dept.: 2002-2004

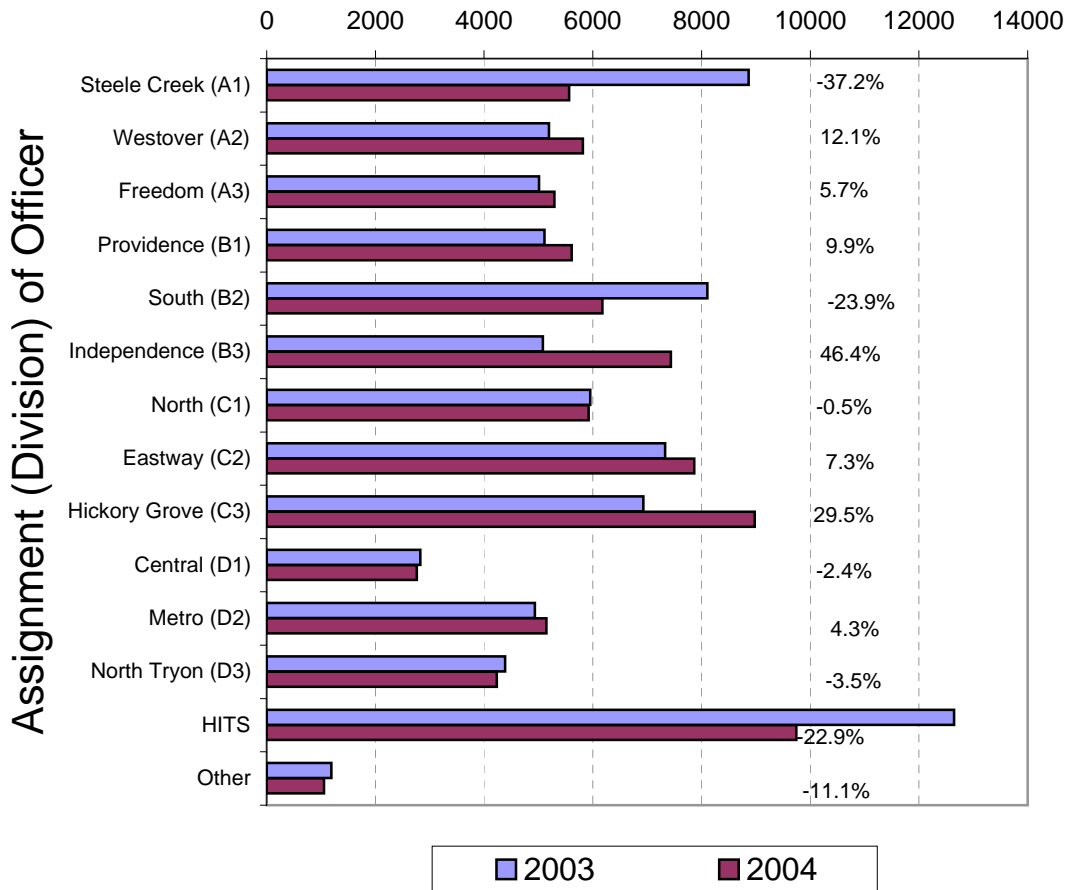


(Includes Hazardous, Non-Hazardous, and City/State Citations)

CMPD Citation Enforcement by Category Year-to-Date, 2003 - 2004 (Through November, 2004)



**Citations Issued Year-to-Date by CMPD Divisions
2003 - 2004
(Through November, 2004)**



Note: 2003 and 2004 data for HITS and Other was adjusted in April, 2004.

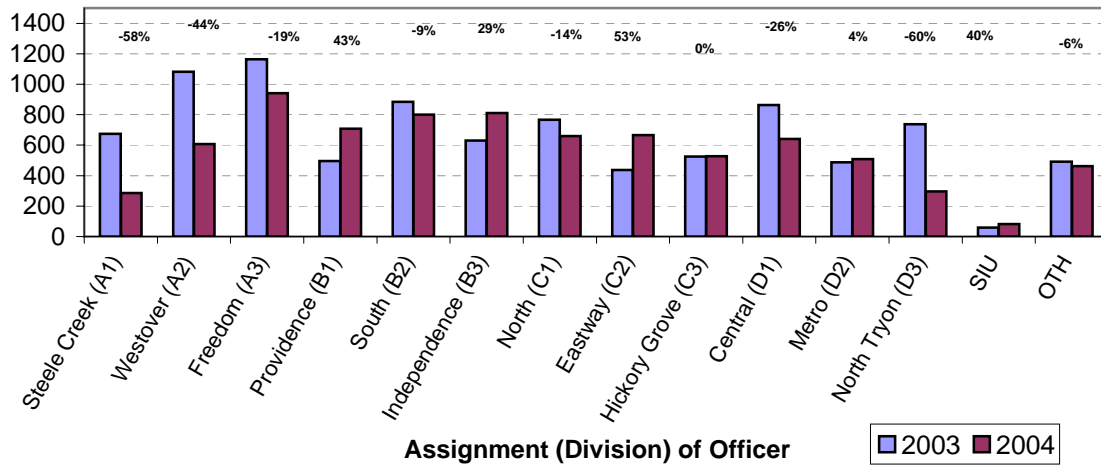
**Citations Issued by the Charlotte Mecklenburg Police Officers Year-to-Date
(Through November, 2004)**

Total Citations	2003	2004	% Change
Hazardous	34,087	32,440	-4.8%
Non-Hazardous	32,135	33,777	5.1%
Other City/State Statute/Ordinance	17,333	15,387	-11.2%
Total	83,555	81,604	-2.3%

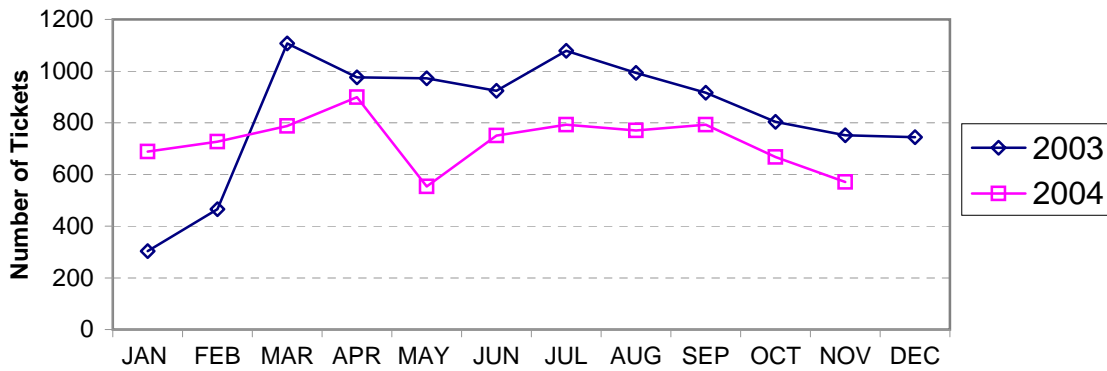
"Safe Speed" Program: Initiated August, 2004 (Through November, 2004)

Total Citations 7413
(Citations issued through the "Safe Speed" program are not included in the CMPD citation totals used in the summary chart above and in the other citation graphs.)

**Warning Tickets Issued by CMPD Division
Year-to-Date, 2003 - 2004
Through November,**



**Total Warning Tickets Issued by CMPD
By Month: 2003 - 2004**



**Warning Tickets Issued by CMPD Year-to-Date
Through November, 2004**

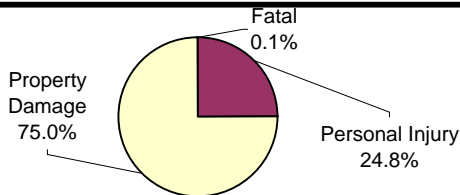
	2003	2004	% Change
Total Warning Tickets	9293	7998	-13.9%

Traffic Collison Reports
Charlotte-Mecklenburg Police Department
Year-to-Date: 2003-2004
(Through November)

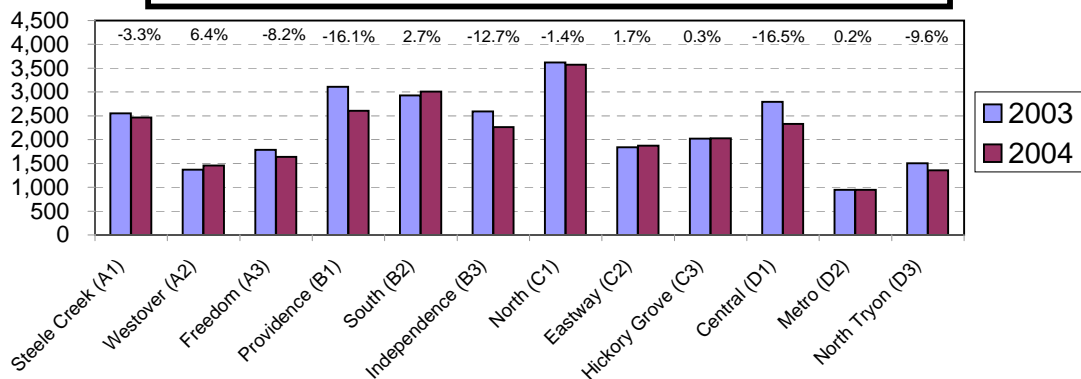
<u>Type</u>	<u>2003</u>	<u>2004</u>	<u>% Change</u>
Fatal Collisions	50	35	-30.0%
Vehicle Occupants Killed	49	32	-34.7%
Pedestrians Killed	5	5	0.0%
Personal Injury Collisions	6812	6331	-7.2%
Property Damage Collisions	20334	19247	-5.3%
Total Collisions	27196	25613	-5.8%

* The number of fatal collisions and the number of persons killed (fatalities) in those incidents is taken from the HITS file. Their records are updated for deaths that occur after the initial report is filed.

Traffic Collisions Reported by Type
Charlotte-Mecklenburg Police Department:
2004 Year-to-Date
(Through November)



Traffic Collisions Reported by Charlotte-Mecklenburg Police Dept.
Year-to-Date By Location (Division) : 2003 -2004
(Through November)



Uniform Crime Reporting Procedures:

The Charlotte-Mecklenburg Police Department reports offense and arrest statistics in accordance with standard Uniform Crime Reporting (UCR) guidelines. UCR policy states that any adjustments to previous months can be made on the current month's report:

...In tabulating crime counts, an agency may find that offense totals for past months require adjustments due to developments in the investigation or other handling of the matter. It may be necessary to adjust totals reported to UCR for the past month or prior months. Needed adjustments can be made on the current month's report and do not affect the reliability of the figures in that such adjustments tend to equalize each other from month to month over a period of time.

- *Uniform Crime Reporting Handbook*, FBI, 1984, p. 42-43

We are required to report crime monthly to the UCR program, and we do therefore make an effort to process monthly changes in a timely manner. However, occasionally due to the review and processing required for reclassifying, unfounding or clearing cases, the current month's totals may reflect the processing of a backlog of these changes from previous months.

Users of the data are cautioned that conclusions about substantial changes in crime trends or in clearance rates based on only a single month's data or trend may reflect some of these adjustments. For this reason, in addition to the monthly and year-to-date trends on Page 1, the monthly report routinely includes a comparison for the previous 12 months (p. 4), as well as graphs that provide seasonal/monthly comparisons over a five-year period (p. 5-8).

This report was compiled by the Research, Planning, and Analysis Division.

We make an effort to present the most accurate information available at the time this report is published. Please notify the Research, Planning, and Analysis office if you have any questions about the data in this report or about an error that was missed in proofing the report.

The division names adopted in 2003 are used in this report. For ease of use, they also include the old district designations in parentheses.