



**CHARLOTTE-MECKLENBURG POLICE DEPARTMENT
MONTHLY SUMMARY REPORT
AUGUST, 2004**

**Darrel Stephens
Chief of Police**

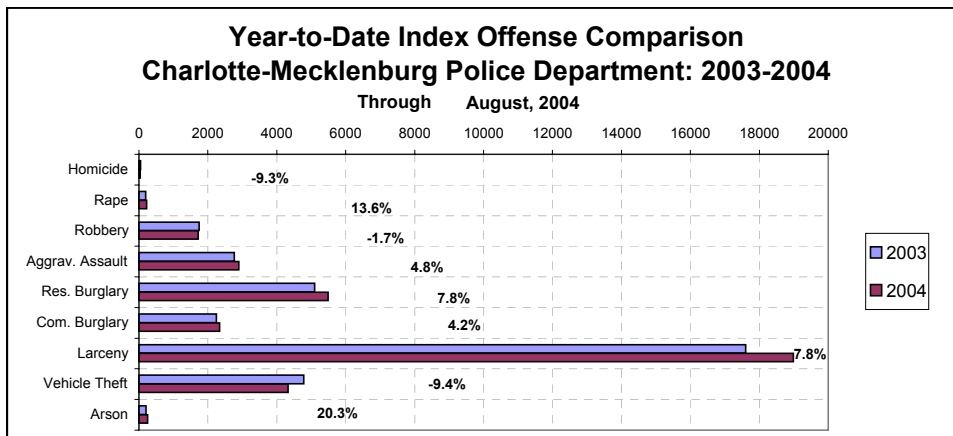
INDEX OFFENSES REPORTED TO CHARLOTTE-MECKLENBURG POLICE DEPARTMENT

August, 2004 INDEX OFFENSES	# THIS MONTH	% OF ALL INDEX	# LAST MONTH	MONTHLY % CHANGE	SAME MONTH LAST YEAR	MONTHLY % CHANGE	THIS YEAR TO DATE	LAST YEAR TO DATE	ANNUAL % CHANGE
HOMICIDE (MURDER & NON- NEGLIGENT MANSLAUGHTER)	4	0.1%	6	-33.3%	9	-55.6%	39	43	-9.3%
RAPE TOTAL	31	0.6%	38	-18.4%	36	-13.9%	225	198	13.6%
ACTUAL	29	0.6%	34	-14.7%	32	-9.4%	209	175	19.4%
ATTEMPT	2	0.0%	4	-50.0%	4	-50.0%	16	23	-30.4%
ROBBERY TOTAL	254	5.2%	292	-13.0%	233	9.0%	1720	1749	-1.7%
ARMED	211	4.3%	235	-10.2%	186	13.4%	1338	1366	-2.0%
STRONG-ARM	43	0.9%	57	-24.6%	47	-8.5%	382	383	-0.3%
AGGRAVATED ASSAULT TOTAL	374	7.7%	450	-16.9%	398	-6.0%	2900	2768	4.8%
BURGLARY TOTAL	1075	22.1%	1082	-0.6%	1071	0.4%	7830	7340	6.7%
RESIDENTIAL	773	15.9%	743	4.0%	726	6.5%	5490	5095	7.8%
COMMERCIAL	302	6.2%	339	-10.9%	345	-12.5%	2340	2245	4.2%

FORCE	904	18.6%	883	2.4%	843	7.2%	6324	5799	9.1%
NO FORCE	113	2.3%	143	-21.0%	147	-23.1%	1046	1065	-1.8%
ATTEMPT	58	1.2%	56	3.6%	71	-18.3%	460	466	-1.3%
LARCENY TOTAL	2458	50.6%	2662	-7.7%	2485	-1.1%	18991	17609	7.8%
\$200 AND OVER	1181	24.3%	1311	-9.9%	1281	-7.8%	9239	8768	5.4%
\$50 TO \$200	442	9.1%	468	-5.6%	408	8.3%	3449	3149	9.5%
UNDER \$50	835	17.2%	883	-5.4%	796	4.9%	6303	5692	10.7%

FROM AUTO	1334	27.4%	1387	-3.8%	1363	-2.1%	9778	9337	4.7%
BICYCLE	20	0.4%	35	-42.9%	31	-35.5%	160	142	12.7%
SHOPLIFTING	245	5.0%	250	-2.0%	250	-2.0%	1979	1763	12.3%
OTHERS	859	17.7%	990	-13.2%	841	2.1%	7074	6367	11.1%
VEHICLE THEFT TOTAL	636	13.1%	703	-9.5%	639	-0.5%	4331	4781	-9.4%
ARSON TOTAL	28	0.6%	38	-26.3%	26	7.7%	249	207	20.3%
TOTALS	4860	100.0%	5271	-7.8%	4897	-0.8%	36285	34695	4.6%
VIOLENT PROPERTY	663	13.6%	786	-15.6%	676	-1.9%	4884	4758	2.6%
PROPERTY	4197	86.4%	4485	-6.4%	4221	-0.6%	31401	29937	4.9%

NOTE: These totals include offenses reported to the Charlotte-Mecklenburg Police Department in accordance with the Uniform Crime Reporting Program. Totals for homicide do not include cases investigated by the police but classed by UCR guidelines as negligent manslaughter or as "justifiable homicide."

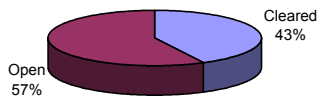


INDEX CLEARANCES REPORTED BY THE CHARLOTTE-MECKLENBURG POLICE DEPARTMENT

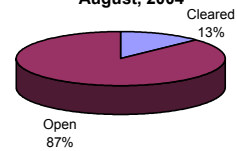
August, 2004 INDEX CLEARANCES	THIS MONTH:		LAST MONTH:		SAME MO. LAST YR:		THIS YEAR TO DATE:		LAST YEAR TO DATE:	
	NO.	%	NO.	%	NO.	%	NO.	%	NO.	%
MURDER & NON-NEGLIGENT MANSLAUGHTER	1	25.0%	2	33.3%	7	77.8%	15	38.5%	26	60.5%
RAPE TOTAL	30	96.8%	1	2.6%	37	102.8%	136	60.4%	154	77.8%
ACTUAL	30	103.4%	0	0.0%	32	100.0%	126	60.3%	135	77.1%
ATTEMPT	0	0.0%	1	25.0%	5	125.0%	10	62.5%	19	82.6%
ROBBERY TOTAL	55	21.7%	19	6.5%	96	41.2%	445	25.9%	403	23.0%
ARMED	45	21.3%	16	6.8%	80	43.0%	335	25.0%	276	20.2%
STRONG-ARM	10	23.3%	3	5.3%	16	34.0%	110	28.8%	127	33.2%
AGGRAVATED ASSAULT TOTAL	260	69.5%	137	30.4%	255	64.1%	1484	51.2%	1607	58.1%
BURGLARY TOTAL	56	5.2%	73	6.7%	206	19.2%	797	10.2%	996	13.6%
RESIDENTIAL	41	5.3%	54	7.3%	141	19.4%	651	11.9%	652	12.8%
COMMERCIAL	15	5.0%	19	5.6%	65	18.8%	146	6.2%	344	15.3%
LARCENY TOTAL	195	7.9%	215	8.1%	408	16.4%	2424	12.8%	2514	14.3%
FROM AUTO	27	2.0%	22	1.6%	55	4.0%	270	2.8%	347	3.7%
BICYCLE	0	0.0%	3	8.6%	2	6.5%	10	6.3%	15	10.6%
SHOPLIFTING	132	53.9%	130	52.0%	169	67.6%	1191	60.2%	1047	59.4%
OTHERS	36	4.2%	60	6.1%	182	21.6%	953	13.5%	1105	17.4%
VEHICLE THEFT TOTAL	74	11.6%	105	14.9%	191	29.9%	760	17.5%	967	20.2%
ARSON TOTAL	5	17.9%	5	13.2%	3	11.5%	64	25.7%	56	27.1%
TOTALS	676	13.9%	557	10.6%	1203	24.6%	6125	16.9%	6723	19.4%
VIOLENT PROPERTY	346	52.2%	159	20.2%	395	58.4%	2080	42.6%	2190	46.0%
	330	7.9%	398	8.9%	808	19.1%	4045	12.9%	4533	15.1%

NOTE: Clearances are reported in accordance with Uniform Crime Report guidelines. Since clearances are not counted until they are entered into the Records system, any delays in processing may result in some clearances being reported in succeeding months.

**Year-to-Date Violent Index Clearance Rate
Charlotte-Mecklenburg Police Department: 2004
August, 2004**

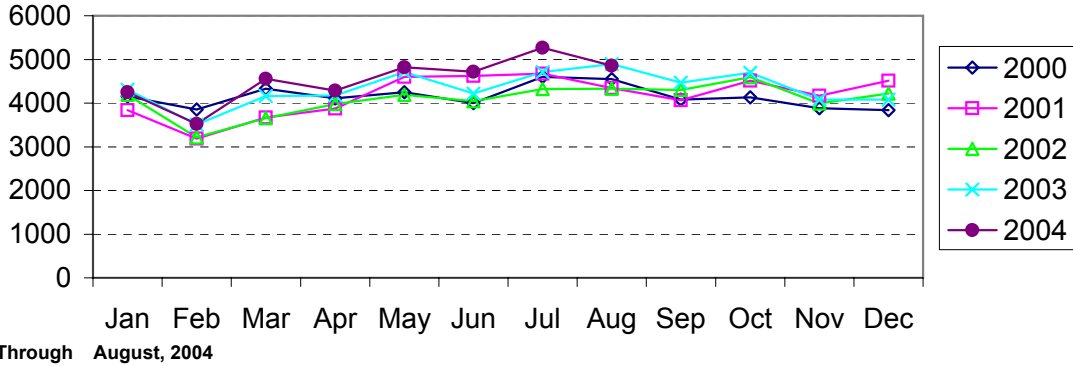


**Year-to-Date Property Index Clearance Rate
Charlotte-Mecklenburg Police Department: 2004
August, 2004**

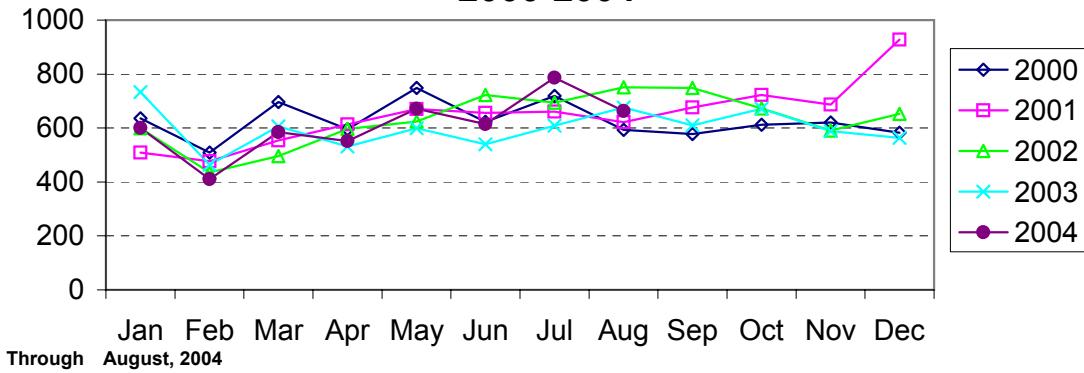


Clearance rates for crime reporting are calculated by dividing the number of crimes cleared during a designated time span by the number of crimes reported in the same period and converting the result to a percentage (multiplying by 100). Since cases from previous reporting periods can be cleared during the designated time span, the rate may be higher than 100%.

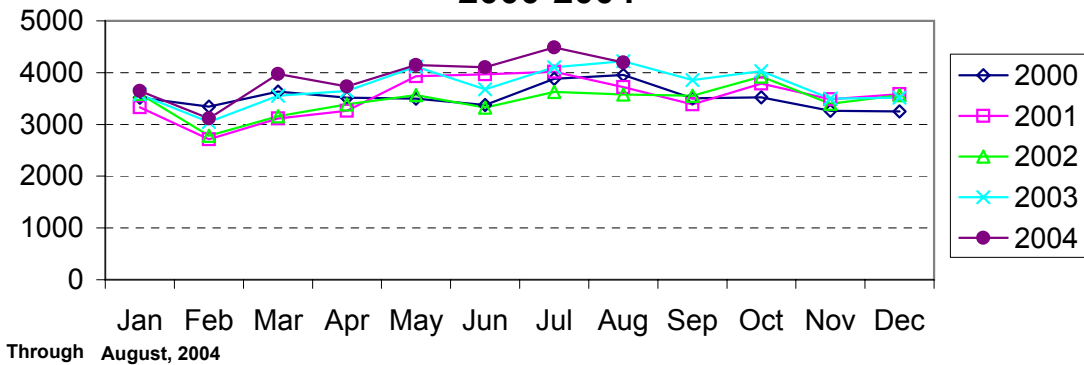
Index Offenses Reported by Month Charlotte-Mecklenburg Police Department: 2000-2004



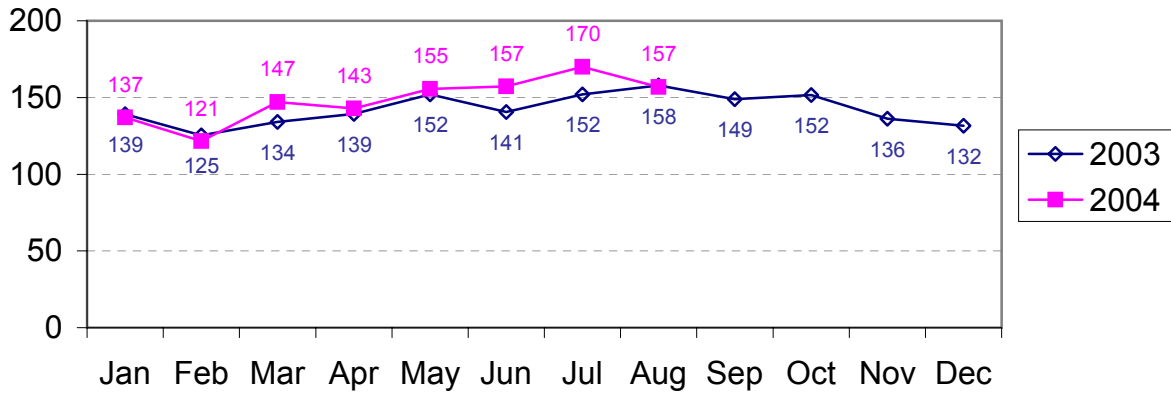
Violent Index Offenses Reported by Month Charlotte-Mecklenburg Police Department: 2000-2004



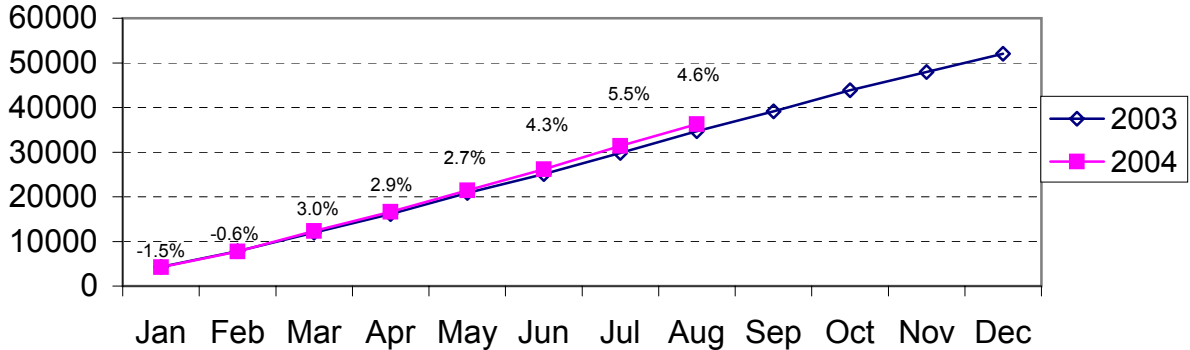
Property Index Offenses Reported by Month Charlotte-Mecklenburg Police Department: 2000-2004



Index Offense Per Day Average by Month Charlotte-Mecklenburg Police Department: 2003-2004

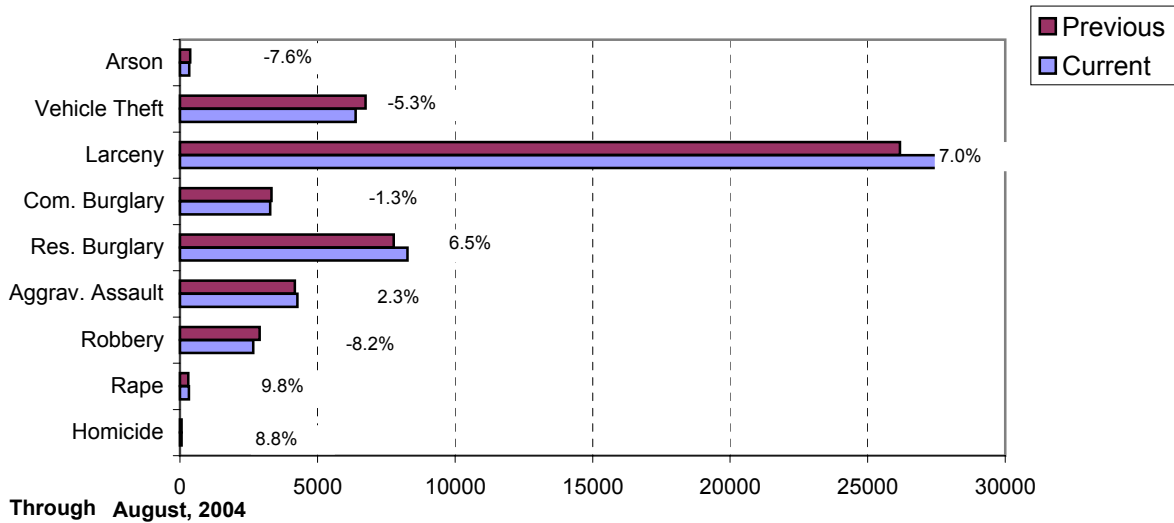


Index Offenses Year-to-Date Cumulative Totals Charlotte-Mecklenburg Police Department: 2002-2003

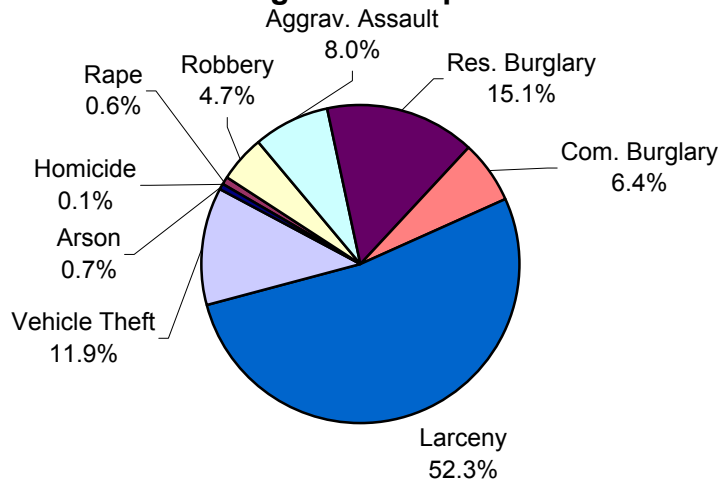


Through August, 2004

**Index Offenses in Current and Previous 12 Months
Charlotte-Mecklenburg Police Department:
2003-2004**

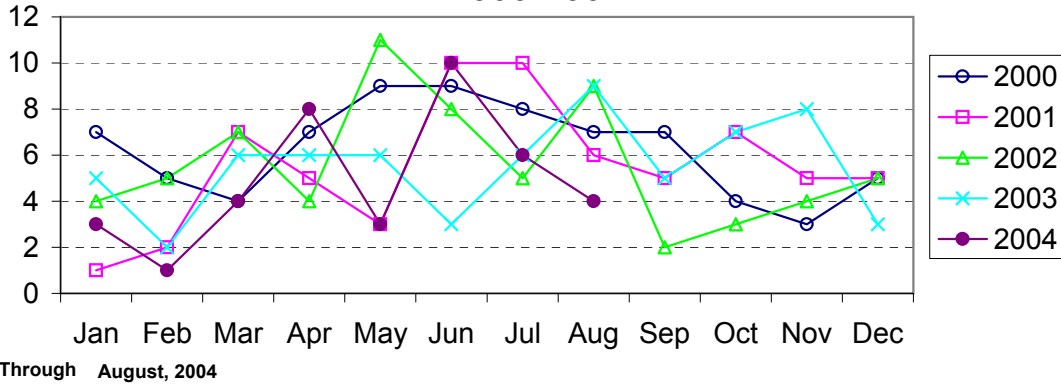


**Year-to-Date Index Offenses by Type
Charlotte-Mecklenburg Police Department: 2004**

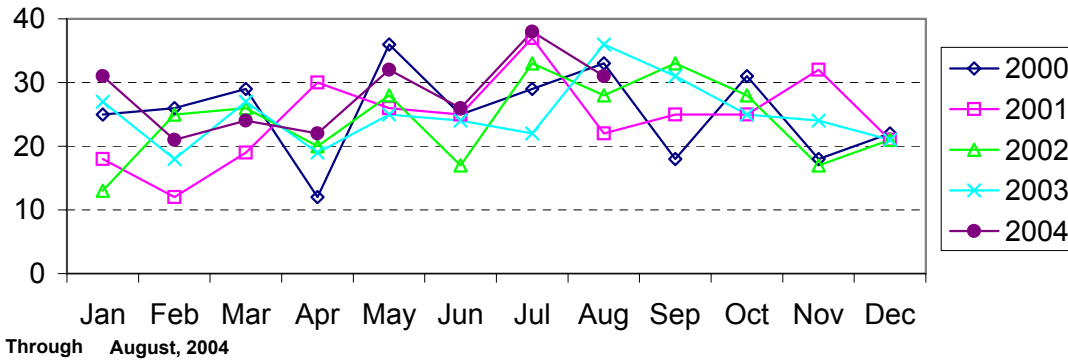


Through August, 2004

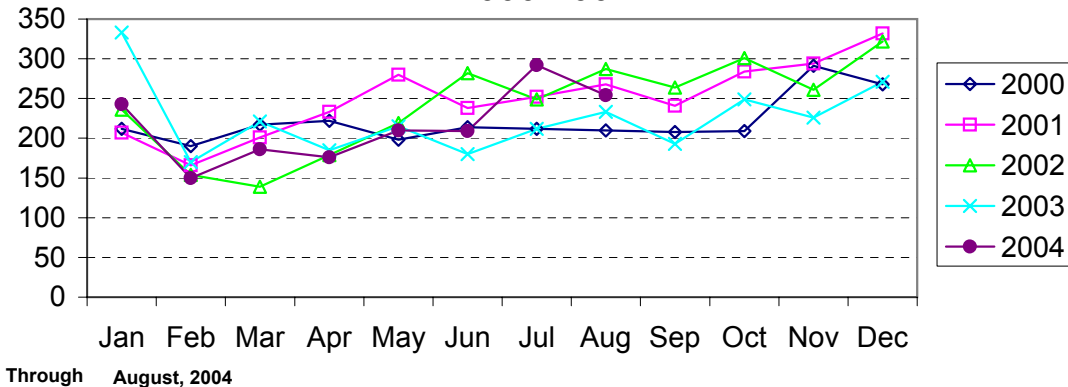
Homicide Reported by Month Charlotte-Mecklenburg Police Department: 2000-2004



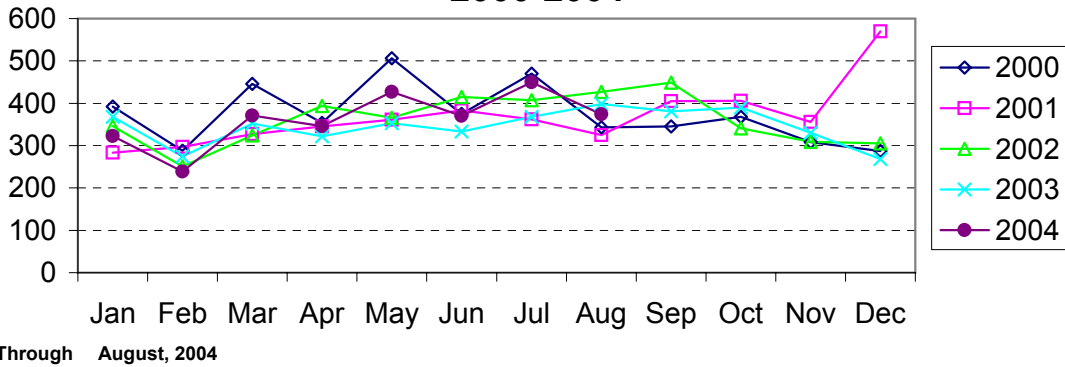
Rape Reported by Month Charlotte-Mecklenburg Police Department: 2000-2004



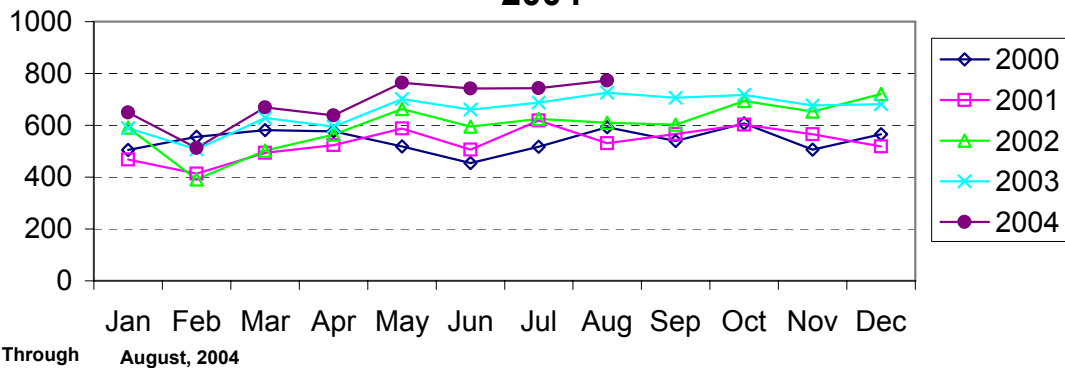
Robbery Reported by Month Charlotte-Mecklenburg Police Department: 2000-2004



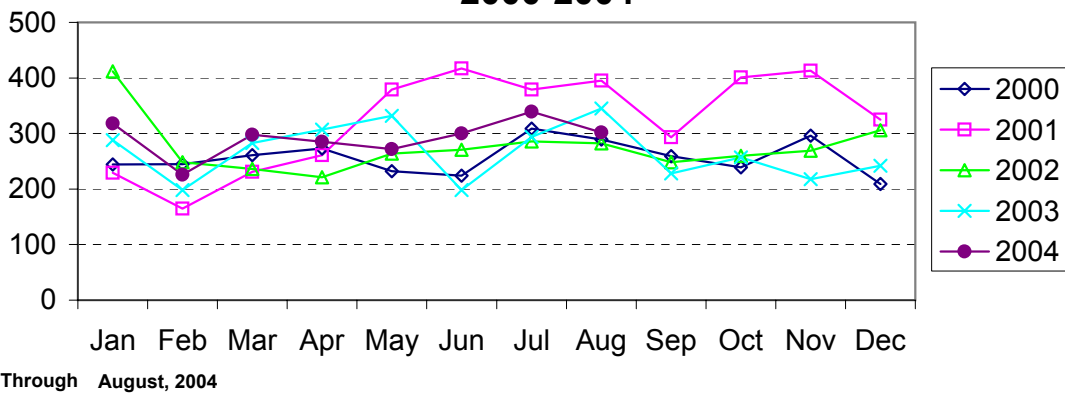
Aggravated Assault Reported by Month Charlotte-Mecklenburg Police Department: 2000-2004



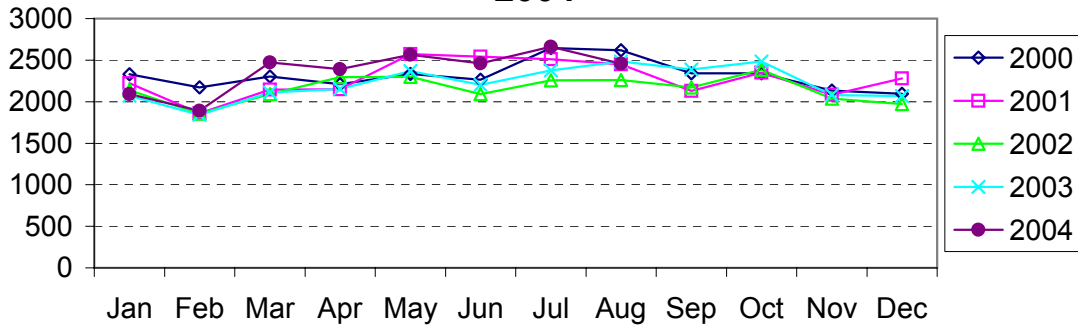
Residential Burglary Reported by Month Charlotte-Mecklenburg Police Department: 2000- 2004



Commercial Burglary Reported by Month Charlotte-Mecklenburg Police Department: 2000-2004

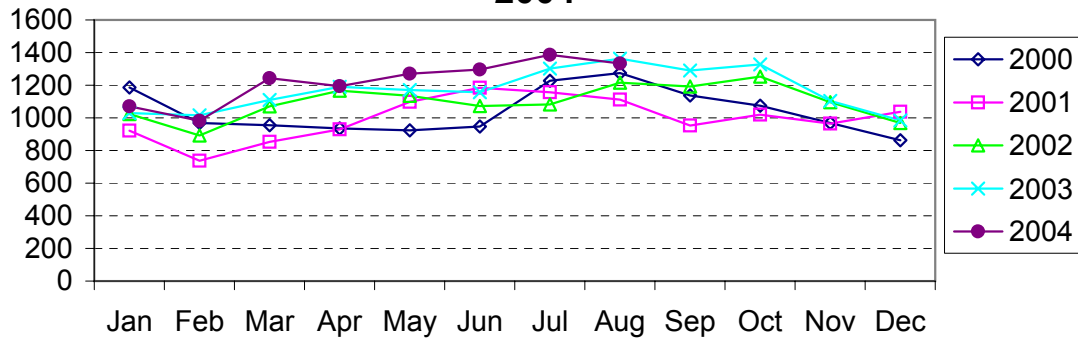


Larceny Reported by Month Charlotte-Mecklenburg Police Department: 2000-2004



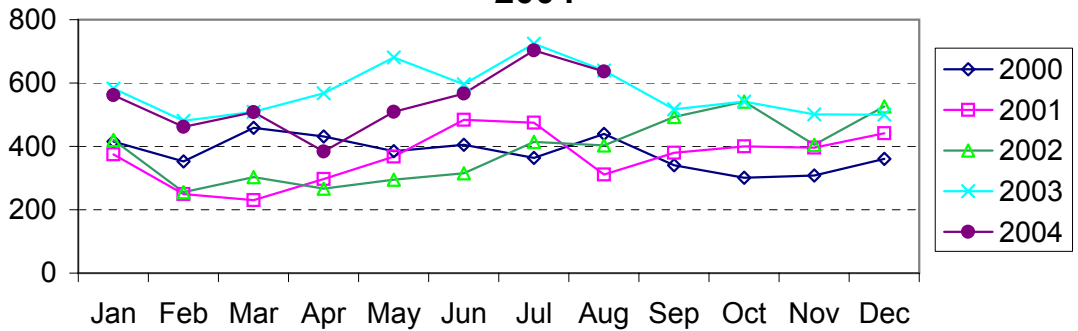
Through August, 2004

Larceny from Vehicle Reported by Month Charlotte-Mecklenburg Police Department: 2000-2004



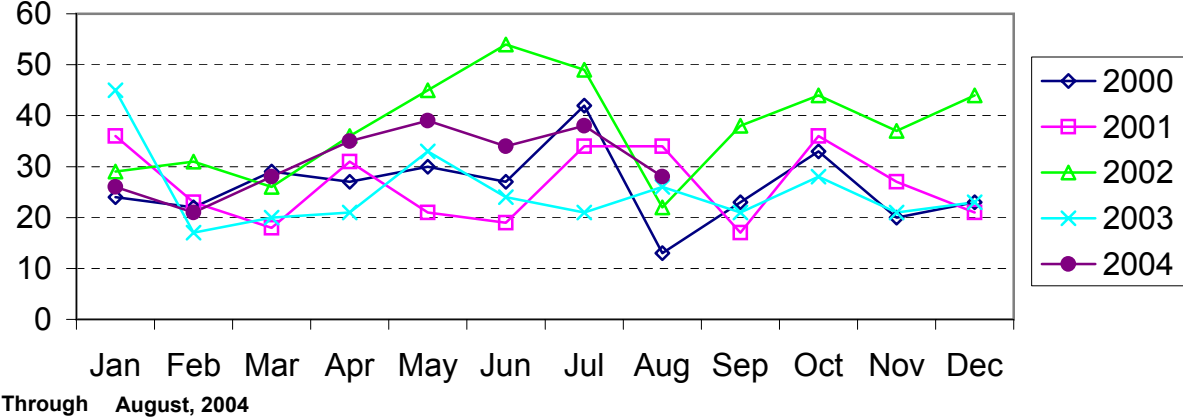
Through August, 2004

Vehicle Theft Reported by Month Charlotte-Mecklenburg Police Department: 2000-2004



Through August, 2004

Arson Reported by Month Charlotte-Mecklenburg Police Department: 2000-2004



Index Offenses Reported by Division and Service Area of Occurrence									
West Service Area: Jan-Aug, 2003-2004									
INDEX_CATEGORIES	Westover (A2)			Freedom (A3)			West Service Area		
	2003	2004	% Change	2003	2004	% Change	2003	2004	% Change
MURDER & NON-NEGLIGENT MANSLAUGHTER	4	1	-75.0%	8	4	-50.0%	12	5	-58.3%
RAPE	15	18	20.0%	27	20	-25.9%	42	38	-9.5%
ACTUAL	14	18	28.6%	22	20	-9.1%	36	38	5.6%
ATTEMPTED	1	0	-100.0%	5	0	-100.0%	6	0	-100.0%
ROBBERY	160	129	-19.4%	166	187	12.7%	326	316	-3.1%
ARMED	121	99	-18.2%	133	142	6.8%	254	241	-5.1%
STRONG-ARM	39	30	-23.1%	33	45	36.4%	72	75	4.2%
AGGRAVATED ASSAULT	274	253	-7.7%	342	327	-4.4%	616	580	-5.8%
BURGLARY	560	582	3.9%	898	1097	22.2%	1458	1679	15.2%
RESIDENTIAL	381	396	3.9%	583	764	31.0%	964	1160	20.3%
COMMERCIAL	179	186	3.9%	315	333	5.7%	494	519	5.1%
LARCENY	939	1155	23.0%	1494	1807	21.0%	2433	2962	21.7%
FROM AUTO	477	584	22.4%	712	863	21.2%	1189	1447	21.7%
BICYCLE	6	10	66.7%	9	7	-22.2%	15	17	13.3%
SHOPLIFTING	95	95	0.0%	123	184	49.6%	218	279	28.0%
OTHERS	361	466	29.1%	650	753	15.8%	1011	1219	20.6%
VEHICLE THEFT	313	286	-8.6%	547	465	-15.0%	860	751	-12.7%
ARSON	12	20	66.7%	26	26	0.0%	38	46	21.1%
TOTALS	2277	2444	7.3%	3508	3933	12.1%	5785	6377	10.2%
VIOLENT	453	401	-11.5%	543	538	-0.9%	996	939	-5.7%
PROPERTY	1824	2043	12.0%	2965	3395	14.5%	4789	5438	13.6%

Index Offenses Reported by Division and Service Area of Occurrence									
Southeast Service Area: Jan-Aug, 2003-2004									
INDEX_CATEGORIES	Providence (B1)			Independence (B3)			Southeast Service Area		
	2003	2004	% Change	2003	2004	% Change	2003	2004	% Change
MURDER & NON-NEGLIGENT MANSLAUGHTER	0	2	NA	3	2	-33.3%	3	4	33.3%
RAPE	12	11	-8.3%	22	14	-36.4%	34	25	-26.5%
ACTUAL	11	11	0.0%	19	13	-31.6%	30	24	-20.0%
ATTEMPTED	1	0	-100.0%	3	1	-66.7%	4	1	-75.0%
ROBBERY	77	89	15.6%	149	142	-4.7%	226	231	2.2%
ARMED	59	68	15.3%	129	115	-10.9%	188	183	-2.7%
STRONG-ARM	18	21	16.7%	21	27	28.6%	39	48	23.1%
AGGRAVATED ASSAULT	137	118	-13.9%	212	229	8.0%	349	347	-0.6%
BURGLARY	582	559	-4.0%	687	683	-0.6%	1269	1242	-2.1%
RESIDENTIAL	359	326	-9.2%	513	530	3.3%	872	856	-1.8%
COMMERCIAL	223	233	4.5%	174	153	-12.1%	397	386	-2.8%
LARCENY	1150	1293	12.4%	1927	1487	-22.8%	3077	2780	-9.7%
FROM AUTO	544	582	7.0%	1139	837	-26.5%	1683	1419	-15.7%
BICYCLE	7	13	85.7%	33	13	-60.6%	40	26	-35.0%
SHOPLIFTING	133	130	-2.3%	167	115	-31.1%	300	245	-18.3%
OTHERS	466	568	21.9%	588	522	-11.2%	1054	1090	3.4%
VEHICLE THEFT	224	225	0.4%	480	437	-9.0%	704	662	-6.0%
ARSON	9	10	11.1%	28	23	-17.9%	37	33	-10.8%
TOTALS	2191	2307	5.3%	3508	3017	-14.0%	5699	5324	-6.6%
VIOLENT	226	220	-2.7%	386	387	0.3%	612	607	-0.8%
PROPERTY	1965	2087	6.2%	3122	2630	-15.8%	5087	4717	-7.3%

The data in the district breakdowns does not include a small number of offenses in which the location of the offense was unknown or was entered without a valid tract assignment. Districts are not equal in geographic size, demographics, zoning/development, and other factors that influence the rate of crimes committed in an area. Therefore, the comparison of raw offense totals across districts is not advisable.

Index Offenses Reported by Division and Service Area of Occurrence									
Northeast Service Area: Jan-Aug, 2003-2004									
INDEX_CATEGORIES	North (C1)			Hickory Grove (C3)			Northeast Service Area		
	2003	2004	% Change	2003	2004	% Change	2003	2004	% Change
MURDER & NON-NEGLIGENT MANSLAUGHTER	4	4	0.0%	4	2	-50.0%	8	6	-25.0%
RAPE	23	31	34.8%	17	26	52.9%	40	57	42.5%
ACTUAL	20	29	45.0%	14	23	64.3%	34	52	52.9%
ATTEMPTED	3	2	-33.3%	3	3	0.0%	6	5	-16.7%
ROBBERY	118	156	32.2%	162	152	-6.2%	280	308	10.0%
ARMED	93	125	34.4%	129	125	-3.1%	222	250	12.6%
STRONG-ARM	25	31	24.0%	33	27	-18.2%	58	58	0.0%
AGGRAVATED ASSAULT	221	243	10.0%	269	311	15.6%	490	554	13.1%
BURGLARY	840	1058	26.0%	746	795	6.6%	1586	1853	16.8%
RESIDENTIAL	592	750	26.7%	563	632	12.3%	1155	1382	19.7%
COMMERCIAL	248	308	24.2%	183	163	-10.9%	431	471	9.3%
LARCENY	2579	2863	11.0%	1528	1454	-4.8%	4107	4317	5.1%
FROM AUTO	1483	1632	10.0%	816	732	-10.3%	2299	2364	2.8%
BICYCLE	9	16	77.8%	19	28	47.4%	28	44	57.1%
SHOPLIFTING	217	241	11.1%	143	109	-23.8%	360	350	-2.8%
OTHERS	870	974	12.0%	550	585	6.4%	1420	1559	9.8%
VEHICLE THEFT	549	577	5.1%	579	466	-19.5%	1128	1043	-7.5%
ARSON	24	33	37.5%	25	35	40.0%	49	68	38.8%
TOTALS	4358	4965	13.9%	3330	3241	-2.7%	7688	8206	6.7%
VIOLENT PROPERTY	366 3992	434 4531	18.6% 13.5%	452 2878	491 2750	8.6% -4.4%	818 6870	925 7281	13.1% 6.0%

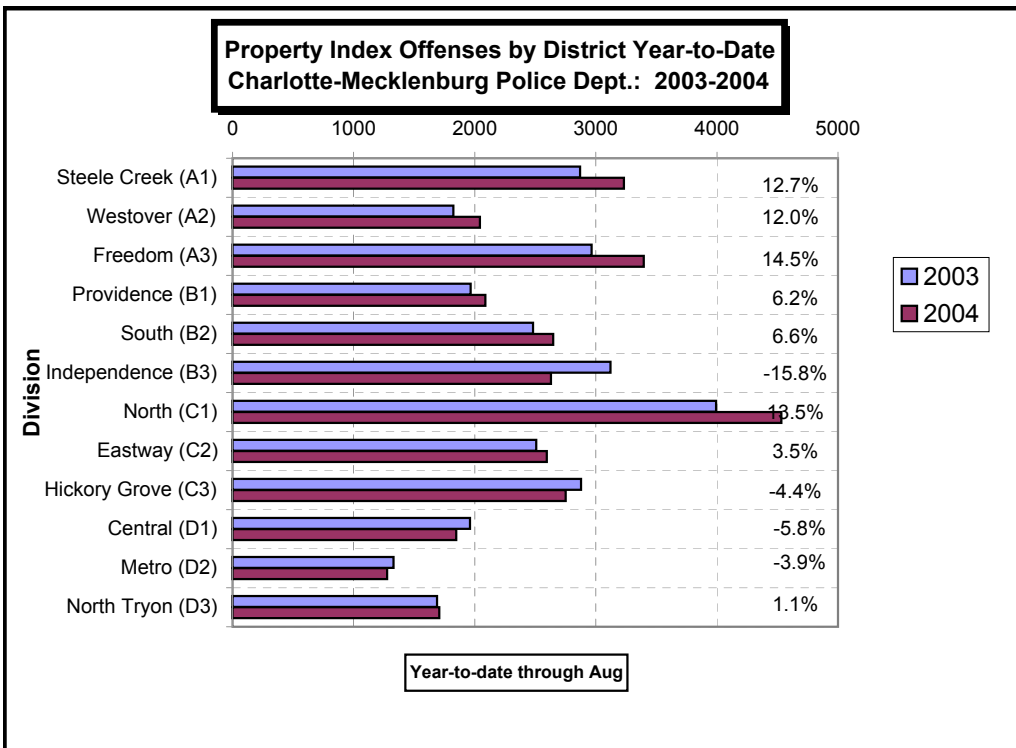
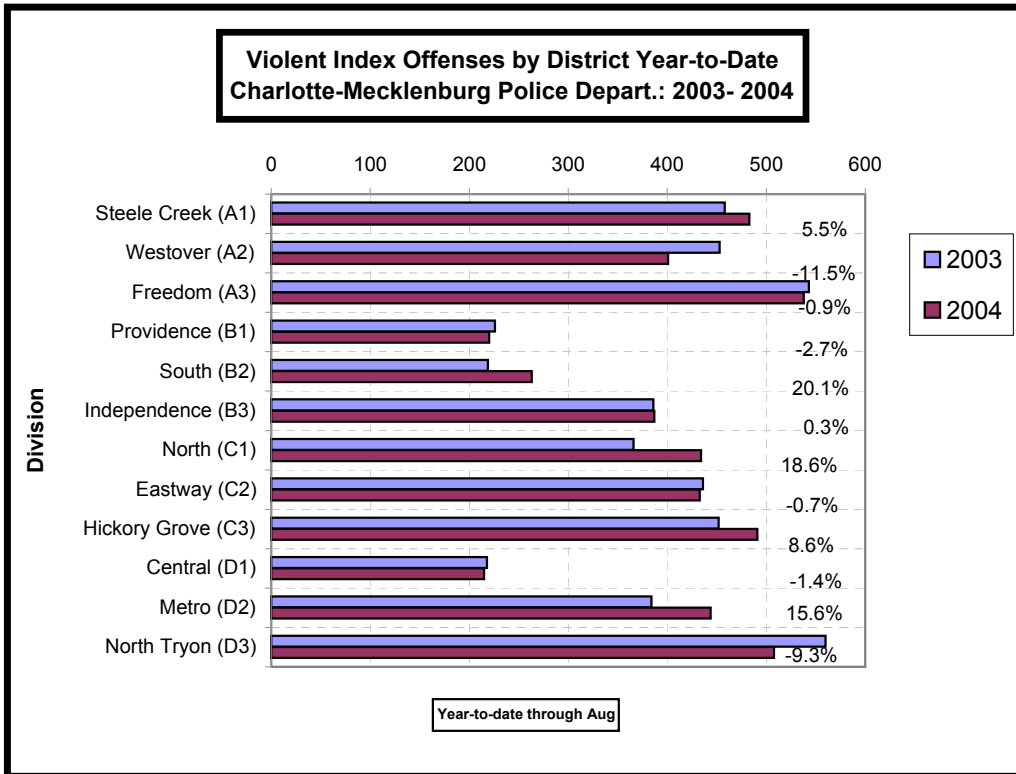
Index Offenses Reported by Division and Service Area of Occurrence									
Central Service Area: Jan-Aug, 2003-2004									
INDEX_CATEGORIES	Central (D1)			Metro (D2)			Central Service Area		
	2003	2004	% Change	2003	2004	% Change	2003	2004	% Change
MURDER & NON-NEGLIGENT MANSLAUGHTER	2	1	-50.0%	4	7	75.0%	6	8	33.3%
RAPE	11	15	36.4%	13	18	38.5%	24	33	37.5%
ACTUAL	11	13	18.2%	11	17	54.5%	22	30	36.4%
ATTEMPTED	0	2	NA	2	1	-50.0%	2	3	50.0%
ROBBERY	82	83	1.2%	116	141	21.6%	198	224	13.1%
ARMED	49	48	-2.0%	86	116	34.9%	135	164	21.5%
STRONG-ARM	33	35	6.1%	30	25	-16.7%	63	60	-4.8%
AGGRAVATED ASSAULT	123	116	-5.7%	251	278	10.8%	374	394	5.3%
BURGLARY	279	251	-10.0%	373	408	9.4%	652	659	1.1%
RESIDENTIAL	145	101	-30.3%	283	296	4.6%	428	397	-7.2%
COMMERCIAL	134	150	11.9%	90	112	24.4%	224	262	17.0%
LARCENY	1329	1391	4.7%	658	639	-2.9%	1987	2030	2.2%
FROM AUTO	766	757	-1.2%	376	284	-24.5%	1142	1041	-8.8%
BICYCLE	5	13	160.0%	9	5	-44.4%	14	18	28.6%
SHOPLIFTING	37	46	24.3%	20	48	140.0%	57	94	64.9%
OTHERS	521	575	10.4%	253	302	19.4%	774	877	13.3%
VEHICLE THEFT	341	202	-40.8%	284	219	-22.9%	625	421	-32.6%
ARSON	11	3	-72.7%	14	11	-21.4%	25	14	-44.0%
TOTALS	2178	2062	-5.3%	1713	1721	0.5%	3891	3783	-2.8%
VIOLENT PROPERTY	218 1960	215 1847	-1.4% -5.8%	384 1329	444 1277	15.6% -3.9%	602 3289	659 3124	9.5% -5.0%

The data in the district breakdowns does not include a small number of offenses in which the location of the offense was unknown or was entered without a valid tract assignment. Districts are not equal in geographic size, demographics, zoning/development, and other factors that influence the rate of crimes committed in an area. Therefore, the comparison of raw offense totals across districts is not advisable.

Index Offenses Reported by Division and Service Area of Occurrence									
East Service Area: Jan-Aug, 2003-2004									
INDEX_CATEGORIES	Eastway (C2)			North Tryon (D3)			East Service Area		
	2003	2004	% Change	2003	2004	% Change	2003	2004	% Change
MURDER & NON-NEGLIGENT MANSLAUGHTER	2	5	150.0%	5	6	20.0%	7	11	57.1%
RAPE	14	13	-7.1%	16	14	-12.5%	30	27	-10.0%
ACTUAL	13	10	-23.1%	16	13	-18.8%	29	23	-20.7%
ATTEMPTED	1	3	200.0%	0	1	NA	1	4	300.0%
ROBBERY	218	189	-13.3%	217	185	-14.7%	435	374	-14.0%
ARMED	168	144	-14.3%	177	142	-19.8%	345	286	-17.1%
STRONG-ARM	50	45	-10.0%	40	43	7.5%	90	88	-2.2%
AGGRAVATED ASSAULT	202	226	11.9%	322	303	-5.9%	524	529	1.0%
BURGLARY	603	627	4.0%	491	481	-2.0%	1094	1108	1.3%
RESIDENTIAL	433	448	3.5%	335	329	-1.8%	768	777	1.2%
COMMERCIAL	170	179	5.3%	156	152	-2.6%	326	331	1.5%
LARCENY	1542	1577	2.3%	800	911	13.9%	2342	2488	6.2%
FROM AUTO	695	567	-18.4%	415	441	6.3%	1110	1008	-9.2%
BICYCLE	11	19	72.7%	9	8	-11.1%	20	27	35.0%
SHOPLIFTING	371	532	43.4%	53	76	43.4%	424	608	43.4%
OTHERS	465	459	-1.3%	323	386	19.5%	788	845	7.2%
VEHICLE THEFT	355	368	3.7%	389	307	-21.1%	744	675	-9.3%
ARSON	9	24	166.7%	9	8	-11.1%	18	32	77.8%
TOTALS	2945	3029	2.9%	2249	2215	-1.5%	5194	5244	1.0%
VIOLENT	436	433	-0.7%	560	508	-9.3%	996	941	-5.5%
PROPERTY	2509	2596	3.5%	1689	1707	1.1%	4198	4303	2.5%

Index Offenses Reported by Division and Service Area of Occurrence									
South Service Area: Jan-Aug, 2003-2004									
INDEX_CATEGORIES	Steele Creek (A1)			South (B2)			South Service Area		
	2003	2004	% Change	2003	2004	% Change	2003	2004	% Change
MURDER & NON-NEGLIGENT MANSLAUGHTER	4	4	0.0%	3	1	-66.7%	7	5	-28.6%
RAPE	16	19	18.8%	12	16	33.3%	28	35	25.0%
ACTUAL	14	17	21.4%	10	15	50.0%	24	32	33.3%
ATTEMPTED	2	2	0.0%	2	1	-50.0%	4	3	-25.0%
ROBBERY	183	154	-15.8%	84	91	8.3%	267	245	-8.2%
ARMED	137	124	-9.5%	63	72	14.3%	200	196	-2.0%
STRONG-ARM	36	30	-16.7%	21	19	-9.5%	57	49	-14.0%
AGGRAVATED ASSAULT	255	306	20.0%	120	155	29.2%	375	461	22.9%
BURGLARY	594	582	-2.0%	600	560	-6.7%	1194	1142	-4.4%
RESIDENTIAL	400	408	2.0%	455	432	-5.1%	855	840	-1.8%
COMMERCIAL	194	174	-10.3%	145	128	-11.7%	339	302	-10.9%
LARCENY	1842	2227	20.9%	1612	1775	10.1%	3454	4002	15.9%
FROM AUTO	892	1272	42.6%	912	1011	10.9%	1804	2283	26.6%
BICYCLE	16	16	0.0%	9	12	33.3%	25	28	12.0%
SHOPLIFTING	274	283	3.3%	111	103	-7.2%	385	386	0.3%
OTHERS	660	656	-0.6%	580	649	11.9%	1240	1305	5.2%
VEHICLE THEFT	416	394	-5.3%	254	288	13.4%	670	682	1.8%
ARSON	17	29	70.6%	16	24	50.0%	33	53	60.6%
TOTALS	3327	3715	11.7%	2701	2910	7.7%	6028	6625	9.9%
VIOLENT	458	483	5.5%	219	263	20.1%	677	746	10.2%
PROPERTY	2869	3232	12.7%	2482	2647	6.6%	5351	5879	9.9%

The data in the district breakdowns does not include a small number of offenses in which the location of the offense was unknown or was entered without a valid tract assignment. Districts are not equal in geographic size, demographics, zoning/development, and other factors that influence the rate of crimes committed in an area. Therefore, the comparison of raw offense totals across districts is not advisable.



The data in the district breakdowns does not include a small number of offenses in which the location of the offense was unknown or was entered without a valid tract assignment. Districts are not equal in geographic size, demographics, zoning/development, and other factors that influence the rate of crimes committed in an area. Therefore, the comparison of raw offense totals across districts is not advisable.

Arrests by Charlotte-Mecklenburg Police Department
Year-To-Date: 2003-2004
(Through August)

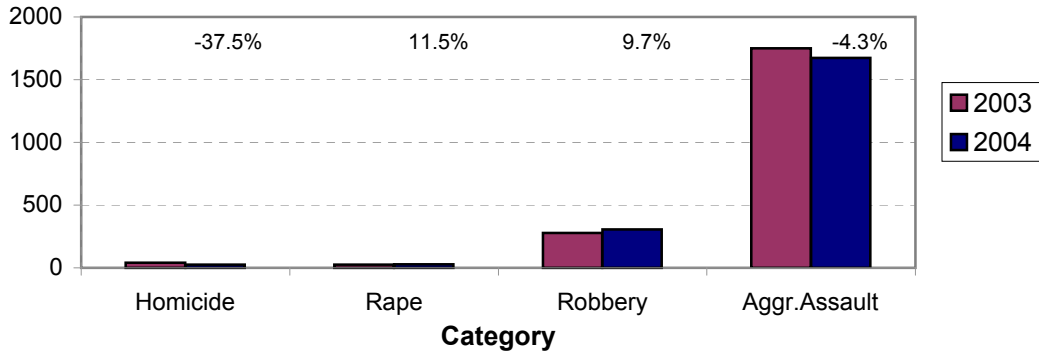
CATEGORY	ADULTS (AGE 18 & OLDER):			JUVENILES (UNDER 18):			TOTAL ARRESTS:		
	2003 Y-T-D	2004 Y-T-D	% CHANGE	2003 Y-T-D	2004 Y-T-D	% CHANGE	2003 Y-T-D	2004 Y-T-D	% CHANGE
Murder/Non-Negligent Manslaughter	36	25	-30.6%	4	0	-100.0%	40	25	-37.5%
Negligent & Vehicular Manslaughter	1	4	300.0%	0	0	NA	1	4	300.0%
Rape	22	27	22.7%	4	2	-50.0%	26	29	11.5%
Robbery	206	205	-0.5%	72	100	38.9%	278	305	9.7%
Aggravated Assault	1530	1455	-4.9%	219	219	0.0%	1749	1674	-4.3%
Burglary	344	382	11.0%	157	151	-3.8%	501	533	6.4%
Larceny	989	1065	7.7%	449	415	-7.6%	1438	1480	2.9%
Vehicle Theft	110	52	-52.7%	272	108	-60.3%	382	160	-58.1%
Non-Aggravated Assault	1174	1244	6.0%	572	527	-7.9%	1746	1771	1.4%
Arson	16	13	-18.8%	19	23	21.1%	35	36	2.9%
Forgery/Counterfiet	79	92	16.5%	3	2	-33.3%	82	94	14.6%
Fraud	361	366	1.4%	6	7	16.7%	367	373	1.6%
Embezzlement	68	65	-4.4%	4	11	175.0%	72	76	5.6%
Stolen Property	371	349	-5.9%	105	67	-36.2%	476	416	-12.6%
Vandalism	176	153	-13.1%	131	137	4.6%	307	290	-5.5%
Weapons	333	296	-11.1%	48	42	-12.5%	381	338	-11.3%
Prostitution	234	226	-3.4%	2	8	300.0%	236	234	-0.8%
Sex Offenses	143	133	-7.0%	31	13	-58.1%	174	146	-16.1%
Drugs	2204	1843	-16.4%	212	165	-22.2%	2416	2008	-16.9%
Gambling	20	12	-40.0%	0	0	NA	20	12	-40.0%
Offenses vs. Family	6	3	-50.0%	0	1	NA	6	4	-33.3%
DUI	1403	1308	-6.8%	9	7	-22.2%	1412	1315	-6.9%
Liquor	109	145	33.0%	10	6	-40.0%	119	151	26.9%
Disorder Conduct	381	381	0.0%	176	200	13.6%	557	581	4.3%
Other Non-Traffic	5031	5346	6.3%	510	513	0.6%	5541	5859	5.7%
VIOLENT INDEX¹	1794	1712	-4.6%	299	321	7.4%	2093	2033	-2.9%
PROPERTY INDEX²	1459	1512	3.6%	897	697	-22.3%	2356	2209	-6.2%
INDEX SUBTOTAL	3253	3224	-0.9%	1196	1018	-14.9%	4449	4242	-4.7%
PART 2 SUBTOTAL³	12094	11966	-1.1%	1819	1706	-6.2%	13913	13672	-1.7%
TOTAL	15347	15190	-1.0%	3015	2724	-9.7%	18362	17914	-2.4%

¹Violent Index includes murder and non-negligent manslaughter, rape, robbery, and aggravated assault.

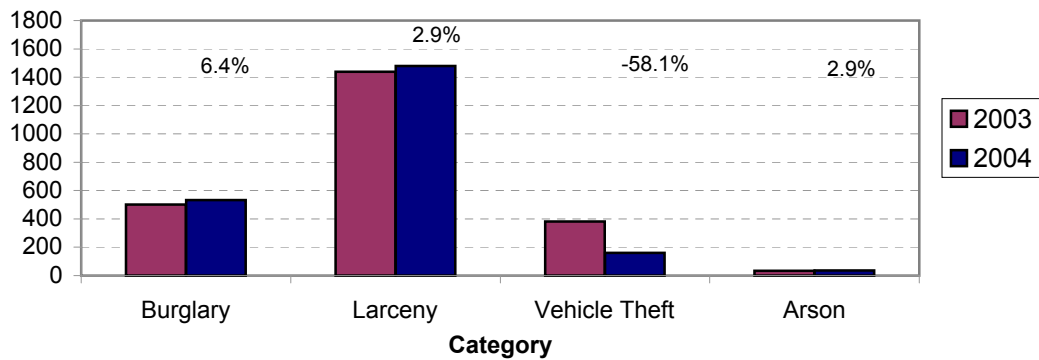
²Property Index includes burglary, larceny, vehicle theft, and arson.

³Part 2 crimes include non-traffic crimes not counted in the Index totals.

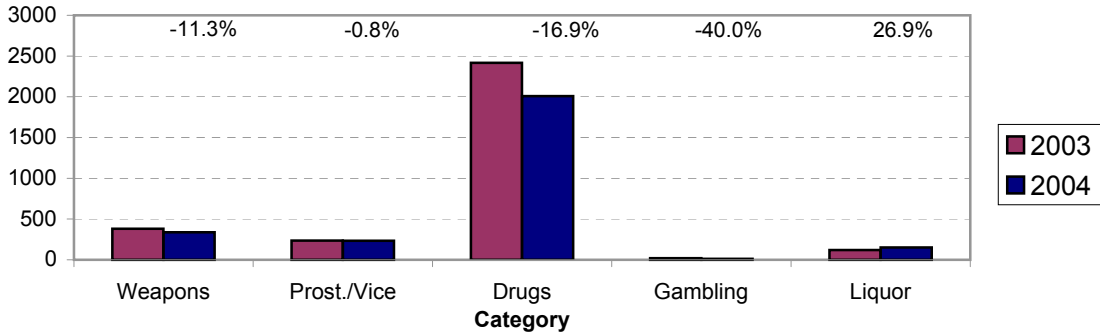
**Violent Index Arrests Year-to-Date
Charlotte-Mecklenburg Police Department: 2003-2004
(Through August)**



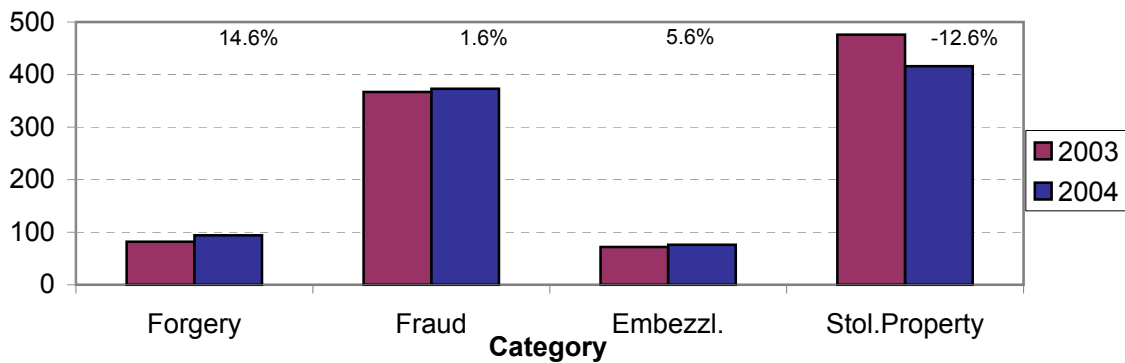
**Property Index Arrests Year-to-Date
Charlotte-Mecklenburg Police Department: 2003-2004
(Through August)**



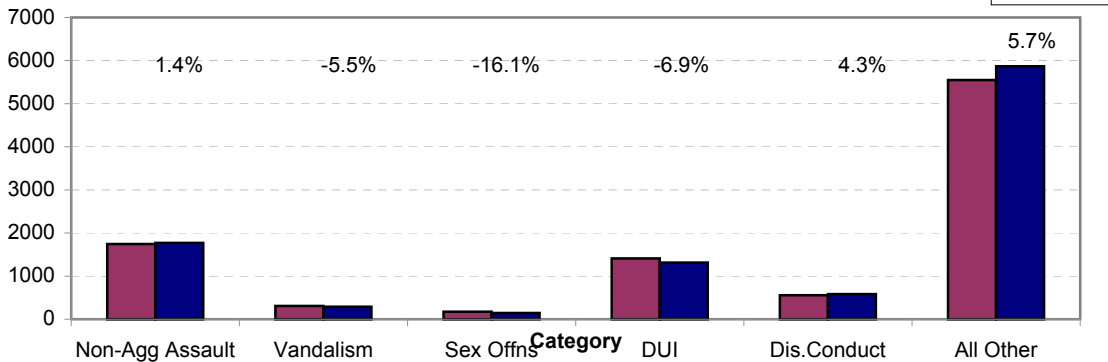
**Arrests for Vice/CCW/Drugs/Etc. Year-to-Date
Charlotte-Mecklenburg Police Department: 2003 - 2004
(Through August)**



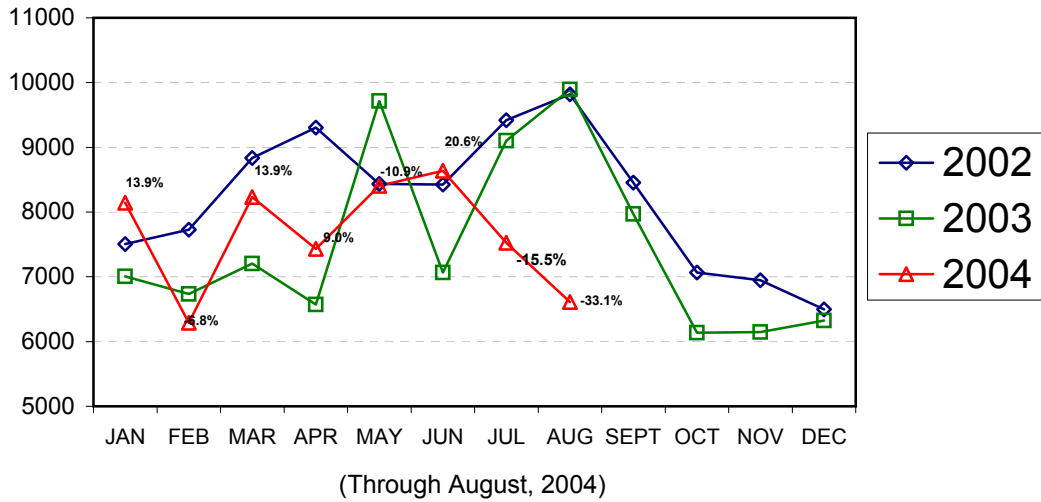
**Arrests for Property/White Collar Crime Year-to-Date
Charlotte-Mecklenburg Police Department: 2003 - 2004
(Through August)**



**Arrests for Other Categories Year-to-Date
Charlotte-Mecklenburg Police Department: 2003 - 2004
(Through August)**

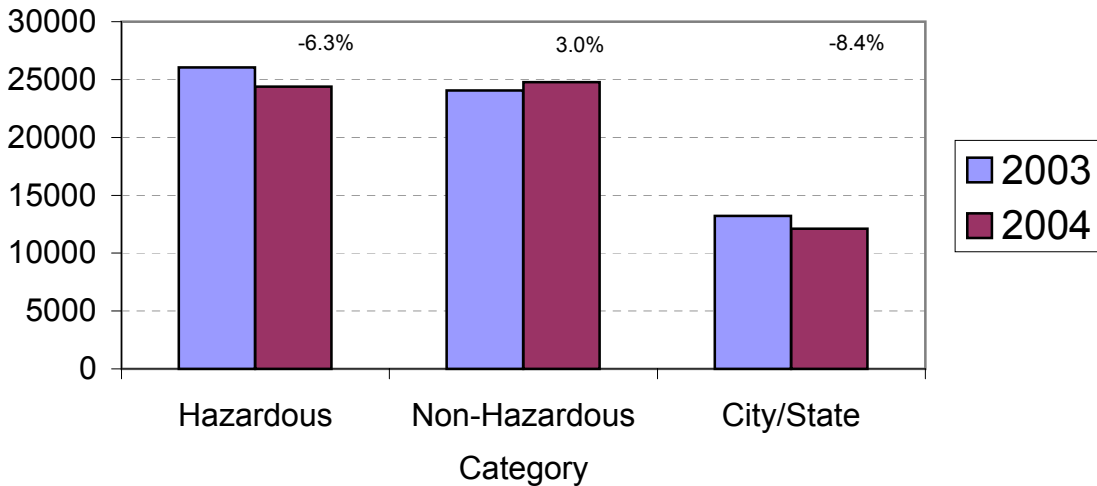


Total Citation Enforcement by Month Charlotte-Mecklenburg Police Dept.: 2002-2004

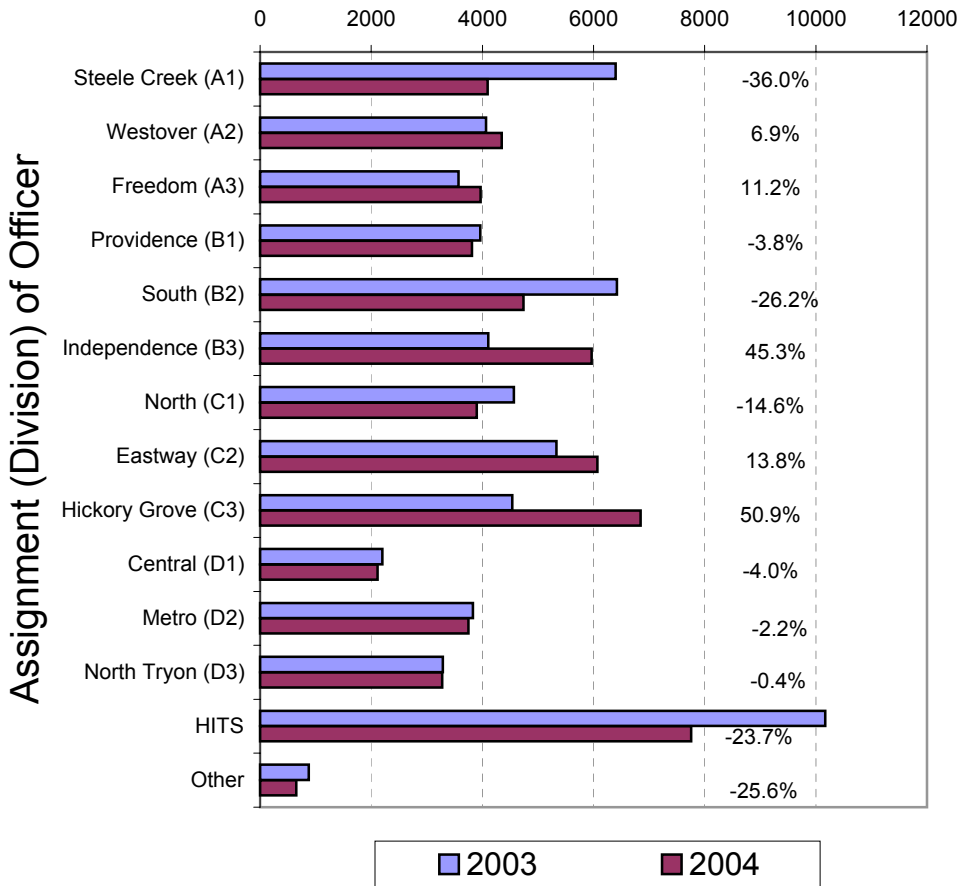


(Includes Hazardous, Non-Hazardous, and City/State Citations)

CMPD Citation Enforcement by Category Year-to-Date, 2003 - 2004 (Through August, 2004)



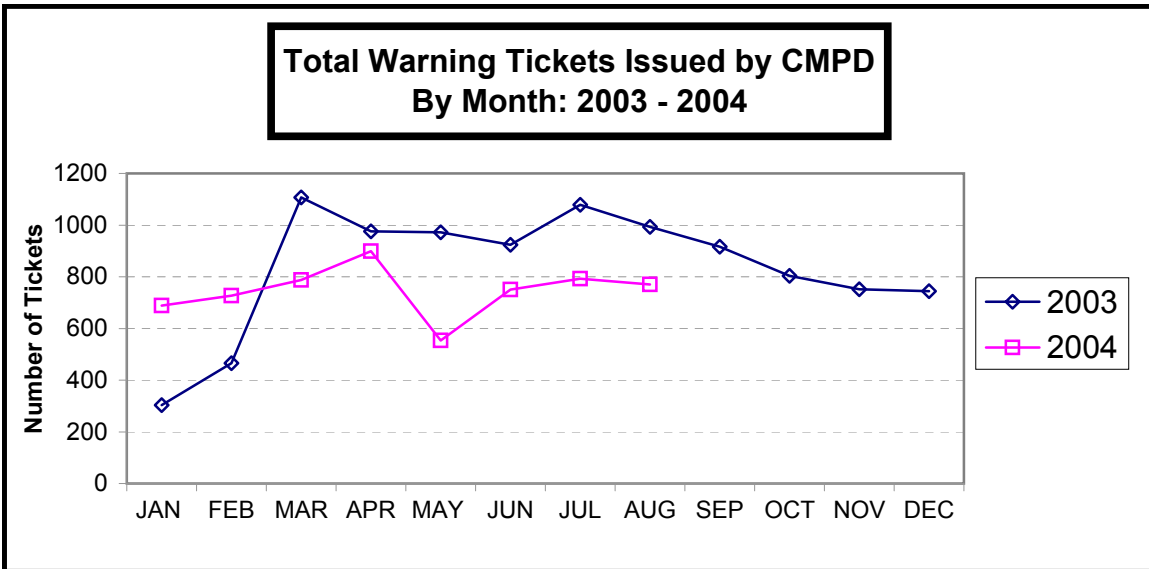
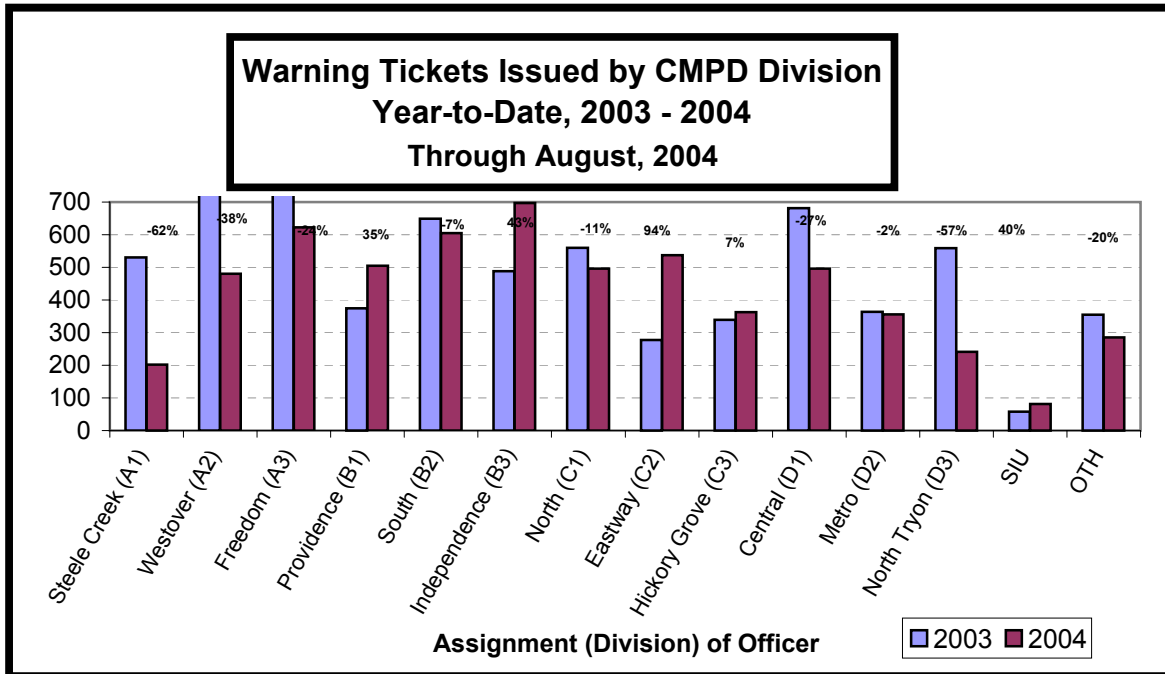
**Citations Issued Year-to-Date by CMPD Divisions
2003 - 2004
(Through August, 2004)**



Note: 2003 and 2004 data for HITS and Other was adjusted in April, 2004.

**Citations Issued by the Charlotte Mecklenburg Police Dept. Year-to-Date
(Through August, 2004)**

Total Citations	2003	2004	% Change
Hazardous	26,040	24,394	-6.3%
Non-Hazardous	24,062	24,774	3.0%
Other City/State Statute/Ordinance	13,212	12,105	-8.4%
Total	63,314	61,273	-3.2%



Warning Tickets Issued by CMPD Year-to-Date Through August, 2004

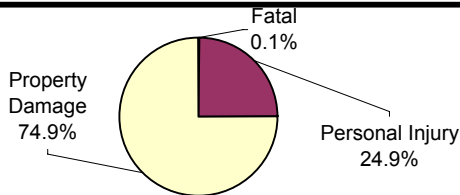
	2003	2004	% Change
Total Warning Tickets	6821	5967	-12.5%

Traffic Collison Reports
Charlotte-Mecklenburg Police Department
Year-to-Date: 2003-2004
(Through August)

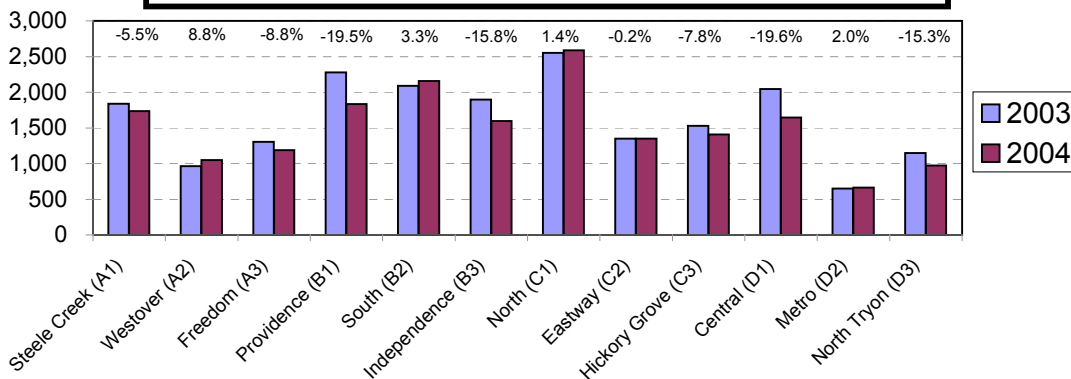
<u>Type</u>	<u>2003</u>	<u>2004</u>	<u>% Change</u>
Fatal Collisions	33	26	-21.2%
Vehicle Occupants Killed	34	23	-32.4%
Pedestrians Killed	4	4	0.0%
Personal Injury Collisions	4845	4523	-6.7%
Property Damage Collisions	14892	13683	-8.1%
Total Collisions	19770	18232	-7.8%

* The number of fatal collisions and the number of persons killed in those incidents is taken from the HITS file. Their records are updated for deaths that occur after the initial report is filed.

Traffic Collisions Reported by Type
Charlotte-Mecklenburg Police Department:
2004 Year-to-Date
(Through August)



Traffic Collisions Reported by Charlotte-Mecklenburg Police Dept.
Year-to-Date By Location (Division) : 2003 -2004
(Through August)



Uniform Crime Reporting Procedures:

The Charlotte-Mecklenburg Police Department reports offense and arrest statistics in accordance with standard Uniform Crime Reporting (UCR) guidelines. UCR policy states that any adjustments to previous months can be made on the current month's report:

...In tabulating crime counts, an agency may find that offense totals for past months require adjustments due to developments in the investigation or other handling of the matter. It may be necessary to adjust totals reported to UCR for the past month or prior months. Needed adjustments can be made on the current month's report and do not affect the reliability of the figures in that such adjustments tend to equalize each other from month to month over a period of time.

- *Uniform Crime Reporting Handbook*, FBI, 1984, p. 42-43

We are required to report crime monthly to the UCR program, and we do therefore make an effort to process monthly changes in a timely manner. However, occasionally due to the review and processing required for reclassifying, unfounding or clearing cases, the current month's totals may reflect the processing of a backlog of these changes from previous months.

Users of the data are cautioned that conclusions about substantial changes in crime trends or in clearance rates based on only a single month's data or trend may reflect some of these adjustments. For this reason, in addition to the monthly and year-to-date trends on Page 1, the monthly report routinely includes a comparison for the previous 12 months (p. 4), as well as graphs that provide seasonal/monthly comparisons over a five-year period (p. 5-8).

This report was compiled with data entry assistance from Sandy Johnson in the Research, Planning, and Analysis Division.

We make an effort to present the most accurate information available at the time this report is published. Please notify the Research, Planning, and Analysis office if you have any questions about the data in this report or an error that was missed in proofing the report.

The division names adopted in 2003 are used in this report. For ease of use, they also include the old district designations in parentheses.