



**CHARLOTTE-MECKLENBURG POLICE DEPARTMENT
MONTHLY SUMMARY REPORT
JULY, 2004**

**Darrel Stephens
Chief of Police**

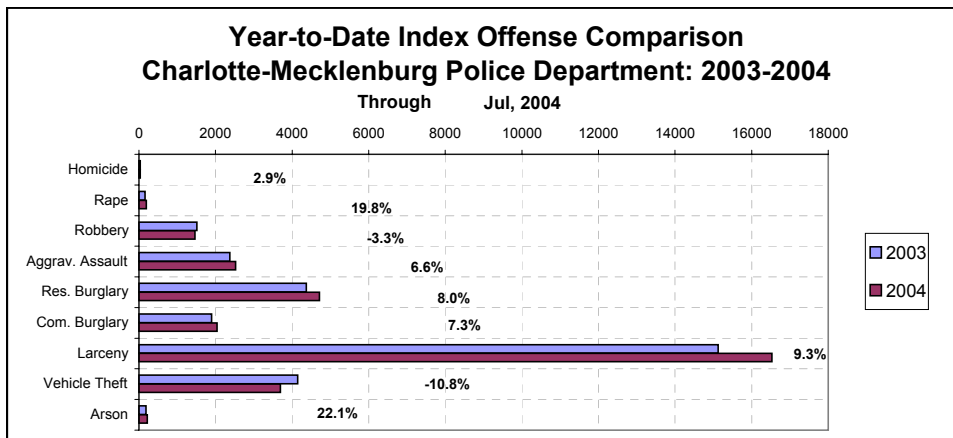
INDEX OFFENSES REPORTED TO CHARLOTTE-MECKLENBURG POLICE DEPARTMENT

Jul, 2004 INDEX OFFENSES	# THIS MONTH	% OF ALL INDEX	# LAST MONTH	MONTHLY % CHANGE	SAME MONTH LAST YEAR	MONTHLY % CHANGE	THIS YEAR TO DATE	LAST YEAR TO DATE	ANNUAL % CHANGE
HOMICIDE (MURDER & NON-NEGLIGENT MANSLAUGHTER)	6	0.1%	10	-40.0%	6	0.0%	35	34	2.9%
RAPE TOTAL	38	0.7%	26	46.2%	22	72.7%	194	162	19.8%
ACTUAL	34	0.6%	23	47.8%	15	126.7%	180	143	25.9%
ATTEMPT	4	0.1%	3	33.3%	7	-42.9%	14	19	-26.3%
ROBBERY TOTAL	292	5.5%	209	39.7%	212	37.7%	1466	1516	-3.3%
ARMED	235	4.5%	163	44.2%	165	42.4%	1127	1180	-4.5%
STRONG-ARM	57	1.1%	46	23.9%	47	21.3%	339	336	0.9%
AGGRAVATED ASSAULT TOTAL	450	8.5%	370	21.6%	368	22.3%	2526	2370	6.6%
BURGLARY TOTAL	1082	20.5%	1042	3.8%	982	10.2%	6755	6269	7.8%
RESIDENTIAL	743	14.1%	742	0.1%	688	8.0%	4717	4369	8.0%
COMMERCIAL	339	6.4%	300	13.0%	294	15.3%	2038	1900	7.3%

FORCE	883	16.8%	847	4.3%	774	14.1%	5420	4956	9.4%
NO FORCE	143	2.7%	133	7.5%	142	0.7%	933	918	1.6%
ATTEMPT	56	1.1%	62	-9.7%	66	-15.2%	402	395	1.8%
LARCENY TOTAL	2662	50.5%	2459	8.3%	2376	12.0%	16533	15124	9.3%
\$200 AND OVER	1311	24.9%	1275	2.8%	1225	7.0%	8058	7487	7.6%
\$50 TO \$200	468	8.9%	421	11.2%	405	15.6%	3007	2741	9.7%
UNDER \$50	883	16.8%	763	15.7%	746	18.4%	5468	4896	11.7%

FROM AUTO	1387	26.3%	1296	7.0%	1301	6.6%	8444	7974	5.9%
BICYCLE	35	0.7%	21	66.7%	28	25.0%	140	111	26.1%
SHOPLIFTING	250	4.7%	247	1.2%	219	14.2%	1734	1513	14.6%
OTHERS	990	18.8%	895	10.6%	828	19.6%	6215	5526	12.5%
VEHICLE THEFT TOTAL	703	13.3%	567	24.0%	724	-2.9%	3695	4142	-10.8%
ARSON TOTAL	38	0.7%	34	11.8%	21	81.0%	221	181	22.1%
TOTALS	5271	100.0%	4717	11.7%	4711	11.9%	31425	29798	5.5%
VIOLENT PROPERTY	786	14.9%	615	27.8%	608	29.3%	4221	4082	3.4%
PROPERTY	4485	85.1%	4102	9.3%	4103	9.3%	27204	25716	5.8%

NOTE: These totals include offenses reported to the Charlotte-Mecklenburg Police Department in accordance with the Uniform Crime Reporting Program. Totals for homicide do not include cases investigated by the police but classed by UCR guidelines as negligent manslaughter or as "justifiable homicide."

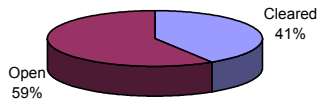


INDEX CLEARANCES REPORTED BY THE CHARLOTTE-MECKLENBURG POLICE DEPARTMENT

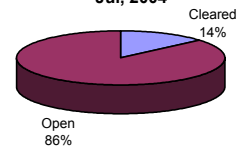
Jul, 2004 INDEX CLEARANCES	THIS MONTH:		LAST MONTH:		SAME MO. LAST YR:		THIS YEAR TO DATE:		LAST YEAR TO DATE:	
	NO.	%	NO.	%	NO.	%	NO.	%	NO.	%
MURDER & NON-NEGLIGENT MANSLAUGHTER	2	33.3%	4	40.0%	2	33.3%	14	40.0%	19	55.9%
RAPE TOTAL	1	2.6%	14	53.8%	50	227.3%	106	54.6%	117	72.2%
ACTUAL	0	0.0%	13	56.5%	43	286.7%	96	53.3%	103	72.0%
ATTEMPT	1	25.0%	1	33.3%	7	100.0%	10	71.4%	14	73.7%
ROBBERY TOTAL	19	6.5%	69	33.0%	74	34.9%	390	26.6%	307	20.3%
ARMED	16	6.8%	51	31.3%	46	27.9%	290	25.7%	196	16.6%
STRONG-ARM	3	5.3%	18	39.1%	28	59.6%	100	29.5%	111	33.0%
AGGRAVATED ASSAULT TOTAL	137	30.4%	193	52.2%	416	113.0%	1224	48.5%	1352	57.0%
BURGLARY TOTAL	73	6.7%	154	14.8%	317	32.3%	741	11.0%	790	12.6%
RESIDENTIAL	54	7.3%	129	17.4%	172	25.0%	1021	21.6%	511	11.7%
COMMERCIAL	19	5.6%	25	8.3%	145	49.3%	120	5.9%	279	14.7%
LARCENY TOTAL	215	8.1%	377	15.3%	631	26.6%	2229	13.5%	2106	13.9%
FROM AUTO	22	1.6%	50	3.9%	107	8.2%	243	2.9%	292	3.7%
BICYCLE	3	8.6%	0	0.0%	4	14.3%	10	7.1%	13	11.7%
SHOPLIFTING	130	52.0%	181	73.3%	153	69.9%	1059	61.1%	878	58.0%
OTHERS	60	6.1%	146	16.3%	367	44.3%	917	14.8%	923	16.7%
VEHICLE THEFT TOTAL	105	14.9%	93	16.4%	198	27.3%	686	18.6%	776	18.7%
ARSON TOTAL	5	13.2%	13	38.2%	5	23.8%	59	26.7%	53	29.3%
TOTALS	557	10.6%	917	19.4%	1693	35.9%	5449	17.3%	5520	18.5%
VIOLENT PROPERTY	159	20.2%	280	45.5%	542	89.1%	1734	41.1%	1795	44.0%
	398	8.9%	637	15.5%	1151	28.1%	3715	13.7%	3725	14.5%

NOTE: Clearances are reported in accordance with Uniform Crime Report guidelines. Since clearances are not counted until they are entered into the Records system, any delays in processing may result in some clearances being reported in succeeding months.

**Year-to-Date Violent Index Clearance Rate
Charlotte-Mecklenburg Police Department: 2004
Jul, 2004**

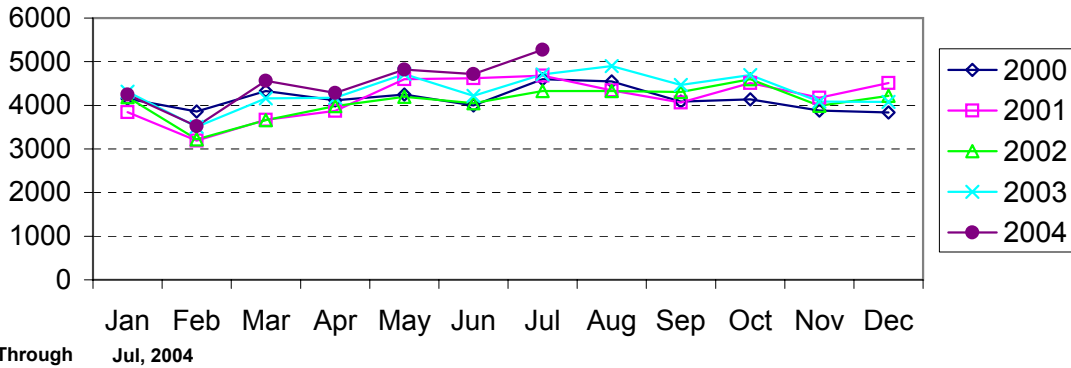


**Year-to-Date Property Index Clearance Rate
Charlotte-Mecklenburg Police Department: 2004
Jul, 2004**

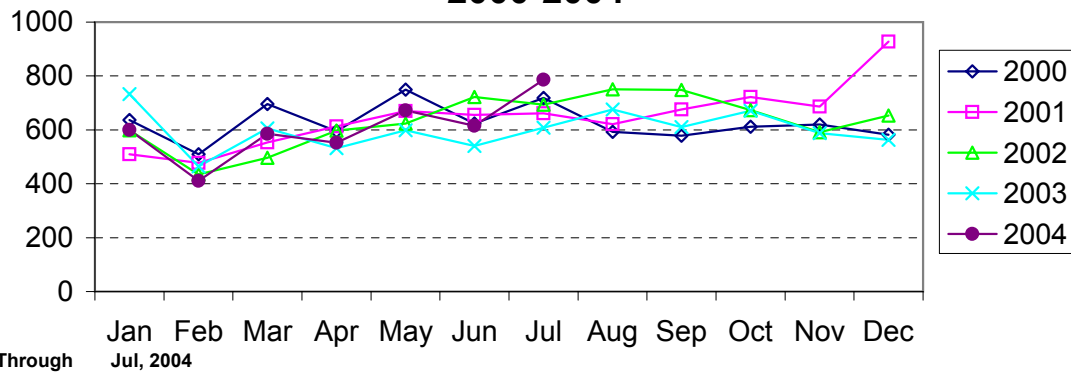


Clearance rates for crime reporting are calculated by dividing the number of crimes cleared during a designated time span by the number of crimes reported in the same period and converting the result to a percentage (multiplying by 100). Since cases from previous reporting periods can be cleared during the designated time span, the rate may be higher than 100%.

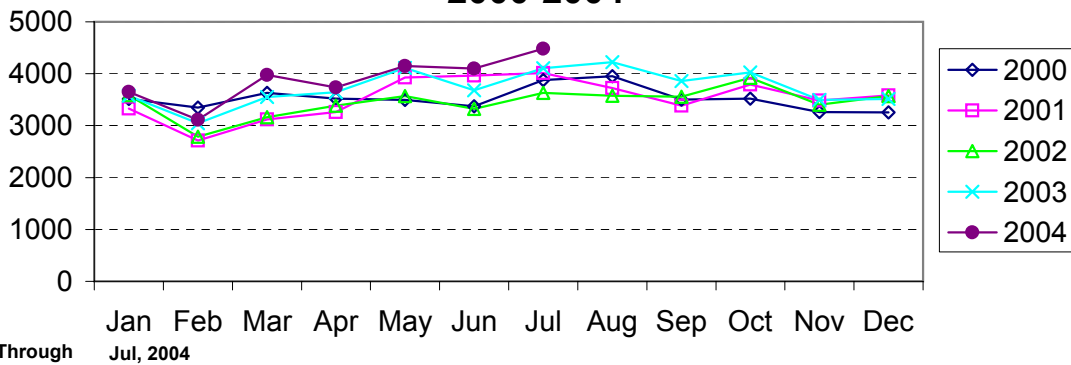
Index Offenses Reported by Month Charlotte-Mecklenburg Police Department: 2000-2004



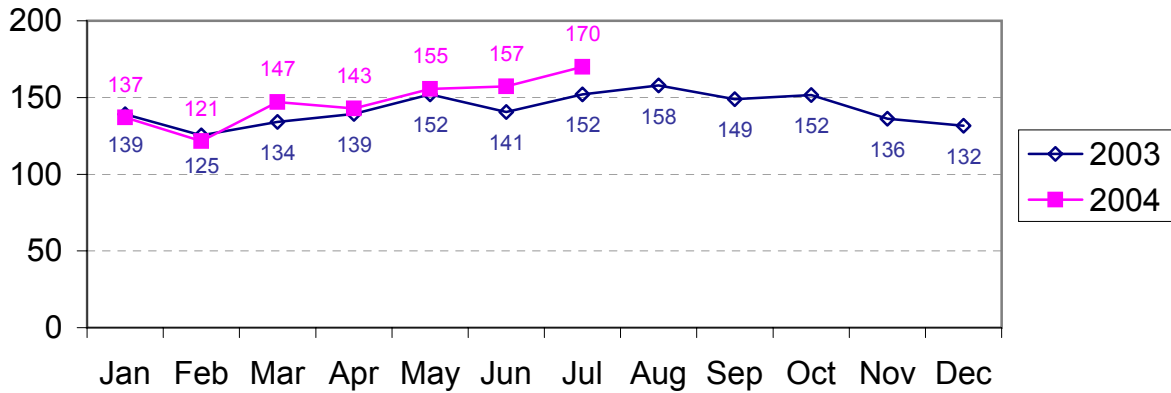
Violent Index Offenses Reported by Month Charlotte-Mecklenburg Police Department: 2000-2004



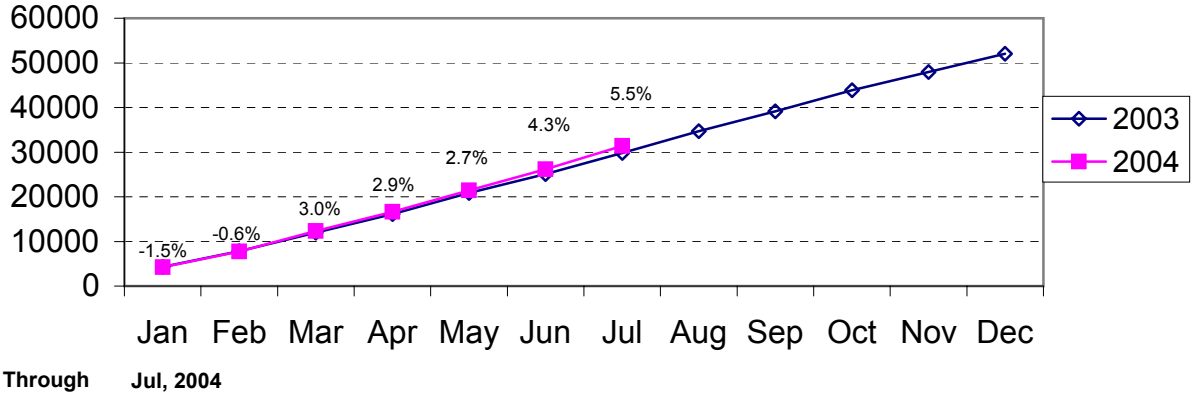
Property Index Offenses Reported by Month Charlotte-Mecklenburg Police Department: 2000-2004



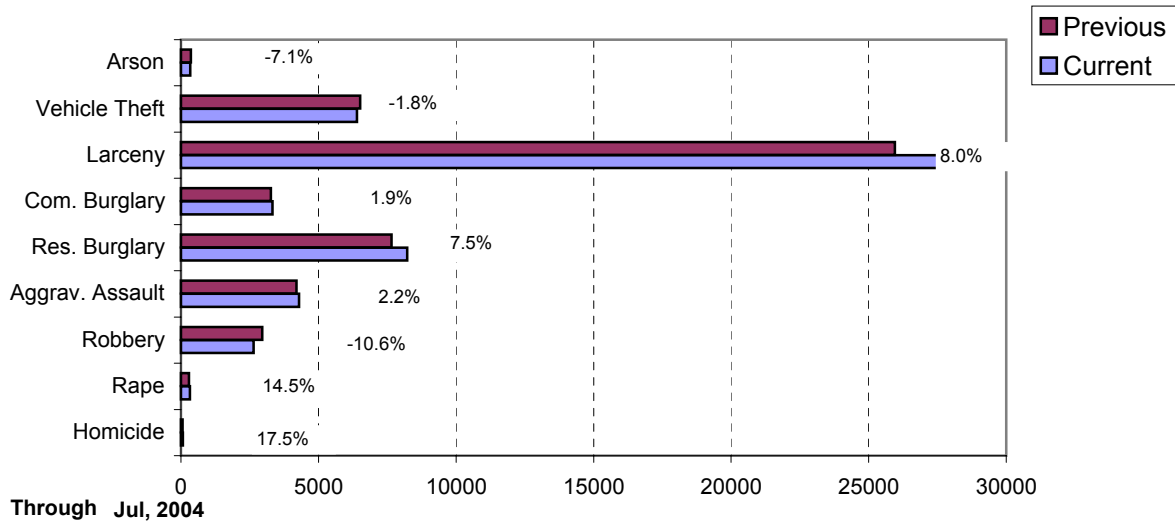
Index Offense Per Day Average by Month Charlotte-Mecklenburg Police Department: 2003-2004



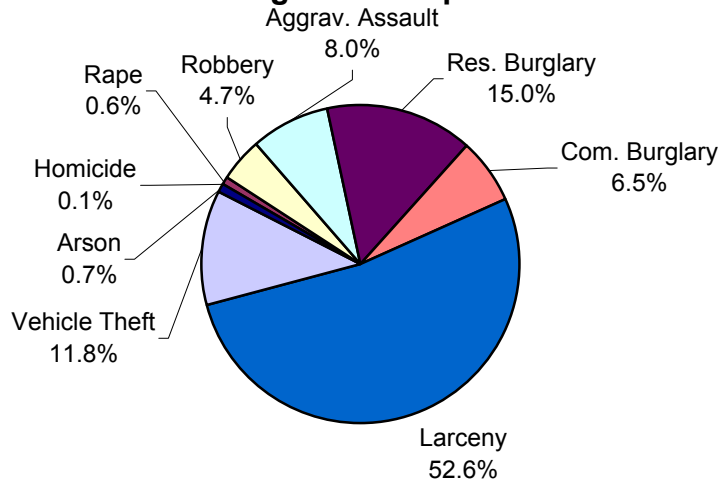
Index Offenses Year-to-Date Cumulative Totals Charlotte-Mecklenburg Police Department: 2002-2003



Index Offenses in Current and Previous 12 Months Charlotte-Mecklenburg Police Department: 2003-2004

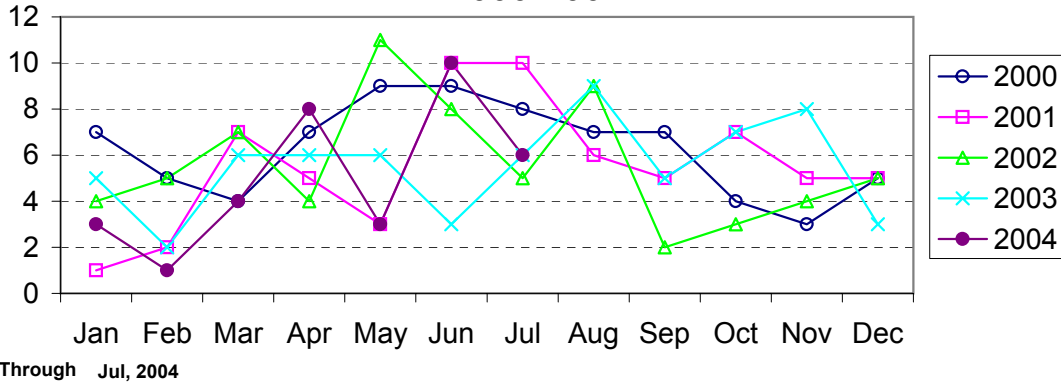


Year-to-Date Index Offenses by Type Charlotte-Mecklenburg Police Department: 2004

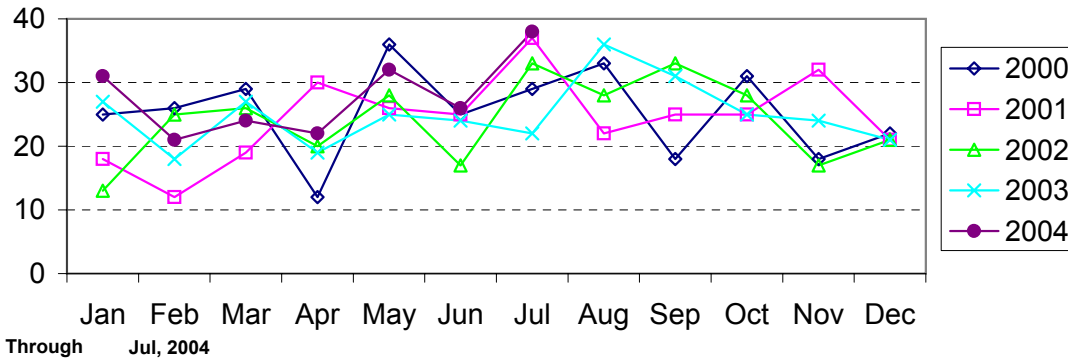


Through Jul, 2004

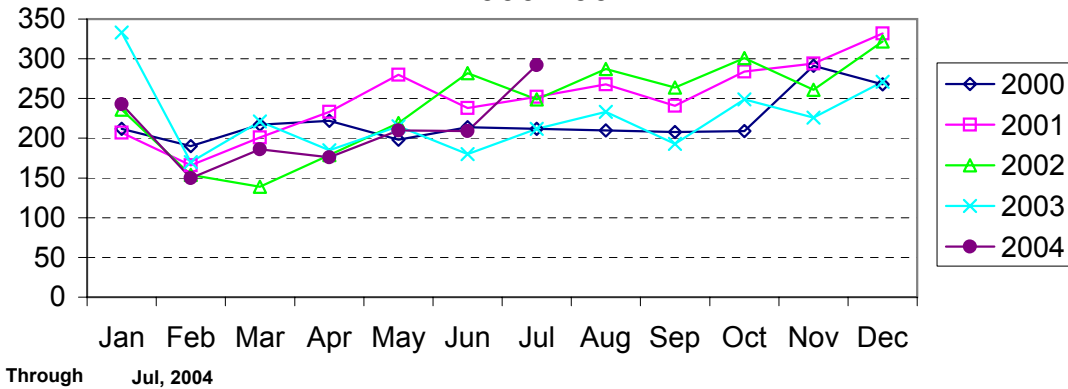
Homicide Reported by Month Charlotte-Mecklenburg Police Department: 2000-2004



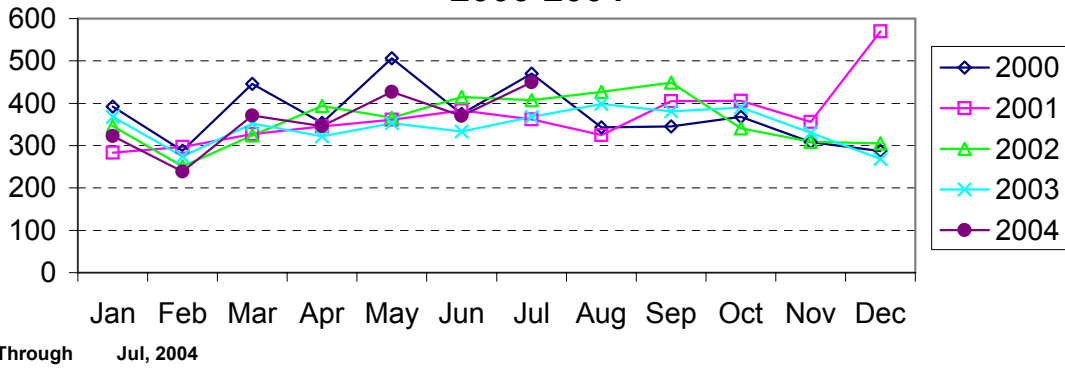
Rape Reported by Month Charlotte-Mecklenburg Police Department: 2000-2004



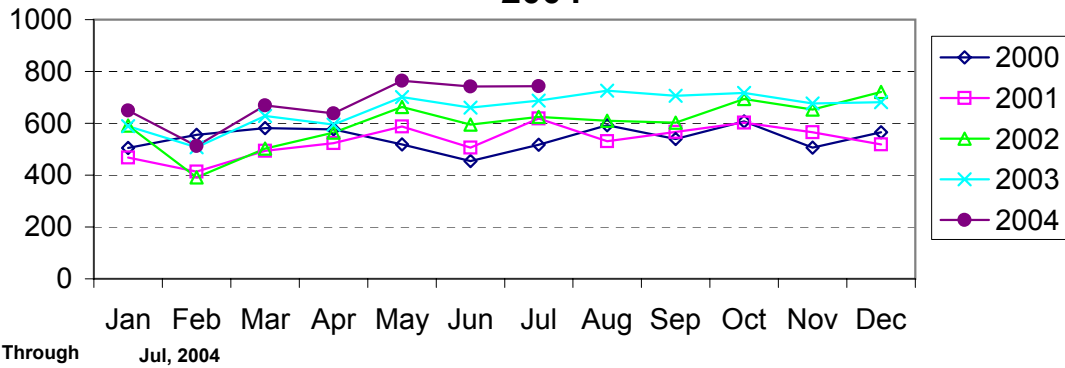
Robbery Reported by Month Charlotte-Mecklenburg Police Department: 2000-2004



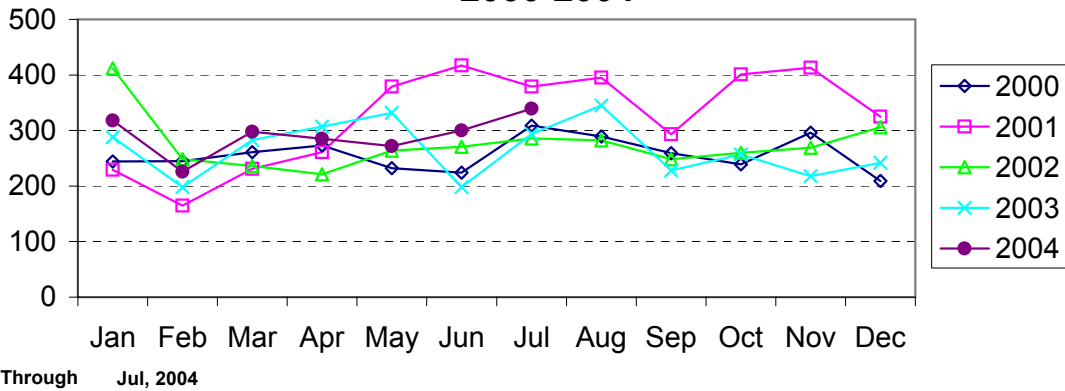
Aggravated Assault Reported by Month Charlotte-Mecklenburg Police Department: 2000-2004



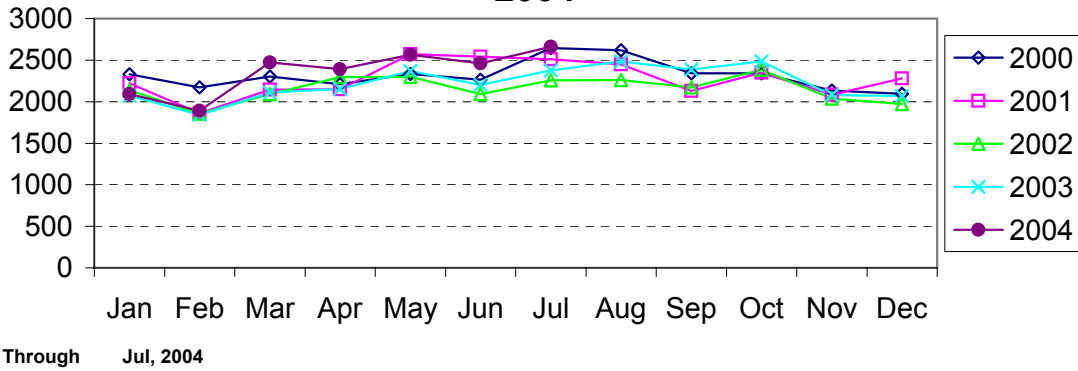
Residential Burglary Reported by Month Charlotte-Mecklenburg Police Department: 2000- 2004



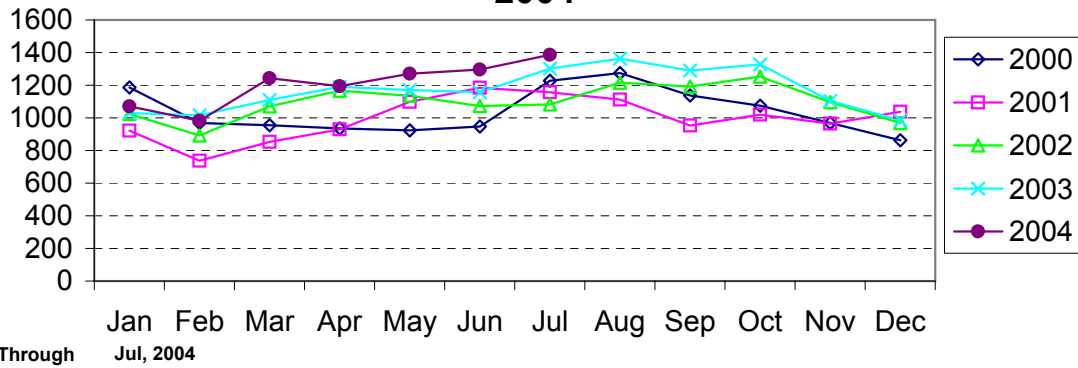
Commercial Burglary Reported by Month Charlotte-Mecklenburg Police Department: 2000-2004



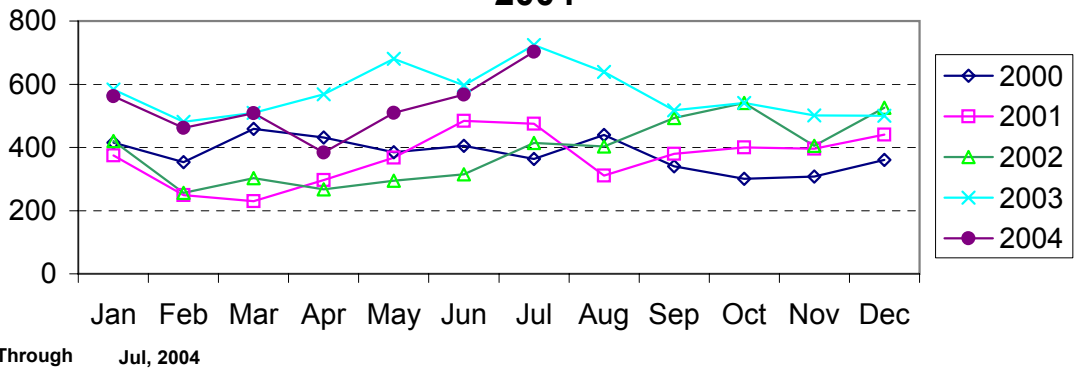
Larceny Reported by Month Charlotte-Mecklenburg Police Department: 2000-2004



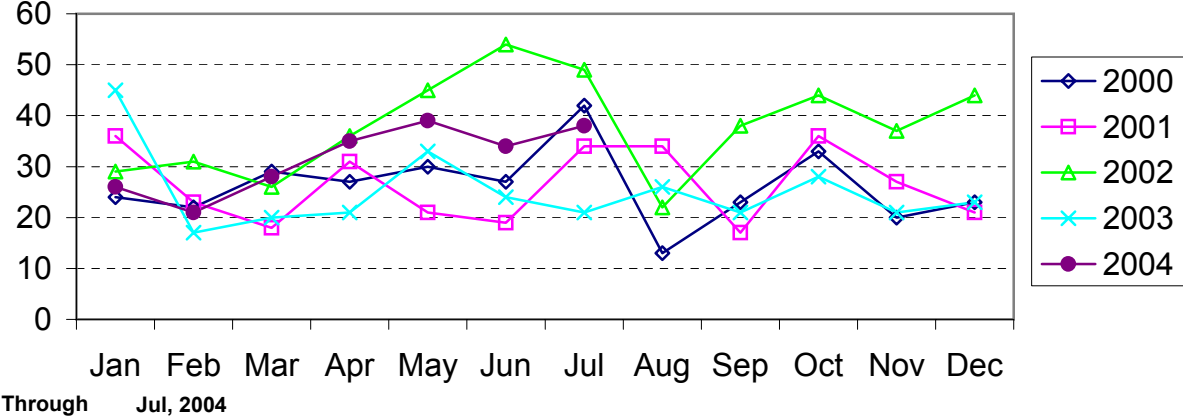
Larceny from Vehicle Reported by Month Charlotte-Mecklenburg Police Department: 2000-2004



Vehicle Theft Reported by Month Charlotte-Mecklenburg Police Department: 2000-2004



Arson Reported by Month Charlotte-Mecklenburg Police Department: 2000-2004



Index Offenses Reported by Division and Service Area of Occurrence									
West Service Area: Jan-Jul, 2003-2004									
INDEX_CATEGORIES	Westover (A2)			Freedom (A3)			West Service Area		
	2003	2004	% Change	2003	2004	% Change	2003	2004	% Change
MURDER & NON-NEGLIGENT MANSLAUGHTER	3	1	-66.7%	7	3	-57.1%	10	4	-60.0%
RAPE	10	17	70.0%	23	17	-26.1%	33	34	3.0%
ACTUAL	9	17	88.9%	18	17	-5.6%	27	34	25.9%
ATTEMPTED	1	0	-100.0%	5	0	-100.0%	6	0	-100.0%
ROBBERY	135	109	-19.3%	143	168	17.5%	278	277	-0.4%
ARMED	102	83	-18.6%	111	126	13.5%	213	209	-1.9%
STRONG-ARM	33	26	-21.2%	32	42	31.3%	65	68	4.6%
AGGRAVATED ASSAULT	233	221	-5.2%	288	293	1.7%	521	514	-1.3%
BURGLARY	484	503	3.9%	770	963	25.1%	1254	1466	16.9%
RESIDENTIAL	333	345	3.6%	497	672	35.2%	830	1017	22.5%
COMMERCIAL	151	158	4.6%	273	291	6.6%	424	449	5.9%
LARCENY	816	1011	23.9%	1256	1607	27.9%	2072	2618	26.4%
FROM AUTO	416	516	24.0%	604	777	28.6%	1020	1293	26.8%
BICYCLE	5	10	100.0%	7	7	0.0%	12	17	41.7%
SHOPLIFTING	85	86	1.2%	104	161	54.8%	189	247	30.7%
OTHERS	310	399	28.7%	541	662	22.4%	851	1061	24.7%
VEHICLE THEFT	265	236	-10.9%	460	402	-12.6%	725	638	-12.0%
ARSON	9	17	88.9%	25	23	-8.0%	34	40	17.6%
TOTALS	1955	2115	8.2%	2972	3476	17.0%	4927	5591	13.5%
VIOLENT	381	348	-8.7%	461	481	4.3%	842	829	-1.5%
PROPERTY	1574	1767	12.3%	2511	2995	19.3%	4085	4762	16.6%

Index Offenses Reported by Division and Service Area of Occurrence									
Southeast Service Area: Jan-Jul, 2003-2004									
INDEX_CATEGORIES	Providence (B1)			Independence (B3)			Southeast Service Area		
	2003	2004	% Change	2003	2004	% Change	2003	2004	% Change
MURDER & NON-NEGLIGENT MANSLAUGHTER	0	2	NA	2	2	0.0%	2	4	100.0%
RAPE	12	11	-8.3%	17	12	-29.4%	29	23	-20.7%
ACTUAL	11	11	0.0%	15	11	-26.7%	26	22	-15.4%
ATTEMPTED	1	0	-100.0%	2	1	-50.0%	3	1	-66.7%
ROBBERY	66	79	19.7%	128	119	-7.0%	194	198	2.1%
ARMED	51	60	17.6%	111	97	-12.6%	162	157	-3.1%
STRONG-ARM	15	19	26.7%	18	22	22.2%	33	41	24.2%
AGGRAVATED ASSAULT	115	106	-7.8%	189	208	10.1%	304	314	3.3%
BURGLARY	491	491	0.0%	572	581	1.6%	1063	1072	0.8%
RESIDENTIAL	307	283	-7.8%	442	441	-0.2%	749	724	-3.3%
COMMERCIAL	184	208	13.0%	130	140	7.7%	314	348	10.8%
LARCENY	985	1115	13.2%	1683	1307	-22.3%	2668	2422	-9.2%
FROM AUTO	485	493	1.6%	988	732	-25.9%	1473	1225	-16.8%
BICYCLE	6	13	116.7%	28	10	-64.3%	34	23	-32.4%
SHOPLIFTING	110	115	4.5%	145	97	-33.1%	255	212	-16.9%
OTHERS	384	494	28.6%	522	468	-10.3%	906	962	6.2%
VEHICLE THEFT	204	185	-9.3%	432	375	-13.2%	636	560	-11.9%
ARSON	9	8	-11.1%	26	21	-19.2%	35	29	-17.1%
TOTALS	1882	1997	6.1%	3049	2625	-13.9%	4931	4622	-6.3%
VIOLENT	193	198	2.6%	336	341	1.5%	529	539	1.9%
PROPERTY	1689	1799	6.5%	2713	2284	-15.8%	4402	4083	-7.2%

The data in the district breakdowns does not include a small number of offenses in which the location of the offense was unknown or was entered without a valid tract assignment. Districts are not equal in geographic size, demographics, zoning/development, and other factors that influence the rate of crimes committed in an area. Therefore, the comparison of raw offense totals across districts is not advisable.

Index Offenses Reported by Division and Service Area of Occurrence									
Northeast Service Area: Jan-Jul, 2003-2004									
INDEX_CATEGORIES	North (C1)			Hickory Grove (C3)			Northeast Service Area		
	2003	2004	% Change	2003	2004	% Change	2003	2004	% Change
MURDER & NON-NEGLIGENT MANSLAUGHTER	4	4	0.0%	3	2	-33.3%	7	6	-14.3%
RAPE	19	27	42.1%	15	23	53.3%	34	50	47.1%
ACTUAL	17	25	47.1%	14	20	42.9%	31	45	45.2%
ATTEMPTED	2	2	0.0%	1	3	200.0%	3	5	66.7%
ROBBERY	97	123	26.8%	142	128	-9.9%	239	251	5.0%
ARMED	77	99	28.6%	113	103	-8.8%	190	202	6.3%
STRONG-ARM	20	24	20.0%	29	25	-13.8%	49	49	0.0%
AGGRAVATED ASSAULT	187	203	8.6%	236	282	19.5%	423	485	14.7%
BURGLARY	713	900	26.2%	661	683	3.3%	1374	1583	15.2%
RESIDENTIAL	495	633	27.9%	502	537	7.0%	997	1170	17.4%
COMMERCIAL	218	267	22.5%	159	146	-8.2%	377	413	9.5%
LARCENY	2174	2469	13.6%	1328	1274	-4.1%	3502	3743	6.9%
FROM AUTO	1234	1402	13.6%	705	630	-10.6%	1939	2032	4.8%
BICYCLE	8	16	100.0%	11	25	127.3%	19	41	115.8%
SHOPLIFTING	188	203	8.0%	126	91	-27.8%	314	294	-6.4%
OTHERS	744	848	14.0%	486	528	8.6%	1230	1376	11.9%
VEHICLE THEFT	478	473	-1.0%	493	404	-18.1%	971	877	-9.7%
ARSON	22	31	40.9%	19	32	68.4%	41	63	53.7%
TOTALS	3694	4230	14.5%	2897	2828	-2.4%	6591	7058	7.1%
VIOLENT	307	357	16.3%	396	435	9.8%	703	792	12.7%
PROPERTY	3387	3873	14.3%	2501	2393	-4.3%	5888	6266	6.4%

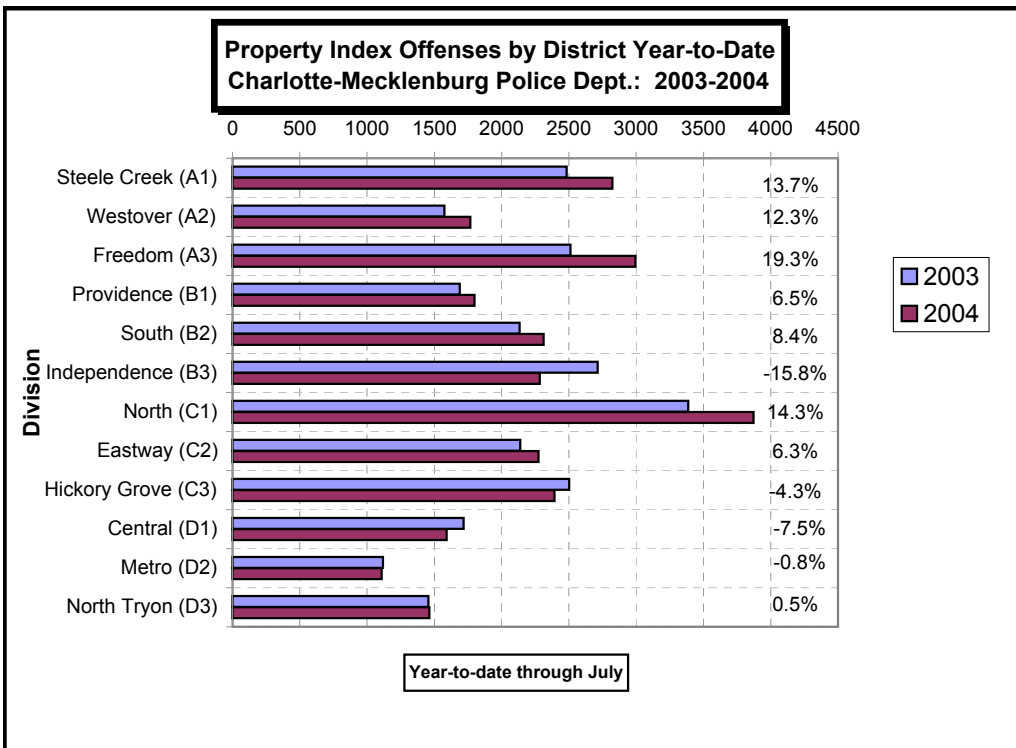
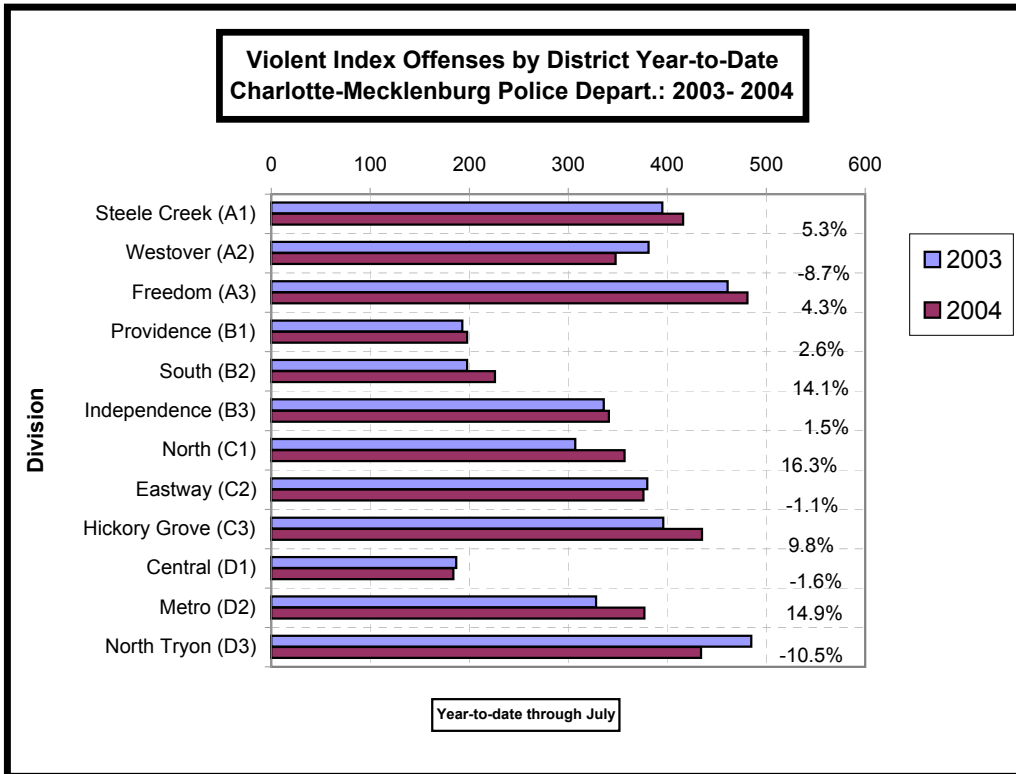
Index Offenses Reported by Division and Service Area of Occurrence									
Central Service Area: Jan-Jul, 2003-2004									
INDEX_CATEGORIES	Central (D1)			Metro (D2)			Central Service Area		
	2003	2004	% Change	2003	2004	% Change	2003	2004	% Change
MURDER & NON-NEGLIGENT MANSLAUGHTER	2	1	-50.0%	3	6	100.0%	5	7	40.0%
RAPE	10	12	20.0%	11	15	36.4%	21	27	28.6%
ACTUAL	10	11	10.0%	9	14	55.6%	19	25	31.6%
ATTEMPTED	0	1	NA	2	1	-50.0%	2	2	0.0%
ROBBERY	69	71	2.9%	101	120	18.8%	170	191	12.4%
ARMED	41	40	-2.4%	77	101	31.2%	118	141	19.5%
STRONG-ARM	28	31	10.7%	24	19	-20.8%	52	50	-3.8%
AGGRAVATED ASSAULT	106	100	-5.7%	213	236	10.8%	319	336	5.3%
BURGLARY	240	217	-9.6%	314	350	11.5%	554	567	2.3%
RESIDENTIAL	126	87	-31.0%	238	253	6.3%	364	340	-6.6%
COMMERCIAL	114	130	14.0%	76	97	27.6%	190	227	19.5%
LARCENY	1164	1197	2.8%	558	554	-0.7%	1722	1751	1.7%
FROM AUTO	658	649	-1.4%	304	246	-19.1%	962	895	-7.0%
BICYCLE	3	10	233.3%	8	3	-62.5%	11	13	18.2%
SHOPLIFTING	32	43	34.4%	19	46	142.1%	51	89	74.5%
OTHERS	471	495	5.1%	227	259	14.1%	698	754	8.0%
VEHICLE THEFT	303	173	-42.9%	233	193	-17.2%	536	366	-31.7%
ARSON	11	3	-72.7%	12	11	-8.3%	23	14	-39.1%
TOTALS	1905	1774	-6.9%	1445	1485	2.8%	3350	3259	-2.7%
VIOLENT	187	184	-1.6%	328	377	14.9%	515	561	8.9%
PROPERTY	1718	1590	-7.5%	1117	1108	-0.8%	2835	2698	-4.8%

The data in the district breakdowns does not include a small number of offenses in which the location of the offense was unknown or was entered without a valid tract assignment. Districts are not equal in geographic size, demographics, zoning/development, and other factors that influence the rate of crimes committed in an area. Therefore, the comparison of raw offense totals across districts is not advisable.

Index Offenses Reported by Division and Service Area of Occurrence									
East Service Area: Jan-Jul, 2003-2004									
INDEX_CATEGORIES	Eastway (C2)			North Tryon (D3)			East Service Area		
	2003	2004	% Change	2003	2004	% Change	2003	2004	% Change
MURDER & NON-NEGLIGENT MANSLAUGHTER	1	3	200.0%	4	6	50.0%	5	9	80.0%
RAPE	9	9	0.0%	12	13	8.3%	21	22	4.8%
ACTUAL	8	6	-25.0%	12	12	0.0%	20	18	-10.0%
ATTEMPTED	1	3	200.0%	0	1	NA	1	4	300.0%
ROBBERY	198	170	-14.1%	193	159	-17.6%	391	329	-15.9%
ARMED	156	126	-19.2%	155	121	-21.9%	311	247	-20.6%
STRONG-ARM	42	44	4.8%	38	38	0.0%	80	82	2.5%
AGGRAVATED ASSAULT	172	194	12.8%	276	256	-7.2%	448	450	0.4%
BURGLARY	518	550	6.2%	422	398	-5.7%	940	948	0.9%
RESIDENTIAL	367	381	3.8%	289	277	-4.2%	656	658	0.3%
COMMERCIAL	151	169	11.9%	133	121	-9.0%	284	290	2.1%
LARCENY	1319	1388	5.2%	686	794	15.7%	2005	2182	8.8%
FROM AUTO	604	480	-20.5%	353	380	7.6%	957	860	-10.1%
BICYCLE	11	18	63.6%	6	8	33.3%	17	26	52.9%
SHOPLIFTING	304	472	55.3%	44	66	50.0%	348	538	54.6%
OTHERS	400	418	4.5%	283	340	20.1%	683	758	11.0%
VEHICLE THEFT	296	314	6.1%	341	265	-22.3%	637	579	-9.1%
ARSON	6	22	266.7%	6	6	0.0%	12	28	133.3%
TOTALS	2519	2650	5.2%	1940	1897	-2.2%	4459	4547	2.0%
VIOLENT	380	376	-1.1%	485	434	-10.5%	865	810	-6.4%
PROPERTY	2139	2274	6.3%	1455	1463	0.5%	3594	3737	4.0%

Index Offenses Reported by Division and Service Area of Occurrence									
South Service Area: Jan-Jul, 2003-2004									
INDEX_CATEGORIES	Steele Creek (A1)			South (B2)			South Service Area		
	2003	2004	% Change	2003	2004	% Change	2003	2004	% Change
MURDER & NON-NEGLIGENT MANSLAUGHTER	3	4	33.3%	2	1	-50.0%	5	5	0.0%
RAPE	14	18	28.6%	11	13	18.2%	25	31	24.0%
ACTUAL	12	16	33.3%	9	13	44.4%	21	29	38.1%
ATTEMPTED	2	2	0.0%	2	0	-100.0%	4	2	-50.0%
ROBBERY	165	126	-23.6%	71	81	14.1%	236	207	-12.3%
ARMED	120	98	-18.3%	52	64	23.1%	172	162	-5.8%
STRONG-ARM	35	28	-20.0%	19	17	-10.5%	54	45	-16.7%
AGGRAVATED ASSAULT	213	268	25.8%	114	131	14.9%	327	399	22.0%
BURGLARY	510	507	-0.6%	496	492	-0.8%	1006	999	-0.7%
RESIDENTIAL	342	361	5.6%	382	382	0.0%	724	743	2.6%
COMMERCIAL	168	146	-13.1%	114	110	-3.5%	282	256	-9.2%
LARCENY	1585	1949	23.0%	1401	1547	10.4%	2986	3496	17.1%
FROM AUTO	762	1108	45.4%	779	866	11.2%	1541	1974	28.1%
BICYCLE	13	11	-15.4%	5	9	80.0%	18	20	11.1%
SHOPLIFTING	239	257	7.5%	101	87	-13.9%	340	344	1.2%
OTHERS	571	573	0.4%	516	585	13.4%	1087	1158	6.5%
VEHICLE THEFT	372	344	-7.5%	222	252	13.5%	594	596	0.3%
ARSON	16	23	43.8%	14	22	57.1%	30	45	50.0%
TOTALS	2878	3239	12.5%	2331	2539	8.9%	5209	5778	10.9%
VIOLENT	395	416	5.3%	198	226	14.1%	593	642	8.3%
PROPERTY	2483	2823	13.7%	2133	2313	8.4%	4616	5136	11.3%

The data in the district breakdowns does not include a small number of offenses in which the location of the offense was unknown or was entered without a valid tract assignment. Districts are not equal in geographic size, demographics, zoning/development, and other factors that influence the rate of crimes committed in an area. Therefore, the comparison of raw offense totals across districts is not advisable.



The data in the district breakdowns does not include a small number of offenses in which the location of the offense was unknown or was entered without a valid tract assignment. Districts are not equal in geographic size, demographics, zoning/development, and other factors that influence the rate of crimes committed in an area. Therefore, the comparison of raw offense totals across districts is not advisable.

Arrests by Charlotte-Mecklenburg Police Department
Year-To-Date: 2003-2004
(Through July)

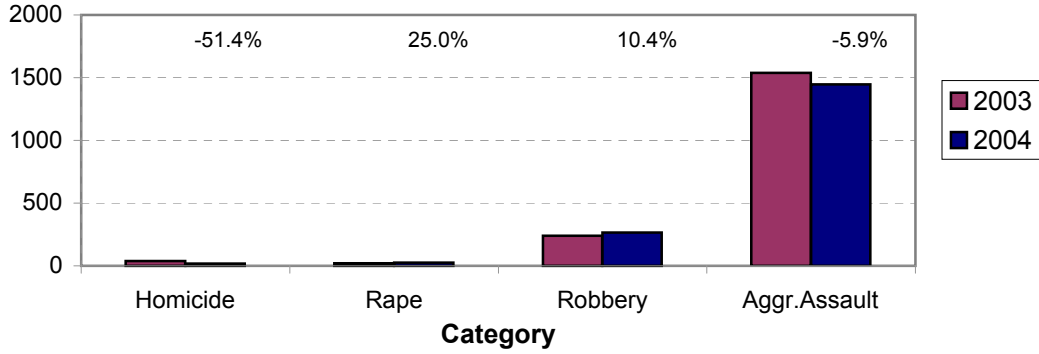
CATEGORY	ADULTS (AGE 18 & OLDER):			JUVENILES (UNDER 18):			TOTAL ARRESTS:		
	2003 Y-T-D	2004 Y-T-D	% CHANGE	2003 Y-T-D	2004 Y-T-D	% CHANGE	2003 Y-T-D	2004 Y-T-D	% CHANGE
Murder/Non-Negligent Manslaughter	34	18	-47.1%	3	0	-100.0%	37	18	-51.4%
Negligent & Vehicular Manslaughter	1	3	200.0%	0	0	NA	1	3	200.0%
Rape	16	23	43.8%	4	2	-50.0%	20	25	25.0%
Robbery	174	179	2.9%	66	86	30.3%	240	265	10.4%
Aggravated Assault	1334	1252	-6.1%	203	194	-4.4%	1537	1446	-5.9%
Burglary	291	325	11.7%	151	137	-9.3%	442	462	4.5%
Larceny	851	907	6.6%	405	372	-8.1%	1256	1279	1.8%
Vehicle Theft	104	49	-52.9%	248	94	-62.1%	352	143	-59.4%
Non-Aggravated Assault	1009	1097	8.7%	521	484	-7.1%	1530	1581	3.3%
Arson	16	11	-31.3%	16	19	18.8%	32	30	-6.3%
Forgery/Counterfiet	64	82	28.1%	3	2	-33.3%	67	84	25.4%
Fraud	303	320	5.6%	6	6	0.0%	309	326	5.5%
Embezzlement	63	58	-7.9%	4	8	100.0%	67	66	-1.5%
Stolen Property	330	283	-14.2%	98	61	-37.8%	428	344	-19.6%
Vandalism	153	138	-9.8%	114	120	5.3%	267	258	-3.4%
Weapons	291	262	-10.0%	42	37	-11.9%	333	299	-10.2%
Prostitution	195	189	-3.1%	2	8	300.0%	197	197	0.0%
Sex Offenses	125	119	-4.8%	30	8	-73.3%	155	127	-18.1%
Drugs	1958	1622	-17.2%	189	146	-22.8%	2147	1768	-17.7%
Gambling	19	12	-36.8%	0	0	NA	19	12	-36.8%
Offenses vs. Family	6	3	-50.0%	0	1	NA	6	4	-33.3%
DUI	1240	1163	-6.2%	7	7	0.0%	1247	1170	-6.2%
Liquor	86	129	50.0%	8	6	-25.0%	94	135	43.6%
Disorder Conduct	321	325	1.2%	159	184	15.7%	480	509	6.0%
Other Non-Traffic	4303	4667	8.5%	461	472	2.4%	4764	5139	7.9%
VIOLENT INDEX¹	1558	1472	-5.5%	276	282	2.2%	1834	1754	-4.4%
PROPERTY INDEX²	1262	1292	2.4%	820	622	-24.1%	2082	1914	-8.1%
INDEX SUBTOTAL	2820	2764	-2.0%	1096	904	-17.5%	3916	3668	-6.3%
PART 2 SUBTOTAL³	10467	10472	0.0%	1644	1550	-5.7%	12111	12022	-0.7%
TOTAL	13287	13236	-0.4%	2740	2454	-10.4%	16027	15690	-2.1%

¹Violent Index includes murder and non-negligent manslaughter, rape, robbery, and aggravated assault.

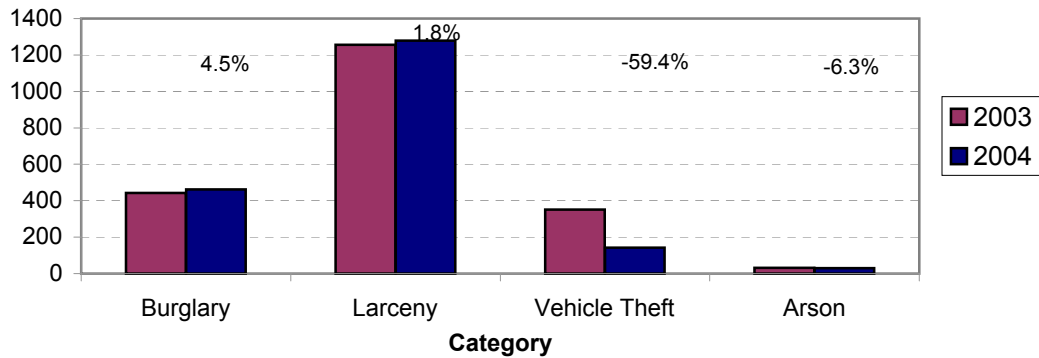
²Property Index includes burglary, larceny, vehicle theft, and arson.

³Part 2 crimes include non-traffic crimes not counted in the Index totals.

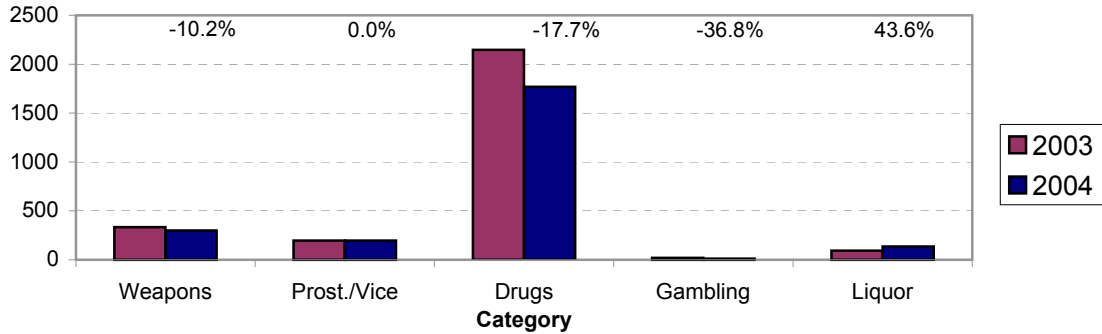
**Violent Index Arrests Year-to-Date
Charlotte-Mecklenburg Police Department: 2003-2004
(Through July)**



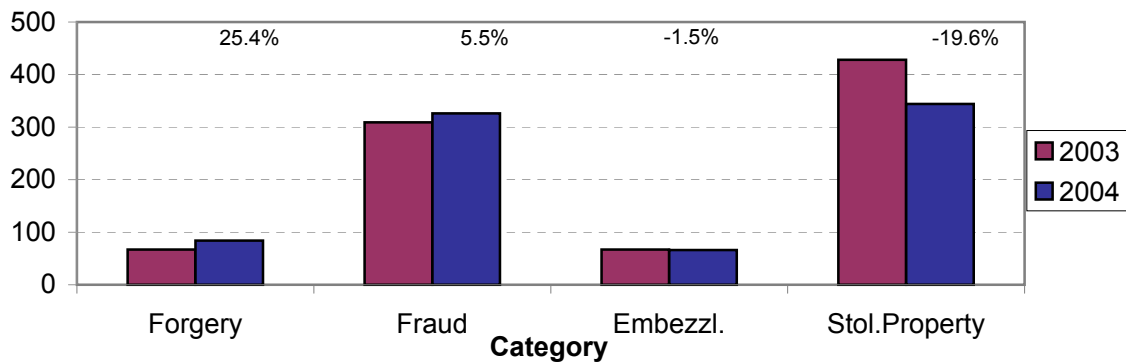
**Property Index Arrests Year-to-Date
Charlotte-Mecklenburg Police Department: 2003-2004
(Through July)**



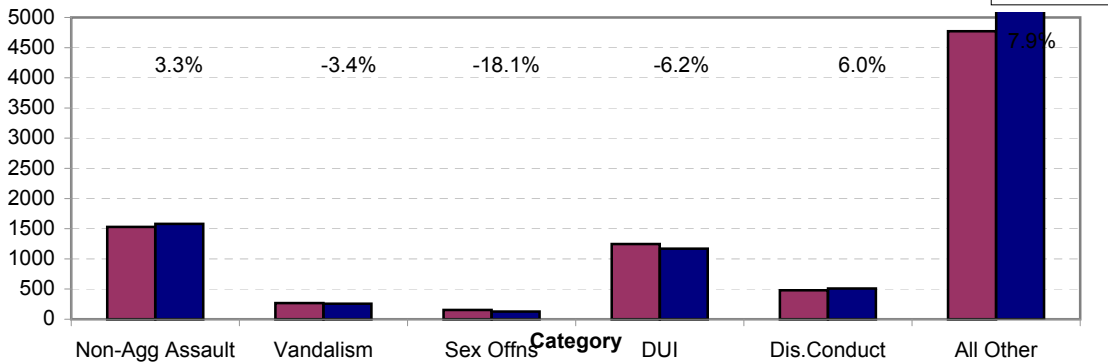
**Arrests for Vice/CCW/Drugs/Etc. Year-to-Date
Charlotte-Mecklenburg Police Department: 2003 - 2004
(Through July)**



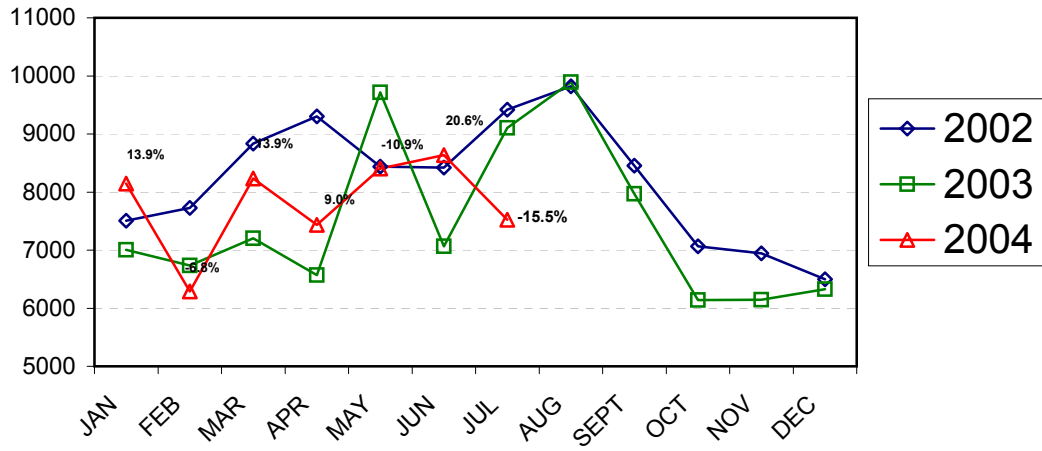
**Arrests for Property/White Collar Crime Year-to-Date
Charlotte-Mecklenburg Police Department: 2003 - 2004
(Through July)**



**Arrests for Other Categories Year-to-Date
Charlotte-Mecklenburg Police Department: 2003 - 2004
(Through July)**



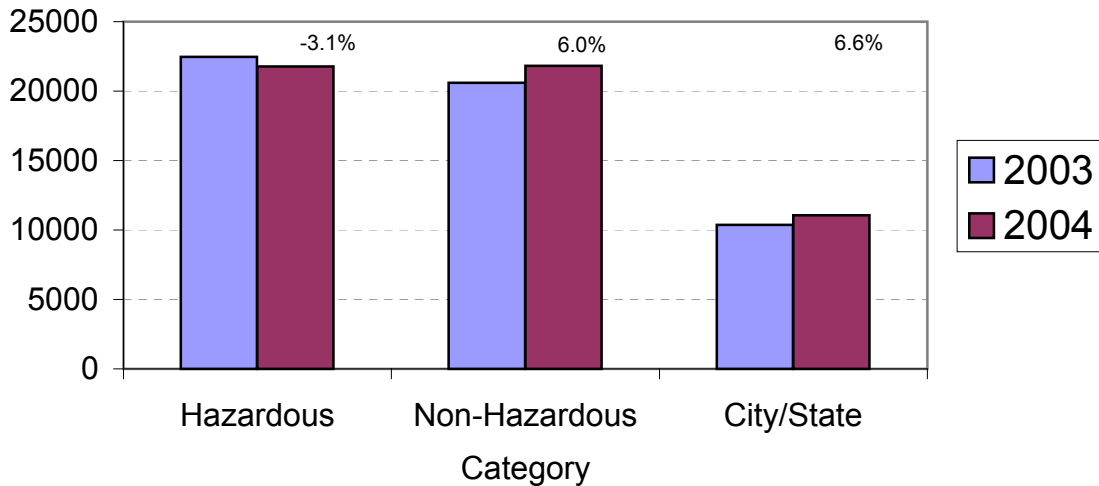
Total Citation Enforcement by Month Charlotte-Mecklenburg Police Dept.: 2002-2004



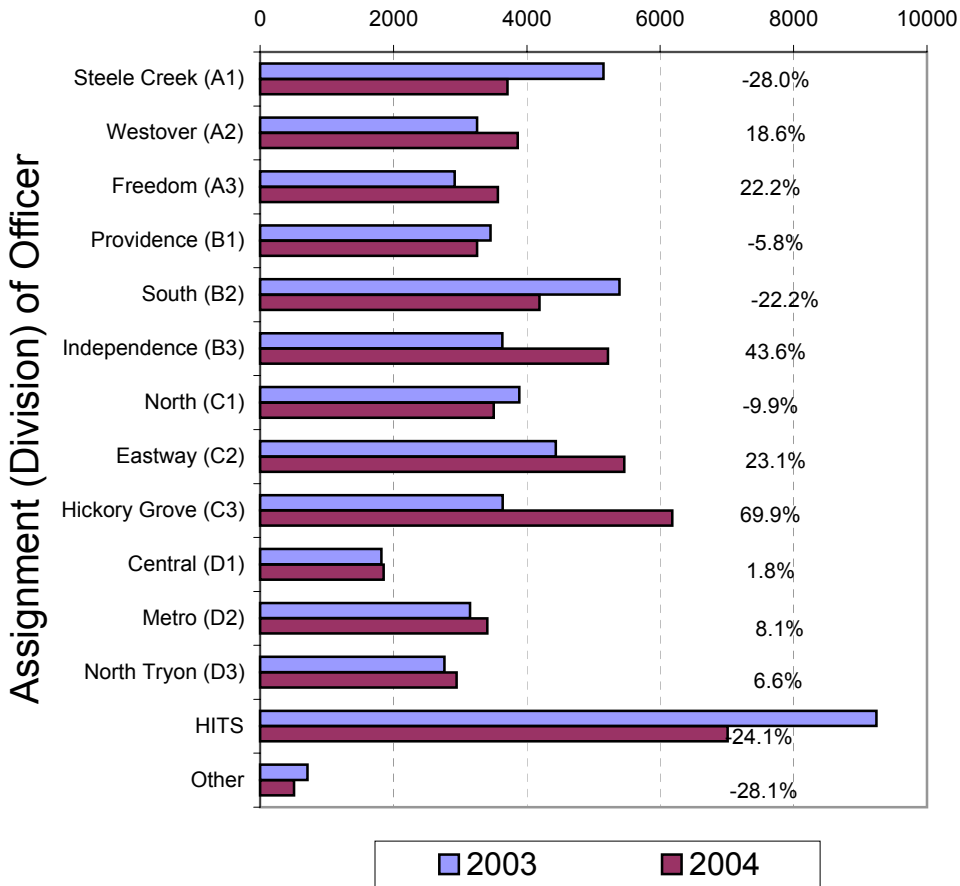
(Through July, 2004)

(Includes Hazardous, Non-Hazardous, and City/State Citations)

CMPD Citation Enforcement by Category Year-to-Date, 2003 - 2004 (Through July, 2004)



**Citations Issued Year-to-Date by CMPD Divisions
2003 - 2004
(Through July, 2004)**

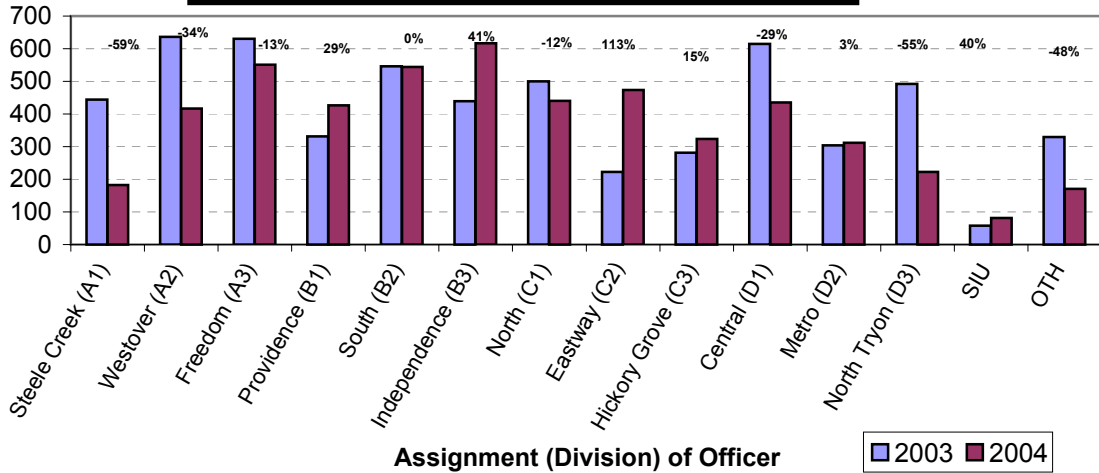


Note: 2003 and 2004 data for HITS and Other was adjusted in April, 2004.

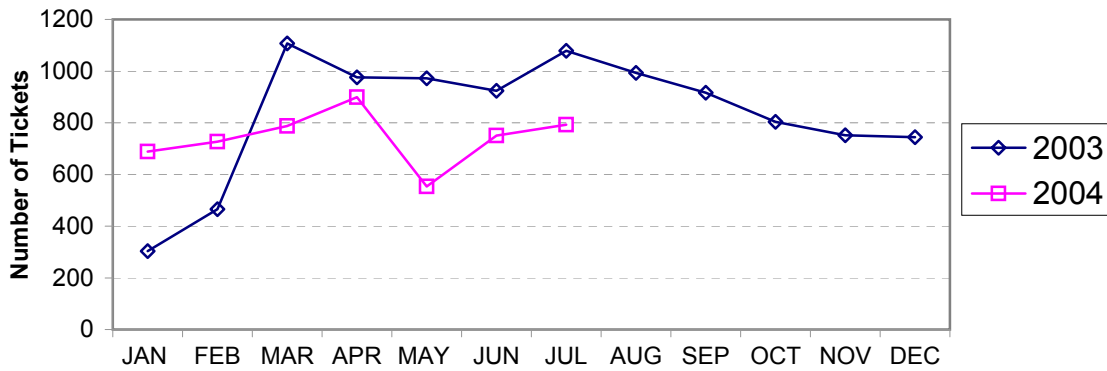
**Citations Issued by the Charlotte Mecklenburg Police Dept. Year-to-Date
(Through July, 2004)**

Total Citations	2003	2004	% Change
Hazardous	22,471	21,785	-3.1%
Non-Hazardous	20,599	21,826	6.0%
Other City/State Statute/Ordinance	10,367	11,052	6.6%
Total	53,437	54,663	2.3%

**Warning Tickets Issued by CMPD Division
Year-to-Date, 2003 - 2004
Through July, 2004**



**Total Warning Tickets Issued by CMPD
By Month: 2003 - 2004**



**Warning Tickets Issued by CMPD Year-to-Date
Through July, 2004**

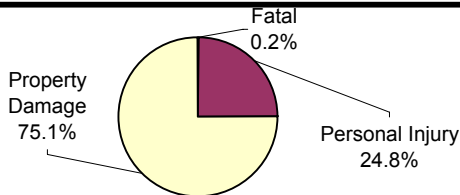
	2003	2004	% Change
Total Warning Tickets	5828	5197	-10.8%

**Traffic Collison Reports
Charlotte-Mecklenburg Police Department
Year-to-Date: 2003-2004
(Through July)**

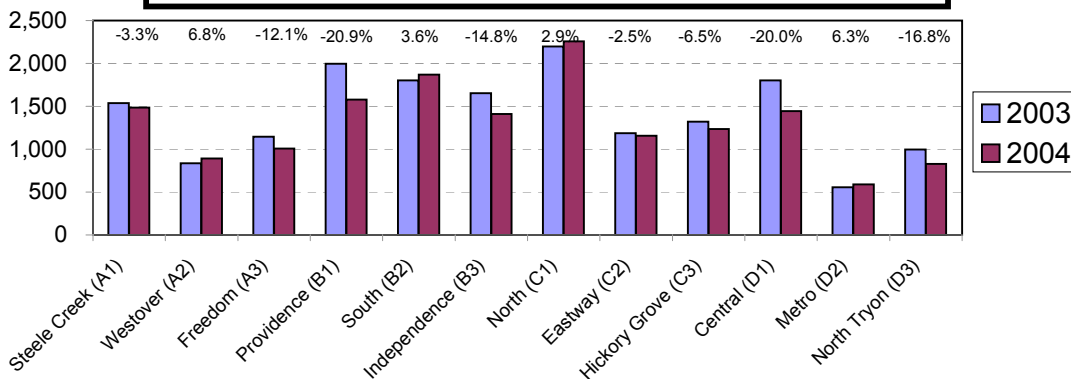
<u>Type</u>	<u>2003</u>	<u>2004</u>	<u>% Change</u>
Fatal Collisions	30	24	-20.0%
Vehicle Occupants Killed	32	22	-31.3%
Pedestrians Killed	3	3	0.0%
Personal Injury Collisions	4163	3900	-6.4%
Property Damage Collisions	12957	11876	-8.3%
Total Collisions	17150	15800	-7.9%

* The number of fatal collisions and the number of persons killed in those incidents is taken from the HITS file. Their records are updated for deaths that occur after the initial report is filed.

**Traffic Collisions Reported by Type
Charlotte-Mecklenburg Police Department:
2004 Year-to-Date
(Through July)**



**Traffic Collisions Reported by Charlotte-Mecklenburg Police Dept.
Year-to-Date By Location (Division) : 2003 -2004
(Through July)**



Uniform Crime Reporting Procedures:

The Charlotte-Mecklenburg Police Department reports offense and arrest statistics in accordance with standard Uniform Crime Reporting (UCR) guidelines. UCR policy states that any adjustments to previous months can be made on the current month's report:

...In tabulating crime counts, an agency may find that offense totals for past months require adjustments due to developments in the investigation or other handling of the matter. It may be necessary to adjust totals reported to UCR for the past month or prior months. Needed adjustments can be made on the current month's report and do not affect the reliability of the figures in that such adjustments tend to equalize each other from month to month over a period of time.

- *Uniform Crime Reporting Handbook*, FBI, 1984, p. 42-43

We are required to report crime monthly to the UCR program, and we do therefore make an effort to process monthly changes in a timely manner. However, occasionally due to the review and processing required for reclassifying, unfounding or clearing cases, the current month's totals may reflect the processing of a backlog of these changes from previous months.

Users of the data are cautioned that conclusions about substantial changes in crime trends or in clearance rates based on only a single month's data or trend may reflect some of these adjustments. For this reason, in addition to the monthly and year-to-date trends on Page 1, the monthly report routinely includes a comparison for the previous 12 months (p. 4), as well as graphs that provide seasonal/monthly comparisons over a five-year period (p. 5-8).

We make an effort to present the most accurate information available at the time this report is published. Please notify the Research, Planning, and Analysis office if you have any questions about the data in this report or an error that was missed in proofing the report.

The division names adopted in 2003 are used in this report. For ease of use, they also include the old district designations in parentheses.