

**CHARLOTTE-MECKLENBURG POLICE DEPARTMENT
MONTHLY SUMMARY REPORT
MAY, 2004**

**Darrel Stephens
Chief of Police**

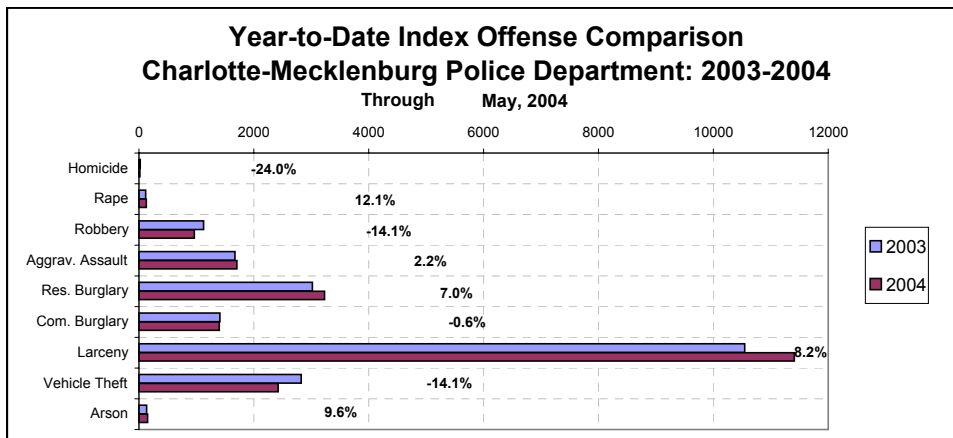
INDEX OFFENSES REPORTED TO CHARLOTTE-MECKLENBURG POLICE DEPARTMENT

May, 2004 INDEX OFFENSES	# THIS MONTH	% OF ALL INDEX	# LAST MONTH	MONTHLY % CHANGE	SAME MONTH LAST YEAR	MONTHLY % CHANGE	THIS YEAR TO DATE	LAST YEAR TO DATE	ANNUAL % CHANGE
HOMICIDE (MURDER & NON- NEGLIGENT MANSLAUGHTER)	3	0.1%	8	-62.5%	6	-50.0%	19	25	-24.0%
RAPE TOTAL	32	0.7%	22	45.5%	25	28.0%	130	116	12.1%
ACTUAL	29	0.6%	22	31.8%	25	16.0%	123	109	12.8%
ATTEMPT	3	0.1%	0	NA	0 NA		7	7	0.0%
ROBBERY TOTAL	210	4.4%	176	19.3%	215	-2.3%	965	1124	-14.1%
ARMED	154	3.2%	145	6.2%	169	-8.9%	729	873	-16.5%
STRONG-ARM	56	1.2%	31	80.6%	46	21.7%	236	251	-6.0%
AGGRAVATED ASSAULT TOTAL	427	8.9%	346	23.4%	353	21.0%	1706	1669	2.2%
BURGLARY TOTAL	1036	21.5%	923	12.2%	1033	0.3%	4631	4429	4.6%
RESIDENTIAL	764	15.9%	638	19.7%	701	9.0%	3232	3021	7.0%
COMMERCIAL	272	5.6%	285	-4.6%	332	-18.1%	1399	1408	-0.6%

FORCE	834	17.3%	735	13.5%	805	3.6%	3690	3532	4.5%
NO FORCE	146	3.0%	135	8.1%	169	-13.6%	657	617	6.5%
ATTEMPT	56	1.2%	53	5.7%	59	-5.1%	284	280	1.4%
LARCENY TOTAL	2564	53.2%	2393	7.1%	2368	8.3%	11412	10546	8.2%
\$200 AND OVER	1211	25.1%	1164	4.0%	1169	3.6%	5472	5198	5.3%
\$50 TO \$200	481	10.0%	467	3.0%	446	7.8%	2118	1937	9.3%
UNDER \$50	872	18.1%	762	14.4%	753	15.8%	3822	3411	12.0%

FROM AUTO	1271	26.4%	1194	6.4%	1171	8.5%	5761	5516	4.4%
BICYCLE	22	0.5%	22	0.0%	22	0.0%	84	67	25.4%
SHOPLIFTING	261	5.4%	257	1.6%	242	7.9%	1237	1097	12.8%
OTHERS	1010	21.0%	920	9.8%	933	8.3%	4330	3866	12.0%
VEHICLE THEFT TOTAL	509	10.6%	384	32.6%	681	-25.3%	2425	2822	-14.1%
ARSON TOTAL	39	0.8%	35	11.4%	33	18.2%	149	136	9.6%
TOTALS	4820	100.0%	4287	12.4%	4714	2.2%	21437	20867	2.7%
VIOLENT PROPERTY	672	13.9%	552	21.7%	599	12.2%	2820	2934	-3.9%
PROPERTY	4148	86.1%	3735	11.1%	4115	0.8%	18617	17933	3.8%

NOTE: These totals include offenses reported to the Charlotte-Mecklenburg Police Department in accordance with the Uniform Crime Reporting Program. Totals for homicide do not include cases investigated by the police but classed by UCR guidelines as negligent manslaughter or as "justifiable homicide."

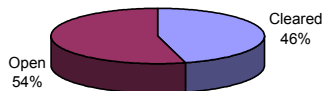


INDEX CLEARANCES REPORTED BY THE CHARLOTTE-MECKLENBURG POLICE DEPARTMENT

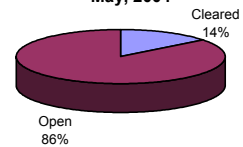
May, 2004 INDEX CLEARANCES	THIS MONTH:		LAST MONTH:		SAME MO. LAST YR:		THIS YEAR TO DATE:		LAST YEAR TO DATE:	
	NO.	%	NO.	%	NO.	%	NO.	%	NO.	%
MURDER & NON-NEGLIGENT MANSLAUGHTER	3	100.0%	0	0.0%	3	50.0%	8	42.1%	14	56.0%
RAPE TOTAL	23	71.9%	7	31.8%	1	4.0%	91	70.0%	49	42.2%
ACTUAL	21	72.4%	7	31.8%	1	4.0%	83	67.5%	46	42.2%
ATTEMPT	2	66.7%	0	#DIV/0!	0	#DIV/0!	8	114.3%	3	42.9%
ROBBERY TOTAL	56	26.7%	35	19.9%	27	12.6%	302	31.3%	198	17.6%
ARMED	44	28.6%	28	19.3%	10	5.9%	223	30.6%	128	14.7%
STRONG-ARM	12	21.4%	7	22.6%	17	37.0%	79	33.5%	70	27.9%
AGGRAVATED ASSAULT TOTAL	195	45.7%	139	40.2%	104	29.5%	894	52.4%	768	46.0%
BURGLARY TOTAL	112	10.8%	126	13.7%	66	6.4%	514	11.1%	405	9.1%
RESIDENTIAL	104	13.6%	104	16.3%	48	6.8%	838	25.9%	280	9.3%
COMMERCIAL	8	2.9%	22	7.7%	18	5.4%	76	5.4%	125	8.9%
LARCENY TOTAL	508	19.8%	320	13.4%	208	8.8%	1637	14.3%	1201	11.4%
FROM AUTO	48	3.8%	34	2.8%	19	1.6%	171	3.0%	148	2.7%
BICYCLE	3	13.6%	1	4.5%	1	4.5%	7	8.3%	8	11.9%
SHOPLIFTING	191	73.2%	170	66.1%	132	54.5%	748	60.5%	604	55.1%
OTHERS	266	26.3%	115	12.5%	56	6.0%	711	16.4%	441	11.4%
VEHICLE THEFT TOTAL	106	20.8%	102	26.6%	111	16.3%	488	20.1%	468	16.6%
ARSON TOTAL	5	12.8%	16	45.7%	10	30.3%	41	27.5%	45	33.1%
TOTALS	1008	20.9%	745	17.4%	530	11.2%	3975	18.5%	3148	15.1%
VIOLENT PROPERTY	277	41.2%	181	32.8%	135	22.5%	1295	45.9%	1029	35.1%
	731	17.6%	564	15.1%	395	9.6%	2680	14.4%	2119	11.8%

NOTE: Clearances are reported in accordance with Uniform Crime Report guidelines. Since clearances are not counted until they are entered into the Records system, any delays in processing may result in some clearances being reported in succeeding months.

**Year-to-Date Violent Index Clearance Rate
Charlotte-Mecklenburg Police Department: 2004
May, 2004**

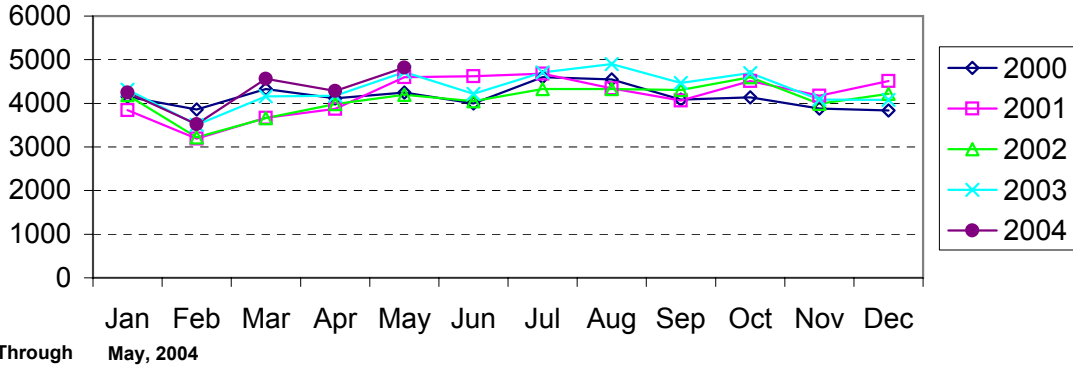


**Year-to-Date Property Index Clearance Rate
Charlotte-Mecklenburg Police Department: 2004
May, 2004**

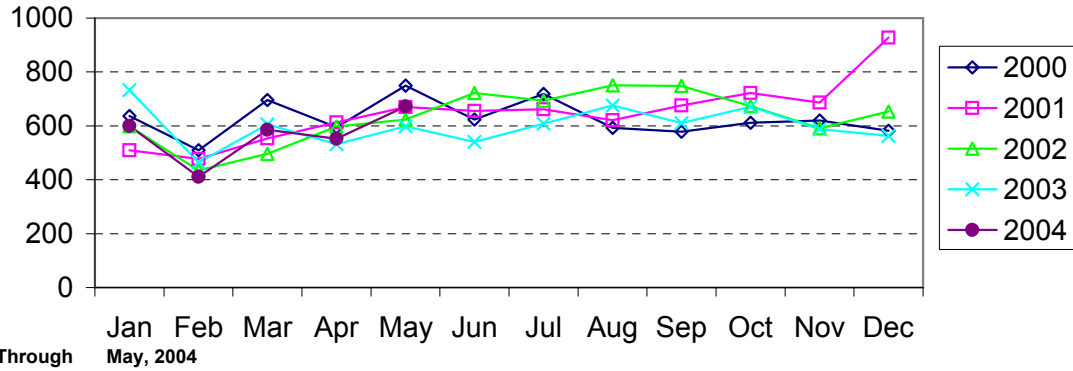


Clearance rates for crime reporting are calculated by dividing the number of crimes cleared during a designated time span by the number of crimes reported in the same period and converting the result to a percentage (multiplying by 100). Since cases from previous reporting periods can be cleared during the designated time span, the rate may be higher than 100%.

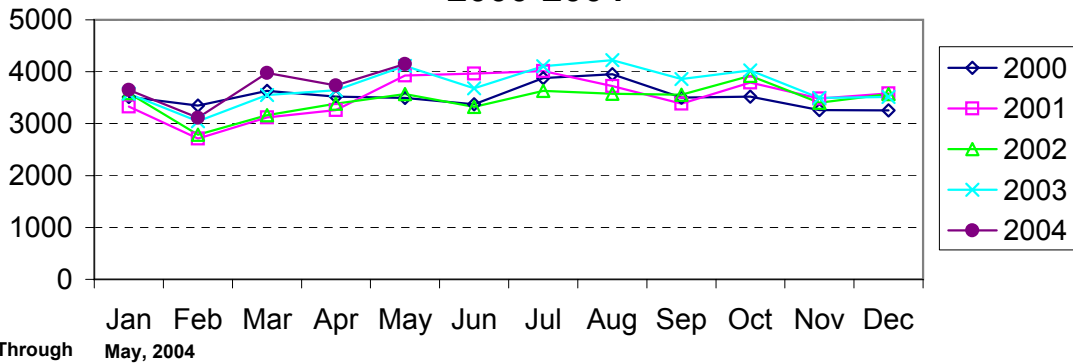
Index Offenses Reported by Month Charlotte-Mecklenburg Police Department: 2000-2004



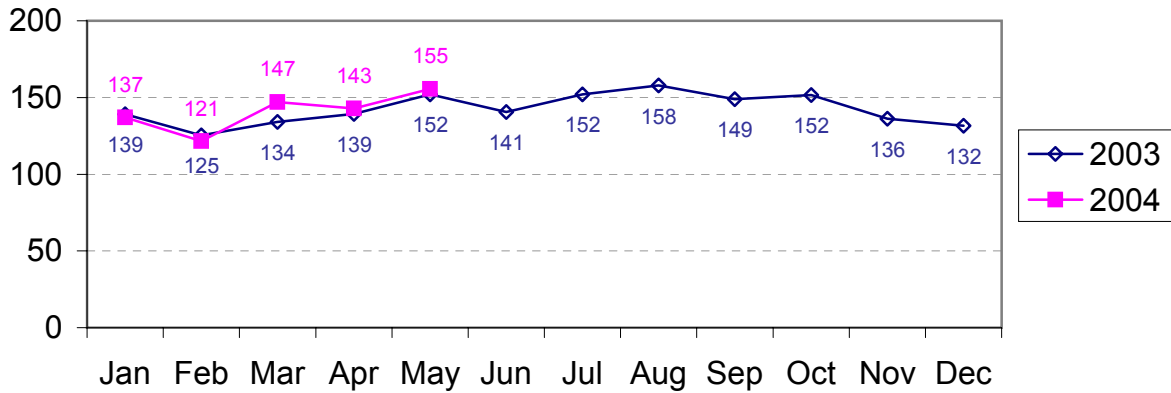
Violent Index Offenses Reported by Month Charlotte-Mecklenburg Police Department: 2000-2004



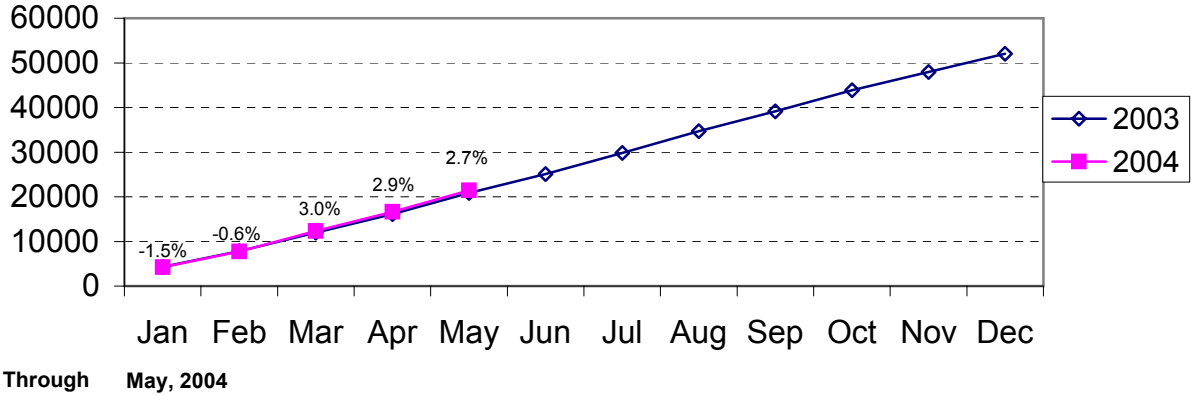
Property Index Offenses Reported by Month Charlotte-Mecklenburg Police Department: 2000-2004



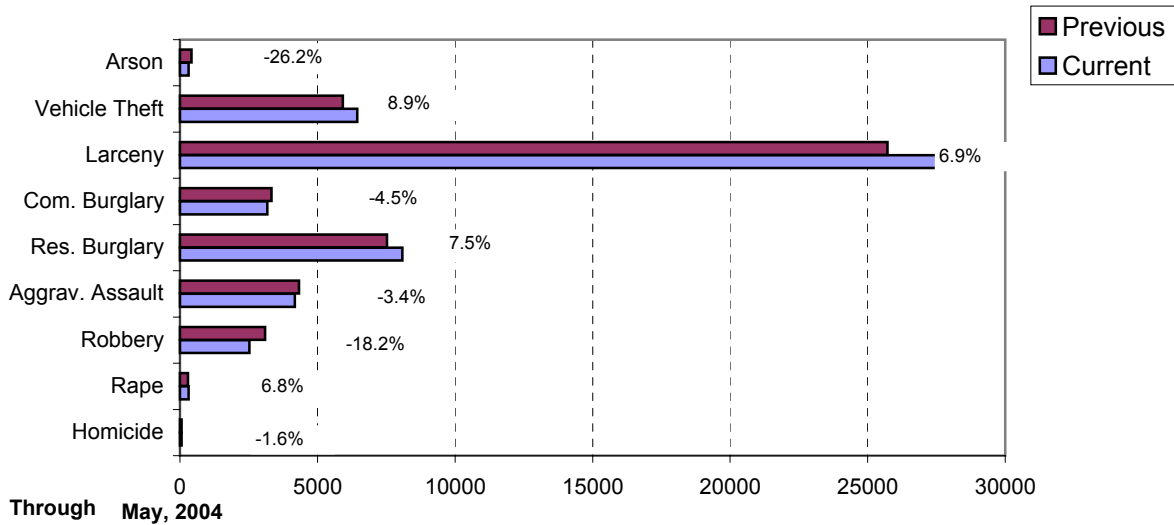
Index Offense Per Day Average by Month Charlotte-Mecklenburg Police Department: 2003-2004



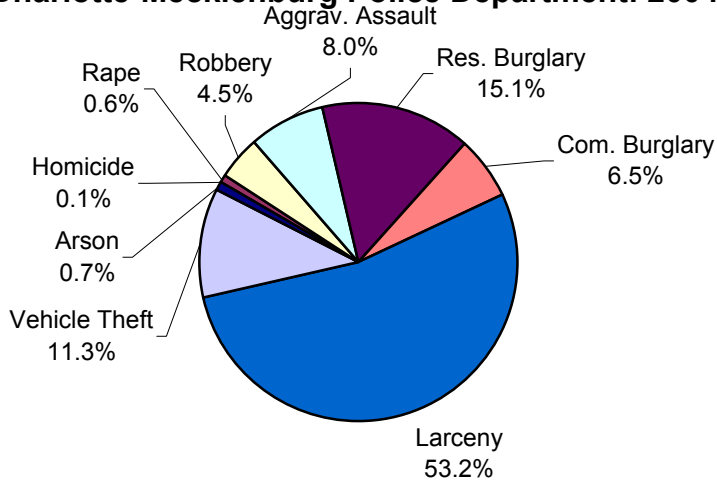
Index Offenses Year-to-Date Cumulative Totals Charlotte-Mecklenburg Police Department: 2002-2003



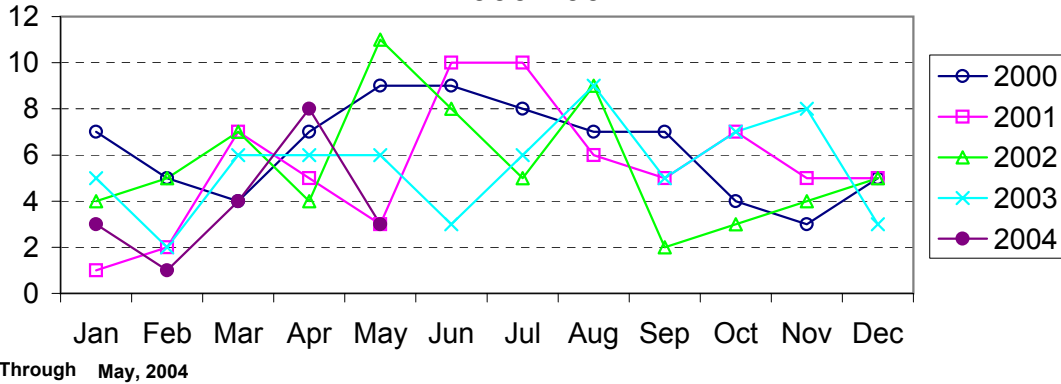
Index Offenses in Current and Previous 12 Months Charlotte-Mecklenburg Police Department: 2003-2004



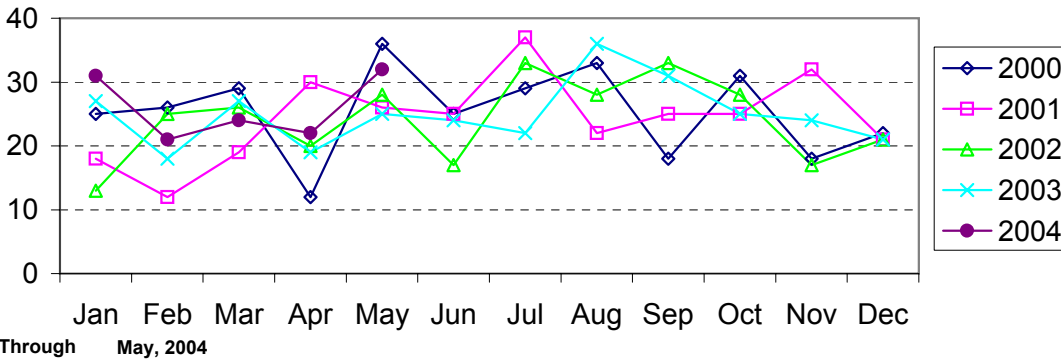
Year-to-Date Index Offenses by Type Charlotte-Mecklenburg Police Department: 2004



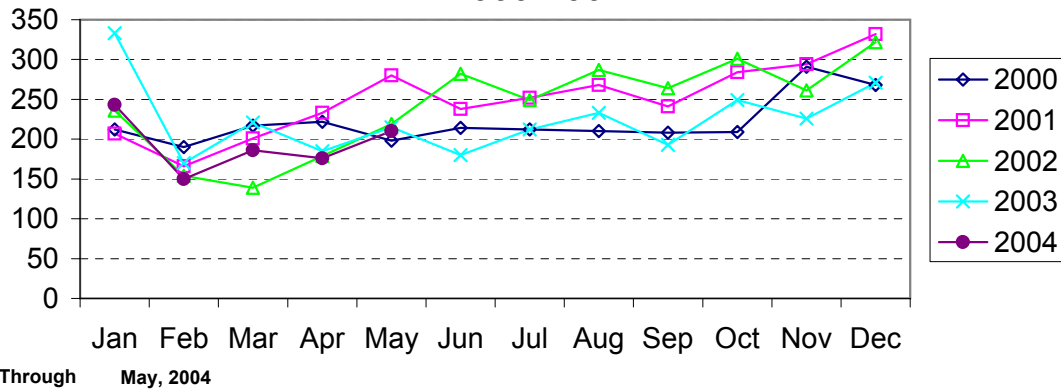
Homicide Reported by Month Charlotte-Mecklenburg Police Department: 2000-2004



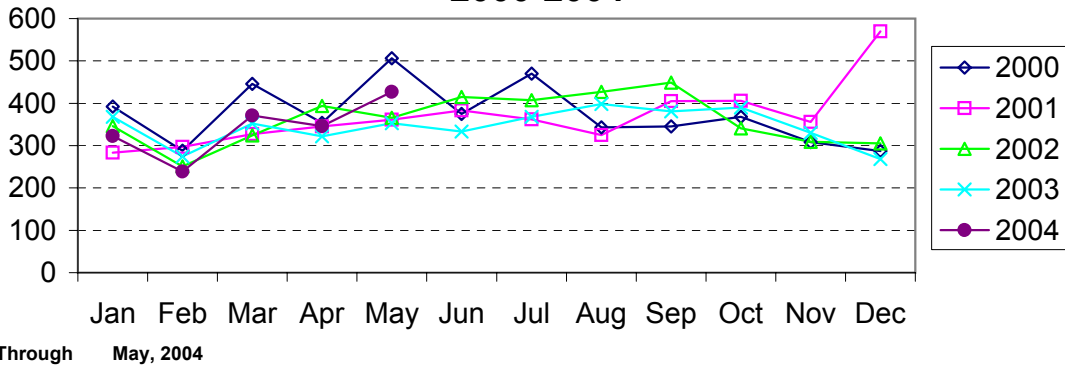
Rape Reported by Month Charlotte-Mecklenburg Police Department: 2000-2004



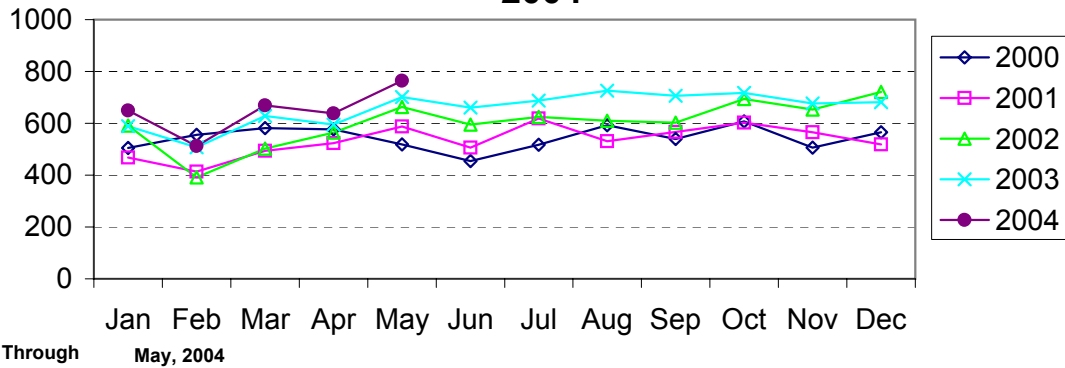
Robbery Reported by Month Charlotte-Mecklenburg Police Department: 2000-2004



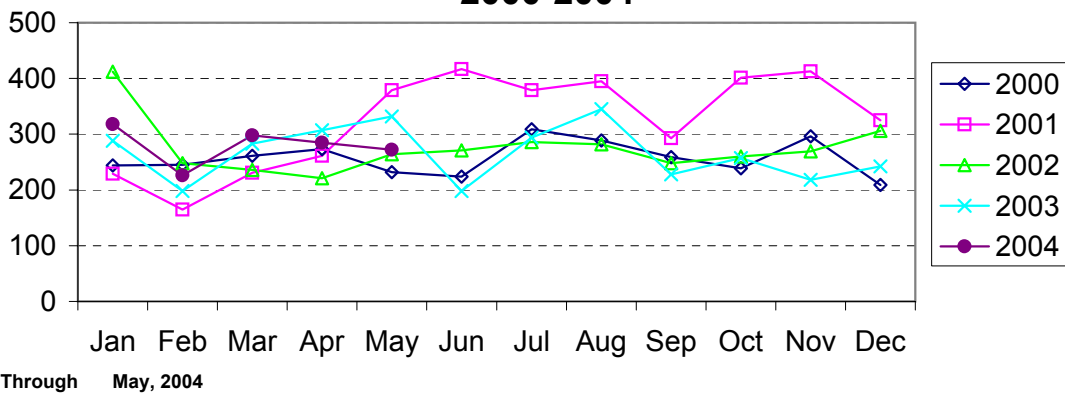
**Aggravated Assault Reported by Month
Charlotte-Mecklenburg Police Department:
2000-2004**



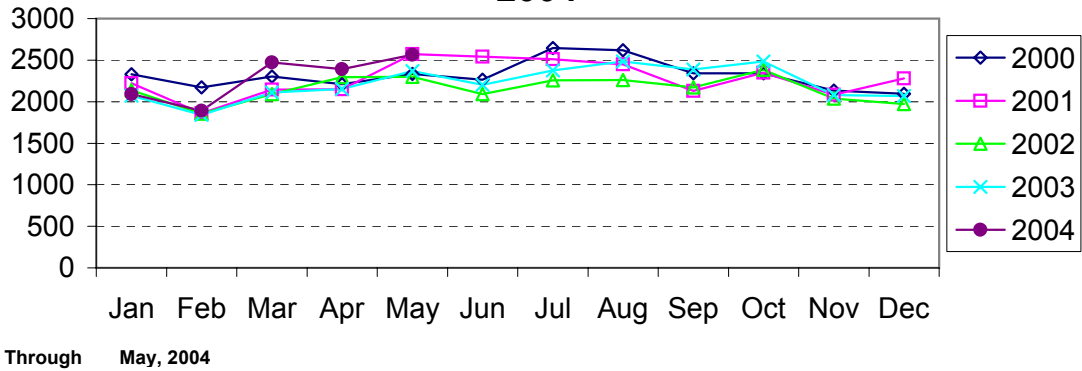
**Residential Burglary Reported by Month
Charlotte-Mecklenburg Police Department: 2000-
2004**



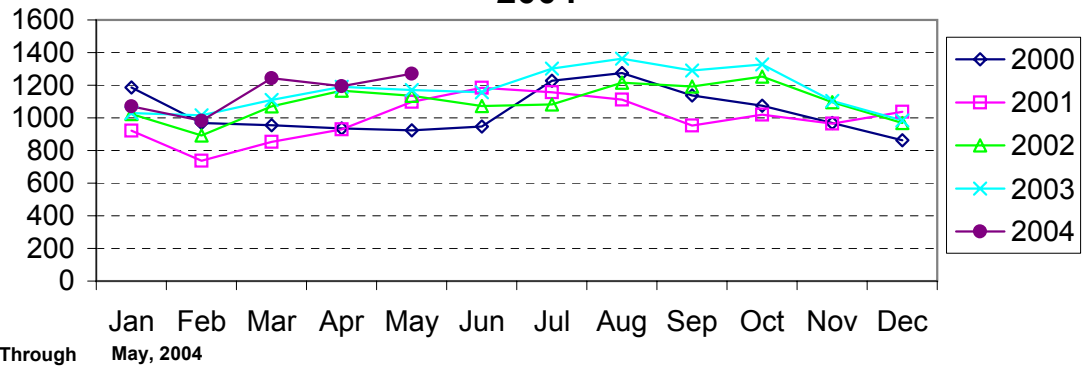
**Commercial Burglary Reported by Month
Charlotte-Mecklenburg Police Department:
2000-2004**



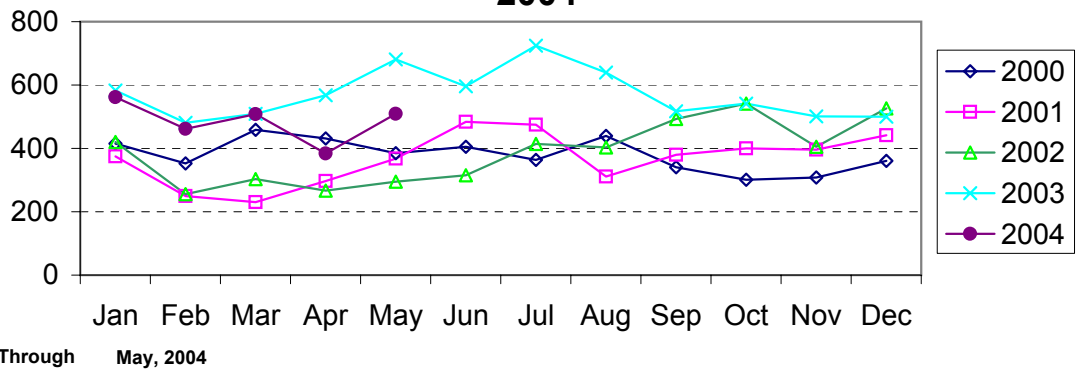
Larceny Reported by Month Charlotte-Mecklenburg Police Department: 2000-2004



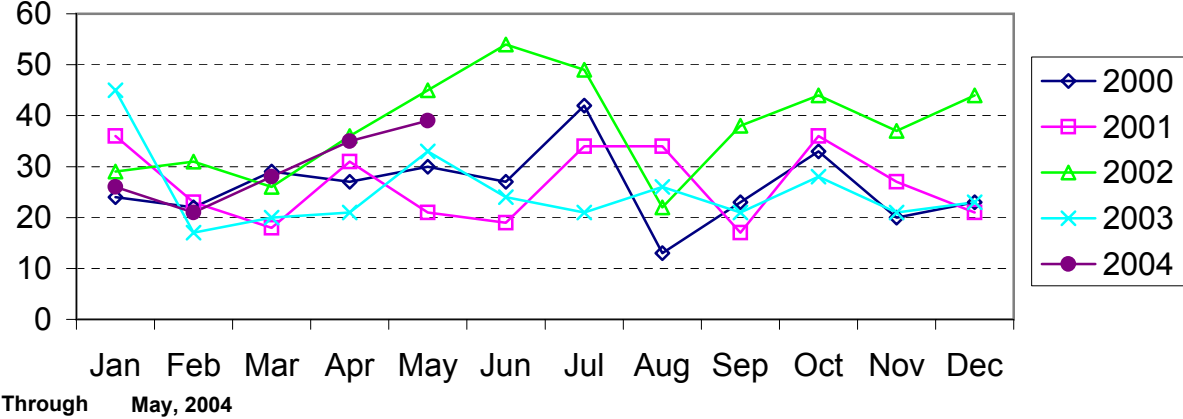
Larceny from Vehicle Reported by Month Charlotte-Mecklenburg Police Department: 2000-2004



Vehicle Theft Reported by Month Charlotte-Mecklenburg Police Department: 2000-2004



Arson Reported by Month Charlotte-Mecklenburg Police Department: 2000-2004



Index Offenses Reported by Division and Service Area of Occurrence									
West Service Area: Jan-May, 2003-2004									
INDEX_CATEGORIES	Westover (A2)			Freedom (A3)			West Service Area		
	2003	2004	% Change	2003	2004	% Change	2003	2004	% Change
MURDER & NON-NEGLIGENT MANSLAUGHTER	2	0	-100.0%	2	0	-100.0%	4	0	-100.0%
RAPE	8	9	12.5%	21	10	-52.4%	29	19	-34.5%
ACTUAL	8	9	12.5%	19	10	-47.4%	27	19	-29.6%
ATTEMPTED	0	0	NA	2	0	-100.0%	2	0	-100.0%
ROBBERY	98	72	-26.5%	103	122	18.4%	201	194	-3.5%
ARMED	73	56	-23.3%	76	93	22.4%	149	149	0.0%
STRONG-ARM	25	16	-36.0%	27	29	7.4%	52	45	-13.5%
AGGRAVATED ASSAULT	166	130	-21.7%	209	188	-10.0%	375	318	-15.2%
BURGLARY	349	368	5.4%	550	641	16.5%	899	1009	12.2%
RESIDENTIAL	227	243	7.0%	341	445	30.5%	568	688	21.1%
COMMERCIAL	122	125	2.5%	209	196	-6.2%	331	321	-3.0%
LARCENY	601	732	21.8%	864	1164	34.7%	1465	1896	29.4%
FROM AUTO	296	385	30.1%	404	557	37.9%	700	942	34.6%
BICYCLE	4	7	75.0%	3	5	66.7%	7	12	71.4%
SHOPLIFTING	66	70	6.1%	77	128	66.2%	143	198	38.5%
OTHERS	235	270	14.9%	380	474	24.7%	615	744	21.0%
VEHICLE THEFT	180	162	-10.0%	320	295	-7.8%	500	457	-8.6%
ARSON	8	12	50.0%	21	15	-28.6%	29	27	-6.9%
TOTALS	1412	1485	5.2%	2090	2435	16.5%	3502	3920	11.9%
VIOLENT PROPERTY	274 1138	211 1274	-23.0% 12.0%	335 1755	320 2115	-4.5% 20.5%	609 2893	531 3389	-12.8% 17.1%

Index Offenses Reported by Division and Service Area of Occurrence									
Southeast Service Area: Jan-May, 2003-2004									
INDEX_CATEGORIES	Providence (B1)			Independence (B3)			Southeast Service Area		
	2003	2004	% Change	2003	2004	% Change	2003	2004	% Change
MURDER & NON-NEGLIGENT MANSLAUGHTER	0	0	NA	2	1	-50.0%	2	1	-50.0%
RAPE	7	7	0.0%	10	8	-20.0%	17	15	-11.8%
ACTUAL	7	7	0.0%	10	7	-30.0%	17	14	-17.6%
ATTEMPTED	0	0	NA	0	1	NA	0	1	NA
ROBBERY	50	52	4.0%	100	86	-14.0%	150	138	-8.0%
ARMED	41	39	-4.9%	85	67	-21.2%	126	106	-15.9%
STRONG-ARM	9	13	44.4%	16	19	18.8%	25	32	28.0%
AGGRAVATED ASSAULT	74	80	8.1%	123	140	13.8%	197	220	11.7%
BURGLARY	353	377	6.8%	423	414	-2.1%	776	791	1.9%
RESIDENTIAL	201	218	8.5%	327	316	-3.4%	528	534	1.1%
COMMERCIAL	152	159	4.6%	96	98	2.1%	248	257	3.6%
LARCENY	695	773	11.2%	1167	951	-18.5%	1862	1724	-7.4%
FROM AUTO	345	358	3.8%	664	557	-16.1%	1009	915	-9.3%
BICYCLE	3	6	100.0%	19	6	-68.4%	22	12	-45.5%
SHOPLIFTING	79	74	-6.3%	110	69	-37.3%	189	143	-24.3%
OTHERS	268	335	25.0%	374	319	-14.7%	642	654	1.9%
VEHICLE THEFT	125	122	-2.4%	314	276	-12.1%	439	398	-9.3%
ARSON	5	7	40.0%	19	14	-26.3%	24	21	-12.5%
TOTALS	1309	1418	8.3%	2158	1890	-12.4%	3467	3308	-4.6%
VIOLENT PROPERTY	131 1178	139 1279	6.1% 8.6%	235 1923	235 1655	0.0% -13.9%	366 3101	374 2934	2.2% -5.4%

The data in the district breakdowns does not include a small number of offenses in which the location of the offense was unknown or was entered without a valid tract assignment. Districts are not equal in geographic size, demographics, zoning/development, and other factors that influence the rate of crimes committed in an area. Therefore, the comparison of raw offense totals across districts is not advisable.

Index Offenses Reported by Division and Service Area of Occurrence									
Northeast Service Area: Jan-May, 2003-2004									
INDEX_CATEGORIES	North (C1)			Hickory Grove (C3)			Northeast Service Area		
	2003	2004	% Change	2003	2004	% Change	2003	2004	% Change
MURDER & NON-NEGLIGENT MANSLAUGHTER	4	2	-50.0%	4	1	-75.0%	8	3	-62.5%
RAPE	15	18	20.0%	9	17	88.9%	24	35	45.8%
ACTUAL	14	17	21.4%	8	16	100.0%	22	33	50.0%
ATTEMPTED	1	1	0.0%	1	1	0.0%	2	2	0.0%
ROBBERY	70	89	27.1%	100	84	-16.0%	170	173	1.8%
ARMED	56	69	23.2%	82	68	-17.1%	138	137	-0.7%
STRONG-ARM	14	20	42.9%	18	16	-11.1%	32	36	12.5%
AGGRAVATED ASSAULT	144	140	-2.8%	152	209	37.5%	296	349	17.9%
BURGLARY	486	580	19.3%	456	465	2.0%	942	1045	10.9%
RESIDENTIAL	324	416	28.4%	350	360	2.9%	674	776	15.1%
COMMERCIAL	162	164	1.2%	106	105	-0.9%	268	269	0.4%
LARCENY	1461	1651	13.0%	939	896	-4.6%	2400	2547	6.1%
FROM AUTO	852	920	8.0%	480	438	-8.8%	1332	1358	2.0%
BICYCLE	6	9	50.0%	6	16	166.7%	12	25	108.3%
SHOPLIFTING	144	141	-2.1%	101	68	-32.7%	245	209	-14.7%
OTHERS	459	581	26.6%	352	374	6.3%	811	955	17.8%
VEHICLE THEFT	311	293	-5.8%	332	244	-26.5%	643	537	-16.5%
ARSON	16	14	-12.5%	16	22	37.5%	32	36	12.5%
TOTALS	2507	2787	11.2%	2008	1938	-3.5%	4515	4725	4.7%
VIOLENT	233	249	6.9%	265	311	17.4%	498	560	12.4%
PROPERTY	2274	2538	11.6%	1743	1627	-6.7%	4017	4165	3.7%

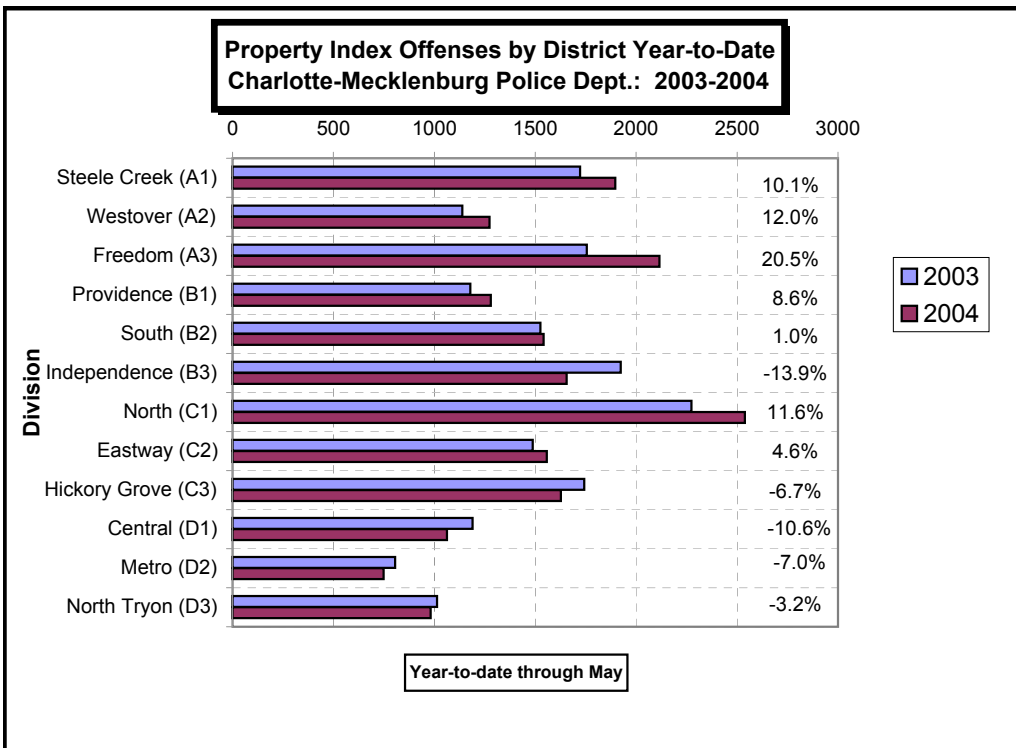
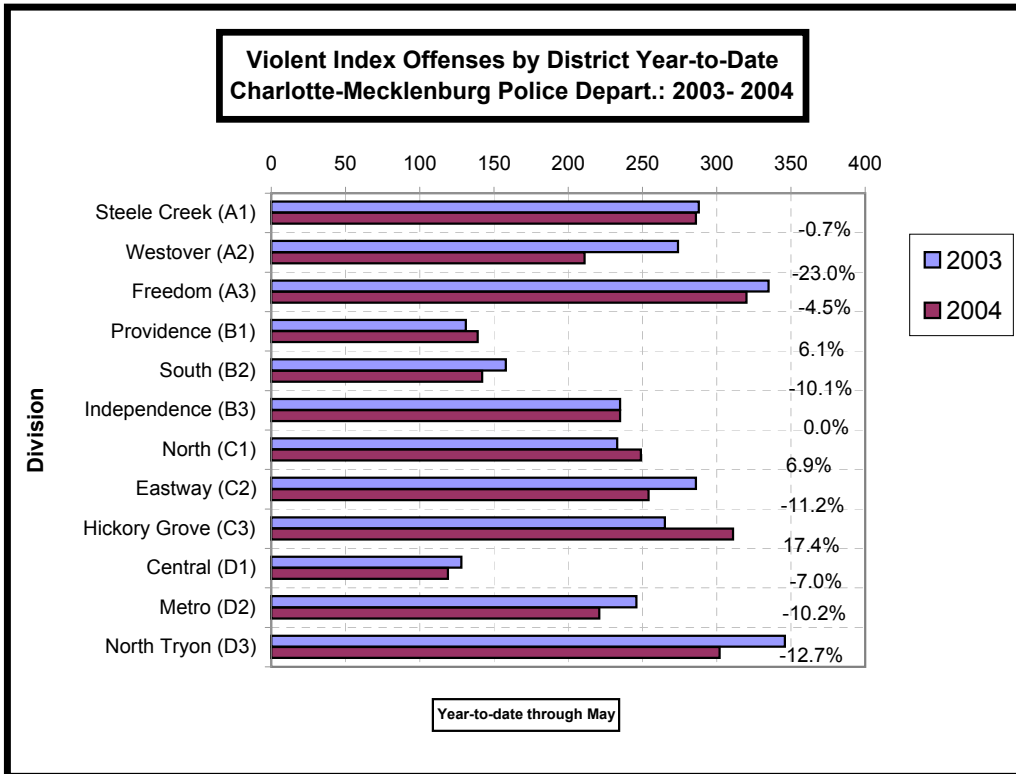
Index Offenses Reported by Division and Service Area of Occurrence									
Central Service Area: Jan-May, 2003-2004									
INDEX_CATEGORIES	Central (D1)			Metro (D2)			Central Service Area		
	2003	2004	% Change	2003	2004	% Change	2003	2004	% Change
MURDER & NON-NEGLIGENT MANSLAUGHTER	2	0	-100.0%	1	3	200.0%	3	3	0.0%
RAPE	5	9	80.0%	8	12	50.0%	13	21	61.5%
ACTUAL	5	8	60.0%	7	11	57.1%	12	19	58.3%
ATTEMPTED	0	1	NA	1	1	0.0%	1	2	100.0%
ROBBERY	45	45	0.0%	81	64	-21.0%	126	109	-13.5%
ARMED	23	24	4.3%	59	54	-8.5%	82	78	-4.9%
STRONG-ARM	22	21	-4.5%	22	10	-54.5%	44	31	-29.5%
AGGRAVATED ASSAULT	76	65	-14.5%	156	142	-9.0%	232	207	-10.8%
BURGLARY	162	147	-9.3%	241	229	-5.0%	403	376	-6.7%
RESIDENTIAL	81	56	-30.9%	181	169	-6.6%	262	225	-14.1%
COMMERCIAL	81	91	12.3%	60	60	0.0%	141	151	7.1%
LARCENY	806	798	-1.0%	392	387	-1.3%	1198	1185	-1.1%
FROM AUTO	449	419	-6.7%	205	163	-20.5%	654	582	-11.0%
BICYCLE	0	7	NA	4	2	-50.0%	4	9	125.0%
SHOPLIFTING	23	26	13.0%	12	32	166.7%	35	58	65.7%
OTHERS	334	346	3.6%	171	190	11.1%	505	536	6.1%
VEHICLE THEFT	215	116	-46.0%	164	127	-22.6%	379	243	-35.9%
ARSON	6	2	-66.7%	8	6	-25.0%	14	8	-42.9%
TOTALS	1317	1182	-10.3%	1051	970	-7.7%	2368	2152	-9.1%
VIOLENT	128	119	-7.0%	246	221	-10.2%	374	340	-9.1%
PROPERTY	1189	1063	-10.6%	805	749	-7.0%	1994	1812	-9.1%

The data in the district breakdowns does not include a small number of offenses in which the location of the offense was unknown or was entered without a valid tract assignment. Districts are not equal in geographic size, demographics, zoning/development, and other factors that influence the rate of crimes committed in an area. Therefore, the comparison of raw offense totals across districts is not advisable.

Index Offenses Reported by Division and Service Area of Occurrence									
East Service Area: Jan-May, 2003-2004									
INDEX_CATEGORIES	Eastway (C2)			North Tryon (D3)			East Service Area		
	2003	2004	% Change	2003	2004	% Change	2003	2004	% Change
MURDER & NON-NEGLIGENT MANSLAUGHTER	1	4	300.0%	4	4	0.0%	5	8	60.0%
RAPE	3	7	133.3%	9	9	0.0%	12	16	33.3%
ACTUAL	3	7	133.3%	9	8	-11.1%	12	15	25.0%
ATTEMPTED	0	0	NA	0	1	NA	0	1	NA
ROBBERY	150	107	-28.7%	136	103	-24.3%	286	210	-26.6%
ARMED	121	76	-37.2%	113	78	-31.0%	234	154	-34.2%
STRONG-ARM	29	31	6.9%	23	25	8.7%	52	56	7.7%
AGGRAVATED ASSAULT	132	136	3.0%	197	186	-5.6%	329	322	-2.1%
BURGLARY	373	367	-1.6%	289	271	-6.2%	662	638	-3.6%
RESIDENTIAL	265	246	-7.2%	199	187	-6.0%	464	433	-6.7%
COMMERCIAL	108	121	12.0%	90	84	-6.7%	198	205	3.5%
LARCENY	907	990	9.2%	483	539	11.6%	1390	1529	10.0%
FROM AUTO	428	350	-18.2%	259	260	0.4%	687	610	-11.2%
BICYCLE	8	13	62.5%	3	4	33.3%	11	17	54.5%
SHOPLIFTING	198	326	64.6%	30	41	36.7%	228	367	61.0%
OTHERS	273	301	10.3%	191	234	22.5%	464	535	15.3%
VEHICLE THEFT	202	184	-8.9%	237	167	-29.5%	439	351	-20.0%
ARSON	6	16	166.7%	5	5	0.0%	11	21	90.9%
TOTALS	1774	1811	2.1%	1360	1284	-5.6%	3134	3095	-1.2%
VIOLENT PROPERTY	286 1488	254 1557	-11.2% 4.6%	346 1014	302 982	-12.7% -3.2%	632 2502	556 2539	-12.0% 1.5%

Index Offenses Reported by Division and Service Area of Occurrence									
South Service Area: Jan-May, 2003-2004									
INDEX_CATEGORIES	Steele Creek (A1)			South (B2)			South Service Area		
	2003	2004	% Change	2003	2004	% Change	2003	2004	% Change
MURDER & NON-NEGLIGENT MANSLAUGHTER	3	4	33.3%	0	0	NA	3	4	33.3%
RAPE	11	12	9.1%	10	9	-10.0%	21	21	0.0%
ACTUAL	10	11	10.0%	9	9	0.0%	19	20	5.3%
ATTEMPTED	1	1	0.0%	1	0	-100.0%	2	1	-50.0%
ROBBERY	131	85	-35.1%	57	50	-12.3%	188	135	-28.2%
ARMED	91	64	-29.7%	42	37	-11.9%	133	101	-24.1%
STRONG-ARM	30	21	-30.0%	15	13	-13.3%	45	34	-24.4%
AGGRAVATED ASSAULT	143	185	29.4%	91	83	-8.8%	234	268	14.5%
BURGLARY	348	376	8.0%	358	323	-9.8%	706	699	-1.0%
RESIDENTIAL	222	278	25.2%	277	262	-5.4%	499	540	8.2%
COMMERCIAL	126	98	-22.2%	81	61	-24.7%	207	159	-23.2%
LARCENY	1118	1265	13.1%	1009	1051	4.2%	2127	2316	8.9%
FROM AUTO	525	673	28.2%	560	570	1.8%	1085	1243	14.6%
BICYCLE	8	6	-25.0%	3	3	0.0%	11	9	-18.2%
SHOPLIFTING	170	196	15.3%	77	59	-23.4%	247	255	3.2%
OTHERS	415	390	-6.0%	369	419	13.6%	784	809	3.2%
VEHICLE THEFT	246	240	-2.4%	147	148	0.7%	393	388	-1.3%
ARSON	10	15	50.0%	12	20	66.7%	22	35	59.1%
TOTALS	2010	2182	8.6%	1684	1684	0.0%	3694	3866	4.7%
VIOLENT PROPERTY	288 1722	286 1896	-0.7% 10.1%	158 1526	142 1542	-10.1% 1.0%	446 3248	428 3438	-4.0% 5.8%

The data in the district breakdowns does not include a small number of offenses in which the location of the offense was unknown or was entered without a valid tract assignment. Districts are not equal in geographic size, demographics, zoning/development, and other factors that influence the rate of crimes committed in an area. Therefore, the comparison of raw offense totals across districts is not advisable.



The data in the district breakdowns does not include a small number of offenses in which the location of the offense was unknown or was entered without a valid tract assignment. Districts are not equal in geographic size, demographics, zoning/development, and other factors that influence the rate of crimes committed in an area. Therefore, the comparison of raw offense totals across districts is not advisable.

Arrests by Charlotte-Mecklenburg Police Department
Year-To-Date: 2003-2004
(Through May)

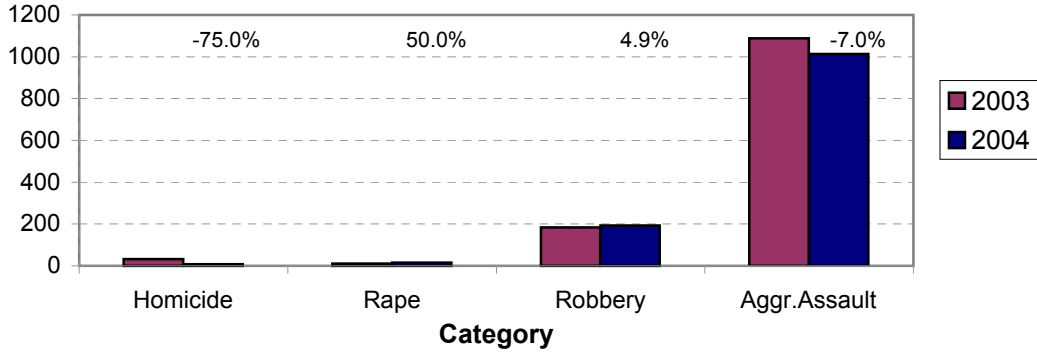
CATEGORY	ADULTS (AGE 18 & OLDER):			JUVENILES (UNDER 18):			TOTAL ARRESTS:		
	2003 Y-T-D	2004 Y-T-D	% CHANGE	2003 Y-T-D	2004 Y-T-D	% CHANGE	2003 Y-T-D	2004 Y-T-D	% CHANGE
Murder/Non-Negligent Manslaughter	29	8	-72.4%	3	0	-100.0%	32	8	-75.0%
Negligent & Vehicular Manslaughter	0	3	NA	0	0	NA	0	3	NA
Rape	10	13	30.0%	0	2	NA	10	15	50.0%
Robbery	136	124	-8.8%	48	69	43.8%	184	193	4.9%
Aggravated Assault	932	853	-8.5%	157	160	1.9%	1089	1013	-7.0%
Burglary	200	219	9.5%	117	94	-19.7%	317	313	-1.3%
Larceny	587	654	11.4%	303	271	-10.6%	890	925	3.9%
Vehicle Theft	57	34	-40.4%	178	78	-56.2%	235	112	-52.3%
Non-Aggravated Assault	704	775	10.1%	414	411	-0.7%	1118	1186	6.1%
Arson	13	7	-46.2%	13	17	30.8%	26	24	-7.7%
Forgery/Counterfiet	47	56	19.1%	2	2	0.0%	49	58	18.4%
Fraud	219	225	2.7%	6	3	-50.0%	225	228	1.3%
Embezzlement	48	37	-22.9%	3	5	66.7%	51	42	-17.6%
Stolen Property	229	199	-13.1%	81	42	-48.1%	310	241	-22.3%
Vandalism	108	94	-13.0%	79	100	26.6%	187	194	3.7%
Weapons	208	190	-8.7%	28	30	7.1%	236	220	-6.8%
Prostitution	85	125	47.1%	0	7	NA	85	132	55.3%
Sex Offenses	77	83	7.8%	22	5	-77.3%	99	88	-11.1%
Drugs	1415	1161	-18.0%	138	111	-19.6%	1553	1272	-18.1%
Gambling	14	11	-21.4%	0	0	NA	14	11	-21.4%
Offenses vs. Family	6	1	-83.3%	0	1	NA	6	2	-66.7%
DUI	838	797	-4.9%	1	5	400.0%	839	802	-4.4%
Liquor	66	92	39.4%	5	2	-60.0%	71	94	32.4%
Disorder Conduct	200	215	7.5%	136	167	22.8%	336	382	13.7%
Other Non-Traffic	2981	3355	12.5%	346	382	10.4%	3327	3737	12.3%
VIOLENT INDEX¹	1107	998	-9.8%	208	231	11.1%	1315	1229	-6.5%
PROPERTY INDEX²	857	914	6.7%	611	460	-24.7%	1468	1374	-6.4%
INDEX SUBTOTAL	1964	1912	-2.6%	819	691	-15.6%	2783	2603	-6.5%
PART 2 SUBTOTAL³	7245	7419	2.4%	1261	1273	1.0%	8506	8692	2.2%
TOTAL	9209	9331	1.3%	2080	1964	-5.6%	11289	11295	0.1%

¹Violent Index includes murder and non-negligent manslaughter, rape, robbery, and aggravated assault.

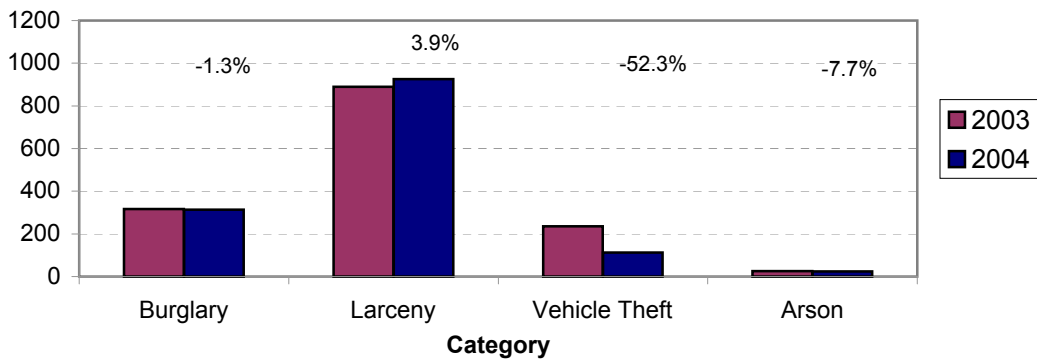
²Property Index includes burglary, larceny, vehicle theft, and arson.

³Part 2 crimes include non-traffic crimes not counted in the Index totals.

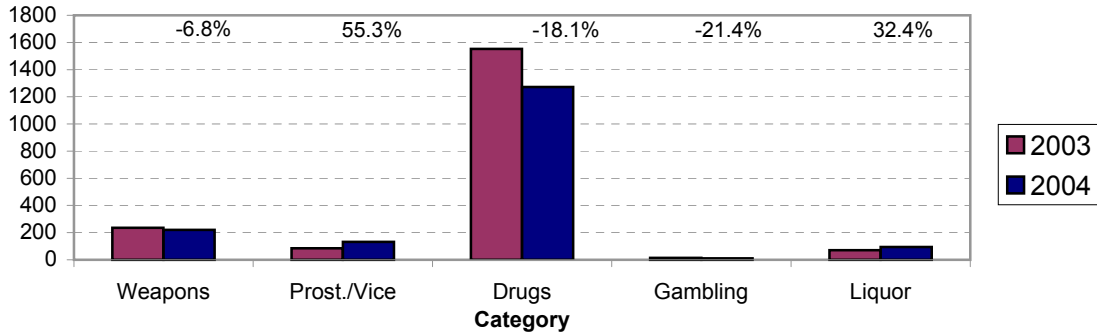
**Violent Index Arrests Year-to-Date
Charlotte-Mecklenburg Police Department: 2003-2004
(Through May)**



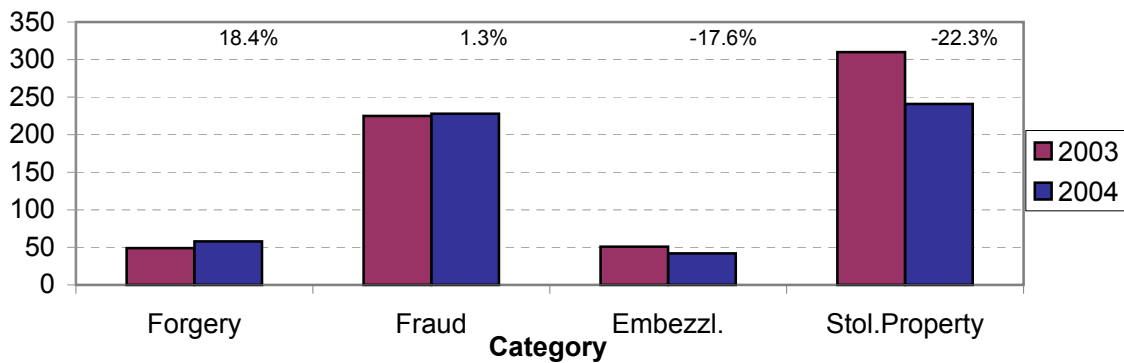
**Property Index Arrests Year-to-Date
Charlotte-Mecklenburg Police Department: 2003-2004
(Through May)**



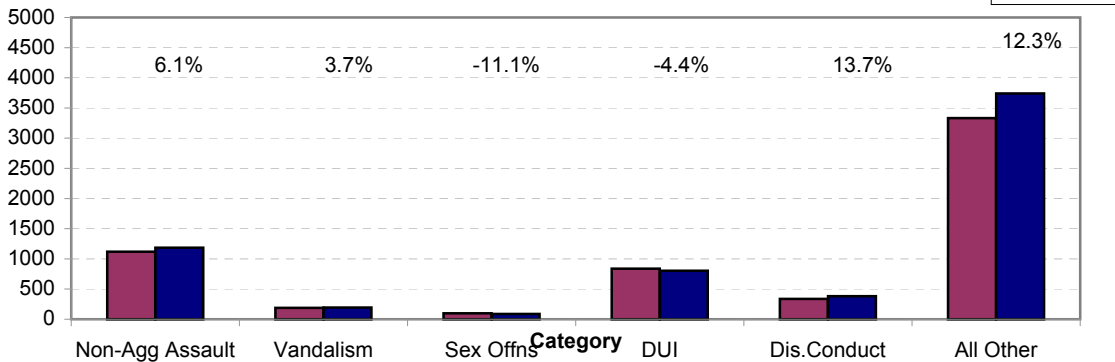
**Arrests for Vice/CCW/Drugs/Etc. Year-to-Date
Charlotte-Mecklenburg Police Department: 2003 - 2004
(Through May)**



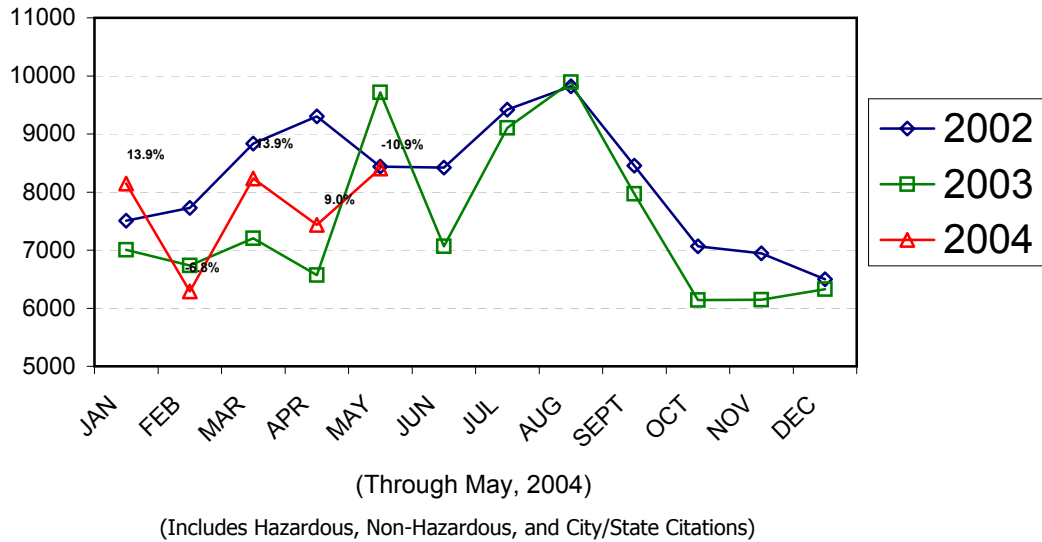
**Arrests for Property/White Collar Crime Year-to-Date
Charlotte-Mecklenburg Police Department: 2003 - 2004
(Through May)**



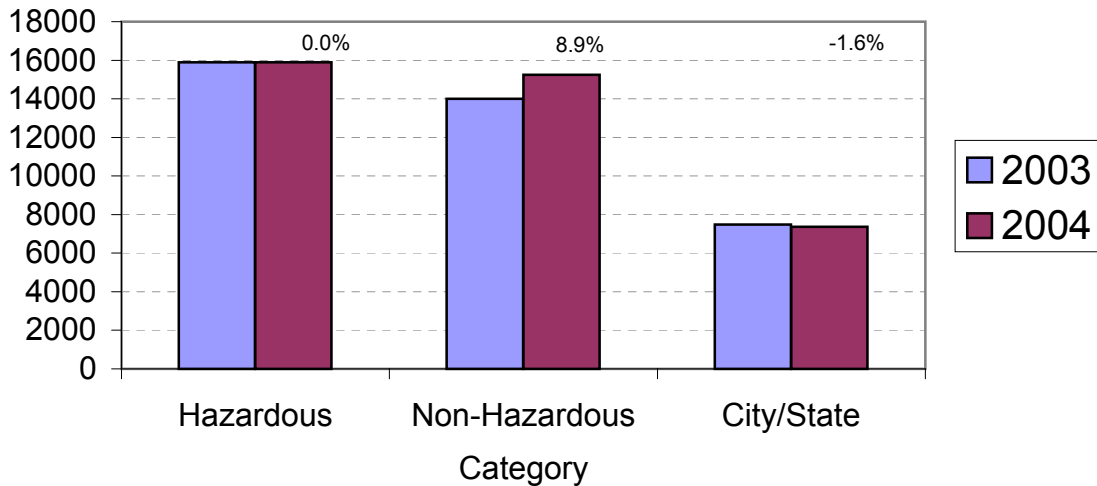
**Arrests for Other Categories Year-to-Date
Charlotte-Mecklenburg Police Department: 2003 - 2004
(Through May)**



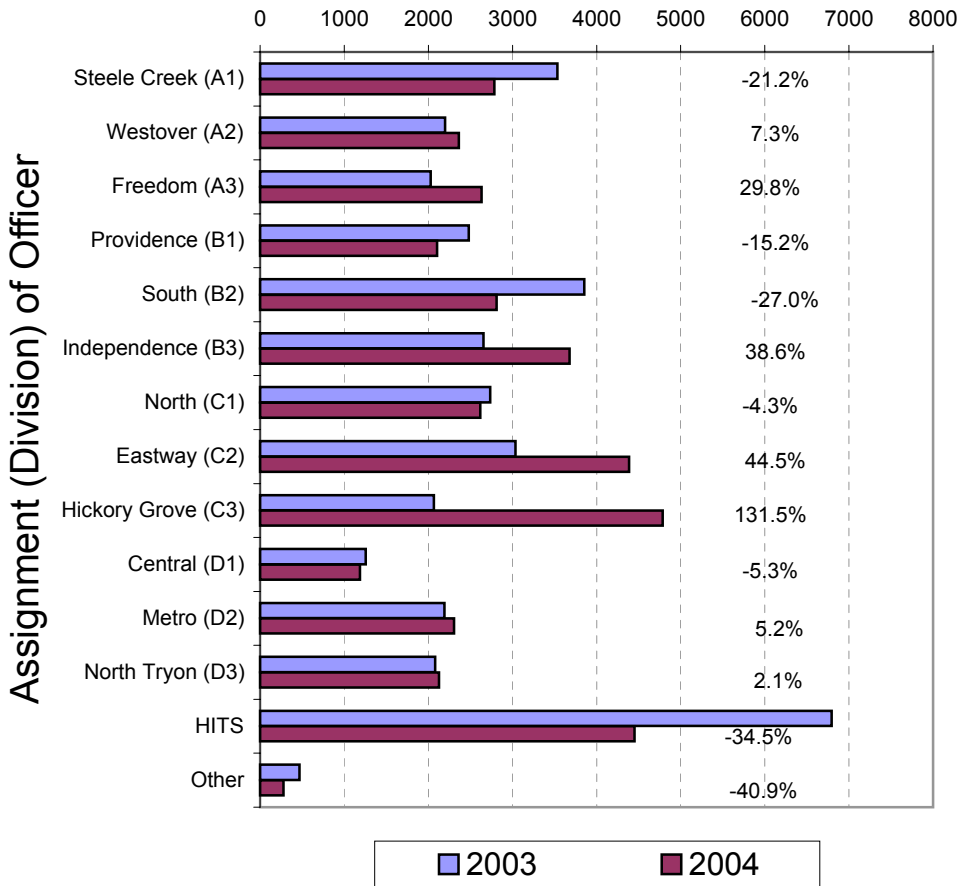
Total Citation Enforcement by Month Charlotte-Mecklenburg Police Dept.: 2002-2004



CMPD Citation Enforcement by Category Year-to-Date, 2003 - 2004 (Through May, 2004)



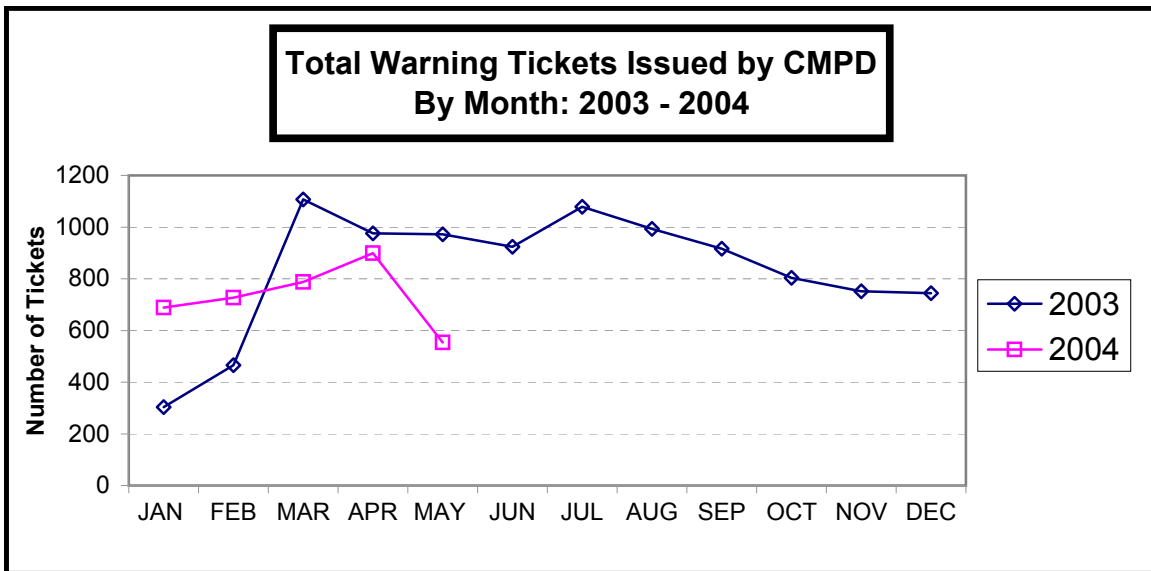
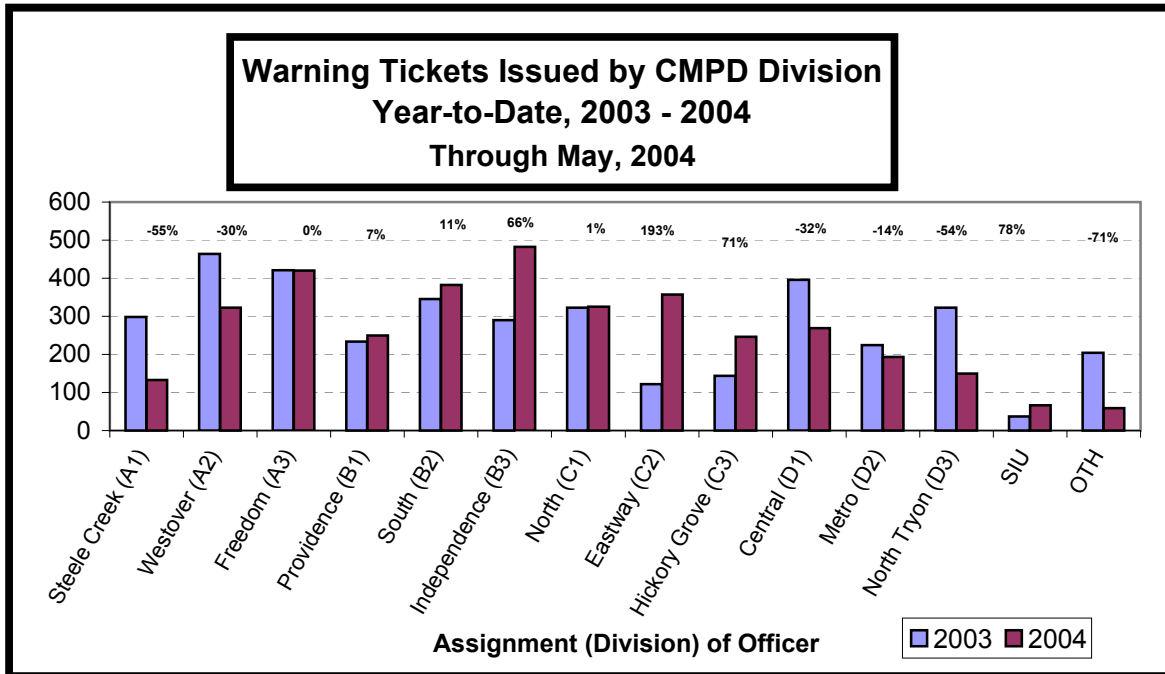
**Citations Issued Year-to-Date by CMPD Divisions
2003 - 2004
(Through May, 2004)**



Note: 2003 and 2004 data for HITS and Other was adjusted in April, 2004.

**Citations Issued by the Charlotte Mecklenburg Police Dept. Year-to-Date
(Through May, 2004)**

Total Citations	2003	2004	% Change
Hazardous	15,893	15,893	0.0%
Non-Hazardous	13,995	15,246	8.9%
Other City/State Statute/Ordinance	7,482	7,362	-1.6%
Total	37,370	38,501	3.0%



Warning Tickets Issued by CMPD Year-to-Date Through May, 2004

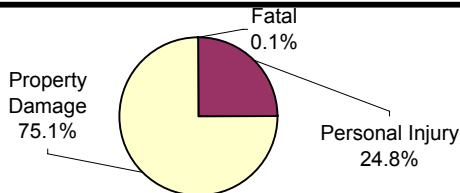
	2003	2004	% Change
Total Warning Tickets	3825	3655	-4.4%

**Traffic Collision Reports
Charlotte-Mecklenburg Police Department
Year-to-Date: 2003-2004
(Through May)**

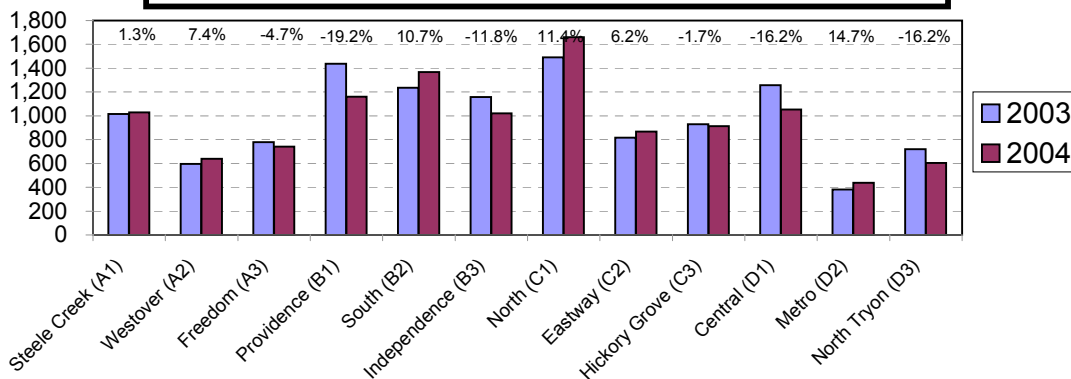
<u>Type</u>	<u>2003</u>	<u>2004</u>	<u>% Change</u>
Fatal Collisions	25	15	-40.0%
Vehicle Occupants Killed	27	13	-51.9%
Pedestrians Killed	2	3	50.0%
Personal Injury Collisions	2831	2848	0.2%
Property Damage Collisions	9063	8672	-4.3%
Total Collisions	11919	11535	-3.2%

* The number of fatal collisions and the number of persons killed in those incidents is taken from the HITS file. Their records are updated for deaths that occur after the initial report is filed.

**Traffic Collisions Reported by Type
Charlotte-Mecklenburg Police Department:
2004 Year-to-Date
(Through May)**



**Traffic Collisions Reported by Charlotte-Mecklenburg Police Dept.
Year-to-Date By Location (Division) : 2003 -2004
(Through May)**



Uniform Crime Reporting Procedures:

The Charlotte-Mecklenburg Police Department reports offense and arrest statistics in accordance with standard Uniform Crime Reporting (UCR) guidelines. UCR policy states that any adjustments to previous months can be made on the current month's report:

...In tabulating crime counts, an agency may find that offense totals for past months require adjustments due to developments in the investigation or other handling of the matter. It may be necessary to adjust totals reported to UCR for the past month or prior months. Needed adjustments can be made on the current month's report and do not affect the reliability of the figures in that such adjustments tend to equalize each other from month to month over a period of time.

- *Uniform Crime Reporting Handbook*, FBI, 1984, p. 42-43

We are required to report crime monthly to the UCR program, and we do therefore make an effort to process monthly changes in a timely manner. However, occasionally due to the review and processing required for reclassifying, unfounding or clearing cases, the current month's totals may reflect the processing of a backlog of these changes from previous months.

Users of the data are cautioned that conclusions about substantial changes in crime trends or in clearance rates based on only a single month's data or trend may reflect some of these adjustments. For this reason, in addition to the monthly and year-to-date trends on Page 1, the monthly report routinely includes a comparison for the previous 12 months (p. 4), as well as graphs that provide seasonal/monthly comparisons over a five-year period (p. 5-8).

We do make an effort to present the most accurate information available at the time this report is published. However, errors in compiling the data and charts do sometimes occur, so please notify the Research, Planning, and Analysis office if you have any questions about the data in this report.

The new division names are used in this report. For ease of use, they also include the old district designations in parentheses.

V. L. Sorban
Research, Planning & Analysis Bureau