

---

**CHARLOTTE-MECKLENBURG POLICE DEPARTMENT  
MONTHLY SUMMARY REPORT  
APRIL, 2004**

---

---

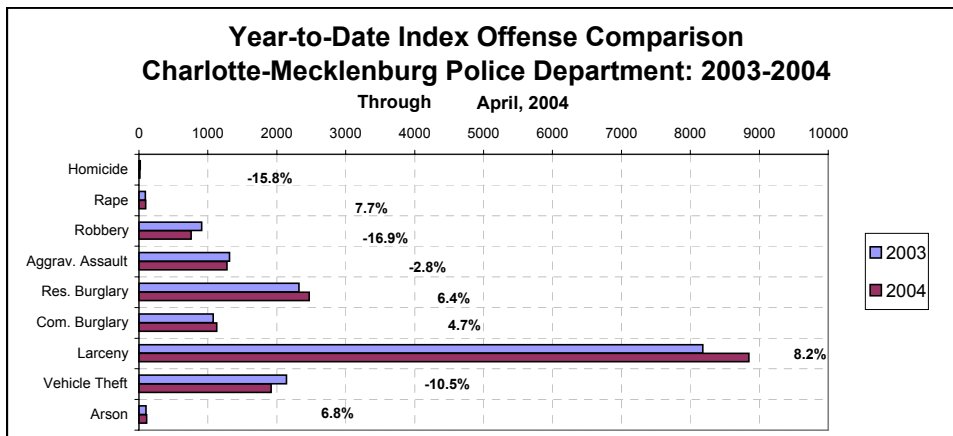
**Darrel Stephens  
Chief of Police**

---

**INDEX OFFENSES REPORTED TO CHARLOTTE-MECKLENBURG POLICE DEPARTMENT**

April, 2004 INDEX OFFENSES	# THIS MONTH	% OF ALL INDEX	# LAST MONTH	MONTHLY % CHANGE	SAME MONTH LAST YEAR	MONTHLY % CHANGE	THIS YEAR TO DATE	LAST YEAR TO DATE	ANNUAL % CHANGE
HOMICIDE (MURDER & NON- NEGLIGENT MANSLAUGHTER)	8	0.2%	4	100.0%	6	33.3%	16	19	-15.8%
RAPE TOTAL	22	0.5%	24	-8.3%	19	15.8%	98	91	7.7%
ACTUAL	22	0.5%	24	-8.3%	16	37.5%	94	84	11.9%
ATTEMPT	0	0.0%	0	NA	3	-100.0%	4	7	-42.9%
ROBBERY TOTAL	176	4.1%	186	-5.4%	185	-4.9%	755	909	-16.9%
ARMED	145	3.4%	129	12.4%	143	1.4%	575	704	-18.3%
STRONG-ARM	31	0.7%	57	-45.6%	42	-26.2%	180	205	-12.2%
AGGRAVATED ASSAULT TOTAL	346	8.1%	371	-6.7%	322	7.5%	1279	1316	-2.8%
BURGLARY TOTAL	923	21.5%	967	-4.6%	902	2.3%	3595	3396	5.9%
RESIDENTIAL	638	14.9%	669	-4.6%	595	7.2%	2468	2320	6.4%
COMMERCIAL	285	6.6%	298	-4.4%	307	-7.2%	1127	1076	4.7%
*****									
FORCE	735	17.1%	782	-6.0%	697	5.5%	2856	2727	4.7%
NO FORCE	135	3.1%	131	3.1%	145	-6.9%	511	448	14.1%
ATTEMPT	53	1.2%	54	-1.9%	60	-11.7%	228	221	3.2%
LARCENY TOTAL	2393	55.8%	2472	-3.2%	2154	11.1%	8848	8178	8.2%
\$200 AND OVER	1164	27.2%	1163	0.1%	1084	7.4%	4261	4029	5.8%
\$50 TO \$200	467	10.9%	447	4.5%	389	20.1%	1637	1491	9.8%
UNDER \$50	762	17.8%	862	-11.6%	681	11.9%	2950	2658	11.0%
*****									
FROM AUTO	1194	27.9%	1244	-4.0%	1190	0.3%	4490	4345	3.3%
BICYCLE	22	0.5%	20	10.0%	22	0.0%	62	45	37.8%
SHOPLIFTING	257	6.0%	293	-12.3%	208	23.6%	976	855	14.2%
OTHERS	920	21.5%	915	0.5%	734	25.3%	3320	2933	13.2%
VEHICLE THEFT TOTAL	384	9.0%	508	-24.4%	568	-32.4%	1916	2141	-10.5%
ARSON TOTAL	35	0.8%	28	25.0%	21	66.7%	110	103	6.8%
TOTALS	4287	100.0%	4560	-6.0%	4177	2.6%	16617	16153	2.9%
VIOLENT PROPERTY	552 3735	12.9% 87.1%	585 3975	-5.6% -6.0%	532 3645	3.8% 2.5%	2148 14469	2335 13818	-8.0% 4.7%

NOTE: These totals include offenses reported to the Charlotte-Mecklenburg Police Department in accordance with the Uniform Crime Reporting Program. Totals for homicide do not include cases investigated by the police but classed by UCR guidelines as negligent manslaughter or as "justifiable homicide."



**INDEX CLEARANCES REPORTED BY THE CHARLOTTE-MECKLENBURG POLICE DEPARTMENT**

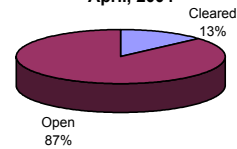
April, 2004 INDEX CLEARANCES	THIS MONTH:		LAST MONTH:		SAME MO. LAST YR:		THIS YEAR TO DATE:		LAST YEAR TO DATE:	
	NO.	%	NO.	%	NO.	%	NO.	%	NO.	%
MURDER & NON-NEGLIGENT MANSLAUGHTER	0	0.0%	4	100.0%	3	50.0%	5	31.3%	11	57.9%
RAPE TOTAL	7	31.8%	27	112.5%	10	52.6%	68	69.4%	48	52.7%
ACTUAL	7	31.8%	23	95.8%	9	56.3%	62	66.0%	45	53.6%
ATTEMPT	0	#DIV/0!	4	#DIV/0!	1	33.3%	6	150.0%	3	42.9%
ROBBERY TOTAL	35	19.9%	90	48.4%	51	27.6%	246	32.6%	171	18.8%
ARMED	28	19.3%	68	52.7%	39	27.3%	179	31.1%	118	16.8%
STRONG-ARM	7	22.6%	22	38.6%	12	28.6%	67	37.2%	53	25.9%
AGGRAVATED ASSAULT TOTAL	139	40.2%	242	65.2%	166	51.6%	699	54.7%	664	50.5%
BURGLARY TOTAL	126	13.7%	60	6.2%	104	11.5%	402	11.2%	339	10.0%
RESIDENTIAL	104	16.3%	48	7.2%	80	13.4%	734	29.7%	232	10.0%
COMMERCIAL	22	7.7%	12	4.0%	24	7.8%	68	6.0%	107	9.9%
LARCENY TOTAL	320	13.4%	237	9.6%	240	11.1%	1129	12.8%	993	12.1%
FROM AUTO	34	2.8%	26	2.1%	29	2.4%	123	2.7%	129	3.0%
BICYCLE	1	4.5%	0	0.0%	3	13.6%	4	6.5%	7	15.6%
SHOPLIFTING	170	66.1%	166	56.7%	117	56.3%	557	57.1%	472	55.2%
OTHERS	115	12.5%	45	4.9%	91	12.4%	445	13.4%	385	13.1%
VEHICLE THEFT TOTAL	102	26.6%	83	16.3%	80	14.1%	382	19.9%	357	16.7%
ARSON TOTAL	16	45.7%	6	21.4%	4	19.0%	36	32.7%	35	34.0%
TOTALS	745	17.4%	749	16.4%	658	15.8%	2967	17.9%	2618	16.2%
VIOLENT PROPERTY	181	32.8%	363	62.1%	230	43.2%	1018	47.4%	894	38.3%
	564	15.1%	386	9.7%	428	11.7%	1949	13.5%	1724	12.5%

NOTE: Clearances are reported in accordance with Uniform Crime Report guidelines. Since clearances are not counted until they are entered into the Records system, any delays in processing may result in some clearances being reported in succeeding months.

**Year-to-Date Violent Index Clearance Rate  
Charlotte-Mecklenburg Police Department: 2004  
April, 2004**

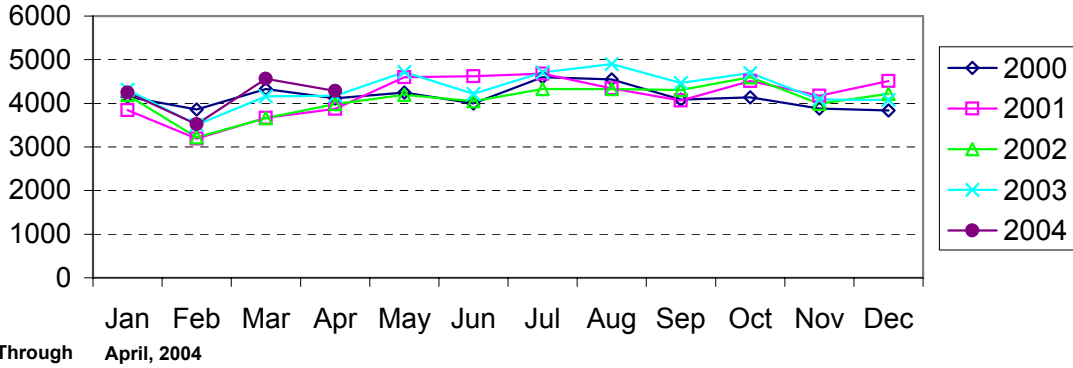


**Year-to-Date Property Index Clearance Rate  
Charlotte-Mecklenburg Police Department: 2004  
April, 2004**

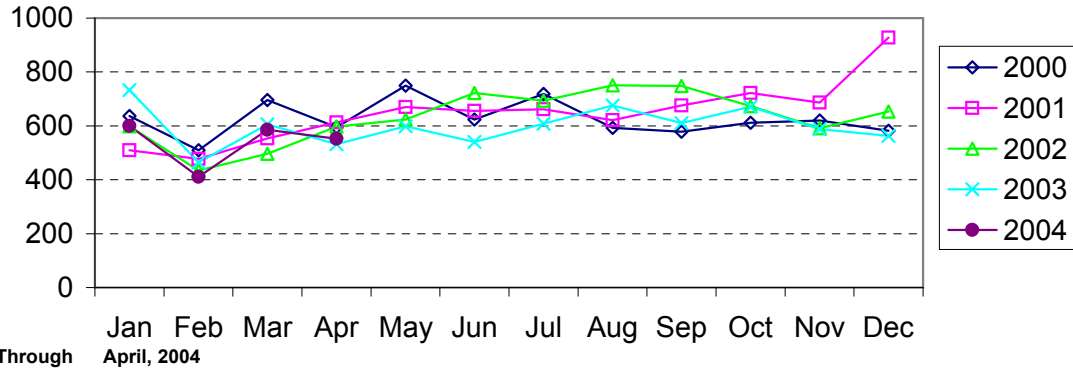


Clearance rates for crime reporting are calculated by dividing the number of crimes cleared during a designated time span by the number of crimes reported in the same period and converting the result to a percentage (multiplying by 100). Since cases from previous reporting periods can be cleared during the designated time span, the rate may be higher than 100%.

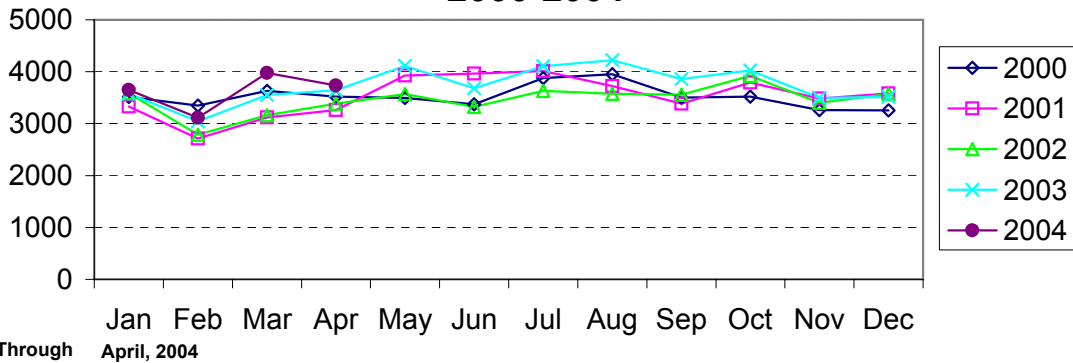
### Index Offenses Reported by Month Charlotte-Mecklenburg Police Department: 2000-2004



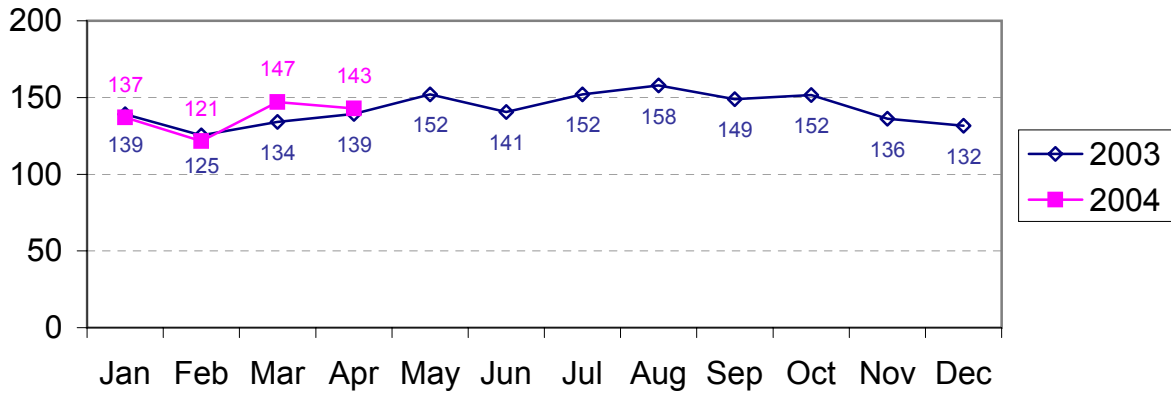
### Violent Index Offenses Reported by Month Charlotte-Mecklenburg Police Department: 2000-2004



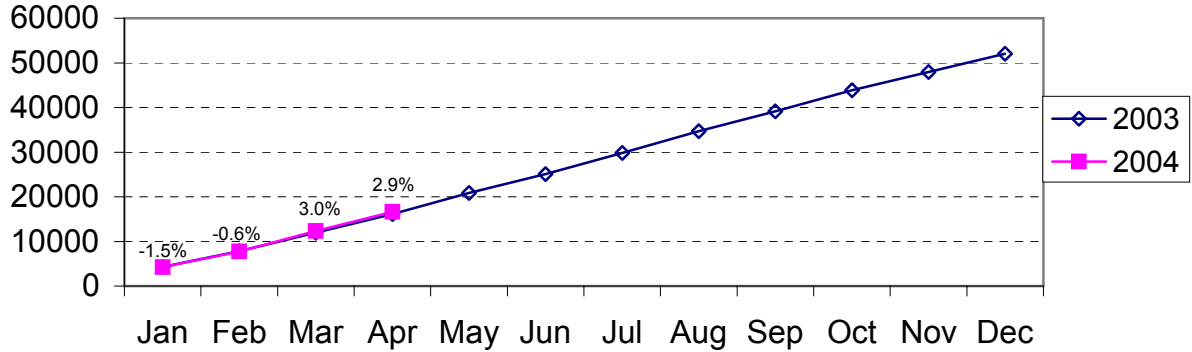
### Property Index Offenses Reported by Month Charlotte-Mecklenburg Police Department: 2000-2004



### Index Offense Per Day Average by Month Charlotte-Mecklenburg Police Department: 2003-2004

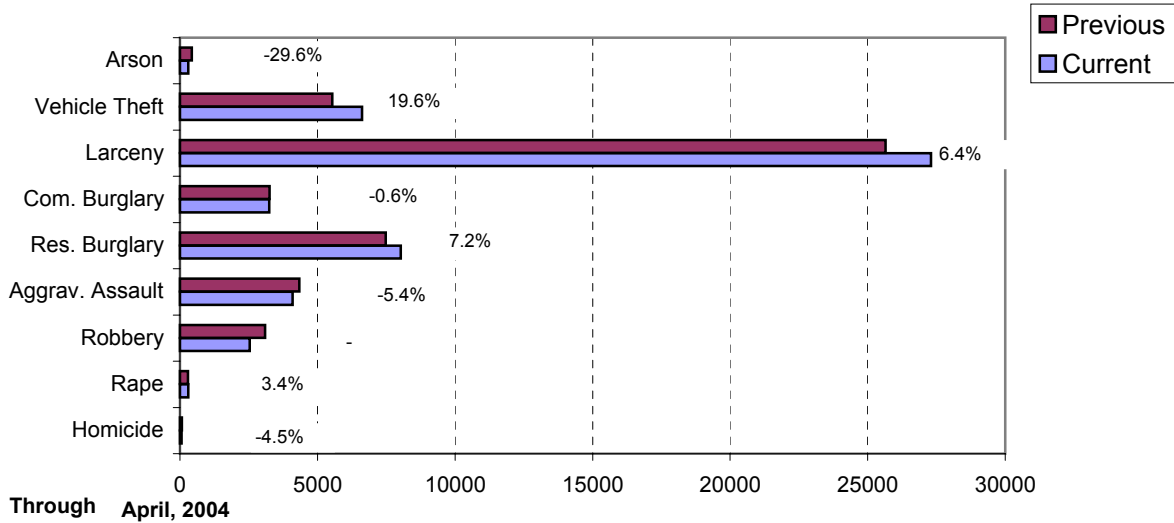


### Index Offenses Year-to-Date Cumulative Totals Charlotte-Mecklenburg Police Department: 2002-2003

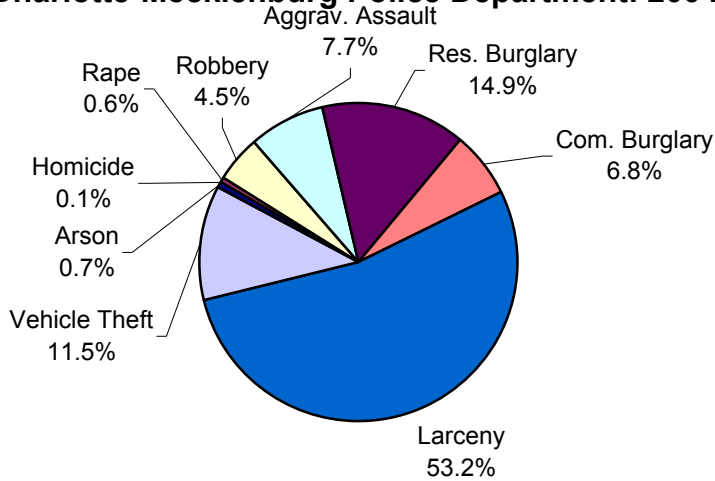


Through April, 2004

**Index Offenses in Current and Previous 12 Months  
Charlotte-Mecklenburg Police Department:  
2003-2004**

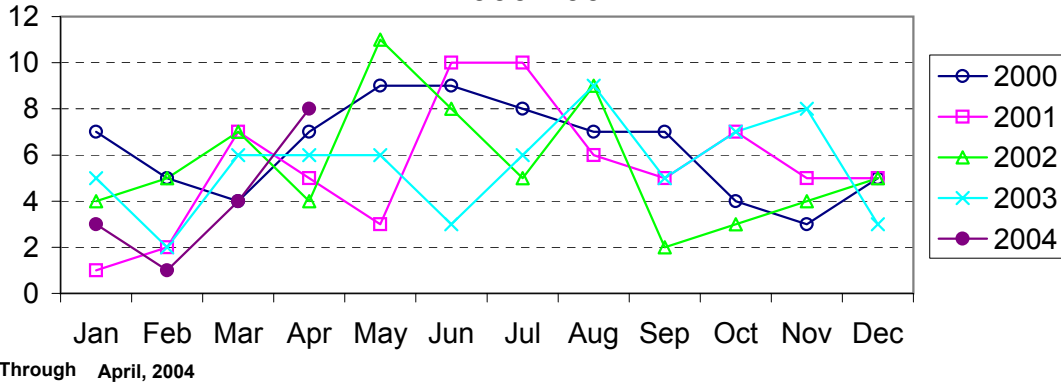


**Year-to-Date Index Offenses by Type  
Charlotte-Mecklenburg Police Department: 2004**

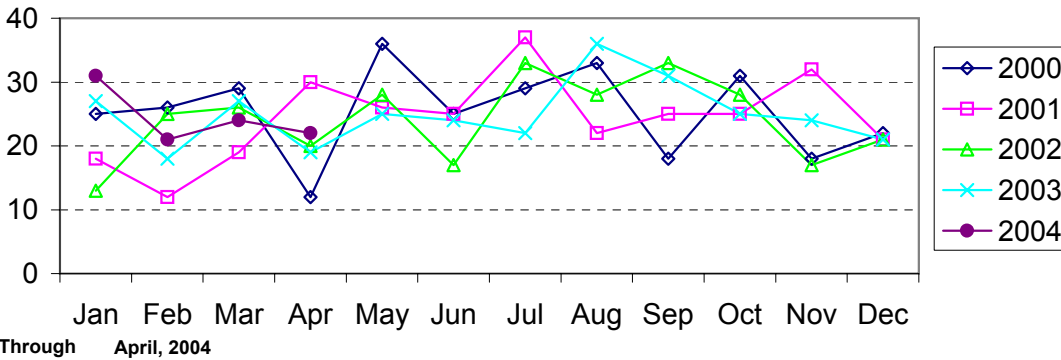


Through April, 2004

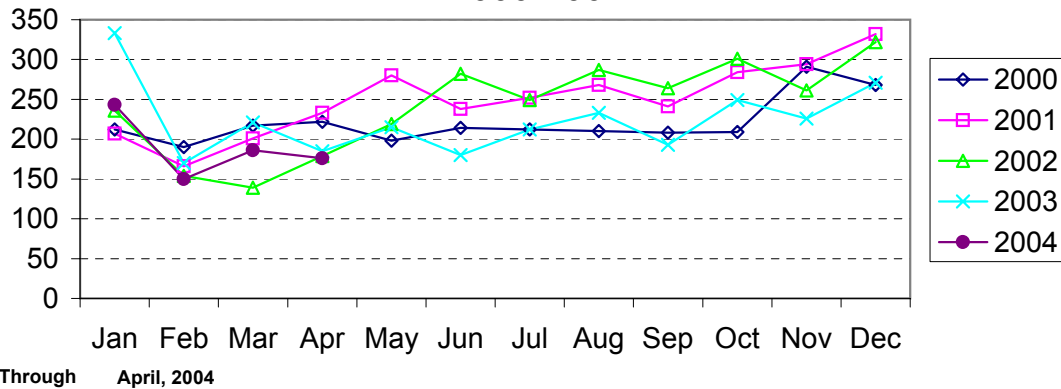
### Homicide Reported by Month Charlotte-Mecklenburg Police Department: 2000-2004



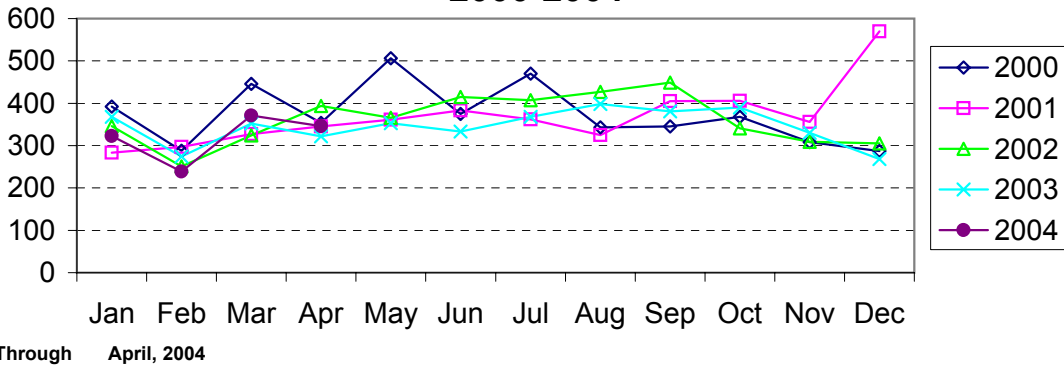
### Rape Reported by Month Charlotte-Mecklenburg Police Department: 2000-2004



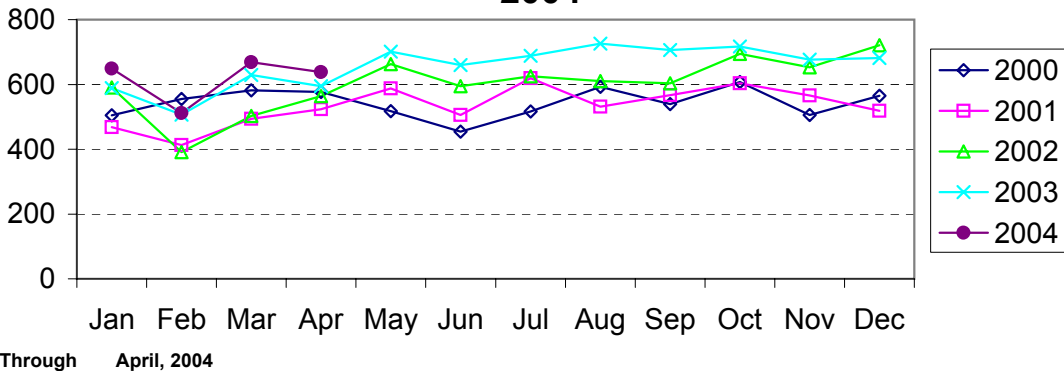
### Robbery Reported by Month Charlotte-Mecklenburg Police Department: 2000-2004



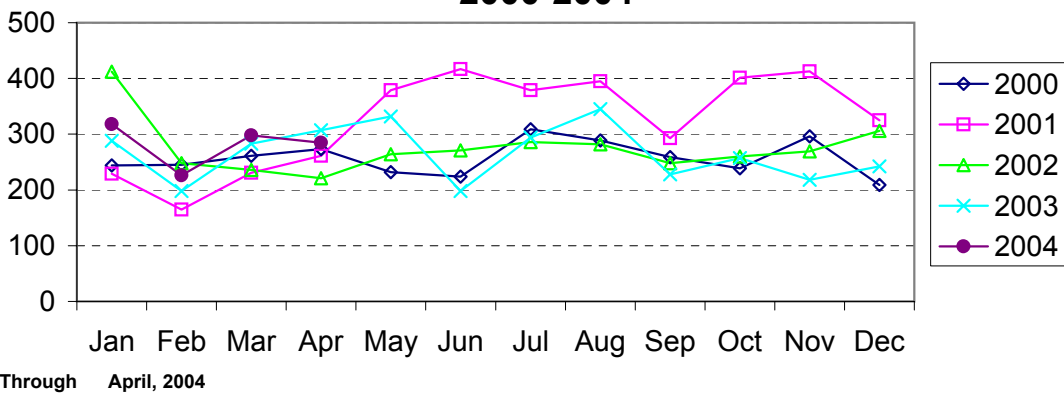
### Aggravated Assault Reported by Month Charlotte-Mecklenburg Police Department: 2000-2004



### Residential Burglary Reported by Month Charlotte-Mecklenburg Police Department: 2000- 2004

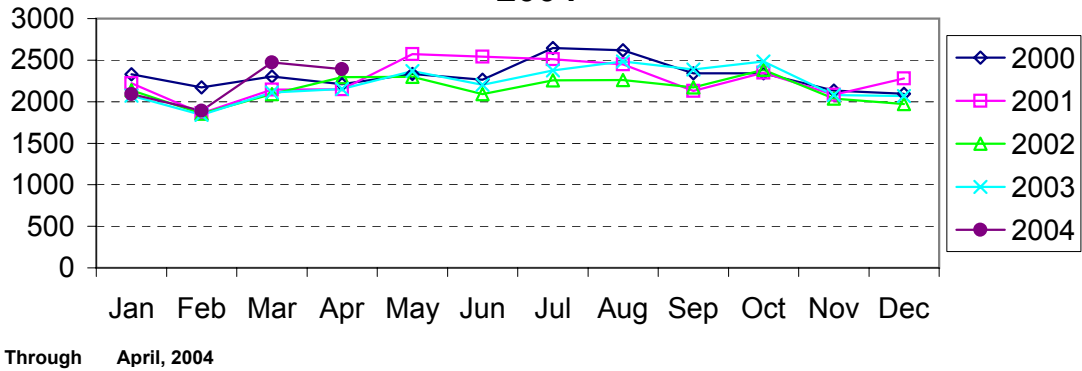


### Commercial Burglary Reported by Month Charlotte-Mecklenburg Police Department: 2000-2004

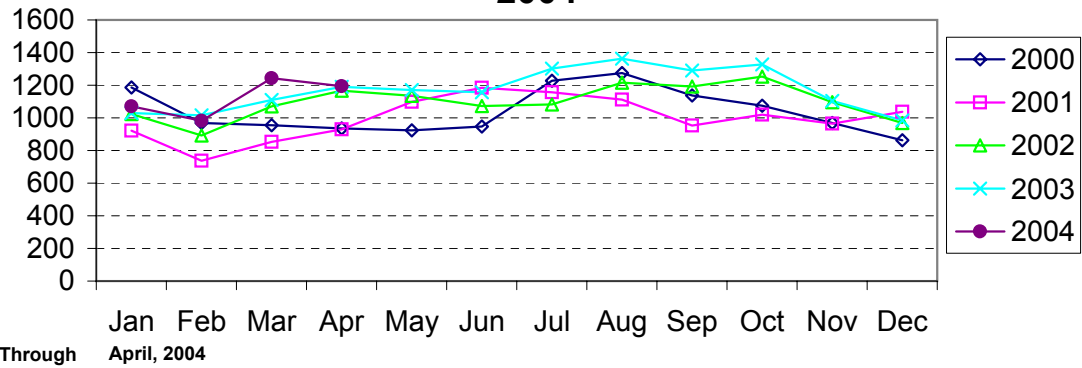




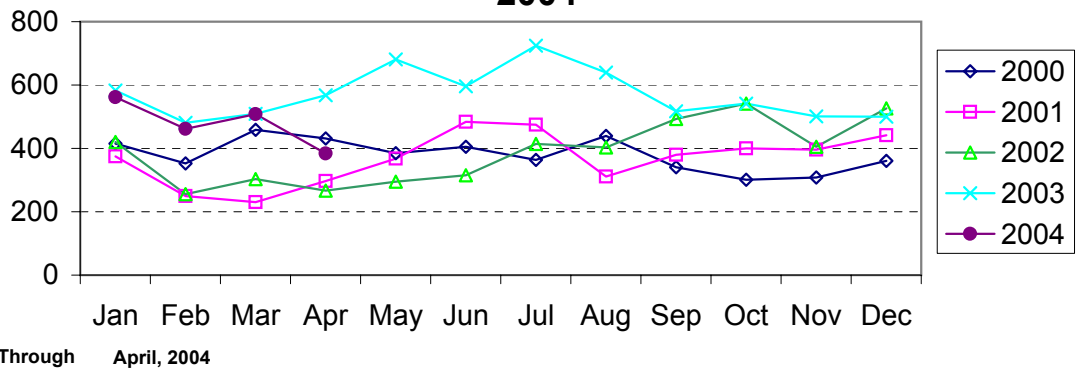
### Larceny Reported by Month Charlotte-Mecklenburg Police Department: 2000-2004



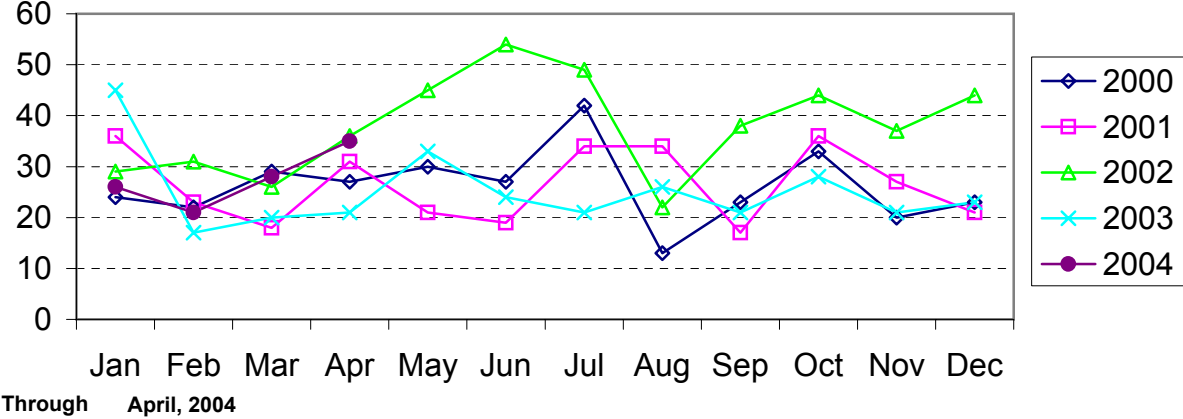
### Larceny from Vehicle Reported by Month Charlotte-Mecklenburg Police Department: 2000-2004



### Vehicle Theft Reported by Month Charlotte-Mecklenburg Police Department: 2000-2004



## Arson Reported by Month Charlotte-Mecklenburg Police Department: 2000-2004



Index Offenses Reported by Division and Service Area of Occurrence									
West Service Area: Jan-Apr, 2003-2004									
INDEX_CATEGORIES	Westover (A2)			Freedom (A3)			West Service Area		
	2003	2004	% Change	2003	2004	% Change	2003	2004	% Change
MURDER & NON-NEGLIGENT MANSLAUGHTER	1	0	-100.0%	1	0	-100.0%	2	0	-100.0%
RAPE	6	8	33.3%	14	5	-64.3%	20	13	-35.0%
ACTUAL	6	8	33.3%	12	5	-58.3%	18	13	-27.8%
ATTEMPTED	0	0	NA	2	0	-100.0%	2	0	-100.0%
ROBBERY	79	59	-25.3%	78	87	11.5%	157	146	-7.0%
ARMED	58	47	-19.0%	55	68	23.6%	113	115	1.8%
STRONG-ARM	21	12	-42.9%	23	19	-17.4%	44	31	-29.5%
AGGRAVATED ASSAULT	134	92	-31.3%	174	149	-14.4%	308	241	-21.8%
BURGLARY	277	273	-1.4%	434	459	5.8%	711	732	3.0%
RESIDENTIAL	178	172	-3.4%	260	313	20.4%	438	485	10.7%
COMMERCIAL	99	101	2.0%	174	146	-16.1%	273	247	-9.5%
LARCENY	459	553	20.5%	667	905	35.7%	1126	1458	29.5%
FROM AUTO	228	271	18.9%	318	439	38.1%	546	710	30.0%
BICYCLE	3	5	66.7%	3	5	66.7%	6	10	66.7%
SHOPLIFTING	58	66	13.8%	55	104	89.1%	113	170	50.4%
OTHERS	170	211	24.1%	291	357	22.7%	461	568	23.2%
VEHICLE THEFT	135	118	-12.6%	243	238	-2.1%	378	356	-5.8%
ARSON	7	10	42.9%	17	15	-11.8%	24	25	4.2%
TOTALS	1098	1113	1.4%	1628	1858	14.1%	2726	2971	9.0%
VIOLENT PROPERTY	220 878	159 954	-27.7% 8.7%	267 1361	241 1617	-9.7% 18.8%	487 2239	400 2571	-17.9% 14.8%

Index Offenses Reported by Division and Service Area of Occurrence									
Southeast Service Area: Jan-Apr, 2003-2004									
INDEX_CATEGORIES	Providence (B1)			Independence (B3)			Southeast Service Area		
	2003	2004	% Change	2003	2004	% Change	2003	2004	% Change
MURDER & NON-NEGLIGENT MANSLAUGHTER	0	0	NA	2	1	-50.0%	2	1	-50.0%
RAPE	5	6	20.0%	8	6	-25.0%	13	12	-7.7%
ACTUAL	5	6	20.0%	8	6	-25.0%	13	12	-7.7%
ATTEMPTED	0	0	NA	0	0	NA	0	0	NA
ROBBERY	44	44	0.0%	83	67	-19.3%	127	111	-12.6%
ARMED	36	33	-8.3%	70	52	-25.7%	106	85	-19.8%
STRONG-ARM	8	11	37.5%	14	15	7.1%	22	26	18.2%
AGGRAVATED ASSAULT	61	66	8.2%	96	100	4.2%	157	166	5.7%
BURGLARY	277	299	7.9%	305	335	9.8%	582	634	8.9%
RESIDENTIAL	157	162	3.2%	236	256	8.5%	393	418	6.4%
COMMERCIAL	120	137	14.2%	69	79	14.5%	189	216	14.3%
LARCENY	559	599	7.2%	884	756	-14.5%	1443	1355	-6.1%
FROM AUTO	287	280	-2.4%	494	446	-9.7%	781	726	-7.0%
BICYCLE	1	5	400.0%	10	4	-60.0%	11	9	-18.2%
SHOPLIFTING	67	57	-14.9%	89	52	-41.6%	156	109	-30.1%
OTHERS	204	257	26.0%	291	254	-12.7%	495	511	3.2%
VEHICLE THEFT	105	91	-13.3%	245	222	-9.4%	350	313	-10.6%
ARSON	3	7	133.3%	12	9	-25.0%	15	16	6.7%
TOTALS	1054	1112	5.5%	1635	1496	-8.5%	2689	2608	-3.0%
VIOLENT PROPERTY	110 944	116 996	5.5% 5.5%	189 1446	174 1322	-7.9% -8.6%	299 2390	290 2318	-3.0% -3.0%

The data in the district breakdowns does not include a small number of offenses in which the location of the offense was unknown or was entered without a valid tract assignment. Districts are not equal in geographic size, demographics, zoning/development, and other factors that influence the rate of crimes committed in an area. Therefore, the comparison of raw offense totals across districts is not advisable.

Index Offenses Reported by Division and Service Area of Occurrence									
Northeast Service Area: Jan-Apr, 2003-2004									
INDEX_CATEGORIES	North (C1)			Hickory Grove (C3)			Northeast Service Area		
	2003	2004	% Change	2003	2004	% Change	2003	2004	% Change
MURDER & NON-NEGLIGENT MANSLAUGHTER	3	1	-66.7%	4	1	-75.0%	7	2	-71.4%
RAPE	10	14	40.0%	8	8	0.0%	18	22	22.2%
ACTUAL	9	13	44.4%	7	8	14.3%	16	21	31.3%
ATTEMPTED	1	1	0.0%	1	0	-100.0%	2	1	-50.0%
ROBBERY	57	70	22.8%	79	76	-3.8%	136	146	7.4%
ARMED	47	56	19.1%	67	60	-10.4%	114	116	1.8%
STRONG-ARM	10	14	40.0%	12	16	33.3%	22	30	36.4%
AGGRAVATED ASSAULT	111	114	2.7%	109	168	54.1%	220	282	28.2%
BURGLARY	379	424	11.9%	324	375	15.7%	703	799	13.7%
RESIDENTIAL	257	293	14.0%	253	281	11.1%	510	574	12.5%
COMMERCIAL	122	131	7.4%	71	94	32.4%	193	225	16.6%
LARCENY	1126	1293	14.8%	715	672	-6.0%	1841	1965	6.7%
FROM AUTO	693	743	7.2%	368	327	-11.1%	1061	1070	0.8%
BICYCLE	3	9	200.0%	4	9	125.0%	7	18	157.1%
SHOPLIFTING	101	117	15.8%	78	53	-32.1%	179	170	-5.0%
OTHERS	329	424	28.9%	265	283	6.8%	594	707	19.0%
VEHICLE THEFT	225	231	2.7%	268	192	-28.4%	493	423	-14.2%
ARSON	12	10	-16.7%	13	15	15.4%	25	25	0.0%
TOTALS	1923	2157	12.2%	1520	1507	-0.9%	3443	3664	6.4%
VIOLENT PROPERTY	181 1742	199 1958	9.9% 12.4%	200 1320	253 1254	26.5% -5.0%	381 3062	452 3212	18.6% 4.9%

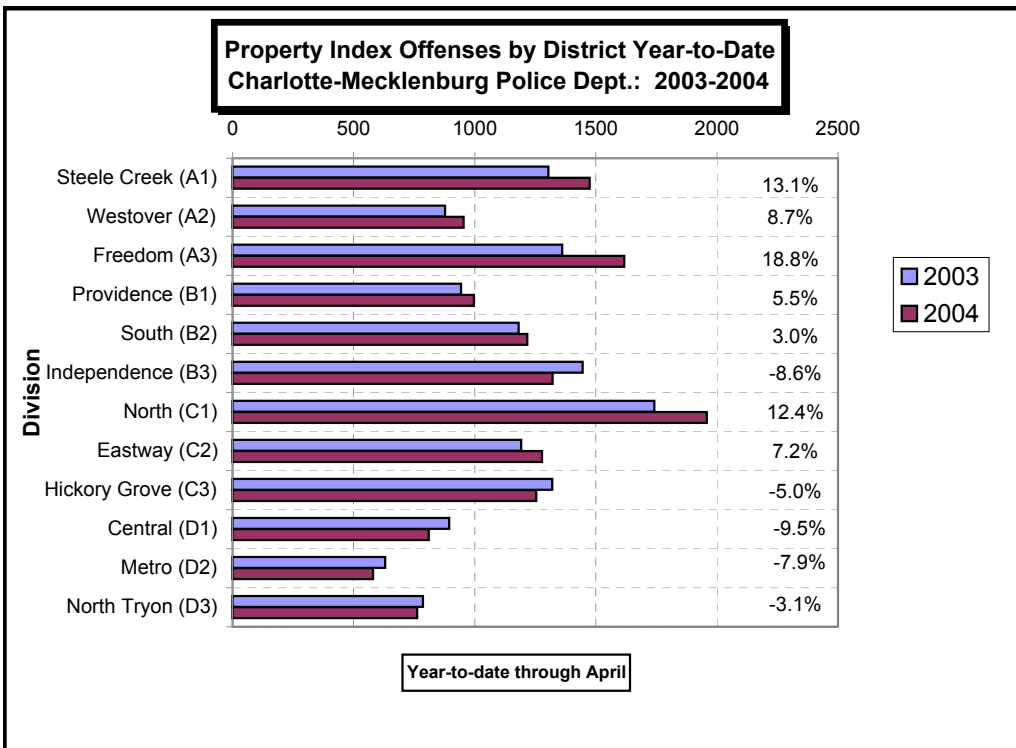
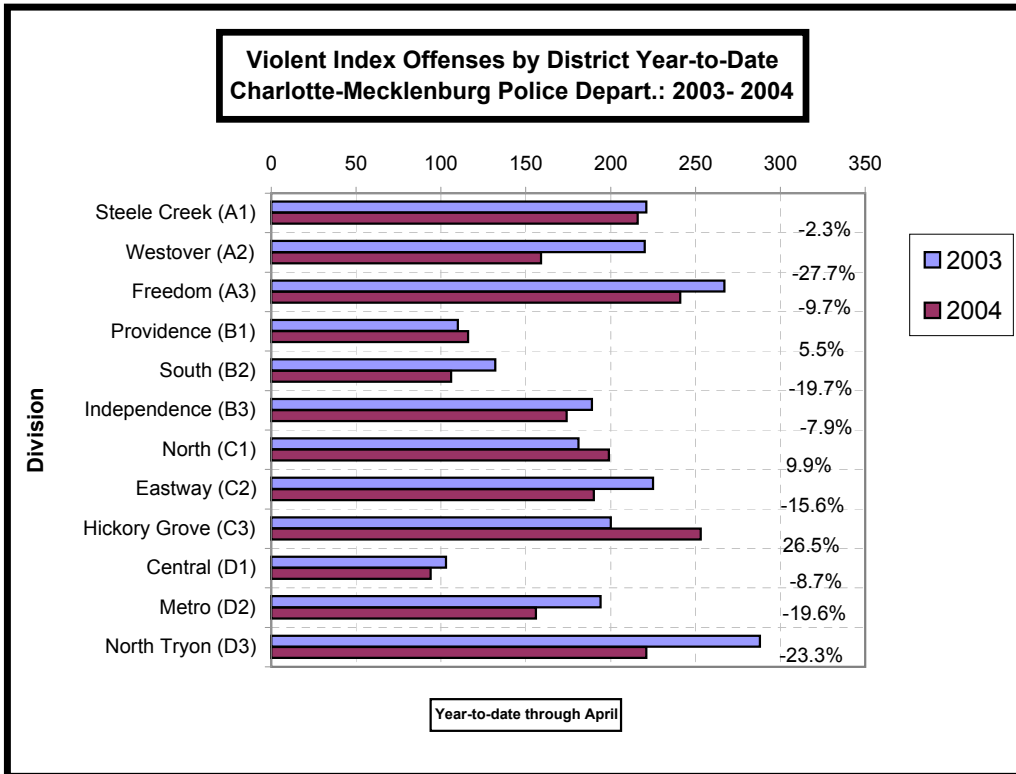
Index Offenses Reported by Division and Service Area of Occurrence									
Central Service Area: Jan-Apr, 2003-2004									
INDEX_CATEGORIES	Central (D1)			Metro (D2)			Central Service Area		
	2003	2004	% Change	2003	2004	% Change	2003	2004	% Change
MURDER & NON-NEGLIGENT MANSLAUGHTER	2	0	-100.0%	1	3	200.0%	3	3	0.0%
RAPE	4	6	50.0%	7	11	57.1%	11	17	54.5%
ACTUAL	4	5	25.0%	6	10	66.7%	10	15	50.0%
ATTEMPTED	0	1	NA	1	1	0.0%	1	2	100.0%
ROBBERY	33	39	18.2%	68	49	-27.9%	101	88	-12.9%
ARMED	18	22	22.2%	49	42	-14.3%	67	64	-4.5%
STRONG-ARM	15	17	13.3%	19	7	-63.2%	34	24	-29.4%
AGGRAVATED ASSAULT	64	49	-23.4%	118	93	-21.2%	182	142	-22.0%
BURGLARY	125	120	-4.0%	200	166	-17.0%	325	286	-12.0%
RESIDENTIAL	59	44	-25.4%	149	125	-16.1%	208	169	-18.8%
COMMERCIAL	66	76	15.2%	51	41	-19.6%	117	117	0.0%
LARCENY	607	601	-1.0%	303	310	2.3%	910	911	0.1%
FROM AUTO	324	320	-1.2%	161	132	-18.0%	485	452	-6.8%
BICYCLE	0	5	NA	2	1	-50.0%	2	6	200.0%
SHOPLIFTING	18	21	16.7%	10	26	160.0%	28	47	67.9%
OTHERS	265	255	-3.8%	130	151	16.2%	395	406	2.8%
VEHICLE THEFT	159	89	-44.0%	120	99	-17.5%	279	188	-32.6%
ARSON	4	0	-100.0%	7	5	-28.6%	11	5	-54.5%
TOTALS	998	904	-9.4%	824	736	-10.7%	1822	1640	-10.0%
VIOLENT PROPERTY	103 895	94 810	-8.7% -9.5%	194 630	156 580	-19.6% -7.9%	297 1525	250 1390	-15.8% -8.9%

The data in the district breakdowns does not include a small number of offenses in which the location of the offense was unknown or was entered without a valid tract assignment. Districts are not equal in geographic size, demographics, zoning/development, and other factors that influence the rate of crimes committed in an area. Therefore, the comparison of raw offense totals across districts is not advisable.

Index Offenses Reported by Division and Service Area of Occurrence									
East Service Area: Jan-Apr, 2003-2004									
INDEX_CATEGORIES	Eastway (C2)			North Tryon (D3)			East Service Area		
	2003	2004	% Change	2003	2004	% Change	2003	2004	% Change
MURDER & NON-NEGLIGENT MANSLAUGHTER	1	3	200.0%	1	2	100.0%	2	5	150.0%
RAPE	2	7	250.0%	8	8	0.0%	10	15	50.0%
ACTUAL	2	7	250.0%	8	7	-12.5%	10	14	40.0%
ATTEMPTED	0	0	NA	0	1	NA	0	1	NA
ROBBERY	120	84	-30.0%	113	74	-34.5%	233	158	-32.2%
ARMED	97	60	-38.1%	94	55	-41.5%	191	115	-39.8%
STRONG-ARM	23	24	4.3%	19	19	0.0%	42	43	2.4%
AGGRAVATED ASSAULT	102	96	-5.9%	166	137	-17.5%	268	233	-13.1%
BURGLARY	287	312	8.7%	225	216	-4.0%	512	528	3.1%
RESIDENTIAL	210	203	-3.3%	162	154	-4.9%	372	357	-4.0%
COMMERCIAL	77	109	41.6%	63	62	-1.6%	140	171	22.1%
LARCENY	741	799	7.8%	379	411	8.4%	1120	1210	8.0%
FROM AUTO	369	300	-18.7%	211	201	-4.7%	580	501	-13.6%
BICYCLE	7	7	0.0%	3	4	33.3%	10	11	10.0%
SHOPLIFTING	152	239	57.2%	25	28	12.0%	177	267	50.8%
OTHERS	213	253	18.8%	140	178	27.1%	353	431	22.1%
VEHICLE THEFT	159	156	-1.9%	177	131	-26.0%	336	287	-14.6%
ARSON	5	11	120.0%	5	4	-20.0%	10	15	50.0%
TOTALS	1417	1468	3.6%	1074	983	-8.5%	2491	2451	-1.6%
VIOLENT	225	190	-15.6%	288	221	-23.3%	513	411	-19.9%
PROPERTY	1192	1278	7.2%	786	762	-3.1%	1978	2040	3.1%

Index Offenses Reported by Division and Service Area of Occurrence									
South Service Area: Jan-Apr, 2003-2004									
INDEX_CATEGORIES	Steele Creek (A1)			South (B2)			South Service Area		
	2003	2004	% Change	2003	2004	% Change	2003	2004	% Change
MURDER & NON-NEGLIGENT MANSLAUGHTER	3	5	66.7%	0	0	NA	3	5	66.7%
RAPE	11	10	-9.1%	8	7	-12.5%	19	17	-10.5%
ACTUAL	10	10	0.0%	7	7	0.0%	17	17	0.0%
ATTEMPTED	1	0	-100.0%	1	0	-100.0%	2	0	-100.0%
ROBBERY	103	61	-40.8%	50	39	-22.0%	153	100	-34.6%
ARMED	67	47	-29.9%	35	29	-17.1%	102	76	-25.5%
STRONG-ARM	26	14	-46.2%	15	10	-33.3%	41	24	-41.5%
AGGRAVATED ASSAULT	104	140	34.6%	74	60	-18.9%	178	200	12.4%
BURGLARY	250	302	20.8%	282	267	-5.3%	532	569	7.0%
RESIDENTIAL	157	225	43.3%	224	214	-4.5%	381	439	15.2%
COMMERCIAL	93	77	-17.2%	58	53	-8.6%	151	130	-13.9%
LARCENY	875	958	9.5%	779	828	6.3%	1654	1786	8.0%
FROM AUTO	418	493	17.9%	434	457	5.3%	852	950	11.5%
BICYCLE	6	6	0.0%	3	2	-33.3%	9	8	-11.1%
SHOPLIFTING	135	159	17.8%	58	48	-17.2%	193	207	7.3%
OTHERS	316	300	-5.1%	284	321	13.0%	600	621	3.5%
VEHICLE THEFT	174	201	15.5%	110	113	2.7%	284	314	10.6%
ARSON	5	14	180.0%	10	9	-10.0%	15	23	53.3%
TOTALS	1525	1691	10.9%	1313	1323	0.8%	2838	3014	6.2%
VIOLENT	221	216	-2.3%	132	106	-19.7%	353	322	-8.8%
PROPERTY	1304	1475	13.1%	1181	1217	3.0%	2485	2692	8.3%

The data in the district breakdowns does not include a small number of offenses in which the location of the offense was unknown or was entered without a valid tract assignment. Districts are not equal in geographic size, demographics, zoning/development, and other factors that influence the rate of crimes committed in an area. Therefore, the comparison of raw offense totals across districts is not advisable.



The data in the district breakdowns does not include a small number of offenses in which the location of the offense was unknown or was entered without a valid tract assignment. Districts are not equal in geographic size, demographics, zoning/development, and other factors that influence the rate of crimes committed in an area. Therefore, the comparison of raw offense totals across districts is not advisable.

**Arrests by Charlotte-Mecklenburg Police Department**  
**Year-To-Date: 2003-2004**  
**(Through April)**

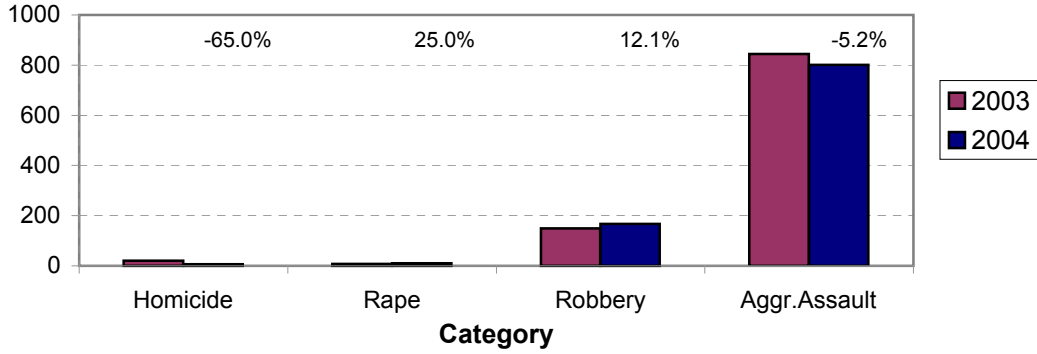
CATEGORY	ADULTS (AGE 18 & OLDER):			JUVENILES ( UNDER 18):			TOTAL ARRESTS:		
	2003 Y-T-D	2004 Y-T-D	% CHANGE	2003 Y-T-D	2004 Y-T-D	% CHANGE	2003 Y-T-D	2004 Y-T-D	% CHANGE
Murder/Non-Negligent Manslaughter	19	7	-63.2%	1	0	-100.0%	20	7	-65.0%
Negligent & Vehicular Manslaughter	0	3	NA	0	0	NA	0	3	NA
Rape	8	9	12.5%	0	1	NA	8	10	25.0%
Robbery	110	108	-1.8%	39	59	51.3%	149	167	12.1%
Aggravated Assault	708	666	-5.9%	137	135	-1.5%	845	801	-5.2%
Burglary	149	184	23.5%	77	63	-18.2%	226	247	9.3%
Larceny	460	511	11.1%	225	212	-5.8%	685	723	5.5%
Vehicle Theft	41	33	-19.5%	133	65	-51.1%	174	98	-43.7%
Non-Aggravated Assault	547	598	9.3%	311	319	2.6%	858	917	6.9%
Arson	10	6	-40.0%	11	10	-9.1%	21	16	-23.8%
Forgery/Counterfiet	36	39	8.3%	2	2	0.0%	38	41	7.9%
Fraud	166	185	11.4%	4	3	-25.0%	170	188	10.6%
Embezzlement	34	26	-23.5%	2	4	100.0%	36	30	-16.7%
Stolen Property	178	152	-14.6%	61	32	-47.5%	239	184	-23.0%
Vandalism	85	78	-8.2%	62	76	22.6%	147	154	4.8%
Weapons	160	143	-10.6%	22	21	-4.5%	182	164	-9.9%
Prostitution	47	95	102.1%	0	5	NA	47	100	112.8%
Sex Offenses	47	59	25.5%	18	5	-72.2%	65	64	-1.5%
Drugs	1157	931	-19.5%	109	87	-20.2%	1266	1018	-19.6%
Gambling	14	10	-28.6%	0	0	NA	14	10	-28.6%
Offenses vs. Family	4	1	-75.0%	0	1	NA	4	2	-50.0%
DUI	661	631	-4.5%	1	5	400.0%	662	636	-3.9%
Liquor	47	67	42.6%	4	2	-50.0%	51	69	35.3%
Disorder Conduct	151	161	6.6%	113	120	6.2%	264	281	6.4%
Other Non-Traffic	2333	2598	11.4%	269	298	10.8%	2602	2896	11.3%
<b>VIOLENT INDEX<sup>1</sup></b>	845	790	-6.5%	177	195	10.2%	1022	985	-3.6%
<b>PROPERTY INDEX<sup>2</sup></b>	660	734	11.2%	446	350	-21.5%	1106	1084	-2.0%
<b>INDEX SUBTOTAL</b>	1505	1524	1.3%	623	545	-12.5%	2128	2069	-2.8%
<b>PART 2 SUBTOTAL<sup>3</sup></b>	5667	5777	1.9%	978	980	0.2%	6645	6757	1.7%
<b>TOTAL</b>	7172	7301	1.8%	1601	1525	-4.7%	8773	8826	0.6%

<sup>1</sup>Violent Index includes murder and non-negligent manslaughter, rape, robbery, and aggravated assault.

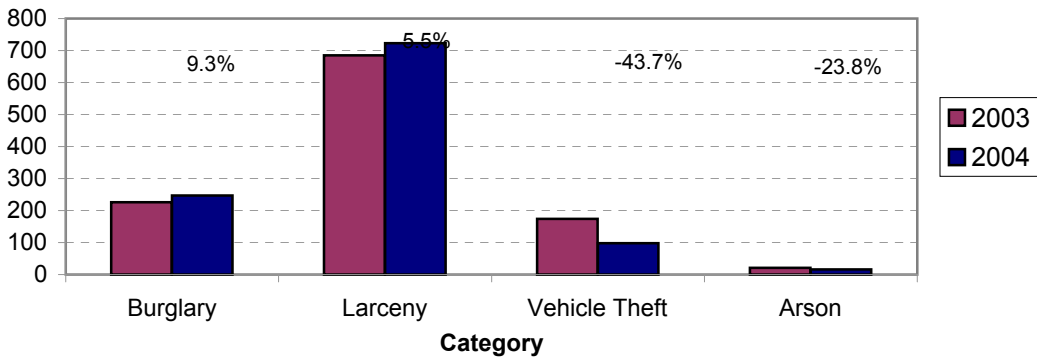
<sup>2</sup>Property Index includes burglary, larceny, vehicle theft, and arson.

<sup>3</sup>Part 2 crimes include non-traffic crimes not counted in the Index totals.

**Violent Index Arrests Year-to-Date  
Charlotte-Mecklenburg Police Department: 2003-2004  
(Through April)**

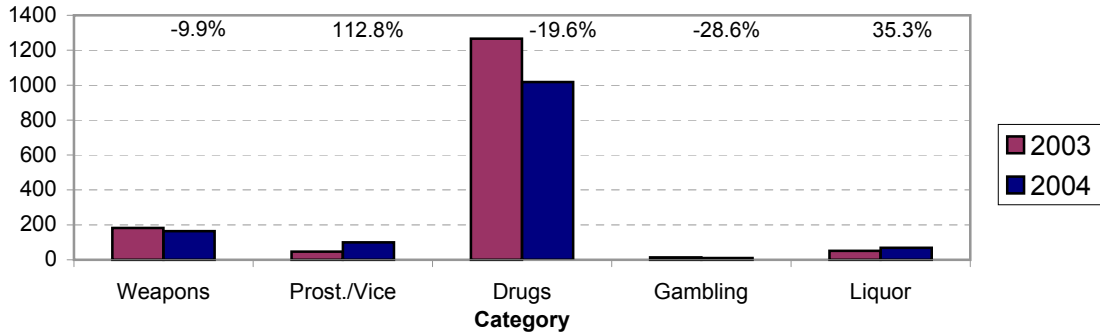


**Property Index Arrests Year-to-Date  
Charlotte-Mecklenburg Police Department: 2003-2004  
(Through April)**

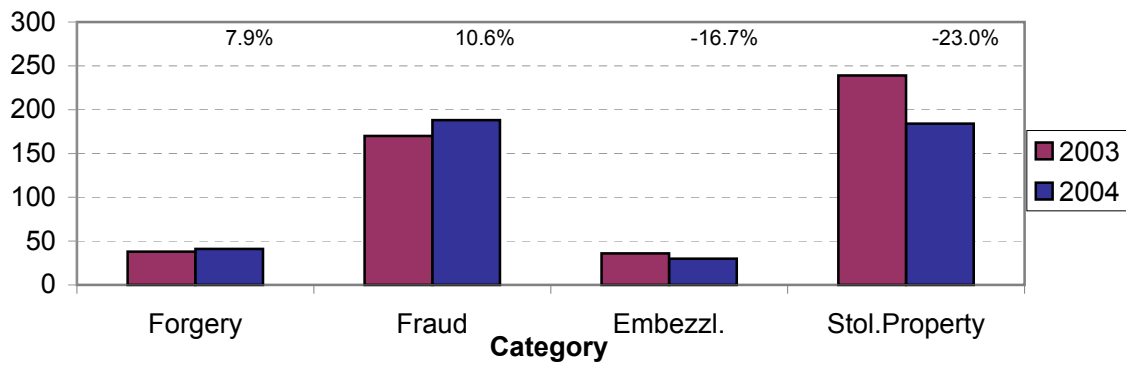




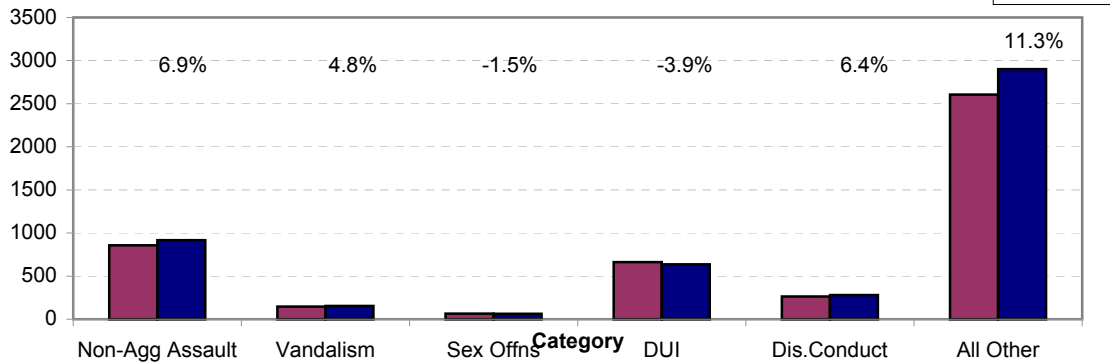
**Arrests for Vice/CCW/Drugs/Etc. Year-to-Date  
Charlotte-Mecklenburg Police Department: 2003 - 2004  
(Through April)**



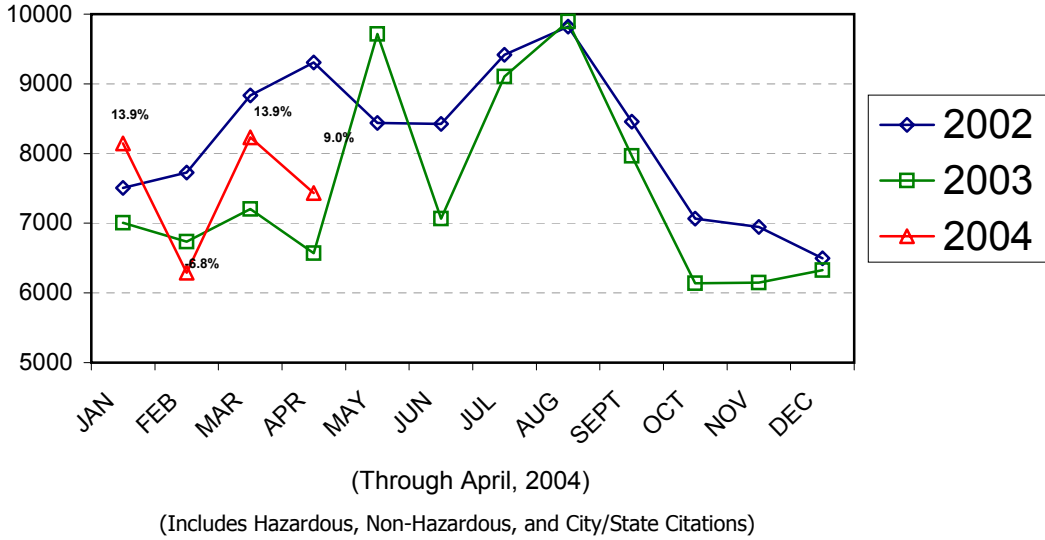
**Arrests for Property/White Collar Crime Year-to-Date  
Charlotte-Mecklenburg Police Department: 2003 - 2004  
(Through April)**



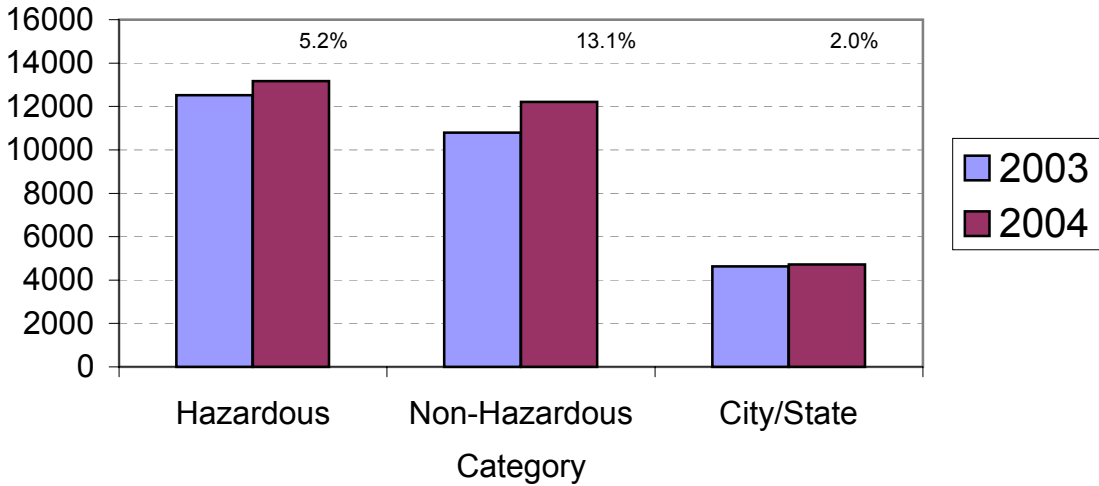
**Arrests for Other Categories Year-to-Date  
Charlotte-Mecklenburg Police Department: 2003 - 2004  
(Through April)**



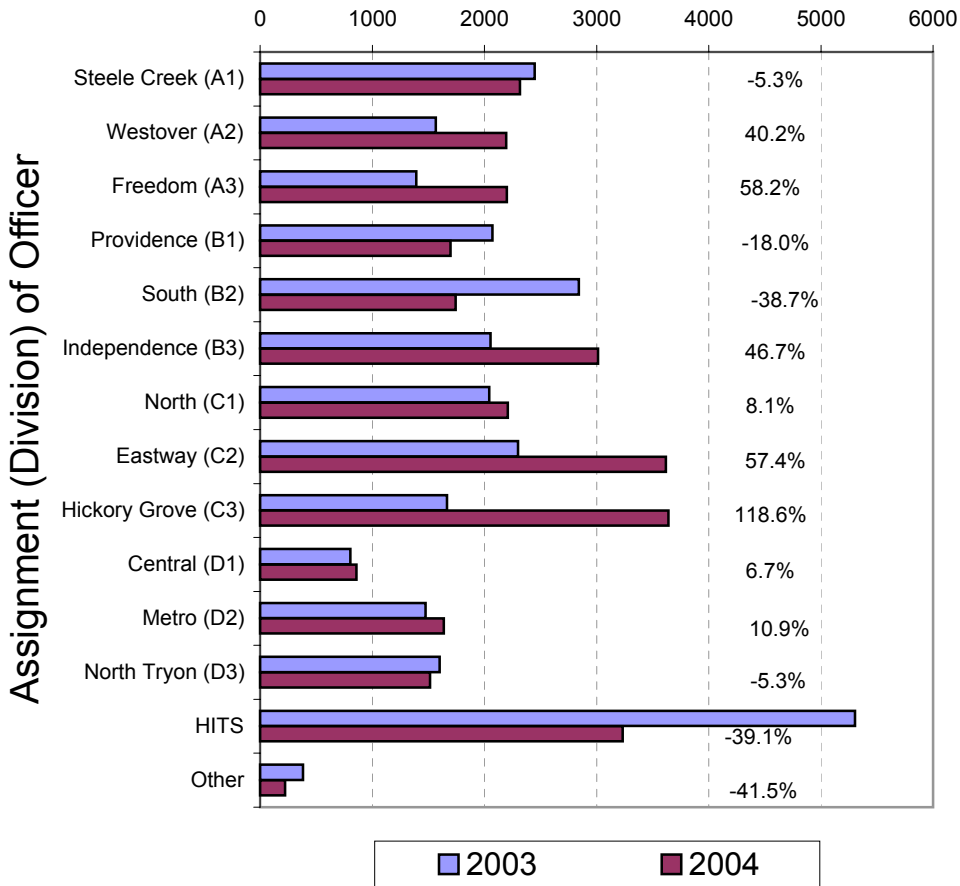
**Total Citation Enforcement by Month  
Charlotte-Mecklenburg Police Dept.: 2002-2004**



**CMPD Citation Enforcement by Category  
Year-to-Date, 2003 - 2004  
(Through April, 2004)**



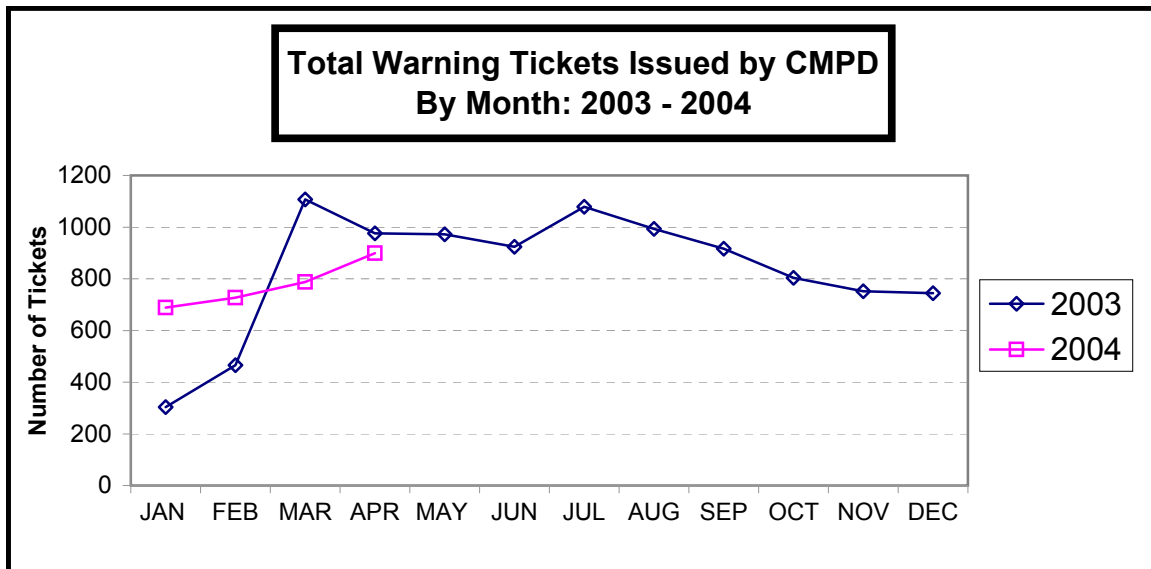
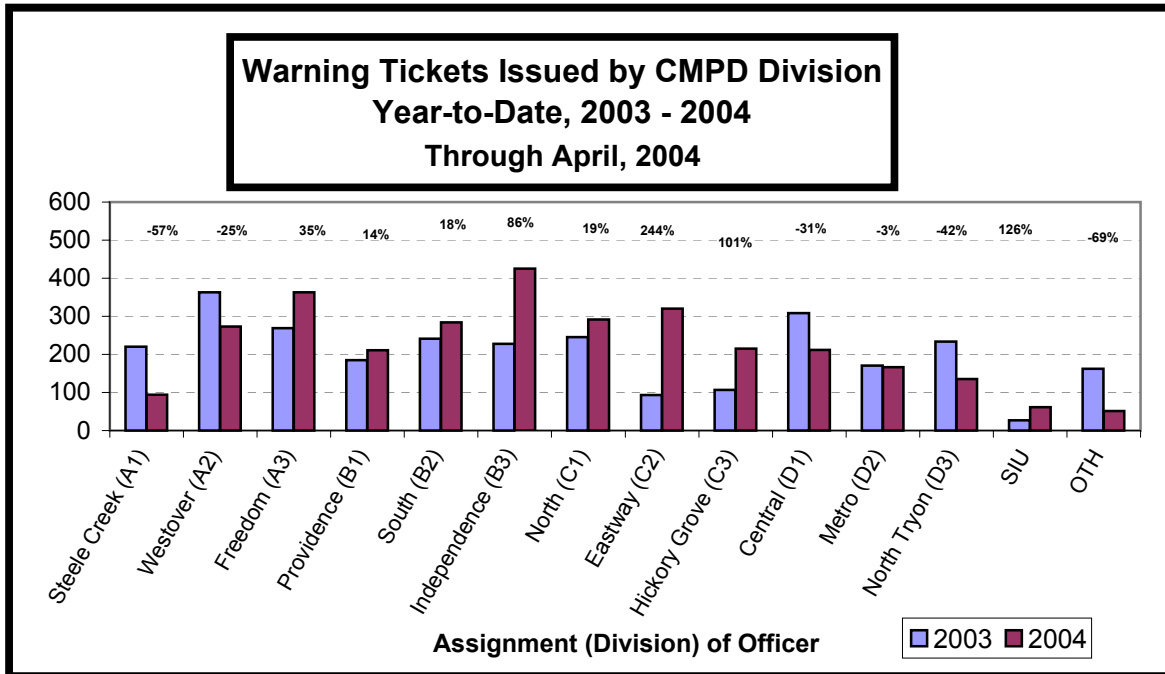
**Citations Issued Year-to-Date by CMPD Divisions  
2003 - 2004  
(Through April, 2004)**



Note: 2003 and 2004 data for HITS and Other was adjusted in April, 2004.

**Citations Issued by the Charlotte Mecklenburg Police Dept. Year-to-Date  
(Through April, 2004)**

Total Citations	2003	2004	% Change
Hazardous	12,525	13,171	5.2%
Non-Hazardous	10,789	12,206	13.1%
Other City/State Statute/Ordinance	4,630	4,721	2.0%
<b>Total</b>	<b>27,944</b>	<b>30,098</b>	<b>7.7%</b>



### Warning Tickets Issued by CMPD Year-to-Date Through April, 2004

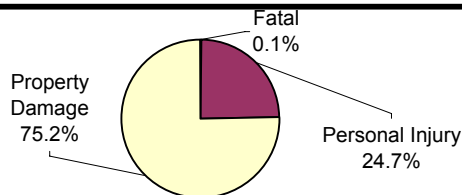
	2003	2004	% Change
<b>Total Warning Tickets</b>	2853	3102	8.7%

**Traffic Collison Reports  
Charlotte-Mecklenburg Police Department  
Year-to-Date: 2003-2004  
(Through April)**

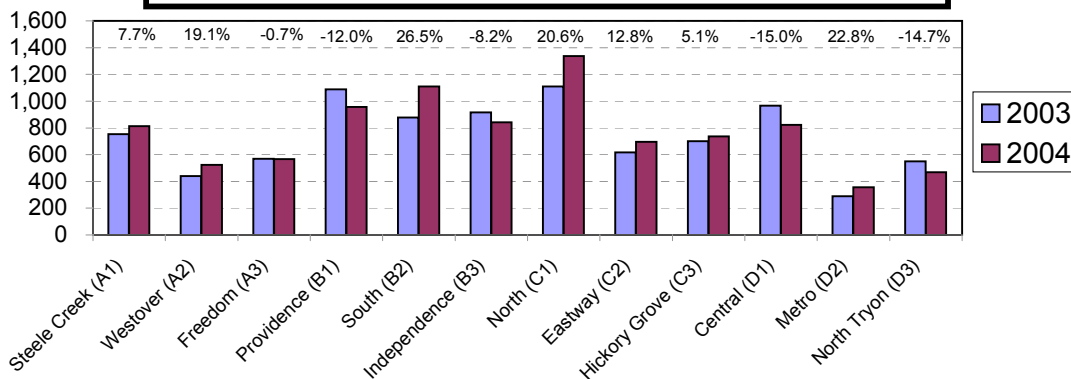
<u>Type</u>	<u>2003</u>	<u>2004</u>	<u>% Change</u>
Fatal Collisions	21	13	-38.1%
Vehicle Occupants Killed	23	11	-52.2%
Pedestrians Killed	2	3	50.0%
Personal Injury Collisions	2121	2274	6.8%
Property Damage Collisions	6831	6976	2.1%
Total Collisions	8973	9263	3.2%

\* The number of fatal collisions and the number of persons killed in those incidents is taken from the HITS file. Their records are updated for deaths that occur after the initial report is filed.

**Traffic Collisions Reported by Type  
Charlotte-Mecklenburg Police Department:  
2004 Year-to-Date  
(Through April)**



**Traffic Collisions Reported by Charlotte-Mecklenburg Police Dept.  
Year-to-Date By Location (Division) : 2003 -2004  
(Through April)**



Uniform Crime Reporting Procedures:

The Charlotte-Mecklenburg Police Department reports offense and arrest statistics in accordance with standard Uniform Crime Reporting (UCR) guidelines. UCR policy states that any adjustments to previous months can be made on the current month's report:

...In tabulating crime counts, an agency may find that offense totals for past months require adjustments due to developments in the investigation or other handling of the matter. It may be necessary to adjust totals reported to UCR for the past month or prior months. Needed adjustments can be made on the current month's report and do not affect the reliability of the figures in that such adjustments tend to equalize each other from month to month over a period of time.

- *Uniform Crime Reporting Handbook*, FBI, 1984, p. 42-43

We are required to report crime monthly to the UCR program, and we do therefore make an effort to process monthly changes in a timely manner. However, occasionally due to the review and processing required for reclassifying, unfounding or clearing cases, the current month's totals may reflect the processing of a backlog of these changes from previous months.

Users of the data are cautioned that conclusions about substantial changes in crime trends or in clearance rates based on only a single month's data or trend may reflect some of these adjustments. For this reason, in addition to the monthly and year-to-date trends on Page 1, the monthly report routinely includes a comparison for the previous 12 months (p. 4), as well as graphs that provide seasonal/monthly comparisons over a five-year period (p. 5-8).

We do make an effort to present the most accurate information available at the time this report is published. However, errors in compiling the data and charts do sometimes occur, so please notify the Research, Planning, and Analysis office if you have any questions about the data in this report.

The new division names are used in this report. For ease of use, they also include the old district designations in parentheses.

V. L. Sorban  
Research, Planning & Analysis Bureau