



**CHARLOTTE-MECKLENBURG POLICE DEPARTMENT
MONTHLY SUMMARY REPORT
DECEMBER, 2003**

**Darrel Stephens
Chief of Police**

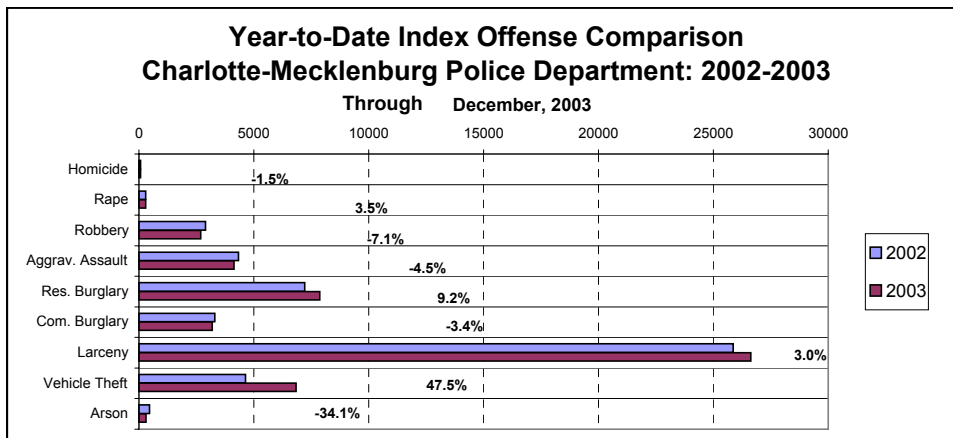
INDEX OFFENSES REPORTED TO CHARLOTTE-MECKLENBURG POLICE DEPARTMENT

December, 2003 INDEX OFFENSES	# THIS MONTH	% OF ALL INDEX	# LAST MONTH	MONTHLY % CHANGE	SAME MONTH LAST YEAR	MONTHLY % CHANGE	THIS YEAR TO DATE	LAST YEAR TO DATE	ANNUAL % CHANGE
HOMICIDE (MURDER & NON- NEGLIGENT MANSLAUGHTER)	3	0.1%	8	-62.5%	5	-40.0%	66	67	-1.5%
RAPE TOTAL	21	0.5%	24	-12.5%	21	0.0%	299	289	3.5%
ACTUAL	22	0.5%	24	-8.3%	20	10.0%	266	255	4.3%
ATTEMPT	-1	0.0%	0	NA	1	-200.0%	33	34	-2.9%
ROBBERY TOTAL	271	6.6%	226	19.9%	322	-15.8%	2688	2893	-7.1%
ARMED	225	5.5%	176	27.8%	270	-16.7%	2121	2277	-6.9%
STRONG-ARM	46	1.1%	50	-8.0%	52	-11.5%	567	616	-8.0%
AGGRAVATED ASSAULT TOTAL	268	6.6%	330	-18.8%	305	-12.1%	4137	4334	-4.5%
BURGLARY TOTAL	923	22.6%	895	3.1%	1027	-10.1%	11066	10516	5.2%
RESIDENTIAL	681	16.7%	677	0.6%	721	-5.5%	7876	7213	9.2%
COMMERCIAL	242	5.9%	218	11.0%	306	-20.9%	3190	3303	-3.4%

FORCE	729	17.9%	722	1.0%	842	-13.4%	8739	8201	6.6%
NO FORCE	125	3.1%	133	-6.0%	116	7.8%	1639	1580	3.7%
ATTEMPT	69	1.7%	40	72.5%	69	0.0%	678	735	-7.8%
LARCENY TOTAL	2069	50.7%	2079	-0.5%	1971	5.0%	26628	25860	3.0%
\$200 AND OVER	951	23.3%	1046	-9.1%	936	1.6%	13209	12478	5.9%
\$50 TO \$200	432	10.6%	352	22.7%	388	11.3%	4800	4888	-1.8%
UNDER \$50	686	16.8%	681	0.7%	647	6.0%	8619	8494	1.5%

FROM AUTO	985	24.2%	1104	-10.8%	969	1.7%	14044	13171	6.6%
BICYCLE	10	0.2%	11	-9.1%	5	100.0%	206	173	19.1%
SHOPLIFTING	255	6.3%	264	-3.4%	254	0.4%	2777	3182	-12.7%
OTHERS	819	20.1%	700	17.0%	743	10.2%	9601	9334	2.9%
VEHICLE THEFT TOTAL	500	12.3%	501	-0.2%	526	-4.9%	6840	4638	47.5%
ARSON TOTAL	23	0.6%	21	9.5%	44	-47.7%	300	455	-34.1%
TOTALS	4078	100.0%	4084	-0.1%	4221	-3.4%	52024	49052	6.1%
VIOLENT PROPERTY	563 3515	13.8% 86.2%	588 3496	-4.3% 0.5%	653 3568	-13.8% -1.5%	7190 44834	7583 41469	-5.2% 8.1%

NOTE: These totals include offenses reported to the Charlotte-Mecklenburg Police Department in accordance with the Uniform Crime Reporting Program. Totals for homicide do not include cases investigated by the police but classed by UCR guidelines as negligent manslaughter or as "justifiable homicide."

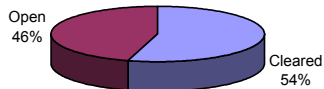


INDEX CLEARANCES REPORTED BY THE CHARLOTTE-MECKLENBURG POLICE DEPARTMENT

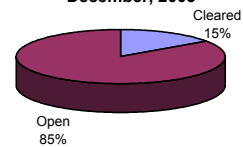
December, 2003 INDEX CLEARANCES	THIS MONTH:		LAST MONTH:		SAME MO. LAST YR:		THIS YEAR TO DATE:		LAST YEAR TO DATE:	
	NO.	%	NO.	%	NO.	%	NO.	%	NO.	%
MURDER & NON-NEGLIGENT MANSLAUGHTER	10	333.3%	4	50.0%	8	160.0%	43	65.2%	46	68.7%
RAPE TOTAL	22	104.8%	37	154.2%	11	52.4%	230	76.9%	136	47.1%
ACTUAL	23	104.5%	36	150.0%	11	55.0%	209	78.6%	121	47.5%
ATTEMPT	-1	100.0%	1	#DIV/0!	0	0.0%	21	63.6%	15	44.1%
ROBBERY TOTAL	87	32.1%	123	54.4%	85	26.4%	660	24.6%	640	22.1%
ARMED	72	32.0%	73	41.5%	68	25.2%	451	21.3%	460	20.2%
STRONG-ARM	15	32.6%	50	100.0%	17	32.7%	209	36.9%	180	29.2%
AGGRAVATED ASSAULT TOTAL	205	76.5%	848	257.0%	232	76.1%	2984	72.1%	2301	53.1%
BURGLARY TOTAL	45	4.9%	213	23.8%	73	7.1%	1365	12.3%	957	9.1%
RESIDENTIAL	36	5.3%	157	23.2%	54	7.5%	938	11.9%	748	10.4%
COMMERCIAL	9	3.7%	56	25.7%	19	6.2%	427	13.4%	209	6.3%
LARCENY TOTAL	224	10.8%	811	39.0%	272	13.8%	3950	14.8%	3053	11.8%
FROM AUTO	30	3.0%	14	1.3%	30	3.1%	435	3.1%	369	2.8%
BICYCLE	0	0.0%	5	45.5%	0	0.0%	23	11.2%	16	9.2%
SHOPLIFTING	127	49.8%	244	92.4%	147	57.9%	1654	59.6%	1670	52.5%
OTHERS	67	8.2%	422	60.3%	95	12.8%	1712	17.8%	998	10.7%
VEHICLE THEFT TOTAL	87	17.4%	191	38.1%	103	19.6%	1446	21.1%	851	18.3%
ARSON TOTAL	9	39.1%	5	23.8%	11	25.0%	78	26.0%	99	21.8%
TOTALS	689	16.9%	2232	54.7%	795	18.8%	10756	20.7%	8083	16.5%
VIOLENT PROPERTY	324	57.5%	1012	172.1%	336	51.5%	3917	54.5%	3123	41.2%
	365	10.4%	1220	34.9%	459	12.9%	6839	15.3%	4960	12.0%

NOTE: Clearances are reported in accordance with Uniform Crime Report guidelines. Since clearances are not counted until they are entered into the Records system, any delays in processing may result in some clearances being reported in succeeding months.

**Year-to-Date Violent Index Clearance Rate
Charlotte-Mecklenburg Police Department: 2003
December, 2003**

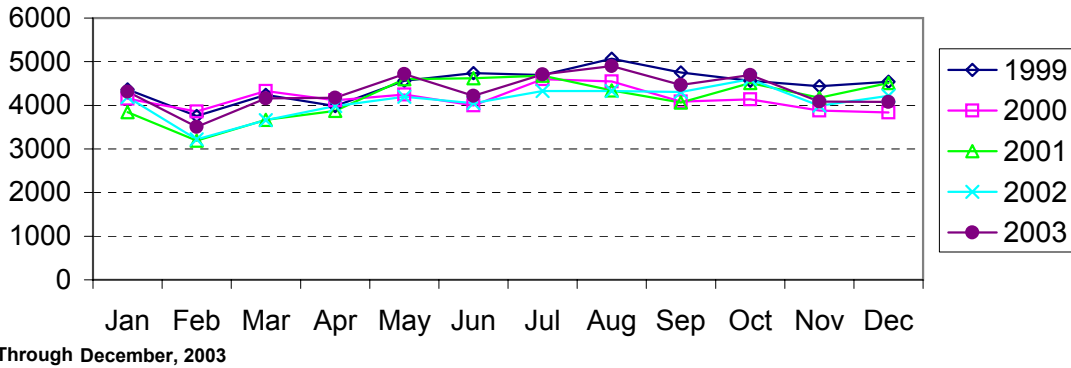


**Year-to-Date Property Index Clearance Rate
Charlotte-Mecklenburg Police Department: 2003
December, 2003**

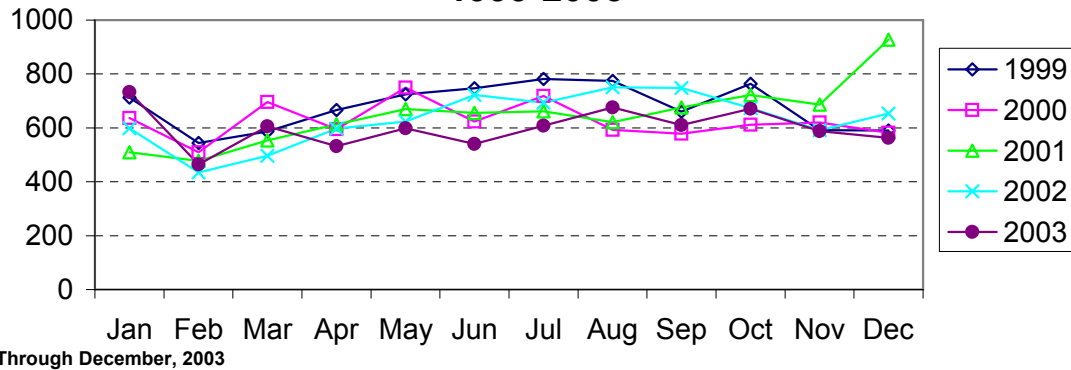


Clearance rates for crime reporting are calculated by dividing the number of crimes cleared during a designated time span by the number of crimes reported in the same period and converting the result to a percentage (multiplying by 100). Since cases from previous reporting periods can be cleared during the designated time span, the rate may be higher than 100%.

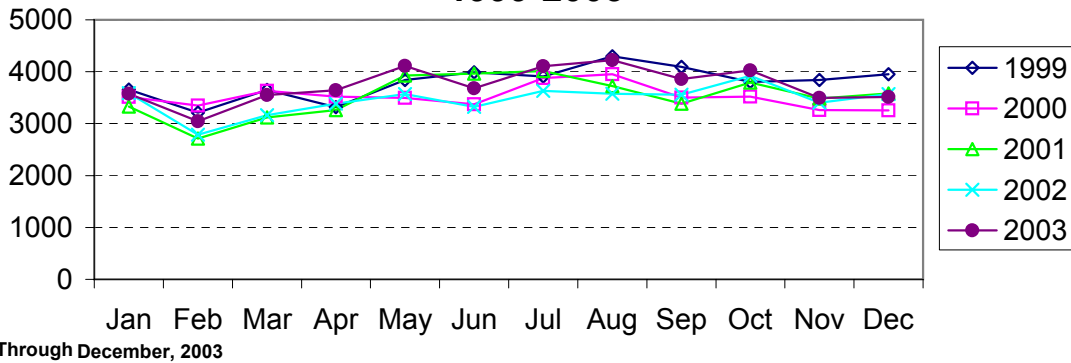
Index Offenses Reported by Month Charlotte-Mecklenburg Police Department: 1999-2003



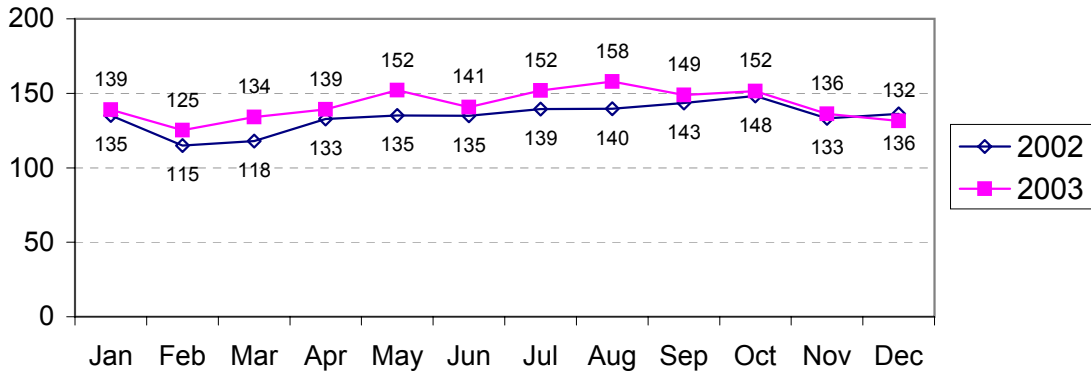
Violent Index Offenses Reported by Month Charlotte-Mecklenburg Police Department: 1999-2003



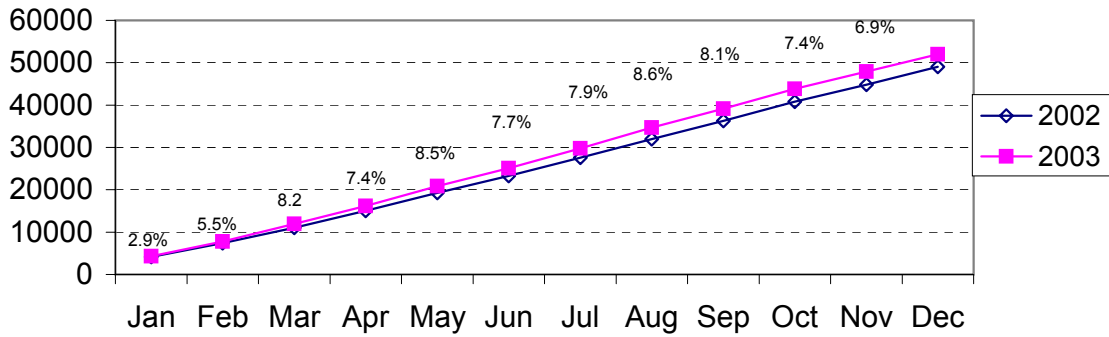
Property Index Offenses Reported by Month Charlotte-Mecklenburg Police Department: 1999-2003



Index Offense Per Day Average by Month Charlotte-Mecklenburg Police Department: 2002-2003

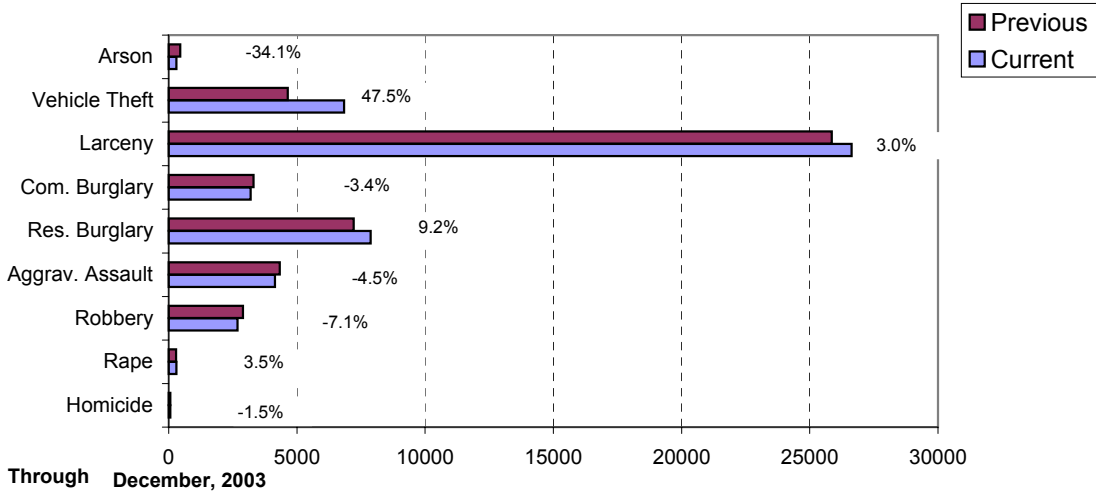


Index Offenses Year-to-Date Cumulative Totals Charlotte-Mecklenburg Police Department: 2002-2003

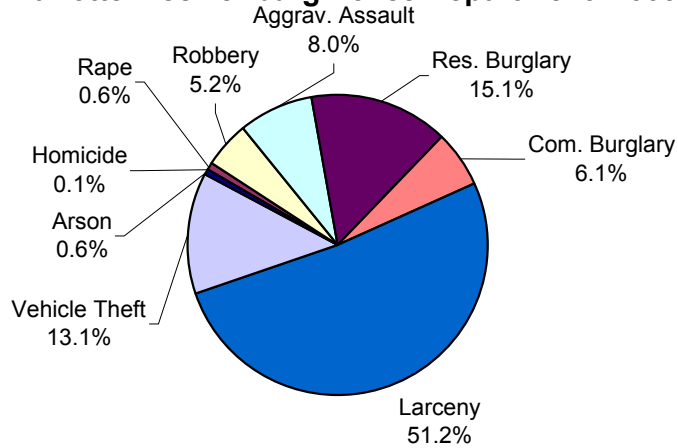


Through December, 2003

**Index Offenses in Current and Previous 12 Months
Charlotte-Mecklenburg Police Department:
2002-2003**

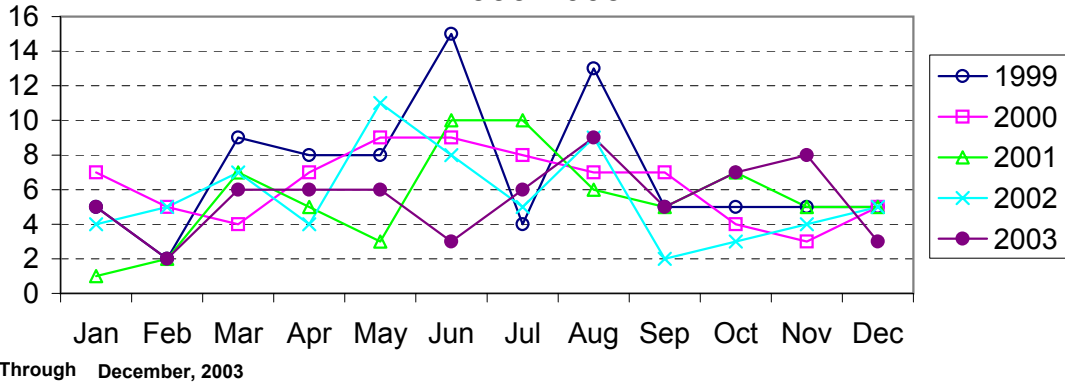


**Year-to-Date Index Offenses by Type
Charlotte-Mecklenburg Police Department: 2003**

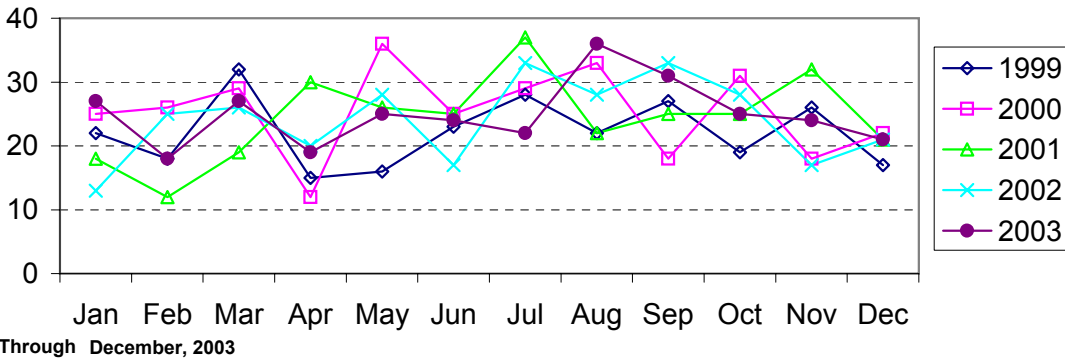


Through December,

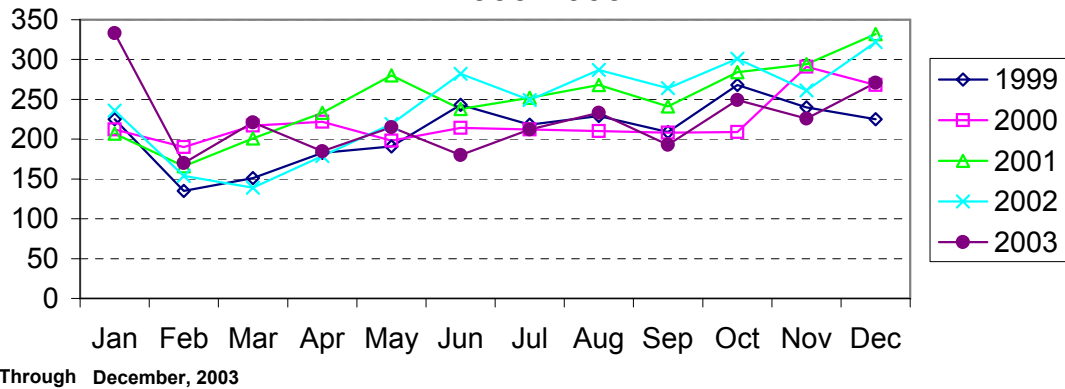
Homicide Reported by Month Charlotte-Mecklenburg Police Department: 1999-2003



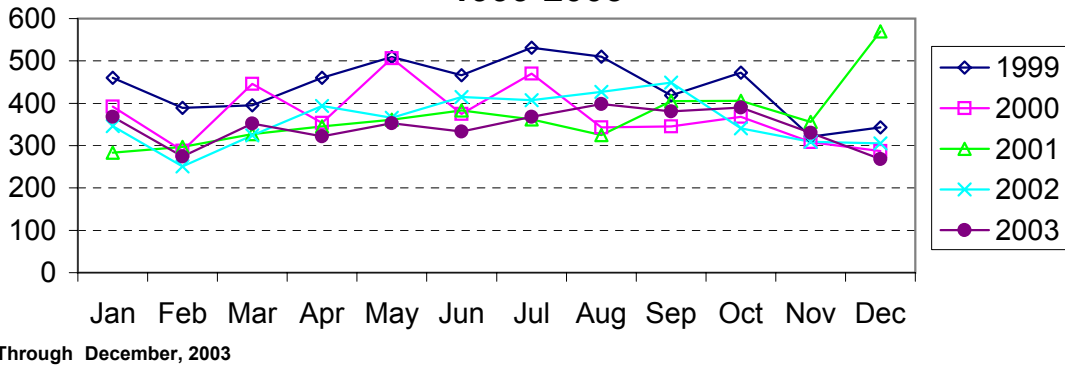
Rape Reported by Month Charlotte-Mecklenburg Police Department: 1999-2003



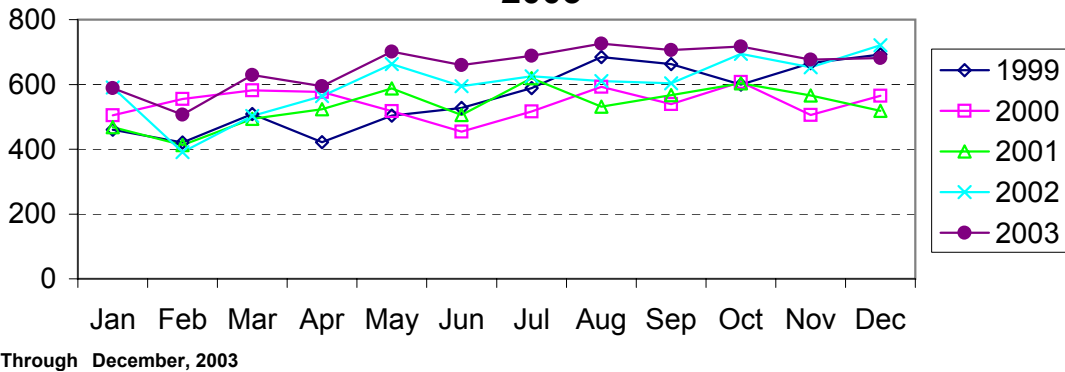
Robbery Reported by Month Charlotte-Mecklenburg Police Department: 1999-2003



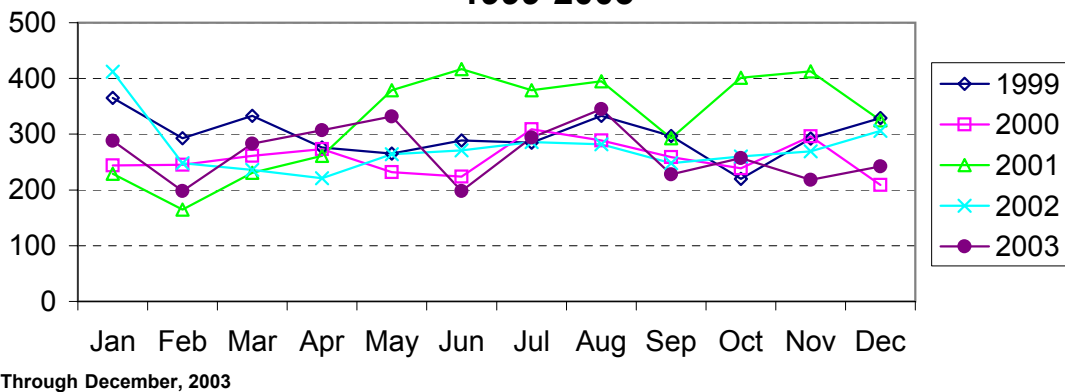
**Aggravated Assault Reported by Month
Charlotte-Mecklenburg Police Department:
1999-2003**



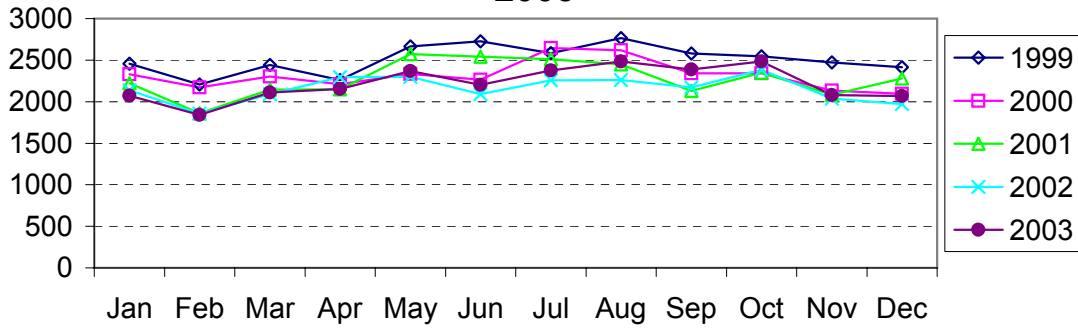
**Residential Burglary Reported by Month
Charlotte-Mecklenburg Police Department: 1999-
2003**



**Commercial Burglary Reported by Month
Charlotte-Mecklenburg Police Department:
1999-2003**

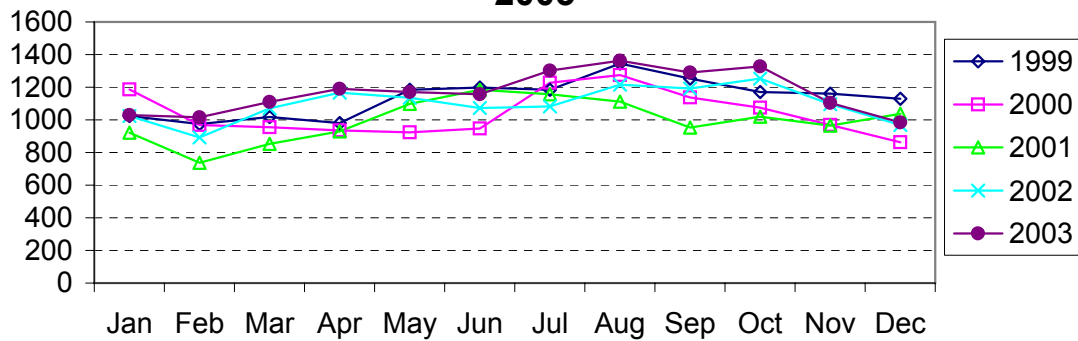


Larceny Reported by Month Charlotte-Mecklenburg Police Department: 1999-2003



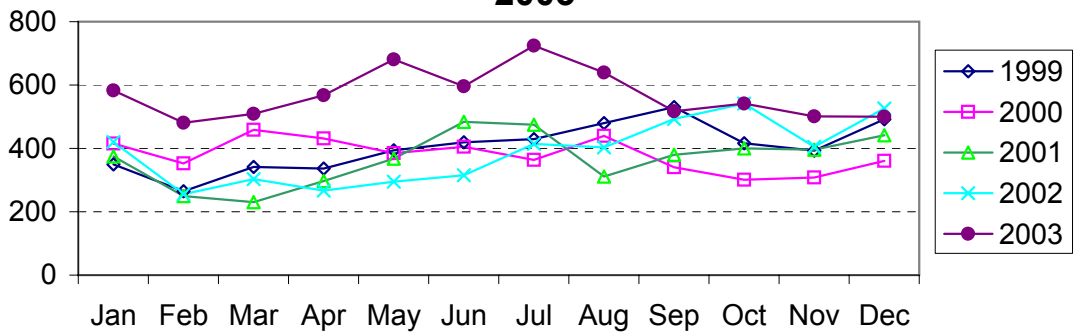
Through December, 2003

Larceny from Vehicle Reported by Month Charlotte-Mecklenburg Police Department: 1999-2003



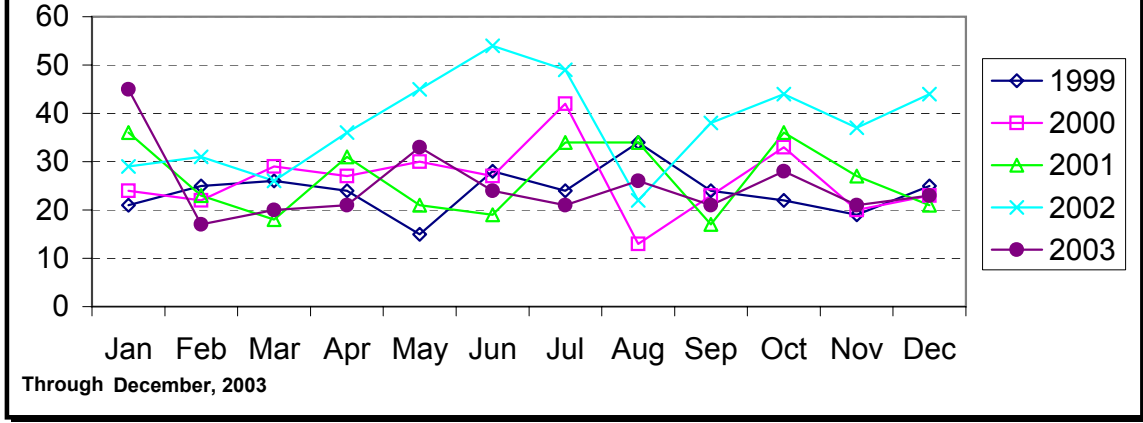
Through December, 2003

Vehicle Theft Reported by Month Charlotte-Mecklenburg Police Department: 1999-2003



Through December, 2003

Arson Reported by Month Charlotte-Mecklenburg Police Department: 1999-2003



Index Offenses Reported by Division and Service Area of Occurrence									
West Service Area: Jan-Dec, 2002-2003									
INDEX_CATEGORIES	Westover (A2)			Freedom (A3)			West Service Area		
	2002	2003	% Change	2002	2003	% Change	2002	2003	% Change
MURDER & NON-NEGLIGENT MANSLAUGHTER	5	7	40.0%	3	9	200.0%	8	16	100.0%
RAPE	27	22	-18.5%	27	43	59.3%	54	65	20.4%
ACTUAL	24	21	-12.5%	23	37	60.9%	47	58	23.4%
ATTEMPTED	3	1	-66.7%	4	6	50.0%	7	7	0.0%
ROBBERY	262	230	-12.2%	305	272	-10.8%	567	502	-11.5%
ARMED	193	176	-8.8%	247	217	-12.1%	440	393	-10.7%
STRONG-ARM	69	54	-21.7%	58	55	-5.2%	127	109	-14.2%
AGGRAVATED ASSAULT	400	408	2.0%	426	508	19.2%	826	916	10.9%
BURGLARY	759	869	14.5%	1302	1397	7.3%	2061	2266	9.9%
RESIDENTIAL	489	613	25.4%	781	967	23.8%	1270	1580	24.4%
COMMERCIAL	270	256	-5.2%	521	430	-17.5%	791	686	-13.3%
LARCENY	1437	1443	0.4%	2216	2397	8.2%	3653	3840	5.1%
FROM AUTO	661	738	11.6%	1105	1153	4.3%	1766	1891	7.1%
BICYCLE	16	8	-50.0%	11	16	45.5%	27	24	-11.1%
SHOPLIFTING	178	144	-19.1%	248	216	-12.9%	426	360	-15.5%
OTHERS	582	553	-5.0%	852	1012	18.8%	1434	1565	9.1%
VEHICLE THEFT	330	449	36.1%	554	802	44.8%	884	1251	41.5%
ARSON	20	22	10.0%	45	36	-20.0%	65	58	-10.8%
TOTALS	3240	3450	6.5%	4878	5464	12.0%	8118	8914	9.8%
VIOLENT PROPERTY	694 2546	667 2783	-3.9% 9.3%	761 4117	832 4632	9.3% 12.5%	1455 6663	1499 7415	3.0% 11.3%

Index Offenses Reported by Division and Service Area of Occurrence									
Southeast Service Area: Jan-Dec, 2002-2003									
INDEX_CATEGORIES	Providence (B1)			Independence (B3)			Southeast Service Area		
	2002	2003	% Change	2002	2003	% Change	2002	2003	% Change
MURDER & NON-NEGLIGENT MANSLAUGHTER	3	0	-100.0%	4	6	50.0%	7	6	-14.3%
RAPE	19	17	-10.5%	25	24	-4.0%	44	41	-6.8%
ACTUAL	18	16	-11.1%	20	21	5.0%	38	37	-2.6%
ATTEMPTED	2	1	-50.0%	5	3	-40.0%	7	4	-42.9%
ROBBERY	145	128	-11.7%	281	212	-24.6%	426	340	-20.2%
ARMED	114	105	-7.9%	228	175	-23.2%	342	280	-18.1%
STRONG-ARM	31	23	-25.8%	53	38	-28.3%	84	61	-27.4%
AGGRAVATED ASSAULT	203	191	-5.9%	316	314	-0.6%	519	505	-2.7%
BURGLARY	783	834	6.5%	1055	992	-6.0%	1838	1826	-0.7%
RESIDENTIAL	531	524	-1.3%	775	755	-2.6%	1306	1279	-2.1%
COMMERCIAL	252	310	23.0%	280	237	-15.4%	532	547	2.8%
LARCENY	1776	1796	1.1%	2767	2768	0.0%	4543	4564	0.5%
FROM AUTO	781	847	8.5%	1590	1639	3.1%	2371	2486	4.9%
BICYCLE	15	15	0.0%	28	40	42.9%	43	55	27.9%
SHOPLIFTING	269	190	-29.4%	312	234	-25.0%	581	424	-27.0%
OTHERS	711	744	4.6%	837	855	2.2%	1548	1599	3.3%
VEHICLE THEFT	225	340	51.1%	430	728	69.3%	655	1068	63.1%
ARSON	20	11	-45.0%	58	33	-43.1%	78	44	-43.6%
TOTALS	3174	3317	4.5%	4936	5077	2.9%	8110	8394	3.5%
VIOLENT PROPERTY	370 2804	336 2981	-9.2% 6.3%	626 4310	556 4521	-11.2% 4.9%	996 7114	892 7502	-10.4% 5.5%

The data in the district breakdowns does not include a small number of offenses in which the location of the offense was unknown or was entered without a valid tract assignment. Districts are not equal in geographic size, demographics, zoning/development, and other factors that influence the rate of crimes committed in an area. Therefore, the comparison of raw offense totals across districts is not advisable.

Index Offenses Reported by Division and Service Area of Occurrence									
Northeast Service Area: Jan-Dec, 2002-2003									
INDEX_CATEGORIES	North (C1)			Hickory Grove (C3)			Northeast Service Area		
	2002	2003	% Change	2002	2003	% Change	2002	2003	% Change
MURDER & NON-NEGLIGENT MANSLAUGHTER	6	5	-16.7%	4	8	100.0%	10	13	30.0%
RAPE	20	30	50.0%	33	33	0.0%	53	63	18.9%
ACTUAL	17	28	64.7%	30	26	-13.3%	47	54	14.9%
ATTEMPTED	3	2	-33.3%	3	7	133.3%	6	9	50.0%
ROBBERY	218	197	-9.6%	281	264	-6.0%	499	461	-7.6%
ARMED	177	159	-10.2%	231	209	-9.5%	408	368	-9.8%
STRONG-ARM	40	38	-5.0%	50	55	10.0%	90	93	3.3%
AGGRAVATED ASSAULT	351	334	-4.8%	402	418	4.0%	753	752	-0.1%
BURGLARY	1089	1295	18.9%	1176	1147	-2.5%	2265	2442	7.8%
RESIDENTIAL	741	933	25.9%	883	870	-1.5%	1624	1803	11.0%
COMMERCIAL	348	362	4.0%	293	277	-5.5%	641	639	-0.3%
LARCENY	3781	3960	4.7%	2121	2306	8.7%	5902	6266	6.2%
FROM AUTO	2075	2279	9.8%	1130	1227	8.6%	3205	3506	9.4%
BICYCLE	14	11	-21.4%	20	29	45.0%	34	40	17.6%
SHOPLIFTING	465	347	-25.4%	199	229	15.1%	664	576	-13.3%
OTHERS	1227	1323	7.8%	772	821	6.3%	1999	2144	7.3%
VEHICLE THEFT	467	778	66.6%	466	821	76.2%	933	1599	71.4%
ARSON	34	36	5.9%	51	36	-29.4%	85	72	-15.3%
TOTALS	5966	6635	11.2%	4534	5033	11.0%	10500	11668	11.1%
VIOLENT	595	566	-4.9%	720	723	0.4%	1315	1289	-2.0%
PROPERTY	5371	6069	13.0%	3814	4310	13.0%	9185	10379	13.0%

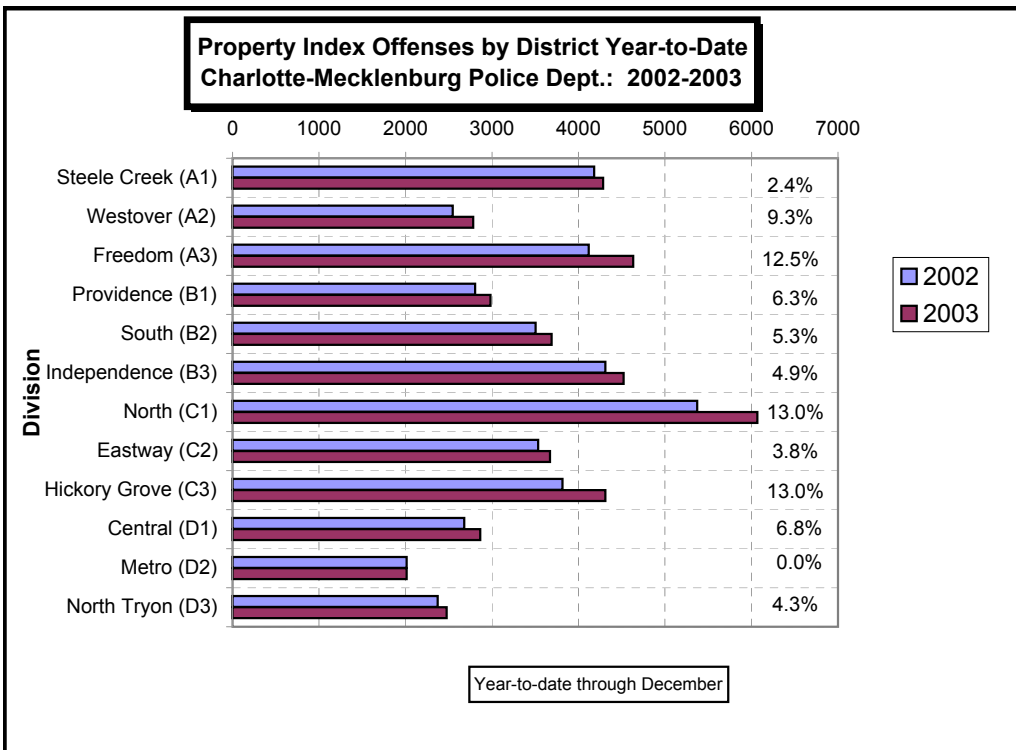
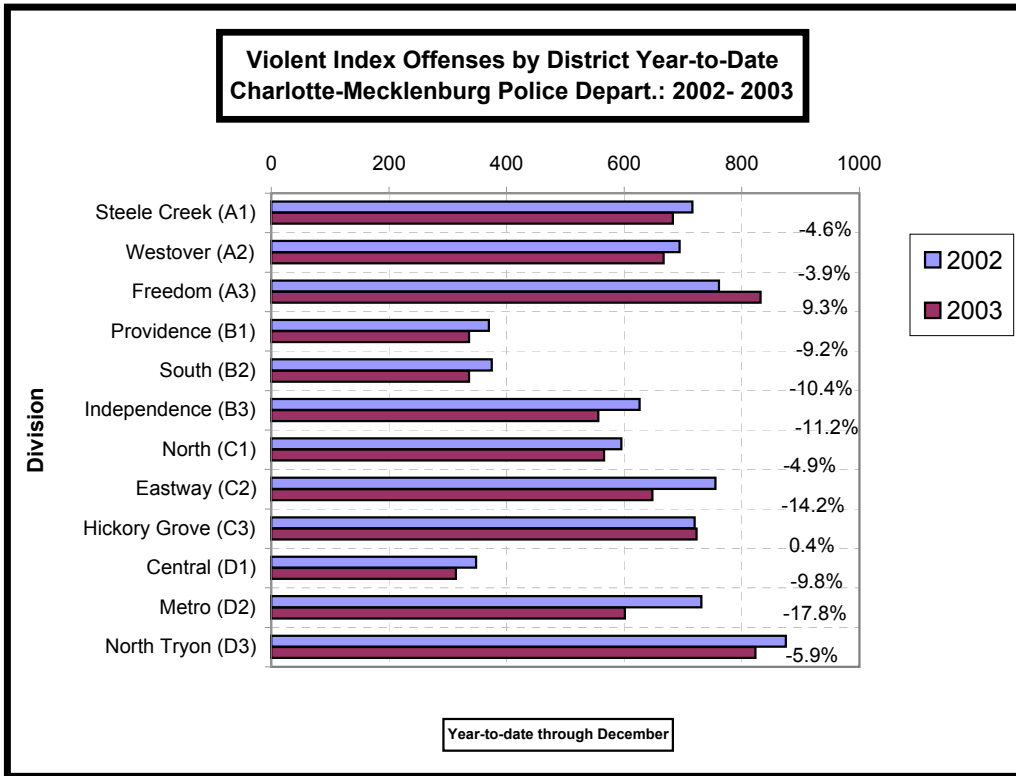
Index Offenses Reported by Division and Service Area of Occurrence									
Central Service Area: Jan-Dec, 2002-2003									
INDEX_CATEGORIES	Central (D1)			Metro (D2)			Central Service Area		
	2002	2003	% Change	2002	2003	% Change	2002	2003	% Change
MURDER & NON-NEGLIGENT MANSLAUGHTER	3	2	-33.3%	14	6	-57.1%	17	8	-52.9%
RAPE	19	16	-15.8%	16	20	25.0%	35	36	2.9%
ACTUAL	18	15	-16.7%	13	17	30.8%	31	32	3.2%
ATTEMPTED	1	1	0.0%	3	3	0.0%	4	4	0.0%
ROBBERY	153	122	-20.3%	212	175	-17.5%	365	297	-18.6%
ARMED	87	74	-14.9%	172	137	-20.3%	259	211	-18.5%
STRONG-ARM	66	48	-27.3%	40	38	-5.0%	106	86	-18.9%
AGGRAVATED ASSAULT	173	174	0.6%	489	400	-18.2%	662	574	-13.3%
BURGLARY	339	389	14.7%	623	533	-14.4%	962	922	-4.2%
RESIDENTIAL	163	213	30.7%	420	400	-4.8%	583	613	5.1%
COMMERCIAL	176	176	0.0%	203	133	-34.5%	379	309	-18.5%
LARCENY	2079	2003	-3.7%	1033	1059	2.5%	3112	3062	-1.6%
FROM AUTO	1096	1166	6.4%	531	597	12.4%	1627	1763	8.4%
BICYCLE	14	10	-28.6%	3	14	366.7%	17	24	41.2%
SHOPLIFTING	75	72	-4.0%	62	47	-24.2%	137	119	-13.1%
OTHERS	894	755	-15.5%	437	401	-8.2%	1331	1156	-13.1%
VEHICLE THEFT	257	457	77.8%	326	400	22.7%	583	857	47.0%
ARSON	5	14	180.0%	30	19	-36.7%	35	33	-5.7%
TOTALS	3028	3177	4.9%	2743	2612	-4.8%	5771	5789	0.3%
VIOLENT	348	314	-9.8%	731	601	-17.8%	1079	915	-15.2%
PROPERTY	2680	2863	6.8%	2012	2011	0.0%	4692	4874	3.9%

The data in the district breakdowns does not include a small number of offenses in which the location of the offense was unknown or was entered without a valid tract assignment. Districts are not equal in geographic size, demographics, zoning/development, and other factors that influence the rate of crimes committed in an area. Therefore, the comparison of raw offense totals across districts is not advisable.

Index Offenses Reported by Division and Service Area of Occurrence									
East Service Area: Jan-Dec, 2002-2003									
INDEX_CATEGORIES	Eastway (C2)			North Tryon (D3)			East Service Area		
	2002	2003	% Change	2002	2003	% Change	2002	2003	% Change
MURDER & NON-NEGLIGENT MANSLAUGHTER	1	4	300.0%	15	8	-46.7%	16	12	-25.0%
RAPE	29	20	-31.0%	23	20	-13.0%	52	40	-23.1%
ACTUAL	25	20	-20.0%	23	20	-13.0%	48	40	-16.7%
ATTEMPTED	4	0	-100.0%	0	0	NA	4	0	-100.0%
ROBBERY	347	330	-4.9%	319	325	1.9%	666	655	-1.7%
ARMED	278	256	-7.9%	259	268	3.5%	537	524	-2.4%
STRONG-ARM	69	74	7.2%	60	57	-5.0%	129	131	1.6%
AGGRAVATED ASSAULT	378	294	-22.2%	518	470	-9.3%	896	764	-14.7%
BURGLARY	998	926	-7.2%	627	772	23.1%	1625	1698	4.5%
RESIDENTIAL	786	686	-12.7%	398	512	28.6%	1184	1198	1.2%
COMMERCIAL	212	240	13.2%	229	260	13.5%	441	500	13.4%
LARCENY	2112	2206	4.5%	1283	1186	-7.6%	3395	3392	-0.1%
FROM AUTO	851	955	12.2%	630	619	-1.7%	1481	1574	6.3%
BICYCLE	8	15	87.5%	13	11	-15.4%	21	26	23.8%
SHOPLIFTING	587	564	-3.9%	122	84	-31.1%	709	648	-8.6%
OTHERS	666	672	0.9%	518	472	-8.9%	1184	1144	-3.4%
VEHICLE THEFT	394	520	32.0%	435	509	17.0%	829	1029	24.1%
ARSON	31	17	-45.2%	28	9	-67.9%	59	26	-55.9%
TOTALS	4290	4317	0.6%	3248	3299	1.6%	7538	7616	1.0%
VIOLENT	755	648	-14.2%	875	823	-5.9%	1630	1471	-9.8%
PROPERTY	3535	3669	3.8%	2373	2476	4.3%	5908	6145	4.0%

Index Offenses Reported by Division and Service Area of Occurrence									
South Service Area: Jan-Dec, 2002-2003									
INDEX_CATEGORIES	Steele Creek (A1)			South (B2)			South Service Area		
	2002	2003	% Change	2002	2003	% Change	2002	2003	% Change
MURDER & NON-NEGLIGENT MANSLAUGHTER	7	8	14.3%	2	3	50.0%	9	11	22.2%
RAPE	34	29	-14.7%	16	21	31.3%	50	50	0.0%
ACTUAL	29	25	-13.8%	14	17	21.4%	43	42	-2.3%
ATTEMPTED	5	4	-20.0%	2	4	100.0%	7	8	14.3%
ROBBERY	229	269	17.5%	140	133	-5.0%	369	402	8.9%
ARMED	186	211	13.4%	105	101	-3.8%	291	312	7.2%
STRONG-ARM	43	48	11.6%	35	32	-8.6%	78	80	2.6%
AGGRAVATED ASSAULT	446	377	-15.5%	217	179	-17.5%	663	556	-16.1%
BURGLARY	830	881	6.1%	870	914	5.1%	1700	1795	5.6%
RESIDENTIAL	527	613	16.3%	679	720	6.0%	1206	1333	10.5%
COMMERCIAL	303	268	-11.6%	191	194	1.6%	494	462	-6.5%
LARCENY	2853	2799	-1.9%	2306	2382	3.3%	5159	5181	0.4%
FROM AUTO	1425	1336	-6.2%	1253	1317	5.1%	2678	2653	-0.9%
BICYCLE	13	19	46.2%	18	17	-5.6%	31	36	16.1%
SHOPLIFTING	467	455	-2.6%	193	170	-11.9%	660	625	-5.3%
OTHERS	948	989	4.3%	842	878	4.3%	1790	1867	4.3%
VEHICLE THEFT	463	569	22.9%	278	370	33.1%	741	939	26.7%
ARSON	36	34	-5.6%	49	24	-51.0%	85	58	-31.8%
TOTALS	4898	4966	1.4%	3878	4026	3.8%	8776	8992	2.5%
VIOLENT	716	683	-4.6%	375	336	-10.4%	1091	1019	-6.6%
PROPERTY	4182	4283	2.4%	3503	3690	5.3%	7685	7973	3.7%

The data in the district breakdowns does not include a small number of offenses in which the location of the offense was unknown or was entered without a valid tract assignment. Districts are not equal in geographic size, demographics, zoning/development, and other factors that influence the rate of crimes committed in an area. Therefore, the comparison of raw offense totals across districts is not advisable.



The data in the district breakdowns does not include a small number of offenses in which the location of the offense was unknown or was entered without a valid tract assignment. Districts are not equal in geographic size, demographics, zoning/development, and other factors that influence the rate of crimes committed in an area. Therefore, the comparison of raw offense totals across districts is not advisable.

Arrests by Charlotte-Mecklenburg Police Department
Year-To-Date: 2002-2003
(Through December)

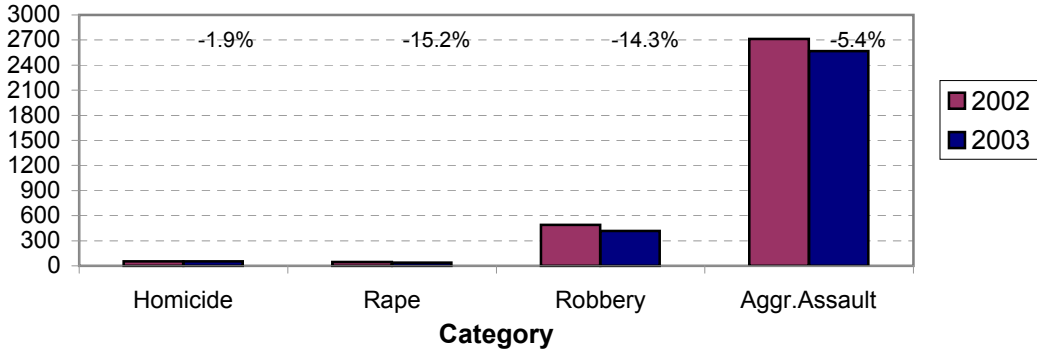
CATEGORY	ADULTS (AGE 18 & OLDER):			JUVENILES (UNDER 18):			TOTAL ARRESTS:		
	2002 Y-T-D	2003 Y-T-D	% CHANGE	2002 Y-T-D	2003 Y-T-D	% CHANGE	2002 Y-T-D	2003 Y-T-D	% CHANGE
Murder/Non-Negligent Manslaughter	50	45	-10.0%	3	7	133.3%	53	52	-1.9%
Negligent & Vehicular Manslaughter	5	1	-80.0%	0	0	NA	5	1	-80.0%
Rape	42	33	-21.4%	4	6	50.0%	46	39	-15.2%
Robbery	351	299	-14.8%	138	120	-13.0%	489	419	-14.3%
Aggravated Assault	2393	2198	-8.1%	321	370	15.3%	2714	2568	-5.4%
Burglary	483	492	1.9%	263	226	-14.1%	746	718	-3.8%
Larceny	1582	1510	-4.6%	639	648	1.4%	2221	2158	-2.8%
Vehicle Theft	121	147	21.5%	175	365	108.6%	296	512	73.0%
Non-Aggravated Assault	1741	1718	-1.3%	766	914	19.3%	2507	2632	5.0%
Arson	22	21	-4.5%	44	30	-31.8%	66	51	-22.7%
Forgery/Counterfiet	136	132	-2.9%	1	4	300.0%	137	136	-0.7%
Fraud	667	575	-13.8%	10	8	-20.0%	677	583	-13.9%
Embezzlement	123	110	-10.6%	14	4	-71.4%	137	114	-16.8%
Stolen Property	511	524	2.5%	127	151	18.9%	638	675	5.8%
Vandalism	239	239	0.0%	177	204	15.3%	416	443	6.5%
Weapons	481	482	0.2%	69	72	4.3%	550	554	0.7%
Prostitution	252	339	34.5%	5	3	-40.0%	257	342	33.1%
Sex Offenses	275	224	-18.5%	44	41	-6.8%	319	265	-16.9%
Drugs	2950	3054	3.5%	289	297	2.8%	3239	3351	3.5%
Gambling	3	26	766.7%	0	0	NA	3	26	766.7%
Offenses vs. Family	26	11	-57.7%	0	0	NA	26	11	-57.7%
DUI	2336	2115	-9.5%	17	10	-41.2%	2353	2125	-9.7%
Liquor	262	185	-29.4%	13	14	7.7%	275	199	-27.6%
Disorder.Conduct	536	585	9.1%	187	301	61.0%	723	886	22.5%
Other Non-Traffic	7107	7572	6.5%	708	798	12.7%	7815	8370	7.1%
VIOLENT INDEX¹	2836	2575	-9.2%	466	503	7.9%	3302	3078	-6.8%
PROPERTY INDEX²	2208	2170	-1.7%	1121	1269	13.2%	3329	3439	3.3%
INDEX SUBTOTAL	5044	4745	-5.9%	1587	1772	11.7%	6631	6517	-1.7%
PART 2 SUBTOTAL³	17650	17892	1.4%	2427	2821	16.2%	20077	20713	3.2%
TOTAL	22694	22637	-0.3%	4014	4593	14.4%	26708	27230	2.0%

¹Violent Index includes murder and non-negligent manslaughter, rape, robbery, and aggravated assault.

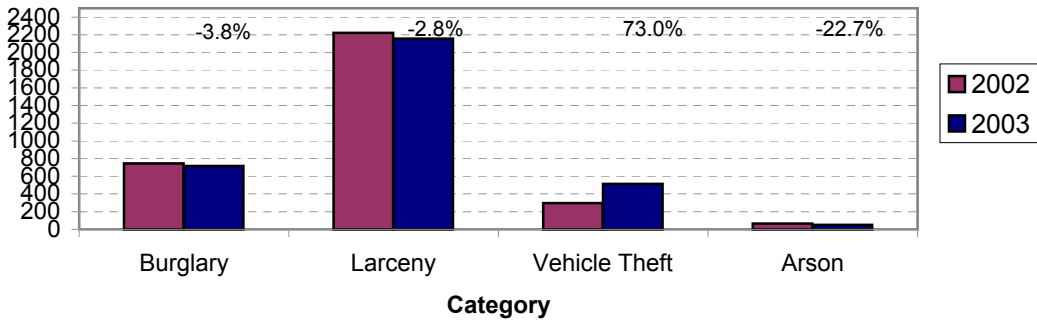
²Property Index includes burglary, larceny, vehicle theft, and arson.

³Part 2 crimes include non-traffic crimes not counted in the Index totals.

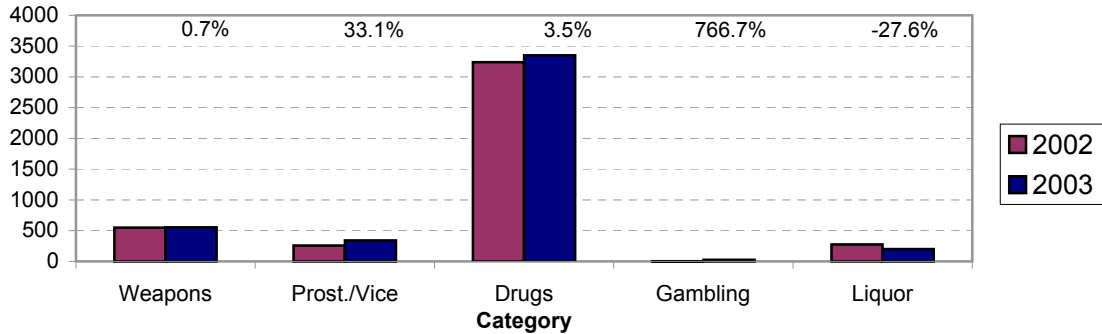
**Violent Index Arrests Year-to-Date
Charlotte-Mecklenburg Police Department: 2002-2003
(Through December)**



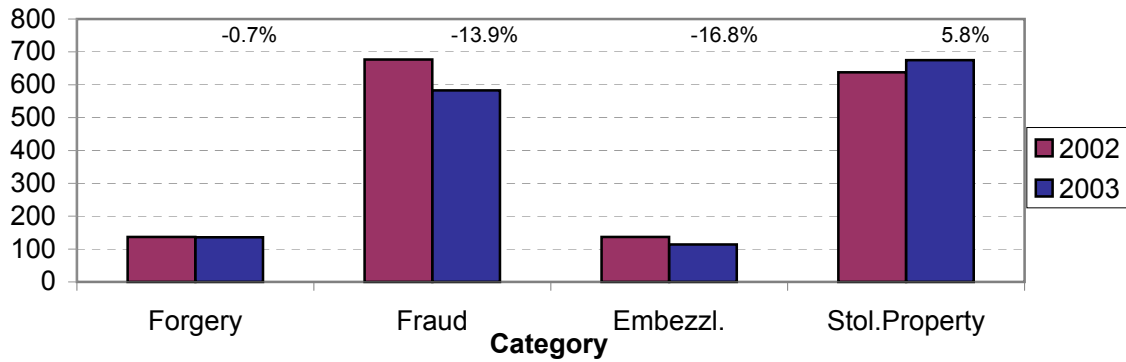
**Property Index Arrests Year-to-Date
Charlotte-Mecklenburg Police Department: 2002-2003
(Through December)**



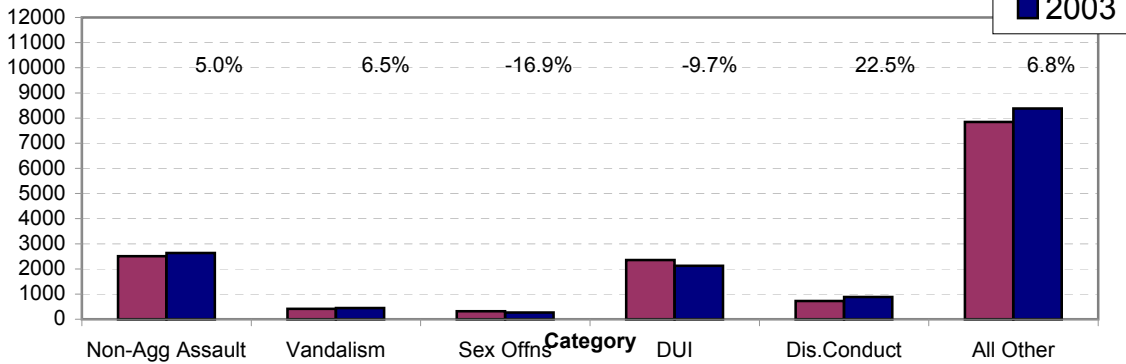
**Arrests for Vice/CCW/Drugs/Etc. Year-to-Date
Charlotte-Mecklenburg Police Department: 2002 - 2003
(Through December)**



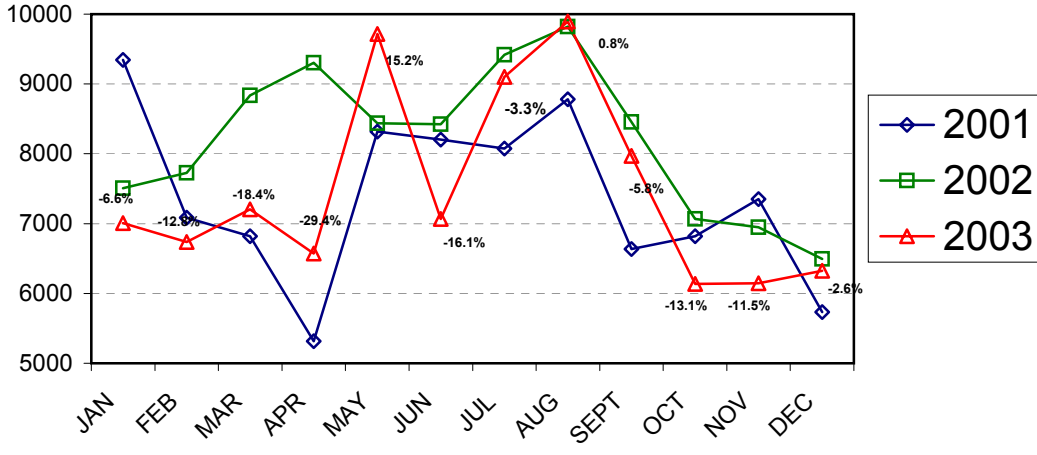
**Arrests for Property/White Collar Crime Year-to-Date
Charlotte-Mecklenburg Police Department: 2002 - 2003
(Through December)**



**Arrests for Other Categories Year-to-Date
Charlotte-Mecklenburg Police Department: 2002 - 2003
(Through December)**



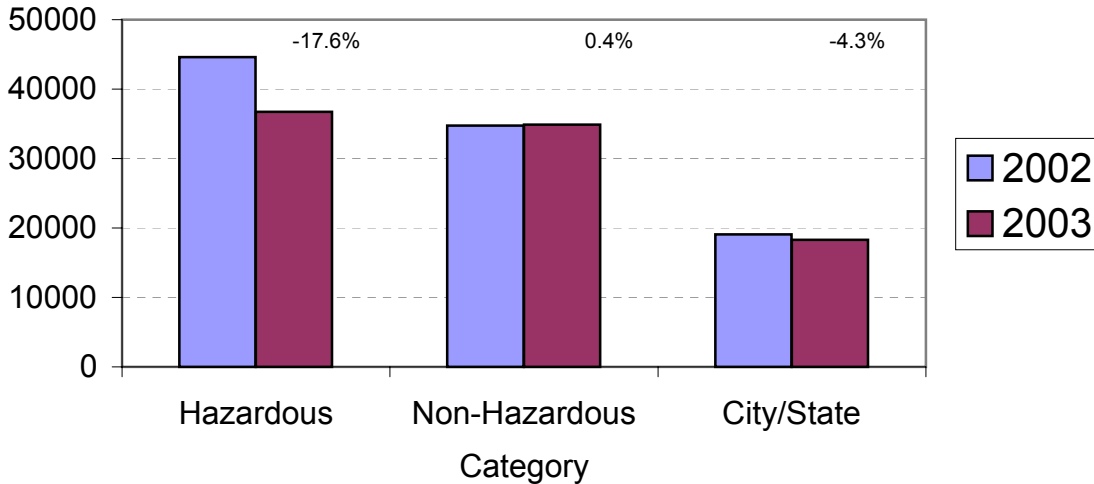
**Total Citation Enforcement by Month
Charlotte-Mecklenburg Police Dept.: 2001-2003**



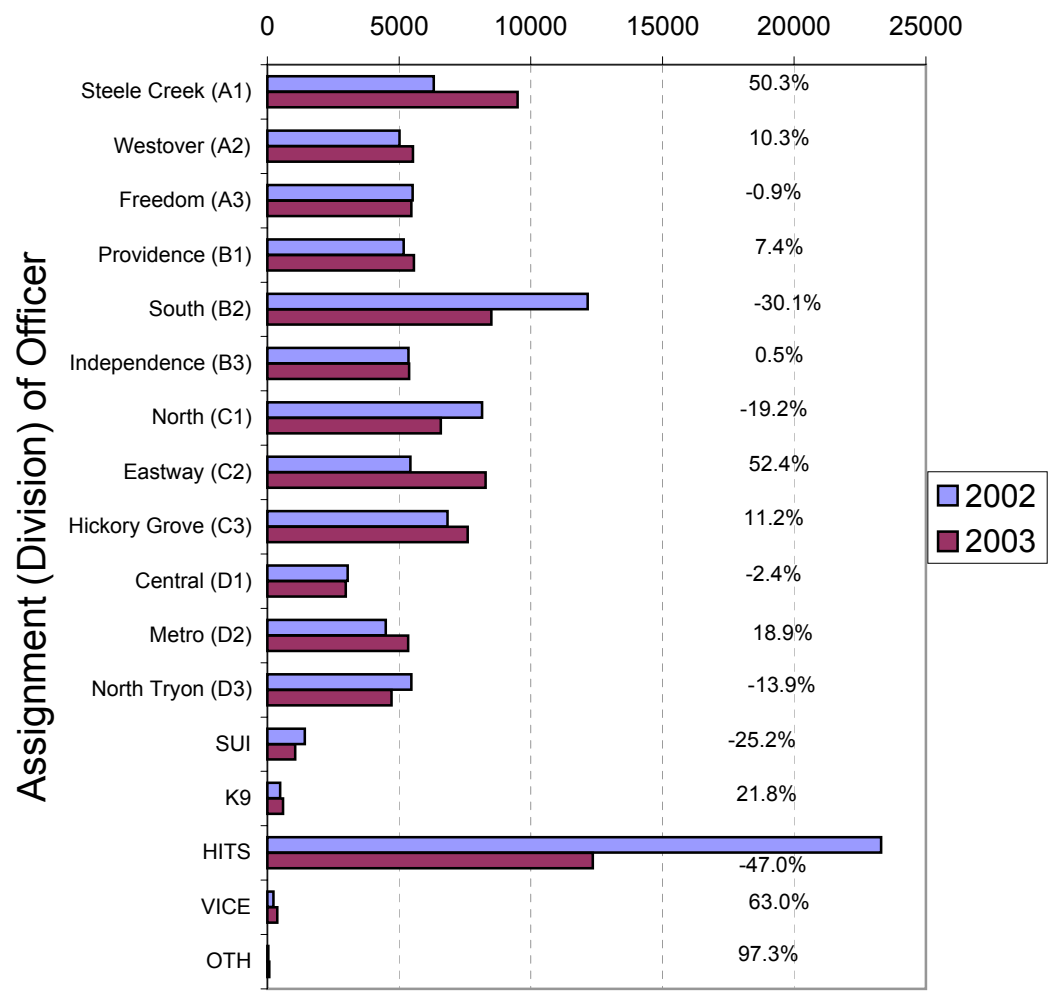
(Through December, 2003)

(Includes Hazardous, Non-Hazardous, and City/State Citations)

**CMPD Citation Enforcement by Category
Year-to-Date, 2002 - 2003
(Through December, 2003)**



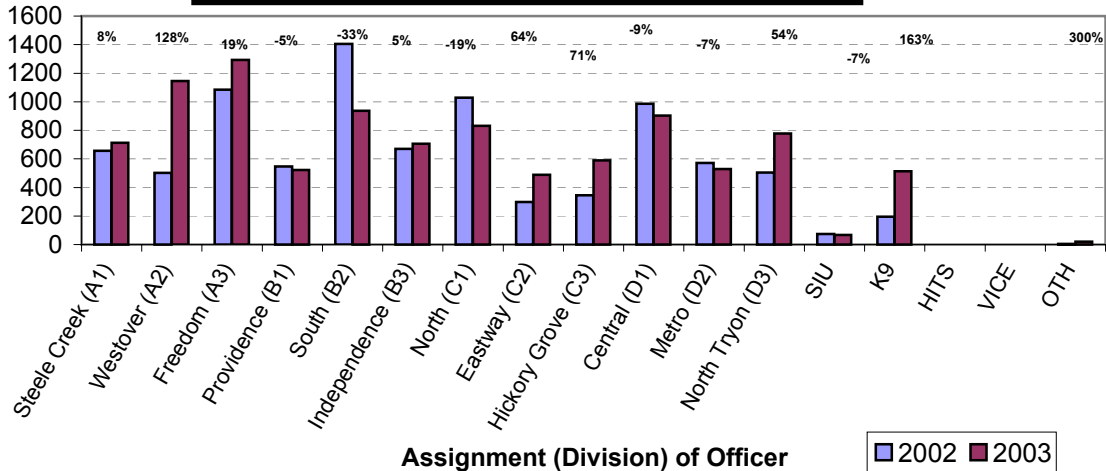
**Citations Issued Year-to-Date by CMPD Divisions
2002 - 2003
(Through December, 2003)**



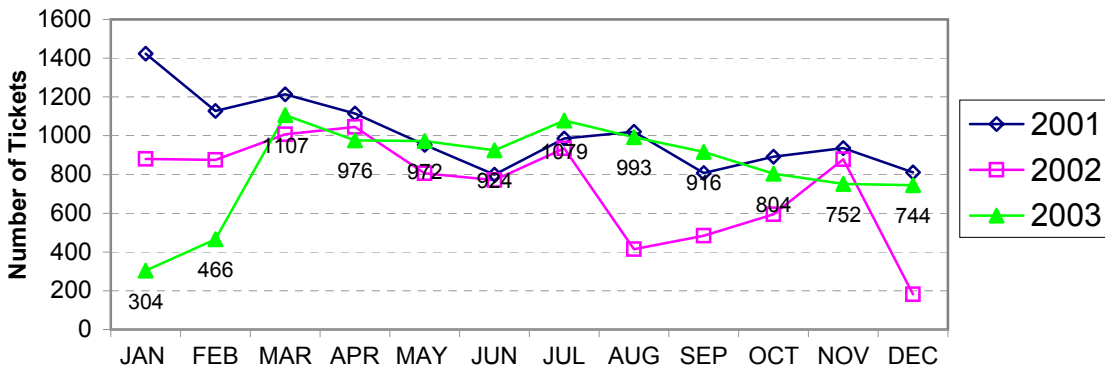
**Citations Issued by the Charlotte Mecklenburg Police Dept. Year-to-Date
(Through December, 2003)**

Total Citations	2002	2003	% Change
Hazardous	44,589	36,725	-17.6%
Non-Hazardous	34,756	34,878	0.4%
Other City/State Statute/Ordinance	19,091	18,279	-4.3%
Total	98,436	89,882	-8.7%

**Warning Tickets Issued by CMPD Division
Year-to-Date, 2002 - 2003
Through December,**



**Total Warning Tickets Issued by CMPD
By Month: 2001 - 2003**



**Warning Tickets Issued by CMPD Year-to-Date
Through December, 2003**

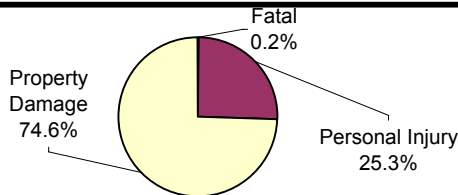
	2002	2003	% Change
Total Warning Tickets	8871	10037	13.1%

**Traffic Collison Reports
Charlotte-Mecklenburg Police Department
Year-to-Date: 2002-2003
(Through December)**

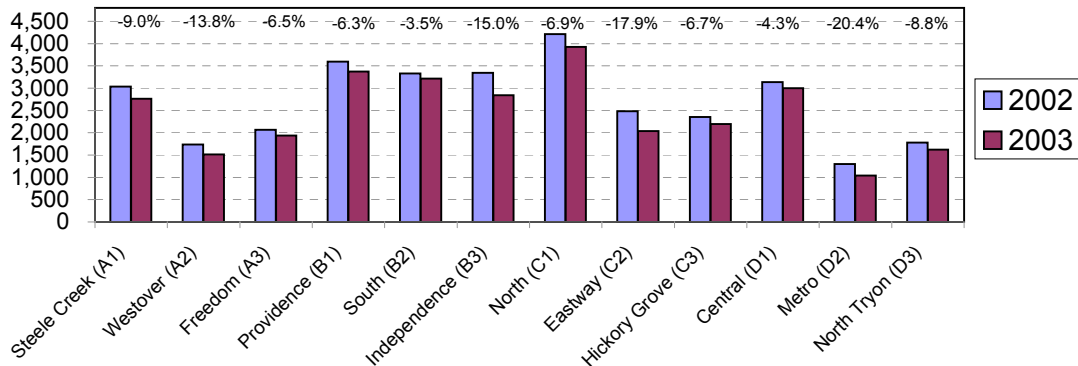
<u>Type</u>	<u>2002</u>	<u>2003</u>	<u>% Change</u>
Fatal Collisions	63	54	-14.3%
Vehicle Occupants Killed	48	50	4.2%
Pedestrians Killed	16	8	-50.0%
Personal Injury Collisions	7831	7438	-5.1%
Property Damage Collisions	24533	22114	-9.9%
Total Collisions	32427	29606	-8.7%

* The number of fatal collisions and the number of persons killed in those incidents is taken from the HITS file. Their records are updated for deaths that occur after the initial report is filed.

**Traffic Collisions Reported by Type
Charlotte-Mecklenburg Police Department:
2003 Year-to-Date
(Through December)**



**Traffic Collisions Reported by Charlotte-Mecklenburg Police Dept.
Year-to-Date By Location (Division) : 2002 -2003
(Through December)**



Uniform Crime Reporting Procedures:

The Charlotte-Mecklenburg Police Department reports offense and arrest statistics in accordance with standard Uniform Crime Reporting (UCR) guidelines. UCR policy states that any adjustments to previous months can be made on the current month's report:

...In tabulating crime counts, an agency may find that offense totals for past months require adjustments due to developments in the investigation or other handling of the matter. It may be necessary to adjust totals reported to UCR for the past month or prior months. Needed adjustments can be made on the current month's report and do not affect the reliability of the figures in that such adjustments tend to equalize each other from month to month over a period of time.

- *Uniform Crime Reporting Handbook*, FBI, 1984, p. 42-43

We are required to report crime monthly to the UCR program, and we do therefore make an effort to process monthly changes in a timely manner. However, occasionally due to the review and processing required for reclassifying, unfounding or clearing cases, the current month's totals may reflect the processing of a backlog of these changes from previous months.

Users of the data are cautioned that conclusions about substantial changes in crime trends or in clearance rates based on only a single month's data or trend may reflect some of these adjustments. For this reason, in addition to the monthly and year-to-date trends on Page 1, the monthly report routinely includes a comparison for the previous 12 months (p. 4), as well as graphs that provide seasonal/monthly comparisons over a five-year period (p. 5-8).

We do make an effort to present the most accurate information available at the time this report is published. However, errors in compiling the data and charts do sometimes occur, so please notify the Research, Planning, and Analysis office if you have any questions about the data in this report.

The new division names are used in this report. For ease of use, they also include the old district designations in parentheses.

V. L. Sorban
Research, Planning & Analysis Bureau