



**CHARLOTTE-MECKLENBURG POLICE DEPARTMENT
MONTHLY SUMMARY REPORT
NOVEMBER, 2003**

**Darrel Stephens
Chief of Police**

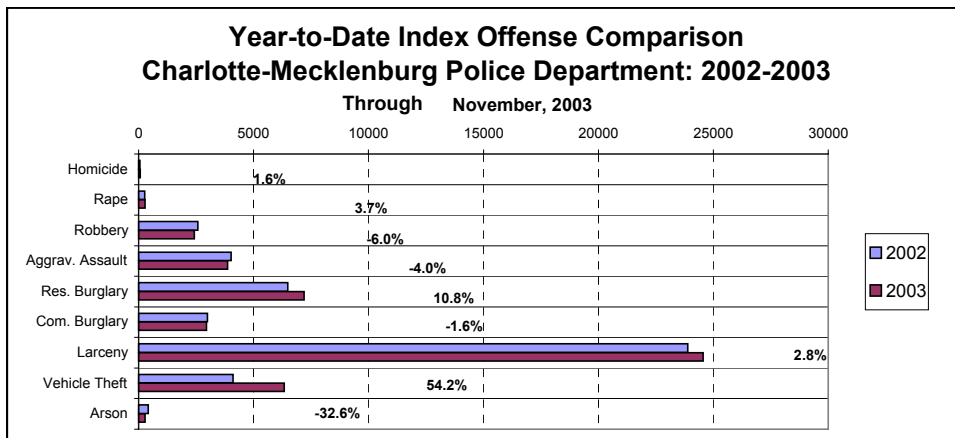
INDEX OFFENSES REPORTED TO CHARLOTTE-MECKLENBURG POLICE DEPARTMENT

November, 2003 INDEX OFFENSES	# THIS MONTH	% OF ALL INDEX	# LAST MONTH	MONTHLY % CHANGE	SAME MONTH LAST YEAR	MONTHLY % CHANGE	THIS YEAR TO DATE	LAST YEAR TO DATE	ANNUAL % CHANGE
HOMICIDE (MURDER & NON- NEGLIGENT MANSLAUGHTER)	8	0.2%	7	14.3%	4	100.0%	63	62	1.6%
RAPE TOTAL	24	0.6%	25	-4.0%	17	41.2%	278	268	3.7%
ACTUAL	24	0.6%	20	20.0%	14	71.4%	244	235	3.8%
ATTEMPT	0	0.0%	5	-100.0%	3	-100.0%	34	33	3.0%
ROBBERY TOTAL	226	5.5%	249	-9.2%	261	-13.4%	2417	2571	-6.0%
ARMED	176	4.3%	200	-12.0%	216	-18.5%	1896	2007	-5.5%
STRONG-ARM	50	1.2%	49	2.0%	45	11.1%	521	564	-7.6%
AGGRAVATED ASSAULT TOTAL	330	8.1%	390	-15.4%	309	6.8%	3869	4029	-4.0%
BURGLARY TOTAL	895	21.9%	974	-8.1%	922	-2.9%	10143	9489	6.9%
RESIDENTIAL	677	16.6%	717	-5.6%	653	3.7%	7195	6492	10.8%
COMMERCIAL	218	5.3%	257	-15.2%	269	-19.0%	2948	2997	-1.6%

FORCE	722	17.7%	753	-4.1%	728	-0.8%	8010	7359	8.8%
NO FORCE	133	3.3%	164	-18.9%	120	10.8%	1514	1464	3.4%
ATTEMPT	40	1.0%	57	-29.8%	74	-45.9%	609	666	-8.6%
LARCENY TOTAL	2079	50.9%	2484	-16.3%	2038	2.0%	24559	23889	2.8%
\$200 AND OVER	1046	25.6%	1217	-14.1%	1002	4.4%	12258	11542	6.2%
\$50 TO \$200	352	8.6%	455	-22.6%	366	-3.8%	4368	4500	-2.9%
UNDER \$50	681	16.7%	812	-16.1%	670	1.6%	7933	7847	1.1%

FROM AUTO	1104	27.0%	1328	-16.9%	1097	0.6%	13059	12202	7.0%
BICYCLE	11	0.3%	10	10.0%	13	-15.4%	196	168	16.7%
SHOPLIFTING	264	6.5%	276	-4.3%	228	15.8%	2522	2928	-13.9%
OTHERS	700	17.1%	870	-19.5%	700	0.0%	8782	8591	2.2%
VEHICLE THEFT TOTAL	501	12.3%	541	-7.4%	405	23.7%	6340	4112	54.2%
ARSON TOTAL	21	0.5%	28	-25.0%	37	-43.2%	277	411	-32.6%
TOTALS	4084	100.0%	4698	-13.1%	3993	2.3%	47946	44831	6.9%
VIOLENT PROPERTY	588 3496	14.4% 85.6%	671 4027	-12.4% -13.2%	591 3402	-0.5% 2.8%	6627 41319	6930 37901	-4.4% 9.0%

NOTE: These totals include offenses reported to the Charlotte-Mecklenburg Police Department in accordance with the Uniform Crime Reporting Program. Totals for homicide do not include cases investigated by the police but classed by UCR guidelines as negligent manslaughter or as "justifiable homicide."

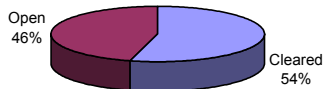


INDEX CLEARANCES REPORTED BY THE CHARLOTTE-MECKLENBURG POLICE DEPARTMENT

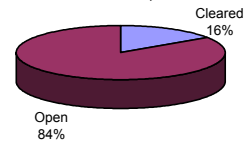
November, 2003 INDEX CLEARANCES	THIS MONTH:		LAST MONTH:		SAME MO. LAST YR:		THIS YEAR TO DATE:		LAST YEAR TO DATE:	
	NO.	%	NO.	%	NO.	%	NO.	%	NO.	%
MURDER & NON-NEGLIGENT MANSLAUGHTER	4	50.0%	1	14.3%	3	75.0%	33	52.4%	38	61.3%
RAPE TOTAL	37	154.2%	4	16.0%	24	141.2%	208	74.8%	125	46.6%
ACTUAL	36	150.0%	3	15.0%	23	164.3%	186	76.2%	110	46.8%
ATTEMPT	1	#DIV/0!	1	20.0%	1	33.3%	22	64.7%	15	45.5%
ROBBERY TOTAL	123	54.4%	20	8.0%	55	21.1%	573	23.7%	555	21.6%
ARMED	73	41.5%	12	6.0%	25	11.6%	379	20.0%	392	19.5%
STRONG-ARM	50	100.0%	8	16.3%	30	66.7%	194	37.2%	163	28.9%
AGGRAVATED ASSAULT TOTAL	848	257.0%	140	35.9%	325	105.2%	2779	71.8%	2069	51.4%
BURGLARY TOTAL	213	23.8%	40	4.1%	114	12.4%	1320	13.0%	884	9.3%
RESIDENTIAL	157	23.2%	33	4.6%	93	14.2%	902	12.5%	694	10.7%
COMMERCIAL	56	25.7%	7	2.7%	21	7.8%	418	14.2%	190	6.3%
LARCENY TOTAL	811	39.0%	197	7.9%	431	21.1%	3726	15.2%	2781	11.6%
FROM AUTO	14	1.3%	23	1.7%	71	6.5%	405	3.1%	339	2.8%
BICYCLE	5	45.5%	1	10.0%	2	15.4%	23	11.7%	16	9.5%
SHOPLIFTING	244	92.4%	131	47.5%	122	53.5%	1527	60.5%	1523	52.0%
OTHERS	422	60.3%	42	4.8%	236	33.7%	1645	18.7%	903	10.5%
VEHICLE THEFT TOTAL	191	38.1%	115	21.3%	46	11.4%	1359	21.4%	748	18.2%
ARSON TOTAL	5	23.8%	2	7.1%	9	24.3%	69	24.9%	88	21.4%
TOTALS	2232	54.7%	519	11.0%	1007	25.2%	10067	21.0%	7288	16.3%
VIOLENT PROPERTY	1012 1220	172.1% 34.9%	165 354	24.6% 8.8%	407 600	68.9% 17.6%	3593 6474	54.2% 15.7%	2787 4501	40.2% 11.9%

NOTE: Clearances are reported in accordance with Uniform Crime Report guidelines. Since clearances are not counted until they are entered into the Records system, any delays in processing may result in some clearances being reported in succeeding months.

**Year-to-Date Violent Index Clearance Rate
Charlotte-Mecklenburg Police Department: 2003
November, 2003**

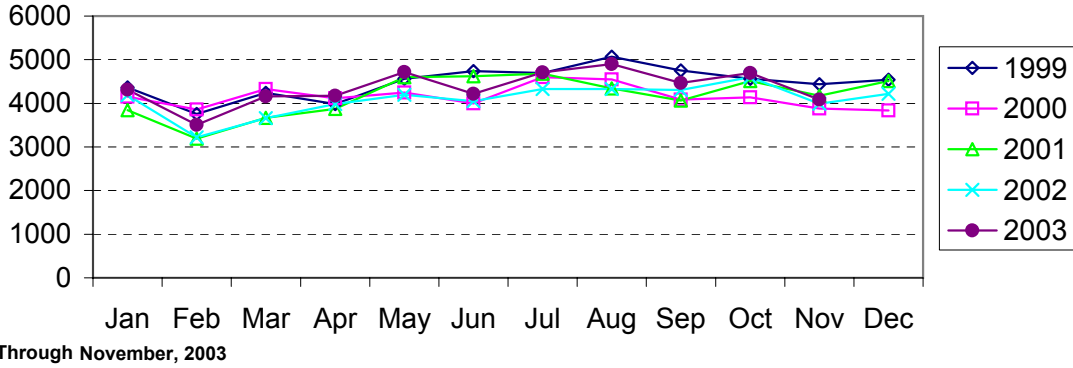


**Year-to-Date Property Index Clearance Rate
Charlotte-Mecklenburg Police Department: 2003
November, 2003**

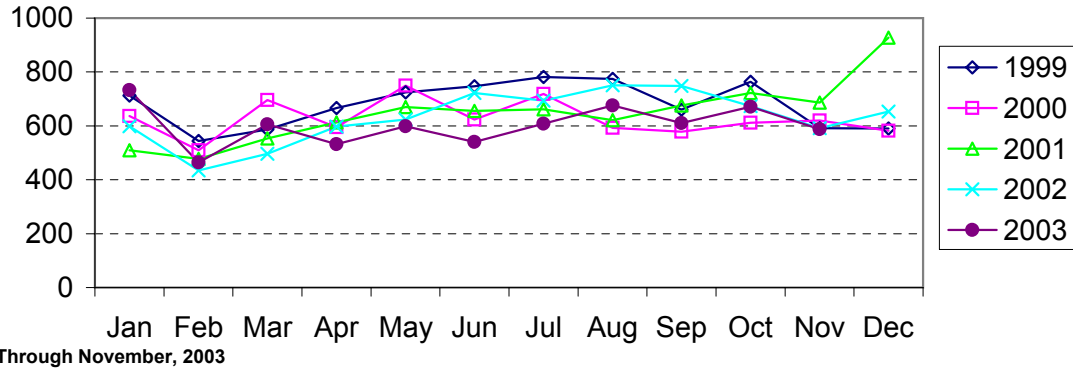


Clearance rates for crime reporting are calculated by dividing the number of crimes cleared during a designated time span by the number of crimes reported in the same period and converting the result to a percentage (multiplying by 100). Since cases from previous reporting periods can be cleared during the designated time span, the rate may be higher than 100%.

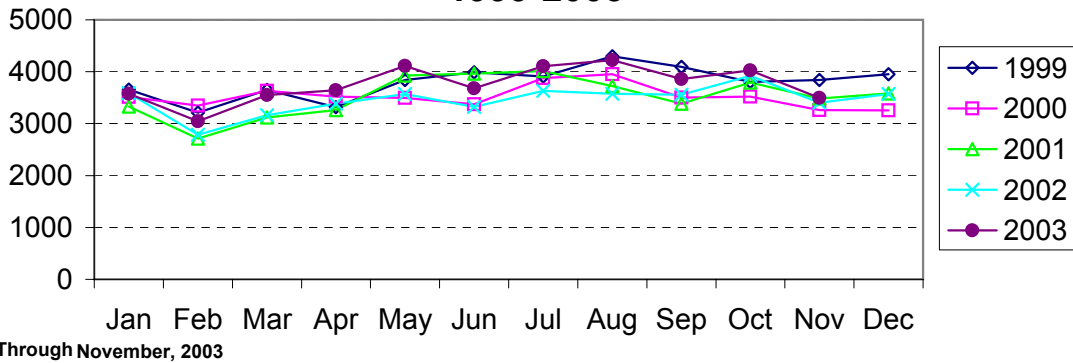
Index Offenses Reported by Month Charlotte-Mecklenburg Police Department: 1999-2003



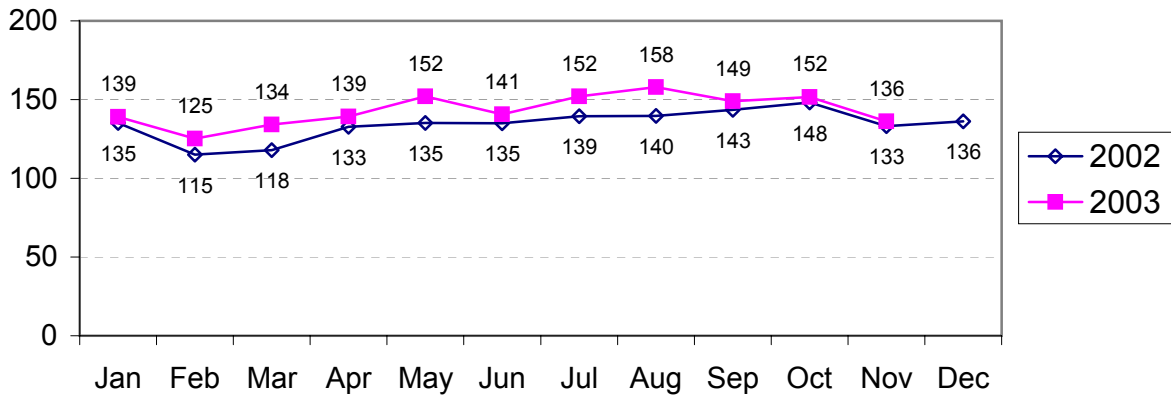
Violent Index Offenses Reported by Month Charlotte-Mecklenburg Police Department: 1999-2003



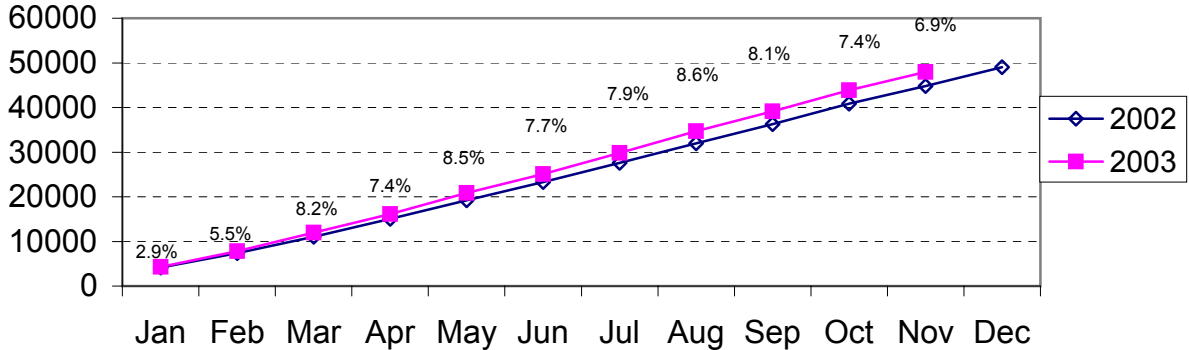
Property Index Offenses Reported by Month Charlotte-Mecklenburg Police Department: 1999-2003



Index Offense Per Day Average by Month Charlotte-Mecklenburg Police Department: 2002-2003

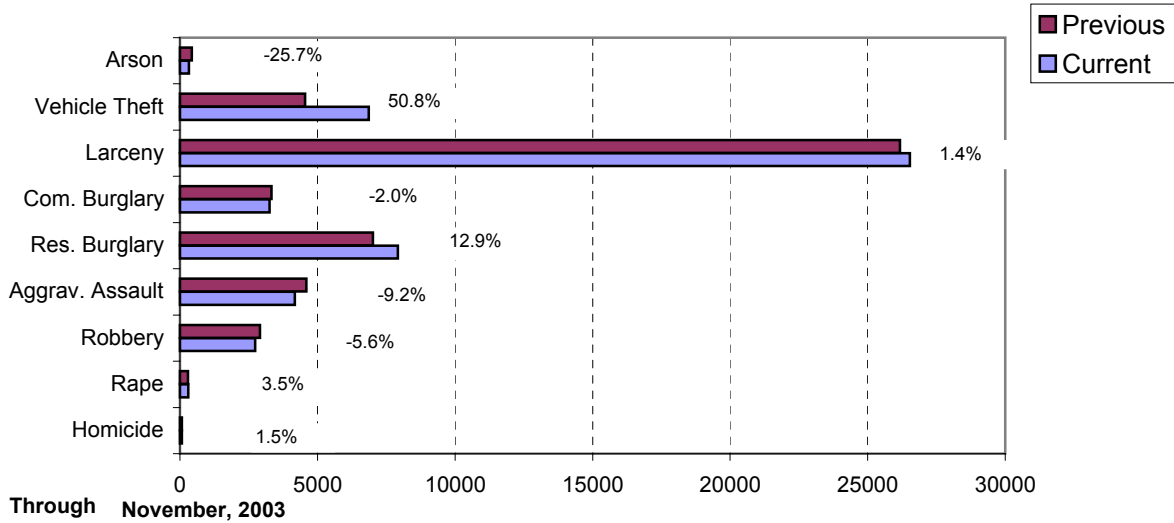


Index Offenses Year-to-Date Cumulative Totals Charlotte-Mecklenburg Police Department: 2002-2003

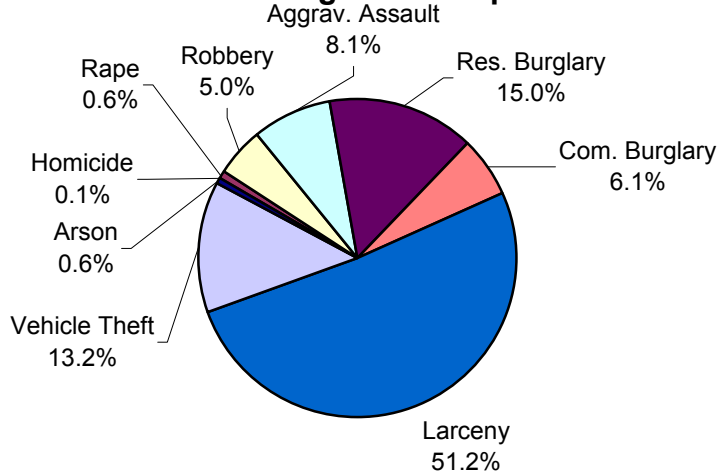


Through November, 2003

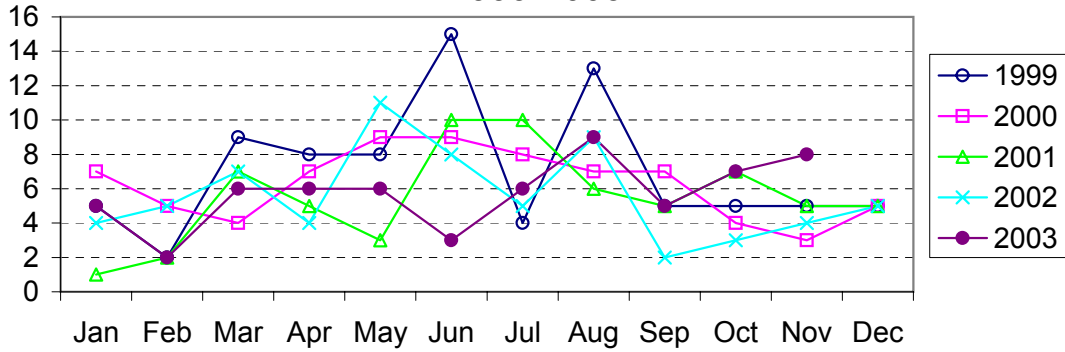
Index Offenses in Current and Previous 12 Months Charlotte-Mecklenburg Police Department: 2002-2003



Year-to-Date Index Offenses by Type Charlotte-Mecklenburg Police Department: 2003

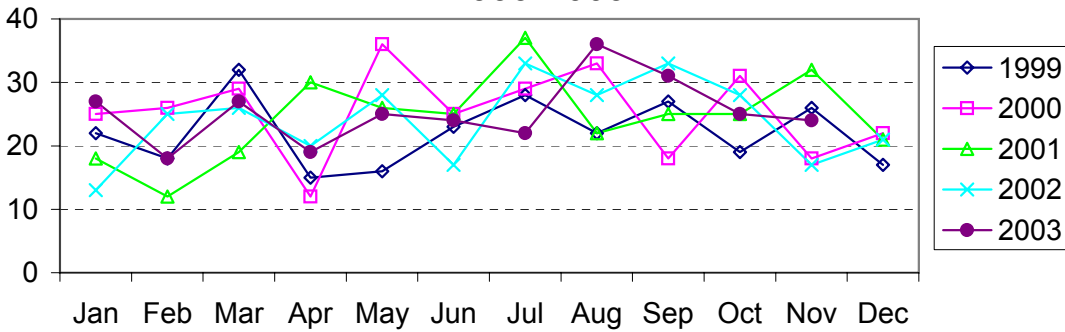


Homicide Reported by Month Charlotte-Mecklenburg Police Department: 1999-2003



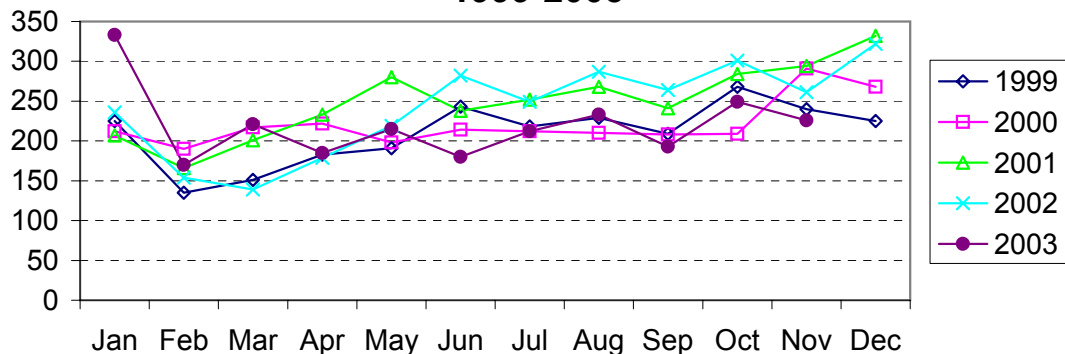
Through November, 2003

Rape Reported by Month Charlotte-Mecklenburg Police Department: 1999-2003



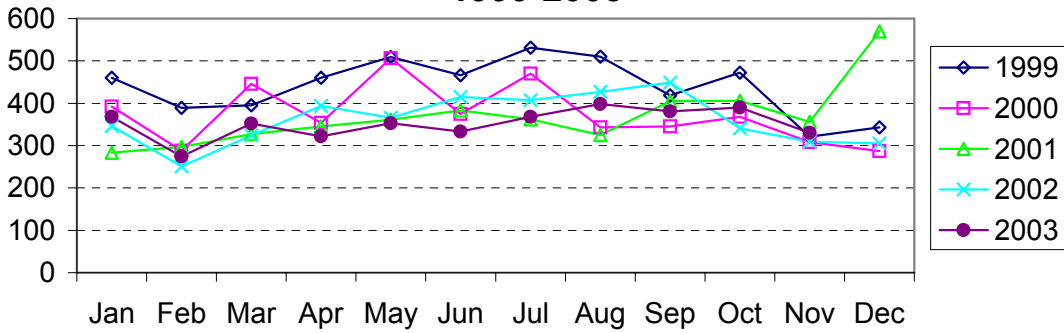
Through November, 2003

Robbery Reported by Month Charlotte-Mecklenburg Police Department: 1999-2003



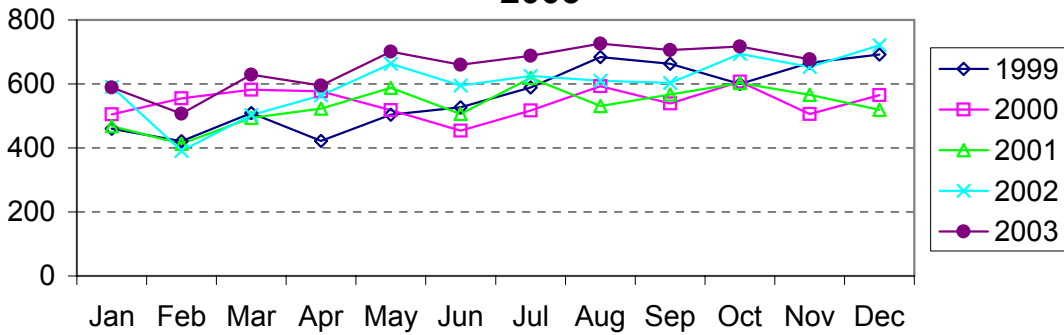
Through November, 2003

**Aggravated Assault Reported by Month
Charlotte-Mecklenburg Police Department:
1999-2003**



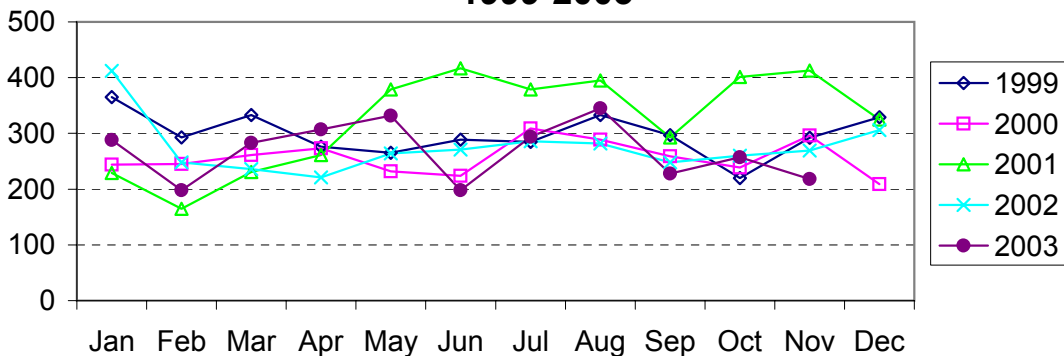
Through November, 2003

**Residential Burglary Reported by Month
Charlotte-Mecklenburg Police Department: 1999-
2003**



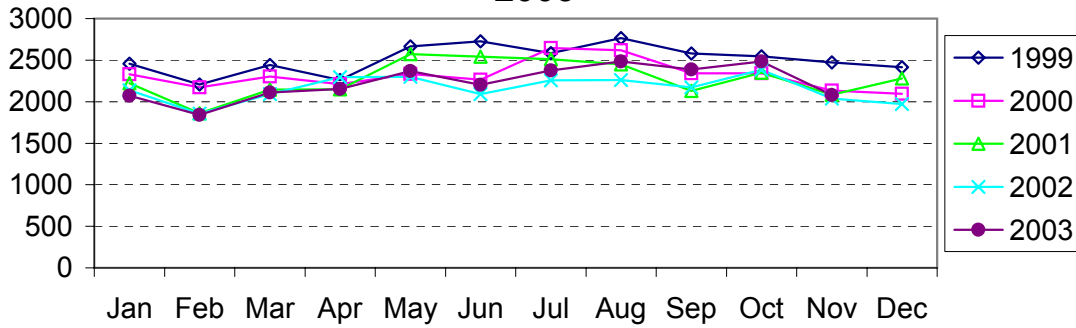
Through November, 2003

**Commercial Burglary Reported by Month
Charlotte-Mecklenburg Police Department:
1999-2003**



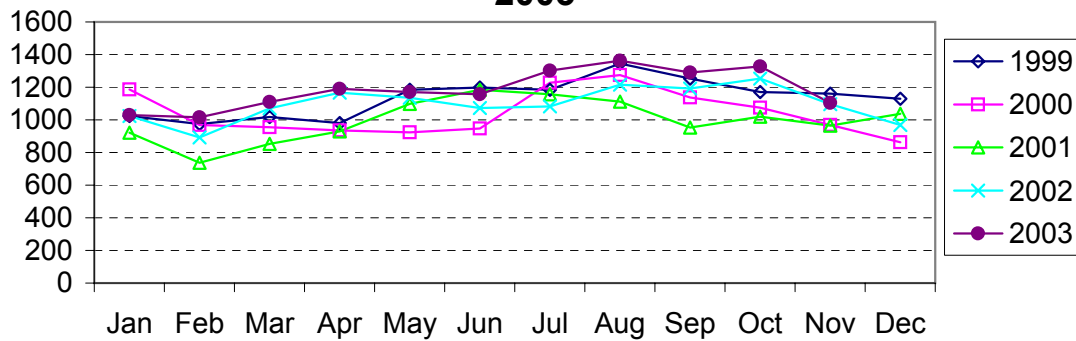
Through November, 2003

Larceny Reported by Month Charlotte-Mecklenburg Police Department: 1999-2003



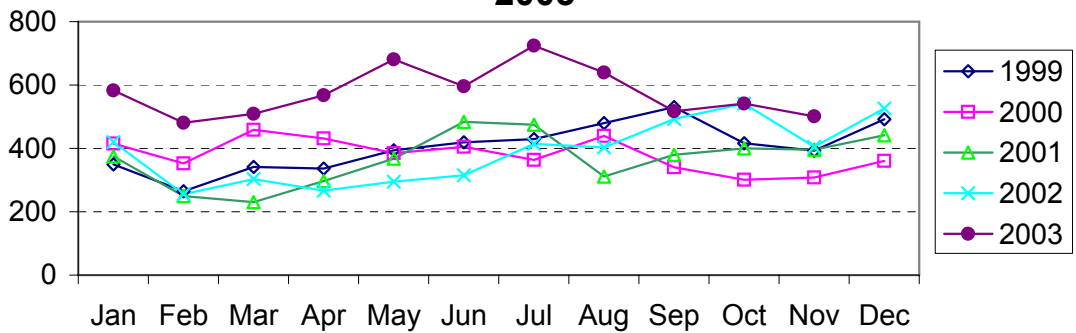
Through November, 2003

Larceny from Vehicle Reported by Month Charlotte-Mecklenburg Police Department: 1999-2003



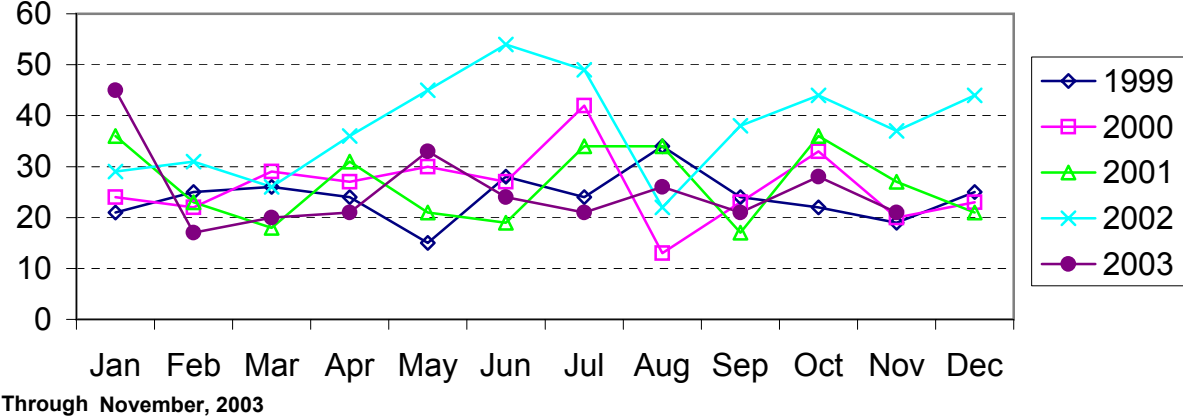
Through November, 2003

Vehicle Theft Reported by Month Charlotte-Mecklenburg Police Department: 1999-2003



Through November, 2003

Arson Reported by Month Charlotte-Mecklenburg Police Department: 1999-2003



Index Offenses Reported by Division and Service Area of Occurrence									
West Service Area: Jan-Nov, 2002-2003									
INDEX_CATEGORIES	Westover (A2)			Freedom (A3)			West Service Area		
	2002	2003	% Change	2002	2003	% Change	2002	2003	% Change
MURDER & NON-NEGLIGENT MANSLAUGHTER	5	6	20.0%	3	10	233.3%	8	16	100.0%
RAPE	25	21	-16.0%	25	41	64.0%	50	62	24.0%
ACTUAL	22	20	-9.1%	21	35	66.7%	43	55	27.9%
ATTEMPTED	3	1	-66.7%	4	6	50.0%	7	7	0.0%
ROBBERY	237	206	-13.1%	274	232	-15.3%	511	438	-14.3%
ARMED	176	157	-10.8%	225	184	-18.2%	401	341	-15.0%
STRONG-ARM	61	49	-19.7%	49	48	-2.0%	110	97	-11.8%
AGGRAVATED ASSAULT	369	376	1.9%	397	480	20.9%	766	856	11.7%
BURGLARY	665	786	18.2%	1165	1271	9.1%	1830	2057	12.4%
RESIDENTIAL	424	549	29.5%	689	871	26.4%	1113	1420	27.6%
COMMERCIAL	241	237	-1.7%	476	400	-16.0%	717	637	-11.2%
LARCENY	1336	1329	-0.5%	2059	2183	6.0%	3395	3512	3.4%
FROM AUTO	615	682	10.9%	1043	1069	2.5%	1658	1751	5.6%
BICYCLE	14	8	-42.9%	10	14	40.0%	24	22	-8.3%
SHOPLIFTING	168	132	-21.4%	231	193	-16.5%	399	325	-18.5%
OTHERS	539	507	-5.9%	775	907	17.0%	1314	1414	7.6%
VEHICLE THEFT	309	424	37.2%	500	744	48.8%	809	1168	44.4%
ARSON	20	20	0.0%	45	33	-26.7%	65	53	-18.5%
TOTALS	2966	3168	6.8%	4468	4994	11.8%	7434	8162	9.8%
VIOLENT PROPERTY	636 2330	609 2559	-4.2% 9.8%	699 3769	763 4231	9.2% 12.3%	1335 6099	1372 6790	2.8% 11.3%

Index Offenses Reported by Division and Service Area of Occurrence									
Southeast Service Area: Jan-Nov, 2002-2003									
INDEX_CATEGORIES	Providence (B1)			Independence (B3)			Southeast Service Area		
	2002	2003	% Change	2002	2003	% Change	2002	2003	% Change
MURDER & NON-NEGLIGENT MANSLAUGHTER	2	0	-100.0%	4	5	25.0%	6	5	-16.7%
RAPE	16	16	0.0%	22	26	18.2%	38	42	10.5%
ACTUAL	15	15	0.0%	17	23	35.3%	32	38	18.8%
ATTEMPTED	1	1	0.0%	5	3	-40.0%	6	4	-33.3%
ROBBERY	133	110	-17.3%	260	192	-26.2%	393	302	-23.2%
ARMED	104	87	-16.3%	211	159	-24.6%	315	246	-21.9%
STRONG-ARM	29	23	-20.7%	49	34	-30.6%	78	57	-26.9%
AGGRAVATED ASSAULT	188	185	-1.6%	291	287	-1.4%	479	472	-1.5%
BURGLARY	697	776	11.3%	956	911	-4.7%	1653	1687	2.1%
RESIDENTIAL	472	491	4.0%	703	690	-1.8%	1175	1181	0.5%
COMMERCIAL	225	285	26.7%	253	221	-12.6%	478	506	5.9%
LARCENY	1649	1642	-0.4%	2542	2573	1.2%	4191	4215	0.6%
FROM AUTO	730	776	6.3%	1470	1542	4.9%	2200	2318	5.4%
BICYCLE	15	14	-6.7%	28	38	35.7%	43	52	20.9%
SHOPLIFTING	252	177	-29.8%	281	218	-22.4%	533	395	-25.9%
OTHERS	652	675	3.5%	763	775	1.6%	1415	1450	2.5%
VEHICLE THEFT	197	313	58.9%	364	656	80.2%	561	969	72.7%
ARSON	20	11	-45.0%	58	30	-48.3%	78	41	-47.4%
TOTALS	2902	3053	5.2%	4497	4680	4.1%	7399	7733	4.5%
VIOLENT PROPERTY	339 2563	311 2742	-8.3% 7.0%	577 3920	510 4170	-11.6% 6.4%	916 6483	821 6912	-10.4% 6.6%

The data in the district breakdowns does not include a small number of offenses in which the location of the offense was unknown or was entered without a valid tract assignment. Districts are not equal in geographic size, demographics, zoning/development, and other factors that influence the rate of crimes committed in an area. Therefore, the comparison of raw offense totals across districts is not advisable.

Index Offenses Reported by Division and Service Area of Occurrence									
Northeast Service Area: Jan-Nov, 2002-2003									
INDEX_CATEGORIES	North (C1)			Hickory Grove (C3)			Northeast Service Area		
	2002	2003	% Change	2002	2003	% Change	2002	2003	% Change
MURDER & NON-NEGLIGENT MANSLAUGHTER	5	5	0.0%	5	7	40.0%	10	12	20.0%
RAPE	20	29	45.0%	29	26	-10.3%	49	55	12.2%
ACTUAL	17	26	52.9%	27	20	-25.9%	44	46	4.5%
ATTEMPTED	3	3	0.0%	2	6	200.0%	5	9	80.0%
ROBBERY	195	179	-8.2%	247	238	-3.6%	442	417	-5.7%
ARMED	157	143	-8.9%	205	187	-8.8%	362	330	-8.8%
STRONG-ARM	37	36	-2.7%	42	51	21.4%	79	87	10.1%
AGGRAVATED ASSAULT	327	313	-4.3%	375	396	5.6%	702	709	1.0%
BURGLARY	974	1184	21.6%	1082	1038	-4.1%	2056	2222	8.1%
RESIDENTIAL	663	849	28.1%	813	792	-2.6%	1476	1641	11.2%
COMMERCIAL	311	335	7.7%	269	246	-8.6%	580	581	0.2%
LARCENY	3491	3643	4.4%	1980	2143	8.2%	5471	5786	5.8%
FROM AUTO	1909	2117	10.9%	1058	1151	8.8%	2967	3268	10.1%
BICYCLE	15	11	-26.7%	20	26	30.0%	35	37	5.7%
SHOPLIFTING	433	314	-27.5%	185	215	16.2%	618	529	-14.4%
OTHERS	1134	1201	5.9%	717	751	4.7%	1851	1952	5.5%
VEHICLE THEFT	424	736	73.6%	422	760	80.1%	846	1496	76.8%
ARSON	34	35	2.9%	51	35	-31.4%	85	70	-17.6%
TOTALS	5470	6124	12.0%	4191	4643	10.8%	9661	10767	11.4%
VIOLENT	547	526	-3.8%	656	667	1.7%	1203	1193	-0.8%
PROPERTY	4923	5598	13.7%	3535	3976	12.5%	8458	9574	13.2%

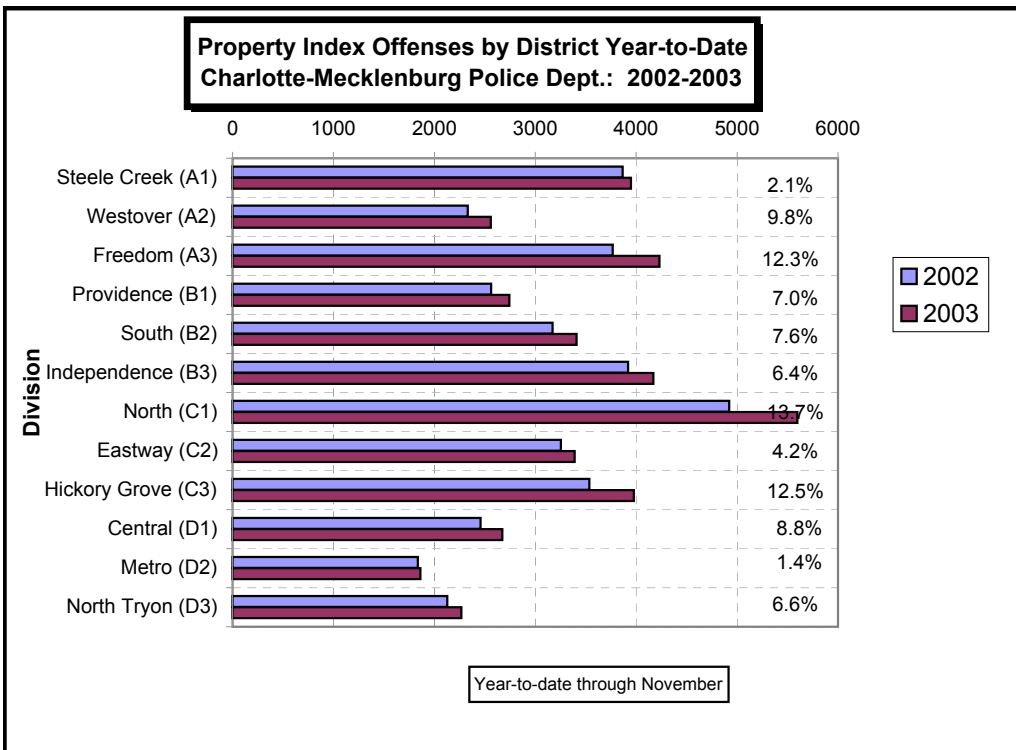
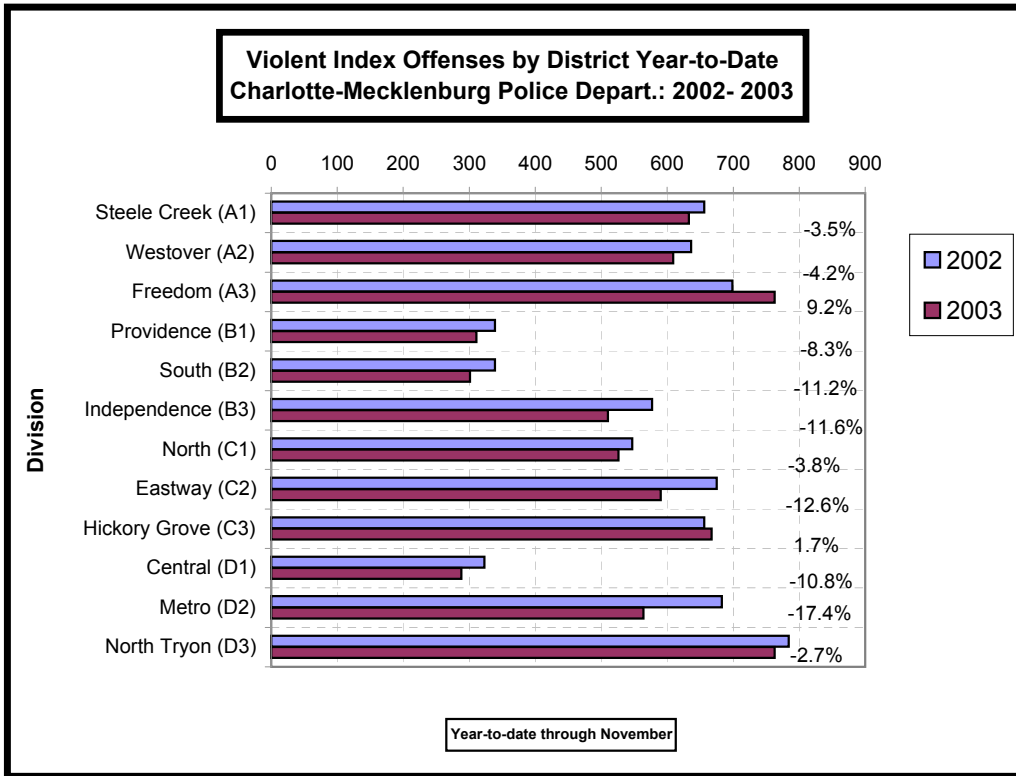
Index Offenses Reported by Division and Service Area of Occurrence									
Central Service Area: Jan-Nov, 2002-2003									
INDEX_CATEGORIES	Central (D1)			Metro (D2)			Central Service Area		
	2002	2003	% Change	2002	2003	% Change	2002	2003	% Change
MURDER & NON-NEGLIGENT MANSLAUGHTER	3	2	-33.3%	12	6	-50.0%	15	8	-46.7%
RAPE	18	15	-16.7%	16	19	18.8%	34	34	0.0%
ACTUAL	17	14	-17.6%	13	15	15.4%	30	29	-3.3%
ATTEMPTED	1	1	0.0%	3	4	33.3%	4	5	25.0%
ROBBERY	142	110	-22.5%	196	165	-15.8%	338	275	-18.6%
ARMED	77	67	-13.0%	159	129	-18.9%	236	196	-16.9%
STRONG-ARM	65	43	-33.8%	37	36	-2.7%	102	79	-22.5%
AGGRAVATED ASSAULT	160	161	0.6%	459	374	-18.5%	619	535	-13.6%
BURGLARY	309	361	16.8%	567	492	-13.2%	876	853	-2.6%
RESIDENTIAL	144	197	36.8%	381	369	-3.1%	525	566	7.8%
COMMERCIAL	165	164	-0.6%	186	123	-33.9%	351	287	-18.2%
LARCENY	1937	1877	-3.1%	950	980	3.2%	2887	2857	-1.0%
FROM AUTO	1021	1104	8.1%	488	558	14.3%	1509	1662	10.1%
BICYCLE	13	9	-30.8%	3	14	366.7%	16	23	43.8%
SHOPLIFTING	73	64	-12.3%	57	40	-29.8%	130	104	-20.0%
OTHERS	830	700	-15.7%	402	368	-8.5%	1232	1068	-13.3%
VEHICLE THEFT	206	423	105.3%	288	373	29.5%	494	796	61.1%
ARSON	5	13	160.0%	30	16	-46.7%	35	29	-17.1%
TOTALS	2780	2962	6.5%	2518	2425	-3.7%	5298	5387	1.7%
VIOLENT	323	288	-10.8%	683	564	-17.4%	1006	852	-15.3%
PROPERTY	2457	2674	8.8%	1835	1861	1.4%	4292	4535	5.7%

The data in the district breakdowns does not include a small number of offenses in which the location of the offense was unknown or was entered without a valid tract assignment. Districts are not equal in geographic size, demographics, zoning/development, and other factors that influence the rate of crimes committed in an area. Therefore, the comparison of raw offense totals across districts is not advisable.

Index Offenses Reported by Division and Service Area of Occurrence									
East Service Area: Jan-Nov, 2002-2003									
INDEX_CATEGORIES	Eastway (C2)			North Tryon (D3)			East Service Area		
	2002	2003	% Change	2002	2003	% Change	2002	2003	% Change
MURDER & NON-NEGLIGENT MANSLAUGHTER	1	3	200.0%	14	7	-50.0%	15	10	-33.3%
RAPE	28	18	-35.7%	20	17	-15.0%	48	35	-27.1%
ACTUAL	23	17	-26.1%	20	17	-15.0%	43	34	-20.9%
ATTEMPTED	5	1	-80.0%	0	0	NA	5	1	-80.0%
ROBBERY	293	300	2.4%	271	297	9.6%	564	597	5.9%
ARMED	228	232	1.8%	214	244	14.0%	442	476	7.7%
STRONG-ARM	65	68	4.6%	57	53	-7.0%	122	121	-0.8%
AGGRAVATED ASSAULT	353	269	-23.8%	479	442	-7.7%	832	711	-14.5%
BURGLARY	903	854	-5.4%	561	703	25.3%	1464	1557	6.4%
RESIDENTIAL	714	631	-11.6%	352	463	31.5%	1066	1094	2.6%
COMMERCIAL	189	223	18.0%	209	240	14.8%	398	463	16.3%
LARCENY	1969	2038	3.5%	1145	1087	-5.1%	3114	3125	0.4%
FROM AUTO	789	890	12.8%	555	570	2.7%	1344	1460	8.6%
BICYCLE	8	15	87.5%	13	11	-15.4%	21	26	23.8%
SHOPLIFTING	553	512	-7.4%	110	74	-32.7%	663	586	-11.6%
OTHERS	619	621	0.3%	467	432	-7.5%	1086	1053	-3.0%
VEHICLE THEFT	351	482	37.3%	394	470	19.3%	745	952	27.8%
ARSON	31	16	-48.4%	28	9	-67.9%	59	25	-57.6%
TOTALS	3929	3980	1.3%	2912	3032	4.1%	6841	7012	2.5%
VIOLENT	675	590	-12.6%	784	763	-2.7%	1459	1353	-7.3%
PROPERTY	3254	3390	4.2%	2128	2269	6.6%	5382	5659	5.1%

Index Offenses Reported by Division and Service Area of Occurrence									
South Service Area: Jan-Nov, 2002-2003									
INDEX_CATEGORIES	Steele Creek (A1)			South (B2)			South Service Area		
	2002	2003	% Change	2002	2003	% Change	2002	2003	% Change
MURDER & NON-NEGLIGENT MANSLAUGHTER	6	8	33.3%	2	3	50.0%	8	11	37.5%
RAPE	32	25	-21.9%	16	21	31.3%	48	46	-4.2%
ACTUAL	28	21	-25.0%	14	18	28.6%	42	39	-7.1%
ATTEMPTED	4	4	0.0%	2	3	50.0%	6	7	16.7%
ROBBERY	205	246	20.0%	117	112	-4.3%	322	358	11.2%
ARMED	163	190	16.6%	88	85	-3.4%	251	275	9.6%
STRONG-ARM	42	46	9.5%	29	27	-6.9%	71	73	2.8%
AGGRAVATED ASSAULT	413	354	-14.3%	204	165	-19.1%	617	519	-15.9%
BURGLARY	775	805	3.9%	779	852	9.4%	1554	1657	6.6%
RESIDENTIAL	498	555	11.4%	605	673	11.2%	1103	1228	11.3%
COMMERCIAL	277	250	-9.7%	174	179	2.9%	451	429	-4.9%
LARCENY	2656	2576	-3.0%	2094	2192	4.7%	4750	4768	0.4%
FROM AUTO	1349	1227	-9.0%	1141	1216	6.6%	2490	2443	-1.9%
BICYCLE	13	19	46.2%	16	16	0.0%	29	35	20.7%
SHOPLIFTING	414	410	-1.0%	166	149	-10.2%	580	559	-3.6%
OTHERS	880	920	4.5%	771	811	5.2%	1651	1731	4.8%
VEHICLE THEFT	399	539	35.1%	248	343	38.3%	647	882	36.3%
ARSON	36	27	-25.0%	49	23	-53.1%	85	50	-41.2%
TOTALS	4522	4580	1.3%	3509	3711	5.8%	8031	8291	3.2%
VIOLENT	656	633	-3.5%	339	301	-11.2%	995	934	-6.1%
PROPERTY	3866	3947	2.1%	3170	3410	7.6%	7036	7357	4.6%

The data in the district breakdowns does not include a small number of offenses in which the location of the offense was unknown or was entered without a valid tract assignment. Districts are not equal in geographic size, demographics, zoning/development, and other factors that influence the rate of crimes committed in an area. Therefore, the comparison of raw offense totals across districts is not advisable.



The data in the district breakdowns does not include a small number of offenses in which the location of the offense was unknown or was entered without a valid tract assignment. Districts are not equal in geographic size, demographics, zoning/development, and other factors that influence the rate of crimes committed in an area. Therefore, the comparison of raw offense totals across districts is not advisable.

Arrests by Charlotte-Mecklenburg Police Department
Year-To-Date: 2002-2003
(Through November)

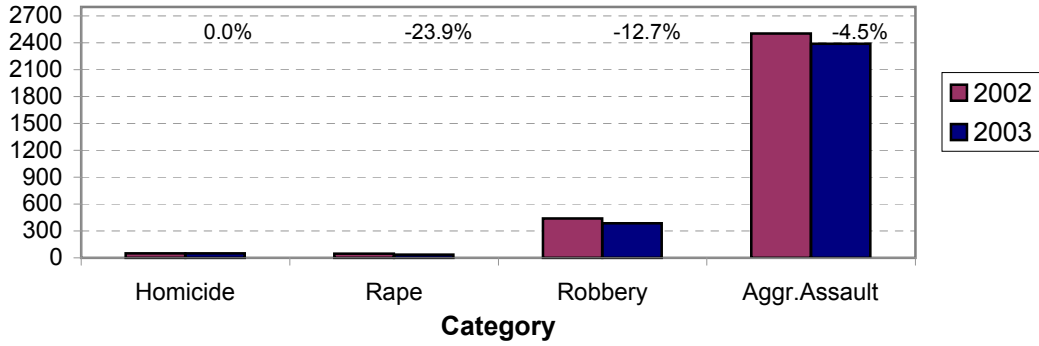
CATEGORY	ADULTS (AGE 18 & OLDER):			JUVENILES (UNDER 18):			TOTAL ARRESTS:		
	2002 Y-T-D	2003 Y-T-D	% CHANGE	2002 Y-T-D	2003 Y-T-D	% CHANGE	2002 Y-T-D	2003 Y-T-D	% CHANGE
Murder/Non-Negligent Manslaughter	48	43	-10.4%	2	7	250.0%	50	50	0.0%
Negligent & Vehicular Manslaughter	5	1	-80.0%	0	0	NA	5	1	-80.0%
Rape	42	29	-31.0%	4	6	50.0%	46	35	-23.9%
Robbery	319	275	-13.8%	122	110	-9.8%	441	385	-12.7%
Aggravated Assault	2205	2050	-7.0%	297	340	14.5%	2502	2390	-4.5%
Burglary	445	457	2.7%	228	206	-9.6%	673	663	-1.5%
Larceny	1443	1388	-3.8%	591	603	2.0%	2034	1991	-2.1%
Vehicle Theft	107	143	33.6%	133	345	159.4%	240	488	103.3%
Non-Aggravated Assault	1578	1588	0.6%	714	827	15.8%	2292	2415	5.4%
Arson	20	18	-10.0%	38	26	-31.6%	58	44	-24.1%
Forgery/Counterfiet	123	119	-3.3%	1	4	300.0%	124	123	-0.8%
Fraud	616	525	-14.8%	8	8	0.0%	624	533	-14.6%
Embezzlement	114	98	-14.0%	12	4	-66.7%	126	102	-19.0%
Stolen Property	462	488	5.6%	115	141	22.6%	577	629	9.0%
Vandalism	222	222	0.0%	162	189	16.7%	384	411	7.0%
Weapons	449	438	-2.4%	61	65	6.6%	510	503	-1.4%
Prostitution	247	322	30.4%	5	3	-40.0%	252	325	29.0%
Sex Offenses	270	213	-21.1%	41	41	0.0%	311	254	-18.3%
Drugs	2745	2842	3.5%	264	280	6.1%	3009	3122	3.8%
Gambling	3	25	733.3%	0	0	NA	3	25	733.3%
Offenses vs. Family	26	10	-61.5%	0	0	NA	26	10	-61.5%
DUI	2187	1915	-12.4%	15	10	-33.3%	2202	1925	-12.6%
Liquor	247	177	-28.3%	11	14	27.3%	258	191	-26.0%
Disorder Conduct	500	536	7.2%	169	268	58.6%	669	804	20.2%
Other Non-Traffic	6626	6976	5.3%	646	745	15.3%	7272	7721	6.2%
VIOLENT INDEX¹	2614	2397	-8.3%	425	463	8.9%	3039	2860	-5.9%
PROPERTY INDEX²	2015	2006	-0.4%	990	1180	19.2%	3005	3186	6.0%
INDEX SUBTOTAL	4629	4403	-4.9%	1415	1643	16.1%	6044	6046	0.0%
PART 2 SUBTOTAL³	16420	16495	0.5%	2224	2599	16.9%	18644	19094	2.4%
TOTAL	21049	20898	-0.7%	3639	4242	16.6%	24688	25140	1.8%

¹Violent Index includes murder and non-negligent manslaughter, rape, robbery, and aggravated assault.

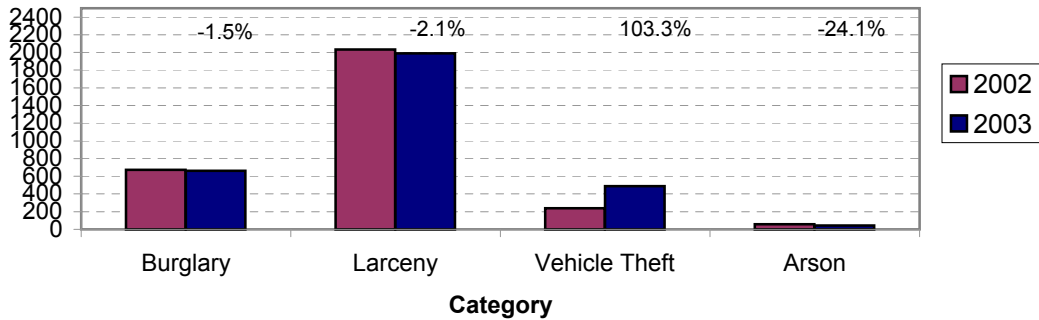
²Property Index includes burglary, larceny, vehicle theft, and arson.

³Part 2 crimes include non-traffic crimes not counted in the Index totals.

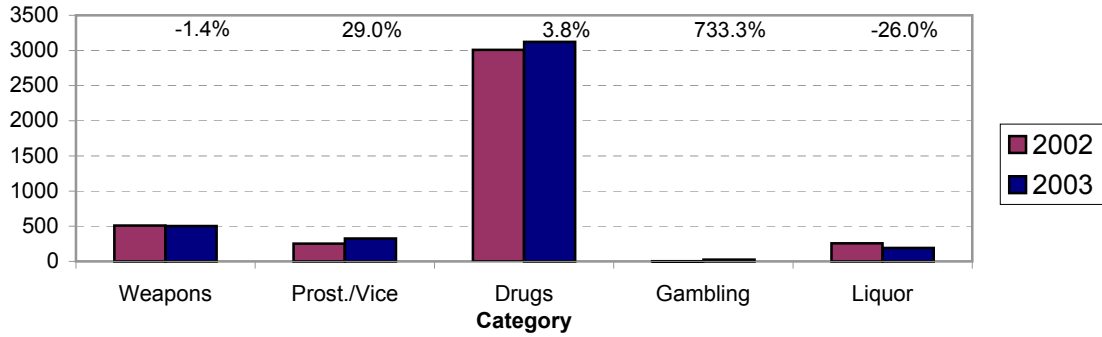
**Violent Index Arrests Year-to-Date
Charlotte-Mecklenburg Police Department: 2002-2003
(Through November)**



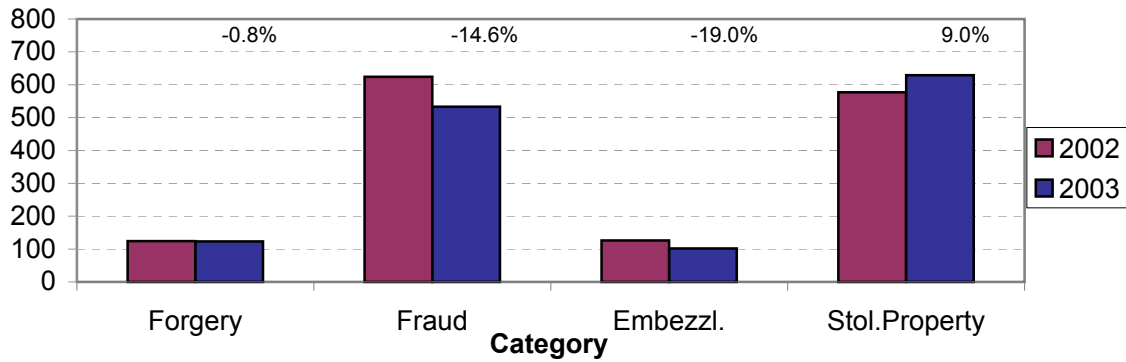
**Property Index Arrests Year-to-Date
Charlotte-Mecklenburg Police Department: 2002-2003
(Through November)**



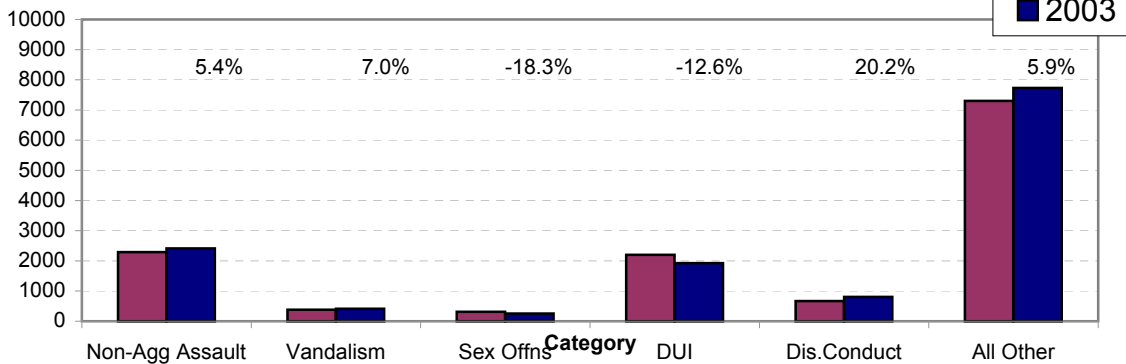
**Arrests for Vice/CCW/Drugs/Etc. Year-to-Date
Charlotte-Mecklenburg Police Department: 2002 - 2003
(Through November)**



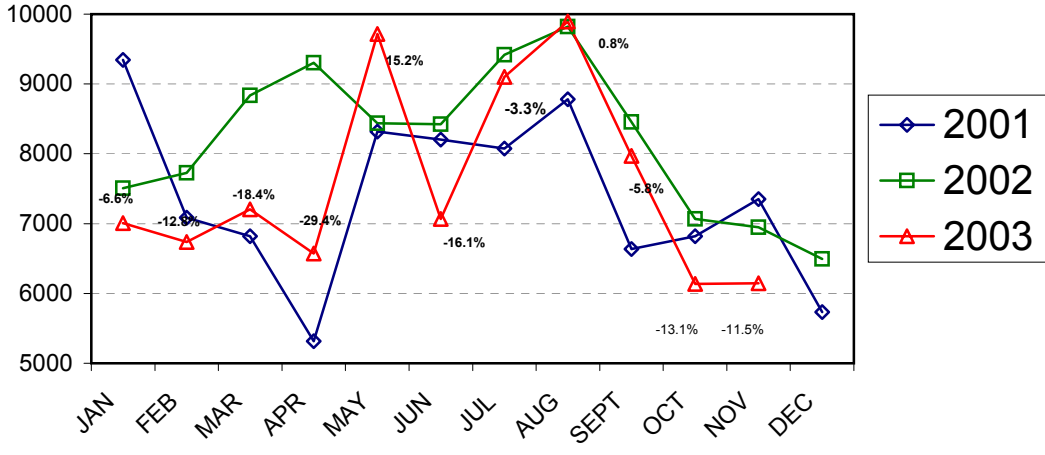
**Arrests for Property/White Collar Crime Year-to-Date
Charlotte-Mecklenburg Police Department: 2002 - 2003
(Through November)**



**Arrests for Other Categories Year-to-Date
Charlotte-Mecklenburg Police Department: 2002 - 2003
(Through November)**



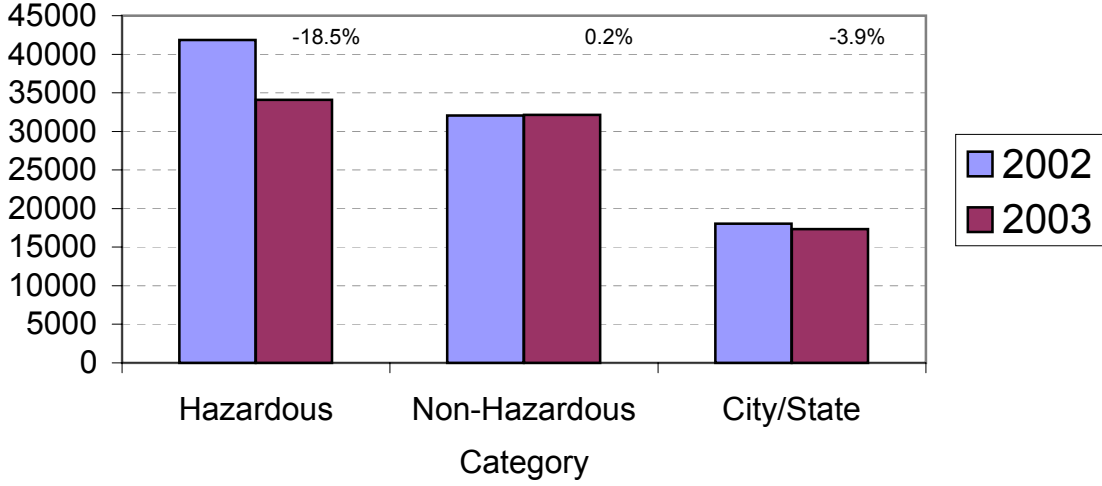
**Total Citation Enforcement by Month
Charlotte-Mecklenburg Police Dept.: 2001-2003**



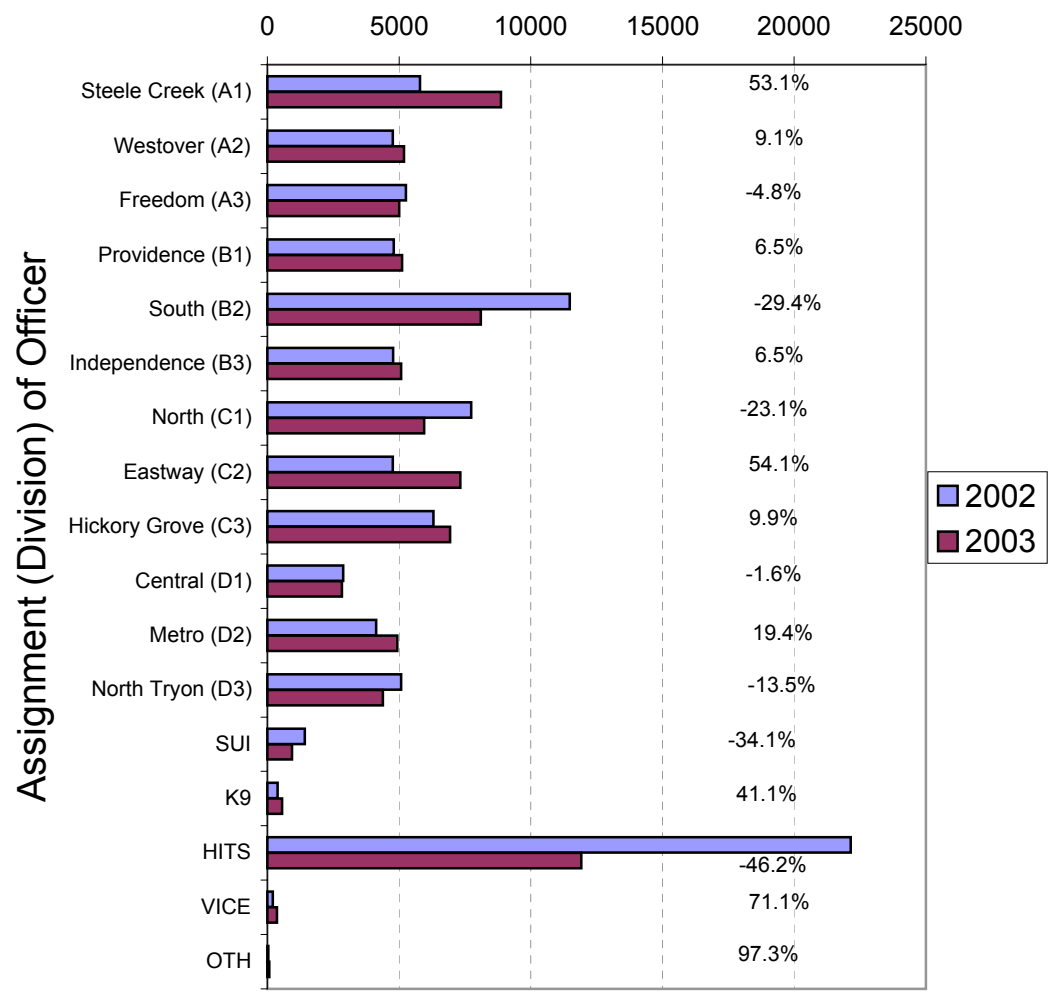
(Through November, 2003)

(Includes Hazardous, Non-Hazardous, and City/State Citations)

**CMPD Citation Enforcement by Category
Year-to-Date, 2002 - 2003
(Through November, 2003)**



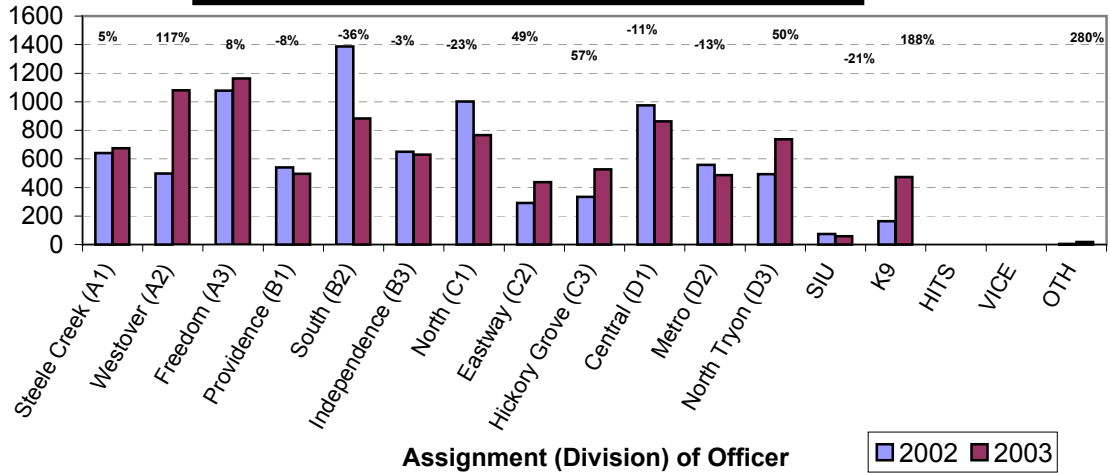
**Citations Issued Year-to-Date by CMPD Divisions
2002 - 2003
(Through November, 2003)**



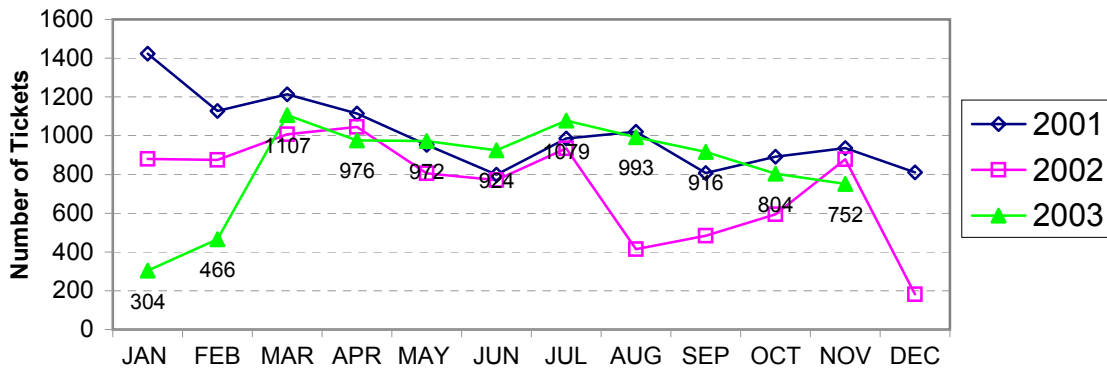
**Citations Issued by the Charlotte Mecklenburg Police Dept. Year-to-Date
(Through November, 2003)**

Total Citations	2002	2003	% Change
Hazardous	41,836	34,087	-18.5%
Non-Hazardous	32,061	32,137	0.2%
Other City/State Statute/Ordinance	18,043	17,332	-3.9%
Total	91,940	83,556	-9.1%

**Warning Tickets Issued by CMPD Division
Year-to-Date, 2002 - 2003
Through November,**



**Total Warning Tickets Issued by CMPD
By Month: 2001 - 2003**



**Warning Tickets Issued by CMPD Year-to-Date
Through November, 2003**

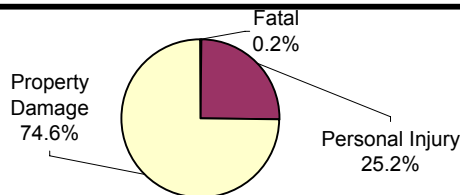
	2002	2003	% Change
Total Warning Tickets	8689	9293	7.0%

**Traffic Collison Reports
Charlotte-Mecklenburg Police Department
Year-to-Date: 2002-2003
(Through November)**

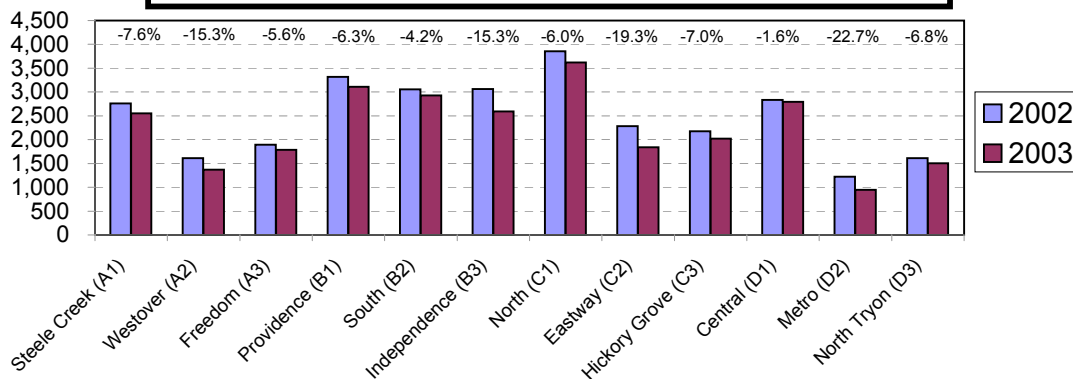
<u>Type</u>	<u>2002</u>	<u>2003</u>	<u>% Change</u>
Fatal Collisions	57	50	-12.3%
Vehicle Occupants Killed	45	49	8.9%
Pedestrians Killed	13	6	-53.8%
Personal Injury Collisions	7193	6812	-5.4%
Property Damage Collisions	22468	20334	-9.5%
Total Collisions	29718	27196	-8.5%

* The number of fatal collisions and the number of persons killed in those incidents is taken from the HITS file. Their records are updated for deaths that occur after the initial report is filed.

**Traffic Collisions Reported by Type
Charlotte-Mecklenburg Police Department:
2003 Year-to-Date
(Through November)**



**Traffic Collisions Reported by Charlotte-Mecklenburg Police Dept.
Year-to-Date By Location (Division) : 2002 -2003
(Through November)**



Uniform Crime Reporting Procedures:

The Charlotte-Mecklenburg Police Department reports offense and arrest statistics in accordance with standard Uniform Crime Reporting (UCR) guidelines. UCR policy states that any adjustments to previous months can be made on the current month's report:

...In tabulating crime counts, an agency may find that offense totals for past months require adjustments due to developments in the investigation or other handling of the matter. It may be necessary to adjust totals reported to UCR for the past month or prior months. Needed adjustments can be made on the current month's report and do not affect the reliability of the figures in that such adjustments tend to equalize each other from month to month over a period of time.

- *Uniform Crime Reporting Handbook*, FBI, 1984, p. 42-43

We are required to report crime monthly to the UCR program, and we do therefore make an effort to process monthly changes in a timely manner. However, occasionally due to the review and processing required for reclassifying, unfounding or clearing cases, the current month's totals may reflect the processing of a backlog of these changes from previous months.

Users of the data are cautioned that conclusions about substantial changes in crime trends or in clearance rates based on only a single month's data or trend may reflect some of these adjustments. For this reason, in addition to the monthly and year-to-date trends on Page 1, the monthly report routinely includes a comparison for the previous 12 months (p. 4), as well as graphs that provide seasonal/monthly comparisons over a five-year period (p. 5-8).

We do make an effort to present the most accurate information available at the time this report is published. However, errors in compiling the data and charts do sometimes occur, so please notify the Research, Planning, and Analysis office if you have any questions about the data in this report.

The new division names are used in this report. For ease of use, they also include the old district designations in parentheses.

The chart formats for this report were revised with the assistance of Officer David Padgett, who converted a number of spreadsheets from old software into the newer Excel software.

V. L. Sorban
Research, Planning & Analysis Bureau