



**CHARLOTTE-MECKLENBURG POLICE DEPARTMENT
MONTHLY SUMMARY REPORT
OCTOBER, 2003**

**Darrel Stephens
Chief of Police**

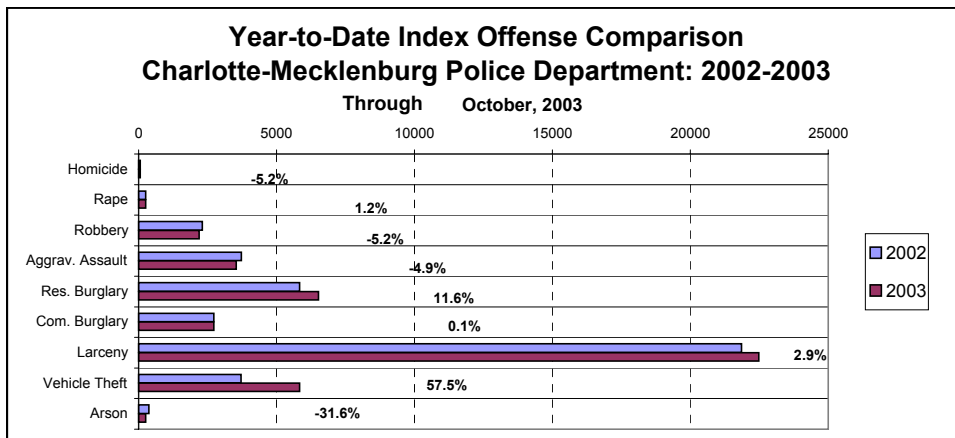
INDEX OFFENSES REPORTED TO CHARLOTTE-MECKLENBURG POLICE DEPARTMENT

October, 2003 INDEX OFFENSES	# THIS MONTH	% OF ALL INDEX	# LAST MONTH	MONTHLY % CHANGE	SAME MONTH LAST YEAR	MONTHLY % CHANGE	THIS YEAR TO DATE	LAST YEAR TO DATE	ANNUAL % CHANGE
HOMICIDE (MURDER & NON- NEGLIGENT MANSLAUGHTER)	7	0.1%	5	40.0%	3	133.3%	55	58	-5.2%
RAPE TOTAL	25	0.5%	31	-19.4%	28	-10.7%	254	251	1.2%
ACTUAL	20	0.4%	25	-20.0%	25	-20.0%	220	221	-0.5%
ATTEMPT	5	0.1%	6	-16.7%	3	66.7%	34	30	13.3%
ROBBERY TOTAL	249	5.3%	193	29.0%	301	-17.3%	2191	2310	-5.2%
ARMED	200	4.3%	154	29.9%	235	-14.9%	1720	1791	-4.0%
STRONG-ARM	49	1.0%	39	25.6%	66	-25.8%	471	519	-9.2%
AGGRAVATED ASSAULT TOTAL	390	8.3%	381	2.4%	341	14.4%	3539	3720	-4.9%
BURGLARY TOTAL	974	20.7%	934	4.3%	954	2.1%	9248	8567	7.9%
RESIDENTIAL	717	15.3%	706	1.6%	694	3.3%	6518	5839	11.6%
COMMERCIAL	257	5.5%	228	12.7%	260	-1.2%	2730	2728	0.1%

FORCE	753	16.0%	736	2.3%	757	-0.5%	7288	6631	9.9%
NO FORCE	164	3.5%	152	7.9%	125	31.2%	1381	1344	2.8%
ATTEMPT	57	1.2%	46	23.9%	72	-20.8%	569	592	-3.9%
LARCENY TOTAL	2484	52.9%	2387	4.1%	2384	4.2%	22480	21851	2.9%
\$200 AND OVER	1217	25.9%	1227	-0.8%	1172	3.8%	11212	10540	6.4%
\$50 TO \$200	455	9.7%	412	10.4%	439	3.6%	4016	4134	-2.9%
UNDER \$50	812	17.3%	748	8.6%	773	5.0%	7252	7177	1.0%

FROM AUTO	1328	28.3%	1290	2.9%	1253	6.0%	11955	11105	7.7%
BICYCLE	10	0.2%	33	-69.7%	14	-28.6%	185	155	19.4%
SHOPLIFTING	276	5.9%	219	26.0%	302	-8.6%	2258	2700	-16.4%
OTHERS	870	18.5%	845	3.0%	815	6.7%	8082	7891	2.4%
VEHICLE THEFT TOTAL	541	11.5%	517	4.6%	541	0.0%	5839	3707	57.5%
ARSON TOTAL	28	0.6%	21	33.3%	44	-36.4%	256	374	-31.6%
TOTALS	4698	100.0%	4469	5.1%	4596	2.2%	43862	40838	7.4%
VIOLENT PROPERTY	671 4027	14.3% 85.7%	610 3859	10.0% 4.4%	673 3923	-0.3% 2.7%	6039 37823	6339 34499	-4.7% 9.6%

NOTE: These totals include offenses reported to the Charlotte-Mecklenburg Police Department in accordance with the Uniform Crime Reporting Program. Totals for homicide do not include cases investigated by the police but classed by UCR guidelines as negligent manslaughter or as "justifiable homicide."

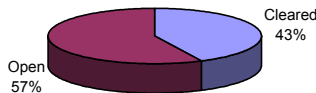


INDEX CLEARANCES REPORTED BY THE CHARLOTTE-MECKLENBURG POLICE DEPARTMENT

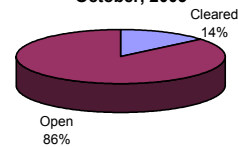
October, 2003 INDEX CLEARANCES	THIS MONTH:		LAST MONTH:		SAME MO. LAST YR:		THIS YEAR TO DATE:		LAST YEAR TO DATE:	
	NO.	%	NO.	%	NO.	%	NO.	%	NO.	%
MURDER & NON-NEGLIGENT MANSLAUGHTER	1	14.3%	2	40.0%	8	266.7%	29	52.7%	35	60.3%
RAPE TOTAL	4	16.0%	13	41.9%	15	53.6%	171	67.3%	101	40.2%
ACTUAL	3	15.0%	12	48.0%	11	44.0%	150	68.2%	87	39.4%
ATTEMPT	1	20.0%	1	16.7%	4	133.3%	21	61.8%	14	46.7%
ROBBERY TOTAL	20	8.0%	27	14.0%	150	49.8%	450	20.5%	500	21.6%
ARMED	12	6.0%	18	11.7%	124	52.8%	306	17.8%	367	20.5%
STRONG-ARM	8	16.3%	9	23.1%	26	39.4%	144	30.6%	133	25.6%
AGGRAVATED ASSAULT TOTAL	140	35.9%	184	48.3%	320	93.8%	1931	54.6%	1744	46.9%
BURGLARY TOTAL	40	4.1%	71	7.6%	149	15.6%	1107	12.0%	770	9.0%
RESIDENTIAL	33	4.6%	60	8.5%	122	17.6%	745	11.4%	601	10.3%
COMMERCIAL	7	2.7%	11	4.8%	27	10.4%	362	13.3%	169	6.2%
LARCENY TOTAL	197	7.9%	204	8.5%	308	12.9%	2915	13.0%	2350	10.8%
FROM AUTO	23	1.7%	21	1.6%	42	3.4%	391	3.3%	268	2.4%
BICYCLE	1	10.0%	2	6.1%	2	14.3%	18	9.7%	14	9.0%
SHOPLIFTING	131	47.5%	105	47.9%	166	55.0%	1283	56.8%	1401	51.9%
OTHERS	42	4.8%	76	9.0%	98	12.0%	1223	15.1%	667	8.5%
VEHICLE THEFT TOTAL	115	21.3%	86	16.6%	128	23.7%	1168	20.0%	702	18.9%
ARSON TOTAL	2	7.1%	6	28.6%	9	20.5%	64	25.0%	79	21.1%
TOTALS	519	11.0%	593	13.3%	1087	23.7%	7835	17.9%	6281	15.4%
VIOLENT PROPERTY	165	24.6%	226	37.0%	493	73.3%	2581	42.7%	2380	37.5%
	354	8.8%	367	9.5%	594	15.1%	5254	13.9%	3901	11.3%

NOTE: Clearances are reported in accordance with Uniform Crime Report guidelines. Since clearances are not counted until they are entered into the Records system, any delays in processing may result in some clearances being reported in succeeding months.

**Year-to-Date Violent Index Clearance Rate
Charlotte-Mecklenburg Police Department: 2003
October, 2003**

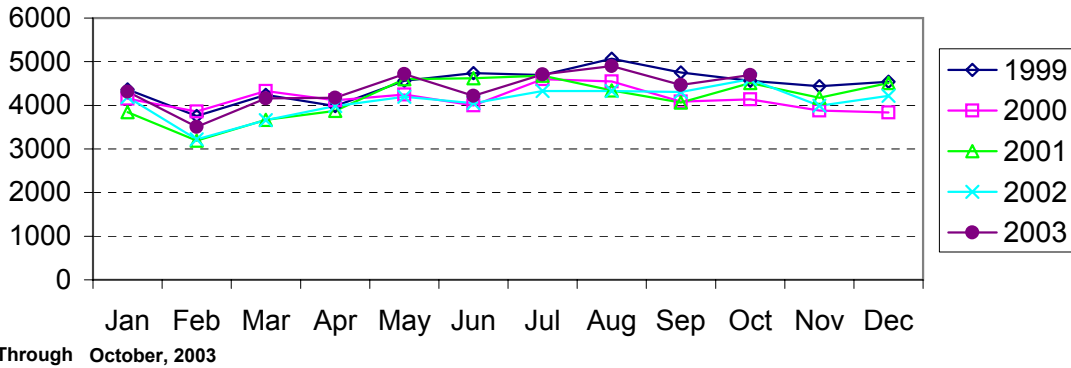


**Year-to-Date Property Index Clearance Rate
Charlotte-Mecklenburg Police Department: 2003
October, 2003**

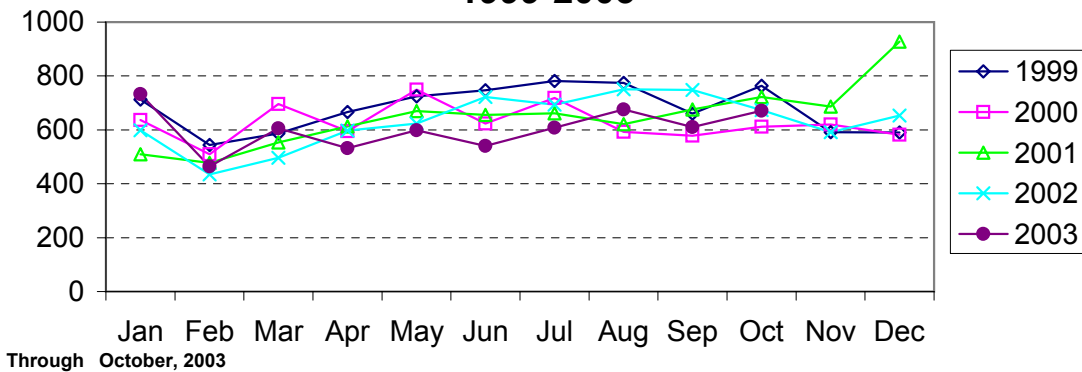


Clearance rates for crime reporting are calculated by dividing the number of crimes cleared during a designated time span by the number of crimes reported in the same period and converting the result to a percentage (multiplying by 100). Since cases from previous reporting periods can be cleared during the designated time span, the rate may be higher than 100%.

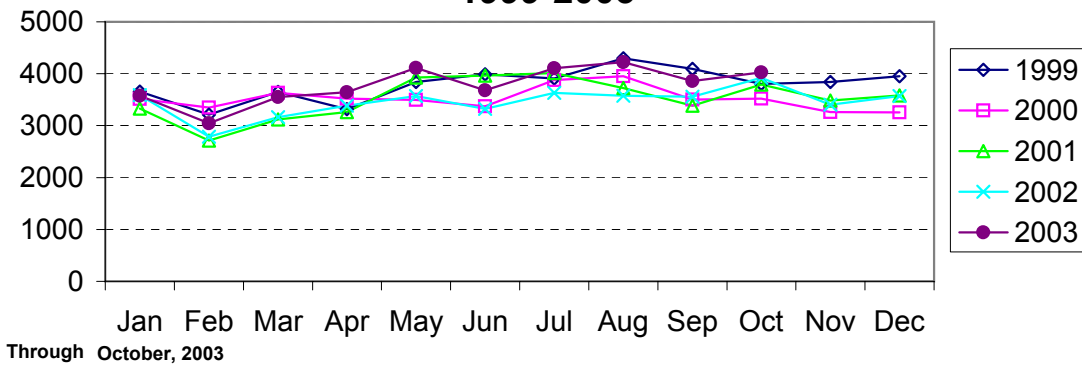
Index Offenses Reported by Month Charlotte-Mecklenburg Police Department: 1999-2003



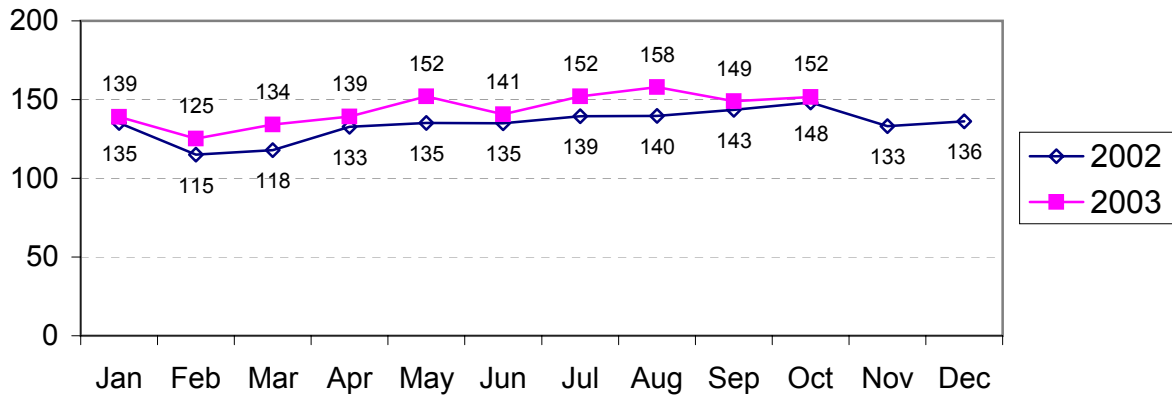
Violent Index Offenses Reported by Month Charlotte-Mecklenburg Police Department: 1999-2003



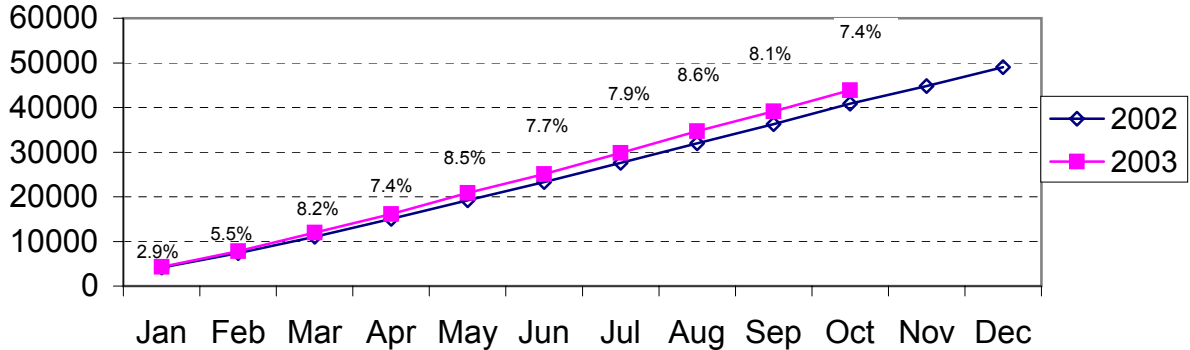
Property Index Offenses Reported by Month Charlotte-Mecklenburg Police Department: 1999-2003



Index Offense Per Day Average by Month Charlotte-Mecklenburg Police Department: 2002-2003

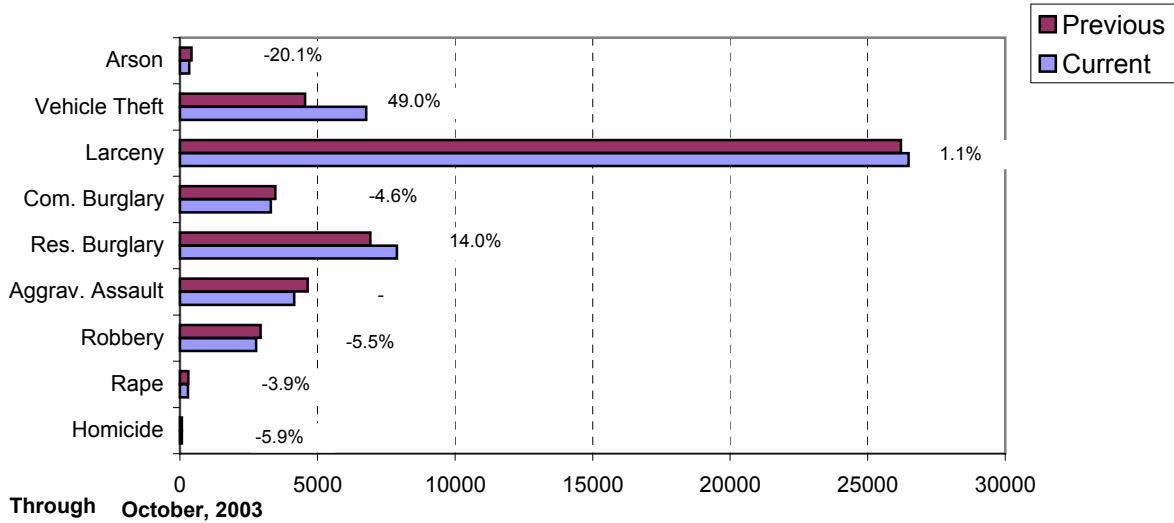


Index Offenses Year-to-Date Cumulative Totals Charlotte-Mecklenburg Police Department: 2002-2003

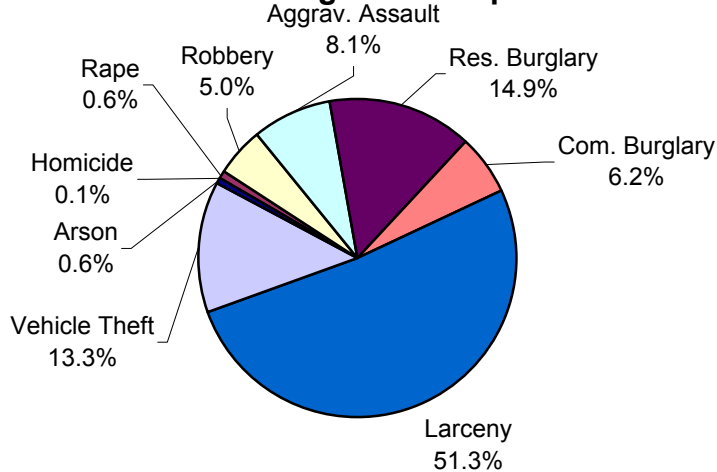


Through October, 2003

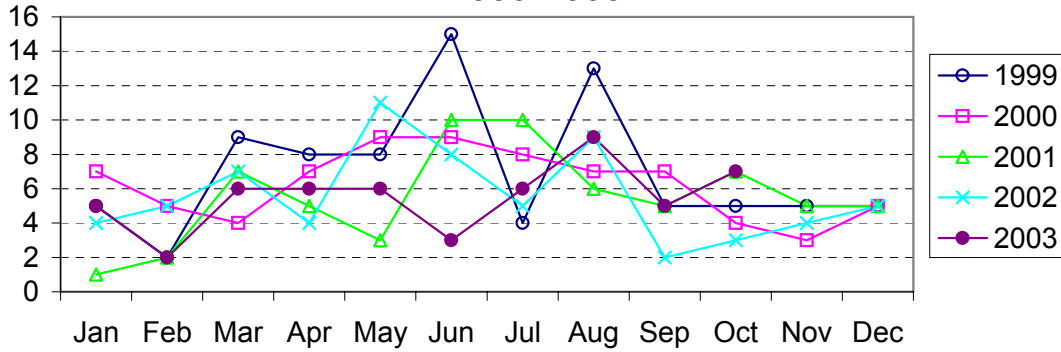
Index Offenses in Current and Previous 12 Months Charlotte-Mecklenburg Police Department: 2002-2003



Year-to-Date Index Offenses by Type Charlotte-Mecklenburg Police Department: 2003

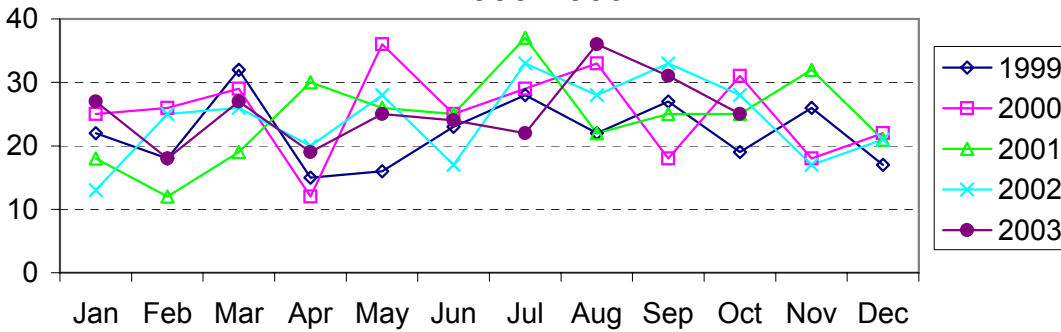


Homicide Reported by Month Charlotte-Mecklenburg Police Department: 1999-2003



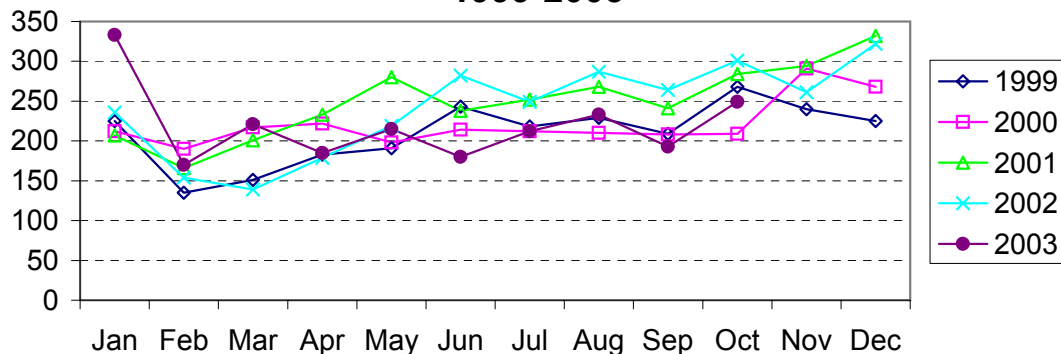
Through October, 2003

Rape Reported by Month Charlotte-Mecklenburg Police Department: 1999-2003



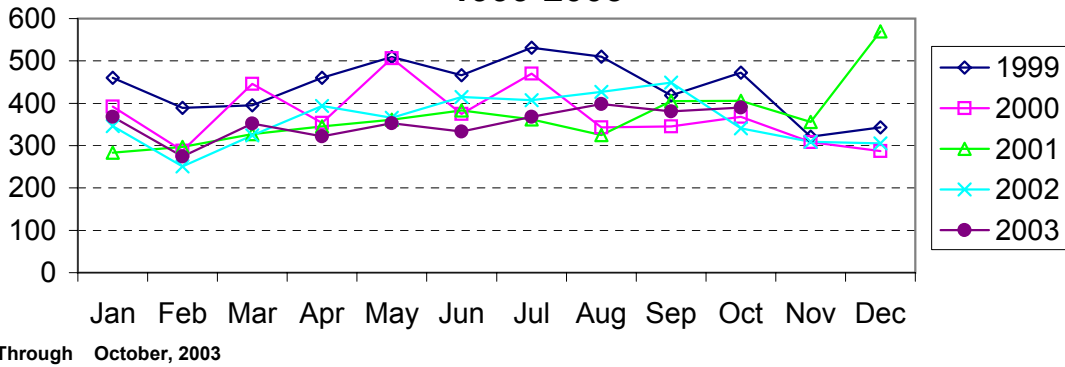
Through October, 2003

Robbery Reported by Month Charlotte-Mecklenburg Police Department: 1999-2003

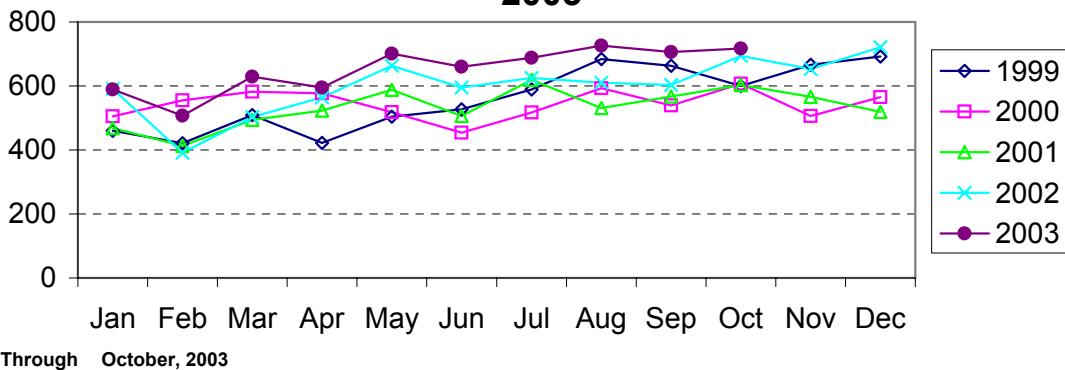


Through October, 2003

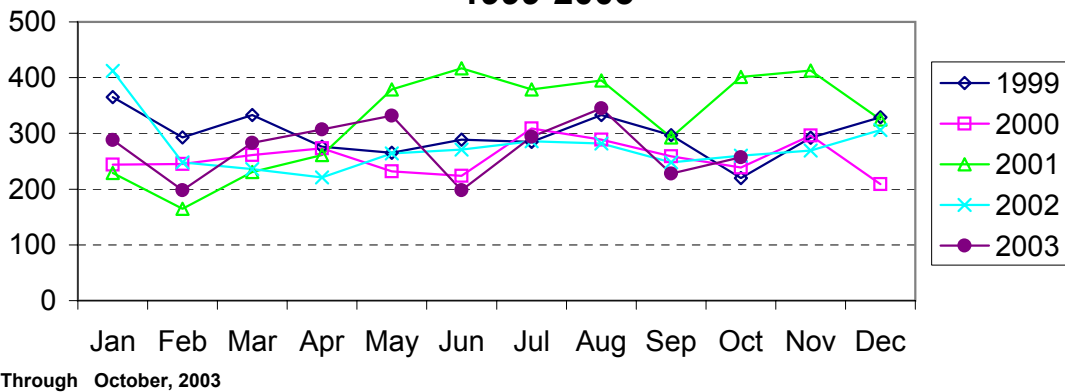
**Aggravated Assault Reported by Month
Charlotte-Mecklenburg Police Department:
1999-2003**



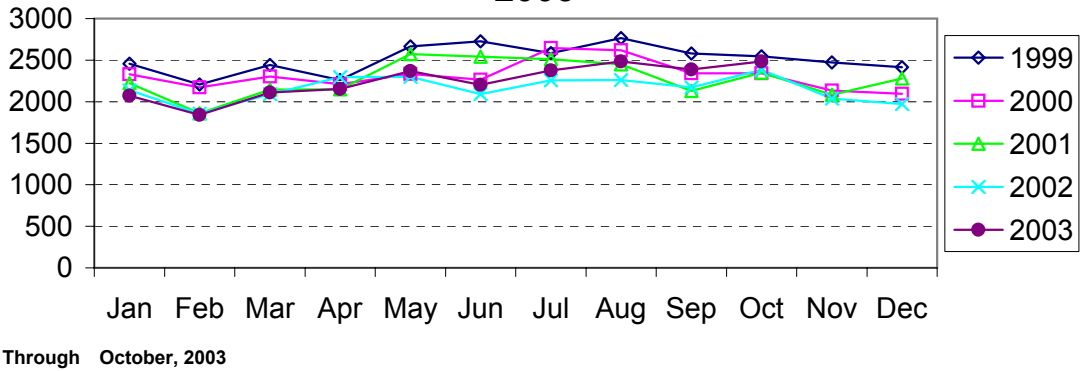
**Residential Burglary Reported by Month
Charlotte-Mecklenburg Police Department: 1999-
2003**



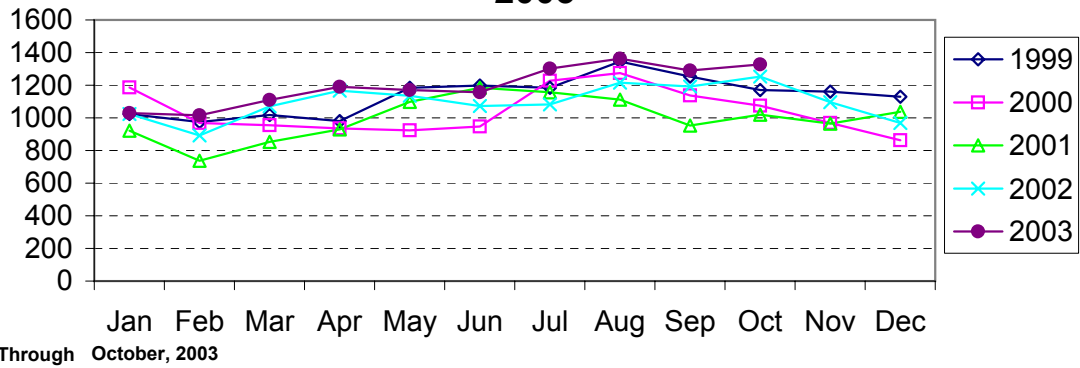
**Commercial Burglary Reported by Month
Charlotte-Mecklenburg Police Department:
1999-2003**



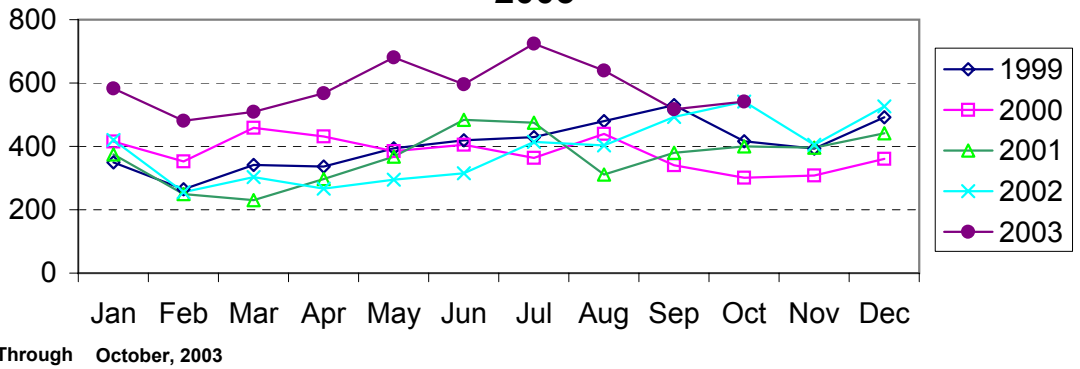
Larceny Reported by Month Charlotte-Mecklenburg Police Department: 1999. 2003



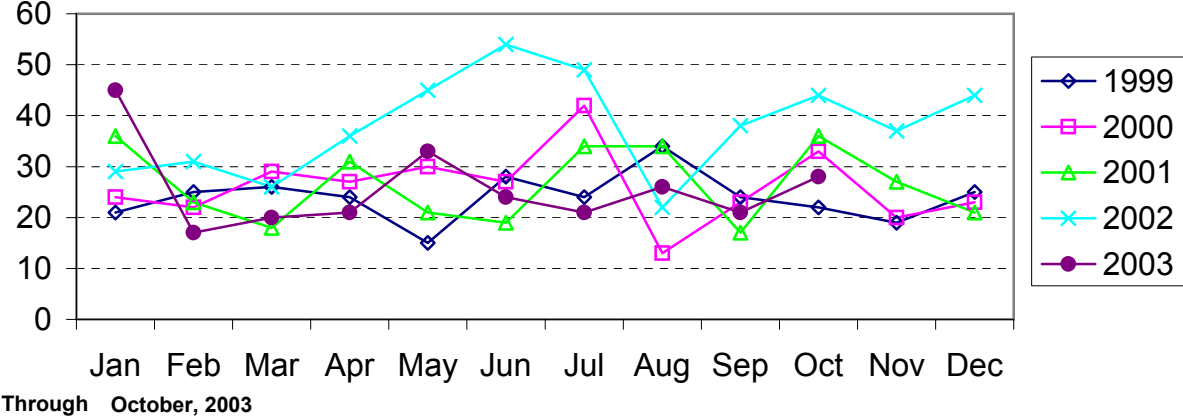
Larceny from Vehicle Reported by Month Charlotte-Mecklenburg Police Department: 1999. 2003



Vehicle Theft Reported by Month Charlotte-Mecklenburg Police Department: 1999. 2003



Arson Reported by Month Charlotte-Mecklenburg Police Department: 1999-2003



Index Offenses Reported by Division and Service Area of Occurrence									
West Service Area: Jan-Oct, 2002-2003									
INDEX_CATEGORIES	Westover (A2)			Freedom (A3)			West Service Area		
	2002	2003	% Change	2002	2003	% Change	2002	2003	% Change
MURDER & NON-NEGLIGENT MANSLAUGHTER	5	6	20.0%	3	9	200.0%	8	15	87.5%
RAPE	25	19	-24.0%	24	34	41.7%	49	53	8.2%
ACTUAL	22	18	-18.2%	20	28	40.0%	42	46	9.5%
ATTEMPTED	3	1	-66.7%	4	6	50.0%	7	7	0.0%
ROBBERY	204	186	-8.8%	243	211	-13.2%	447	397	-11.2%
ARMED	148	144	-2.7%	202	166	-17.8%	350	310	-11.4%
STRONG-ARM	56	42	-25.0%	41	45	9.8%	97	87	-10.3%
AGGRAVATED ASSAULT	340	344	1.2%	366	450	23.0%	706	794	12.5%
BURGLARY	618	714	15.5%	1031	1171	13.6%	1649	1885	14.3%
RESIDENTIAL	388	491	26.5%	605	796	31.6%	993	1287	29.6%
COMMERCIAL	230	223	-3.0%	426	375	-12.0%	656	598	-8.8%
LARCENY	1229	1202	-2.2%	1861	1987	6.8%	3090	3189	3.2%
FROM AUTO	575	618	7.5%	927	975	5.2%	1502	1593	6.1%
BICYCLE	14	7	-50.0%	9	13	44.4%	23	20	-13.0%
SHOPLIFTING	158	113	-28.5%	208	164	-21.2%	366	277	-24.3%
OTHERS	482	464	-3.7%	717	835	16.5%	1199	1299	8.3%
VEHICLE THEFT	279	398	42.7%	469	676	44.1%	748	1074	43.6%
ARSON	17	18	5.9%	42	31	-26.2%	59	49	-16.9%
TOTALS	2717	2887	6.3%	4039	4569	13.1%	6756	7456	10.4%
VIOLENT	574	555	-3.3%	636	704	10.7%	1210	1259	4.0%
PROPERTY	2143	2332	8.8%	3403	3865	13.6%	5546	6197	11.7%

Index Offenses Reported by Division and Service Area of Occurrence									
Southeast Service Area: Jan-Oct, 2002-2003									
INDEX_CATEGORIES	Providence (B1)			Independence (B3)			Southeast Service Area		
	2002	2003	% Change	2002	2003	% Change	2002	2003	% Change
MURDER & NON-NEGLIGENT MANSLAUGHTER	2	0	-100.0%	3	3	0.0%	5	3	-40.0%
RAPE	16	16	0.0%	21	27	28.6%	37	43	16.2%
ACTUAL	15	15	0.0%	16	24	50.0%	31	39	25.8%
ATTEMPTED	1	1	0.0%	5	3	-40.0%	6	4	-33.3%
ROBBERY	127	98	-22.8%	234	175	-25.2%	361	273	-24.4%
ARMED	99	76	-23.2%	192	150	-21.9%	291	226	-22.3%
STRONG-ARM	28	22	-21.4%	42	26	-38.1%	70	48	-31.4%
AGGRAVATED ASSAULT	170	171	0.6%	268	262	-2.2%	438	433	-1.1%
BURGLARY	630	704	11.7%	872	852	-2.3%	1502	1556	3.6%
RESIDENTIAL	418	444	6.2%	633	642	1.4%	1051	1086	3.3%
COMMERCIAL	212	260	22.6%	239	210	-12.1%	451	470	4.2%
LARCENY	1517	1493	-1.6%	2324	2393	3.0%	3841	3886	1.2%
FROM AUTO	673	694	3.1%	1339	1430	6.8%	2012	2124	5.6%
BICYCLE	15	14	-6.7%	23	36	56.5%	38	50	31.6%
SHOPLIFTING	225	163	-27.6%	258	199	-22.9%	483	362	-25.1%
OTHERS	604	622	3.0%	704	728	3.4%	1308	1350	3.2%
VEHICLE THEFT	180	274	52.2%	327	588	79.8%	507	862	70.0%
ARSON	16	12	-25.0%	54	30	-44.4%	70	42	-40.0%
TOTALS	2658	2768	4.1%	4103	4330	5.5%	6761	7098	5.0%
VIOLENT	315	285	-9.5%	526	467	-11.2%	841	752	-10.6%
PROPERTY	2343	2483	6.0%	3577	3863	8.0%	5920	6346	7.2%

The data in the district breakdowns does not include a small number of offenses in which the location of the offense was unknown or was entered without a valid tract assignment. Districts are not equal in geographic size, demographics, zoning/development, and other factors that influence the rate of crimes committed in an area. Therefore, the comparison of raw offense totals across districts is not advisable.

Index Offenses Reported by Division and Service Area of Occurrence									
Northeast Service Area: Jan-Oct, 2002-2003									
INDEX_CATEGORIES	North (C1)			Hickory Grove (C3)			Northeast Service Area		
	2002	2003	% Change	2002	2003	% Change	2002	2003	% Change
MURDER & NON-NEGLIGENT MANSLAUGHTER	5	4	-20.0%	4	6	50.0%	9	10	11.1%
RAPE	18	26	44.4%	28	22	-21.4%	46	48	4.3%
ACTUAL	15	23	53.3%	26	17	-34.6%	41	40	-2.4%
ATTEMPTED	3	3	0.0%	2	5	150.0%	5	8	60.0%
ROBBERY	175	165	-5.7%	223	216	-3.1%	398	381	-4.3%
ARMED	141	131	-7.1%	183	170	-7.1%	324	301	-7.1%
STRONG-ARM	33	34	3.0%	40	46	15.0%	73	80	9.6%
AGGRAVATED ASSAULT	294	290	-1.4%	343	352	2.6%	637	642	0.8%
BURGLARY	837	1056	26.2%	1005	938	-6.7%	1842	1994	8.3%
RESIDENTIAL	566	752	32.9%	752	708	-5.9%	1318	1460	10.8%
COMMERCIAL	271	304	12.2%	253	230	-9.1%	524	534	1.9%
LARCENY	3193	3345	4.8%	1810	1942	7.3%	5003	5287	5.7%
FROM AUTO	1740	1952	12.2%	955	1041	9.0%	2695	2993	11.1%
BICYCLE	14	10	-28.6%	18	25	38.9%	32	35	9.4%
SHOPLIFTING	398	291	-26.9%	171	194	13.5%	569	485	-14.8%
OTHERS	1041	1092	4.9%	666	682	2.4%	1707	1774	3.9%
VEHICLE THEFT	378	676	78.8%	375	702	87.2%	753	1378	83.0%
ARSON	30	31	3.3%	50	30	-40.0%	80	61	-23.8%
TOTALS	4930	5593	13.4%	3838	4208	9.6%	8768	9801	11.8%
VIOLENT	492	485	-1.4%	598	596	-0.3%	1090	1081	-0.8%
PROPERTY	4438	5108	15.1%	3240	3612	11.5%	7678	8720	13.6%

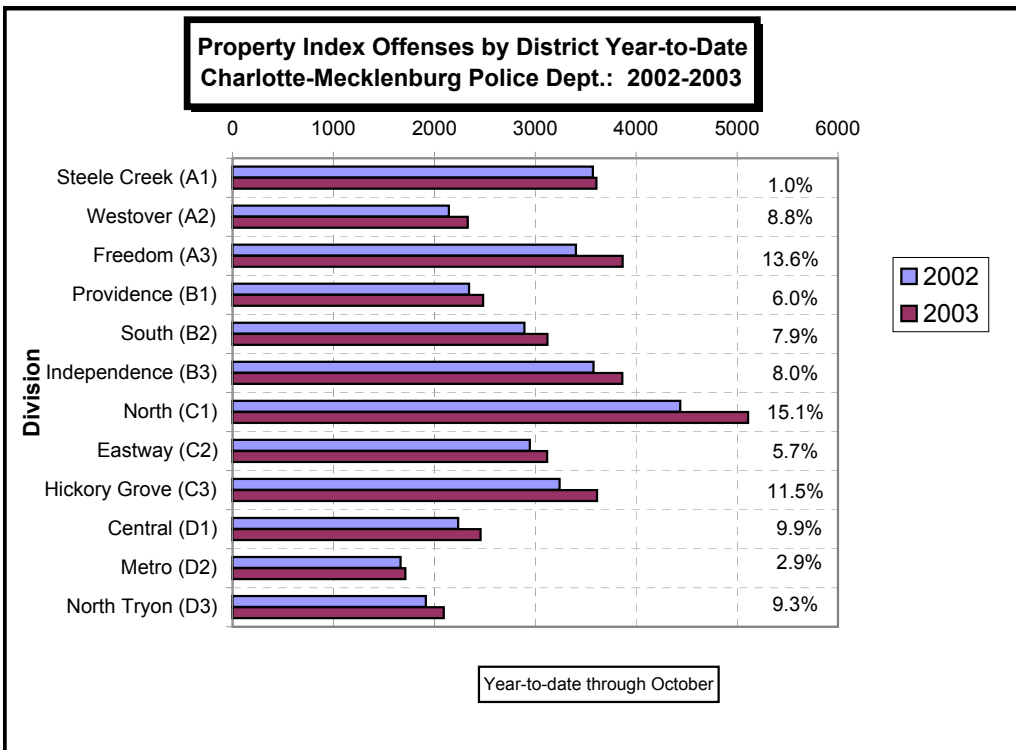
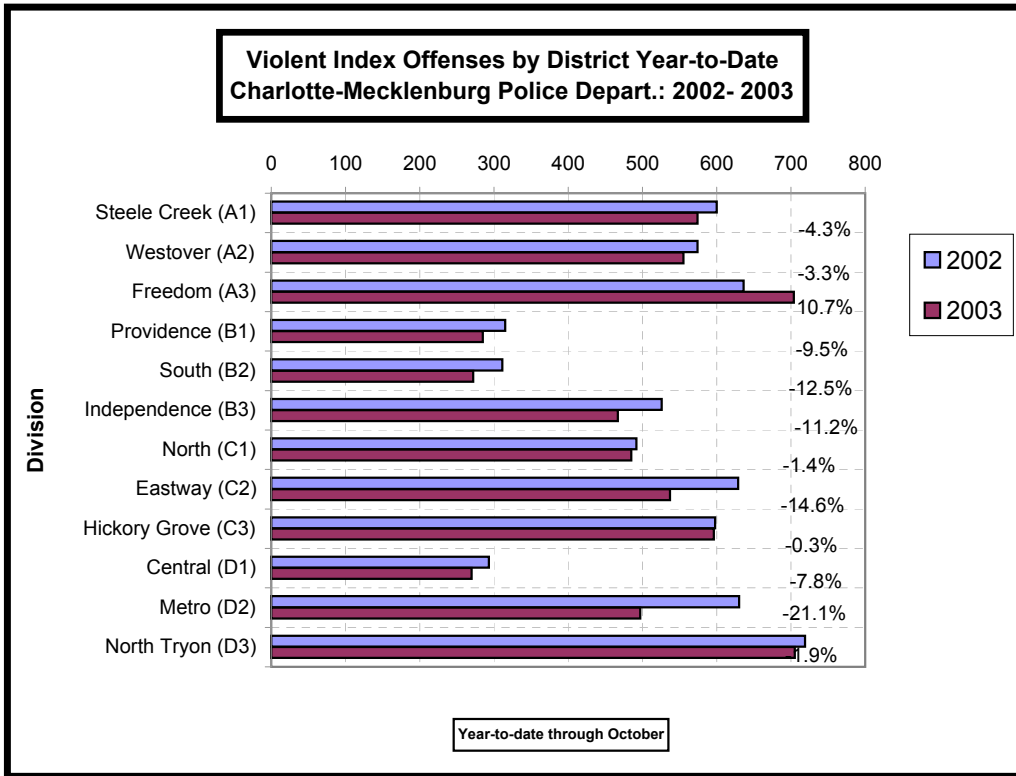
Index Offenses Reported by Division and Service Area of Occurrence									
Central Service Area: Jan-Oct, 2002-2003									
INDEX_CATEGORIES	Central (D1)			Metro (D2)			Central Service Area		
	2002	2003	% Change	2002	2003	% Change	2002	2003	% Change
MURDER & NON-NEGLIGENT MANSLAUGHTER	2	2	0.0%	12	5	-58.3%	14	7	-50.0%
RAPE	13	13	0.0%	15	18	20.0%	28	31	10.7%
ACTUAL	13	12	-7.7%	12	14	16.7%	25	26	4.0%
ATTEMPTED	0	1	NA	3	4	33.3%	3	5	66.7%
ROBBERY	132	103	-22.0%	178	147	-17.4%	310	250	-19.4%
ARMED	72	63	-12.5%	138	115	-16.7%	210	178	-15.2%
STRONG-ARM	60	40	-33.3%	40	32	-20.0%	100	72	-28.0%
AGGRAVATED ASSAULT	146	152	4.1%	425	327	-23.1%	571	479	-16.1%
BURGLARY	288	336	16.7%	521	460	-11.7%	809	796	-1.6%
RESIDENTIAL	133	182	36.8%	358	345	-3.6%	491	527	7.3%
COMMERCIAL	155	154	-0.6%	163	115	-29.4%	318	269	-15.4%
LARCENY	1774	1714	-3.4%	858	895	4.3%	2632	2609	-0.9%
FROM AUTO	939	1006	7.1%	434	513	18.2%	1373	1519	10.6%
BICYCLE	13	8	-38.5%	3	14	366.7%	16	22	37.5%
SHOPLIFTING	71	55	-22.5%	53	34	-35.8%	124	89	-28.2%
OTHERS	751	645	-14.1%	368	334	-9.2%	1119	979	-12.5%
VEHICLE THEFT	172	395	129.7%	258	345	33.7%	430	740	72.1%
ARSON	3	13	333.3%	28	14	-50.0%	31	27	-12.9%
TOTALS	2530	2728	7.8%	2295	2211	-3.7%	4825	4939	2.4%
VIOLENT	293	270	-7.8%	630	497	-21.1%	923	767	-16.9%
PROPERTY	2237	2458	9.9%	1665	1714	2.9%	3902	4172	6.9%

The data in the district breakdowns does not include a small number of offenses in which the location of the offense was unknown or was entered without a valid tract assignment. Districts are not equal in geographic size, demographics, zoning/development, and other factors that influence the rate of crimes committed in an area. Therefore, the comparison of raw offense totals across districts is not advisable.

Index Offenses Reported by Division and Service Area of Occurrence									
East Service Area: Jan-Oct, 2002-2003									
INDEX_CATEGORIES	Eastway (C2)			North Tryon (D3)			East Service Area		
	2002	2003	% Change	2002	2003	% Change	2002	2003	% Change
MURDER & NON-NEGLIGENT MANSLAUGHTER	1	3	200.0%	14	7	-50.0%	15	10	-33.3%
RAPE	26	16	-38.5%	18	16	-11.1%	44	32	-27.3%
ACTUAL	23	15	-34.8%	18	16	-11.1%	41	31	-24.4%
ATTEMPTED	3	1	-66.7%	0	0	NA	3	1	-66.7%
ROBBERY	269	266	-1.1%	241	274	13.7%	510	540	5.9%
ARMED	205	204	-0.5%	191	225	17.8%	396	429	8.3%
STRONG-ARM	64	62	-3.1%	50	49	-2.0%	114	111	-2.6%
AGGRAVATED ASSAULT	333	252	-24.3%	446	408	-8.5%	779	660	-15.3%
BURGLARY	811	774	-4.6%	484	631	30.4%	1295	1405	8.5%
RESIDENTIAL	642	572	-10.9%	305	412	35.1%	947	984	3.9%
COMMERCIAL	169	202	19.5%	179	219	22.3%	348	421	21.0%
LARCENY	1799	1890	5.1%	1039	996	-4.1%	2838	2886	1.7%
FROM AUTO	706	834	18.1%	484	522	7.9%	1190	1356	13.9%
BICYCLE	7	14	100.0%	10	11	10.0%	17	25	47.1%
SHOPLIFTING	519	464	-10.6%	106	66	-37.7%	625	530	-15.2%
OTHERS	567	578	1.9%	439	397	-9.6%	1006	975	-3.1%
VEHICLE THEFT	311	438	40.8%	366	457	24.9%	677	895	32.2%
ARSON	26	14	-46.2%	27	10	-63.0%	53	24	-54.7%
TOTALS	3576	3653	2.2%	2635	2799	6.2%	6211	6452	3.9%
VIOLENT	629	537	-14.6%	719	705	-1.9%	1348	1242	-7.9%
PROPERTY	2947	3116	5.7%	1916	2094	9.3%	4863	5210	7.1%

Index Offenses Reported by Division and Service Area of Occurrence									
South Service Area: Jan-Oct, 2002-2003									
INDEX_CATEGORIES	Steele Creek (A1)			South (B2)			South Service Area		
	2002	2003	% Change	2002	2003	% Change	2002	2003	% Change
MURDER & NON-NEGLIGENT MANSLAUGHTER	5	6	20.0%	2	3	50.0%	7	9	28.6%
RAPE	32	23	-28.1%	14	21	50.0%	46	44	-4.3%
ACTUAL	28	18	-35.7%	12	18	50.0%	40	36	-10.0%
ATTEMPTED	4	5	25.0%	2	3	50.0%	6	8	33.3%
ROBBERY	182	226	24.2%	101	101	0.0%	283	327	15.5%
ARMED	144	174	20.8%	76	75	-1.3%	220	249	13.2%
STRONG-ARM	38	42	10.5%	25	26	4.0%	63	68	7.9%
AGGRAVATED ASSAULT	381	319	-16.3%	194	147	-24.2%	575	466	-19.0%
BURGLARY	717	738	2.9%	705	769	9.1%	1422	1507	6.0%
RESIDENTIAL	462	505	9.3%	547	606	10.8%	1009	1111	10.1%
COMMERCIAL	255	233	-8.6%	158	163	3.2%	413	396	-4.1%
LARCENY	2461	2351	-4.5%	1919	2008	4.6%	4380	4359	-0.5%
FROM AUTO	1260	1119	-11.2%	1045	1110	6.2%	2305	2229	-3.3%
BICYCLE	13	17	30.8%	16	15	-6.3%	29	32	10.3%
SHOPLIFTING	371	358	-3.5%	158	135	-14.6%	529	493	-6.8%
OTHERS	817	857	4.9%	700	748	6.9%	1517	1605	5.8%
VEHICLE THEFT	359	493	37.3%	227	325	43.2%	586	818	39.6%
ARSON	35	25	-28.6%	42	20	-52.4%	77	45	-41.6%
TOTALS	4172	4181	0.2%	3204	3394	5.9%	7376	7575	2.7%
VIOLENT	600	574	-4.3%	311	272	-12.5%	911	846	-7.1%
PROPERTY	3572	3607	1.0%	2893	3122	7.9%	6465	6729	4.1%

The data in the district breakdowns does not include a small number of offenses in which the location of the offense was unknown or was entered without a valid tract assignment. Districts are not equal in geographic size, demographics, zoning/development, and other factors that influence the rate of crimes committed in an area. Therefore, the comparison of raw offense totals across districts is not advisable.



The data in the district breakdowns does not include a small number of offenses in which the location of the offense was unknown or was entered without a valid tract assignment. Districts are not equal in geographic size, demographics, zoning/development, and other factors that influence the rate of crimes committed in an area. Therefore, the comparison of raw offense totals across districts is not advisable.

Arrests by Charlotte-Mecklenburg Police Department
Year-To-Date: 2002-2003
(Through October)

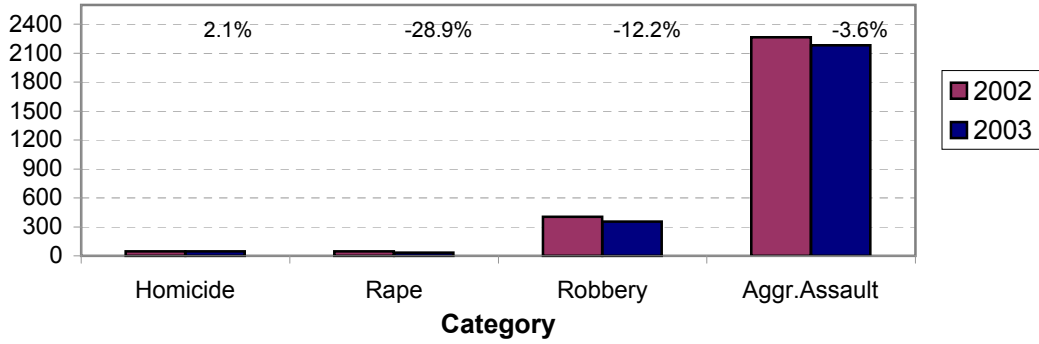
CATEGORY	ADULTS (AGE 18 & OLDER):			JUVENILES (UNDER 18):			TOTAL ARRESTS:		
	2002 Y-T-D	2003 Y-T-D	% CHANGE	2002 Y-T-D	2003 Y-T-D	% CHANGE	2002 Y-T-D	2003 Y-T-D	% CHANGE
Murder/Non-Negligent Manslaughter	46	42	-8.7%	1	6	500.0%	47	48	2.1%
Negligent & Vehicular Manslaughter	5	1	-80.0%	0	0	NA	5	1	-80.0%
Rape	41	26	-36.6%	4	6	50.0%	45	32	-28.9%
Robbery	293	253	-13.7%	110	101	-8.2%	403	354	-12.2%
Aggravated Assault	1992	1876	-5.8%	273	307	12.5%	2265	2183	-3.6%
Burglary	412	415	0.7%	201	197	-2.0%	613	612	-0.2%
Larceny	1307	1246	-4.7%	546	544	-0.4%	1853	1790	-3.4%
Vehicle Theft	99	130	31.3%	119	316	165.5%	218	446	104.6%
Non-Aggravated Assault	1456	1439	-1.2%	635	738	16.2%	2091	2177	4.1%
Arson	18	17	-5.6%	36	20	-44.4%	54	37	-31.5%
Forgery/Counterfiet	115	105	-8.7%	1	4	300.0%	116	109	-6.0%
Fraud	565	463	-18.1%	7	8	14.3%	572	471	-17.7%
Embezzlement	109	86	-21.1%	10	4	-60.0%	119	90	-24.4%
Stolen Property	421	446	5.9%	102	127	24.5%	523	573	9.6%
Vandalism	214	210	-1.9%	151	173	14.6%	365	383	4.9%
Weapons	417	404	-3.1%	49	58	18.4%	466	462	-0.9%
Prostitution	189	306	61.9%	5	3	-40.0%	194	309	59.3%
Sex Offenses	229	204	-10.9%	31	40	29.0%	260	244	-6.2%
Drugs	2506	2654	5.9%	237	256	8.0%	2743	2910	6.1%
Gambling	3	22	633.3%	0	0	NA	3	22	633.3%
Offenses vs. Family	26	9	-65.4%	0	0	NA	26	9	-65.4%
DUI	2018	1715	-15.0%	14	9	-35.7%	2032	1724	-15.2%
Liquor	235	154	-34.5%	11	13	18.2%	246	167	-32.1%
Disorder Conduct	457	487	6.6%	142	249	75.4%	599	736	22.9%
Other Non-Traffic	6029	6332	5.0%	559	667	19.3%	6588	6999	6.2%
VIOLENT INDEX¹	2372	2197	-7.4%	388	420	8.2%	2760	2617	-5.2%
PROPERTY INDEX²	1836	1808	-1.5%	902	1077	19.4%	2738	2885	5.4%
INDEX SUBTOTAL	4208	4005	-4.8%	1290	1497	16.0%	5498	5502	0.1%
PART 2 SUBTOTAL³	14994	15037	0.3%	1954	2349	20.2%	16948	17386	2.6%
TOTAL	19202	19042	-0.8%	3244	3846	18.6%	22446	22888	2.0%

¹Violent Index includes murder and non-negligent manslaughter, rape, robbery, and aggravated assault.

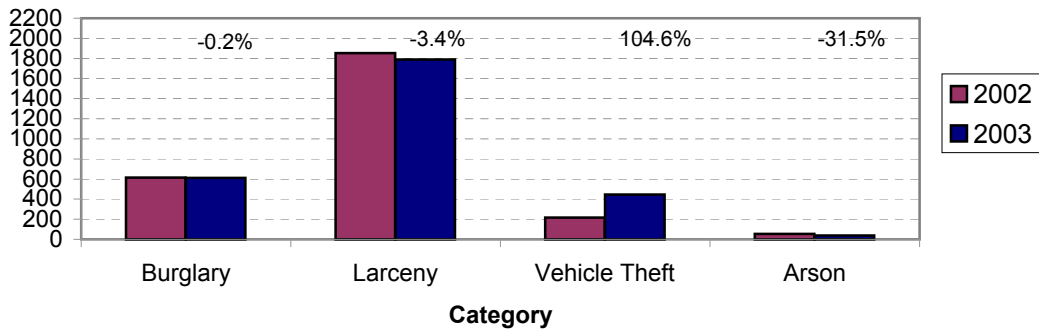
²Property Index includes burglary, larceny, vehicle theft, and arson.

³Part 2 crimes include non-traffic crimes not counted in the Index totals.

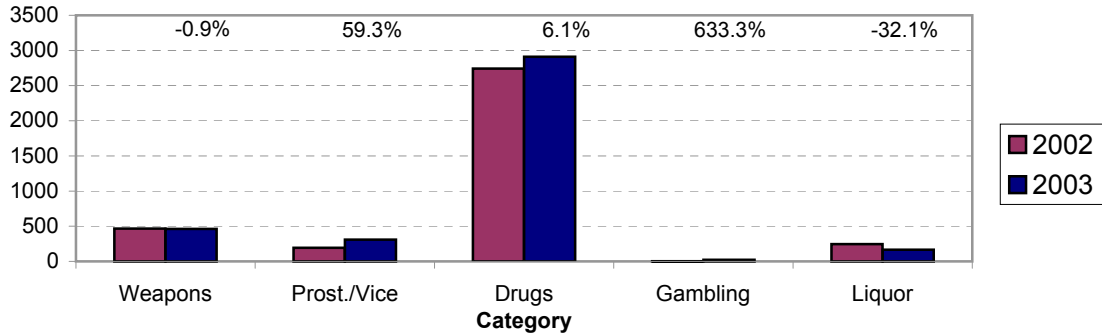
**Violent Index Arrests Year-to-Date
Charlotte-Mecklenburg Police Department: 2002-2003
(Through October)**



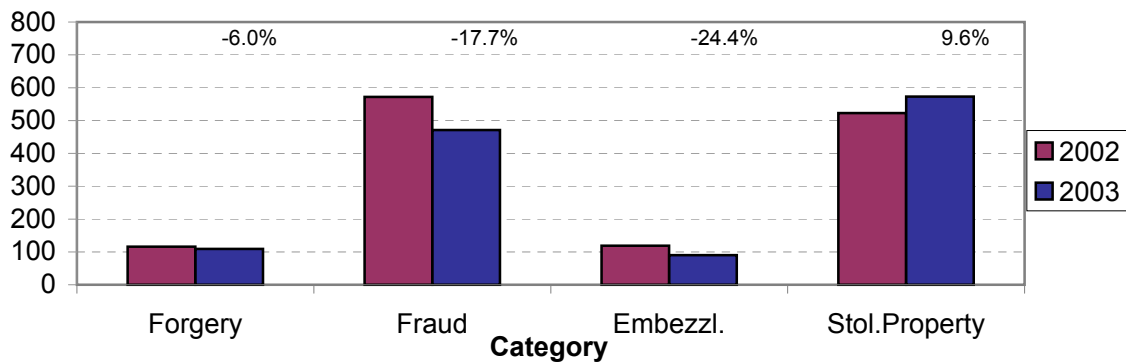
**Property Index Arrests Year-to-Date
Charlotte-Mecklenburg Police Department: 2002-2003
(Through October)**



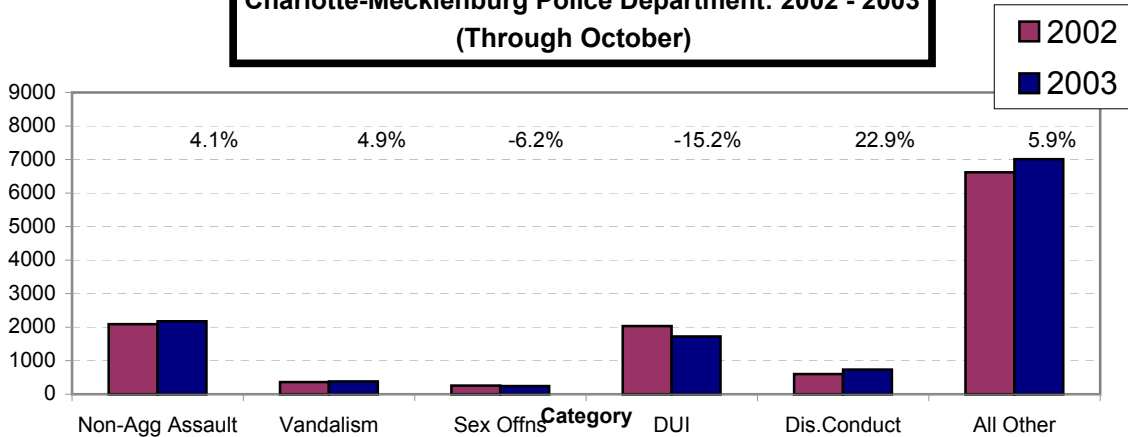
**Arrests for Vice/CCW/Drugs/Etc. Year-to-Date
Charlotte-Mecklenburg Police Department: 2002 - 2003
(Through October)**



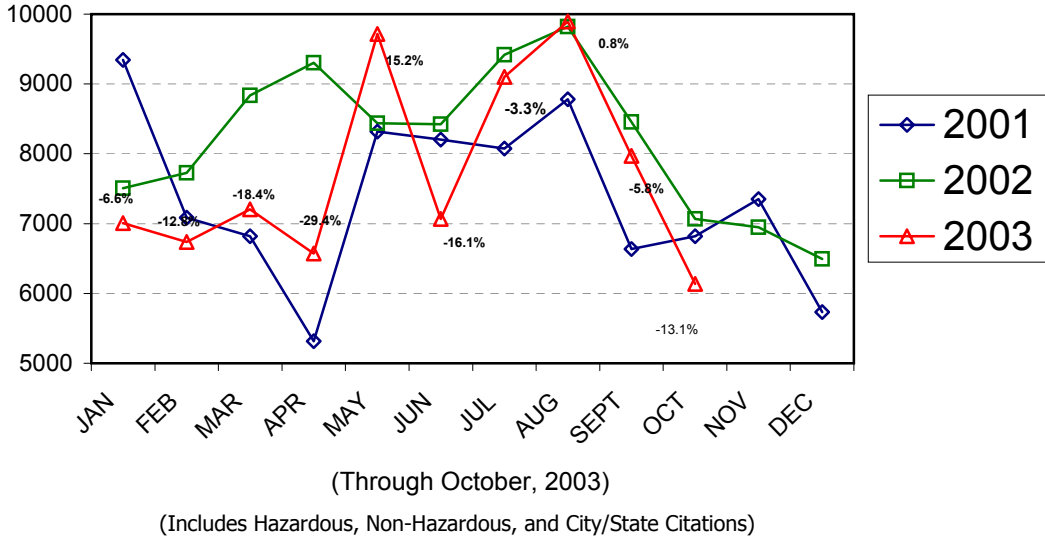
**Arrests for Property/White Collar Crime Year-to-Date
Charlotte-Mecklenburg Police Department: 2002 - 2003
(Through October)**



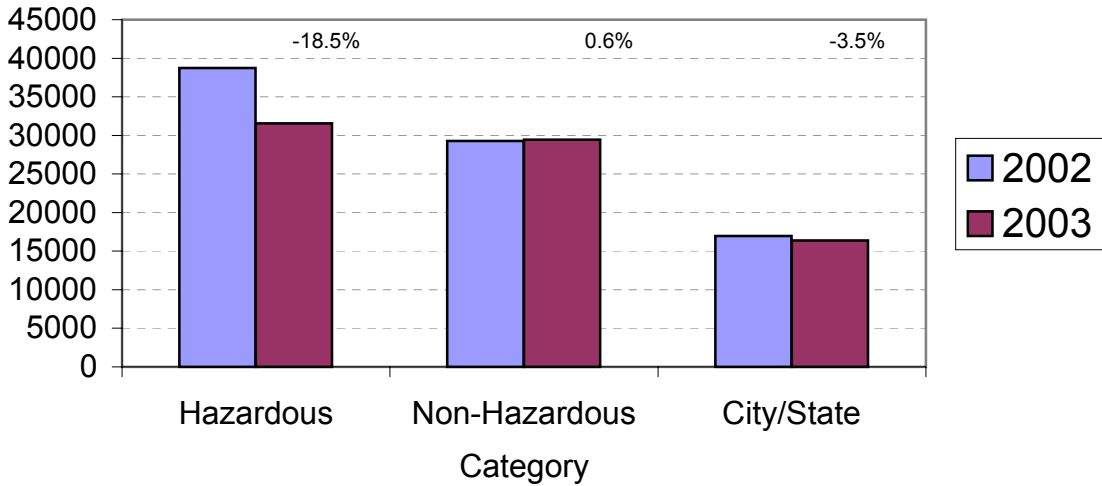
**Arrests for Other Categories Year-to-Date
Charlotte-Mecklenburg Police Department: 2002 - 2003
(Through October)**



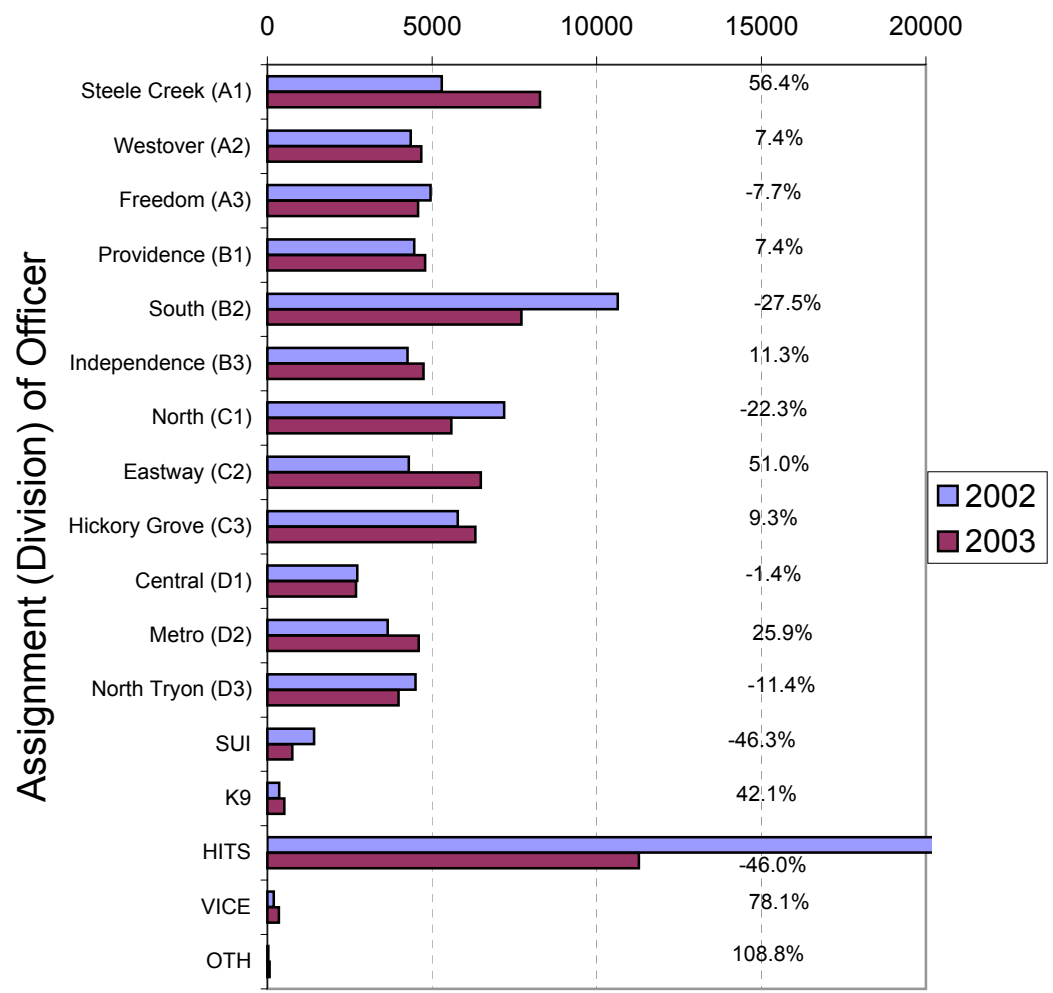
**Total Citation Enforcement by Month
Charlotte-Mecklenburg Police Dept.: 2001-2003**



**CMPD Citation Enforcement by Category
Year-to-Date, 2002 - 2003
(Through October, 2003)**



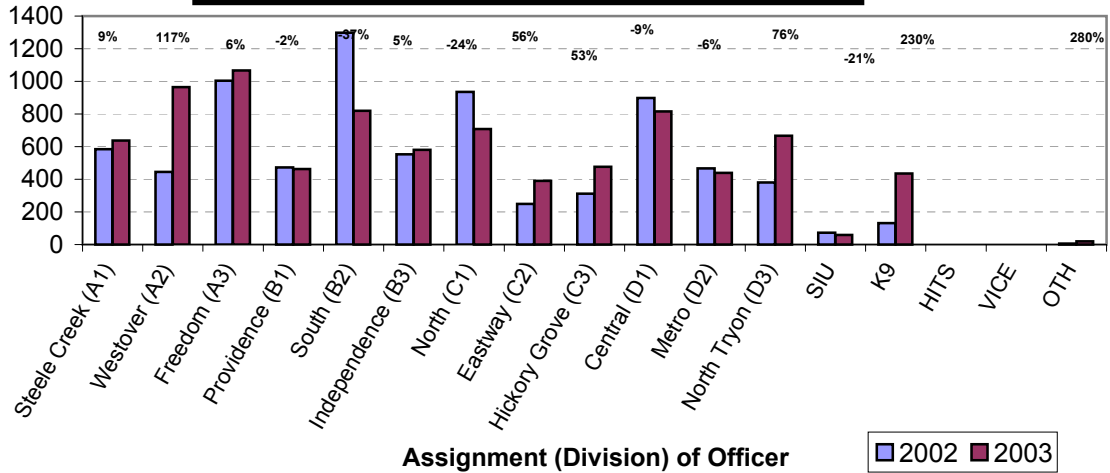
**Citations Issued Year-to-Date by CMPD Divisions
2002 - 2003
(Through October, 2003)**



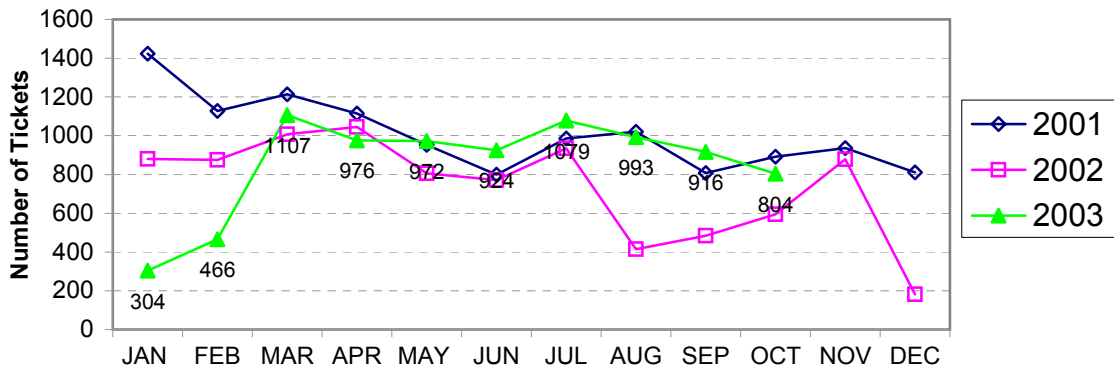
**Citations Issued by the Charlotte Mecklenburg Police Dept. Year-to-Date
(Through October, 2003)**

Total Citations	2002	2003	% Change
Hazardous	38,756	31,574	-18.5%
Non-Hazardous	29,270	29,458	0.6%
Other City/State Statute/Ordinance	16,967	16,377	-3.5%
Total	84,993	77,409	-8.9%

**Warning Tickets Issued by CMPD Division
Year-to-Date, 2002 - 2003
Through October, 2003**



**Total Warning Tickets Issued by CMPD
By Month: 2001 - 2003**



**Warning Tickets Issued by CMPD Year-to-Date
Through October, 2003**

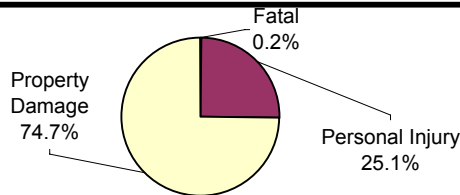
	2002	2003	% Change
Total Warning Tickets	7811	8541	9.3%

Traffic Collison Reports
Charlotte-Mecklenburg Police Department
Year-to-Date: 2002-2003
(Through October)

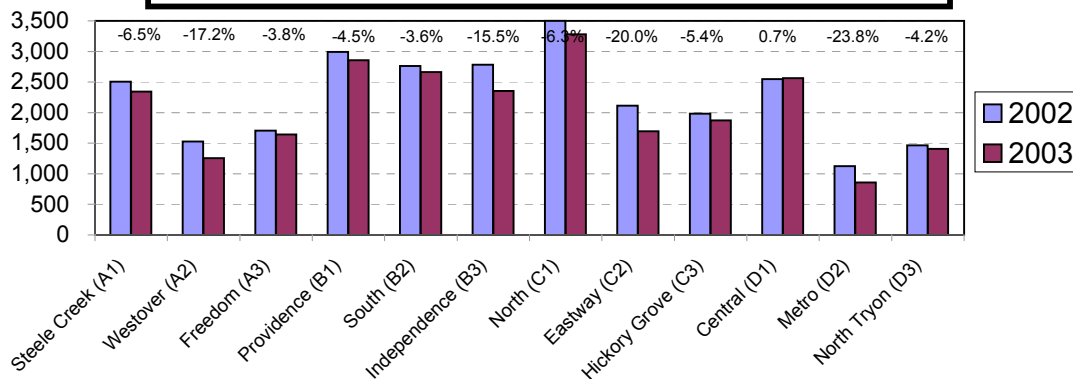
<u>Type</u>	<u>2002</u>	<u>2003</u>	<u>% Change</u>
Fatal Collisions	52	44	-15.4%
Vehicle Occupants Killed	41	44	7.3%
Pedestrians Killed	12	5	-58.3%
Personal Injury Collisions	6562	6228	-5.2%
Property Damage Collisions	20408	18648	-8.6%
Total Collisions	27022	24920	-7.8%

* The number of fatal collisions and the number of persons killed in those incidents is taken from the HITS file. Their records are updated for deaths that occur after the initial report is filed.

Traffic Collisions Reported by Type
Charlotte-Mecklenburg Police Department:
2003 Year-to-Date
(Through October)



Traffic Collisions Reported by Charlotte-Mecklenburg Police Dept.
Year-to-Date By Location (Division) : 2002 -2003
(Through October)



Uniform Crime Reporting Procedures:

The Charlotte-Mecklenburg Police Department reports offense and arrest statistics in accordance with standard Uniform Crime Reporting (UCR) guidelines. UCR policy states that any adjustments to previous months can be made on the current month's report:

...In tabulating crime counts, an agency may find that offense totals for past months require adjustments due to developments in the investigation or other handling of the matter. It may be necessary to adjust totals reported to UCR for the past month or prior months. Needed adjustments can be made on the current month's report and do not affect the reliability of the figures in that such adjustments tend to equalize each other from month to month over a period of time.

- *Uniform Crime Reporting Handbook*, FBI, 1984, p. 42-43

We are required to report crime monthly to the UCR program, and we do therefore make an effort to process monthly changes in a timely manner. However, occasionally due to the review and processing required for reclassifying, unfounding or clearing cases, the current month's totals may reflect the processing of a backlog of these changes from previous months.

Users of the data are cautioned that conclusions about substantial changes in crime trends or in clearance rates based on only a single month's data or trend may reflect some of these adjustments. For this reason, in addition to the monthly and year-to-date trends on Page 1, the monthly report routinely includes a comparison for the previous 12 months (p. 4), as well as graphs that provide seasonal/monthly comparisons over a five-year period (p. 5-8).

We do make an effort to present the most accurate information available at the time this report is published. However, errors in compiling the data and charts do sometimes occur, so please notify the Research, Planning, and Analysis office if you have any questions about the data in this report.

The new division names are used in this report. For ease of use, they also include the old district designations in parentheses.

The chart formats for this report were revised with the assistance of Officer David Padgett, who converted a number of spreadsheets from old software into the newer Excel software.

V. L. Sorban
Research, Planning & Analysis Bureau