



**CHARLOTTE-MECKLENBURG POLICE DEPARTMENT
MONTHLY SUMMARY REPORT
MARCH, 2003**

**Darrel Stephens
Chief of Police**

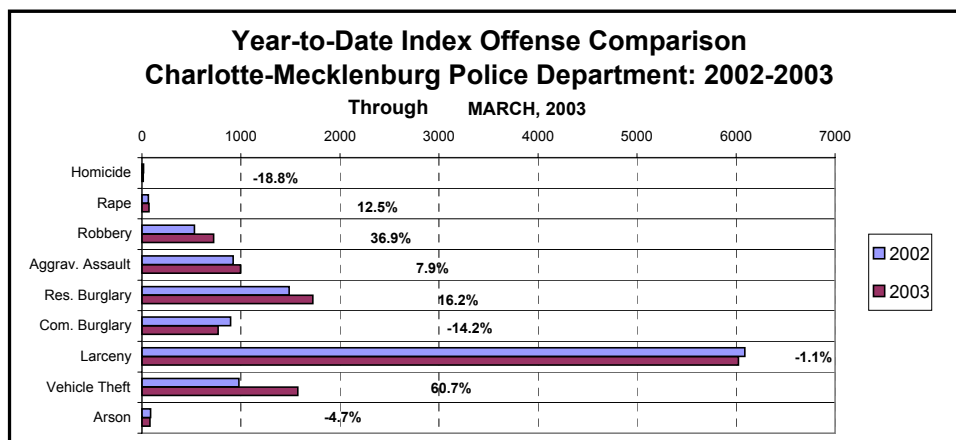
INDEX OFFENSES REPORTED TO CHARLOTTE-MECKLENBURG POLICE DEPARTMENT

March, 2003 INDEX OFFENSES	# THIS MONTH	% OF ALL INDEX	# LAST MONTH	MONTHLY % CHANGE	SAME MONTH LAST YEAR	MONTHLY % CHANGE	THIS YEAR TO DATE	LAST YEAR TO DATE	ANNUAL % CHANGE
HOMICIDE (MURDER & NON-NEGLIGENT MANSLAUGHTER)	6	0.1%	2	200.0%	7	-14.3%	13	16	-18.8%
RAPE TOTAL	27	0.6%	18	50.0%	26	3.8%	72	64	12.5%
ACTUAL	26	0.6%	16	62.5%	23	13.0%	68	57	19.3%
ATTEMPT	1	0.0%	2	-50.0%	3	-66.7%	4	7	-42.9%
ROBBERY TOTAL	221	5.3%	170	30.0%	139	59.0%	724	529	36.9%
ARMED	174	4.2%	119	46.2%	98	77.6%	561	422	32.9%
STRONG-ARM	47	1.1%	51	-7.8%	41	14.6%	163	107	52.3%
AGGRAVATED ASSAULT TOTAL	352	8.5%	274	28.5%	324	8.6%	994	921	7.9%
BURGLARY TOTAL	912	21.9%	705	29.4%	739	23.4%	2494	2381	4.7%
RESIDENTIAL	629	15.1%	507	24.1%	503	25.0%	1725	1485	16.2%
COMMERCIAL	283	6.8%	198	42.9%	236	19.9%	769	896	-14.2%

FORCE	736	17.7%	584	26.0%	550	33.8%	2030	1806	12.4%
NO FORCE	103	2.5%	81	27.2%	140	-26.4%	303	405	-25.2%
ATTEMPT	73	1.8%	40	82.5%	49	49.0%	161	170	-5.3%
LARCENY TOTAL	2111	50.8%	1841	14.7%	2093	0.9%	6024	6090	-1.1%
\$200 AND OVER	973	23.4%	943	3.2%	1019	-4.5%	2945	2928	0.6%
\$50 TO \$200	432	10.4%	303	42.6%	398	8.5%	1102	1147	-3.9%
UNDER \$50	706	17.0%	595	18.7%	676	4.4%	1977	2015	-1.9%

FROM AUTO	1109	26.7%	1016	9.2%	1071	3.5%	3155	2986	5.7%
BICYCLE	12	0.3%	2	500.0%	10	20.0%	23	31	-25.8%
SHOPLIFTING	243	5.8%	196	24.0%	256	-5.1%	647	802	-19.3%
OTHERS	747	18.0%	627	19.1%	756	-1.2%	2199	2271	-3.2%
VEHICLE THEFT TOTAL	509	12.2%	481	5.8%	303	68.0%	1573	979	60.7%
ARSON TOTAL	20	0.5%	17	17.6%	26	-23.1%	82	86	-4.7%
TOTALS	4158	100.0%	3508	18.5%	3657	13.7%	11976	11066	8.2%
VIOLENT PROPERTY	606	14.6%	464	30.6%	496	22.2%	1803	1530	17.8%
PROPERTY	3552	85.4%	3044	16.7%	3161	12.4%	10173	9536	6.7%

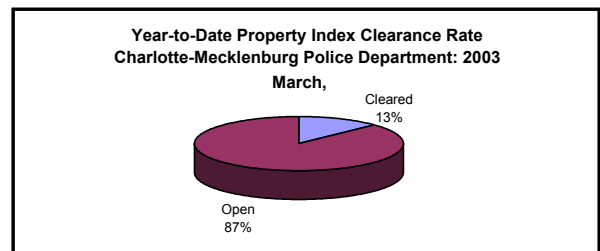
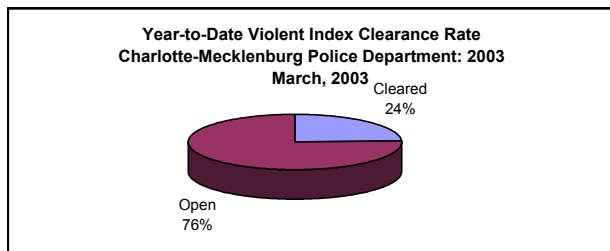
NOTE: These totals include offenses reported to the Charlotte-Mecklenburg Police Department in accordance with the Uniform Crime Reporting Program. Totals for homicide do not include cases investigated by the police but classed by UCR guidelines as negligent manslaughter or as "justifiable homicide."



INDEX CLEARANCES REPORTED BY THE CHARLOTTE-MECKLENBURG POLICE DEPARTMENT

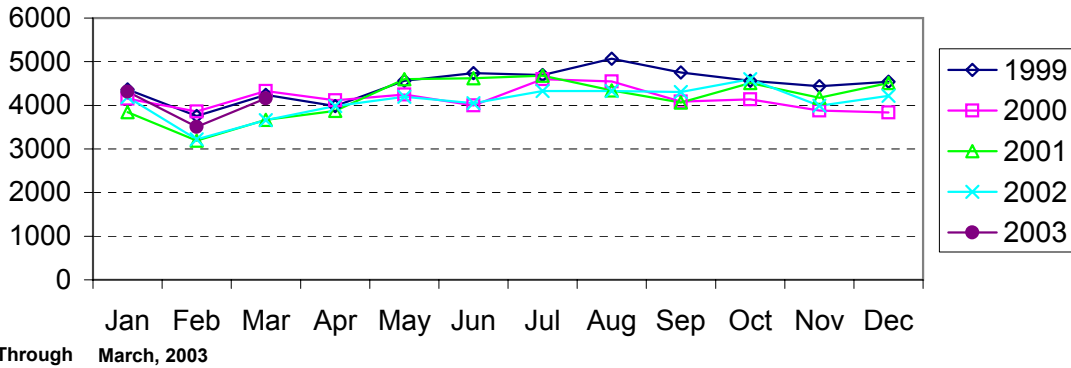
March, 2003 INDEX CLEARANCES	THIS MONTH:		LAST MONTH:		SAME MO. LAST YR:		THIS YEAR TO DATE:		LAST YEAR TO DATE:	
	NO.	%	NO.	%	NO.	%	NO.	%	NO.	%
MURDER & NON-NEGLIGENT MANSLAUGHTER	3	50.0%	1	50.0%	3	42.9%	8	61.5%	11	68.8%
RAPE TOTAL	16	59.3%	2	11.1%	5	19.2%	38	52.8%	22	34.4%
ACTUAL	16	61.5%	1	6.3%	5	21.7%	36	52.9%	21	36.8%
ATTEMPT	0	0.0%	1	50.0%	0	0.0%	2	50.0%	1	14.3%
ROBBERY TOTAL	32	14.5%	28	16.5%	27	19.4%	120	16.6%	136	25.7%
ARMED	21	12.1%	19	16.0%	19	19.4%	79	14.1%	112	26.5%
STRONG-ARM	11	23.4%	9	17.6%	8	19.5%	41	25.2%	24	22.4%
AGGRAVATED ASSAULT TOTAL	174	49.4%	82	29.9%	116	35.8%	498	50.1%	445	48.3%
BURGLARY TOTAL	120	13.2%	25	3.5%	60	8.1%	235	9.4%	286	12.0%
RESIDENTIAL	65	10.3%	19	3.7%	43	8.5%	152	8.8%	216	14.5%
COMMERCIAL	55	19.4%	6	3.0%	17	7.2%	83	10.8%	70	7.8%
LARCENY TOTAL	274	13.0%	162	8.8%	208	9.9%	753	12.5%	692	11.4%
FROM AUTO	39	3.5%	15	1.5%	20	1.9%	100	3.2%	65	2.2%
BICYCLE	1	8.3%	1	50.0%	1	10.0%	4	17.4%	5	16.1%
SHOPLIFTING	118	48.6%	104	53.1%	132	51.6%	355	54.9%	436	54.4%
OTHERS	116	15.5%	42	6.7%	55	7.3%	294	13.4%	186	8.2%
VEHICLE THEFT TOTAL	91	17.9%	70	14.6%	58	19.1%	277	17.6%	213	21.8%
ARSON TOTAL	9	45.0%	5	29.4%	7	26.9%	31	37.8%	33	38.4%
TOTALS	719	17.3%	375	10.7%	484	13.2%	1960	16.4%	1838	16.6%
VIOLENT PROPERTY	225	37.1%	113	24.4%	151	30.4%	664	36.8%	614	40.1%
	494	13.9%	262	8.6%	333	10.5%	1296	12.7%	1224	12.8%

NOTE: Clearances are reported in accordance with Uniform Crime Report guidelines. Since clearances are not counted until they are entered into the Records system, any delays in processing may result in some clearances being reported in succeeding months.

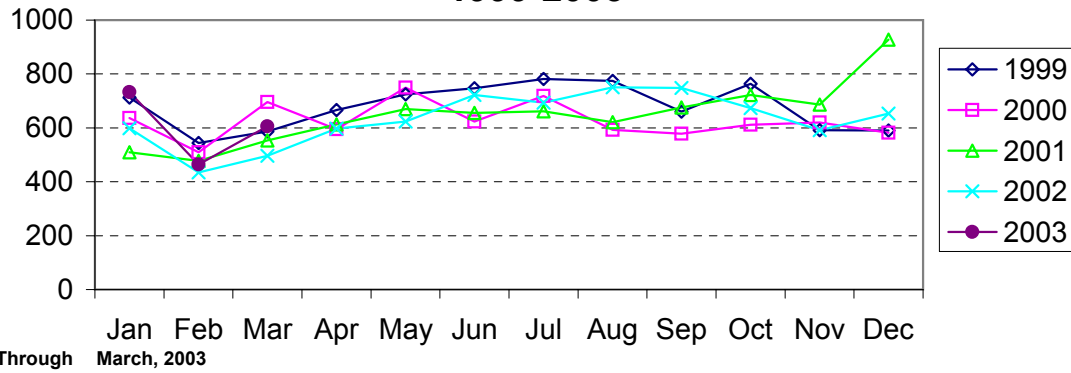


Clearance rates for crime reporting are calculated by dividing the number of crimes cleared during a designated time span by the number of crimes reported in the same period and converting the result to a percentage (multiplying by 100). Since cases from previous reporting periods can be cleared during the designated time span, the rate may be higher than 100%.

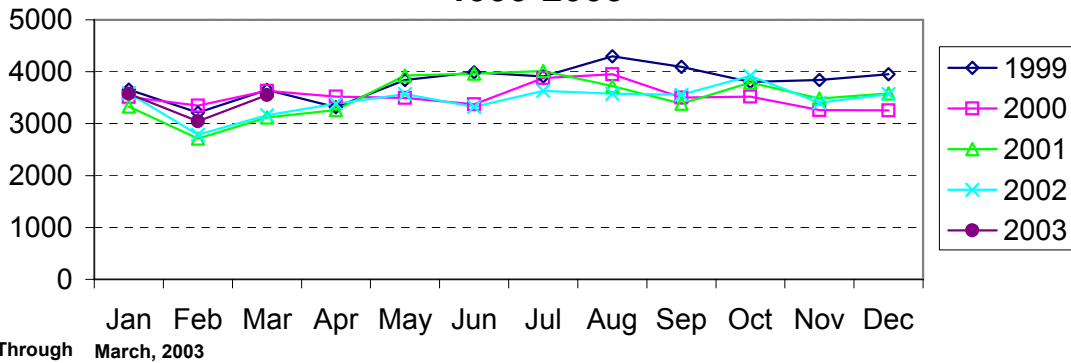
Index Offenses Reported by Month Charlotte-Mecklenburg Police Department: 1999-2003



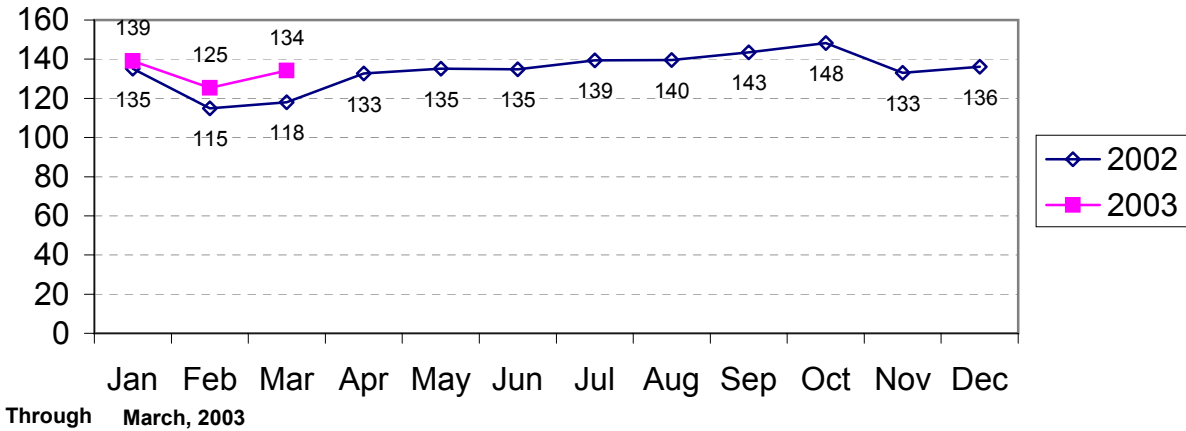
Violent Index Offenses Reported by Month Charlotte-Mecklenburg Police Department: 1999-2003



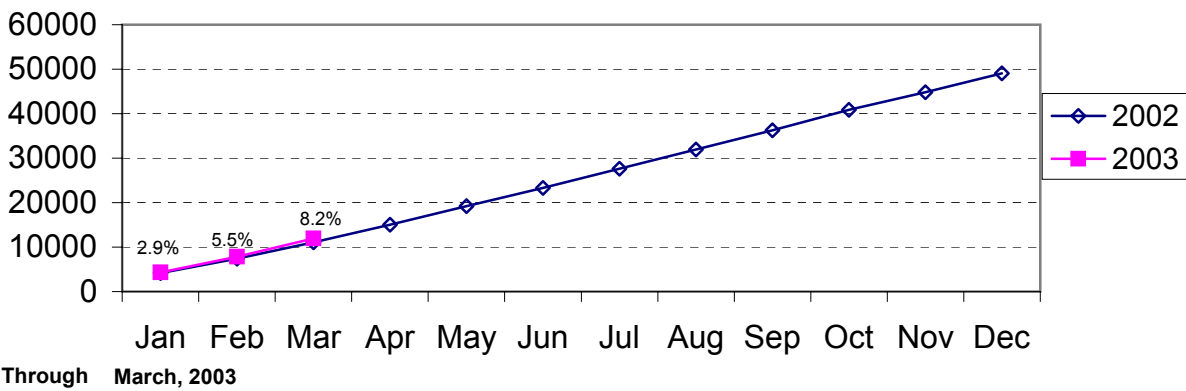
Property Index Offenses Reported by Month Charlotte-Mecklenburg Police Department: 1999-2003



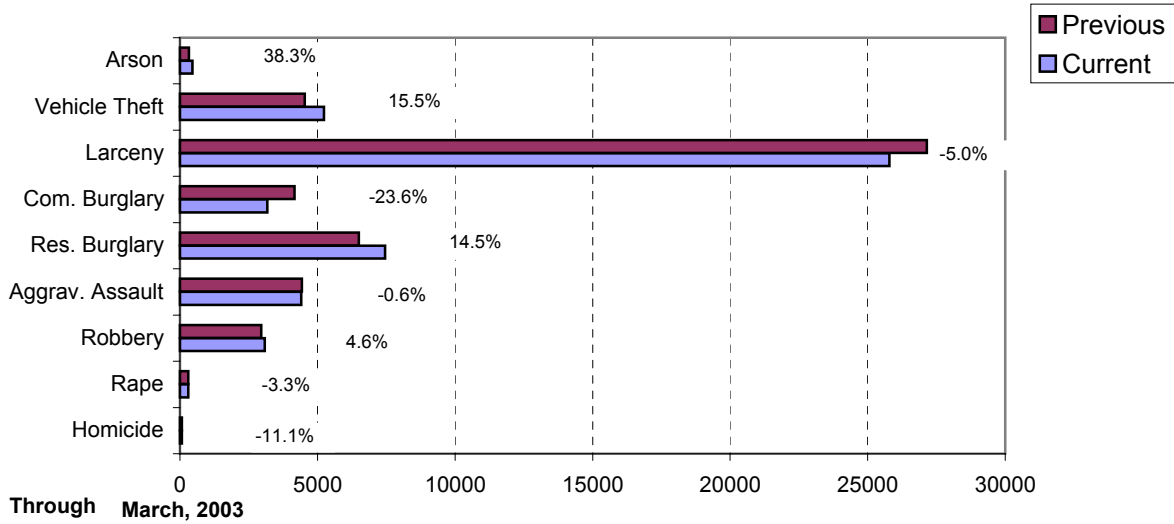
Index Offense Per Day Average by Month Charlotte-Mecklenburg Police Department: 2002-2003



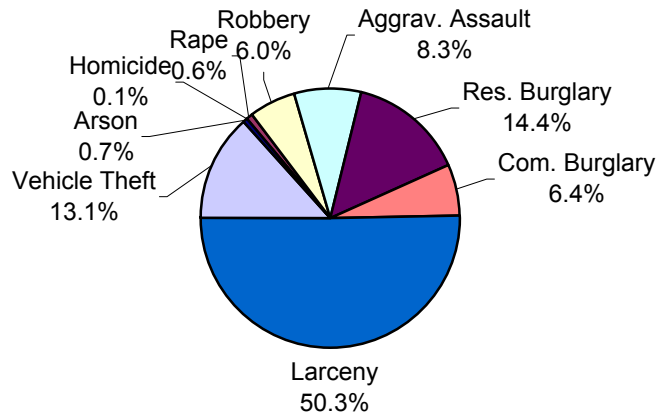
Index Offenses Year-to-Date Cumulative Totals Charlotte-Mecklenburg Police Department: 2002-2003



**Index Offenses in Current and Previous 12 Months
Charlotte-Mecklenburg Police Department:
2002-2003**

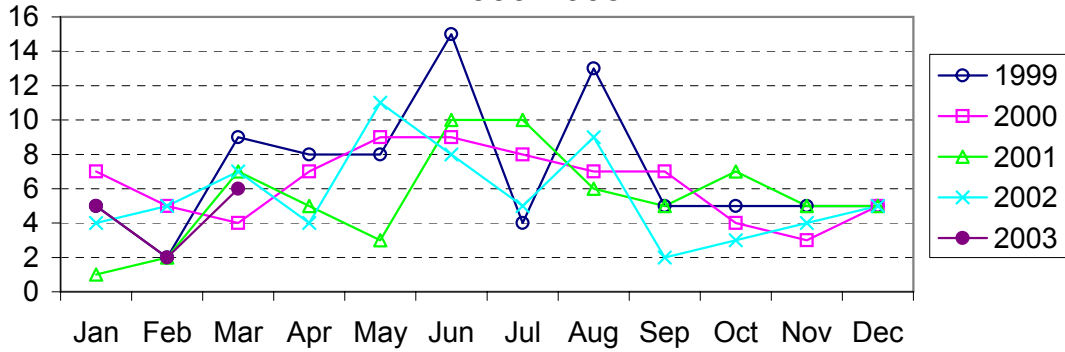


**Year-to-Date Index Offenses by Type
Charlotte-Mecklenburg Police Department: 2003**



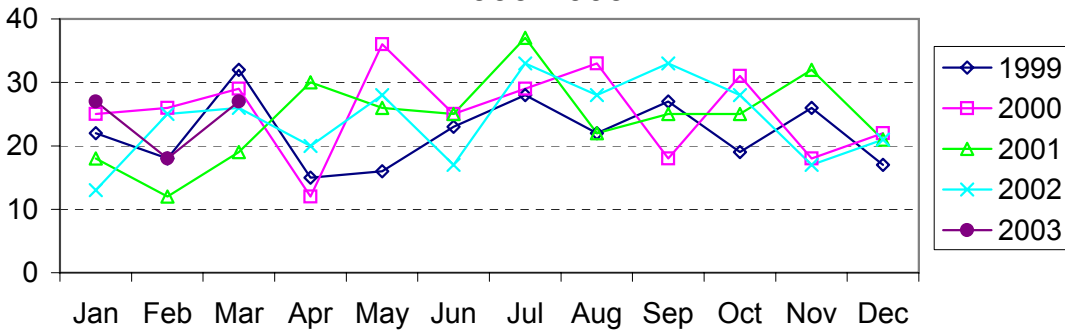
Through March, 2003

Homicide Reported by Month Charlotte-Mecklenburg Police Department: 1999-2003



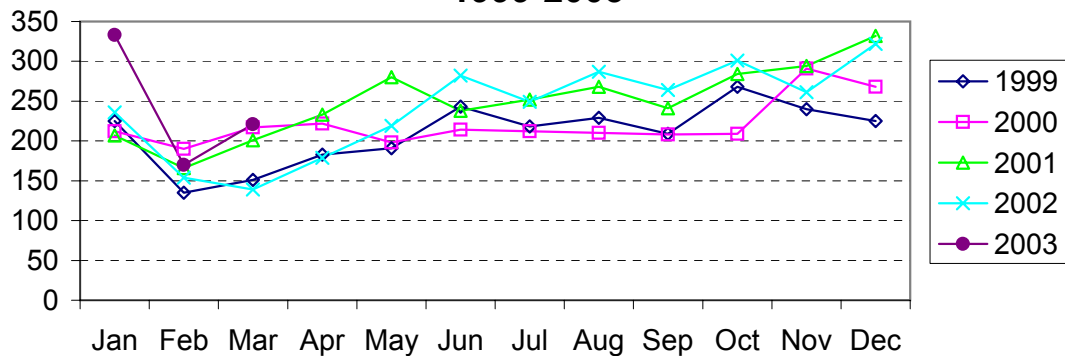
Through March, 2003

Rape Reported by Month Charlotte-Mecklenburg Police Department: 1999-2003



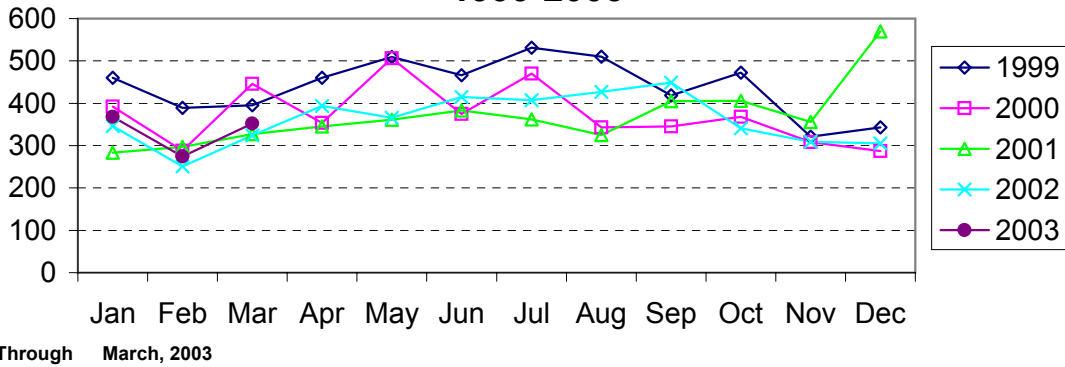
Through March, 2003

Robbery Reported by Month Charlotte-Mecklenburg Police Department: 1999-2003

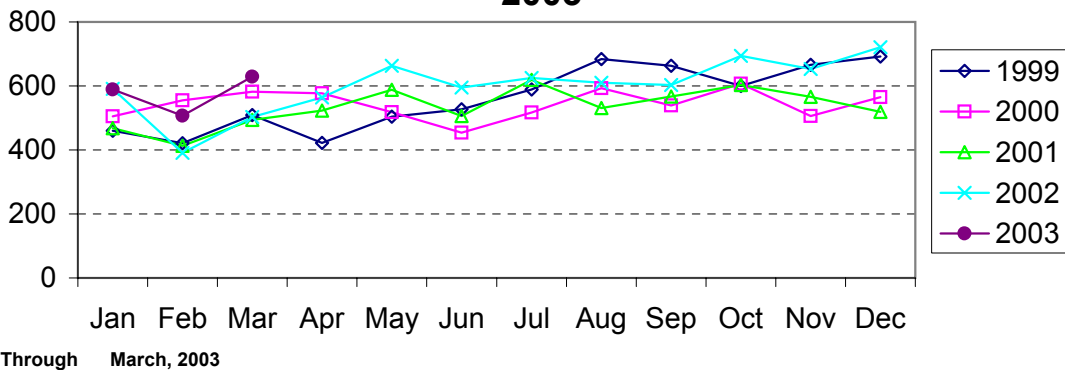


Through March, 2003

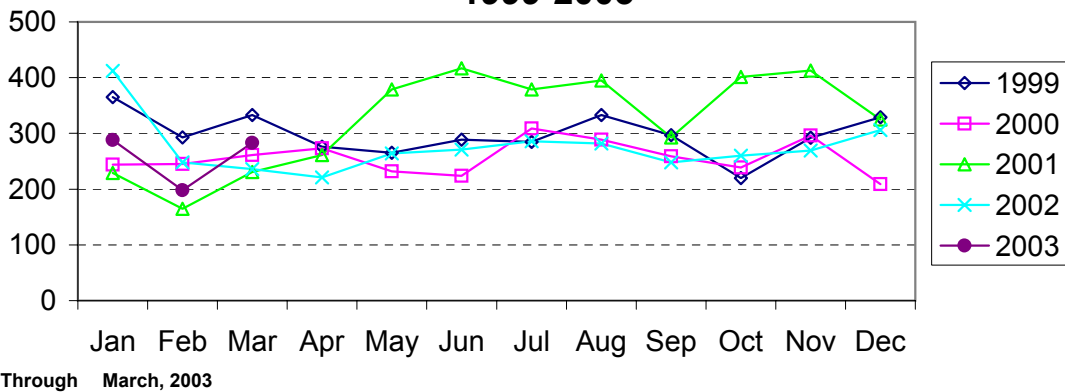
**Aggravated Assault Reported by Month
Charlotte-Mecklenburg Police Department:
1999-2003**



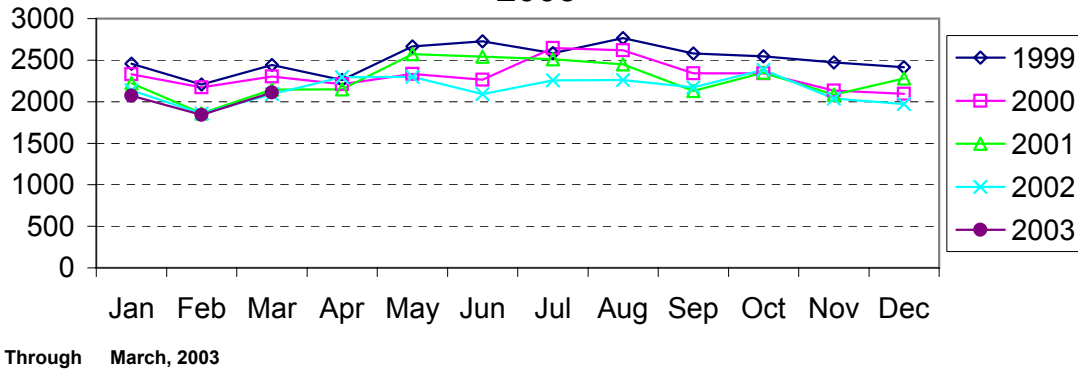
**Residential Burglary Reported by Month
Charlotte-Mecklenburg Police Department: 1999-
2003**



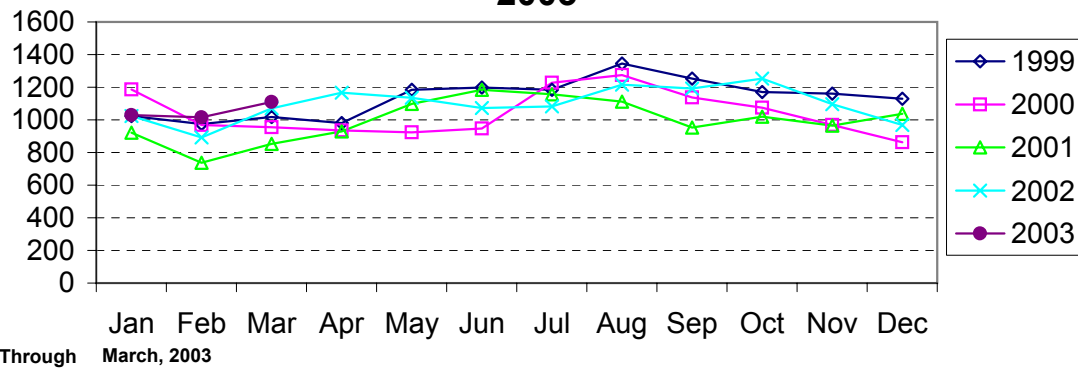
**Commercial Burglary Reported by Month
Charlotte-Mecklenburg Police Department:
1999-2003**



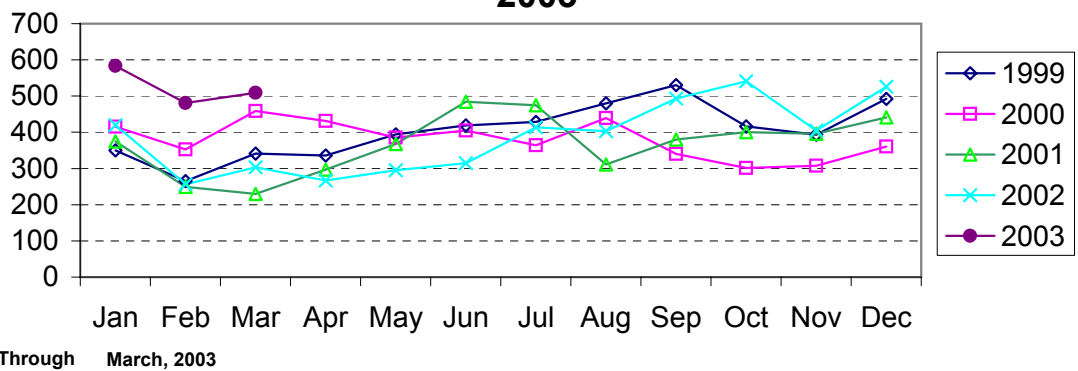
Larceny Reported by Month Charlotte-Mecklenburg Police Department: 1999-2003



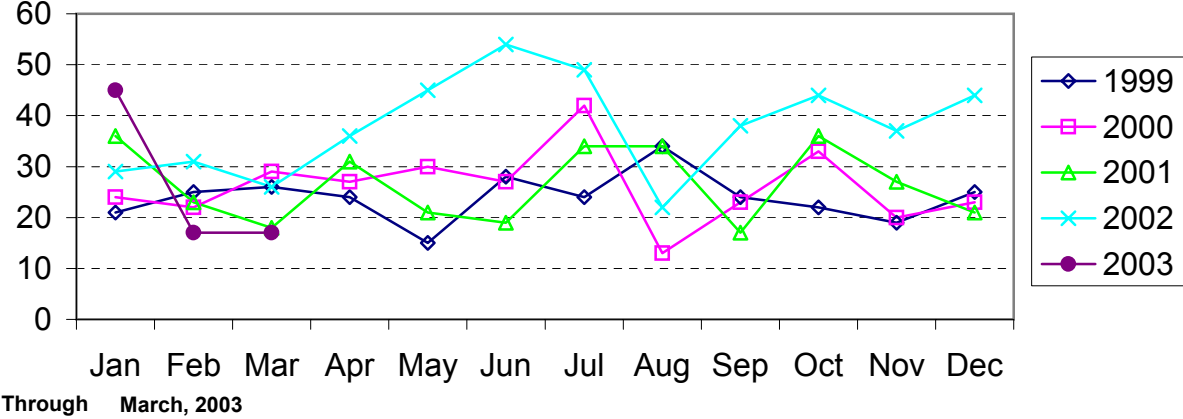
Larceny from Vehicle Reported by Month Charlotte-Mecklenburg Police Department: 1999-2003



Vehicle Theft Reported by Month Charlotte-Mecklenburg Police Department: 1999-2003



Arson Reported by Month Charlotte-Mecklenburg Police Department: 1999-2003



Index Offenses Reported by District and Service Area of Occurrence									
West Service Area: Jan-Mar, 2002-2003									
INDEX_CATEGORIES	Adam 2			Adam3			West Service Area		
	2002	2003	% Change	2002	2003	% Change	2002	2003	% Change
MURDER & NON-NEGLIGENT MANSLAUGHTER	1	1	0.0%	1	1	0.0%	2	2	0.0%
RAPE	6	5	-16.7%	4	9	125.0%	10	14	40.0%
ACTUAL	6	5	-16.7%	4	9	125.0%	10	14	40.0%
ATTEMPTED	0	0	NA	0	0	NA	0	0	NA
ROBBERY	44	64	45.5%	48	63	31.3%	92	127	38.0%
ARMED	33	47	42.4%	44	43	-2.3%	77	90	16.9%
STRONG-ARM	11	17	54.5%	4	20	400.0%	15	37	146.7%
AGGRAVATED ASSAULT	88	105	19.3%	91	135	48.4%	179	240	34.1%
BURGLARY	205	193	-5.9%	254	324	27.6%	459	517	12.6%
RESIDENTIAL	112	101	-9.8%	138	193	39.9%	250	294	17.6%
COMMERCIAL	93	55	-40.9%	116	131	12.9%	209	186	-11.0%
LARCENY	347	348	0.3%	483	502	3.9%	830	850	2.4%
FROM AUTO	177	178	0.6%	244	240	-1.6%	421	418	-0.7%
BICYCLE	2	2	0.0%	1	2	100.0%	3	4	33.3%
SHOPLIFTING	47	39	-17.0%	49	45	-8.2%	96	84	-12.5%
OTHERS	121	129	6.6%	189	215	13.8%	310	344	11.0%
VEHICLE THEFT	67	106	58.2%	143	168	17.5%	210	274	30.5%
ARSON	3	6	100.0%	9	12	33.3%	12	18	50.0%
TOTALS	761	828	8.8%	1033	1214	17.5%	1794	2042	13.8%
VIOLENT	139	175	25.9%	144	208	44.4%	283	383	35.3%
PROPERTY	622	653	5.0%	889	1006	13.2%	1511	1659	9.8%

Index Offenses Reported by District and Service Area of Occurrence									
Southeast Service Area: Jan-Mar, 2002-2003									
INDEX_CATEGORIES	Baker 1			Baker 3			Southeast Service Area		
	2002	2003	% Change	2002	2003	% Change	2002	2003	% Change
MURDER & NON-NEGLIGENT MANSLAUGHTER	1	0	-100.0%	2	2	0.0%	3	2	-33.3%
RAPE	6	5	-16.7%	7	7	0.0%	13	12	-7.7%
ACTUAL	6	5	-16.7%	6	7	16.7%	12	12	0.0%
ATTEMPTED	0	0	NA	1	0	-100.0%	1	0	-100.0%
ROBBERY	27	37	37.0%	60	72	20.0%	87	109	25.3%
ARMED	21	29	38.1%	52	63	21.2%	73	92	26.0%
STRONG-ARM	6	8	33.3%	8	10	25.0%	14	18	28.6%
AGGRAVATED ASSAULT	49	49	0.0%	77	73	-5.2%	126	122	-3.2%
BURGLARY	155	213	37.4%	259	206	-20.5%	414	419	1.2%
RESIDENTIAL	78	127	62.8%	181	165	-8.8%	259	292	12.7%
COMMERCIAL	77	86	11.7%	78	41	-47.4%	155	127	-18.1%
LARCENY	434	415	-4.4%	572	643	12.4%	1006	1058	5.2%
FROM AUTO	185	210	13.5%	285	356	24.9%	470	566	20.4%
BICYCLE	3	1	-66.7%	8	4	-50.0%	11	5	-54.5%
SHOPLIFTING	69	50	-27.5%	77	62	-19.5%	146	112	-23.3%
OTHERS	177	154	-13.0%	202	221	9.4%	379	375	-1.1%
VEHICLE THEFT	56	86	53.6%	97	170	75.3%	153	256	67.3%
ARSON	6	2	-66.7%	20	8	-60.0%	26	10	-61.5%
TOTALS	734	807	9.9%	1094	1181	8.0%	1828	1988	8.8%
VIOLENT	83	91	9.6%	146	154	5.5%	229	245	7.0%
PROPERTY	651	716	10.0%	948	1027	8.3%	1599	1743	9.0%

The data in the district breakdowns does not include a small number of offenses in which the location of the offense was unknown or was entered without a valid tract assignment. Districts are not equal in geographic size, demographics, zoning/development, and other factors that influence the rate of crimes committed in an area. Therefore, the comparison of raw offense totals across districts is not advisable.

Index Offenses Reported by District and Service Area of Occurrence									
Northeast Service Area: Jan-Mar, 2002-2003									
INDEX_CATEGORIES	Charlie 1			Charlie 3			Northeast Service Area		
	2002	2003	% Change	2002	2003	% Change	2002	2003	% Change
MURDER & NON-NEGLIGENT MANSLAUGHTER	0	1	NA	0	3	NA	0	4	NA
RAPE	6	9	50.0%	7	7	0.0%	13	16	23.1%
ACTUAL	4	8	100.0%	7	6	-14.3%	11	14	27.3%
ATTEMPTED	2	1	-50.0%	0	1	NA	2	2	0.0%
ROBBERY	51	47	-7.8%	53	57	7.5%	104	104	0.0%
ARMED	39	39	0.0%	44	49	11.4%	83	88	6.0%
STRONG-ARM	11	8	-27.3%	9	8	-11.1%	20	16	-20.0%
AGGRAVATED ASSAULT	86	78	-9.3%	70	84	20.0%	156	162	3.8%
BURGLARY	214	282	31.8%	286	251	-12.2%	500	533	6.6%
RESIDENTIAL	138	185	34.1%	216	196	-9.3%	354	381	7.6%
COMMERCIAL	76	97	27.6%	70	55	-21.4%	146	152	4.1%
LARCENY	943	841	-10.8%	473	524	10.8%	1416	1365	-3.6%
FROM AUTO	533	519	-2.6%	222	268	20.7%	755	787	4.2%
BICYCLE	3	2	-33.3%	2	3	50.0%	5	5	0.0%
SHOPLIFTING	111	80	-27.9%	63	59	-6.3%	174	139	-20.1%
OTHERS	296	240	-18.9%	186	194	4.3%	482	434	-10.0%
VEHICLE THEFT	78	159	103.8%	89	203	128.1%	167	362	116.8%
ARSON	8	10	25.0%	14	13	-7.1%	22	23	4.5%
TOTALS	1386	1427	3.0%	992	1142	15.1%	2378	2569	8.0%
VIOLENT	143	135	-5.6%	130	151	16.2%	273	286	4.8%
PROPERTY	1243	1292	3.9%	862	991	15.0%	2105	2283	8.5%

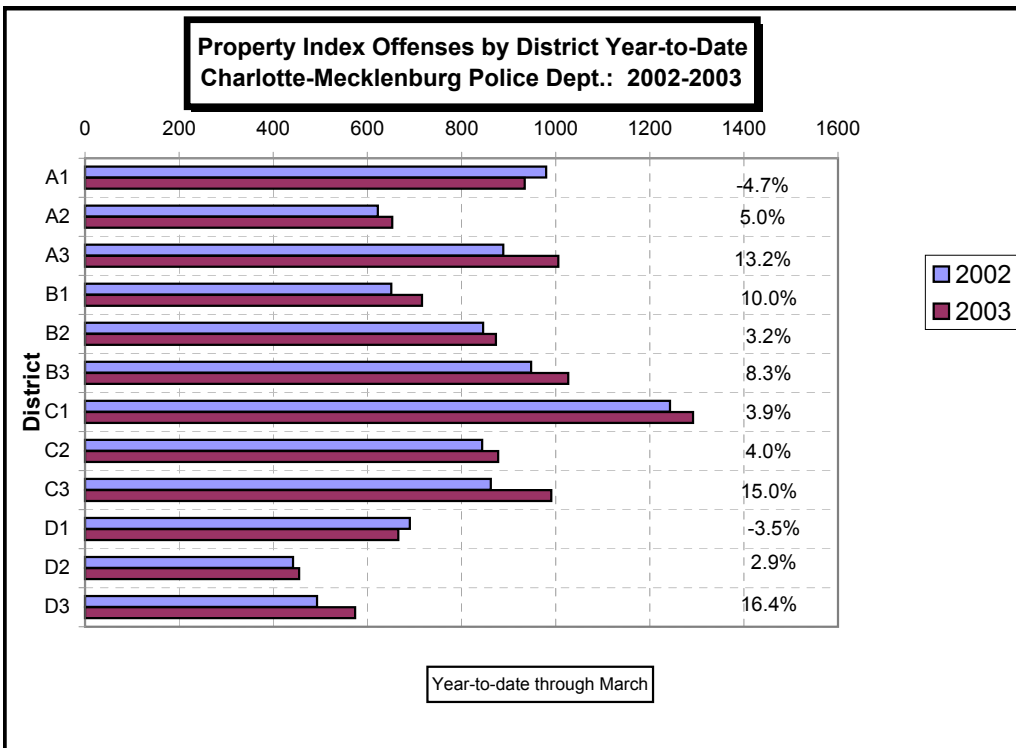
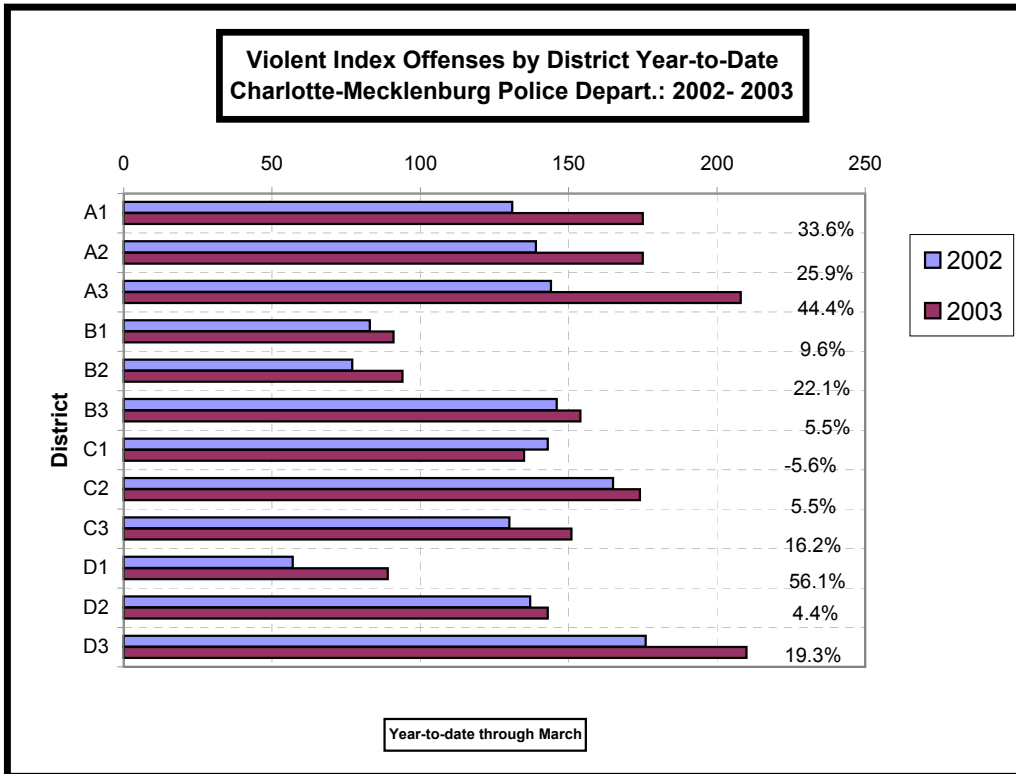
Index Offenses Reported by District and Service Area of Occurrence									
Central Service Area: Jan-Mar, 2002-2003									
INDEX_CATEGORIES	David 1			David 2			Central Service Area		
	2002	2003	% Change	2002	2003	% Change	2002	2003	% Change
MURDER & NON-NEGLIGENT MANSLAUGHTER	0	2	NA	5	1	-80.0%	5	3	-40.0%
RAPE	2	4	100.0%	5	8	60.0%	7	12	71.4%
ACTUAL	2	4	100.0%	4	7	75.0%	6	11	83.3%
ATTEMPTED	0	0	NA	1	1	0.0%	1	1	0.0%
ROBBERY	20	25	25.0%	36	50	38.9%	56	75	33.9%
ARMED	8	13	62.5%	29	35	20.7%	37	48	29.7%
STRONG-ARM	12	12	0.0%	7	15	114.3%	19	27	42.1%
AGGRAVATED ASSAULT	35	58	65.7%	91	84	-7.7%	126	142	12.7%
BURGLARY	96	102	6.3%	125	144	15.2%	221	246	11.3%
RESIDENTIAL	33	47	42.4%	81	106	30.9%	114	153	34.2%
COMMERCIAL	63	55	-12.7%	44	38	-13.6%	107	93	-13.1%
LARCENY	549	438	-20.2%	240	221	-7.9%	789	659	-16.5%
FROM AUTO	271	220	-18.8%	108	115	6.5%	379	335	-11.6%
BICYCLE	4	0	-100.0%	0	1	NA	4	1	-75.0%
SHOPLIFTING	23	16	-30.4%	16	7	-56.3%	39	23	-41.0%
OTHERS	251	202	-19.5%	116	98	-15.5%	367	300	-18.3%
VEHICLE THEFT	44	124	181.8%	71	83	16.9%	115	207	80.0%
ARSON	1	2	100.0%	6	7	16.7%	7	9	28.6%
TOTALS	747	755	1.1%	579	598	3.3%	1326	1353	2.0%
VIOLENT	57	89	56.1%	137	143	4.4%	194	232	19.6%
PROPERTY	690	666	-3.5%	442	455	2.9%	1132	1121	-1.0%

The data in the district breakdowns does not include a small number of offenses in which the location of the offense was unknown or was entered without a valid tract assignment. Districts are not equal in geographic size, demographics, zoning/development, and other factors that influence the rate of crimes committed in an area. Therefore, the comparison of raw offense totals across districts is not advisable.

Index Offenses Reported by District and Service Area of Occurrence									
East Service Area: Jan-Mar, 2002-2003									
INDEX_CATEGORIES	Charlie 2			David 3			East Service Area		
	2002	2003	% Change	2002	2003	% Change	2002	2003	% Change
MURDER & NON-NEGLIGENT MANSLAUGHTER	0	0	NA	2	1	-50.0%	2	1	-50.0%
RAPE	3	1	-66.7%	7	6	-14.3%	10	7	-30.0%
ACTUAL	2	1	-50.0%	7	6	-14.3%	9	7	-22.2%
ATTEMPTED	1	0	-100.0%	0	0	NA	1	0	-100.0%
ROBBERY	76	95	25.0%	59	88	49.2%	135	183	35.6%
ARMED	59	78	32.2%	52	74	42.3%	111	152	36.9%
STRONG-ARM	17	17	0.0%	7	14	100.0%	24	31	29.2%
AGGRAVATED ASSAULT	86	78	-9.3%	108	115	6.5%	194	193	-0.5%
BURGLARY	238	208	-12.6%	113	153	35.4%	351	361	2.8%
RESIDENTIAL	182	156	-14.3%	60	111	85.0%	242	267	10.3%
COMMERCIAL	56	52	-7.1%	53	42	-20.8%	109	94	-13.8%
LARCENY	526	549	4.4%	292	284	-2.7%	818	833	1.8%
FROM AUTO	190	270	42.1%	135	159	17.8%	325	429	32.0%
BICYCLE	0	5	NA	1	0	-100.0%	1	5	400.0%
SHOPLIFTING	158	109	-31.0%	32	19	-40.6%	190	128	-32.6%
OTHERS	178	165	-7.3%	124	106	-14.5%	302	271	-10.3%
VEHICLE THEFT	78	116	48.7%	82	134	63.4%	160	250	56.3%
ARSON	2	5	150.0%	6	3	-50.0%	8	8	0.0%
TOTALS	1009	1052	4.3%	669	784	17.2%	1678	1836	9.4%
VIOLENT	165	174	5.5%	176	210	19.3%	341	384	12.6%
PROPERTY	844	878	4.0%	493	574	16.4%	1337	1452	8.6%

Index Offenses Reported by District and Service Area of Occurrence									
South Service Area: Jan-Mar, 2002-2003									
INDEX_CATEGORIES	Adam 1			Baker 2			South Service Area		
	2002	2003	% Change	2002	2003	% Change	2002	2003	% Change
MURDER & NON-NEGLIGENT MANSLAUGHTER	3	1	-66.7%	1	0	-100.0%	4	1	-75.0%
RAPE	8	6	-25.0%	3	5	66.7%	11	11	0.0%
ACTUAL	6	6	0.0%	3	4	33.3%	9	10	11.1%
ATTEMPTED	2	0	-100.0%	0	1	NA	2	1	-50.0%
ROBBERY	32	88	175.0%	23	37	60.9%	55	125	127.3%
ARMED	22	56	154.5%	19	25	31.6%	41	81	97.6%
STRONG-ARM	10	22	120.0%	4	12	200.0%	14	34	142.9%
AGGRAVATED ASSAULT	88	80	-9.1%	50	52	4.0%	138	132	-4.3%
BURGLARY	214	173	-19.2%	212	220	3.8%	426	393	-7.7%
RESIDENTIAL	117	114	-2.6%	139	171	23.0%	256	285	11.3%
COMMERCIAL	97	59	-39.2%	73	49	-32.9%	170	108	-36.5%
LARCENY	653	634	-2.9%	567	558	-1.6%	1220	1192	-2.3%
FROM AUTO	316	282	-10.8%	318	303	-4.7%	634	585	-7.7%
BICYCLE	3	1	-66.7%	4	2	-50.0%	7	3	-57.1%
SHOPLIFTING	112	108	-3.6%	44	47	6.8%	156	155	-0.6%
OTHERS	222	243	9.5%	201	206	2.5%	423	449	6.1%
VEHICLE THEFT	111	124	11.7%	61	87	42.6%	172	211	22.7%
ARSON	2	3	50.0%	6	8	33.3%	8	11	37.5%
TOTALS	1111	1109	-0.2%	923	967	4.8%	2034	2076	2.1%
VIOLENT	131	175	33.6%	77	94	22.1%	208	269	29.3%
PROPERTY	980	934	-4.7%	846	873	3.2%	1826	1807	-1.0%

The data in the district breakdowns does not include a small number of offenses in which the location of the offense was unknown or was entered without a valid tract assignment. Districts are not equal in geographic size, demographics, zoning/development, and other factors that influence the rate of crimes committed in an area. Therefore, the comparison of raw offense totals across districts is not advisable.



The data in the district breakdowns does not include a small number of offenses in which the location of the offense was unknown or was entered without a valid tract assignment. Districts are not equal in geographic size, demographics, zoning/development, and other factors that influence the rate of crimes committed in an area. Therefore, the comparison of raw offense totals across districts is not advisable.

**Arrests by Charlotte-Mecklenburg Police Department
Year-To-Date: 2002-2003
(Through March)**

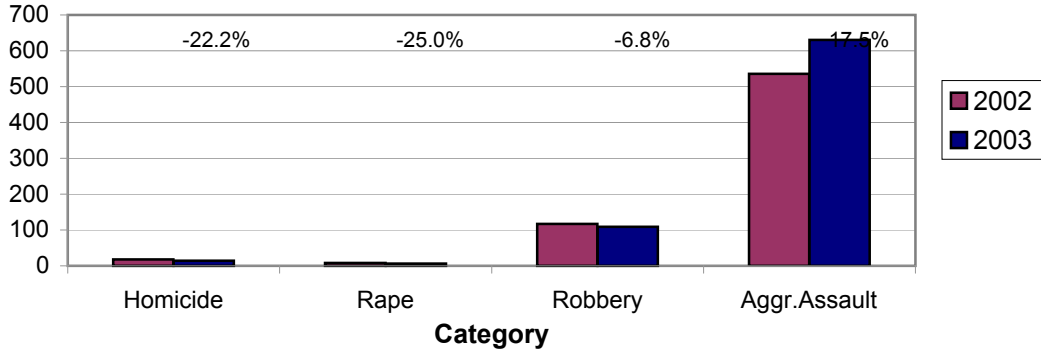
CATEGORY	ADULTS (AGE 18 & OLDER):			JUVENILES (UNDER 18):			TOTAL ARRESTS:		
	2002 Y-T-D	2003 Y-T-D	% CHANGE	2002 Y-T-D	2003 Y-T-D	% CHANGE	2002 Y-T-D	2003 Y-T-D	% CHANGE
Murder/Non-Negligent Manslaughter	18	13	-27.8%	0	1	NA	18	14	-22.2%
Negligent & Vehicular Manslaughter	0	0	NA	0	0	NA	0	0	NA
Rape	8	6	-25.0%	0	0	NA	8	6	-25.0%
Robbery	79	82	3.8%	38	27	-28.9%	117	109	-6.8%
Aggravated Assault	470	521	10.9%	66	109	65.2%	536	630	17.5%
Burglary	128	112	-12.5%	69	50	-27.5%	197	162	-17.8%
Larceny	429	335	-21.9%	145	175	20.7%	574	510	-11.1%
Vehicle Theft	36	31	-13.9%	40	112	180.0%	76	143	88.2%
Non-Aggravated Assault	404	409	1.2%	196	234	19.4%	600	643	7.2%
Arson	2	10	400.0%	10	8	-20.0%	12	18	50.0%
Forgery/Counterfiet	27	24	-11.1%	0	0	NA	27	24	-11.1%
Fraud	190	114	-40.0%	1	3	200.0%	191	117	-38.7%
Embezzlement	43	28	-34.9%	2	2	0.0%	45	30	-33.3%
Stolen Property	107	141	31.8%	34	44	29.4%	141	185	31.2%
Vandalism	45	56	24.4%	37	43	16.2%	82	99	20.7%
Weapons	115	124	7.8%	12	15	25.0%	127	139	9.4%
Prostitution	57	37	-35.1%	0	0	NA	57	37	-35.1%
Sex Offenses	51	37	-27.5%	6	10	66.7%	57	47	-17.5%
Drugs	814	882	8.4%	92	89	-3.3%	906	971	7.2%
Gambling	0	4	NA	0	0	NA	0	4	NA
Offenses vs. Family	24	4	-83.3%	0	0	NA	24	4	-83.3%
DUI	687	492	-28.4%	6	1	-83.3%	693	493	-28.9%
Liquor	71	41	-42.3%	3	4	33.3%	74	45	-39.2%
Disorder Conduct	127	116	-8.7%	46	96	108.7%	173	212	22.5%
Other Non-Traffic	1524	1775	16.5%	186	197	5.9%	1710	1972	15.3%
VIOLENT INDEX¹	575	622	8.2%	104	137	31.7%	679	759	11.8%
PROPERTY INDEX²	595	488	-18.0%	264	345	30.7%	859	833	-3.0%
INDEX SUBTOTAL	1170	1110	-5.1%	368	482	31.0%	1538	1592	3.5%
PART 2 SUBTOTAL³	4286	4284	0.0%	621	738	18.8%	4907	5022	2.3%
TOTAL	5456	5394	-1.1%	989	1220	23.4%	6445	6614	2.6%

¹Violent Index includes murder and non-negligent manslaughter, rape, robbery, and aggravated assault.

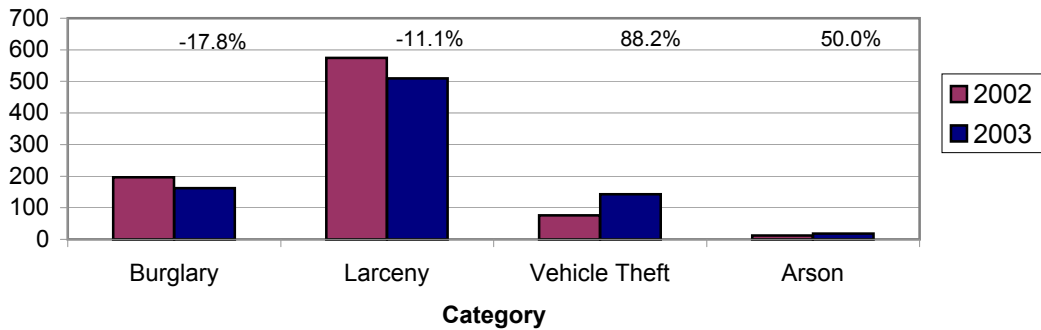
²Property Index includes burglary, larceny, vehicle theft, and arson.

³Part 2 crimes include non-traffic crimes not counted in the Index totals.

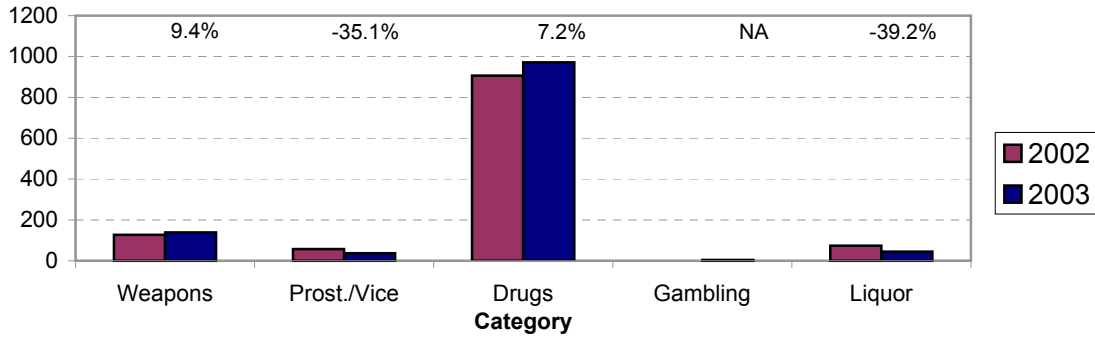
**Violent Index Arrests Year-to-Date
Charlotte-Mecklenburg Police Department: 2002-2003
(Through March)**



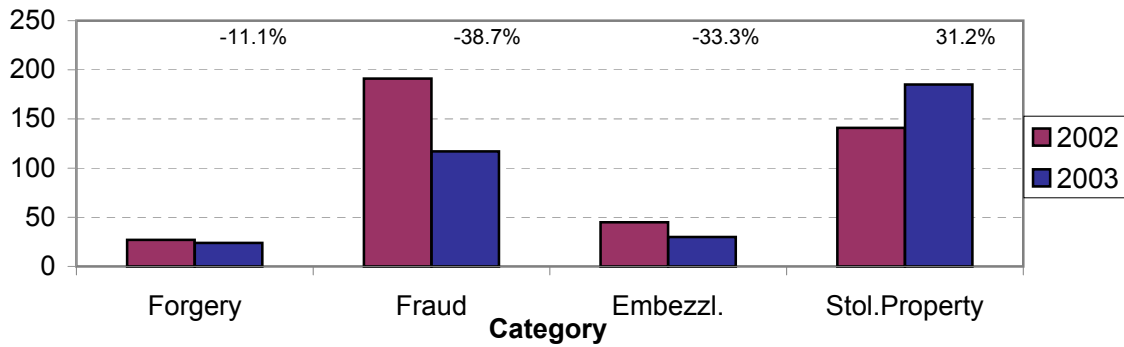
**Property Index Arrests Year-to-Date
Charlotte-Mecklenburg Police Department: 2002-2003
(Through March)**



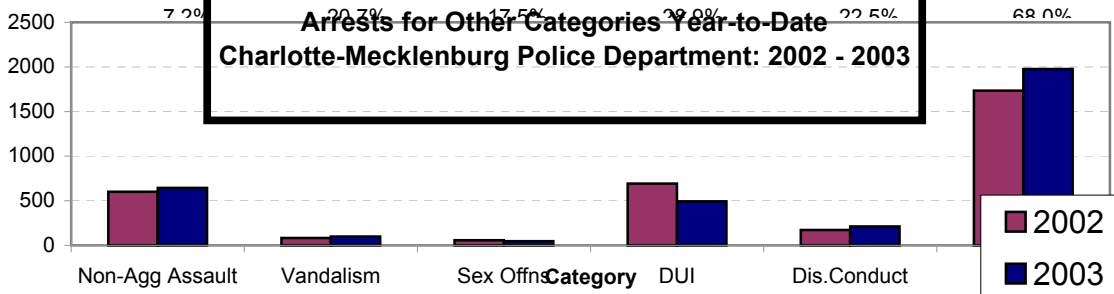
**Arrests for Vice/CCW/Drugs/Etc. Year-to-Date
Charlotte-Mecklenburg Police Department: 2002 - 2003
(Through March)**



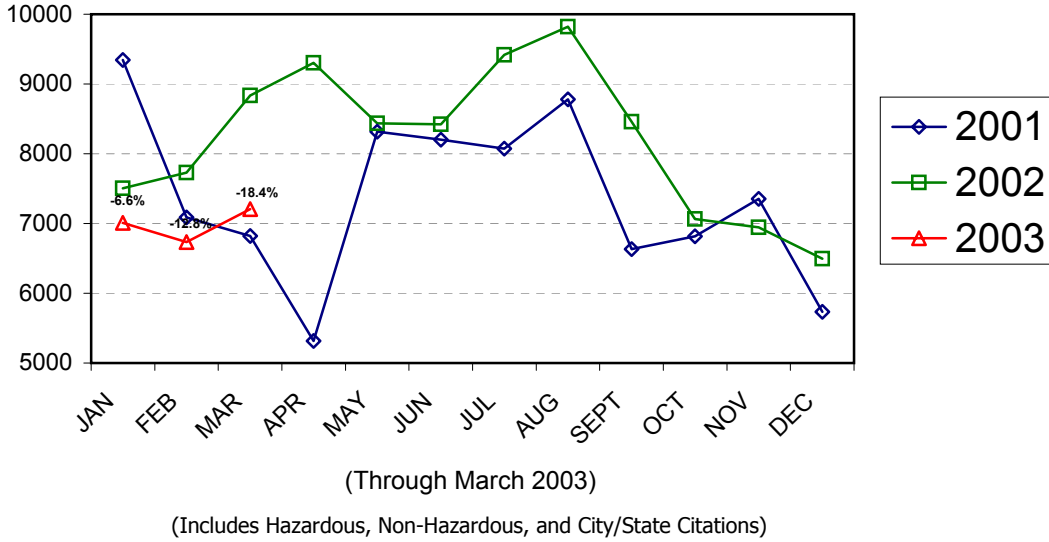
**Arrests for Property/White Collar Crime Year-to-Date
Charlotte-Mecklenburg Police Department: 2002 - 2003
(Through March)**



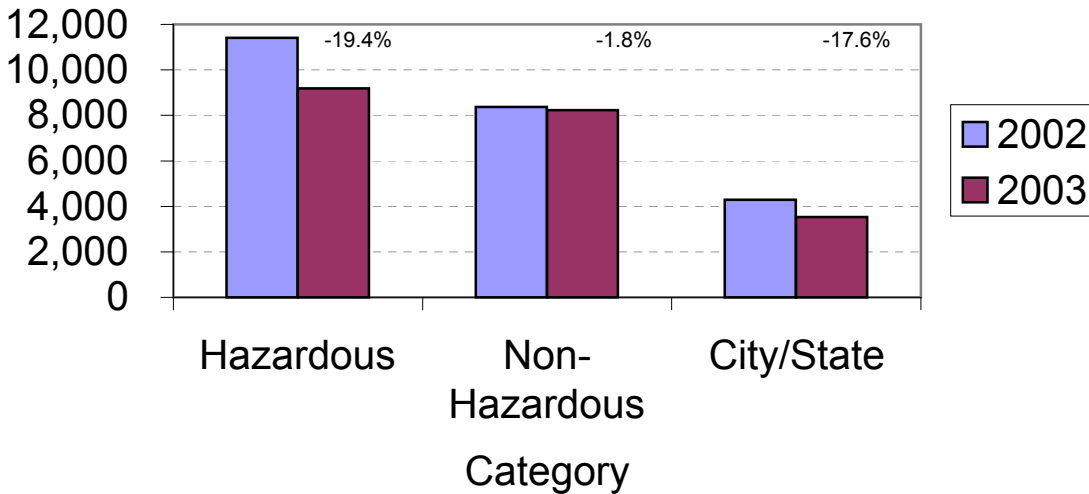
**Arrests for Other Categories Year-to-Date
Charlotte-Mecklenburg Police Department: 2002 - 2003**



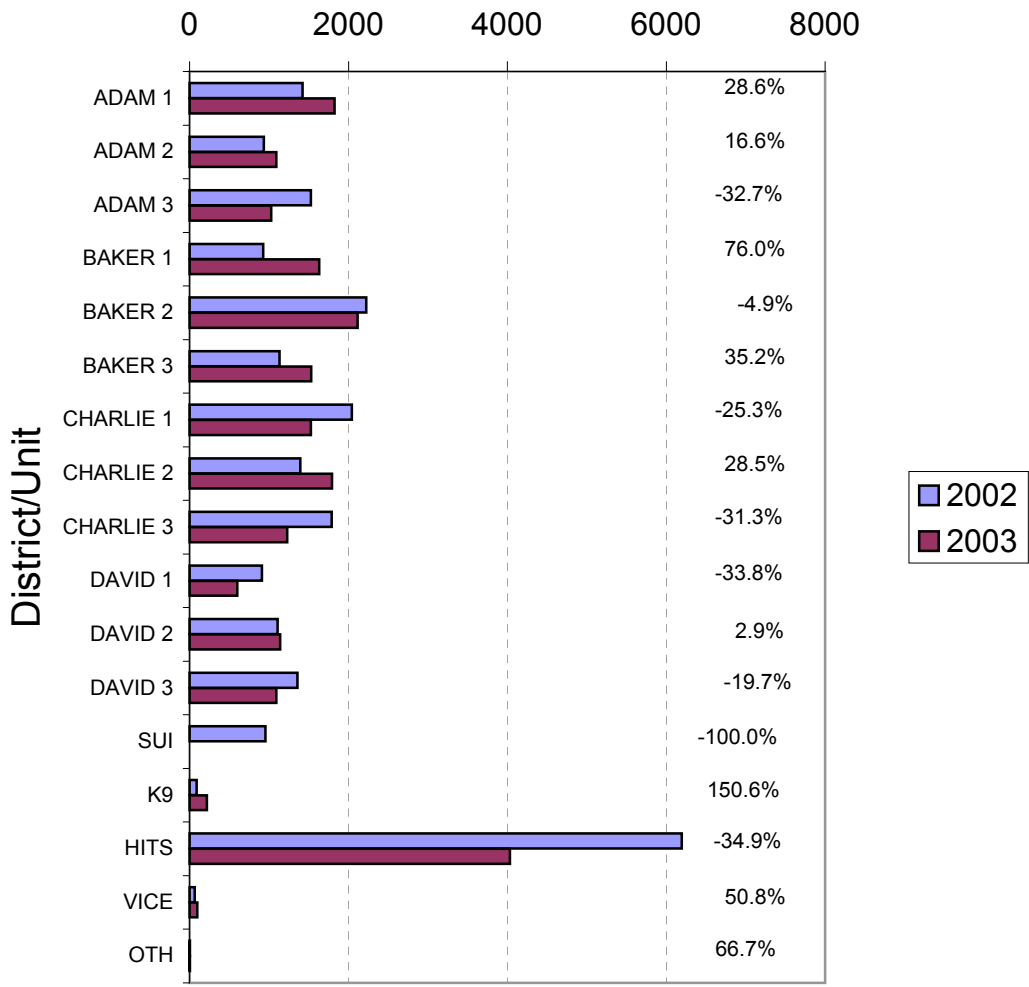
**Total Citation Enforcement by Month
Charlotte-Mecklenburg Police Dept: 2001-2003**



**CMPD Citation Enforcement by Category
Year-to-Date, 2002 - 2003
(Through March 2003)**



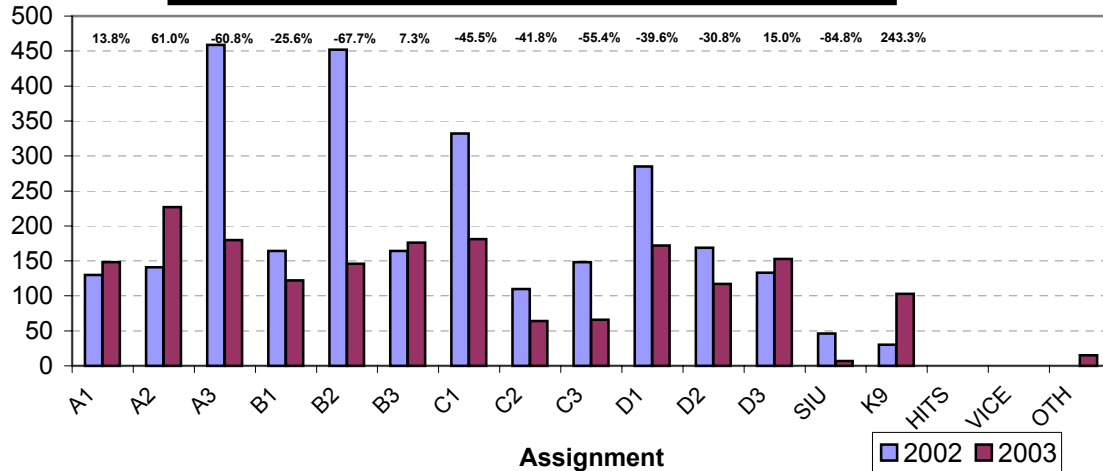
**Citations Issued Year-to-Date by CMPD Districts/Units
2002 - 2003
(Through March 2003)**



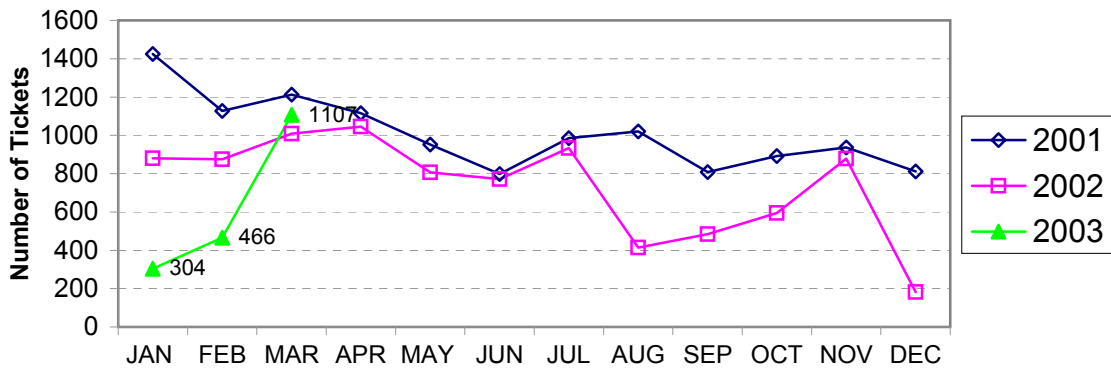
**Citations Issued by the Charlotte Mecklenburg Police Depart Year-to-Date
(Through March 2003)**

Total Citations	2002	2003	% Change
Hazardous	11,403	9,187	-19.4%
Non-Hazardous	8,377	8,229	-1.8%
Other City/State Statute/Ordinance	4,288	3,533	-17.6%
Total	48,136	41,898	-13.0%

**Warning Tickets Issued by CMPD District/Unit
Year-to-Date, 2002 - 2003
Through March, 2003**



**Total Warning Tickets Issued by CMPD
By Month: 2001 - 2003**



**Warning Tickets Issued by CMPD Year-to-Date
Through March, 2003**

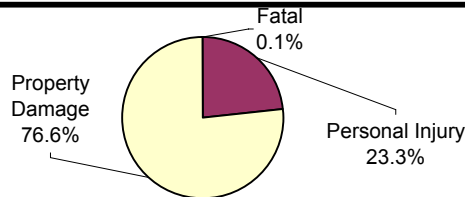
	2002	2003	% Change
Total Warning Tickets	2763	1877	-32.1%

**Traffic Collision Reports
Charlotte-Mecklenburg Police Department
Year-to-Date: 2002-2003
(Through March)**

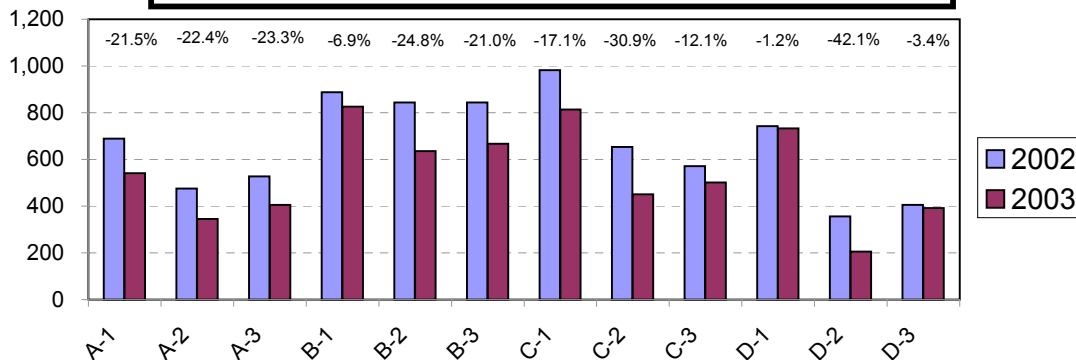
<u>Type</u>	<u>2002</u>	<u>2003</u>	<u>% Change</u>
Fatal Collisions	12	16	33.3%
Vehicle Occupants Killed	8	18	125.0%
Pedestrians Killed	4	2	-50.0%
Personal Injury Collisions	1888	1520	-19.2%
Property Damage Collisions	6075	5053	-16.8%
Total Collisions	7975	6589	-17.4%

* The number of fatal collisions and the number of persons killed in those incidents is taken from the HITS file. Their records are updated for deaths that occur after the initial report is filed.

**Traffic Collisions Reported by Type
Charlotte-Mecklenburg Police Department:
2003 Year-to-Date
(Through March)**



**Traffic Collisions Reported by Charlotte-Mecklenburg Police Dept.
Year-to-Date By Location (District) of Accident : 2002 -2003
(Through March)**



Uniform Crime Reporting Procedures:

The Charlotte-Mecklenburg Police Department reports offense and arrest statistics in accordance with standard Uniform Crime Reporting (UCR) guidelines. UCR policy states that any adjustments to previous months can be made on the current month's report:

...In tabulating crime counts, an agency may find that offense totals for past months require adjustments due to developments in the investigation or other handling of the matter. It may be necessary to adjust totals reported to UCR for the past month or prior months. Needed adjustments can be made on the current month's report and do not affect the reliability of the figures in that such adjustments tend to equalize each other from month to month over a period of time.

- *Uniform Crime Reporting Handbook*, FBI, 1984, p. 42-43

We are required to report crime monthly to the UCR program, and we do therefore make an effort to process monthly changes in a timely manner. However, occasionally due to the review and processing required for reclassifying, unfounding or clearing cases, the current month's totals may reflect the processing of a backlog of these changes from previous months.

Users of the data are cautioned that conclusions about substantial changes in crime trends or in clearance rates based on only a single month's data or trend may reflect some of these adjustments. For this reason, in addition to the monthly and year-to-date trends on Page 1, the monthly report routinely includes a comparison for the previous 12 months (p. 4), as well as graphs that provide seasonal/monthly comparisons over a five-year period (p. 5-8).

We do make an effort to present the most accurate information available at the time this report is published. However, errors in compiling the data and charts do sometimes occur, so please notify the Research, Planning, and Analysis office if you have any questions about the data in this report.

The formats for this report were revised with the assistance of Officer David Padgett, who converted a number of spreadsheets, graphs, and charts from old software.

V. L. Sorban
Research, Planning & Analysis Bureau