

**CHARLOTTE-MECKLENBURG POLICE DEPARTMENT
MONTHLY SUMMARY REPORT
JANUARY, 2002**

**Darrel Stephens
Chief of Police**

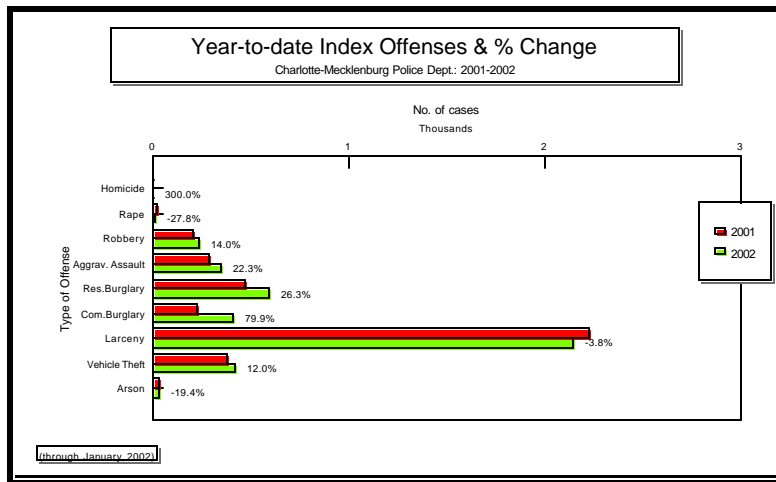
INDEX OFFENSES REPORTED TO THE CHARLOTTE-MECKLENBURG POLICE DEPARTMENT									
JANUARY, 2002 INDEX OFFENSES	# THIS MONTH	% OF ALL INDEX	# LAST MONTH	MONTHLY % CHANGE	SAME MONTH LAST YEAR	MONTHLY % CHANGE	THIS YEAR TO DATE	LAST YEAR TO DATE	ANNUAL % CHANGE
HOMICIDE (MURDER & NON- NEGLIGENT MANSLAUGHTER)	4	0.1%	5	-20.0%	1	300.0%	4	1	300.0%
RAPE TOTAL	13	0.3%	21	-38.1%	18	-27.8%	13	18	-27.8%
ACTUAL	11	0.3%	21	-47.6%	15	-26.7%	11	15	-26.7%
ATTEMPT	2	0.0%	0	ERR	3	-33.3%	2	3	-33.3%
ROBBERY TOTAL	236	5.6%	332	-28.9%	207	14.0%	236	207	14.0%
ARMED	198	4.7%	263	-24.7%	165	20.0%	198	165	20.0%
STRONG-ARM	38	0.9%	69	-44.9%	42	-9.5%	38	42	-9.5%
AGGRAVATED ASSAULT TOTAL	346	8.3%	570	-39.3%	283	22.3%	346	283	22.3%
BURGLARY TOTAL	1003	23.9%	844	18.8%	697	43.9%	1003	697	43.9%
RESIDENTIAL	591	14.1%	519	13.9%	468	26.3%	591	468	26.3%
COMMERCIAL	412	9.8%	325	26.8%	229	79.9%	412	229	79.9%

FORCE	773	18.4%	631	22.5%	515	50.1%	773	515	50.1%
NO FORCE	149	3.6%	147	1.4%	118	26.3%	149	118	26.3%
ATTEMPT	81	1.9%	66	22.7%	64	26.6%	81	64	26.6%
LARCENY TOTAL	2139	51.1%	2279	-6.1%	2223	-3.8%	2139	2223	-3.8%
\$200 AND OVER	1055	25.2%	1061	-0.6%	873	20.8%	ERR	873	ERR
\$50 TO \$200	380	9.1%	468	-18.8%	388	-2.1%	ERR	388	ERR
UNDER \$50	704	16.8%	750	-6.1%	962	-26.8%	ERR	962	ERR

FROM AUTO	1023	24.4%	1038	-1.4%	921	11.1%	3162	921	243.3%
BICYCLE	11	0.3%	8	37.5%	9	22.2%	2118	9	23433.3%
SHOPLIFTING	282	6.7%	370	-23.8%	223	26.5%	2020	223	805.8%
OTHERS	823	19.6%	863	-4.6%	1070	-23.1%	823	1070	-23.1%
VEHICLE THEFT TOTAL	420	10.0%	441	-4.8%	375	12.0%	420	375	12.0%
ARSON TOTAL	29	0.7%	21	38.1%	36	-19.4%	29	36	-19.4%
TOTALS	4190	100.0%	4513	-7.2%	3840	9.1%	4190	3840	9.1%
VIOLENT	599	14.3%	928	-35.5%	509	17.7%	599	509	17.7%
PROPERTY	3591	85.7%	3585	0.2%	3331	7.8%	3591	3331	7.8%

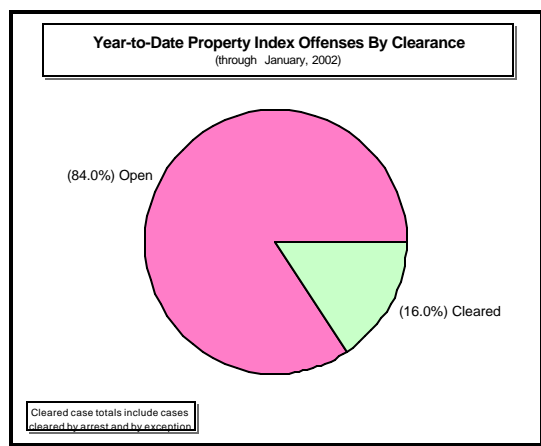
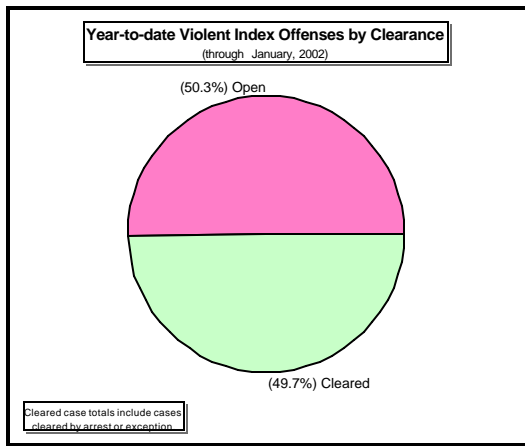
NOTE: These totals include offenses reported to the Charlotte-Mecklenburg Police Department in accordance with the Uniform Crime Reporting Program. Totals for homicide do not include cases investigated by the police but classed by UCR guidelines as negligent manslaughter or as 'justifiable homicide.'

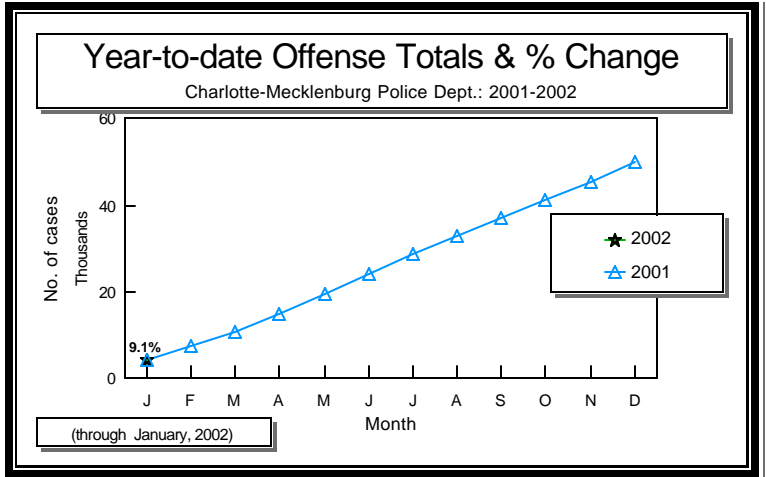
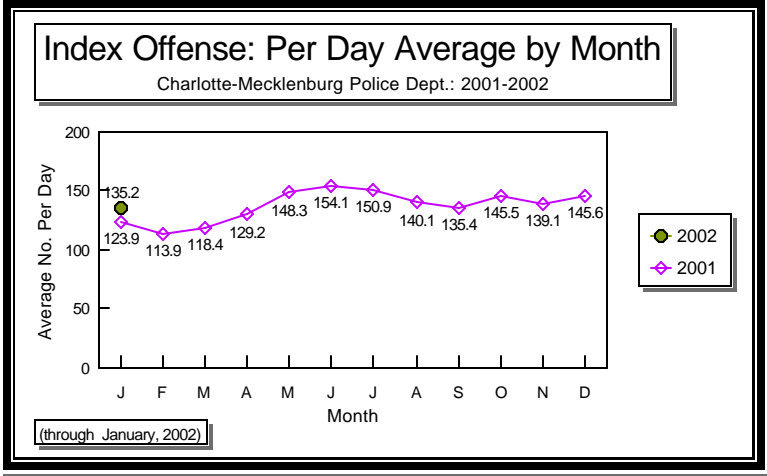
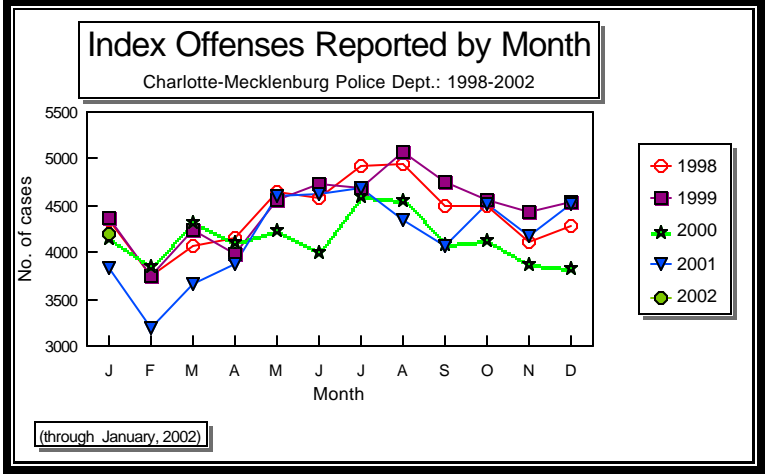
Late adjustments to previous months through unfoounding, reclassification and late entry may affect monthly totals. Adjustments such as these are part of standard UCR procedures; while they may cause some exceptions in month to month comparisons, the differences in comparisons over longer periods (e.g., yearly comparisons) are accommodated in UCR reporting. (See p.20 of this report)



INDEX CLEARANCES REPORTED TO THE CHARLOTTE-MECKLENBURG POLICE DEPARTMENT										
JANUARY, 2002 INDEX CLEARANCES	THIS MONTH:		LAST MONTH:		SAME MO. LAST YR.:		THIS YEAR TO DATE:		LAST YEAR TO DATE:	
	NO.	%	NO.	%	NO.	%	NO.	%	NO.	%
MURDER & NON-NEGLIGENT MANSLAUGHTER	3	75.0%	9	180.0%	4	400.0%	3	75.0%	4	400.0%
RAPE TOTAL	10	76.9%	10	47.6%	17	94.4%	10	76.9%	17	94.4%
ACTUAL	9	81.8%	10	47.6%	16	106.7%	9	81.8%	16	106.7%
ATTEMPT	1	50.0%	0	ERR	1	33.3%	1	50.0%	1	33.3%
ROBBERY TOTAL	60	25.4%	84	25.3%	68	32.9%	60	25.4%	68	32.9%
ARMED	50	25.3%	66	25.1%	51	30.9%	50	25.3%	51	30.9%
STRONG-ARM	10	26.3%	18	26.1%	17	40.5%	10	26.3%	17	40.5%
AGGRAVATED ASSAULT TOTAL	225	65.0%	182	31.9%	227	80.2%	225	65.0%	227	80.2%
BURGLARY TOTAL	188	18.7%	74	8.8%	120	17.2%	188	18.7%	120	17.2%
RESIDENTIAL	143	24.2%	54	10.4%	87	18.6%	143	24.2%	87	18.6%
COMMERCIAL	45	10.9%	20	6.2%	33	14.4%	45	10.9%	33	14.4%
LARCENY TOTAL	277	12.9%	304	13.3%	333	15.0%	277	12.9%	333	15.0%
FROM AUTO	29	2.8%	34	3.3%	62	6.7%	29	0.9%	62	6.7%
BICYCLE	1	9.1%	2	25.0%	1	11.1%	1	0.0%	1	11.1%
SHOPLIFTING	155	55.0%	206	55.7%	121	54.3%	155	7.7%	121	54.3%
OTHERS	92	11.2%	62	7.2%	149	13.9%	92	11.2%	149	13.9%
VEHICLE THEFT TOTAL	96	22.9%	130	29.5%	95	25.3%	96	22.9%	95	25.3%
ARSON TOTAL	13	44.8%	1	4.8%	9	25.0%	13	44.8%	9	25.0%
TOTALS	872	20.8%	794	17.6%	873	22.7%	872	20.8%	873	22.7%

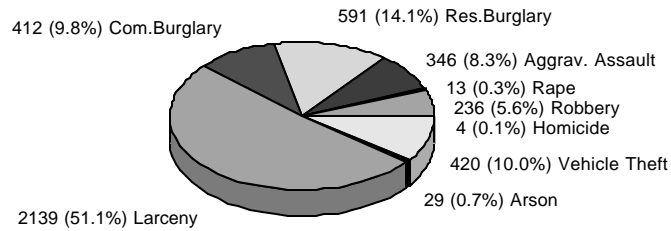
NOTE: Clearances are reported in accordance with Uniform Crime Report guidelines. Since clearances are not counted until they are entered into the Records system, any delays in processing may result in some clearances being reported in succeeding months.





Year-to-date Index Offenses by Type

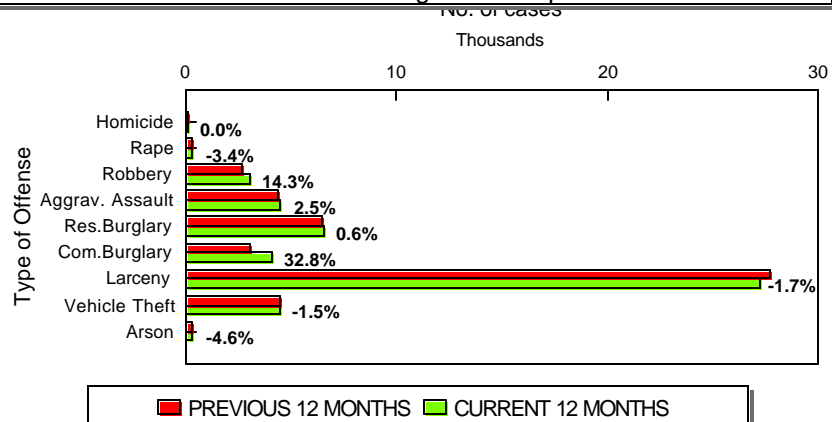
Charlotte-Mecklenburg Police: 2002

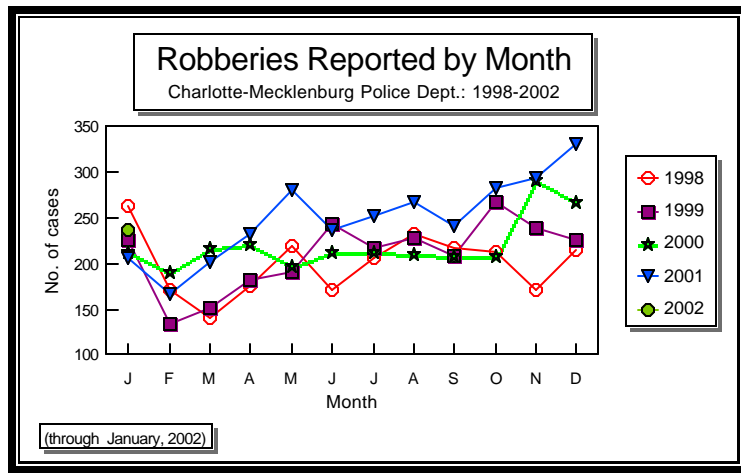
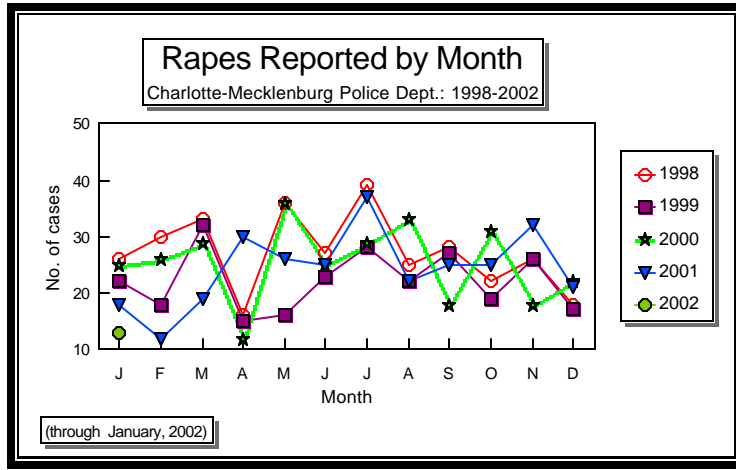
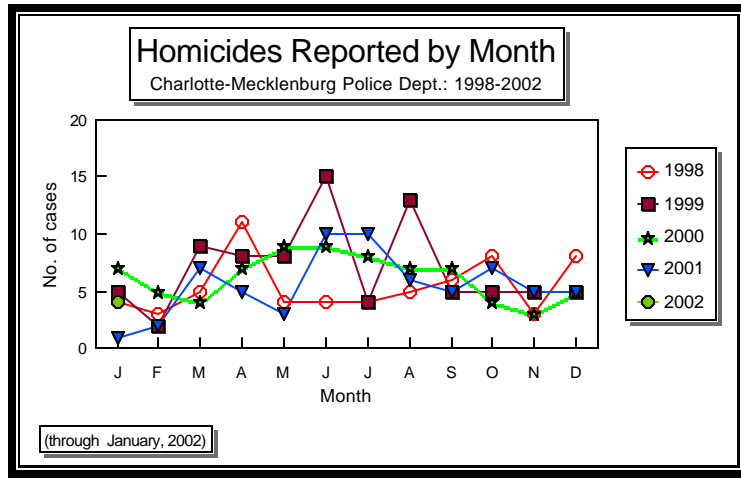


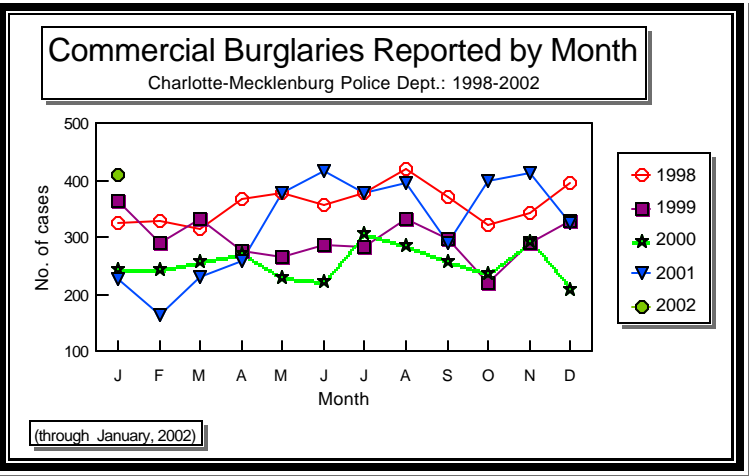
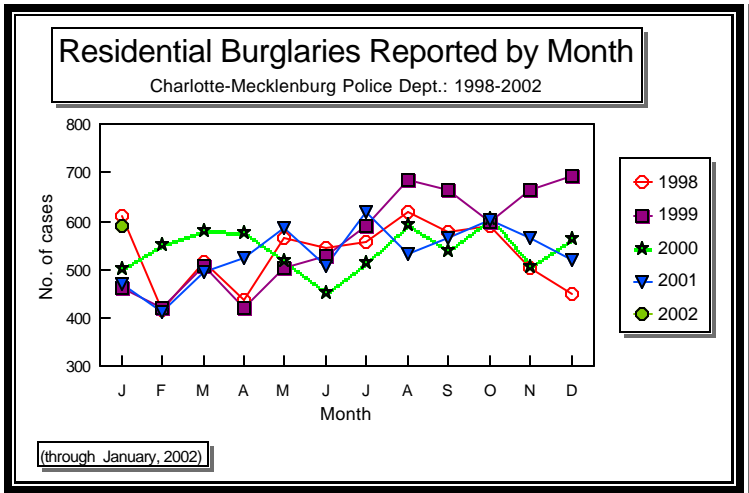
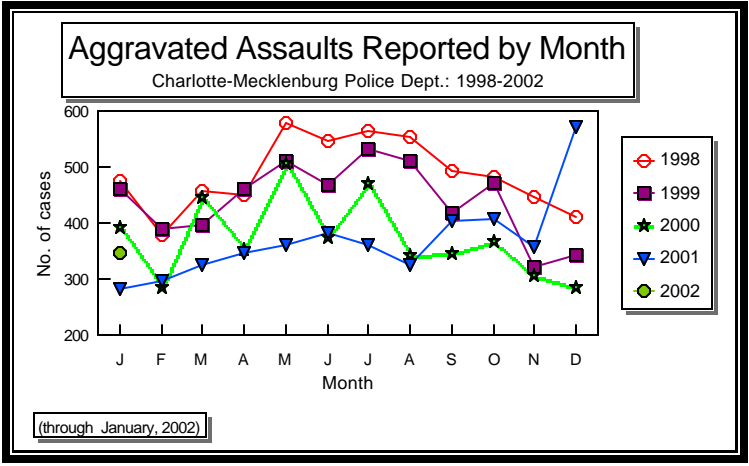
(through January, 2002)

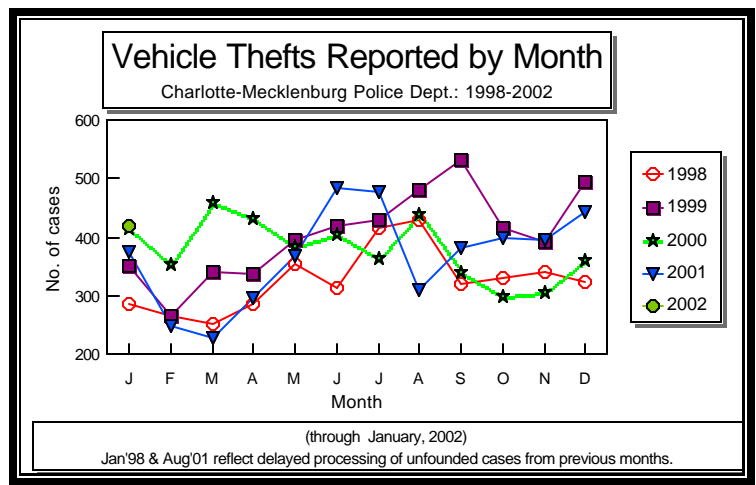
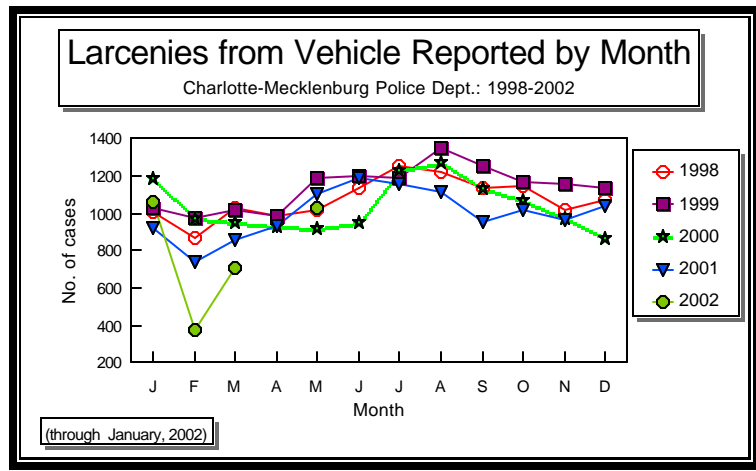
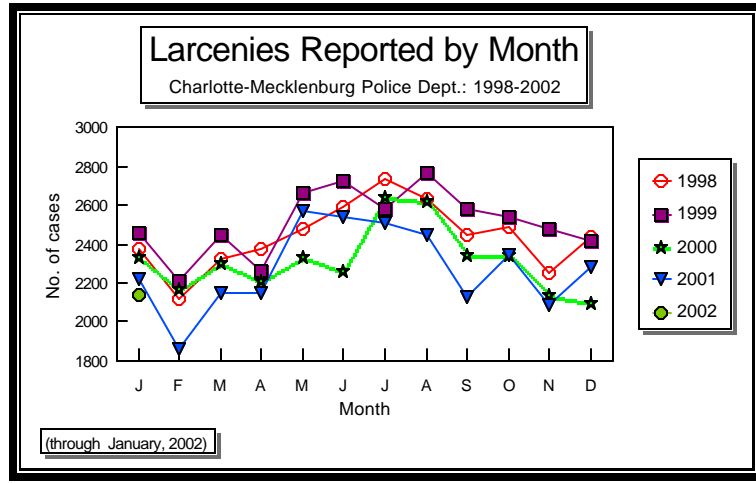
Index Offenses in Current and Previous 12 Month Periods

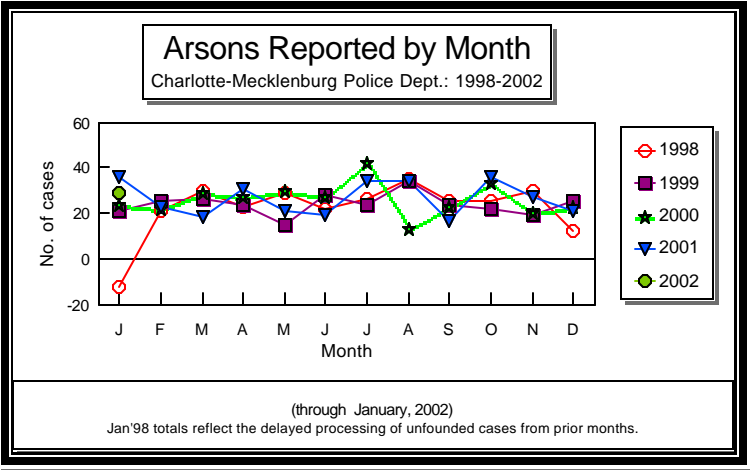
Charlotte-Mecklenburg Police Department











Index Offenses Reported by District and Service Area of Occurrence

West Service Area: January, 2001-2002

This data is based on the district configuration adopted Nov. 8, 2000.

INDEX_CATEGORIES	Adam 2			Adam3			*	West Service Area		
	2001	2002	% Change	2001	2002	% Change		2001	2002	% Change
MURDER & NON-NEGLIGENT MANSLAUGHTER	0	0	ERR	0	0	ERR	*	0	0	ERR
RAPE	1	1	0.0%	2	1	-50.0%	*	3	2	-33.3%
ACTUAL	1	1	0.0%	1	1	0.0%	*	2	2	0.0%
ATTEMPTED	0	0	ERR	1	0	-100.0%	*	1	0	-100.0%
ROBBERY	20	16	-20.0%	23	16	-30.4%	*	43	32	-25.6%
ARMED	18	15	-16.7%	19	16	-15.8%	*	37	31	-16.2%
STRONG-ARM	2	1	-50.0%	4	0	-100.0%	*	6	1	-83.3%
AGGRAVATED ASSAULT	23	34	47.8%	29	35	20.7%	*	52	69	32.7%
BURGLARY	54	90	66.7%	101	116	14.9%	*	155	206	32.9%
RESIDENTIAL	33	42	27.3%	70	59	-15.7%	*	103	101	-1.9%
COMMERCIAL	21	48	128.6%	31	57	83.9%	*	52	105	101.9%
LARCENY	136	126	-7.4%	206	177	-14.1%	*	342	303	-11.4%
FROM AUTO	52	60	15.4%	79	87	10.1%	*	131	147	12.2%
BICYCLE	1	1	0.0%	2	1	-50.0%	*	3	2	-33.3%
SHOPLIFTING	16	21	31.3%	29	15	-48.3%	*	45	36	-20.0%
OTHERS	67	44	-34.3%	96	74	-22.9%	*	163	118	-27.6%
VEHICLE THEFT	36	31	-13.9%	34	61	79.4%	*	70	92	31.4%
ARSON	3	0	-100.0%	6	1	-83.3%	*	9	1	-88.9%
TOTALS	273	298	9.2%	401	407	1.5%	*	674	705	4.6%
VIOLENT PROPERTY	44 229	51 247	15.9% 7.9%	54 347	52 355	-3.7% 2.3%	*	98 576	103 602	5.1% 4.5%

Index Offenses Reported by District and Service Area of Occurrence

Southeast Service Area: January, 2001-2002

This data is based on the district configuration adopted Nov. 8, 2000.

INDEX_CATEGORIES	Baker 1			Baker 3			*	Southeast Service Area		
	2001	2002	% Change	2001	2002	% Change		2001	2002	% Change
MURDER & NON-NEGLIGENT MANSLAUGHTER	0	0	ERR	0	0	ERR	*	0	0	ERR
RAPE	1	2	100.0%	3	0	-100.0%	*	4	2	-50.0%
ACTUAL	1	2	100.0%	2	0	-100.0%	*	3	2	-33.3%
ATTEMPTED	0	0	ERR	1	0	-100.0%	*	1	0	-100.0%
ROBBERY	12	16	33.3%	9	25	177.8%	*	21	41	95.2%
ARMED	11	14	27.3%	7	22	214.3%	*	18	36	100.0%
STRONG-ARM	1	2	100.0%	2	3	50.0%	*	3	5	66.7%
AGGRAVATED ASSAULT	23	14	-39.1%	25	27	8.0%	*	48	41	-14.6%
BURGLARY	45	66	46.7%	53	97	83.0%	*	98	163	66.3%
RESIDENTIAL	29	23	-20.7%	40	68	70.0%	*	69	91	31.9%
COMMERCIAL	16	43	168.8%	13	29	123.1%	*	29	72	148.3%
LARCENY	0	0	ERR	0	0	ERR	*	411	371	-9.7%
FROM AUTO	194	164	-15.5%	217	207	-4.6%	*	190	164	-13.7%
BICYCLE	84	57	-32.1%	106	107	0.9%	*	0	4	ERR
SHOPLIFTING	0	0	ERR	0	4	ERR	*	51	51	0.0%
OTHERS	30	27	-10.0%	21	24	14.3%	*	170	152	-10.6%
VEHICLE THEFT	80	80	0.0%	90	72	-20.0%	*	36	61	69.4%
ARSON	14	22	57.1%	22	39	77.3%	*	8	8	0.0%
TOTALS	294	286	-2.7%	332	401	20.8%	*	626	687	9.7%
VIOLENT PROPERTY	36 258	32 254	-11.1% -1.6%	37 295	52 349	40.5% 18.3%	*	73 553	84 603	15.1% 9.0%

Index Offenses Reported by District and Service Area of Occurrence

Northeast Service Area: January, 2001-2002

This data is based on the district configuration adopted Nov. 8, 2000.

INDEX CATEGORIES	Charlie 1			Charlie 3			*	Northeast Service Area		
	2001	2002	% Change	2001	2002	% Change		2001	2002	% Change
MURDER & NON-NEGLIGENT MANSLAUGHTER	0	0	ERR	0	0	ERR	*	0	0	ERR
RAPE	2	0	-100.0%	1	2	100.0%	*	3	2	-33.3%
ACTUAL	2	0	-100.0%	1	2	100.0%	*	3	2	-33.3%
ATTEMPTED	0	0	ERR	0	0	ERR	*	0	0	ERR
ROBBERY	16	22	37.5%	15	23	53.3%	*	31	45	45.2%
ARMED	12	17	41.7%	13	20	53.8%	*	25	37	48.0%
STRONG-ARM	4	5	25.0%	2	3	50.0%	*	6	8	33.3%
AGGRAVATED ASSAULT	30	31	3.3%	20	28	40.0%	*	50	59	18.0%
BURGLARY	100	95	-5.0%	68	91	33.8%	*	168	186	10.7%
RESIDENTIAL	67	61	-9.0%	51	67	31.4%	*	118	128	8.5%
COMMERCIAL	33	34	3.0%	17	24	41.2%	*	50	58	16.0%
LARCENY	327	309	-5.5%	149	175	17.4%	*	476	484	1.7%
FROM AUTO	135	165	22.2%	75	87	16.0%	*	210	252	20.0%
BICYCLE	1	1	0.0%	2	0	-100.0%	*	3	1	-66.7%
SHOPLIFTING	24	43	79.2%	10	16	60.0%	*	34	59	73.5%
OTHERS	167	100	-40.1%	62	72	16.1%	*	229	172	-24.9%
VEHICLE THEFT	35	24	-31.4%	47	36	-23.4%	*	82	60	-26.8%
ARSON	3	5	66.7%	2	4	100.0%	*	5	9	80.0%
TOTALS	513	486	-5.3%	302	359	18.9%	*	815	845	3.7%
VIOLENT	48	53	10.4%	36	53	47.2%	*	84	106	26.2%
PROPERTY	465	433	-6.9%	266	306	15.0%	*	731	739	1.1%

Index Offenses Reported by District and Service Area of Occurrence

Central Service Area: January, 2001-2002

This data is based on the district configuration adopted Nov. 8, 2000.

INDEX CATEGORIES	David 1			David 2			*	Central Service Area		
	2001	2002	% Change	2001	2002	% Change		2001	2002	% Change
MURDER & NON-NEGLIGENT MANSLAUGHTER	0	0	ERR	1	2	100.0%	*	1	2	100.0%
RAPE	2	1	-50.0%	0	0	ERR	*	2	1	-50.0%
ACTUAL	2	1	-50.0%	0	0	ERR	*	2	1	-50.0%
ATTEMPTED	0	0	ERR	0	0	ERR	*	0	0	ERR
ROBBERY	9	9	0.0%	19	16	-15.8%	*	28	25	-10.7%
ARMED	5	3	-40.0%	15	15	0.0%	*	20	18	-10.0%
STRONG-ARM	4	6	50.0%	4	1	-75.0%	*	8	7	-12.5%
AGGRAVATED ASSAULT	18	17	-5.6%	37	34	-8.1%	*	55	51	-7.3%
BURGLARY	31	44	41.9%	50	54	8.0%	*	81	98	21.0%
RESIDENTIAL	16	18	12.5%	34	38	11.8%	*	50	56	12.0%
COMMERCIAL	15	26	73.3%	16	16	0.0%	*	31	42	35.5%
LARCENY	197	189	-4.1%	101	88	-12.9%	*	298	277	-7.0%
FROM AUTO	72	84	16.7%	35	37	5.7%	*	107	121	13.1%
BICYCLE	0	1	ERR	0	0	ERR	*	0	1	ERR
SHOPLIFTING	4	7	75.0%	12	4	-66.7%	*	16	11	-31.3%
OTHERS	121	97	-19.8%	54	47	-13.0%	*	175	144	-17.7%
VEHICLE THEFT	14	20	42.9%	25	38	52.0%	*	39	58	48.7%
ARSON	0	1	ERR	1	3	200.0%	*	1	4	300.0%
TOTALS	271	281	3.7%	234	235	0.4%	*	505	516	2.2%
VIOLENT	29	27	-6.9%	57	52	-8.8%	*	86	79	-8.1%
PROPERTY	242	254	5.0%	177	183	3.4%	*	419	437	4.3%

Index Offenses Reported by District and Service Area of Occurrence

East Service Area: January, 2001-2002

This data is based on the district configuration adopted Nov. 8, 2000.

INDEX_CATEGORIES	Charlie_2			David_3			*	East Service Area		
	2001	2002	% Change	2001	2002	% Change		2001	2002	% Change
MURDER & NON-NEGLIGENT MANSLAUGHTER	0	0	ERR	0	0	ERR	*	0	0	ERR
RAPE	4	3	-25.0%	1	0	-100.0%	*	5	3	-40.0%
ACTUAL	3	2	-33.3%	1	0	-100.0%	*	4	2	-50.0%
ATTEMPTED	1	1	0.0%	0	0	ERR	*	1	1	0.0%
ROBBERY	26	43	65.4%	39	25	-35.9%	*	65	68	4.6%
ARMED	20	34	70.0%	32	23	-28.1%	*	52	57	9.6%
STRONG-ARM	6	9	50.0%	7	2	-71.4%	*	13	11	-15.4%
AGGRAVATED ASSAULT	20	32	60.0%	24	49	104.2%	*	44	81	84.1%
BURGLARY	49	99	102.0%	51	53	3.9%	*	100	152	52.0%
RESIDENTIAL	39	88	125.6%	28	26	-7.1%	*	67	114	70.1%
COMMERCIAL	10	11	10.0%	23	27	17.4%	*	33	38	15.2%
LARCENY	196	191	-2.6%	107	110	2.8%	*	303	301	-0.7%
FROM AUTO	47	72	53.2%	49	56	14.3%	*	96	128	33.3%
BICYCLE	1	0	-100.0%	1	1	0.0%	*	2	1	-50.0%
SHOPLIFTING	41	60	46.3%	2	11	450.0%	*	43	71	65.1%
OTHERS	107	59	-44.9%	55	42	-23.6%	*	162	101	-37.7%
VEHICLE THEFT	44	36	-18.2%	48	33	-31.3%	*	92	69	-25.0%
ARSON	6	1	-83.3%	2	1	-50.0%	*	8	2	-75.0%
TOTALS	345	405	17.4%	272	271	-0.4%	*	617	676	9.6%
VIOLENT	50	78	56.0%	64	74	15.6%	*	114	152	33.3%
PROPERTY	295	327	10.8%	208	197	-5.3%	*	503	524	4.2%

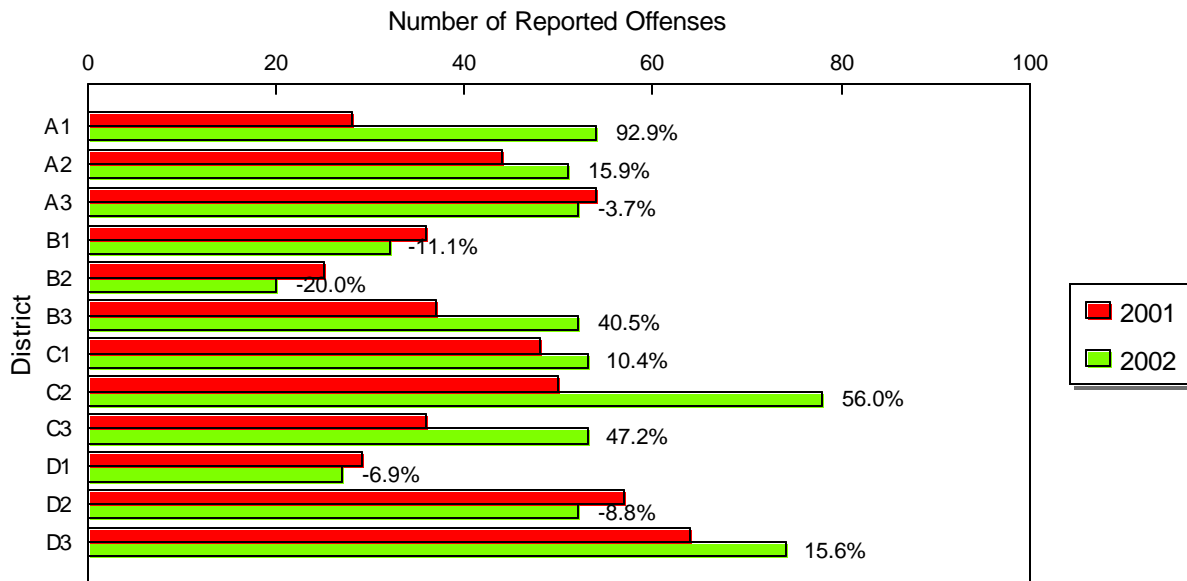
Index Offenses Reported by District and Service Area of Occurrence

South Service Area: January, 2001-2002

This data is based on the district configuration adopted Nov. 8, 2000.

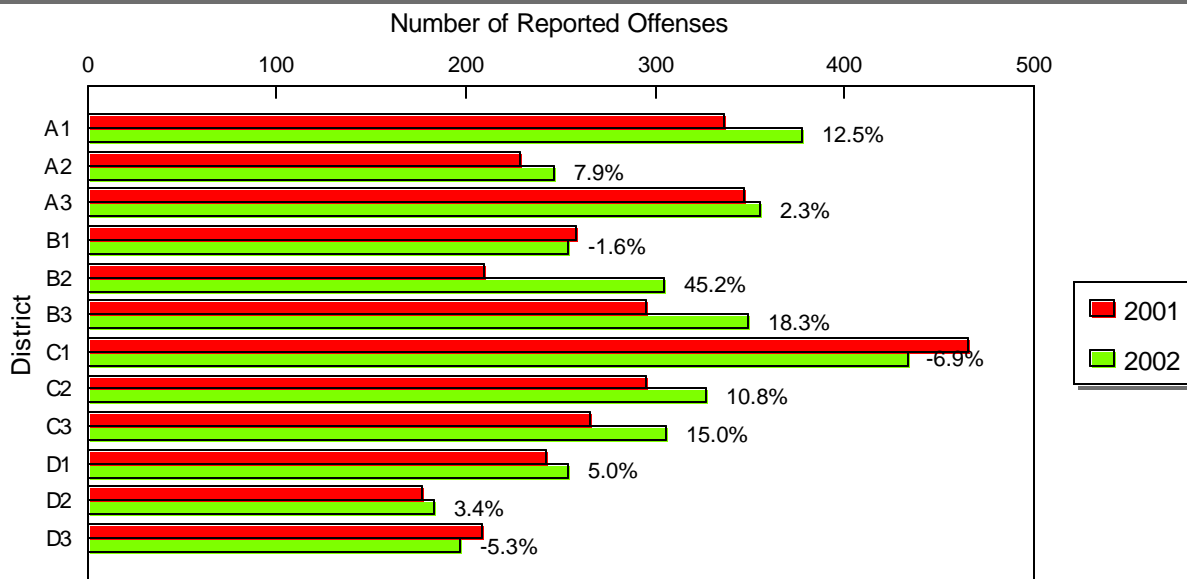
INDEX_CATEGORIES	Adam_1			Baker_2			*	South Service Area		
	2001	2002	% Change	2001	2002	% Change		2001	2002	% Change
MURDER & NON-NEGLIGENT MANSLAUGHTER	0	2	ERR	0	0	ERR	*	0	2	ERR
RAPE	0	2	ERR	1	1	0.0%	*	1	3	200.0%
ACTUAL	0	1	ERR	1	1	0.0%	*	1	2	100.0%
ATTEMPTED	0	1	ERR	0	0	ERR	*	0	1	ERR
ROBBERY	8	15	87.5%	11	10	-9.1%	*	19	25	31.6%
ARMED	5	10	100.0%	8	9	12.5%	*	13	19	46.2%
STRONG-ARM	3	5	66.7%	3	1	-66.7%	*	6	6	0.0%
AGGRAVATED ASSAULT	20	35	75.0%	13	9	-30.8%	*	33	44	33.3%
BURGLARY	42	102	142.9%	53	94	77.4%	*	95	196	106.3%
RESIDENTIAL	19	48	152.6%	42	51	21.4%	*	61	99	62.3%
COMMERCIAL	23	54	134.8%	11	43	290.9%	*	34	97	185.3%
LARCENY	250	226	-9.6%	141	177	25.5%	*	391	403	3.1%
FROM AUTO	110	119	8.2%	77	92	19.5%	*	187	211	12.8%
BICYCLE	1	0	-100.0%	0	2	ERR	*	1	2	100.0%
SHOPLIFTING	26	39	50.0%	7	15	114.3%	*	33	54	63.6%
OTHERS	113	68	-39.8%	57	68	19.3%	*	170	136	-20.0%
VEHICLE THEFT	39	49	25.6%	16	31	93.8%	*	55	80	45.5%
ARSON	5	1	-80.0%	0	3	ERR	*	5	4	-20.0%
TOTALS	364	432	18.7%	235	325	38.3%	*	599	757	26.4%
VIOLENT	28	54	92.9%	25	20	-20.0%	*	53	74	39.6%
PROPERTY	336	378	12.5%	210	305	45.2%	*	546	683	25.1%

**Violent Index Offenses by District Year-to-Date
Charlotte-Mecklenburg Police Dept. : Jan., 2001-2002**



(Year-to-date through January)
Based on district configuration from redistricting on Nov. 8, 2000

**Property Index Offenses by District Year-to-Date
Charlotte-Mecklenburg Police Dept. : Jan., 2001-2002**



(Year-to-date through January)
Based on district configuration from redistricting on Nov. 8, 2000

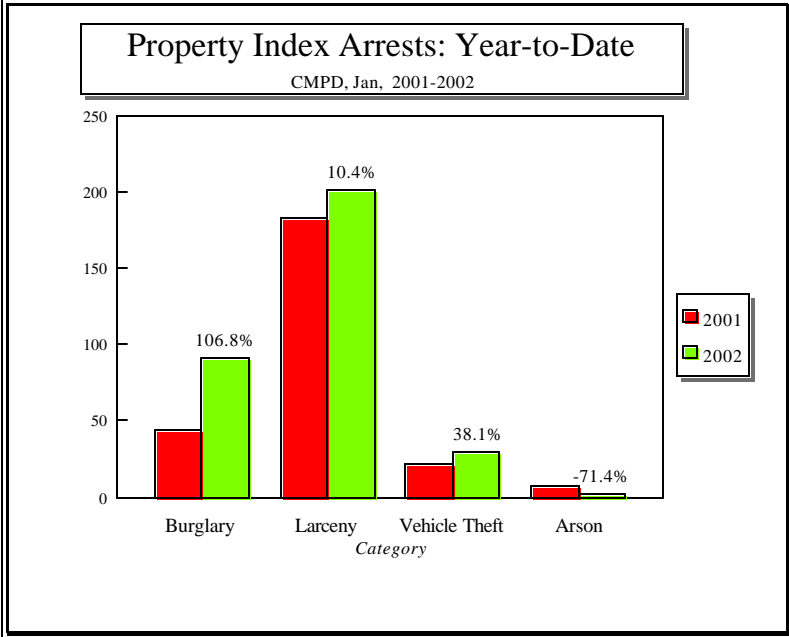
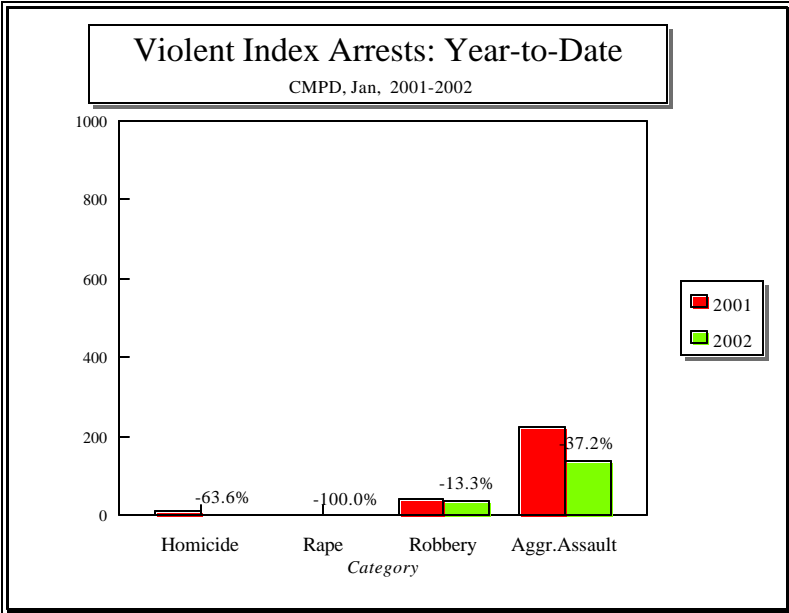
**Arrests by Charlotte-Mecklenburg Police Department
January, 2001-2002**

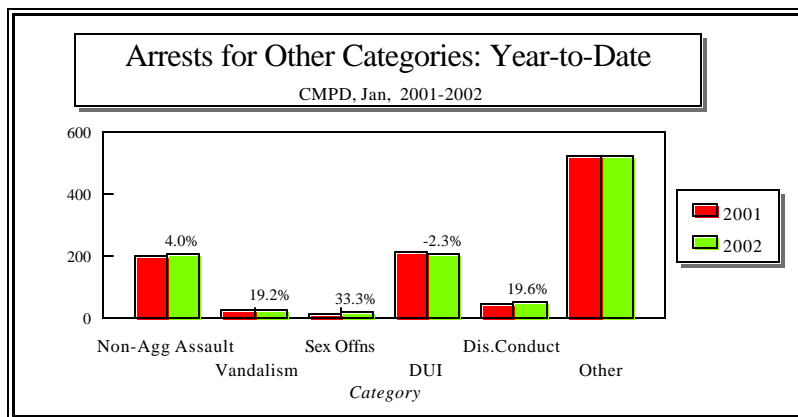
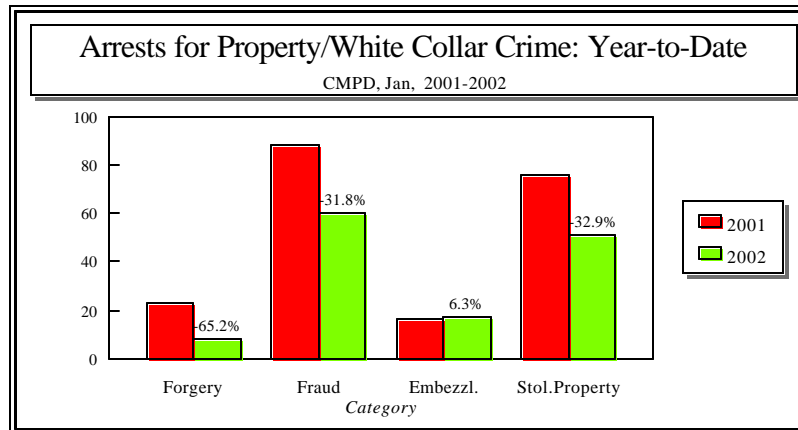
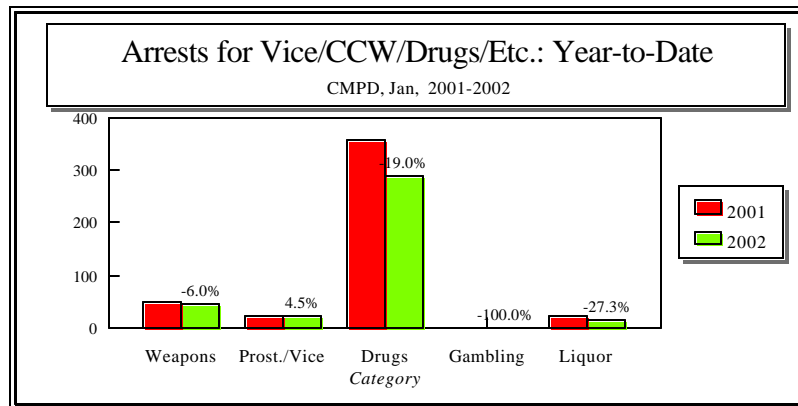
CATEGORY	ADULTS (AGE 18 & OLDER):			JUVENILES (UNDER 18):			TOTAL ARRESTS:		
	2001 Y-T-D	2002 Y-T-D	% CHANGE	2001 Y-T-D	2002 Y-T-D	% CHANGE	2001 Y-T-D	2002 Y-T-D	% CHANGE
Murder/Non-Negligent Manslaughter	8	4	-50.0%	3	0	-100.0%	11	4	-63.6%
Negligent & Vehicular Manslaughter	1	0	-100.0%	0	0	N/A	1	0	-100.0%
Rape	3	0	-100.0%	0	0	N/A	3	0	-100.0%
Robbery	30	26	-13.3%	15	13	-13.3%	45	39	-13.3%
Aggravated Assault	202	118	-41.6%	21	22	4.8%	223	140	-37.2%
Burglary	32	56	75.0%	12	35	191.7%	44	91	106.8%
Larceny	133	155	16.5%	50	47	-6.0%	183	202	10.4%
Vehicle Theft	15	15	0.0%	6	14	133.3%	21	29	38.1%
Non-Aggravated Assault	147	128	-12.9%	54	81	50.0%	201	209	4.0%
Arson	1	0	-100.0%	6	2	-66.7%	7	2	-71.4%
Forgery/Counterfiet	22	8	-63.6%	1	0	-100.0%	23	8	-65.2%
Fraud	87	60	-31.0%	1	0	-100.0%	88	60	-31.8%
Embezzlement	10	16	60.0%	6	1	-83.3%	16	17	6.3%
Stolen Property	61	40	-34.4%	15	11	-26.7%	76	51	-32.9%
Vandalism	22	15	-31.8%	4	16	300.0%	26	31	19.2%
Weapons	46	43	-6.5%	4	4	0.0%	50	47	-6.0%
Prostitution	22	23	4.5%	0	0	N/A	22	23	4.5%
Sex Offenses	14	17	21.4%	1	3	200.0%	15	20	33.3%
Drugs	328	257	-21.6%	29	32	10.3%	357	289	-19.0%
Gambling	1	0	-100.0%	0	0	N/A	1	0	-100.0%
Offenses vs. Family	14	18	28.6%	0	0	N/A	14	18	28.6%
DUI	211	207	-1.9%	2	1	-50.0%	213	208	-2.3%
Liquor	22	16	-27.3%	0	0	N/A	22	16	-27.3%
Disorder Conduct	40	39	-2.5%	6	16	166.7%	46	55	19.6%
Other Non-Traffic	461	444	-3.7%	46	58	26.1%	507	502	-1.0%
VIOLENT INDEX*	243	148	-39.1%	39	35	-10.3%	282	183	-35.1%
PROPERTY INDEX**	181	226	24.9%	74	98	32.4%	255	324	27.1%
INDEX SUBTOTAL	424	374	-11.8%	113	133	17.7%	537	507	-5.6%
PART 2 SUBTOTAL***	1509	1331	-11.8%	169	223	32.0%	1678	1554	-7.4%
TOTAL	1933	1705	-11.8%	282	356	26.2%	2215	2061	-7.0%

*Violent Index includes murder and non-negligent manslaughter, rape, robbery, and aggravated assault.

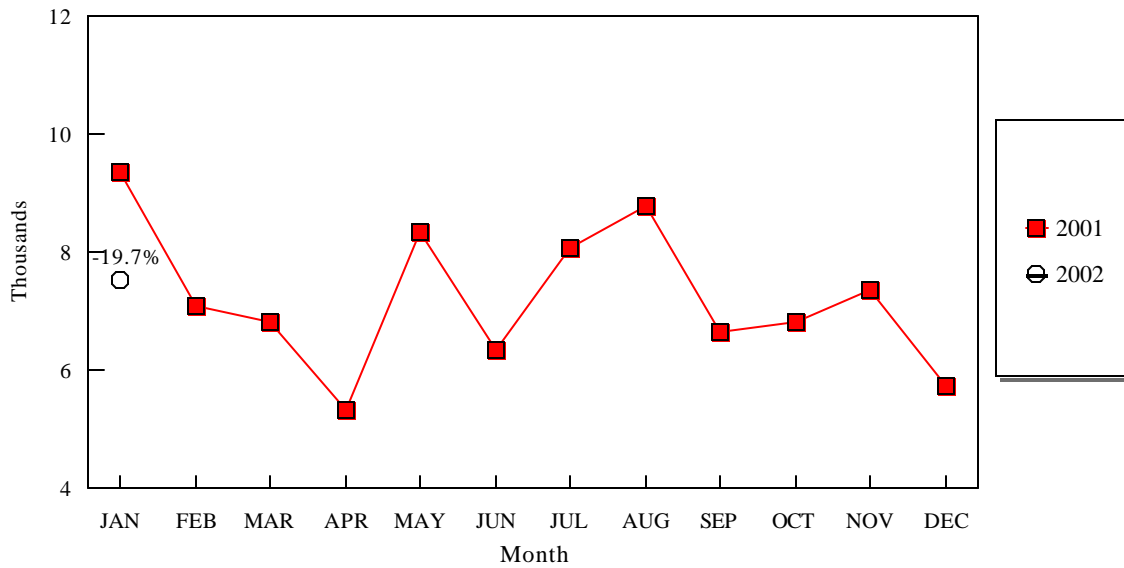
**Property Index includes burglary, larceny, vehicle theft, and arson.

***Part 2 crimes include non-traffic crimes not counted in the Index totals.



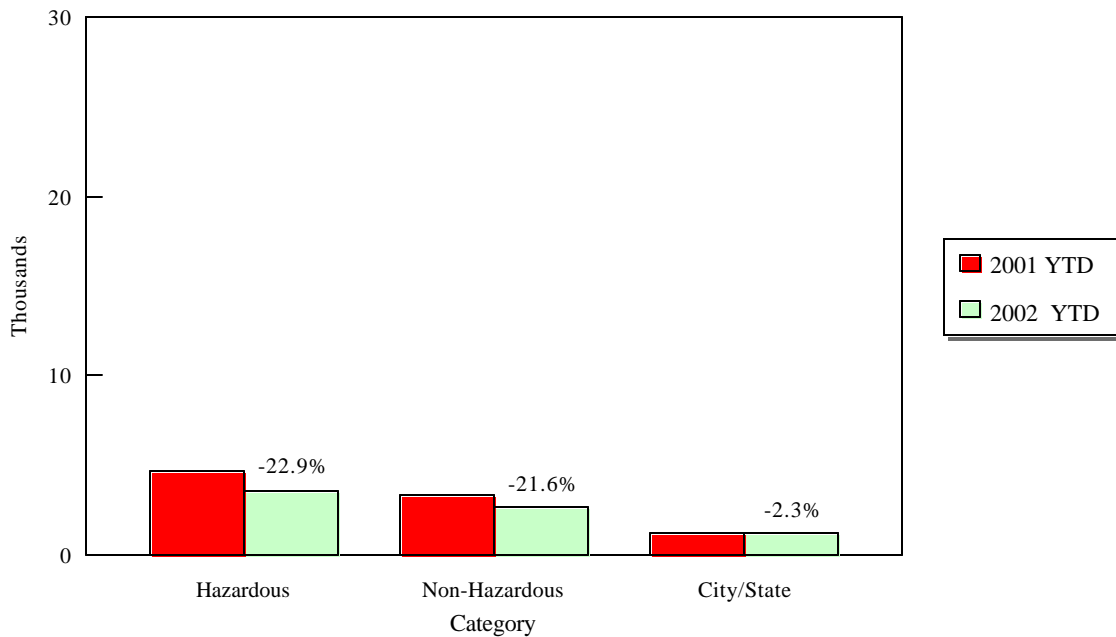


Total Citation Enforcement by Month Charlotte-Mecklenburg Police Dept.: 2001-2002



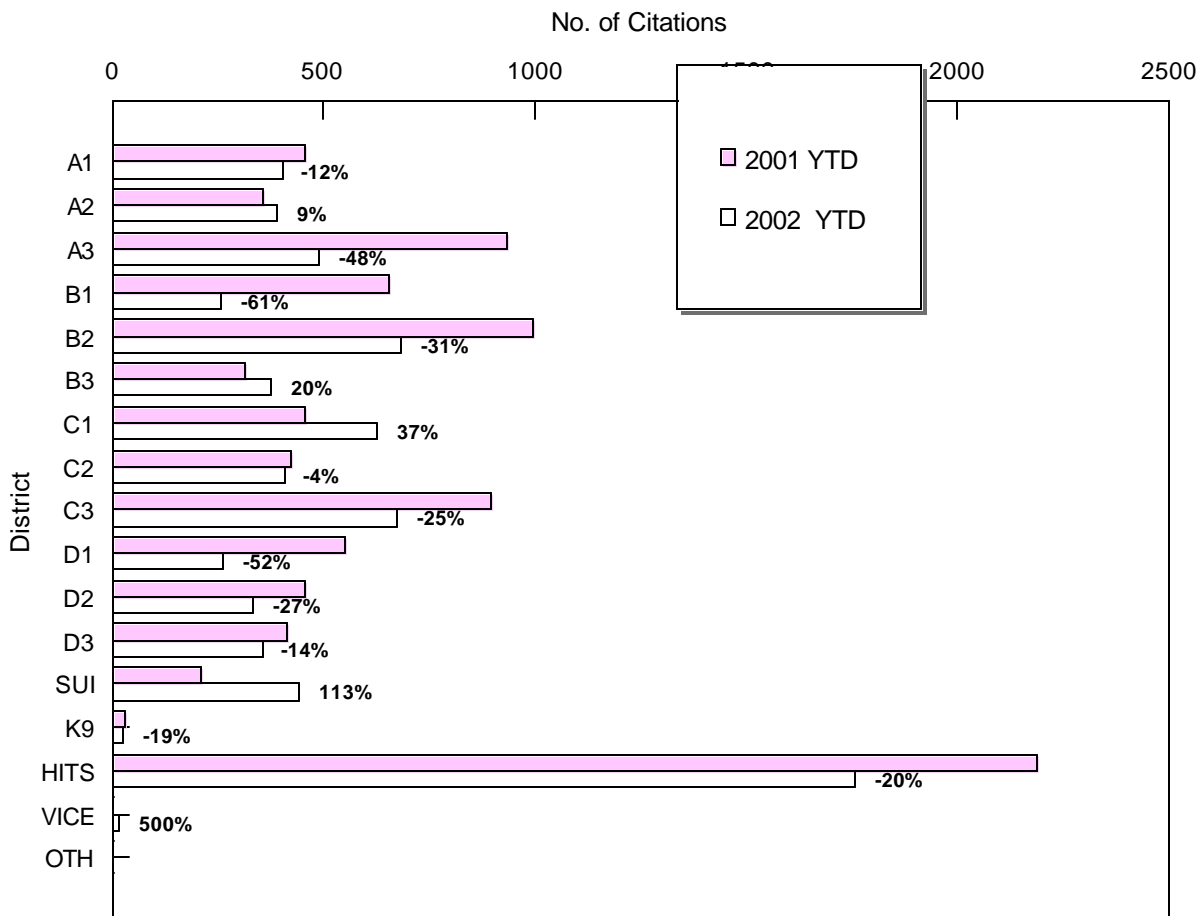
(includes Hazardous, Non-Hazardous, and City/State Citations)

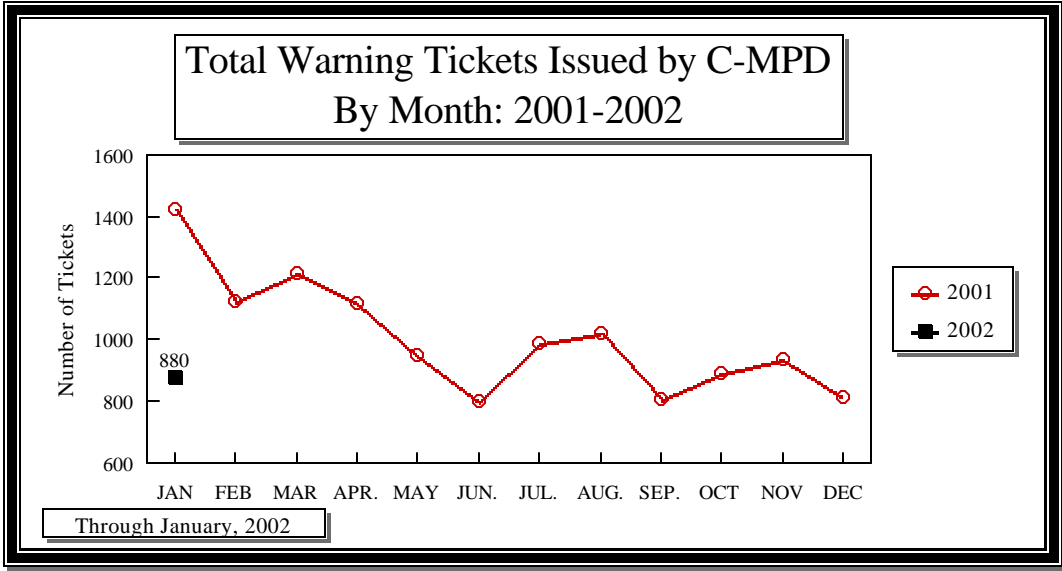
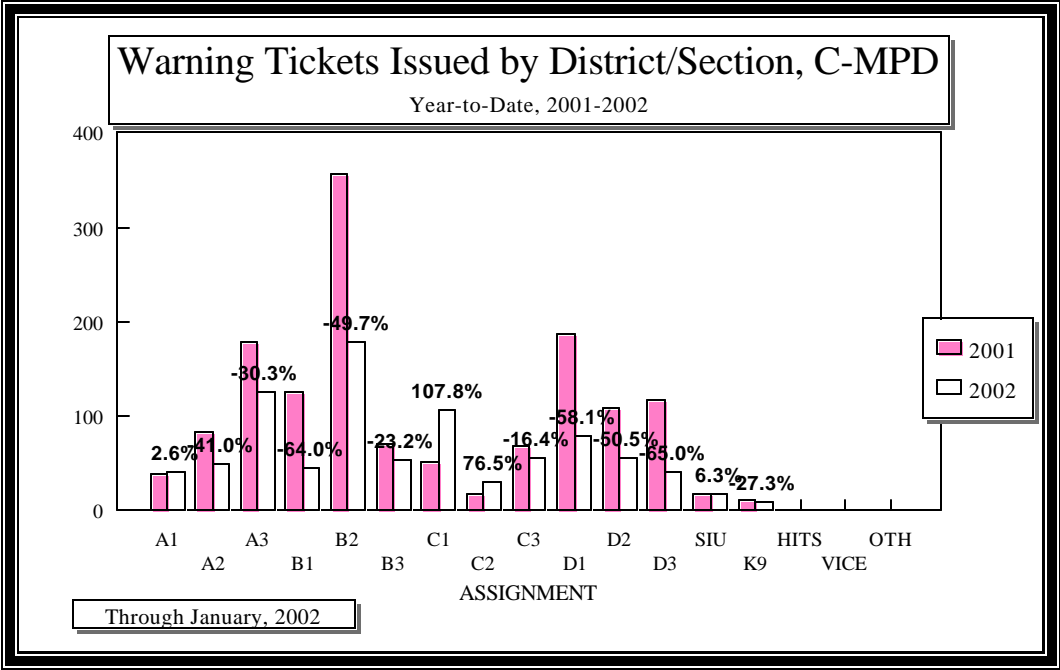
CMPD District Citation Enforcement by Category January, 2001-2002



Citations Issued Year-to-Date by C-MPD Districts/Units

January, 2001-2002





Warning Tickets Issued by C-MPD: Jan, 2001-2002

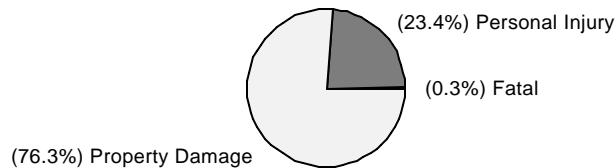
	2001	2002	% Change
Total Warning Tickets	1424	880	-38.2%

**TRAFFIC COLLISION REPORTS
CHARLOTTE-MECKLENBURG POLICE DEPARTMENT
Jan, 2001-2002**

TYPE	2001	2002	% CHANGE
Fatal Collisions*	5	7	40.0%
Vehicle Occupants Killed*	4	5	25.0%
Pedestrians Killed*	1	2	100.0%
Personal Injury Collisions	695	616	-11.4%
Property Damage Collisions	2094	2004	-4.3%
TOTAL Collisions	2794	2627	-6.0%

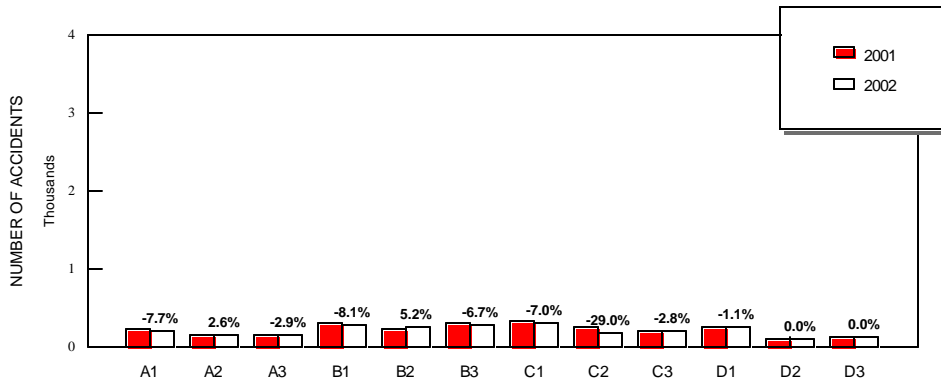
*The number of fatal collisions and the number of persons killed in those accidents is taken from the HITS unit files. Their records are updated for deaths that occur after the initial report is filed. These numbers also include deaths where a medical condition (e.g., heart attack) may later be found to have caused the accident and/or the death involved in the accident. Fatality figures published in earlier reports may not include these two types of cases and are therefore not directly comparable.

**TRAFFIC COLLISIONS REPORTED BY TYPE
CHARLOTTE-MECKLENBURG POLICE DEPARTMENT: 2002 (Year-to-Date)**



Includes accidents classed as fatal due to deaths after the initial report; injury and property determinations are based only on the data in the initial report at the time of the accident.

**TRAFFIC COLLISIONS REPORTED BY CHARLOTTE-MECKLENBURG POLICE DEPARTMENT
BY LOCATION OF ACCIDENT (DISTRICT): 2001-2002 (Year-to-Date)**



Year-to-Date through January

Uniform Crime Reporting Procedures:

The Charlotte-Mecklenburg Police Department reports offense and arrest statistics in accordance with standard Uniform Crime Reporting (UCR) guidelines. UCR policy states that any adjustments to previous months can be made on the current month's report:

...In tabulating crime counts, an agency may find that offense totals for past months require adjustments due to developments in the investigation or other handling of the matter. It may be necessary to adjust totals reported to UCR for the past month or prior months. Needed adjustments can be made on the current month's report and do not affect the reliability of the figures in that such adjustments tend to equalize each other from month to month over a period of time.

- "Uniform Crime Reporting Handbook," FBI, 1984, p. 42-43

We are required to report crime monthly to the UCR program, and we do therefore make an effort to process monthly changes in a timely manner. However, occasionally due to the review and processing required for reclassifying, unfounding or clearing cases, the current month's totals may reflect the processing of a backlog of these changes from previous months.

Users of the data are cautioned that conclusions about substantial changes in crime trends or in clearance rates based on only a single month's data or trend may reflect some of these adjustments. For this reason, in addition to the monthly and year-to-date trends on Page 1, the monthly report routinely includes a comparison for the previous 12 months (p. 4), as well as graphs that provide seasonal/monthly comparisons over a five year period (p. 5-8).

The monthly report was composed with the assistance of Cassandra Chestnut, whose help with data entry is appreciated.

V. L. Sorban
Research, Planning & Analysis Bureau