



**CHARLOTTE-MECKLENBURG POLICE DEPARTMENT
ANNUAL SUMMARY: 2004**

**Darrel Stephens
Chief of Police**

Research, Planning and Analysis Division

Feb. 16, 2005

Acknowledgements

Offenses, clearances, and arrests are classified and counted in accordance with the national Uniform Crime Reporting (UCR) program.

The jurisdiction population for 2000 was estimated at 625,810 by using the 2000 Census population for the county and subtracting the populations for the five incorporated towns with their own police services. For consistency over the current decade, the populations of the jurisdiction after Census 2000 are now based on Planning Commission estimates published in July of each year. The jurisdiction population for 2003 does not include Mint Hill, although the crime totals do include crimes occurring in Mint Hill during the first half of the year prior to July 1, 2003.

Data in this report was compiled with the assistance of staff in several units. Much of it was extracted from the automated records systems, monthly UCR reports, and other monthly summary reports of traffic collisions and citation/warning ticket records entered by the CMPD Records Bureau.. The district map was created by Monica Nguyen in the department's GIS system. Frank McDowell assisted in retrieving data from the mainframe files. Data for individual CMPD divisions was supplied by Recruitment, International Relations, Communications, Non-Emergency Police Services, HITS, Bomb Squad, Animal Control, K-9, SWAT, Aviation, Volunteer Program, and Research, Planning and Analysis.

Veronica L. Sorban
Research, Planning and Analysis Division
February 16, 2005

Table of Contents

Index Offenses Reported by the Charlotte-Mecklenburg Police Department: 2003-2004	1
Index Offenses by Type: 2004	1
Index Offenses: 2000-2004	2
Index Offenses: 2000-2004 (Bar Chart)	3
Index Offense Rates per 100,000 Population: 2000-2004	4
Annual Percentage Changes in Index Offenses and Rates: 2000-2004 (Line Chart)	5
Index Offenses Reported by Month: 2000-2004	6
Percentage Changes in Cumulative Monthly Total Index Offenses: 2003-2004	6
Five Year Monthly Index Offenses by Category (Line Charts):	
Homicide	7
Rape	7
Robbery	8
Aggravated Assault	8
Residential Burglary	9
Commercial Burglary	9
Larceny	10
Larceny from Auto	10
Vehicle Theft	11
Arson	11
Index Clearances Reported by the Charlotte-Mecklenburg Police Department: 2003-2004	12
Division and Service Area Offense Totals: 2003-2004	
Map of Divisions and Service Area Boundaries	13
Index Offenses by Service Area and Division	14-16
Index Offenses by Service Areas: Violent vs. Property (Bar Chart)	17
Violent and Property Index Offenses by Division: 2002-2003 (Bar Chart)	18
Part 2 and Other Offenses Reported by the Charlotte-Mecklenburg Police Department	19
Non-Criminal Incidents Reported by the Charlotte-Mecklenburg Police Department	19
Arrests Reported by the Charlotte-Mecklenburg Police Department: 2003-2004	20
Arrests by General Category (Bar Chart)	21
Arrests by Juvenile (Under 18 Years Old) and Adult (18 and Older) (Bar Chart)	21
Communications Division: 911 and Emergency Calls Received: 2004	22
Calls for Service: Citizen Initiated Calls for Service by Type	23
Traffic Collisions Reported by the Charlotte-Mecklenburg Police Department: 2003-2004	24
Traffic Collisions by Type: 2004 (Pie Chart)	24
Traffic Collisions by District: 2003-2004 (Bar Chart)	24
Citations Issued by the Charlotte-Mecklenburg Police Department: 2003-2004	25
Citations Enforcement by Issuing Unit : 2003-2004	26
Citations Issued by Month: 2003-2004	26
Warning Tickets Issued by Charlotte-Mecklenburg Police Department: 2003-2004	
Warning Tickets Issued by Month: 2003-2004 (Line Chart)	27

Warning Tickets Issued by Division: 2003-2004	27
Non-Emergency Police Services: Incident Reports by Division and Month: 2004	28
International Relations Unit: Activities by Type and Community Served: 2003-2004	29
Bomb Squad Callouts: 2004 by Activity Type	30
SWAT Deployments by District and Types: 2003-2004	31
SWAT Training Hours	31
K-9 Unit Activities by Type: 2003-2004	32
K-9 Unit Calls by Month	32
Recruitment Section: Applicants Processed and Hired in 2003 and 2004	33
Volunteer Program: Hours, Value of Service, and Service Group: 2002-2004	34
Animal Control Division Summary: Activities and Animal Status Summary	35
Animal Control Calls for Service by Month	35
Animal Control Citations Issued by Month	35
Aviation Unit Activities/Calls Summary by Type: 2004	36
Civil Emergency Unit Activities Summary: 2004	37
Intelligence Division Summary: 2003-2004	38
Passenger Vehicle for Hire Unit: 2002-2004	39
Appendix: Table of Index Crimes Reported by Charlotte Police/Charlotte Mecklenburg Police Departments: 1974-2004	i
Table of Index Offense Rates per 100,000 Population: 1974-2004	ii
Index Offense Rates per 100,000 Population: 1974-2004 (Bar Chart)	iii
Violent Index Offense Rates per 100,000 Population: 1974-2004 (Bar Chart)	iv
Property Index Offense Rates per 100,000 Population 1974-2004 (Bar Chart)	v
Uniform Crime Reporting Procedures	vi

**INDEX OFFENSES REPORTED TO THE CHARLOTTE-MECKLENBURG POLICE DEPARTMENT
2003-2004**

Index Categories	Number of Offenses:			Rate per Estimated 100,000 Population ¹ :		
	2003	2004	% Change	2003 Est. Pop. 674509 ¹	2004 Est. Pop. 695,487 ¹	% Change
HOMICIDE (MURDER & NON-NEGLIGENT MANSLAUGHTER)	66	60	-9.1% *	9.8	8.6	-11.8%
RAPE TOTAL	299	307	2.7% *	44.3	44.1	-0.4%
ACTUAL	266	277	4.1% *	39.4	39.8	1.0%
ATTEMPT	33	30	-9.1% *	4.9	4.3	-11.8%
ROBBERY TOTAL	2688	2786	3.6% *	398.5	400.6	0.5%
ARMED	2121	2107	-0.7% *	314.5	303.0	-3.7%
STRONG-ARM	567	679	19.8% *	84.1	97.6	16.1%
AGGRAVATED ASSAULT TOTAL	4137	4118	-0.5% *	613.3	592.1	-3.5%
BURGLARY TOTAL	11066	12021	8.6% *	1640.6	1728.4	5.4%
RESIDENTIAL	7876	8441	7.2% *	1167.7	1213.7	3.9%
COMMERCIAL	3190	3580	12.2% *	472.9	514.7	8.8%

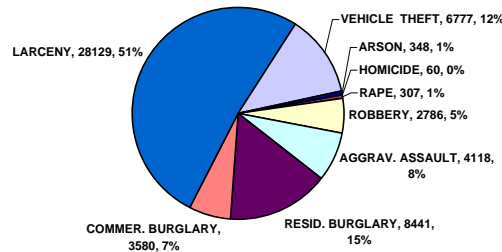
FORCE	8739	9774	11.8% *	1295.6	1405.3	8.5%
NO FORCE	1639	1520	-7.3% *	243.0	218.6	-10.1%
ATTEMPT	678	727	7.2% *	100.5	104.5	4.0%
LARCENY TOTAL	26628	28129	5.6% *	3947.8	4044.5	2.5%
\$200 AND OVER	13209	13706	3.8% *	1958.3	1970.7	0.6%
\$50 TO \$200	4800	5240	9.2% *	711.6	753.4	5.9%
UNDER \$50	8619	9183	6.5% *	1277.8	1320.4	3.3%

FROM AUTO	14044	14511	3.3% *	2082.1	2086.5	0.2%
BICYCLE	206	248	20.4% *	30.5	35.7	16.8%
SHOPLIFTING	2777	2866	3.2% *	411.7	412.1	0.1%
OTHERS	9601	10504	9.4% *	1423.4	1510.3	6.1%
VEHICLE THEFT TOTAL	6840	6777	-0.9% *	1014.1	974.4	-3.9%
ARSON TOTAL	300	348	16.0% *	44.5	50.0	12.5%
TOTALS	52024	54546	4.8% *	7712.9	7842.8	1.7%
VIOLENT ²	7190	7271	1.1% *	1066.0	1045.5	-1.9%
PROPERTY ²	44834	47275	5.4% *	6646.9	6797.4	2.3%

¹Population estimates for 2002 and 2003 have been adjusted to use the Planning Commission's annual estimates. The annual population for 2003 does not include Mint Hill, although the crime totals do include crimes occurring in Mint Hill during the first half of the year prior to July 1, 2003.

²Violent Index includes homicide, rape, robbery, and aggravated assault; property Index includes burglary, larceny, vehicle theft and arson.

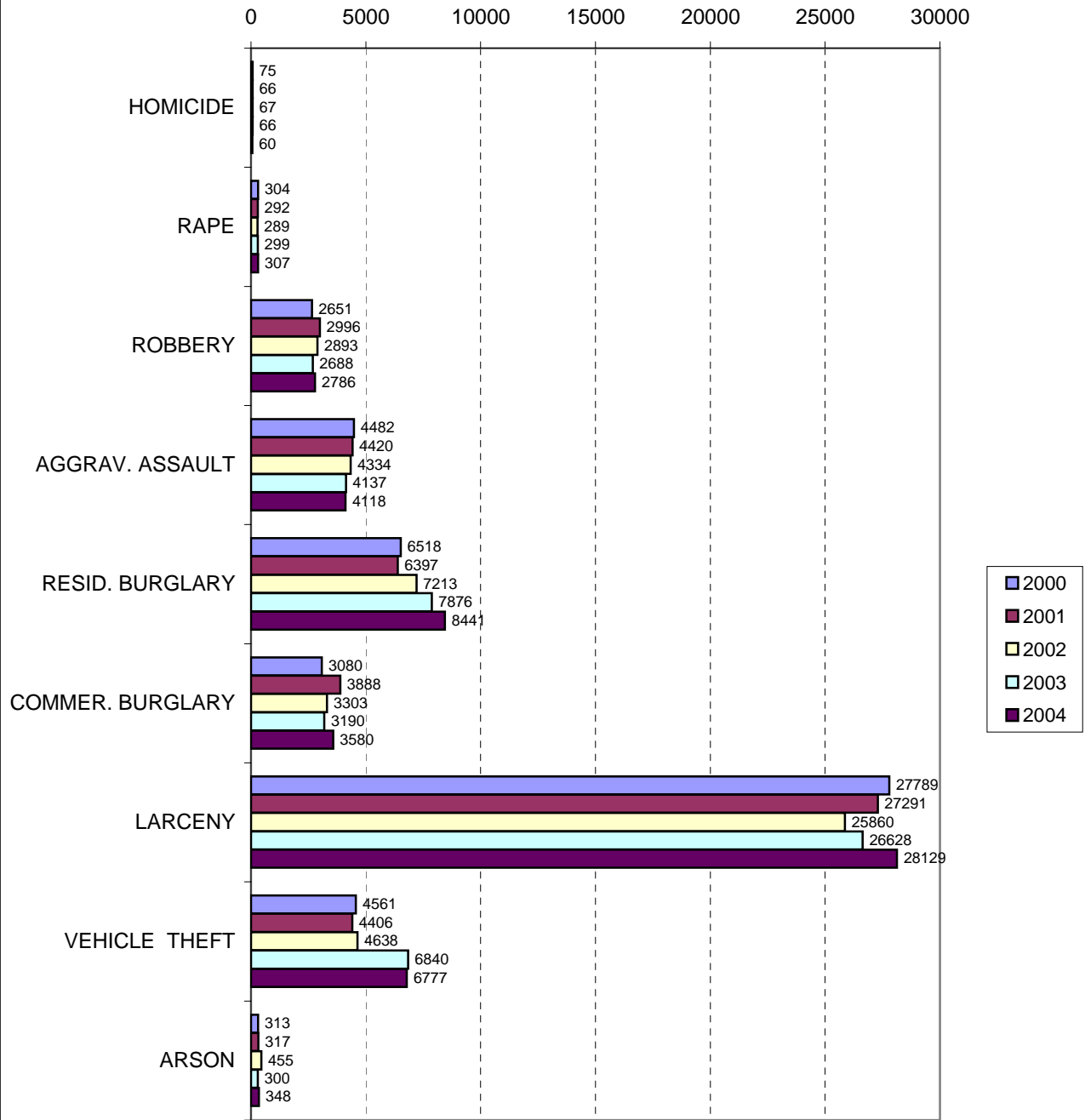
**Reported Index Offenses By Charlotte-Mecklenburg Police Dept.
By Type, Number, and Percentage of Total: 2004**



**INDEX OFFENSES REPORTED TO THE CHARLOTTE-MECKLENBURG POLICE DEPARTMENT
FIVE YEAR TRENDS: 2000-2004**

<u>Index Categories</u>	<u>2000</u>	<u>2001</u>	<u>% Change from Previous Year</u>	<u>2002</u>	<u>% Change from Previous Year</u>	<u>2003</u>	<u>% Change from Previous Year</u>	<u>2004</u>	<u>% Change from Previous Year</u>	<u>% Change from 2000</u>
HOMICIDE	75	66	-12.0% *	67	1.5% *	66	-1.5% *	60	-9.1% * *	-20.0%
RAPE	304	292	-3.9% *	289	-1.0% *	299	3.5% *	307	2.7% * *	1.0%
ROBBERY	2651	2996	13.0% *	2893	-3.4% *	2688	-7.1% *	2786	3.6% * *	5.1%
AGGRAVATED ASSAULT	4482	4420	-1.4% *	4334	-1.9% *	4137	-4.5% *	4118	-0.5% * *	-8.1%
BURGLARY	9598	10285	7.2% *	10516	2.2% *	11066	5.2% *	12021	8.6% * *	25.2%
RESIDENTIAL	6518	6397	-1.9% *	7213	12.8% *	7876	9.2% *	8441	7.2% * *	29.5%
COMMERCIAL	3080	3888	26.2% *	3303	-15.0% *	3190	-3.4% *	3580	12.2% * *	16.2%
LARCENY	27789	27291	-1.8% *	25860	-5.2% *	26628	3.0% *	28129	5.6% * *	1.2%
FROM AUTO	12461	11966	-4.0% *	13171	10.1% *	14044	6.6% *	14511	3.3% * *	16.5%
BICYCLE	252	175	-30.6% *	173	-1.1% *	206	19.1% *	248	20.4% * *	-1.6%
SHOPLIFTING	3052	3477	13.9% *	3182	-8.5% *	2777	-12.7% *	2866	3.2% * *	-6.1%
OTHERS	12024	11673	-2.9% *	9334	-20.0% *	9601	2.9% *	10504	9.4% * *	-12.6%
VEHICLE THEFT	4561	4406	-3.4% *	4638	5.3% *	6840	47.5% *	6777	-0.9% * *	48.6%
ARSON	313	317	1.3% *	455	43.5% *	300	-34.1% *	348	16.0% * *	11.2%
TOTAL INDEX	49773	50073	0.6% *	49052	-2.0% *	52024	6.1% *	54546	4.8% * *	9.6%
VIOLENT PROPERTY	7512 42261	7774 42299	3.5% * 0.1% *	7583 41469	-2.5% * -2.0% *	7190 44834	-5.2% * 8.1% *	7271 47275	1.1% * * 5.4% * *	-3.2% 11.9%

**Index Offenses Reported by Month
Charlotte-Mecklenburg Police Department:
Five Year Trends: 2000-2004**

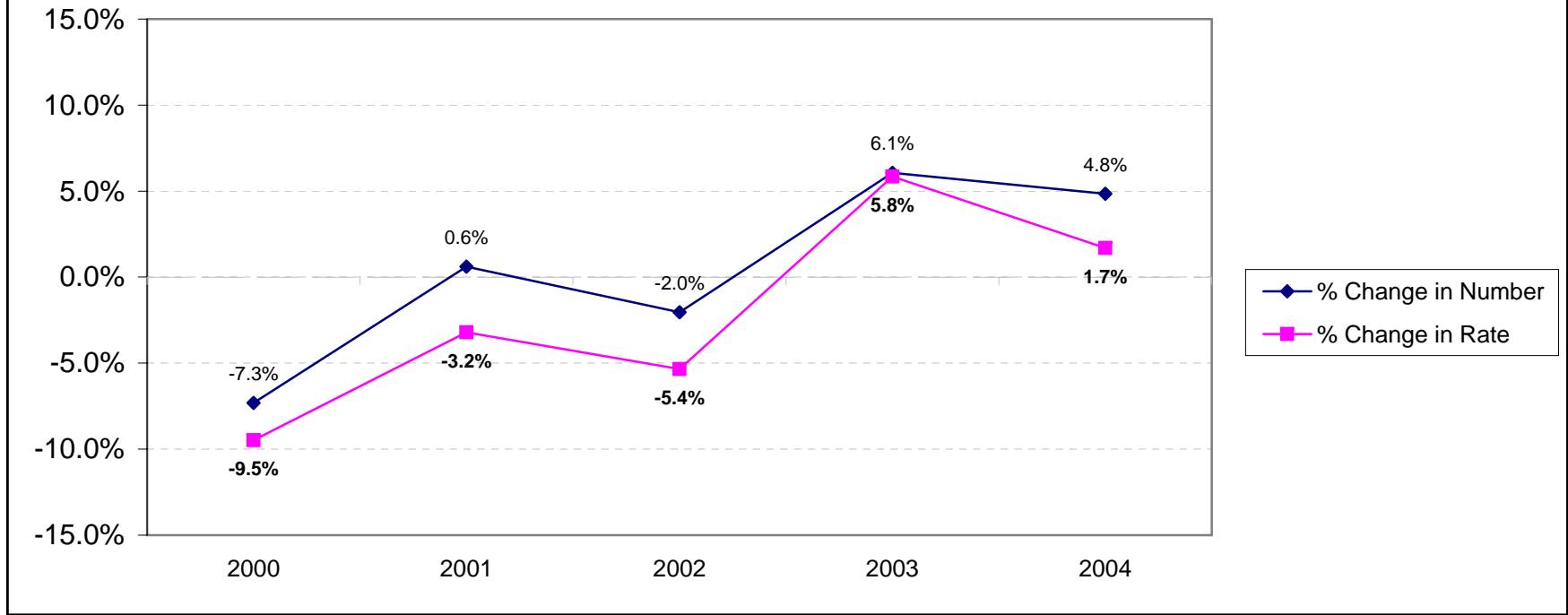


**INDEX OFFENSE RATES PER 100,000 POPULATION¹ REPORTED BY THE CHARLOTTE-MECKLENBURG POLICE DEPARTMENT
FIVE YEAR TRENDS: 2000-2004**

<u>Index Categories</u> (Est. Population ¹)	<u>2000</u> 625810	<u>2001</u> 650407	<u>% Change from</u> <u>Previous Year</u>	<u>2002</u> 673177	<u>% Change from</u> <u>Previous Year</u>	<u>2003</u> 674509	<u>% Change from</u> <u>Previous Year</u>	<u>2004</u> 695487	<u>% Change from</u> <u>Previous Year</u>	<u>% Change</u> <u>from 2000</u>
HOMICIDE	12.0	10.1	-15.3% *	10.0	-1.9% *	9.8	-1.7% *	8.6	-11.8% *	-28.0%
RAPE	48.6	44.9	-7.6% *	42.9	-4.4% *	44.3	3.3% *	44.1	-0.4% *	-9.1%
ROBBERY	423.6	460.6	8.7% *	429.8	-6.7% *	398.5	-7.3% *	400.6	0.5% *	-5.4%
AGGRAVATED ASSAULT	716.2	679.6	-5.1% *	643.8	-5.3% *	613.3	-4.7% *	592.1	-3.5% *	-17.3%
BURGLARY	1533.7	1581.3	3.1% *	1562.1	-1.2% *	1640.6	5.0% *	1728.4	5.4% *	12.7%
RESIDENTIAL	1041.5	983.5	-5.6% *	1071.5	8.9% *	1167.7	9.0% *	1213.7	3.9% *	16.5%
COMMERCIAL	492.2	597.8	21.5% *	490.7	-17.9% *	472.9	-3.6% *	514.7	8.8% *	4.6%
LARCENY	4440.5	4196.0	-5.5% *	3841.5	-8.4% *	3947.8	2.8% *	4044.5	2.5% *	-8.9%
FROM AUTO	1991.2	1839.8	-7.6% *	1956.5	6.3% *	2082.1	6.4% *	2086.5	0.2% *	4.8%
BICYCLE	40.3	26.9	-33.2% *	25.7	-4.5% *	30.5	18.8% *	35.7	16.8% *	-11.4%
SHOPLIFTING	487.7	534.6	9.6% *	472.7	-11.6% *	411.7	-12.9% *	412.1	0.1% *	-15.5%
OTHERS	1921.3	1794.7	-6.6% *	1386.6	-22.7% *	1423.4	2.7% *	1510.3	6.1% *	-21.4%
VEHICLE THEFT	728.8	677.4	-7.1% *	689.0	1.7% *	1014.1	47.2% *	974.4	-3.9% *	33.7%
ARSON	50.0	48.7	-2.6% *	67.6	38.7% *	44.5	-34.2% *	50.0	12.5% *	0.0%
TOTAL INDEX	7953.4	7698.7	-3.2% *	7286.6	-5.4% *	7712.9	5.8% *	7842.8	1.7% *	-1.4%
VIOLENT	1200.4	1195.3	-0.4% *	1126.4	-5.8% *	1066.0	-5.4% *	1045.5	-1.9% *	-12.9%
PROPERTY	6753.0	6503.5	-3.7% *	6160.2	-5.3% *	6646.9	7.9% *	6797.4	2.3% *	0.7%

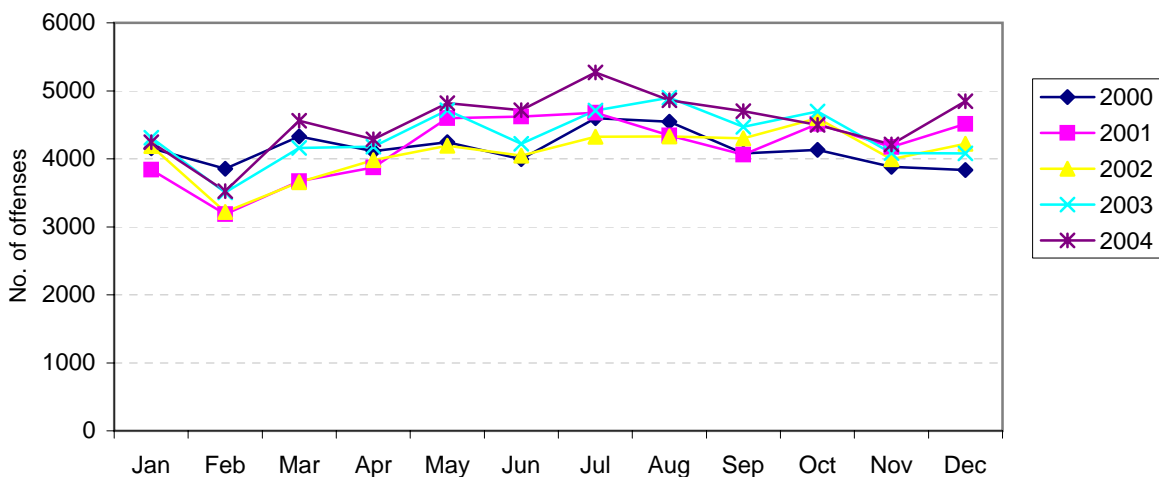
¹For consistency, the populations of the jurisdiction after Census 2000 are now based on Planning Commission estimates published in July each year; rate calculations for 2001-2002 may therefore may show slight differences from previous annual reports based on estimates from other sources. The population for 2003 does not include Mint Hill, although the crime totals do include crimes occurring in Mint Hill during the first half of the year prior to July 1, 2003.

Five Year Trends in Annual Percentage Change in Reported Index and in Rate per Population¹ in the Charlotte-Mecklenburg Police Jurisdiction: 2000-2004

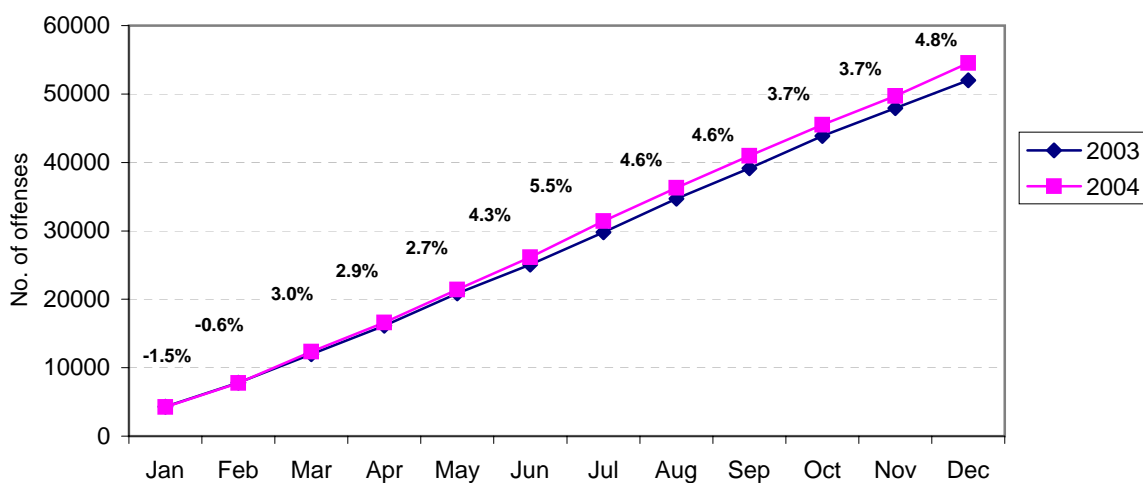


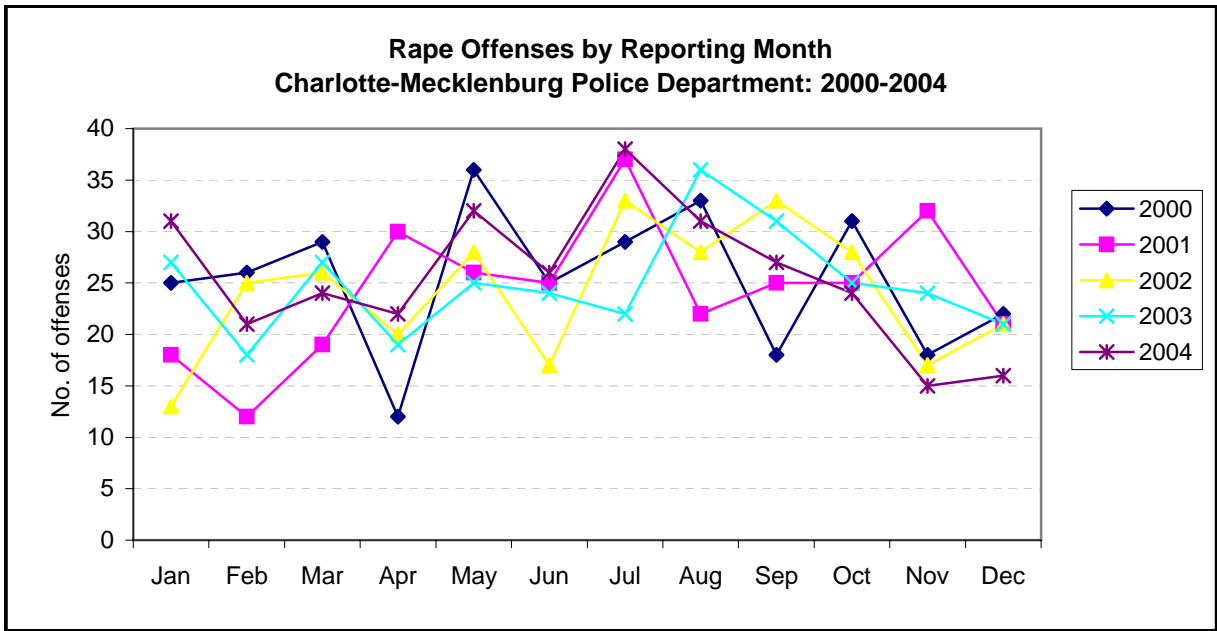
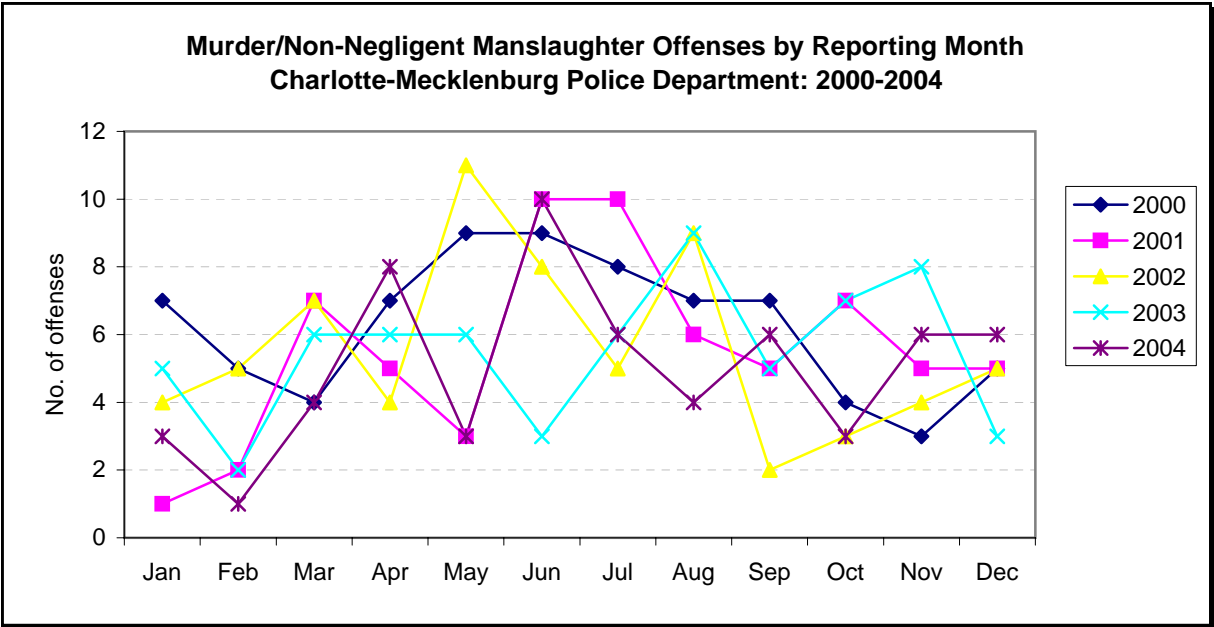
¹The annual population for 2003 does not include Mint Hill, although the crime totals do include crimes occurring in Mint Hill during the first half of the year prior to July 1, 2003. The population base used in the 2003 calculations showed little change from 2002 due to that exclusion.

**Total Index Offenses by Reporting Month
Charlotte-Mecklenburg Police Department: 2000-2004**

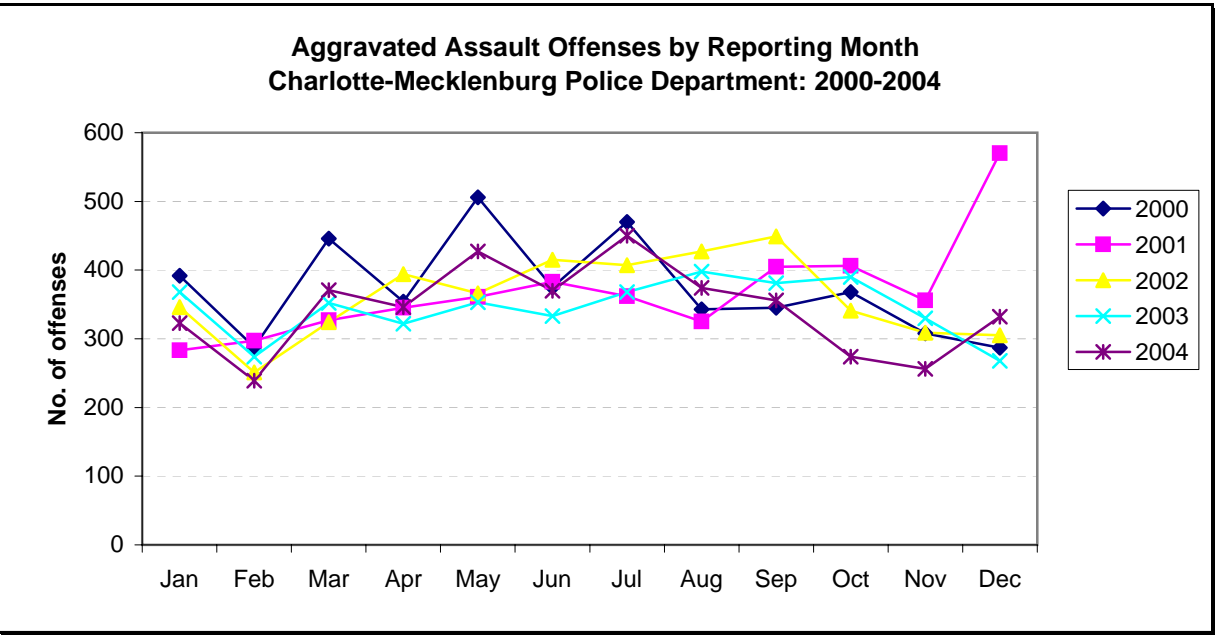
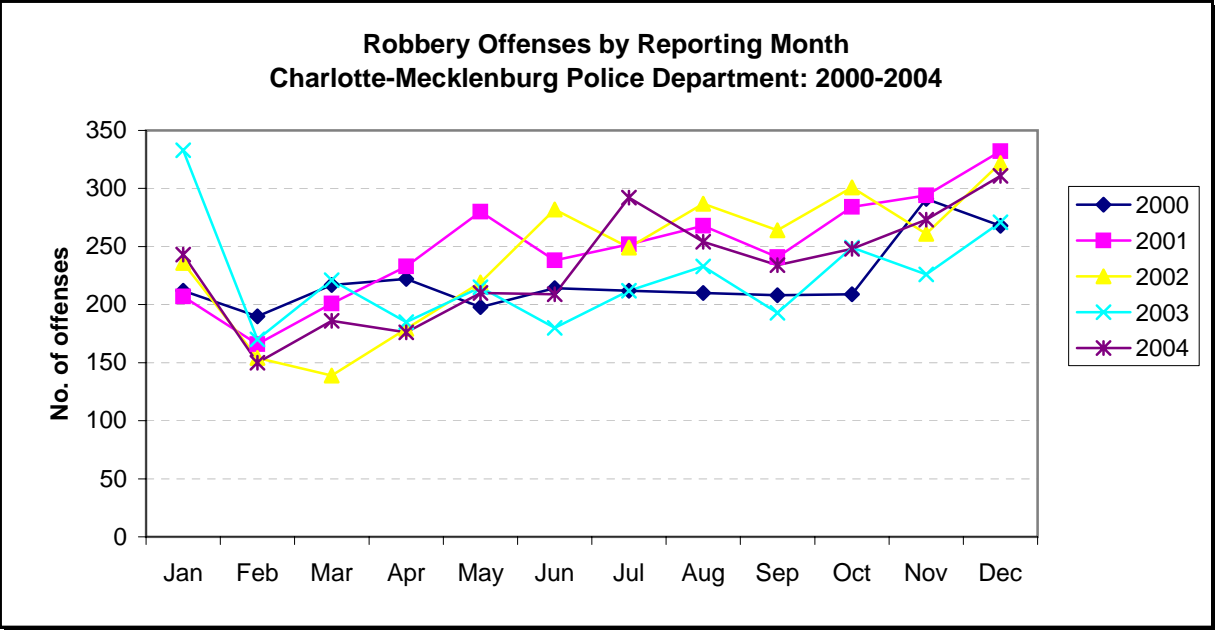


**Year-to-Date Index Offense Totals & % Change by Reporting Month
Charlotte-Mecklenburg Police Department: 2003-2004**

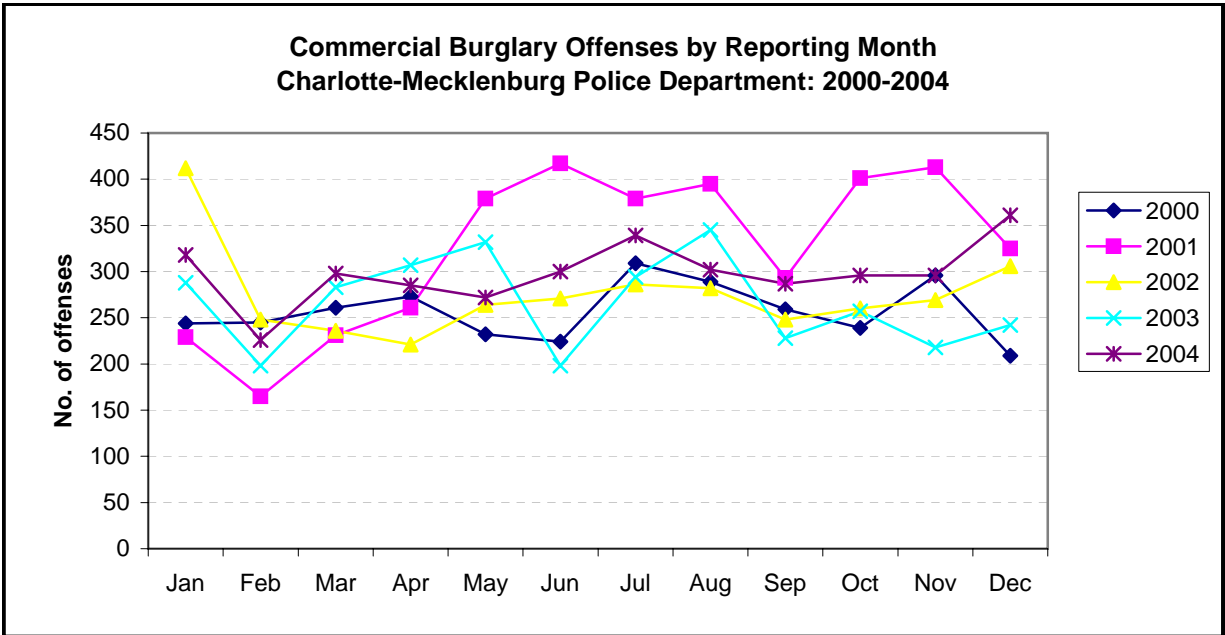
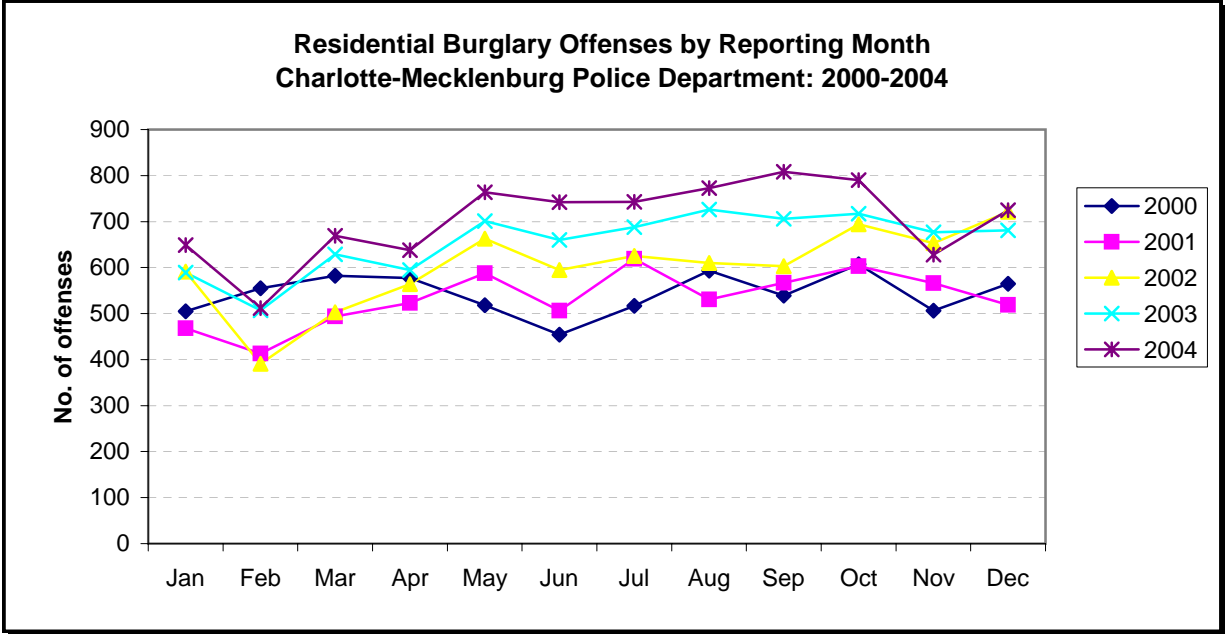




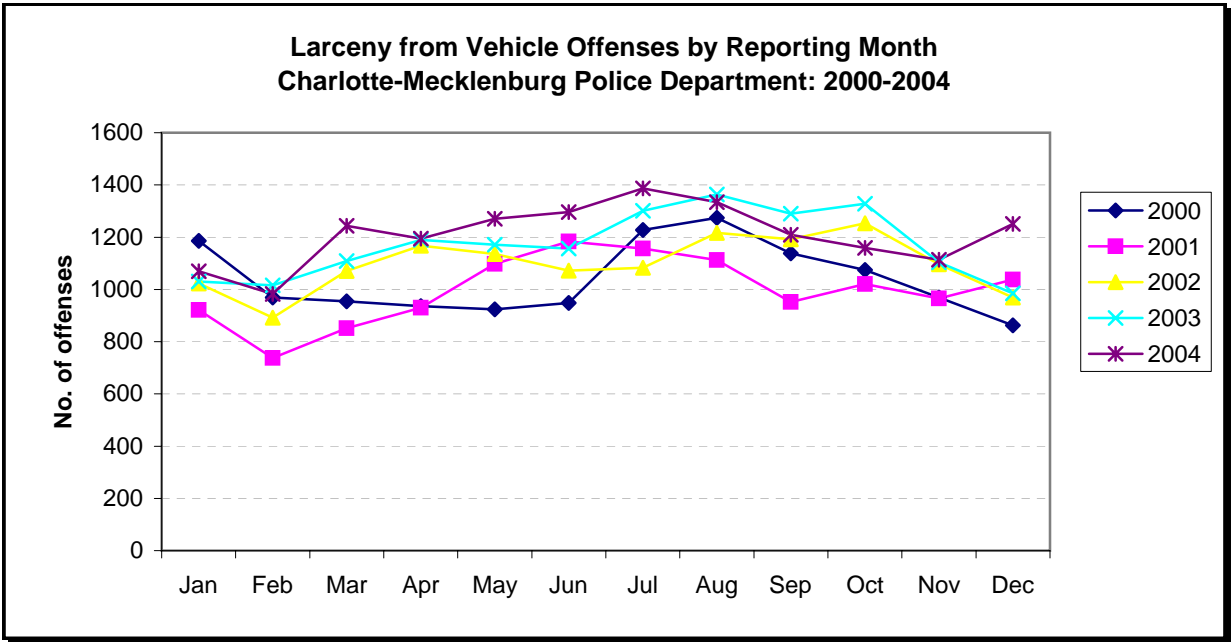
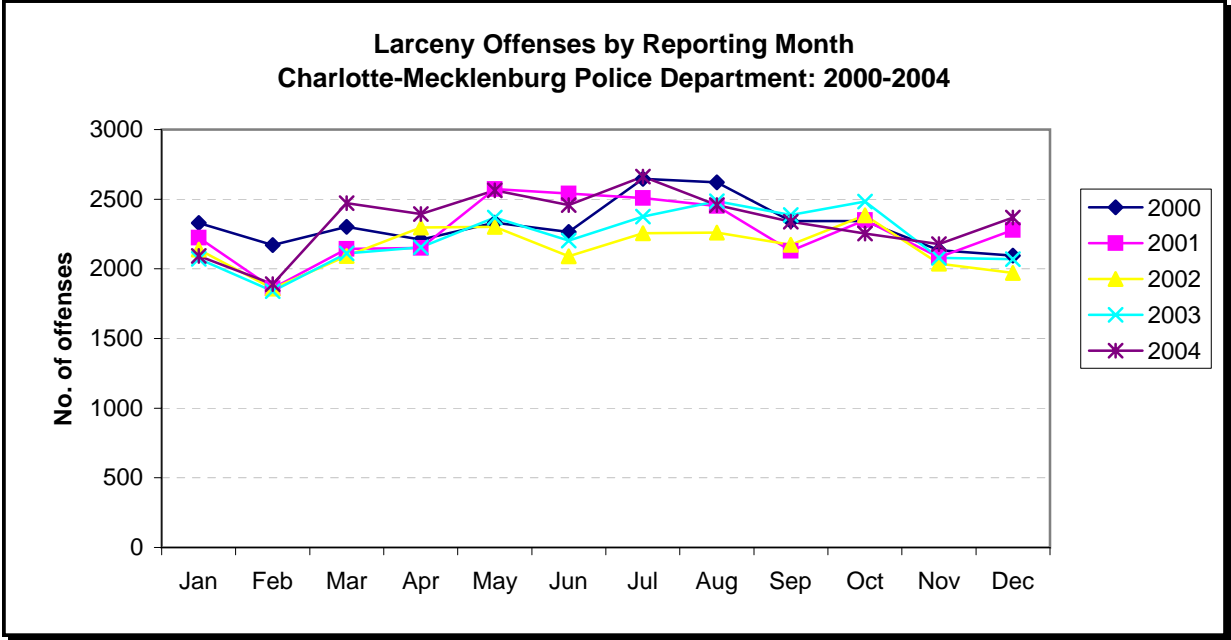
Note: Offenses are counted based on the Uniform Crime Reporting program's Index crime hierarchy and classification guidelines.



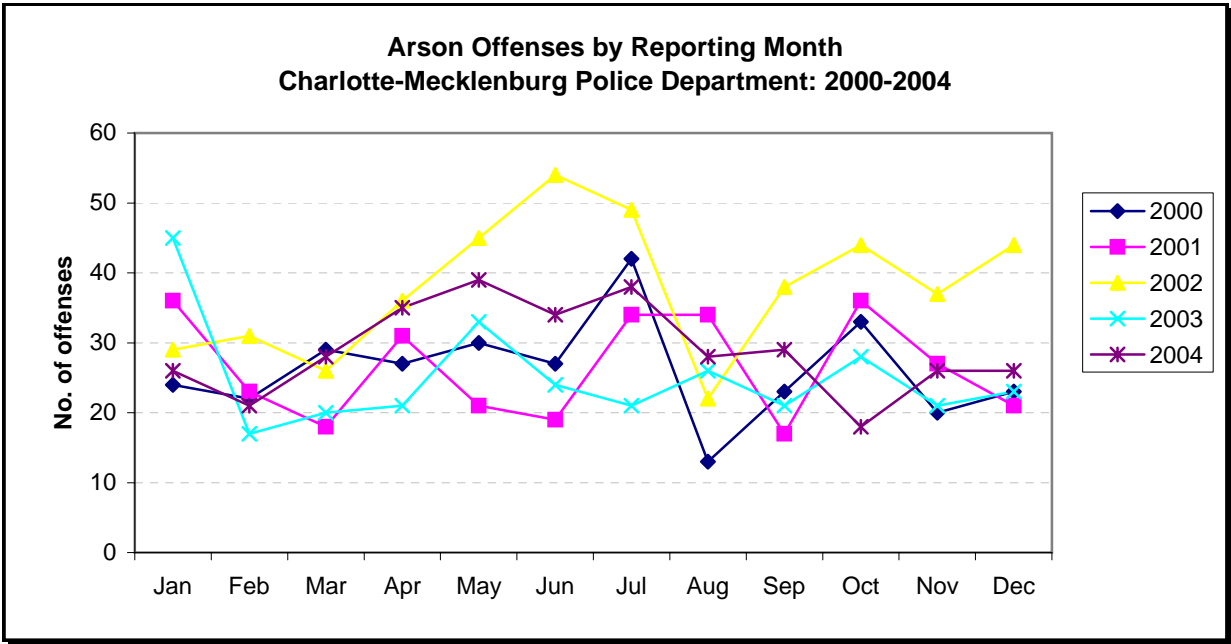
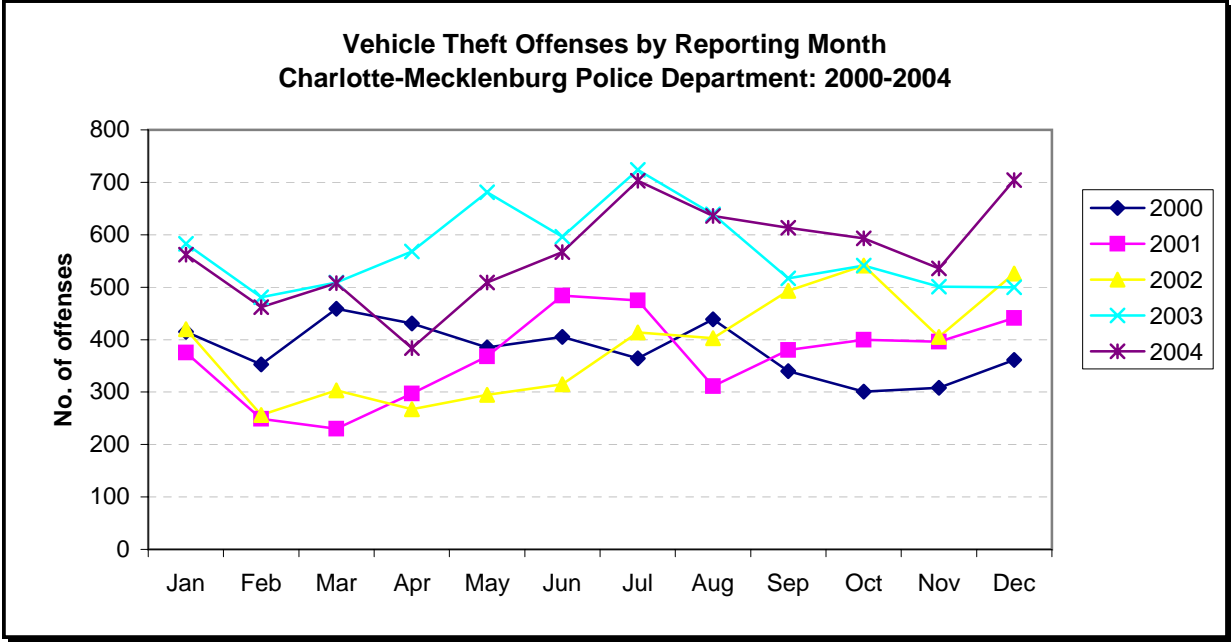
Note: Offenses are counted based on the Uniform Crime Reporting program's Index crime hierarchy and classification guidelines.



Note: Offenses are counted based on the Uniform Crime Reporting program's Index crime hierarchy and classification guidelines.



Note: Offenses are counted based on the Uniform Crime Reporting program's Index crime hierarchy and classification guidelines.



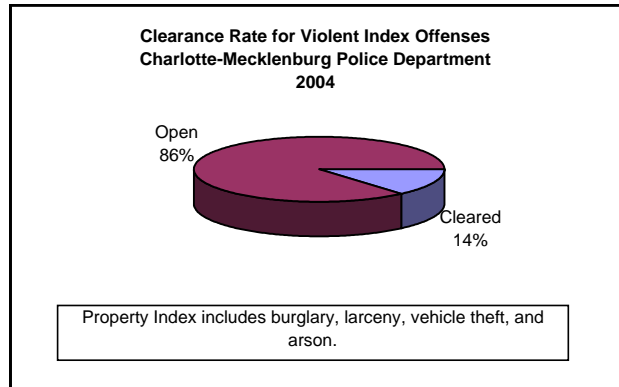
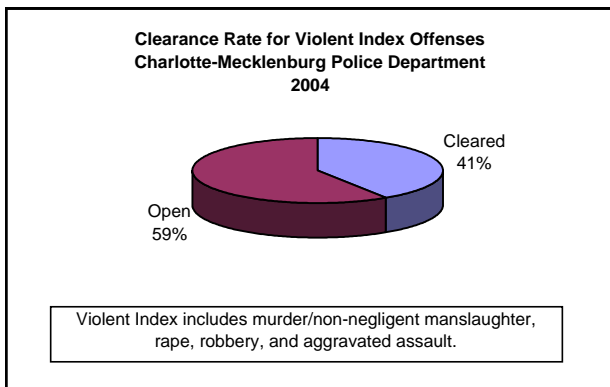
Note: Offenses are counted based on the Uniform Crime Reporting program's Index crime hierarchy and classification guidelines.

**INDEX CLEARANCES¹ REPORTED BY THE CHARLOTTE-MECKLENBURG POLICE DEPARTMENT
2003-2004**

INDEX CLEARANCES	2003:		2004:	
	Number	Clearance Rate ²	Number	Clearance Rate ²
MURDER & NON-NEGLIGENT MANSLAUGHTER	43	65.2%	45	75.0%
RAPE TOTAL	230	76.9%	192	62.5%
ACTUAL	209	78.6%	173	62.5%
ATTEMPT	21	63.6%	19	63.3%
ROBBERY TOTAL	660	24.6%	681	24.4%
ARMED	451	21.3%	495	23.5%
STRONG-ARM	209	36.9%	186	27.4%
AGGRAVATED ASSAULT TOTAL	2984	72.1%	2056	49.9%
BURGLARY TOTAL	1365	12.3%	1298	10.8%
RESIDENTIAL	938	11.9%	1050	12.4%
COMMERCIAL	427	13.4%	248	6.9%
LARCENY TOTAL	3950	14.8%	3805	13.5%
FROM AUTO	435	3.1%	428	2.9%
BICYCLE	23	11.2%	19	7.7%
SHOPLIFTING	1654	59.6%	1832	63.9%
OTHERS	1712	17.8%	1526	14.5%
VEHICLE THEFT TOTAL	1446	21.1%	1206	17.8%
ARSON TOTAL	78	26.0%	94	27.0%
TOTALS	10756	20.7%	9377	17.2%
VIOLENT PROPERTY	3917	54.5%	2974	40.9%
	6839	15.3%	6403	13.5%

¹Clearances and clearance rates are reported in accordance with Uniform Crime Report(UCR) guidelines and include both clearances by arrest and by "exception." An arrest clearance occurs when at least one person is arrested in the case. An "exceptional" clearance occurs when law enforcement has identified at least one offender, but for reasons outside law enforcement control (death of offender, declining of prosecution by victim or district attorney, refusal to extradite, etc.), an arrest is not made.

²The clearance rate is defined by UCR as the percentage that represents the number of cases cleared during the year (regardless of when the offense occurred) divided by the number of cases reported in that year.

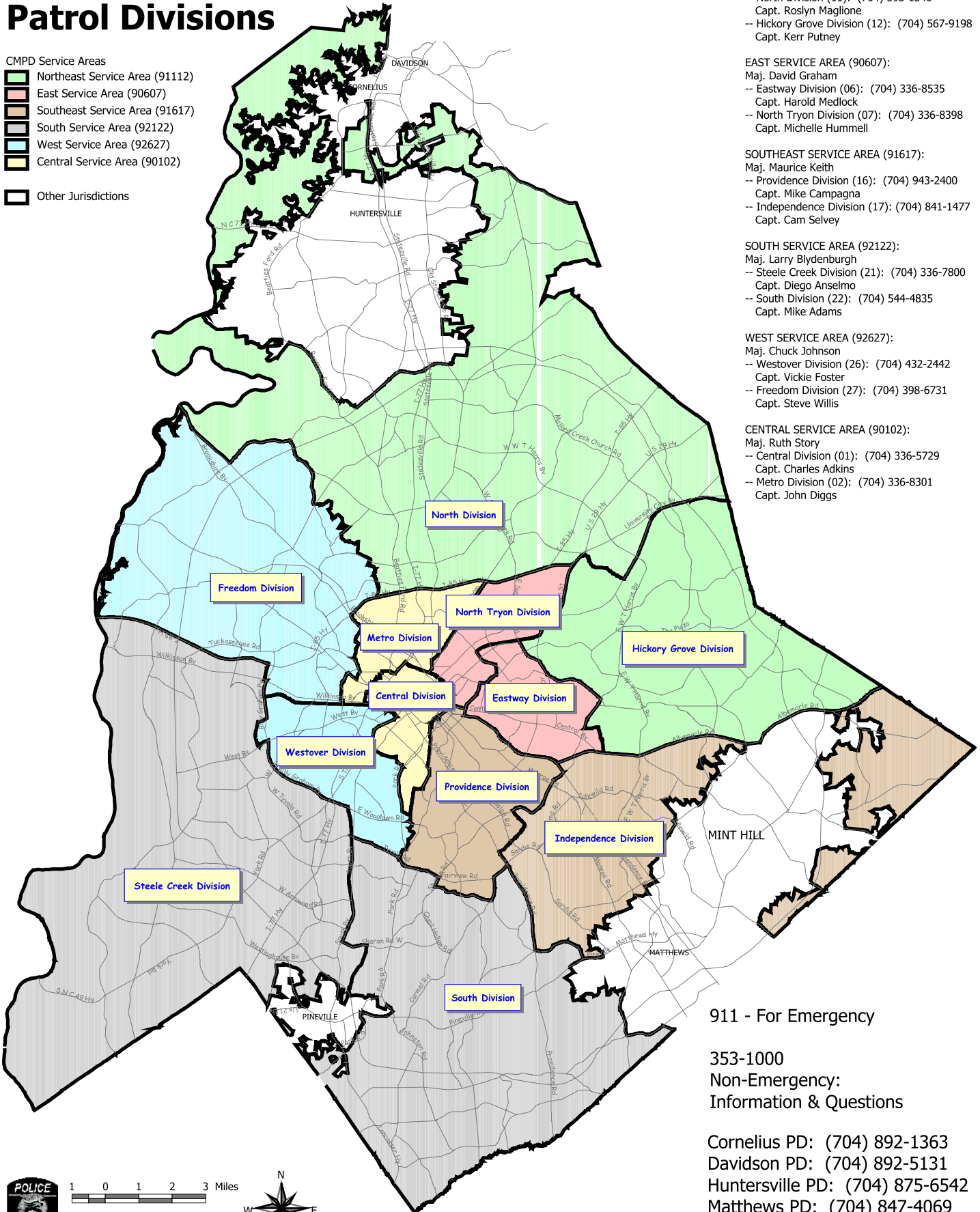


Charlotte-Mecklenburg Police Department Patrol Divisions

CMPD Service Areas

- Northeast Service Area (91112)
- East Service Area (90607)
- Southeast Service Area (91617)
- South Service Area (92122)
- West Service Area (92627)
- Central Service Area (90102)

Other Jurisdictions



NORTHEAST SERVICE AREA (91112):
 Maj. Lisa Shores
 -- North Division (11): (704) 593-1340
 Capt. Roslyn Maglione
 -- Hickory Grove Division (12): (704) 567-9198
 Capt. Kerr Putney

EAST SERVICE AREA (90607):
 Maj. David Graham
 -- Eastway Division (06): (704) 336-8535
 Capt. Harold Medlock
 -- North Tryon Division (07): (704) 336-8398
 Capt. Michelle Hummell

SOUTHEAST SERVICE AREA (91617):
 Maj. Maurice Keith
 -- Providence Division (16): (704) 943-2400
 Capt. Mike Campagna
 -- Independence Division (17): (704) 841-1477
 Capt. Cam Selvey

SOUTH SERVICE AREA (92122):
 Maj. Larry Blydenburgh
 -- Steele Creek Division (21): (704) 336-7800
 Capt. Diego Anselmo
 -- South Division (22): (704) 544-4835
 Capt. Mike Adams

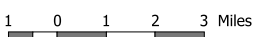
WEST SERVICE AREA (92627):
 Maj. Chuck Johnson
 -- Westover Division (26): (704) 432-2442
 Capt. Vickie Foster
 -- Freedom Division (27): (704) 398-6731
 Capt. Steve Willis

CENTRAL SERVICE AREA (90102):
 Maj. Ruth Story
 -- Central Division (01): (704) 336-5729
 Capt. Charles Adkins
 -- Metro Division (02): (704) 336-8301
 Capt. John Diggs

911 - For Emergency

353-1000
 Non-Emergency:
 Information & Questions

Cornelius PD: (704) 892-1363
 Davidson PD: (704) 892-5131
 Huntersville PD: (704) 875-6542
 Matthews PD: (704) 847-4069
 Pineville PD: (704) 889-2231
 Mint Hill PD: (704) 545-1085



Note: Map produced by Research, Planning, & Analysis Bureau, CMPD (8/13/2004).



Index Offenses Reported by Division and Service Area of Occurrence									
West Service Area: Jan-Dec, 2003-2004									
INDEX CATEGORIES	Westover (A2)			Freedom (A3)			West Service Area		
	2003	2004	% Change	2003	2004	% Change	2003	2004	% Change
MURDER & NON-NEGLIGENT MANSLAUGHTER	7	1	-85.7%	9	5	-44.4%	16	6	-62.5%
RAPE	22	24	9.1%	43	34	-20.9%	65	58	-10.8%
ACTUAL	21	24	14.3%	37	33	-10.8%	58	57	-1.7%
ATTEMPTED	1	0	-100.0%	6	1	-83.3%	7	1	-85.7%
ROBBERY	230	221	-3.9%	272	307	12.9%	502	528	5.2%
ARMED	176	172	-2.3%	217	236	8.8%	393	408	3.8%
STRONG-ARM	54	49	-9.3%	55	71	29.1%	109	120	10.1%
AGGRAVATED ASSAULT	408	353	-13.5%	508	486	-4.3%	916	839	-8.4%
BURGLARY	869	895	3.0%	1397	1643	17.6%	2266	2538	12.0%
RESIDENTIAL	613	600	-2.1%	967	1086	12.3%	1580	1686	6.7%
COMMERCIAL	256	295	15.2%	430	557	29.5%	686	852	24.2%
LARCENY	1443	1784	23.6%	2397	2650	10.6%	3840	4434	15.5%
FROM AUTO	738	925	25.3%	1153	1264	9.6%	1891	2189	15.8%
BICYCLE	8	13	62.5%	16	17	6.3%	24	30	25.0%
SHOPLIFTING	144	131	-9.0%	216	265	22.7%	360	396	10.0%
OTHERS	553	715	29.3%	1012	1104	9.1%	1565	1819	16.2%
VEHICLE THEFT	449	492	9.6%	802	697	-13.1%	1251	1189	-5.0%
ARSON	22	27	22.7%	36	42	16.7%	58	69	19.0%
TOTALS	3450	3797	10.1%	5464	5864	7.3%	8914	9661	8.4%
VIOLENT	667	599	-10.2%	832	832	0.0%	1499	1431	-4.5%
PROPERTY	2783	3198	14.9%	4632	5032	8.6%	7415	8230	11.0%

Index Offenses Reported by Division and Service Area of Occurrence									
Southeast Service Area: Jan-Dec, 2003-2004									
INDEX CATEGORIES	Providence (B1)			Independence (B3)			Southeast Service Area		
	2003	2004	% Change	2003	2004	% Change	2003	2004	% Change
MURDER & NON-NEGLIGENT MANSLAUGHTER	0	4	NA	6	6	0.0%	6	10	66.7%
RAPE	17	13	-23.5%	24	25	4.2%	41	38	-7.3%
ACTUAL	16	12	-25.0%	21	22	4.8%	37	34	-8.1%
ATTEMPTED	1	1	0.0%	3	3	0.0%	4	4	0.0%
ROBBERY	128	136	6.3%	212	245	15.6%	340	381	12.1%
ARMED	105	97	-7.6%	175	183	4.6%	280	280	0.0%
STRONG-ARM	23	39	69.6%	38	62	63.2%	61	101	65.6%
AGGRAVATED ASSAULT	191	169	-11.5%	314	328	4.5%	505	497	-1.6%
BURGLARY	834	826	-1.0%	992	1086	9.5%	1826	1912	4.7%
RESIDENTIAL	524	516	-1.5%	755	850	12.6%	1279	1366	6.8%
COMMERCIAL	310	310	0.0%	237	236	-0.4%	547	546	-0.2%
LARCENY	1796	1982	10.4%	2768	2328	-15.9%	4564	4310	-5.6%
FROM AUTO	847	914	7.9%	1639	1311	-20.0%	2486	2225	-10.5%
BICYCLE	15	18	20.0%	40	23	-42.5%	55	41	-25.5%
SHOPLIFTING	190	207	8.9%	234	199	-15.0%	424	406	-4.2%
OTHERS	744	843	13.3%	855	795	-7.0%	1599	1638	2.4%
VEHICLE THEFT	340	394	15.9%	728	683	-6.2%	1068	1077	0.8%
ARSON	11	17	54.5%	33	33	0.0%	44	50	13.6%
TOTALS	3317	3541	6.8%	5077	4734	-6.8%	8394	8275	-1.4%
VIOLENT	336	322	-4.2%	556	604	8.6%	892	926	3.8%
PROPERTY	2981	3219	8.0%	4521	4130	-8.6%	7502	7349	-2.0%

The data in the district breakdowns does not include a small number of offenses in which the location of the offense was unknown or was entered without a valid tract assignment. Districts are not equal in geographic size, demographics, zoning/development, and other factors that influence the rate of crimes committed in an area. Therefore, the comparison of raw offense totals across districts is not advisable.

Index Offenses Reported by Division and Service Area of Occurrence									
Northeast Service Area: Jan-Dec, 2003-2004									
INDEX CATEGORIES	North (C1)			Hickory Grove (C3)			Northeast Service Area		
	2003	2004	% Change	2003	2004	% Change	2003	2004	% Change
MURDER & NON-NEGLIGENT MANSLAUGHTER	5	6	20.0%	8	4	-50.0%	13	10	-23.1%
RAPE ACTUAL	30	39	30.0%	33	35	6.1%	63	74	17.5%
RAPE ATTEMPTED	28	37	32.1%	26	29	11.5%	54	66	22.2%
ROBBERY ARMED	2	2	0.0%	7	6	-14.3%	9	8	-11.1%
ROBBERY STRONG-ARM	197	259	31.5%	264	236	-10.6%	461	495	7.4%
AGGRAVATED ASSAULT	159	202	27.0%	209	196	-6.2%	368	398	8.2%
BURGLARY RESIDENTIAL	38	57	50.0%	55	40	-27.3%	93	97	4.3%
BURGLARY COMMERCIAL	334	349	4.5%	418	433	3.6%	752	782	4.0%
LARCENY FROM AUTO	1295	1614	24.6%	1147	1215	5.9%	2442	2829	15.8%
LARCENY BICYCLE	933	1130	21.1%	870	950	9.2%	1803	2080	15.4%
LARCENY SHOPLIFTING	362	484	33.7%	277	261	-5.8%	639	745	16.6%
LARCENY OTHERS	3960	4206	6.2%	2306	2116	-8.2%	6266	6322	0.9%
VEHICLE THEFT	2279	2376	4.3%	1227	1065	-13.2%	3506	3441	-1.9%
ARSON	11	22	100.0%	29	44	51.7%	40	66	65.0%
TOTALS	347	355	2.3%	229	147	-35.8%	576	502	-12.8%
VIOLENT PROPERTY	1323	1453	9.8%	821	860	4.8%	2144	2313	7.9%
VIOLENT PROPERTY	778	872	12.1%	821	721	-12.2%	1599	1593	-0.4%
VIOLENT PROPERTY	36	44	22.2%	36	44	22.2%	72	88	22.2%
TOTALS	6635	7389	11.4%	5033	4804	-4.5%	11668	12193	4.5%
VIOLENT PROPERTY	566	653	15.4%	723	708	-2.1%	1289	1361	5.6%
VIOLENT PROPERTY	6069	6736	11.0%	4310	4096	-5.0%	10379	10832	4.4%

Index Offenses Reported by Division and Service Area of Occurrence									
Central Service Area: Jan-Dec, 2003-2004									
INDEX CATEGORIES	Central (D1)			Metro (D2)			Central Service Area		
	2003	2004	% Change	2003	2004	% Change	2003	2004	% Change
MURDER & NON-NEGLIGENT MANSLAUGHTER	2	1	-50.0%	6	8	33.3%	8	9	12.5%
RAPE ACTUAL	16	18	12.5%	20	23	15.0%	36	41	13.9%
RAPE ATTEMPTED	15	17	13.3%	17	22	29.4%	32	39	21.9%
ROBBERY ARMED	1	1	0.0%	3	1	-66.7%	4	2	-50.0%
ROBBERY STRONG-ARM	122	132	8.2%	175	213	21.7%	297	345	16.2%
AGGRAVATED ASSAULT	74	78	5.4%	137	164	19.7%	211	242	14.7%
BURGLARY RESIDENTIAL	48	54	12.5%	38	49	28.9%	86	103	19.8%
BURGLARY COMMERCIAL	174	157	-9.8%	400	416	4.0%	574	573	-0.2%
LARCENY FROM AUTO	389	396	1.8%	533	674	26.5%	922	1070	16.1%
LARCENY BICYCLE	213	174	-18.3%	400	494	23.5%	613	668	9.0%
LARCENY SHOPLIFTING	176	222	26.1%	133	180	35.3%	309	402	30.1%
LARCENY OTHERS	2003	2036	1.6%	1059	960	-9.3%	3062	2996	-2.2%
VEHICLE THEFT	1166	1121	-3.9%	597	432	-27.6%	1763	1553	-11.9%
ARSON	10	22	120.0%	14	10	-28.6%	24	32	33.3%
TOTALS	72	76	5.6%	47	62	31.9%	119	138	16.0%
VIOLENT PROPERTY	755	818	8.3%	401	457	14.0%	1156	1275	10.3%
VIOLENT PROPERTY	457	340	-25.6%	400	322	-19.5%	857	662	-22.8%
VIOLENT PROPERTY	14	7	-50.0%	19	15	-21.1%	33	22	-33.3%
TOTALS	3177	3087	-2.8%	2612	2631	0.7%	5789	5718	-1.2%
VIOLENT PROPERTY	314	308	-1.9%	601	660	9.8%	915	968	5.8%
VIOLENT PROPERTY	2863	2779	-2.9%	2011	1971	-2.0%	4874	4750	-2.5%

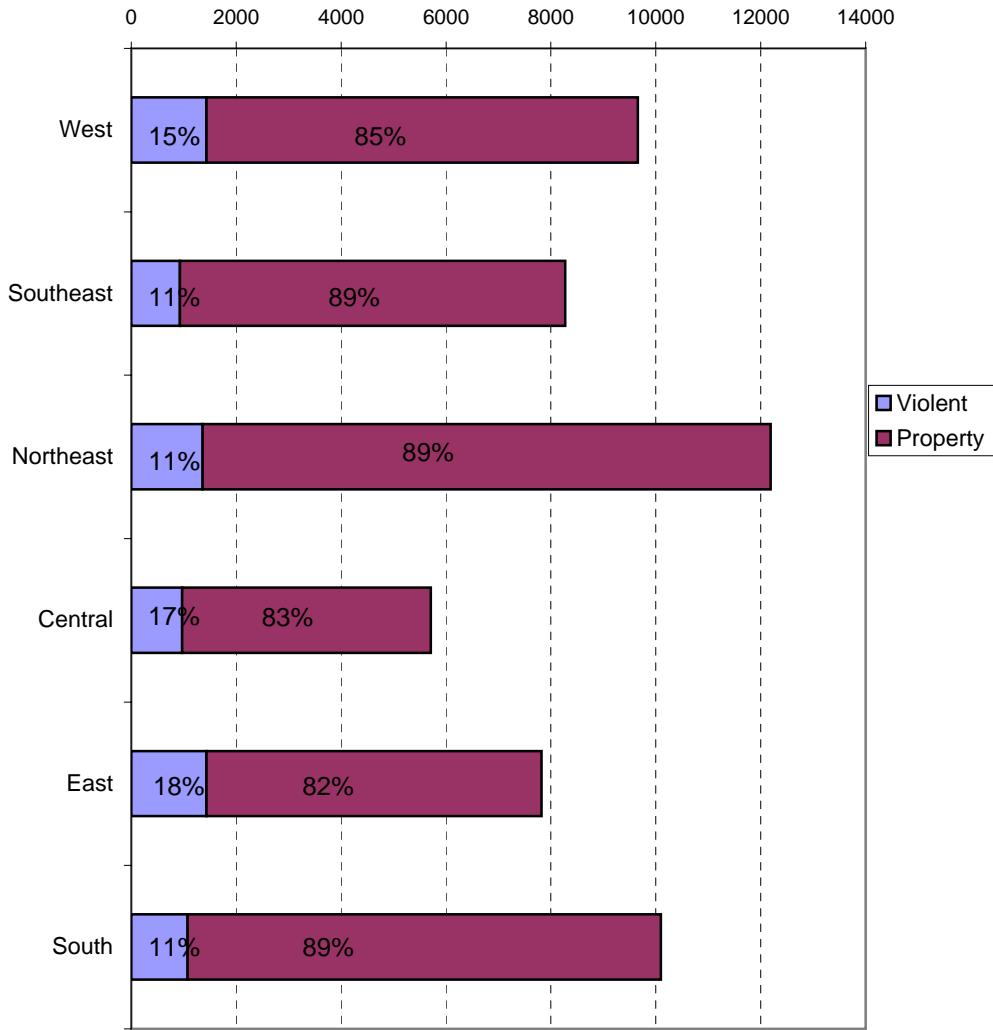
The data in the district breakdowns does not include a small number of offenses in which the location of the offense was unknown or was entered without a valid tract assignment. Districts are not equal in geographic size, demographics, zoning/development, and other factors that influence the rate of crimes committed in an area. Therefore, the comparison of raw offense totals across districts is not advisable.

Index Offenses Reported by Division and Service Area of Occurrence									
East Service Area: Jan-Dec, 2003-2004									
INDEX CATEGORIES	Eastway (C2)			North Tryon (D3)			East Service Area		
	2003	2004	% Change	2003	2004	% Change	2003	2004	% Change
MURDER & NON-NEGLIGENT MANSLAUGHTER	4	6	50.0%	8	11	37.5%	12	17	41.7%
RAPE ACTUAL	20	21	5.0%	20	21	5.0%	40	42	5.0%
RAPE ATTEMPTED	0	4	NA	0	4	NA	0	8	NA
ROBBERY ARMED	330	308	-6.7%	325	304	-6.5%	655	612	-6.6%
ROBBERY STRONG-ARM	256	230	-10.2%	268	226	-15.7%	524	456	-13.0%
AGGRAVATED ASSAULT	74	78	5.4%	57	78	36.8%	131	156	19.1%
BURGLARY RESIDENTIAL	294	295	0.3%	470	467	-0.6%	764	762	-0.3%
BURGLARY COMMERCIAL	926	990	6.9%	772	752	-2.6%	1698	1742	2.6%
LARCENY FROM AUTO	686	742	8.2%	512	500	-2.3%	1198	1242	3.7%
LARCENY BICYCLE	240	248	3.3%	260	252	-3.1%	500	500	0.0%
LARCENY SHOPLIFTING	2206	2287	3.7%	1186	1315	10.9%	3392	3602	6.2%
LARCENY OTHERS	955	823	-13.8%	619	633	2.3%	1574	1456	-7.5%
VEHICLE THEFT	15	28	86.7%	11	9	-18.2%	26	37	42.3%
ARSON	564	754	33.7%	84	98	16.7%	648	852	31.5%
TOTALS	672	682	1.5%	472	575	21.8%	1144	1257	9.9%
VIOLENT PROPERTY	520	541	4.0%	509	465	-8.6%	1029	1006	-2.2%
	17	28	64.7%	9	14	55.6%	26	42	61.5%
	4317	4476	3.7%	3299	3349	1.5%	7616	7825	2.7%
	648	630	-2.8%	823	803	-2.4%	1471	1433	-2.6%
	3669	3846	4.8%	2476	2546	2.8%	6145	6392	4.0%

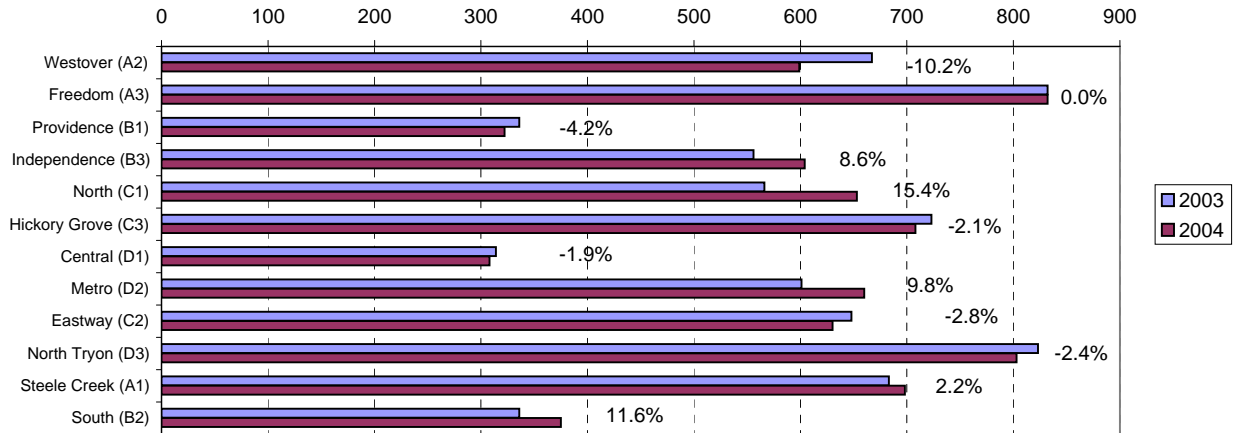
Index Offenses Reported by Division and Service Area of Occurrence									
South Service Area: Jan-Dec, 2003-2004									
INDEX CATEGORIES	Steele Creek (A1)			South (B2)			South Service Area		
	2003	2004	% Change	2003	2004	% Change	2003	2004	% Change
MURDER & NON-NEGLIGENT MANSLAUGHTER	8	7	-12.5%	3	1	-66.7%	11	8	-27.3%
RAPE ACTUAL	29	26	-10.3%	21	16	-23.8%	50	42	-16.0%
RAPE ATTEMPTED	25	22	-12.0%	17	13	-23.5%	42	35	-16.7%
ROBBERY ARMED	4	4	0.0%	4	3	-25.0%	8	7	-12.5%
ROBBERY STRONG-ARM	269	259	-3.7%	133	140	5.3%	402	399	-0.7%
AGGRAVATED ASSAULT	211	202	-4.3%	101	101	0.0%	312	303	-2.9%
BURGLARY RESIDENTIAL	48	57	18.8%	32	39	21.9%	80	96	20.0%
BURGLARY COMMERCIAL	377	406	7.7%	179	218	21.8%	556	624	12.2%
LARCENY FROM AUTO	881	992	12.6%	914	863	-5.6%	1795	1855	3.3%
LARCENY BICYCLE	613	626	2.1%	720	673	-6.5%	1333	1299	-2.6%
LARCENY SHOPLIFTING	268	366	36.6%	194	190	-2.1%	462	556	20.3%
LARCENY OTHERS	2799	3319	18.6%	2382	2642	10.9%	5181	5961	15.1%
VEHICLE THEFT	1336	1880	40.7%	1317	1500	13.9%	2653	3380	27.4%
ARSON	19	25	31.6%	17	16	-5.9%	36	41	13.9%
TOTALS	455	403	-11.4%	170	151	-11.2%	625	554	-11.4%
VIOLENT PROPERTY	989	1011	2.2%	878	975	11.0%	1867	1986	6.4%
	569	647	13.7%	370	492	33.0%	939	1139	21.3%
	34	41	20.6%	24	32	33.3%	58	73	25.9%
	4966	5697	14.7%	4026	4404	9.4%	8992	10101	12.3%
	683	698	2.2%	336	375	11.6%	1019	1073	5.3%
	4283	4999	16.7%	3690	4029	9.2%	7973	9028	13.2%

The data in the district breakdowns does not include a small number of offenses in which the location of the offense was unknown or was entered without a valid tract assignment. Districts are not equal in geographic size, demographics, zoning/development, and other factors that influence the rate of crimes committed in an area. Therefore, the comparison of raw offense totals across districts is not advisable.

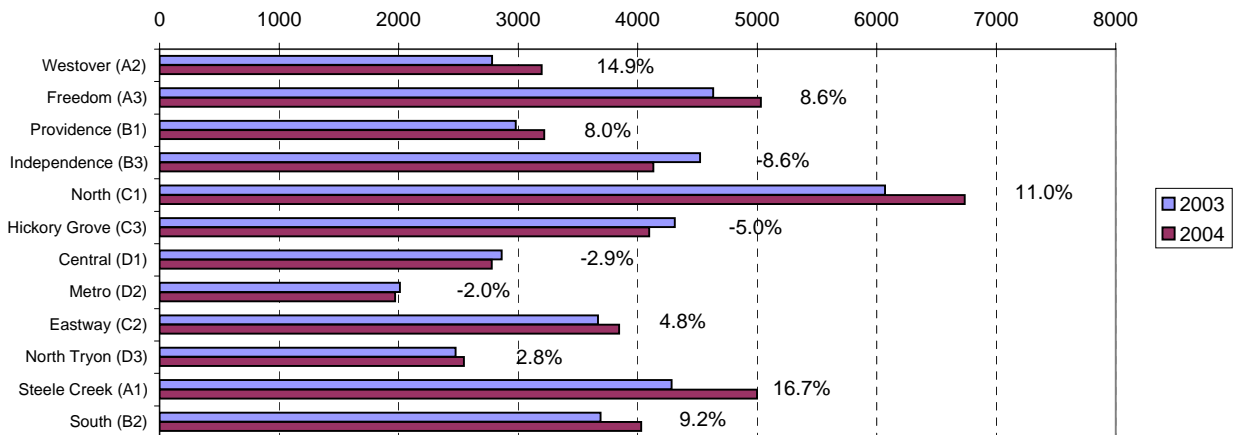
**Reported Index Offenses in 2004
by Violent vs. Property and Service Area
Charlotte-Mecklenburg Police Department**



**Violent Index Offenses Reported by Division
Charlotte-Mecklenburg Police Department: 2003-2004**



**Property Index Offenses Reported by Division
Charlotte-Mecklenburg Police Department: 2003-2004**



Note: Divisions are not directly comparable with each other based solely on raw offense totals because they are not equal in geographic size, demographics, zoning/development, and other factors that can influence the rate of crimes committed in an area.

PART 2 AND OTHER OFFENSES REPORTED¹
CHARLOTTE-MECKLENBURG POLICE DEPARTMENT: 2003-2004

Crime Categories	Number of Offenses:			Rate per Estimated 100,000 Population:		
	<u>2003</u>	<u>2004</u>	<u>% Change</u>	<u>2003</u>	<u>2004</u>	<u>% Change</u>
				Est. Pop. 674509	Est. Pop. 695487	
NON-AGGRAVATED ASSAULT	11204	12018	7.3% *	1661.1	1728.0	4.0%
FORGERY/COUNTERFIET	567	568	0.2% *	84.1	81.7	-2.8%
FRAUD	2347	2068	-11.9% *	348.0	297.3	-14.5%
EMBEZZLEMENT	418	396	-5.3% *	62.0	56.9	-8.1%
VANDALISM/DAMAGE TO PROPERTY	7517	7849	4.4% *	1114.4	1128.6	1.3%
SEX OFFENSES	470	535	13.8% *	69.7	76.9	10.4%
OFFENSES AGAINST THE FAMILY	127	155	22.0% *	18.8	22.3	18.4%
OTHER PART 2 OFFENSES ²	6183	8021	29.7%	916.7	1153.3	25.8%
TOTAL PART 2 OFFENSES ²	28833	31610	9.6% *	4274.7	4545.0	6.3%

¹Part 2 Offenses are crimes other than those classified as Index Crimes by the Uniform Crime Reporting (UCR) program. The UCR program does not collect offense data on these categories.

²Much of the increase in the "Other Part 2" category is due to a change in reporting procedures: some drug and other cases are now documented by an offense report where previously they were documented only by the arrest record.

NON-CRIMINAL INCIDENT REPORTS
CHARLOTTE-MECKLENBURG POLICE DEPARTMENT: 2003-2004

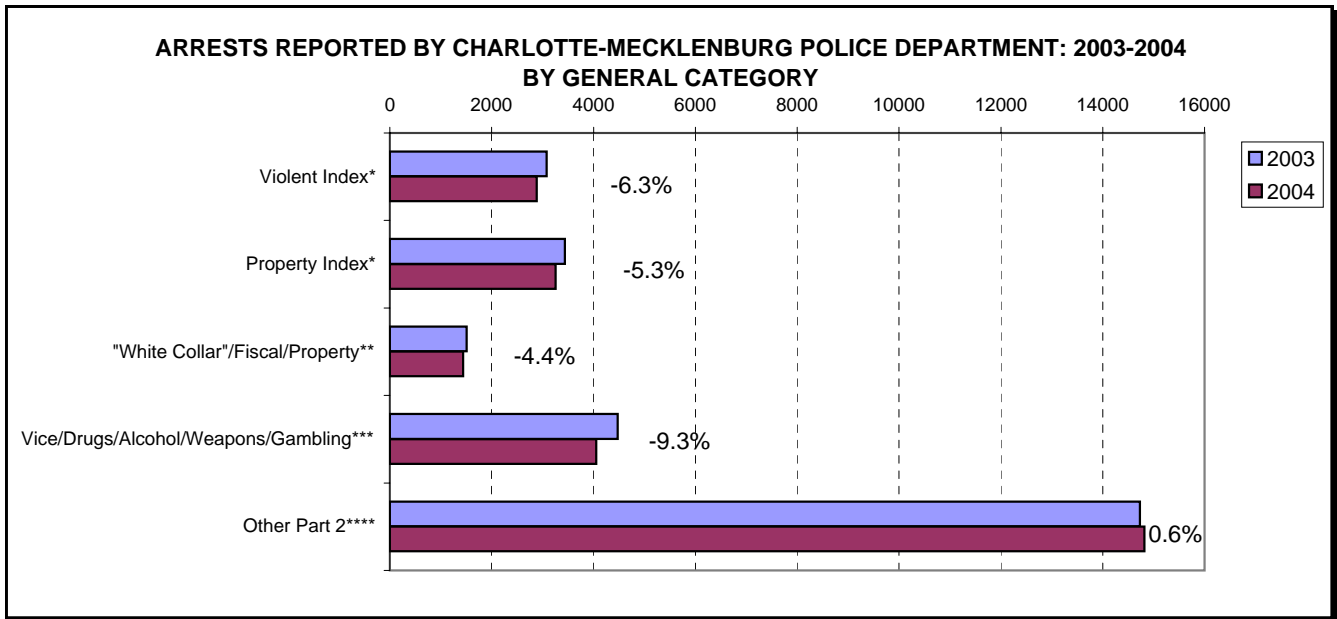
Incident Categories	Number of Offenses:			Rate per Estimated 100,000 Population:		
	<u>2003</u>	<u>2004</u>	<u>% Change</u>	<u>2003</u>	<u>2004</u>	<u>% Change</u>
				Est. Pop. 674509	Est. Pop. 695487	
MISSING PERSONS	3435	3911	13.9% *	509.3	562.3	10.4%
SUICIDE/ATTEMPTED SUICIDE	446	516	15.7% *	66.1	74.2	12.2%
SUDDEN OR ACCIDENTAL DEATH	485	506	4.3% *	71.9	72.8	1.2%
LOST OR MISSING PROPERTY	130	124	-4.6% *	19.3	17.8	-7.5%
OTHER INCIDENTS ³	893	903	1.1% *	132.4	129.8	-1.9%
TOTAL	5389	5960	10.6% *	799.0	857.0	7.3%

³Reports in this category include non-criminal incidents such as public accidents, non-criminal damage to property, or other events that did not violate a law but required additional documentation or investigation.

**Arrests Reported by Charlotte-Mecklenburg Police Department
2003-2004**

Crime Category¹	Adults: Age 18 & Older			Juveniles: Age under 18			Total: All Ages		
	2003	2004	% Change	2003	2004	% Change	2003	2004	% Change
Murder/Non-Negligent Manslaughter	45	37	-17.8%	7	3	-57.1%	52	40	-23.1%
Rape	33	32	-3.0%	6	2	-66.7%	39	34	-12.8%
Robbery	299	297	-0.7%	120	141	17.5%	419	438	4.5%
Aggravated Assault	2198	2055	-6.5%	370	318	-14.1%	2568	2373	-7.6%
TOTAL VIOLENT INDEX	2575	2421	-6.0%	503	464	-7.8%	3078	2885	-6.3%
Burglary	492	582	18.3%	226	215	-4.9%	718	797	11.0%
Larceny	1510	1586	5.0%	648	596	-8.0%	2158	2182	1.1%
Vehicle Theft	147	75	-49.0%	365	152	-58.4%	512	227	-55.7%
Arson	21	16	-23.8%	30	36	20.0%	51	52	2.0%
TOTAL PROPERTY INDEX	2170	2259	4.1%	1269	999	-21.3%	3439	3258	-5.3%
TOTAL INDEX	4745	4680	-1.4%	1772	1463	-17.4%	6517	6143	-5.7%
Negligent & Vehicular Manslaughter	1	4	300.0%	0	0	NA	1	4	300.0%
Non-Aggravated Assault	1718	1822	6.1%	914	801	-12.4%	2632	2623	-0.3%
Forgery/Counterfeit	132	143	8.3%	4	2	-50.0%	136	145	6.6%
Fraud	575	551	-4.2%	8	9	12.5%	583	560	-3.9%
Embezzlement	110	93	-15.5%	4	13	225.0%	114	106	-7.0%
Stolen Property	524	527	0.6%	151	104	-31.1%	675	631	-6.5%
Vandalism	239	226	-5.4%	204	200	-2.0%	443	426	-3.8%
Weapons	482	437	-9.3%	72	60	-16.7%	554	497	-10.3%
Prostitution	339	363	7.1%	3	8	166.7%	342	371	8.5%
Sex Offenses	224	193	-13.8%	41	18	-56.1%	265	211	-20.4%
Drugs	3054	2685	-12.1%	297	262	-11.8%	3351	2947	-12.1%
Gambling	26	20	-23.1%	0	0	NA	26	20	-23.1%
Offenses against the Family	11	5	-54.5%	0	1	NA	11	6	-45.5%
Driving While Alcohol/Drug Impaired	2115	1959	-7.4%	10	11	10.0%	2125	1970	-7.3%
Liquor Violation	185	211	14.1%	14	10	-28.6%	199	221	11.1%
Disorderly Conduct	585	573	-2.1%	301	302	0.3%	886	875	-1.2%
Other Arrests (Non-Traffic)	7572	7943	4.9%	798	762	-4.5%	8370	8705	4.0%
TOTAL PART 2	17892	17755	-0.8%	2821	2563	-9.1%	20713	20318	-1.9%
TOTAL ARRESTS	22637	22435	-0.9%	4593	4026	-12.3%	27230	26461	-2.8%

¹An arrest can have multiple charges for different state, local, or federal statutes and ordinances. For UCR counting purposes, each arrest is classified by the highest type of charge on the UCR hierarchy. The totals in this chart reflect the number of arrest events, not the number of charges on each arrest.

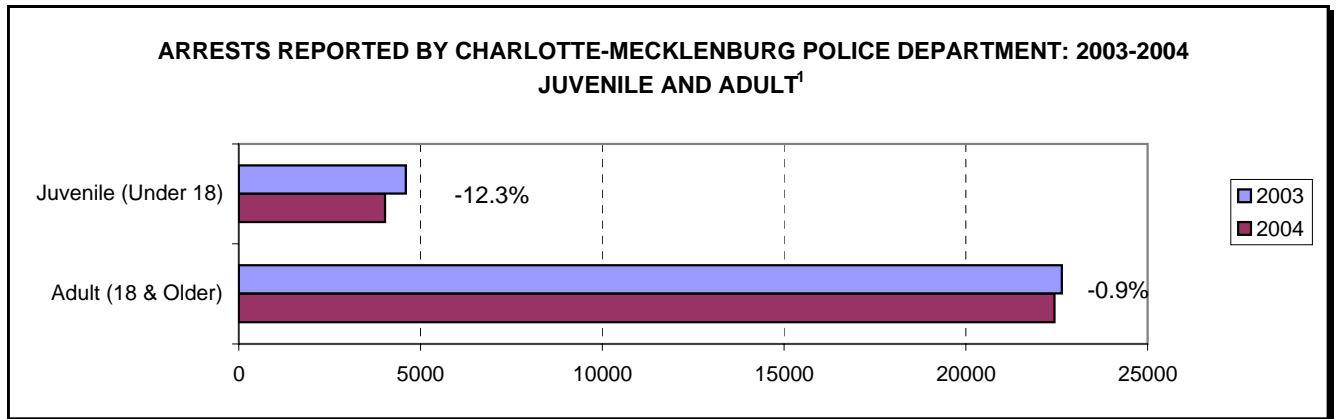


*Violent Index includes murder/non-negligent manslaughter, rape, robbery, and aggravated assault; property Index includes burglary, larceny, vehicle theft, and arson.

**"White Collar"/Fiscal/Property includes forgery, counterfiet, fraud, embezzlement, possession of stolen property.

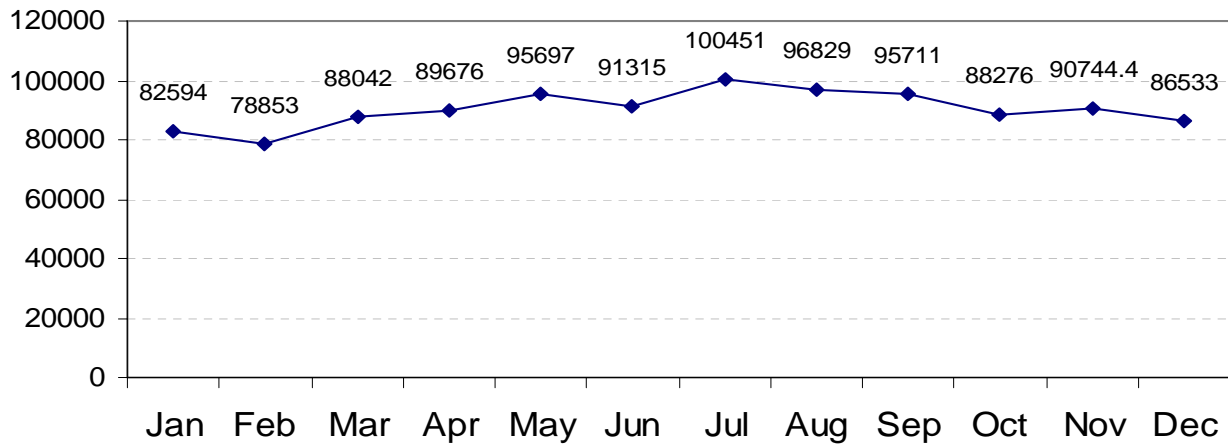
***Vice/Drugs/Alcohol/Weapons/Gambling includes prostitution, gambling , liquor violations (except DUI), drug violations, and concealed weapons

****Other Part 2 includes, non-aggravated (simple) assault, criminal damage to property, sex offenses (excluding forcible rape), disorderly conduct, DUI, and all other non-traffic arrests.



¹ Under Uniform Crime Reporting procedures, juvenile arrests include all arrests/custodies involving persons under 18 years of age.

**Communications Division: 911 & Emergency Calls
Received in 2004
Charlotte-Mecklenburg Police Department**



Total calls received in 2004: 1,084,721

**CITIZEN-INITIATED CALLS FOR SERVICE¹ BY TYPE
CHARLOTTE-MECKLENBURG POLICE DEPARTMENT: 2004**

<u>Type of Call²</u>	<u>2003</u>	<u>2004</u>	<u>% Change</u>
ABC RELATED	2524	2121	-16.0%
ACCIDENT	34798	36102	3.7%
ALARM	41501	32988	-20.5%
ANIMAL CONTROL ³	724	250	-65.5%
ASSAULT	4942	1469	-70.3%
ASSAULT WITH DEADLY WEAPON	1390	4543	226.8%
ASSIST OTHER AGENCY	7070	7158	1.2%
BOMB THREAT	205	135	-34.1%
BREAK/ENTER	15639	18123	15.9%
COMMUNICATING THREATS	3680	3565	-3.1%
COUNTY SECURITY ³	24	7	-70.8%
CRIMINAL INTELLIGENCE	10	2	-80.0%
DAMAGE TO PROPERTY	7644	7332	-4.1%
DEATH	412	324	-21.4%
DISTURBANCE	24125	25263	4.7%
DOMESTIC DISTURBANCE/INCIDENT	35258	34973	-0.8%
DRUG RELATED	4804	4298	-10.5%
EXTORTION/BLACKMAIL	5	6	20.0%
FIGHT	3048	3220	5.6%
FIRE CASE	162	124	-23.5%
FRAUD/FORGERY	3564	3336	-6.4%
GAMBLING	32	29	-9.4%
HARASSMENT	1751	1767	0.9%
HIT AND RUN	6982	7217	3.4%
JUVENILE RELATED	1507	1966	30.5%
KIDNAPPING	168	194	15.5%
LAKE ENFORCEMENT	79	88	11.4%
LARCENY	29180	30702	5.2%
LOITERING	3532	4169	18.0%
MAJOR INCIDENT	42	21	-50.0%
MISSING PERSON	5616	7335	30.6%
NOISE COMPLAINT	13154	13753	4.6%
OFFENSE AGAINST FAMILY	17	7	-58.8%
OFFICER CALLED IN	463	758	63.7%
OVERDOSE	270	340	25.9%
PORNOGRAPHY	15	8	-46.7%
PROPERTY	2471	3872	56.7%
PROSTITUTION	764	968	26.7%
PUBLIC SERVICE	14882	19033	27.9%
QUALITY OF LIFE	1259	1301	3.3%
ROBBERY	2634	2948	11.9%
SEX CRIME	1089	1162	6.7%
SUICIDE	1179	1189	0.8%
SUSPICIOUS PERSON	17924	18736	4.5%
TRAFFIC RELATED	10324	10344	0.2%
TRESPASS	3649	4229	15.9%
VEHICLE RELATED	30108	33141	10.1%
VIOLENT CRIMES TASK FORCE	1	13	1200.0%
WARRANT RELATED	4028	3655	-9.3%
WEAPON RELATED	6759	6887	1.9%
ZONE CHECK	44	18	-59.1%
911 HANG UP / CALLBACK	14239	17506	22.9%
TOTAL	365691	378695	3.6%

¹These totals exclude duplicate and cancelled calls for service; they include calls handled by Non-Emergency Police Services (NEPS) as well as by field officers, detectives and other CMPD staff.

²The type of call is entered by Communications based on the 911 call unless updated by an officer assigned to respond.

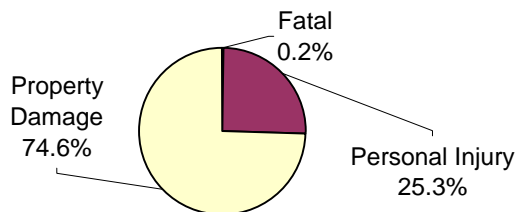
³In this summary, calls to Animal Control or Mecklenburg County Security include only those calls that involved the dispatching of other C-MPD officers, detectives, or staff. See the "Animal Control Division Summary" on page 34 for that division's Call for Service data

**Traffic Collision Reports
Charlotte-Mecklenburg Police Department: 2003-2004**

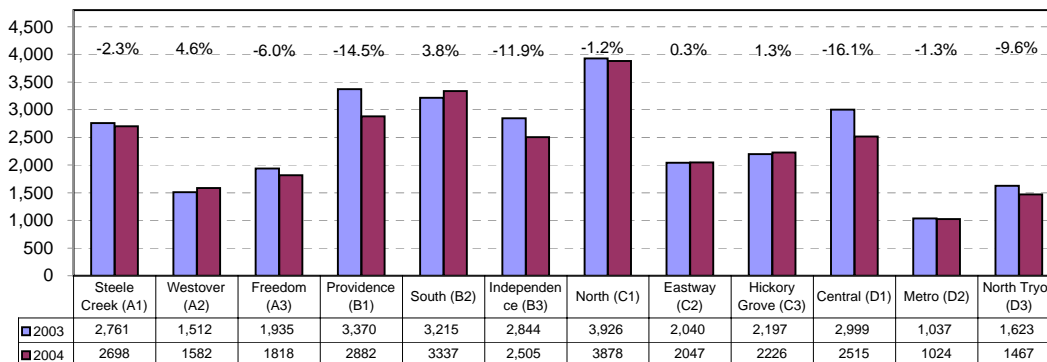
<u>Type</u>	<u>2003</u>	<u>2004</u>	<u>% Change</u>
Fatal Collisions	54	37	-31.5%
Vehicle Occupants Killed	50	33	-34.0%
Pedestrians Killed	8	6	-25.0%
Personal Injury Collisions	7438	6886	-7.6%
Property Damage Collisions	22114	21123	-4.5%
Total Collisions	29606	28046	-5.3%

* The number of fatal collisions and the number of persons killed in those incidents is taken from the HITS file. Their records are updated for deaths that occur after the initial report is filed.

**Traffic Collision Reports by Type
Charlotte-Mecklenburg Police Department: 2004**



**Traffic Collision Reports by Location (Division)
Charlotte-Mecklenburg Police Department: 2003 -2004**

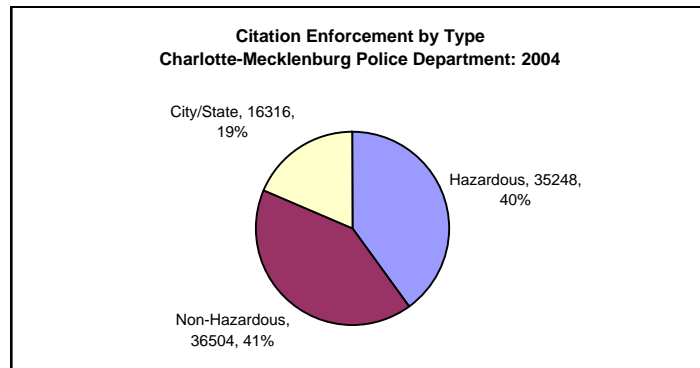


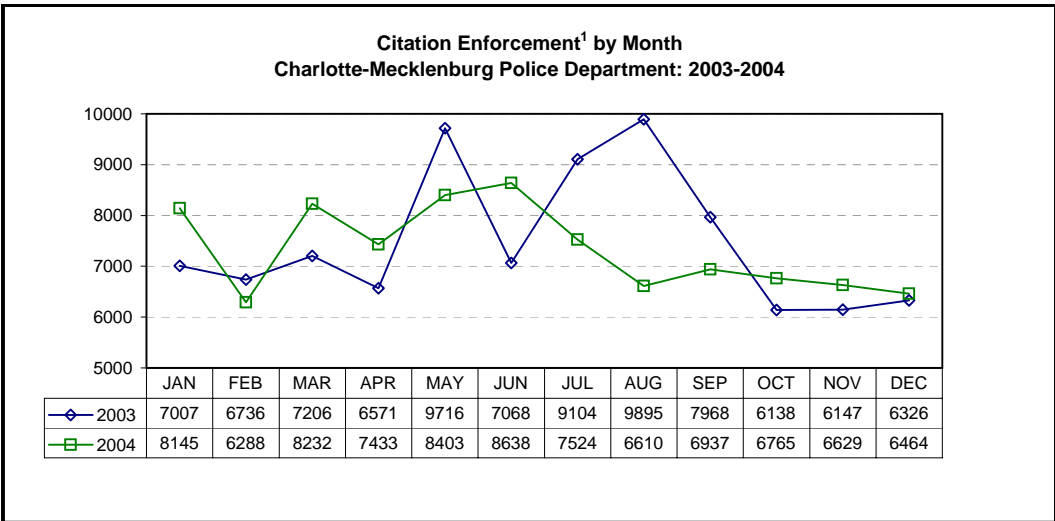
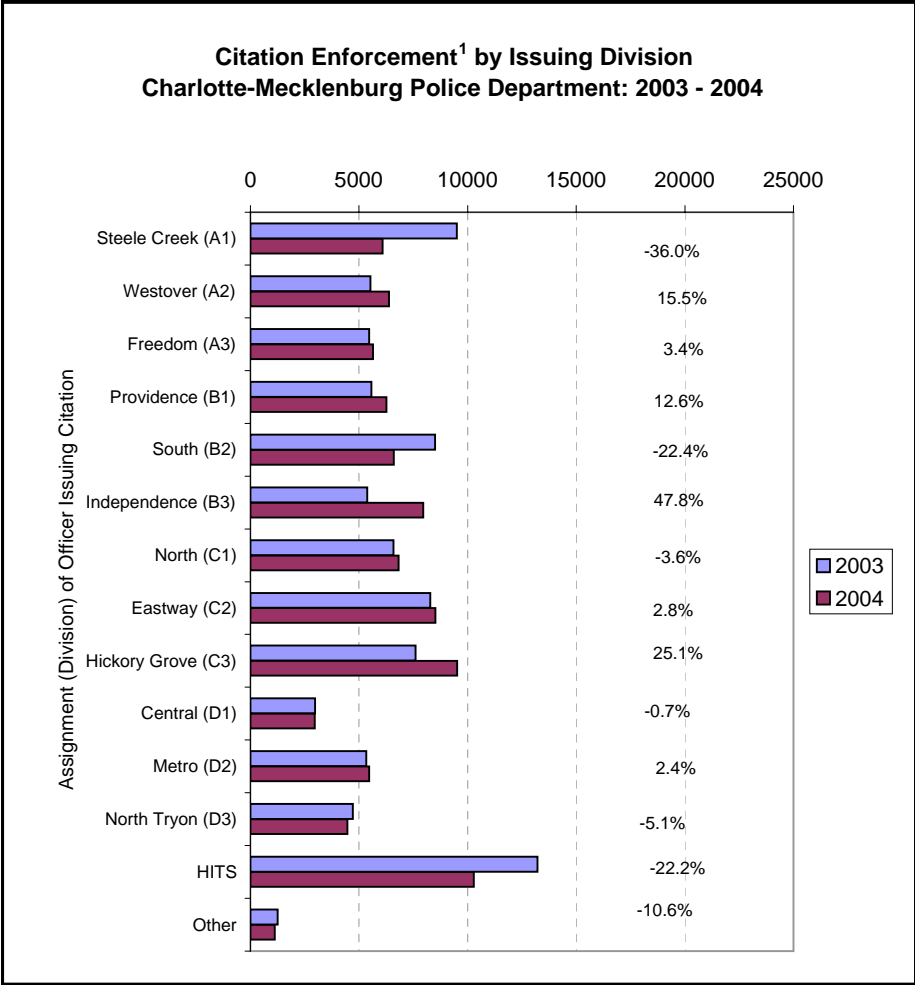
**CITATIONS ISSUED BY THE CHARLOTTE-MECKLENBURG POLICE DEPARTMENT
2003-2004**

<u>TYPE OF CITATION</u>	<u>2003</u>	<u>2004</u>	<u>% CHANGE</u>
SPEEDING ¹	29441	27150	-7.8%
IMPROPER TURN	1378	1219	-11.5%
RED LIGHT	1676	1469	-12.4%
STOP SIGN	1906	2638	38.4%
FAILURE TO YIELD RIGHT-OF-WAY	170	127	-25.3%
FOLLOWING TOO CLOSE	156	196	25.6%
ONE WAY STREET	54	50	-7.4%
IMPROPER PASSING	272	249	-8.5%
UNSAFE MOVEMENTS	552	502	-9.1%
RECKLESS DRIVING	671	875	30.4%
OTHERS-HAZARDOUS	342	458	33.9%
WRONG SIDE OF ROAD	107	87	-18.7%
TOTAL HAZARDOUS CITATIONS	36725	35020	-4.6%
NO DRIVERS LICENSE	8451	8253	-2.3%
IMPROPER TAGS,NO INS.,EXP.REG	16931	17967	6.1%
DRIVING WHILE LICENSE REVOKED	8772	9031	3.0%
DEFECTIVE EQUIPMENT VIOLATION	77	152	97.4%
HIT AND RUN	274	329	20.1%
TRUCK ORDINANCE	1	2	100.0%
IMPROPER LIGHTS	98	94	-4.1%
OTHER NON-HAZZARDOUS	274	595	117.2%
TOTAL NON-HAZARDOUS CITATIONS	34878	36423	4.4%
SMOKING ORDINANCE-COLISEUM	2	3	50.0%
SMOKING ORDINANCE-OTHER LOCATION	0	2	NA
NOISE VIOLATION	41	79	92.7%
LITTERING	88	88	0.0%
TAXICAB VIOLATIONS	2	2	0.0%
OTHER CITY ORDINANCES	2871	1826	-36.4%
TOTAL CITY ORDINANCE CITATIONS	3004	2000	-33.4%
DRIVING WHILE IMPAIRED	2139	2231	4.3%
DEATH BY VEHICLE	50	13	-74.0%
CHILD RESTRAINT	704	649	-7.8%
FAILURE TO USE SEAT BELT	7214	6168	-14.5%
SIMPLE ASSAULT	49	68	38.8%
WEAPONS VIOLATION	65	73	12.3%
SIMPLE POSSESSION MARIJUANA	1382	1047	-24.2%
DRUG PARAPHERNALIA	593	662	11.6%
LIGUOR LAW VIOLATION	2032	2019	-0.6%
OTHER STATE STATUTE CITATIONS	1047	1293	23.5%
TOTAL STATE STATUTE CITATIONS	15275	14223	-6.9%
TOTAL CITATIONS	89882	88068²	-2.0%

¹Citations issued through Safe Speed program are not included in the 2004 totals.

²Total includes citations that could not be listed in categories above due to coding, data entry or other errors.

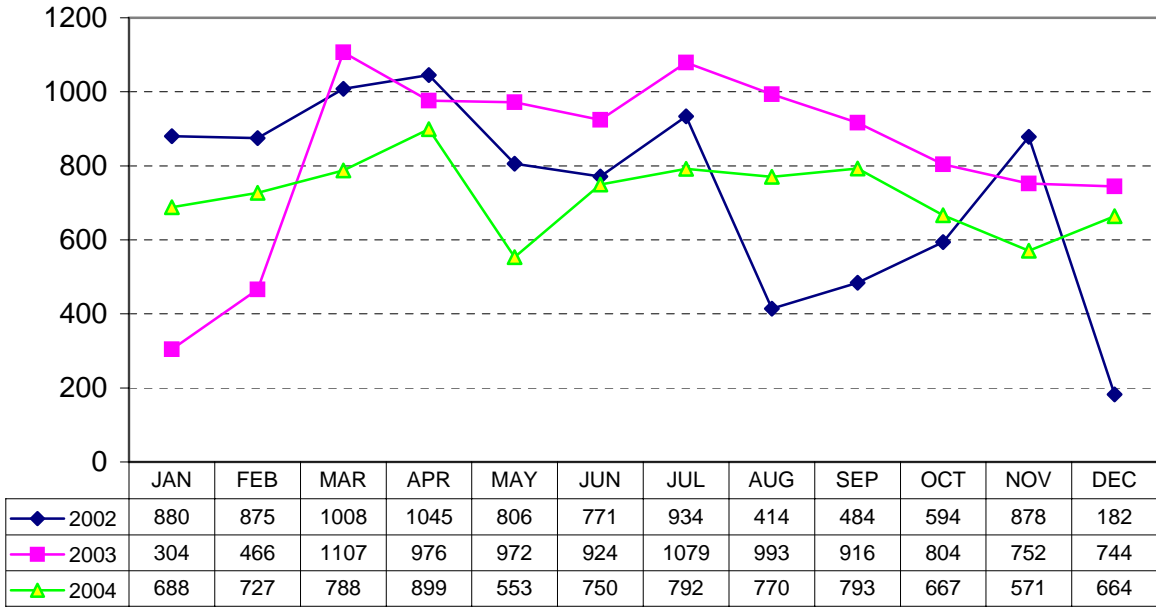




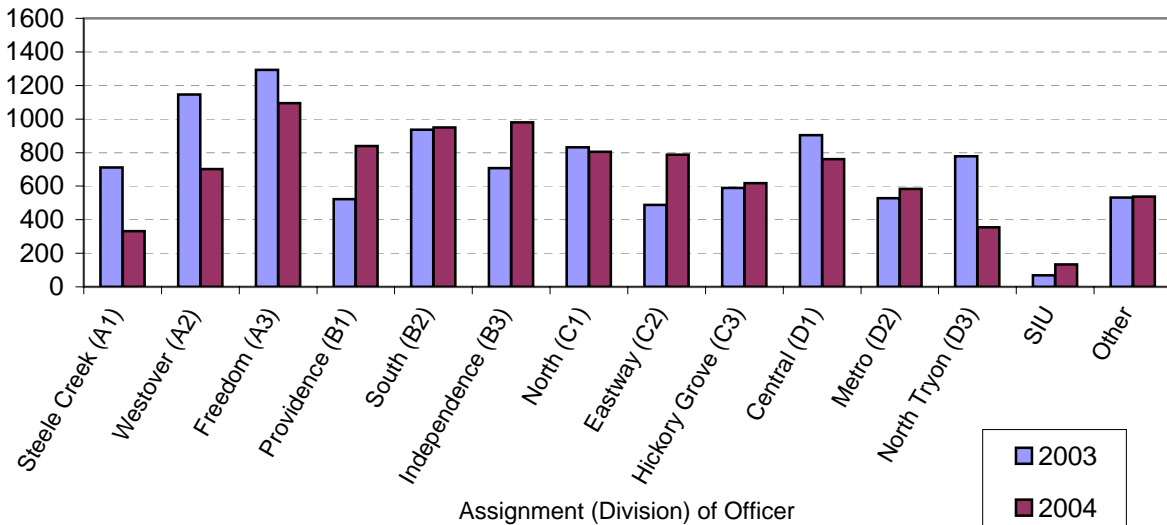
¹Totals in charts above do not include citations issued through the Safe Speed program.

"Safe Speed" Program: Initiated August, 2004	
Total Citations	8930

**Warning Tickets Issued by Month
Charlotte-Mecklenburg Police Department: 2002-2004**



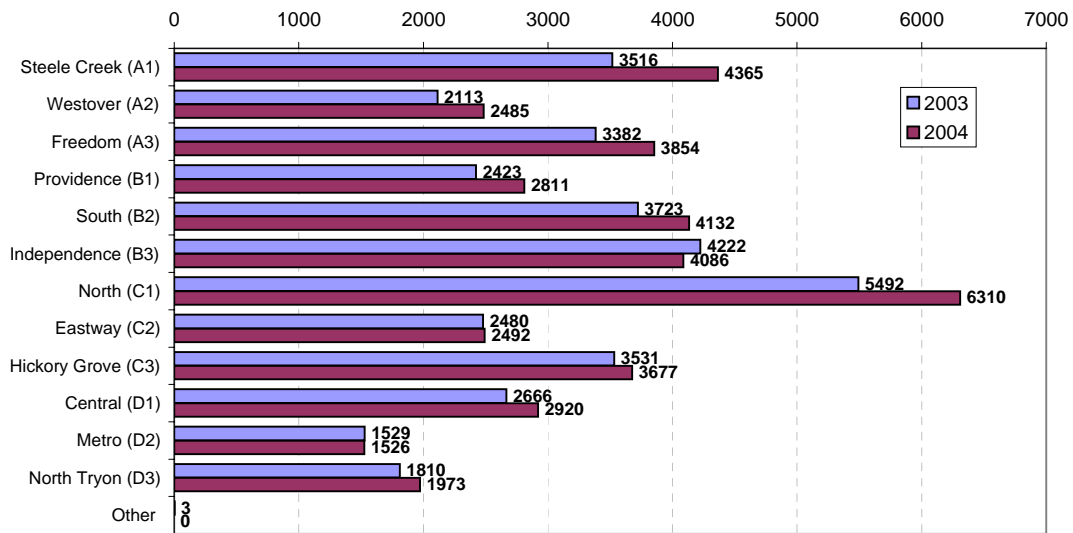
**Warning Tickets Issued by Division
Charlotte-Mecklenburg Police Department: 2003 - 2004**



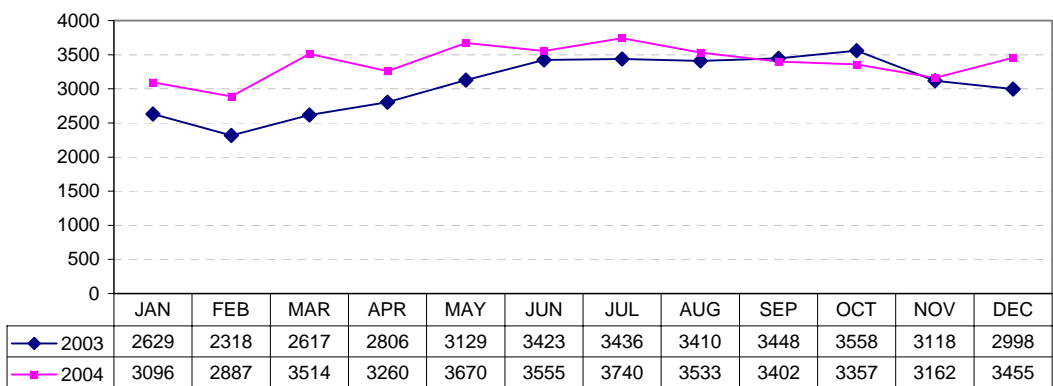
Warning Tickets Issued by Charlotte-Mecklenburg Police Department

	<u>2003</u>	<u>2004</u>	<u>% Change</u>
Total Issued	10037	9473	-5.6%

**Incident Reports by Non-Emergency Police Services (NEPS) by Division
Charlotte Mecklenburg Police Department: 2003-2004**



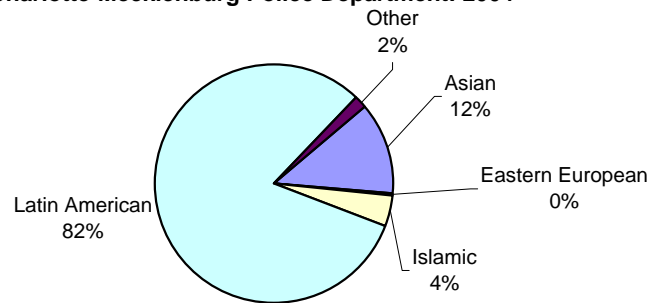
**Incident Reports by Non-Emergency Police Services (NEPS) by Month
Charlotte-Mecklenburg Police Department: 2003-2004**



**International Relations Unit: Initiatives and Activities by Type and Community Served
Charlotte-Mecklenburg Police Department: 2003-2004**

<u>Community Served</u>	<u>Problem Solving</u>	<u>Interdepartment Assistance</u>	<u>Community Meeting</u>	<u>Recruiting Initiative</u>	<u>Education & Training</u>	<u>Promotion & Partnerships</u>	<u>Interpreting</u>	<u>Other</u>	<u>Total</u>
2003									
Asian	20	10	8	4	9	12	40	0	103
Eastern European	1	0	0	0	0	0	0	0	1
Islamic	6	0	0	0	0	0	0	0	6
Latin American	29	226	41	17	31	22	426	0	792
Other	0	0	0	0	0	0	0	0	0
Total	56	236	49	21	40	34	466	0	902
2004									
Asian	32	20	12	4	24	10	50	10	162
Eastern European	0	0	0	0	6	0	0	0	6
Islamic	22	22	2	0	7	2	0	0	55
Latin American	63	314	29	26	83	36	505	8	1064
Other	0	2	0	1	3	11	0	6	23
Total	117	358	43	31	123	59	555	24	1310

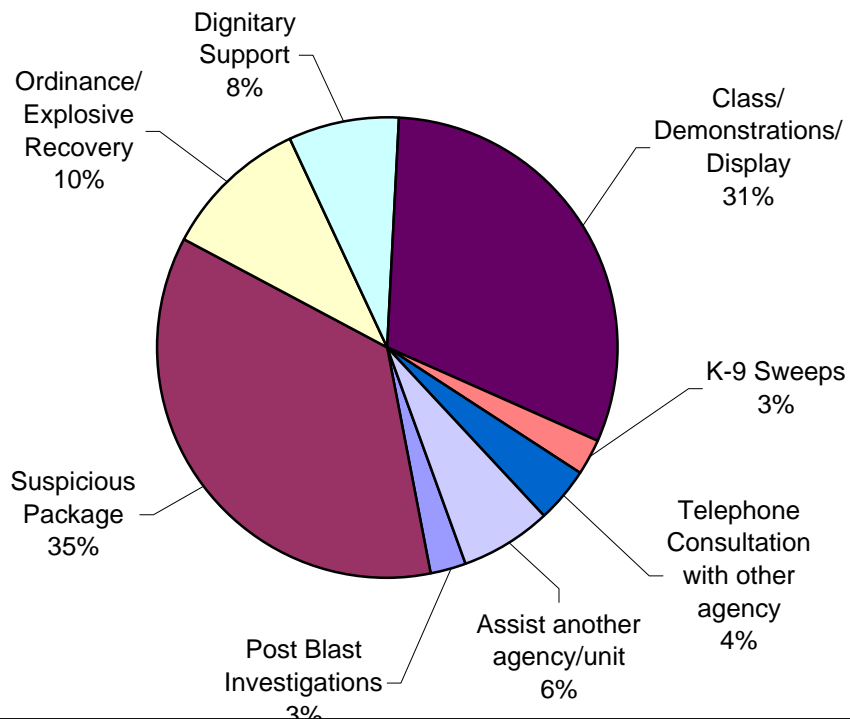
**International Relations Unit Activities by Community Served
Charlotte-Mecklenburg Police Department: 2004**



**Bomb Squad Callouts: 2004
Charlotte-Mecklenburg Police Department**

Type of Activity:	
Post Blast Investigations	2
Suspicious Package	28
Ordinance/ Explosive Recovery	8
Dignitary Support	6
Class/ Demonstrations/ Display	24
K-9 Sweeps	2
Telephone Consultation with other agency	3
Assist another agency/unit	5
Total Callouts/Activities	78
Total manhours	695 hours

**Bomb Squad Callouts by Type: 2004
Charlotte-Mecklenburg Police Department**



SWAT Deployments: 2003-2004
Charlotte-Mecklenburg Police Department

Deployments by Division:	<u>2003</u>	<u>2004</u>
Steele Creek	4	4
Westover	4	0
Freedom	6	6
Providence	0	0
South	0	2
Independence	2	5
North	3	5
Eastway	2	1
Hickory Grove	1	5
Central	0	1
Metro	1	1
North Tryon	3	2
Mobile	0	3
Mint Hill	0	1
Pineville	0	1
Total	26	37
% Change		42%

Deployments by Type:	<u>2003</u>	<u>2004</u>
Barricaded Subjects	9	12
High Risk Warrants	15	12
Hostage Taking	2	2
Dignitary Protections	0	3
Search & Rescue	1	2
Surveillance	2	2
Fugitive/Hostile Suspect Takedowns	0	4

SWAT Training Hours: 2004
Charlotte-Mecklenburg Police Department

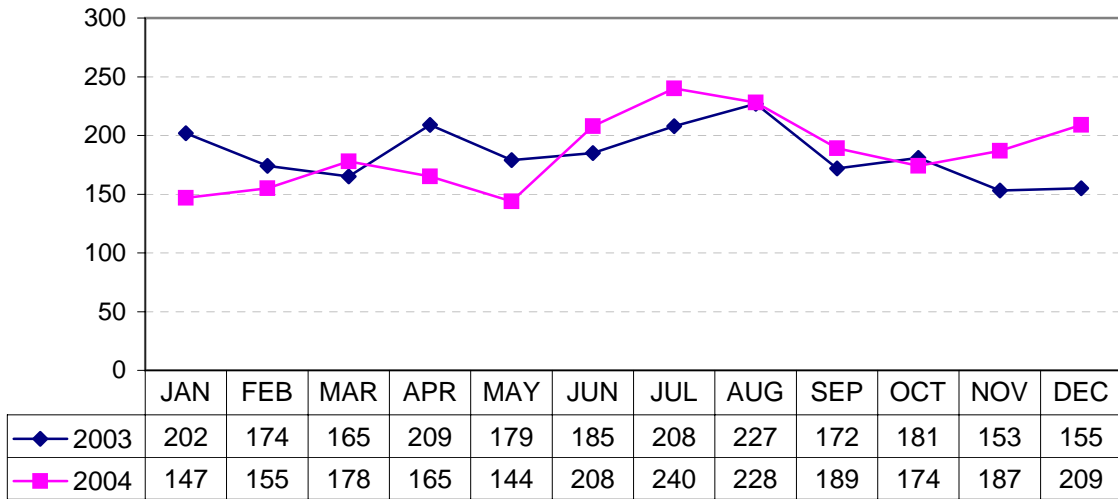
Training by Activity:	Hours
Firearms Training	96
Tactical Training other than firearms ¹	120
Total	216
Specialized Assignments:	
Sniper Training	96
Grenadier Training	32
Helicopter Air Assault	32

¹Includes training in Dynamic Entry, Hostage Rescue, Vehicle Takedown, Covert Apprehension, Flash Bang, Gas Munitions and Less Lethal Certification, Bus Assaults, Aircraft Training, Woodland Movement, Search and Rescue, Downed Officer rescue, Waterborne Training, and Chemical/Biological Training.

K-9 Unit Activities Summary: 2003-2004
Charlotte-Mecklenburg Police Department

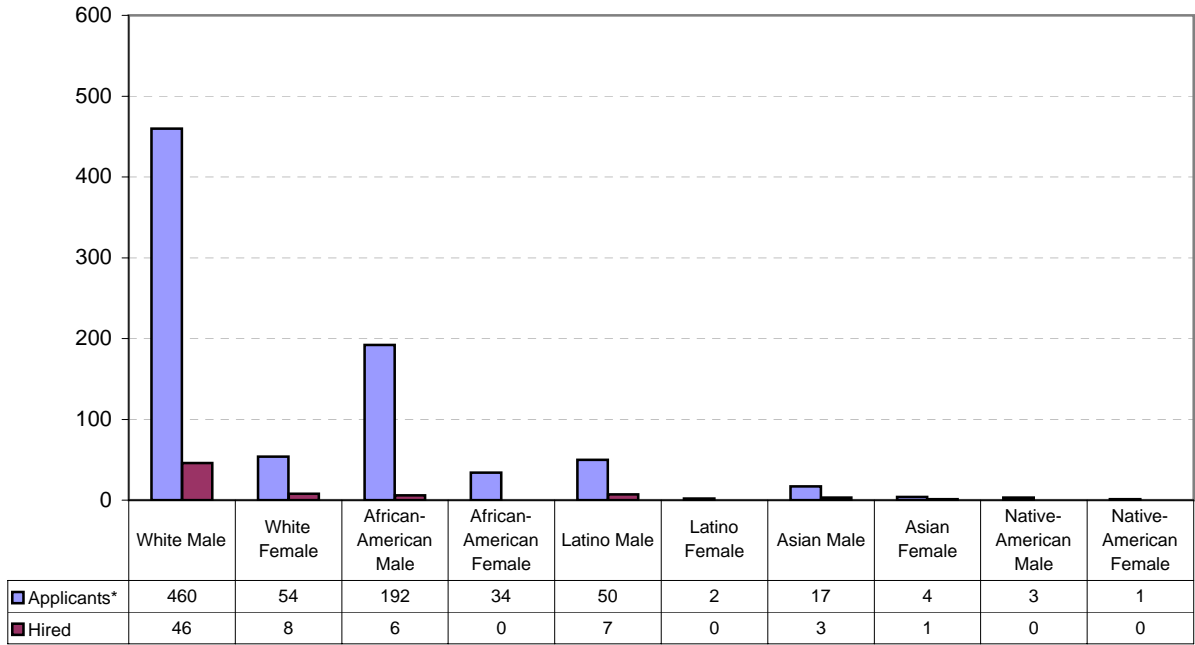
K-9 Tasks:	<u>2003</u>	<u>2004</u>
Assist	174	112
Tracks	819	810
Area Search	26	21
Building Search	250	230
Missing Persons	64	67
Missing Persons Located	6	4
Bomb Calls	49	21
Suspects Located	210	148
Drugs Calls	218	183
Drugs Located	31	31
Evidence Located	98	65
K-9 Demonstrations:	<u>2003</u>	<u>2004</u>
Total	44	38

K-9 Unit Calls by Month
Charlotte-Mecklenburg Police Department: 2003-2004

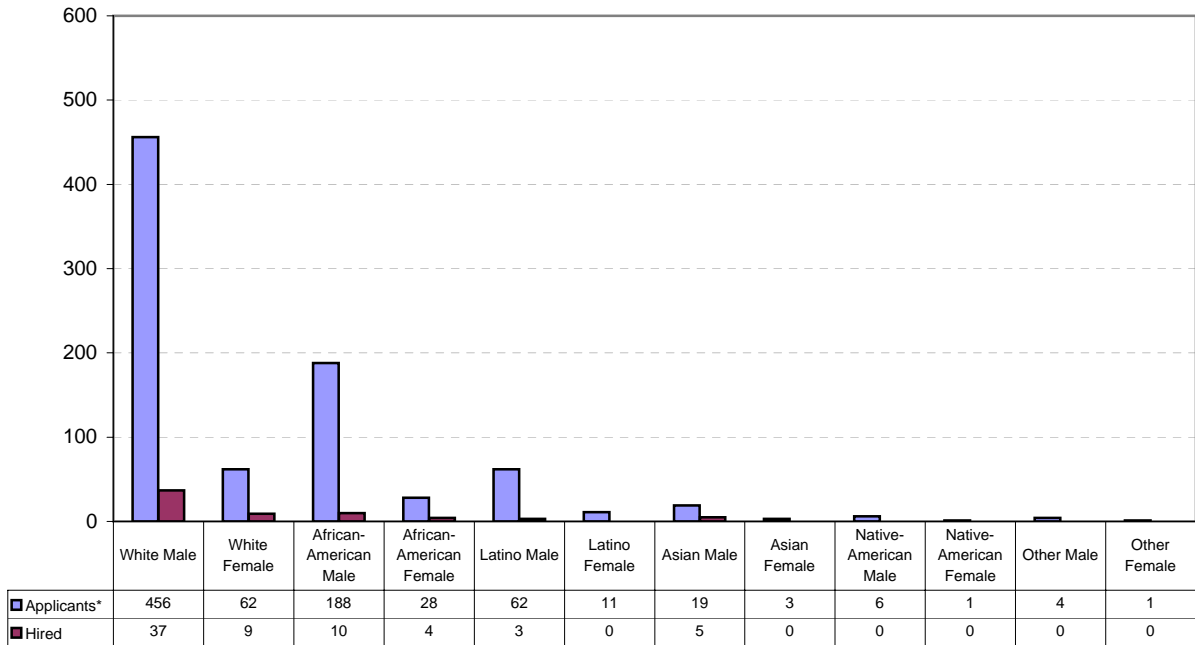


Total Calls:	
2003	2210
2004	2224

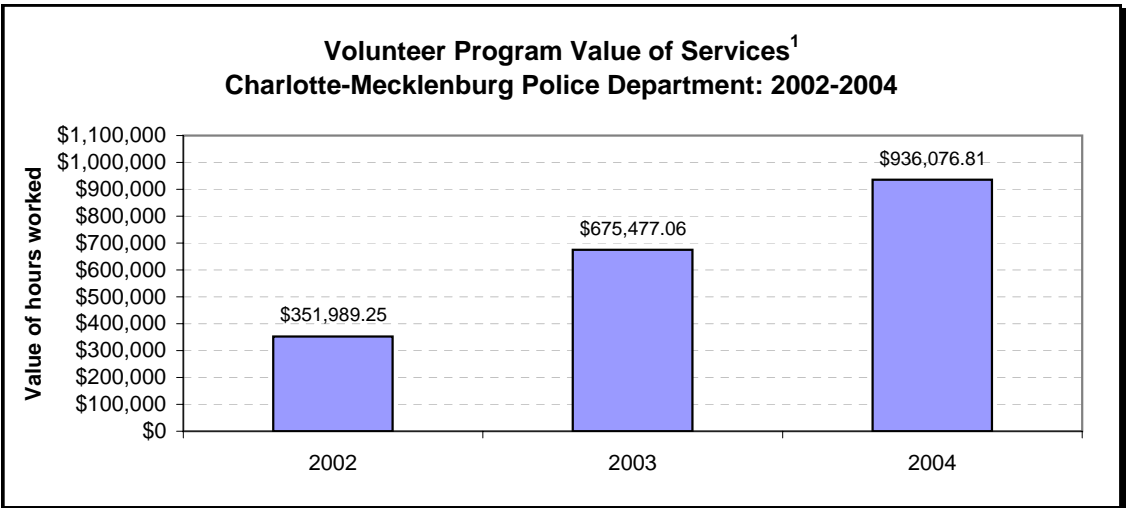
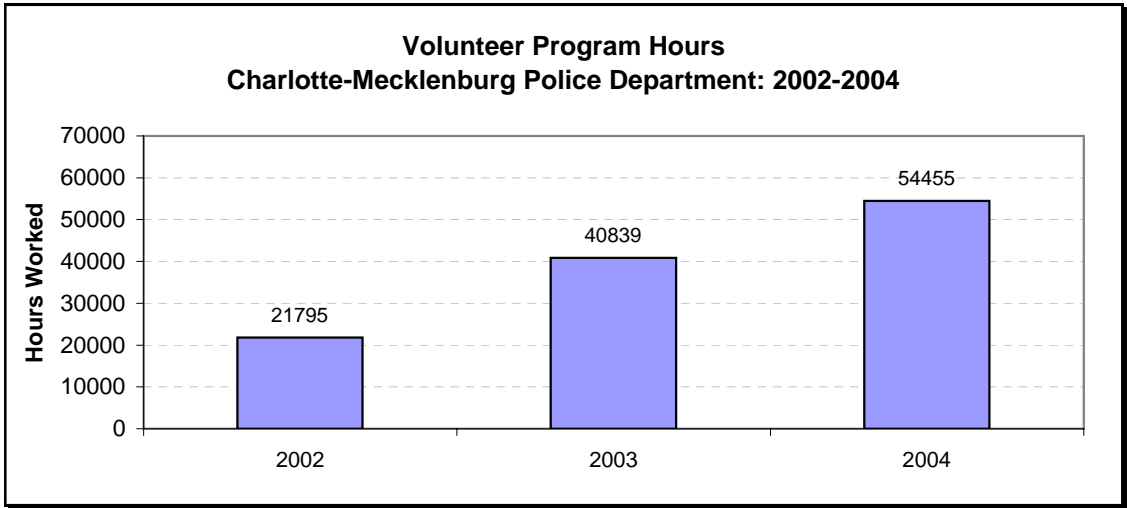
**Recruiting Division: Applicants Processed and Hired
Charlotte-Mecklenburg Police Department: 2003**



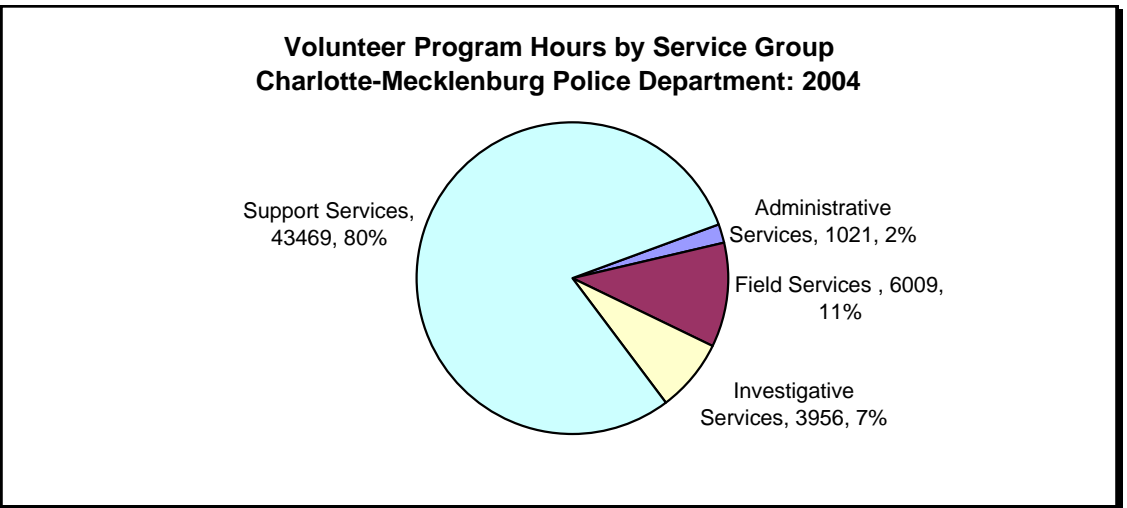
**Recruiting Division: Applicants Processed and Hired
Charlotte-Mecklenburg Police Department: 2004**



*The number of applicants processed includes the number hired.



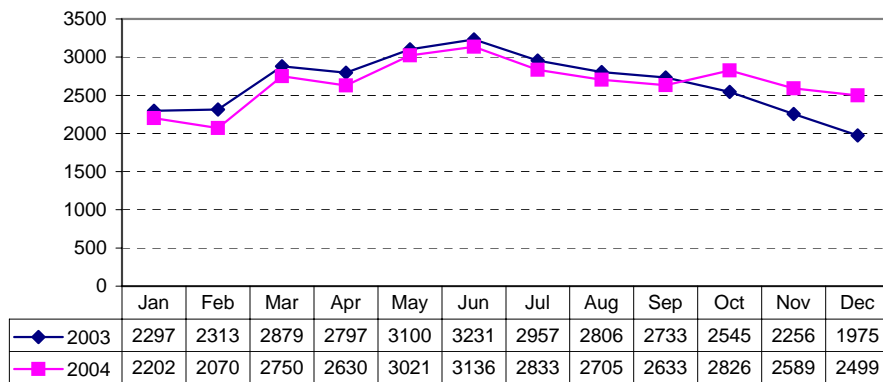
¹The total value for each year is calculated based on the value of a volunteer hour taken from annual studies published by the Points of Light Foundation and the Independent Sector.



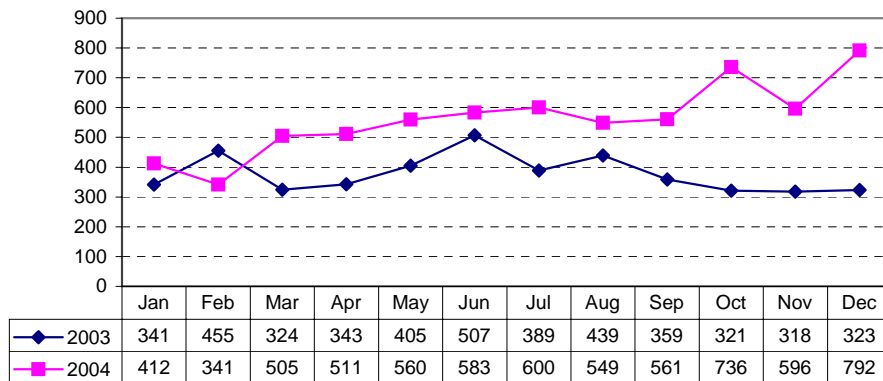
**Animal Control Division Summary
Charlotte-Mecklenburg Police Department: 2003-2004**

Activities:	2003	2004	% Change
Calls for Service	31889	31894	0.0%
Citations Issued	4524	6746	49.1%
Animal License Tags Issued	33290	57262	72.0%
Animal License Cards Sent Out	50873	98167	93.0%
Status of Animals:			
Total Incoming	20968	20016	-4.5%
Total Outgoing	20742	20011	-3.5%
Total Adopted	3098	3195	3.1%
Total Reclaimed	2099	2014	-4.0%
Total Euthanized	14807	13991	-5.5%

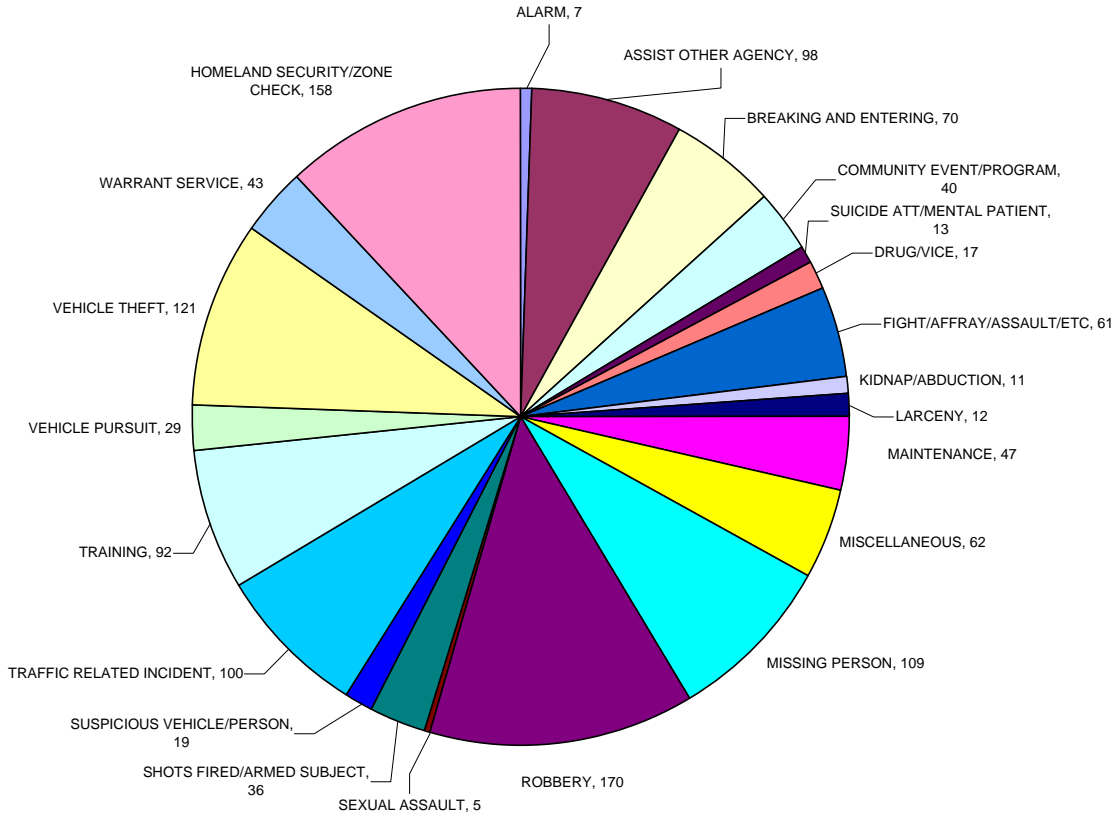
**Animal Control Division Calls by Month
Charlotte-Mecklenburg Police Department: 2003-2004**



**Animal Control Division Citations Issued by Month
Charlotte-Mecklenburg Police Department: 2003-2004**



Aviation Unit Activities/Calls by Type: 2004 Charlotte-Mecklenburg Police Department



Aviation Unit Activity Summary: 2003-2004

	<u>2003</u>	<u>2004</u>
Total Calls for Year	766	1320
Total Assists in Arrests for Year	177	254
Total Direct Arrests for Year	25	52
Total Hours Flown	658.6	817.6

**Civil Emergency Unit Activities: 2003-2004
Charlotte-Mecklenburg Police Department**

	<u>2003</u>	<u>2004</u>
Event Activations/Standby Notifications	7	9
Training Sessions	19	30
Training Hours	168	340
4th Unit Established	300 Members	

**Intelligence Division Annual Summary: 2003-2004
Charlotte-Mecklenburg Police Department**

Crime Stoppers Program Activity: 2003-2004		
<u>Crime Stoppers</u>	<u>2003</u>	<u>2004</u>
Calls made to Crime Stoppers	1,584	1429
Arrests made through tips	193	153
Cases cleared through tips	423	170
Property recovered through tips	\$57,848.00	449,596.00
Rewards approved for tipsters	\$21,460.00	\$24,240.00
<u>Campus Crime Stoppers (2002-2003 School Year)</u>		
Campus Crime Stoppers tips	61	85
Arrests based on Campus Crime Stoppers tips	58	109
Cases cleared based on Campus Crime Stoppers tips	78	88
Property recovered through tips	\$2,378.00	\$2,671.00
Rewards approved for tipsters	\$3,840.00	\$5,140.00

Criminal Intelligence Unit (CIU) and Gang Intelligence Unit (GIU) Summary: 2003-2004		
<u>Information Systems</u>	<u>2003</u>	<u>2004</u>
Number of Officer Threat Bulletins sent	43	51
Number of Intelligence Bulletins sent	7	33
<u>Hate Crimes</u>		
Hate Crimes	12	8
Hate Incidents (non-criminal)	6	3
Cases initially reported as hate crime, but did not meet the criteria after review	31	42
<u>Gang Intelligence</u>		
Number of incidents initially referred to GIU for review		
<i>***** These are incidents initially documented as gang-related. They do not reflect incidents that were verified as gang-related after review. *****</i>		
Juvenile incidents	248	202
All other incidents	222	193
Total incidents	470	395
Subjects entered into the gang database	238	230

**Passenger Vehicles for Hire (PVH) Unit: 2002-2004
Charlotte-Mecklenburg Police Department**

	2002	2003	2004
New PVH company applications	7	12	21
PVH company re-certifications	67	51	56
PVH vehicle permits (Taxicab)	986*	370	512
PVH vehicle permits (Limousine and Town Car)	144*	86	154
PVH vehicle permits (Contract, Special Needs, Shuttle Van)		144	101
PVH Driver Training Course Completions (one-time requirement)	0	0	718
New PVH Driver/Chauffeur permits	352	237	354
Driver/Chauffuer re-certifications	1226*	422	494
PVH Board and Administrative Appeal hearings	24	15	12

* Data includes totals from 2001 and 2002

A p p e n d i x

INDEX CRIMES REPORTED TO THE CHARLOTTE POLICE DEPARTMENT (1974-1993) AND CHARLOTTE-MECKLENBURG POLICE (1994-2004)

CHARLOTTE POLICE DEPARTMENT:																
	1974	1975	1976	1977	1978	1979	1980	1981	1982	1983	1984	1985	1986	1987	1988	1989
HOMICIDE	60	68	52	46	51	49	60	52	47	44	54	58	58	49	45	73
RAPE	58	71	84	118	113	116	142	198	197	258	243	226	302	301	311	320
ROBBERY	1005	822	731	614	709	702	686	773	990	1103	1143	1121	1454	1486	1933	2369
AGG. ASSAULT	1121	976	1028	1465	1561	1617	1868	2143	2864	2863	2990	3172	3675	4147	4521	4874
BURGLARY TOTAL	8779	8565	7236	7312	7009	6676	8245	8587	8805	8108	8664	8563	9598	10117	10605	12772
RESIDENTIAL	5112	5146	4510	4672	4692	4074	4924	4972	4583	4641	5290	5100	6347	6583	6851	7956
COMMERCIAL	3667	3419	2726	2640	2317	2602	3321	3615	4222	3467	3374	3463	3251	3534	3754	4813
LARCENY TOTAL	10671	12587	13626	12432	12428	12563	13760	16444	18762	17773	18272	18447	18637	21723	24236	26228
FROM AUTO	4027	5871	7442	6361	5868	5898	6505	7842	8633	7785	8218	7835	7081	8175	8885	9876
BICYCLE	1445	1331	1050	1060	1060	947	1156	859	1093	1066	950	857	816	697	602	589
SHOPLIFT	1868	1869	1851	1758	1954	2049	2003	2427	3315	3085	3271	3356	3611	4523	5344	5297
OTHER	3331	3516	3283	3253	3546	3669	4096	5316	5721	5837	5858	6399	7129	8328	9405	10648
VEHICLE THEFT	1218	1082	898	1006	1246	1263	1444	1449	1320	1337	1375	1502	1659	1777	2323	2701
TOTAL INDEX WITHOUT ARSON	22912	24171	23655	22993	23117	22986	26205	29646	32985	31486	32766	33089	35383	39600	43974	49337
ARSON ¹	(Arson was not added to the Index until 1980 and prior arson data is not available.)						200	160	190	259	329	268	315	297	365	332
TOTAL INDEX	(Arson was not added to the Index until 1980 and prior arson data is not available.)						26405	29806	33175	31745	33095	33357	35698	39897	44339	49669
VIOLENT PROPERTY	2244	1937	1895	2243	2434	2484	2756	3166	4098	4268	4430	4577	5489	5983	6810	7636
YEARLY % CHANGE IN TOTAL INDEX	(Arson was not added to the Index until 1980 and prior arson data is not available.)							12.90%	11.30%	-4.30%	4.30%	0.80%	7.00%	11.80%	11.10%	12.0%

CHARLOTTE POLICE DEPARTMENT:					CHARLOTTE-MECKLENBURG POLICE DEPARTMENT:											
	1990	1991	1992	1993	*	1994	1995	1996	1997	1998	1999	2000	2001	2002	2003	2004
HOMICIDE	93	115	99	122	*	88	89	71	59	65	84	75	66	67	66	60
RAPE	381	402	354	356	*	351	362	304	342	326	265	304	292	289	299	307
ROBBERY	3208	2899	3058	3227	*	2711	2949	2595	2716	2400	2517	2651	2996	2893	2688	2786
AGG. ASSAULT	5434	5340	5938	6020	*	5952	5824	5944	6045	5829	5275	4482	4420	4334	4137	4118
BURGLARY TOTAL	10891	11615	12565	10692	*	10325	9959	10227	10413	10701	10314	9598	10285	10516	11066	12021
RESIDENTIAL	6836	7247	8475	6763	*	6991	6673	6877	6945	6390	6737	6518	6397	7213	7876	8441
COMMERCIAL	4055	4358	4090	3929	*	3334	3286	3350	3468	4311	3577	3080	3888	3303	3190	3580
LARCENY TOTAL	27153	27799	27014	26370	*	28468	29273	30199	28922	29256	30116	27789	27291	25860	26628	28129
FROM AUTO	9891	10960	10830	10968	*	10950	11247	12995	12623	12876	13625	12461	11966	13171	14044	14511
BICYCLE	542	552	666	553	*	682	859	665	562	567	399	252	175	173	206	248
SHOPLIFT	4992	5517	4778	4300	*	4064	3934	3964	3893	3619	3569	3050	3477	3182	2777	2866
OTHER	11728	10770	10740	10549	*	12772	13233	12575	11844	12194	12523	12024	11673	9334	9601	10504
VEHICLE THEFT	2699	2726	2454	2972	*	3160	3650	4177	4383	3918	4845	4561	4406	4638	6840	6777
TOTAL INDEX WITHOUT ARSON	49859	50896	51482	49759	*	51055	52106	53517	52880	52495	53416	49460	49756	48597	51724	54198
ARSON ¹	418	442	413	388	*	418	346	440	350	266	287	313	317	455	300	348
TOTAL INDEX	50277	51338	51895	50147	*	51473	52452	53957	53230	52761	53703	49773	50073	49052	52024	54546
VIOLENT PROPERTY	9116	8756	9449	9725	*	9102	9224	8914	9162	8620	8141	7512	7774	7583	7190	7271
YEARLY % CHANGE IN TOTAL INDEX	1.2%	2.1%	1.1%	-3.4%	*	-4.4%	1.9%	2.9%	-1.3%	-0.9%	1.8%	-7.3%	0.6%	-2.0%	6.1%	4.8%

RATES PER 100,000 ESTIMATED POPULATION REPORTED BY CHARLOTTE POLICE DEPARTMENT (1974-1993)² AND CHARLOTTE-MECKLENBURG POLICE DEPARTMENT (1994-2004)³

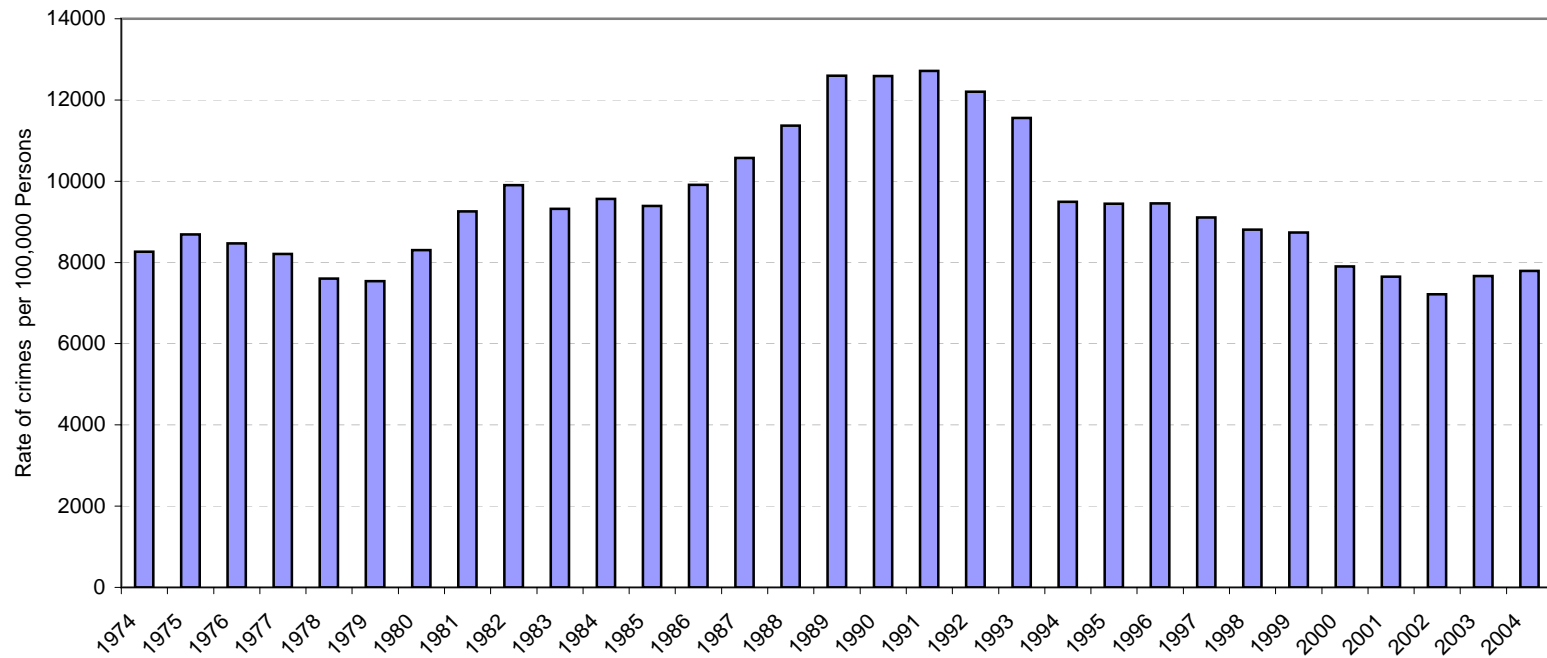
	CHARLOTTE POLICE DEPARTMENT:															
	1974	1975	1976	1977	1978	1979	1980	1981	1982	1983	1984	1985	1986	1987	1988	1989
EST. JURISDICTION POPULATION	277364	278263	279180	280097	304087	305004	315473	320191	333176	337895	342613	352332	357051	374546	386846	391565
HOMICIDE	21.6	24.4	18.6	16.4	16.8	16.1	19.0	16.2	14.1	13.0	15.8	16.5	16.2	13.1	11.6	18.6
RAPE	20.9	25.5	30.1	42.1	37.2	38.0	45.0	61.8	59.1	76.4	70.9	64.1	84.6	80.4	80.4	81.7
ROBBERY	362.3	295.4	261.8	219.2	233.2	230.2	217.5	241.4	297.1	326.4	333.6	318.2	407.2	396.7	499.7	605.0
AGG. ASSAULT	404.2	350.7	368.2	523.0	513.3	530.2	592.1	669.3	859.6	847.3	872.7	900.3	1029.3	1107.2	1168.7	1244.7
BURGLARY TOTAL	3165.2	3078.0	2591.9	2610.5	2304.9	2188.8	2613.5	2681.8	2642.7	2399.6	2528.8	2430.4	2688.1	2701.1	2741.4	3261.8
RESIDENTIAL	1843.1	1849.3	1615.4	1668.0	1543.0	1335.7	1560.8	1552.8	1375.5	1373.5	1544.0	1447.5	1777.6	1757.6	1771.0	2031.8
COMMERCIAL	1322.1	1228.7	976.4	942.5	762.0	853.1	1052.7	1129.0	1267.2	1026.1	984.8	982.9	910.5	943.5	970.4	1229.2
LARCENY TOTAL	3847.3	4523.4	4880.7	4438.5	4087.0	4119.0	4361.7	5135.7	5631.3	5259.9	5340.4	5235.7	5219.7	5799.8	6265.0	6698.2
FROM AUTO	1451.9	2109.9	2665.7	2271.0	1929.7	1933.7	2062.0	2449.2	2591.1	2304.0	2398.6	2223.8	1983.2	2182.6	2296.8	2522.2
BICYCLE	521.0	478.3	376.1	378.4	348.6	310.5	366.4	268.3	328.1	315.5	277.3	243.2	228.5	186.1	155.6	150.4
SHOPLIFT	673.5	671.7	663.0	627.6	642.6	671.8	634.9	758.0	995.0	913.0	954.7	952.5	1011.3	1207.6	1381.4	1352.8
OTHER	1200.9	1263.6	1175.9	1161.4	1166.1	1202.9	1298.4	1660.3	1717.1	1727.5	1709.8	1816.2	1996.6	2223.5	2431.2	2719.3
VEHICLE THEFT	439.1	388.8	321.7	359.2	409.8	414.1	457.7	452.5	396.2	395.7	401.3	426.3	464.6	474.4	600.5	689.8
TOTAL INDEX WITHOUT ARSON	8260.6	8686.4	8473.0	8208.9	7602.1	7536.3	8306.6	9258.8	9900.2	9318.3	9563.6	9391.4	9909.8	10572.8	11367.3	12600.0
ARSON ¹	¹ (Arson was not added to the Index until 1980 and prior arson data is not available.)						63.4	50.0	57.0	76.7	96.0	76.1	88.2	79.3	94.4	84.8
TOTAL INDEX							8370.0	9308.8	9957.2	9394.9	9659.6	9467.5	9998.0	10652.1	11461.7	12684.7
VIOLENT PROPERTY	809.0	696.1	678.8	800.8	800.4	814.4	873.6	988.8	1230.0	1263.1	1293.0	1299.1	1537.3	1597.4	1760.4	1950.1
YEARLY % CHANGE IN TOTAL INDEX	¹ (Arson was not added to the Index until 1980 and prior arson data is not available.)						NA		11.2%	7.0%	-5.6%	2.8%	-2.0%	6.5%	7.6%	10.70%

²Population estimates for the city of Charlotte from 1973-1994 are from the Research Section of the Charlotte Chamber of Commerce.

	CHARLOTTE POLICE DEPARTMENT:				*	CHARLOTTE-MECKLENBURG POLICE DEPARTMENT:										
	1990	1991	1992	1993		1994	1995	1996	1997	1998	1999	2000	2001	2002	2003	2004
EST. JURISDICTION POPULATION	395934	400303	421990	430430	*	537629	551608	566226	580664	595762	611251	625810	650407	673177	674509	695487
HOMICIDE	23.5	28.7	23.5	28.3	*	16.4	16.1	12.5	10.2	10.9	13.7	12.0	10.1	10.0	9.8	8.6
RAPE	96.2	100.4	83.9	82.7	*	65.3	65.6	53.7	58.9	54.7	43.4	48.6	44.9	42.9	44.3	44.1
ROBBERY	810.2	724.2	724.7	749.7	*	504.3	534.6	458.3	467.7	402.8	411.8	423.6	460.6	429.8	398.5	400.6
AGG. ASSAULT	1372.5	1334.0	1407.1	1398.6	*	1107.1	1055.8	1049.8	1041.0	978.4	863.0	716.2	679.6	643.8	613.3	592.1
BURGLARY TOTAL	2750.7	2901.6	2977.6	2484.0	*	1920.5	1805.4	1806.2	1793.3	1796.2	1687.4	1533.7	1581.3	1562.1	1640.6	1728.4
RESIDENTIAL	1726.6	1810.4	2008.3	1571.2	*	1300.3	1209.7	1214.5	1196.0	1072.6	1102.2	1041.5	983.5	1071.5	1167.7	1213.7
COMMERCIAL	1024.2	1088.7	969.2	912.8	*	620.1	595.7	591.6	597.2	723.6	585.2	492.2	597.8	490.7	472.9	514.7
LARCENY TOTAL	6858.0	6944.5	6401.6	6126.4	*	5295.1	5306.8	5333.4	4980.8	4910.7	4926.9	4440.5	4196.0	3841.5	3947.8	4044.5
FROM AUTO	2498.1	2737.9	2566.4	2548.1	*	2036.7	2038.9	2295.0	2173.9	2161.3	2229.0	1991.2	1839.8	1956.5	2082.1	2086.5
BICYCLE	136.9	137.9	157.8	128.5	*	126.9	155.7	117.4	96.8	95.2	65.3	40.3	26.9	25.7	30.5	35.7
SHOPLIFT	1260.8	1378.2	1132.3	999.0	*	755.9	713.2	700.1	670.4	607.5	583.9	487.4	534.6	472.7	411.7	412.1
OTHER	2962.1	2690.5	2545.1	2450.8	*	2375.6	2399.0	2220.8	2039.7	2046.8	2048.7	1921.3	1794.7	1386.6	1423.4	1510.3
VEHICLE THEFT	681.7	681.0	581.5	690.5	*	587.8	661.7	737.7	754.8	657.6	792.6	728.8	677.4	689.0	1014.1	974.4
TOTAL INDEX WITHOUT ARSON	12592.8	12714.4	12199.8	11560.3	*	9496.3	9446.2	9451.5	9106.8	8811.4	8738.8	7903.4	7650.0	7219.1	7668.4	7792.8
ARSON ¹	105.6	110.4	97.9	90.1	*	77.7	62.7	77.7	60.3	44.6	47.0	50.0	48.7	67.6	44.5	50.0
TOTAL INDEX	12698.3	12824.8	12297.7	11650.4	*	9574.1	9508.9	9529.2	9167.1	8856.1	8785.8	7953.4	7698.7	7286.6	7712.9	7842.8
VIOLENT PROPERTY	2302.4	2187.3	2239.2	2259.4	*	1693.0	1672.2	1574.3	1577.8	1446.9	1331.9	1200.4	1195.3	1126.4	1066.0	1045.5
YEARLY % CHANGE IN TOTAL INDEX	0.10%	1.00%	-4.10%	-5.30%	*	-6.80%	-0.70%	0.20%	-3.80%	-3.40%	-0.80%	-9.50%	-3.2%	-5.4%	5.8%	1.7%

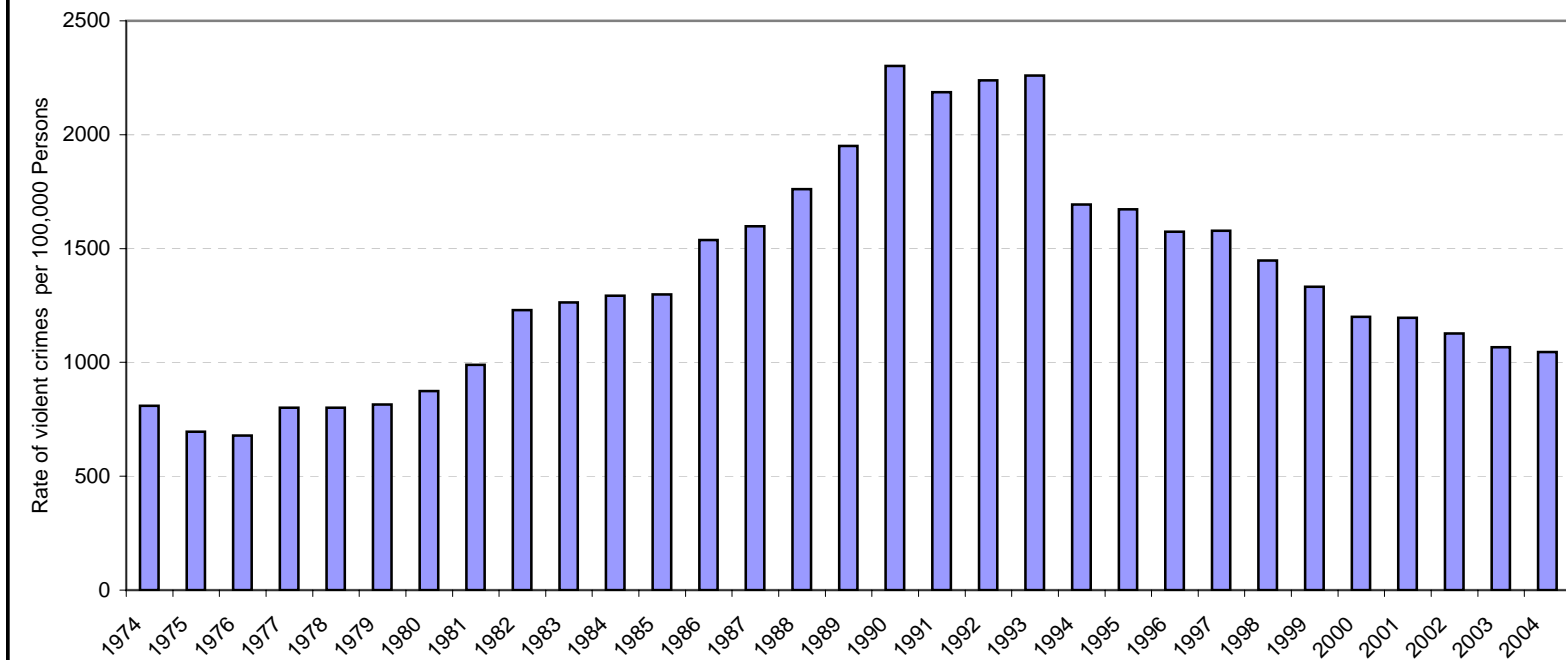
³The population estimates for the C-MPD jurisdiction in 1994-1999 were extrapolated using the Chamber of Commerce's estimates of the yearly percentage changes in the Mecklenburg County population, applied to the 1990 Census base population for the jurisdiction. The 2000 population is based on the Census totals for Mecklenburg County excluding the totals for the incorporated towns (except Mint Hill). The jurisdiction populations after Census 2000 are now based on Planning Commission estimates published in July each year; rate calculations may therefore show slight differences from previous annual reports based on estimates from other sources. The population for 2003 does not include Mint Hill, although the crime totals do include crimes occurring in Mint Hill during the first half of the year prior to July 1, 2003.

Index Crime Rates Per 100,000 Est. Jurisdiction Population¹
Charlotte Police Dept. (1974-1993) and Charlotte-Mecklenburg Police Dept. (1994-2004)



¹See notes on page ii on population sources and rate calculations.

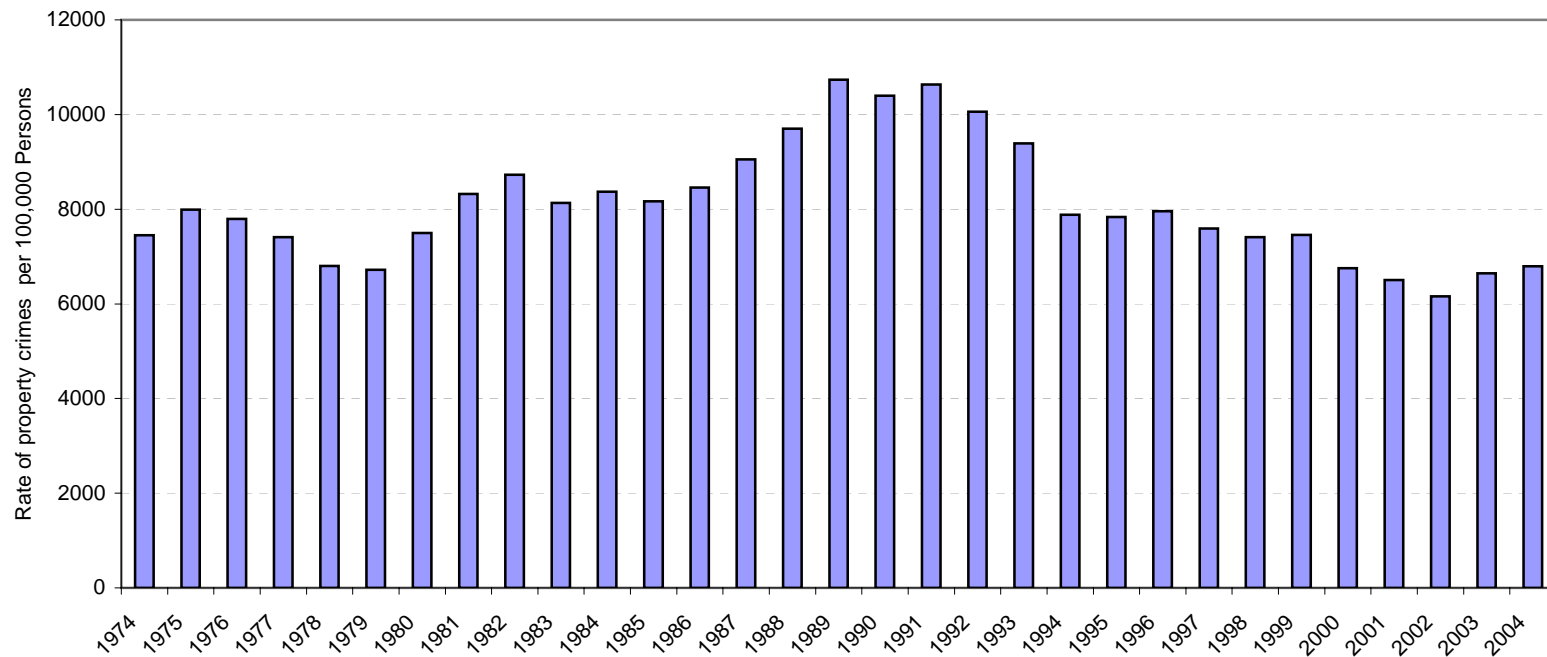
**Violent Index¹ Crime Rates Per 100,000 Est. Jurisdiction Population²
Charlotte Police Dept. (1974-1993) and Charlotte-Mecklenburg Police Dept. (1994-2004)**



¹Violent Index includes homicide, rape, robbery, and aggravated assault.

²See notes on page ii on population sources and rate calculations.

**Property Index¹ Crime Rates Per 100,000 Est. Jurisdiction Population²
Charlotte Police Dept. (1974-1993) and Charlotte-Mecklenburg Police Dept. (1994-2004)**



¹Property Index includes burglary, larceny, vehicle theft and arson (arson not included 1973-1979).

²See notes on page ii on population sources and rate calculations.

Uniform Crime Reporting Procedures:

The Charlotte-Mecklenburg Police Department reports offense and arrest statistics in accordance with standard Uniform Crime Reporting (UCR) guidelines. UCR policy states that any adjustments to previous months can be made on the current month's report:

...In tabulating crime counts, an agency may find that offense totals for past months require adjustments due to developments in the investigation or other handling of the matter. It may be necessary to adjust totals reported to UCR for the past month or prior months. Needed adjustments can be made on the current month's report and do not affect the reliability of the figures in that such adjustments tend to equalize each other from month to month over a period of time.

- *Uniform Crime Reporting Handbook*, FBI, 1984, p. 42-43

We are required to report crime monthly to the UCR program, and we do therefore make an effort to process monthly changes in a timely manner. However, occasionally due to the review and processing required for reclassifying, unfounding or clearing cases, the current month's totals may reflect the processing of a backlog of these changes from previous months.

Clearances include cases cleared by both arrest and exception. An exceptional clearance occurs when the identity and location of an offender have been established through adequate investigation but no arrest will be made due to reasons outside law enforcement (prosecution has been declined by the district attorney or by the victim, offender has died or will not be extradited, etc.). Clearance rates under UCR are calculated by dividing the number of cases cleared during the year by the number of cases reported in the year. The clearances counted each year may thus include clearances of cases reported in previous years.

We do make an effort to present the most accurate information available at the time this report is published. Please notify the Research, Planning, and Analysis office if you have any questions about the data in this report.