



CHARLOTTE

2011 Annexation Process

Public Informational
Meeting

August 5, 2010

WELCOME!



CITY OF CHARLOTTE

Tonight's Agenda

2011 Annexation Public Informational Meeting

1. Welcome & introductions
2. Description: annexation process & qualification
3. Plan for extension of City services
4. 2011 annexation qualifying areas
5. Questions & answers
6. Adjourn



CITY OF CHARLOTTE

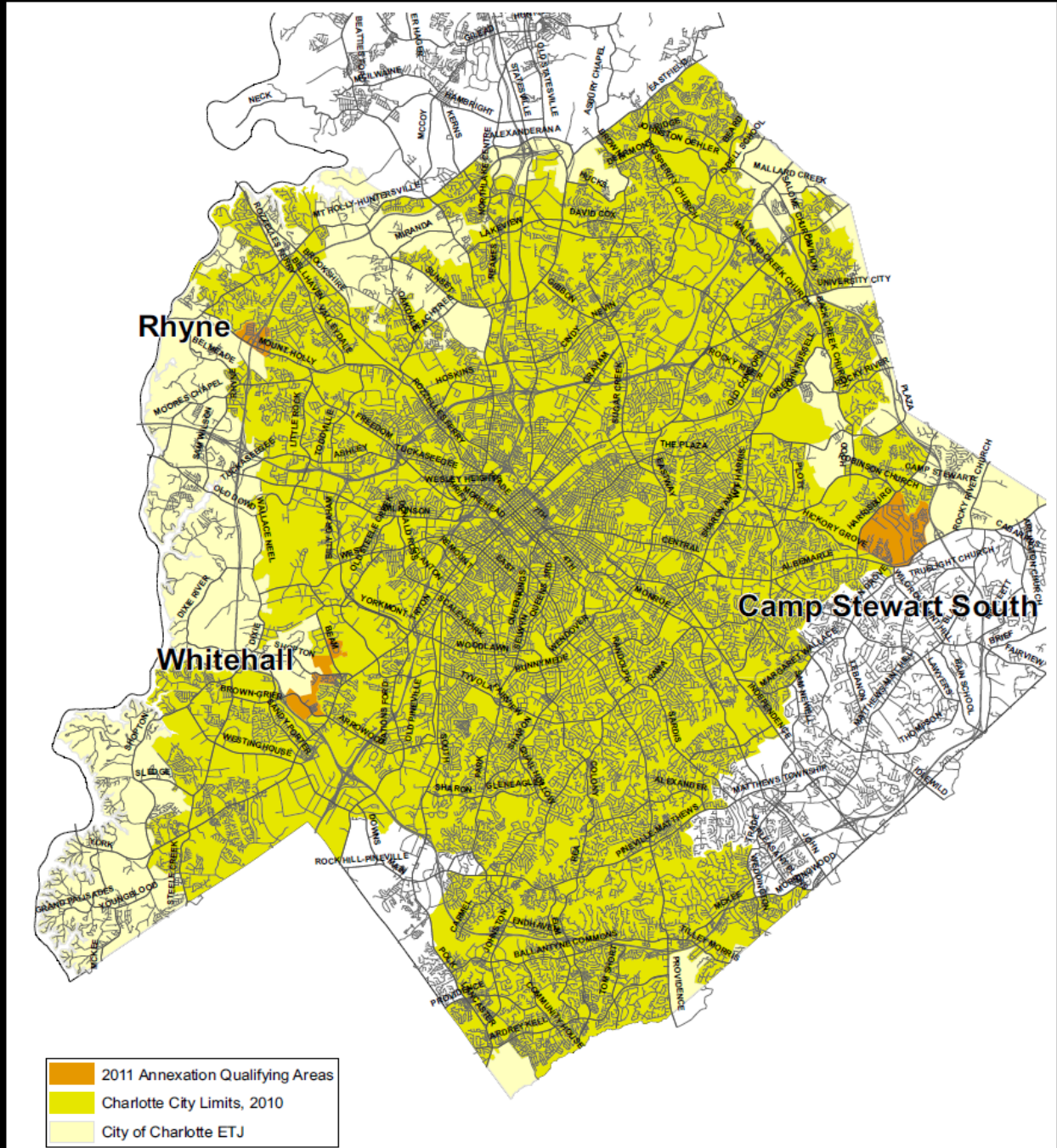
2011 Qualifying Areas:

- Rhyne
- Whitehall
- Camp Stewart South



CITY OF CHARLOTTE

2011 Annexation Qualifying Areas City of Charlotte



Produced by the Charlotte-Mecklenburg Planning Department
Data Source: City of Charlotte, Mecklenburg County



Data current as of February 15, 2010



2011 ANNEXATION PROCESS

Generalized Timetable

June 8, 2009	Resolution of Consideration (study areas) – City Council
Jan.-May '10	Eligibility determination & Service Plan development
June 14, '10	Preliminary Annexation Report, Resolution of Intent & Annexation Reports (City Council)
August 5, '10	Public Informational Mtg.
August 23, '10	Public Hearing (City Council)
Sept.-Oct. '10	City Council deliberations
November '10	Annexation ordinances (City Council)
June 30, 2011	Effective annexation date; services extended



CITY OF CHARLOTTE

2011 ANNEXATION PROCESS

Public Informational Meeting

Key Business Units & Departments Represented:

- Police
- Solid Waste Services
- Fire
- Transportation (CDOT)
- Utilities (CMU)
- CATS
- Engineering & Property Management
- Neighborhood & Business Services



CITY OF CHARLOTTE

2011 ANNEXATION PROCESS

Public Informational Meeting

Administrative support from:

- Planning
- Budget
- City Manager's Office
- City Attorney
- Corporate Communications
- Business Support Services
- Finance
- 311
- County Tax Administrator
- County Tax Collector



2011 ANNEXATION PROCESS

How does an area qualify?

Annexation requirements (must meet all 3):

- Must be contiguous (“next to”) current City boundary
- Must have 1/8 (12.5%) boundary in common with current City boundary
- Cannot already be part of an existing municipality



2011 ANNEXATION PROCESS

How does an area qualify?

Common boundary - at least 12.5 %:

Rhyne 75.1%

Whitehall 71.8%

Camp Stewart South 68.1%



2011 ANNEXATION PROCESS

How does an area qualify?

Standards (must meet one or more):

- **Population:** at least 2.3 persons per acre, or
- **Subdivision:** at least 1 person per acre and
at least 60% acreage of all lots must be in lots 3 acres or less and
at least 65% of number of lots must be 1 acre or less, or
- **Land Use:** at least 60% of lots must be in use (not vacant), and
at least 60% of all residential and vacant lots must be 3 acres or less



2011 ANNEXATION PROCESS

How does an area qualify?

Qualifying standards):

ANNEXATION AREA	2.3 persons/ac.	60% of area in lots <= 3 ac.	65% lots <=1 ac.	60% lots in use	60% residential & vacant lots
Rhyne	2.83				
Whitehall	2.53				
Camp Stewart South	1.96	61.8%	82.6%	67.0%	68.1%



2011 ANNEXATION PROCESS

“Subsection d”:

Limited portion of qualifying area need not meet annexation standards, but:

- Must not exceed 25% of the area of whole annexation area,
and
- Must share at least 60% of its boundary with qualifying part of annexation area and City boundary



2011 ANNEXATION PROCESS

“Subsection d” portion of Areas:

Annexation Area	$\leq 25\%$ of total area	$> 60\%$ of common boundary
Rhyne	24.3%	100%
Whitehall	24.5%	100%
Camp Stewart South	24.8%	100%



CITY OF CHARLOTTE

2011 ANNEXATION PROCESS

Major City services affected by annexation:

Police

Fire

Street Maintenance

Solid Waste

Utilities (Water and Sewer)



2011 ANNEXATION PROCESS

General provisions:

City services extended to areas immediately upon annexation effective date on substantially the same basis and in the same manner provided in the City.

Water, sewer, and fire protection will be provided in compliance with applicable state statutes.

Contract with rural fire department is acceptable method of providing fire protection.

Contract with private solid waste collection firm is acceptable method of providing solid waste collection services.



CITY OF CHARLOTTE

2011 ANNEXATION PROCESS

Plans for Services: Police

Protection of life & property.

Continuous 24-hour basis.

Variety of services -- 911 emergency service, traffic control, computerized information system, community policing, criminal investigations.

Across the City, annexation areas & other portions of the County, services are administered uniformly.



CITY OF CHARLOTTE

2011 ANNEXATION PROCESS

Police service delivery in annexation areas would remain unchanged by annexation.

No additional personnel or equipment required

Shift of funding from the County Law Enforcement Service District tax to the City property tax effective June 30, 2011 (20.46 cents/100)



2011 ANNEXATION PROCESS

Plan for Services: Fire

41 engine companies & 15 ladder companies housed in 41 fire stations.

1,165 full-time employees

Maintains standards consistent with requirements of Insurance Services Office (Insurance rating of “three”).

Commensurate level of fire protection will be provided by existing facilities.

Contract with VFD may be acceptable means of providing fire services



2011 ANNEXATION PROCESS

Annexation Area	Service to be provided by Fire Stations
Rhyne	21, 33
Whitehall	26, 30
Camp Stewart South	23, 40



CITY OF CHARLOTTE

2011 ANNEXATION PROCESS

Plan for Services:

Street Maintenance/Transportation

Maintains qualifying City streets, traffic signals and traffic control equipment.

Provides safe, efficient & balanced transportation system.

Maintains fabricates & installs street name & other traffic signs & markings.

Can accept for maintenance those streets maintained by NCDOT at the time of annexation.

Conducts the City's Sidewalk Program.



CITY OF CHARLOTTE

2011 ANNEXATION PROCESS

Evaluates and can accept for maintenance private streets qualifying for Non-System Residential Street Program.

Authorizes street light installations by Duke Energy and approves take over billing for existing streetlights on public streets.



2011 ANNEXATION PROCESS

Plan for Services: Solid Waste Services

Weekly curbside garbage & yard waste collection services.

Bi-weekly recyclable collection.

Call-in service for collection of bulk items, white goods, tires, and dead animals.

Neighborhood clean-up programs.

Refuse and recyclables collection in multi-family complexes (private service contracts).

Weekly garbage collection for qualified small businesses.



2011 ANNEXATION PROCESS

Plan for Services: Utilities (Water & Sewer)

Operates, maintains, and extends water and sewer facilities.

Provides area with adequate quantities of potable water.

Returns treated wastewater back to streams and rivers.

Operates on revenue generated by sale of water/sewer service.

Construction of water/sewer systems will meet requirements of annexation law

Construction will be completed within two years of effective annexation date.



2011 ANNEXATION PROCESS

Construction of systems will be consistent with Water/Sewer Extension Policy (residential):

- Design & construct water mains for fire protection to within 750 feet of residential properties
- Design & construct gravity sewer mains to low point of public roadways

Will enable properties to access utilities in accordance with extension policies

Annexation plans include preliminary design of utility extensions



CITY OF CHARLOTTE

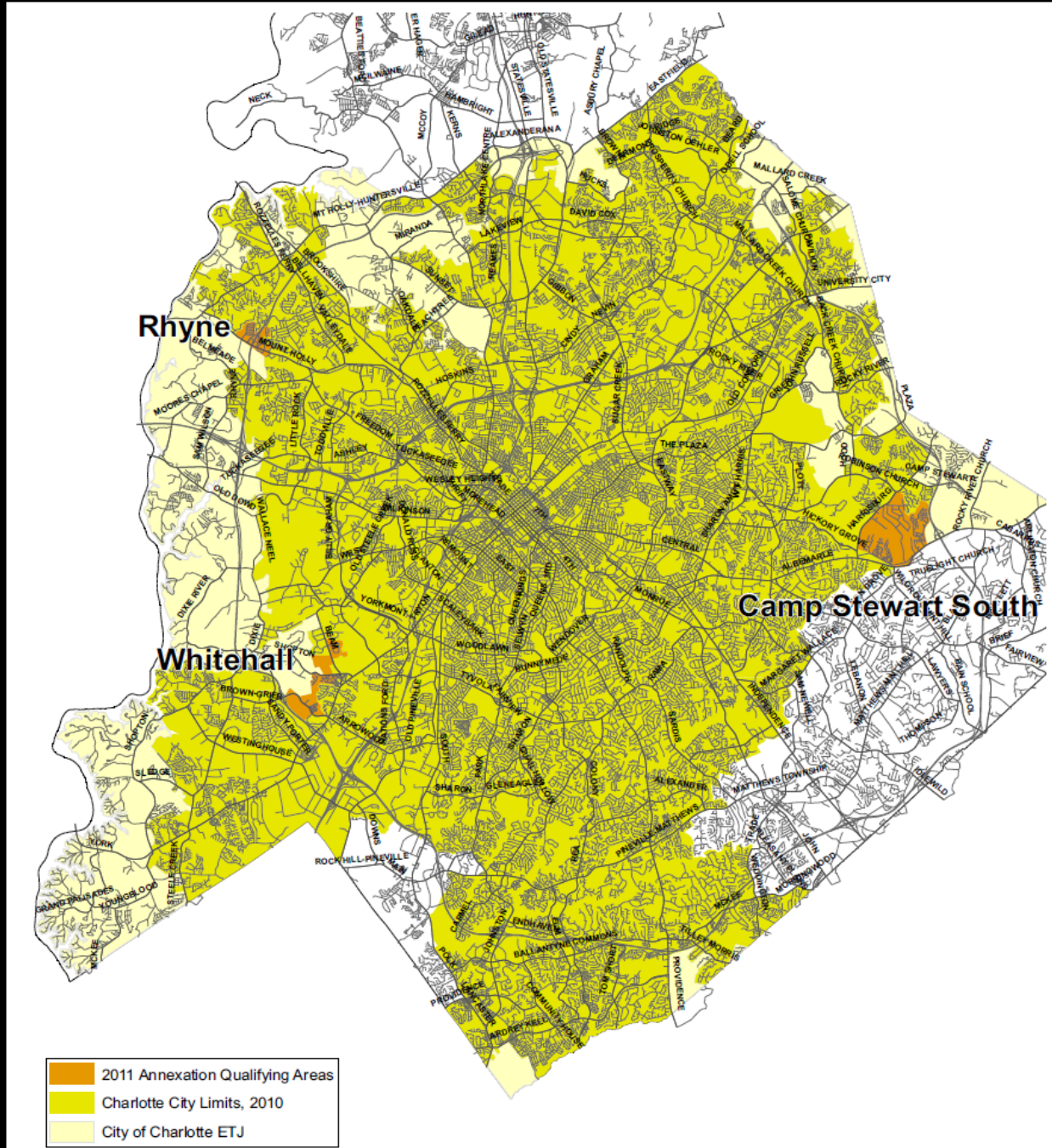
2011 ANNEXATION QUALIFYING AREAS

CHARMECK.ORG



CITY OF CHARLOTTE

2011 Annexation Qualifying Areas City of Charlotte



Produced by the Charlotte-Mecklenburg Planning Department
Data Source: City of Charlotte, Mecklenburg County



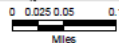
Data current as of February 15, 2010



CITY OF CHARLOTTE

Rhyne

2011 Annexation Qualifying Area



Produced by the Charlotte-Mecklenburg Planning Department
Data Source: City of Charlotte, Mecklenburg County




Data current as of April 9, 2010

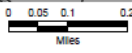


Whitehall

2011 Annexation Qualifying Area



 Annexation Qualifying Area
 City of Charlotte, April 2010
 City of Charlotte ETJ



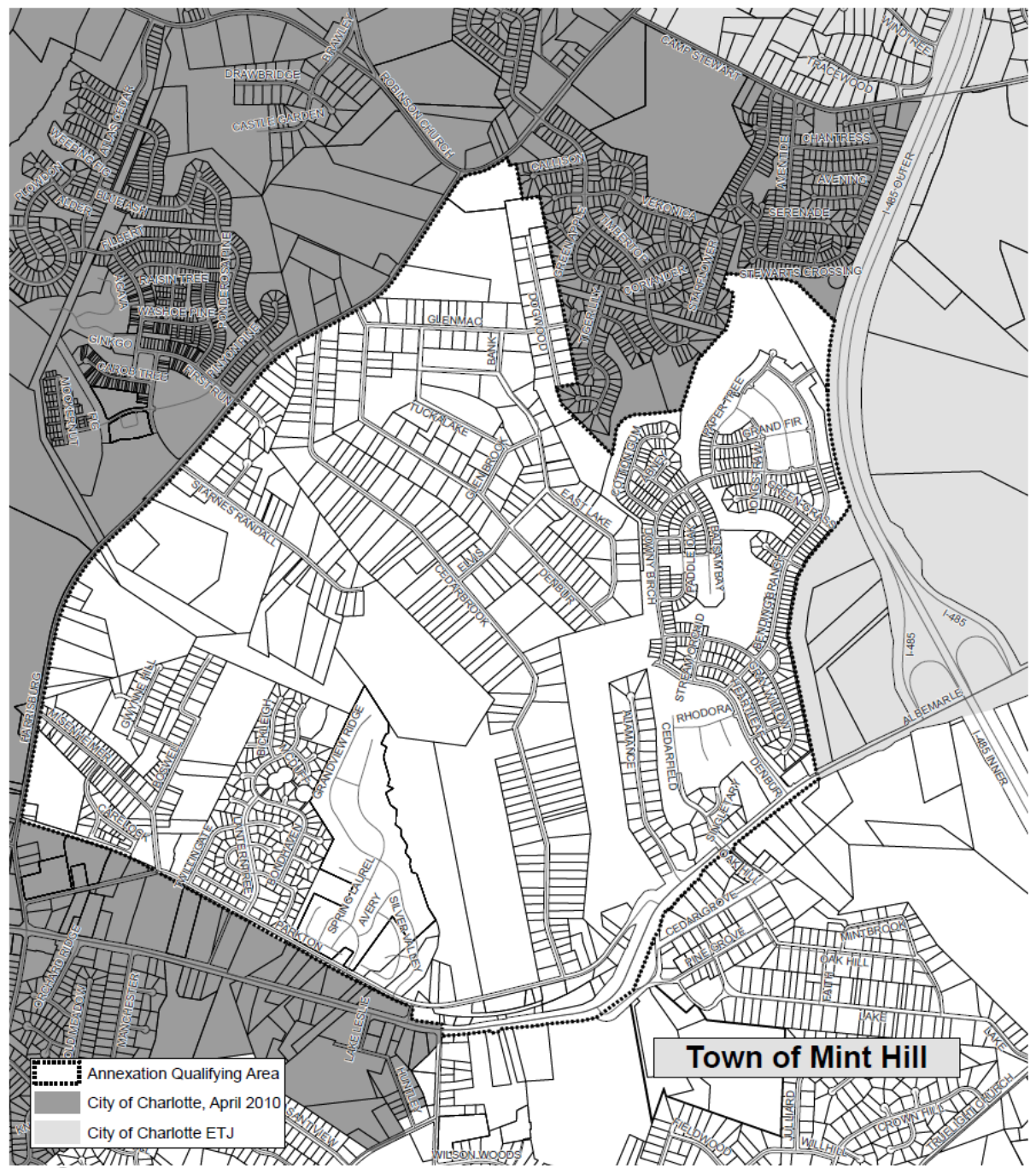
Produced by the Charlotte-Mecklenburg Planning Department
Data Source: City of Charlotte, Mecklenburg County

Data current as of April 9, 2010



CITY OF CHARLOTTE

Camp Stewart South 2011 Annexation Qualifying Area



Produced by the Charlotte-Mecklenburg Planning Department
 Data Source: City of Charlotte, Mecklenburg County

Data current as of April 9, 2010



CITY OF CHARLOTTE

2011 ANNEXATION PROCESS

Annexation public hearing:
August 23, 2010 - 7:00 P.M.

City Clerk telephone: 704-336-2248

City/County Website:

www.charmeck.org

Planning Department Website:

www.charlotteplanning.org



CITY OF CHARLOTTE

2011 ANNEXATION PROCESS



- Rhyne
- Whitehall
- Camp Stewart South



Reminders:

- **Please drive safely**
- **Leave building via.
basement**
- **No charge for
parking**