

operated along with the Pioneer mine at McCormick, S. C. and the Latimer mine in Wilkes County, N. C. The organization that managed the three mines was the Pioneer Mining Company and Carolina Exploration Company under the leadership of its president and main stock holder, W. A. White. White was a native of San Francisco. When he came to Charlotte he already had some 25 years experience as a mining engineer "in various portions of the world".²¹¹

Actual operations of the Rudisill mine were under the direction of Joseph Brown, general superintendent (figure 30). Other mine personnel were: T. Fred Challis, mining engineer and metallurgist (figure 31); E. S. Titus, electrical engineer (figure 31); D. R. Morgan, mechanical engineer (figure 31); L. A. Swaney, chief timberman and mine carpenter; Leroy Brown, mine foreman; and Varney Slayton, machine foreman.²¹² Mr. Charlie Lyon, who now works for the H. and S. Lumber Company, worked for four years as a miner at the Rudisill during the 1930's and remembers the chief cook, Ernest Pullen.*

The company office was located at 1515 Cliffwood Place (figure 32). The building is now occupied by Quality Products and Machine Company, Inc. Directly behind the office was the company bunk house and mess hall.

As was always a problem with the Rudisill mine, it was necessary to pump water a considerable length of time before any mining could be done and to keep the pumps running all the time mining activities were being carried on.²¹³ The mine was drained to a point somewhat below the 250 foot level and two hydraulic pumps running 24 hours a day were necessary to keep it drained.²¹⁴ Operations at this time

*Lyon, Personal communication, July, 1978.

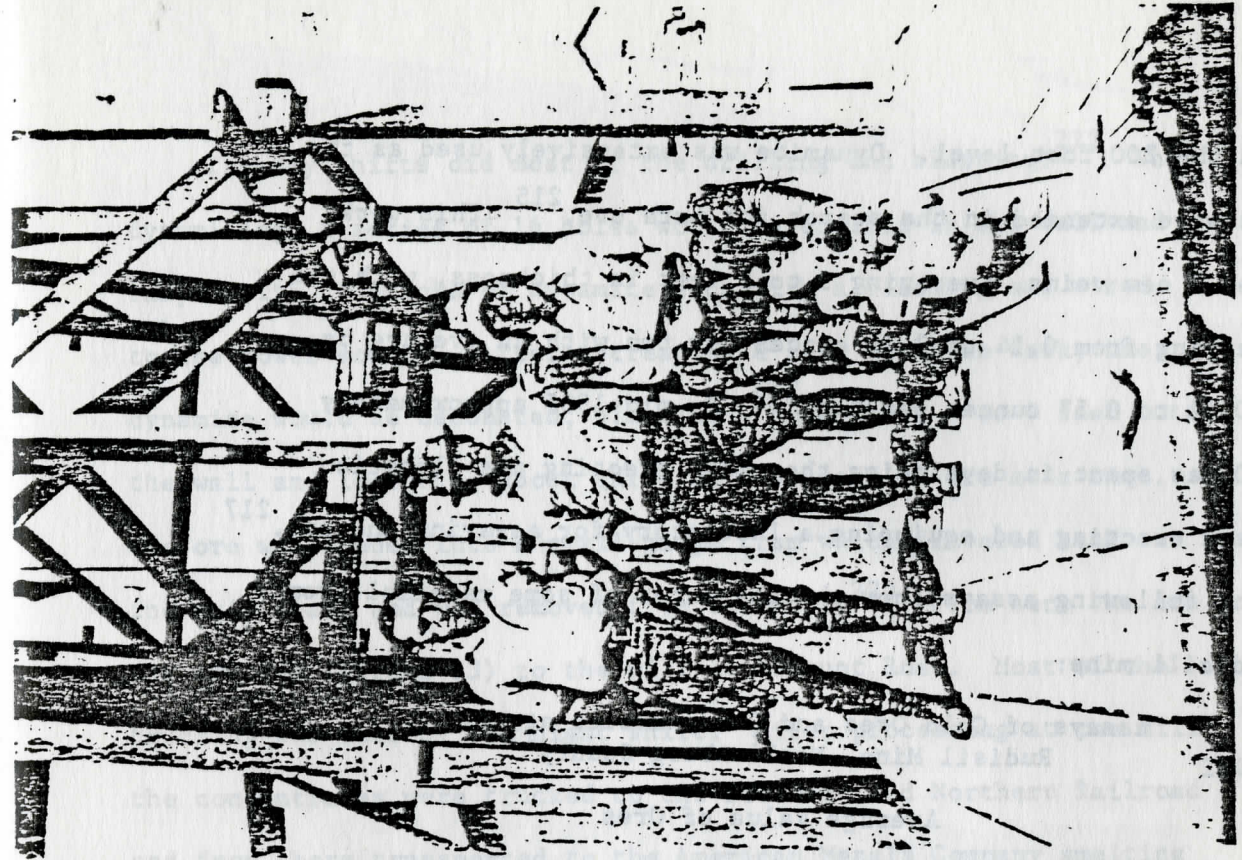


Figure 31. Rudisill Mine Officials in the 1930's, left to right: Fred Challis, Mining Engineer; E. S. Titus, Electrical Engineer; D. R. Morgan, Mechanical Engineer. (photo courtesy Fred Challis, Chattanooga, TN)

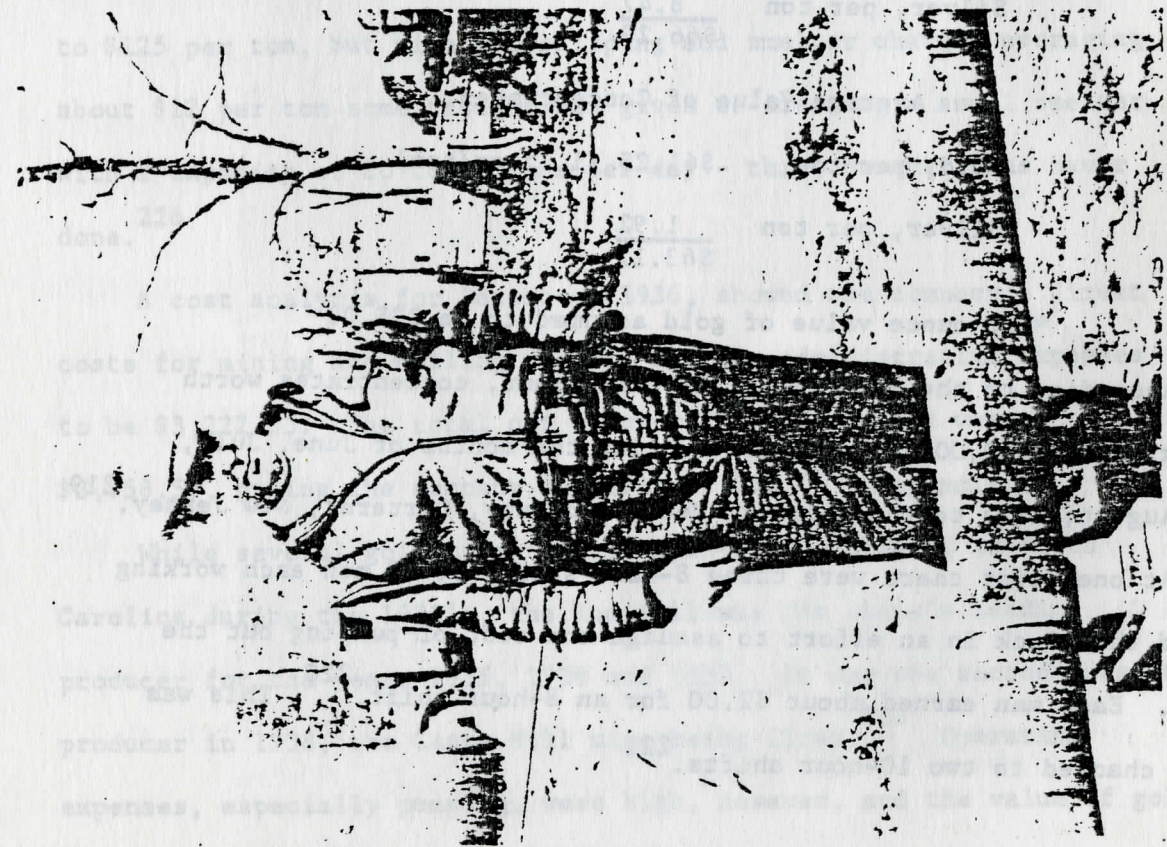


Figure 30. Joseph Brown, General Superintendent of the Rudisill Mine During its Last Operation in the 1930's. (photo courtesy Fred Challis, Chattanooga, TN)