

Figure 27. Stock Certificate of the Gold Hill Copper Company Bearing Signature of Walter George Newman.

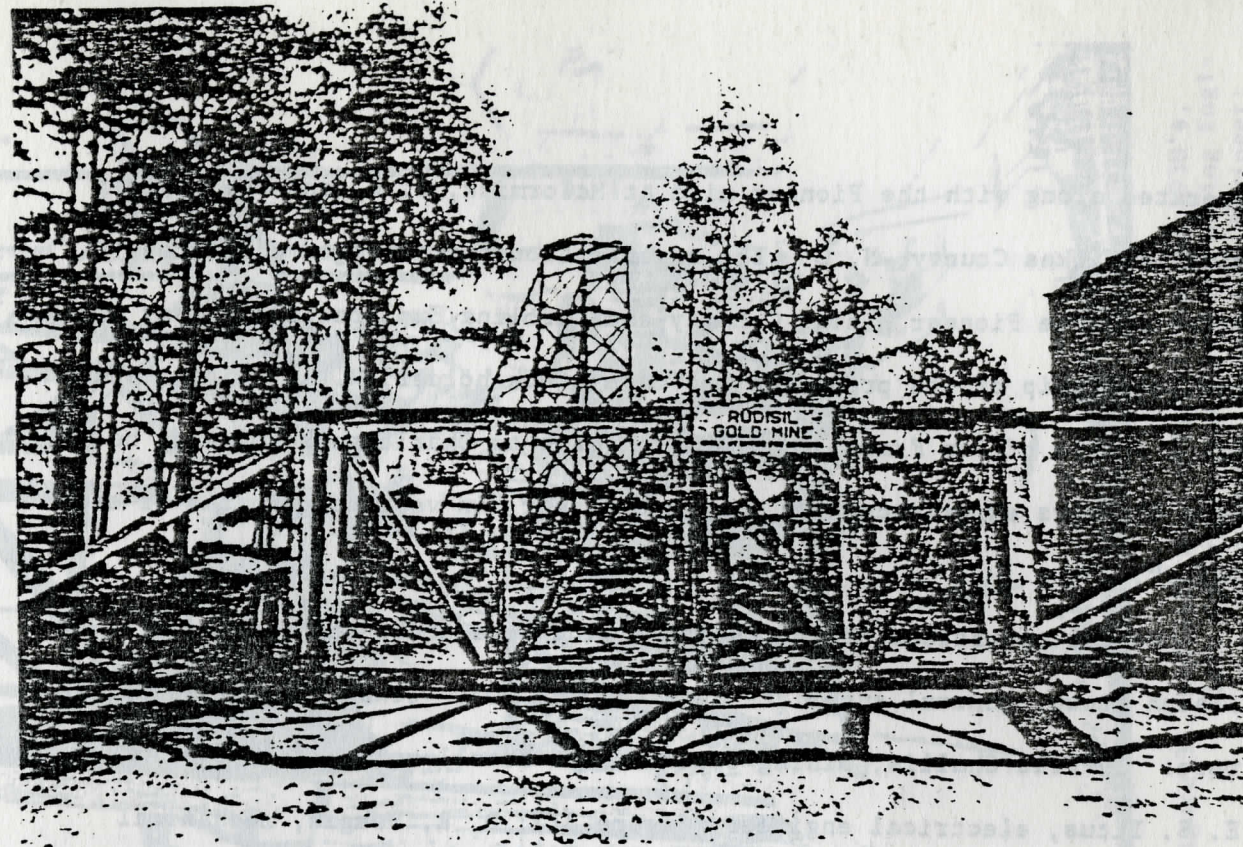


Figure 28. Rudisill Mine Shaft Head Frame, 1930's. (photograph courtesy Fred Challis, Chattanooga, TN)

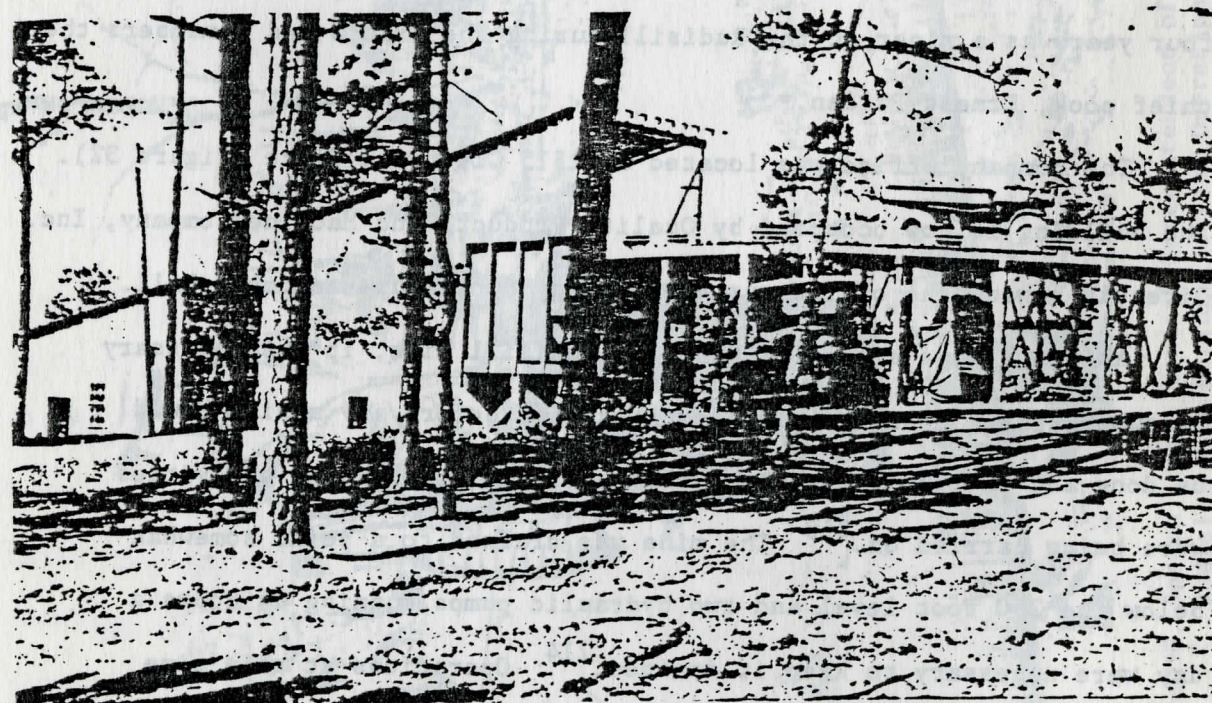


Figure 29. The 1935 Flotation Mill for the Rudisill Mine was Located on Remount Road, Charlotte, N. C. (photograph courtesy Fred Challis, Chattanooga, TN)