

Belmont Gateways Project

Construction will soon begin on the Belmont Gateways Project. The construction contract was awarded by City Council on April 25, 2011.

The Belmont Gateways project will make a number of improvements at the intersections of North Davidson Street at Parkwood Avenue and Hawthorne Lane at Parkwood Avenue to establish a graphic and visual identity to both motorists and pedestrians, and provide a safe pedestrian-friendly environment.

Infrastructure improvements will include construction of curb and gutter, sidewalk, wheel chair ramps, pedestrian signals, crosswalks and brick entry monuments.

All work will be performed within the right-of-way and acquired construction easements.

Construction will be complete by the end of December 2011.

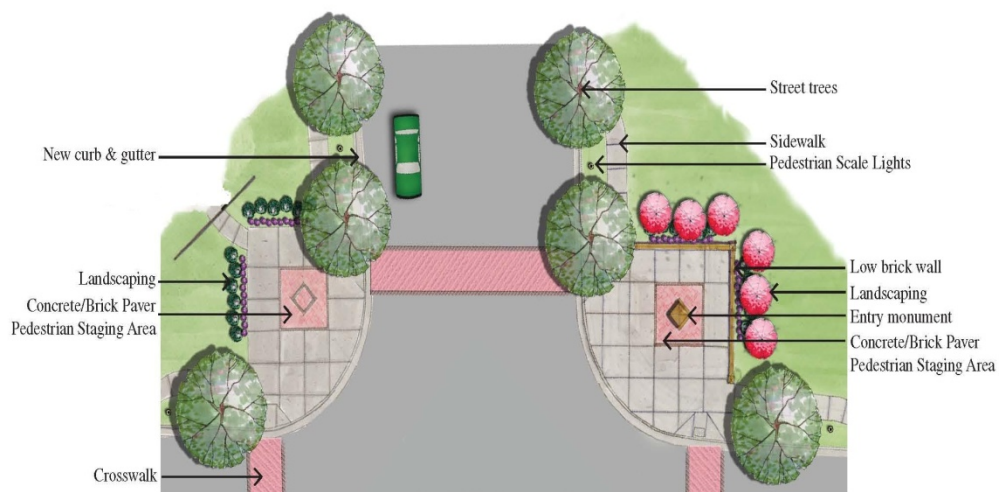
The contractor along with the City's Engineering & Property Management Department will make every effort to minimize inconveniences to you during construction.

For more information on this project, please contact Leslie Bing, Engineering & Property Management Project Manager, 704-336-7277, lbings@charlottenc.gov

The improvements will tie together common themes of enhanced pedestrian access and neighborhood identification that consists of:

- Hardscape including sidewalk, curb and gutter, concrete pavers, etc.
- Pedestrian improvements including wheelchair ramps, pedestrian signals, crosswalks, etc.
- Landscaping consisting of flowering trees, low shrubs, and seasonal flowers
- Entry monuments

The picture below represents one side of the street improvements at Parkwood Avenue and North Davidson Street.



The following picture represents the entry monuments that will be constructed at North Davidson Street at Parkwood Avenue and Hawthorne Lane at Parkwood Avenue.



The following picture represents the public art that will be mounted on the entry monuments at North Davidson Street at Parkwood Avenue and Hawthorne Lane at Parkwood Avenue. The public art is carved brick depicting architectural structures in Belmont and is to be placed on the sides of each column.

**Belmont Neighborhood Redevelopment
Public Art**

Artist: Charles Partin
Media: Carved Brick
Status: Fabrication
Reliefs of historic bungalow & mill architecture

