

The 26th Judicial District of North Carolina

# Annual Statistical

# Report

FY2010-2011

A PUBLICATION OF THE TRIAL COURT ADMINISTRATOR'S OFFICE



## Superior Court

<b>Table 1</b>	Civil Caseload Inventory-Change in Pending Number & Percent; <b>Chart 1</b> Civil Pending Inventory	...5
<b>Table 2</b>	Civil Caseload Inventory-Disposed Cases as a Percent of Filings; End Pending as a Percent of Filings	...6
<b>Table 2a</b>	Civil Caseload Inventory-Estates and Special Proceedings	...6
<b>Table 3</b>	Civil Caseload-Manner of Disposition; <b>Chart 2</b> Civil Manner of Disposition	...7
<b>Table 4</b>	Trend Analysis-Number & Percent Changes in Filings, Dispositions and Pending Cases 2007-2011 <b>Chart 3</b> Trend Analysis for 2007-2011; Filings, Dispositions and Pending Cases	...8
<b>Table 5</b>	Trend Analysis –Age of Pending Caseload 2007-2011; <b>Chart 4</b> Trend Analysis for 2007-2011; Number of Cases Pending	...9
<b>Table 6</b>	Ranking of TCA Districts by Age of Pending Caseload	...10
<hr/>		
<b>Table 7</b>	Criminal Caseload-Change in Pending Number and Percent	...12
<b>Table 8</b>	Criminal Caseload Inventory-Disposed Cases as a Percent of Filings; End Pending as a Percent of Filings	...12
<b>Table 9</b>	Superior Court Clearance Rate Adjusted for Absconded Defendants	...13
<b>Table 10</b>	Trend Analysis-Number & Percent Changes in Filings, Dispositions, & Pending Cases (Felonies)	...14
<b>Table 11</b>	Trend Analysis-Number & Percent Changes in Filings, Dispositions & Pending Cases (Misdemeanors)	...14
<b>Table 12a</b>	Criminal Age of Pending Caseload (Felonies and Misdemeanors); <b>Chart 5</b> Criminal Age of Pending Caseload in Days (Felonies and Misdemeanors)	...15
<b>Table 12b</b>	Superior Court Criminal (Felonies and Misdemeanors) Disposition Activity	...16

## District Court

<b>Table 13</b>	Civil Caseload Inventory-Change in Pending Number and Percent; <b>Chart 6</b> Civil Pending Inventory	...18
<b>Table 14</b>	Civil Caseload Inventory-Disposed Cases as a Percent of Filings; End Pending as a Percent of Filings	...19
<b>Table 15</b>	Civil Caseload-Manner of Disposition; <b>Chart 7</b> Civil Manner of Disposition	...20
<b>Table 16</b>	Civil Trend Analysis-Number and Percent Changes in Filings, Dispositions and Pending Cases 2007-2011 <b>Chart 8</b> Trend Analysis for 2007-2011 General Civil/CVM Appeals	...21
<b>Table 17</b>	Domestic Relations Trend Analysis– Number & Percent Changes in Filings, Dispositions & Pending Cases 2007-2011; <b>Chart 9</b> Trend Analysis for 2007-2011 Domestic Relations	...22
<b>Table 18</b>	Age of Pending Caseload 2007-2011 - General Civil/CVM Appeals; <b>Chart 10 / Chart 10a</b> Age of District Court Pending Caseload	...23
<b>Table 19</b>	Age of Pending Caseload 2007-2011 - Domestic Relations; <b>Chart 11</b> Age of Pending Domestic Relations Caseload	...24
<b>Table 20A</b>	Ranking of TCA Districts by Age of Pending Caseload-General Civil/CVM Appeals	...25
<b>Table 20B</b>	Ranking of TCA Districts by Age of Pending Caseload-Domestic Relations	...26
<b>Table 20C</b>	Ranking of Family Court Districts by Age of Pending Caseload-Domestic Relations	...26
<b>Table 21</b>	Criminal Caseload Inventory-Change in Pending Number and Percent	...28
<b>Table 22</b>	Criminal Caseload Inventory-Disposed Cases as a Percent of Filings	...28
<b>Table 23</b>	District Court Clearance Rate (Non-Motor Vehicle) Adjusted For Absconded Defendants	...29
<b>Table 24</b>	Criminal Caseload Manner of Disposition; <b>Chart 12</b> Criminal Manner of Disposition	...30
<b>Table 25</b>	Criminal Trend Analysis-Number and Percent Changes in Filings and Dispositions 2007-2011	...31
<b>Chart 13</b>	MeckTraffic Tickets - Number of Visits to Website	...32
<b>Chart 14</b>	Number of Tickets Amended Through MeckTraffic Tickets Website	...33
<b>Chart 15</b>	Country of Origin for Visits to the MeckTraffic Tickets Website	...33
<b>Chart 16</b>	Jury Utilization Comparison of Requested and Unused Panels	...35
<b>Chart 17</b>	Jury Utilization Comparison of Unused Panels Percentage	...35
<b>Chart 18</b>	Mecklenburg County S.T.E.P. Court Programs-Number of Persons Served FY10-11	...37
<b>Chart 19</b>	Mecklenburg County S.T.E.P Court Programs - Retention and Completion Rates	...38

Superior Court  
Civil



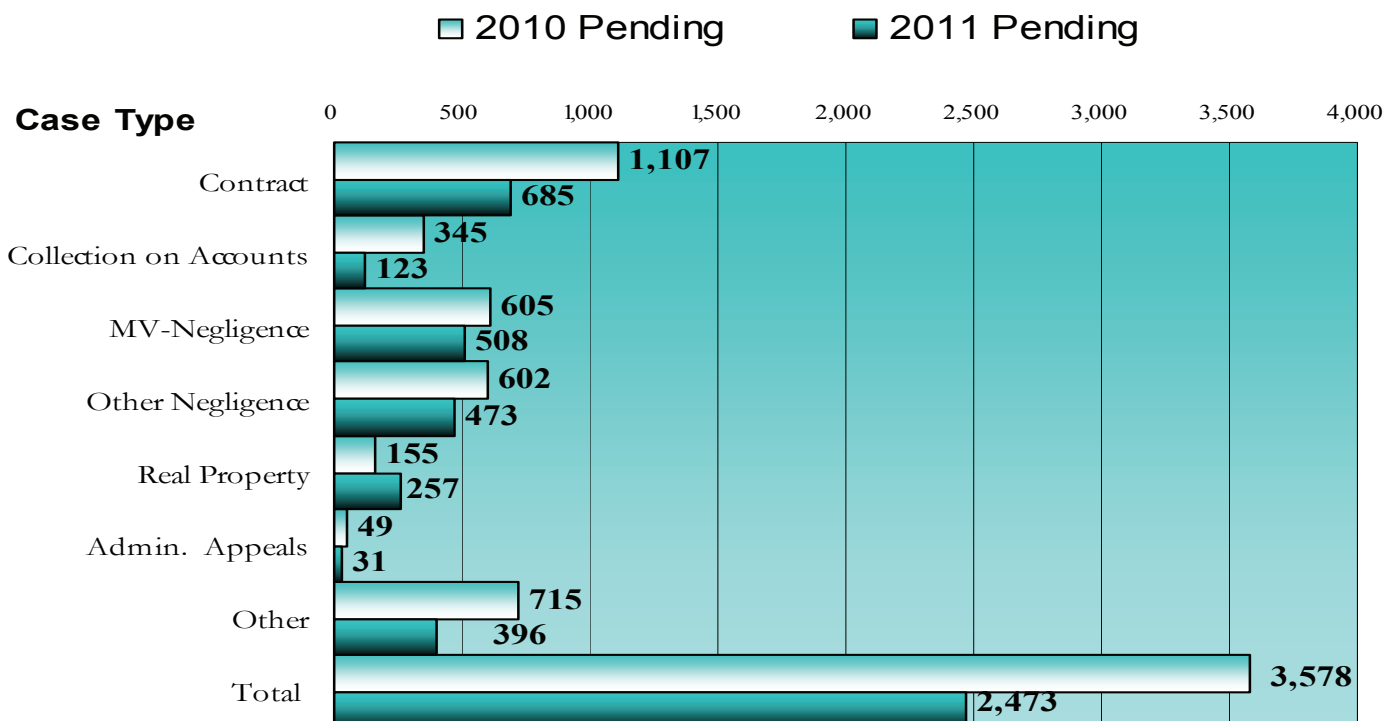
**TABLE 1**  
**Superior Court Civil Caseload Inventory**  
**Change in Pending Number and Percent**

<i>Case Type</i>	<i>Begin</i>	<i>Number</i>	<i>Number</i>	<i>End</i>	<i>Change In Pending</i>	
					<i>Pending</i>	<i>Filed</i>
Contract	1,107	1,084	1,506	685	-422	-38.1%
Collection on Accounts	345	300	522	123	-222	-64.3%
MV-Negligence	605	617	714	508	-97	-16.0%
Other Negligence	602	472	601	473	-129	-21.4%
Real Property	155	237	135	257	102	65.8%
Admin. Appeals	49	54	72	31	-18	-36.7%
Other	715	1,005	1,324	396	-319	-44.6%
Total	3,578 *	3,769	4,874	2,473	-1,105	-30.9%

Table 1 and Chart 1 demonstrates the change in pending cases from the beginning to end of FY 2010-2011 indicates whether the Court is disposing of cases as quickly as they are filed; and if not, at what rate the court is falling behind. For FY 2010-2011, the number of cases disposed exceeded the number of cases filed in all areas except for Real Property. Overall there was a 31% decrease of cases pending at the end of the FY 2010-2011.

\* This number adjusted since publication of FY09-10.

**Chart 1**  
**Superior Court Civil -Pending Inventory**



**TABLE 2**  
**Superior Court Civil Caseload Inventory**  
**Disposed Cases as a Percent of Filings End Pending as a Percent of Filings**

<i>Case Type</i>	<i>Number Filed</i>	<i>Number Disposed</i>	<i>End Pending</i>	<i>Disposed Cases as % of Filings</i>	<i>End Pending Cases as % of Filings</i>
Contract	1,084	1,506	685	138.9%	63.2%
Collection On Accounts	300	522	123	174.0%	41.0%
MV-Negligence	617	714	508	115.7%	82.3%
Other Negligence	472	601	473	127.3%	100.2%
Real Property	237	135	257	57.0%	108.4%
Admin. Appeal	54	72	31	133.3%	57.4%
Other	1,005	1,324	396	131.7%	39.4%
Total Superior Court Caseload	3,769	4,874	2,473	129.3%	65.6%

*Another method of determining how well the Superior Court is managing its caseload is by studying the number of disposed cases as a percentage of filings and the number of pending cases as a percentage of filings. The Court is managing its caseload effectively if disposed cases comprise a large percentage of filings and if pending cases comprise a low percentage of filings.*

*For 2010-11, the district's disposed cases comprised 129.3% of filings and pending cases comprised 65.6%. This is an improvement over FY 09-10 when disposed cases comprised 100.6% of filings and pending made up 60.5%.*

**Table 2a**  
**Superior Court Civil - Estates and Special Proceedings Caseload Inventory**  
**Disposed Cases as a Percent of Filings End Pending as a Percent of Filings**

<i>Case Type</i>	<i>Number Filed</i>	<i>Number Disposed</i>	<i>End Pending</i>	<i>Disposed Cases as % of Filings</i>	<i>End Pending Cases as % of Filings</i>
Estates	4,023	4,161	3,358	103.4%	83.5%
Special Proceedings	11,335	10,140	7,804	89.5%	68.8%
Total Superior Court Caseload	15,358	14,301	11,162	93.1%	72.7%

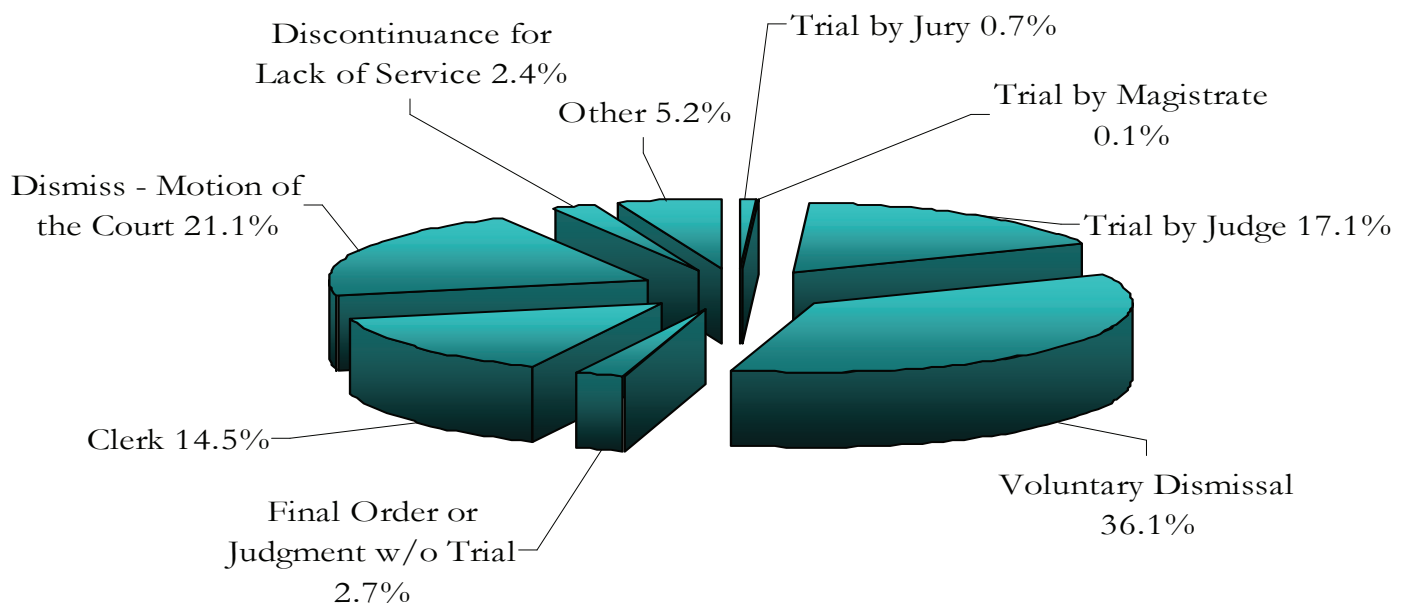
*In Table 2a, 93.1% of cases filed were disposed.*

**TABLE 3**  
**Superior Court Civil Caseload**  
**Manner of Disposition**

<i>Disposition Method</i>	<i>Number Disposed</i>	<i>Percentage Disposed</i>
Trial by Jury	36	0.7%
Trial by Magistrate	4	0.1%
Trial by Judge	834	17.1%
Voluntary Dismissal	1,761	36.1%
Final Order or Judgment w/o Trial	132	2.7%
Clerk	707	14.5%
Dismiss - Motion of the Court	1,029	21.1%
Discontinuance for Lack of Service	117	2.4%
Other	254	5.2%
Total	4,874	100.0%

Table 3 shows the manner in which the Superior Court's civil cases were disposed.

**Chart 2**  
**Superior Court Civil - Manner of Disposition**

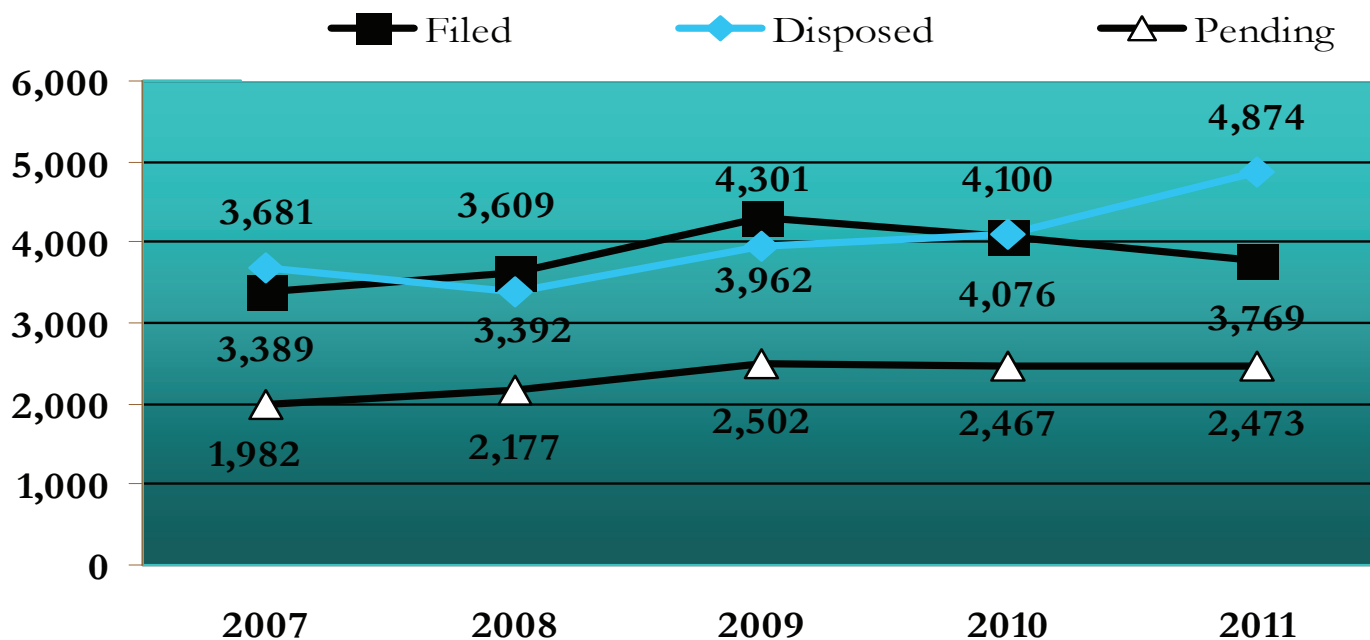


**TABLE 4**  
**Superior Court Civil Trend Analysis**  
**Number & Percent Changes in Filings, Dispositions, & Pending Cases**

	<i>Cases Filed</i>		<i>Disposed</i>		<i>Pending</i>	
	<i>#</i>	<i>%</i>	<i>#</i>	<i>%</i>	<i>#</i>	<i>%</i>
2007	3,389	-	3,681	-	1,982	-
2008	3,609	6.5	3,392	-7.9	2,177	9.8
2009	4,301	19.2	3,962	16.8	2,502	14.9
2010	4,076	-5.2	4,100	3.5	2,467	-1.4
2011	3,769	-7.5	4,874	18.9	2,473	0.2
2007-11	19,144	11.2	20,009	32.4	11,601	24.8

*In order for the court to maintain effective case management, it must dispose of cases at least at the same rate as cases are being filed. The number of Superior Court cases filed in the 26th Judicial District decreased in FY 2010-2011 compared to FY 2009-2010. The number of cases disposed in FY 2010-2011 significantly increased.*

**Chart 3**  
**Superior Court Civil Trend Analysis**





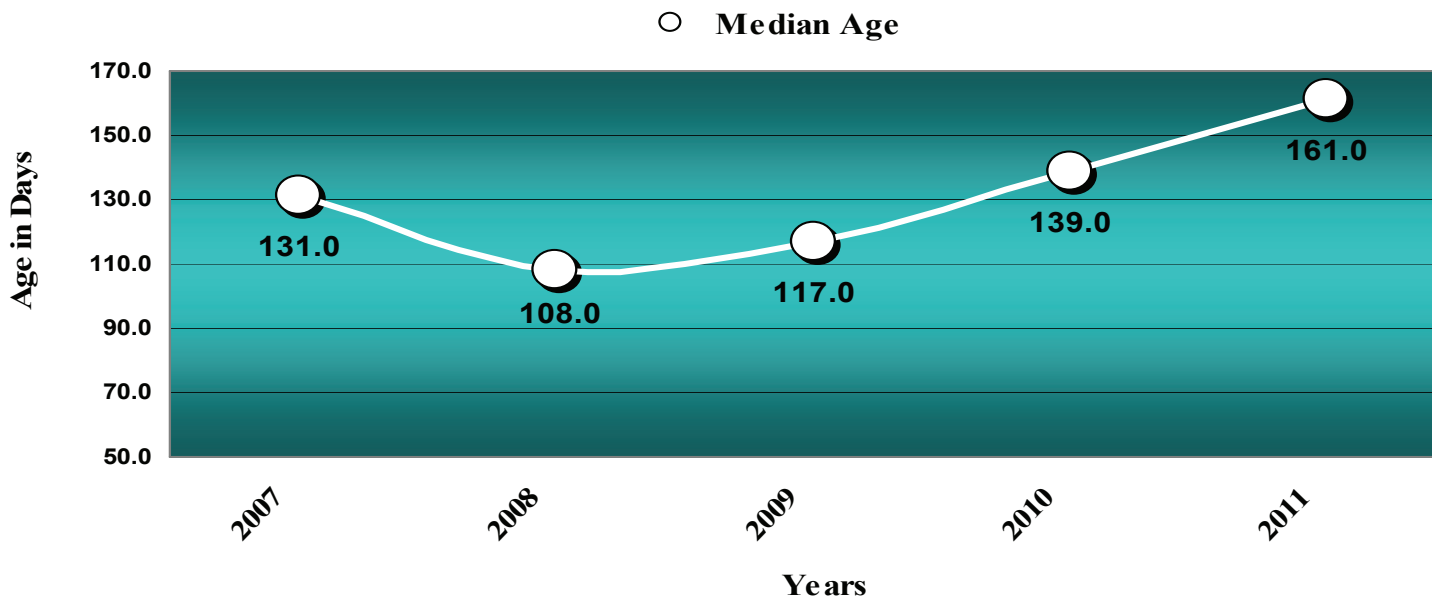
**TABLE 5**  
**Superior Court Civil Trend Analysis**  
**Age of Pending Caseload**

<i>Year</i>	<i>Total Pending</i> #	<i>&lt; 1 Year</i>		<i>1 - 2 Years</i>		<i>&gt; 2 Years</i>		<i>In Days Median Age</i>
		#	%	#	%	#	%	
<i>2007</i>	1,982	1,714	86.5	220	11.1	48	2.4	131.0
<i>2008</i>	2,177	1,956	89.8	23	1.1	23	1.1	108.0
<i>2009</i>	2,502	2,229	89.1	231	9.2	42	1.7	117.0
<i>2010</i>	2467	2109	85.5	309	12.5	49	2.0	139.0
<i>2011</i>	2,473	2,027	82.0	334	13.5	112	4.5	161.0

According to American Bar Association (ABA) standards, 90% of all civil cases should be settled, tried or otherwise concluded within twelve months of the date of filing, 98% within eighteen months of filing, and the remainder within two years of filing.

For FY 2010-2011, the 26th Judicial District experienced an increase in the number of cases pending at the two year mark. The median ages of cases also experienced a corresponding increase.

**Chart 4**  
**Superior Court Civil Trend Analysis**  
**Age of Pending Caseload**



**TABLE 6**  
**Superior Court Civil Ranking of Trial Court Administrator Districts**  
**By Age of Pending Caseload**

TCA District	Total Pending	TCA District	< 1 Year		TCA District		1 - 2 Years		TCA District		> 2 Years		TCA District	Median Age In Days
			#	%	District	#	%	District	#	%	District	#		
7A	161	29B	242	50%	18	74	7%	12	4	1%	12	122		
29A	182	10	1,812	63%	12	29	8%	7A	7	4%	7B	126		
4A	207	27A	250	68%	7A	15	9%	7B	10	4%	18	128		
7B	283	14	412	69%	7B	33	12%	4B	15	5%	7A	154		
4B	291	29A	127	70%	21	81	12%	18	52	5%	<b>26</b>	<b>161</b>		
27A	366	28	463	71%	<b>26</b>	<b>334</b>	<b>14%</b>	<b>26</b>	<b>112</b>	<b>5%</b>	4B	169		
12	377	4A	151	73%	4A	34	16%	5	44	6%	5	177		
3B	411	3B	302	73%	3B	69	17%	21	56	8%	21	190		
29B	485	4B	218	75%	27A	66	18%	3B	40	10%	3B	203		
14	601	5	574	75%	14	110	18%	4A	22	11%	4A	209		
28	654	21	549	80%	29A	34	19%	28	69	11%	27A	210		
21	686	<b>26</b>	<b>2,027</b>	<b>82%</b>	28	122	19%	29A	21	12%	28	219		
5	766	7B	240	85%	5	148	19%	14	79	13%	14	232		
18	1,069	7A	139	86%	4B	58	20%	27A	50	14%	29A	253		
<b>26</b>	<b>2,473</b>	18	943	88%	29B	113	23%	10	417	14%	10	267		
10	2,899	12	344	91%	10	670	23%	29B	130	27%	29B	366		

Table 6 reveals the ranking of Trial Court Administrator Districts throughout the state by age of pending caseload. The 26th Judicial District ranked 6th of 16 districts in FY 2010-2011 for percentage of cases over two years old and 5th for the median age of cases.



Superior Court  
Criminal



**TABLE 7**  
**Superior Court Criminal Caseload Inventory**  
**Change in Pending Number and Percent**

<i>Case Type</i>	<i>Begin Pending</i>	<i>Number Filed</i>	<i>Number Disposed</i>	<i>End Pending</i>	<i>Change In Pending Number</i>	<i>Percent</i>
<i>Felonies</i>	9,812*	9,805	12,404	7,213	-2,599	-26.5
<i>Misdemeanors</i>	3,056*	4,206	4,241	3,021	-35	-1.1

*The change in the number of pending cases from the beginning to the end of the fiscal year indicates whether the Court is disposing of cases as quickly as they are filed; and if not, at what rate the Court is falling behind. In FY 2010-2011, there was a reduction of 2,599 felony cases and 35 misdemeanor case pending at the end of the year. \* This number adjusted since publication of the FY09-10 annual statistical report.*

**TABLE 8**  
**Superior Court Criminal Caseload Inventory**  
**Disposed Cases as a Percent of Filings**

<i>Case Type</i>	<i>Number Filed</i>	<i>Number Disposed</i>	<i>End Pending</i>	<i>Disposed Cases as a % of Filings</i>	<i>End Pending Cases as a % of Filings</i>
<i>Felonies</i>	9,805	12,404	7,213	126.5	73.6
<i>Misdemeanors</i>	4,206	4,241	3,021	100.8	71.8

*Another method of determining how well the Court is managing its caseload is by studying the number of cases disposed and the number of cases pending as percentages of the number of cases filed. The National Center for State Courts recommends a benchmark in which the number of cases disposed should equal at least 90% of the cases filed. The Table above indicates the court exceeded this benchmark in FY2010-2011 with 125.5% of felonies and 100.8% of misdemeanors disposed.*

**TABLE 9**  
**Criminal Clearance Rate**

<i>Year</i>	<i>Dispositions</i>	<i>New Filings</i>	<i>Clearance Rate as %</i>
<i>2007</i>	12,259	13,181	93%
<i>2008</i>	14,887	13,856	107%
<i>2009</i>	14,988	14,243	105%
<i>2010</i>	13,673	14,277	96%
<i>2011</i>	16,645	14,011	119%
<i>2007-2011</i>	72,452	69,568	104%

*A clearance rate is the number of dispositions compared with the number of filings. This table reflects the clearance rate of Superior Court cases adjusted for defendant's failure to appear.*



**TABLE 10**  
**Superior Court Criminal Trend Analysis**  
**Number & Percent Changes in Filings, Dispositions, & Pending Cases (Felonies)**

	<i>Filings</i>		<i>Dispositions</i>		<i>Pending</i>	
	<i>#</i>	<i>% Chg.</i>	<i>#</i>	<i>% Chg.</i>	<i>#</i>	<i>% Chg.</i>
<i>07</i>	8,854	-	8,263	-	8,310	-
<i>08</i>	9,553	7.9	10,033	21.4	7,795	-6.2
<i>09</i>	10,077	5.5	10,630	6.0	7,188	-7.8
<i>10</i>	10,041	-0.4	9,750	-8.3	7,423	3.3
<i>11</i>	9,805	-2.4	12,404	27.2	7,213	-2.8
<i>07-11</i>	48,330	10.7	51,080	50.1	37,929	-13.2

**TABLE 11**  
**Superior Court Criminal Trend Analysis**  
**Number & Percent Changes in Filings, Dispositions, & Pending Cases (Misdemeanors)**

	<i>Filings</i>		<i>Dispositions</i>		<i>Pending</i>	
	<i>#</i>	<i>% Chg.</i>	<i>#</i>	<i>% Chg.</i>	<i>#</i>	<i>% Chg.</i>
<i>07</i>	4,327	-	3,996	-	3,630	-
<i>08</i>	4,303	-0.6	4,854	21.5	3,032	-16.5
<i>09</i>	4,166	-3.2	4,358	-10.2	2,805	-7.5
<i>10</i>	4,236	1.7	3,923	-10.0	3,082	9.9
<i>11</i>	4,206	-0.7	4,241	8.1	3,021	-2.0
<i>07-11</i>	21,238	-2.8	21,372	6.1	15,570	-16.8

*The number of cases disposed should keep pace with the number of cases filed.*

**TABLE 12a**  
**Superior Court Criminal Felonies & Misdemeanors**  
**Age of Pending Caseload**

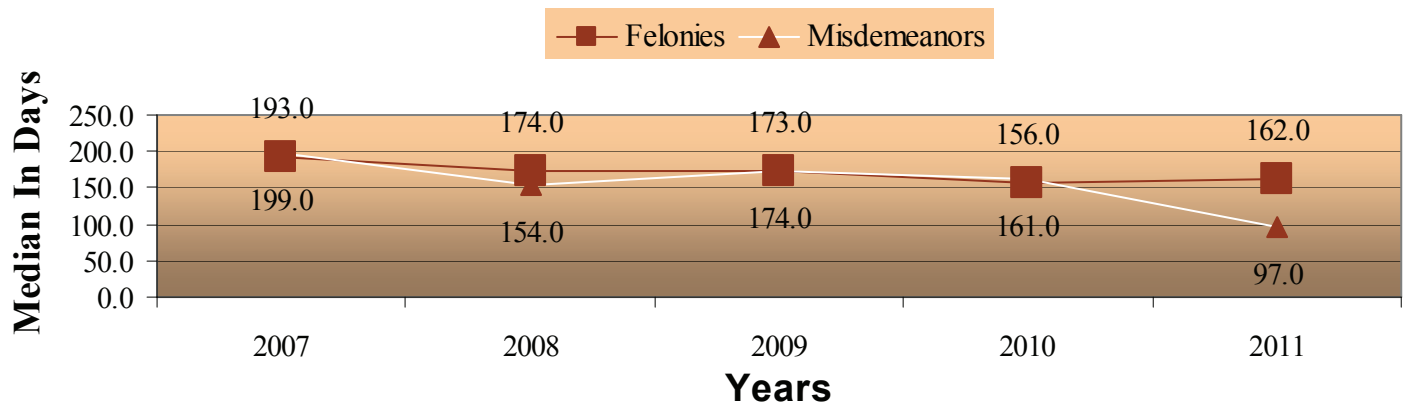
	Total Pending #	< 90 days		91-120 Days		121-180 Days		181-365 Days		1-2 Years		Over 2 Years	
		#	%	#	%	#	%	#	%	#	%	#	%
<b>2007</b>	11,940	3,220	27.0	962	8.1	1,615	13.5	2,805	23.5	2,302	19.3	459	3.8
<b>2008</b>	10,827	3,203	29.6	867	8.0	1,729	16.0	2,756	25.5	1,547	14.3	725	6.7
<b>2009</b>	9,993	2,878	28.8	919	9.2	1,376	13.8	3,036	30.4	1,431	14.3	353	3.5
<b>2010</b>	10,505	3,471	33.0	970	9.2	1,291	12.3	2,487	23.7	1,914	18.2	373	3.6
<b>2011</b>	10,234	3,228	30.7	857	8.2	1,263	12.0	2,100	20.0	1,965	18.7	821	7.8

*The percentage of cases older than 2 years in age has increased by 7.8% over the last year.*

*The Supreme Court adopted standards which guide and are as follows:*

<b>Felonies</b>	<b>Non-Motor Vehicle Misdemeanors</b>	<b>Motor Vehicle Misdemeanors</b>
<i>50% disposed within 120 days of indictment</i>	<i>75% disposed within 60 days of filing</i>	<i>75% disposed within 30 days of the first court appearance</i>
<i>75% disposed within 180 days of indictment</i>	<i>90% disposed within 90 days of filing</i>	<i>90% disposed within 90 days of the first court appearance</i>
<i>90% disposed within 365 days of indictment</i>	<i>98% disposed within 120 days of filing</i>	<i>100% disposed within 150 days of the first court appearance</i>
<i>100% disposed within 545 days of indictment</i>	<i>100% disposed within 365 days of filing</i>	

**Chart 5**  
**Superior Court Criminal Felonies & Misdemeanors**  
**Age of Pending Caseload in days**



**TABLE 12b**  
**Superior Court Criminal Felonies & Misdemeanors**  
**Disposition Activity**

**FELONIES**

	<b>Total Number of</b>		<b>Jury Trial</b>			<b>Guilty Plea</b>		<b>DA Dismissal</b>				
	<i>Filings</i>	<i>Disposed</i>	<i>Guilty</i>	<i>Not Guilty</i>	<i>Guilty Plea before verdict</i>	<i>Lesser Offense</i>	<i>As Charged</i>	<i>After Def. Prosc</i>	<i>With Leave</i>	<i>W/o Leave</i>	<i>Other</i>	<i>Neg. Plea</i>
<b>2007</b>	8,854	8,263	109	38	4	668	3,476	10	94	3,821	43	0
<b>2008</b>	9,553	10,033	141	82	2	587	3,652	49	288	5,189	43	0
<b>2009</b>	10,077	10,630	154	63	1	498	4,031	37	318	5,488	40	0
<b>2010</b>	10,041	9,750	147	75	3	562	3,731	24	204	4,963	41	0
<b>2011</b>	9,805	12,404	195	86	0	869	5,316	23	132	5,250	533	0

**MISDEMEANORS**

	<b>Total Number of</b>		<b>Jury Trial</b>			<b>Guilty Plea</b>		<b>DA Dismissal</b>				
	<i>Filings</i>	<i>Disposed</i>	<i>Guilty</i>	<i>Not Guilty</i>	<i>Guilty Plea before verdict</i>	<i>Lesser Offense</i>	<i>As Charged</i>	<i>After Def. Prosc</i>	<i>With Leave</i>	<i>W/o Leave</i>	<i>Other</i>	<i>Neg. Plea</i>
<b>2007</b>	13,181	12,259	166	59	9	683	4,344	11	167	5,975	845	1
<b>2008</b>	4,303	4,854	61	33	0	13	848	10	115	3,065	709	0
<b>2009</b>	4,166	4,358	96	47	0	6	669	6	126	2,783	625	0
<b>2010</b>	4,236	3,923	52	29	0	3	466	2	107	2,629	635	0
<b>2011</b>	3,304	3,520	31	13	0	5	519	11	41	2,640	365	0

Table 12c demonstrates the manner of disposition in felony and misdemeanor cases over the last five year period.





District Court  
Civil

---

---



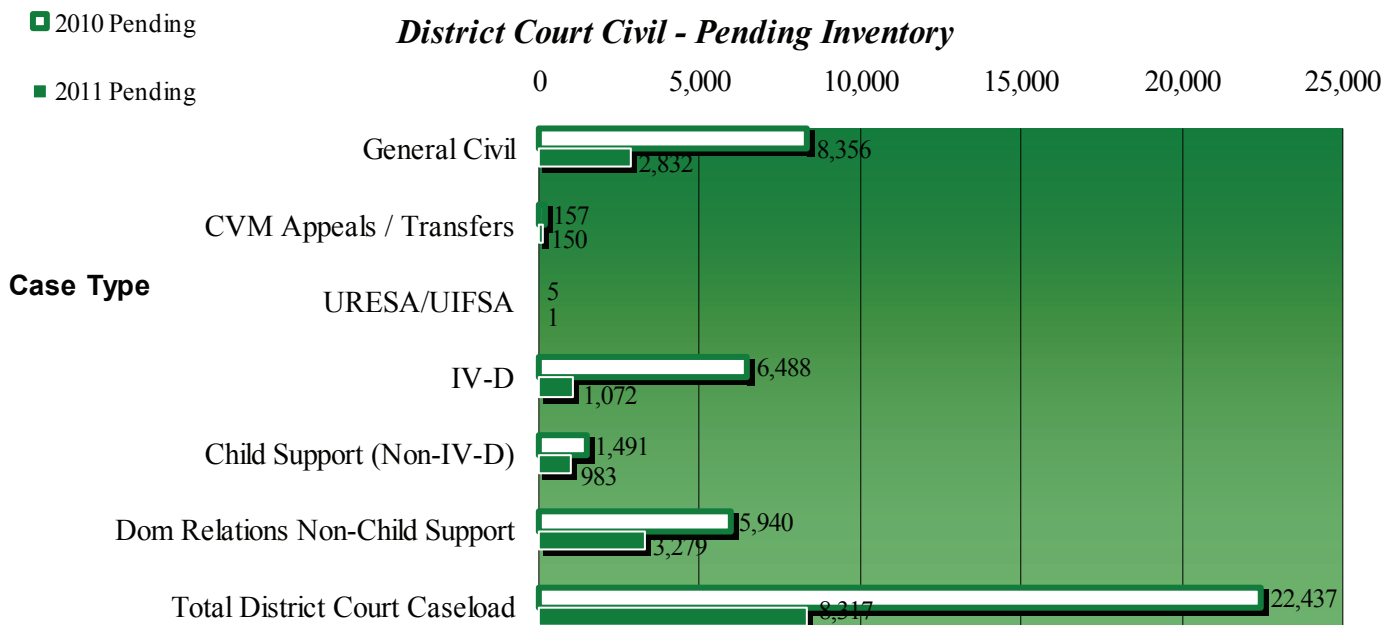
**TABLE 13**  
**District Court Civil Caseload Inventory**  
**Change in Pending Number & Percent**

<i>Case Type</i>	<i>Begin Pending</i>	<i>Number Filed</i>	<i>Number Disposed</i>	<i>End Pending</i>	<i>Change In Pending Cases Number</i>	<i>Percent</i>
<i>General Civil</i>	8,356	7,178	12,702	2,832	-5,524	-66.1
<i>CVM Appeals / Transfers</i>	157	628	635	150	-7	-4.5
<i>URESAs/UIFSAs</i>	5	0	4	1	-4	-80.0
<i>IV-D</i>	6,488	2,480	7,896	1,072	-5,416	-83.5
<i>Child Support (Non-IV-D)</i>	1,491	748	1,256	983	-508	-34.1
<i>Dom Relations Non-Child Support</i>	5,940	10,220	12,881	3,279	-2,661	-44.8
<i>Total District Court Caseload</i>	22,437	21,254	35,374	8,317	-14,120	-62.9

The change in pending cases from the beginning to the end of FY 2010-2011 indicates whether the Court is disposing of cases as quickly as they are filed; and if not, at what rate the Court is falling behind. In FY 2010-2011, a significant decrease in pending cases occurred.

Table 13 demonstrates an overall 62.9% decrease in the District Court Civil pending caseload, as dispositions far exceeded the number of filings. \* This number adjusted since publication of the FY09-10 statistical report.

**Chart 6**  
**District Court Civil - Pending Inventory**



**TABLE 14**  
**District Court Civil Caseload Inventory**  
**Disposed Cases as a Percent of Filings**

<i>Case Type</i>	<i>Number Filed</i>	<i>Number Disposed</i>	<i>End Pending</i>	<i>Disposed Cases as a % of Filings</i>	<i>End Pending Cases as a % of Filings</i>
<i>General Civil</i>	7,178	12,702	2,832	177.0	39.5
<i>CVM Appeals/Transfers</i>	628	635	150	101.1	23.9
<i>URESAs/UIFSAs</i>	0	4	1	N/A	N/A
<i>IV-D</i>	2,480	7,896	1,072	318.4	43.2
<i>Child Support (non IV-D)</i>	748	1,256	983	167.9	131.4
<i>Domestic Relations Non-Child Support</i>	10,220	12,881	3,279	126.0	32.1
<b>Total District Court Caseload</b>	21,254	35,374	8,317	166.4	39.1

Another method of determining how well the District Court is managing its caseload is by reviewing the number of disposed cases as a percentage of filings, and the number of pending cases as a percentage of filings. The Court is managing its caseload effectively if disposed cases comprise a large percentage of filings and if pending cases comprise a low percentage of filings.

According to the National Center for State Courts (NCSC), disposed cases should comprise at least 90% of cases filed. Table 14 illustrates that the 26th Judicial District accomplished this goal in all areas of the District Civil Caseload for FY 2010-2011.

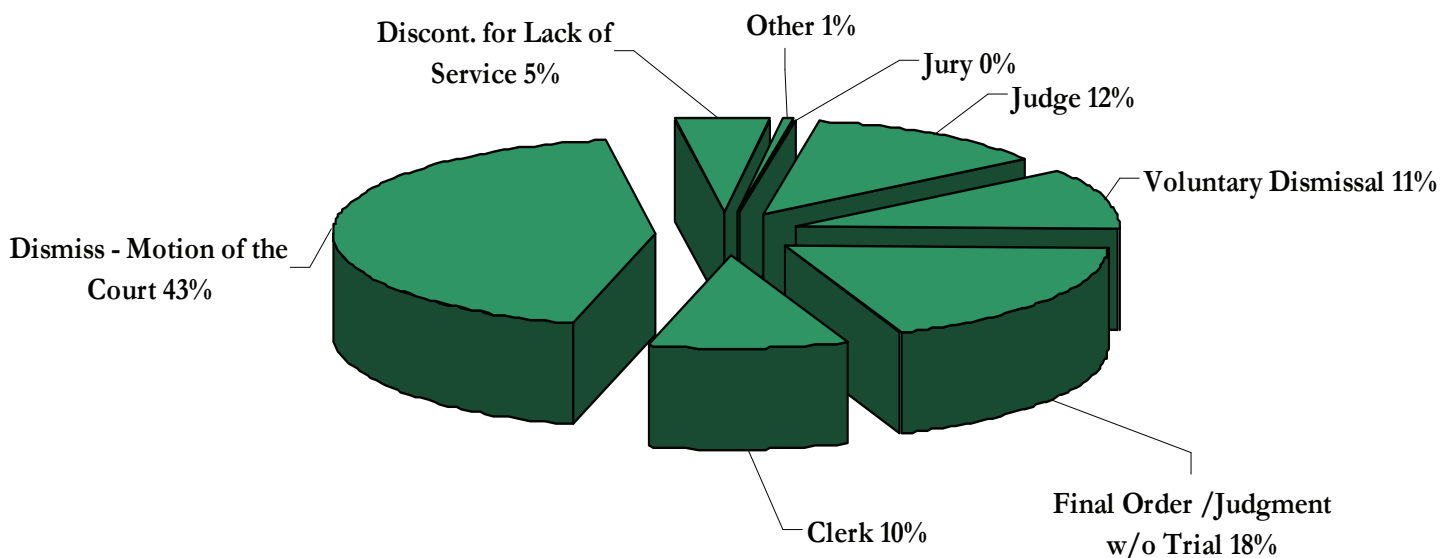


**TABLE 15**  
**District Court Civil Caseload**  
**Manner of Disposition**

<i>Disposition Method</i>	<i>General Civil</i>		<i>CVM Appeal /Transfer</i>		<i>URES/ UIFSA</i>		<i>IV - D</i>		<i>Non IV - D</i>		<i>Domestic Relations Non-Child Support</i>		<i>Total District</i>	
	#	%	#	%	#	%	#	%	#	%	#	%	#	%
<i>Jury</i>	18	0.1	1	0.2	0	0.0	0	0.0	0	0.0	0	0.0	19	0.1
<i>Judge</i>	1,107	8.7	385	61.2	0	0.0	1,049	13.3	135	10.7	1,643	12.8	4,319	12.2
<i>Voluntary Dismissal</i>	2,578	20.3	126	20.0	0	0.0	338	4.3	60	4.8	618	4.8	3,720	10.5
<i>Final Order /Judgment w/o Trial</i>	121	1.0	18	2.9	0	0.0	554	7.0	247	19.7	5,595	43.4	6,535	18.5
<i>Clerk</i>	3,446	27.2	95	15.1	0	0.0	0	0.0	0	0.0	4	0.0	3,545	10.0
<i>Dismiss - Motion of the Court</i>	4814	37.9	3	0.5	4	100.0	5340	67.6	738	58.8	4,411	34.2	15,310	43.3
<i>Discontinue for Lack of Service</i>	517	4.1	0	0.0	0	0.0	614	7.8	37	2.9	550	4.3	1,718	4.9
<i>Other</i>	87	0.7	1	0.2	0	0.0	1	0.0	39	3.1	60	0.5	188	0.5
<i>Total</i>	12,688	100.0	629	100.0	4	100.0	7,896	100.0	1,256	100.0	12,881	100.0	35,354	100.0

Table 15 and Chart 6 show the manner in which cases are disposed. The calculated percentages are the percent of dispositions.

**Chart 7**  
**District Court Civil - Manner of Disposition**



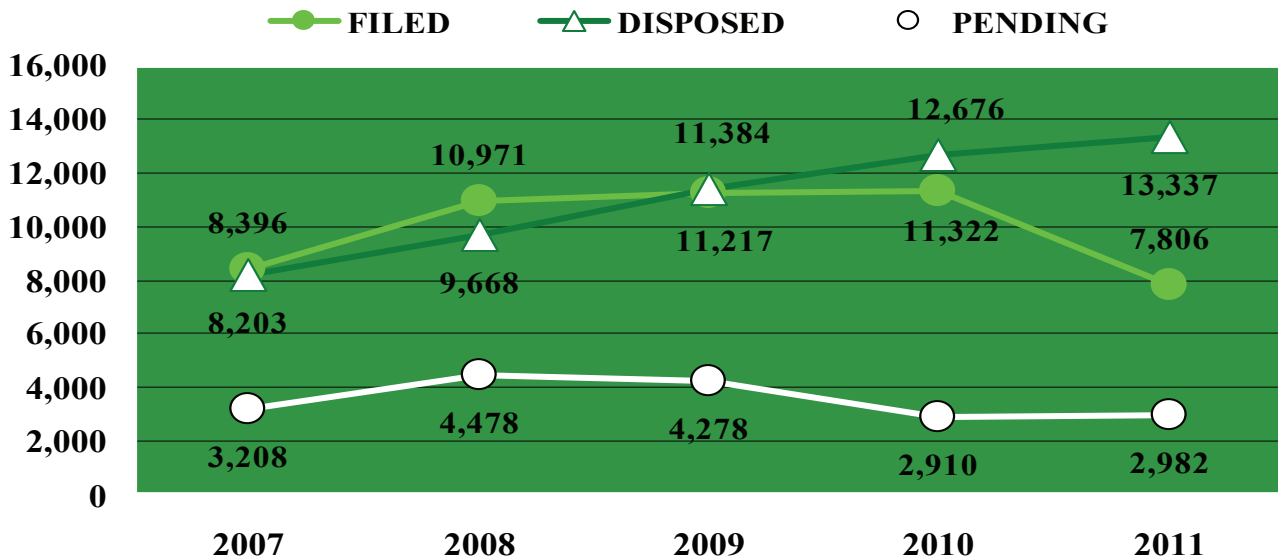
**TABLE 16**  
**District Court General Civil Trend Analysis**  
**Number & Percent Changes in Filings, Dispositions, and Pending**

	<b>FILED</b>		<b>DISPOSED</b>		<b>PENDING</b>	
	<b>#</b>	<b>%</b>	<b>#</b>	<b>%</b>	<b>#</b>	<b>%</b>
<b>07</b>	8,396	-	8,203	-	3,208	-
<b>08</b>	10,971	30.7	9,668	17.9	4,478	39.6
<b>09</b>	11,217	2.2	11,384	17.7	4,278	-4.5
<b>10</b>	11,322	0.9	12,676	11.3	2,910	-32.0
<b>11</b>	7,806	-31.1	13,337	5.2	2,982	2.5
<b>07-11</b>	49,712	-7.0	55,268	62.6	17,856	-7.0

Table 16 and Chart 7 offer a trend analysis for filings, dispositions and pending caseloads in General Civil District Court from 2007-2011. Areas to look for are increases in filings coupled with decreases in dispositions. This indicates that the Court is falling behind in its workload and that a noticeable increase in the pending caseload will result. If dispositions fail to rise at the same rate as filings, the same situation will occur.

The table above reveals that the dispositions kept pace with filings. However, adjustments found in transitioning to a new statistical tracking application have resulted in an overall increase in the pending caseload.

**Chart 8**  
**District Court Trend Analysis**  
**General Civil / CVM Appeals**

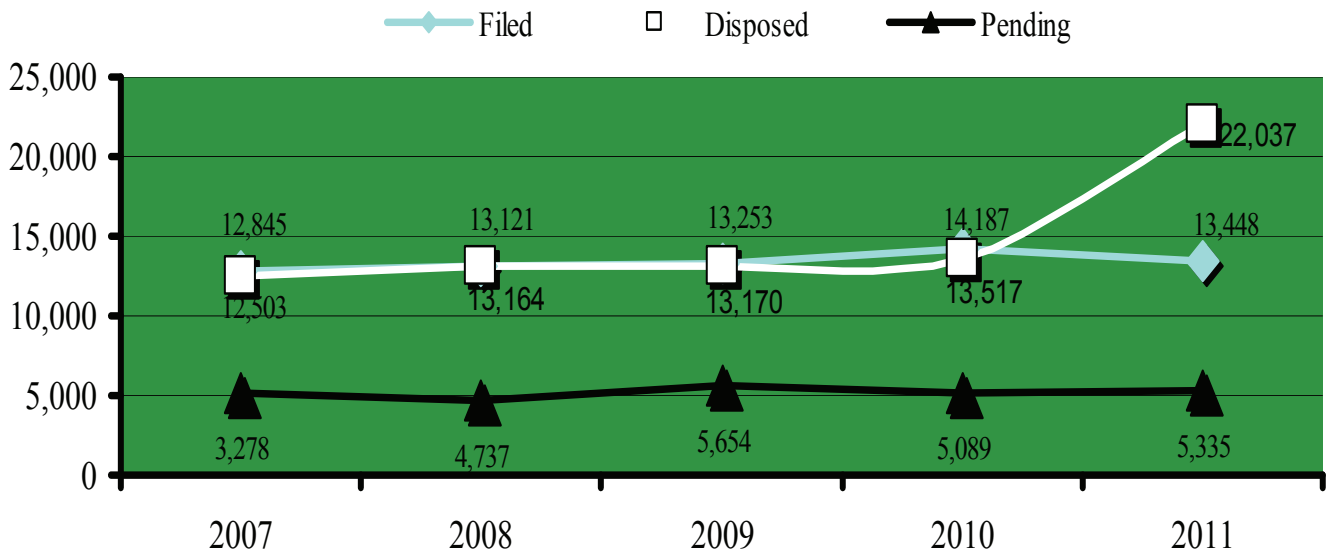


**TABLE 17**  
**District Court Domestic Relations Trend Analysis**  
**Number & Percent Changes in Filings, Dispositions, & Pending Cases**

	<b>FILED</b>		<b>DISPOSED</b>		<b>PENDING</b>	
	<b>#</b>	<b>%</b>	<b>#</b>	<b>%</b>	<b>#</b>	<b>%</b>
<b>2007</b>	12,845	-	12,503	-	5,082	-
<b>2008</b>	13,121	2.1	13,164	5.3	4,737	-6.8
<b>2009</b>	13,253	1.0	13,170	0.0	5,654	19.4
<b>2010</b>	14,187	7.0	13,517	2.6	5,089	-10.0
<b>2011</b>	13,448	-5.2	22,037	63.0	5,335	4.8
<b>07-11</b>	66,854	4.7	74,391	76.3	25,897	5.0

Table 17 and Chart 8 offer a trend analysis for filings, dispositions, and pending caseloads in District Court, Domestic Relations form 2007-2011. Areas to look for are increases in filings coupled with decreases in dispositions. This indicates that the Court is falling behind in its workload and that a noticeable increase in the pending caseload will result. If dispositions fail to rise at the same rate as filings, the same situation will occur. Dispositions more than kept pace with filings in FY2010-2011. However, adjustments found in transitioning to a new statistical tracking application have resulted in an overall increase in the pending caseload.

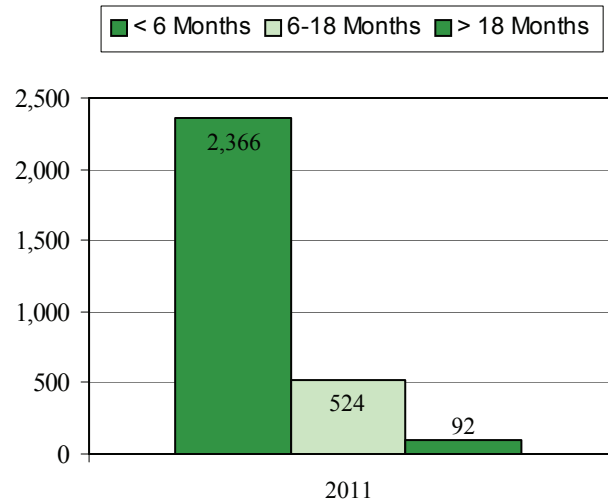
**Chart 9**  
**District Court Trend Analysis**  
**Domestic Relations**



**TABLE 18**  
**Age of District Court General Civil /CVM Appeals**  
**Pending Caseload**

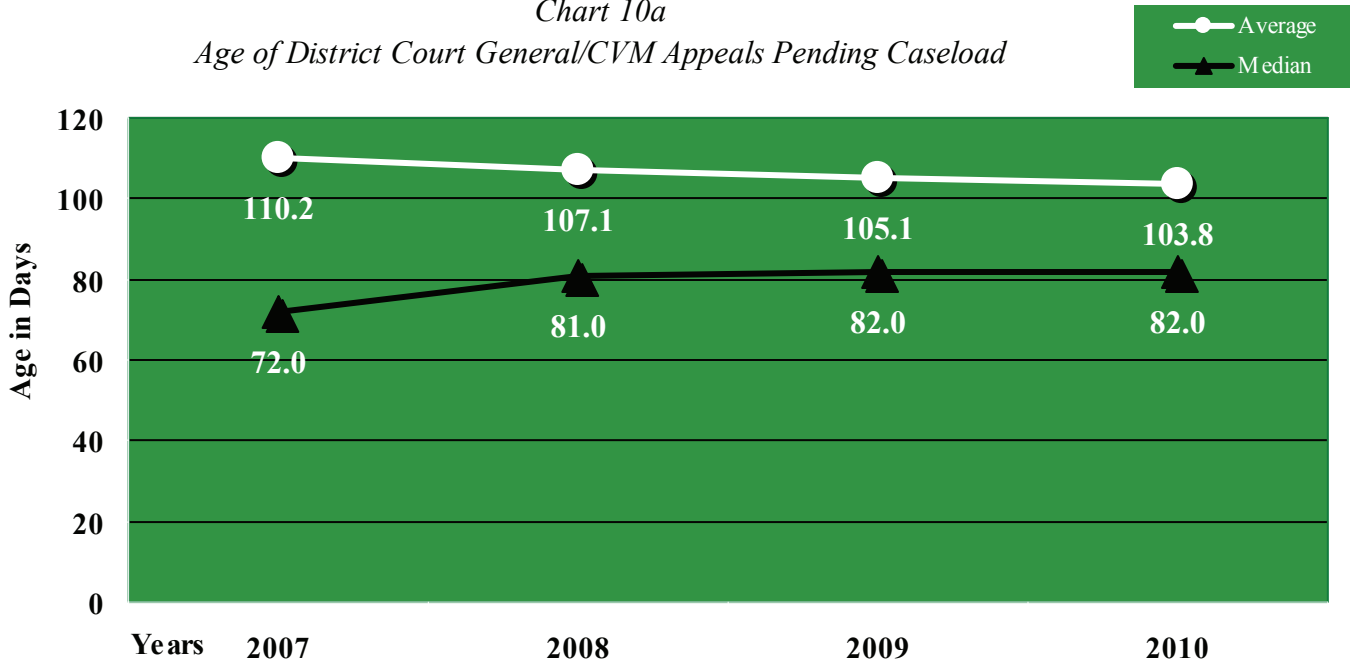
Year	> 18 Mos		Total					Median In Days	
	#	%	Pending	< 6 Mos	6 -18 Mos		General Civil	CVM Appeals	
2007	33	1.0							
2008	15	0.3							
2009	3	0.1							
2010	9	0.3							
2011	92	3.1	2,982	2,366	79.3	524	17.6	78	40.0

**Chart 10**  
**Pending Caseload Time Periods**



For General Civil cases, our target is to dispose of 90% within 12 months of the date filed, 98% within 18 months of date filed; and 100% within 24 months. In the 26th Judicial District, the percentage of pending cases older than 18 months has slightly increased by 0.1%.

**Chart 10a**  
**Age of District Court General/CVM Appeals Pending Caseload**



**TABLE 19**  
**Age of District Court Pending Domestic Relations Caseload**

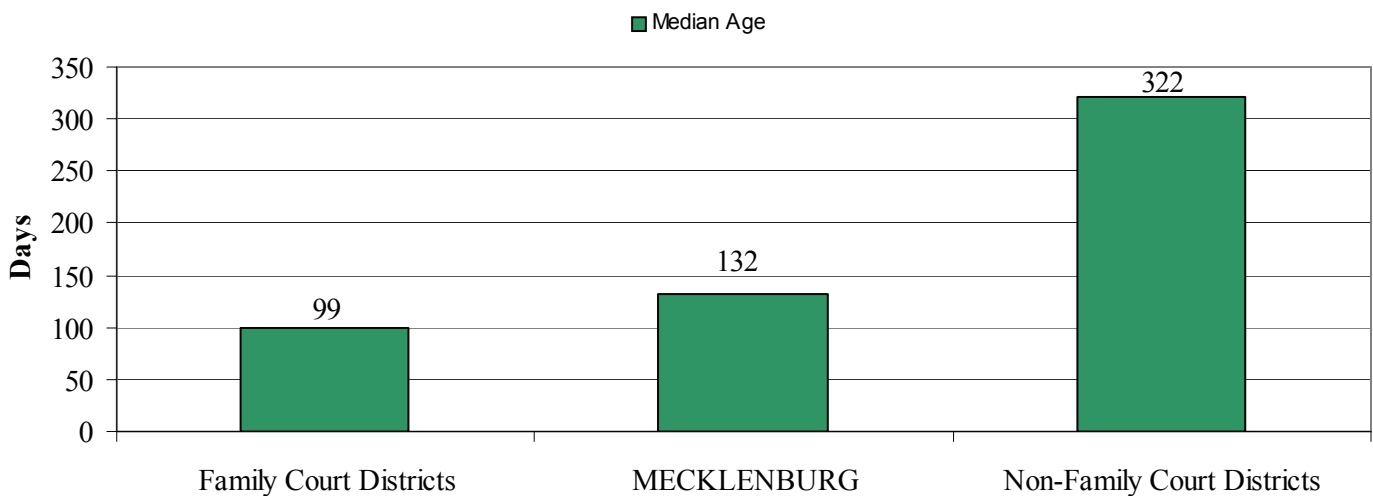
Year	Total Pending		< 6 Mos.		6 -12 Mos.		> 1 Year	
	#	#	%	#	%	#	%	
2007	5,082	2,883	56.7	737	14.5	1,462	28.8	
2008	4,737	2,931	61.9	812	17.1	994	21.0	
2009	4,654	3,078	66.1	792	17.0	784	16.8	
2010	5089	2986	58.7	854	16.8	1249	24.5	
2011	5,335	3,036	56.9	971	18.2	1,327	24.9	

*In FY 2010-2011, this district's pending caseload greater than one year slightly increased by 0.4%.*

*Time standards have also been established specifically for the Family Courts of North Carolina. They are as follows:*

Permanent Alimony and Equitable Distribution	Support	Post Separation Support
90% of cases disposed within 270 days after filing, remainder within 365 days.	Temporary Orders in 90% of cases within 30 days after filing; 100% within 45 days.  Permanent Orders in 75% of cases within 90 days of service;  in 90% within 180 days of service;  and in 100% of cases within 270 days of service.	Orders in 75% of cases within 60 days of filing,  Orders in 100% of cases within 90 days of filing.
		Custody
		Temporary Order in 90% of cases within 30 days;  in 100% of cases within 45 days.  Trial completed in 90% of cases within 150 days, in 100% within 180 days.

**Chart 11**  
**Age of District Court Pending Domestic Relations Caseload**



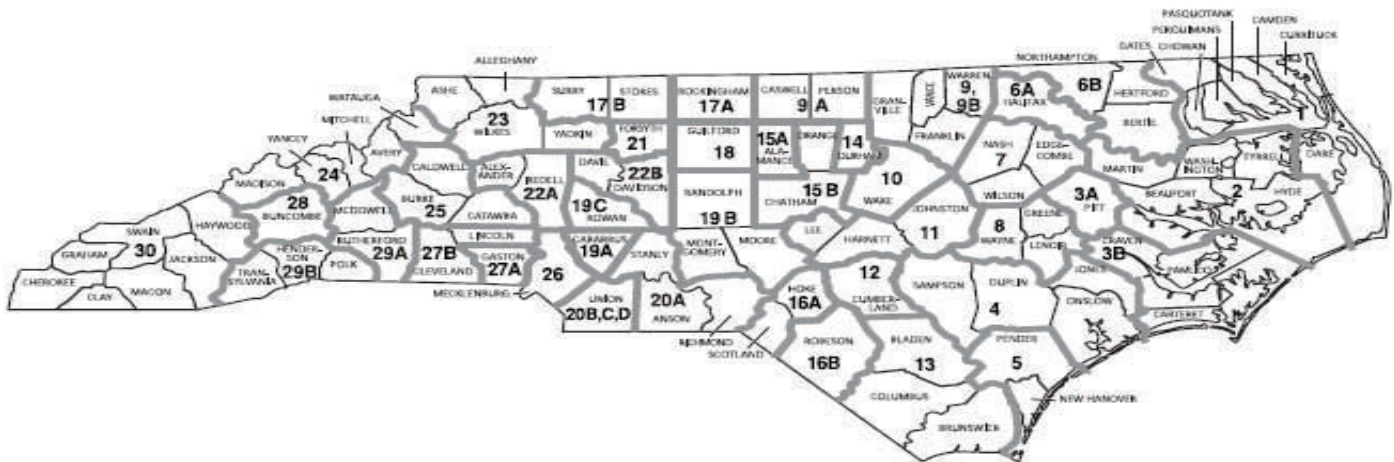


**TABLE 20a**  
**District Court Ranking of Trial Court Administrator Districts**

TCA District	Total Pending #	TCA District	<6 Mos.		TCA District	6-18 Mos.		TCA District	>18 Mos.	
			#	%		#	%		#	%
29A	238	7	320	23%	12	7	2%	12	12	3%
12	422	3B	341	31%	<b>26</b>	<b>524</b>	<b>18%</b>	<b>26</b>	<b>92</b>	<b>3%</b>
29B	449	18	1,026	41%	29A	53	22%	27A	34	6%
27A	530	4	501	48%	7	306	22%	29A	22	9%
14	674	10	2,504	52%	28	223	23%	14	72	11%
5	887	29B	246	55%	18	574	23%	5	114	13%
28	967	28	545	56%	10	1,104	23%	29B	93	21%
4	1,038	21	812	58%	29B	110	24%	28	199	21%
3B	1,109	5	519	59%	27A	139	26%	10	1,169	24%
21	1,392	14	423	63%	3B	285	26%	21	580	42%
7	1,417	27A	357	67%	14	179	27%	3B	483	44%
18	2,519	29A	163	68%	5	254	29%	4	537	52%
<b>26</b>	<b>2,982</b>	<b>26</b>	<b>2,366</b>	<b>79%</b>	21	411	30%	7	791	56%
10	4,777	12	403	95%	4	322	31%	18	1,493	59%
State	19,401	State	10,526	54%	State	4,491	23%	State	5,691	29%

*Despite managing the largest volume in the state, the age of the general civil caseload continues to be among the lowest in the state.*

**North Carolina District Court Districts**  
Effective January 15, 2009



Note: Districts 9 and 9B, and districts 20B, 20C, and 20D are districts for electoral purposes only. They are combined for administrative purposes.

Copyright © 2009  
School of Government  
The University of North Carolina at Chapel Hill

**TABLE 20b**  
**District Court Ranking of Trial Court Administrator Districts**  
**By Age of Pending Domestic Relations Caseload**

<i>TCA</i>	<i>Total</i>	<i>TCA</i>	<i>&lt; 6 Mos</i>		<i>TCA</i>	<i>6 TO 12 Mos</i>		<i>TCA</i>	<i>&gt; 12 Mos</i>	
<i>District</i>	<i>Pending</i>	<i>District</i>	<i>#</i>	<i>%</i>	<i>District</i>	<i>#</i>	<i>%</i>	<i>District</i>	<i>#</i>	<i>%</i>
4	2,699	3B	340	10%	3B	577	17%	14	130	15%
5	1,206	27A	306	12%	27A	565	23%	10	534	18%
7	2,334	18	787	16%	7	574	25%	21	334	20%
10	2,895	7	463	20%	18	1,224	25%	12	615	21%
12	2,928	29B	200	21%	4	863	32%	29A	96	22%
14	874	4	611	23%	5	390	32%	<b>26</b>	<b>1,328</b>	<b>25%</b>
18	4,937	<b>26</b>	<b>1,607</b>	<b>30%</b>	28	497	33%	5	365	30%
21	1,704	12	975	33%	29B	340	35%	28	514	34%
<b>26</b>	<b>5,335</b>	28	491	33%	14	324	37%	29B	432	44%
28	1,502	5	451	37%	21	665	39%	4	1,225	45%
27A	2,450	29A	172	39%	29A	172	39%	7	1,297	56%
29A	440	10	1,145	40%	10	1,216	42%	18	2,926	59%
29B	972	21	705	41%	<b>26</b>	<b>2,400</b>	<b>45%</b>	27A	1,579	64%
3B	3,371	14	420	48%	12	1,338	46%	3B	2,454	73%
State	33,647	State	8,673	26%	State	11,145	33%	State	13,829	41%

**TABLE 20c**  
**District Court Ranking of Family Court Districts**  
**By Age of Pending Domestic Relations Caseload**

<i>Family</i>	<i>Total</i>	<i>Family</i>	<i>&lt; 6 mos</i>		<i>Family</i>	<i>6 to 12 mos</i>		<i>Family</i>	<i>&gt; 12 mos</i>	
<i>District</i>	<i>Pending</i>	<i>District</i>	<i>#</i>	<i>%</i>	<i>District</i>	<i>#</i>	<i>%</i>	<i>District</i>	<i>#</i>	<i>%</i>
06A	130	20B	358	50.9	8	39	10.5	8	26	7
20A	320	<b>26</b>	<b>2423</b>	<b>56.9</b>	06A	14	10.8	14	43	7
03A	369	12	1195	59.5	03A	45	12.2	19B	63	9.9
8	371	10	1483	62.9	20A	40	12.5	28	81	10.3
14	615	5	546	66.8	14	78	12.7	06A	14	10.8
19B	636	03A	253	68.6	28	101	12.8	25	94	11.3
20B	703	20A	233	72.8	19B	93	14.6	20A	47	14.7
28	789	25	615	74	25	122	14.7	10	417	17.7
5	817	19B	480	75.5	5	121	14.8	5	150	18.4
25	831	28	607	76.9	12	358	17.8	03A	71	19.2
12	2010	06A	102	78.5	20B	128	18.2	12	457	22.7
10	2357	14	494	80.3	<b>26</b>	<b>778</b>	<b>18.3</b>	<b>26</b>	<b>1061</b>	<b>24.9</b>
<b>26</b>	<b>4262</b>	8	306	82.5	10	457	19.4	20B	217	30.9

District Court  
Criminal



**TABLE 21**  
**District Court Criminal Caseload Inventory**  
**Change in Pending Number & Percent**

<i>Case Type</i>	<i>Begin Pending</i>	<i>Number Filed</i>	<i>Number Disposed</i>	<i>End Pending</i>	<i>Change In Pending Number</i>	<i>Percent</i>
<i>CR (Non-Motor Vehicle)</i>	24,483	47,454	49,270	22,667	-1,816	-7.4

The District Court disposed of 49,270 non-motor vehicle criminal cases in FY 2010-2011 leaving the court with a pending caseload of 22,667.

**TABLE 22**  
**District Court Criminal Caseload Inventory**  
**Disposed Cases as a Percent of Filings**

---

<i>Case Type</i>	<i>Number Filed</i>	<i>Number Disposed</i>	<i>Disposed Cases as a % of Filings</i>
<i>Motor Vehicles</i>	121,155	132,590	109.4
<i>Non-Motor Vehicle</i>	47,454	49,270	103.8
<i>Infractions</i>	42,853	46,079	107.5

The percentages for Motor Vehicles, Non-Motor Vehicles and Infractions in FY 2010-2011 were 109.4%, 103.8% and 107.5%, respectively. Dispositions exceeded filings in all categories.



**TABLE 23**  
**District Court Clearance Rate (Non-Motor Vehicle)**

<i>Year</i>	<i>Dispositions</i>	<i>New Filings</i>	<i>Clearance Rate as %</i>
2007	54,748	54,997	100%
2008	52,977	52,798	100%
2009	56,593	56,030	101%
2010	56,628	56,644	100%
2011	49,270	47,454	104%
2007-11	270,216	267,923	101%

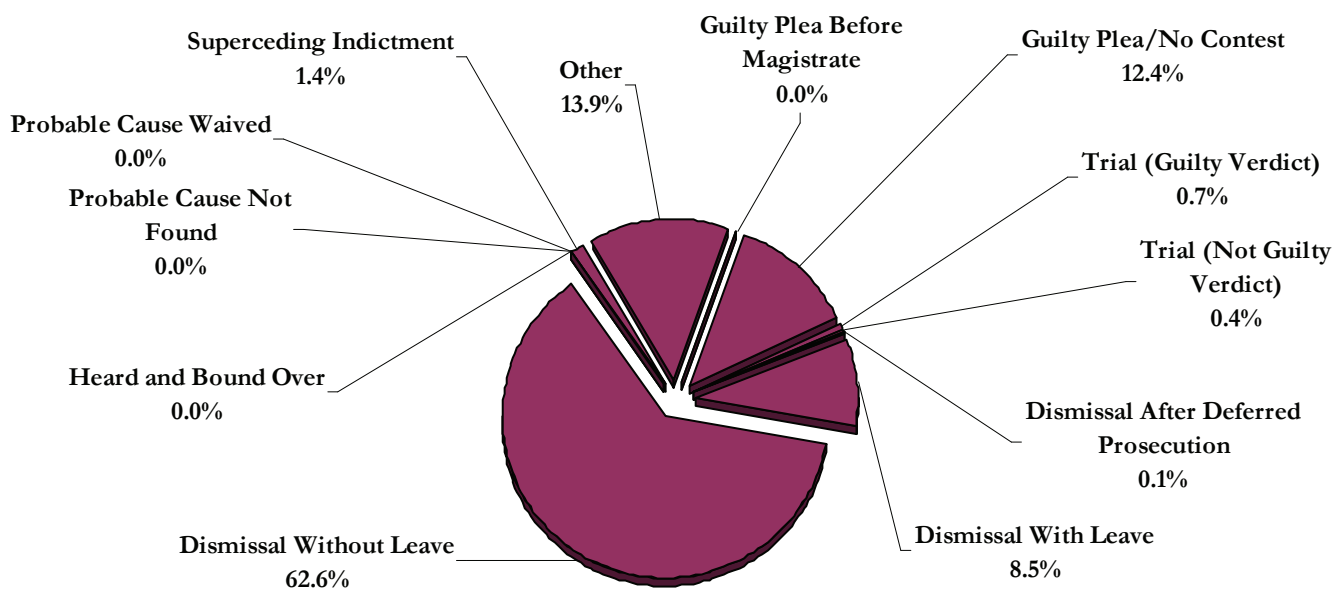
*A clearance rate is the number of dispositions compared with the number of filings. This table reflects the clearance rate of non-motor vehicle cases.*



**TABLE 24**  
**District Court Criminal Caseload Inventory**  
**Manner of Disposition**

<i>Disposition Method</i>	<i>Number Disposed</i>	<i>Percentage Disposed</i>
<i>Worthless Check Waiver</i>	6	0.0
<i>Guilty Plea Before Magistrate</i>	23	0.0
<i>Guilty Plea/No Contest</i>	22,482	12.4
<i>Trial (Guilty Verdict)</i>	1,324	0.7
<i>Trial (Not Guilty Verdict)</i>	662	0.4
<i>Dismissal After Deferred Prosecution</i>	205	0.1
<i>Dismissal With Leave</i>	15,492	8.5
<i>Dismissal Without Leave</i>	113,777	62.6
<i>Heard and Bound Over</i>	0	0.0
<i>Probable Cause Not Found</i>	74	0.0
<i>Probable Cause Waived</i>	1	0.0
<i>Superceding Indictment</i>	2,534	1.4
<i>Other</i>	25,280	13.9
<b>Total</b>	<b>181,860</b>	<b>100.0</b>

**Chart 12**  
**District Court Criminal Caseload Manner of Disposition**



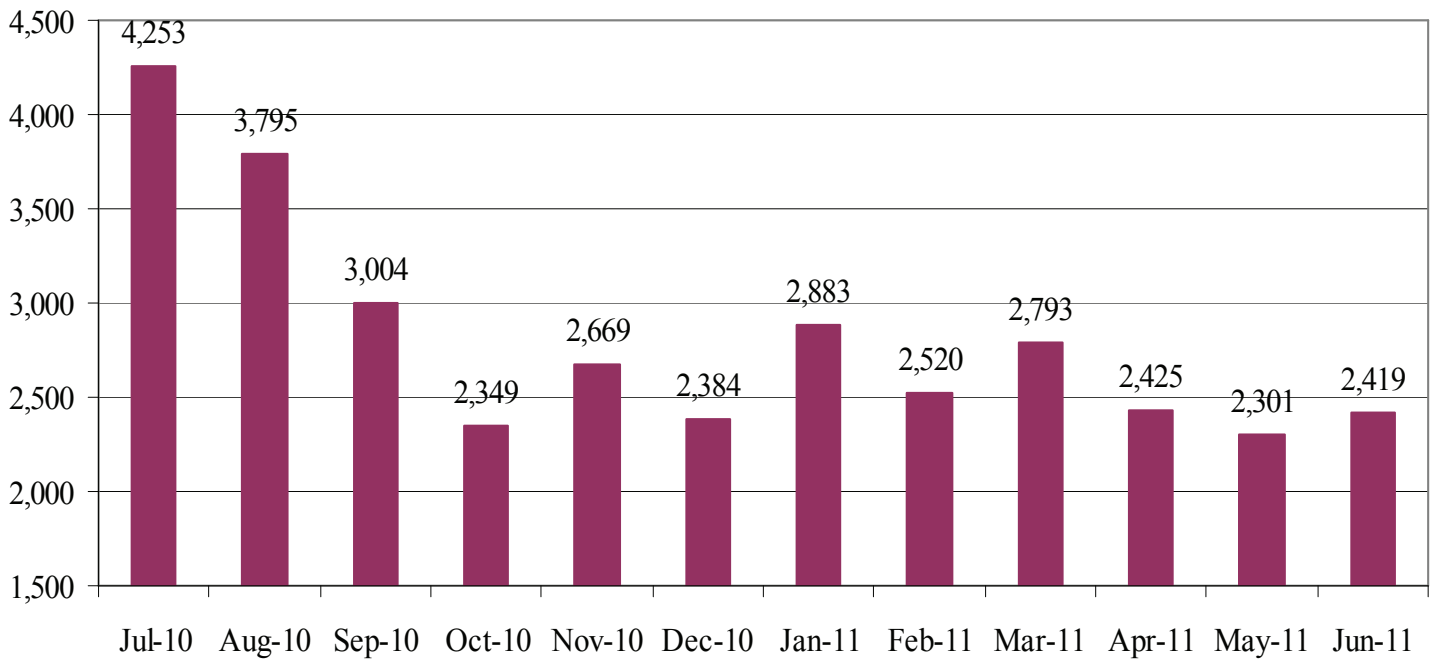
**TABLE 25**  
**District Court Trend Analysis**  
**Number & Percent Changes in Filings & Dispositions**

<i>Case Type</i>	<i>Filings</i>						<i>Dispositions</i>					
	<i>2007</i>	<i>2008</i>	<i>2009</i>	<i>2010</i>	<i>2011</i>	<i>07-11</i>	<i>2007</i>	<i>2008</i>	<i>2009</i>	<i>2010</i>	<i>2011</i>	<i>07-11</i>
<i>Motor Vehicle</i>	100,996	100,398	115,149	124,510	121,155	562,208	100,494	100,311	113,785	124,572	132,590	571,752
<i>% Change</i>	0.0	-0.6	14.7	8.1	-2.7	20.0	0.0	-0.2	13.4	9.5	6.4	31.9
<i>Non Motor Vehicle</i>	54,997	52,798	56,030	56,644	47,454	220,469	54,748	52,977	56,593	56,628	49,270	270,216
<i>% Change</i>	0.0	-4.0	6.1	1.1	-16.2	-13.7	0.0	-3.2	6.8	0.1	-13.0	-10.0
<i>Infractions</i>	57,420	55,742	46,992	43,793	42,853	246,800	56,782	57,561	49,401	43,330	46,079	253,153
<i>% Change</i>	0.0	-2.9	-15.7	-6.8	-2.1	-25.4	0.0	1.4	-14.2	-12.3	6.3	-18.8
<i>Total</i>	213,413	208,938	218,171	224,947	211,462	1,076,931	212,024	210,849	219,779	224,530	227,939	867,182
<i>% Change</i>	0.0	-2.1	4.4	3.1	-6.0	-0.9	0.0	-0.6	4.2	2.2	1.5	7.5

*There has been 9% decrease in District Court Criminal findings over the last five year with a 7.5% increase of dispositions.*



**CHART 13**  
**MeckTrafficTickets**  
**Number of Visits**

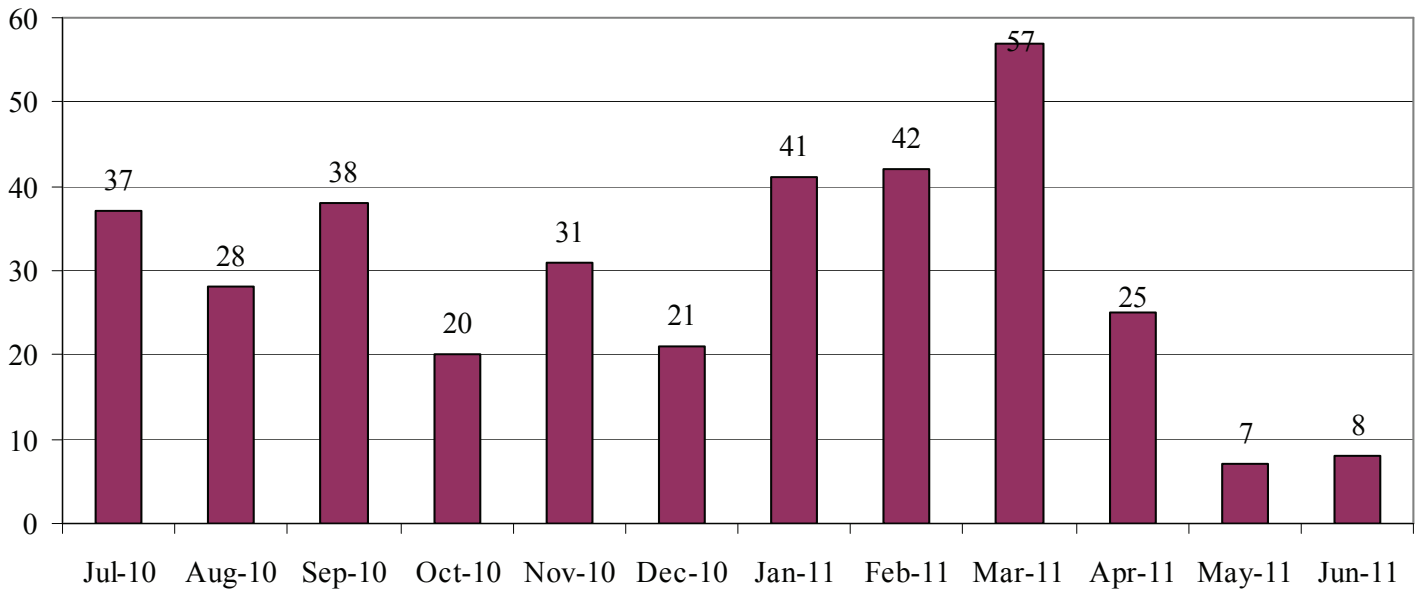


*The chart above reflects the number of visits to the MeckTraffic Tickets website for FY2010-2011.*





**CHART 14**  
**Number of Tickets Amended Through MeckTraffic Tickets Website**



**Chart 15**  
**Country of Origin for Visits to MeckTraffic Tickets**

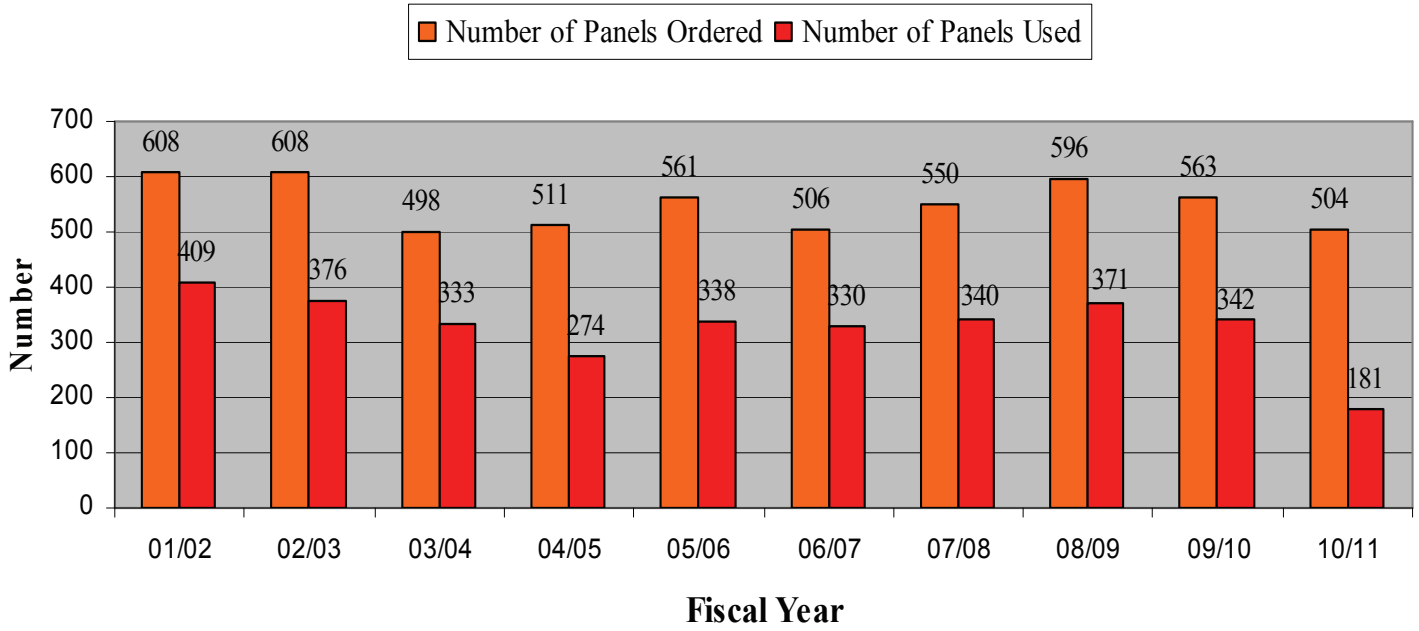
*In order of frequency, the following countries are representative of those who have accessed the website link: United States (33,601), Canada, Mexico, United Kingdom, India, China, Puerto Rico, Italy, Netherlands, Turkey, Brazil, Germany, Israel, Australia, Belize, Czech Republic, Kuwait, Azerbaijan, Barbados, Chile, Colombia, France, Haiti, Hong Kong, Indonesia, Lebanon, Pakistan, Poland, Qatar, Russia, and Sudan.*



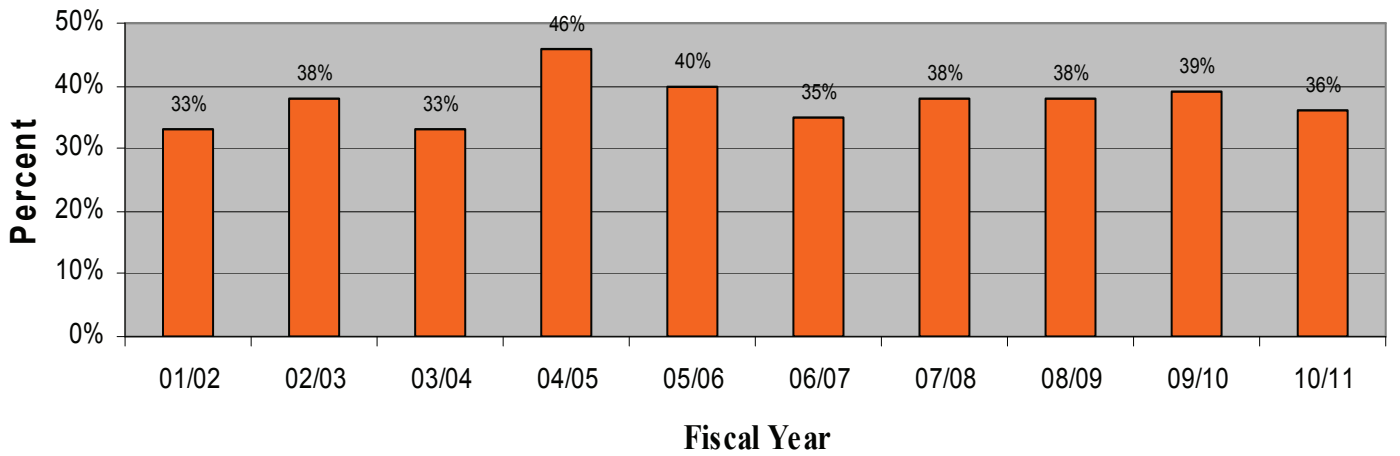
# Jury Management



**CHART 16**  
*Jury Utilization Comparison of Requested and Unused Panels*



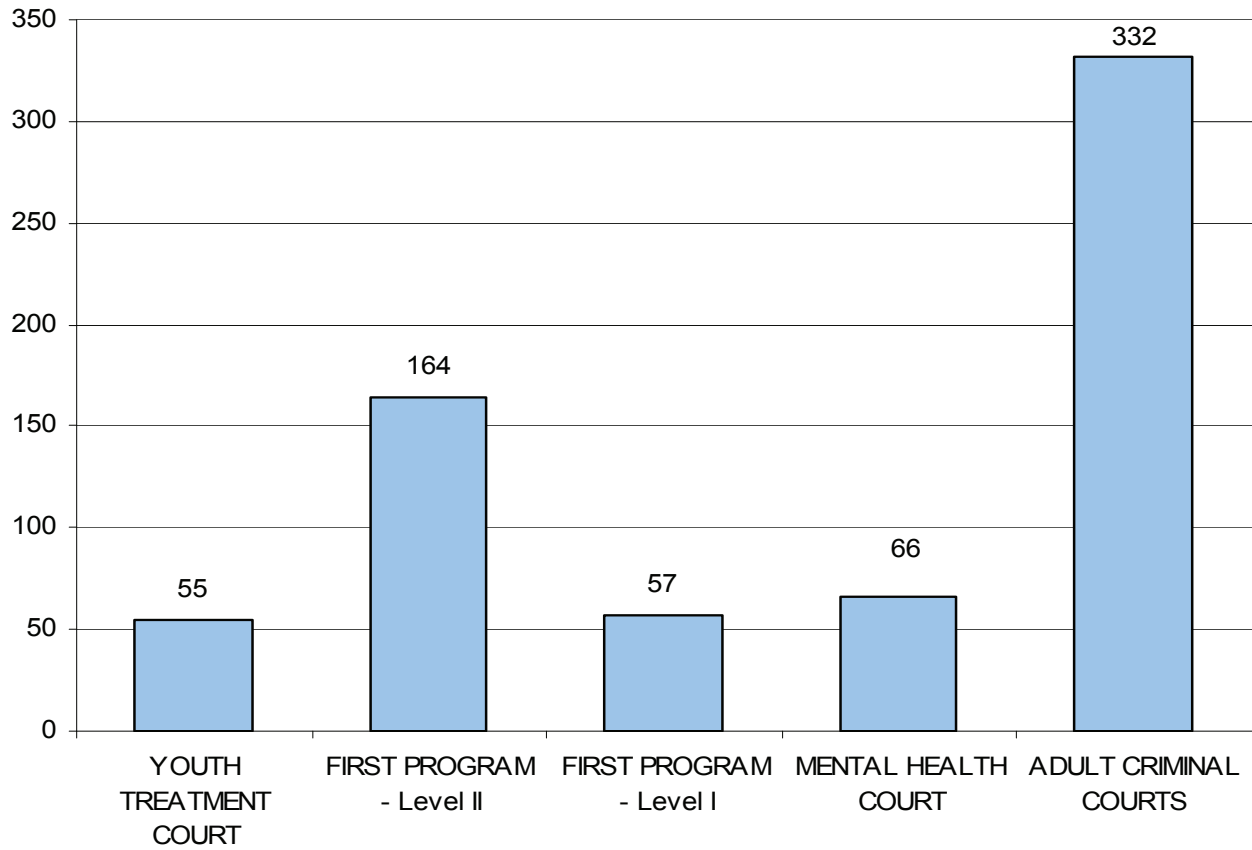
**Chart 17**  
*Jury Utilization Comparison of Unused Panels Percentage*



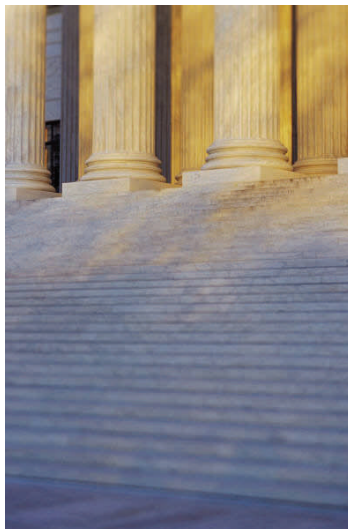
# Drug Treatment Court



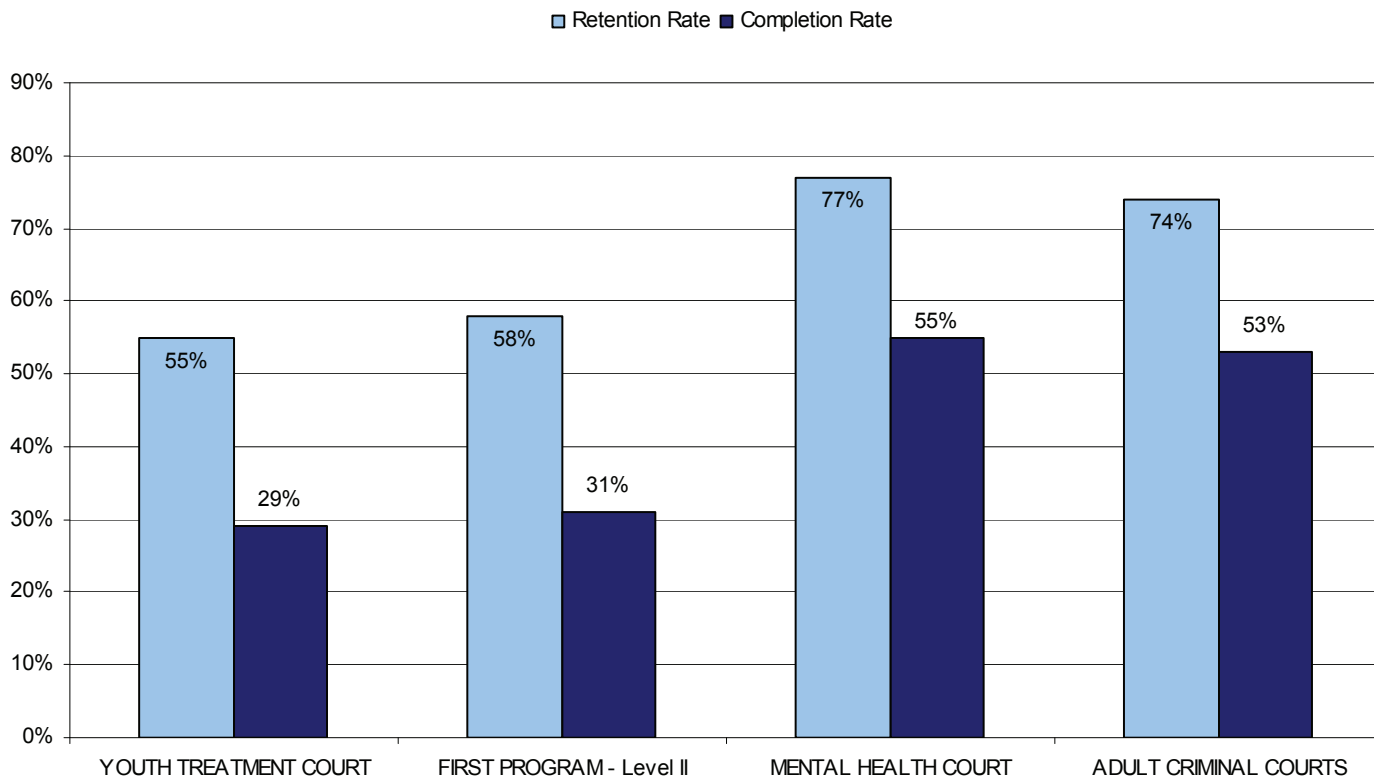
**CHART 18**  
**Mecklenburg County S.T.E.P. Court Programs**  
**Number of persons served FY 10-11**



*The five Drug Treatment Court programs in Mecklenburg County served a total of 674 clients during FY 2010-2011. This compared to FY09-10 where a total of 800 clients were served.*



**CHART 19**  
**Mecklenburg County S.T.E.P. Court programs**  
**Retention and completion rates**



*The chart above indicates that over half of the clients referred to either the Adult Criminal Drug Treatment Court program or Mental Health Court during FY 2010-2011 completed the program. However, the completion rates were less than 50% in the other treatment courts. The retention rate remains above 50% in all five treatment courts.*



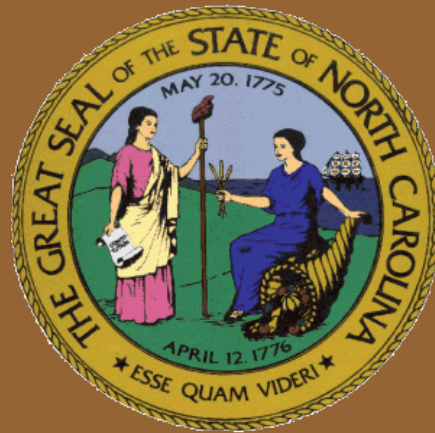
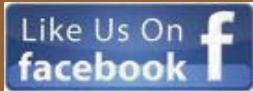


**The Trial Court  
Administrator's Office**

Building Public Trust and Confidence Through Service, Excellence, and Leadership

*Mecklenburg County Courthouse  
832 East 4th Street  
Suite 4420  
Charlotte, NC 28202*

*Phone: 704-686-0269  
Fax: 704-686-0340  
www.nccourts.org*



This Report was prepared by:

Community Access and Outreach Division of The Trial Court Administrator's Office

26th Judicial District of North Carolina

832 East Fourth Street

Suite 4420

Charlotte, NC 28202

Direct: 704-686-0269 or 704-686-0268

Email: [charles.w.keller@nccourts.org](mailto:charles.w.keller@nccourts.org) or [maura.e.chavez@nccourts.org](mailto:maura.e.chavez@nccourts.org)

***Copies of this report were printed using funds allocated by Mecklenburg County.  
To view an electronic copy of this report, please visit our website.***