

The 26th Judicial District of North Carolina

ANNUAL STATISTICAL REPORT

2009-2010

A Publication of The Trial Court Administrators Office of
The 26th Judicial District of North Carolina



Superior Court

Table 1	Civil Caseload Inventory-Change in Pending Number & Percent; Chart 1 Civil Pending Inventory	...5
Table 2	Civil Caseload Inventory-Disposed Cases as a Percent of Filings; End Pending as a Percent of Filings	...6
Table 3	Civil Caseload-Manner of Disposition; Chart 2 Civil Manner of Disposition	...7
Table 4	Trend Analysis-Number & Percent Changes in Filings, Dispositions and Pending Cases 2006-2010 Chart 3 Trend Analysis for 2006-2010; Filings, Dispositions and Pending Cases	...8
Table 5	Trend Analysis –Age of Pending Caseload 2006-2010; Chart 4 Trend Analysis for 2006-2010; Number of Cases Pending	...9
Table 6	Ranking of TCA Districts by Age of Pending Caseload	...10
<hr/>		
Table 7	Criminal Caseload-Change in Pending Number and Percent	...12
Table 8	Criminal Caseload Inventory-Disposed Cases as a Percent of Filings; End Pending as a Percent of Filings	...12
Table 9	Superior Court Clearance Rate Adjusted for Absconded Defendants	...13
Table 10	Trend Analysis-Number & Percent Changes in Filings, Dispositions, & Pending Cases (Felonies)	...14
Table 11	Trend Analysis-Number & Percent Changes in Filings, Dispositions & Pending Cases (Misdemeanors)	...14
Table 12a	Criminal Age of Pending Caseload (Felonies and Misdemeanors)	...15
Table 12b	Criminal Age of Pending Caseload in Days (Felonies and Misdemeanors)	...15
Table 12c	Superior Court Criminal (Felonies and Misdemeanors) Disposition Activity	...16



District Court

Table 13	Civil Caseload Inventory-Change in Pending Number and Percent; Chart 5 Civil Pending Inventory	...18
Table 14	Civil Caseload Inventory-Disposed Cases as a Percent of Filings; End Pending as a Percent of Filings	...19
Table 15	Civil Caseload-Manner of Disposition; Chart 6 Civil Manner of Disposition	...20
Table 16	Civil Trend Analysis-Number and Percent Changes in Filings, Dispositions and Pending Cases 2005-2010 Chart 7 Trend Analysis for 2006-2010 General Civil/CVM Appeals	...21
Table 17	Domestic Relations Trend Analysis- Number & Percent Changes in Filings, Dispositions & Pending Cases 2006-2010; Chart 8 Trend Analysis for 2006-2010 Domestic Relations	...22
Table 18	Age of Pending Caseload 2006-2010 - General Civil/CVM Appeals; Chart 9 Age of District Court Pending Caseload	...23
Table 19	Age of Pending Caseload 2006-2010 - Domestic Relations; Chart 10 Age of Pending Domestic Relations Caseload	...24
Table 20A	Ranking of TCA Districts by Age of Pending Caseload-General Civil/CVM Appeals	...25
Table 20B	Ranking of TCA Districts by Age of Pending Caseload-Domestic Relations	...26
<hr/>		
Table 21	Criminal Caseload Inventory-Change in Pending Number and Percent	...28
Table 22	Criminal Caseload Inventory-Disposed Cases as a Percent of Filings	...28
Table 23	District Court Clearance Rate (Non-Motor Vehicle) Adjusted For Absconded Defendants	...29
Table 24	Criminal Caseload Manner of Disposition; Chart 11 Criminal Manner of Disposition	...30
<hr/>		
Table 25	Criminal Trend Analysis-Number and Percent Changes in Filings and Dispositions 2006-2010	...31
Chart 12	MeckTraffic Tickets - Number of Visits to Website	...32
Chart 13	Number of Tickets Amended Through MeckTraffic Tickets Website	...33
Chart 15	Mecklenburg County S.T.E.P. Court Programs-Number of Persons Served FY09-10	...35
Chart 16	Mecklenburg County S.T.E.P Court Programs - Retention and Completion Rates	...36

Superior Court Civil

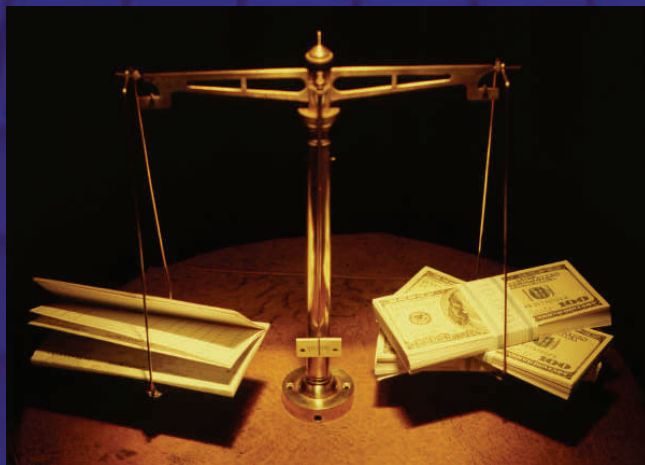
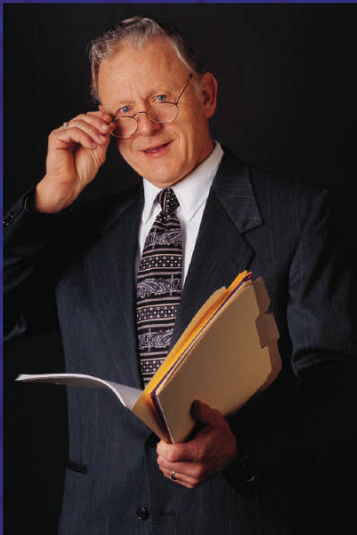


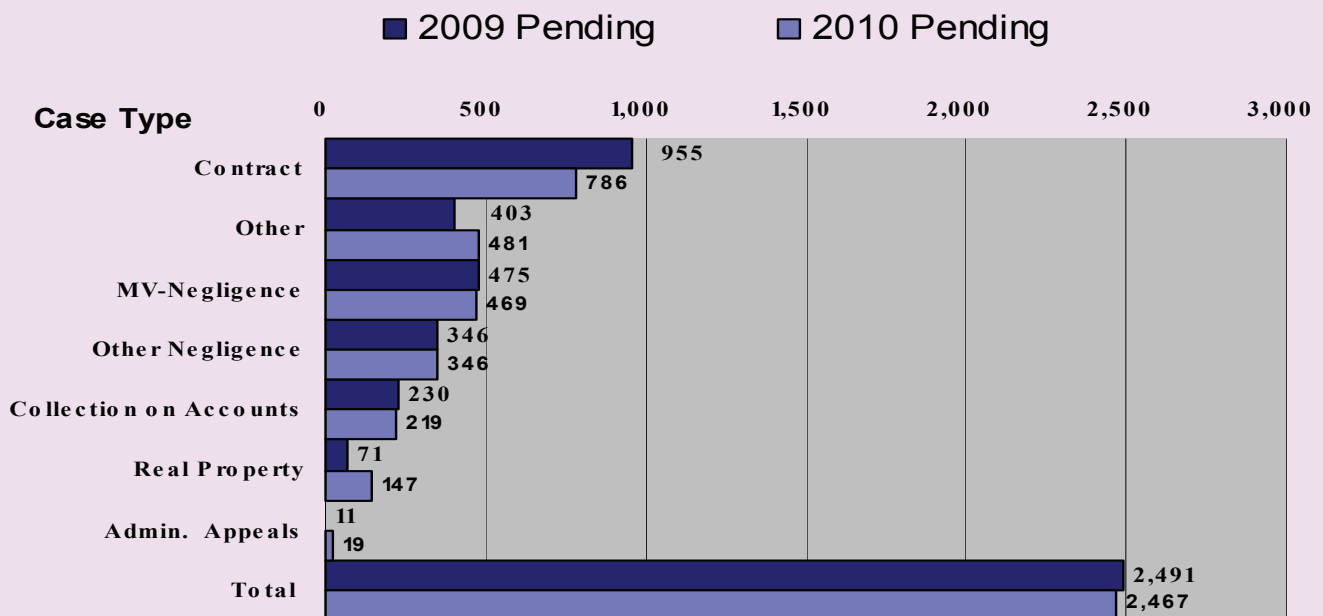
Table 1
Superior Court Civil Caseload Inventory
Change in Pending Number and Percent

Case Type	Begin Pending	Number Filed	Number Disposed	End Pending	Change In Pending Cases	
					Number	Percent
Contract	955	1,294	1,463	786	-169	-17.7%
Collection on Accounts	230	407	418	219	-11	-4.8%
MV-Negligence	475	682	688	469	-6	-1.3%
Other Negligence	346	393	393	346	0	0.0%
Real Property	71	149	73	147	76	107.0%
Admin. Appeals	11	42	34	19	8	72.7%
Other	403	1,109	1,031	481	78	19.4%
Total	2,491*	4,076	4,100	2,467	-24	-1.0%

The change in pending cases from the beginning to end of FY 09-10 indicates whether the Court is disposing of cases as quickly as they are filed; and if not, at what rate the court is falling behind. Table 1 and Chart 1 demonstrate that because the number of cases disposed were more than the number of cases filed during FY 09-10, the number of pending cases decreased overall by 24 cases, or 1.0%.

**This number adjusted since publication of FY08-09 statistical report*

Chart 1
Superior Court Civil - Pending Inventory



**Table 2 Superior Court Civil Caseload Inventory
Disposed Cases as a Percent of Filings End Pending as a Percent of Filings**

Case Type	Number Filed	Number Disposed	End Pending	Disposed Cases as % of Filings	End Pending Cases as % of Filings
Contract	1,294	1,463	786	113.1%	60.7%
Collection On Accounts	407	418	219	102.7%	53.8%
MV-Negligence	682	688	469	100.9%	68.8%
Other Negligence	393	393	346	100.0%	88.0%
Real Property	149	73	147	49.0%	98.7%
Admin. Appeal	42	34	19	81.0%	45.2%
Other	1,109	1,031	481	93.0%	43.4%
Total Superior Court Caseload	4,076	4,100	2,467	100.6%	60.5%

Another method of determining how well the Superior Court is managing its caseload is by studying the number of disposed cases as a percentage of filings and the number of pending cases as a percentage of filings. The Court is managing its caseload effectively if disposed cases comprise a large percentage of filings and if pending cases comprise a low percentage of filings. For FY 09-10, the district's disposed cases comprised 100.6% of filings and pending cases comprised 60.5%. This is compared to FY 08-09 when disposed cases comprised 91.10% of filings and pending made up 58.2 %

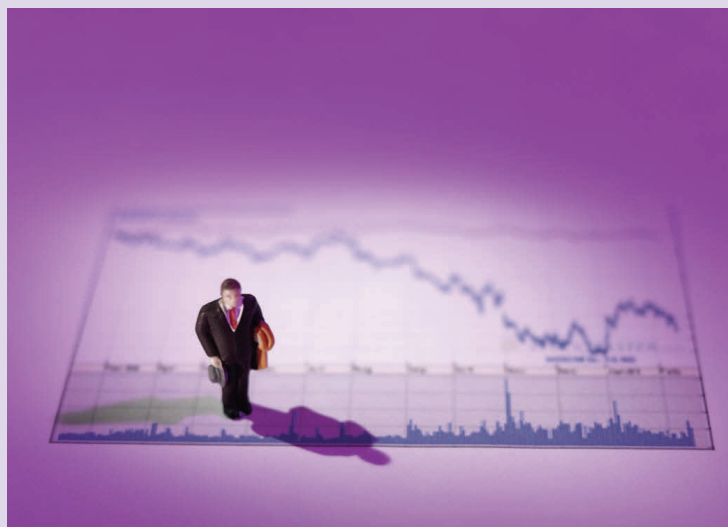


Table 3
Superior Court Civil Caseload
Manner of Disposition

Disposition Method	Number Disposed	Percentage Disposed
Trial by Jury	41	1.0%
Trial by Judge	868	21.2%
Voluntary Dismissal	1,714	41.8%
Final Order or Judgment w/o Trial	90	2.2%
Clerk	705	17.2%
Dismiss - Motion of the Court	84	2.0%
Discontinuance for Lack of Service	327	8.0%
Other	271	6.6%
Total	4,100	100.0%

Table 3 shows the manner in which the Superior Court's civil cases were disposed.

Chart 2
Superior Court Civil - Manner of Disposition

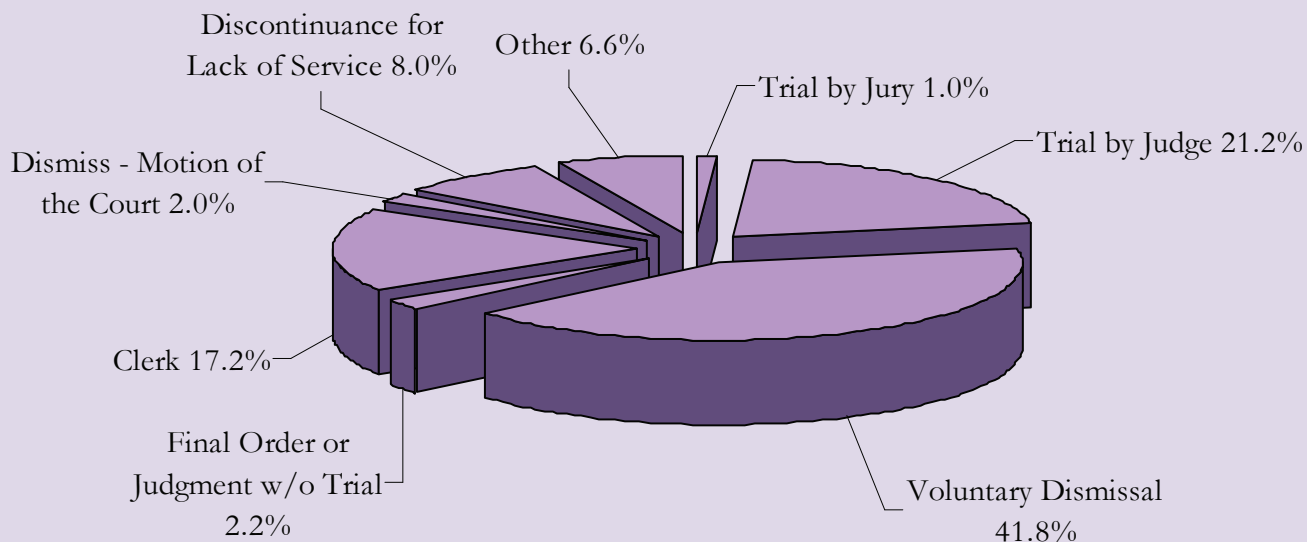


Table 4
Superior Court Civil Trend Analysis
Number & Percent Changes in Filings, Dispositions, & Pending Cases

	Cases Filed		Disposed		Pending	
	#	%	#	%	#	%
2006	3,598	-	3,792	-	2,289	-
2007	3,389	-5.8	3,681	-2.9	1,982	-13.4
2008	3,609	6.5	3,392	-7.9	2,177	9.8
2009	4,301	19.2	3,962	16.8	2,502	14.9
2010	4,076	-5.2	4,100	3.5	2,467	-1.4
2006-10	18,973	13.3	18,927	8.1	11,417*	7.8

*In order for the court to maintain effective case management, it must dispose of cases at least at the same rate as cases are being filed. The number of Superior Court cases filed in the 26th Judicial District decreased in FY 09-10 compared to FY 08-09. The number of cases disposed in FY 09-10 were greater than the number of cases filed. *This number adjusted since publication of FY08-09 statistical report.*

Chart 3
Superior Court Civil Trend Analysis

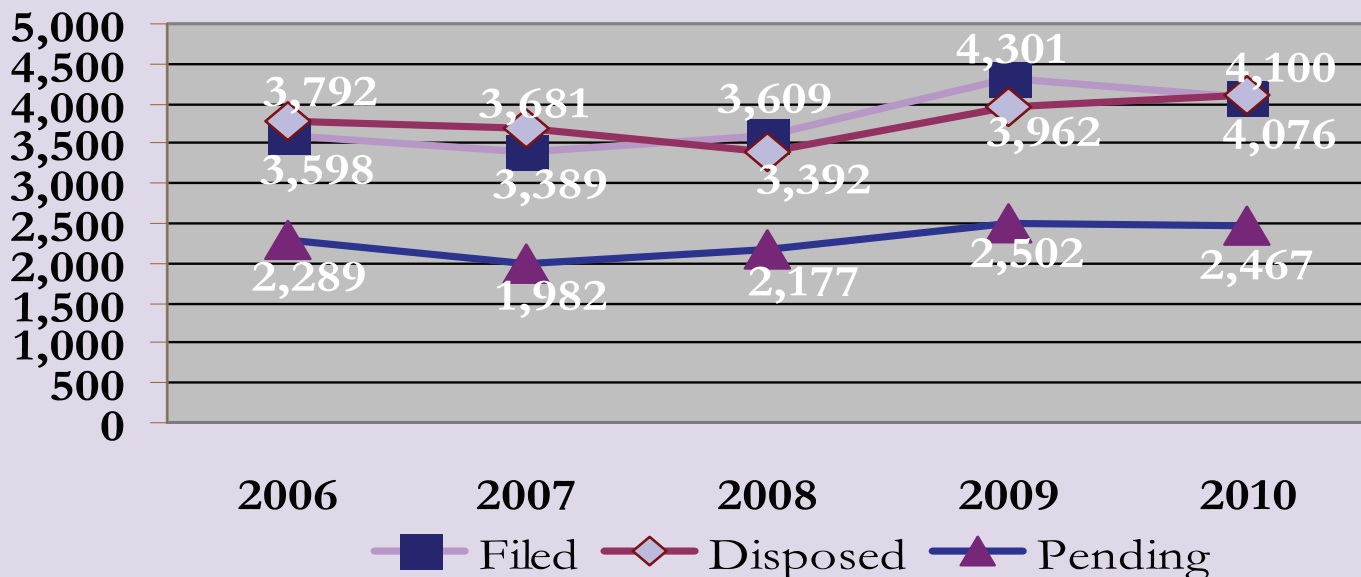


Table 5
Superior Court Civil Trend Analysis
Age of Pending Caseload

Year	Total Pending #	< 1 Year		1 - 2 Years		> 2 Years		In Days	
		#	%	#	%	#	%	Avg. Age	Median Age
2006	2,289	1,919	83.8	320	14.0	50	2.2	210.7	149.0
2007	1,982	1,714	86.5	220	11.1	48	2.4	189.5	131.0
2008	2,177	1,956	89.8	23	1.1	23	1.1	157.5	108.0
2009	2,502	2,229	89.1	231	9.2	42	1.7	170.3	117.0
2010	2467	2109	85.5	309	12.5	49	2.0	196.0	139.0

According to American Bar Association (ABA) standards, 90% of all civil cases should be settled, tried or otherwise concluded within twelve months of the date of filing, 98% within eighteen months of filing, and the remainder within two years of filing.

For FY 09-10, the 26th Judicial District experienced a slight increase in the number of cases pending at the two year mark. The average and median age of cases has experienced an increase.

Chart 4
Superior Court Civil Trend Analysis
Age of Pending Caseload

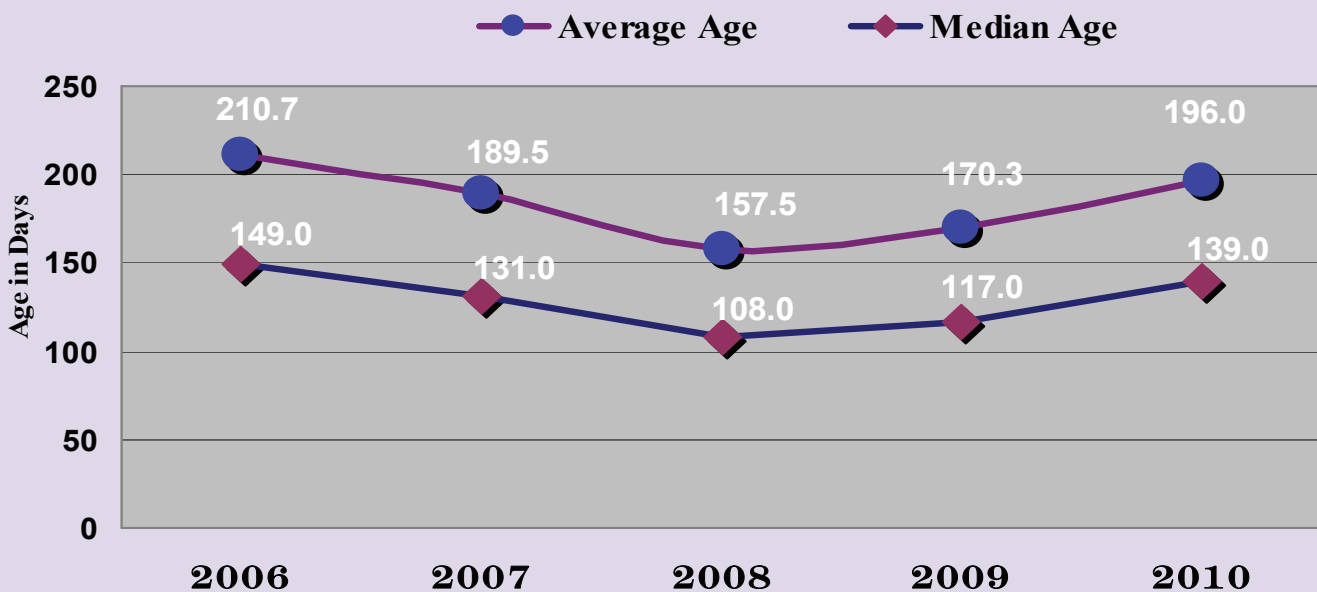


TABLE 6
*Superior Court Civil Ranking of Trial Court Administrator Districts
By Age of Pending Caseload*

TCA District	Total Pend-	TCA < 1 Year			1 - 2 Years			TCA > 2 Years			Avg. Age		Med Age	
		District	#	%	District	#	%	District	#	%	TCA District	In Days	TCA District	In
7A	155	29B	247	53.6	18	90	9.2	12	1	0.2	12	168.2	12	121.0
29A	193	3B	293	65.5	12	46	11.5	7A	1	0.7	18	170.2	7B	124.0
4A	211	10	1,872	69.2	7A	18	11.6	21	6	0.9	7A	192.8	18	124.0
4B	269	4A	151	71.6	26	309	12.5	18	10	1.1	26	196.0	26	139
7B	322	28	454	71.6	14	79	12.9	5	13	1.8	7B	198.6	21	150.5
27A	366	29A	139	72.0	7B	43	13.4	26	49	2.0	21	199.5	7A	160.0
12	401	27A	280	76.5	21	106	15.1	7B	8	2.4	5	213.1	5	171.5
3B	447	4B	211	78.4	5	118	16.6	4A	7	3.3	4B	250.3	14	173.0
29B	461	14	499	81.4	27A	61	16.7	4B	11	4.1	14	252.3	4B	184.0
14	613	5	581	81.6	4B	47	17.5	14	35	5.7	4A	255.1	29A	189.0
28	634	21	590	84.0	29A	40	20.7	27A	25	6.8	29A	266.0	27A	201.0
21	702	7B	271	84.2	28	134	21.1	28	46	7.3	27A	281.0	28	201.0
5	712	26	2,109	85.5	10	623	23.0	29A	14	7.3	28	292.0	4A	211.0
18	973	12	354	88.3	4A	53	25.1	10	211	7.8	10	321.4	10	211.0
26	2,467	18	873	89.7	3B	114	25.5	3B	40	9.0	3B	341.2	3B	237.0
10	2,706	7A	136	897.7	29B	125	27.1	29B	89	19.3	29B	527.4	29B	327.0

Table 6 reveals the ranking of Trial Court Administrator Districts throughout the state by age of pending caseload. The 26th Judicial District ranked 6th of 16 districts in FY 09-10 for percentage of cases over two years old, 4th for the average age of cases, and 4th for the median age of cases.



Superior Court Criminal

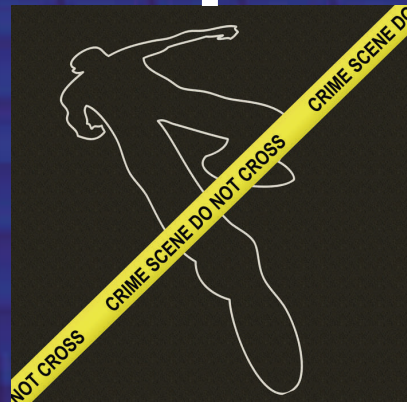


TABLE 7
Superior Court Criminal Caseload Inventory
Change in Pending Number and Percent

Case Type	Begin Pending	Number Filed	Number Disposed	End Pending	Change In Pending Number	Percent
Felonies	7,132*	10,041	9,750	7,423	291	4.1
Misdemeanors	2,769*	4,236	3,923	3,082	313	11.3

*The change in the number of pending cases from the beginning to the end of the fiscal year indicates whether the Court is disposing of cases as quickly as they are filed; and if not, at what rate the Court is falling behind. In FY 09-10, there were 291 more felony cases and 313 more misdemeanor cases pending at the end of the year. *This number adjusted since publication of FY08-09 annual statistical report.*

TABLE 8
Superior Court Criminal Caseload Inventory
Disposed Cases as a Percent of Filings
End Pending as a Percent of Filings

Case Type	Number Filed	Number Disposed	End Pending	Disposed Cases as a % of Filings	End Pending Cases as a % of Filings
Felonies	10,041	9,750	7,423	97.1	73.9
Misdemeanors	4,236	3,923	3,082	92.6	72.8

Another method of determining how well the Court is managing its caseload is by studying the number of cases disposed and the number of cases pending as percentages of the number of cases filed. The National Center for State Courts recommends a benchmark in which the number of cases disposed should equal at least 90% of the cases filed. The table above indicates the court exceeded this benchmark in FY 09-10 with 97.1 of felonies and 92.6% of misdemeanors disposed.

TABLE 9
Criminal Clearance Rate

Year	Dispositions	New Filings	Clearance Rate as %
2006	10,599	12,805	83%
2007	12,259	13,181	93%
2008	14,887	13,856	107%
2009	14,988	14,243	105%
2010	13,673	14,277	96%
2006-2010	66,406	68,362	97%

A clearance rate is the number of dispositions compared with the number of filings. This table reflects the clearance rate of felony cases.



TABLE 10
Superior Court Criminal Trend Analysis
Number & Percent Changes in Filings, Dispositions, & Pending Cases (Felonies)

	Filings		Dispositions		Pending	
	#	%	#	%	#	%
		Chg.		Chg.		Chg.
06	8,582	-	7,162	-	7,782	-
07	8,854	3.2	8,263	15.4	8,310	6.8
08	9,553	7.9	10,033	21.4	7,795	-6.2
09	10,077	5.5	10,630	6.0	7,188	-7.8
10	10,041	-0.4	9,750	-8.3	7,423	3.3
06-10	47,107	17.0	45,838	36.1	38,498	-4.6

TABLE 11
Superior Court Criminal Trend Analysis
Number & Percent Changes in Filings, Dispositions, & Pending Cases (Misdemeanors)

	Filings		Dispositions		Pending	
	#	%	#	%	#	%
		Chg.		Chg.		Chg.
06	4,223	-	3,437	-	3,322	-
07	4,327	2.5	3,996	16.3	3,630	9.3
08	4,303	-0.6	4,854	21.5	3,032	-16.5
09	4,166	-3.2	4,358	-10.2	2,805	-7.5
10	4,236	1.7	3,923	-10.0	3,082	9.9
06-10	21,255	0.3	20,568	14.1	15,871	-7.2

The number of cases disposed should keep pace with the number of cases filed.

Table 12a
Superior Court Criminal Felonies & Misdemeanors
Age of Pending Caseload

	Total #	< 90 Days		91-120 Days		121-180 Days		181-365 Days		1-2 Years		Over 2 Years	
		#	%	#	%	#	%	#	%	#	%	#	%
2006	10,599	2,361	22.3	687	6.5	1,640	15.5	3,696	34.9	1,756	16.6	474	4.5
2007	11,940	3,220	27.0	962	8.1	1,615	13.5	2,805	23.5	2,302	19.3	459	3.8
2008	10,827	3,203	29.6	867	8.0	1,729	16.0	2,756	25.5	1,547	14.3	725	6.7
2009	9,993	2,878	28.8	919	9.2	1,376	13.8	3,036	30.4	1,431	14.3	353	3.5
2010	10,505	3,471	33.0	970	9.2	1,291	12.3	2,487	23.7	1,914	18.2	373	3.6

The percentage of cases older than 2 years in age has increased by 3.6% over the last year.

The Supreme Court adopted standards which guide and are as follows:

Felonies

- 50% disposed within 120 days of indictment*
- 75% disposed within 180 days of indictment*
- 90% disposed within 365 days of indictment*
- 100% disposed within 545 days of indictment*

Non-Motor Vehicle Misdemeanors

- 75% disposed within 60 days of filing*
- 90% disposed within 90 days of filing*
- 98% disposed within 120 days of filing*
- 100 disposed within 365 days of filing*

Motor Vehicle Misdemeanors

- 75% disposed within 30 days of the first court appearance*
- 90% disposed within 90 days of the first court appearance*
- 100% disposed within 150 days of the first court appearance*

Table 12b
Superior Court Criminal Felonies & Misdemeanors
Age of Pending Caseload in days

	FELONIES		MISDEMEANORS	
	In Days		In Days	
	Average	Median	Average	Median
2006	255.4	171.0	252.7	177.0
2007	287.1	193.0	303.9	199.0
2008	253.9	174.0	255.3	154.0
2009	228.3	173.0	236.4	174.0
2010	230.9	156.0	233.6	161.0

Table 12c
Superior Court Criminal Felonies & Misdemeanors
Disposition Activity

FELONIES

	Total		Jury Trial			Guilty Plea		DA Dismissal				
	Filings	Disposed	Guilty	Not Guilty	Guilty Plea Prior Verdict	Lesser Offense	As Charged	After Def. Prosc	With Leave	W/o Leave	Other	Neg. Plea
2006	8,582	7,162	98	40	1	581	3,105	34	122	3,164	17	0
2007	8,854	8,263	109	38	4	668	3,476	10	94	3,821	43	0
2008	9,553	10,033	141	82	2	587	3,652	49	288	5,189	43	0
2009	10,077	10,630	154	63	1	498	4,031	37	318	5,488	40	0
2010	10,041	9,750	147	75	3	562	3,731	24	204	4,963	41	0

MISDEMEANORS

	Total		Jury Trial			Guilty Plea		DA Dismissal				
	Filings	Disposed	Guilty	Not Guilty	Guilty Plea Prior verdict	Lesser Offense	As Charged	After Def. Prosc	With Leave	W/o Leave	Other	Neg. Plea
2006	4,223	3,437	60	33	0	12	655	6	87	1,847	737	0
2007	13,181	12,259	166	59	9	683	4,344	11	167	5,975	845	1
2008	4,303	4,854	61	33	0	13	848	10	115	3,065	709	0
2009	4,166	4,358	96	47	0	6	669	6	126	2,783	625	0
2010	4,236	3,923	52	29	0	3	466	2	107	2,629	635	0

Table 12c demonstrates the disposition of felony and misdemeanor cases filed in the district over the last five year period.

District Court Civil



Table 13
District Court Civil Caseload Inventory
Change in Pending Number & Percent

Case Type	Begin Pending	Number Filed	Number Disposed	End Pending	Change In Pending Cases	
					Number	Percent
General Civil	4,123	10,770	12,112	2,781	-1,342	-32.5
CVM Appeals/Transfers	141	552	564	129	-12	-8.5
URESAs/UIFSA	2	19	20	1	-1	-50.0
IV-D	1,063	3,398	3,498	963	-100	-9.4
Child Support (Non-IV-D)	739	682	481	940	201	27.2
Dom Relations Non-Child	2,615	10,088	9,518	3,185	570	21.8
Total District Court Caseload	8,683*	25,509	26,193	7,999	-684	-7.9

The change in pending cases from the beginning to the end of FY 09-10 indicates whether the Court is disposing of cases as quickly as they are filed; and if not, at what rate the Court is falling behind. In FY 09-10, 25,509 civil cases were filed in District Court. This is compared with 24,554 filed in FY 08-09.

The largest filing increase is seen in the area of Domestic Relations Non-Child Support, which has increased from 9,369 in FY08-09 to 10,088. Table 13 illustrates that the court was able to keep pace with dispositions as cases were filed. The court experienced an overall 7.9% decrease in the District Court Civil pending caseload, as dispositions exceeded the number of filings. *This number adjusted since publication of the FY08-09 statistical report.

Chart 5
District Court Civil - Pending Inventory

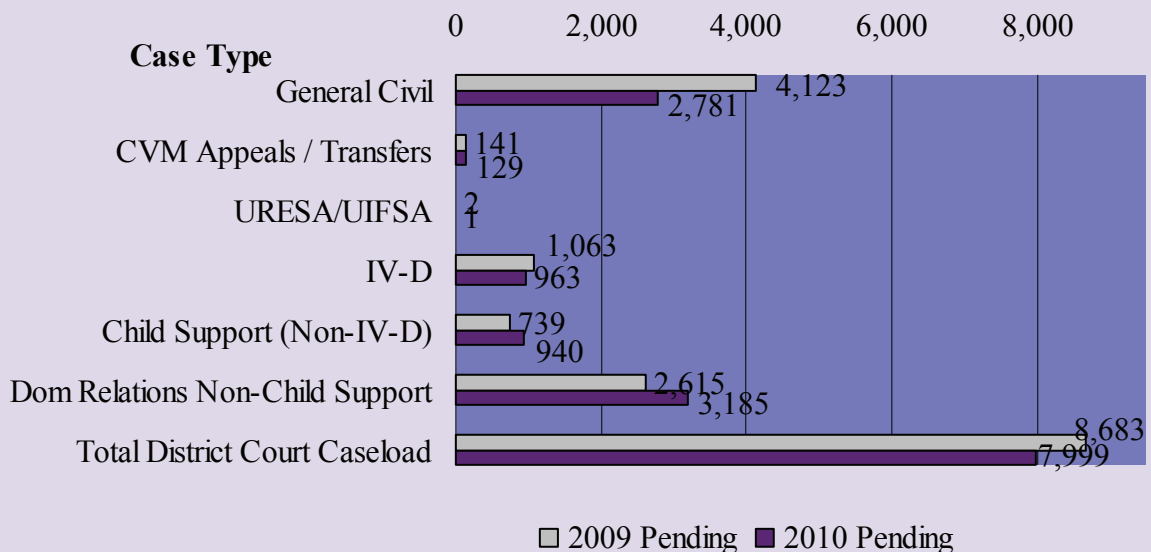


TABLE 14
District Court Civil Caseload Inventory
Disposed Cases as a Percent of Filings

Case Type	Number Filed	Number Disposed	End Pending	Disposed Cases as a % of Filings	End Pending Cases as a % of Filings
General Civil	10,770	12,112	2,781	112.5	25.8
CVM Appeals/Transfers	552	564	129	102.2	23.4
URES/UISA	19	20	1	105.3	5.3
IV-D	3,398	3,498	963	102.9	28.3
Child Support (non IV-D)	682	481	940	70.5	137.8
Domestic Relations Non-Child Support	10,088	9,518	3,185	94.3	31.6
Total District Court Caseload	25,509	26,193	7,999	102.7	31.4

Another method of determining how well the District Court is managing its caseload is by reviewing the number of disposed cases as a percentage of filings, and the number of pending cases as a percentage of filings. The Court is managing its caseload effectively if disposed cases comprise a large percentage of filings and if pending cases comprise a low percentage of filings.

According to the National Center for State Courts (NCSC), disposed cases should comprise at least 90% of cases filed. Table 14 illustrates that the 26th Judicial District accomplished this goal in all areas of the District Civil Caseload for FY 09-10, with the exception of Child Support (non-IV-D) which missed the mark by 19.5%.



TABLE 15
District Court Civil Caseload
Manner of Disposition

Disposition Method	General Civil		CVM Appeal/Transfer		URESAs/UIFSA		IV - D		Non IV - D		Domestic Relations Non-Child Support		Total District	
	#	%	#	%	#	%	#	%	#	%	#	%	#	%
Jury	16	0.1	0	0.0	0	0.0	0	0.0	0	0.0	0	0.0	16	0.1
Judge	1,154	9.5	333	59.0	6	30.0	1,585	45.3	131	27.2	1,501	15.8	4,710	18.0
Voluntary Dismissal	2,423	20.0	101	17.9	0	0.0	455	13.0	58	12.1	569	6.0	3,606	13.8
Final Order/Judgment w/o Trial	161	1.3	1	0.2	14	70.0	365	10.4	187	38.9	5,454	57.3	6,182	23.6
Clerk	5,268	43.5	118	20.9	0	0.0	0	0.0	1	0.2	1	0.0	5,388	20.6
Dismiss - Motion of the Court	334	2.8	8	1.4	0	0.0	148	4.2	23	4.8	1,244	13.1	1,757	6.7
Discont. for Lack of Service	2,628	21.7	0	0.0	0	0.0	943	27.0	51	10.6	707	7.4	4,329	16.5
Other	128	1.1	3	0.5	0	0.0	2	0.1	30	6.2	42	0.4	205	0.8
Total	12,112	100.0	564	100.0	20	100.0	3,498	100.0	481	100.0	9,518	100.0	26,193	100.0

Table 15 and Chart 6 show the manner in which cases are disposed. The calculated percentages are the percent of dispositions.

Chart 6
District Court Civil - Manner of Disposition

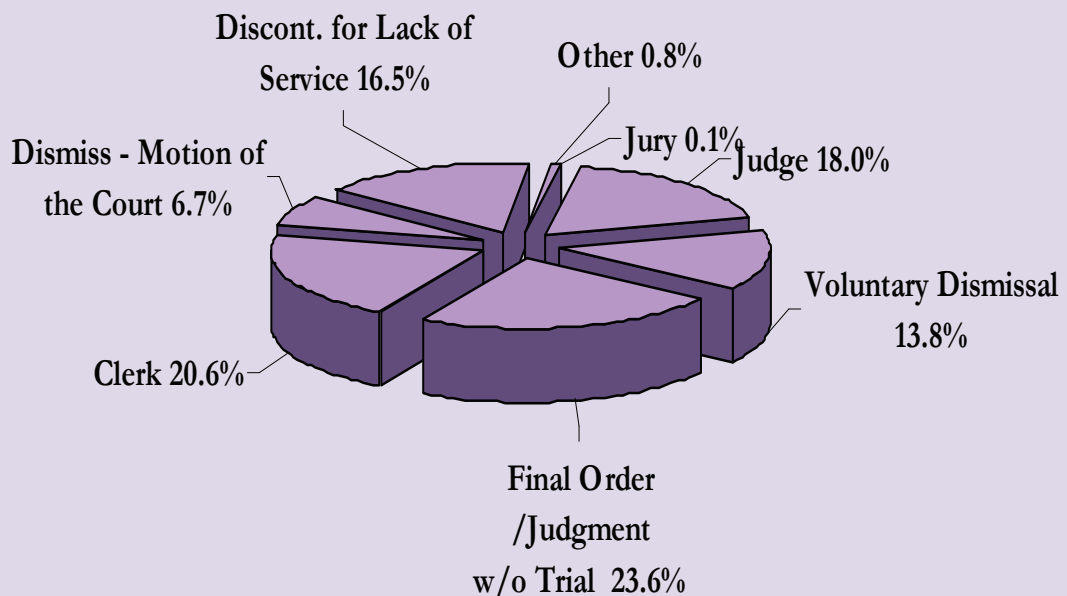


TABLE 16
District Court General Civil Trend Analysis
Number & Percent Changes in Filings, Dispositions, and Pending Cases

CIVIL/CVM APPEALS/TRANSFERS

	FILED		DISPOSED		PENDING	
	#	%	#	%	#	%
06	7,855	-	7,200	-	3,026	-
07	8,396	6.9	8,203	13.9	3,208	6.0
08	10,971	30.7	9,668	17.9	4,478	39.6
09	11,217	2.2	11,384	17.7	4,278	-4.5
10	11,322	0.9	12,676	11.3	2,910	-32.0
06-10	49,761	44.1	49,131	76.1	17,900	-3.8

Table 16 and Chart 7 offer a trend analysis for filings, dispositions and pending caseloads in General Civil District Court from 2006-2010. Areas to look for are increases in filings coupled with decreases in dispositions. This indicates that the Court is falling behind in its workload and that a noticeable increase in the pending caseload will result. If dispositions fail to rise at the same rate as filings, the same situation will occur.

The table above reveals that the dispositions exceeded filings, which resulted in a 32.0% decrease in the pending caseload over last year.

Chart 7
District Court Trend Analysis
General Civil / CVM Appeals

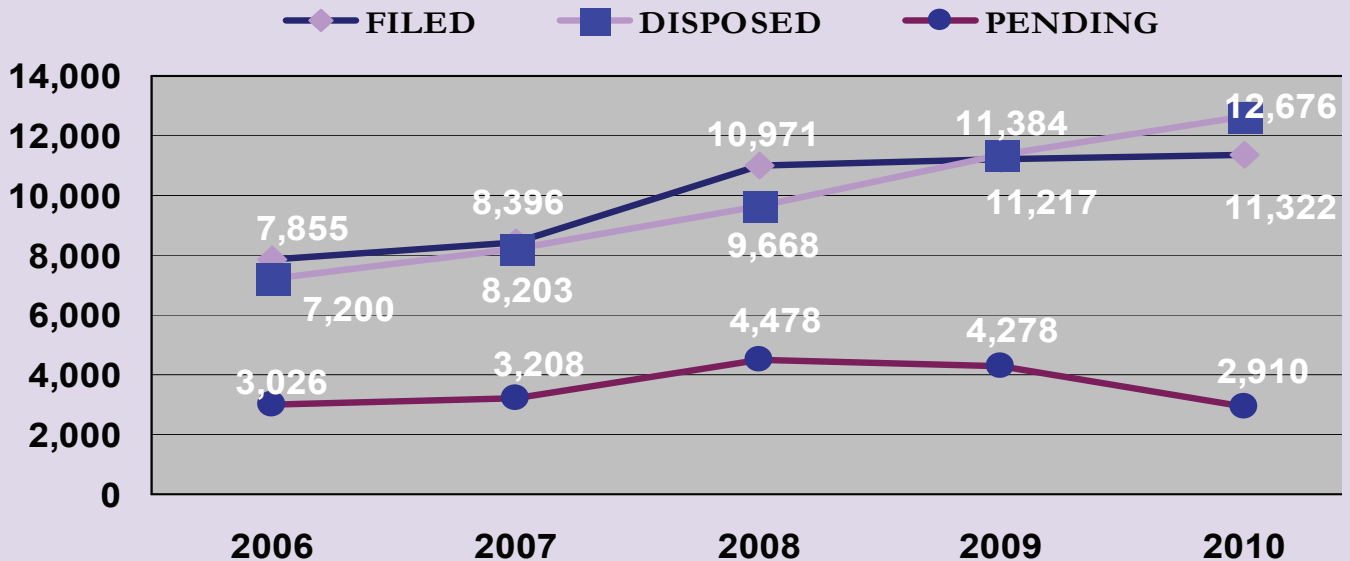


TABLE 17
District Court Domestic Relations Trend Analysis
Number & Percent Changes in Filings, Dispositions, & Pending Cases

	FILED		DISPOSED		PENDING	
	#	%	#	%	#	%
2006	12,716	-	12,453	-	5,333	-
2007	12,845	1.0	12,503	0.4	5,082	-4.7
2008	13,121	2.1	13,164	5.3	4,737	-6.8
2009	13,253	1.0	13,170	0.0	5,654	19.4
2010	14,187	7.0	13,517	2.6	5,089	-10.0
06-10	66,122	11.6	64,807	8.5	25,895	-4.6

Table 17 and Chart 8 offer a trend analysis for filings, dispositions, and pending caseloads in District Court, Domestic Relations, from 2006-2010. Areas to look for are increases in filings coupled with decreases in dispositions. This indicates that the Court is falling behind in its workload and that a noticeable increase in the pending caseload will result. If dispositions fail to rise at the same rate as filings, the same situation will occur. The number of cases pending for FY09-10 experienced 10.0 % decrease. The trend analysis above reveals that the overall pending caseload for Domestic Relations has decreased over the past five years by 4.6%.

Chart 8
District Court Trend Analysis
Domestic Relations

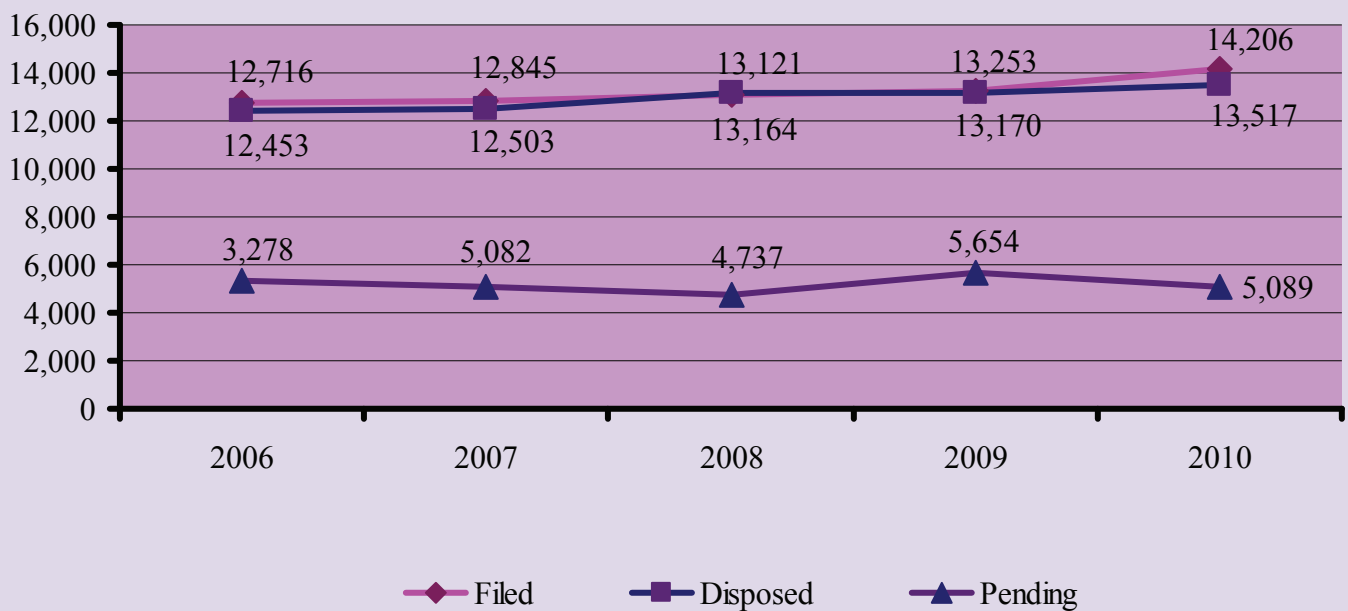


TABLE 18
Age of District Court General Civil /CVM Appeals
Pending Caseload

Year	Total Pending #	< 9 Mos		9 -18 Mos		> 18 Mos		Age In Days	
		#	%	#	%	#	%	Average	Median
2006	3,026	2,744	90.7	255	8.4	7	0.2	115.2	81.0
2007	3,208	2,898	90.3	277	8.6	33	1.0	110.2	72.0
2008	4,478	4,155	92.8	308	6.9	15	0.3	107.1	81.0
2009	4,278	3,925	91.7	350	8.2	3	0.1	105.1	82.0
2010	2,910	2639	90.7	262	9.0	9	0.3	103.8	82.0

For General Civil cases, our target is to dispose of 90% within 12 months of the date filed; 98% within 18 months of date filed; and 100% within 24 months. In the 26th Judicial District, the percentage of pending cases older than 18 months has steadily declined from 16% in 1994 to 0.3% during this fiscal year, which is only a 0.2 % increase since last year.

Chart 9
Age of District Court General/CVM Appeals Pending Caseload

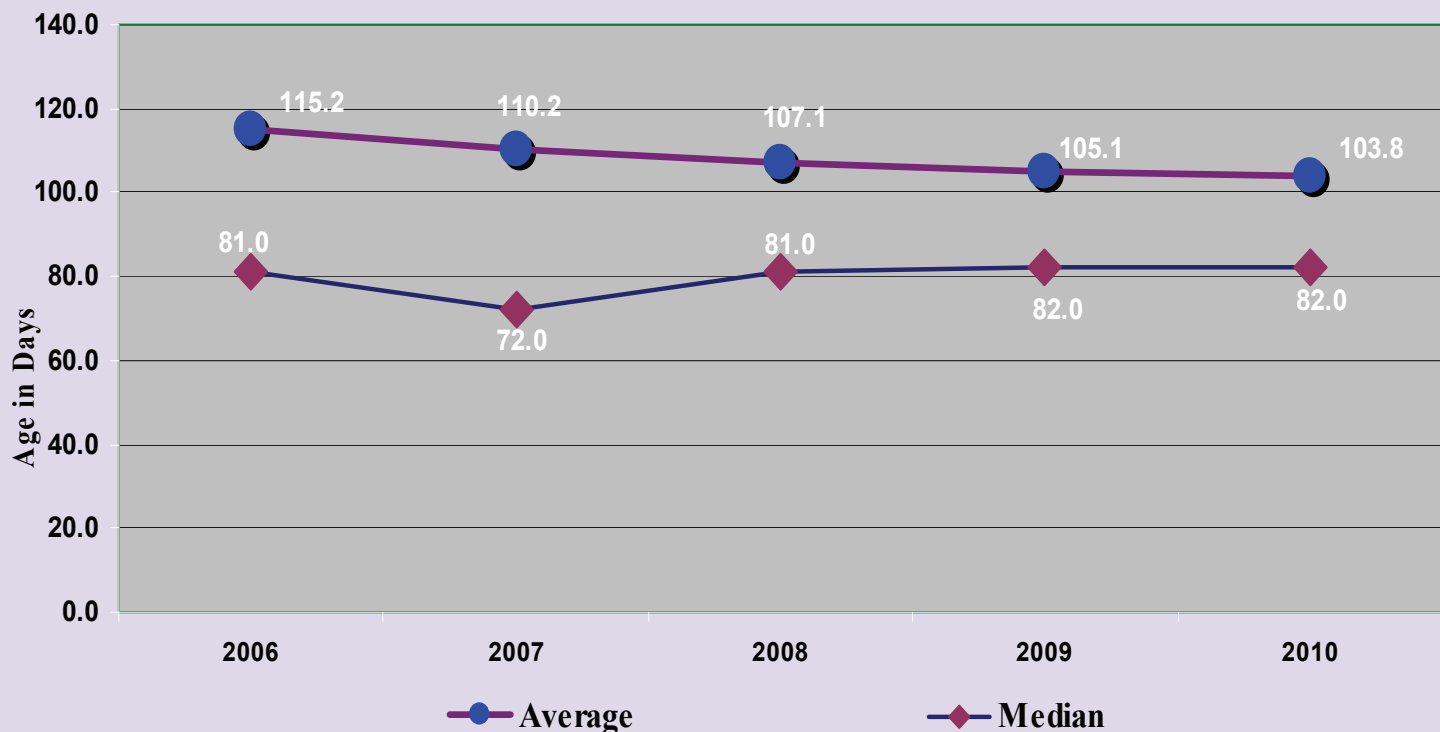


TABLE 19
Age of District Court Pending Domestic Relations Caseload

Year	Pending #	< 6 Mos.		6 -12 Mos.		> 1 Year		In Days	
		#	%	#	%	#	%	Average	Median
2006	5,333	2,987	56.0	576	10.8	1,770	33.2	313.1	129.0
2007	5,082	2,883	56.7	737	14.5	1,462	28.8	309.4	135.0
2008	4,737	2,931	61.9	812	17.1	994	21.0	217.5	112.0
2009	4,654	3,078	66.1	792	17.0	784	16.8	190.3	96.0
2010	5,089	2,986	58.7	854	16.8	1249	24.5	236.3	117.0

In FY 09-10, this district's pending caseload greater than one year for domestic relations cases increased from 16.8% to 24.5%. Comparing FY 08-09 to FY 09-10, there was also an increase in the average age and the median age.

Time standards have also been established specifically for the Family Courts of North Carolina. They are as follows:

Permanent Alimony and Equitable Distribution: 90% of cases disposed within 270 days after filing, remainder within 365 days.

Support: Temporary Orders in 90% of cases within 30 days after filing; 100% within 45 days. Permanent Orders in 75% of cases within 90 days of service; in 90% within 180 days of service; and in 100% of cases within 270 days of service.

Post Separation Support: Orders in 75% of cases within 60 days of filing, in 100% within 90 days of filing.

Custody: Temporary Order in 90% of cases within 30 days; in 100% of cases within 45 days. Trial completed in 90% of cases within 150 days, in 100% within 180 days.

Chart 10
Age of District Court Pending - Domestic Relations Caseload

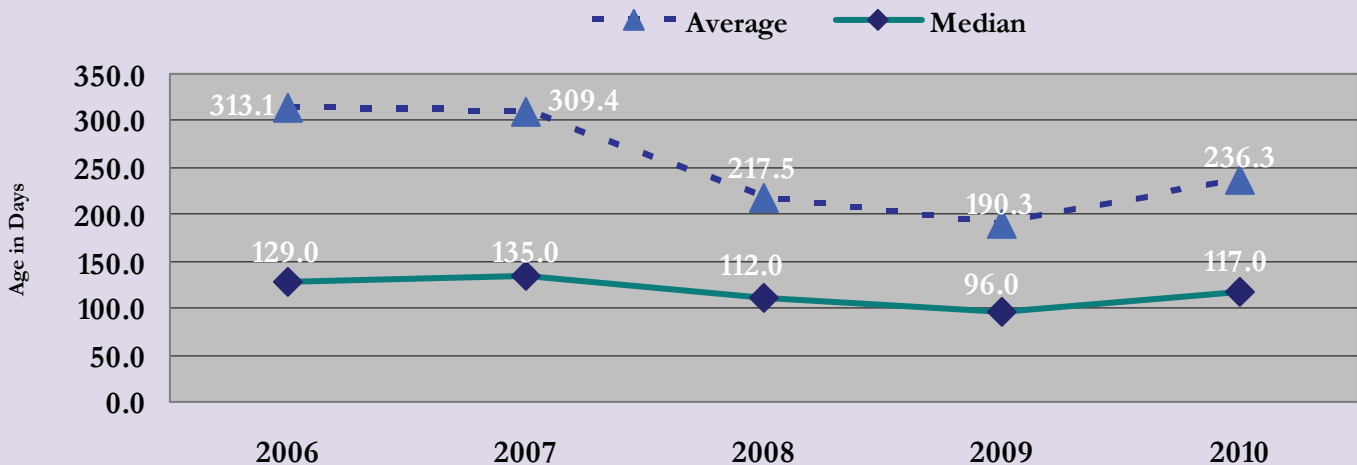


TABLE 20A
District Court Ranking of Trial Court Administrator Districts
General Civil

TCA District	<9 Mos.		TCA District	9-18 Mos.		TCA District	>18 Mos.		TCA District	Average Age In Days	TCA District	Median Age In Days
	#	%		#	%		#	%				
3B	364	32.6	12	5	1.1	12	0	0.0	12	76	12	68.0
7	570	41.9	26	262	9.0	5	2	0.2	26	103.8	26	82.0
18	1,452	52.0	29A	47	16.7	26	9	0.3	29A	142	29A	84.5
28	652	53.3	14	173	18.9	27A	58	0.4	5	156.5	14	104.0
10	3,182	62.1	7	296	21.7	21	35	2.5	27A	165.4	21	119.0
4	549	63.8	3B	261	23.4	29A	8	2.8	21	169.1	5	124.5
29B	315	65.6	5	234	25.1	28	3	4.8	29B	211	27A	128.0
27A	528	70.2	21	349	25.3	29B	24	5.0	4	214.2	4	141.0
21	996	72.2	4	243	28.2	14	64	7.0	14	216.7	29B	152.5
14	678	74.1	10	1471	28.7	4	69	8.0	28	222.1	10	162.0
5	696	74.7	27A	221	29.4	10	472	9.2	10	230.7	28	226.0
29A	227	80.5	29B	141	29.4	18	481	17.3	18	305	18	250.0
26	2,639	90.7	18	857	30.7	7	496	36.4	7	538.9	7	332.5
12	460	98.9	28	513	41.9	3B	492	44.0	3B	713.9	3B	426.0
State	13,308	64.6	State	5,073	24.6	State	2,213	10.8	State	252.6	State	142.0

Despite managing the largest volume in the state, the age of the general civil caseload continues to be among the lowest in the state.

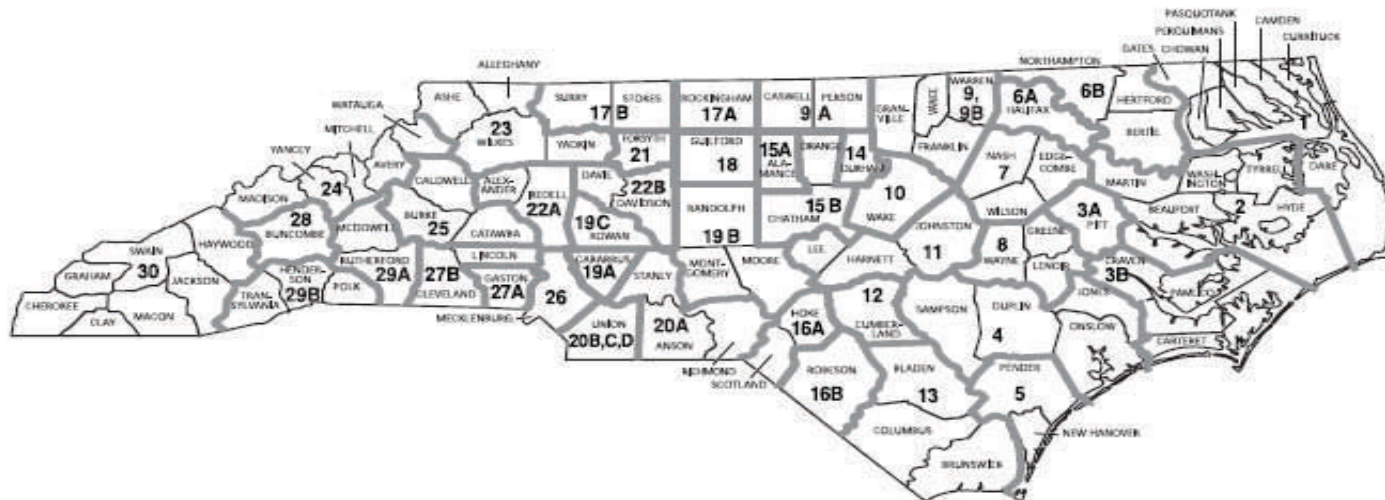


TABLE 20B
District Court Ranking of Trial Court Administrator Districts
By Age of Pending Domestic Relations Caseload

TCA District	Total Pending #	TCA District	< 6 Mos #	%	TCA District	6 TO 12 Mos #	%	TCA District	> 12 Mos #	%	TCA District	Average Age In Days	TCA District	Median Age In Days
29A	377	3B	586	20.2	3B	253	8.7	14	36	4.9	28	114.0	14	55.0
29B	681	27A	664	30.5	14	73	10.0	28	53	6.2	14	116.6	28	61.0
14	730	18	1,350	34.6	28	89	10.5	12	272	11.3	12	148.8	21	70.0
28	848	7	784	40.2	29A	40	10.6	21	160	11.7	5	162.1	12	72.0
5	985	29B	309	45.4	7	214	11.0	5	118	11.9	21	163.0	29A	79.0
21	1,364	10	1,740	58.6	18	492	12.6	29A	60	15.9	29A	195.2	5	85.0
4	1,808	26	2,986	58.7	10	386	13.0	4	385	21.3	4	208.5	4	111.0
7	1,948	4	1,130	62.5	12	329	13.7	26	1,249	24.5	26	236.3	10	111.0
27A	2,178	5	696	70.7	27A	351	16.1	10	843	28.4	29B	329.3	26	117.0
12	2,401	21	983	72.1	4	293	16.2	29B	254	37.3	27A	496.4	29B	236.0
3B	2,906	29A	277	73.5	21	221	16.2	7	950	48.8	7	570.2	7	337.0
10	2,969	12	1,800	75.0	26	854	16.8	18	2,060	52.8	18	662.8	18	407.5
18	3,902	28	706	83.3	29B	118	17.3	27A	1,163	53.4	10	682.4	27A	412.0
26	5,089	14	621	85.1	5	171	17.4	3B	2,067	71.1	3B	1,378.4	3B	944.5
State	28,186	State	14,632	51.9	State	3,884	13.8	State	9,670	34.3	State	482.8	State	164.0

Table 20b compares the age of pending Domestic Relations cases in TCA Districts located throughout the state.

North Carolina District Court Districts
Effective January 15, 2009



Note: Districts 9 and 9B, and districts 20B, 20C, and 20D are districts for electoral purposes only. They are combined for administrative purposes.

Copyright © 2009
 School of Government
 The University of North Carolina at Chapel Hill

District Court Criminal



TABLE 21
District Court Criminal Caseload Inventory
Change in Pending Number & Percent

Case Type	Begin Pending	Number Filed	Number Disposed	End Pending	Change In Pending Number	Percent
CR (Non-Motor Vehicle)	17,207	56,644	56,628	17,223	16	0.1

The District Court disposed of 56,628 non-motor vehicle criminal cases in FY 09-10 leaving the court with a pending caseload of 17,223.

TABLE 22
District Court Criminal Caseload Inventory
Disposed Cases as a Percent of Filings

Case Type	Number Filed	Number Disposed	Disposed Cases as a % of Filings
Motor Vehicles	124,510	124,572	100.0
Non-Motor Vehicle	56,644	56,628	100.0
Infractions	43,793	43,330	98.9

The Disposed Cases as a Percentage of Filing for Motor Vehicles, Non-Motor Vehicles and Infractions in FY 09-10 were 100%, 100% and 98.9%, respectively. Filings slightly exceeded dispositions in the Non-Motor Vehicles and infractions category.



*Table 23
District Court Clearance Rate (Non-Motor Vehicle)*

Year	Dispositions	New Filings	Clearance Rate as %
2006	54,615	51,630	106%
2007	54,748	54,997	100%
2008	52,977	52,798	100%
2009	56,593	56,030	101%
2010	56,628	56,644	100%
2006-10	275,561	272,099	101%

A clearance rate is the number of dispositions compared with the number of filings. This table reflects the clearance rate of non-motor vehicle cases.



TABLE 24
District Court Criminal Caseload Inventory
Manner of Disposition

Disposition Method	Number Disposed	Percentage Disposed
Worthless Check Waiver	4	0.0
Guilty Plea Before Magistrate	8	0.0
Guilty Plea/No Contest	9,685	17.1
Trial (Guilty Verdict)	754	1.3
Trial (Not Guilty Verdict)	405	0.7
Dismissal After Deferred Prosecution	386	0.7
Dismissal With Leave	1,943	3.4
Dismissal Without Leave	30,827	54.4
Heard and Bound Over	3	0.0
Probable Cause Not Found	6	0.0
Probable Cause Waived	3,237	5.7
Superseding Indictment	7,809	13.8
Other	1,561	2.8
Total	56,628	100.0

Chart 11
District Court Criminal Caseload Manner of Disposition

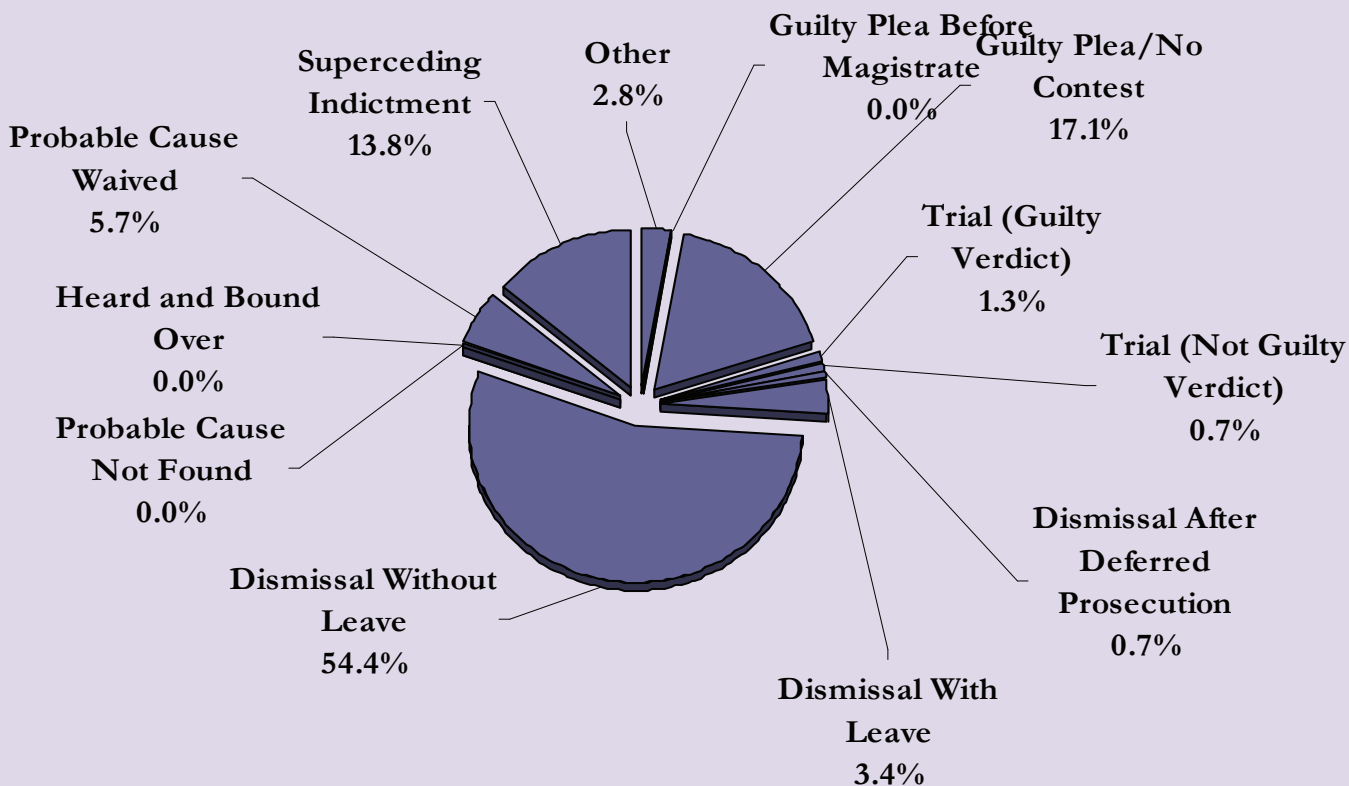


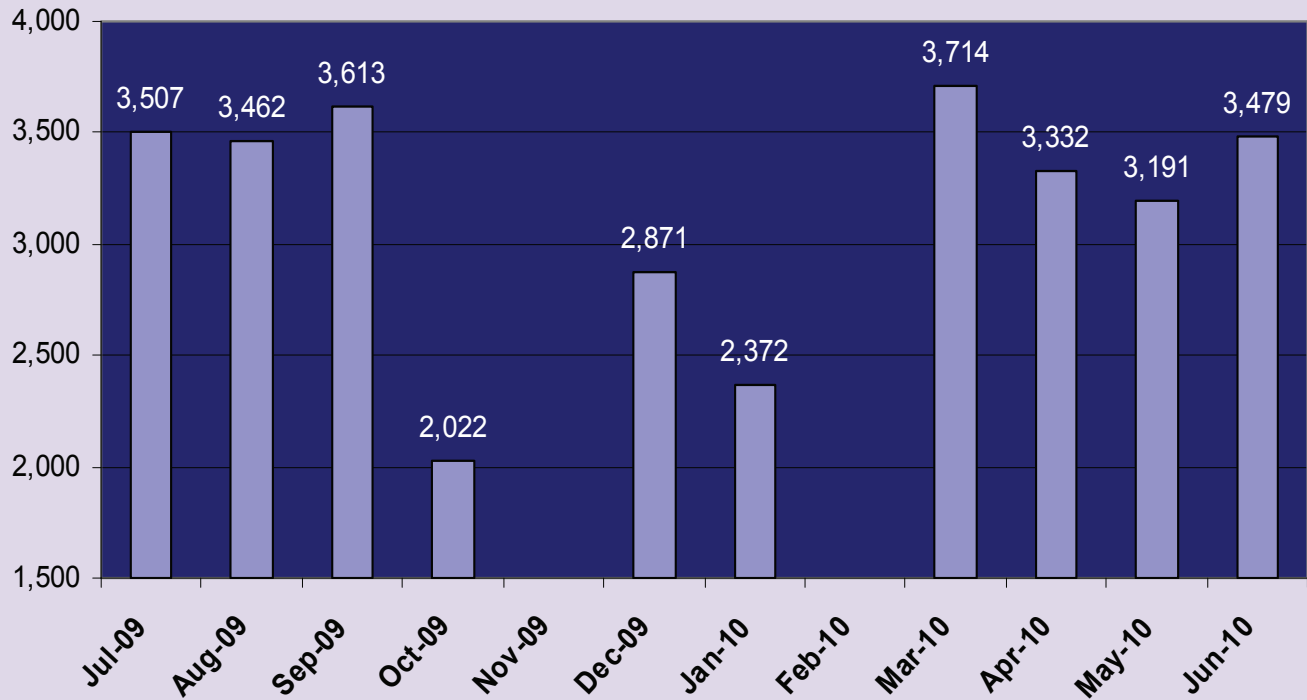
TABLE 25
District Court Trend Analysis
Number & Percent Changes in Filings & Dispositions

Case Type	Filings						Dispositions					
	2006	2007	2008	2009	2010	2006-10	2006	2007	2008	2009	2010	2006-10
Motor Vehicle	85,883	100,996	100,398	115,149	124,510	526,936	84,809	100,494	100,311	113,785	124,572	523,971
% Change	0.0	17.6	-0.6	14.7	8.1	45.0	0.0	18.5	-0.2	13.4	9.5	46.9
Non Motor Vehicle	51,360	54,997	52,798	56,030	56,644	271,829	54,615	54,748	52,977	56,593	56,628	275,561
% Change	0.0	7.1	-4.0	6.1	1.1	10.3	0.0	0.2	-3.2	6.8	0.1	3.7
Infractions	49,466	57,420	55,742	46,992	43,793	253,413	49,046	56,782	57,561	49,401	43,330	256,120
% Change	0.0	16.1	-2.9	-15.7	-6.8	-11.5	0.0	15.8	1.4	-14.2	-12.3	-11.7
Total	186,709	213,413	208,938	218,171	224,947	1,052,178	188,470	212,024	210,849	219,779	224,530	1,055,652
% Change	0.0	14.3	-2.1	4.4	3.1	20.5	0.0	12.5	-0.6	4.2	2.2	19.1

There has been a 20.5% increase in District Court Criminal filings over the last five years, but despite a challenging environment, the number of cases disposed has outnumbered the amount filed for the last five years.



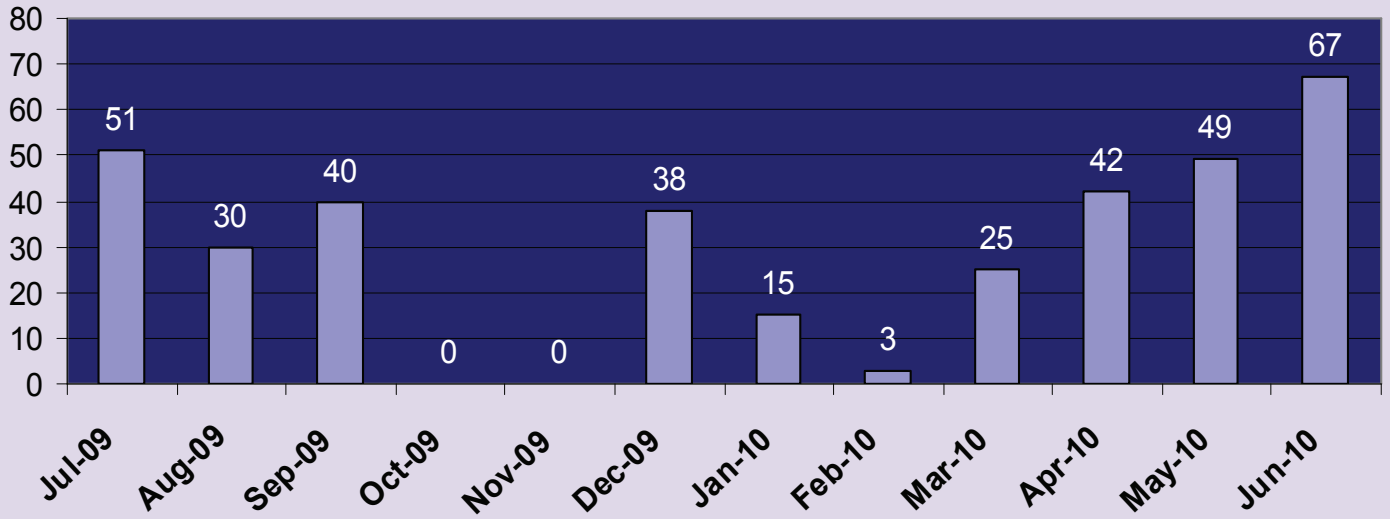
*Chart 12
MeckTrafficTickets
Number of Visits*



The chart above reflects the number of visits to the MeckTraffic Tickets website for FY09-10.



*Chart 13
Number of Tickets Amended Through MeckTraffic Tickets Website*



*Chart 14
Country of Origin for Visits to MeckTraffic Tickets Website*

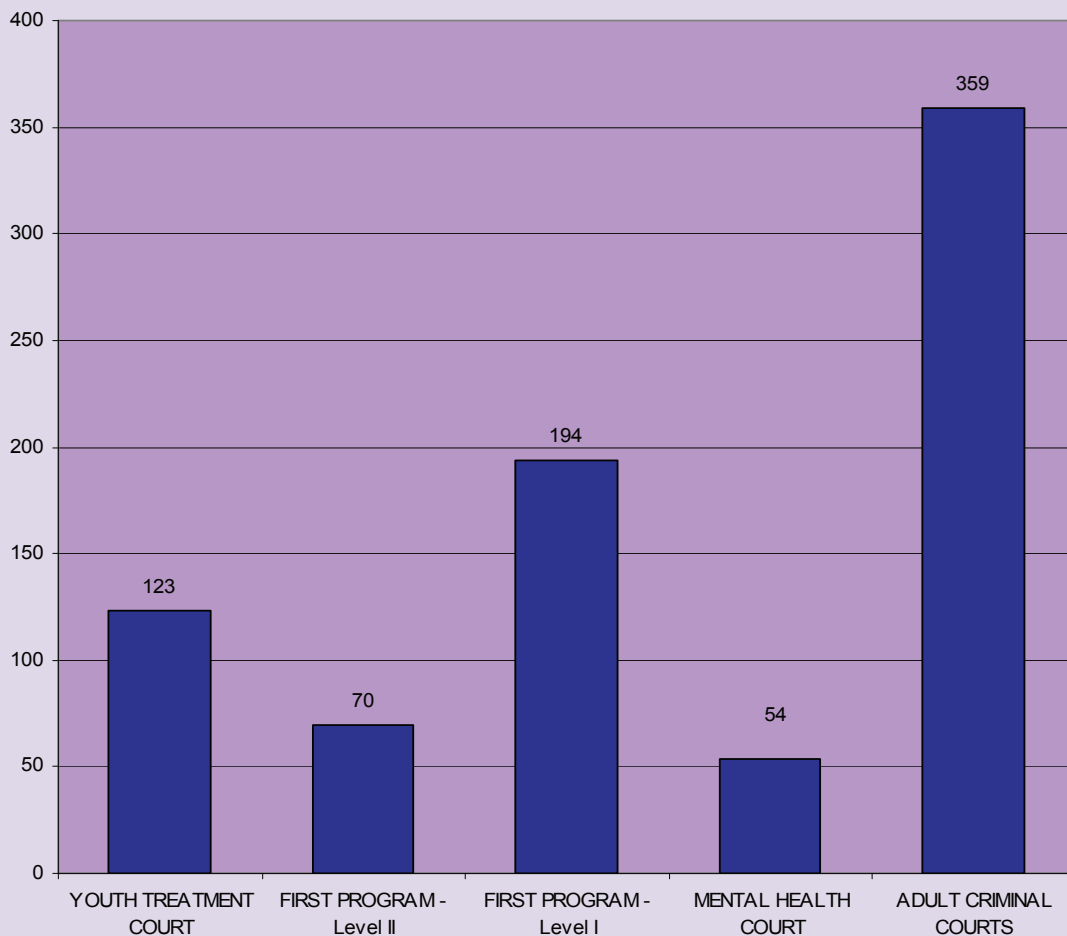
In order of frequency, the following countries are representative of those who have accessed the website link: United States (31,386), Canada, Mexico, Germany, United Kingdom, Bulgaria, Denmark, New Zealand, Dominican Republic, Puerto Rico, Honduras, Iraq, Switzerland, United Arab Emirates, Australia, Austria, Brazil, Chile, Colombia, Czech Republic, Ecuador, Hong Kong, Italy, Japan, Kuwait, Netherlands, Panama, Philippines, Portugal, South Korea, Thailand, Turkey, and Venezuela.



Drug Treatment Court



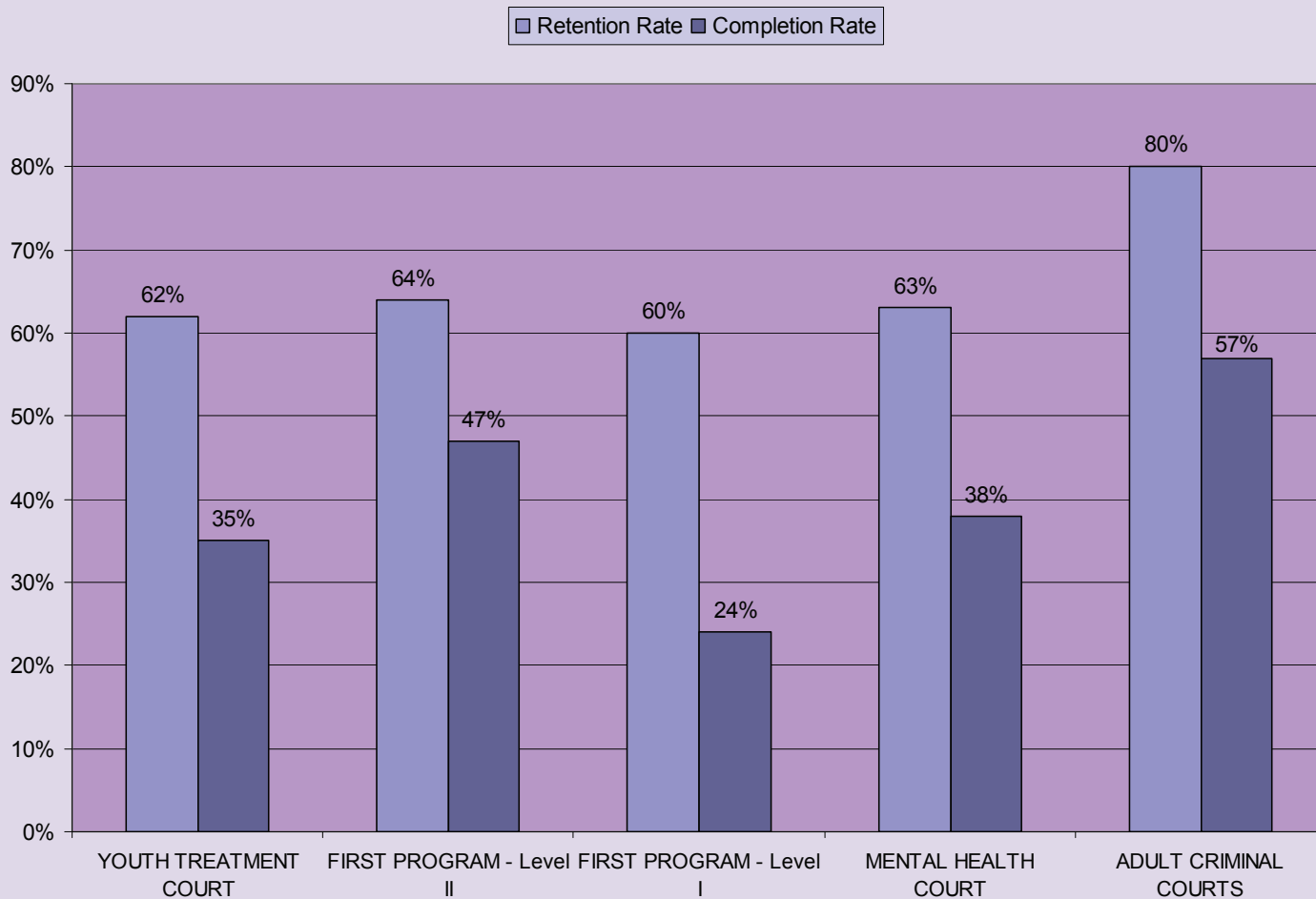
*Chart 15
Mecklenburg County S.T.E.P. Court Programs
Number of persons served FY 09-10*



The five Drug Treatment Court programs in Mecklenburg County served a total of 800 clients during FY09-10. This compared to FY08-09 where a total of 706 clients were served.



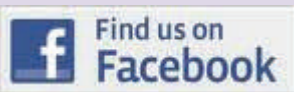
*Chart 16
Mecklenburg County S.T.E.P. Court programs
Retention and completion rates*



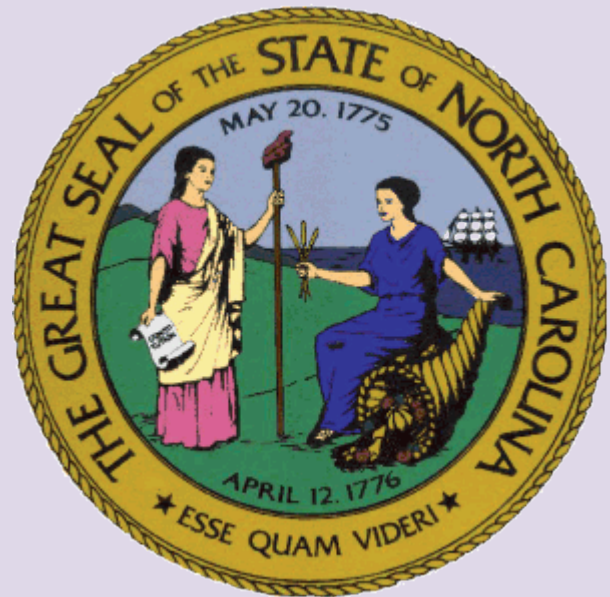
The chart above indicates that over half of the clients referred to the Adult Criminal Drug Treatment Court program during FY09-10 completed the program. However, the completion rates were less than 50% in the other treatment courts. The retention rate remains well above 50% in all five treatment courts.

*Mecklenburg County Courthouse
832 East 4th Street
Suite 4420
Charlotte, NC 28202
Phone: 704-686-0269
Fax: 704-686-0340*

We're on the web!
www.nccourts.org



**The Trial Court
Administrator's Office**



***Building Public Trust and Confidence Through
Service Excellence, and Leadership***

This Report was prepared by:
Charles Keller, Jr. MA
Community Access and Outreach Administrator
26th Judicial District of North Carolina
832 East Fourth Street
Suite 4420
Charlotte, NC 28202
Direct: 704-686-0269
Email: charles.w.keller@nccourts.org

*Copies of this report were printed using funds allocated by Mecklenburg County.
To view an electronic copy of this report, please visit our website.*