



# Jail Population Trend Report

## Oct - Dec 2013

Prepared by Mecklenburg County Manager's Office

This report identifies and tracks emerging trends that may influence the operation of the detention facilities. The data below captures activity during the second quarter of FY 2014 and compares the observations to those of the previous quarter and year.

### I. Average Jail Population by Facility

	Oct - Dec 2013 ADP	Jul - Sep 2013 ADP	Oct - Dec 2012 ADP	Change From	
				Previous Qtr	Oct -Dec 2012
Jail Central	1,347	1,416	1,451	-5%	-7%
Jail North	564	548	578	3%	-2%
Work Release	26	31	33	-16%	-21%
All Facilities	1,937	1,996	2,062	-3%	-6%

### ADP As A Percentage Of Design / Functional Capacity<sup>1</sup>

	Oct -Dec 2013 D/F %	Jul - Sep 2013 D/F %	Oct -Dec 2012 D/F %	Facility Capacity	
				Design	Functional
Jail Central	71 / 83	74 / 88	76 / 90	1,904	1,618
Jail North	78 / 92	76 / 89	80 / 94	721	613
Work Release	29 / 34	34 / 40	37 / 43	90	77
All Facilities	71 / 84	74 / 86	76 / 89	2,715	2,308

- ADP decreased 6 percent (-125 inmates) from the same period of the previous year.
- Work Release ADP declined 21 percent from the previous year.
- ADP was 16 percent (371 inmates) below functional capacity during the second quarter.

<sup>1</sup> Design capacity is the total beds available in the facilities. Functional capacity represents 85 percent of design capacity. Functional capacity is considered the maximum number that can be housed while still permitting the proper segregation and movement of inmates according to gender, security risk, and related factors. Work Release does not consider functional capacity in its operations.

## II. Characteristics of the Jail Population

	Oct - Dec 2013	Jul – Sep 2013	Oct - Dec 2012
<b>Gender</b>			
Adult Male	1,712 (88%)	1,772 (89%)	1,829 (89%)
Female	162 (8%)	166 (8%)	178 (9%)
Youthful Offender (Male)	63 (3%)	58 (3%)	55 (3%)
<b>Race / Ethnicity</b>			
African-American	1,306 (68%)	1,351 (68%)	1,412 (68%)
Caucasian	328 (17%)	347 (17%)	339 (17%)
Hispanic	264 (14%)	264 (13%)	311 (15%)
Others	21 (1%)	22 (1%)	19 (1%)
<b>Custody Type</b>			
Pretrial	1,179 (62%)	1,239 (64%)	1,389 (66%)
Sentenced	87 (5%)	103 (5%)	102 (5%)
Federal- U.S Marshals	580 (31%)	545 (28%)	530 (25%)
Federal- Immigration	0 (0%)	0 (0%)	0 (%)
Federal- 287(g)	2 (<1%)	1 (<1%)	2 (<1%)
Federal- BOP	1 (<1%)	2 (<1%)	2 (<1%)
State Misdemeanant	48 (3%)	52 (3%)	87 (4%)
Probation Quick Dip/Dunk	1 (<1%)	<1 (<1%)	1 (<1%)

- Gender and race characteristics within the jail population were unchanged compared to the previous quarter and same period last year. Males (88 percent) and African-Americans (68 percent) remain the dominant population groups.
- Pretrial inmates declined to 64 percent of the population; a decline of 4 percentage points from the previous year and 2 points from the previous quarter.
- Federal inmates increased to 31 percent of the jail's population, an increase of 6 percentage points from the previous year.

### III. Booking and Release Composition<sup>2</sup>

	Oct –Dec 2013		Oct –Dec 2012	
	Avg. Monthly Composition	Avg. Length of Stay (days)	Avg. Monthly Composition	Avg. Length of Stay (days)
<b>Intakes</b>				
State	2,361	18	2,592	18
State Misdemeanant Program	5	58	8	-
Federal- USM	66	237	48	258
Federal- Immigration	6	<1	3	1
Federal- 287(g)	3	1	4	1
<b>Released</b>				
State	2,550		2,795	
State Misdemeanant Program	15		26	
Federal- USM	65		58	
Federal- Immigration	5		4	
Federal- 287(g)	33		53	

- Average monthly intake volume for State inmates decreased 9 percent from the previous year.

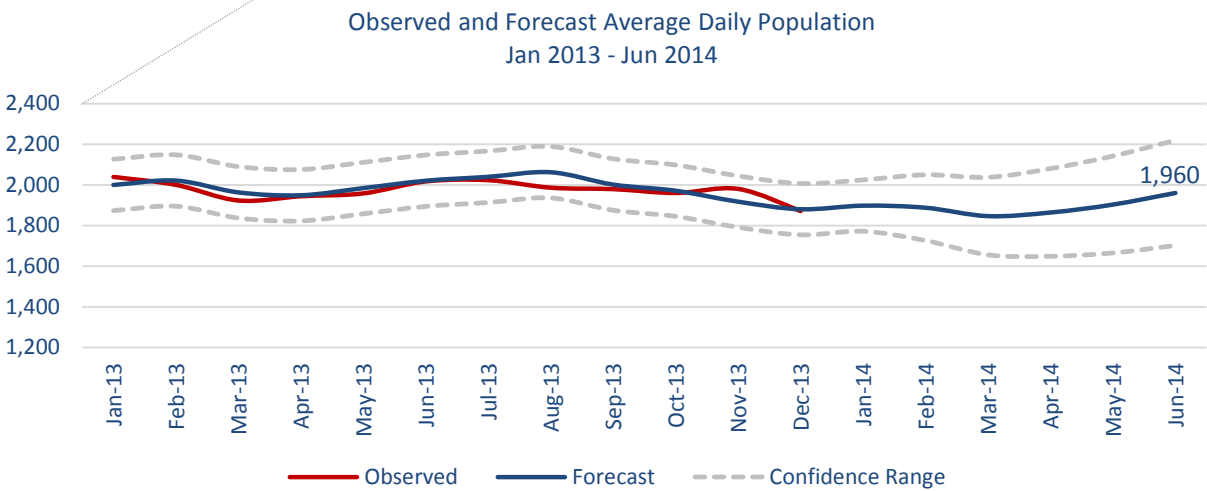
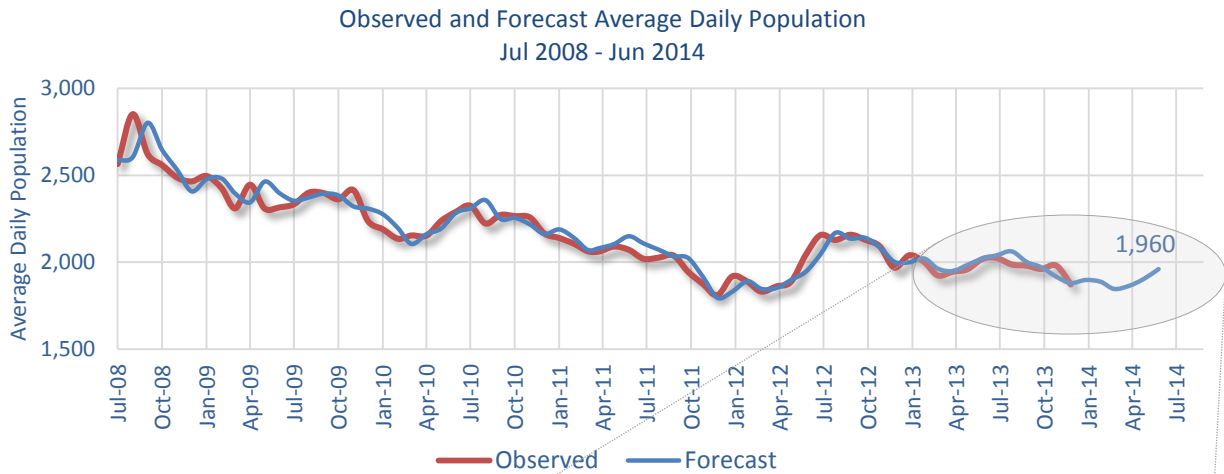
### IV. Average Length of Stay and Jail Bed Days by Release Type<sup>3</sup>

Type of Release	Oct - Dec 2013			Oct - Dec 2012		
	Released	Bed Days	ALOS (days)	Released	Bed Days	ALOS (days)
Secured	3,431	16,603	5	3,379	16,588	5
Time Served	713	27,038	38	925	39,362	43
Unsecured	1,098	9,990	9	1,499	11,841	8
Dismissed	326	10,136	31	304	12,533	41
Probation/Parole	103	5,357	52	137	7,594	55
Other Jurisdiction	1,248	97,305	78	1,126	108,767	97

<sup>2</sup> Average length of stay is determined by averaging the reported ALOS for each group in the FY 2010 MCSO Detention Report. The Detention Report calculates ALOS as (Total Bed Days / Number of Jail Intakes). "Bed days" is calculated as the sum of the reported average daily population. An "intake" is defined as an individual receiving a housing assignment (those who bond out or are otherwise released prior to a housing assignment are not considered intakes).

<sup>3</sup> This table examines ALOS based on the release reason. Length of stay is calculated as the number of days between the commit date and release date as found in the OMS Release Report (OIRRELDT). Only those individuals assigned housing in the jail will be found on the OMS report.

## V. Trends and Forecasting



- Given no changes within the criminal justice system, ADP is projected to gradually increase to 1,960 inmates in June 2014.