



Jail Population Trend Report

April - June 2012

Prepared by Mecklenburg County Manager's Office

The purpose of the report is to identify and track emerging trends that may influence the operation of the detention facilities. The data below captures events that occurred during the fourth quarter of FY 2012 and compares the observations to those of the previous quarter and year.

I. Average Jail Population by Facility

	Apr – Jun 2012 ADP	Jan – Mar 2012 ADP	Apr - Jun 2011 ADP	Change From	
				Previous Qtr	Apr - Jun 2011
Jail Central	1,410	1,345	1,423	5%	-1%
Jail North	497	487	509	2%	-2%
North Annex ¹	-	-	76	-	-
Work Release	43	47	70	-9%	-39%
All Facilities	1,929	1,878	2,053	3%	-6%

ADP As A Percentage Of Design / Functional Capacity²

	Apr - Jun 2012 D/F %	Jan - Mar 2012 D/F %	Apr - Jun 2011 D/F %	Facility Capacity ³	
				Design	Functional
Jail Central	74 / 87	71 / 83	75 / 88	1,904	1,618
Jail North	69 / 81	68 / 79	71 / 83	721	613
North Annex	-	-	24 / 28	-	-
Work Release	48 / 56	52 / 61	78 / 91	90	77
All Facilities	71 / 84	69 / 81	76 / 89	2,715	2,308

- ADP declined 6 percent (-124 inmates) from the same period of the previous year.
- ADP was below functional capacity during the quarter.

¹ North Annex was closed June 2011 in response to declining population.

² Design capacity is the total beds available in the facilities. Functional capacity represents 85 percent of design capacity. Functional capacity is considered the maximum number that can be housed while still permitting the proper segregation and movement of inmates according to gender, security risk, and related factors. Work Release does not consider functional capacity in its operations.

³ Facility totals do not include North Annex in this report.

II. Characteristics of the Jail Population

	Apr - Jun 2012	Jan – Mar 2012	Apr - Jun 2011
Gender			
Adult Male	1,700 (88%)	1,655 (88%)	1,808 (88%)
Female	169 (9%)	172 (9%)	179 (9%)
Youthful Offender (Male)	60 (3%)	51 (3%)	67 (3%)
Race / Ethnicity			
African-American	1,339 (69%)	1,278 (68%)	1,425 (70%)
Caucasian	296 (15%)	288 (15%)	299 (15%)
Hispanic	301 (15%)	295 (16%)	304 (15%)
Others	12 (1%)	9 (<1%)	11 (<1%)
Custody Type			
Pretrial	1,290 (67%)	1,249 (67%)	1,399 (68%)
Sentenced	130 (7%)	159 (9%)	256 (12%)
Federal- U.S Marshals	498 (26%)	438 (24%)	390 (19%)
Federal- Immigration	1 (<1%)	0 (%)	1 (<1%)
Federal- 287(g)	3 (<1%)	3 (<1%)	6 (<1%)
Federal- BOP	3 (<1%)	2 (<1%)	2 (<1%)

- Gender and race characteristics within the jail population were unchanged relative to the previous quarter and same period last year. Males (88 percent) and African-Americans (69 percent) remain the dominant population groups.
- Pretrial inmates comprised 67 percent of the population, down 1 percent from the previous year.
- Federal inmates, on average, represented 26 percent of the jail's population, a seven percentage point increase from the previous year.

III. Booking and Release Composition⁴

	Apr - Jun 2012		Apr - Jun 2011	
	Avg. Monthly Composition	Avg. Length of Stay (days)	Avg. Monthly Composition	Avg. Length of Stay (days)
Intakes				
State	2,700	16	2,930	17
State Misdemeanant Program	5	266	-	-
Federal- USM	62	197	47	194
Federal- Immigration	7	2	9	2
Federal- 287(g)	9	1	15	2
Released				
State	2,731		3,054	
State Misdemeanant Program	13			
Federal- USM	51		75	
Federal- Immigration	7		13	
Federal- 287(g)	65		104	

- Average monthly intake volume for State inmates declined 8 percent from the previous year.
- Immigration and 287(g) intakes declined significantly from the previous year (22 percent and 40 respectively).

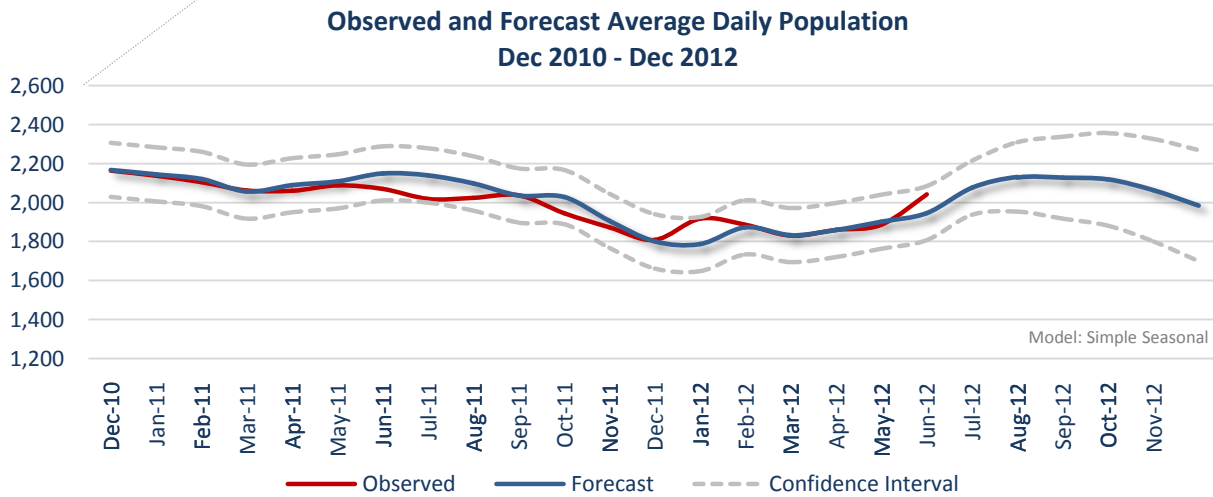
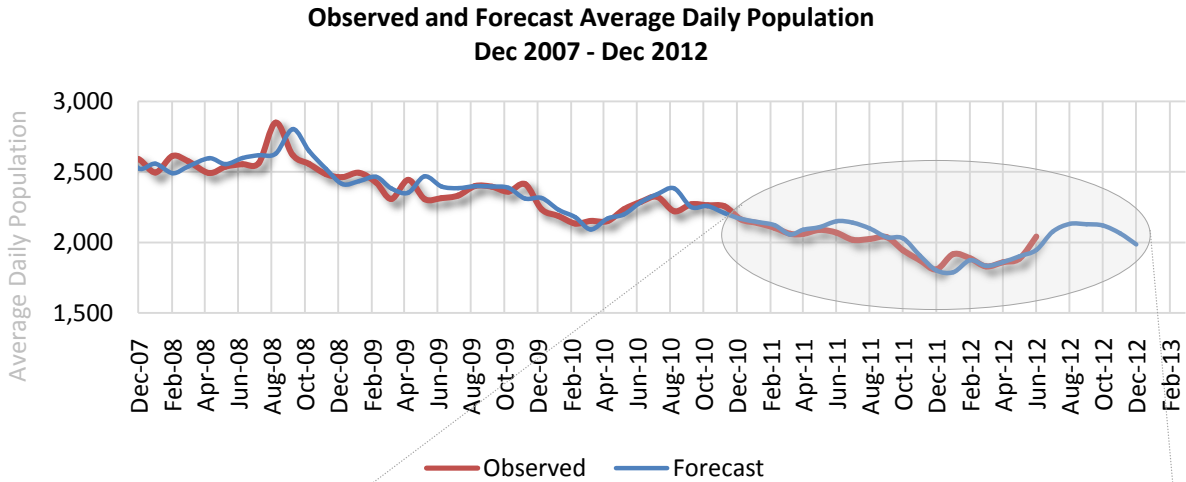
IV. Average Length of Stay and Jail Bed Days by Release Type⁵

Type of Release	Apr - Jun 2012			Apr - Jun 2011		
	Released	Bed Days	ALOS (days)	Released	Bed Days	ALOS (days)
Secured	3,536	13,492	4	3,956	15,223	4
Time Served	962	30,983	32	1,167	42,544	36
Unsecured	1,386	8,907	6	1,416	10,202	7
Dismissed	330	8,273	25	324	9,721	30
Probation/Parole	127	4,964	39	169	9,332	55
Other Jurisdiction	1,101	91,178	83	1,450	133,607	92

⁴ Average length of stay is determined by averaging the reported ALOS for each group in the FY 2010 MCSO Detention Report. The Detention Report calculates ALOS as (Total Bed Days / Number of Jail Intakes). "Bed days" is calculated as the sum of the reported average daily population. An "intake" is defined as an individual receiving a housing assignment (those who bond out or are otherwise released prior to a housing assignment are not considered intakes).

⁵ This table examines ALOS based on the release reason. Length of stay is calculated as the number of days between the commit date and release date as found in the OMS Release Report (OIRRELDT). Only those individuals assigned housing in the jail will be found on the OMS report.

V. Trends and Forecasting



- Given no changes within the criminal justice system, ADP is projected to peak in September at 2,128 inmates before beginning a seasonal decline to 1,984 inmates in December 2012.