



Jail Population Trend Report

Jan - Mar 2012

Prepared by Mecklenburg County Manager's Office

The purpose of the report is to identify and track emerging trends that may influence the operation of the detention facilities. The data below captures events that occurred during the third quarter of FY 2012 and compares the observations to those of the previous quarter and year.

I. Average Jail Population by Facility

	Jan – Mar 2012 ADP	Oct – Dec 2011 ADP	Jan – Mar 2011 ADP	Change From	
				Previous Qtr	Jan - Mar 2011
Jail Central	1,345	1,354	1,381	-1%	-3%
Jail North	487	471	465	3%	5%
North Annex ¹	-	-	197	-	-
Work Release	47	51	58	-8%	-19%
All Facilities	1,878	1,876	2,101	-	-11%

ADP As A Percentage Of Design / Functional Capacity²

	Jan – Mar 2012 D/F %	Oct - Dec 2011 D/F %	Jan – Mar 2011 D/F %	Facility Capacity	
				Design	Functional
Jail Central	71 / 83	71 / 84	73 / 85	1,904	1,618
Jail North	79 / 93	77 / 90	76 / 89	614	522
Work Release	49	53 / -	60 / -	96	96
All Facilities	72 / 85	72 / 84	74 / 84	2,614	2,222

- ADP declined 11 percent (-223 inmates) from the same period of the previous year.
- ADP did not exceed functional capacity at any facility during the quarter.

¹ North Annex was closed June 2011 in response to declining population.

² Design capacity is the total beds available in the facilities. Functional capacity represents 85 percent of design capacity. Functional capacity is considered the maximum number that can be housed while still permitting the proper segregation and movement of inmates according to gender, security risk, and related factors. Work Release does not consider functional capacity in its operations.

II. Characteristics of the Jail Population

	Jan – Mar 2012	Oct - Dec 2011	Jan – Mar 2011
Gender			
Adult Male	1,655 (88%)	1,648 (88%)	1,874 (89%)
Female	172 (9%)	168 (9%)	174 (8%)
Youthful Offender (Male)	51 (3%)	60 (3%)	58 (3%)
Race / Ethnicity			
African-American	1,278 (68%)	1,291 (69%)	1,402 (67%)
Caucasian	288 (15%)	260 (14%)	308 (15%)
Hispanic	295 (16%)	308 (16%)	366 (18%)
Others	9 (<1%)	11 (1%)	11 (1%)
Custody Type			
Pretrial	1,249 (67%)	1,286 (68%)	1,417 (67%)
Sentenced	159 (9%)	209 (11%)	225 (11%)
Federal- U.S Marshals	438 (24%)	377 (21%)	421 (20%)
Federal- Immigration	0 (%)	0 (%)	23 (1%)
Federal- 287(g)	3 (<1%)	4 (<1%)	17 (1%)
Federal- BOP	2 (<1%)	3 (<1%)	2 (<1%)

- Gender and race characteristics within the jail population were unchanged relative to the previous quarter and same period last year. Males (88 percent) and African-Americans (68 percent) remain the dominant population groups.
- Pretrial inmates comprised 67 percent of the population, unchanged from the previous year.
- Federal inmates, on average, represented 24 percent of the jail's population, a four percentage point increase from the previous year.

III. Booking and Release Composition³

	Jan – Mar 2012		Jan – Mar 2011	
	Avg. Monthly Composition	Avg. Length of Stay (days)	Avg. Monthly Composition	Avg. Length of Stay (days)
Intakes				
State	2,570	17	2,878	17
State Misdemeanant Program	5	203	-	-
Federal- USM	75	157	45	256
Federal- Immigration	8	1	142	5
Federal- 287(g)	4	1	24	5
Released				
State	2,660		2,960	
State Misdemeanant Program	8		-	
Federal- USM	51		60	
Federal- Immigration	7		145	
Federal- 287(g)	70		105	

- Average monthly intake volume for State inmates declined 11 percent from the previous year.
- Immigration and 287(g) intakes declined significantly from the previous year (94 percent and 83 respectively).

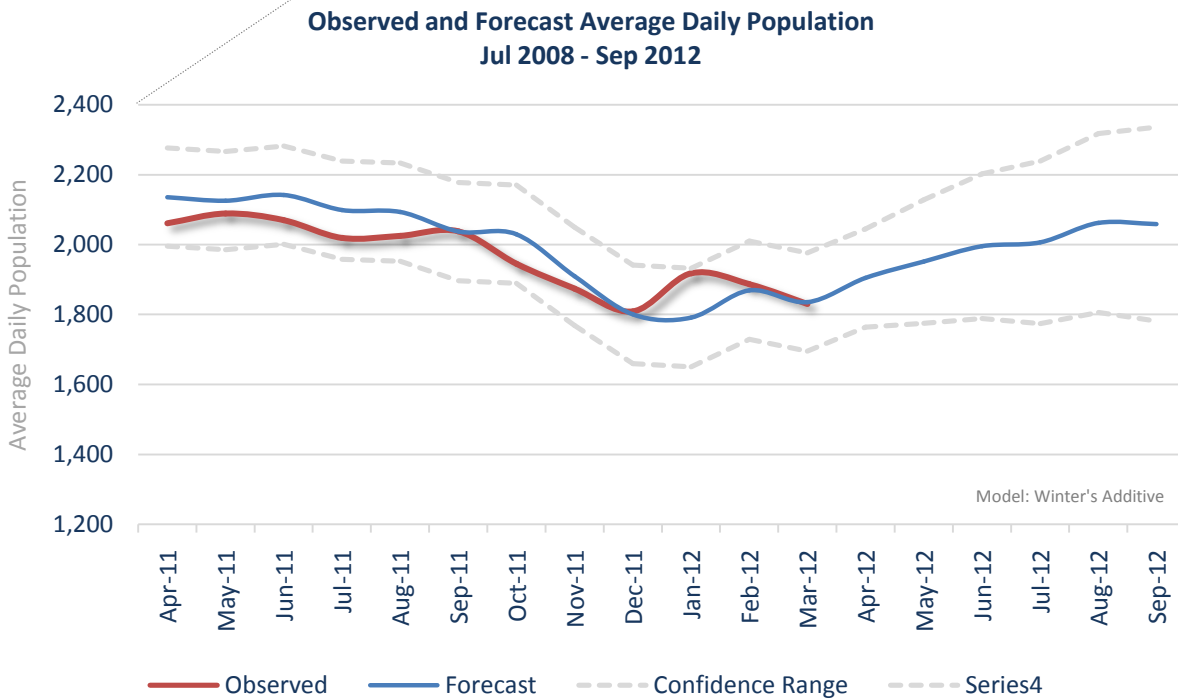
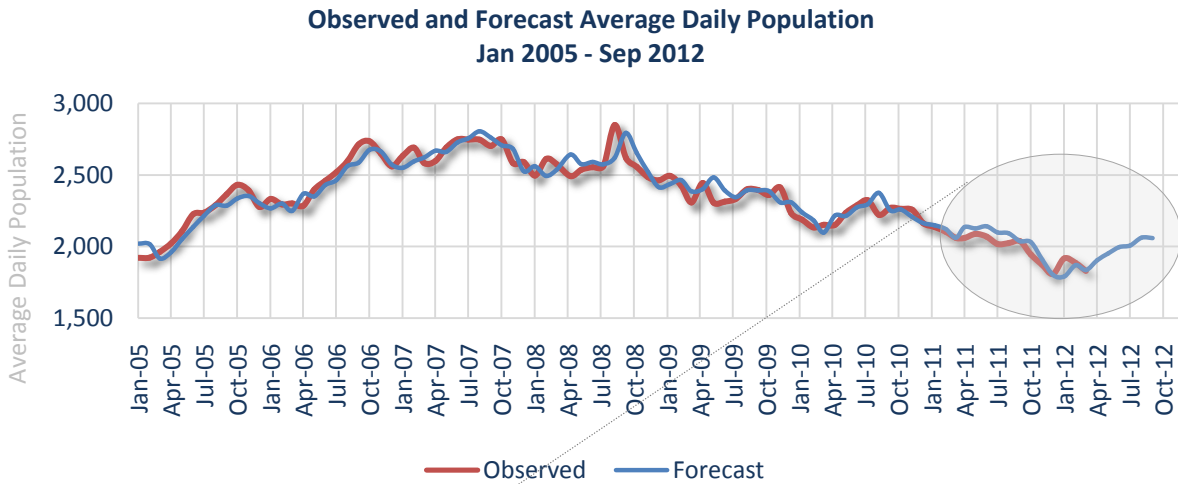
IV. Average Length of Stay and Jail Bed Days by Release Type⁴

Type of Release	Jan – Mar 2012			Jan – Mar 2011		
	Released	Bed Days	ALOS (days)	Released	Bed Days	ALOS (days)
Secured	3,637	18,988	5	4,038	19,182	5
Time Served	925	33,504	36	1,133	37,651	33
Unsecured	1,115	9,920	9	1,333	9,949	7
Dismissed	331	13,145	40	333	13,651	41
Probation/Parole	160	9,056	57	152	9,693	64
Other Jurisdiction	1,150	92,028	80	1,726	128,569	74

³ Average length of stay is determined by averaging the reported ALOS for each group in the FY 2010 MCSO Detention Report. The Detention Report calculates ALOS as (Total Bed Days / Number of Jail Intakes). "Bed days" is calculated as the sum of the reported average daily population. An "intake" is defined as an individual receiving a housing assignment (those who bond out or are otherwise released prior to a housing assignment are not considered intakes).

⁴ This table examines ALOS based on the release reason. Length of stay is calculated as the number of days between the commit date and release date as found in the OMS Release Report (OIRRELDT). Only those individuals assigned housing in the jail will be found on the OMS report.

V. Trends and Forecasting of Jail Population



- Given no changes within the criminal justice system, ADP is projected to increase through September to 2,059 inmates.