



Jail Population Trend Report

Oct – Dec 2011

Prepared by Mecklenburg County Manager's Office

The purpose of the report is to identify and track emerging trends that may influence the operation of the detention facilities. The data below captures events that occurred during the second quarter of FY 2012 and compares the observations to those of the previous quarter and year.

I. Average Jail Population by Facility

	Oct – Dec 2011 ADP	Jul – Sep 2011 ADP	Oct - Dec 2010 ADP	Change From	
				Previous Qtr	Oct - Dec 2010
Jail Central	1,354	1,472	1,438	-8%	-6%
Jail North	471	493	494	-4%	-5%
North Annex	-	-	240	-	100%
Work Release	51	63	56	-19%	-9%
All Facilities	1,876	2,027	2,228	-7%	-16%

ADP As A Percentage Of Design / Functional Capacity¹

	Oct - Dec 2011 D/F %	Jul - Sep 2011 D/F %	Oct - Dec 2010 D/F %	Facility Capacity	
				Design	Functional
Jail Central	71 / 84	77 / 91	79 / 93	1,904	1,618
Jail North	77 / 90	80 / 94	86 / 101	614	522
Work Release	53 / -	66 / -	61 / -	96	96
All Facilities	72 / 84	78 / 91	80 / 91	2,614	2,222

- ADP declined 16 percent (-438 inmates) from the same period of the previous year.
- ADP did not exceed functional capacity at any facility during the quarter.
- North Annex was closed June 2011 in response to declining population.

¹ Design capacity is the total beds available in the facilities. Functional capacity represents 85 percent of design capacity. Functional capacity is considered the maximum number that can be housed while still permitting the proper segregation and movement of inmates according to gender, security risk, and related factors. Work Release does not consider functional capacity in its operations.

II. Characteristics of the Jail Population

	Oct - Dec 2011	Jul - Sep 2011	Oct - Dec 2010
Gender			
Adult Male	1,648 (88%)	1,778 (88%)	1,971 (88%)
Female	168 (9%)	186 (9%)	193 (9%)
Youthful Offender (Male)	60 (3%)	63 (3%)	64 (3%)
Race / Ethnicity			
African-American	1,291 (69%)	1,397 (69%)	1,513 (70%)
Caucasian	260 (14%)	297 (15%)	319 (15%)
Hispanic	308 (16%)	311 (15%)	308 (14%)
Others	11 (1%)	11 (<1%)	14 (1%)
Custody Type			
Pretrial	1,286 (68%)	1,430 (71%)	1,506 (68%)
Sentenced	209 (11%)	237 (12%)	247 (11%)
Federal- U.S Marshals	377 (21%)	353 (17%)	429 (19%)
Federal- Immigration	0 (%)	0 (%)	26 (1%)
Federal- 287(g)	4 (<1%)	6 (<1%)	17 (1%)
Federal- BOP	3 (<1%)	1 (<1%)	3 (<1%)

- The distribution of gender and race within the population was unchanged relative to the previous quarter and same period last year. Males (88 percent) and African-Americans (69 percent) remain the dominant population groups.
- Pretrial inmates comprised 68 percent of the population, unchanged from the previous year.
- Federal inmates on average represented 20 percent of the jail's population, consistent with the previous year.

III. Booking and Release Composition²

	Oct - Dec 2011		Oct - Dec 2010	
	Avg. Monthly Composition	Avg. Length of Stay (days)	Avg. Monthly Composition	Avg. Length of Stay (days)
Intakes				
State	2,525	18	2,733	20
Federal- USM	55	190	44	223
Federal- Immigration	3	1	152	5
Federal- 287(g)	7	1	17	5
Released				
State	2,687		2,853	
Federal- USM	52		63	
Federal- Immigration	5		157	
Federal- 287(g)	70		110	

- The average monthly intake volume for State inmates declined 8 percent from the previous year.
- Immigration intakes declined 98 percent from the previous year.
- 287(g) intakes declined nearly 60 percent the previous year.
- Average length of stay (ALOS) for F-USM inmates decreased 15 percent to 190 days; State inmate ALOS decreased by two days from the previous year.

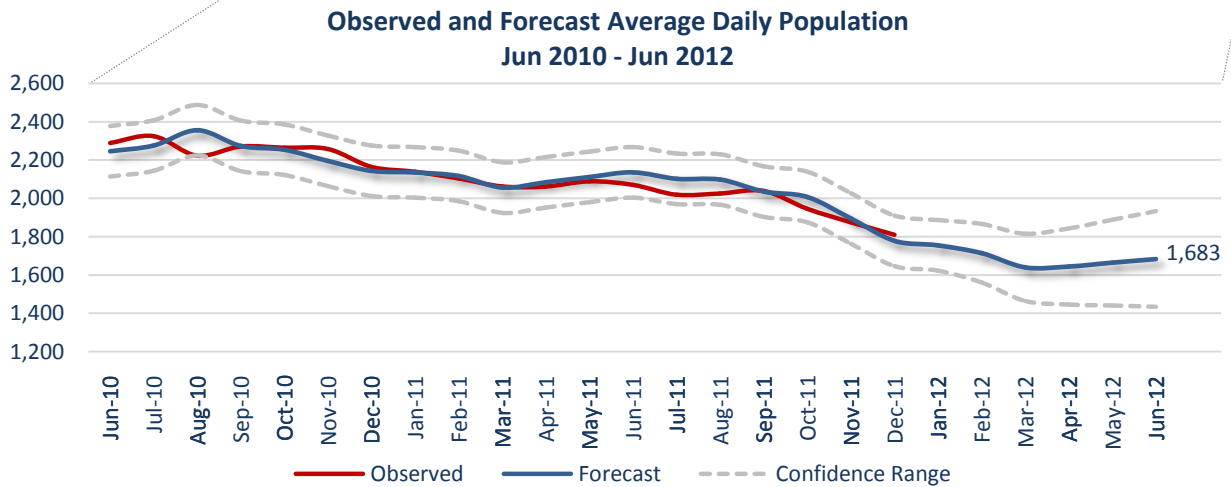
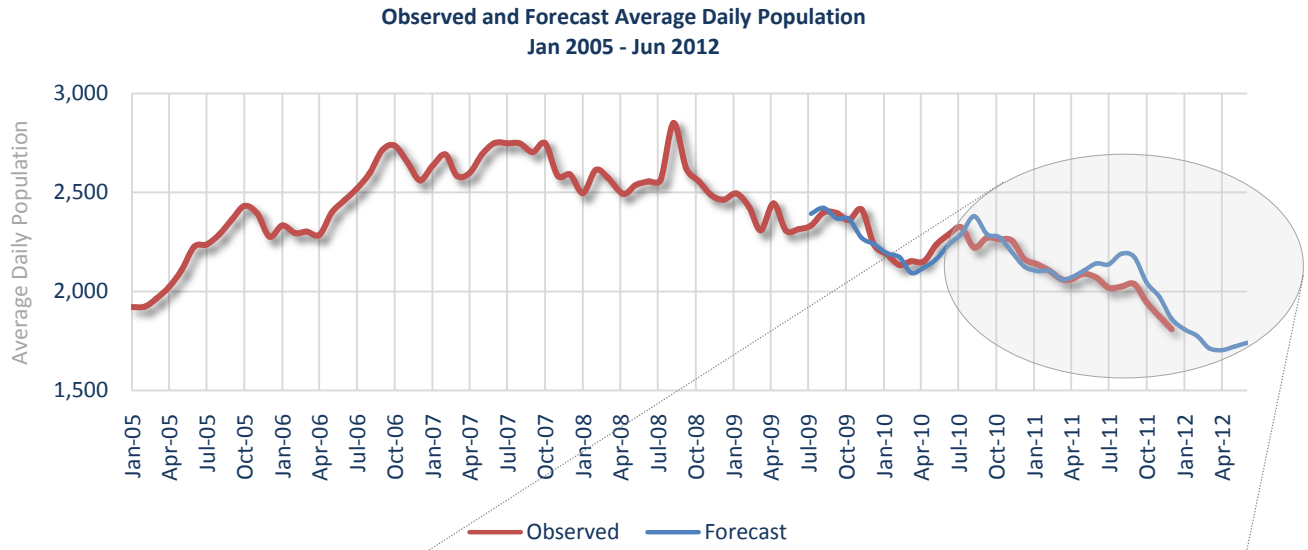
IV. Average Length of Stay and Jail Bed Days by Release Type³

Type of Release	Oct - Dec 2011			Oct - Dec 2010		
	Released	Bed Days	ALOS (days)	Released	Bed Days	ALOS (days)
Secured	3,427	13,509	4	3,807	18,913	5
Time Served	1,013	42,447	42	1,073	40,348	38
Unsecured	1,360	8,756	6	1,406	11,729	8
Dismissed	303	9,687	32	330	12,190	37
Probation/Parole	142	7,201	51	148	9,226	62
Other Jurisdiction	1,162	102,401	88	1,754	124,869	71

² Average length of stay is determined by averaging the reported ALOS for each group in the FY 2010 MCSO Detention Report. The Detention Report calculates ALOS as (Total Bed Days / Number of Jail Intakes). "Bed days" is calculated as the sum of the reported average daily population. An "intake" is defined as an individual receiving a housing assignment (those who bond out or are otherwise released prior to a housing assignment are not considered intakes).

³ This table examines ALOS based on the release reason. Length of stay is calculated as the number of days between the commit date and release date as found in the OMS Release Report (OIRRELDT). Only those individuals assigned housing in the jail will be found on the OMS report.

V. Trends and Forecasting of Jail Population



- Given no changes within the criminal justice system, ADP is projected to continue declining through June to 1,683 inmates.