



Jail Population Trend Report

Jul - Sept 2011

Prepared by Mecklenburg County Manager's Office

The purpose of the report is to identify and track emerging trends that may influence the operation of the detention facilities. The data below captures events that occurred during the first quarter of FY 2012 and compares the observations to those of the previous quarter and year.

I. Average Jail Population by Facility

	Jul – Sep 2011 ADP	Apr - Jun 2011 ADP	Jul - Sep 2010 ADP	Change From	
				Previous Qtr	Jul - Sep 2010
Jail Central	1,472	1,423	1,497	3%	- 2%
Jail North	493	509	528	-3%	-7%
North Annex	-	76	189	-	-
Work Release	63	70	59	-10%	7%
All Facilities	2,027	2,053	2,273	-1%	-11%

ADP As A Percentage Of Design / Functional Capacity¹

	Jul - Sep 2011 D/F %	Apr - Jun 2011 D/F %	Jul - Sep 2010 D/F %	Facility Capacity	
				Design	Functional
Jail Central	77 / 91	75 / 88	79 / 93	1,904	1,618
Jail North	80 / 94	83 / 98	86 / 101	614	522
Work Release	66 / -	73 / -	61 / -	96	96
All Facilities	78 / 91	72 / 82	80 / 91	2,614	2,222

- ADP declined 11 percent from the same period of the previous year.
- ADP did not exceed functional capacity at any facility during the quarter.
- North Annex was closed June 2011 in response to declining population.

¹ Design capacity is the total beds available in the facilities. Functional capacity represents 85 percent of design capacity. Functional capacity is considered the maximum number that can be housed while still permitting the proper segregation and movement of inmates according to gender, security risk, and related factors. Work Release does not consider functional capacity in its operations.

II. Characteristics of the Jail Population

	Jul - Sep 2011	Apr - Jun 2011	Jul - Sep 2010
Gender			
Adult Male	1,778 (88%)	1,808 (88%)	2,006 (88%)
Female	186 (9%)	179 (9%)	185 (8%)
Youthful Offender (Male)	63 (3%)	67 (3%)	82 (4%)
Race / Ethnicity			
African-American	1,397 (69%)	1,425 (70%)	1,549 (69%)
Caucasian	297 (15%)	299 (15%)	292 (13%)
Hispanic	311 (15%)	304 (15%)	399 (18%)
Others	11 (<1%)	11 (<1%)	13 (1%)
Custody Type			
Pretrial	1,430 (71%)	1,399 (68%)	1,546 (68%)
Sentenced	237 (12%)	256 (12%)	238 (10%)
Federal- U.S Marshals	353 (17%)	390 (19%)	439 (19%)
Federal- Immigration	0 (%)	1 (<1%)	23 (1%)
Federal- 287(g)	6 (<1%)	6 (<1%)	22 (1%)
Federal- BOP	1 (<1%)	2 (<1%)	4 (<1%)

- The distribution of gender and race within the population was unchanged relative to the previous quarter and same period last year. Males (88 percent) and African-Americans (69 percent) remain the dominant population groups.
- Pretrial inmates comprised 71 percent of the population, an increase of 3 percentage points from the previous year.
- Federal inmates represented 17 percent of the jail's population, a decline of 2 percentage points from the previous year.

III. Booking and Release Composition²

	Jul - Sep 2011		Jul - Sep 2010	
	Avg. Monthly Composition	Avg. Length of Stay (days)	Avg. Monthly Composition	Avg. Length of Stay (days)
Intakes				
State	2,800	18	2,864	19
Federal- USM	57	165	50	226
Federal- Immigration	6	1	162	4
Federal- 287(g)	18	2	36	4
Released				
State	2,936		3,163	
Federal- USM	53		57	
Federal- Immigration	8		365	
Federal- 287(g)	93		121	

- The average monthly intake volume for State inmates declined 2 percent from the previous year.
- Immigration intakes declined 96 percent from the previous year.
- 287(g) intakes were half of that recorded the previous year.
- Average length of stay (ALOS) for F-USM inmates decreased 27 percent to 165 days; State inmate ALOS decreased by one day.

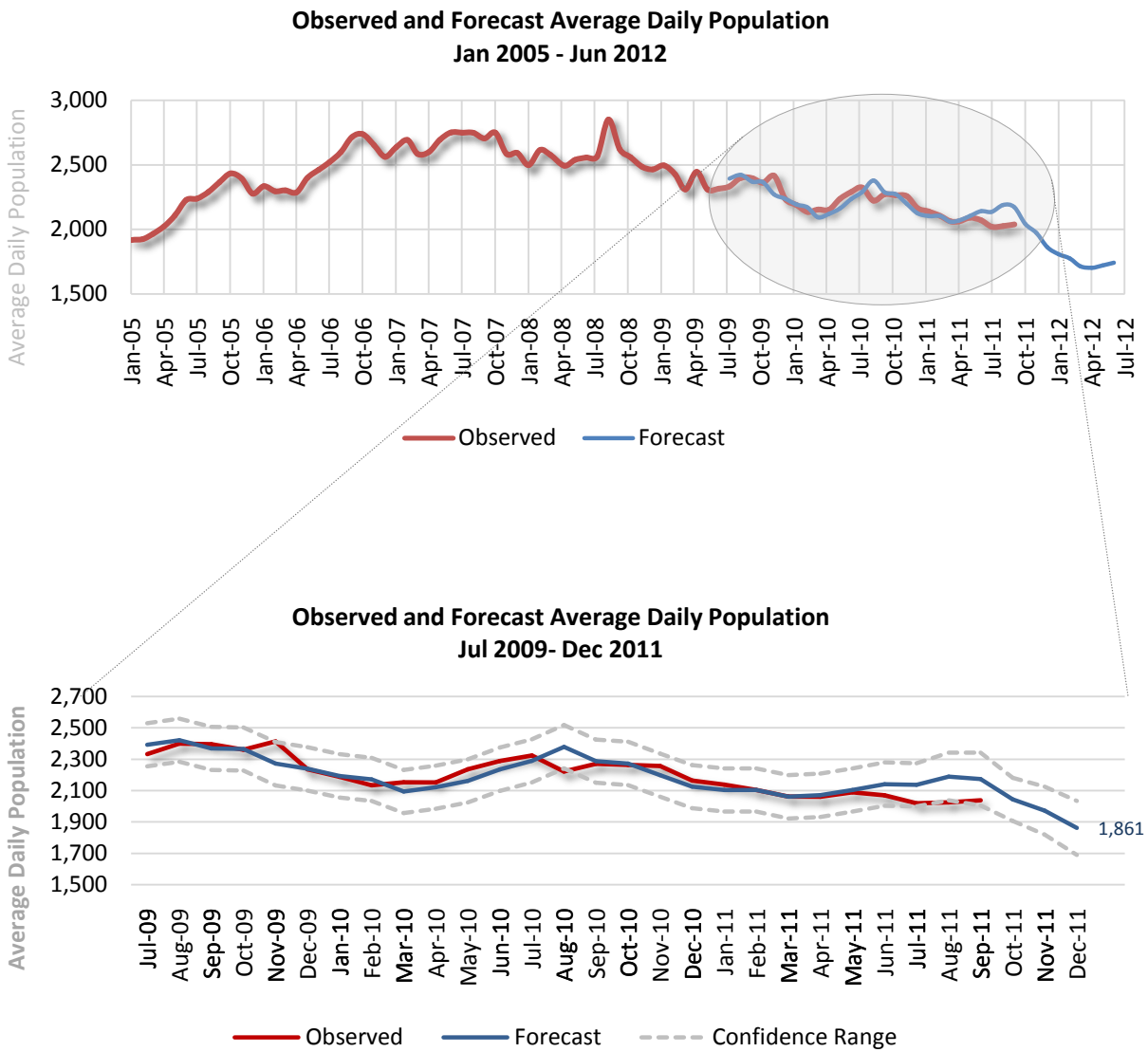
IV. Average Length of Stay and Jail Bed Days by Release Type³

Type of Release	Jul - Sep 2011			Jul - Sep 2010		
	Released	Bed Days	ALOS (days)	Released	Bed Days	ALOS (days)
Secured	3,655	14,868	4	3,846	17,788	5
Time Served	1,179	42,197	36	1,137	42,394	37
Unsecured	1,318	10,348	8	1,577	9,705	8
Dismissed	349	13,237	38	343	13,982	41
Probation/Parole	196	11,071	56	216	12,588	58
Other Jurisdiction	1,397	102,247	73	1,836	109,023	59

² Average length of stay is determined by averaging the reported ALOS for each group in the FY 2010 MCSO Detention Report. The Detention Report calculates ALOS as (Total Bed Days / Number of Jail Intakes). "Bed days" is calculated as the sum of the reported average daily population. An "intake" is defined as an individual receiving a housing assignment (those who bond out or are otherwise released prior to a housing assignment are not considered intakes).

³ This table examines ALOS based on the release reason. Length of stay is calculated as the number of days between the commit date and release date as found in the OMS Release Report (OIRRELDT). Only those individuals assigned housing in the jail will be found on the OMS report.

V. Trends and Forecasting of Jail Population



- ADP is projected to continue declining through December to 1,861.