



Jail Population Trend Report

Jan - Mar 2011

Prepared by Mecklenburg County Manager's Office

The purpose of the report is to identify and track emerging trends that may influence the operation of the detention facilities. The data below captures events that occurred during the third quarter of FY 2011 and compares the observations to those of the previous quarter and year.

I. Average Jail Population by Facility

	Jan – Mar 2011 ADP	Oct- Dec 2010 ADP	Jan - Mar 2010 ADP	Change From	
				Previous Qtr	Jan - Mar 2010
Jail Central	1,381	1,438	1,476	-4%	-6%
Jail North	465	494	469	-6%	-1%
North Annex	197	240	143	-18%	38%
Work Release	58	56	71	4%	-18%
All Facilities	2,101	2,228	2,158	-6%	-3%

ADP As A Percentage Of Design / Functional Capacity¹

	Jan – Mar 2011 D/F %	Oct- Dec 2010 D/F %	Jan - Mar 2010 D/F %	Facility Capacity	
				Design	Functional
Jail Central	73 / 85	76 / 89	76 / 91	1,904	1,618
Jail North	76 / 89	80 / 95	76 / 90	614	522
North Annex	62 / 72	75 / 88	45 / 53	320	272
Work Release	60 / -	58 / -	--	96	96
All Facilities	74 / 84	78 / 89	76 / 86	2,847	2,508

- ADP declined 3 percent from the same period of the previous year.
- ADP did not exceed functional capacity at any facility during the quarter.
- North Annex ADP increased 38 percent from the same period of the previous year.

¹ Design capacity is the total beds available in the facilities. Functional capacity represents 85 percent of design capacity. Functional capacity is considered the maximum number that can be housed while still permitting the proper segregation and movement of inmates according to gender, security risk, and related factors. Work Release does not consider functional capacity in its operations.

II. Characteristics of the Jail Population

	Jan – Mar 2011	Oct - Dec 2010	Jan – Mar 2010
Gender			
Adult Male	1,874 (89%)	1,971 (88%)	1,923 (89%)
Female	174 (8%)	193 (9%)	162 (8%)
Youthful Offender (Male)	58 (3%)	64 (3%)	75 (3%)
Race / Ethnicity			
African-American	1,402 (67%)	1,513 (68%)	1,442 (67%)
Caucasian	308 (15%)	319 (14%)	297 (14%)
Hispanic/Latino	366 (18%)	369 (17%)	392 (18%)
Others	11 (1%)	14 (1%)	17 (1%)
Custody Type			
Pretrial	1,417 (67%)	1,506 (68%)	1,475 (68%)
Sentenced	225 (11%)	247 (11%)	227 (10%)
Federal- U.S Marshals	421 (20%)	429 (19%)	410 (19%)
Federal- Immigration	23 (1%)	26 (1%)	24 (1%)
Federal- 287(g)	17 (1%)	17 (1%)	16 (1%)
Federal- BOP	2 (<1%)	3 (<1%)	10 (<1%)

- The distribution of gender and race within the population was unchanged relative to the previous quarter and same period last year. Males (89 percent) and African-Americans (67 percent) remain the dominant population groups.
- The distribution of inmates by custody type remained stable during the period. Just over two-thirds of the jail's population (67 percent) was comprised of pretrial inmates.
- Federal inmates represented 20 percent of the jail's population; consistent with the previous quarter and the same period of 2009.

III. Booking and Release Composition²

	Jan – Mar 2011		Jan – Mar 2010	
	Avg. Monthly Composition	Avg. Length of Stay (days)	Avg. Monthly Composition	Avg. Length of Stay (days)
Intakes				
State	2,878	17	2,910	18
Federal- USM	45	256	54	176
Federal- Immigration	142	5	171	4
Federal- 287(g)	24	5	10	4
Released				
State	2,960		3,021	
Federal- USM	60		49	
Federal- Immigration	145		168	
Federal- 287(g)	105		119	

- The average monthly intake volume for State inmates declined 1 percent from the previous year.
- 287(g) intakes more than doubled from the previous year.
- Immigration intakes declined 17 percent from the previous year.
- Average length of stay (ALOS) for F-USM inmates increased 45 percent to 256 days; State inmate ALOS decreased by one day.

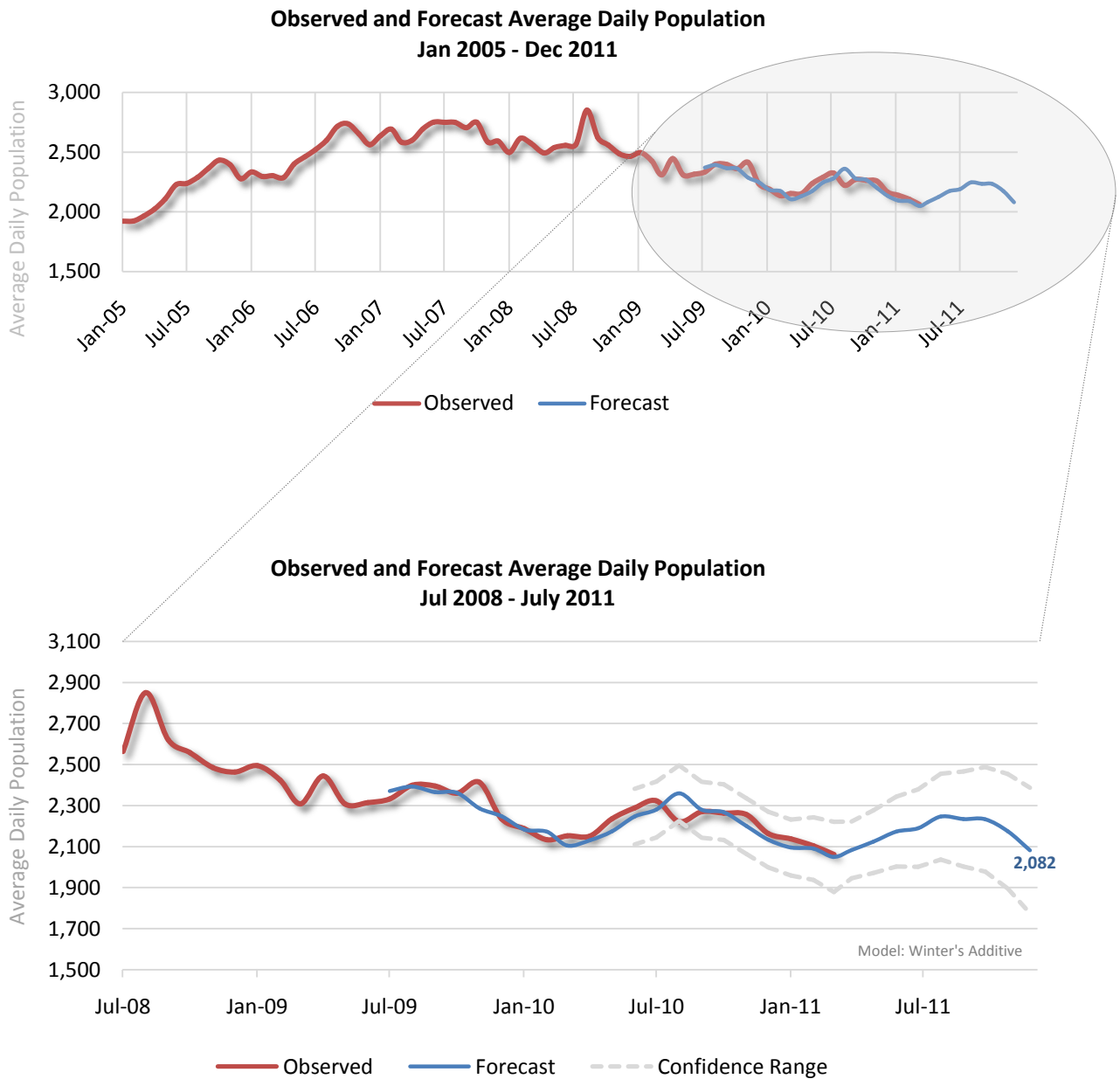
IV. Average Length of Stay and Jail Bed Days by Release Type³

Type of Release	Jan – Mar 2011			Jan – Mar 2010		
	Released	Bed Days	ALOS (days)	Released	Bed Days	ALOS (days)
Secured	4,038	19,182	5	4,219	20,628	5
Time Served	1,133	37,651	33	1,000	37,119	37
Unsecured	1,333	9,949	7	1,488	10,978	7
Dismissed	333	13,651	41	280	12,106	43
Probation/Parole	152	9,693	64	167	8,782	52
Other Jurisdiction	1,726	128,569	74	1,796	119,005	66

² Average length of stay is determined by averaging the reported ALOS for each group in the FY 2010 MCSO Detention Report. The Detention Report calculates ALOS as (Total Bed Days / Number of Jail Intakes). "Bed days" is calculated as the sum of the reported average daily population. An "intake" is defined as an individual receiving a housing assignment (those who bond out or are otherwise released prior to a housing assignment are not considered intakes).

³ This table examines ALOS based on the release reason. Length of stay is calculated as the number of days between the commit date and release date as found in the OMS Release Report (OIRRELD). Only those individuals assigned housing in the jail will be found on the OMS report.

V. Trends and Forecasting of Jail Population



- A seasonal increase in ADP to 2,234 is projected in October 2011 followed by a decline to 2,082 in December.