



# Jail Population Trend Report

Apr - Jun 2010

Prepared by Mecklenburg County Manager's Office

The purpose of the report is to identify and track emerging trends that may influence the operation of the detention facilities. The data below captures events that occurred during the fourth quarter of FY 2010 and compares the statistics to the previous quarter and year.

## I. Average Jail Population by Facility

	Apr - Jun 2010 ADP	Jan - Mar 2010 ADP	Apr - Jun 2009 ADP	Change From	
				Previous Qtr	Apr - Jun 2009
Jail Central	1,498	1,476	1,687	2%	-11%
Jail North	504	469	578	7%	-13%
North Annex	142	143	-	-	-
Work Release	82	71	90	15%	-9%
All Facilities	2,226	2,159	2,355	3%	-5%

### ADP As A Percentage Of Design / Functional Capacity<sup>1</sup>

	Apr - Jun 2010 D/F %	Jan - Mar 2010 D/F %	Apr - Jun 2009 D/F %	Facility Capacity	
				Design	Functional
Jail Central	79 / 93	78 / 91	89 / 104	1,904	1,618
Jail North	82 / 97	76 / 90	94 / 111	614	522
North Annex	44 / 52	45 / 53	-	320	272
Work Release	55 / -	43 / -	60 / -	150	150
All Facilities	74 / 87	72 / 84	79 / 92	2,988	2,562

- The jail experienced a seasonal increase of 3% in ADP during the 4<sup>th</sup> quarter; even with the increase, ADP was 5% lower than the same period last year.
- ADP did not exceed functional capacity during the quarter.
- North Annex ADP during the 4<sup>th</sup> quarter was 44 percent of functional capacity, effectively unchanged from the previous quarter.

<sup>1</sup> Design capacity is the total beds available in the facilities. Functional capacity represents 85 percent of design capacity. Functional capacity is considered the maximum number that can be housed while still permitting the proper segregation and movement of inmates according to gender, security risk, and related factors. Work Release does not consider functional capacity in its operations.

## II. Characteristics of the Jail Population

	Apr – Jun 2010	Jan - Mar 2010	Apr - Jun 2009
<b>Gender</b>			
Adult Male	1,967 (88%)	1,923 (89%)	2,092 (89%)
Female	175 (8%)	162 (8%)	181 (8%)
Youthful Offender (Male)	83 (4%)	75 (3%)	82 (3%)
<b>Race / Ethnicity</b>			
African-American	1,512 (68%)	1,442 (67%)	1,567 (67%)
Caucasian	293 (13%)	297 (14%)	308 (13%)
Hispanic/Latino	392 (18%)	392 (18%)	439 (19%)
Others	17 (1%)	17 (1%)	25 (1%)
<b>Custody Type</b>			
Pretrial	1,505 (68%)	1,475 (68%)	1,165 (61%)
Sentenced	259 (12%)	227 (10%)	283 (15%)
Federal- U.S Marshals	411 (18%)	410 (19%)	379 (20%)
Federal- Immigration	27 (1%)	24 (1%)	53 (3%)
Federal- 287(g)	17 (1%)	16 (1%)	29 (2%)
Federal- BOP	7 (<1%)	10 (<1%)	8 (<1%)

- The distribution of gender and race within the population was unchanged relative to the previous quarter and same period last year. Males (89 percent) and African-Americans (67 percent) remain the dominant population groups.
- The distribution of inmates by custody type remained stable during the period. Just over two-thirds of the jail's population (68 percent) was comprised of pretrial inmates.
- Federal inmates represented 21 percent of the jail's population; consistent with the previous quarter, though slightly lower than that observed during the same period of 2009 (24 percent).

### III. Booking and Release Composition<sup>2</sup>

	Apr - Jun 2010		Apr - Jun 2009	
	Avg. Monthly Composition	Avg. Length of Stay (days)	Avg. Monthly Composition	Avg. Length of Stay (days)
<b>Intakes</b>				
State	3,076	18	3,090	19
Federal- USM	49	212	52	130
Federal- Immigration	155	5	297	5
Federal- 287(g)	15	4	27	4
<b>Released</b>				
State	3,066		3,194	
Federal- USM	50		58	
Federal- Immigration	168		274	
Federal- 287(g)	119		210	

- The average volume of State and US Marshal (F-USM) intakes remained steady from the previous year.
- Immigration intakes declined 48 percent (n=142) from the previous year.
- Average length of stay (ALOS) for F-USM inmates increased 63 percent to 212 days; State inmate ALOS declined by one day.

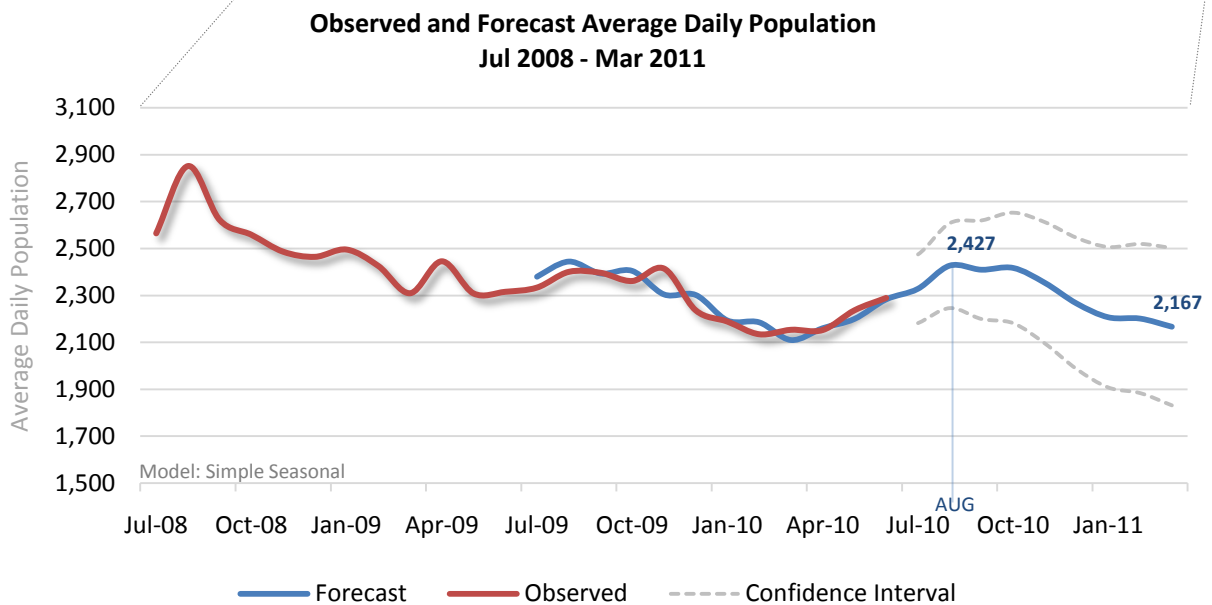
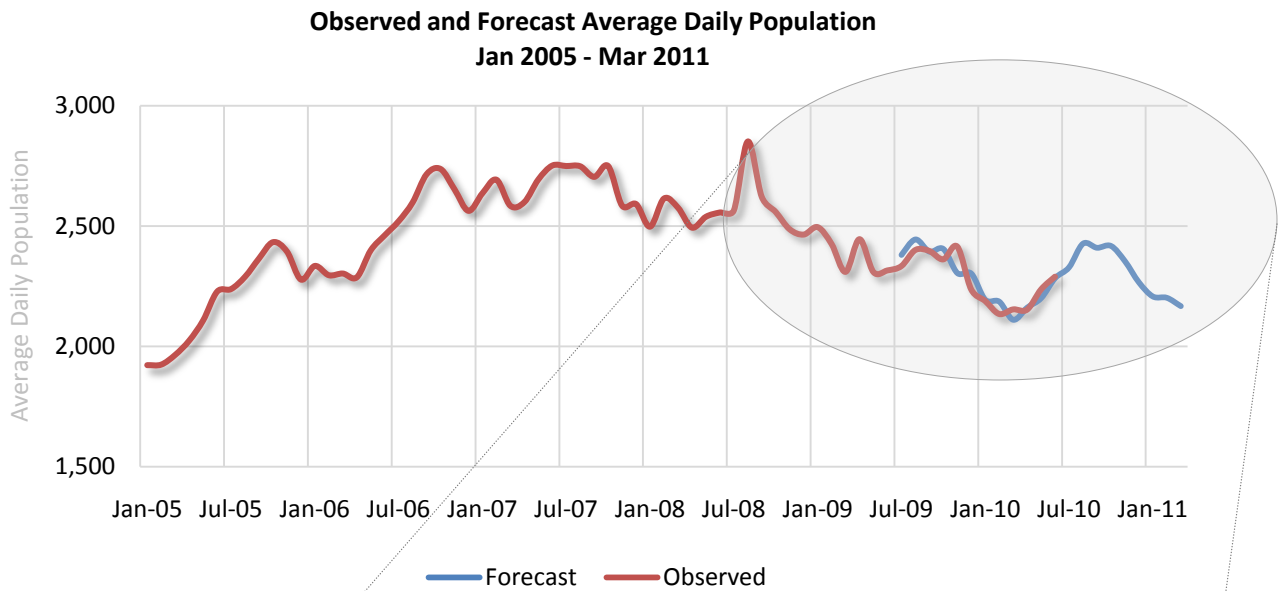
### IV. Average Length of Stay and Jail Bed Days by Type of Release<sup>3</sup>

Type of Release	Apr - Jun 2010			Apr - Jun 2009		
	Released	Bed Days	ALOS (days)	Released	Bed Days	ALOS (days)
Secured	4,419	15,152	3	4,221	17,064	4
Time Served	1,099	38,975	35	1,202	41,592	35
Unsecured	1,519	9,705	6	1,478	9,946	7
Dismissed	290	13,925	48	292	10,353	35
Probation/Parole	149	7,966	53	208	9,476	46
Other Jurisdiction	1,777	105,226	59	2,361	145,687	62

<sup>2</sup> Average length of stay is determined by averaging the reported ALOS for each group in the FY 2010 MCSO Detention Report. The Detention Report calculates ALOS as (Total Bed Days / Number of Jail Intakes). "Bed days" is calculated as the sum of the reported average daily population. An "intake" is defined as an individual receiving a housing assignment (those who bond out or are otherwise released prior to a housing assignment are not considered intakes).

<sup>3</sup> This table examines ALOS based on the release reason. Length of stay is calculated as the number of days between the commit date and release date as found in the OMS Release Report (OIRRELDT). Only those individuals assigned housing in the jail will be found on the OMS report.

## V. Trends and Forecasting of Jail Population



- ADP is expected to peak at 2,427 in August, followed by a seasonal decline during the latter half of the year and into 2011.