



Criminal Justice Report

Oct - Dec 2010



Prepared by the County Manager's Office

Introduction and Overview

The Board of County Commissioners values the safety of Mecklenburg County residents and documents this as a priority in its 2015 Community Vision. As an organization, Mecklenburg County has specific goals of increasing the safety and security of residents and increasing the efficiency and effectiveness of criminal justice services.

In May 2008, the Board created the Justice and Public Safety Task Force to review the criminal justice system and make recommendations to restore its functional effectiveness. The Board-appointed Justice and Public Safety Task Force produced its final report in November 2008. The report included 16 prioritized recommendations designed to make an effective impact on crime and justice-related activities in Mecklenburg County. The Task Force's fourth recommendation called for the creation of a criminal justice system report that would provide transparent and easily accessible information to the public regarding the efficiency and effectiveness of the criminal justice system. This comprehensive report has been produced to give residents a tool to track the progress of the coordinated effort of the County to increase the efficiency, effectiveness, and accountability of the criminal justice system.

The framework for this and future quarterly and annual versions of **Mecklenburg County Criminal Justice Matters** will examine the major elements of the criminal justice system, including:

- Law Enforcement
- Jail
- Pretrial Services
- Courts
- Prosecution
- Public Defense
- Alternatives to Incarceration
- Community Based Programs

Quarterly reports will highlight key events that have taken place within the system and track the system's progress by providing measures that indicate how each area within the system is performing compared to the same time period the previous year. The annual report will summarize the progress the criminal justice system has made during the year towards achieving outcome goals within each of the six areas. The annual report will vary slightly from the quarterly reports, as it will be focused on specific outcome goals for each area within the criminal justice system.

Each edition of **Mecklenburg County Criminal Justice Matters** will be posted and updated at www.charmeck.org/Departments/County+Managers+Office/CriminalJustice/Home.htm to allow residents and stakeholders to conveniently track progress and share information about the efficiency and effectiveness of the Mecklenburg County criminal justice system.



	Jan - Mar	Apr - Jun	Jul - Sep	Oct - Dec	YTD Average	Reference
Law Enforcement						
Total UCR Part I Reports	9,717	11,081	12,108	11,516	11,106	Fig. 1
UCR Rate (Reports/100k Citizens)	1,009 ¹	1,150	1,257	1,195	1,153	
Jail						
Arrests Processed	10,245	10,681	10,901	10,274	10,525	
Average Daily Population	2,158	2,226	2,272	2,228	2,221	Fig. 2
Average Length of Stay (days)	18.4	18.3	18.7	19.3	18.7	
% Pretrial Population	68%	68%	68%	68%	68%	Fig. 3
% Sentenced Population	11%	12%	11%	11%	11%	Fig. 3
% Federal Population	21%	21%	21%	21%	21%	Fig. 3
Pretrial Services						
Number Interviewed	NA	NA	1,579	1,559	1,569	
Number Released	1,054	1,075	359 ²	250	684	
Average Supervised Daily	1,968	1,933	1,564	946	1,603	
Revocations	131	116	81	58	97	
Magistrate						
Number Charges Recorded	19,045	19,754	20,343	15,648	18,698	
% Charges Given Secured Bond	86%	69%	73%	81%	77%	
% Charges Probable Cause Found	100%	94%	97%	98%	97%	
Superior Court						
Felony Cases Filed	2,555	2,581	2,227	2,317	2,420	Fig. 5
Felony Cases Disposed	2,805	2,286	2,740	2,206	2,509	Fig. 5
Felony Clearance Rate	110%	89%	123%	95%	104%	Fig. 5
% Cases Pending <=365 Days	78%	78%	78%	76%	78%	Fig. 4
% Cases Disposed <=365 Days	78%	80%	76%	79%	78%	Fig. 4
Felony Trials	55	52	69	54	58	
Average Time To Disposition [†]	258	299	256	245	-	
Median Time to Disposition [†]	199	176	186	176	-	
District Court						
Non-DMV Criminal Cases Filed	13,124	15,557	15,635	14,539	14,714	Fig. 6
Non-DMV Criminal Cases Disposed	14,284	13,907	15,316	14,509	14,504	Fig. 6
Non-DMV Criminal Clearance Rate	109%	89%	98%	100%	97%	Fig. 6
% Cases Pending <=365 Days	94%	98%	96%	95%	96%	
% Cases Disposed <=365 Days	98%	99%	96%	97%	98%	
Non-DMV Criminal Cases Trials	309	293	343	266	303	
Average Time To Disposition [†]	129.2	116	112	110	-	
Median Time to Disposition [†]	77	70	70	71	-	
Prosecutor						
Dismissals (with and without leave)	1,499	1,275	1,396	1,202	1,331	Fig. 7
Guilty Pleas Accepted	1,236	943	1,261	925	1,091	Fig. 7
Dismissals following Deferred Prosecution	8	3	6	7	6	
Public Defender						
New Cases Assigned	5,502	5,049	6,868	5,400	5,705	Fig. 8
Cases Closed	5,450	5,049	5,830	5,325	5,414	Fig. 8
Cases per Attorney ³	102	90	116	90	100	
Cases Assigned to Private Attorney	3,959	4,719	4,708	4,304	4,423	
Probation						
Admitted	803	879	1,140	810	908	Fig. 9
Average Population	7,693	7,677	7,870	7,996	7,809	Fig. 9
Probation Violations	1,002	1,040	1,269	1,083	1,099	
Electronic Monitoring						
Average Supervised Daily CMPD	-	-	226	274	-	
% Successful Terminations CMPD	-	-	-	98%	-	
Structured Day						
Admitted	35	17	25	32	27	
Average Supervised Daily	82	84	91	88	86	
% Successful Completing	39%	-	50%	31%	40%	
S.T.E.P. Courts						
Admitted	119	81	62	57	80	
Total Served	353	393	344	286	344	
Successfully Completing Program	50%	51%	51%	55%	52%	

¹ Based on estimated 2010 population 963,363 (Source: Charlotte Chamber of Commerce)

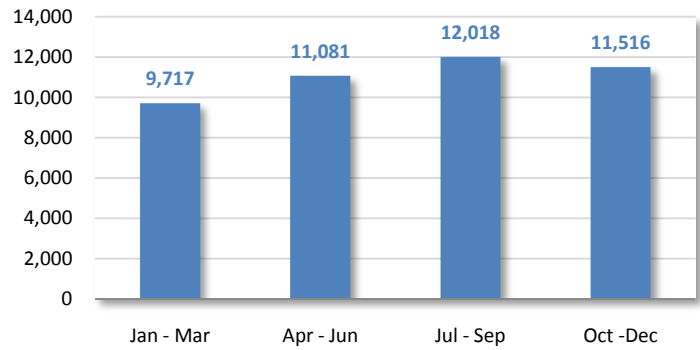
² The decline in releases is a result of policy changes implemented July 2010 restricting eligibility for participation to misdemeanor and traffic offenses. Eligibility criteria are expected to expand in late 2010.

³ Number New Cases Assigned / Number of Attorneys

[†] Data incomplete or unavailable at time of report.

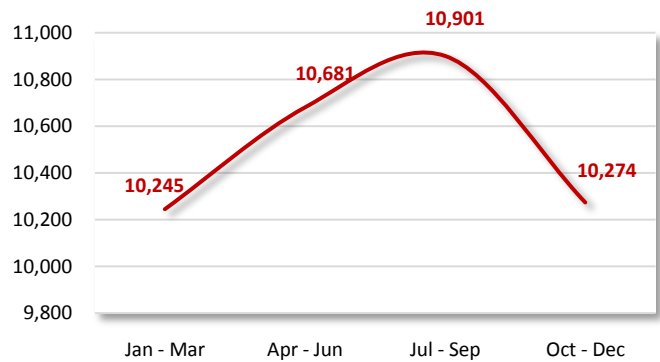
UCR Part I reports declined 4 percent from the previous quarter.

Figure 1. UCR Part I Reports



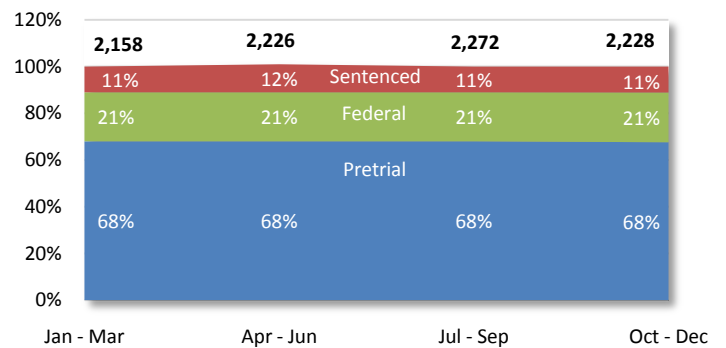
Arrests declined 6 percent from the previous quarter.

Figure 2. Arrests Processed



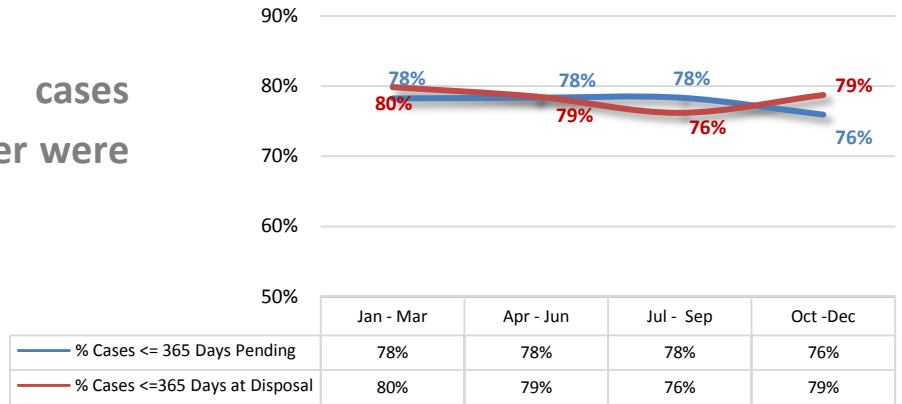
The jail's average daily population was 2,228.

Figure 3. Average Daily Jail Population



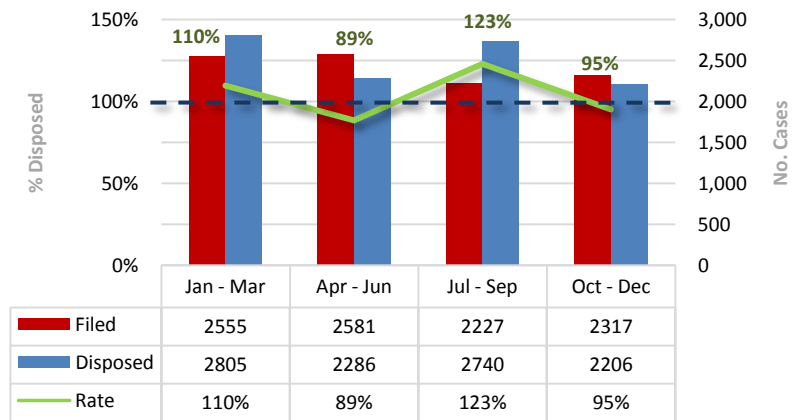
79 percent of felony cases disposed during the quarter were aged 365 days or less.

Figure 4. Disposition and Pending Times- Felonies



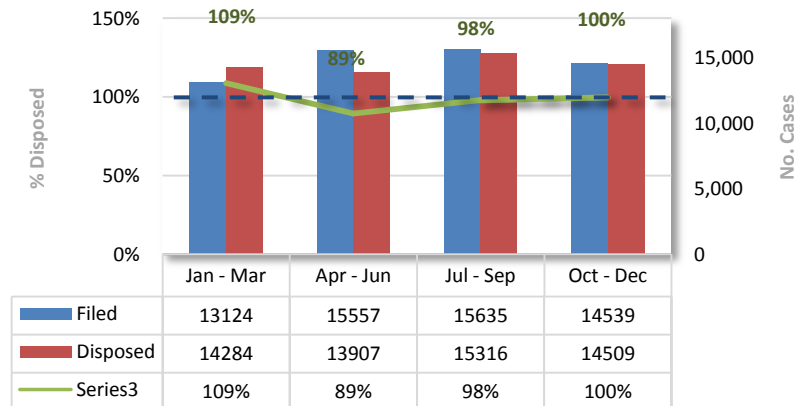
Clearance rate¹ for Superior Court felony cases was 95 percent.

Figure 5. Clearance Rate- Superior Court



Clearance rate¹ for non-motor vehicle criminal cases was 100 percent.

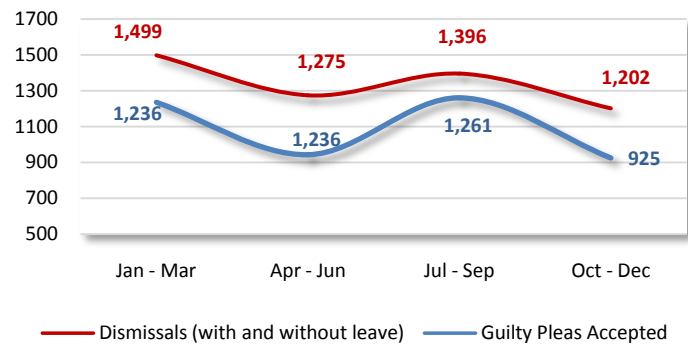
Figure 6. Clearance Rate- District Court



1. Clearance Rate is calculated using the National Center for State Courts recommendation *number of dispositions divided by the number of filings.*

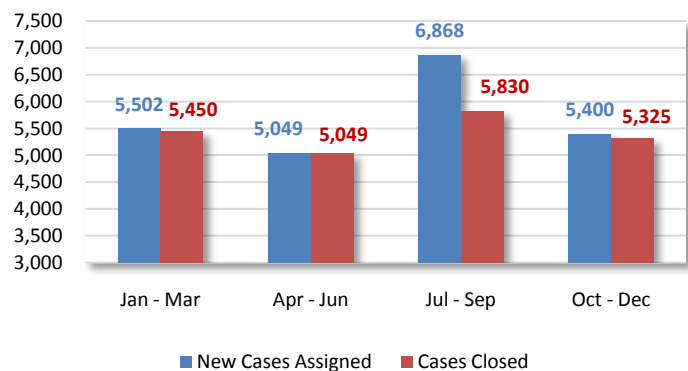
In the past year, approximately 1.2 charges were dismissed per guilty plea accepted.

Figure 7. District Attorney



Overall, cases were closed at a rate of 98 percent of new filings.

Figure 8. Public Defender



The Community Corrections population increased 4 percent from the first quarter of the calendar year.

Figure 9. Community Corrections

