



Criminal Justice Report

July – Sept 2010



Prepared by the County Manager's Office

Introduction and Overview

The Board of County Commissioners values the safety of Mecklenburg County residents and documents this as a priority in its 2015 Community Vision. As an organization, Mecklenburg County has specific goals of increasing the safety and security of residents and increasing the efficiency and effectiveness of criminal justice services.

In May 2008, the Board created the Justice and Public Safety Task Force to review the criminal justice system and make recommendations to restore its functional effectiveness. The Board-appointed Justice and Public Safety Task Force produced its final report in November 2008. The report included 16 prioritized recommendations designed to make an effective impact on crime and justice-related activities in Mecklenburg County. The Task Force's fourth recommendation called for the creation of a criminal justice system report that would provide transparent and easily accessible information to the public regarding the efficiency and effectiveness of the criminal justice system. This comprehensive report has been produced to give residents a tool to track the progress of the coordinated effort of the County to increase the efficiency, effectiveness, and accountability of the criminal justice system.

The framework for this and future quarterly and annual versions of **Mecklenburg County Criminal Justice Matters** will examine the major elements of the criminal justice system, including:

- Law Enforcement
- Jail
- Pretrial Services
- Courts
- Prosecution
- Public Defense
- Alternatives to Incarceration
- Community Based Programs

Quarterly reports will highlight key events that have taken place within the system and track the system's progress by providing measures that indicate how each area within the system is performing compared to the same time period the previous year. The annual report will summarize the progress the criminal justice system has made during the year towards achieving outcome goals within each of the six areas. The annual report will vary slightly from the quarterly reports, as it will be focused on specific outcome goals for each area within the criminal justice system.

Each edition of **Mecklenburg County Criminal Justice Matters** will be posted and updated at www.charmeck.org/Departments/County+Managers+Office/CriminalJustice/Home.htm to allow residents and stakeholders to conveniently track progress and share information about the efficiency and effectiveness of the Mecklenburg County criminal justice system.



	Oct - Dec	Jan - Mar	Apr - Jun	Jul - Sep	YTD Average	Reference
Law Enforcement						
Total UCR Part I Reports	11,788	9,717	11,081	12,108	11,174	Fig. 1
UCR Rate (Reports/100k Citizens)	1,260	1,009 ¹	1,150	1,257	1,169	
Jail						
Arrests Processed	9,675	10,245	10,681	10,901	10,376	
Average Daily Population	2,336	2,158	2,226	2,272	2,248	Fig. 2
Average Length of Stay (days)	20.3	18.4	18.3	18.7	18.9	
% Pretrial Population	71%	68%	68%	68%	69%	Fig. 3
% Sentenced Population	9%	11%	12%	11%	11%	Fig. 3
% Federal Population	20%	21%	21%	21%	21%	Fig. 3
Pretrial Services						
Number Interviewed	NA	NA	NA	1,579		
Number Released	1,101	1,054	1,075	359 ²	897	
Average Supervised Daily	-	1,968	1,933	1,564	1,822	
Revocations	106	131	116	81	109	
Magistrate						
Number Charges Recorded	18,643	19,045	19,754	20,343	19,446	
% Charges Given Secured Bond	91%	86%	69%	73%	80%	
% Charges Probable Cause Found	99%	100%	94%	97%	98%	
Superior Court						
Felony Cases Filed	2,367	2,555	2,581	2,227	2,433	Fig. 5
Felony Cases Disposed	1,925	2,805	2,286	2,740	2,439	Fig. 5
Felony Clearance Rate	81%	110%	89%	123%	100%	Fig. 5
% Cases Pending <=365 Days	80%	78%	78%	78%	79%	Fig. 4
% Cases Disposed <=365 Days	79%	78%	80%	76%	78%	Fig. 4
Felony Trials	45	55	52	69	55	
Average Time To Disposition [†]	261	258	299	256	-	
Median Time to Disposition [†]	211	199	176	186	-	
District Court						
Non-DMV Criminal Cases Filed	13,164	13,124	15,557	15,635	14,370	Fig. 6
Non-DMV Criminal Cases Disposed	13,164	14,284	13,907	15,316	14,168	Fig. 6
Non-DMV Criminal Clearance Rate	100%	109%	89%	98%	99%	Fig. 6
% Cases Pending <=365 Days	94%	94%	98%	96%	95%	
% Cases Disposed <=365 Days	98%	98%	99%	96%	98%	
Non-DMV Criminal Cases Trials	245	309	293	343	298	
Average Time To Disposition [†]	113.2	129.2	116	112	-	
Median Time to Disposition [†]	68	77	70	70	-	
Prosecutor						
Dismissals (with and without leave)	996	1,499	1,275	1,396	1,293	Fig. 7
Guilty Pleas Accepted	870	1,236	943	1,261	1,078	Fig. 7
Dismissals following Deferred Prosecution	5	8	3	6	6	
Public Defender						
New Cases Assigned	5,312	5,502	5,049	6,868	5,682	Fig. 8
Cases Closed	4,845	5,450	5,049	5,830	5,294	Fig. 8
Cases per Attorney ³	-	102	90	116	103	
Cases Assigned to Private Attorney	3,870	3,959	4,719	4,708	4,314	
Probation						
Admitted	735	803	879	1,140	889	Fig. 9
Average Population	7,459	7,429	7,326	7,305	7,380	Fig. 9
Probation Violations	342	310	334	347	333	
Electronic Monitoring						
Average Supervised Daily CMPD	-	-	-	226	-	
% Successful Terminations CMPD	-	-	-	-	-	
Structured Day						
Admitted	21	35	17	25	25	
Average Supervised Daily	70	82	84	91	82	
% Successful Completing	56%	39%	-	50%	48%	
S.T.E.P. Courts						
Admitted	121	119	81	62	96	
Total Served	397	353	393	344	372	
% Successfully Completing Program	44%	50%	51%	51%	49%	

¹ Based on estimated 2010 population 963,363 (Source: Charlotte Chamber of Commerce)

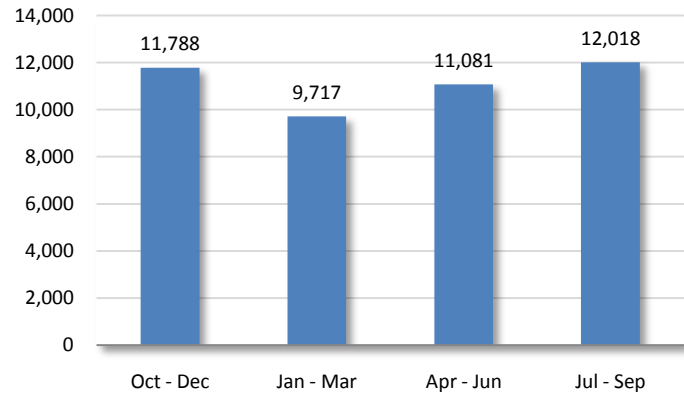
² The decline in releases is a result of policy changes implemented July 2010 restricting eligibility for participation to misdemeanor and traffic offenses. Eligibility criteria are expected to expand in late 2010.

³ Number New Cases Assigned / Number of Attorneys

[†] Data incomplete or unavailable at time of report.

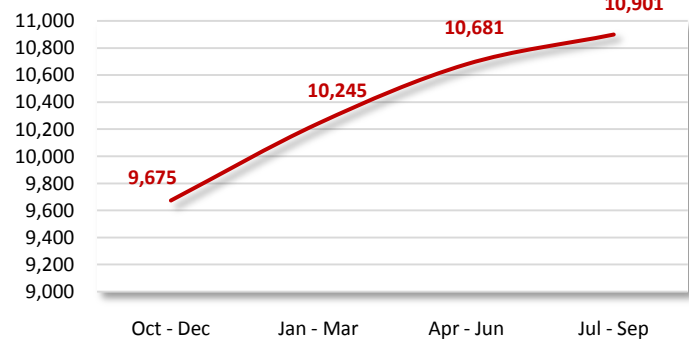
12,018 UCR Part I reports were recorded during the first quarter of FY11.

Figure 1. UCR Part I Reports



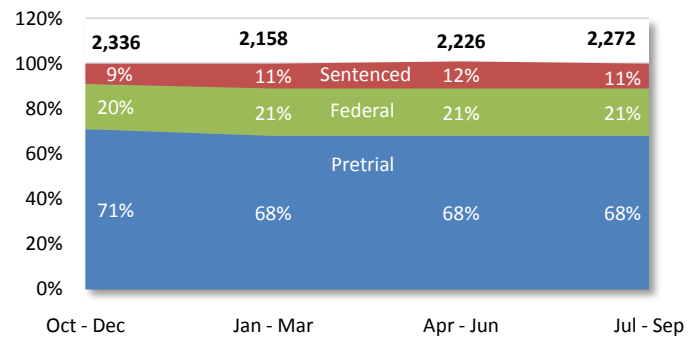
Arrests reached a 12-month peak of 10,901 during the first quarter of FY11; a one percent increase from the same quarter last year.

Figure 2. Arrests Processed



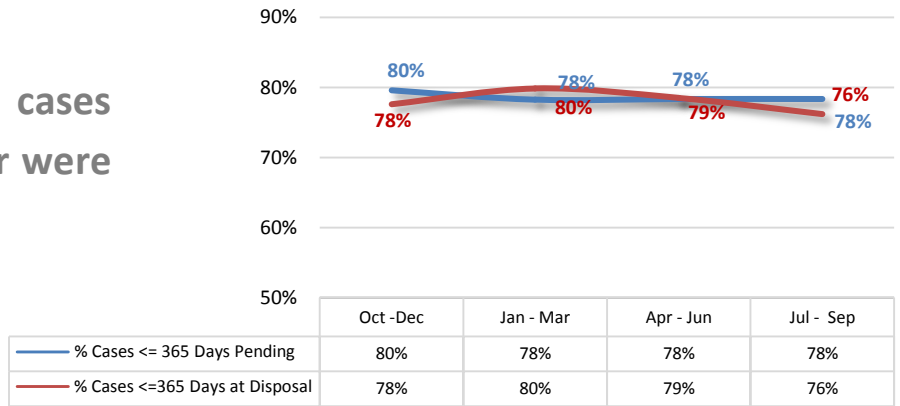
The jail's average daily population was 2,272.

Figure 3. Average Daily Jail Population



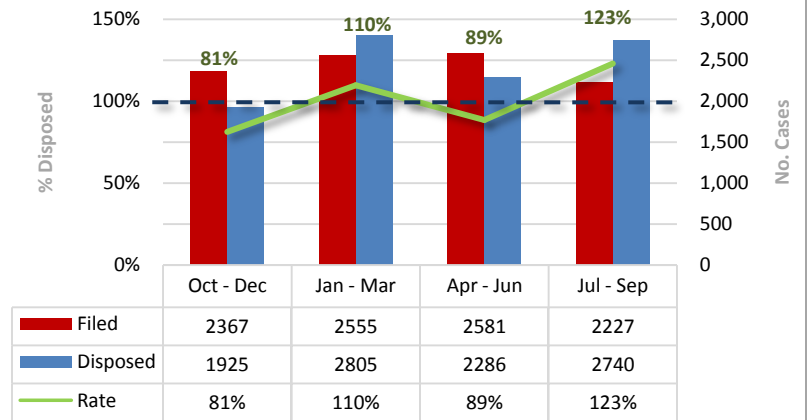
76 percent of felony cases disposed during the quarter were aged 365 days or less.

Figure 4. Disposition and Pending Times- Felonies



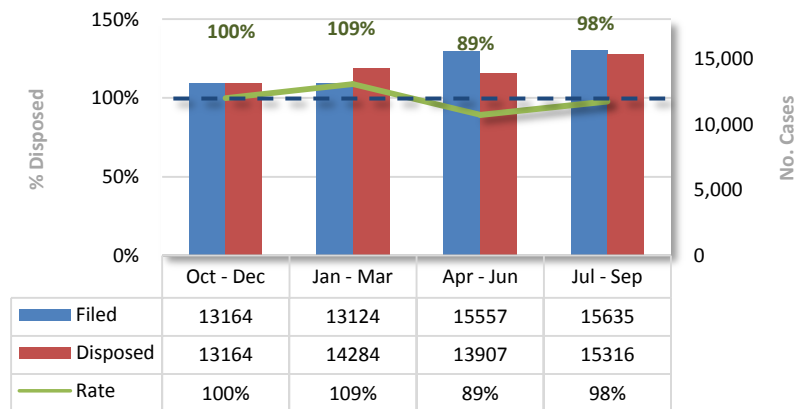
Clearance rate¹ for Superior Court felony cases was 123 percent.

Figure 5. Clearance Rate- Superior Court



Clearance rate¹ for non-motor vehicle criminal cases was 98 percent.

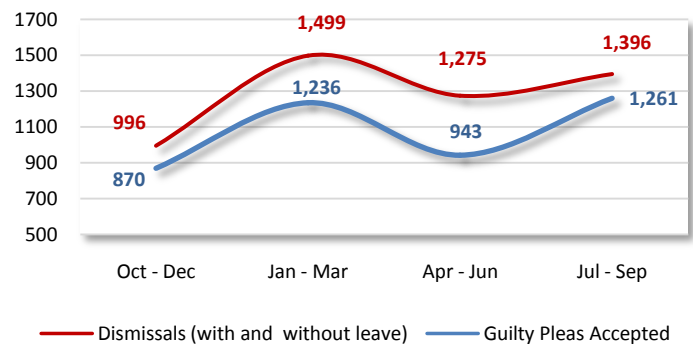
Figure 6. Clearance Rate- District Court



1. Clearance Rate is calculated using the National Center for State Courts recommendation *number of dispositions divided by the number of filings.*

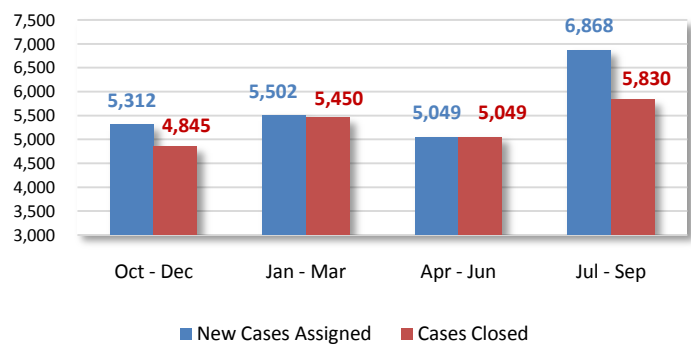
In the past year, approximately 1.2 charges were dismissed per guilty plea accepted.

Figure 7. District Attorney



Overall, cases were closed at a rate of 93 percent of filings.

Figure 8. Public Defender



Admissions increased by slightly more than half, though the overall population remained relatively unchanged.

Figure 9. Community Corrections

