



Criminal Justice Report

Apr - Jun 2010



Prepared by the County Manager's Office

Introduction and Overview

The Board of County Commissioners values the safety of Mecklenburg County residents and documents this as a priority in its 2015 Community Vision. As an organization, Mecklenburg County has specific goals of increasing the safety and security of residents and increasing the efficiency and effectiveness of criminal justice services.

In May 2008, the Board created the Justice and Public Safety Task Force to review the criminal justice system and make recommendations to restore its functional effectiveness. The Board-appointed Justice and Public Safety Task Force produced its final report in November 2008. The report included 16 prioritized recommendations designed to make an effective impact on crime and justice-related activities in Mecklenburg County. The Task Force's fourth recommendation called for the creation of a criminal justice system report that would provide transparent and easily accessible information to the public regarding the efficiency and effectiveness of the criminal justice system. This comprehensive report has been produced to give residents a tool to track the progress of the coordinated effort of the County to increase the efficiency, effectiveness, and accountability of the criminal justice system.

The framework for this and future quarterly and annual versions of **Mecklenburg County Criminal Justice Matters** will examine the major elements of the criminal justice system, including:

- Law Enforcement
- Jail
- Pretrial Services
- Courts
- Prosecution
- Public Defense
- Alternatives to Incarceration
- Community Based Programs

Quarterly reports will highlight key events that have taken place within the system and track the system's progress by providing measures that indicate how each area within the system is performing compared to the same time period the previous year. The annual report will summarize the progress the criminal justice system has made during the year towards achieving outcome goals within each of the six areas. The annual report will vary slightly from the quarterly reports, as it will be focused on specific outcome goals for each area within the criminal justice system.

Each edition of **Mecklenburg County Criminal Justice Matters** will be posted and updated at www.charmeck.org/Departments/County+Managers+Office/CriminalJustice/Home.htm to allow residents and stakeholders to conveniently track progress and share information about the efficiency and effectiveness of the Mecklenburg County criminal justice system.



	Jul – Sep	Oct - Dec	Jan - Mar	Apr - Jun	YTD Average	Reference
Law Enforcement						
Total UCR Part I Reports	12,635	11,788	9,717	†	-	
UCR Rate (Reports/100k Citizens)	1,351	1,260	1,009 ¹	-	-	
Jail						
Arrests Processed	10,781	9,675	10,245	10,681	10,346	
Average Daily Population	2,324	2,336	2,158	2,226	2,261	Fig. 1
Average Length of Stay (days)	18.3	20.3	18.4	18.3	18.8	
% Pretrial Population ²	72%	71%	68%	68%	70%	Fig. 2
% Sentenced Population ²	10%	9%	11%	12%	11%	Fig. 2
% Federal Population ²	20%	20%	21%	21%	21%	Fig. 2
Pretrial Services						
Number Interviewed	11,031	9,881	9,942	10,688	10,386	
Number Released	1,283	1,101	1,054	1,075	1,128	
Average Supervised Daily	-	-	1,968	1,933	1,951	
Revocations	115	106	131	116	117	
Magistrate						
Number Charges Recorded	21,148	18,643	19,045	†	-	
% Charges Given Secured Bond	91%	91%	86%	-	-	
% Charges Probable Cause Found ²	99%	99%	100%	-	-	
Superior Court						
Felony Cases Filed	2,539	2,367	2,555	2,581	2,511	Fig. 4
Felony Cases Disposed	2,730	1,925	2,805	2,286	2,437	Fig. 4
Felony Clearance Rate	108%	81%	110%	89%	97%	Fig. 4
% Cases Pending <=365 Days	80%	80%	78%	78%	84%	Fig. 3
% Cases Disposed <=365 Days	74%	79%	78%	80%	83%	Fig. 3
Felony Trials	72	45	55	52	56	
Average Time To Disposition [†]	264	261	258	299	-	
Median Time to Disposition [†]	233	211	199	176	-	
District Court						
Non-DMV Criminal Cases Filed	14,667	13,164	13,124	15,557	14,128	Fig. 5
Non-DMV Criminal Cases Disposed	15,350	13,164	14,284	13,907	14,176	Fig. 5
Non-DMV Criminal Clearance Rate	105%	100%	109%	89%	101%	Fig. 5
% Cases Pending <=365 Days	94%	94%	94%	98%	95%	
% Cases Disposed <=365 Days	93%	98%	98%	99%	97%	
Non-DMV Criminal Cases Trials	316	245	309	293	291	
Average Time To Disposition [†]	114	113.2	129.2	116	-	
Median Time to Disposition [†]	66	68	77	70	-	
Prosecutor						
Dismissals (with and without leave)	1,397	996	1,499	1,275	1,292	
Guilty Pleas Accepted	1,243	870	1,236	943	1,073	
Dismissals following Deferred Prosecution	6	5	8	3	6	
Public Defender						
New Cases Assigned	6,862	5,312	5,502	5,049	5,681	
Cases Closed	5,444	4,845	5,450	5,049	5,197	
Cases per Attorney ³	-	-	102	90	96	
Cases Assigned to Private Attorney	4,205	3,870	3,959	4,719	4,188	
Probation						
Admitted	-	-	-	†	-	
Average Supervised Daily	-	-	-	-	-	
Probation Violations	-	-	-	-	-	
Electronic Monitoring						
Admitted CMPD	-	-	-	†	-	
Average Supervised Daily CMPD	-	-	-	-	-	
% Successful Terminations CMPD	-	-	-	-	-	
Structured Day						
Admitted	21	21	35	17	94	
Average Supervised Daily	62	70	82	84	75	
% Successful Completing	42%	56%	39%	-	46%	
S.T.E.P. Courts						
Admitted	142	121	119	81	116	
Total Served	413	397	353	393	389	
% Successfully Completing Program	46%	44%	50%	51%	48%	

¹ Based on estimated 2010 population 963,363 (Source: Charlotte Chamber of Commerce)

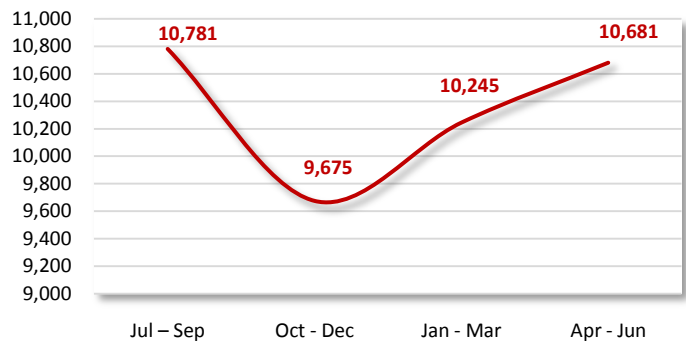
² Values are rounded.

³ Number New Cases Assigned / Number of Attorneys

† Data incomplete or unavailable at time of report.

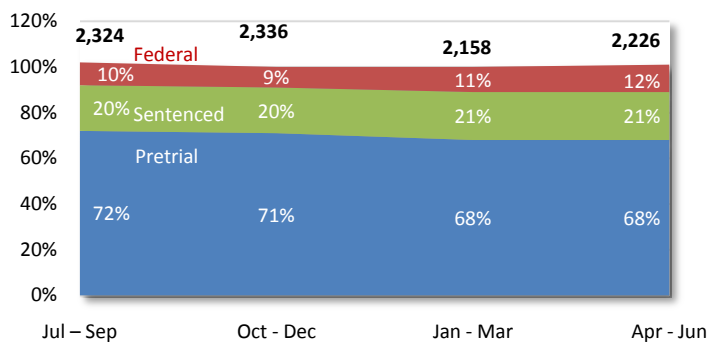
On average 10,346 arrests were processed each quarter of FY10.

Figure 1. Arrests Processed



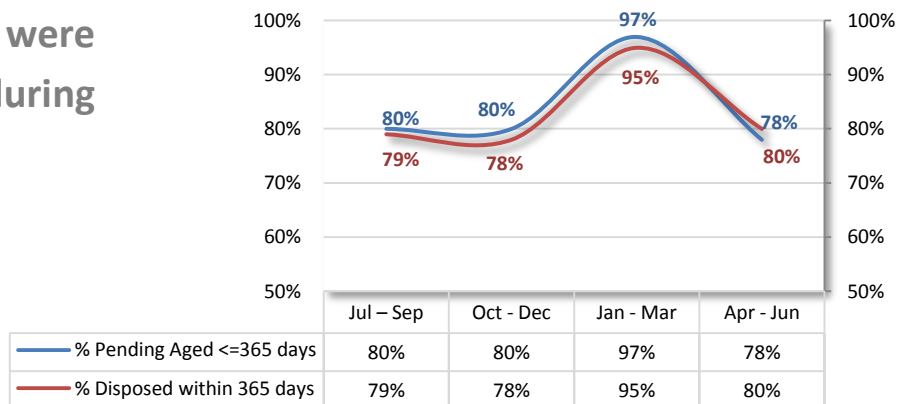
The jail's average daily population was 2,274

Figure 2. Average Daily Jail Population



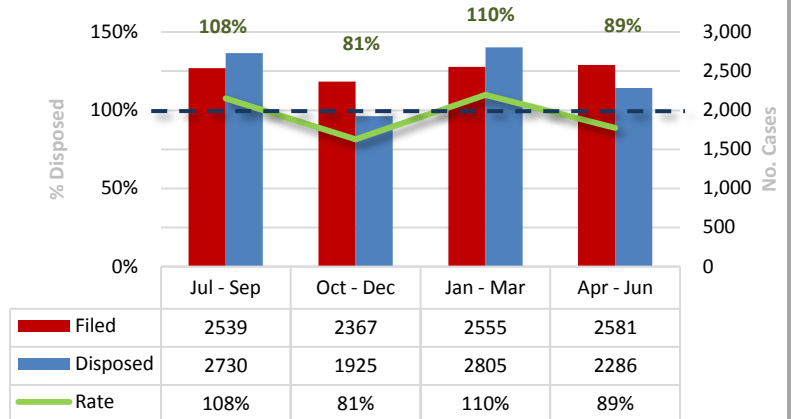
85 percent of felony cases were disposed within 365 days during FY 2010.

Figure 3. Pending and Disposition Times- Felonies



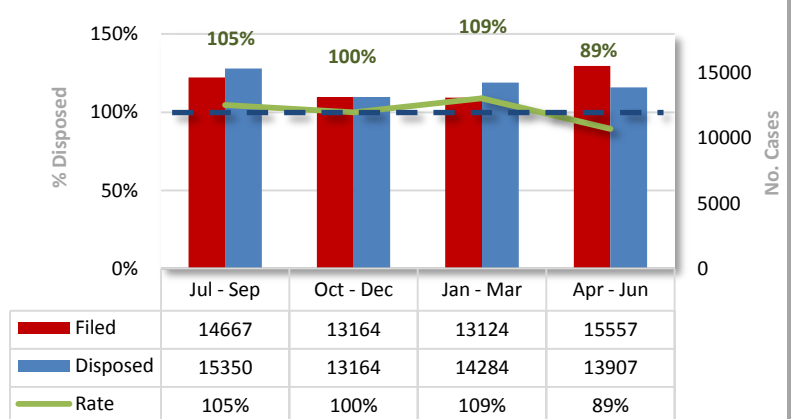
Average clearance rate¹ for Superior Court felony cases exceeded was 97 percent.

Figure 4. Clearance Rate- Superior Court



The clearance rate¹ for non-motor vehicle criminal cases exceeded 100 percent.

Figure 5. Clearance Rate- District Court



1. Clearance Rate is calculated using the National Center for State Courts recommendation *number of dispositions divided by the number of filings*.