



SmartZone Metric Report

R.A.D.I.O
Charlotte/Mecklenburg P25

July 2011



Table of Contents

July-2011

	Page
Summary Sheet	1
System Push To Talks	2
P25 Device 5_9s Chart	3
P25 Site Resource Chart	4
P25 Site Calls Chart	5
First week all P25 Site Charts	6
First week P25 Cause Action Plan	7
Second week all P25 Site Charts	8
Second week P25 Cause Action Plan	9
Third week all P25 Site Charts	10
Third week P25 Cause Action Plan	11
Fourth week all P25 Site Charts	12
Fourth week P25 Cause Action Plan	13
Fifth week all P25 Site Charts	14
Fifth week P25 Cause Action Plan	15
SIMULCAST Site Resource Chart	16
SIMULCAST Site Calls Chart	17
First week all SIMULCAST Site Charts	18
First week SIMULCAST Cause Action Plan	19
Second week all SIMULCAST Site Charts	20
Second week SIMULCAST Cause Action Plan	21
Third week all SIMULCAST Site Charts	22
Third week SIMULCAST Cause Action Plan	23
Fourth week all SIMULCAST Site Charts	24
Fourth week SIMULCAST Cause Action Plan	25
Fifth week all SIMULCAST Site Charts	26
Fifth week SIMULCAST Cause Action Plan	27
Case Report	28
Calendar	Last Page

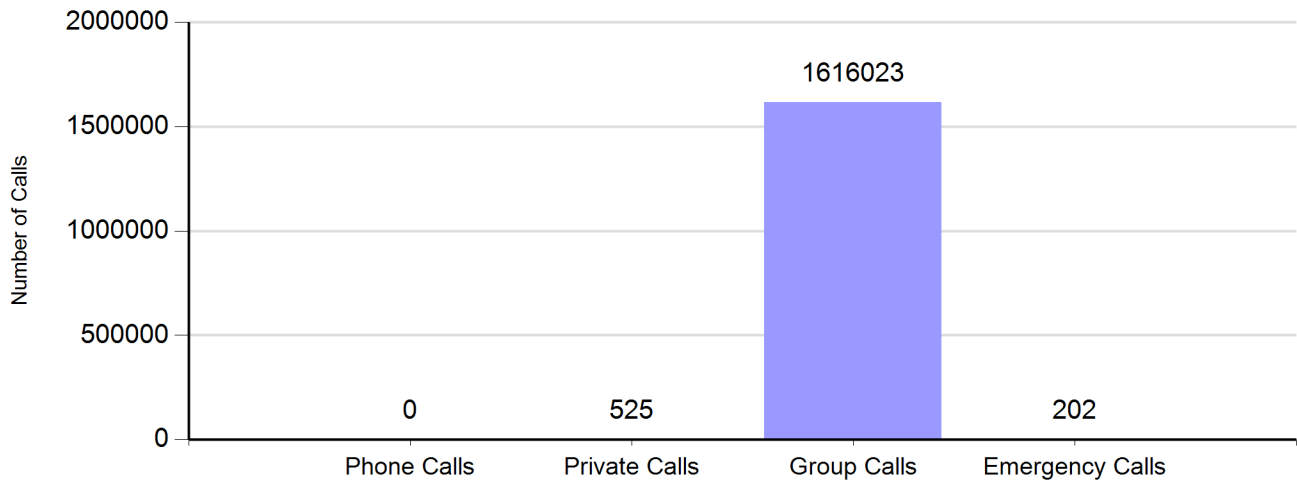
R.A.D.I.O Summary		
Charlotte/Mecklenburg P25 and SIMULCAST System		
July-2011		
Cases	42	
System Push To Talks	2,691,603	

Charlotte/Mecklenburg P2 Site		
Unplanned Nines	6.8	Comments Equals 99.99998% Available
Nines without RFI	7.5	Equals 99.999995% Available
P25 Calls	94,007	
No Site Resouce Count	0	

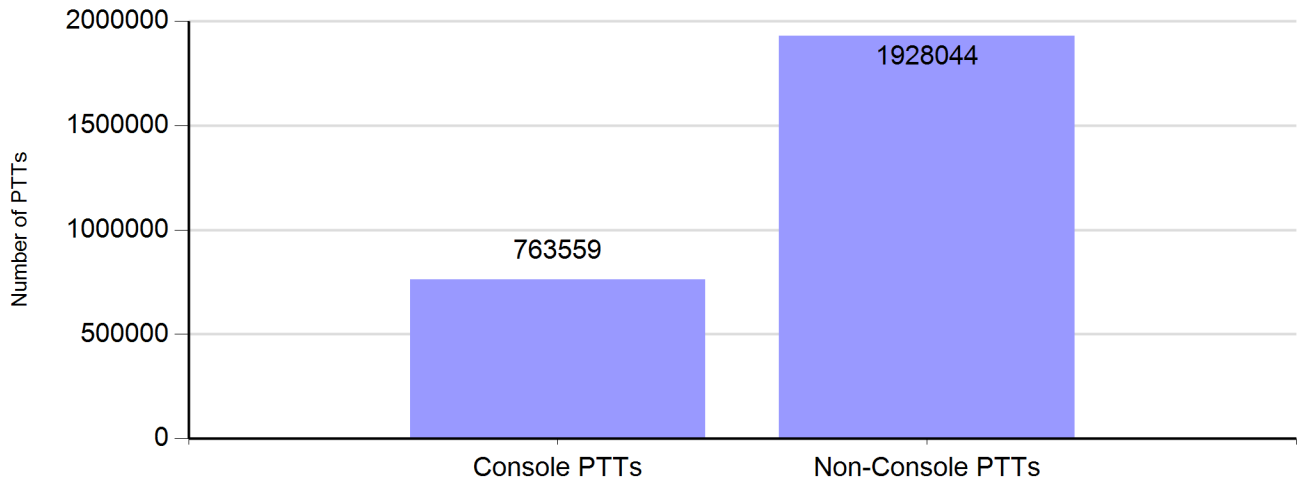
Charlotte/Mecklenburg SIMULCAST Site		
Unplanned Nines	5.4	Comments Equals 99.9994 Available
Nines without RFI	6.9	Equals 99.99999% Available
SIMULCAST Calls	1,425,426	
No Site Resouce Count	0	

Zone Call Report

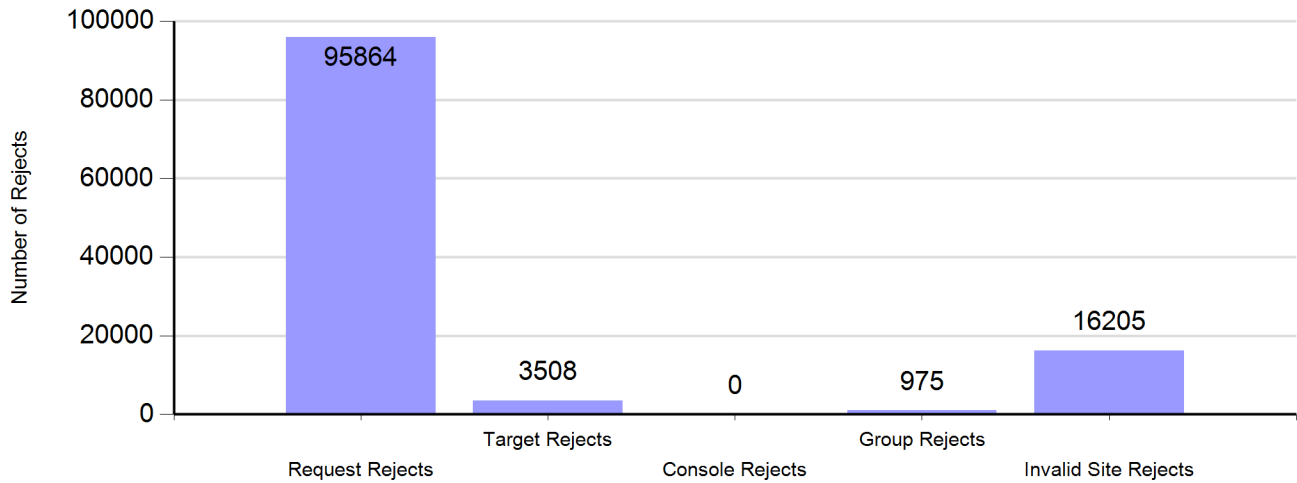
Number of Calls by Type



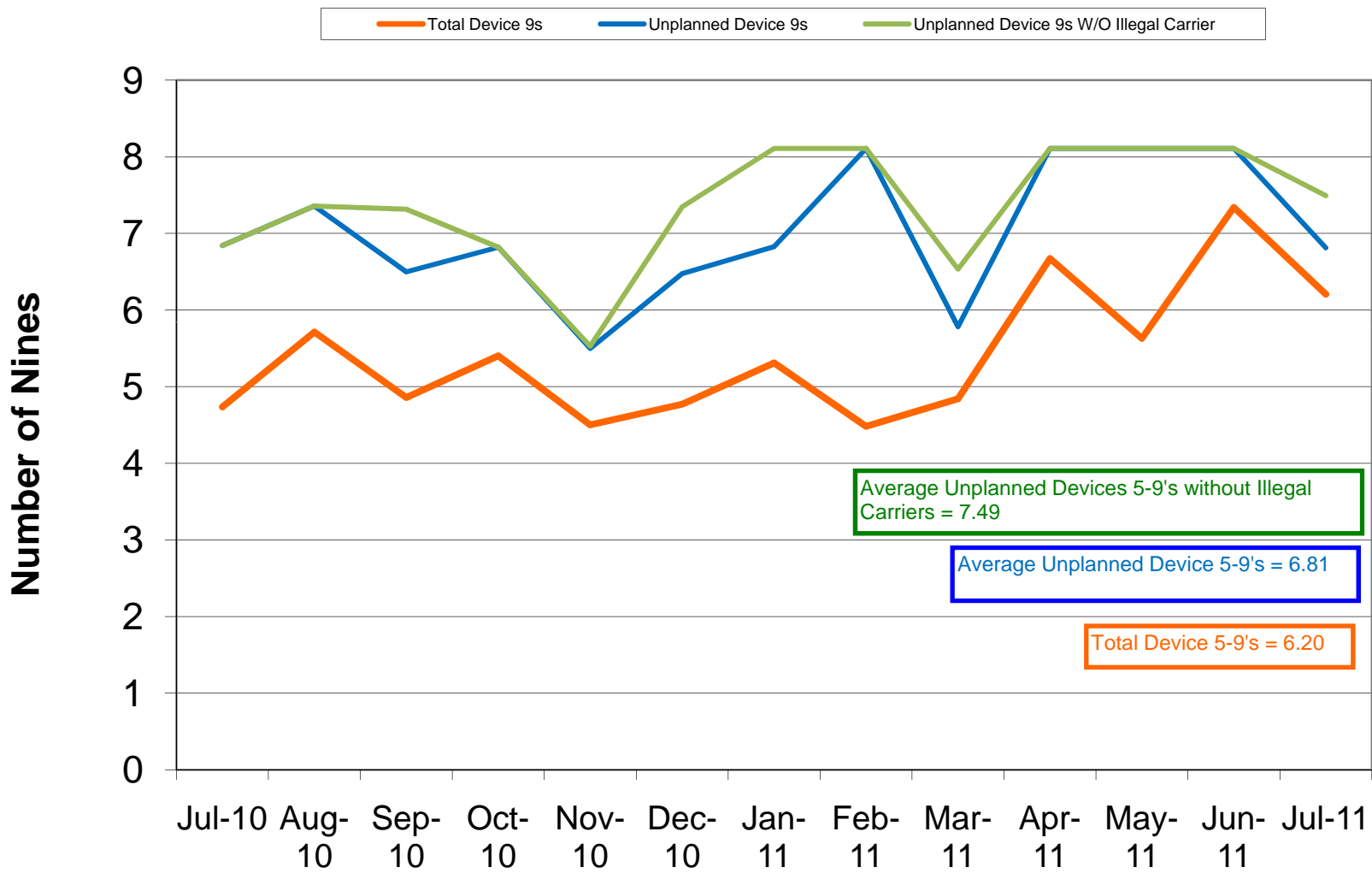
Number of Zone PTTs



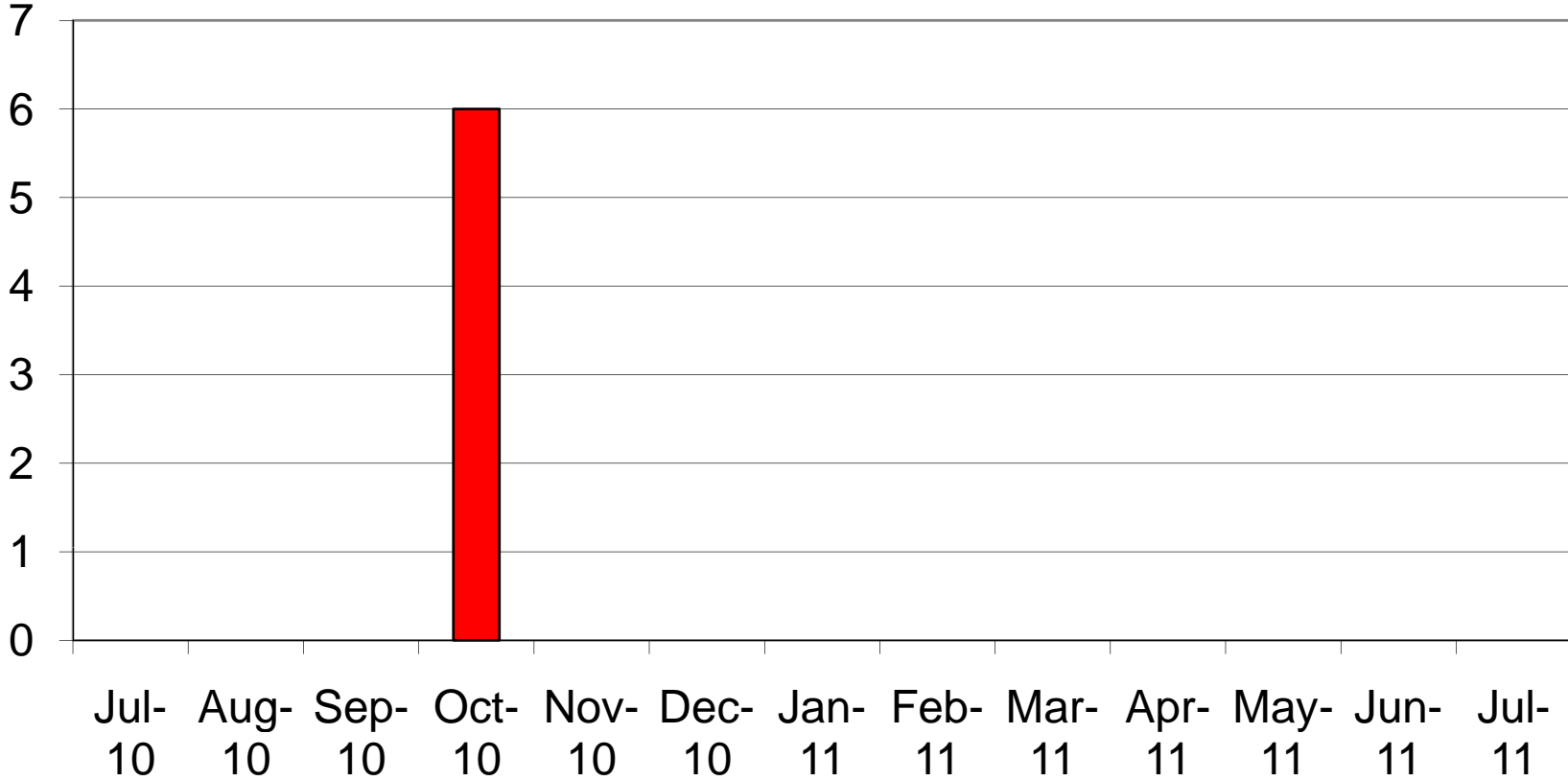
Reasons for Reject



Charlotte/Mecklenburg P25 5-9's Device Availability July 2011

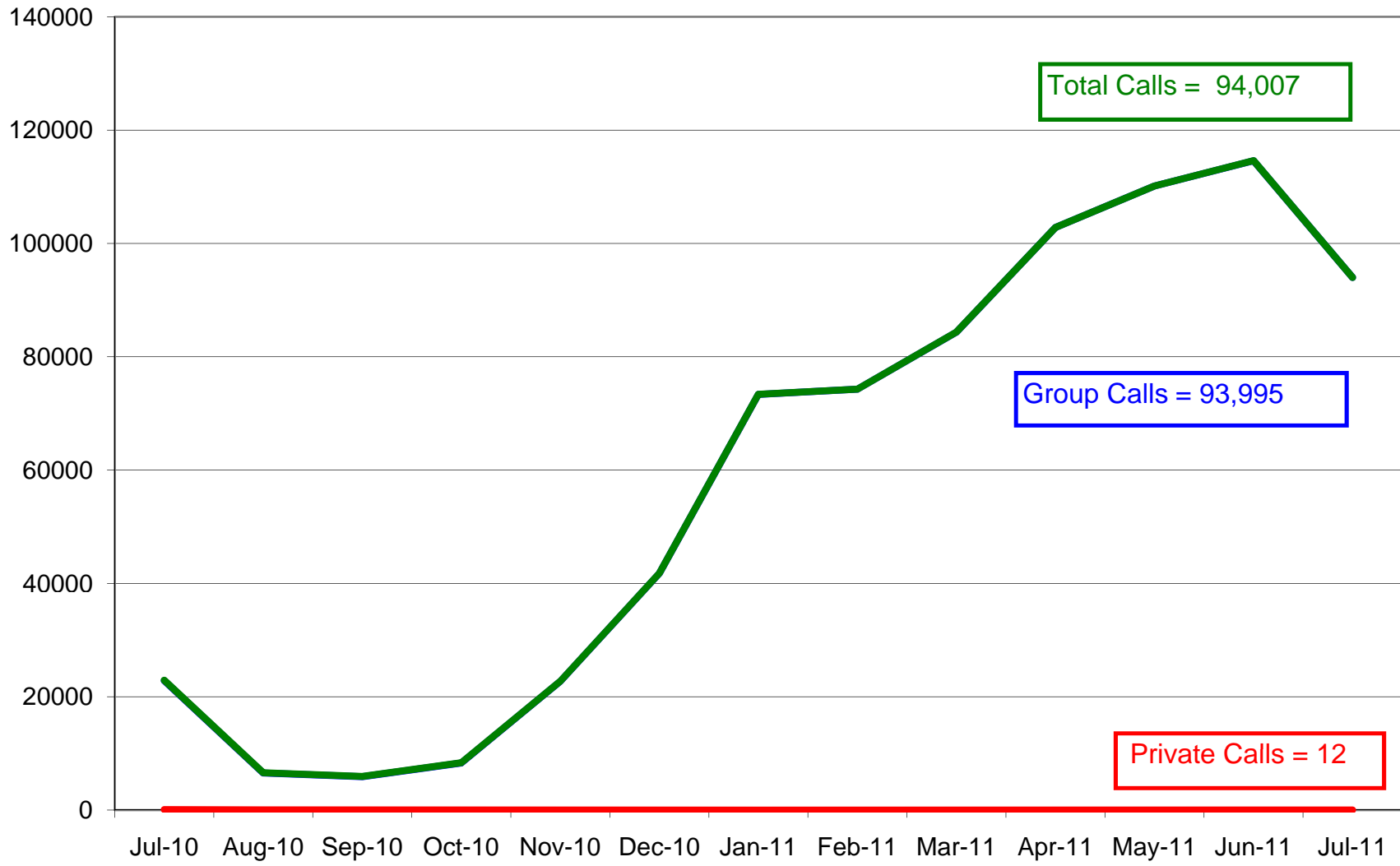


Charlotte/ Mecklenburg P25 No Site Resources July 2011



Charlotte/Mecklenburg P25 System Calls July 2011

Group Private Total

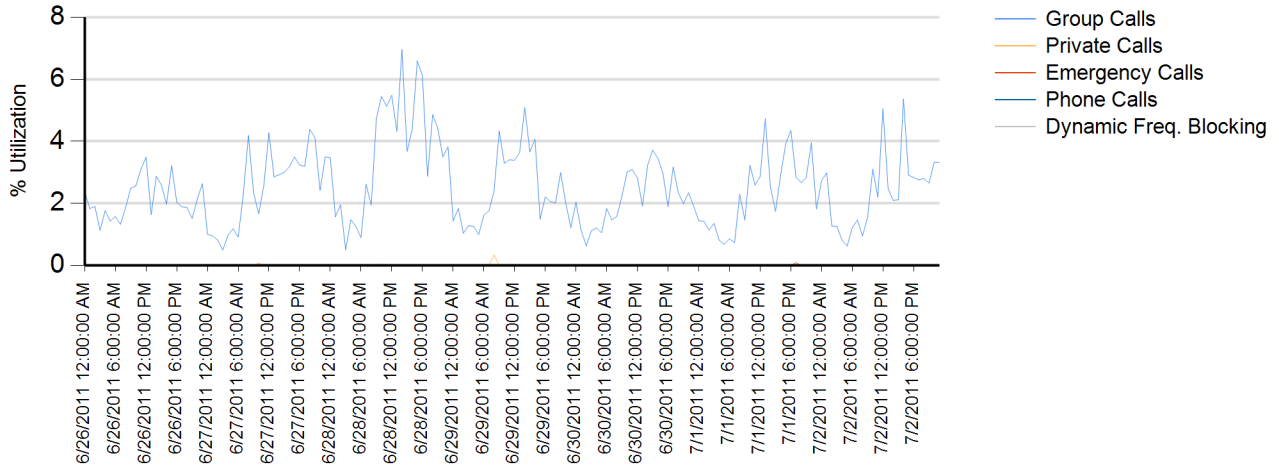


Site Report

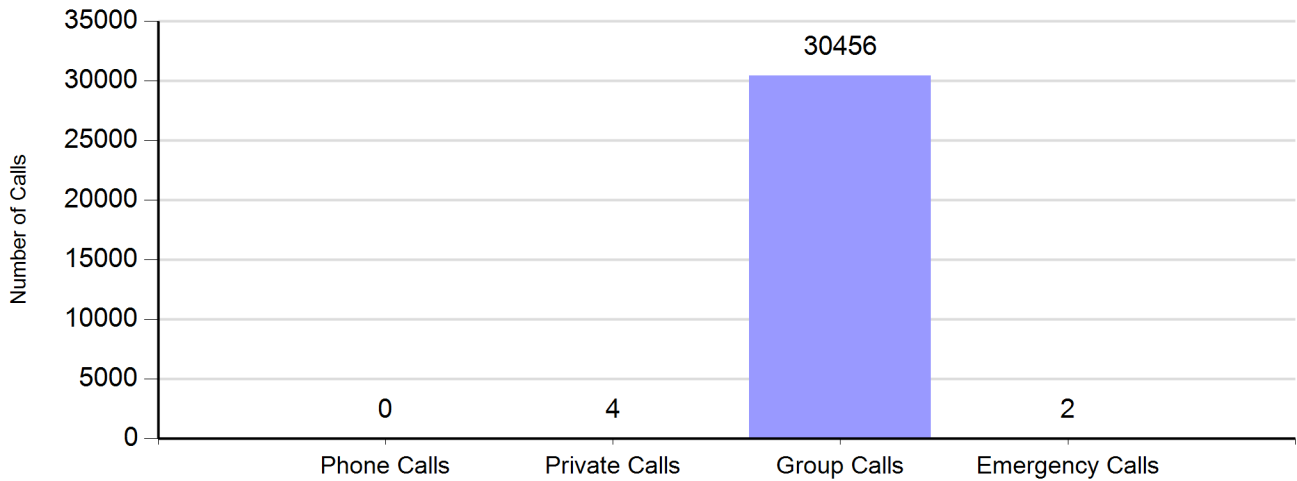
Zone: CHARLOT - Site: Matthews Prime

Sunday, June 26, 2011 12:00:00 AM - Saturday, July 02, 2011 11:59:59 PM

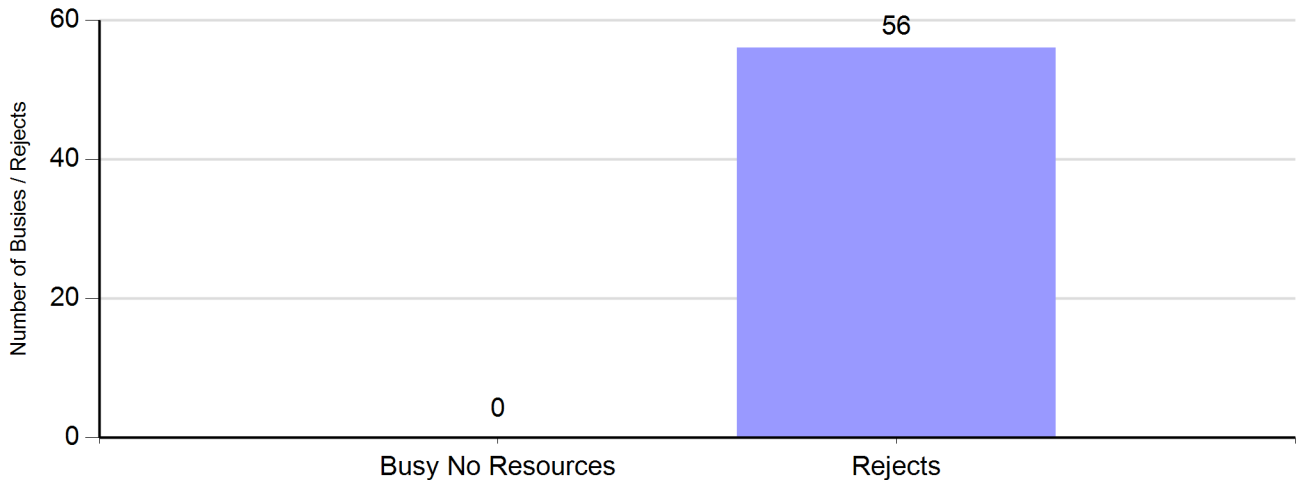
Channel Utilization



Number of Calls by Type



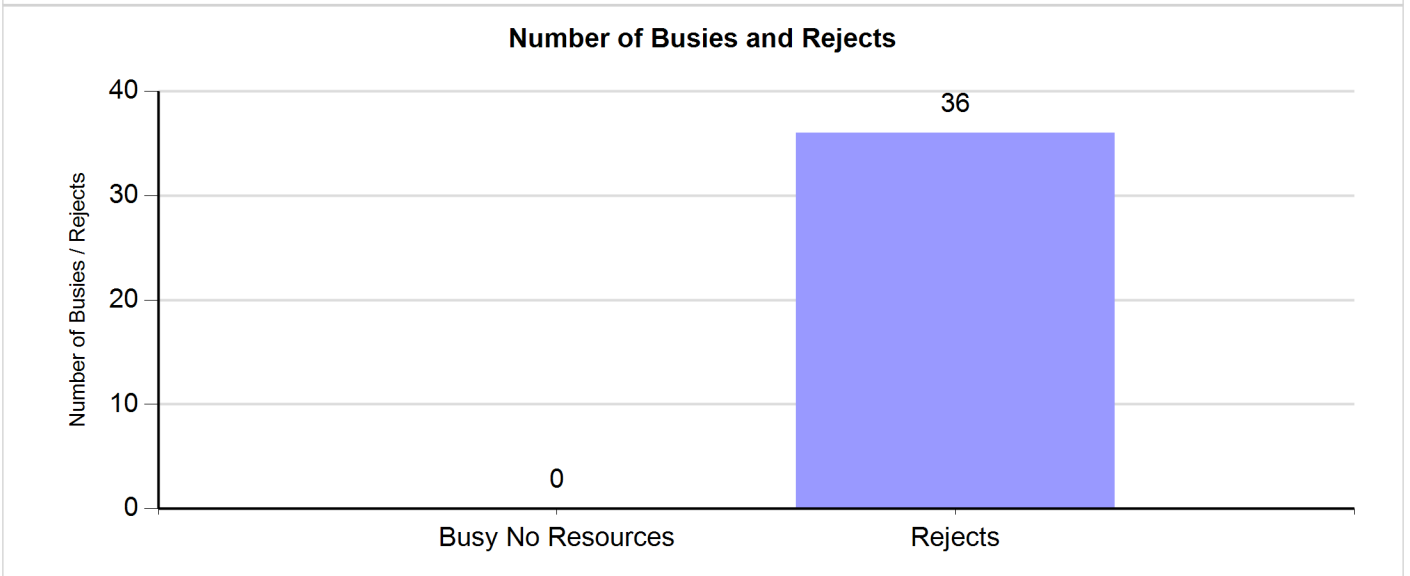
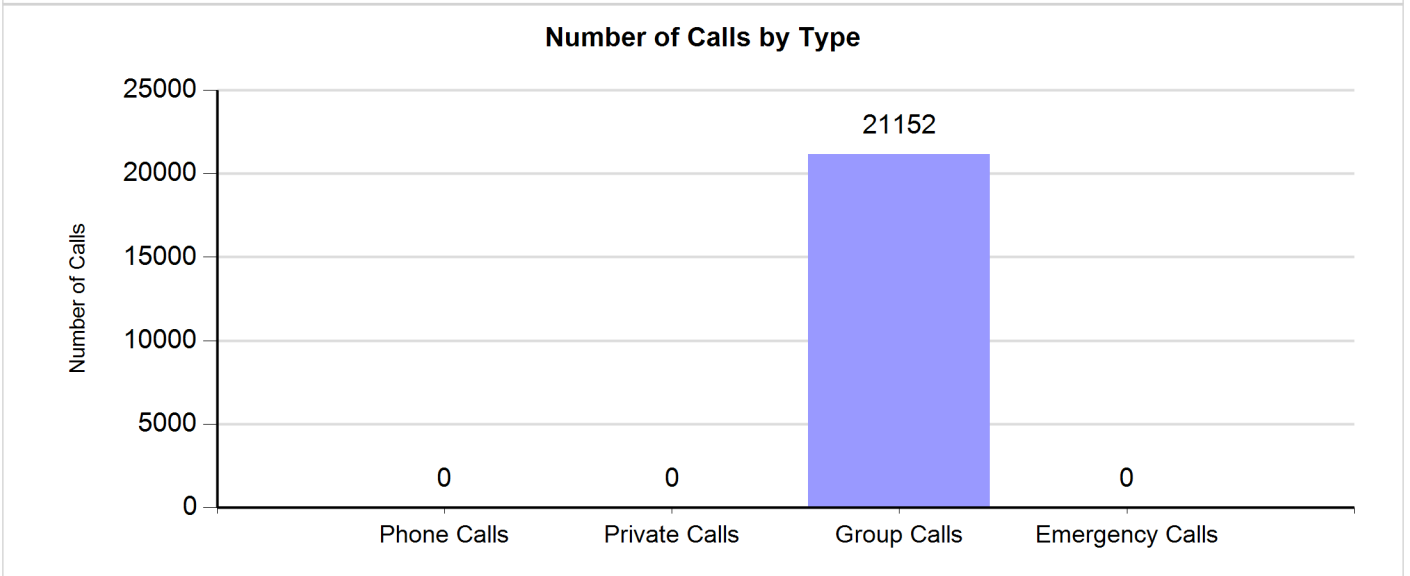
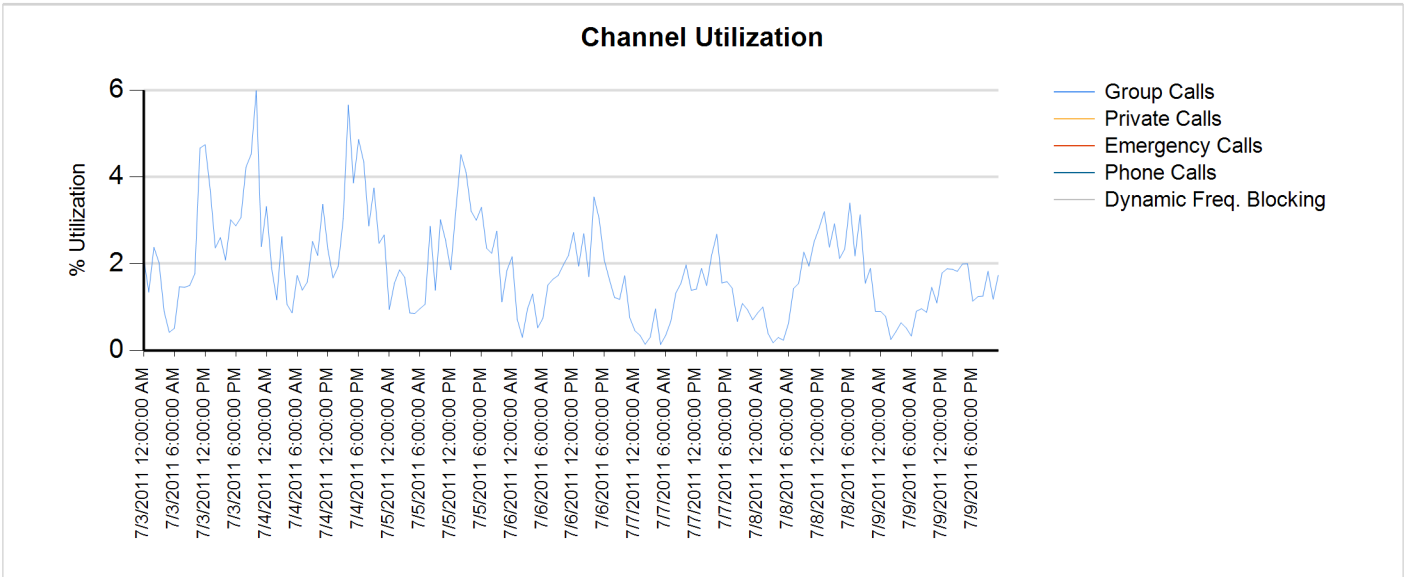
Number of Buses and Rejects



Site Report

Zone: CHARLOT - Site: Matthews Prime

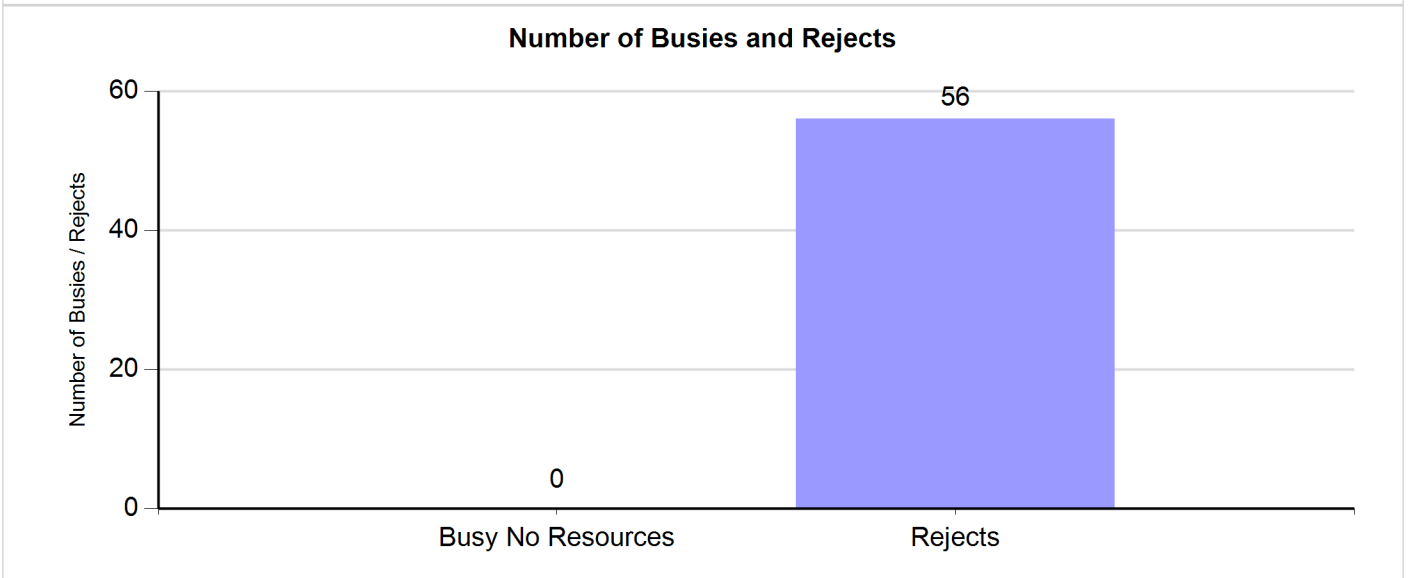
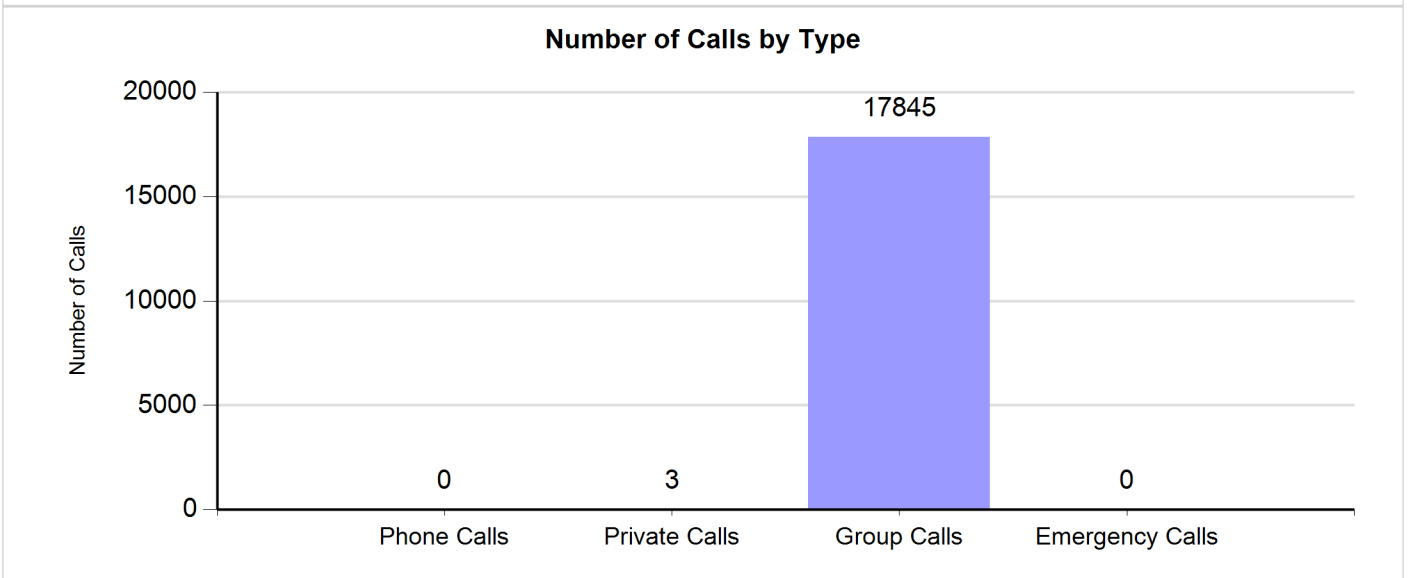
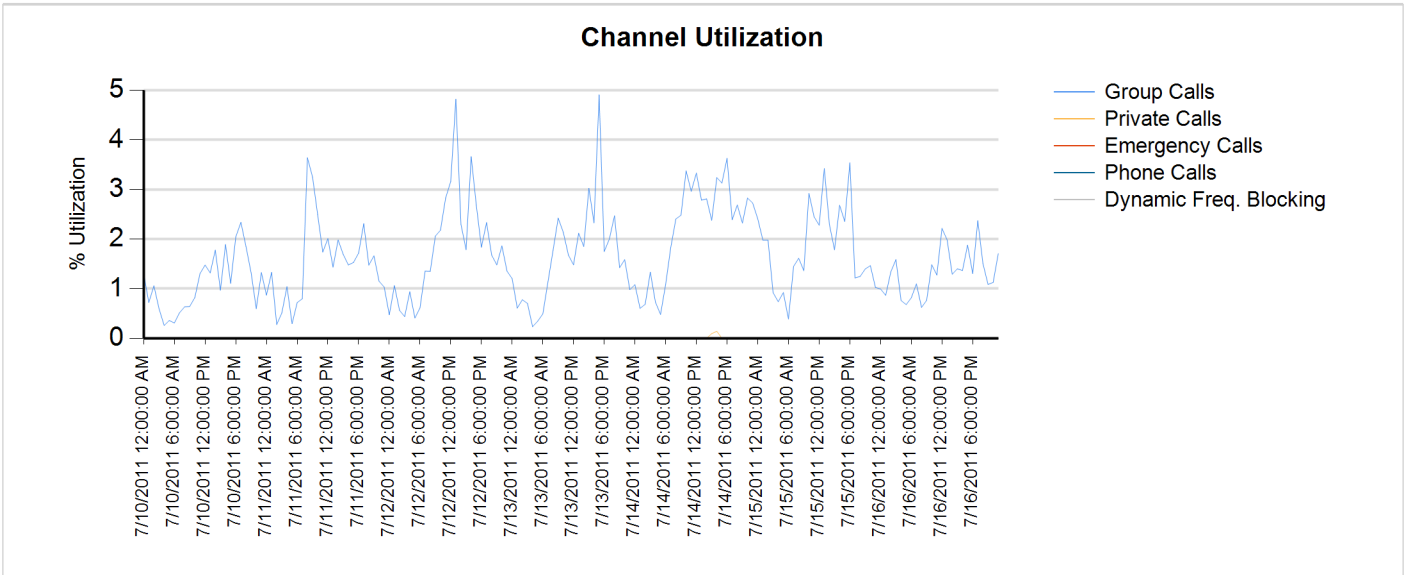
Sunday, July 03, 2011 12:00:00 AM - Saturday, July 09, 2011 11:59:59 PM



Site Report

Zone: CHARLOT - Site: Matthews Prime

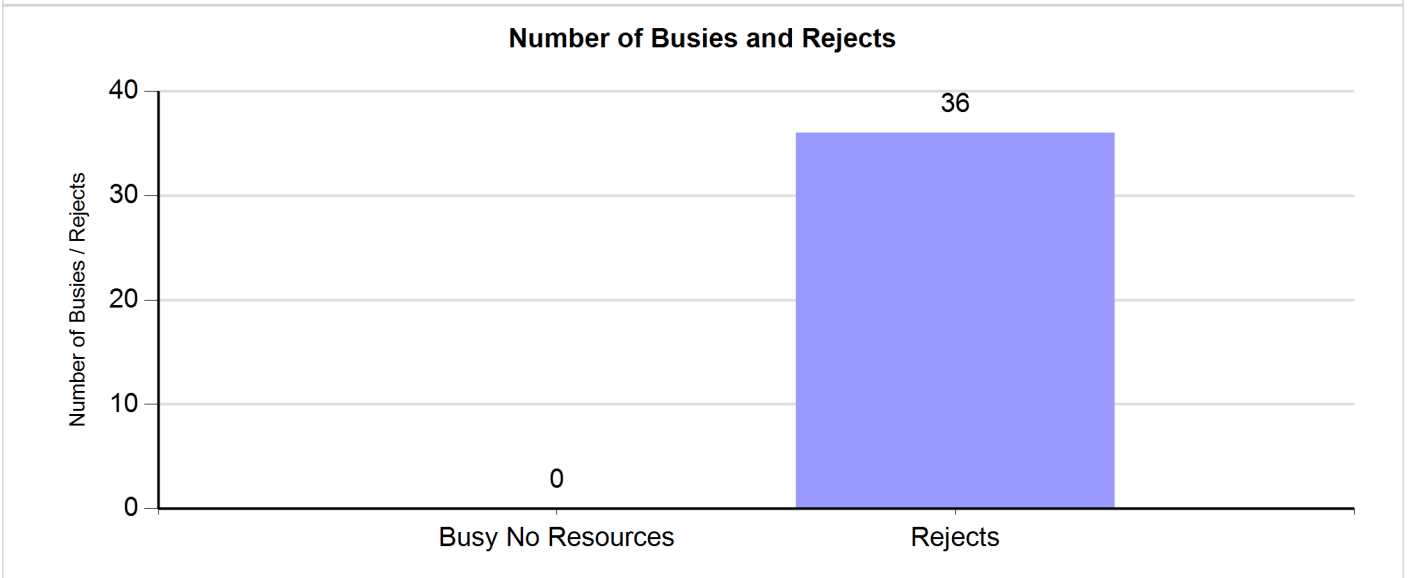
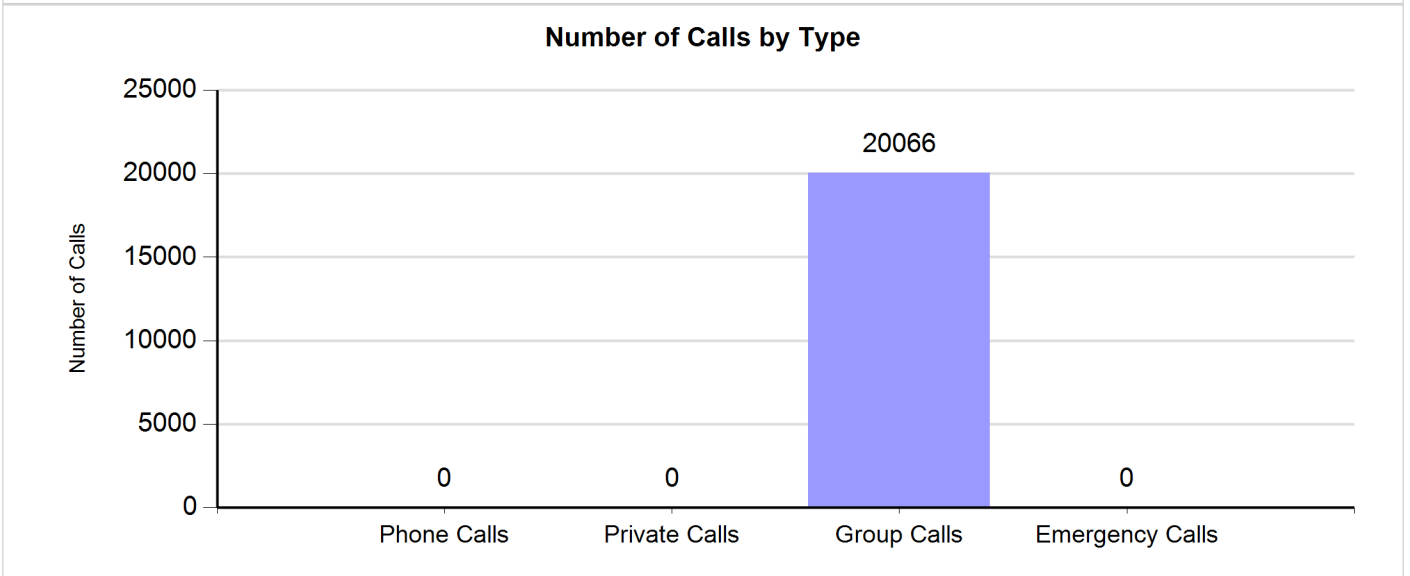
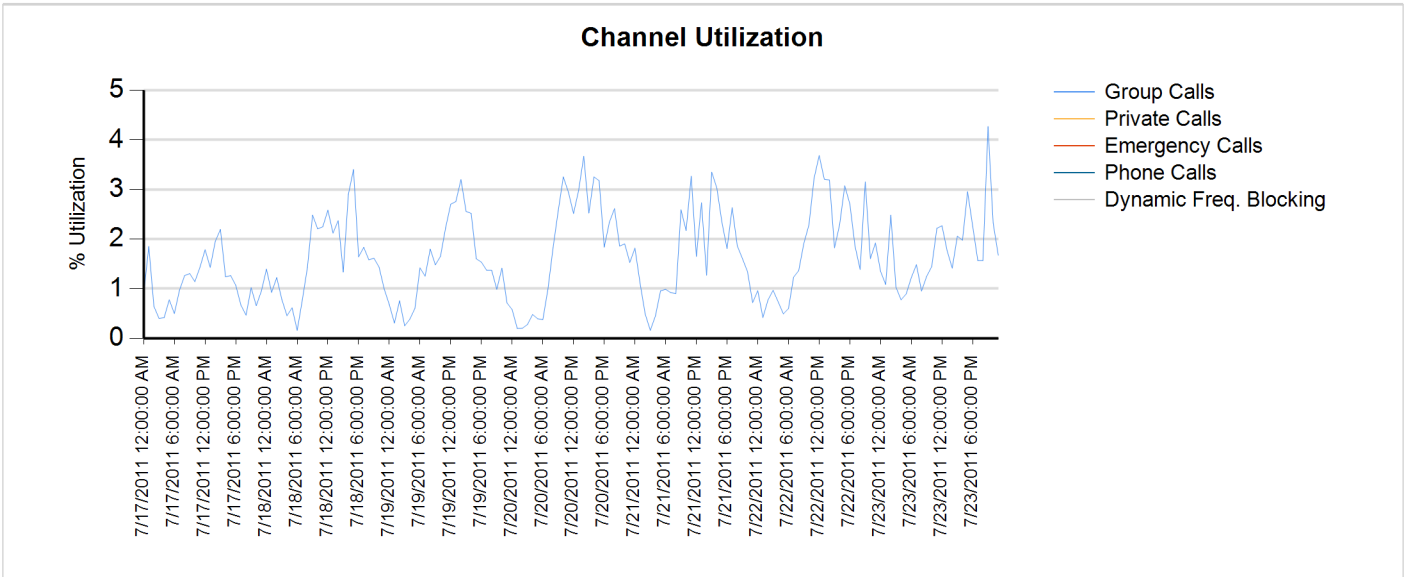
Sunday, July 10, 2011 12:00:00 AM - Saturday, July 16, 2011 11:59:59 PM



Site Report

Zone: CHARLOT - Site: Matthews Prime

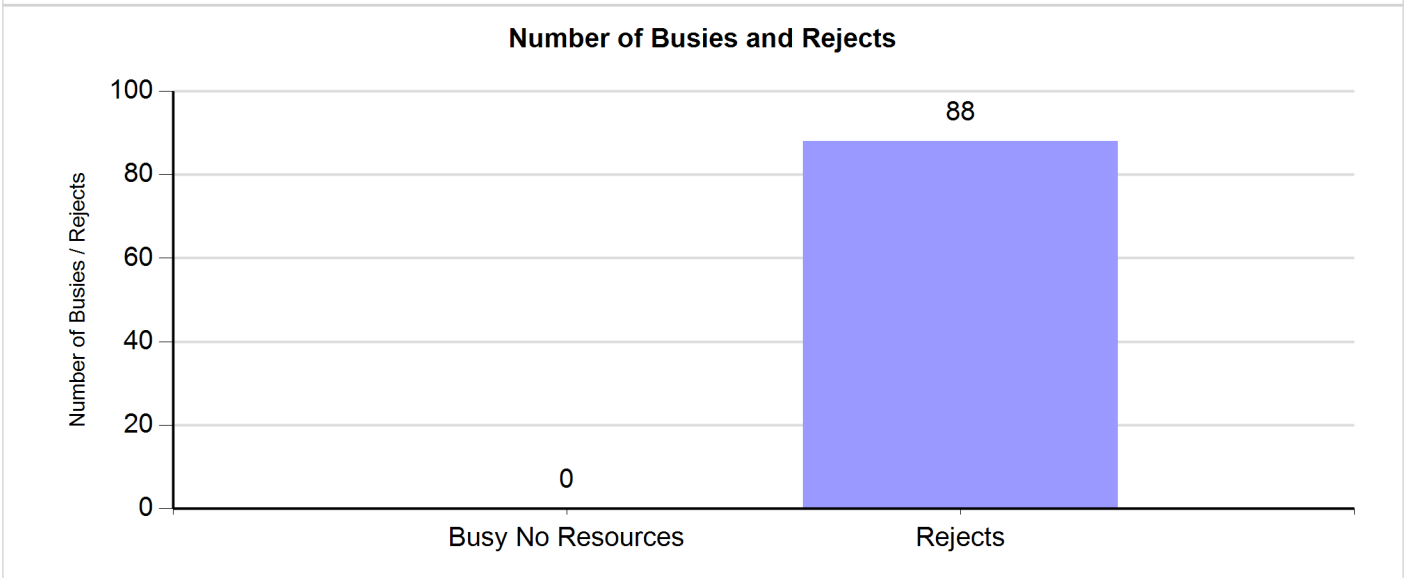
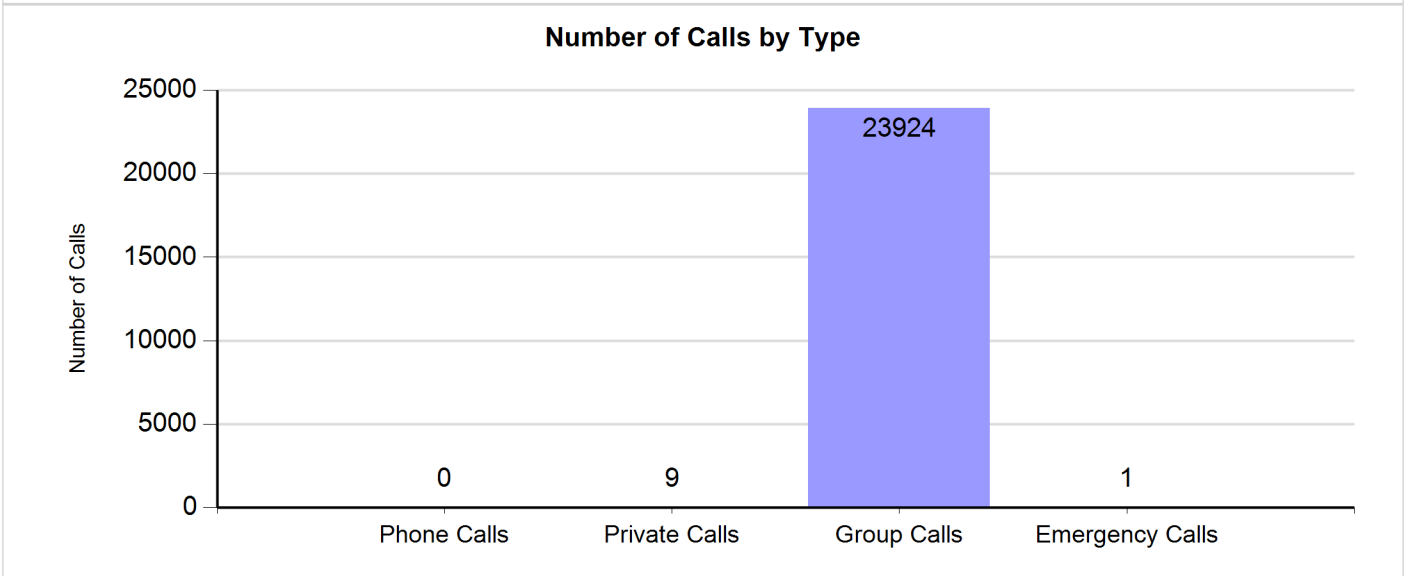
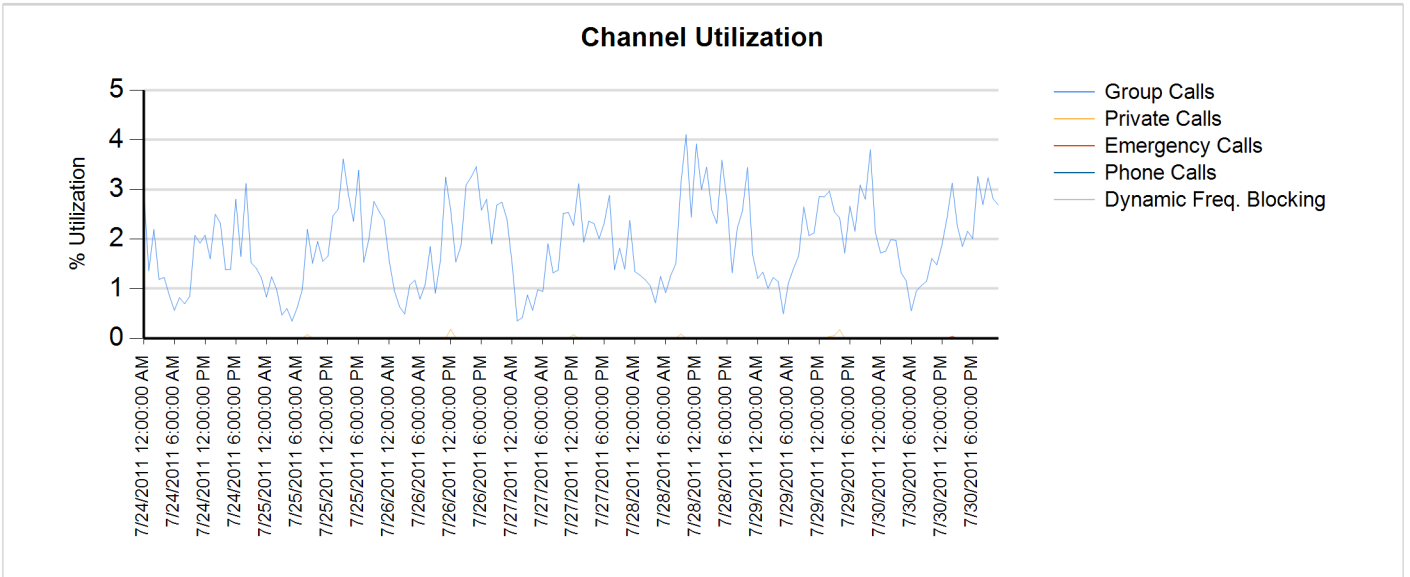
Sunday, July 17, 2011 12:00:00 AM - Saturday, July 23, 2011 11:59:59 PM



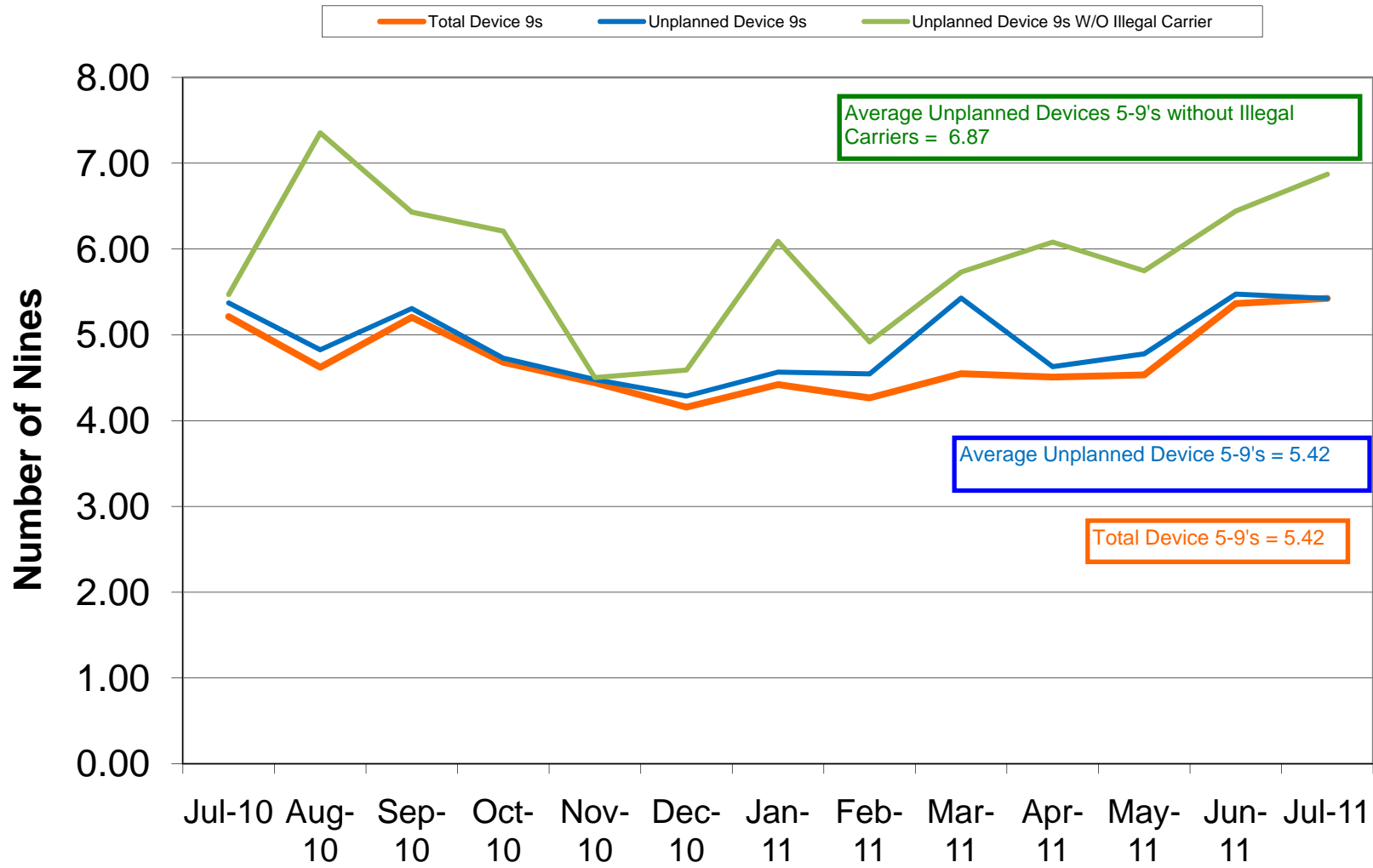
Site Report

Zone: CHARLOT - Site: Matthews Prime

Sunday, July 24, 2011 12:00:00 AM - Saturday, July 30, 2011 11:59:59 PM

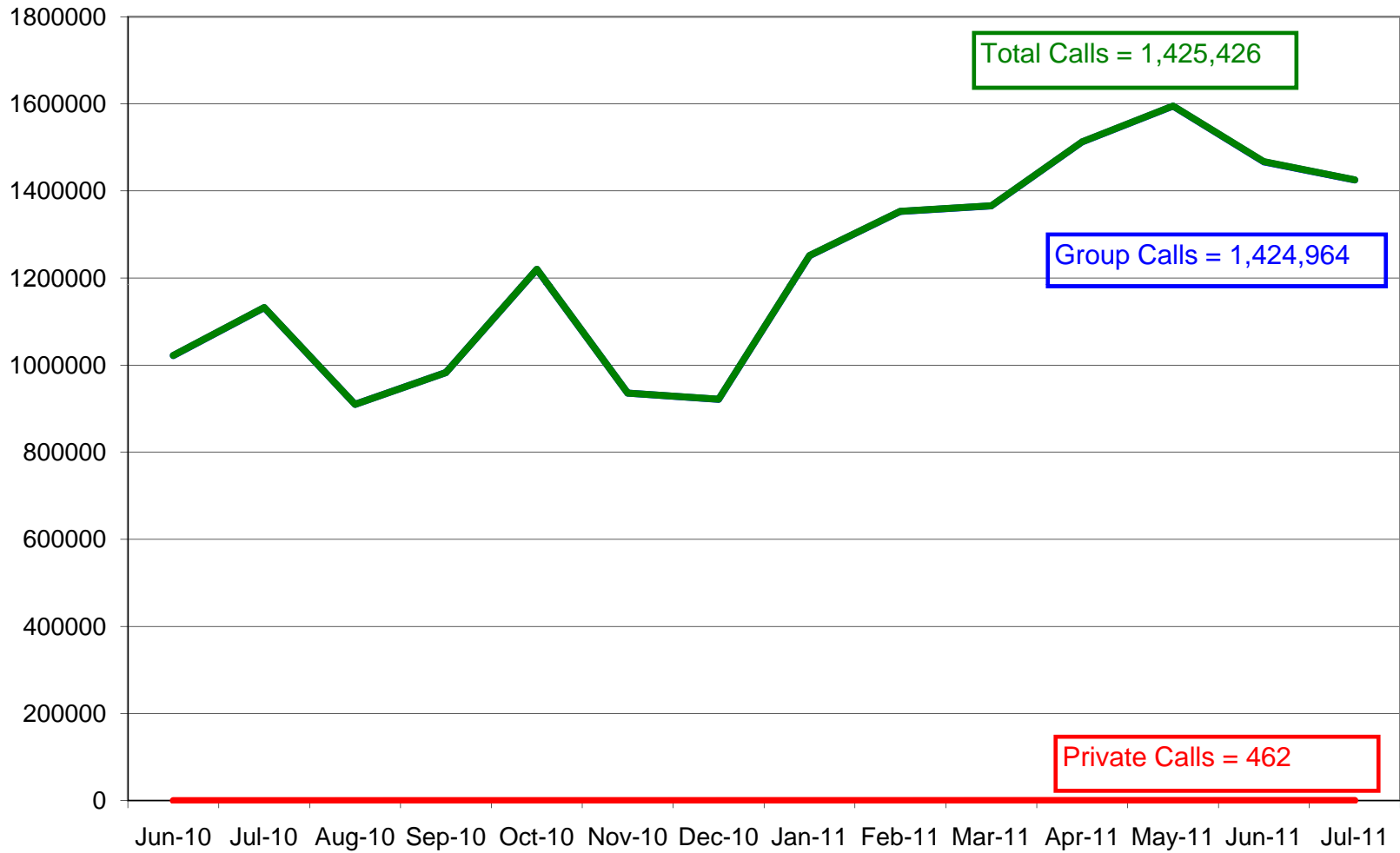


Charlotte/Mecklenburg (SIMULCAST) 5-9's Device Availability July 2011

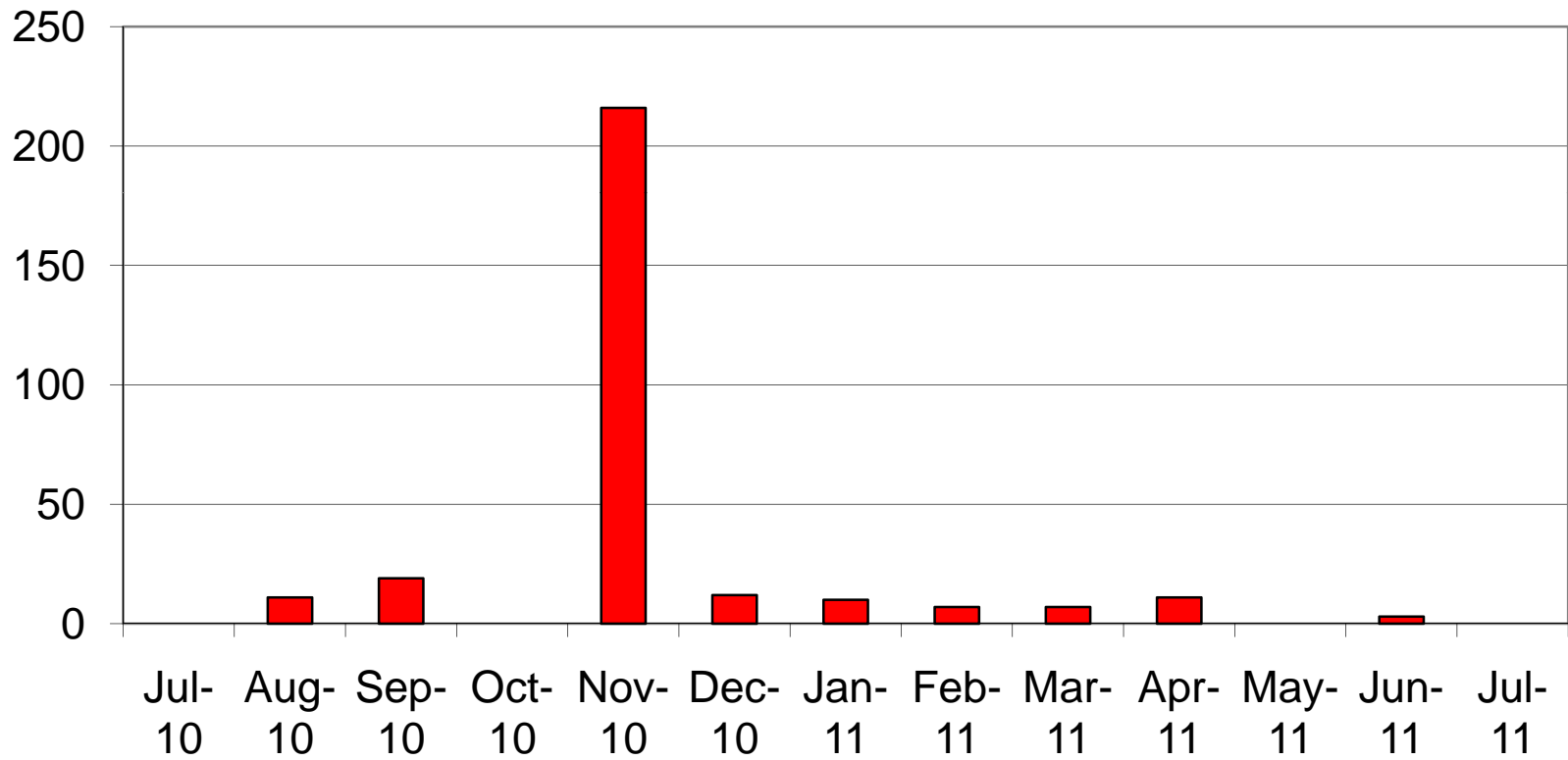


Charlotte/Mecklenburg (SIMULCAST) Site Calls July 2011

Group Private Total



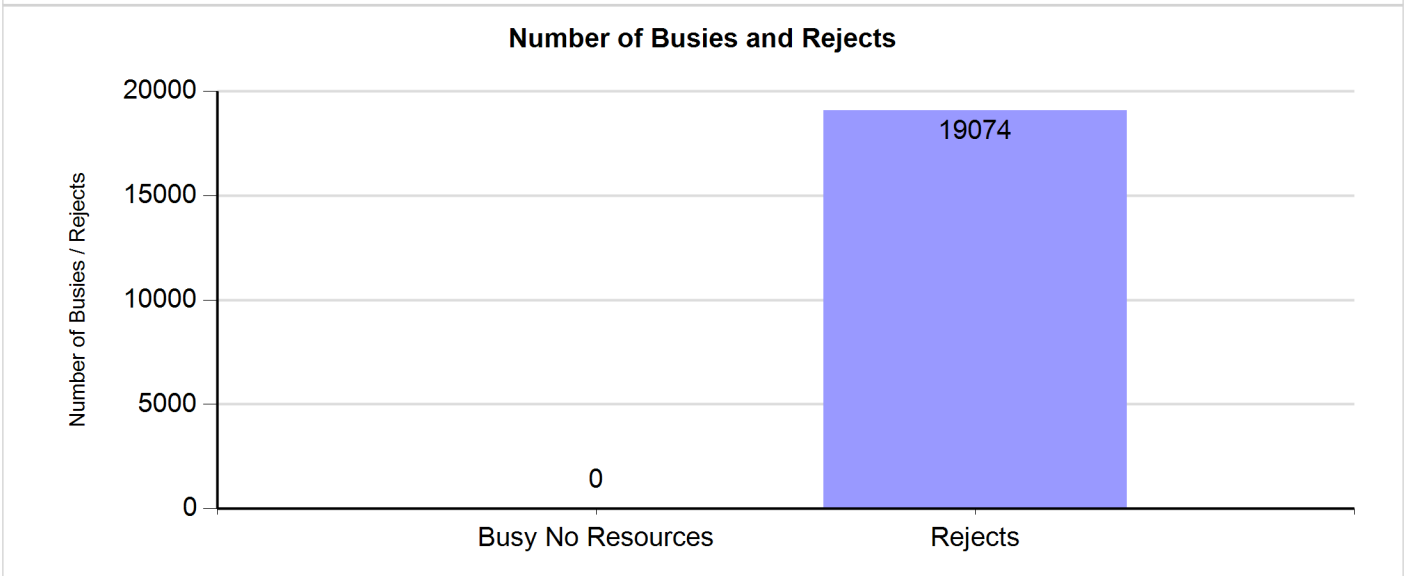
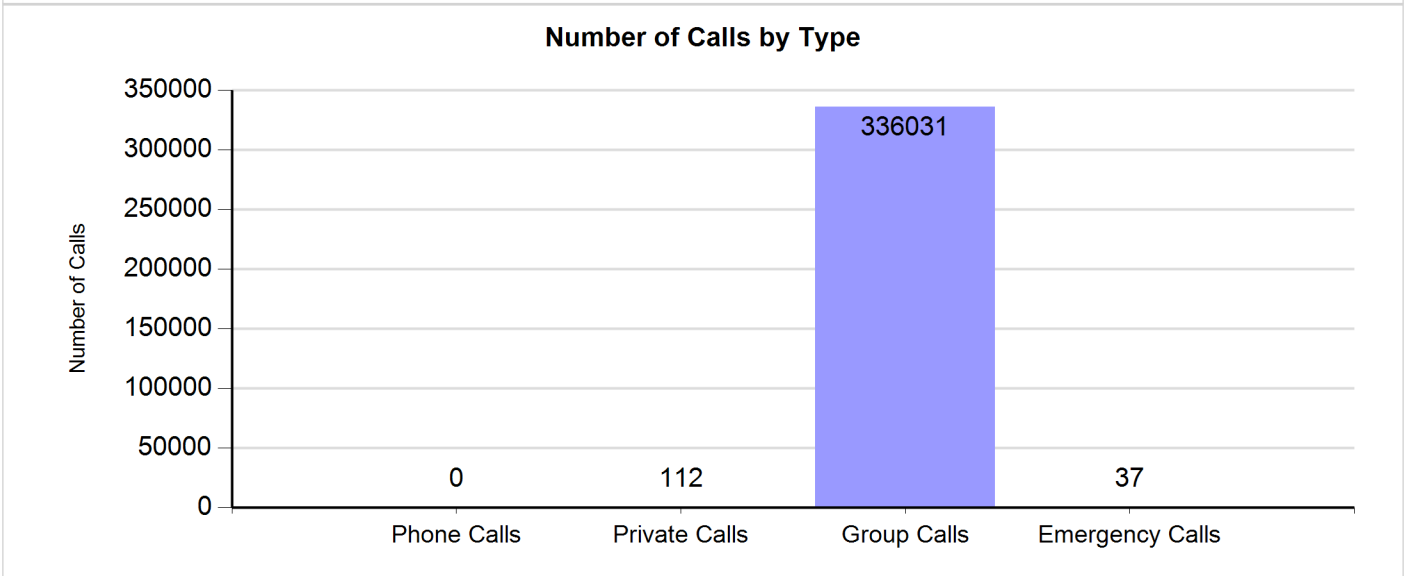
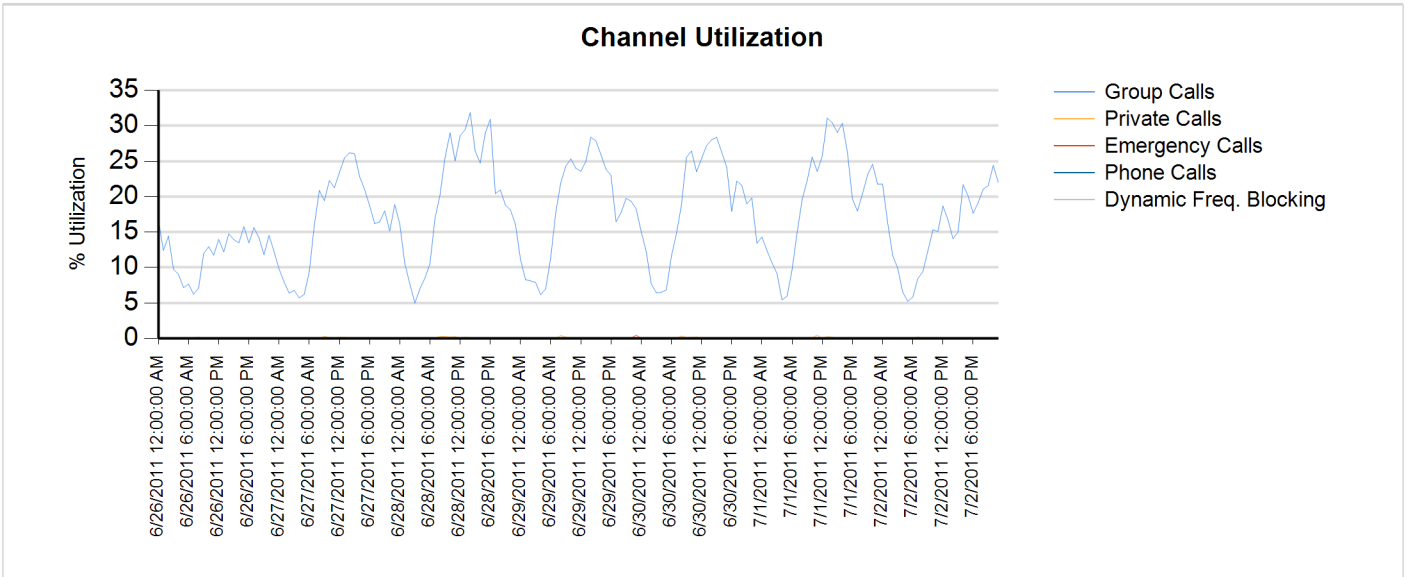
Charlotte/ Mecklenburg (SIMULCAST) No Zone Resources July 2011



Site Report

Zone: CHARLOT - Site: SIMULCAST

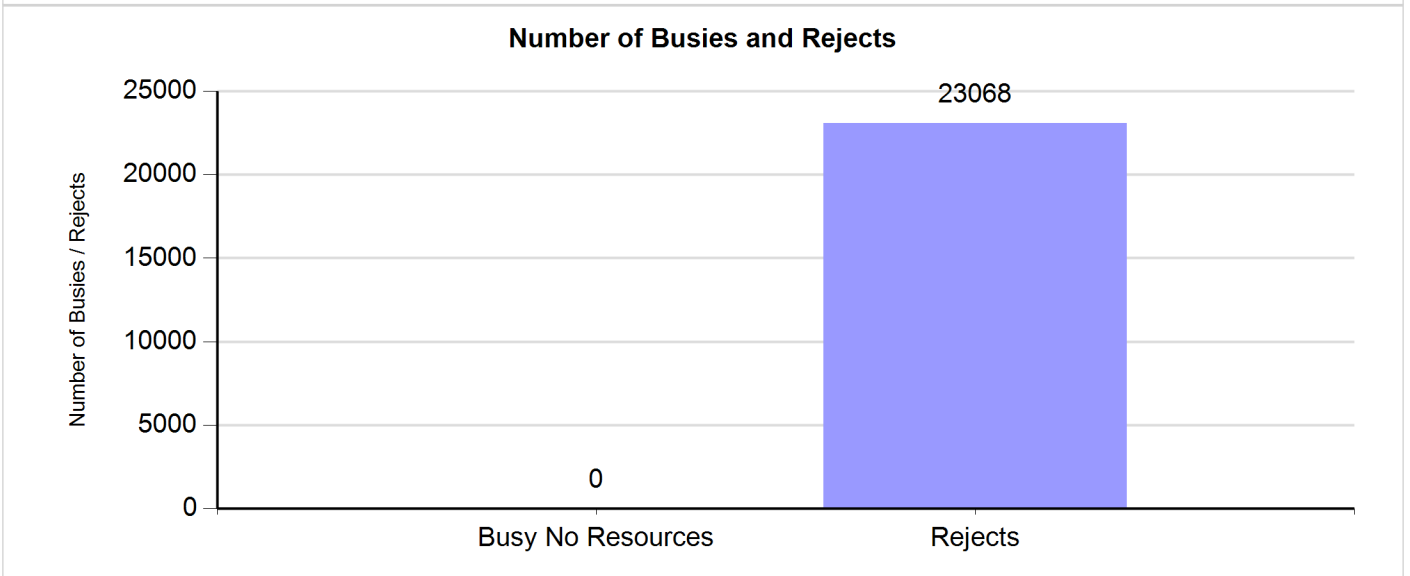
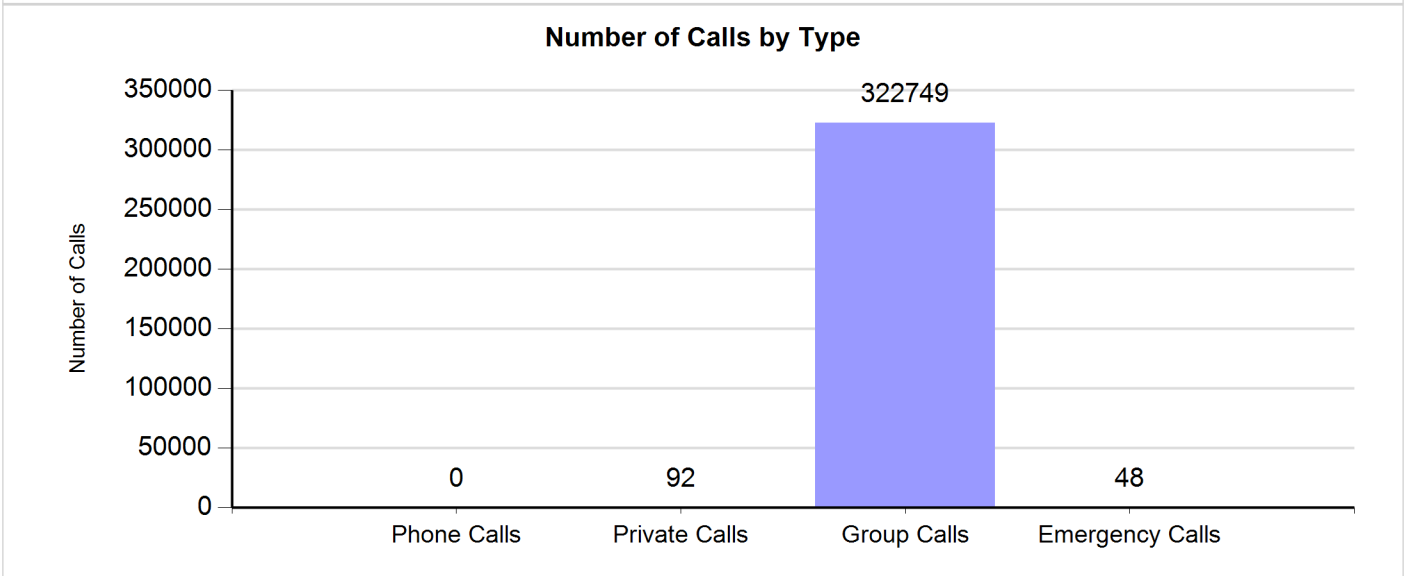
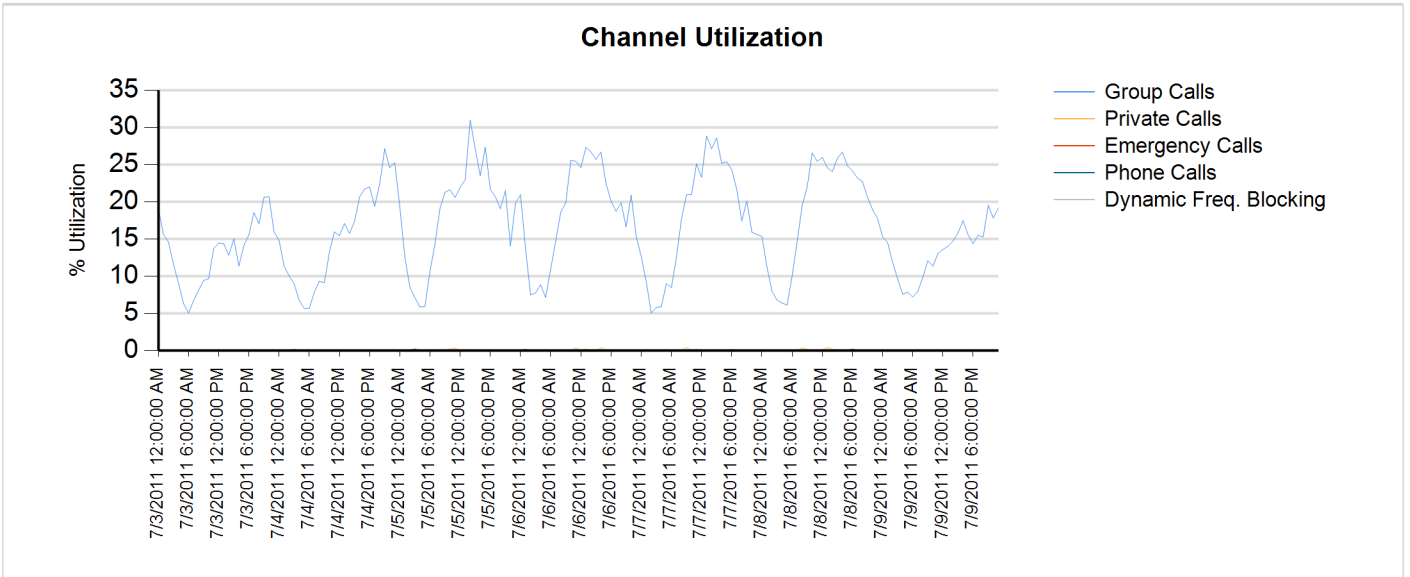
Sunday, June 26, 2011 12:00:00 AM - Saturday, July 02, 2011 11:59:59 PM



Site Report

Zone: CHARLOT - Site: SIMULCAST

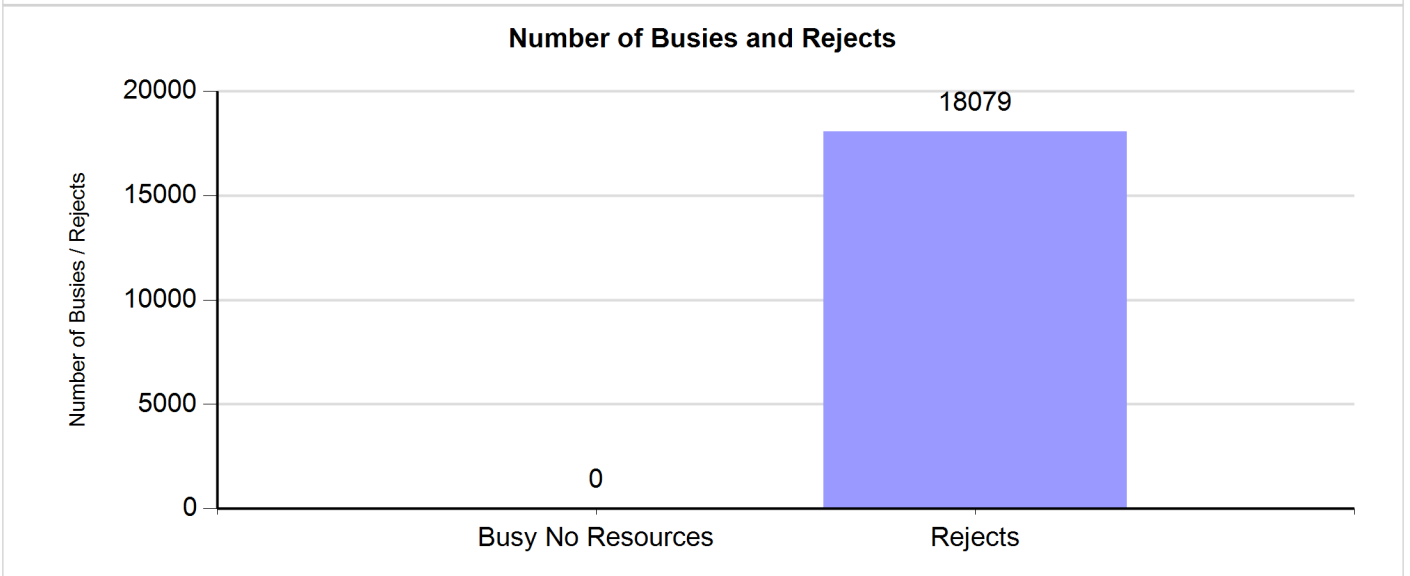
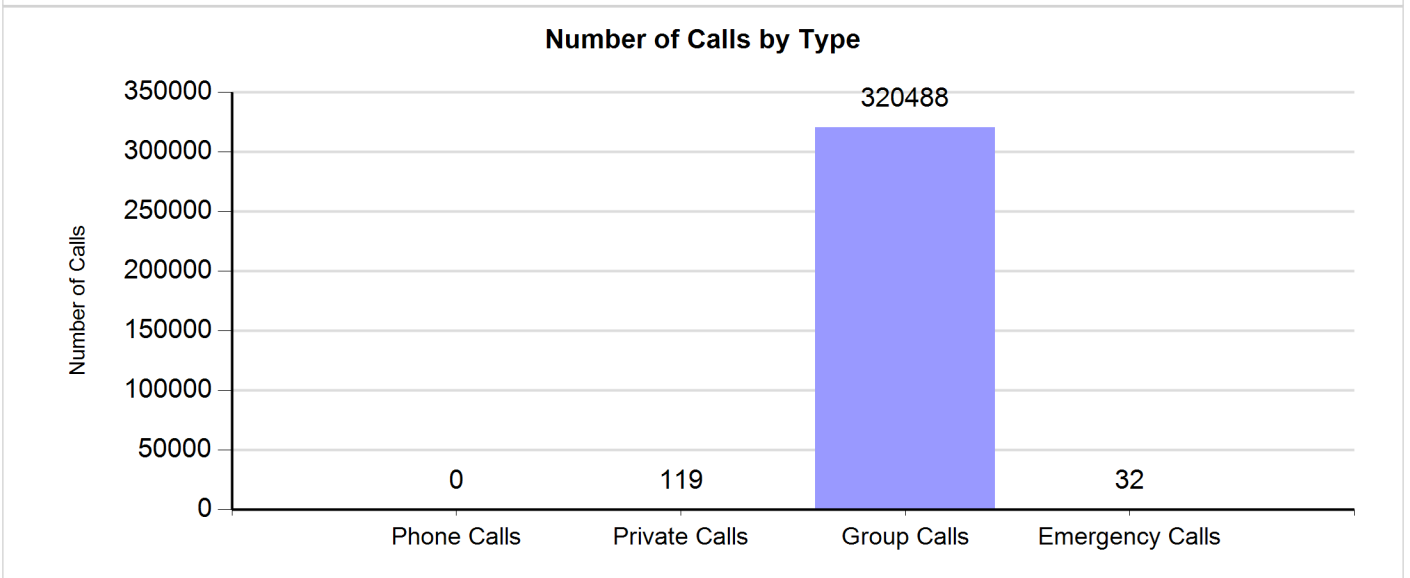
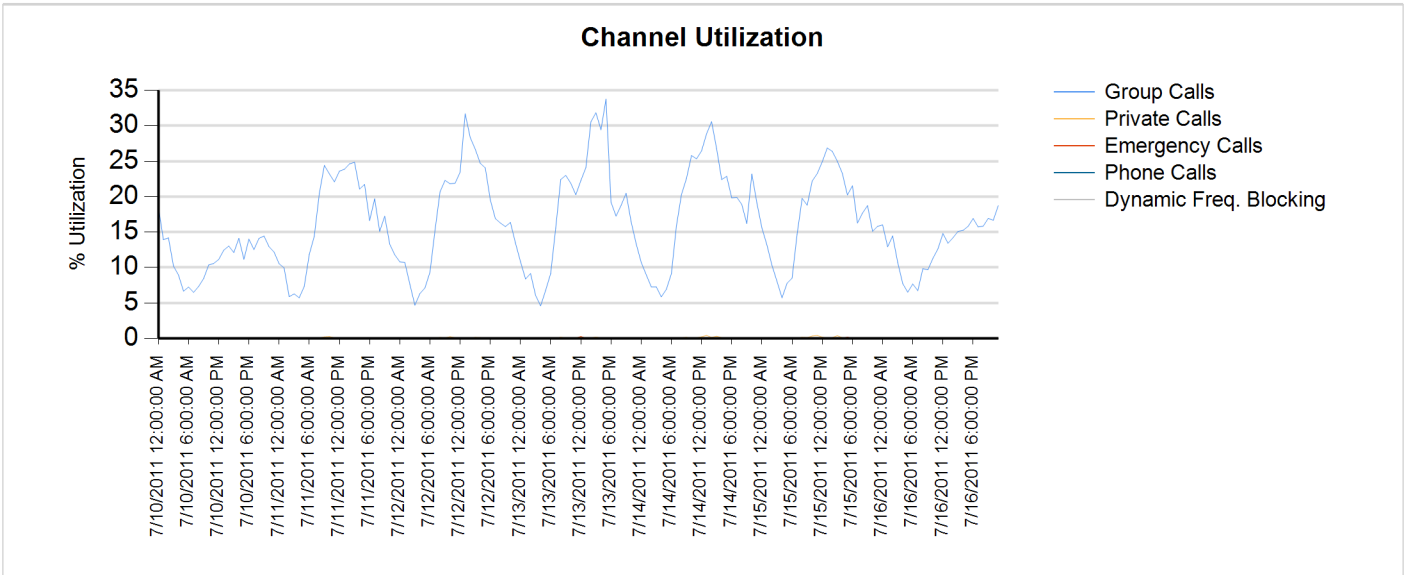
Sunday, July 03, 2011 12:00:00 AM - Saturday, July 09, 2011 11:59:59 PM



Site Report

Zone: CHARLOT - Site: SIMULCAST

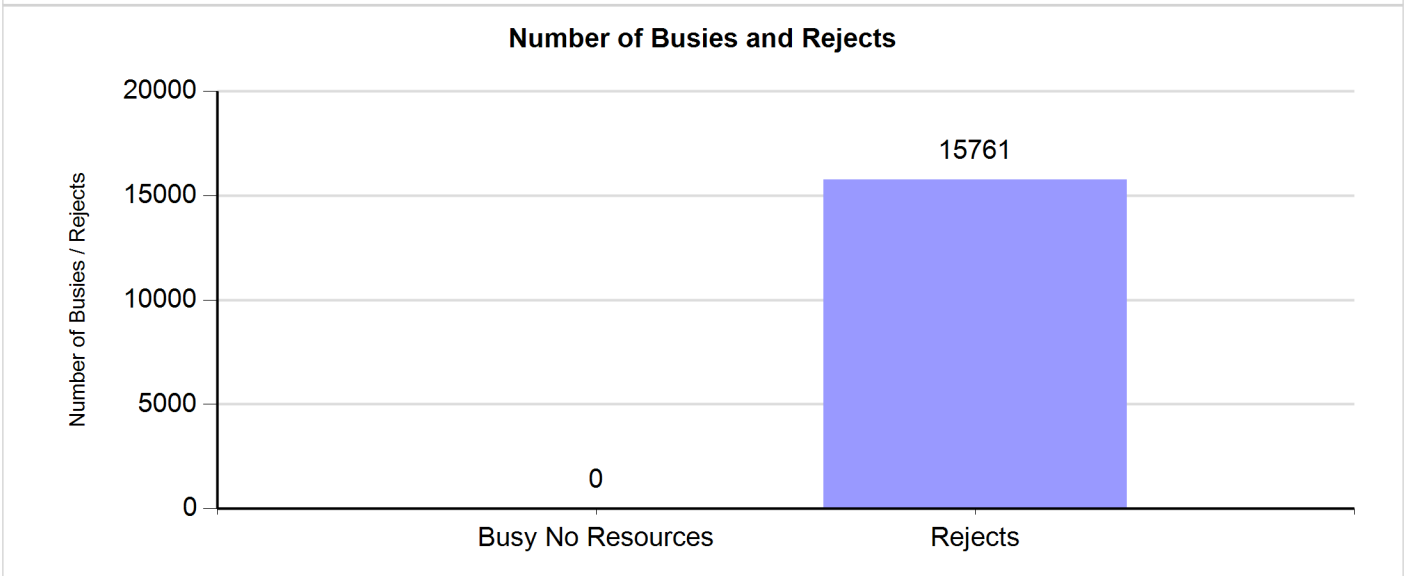
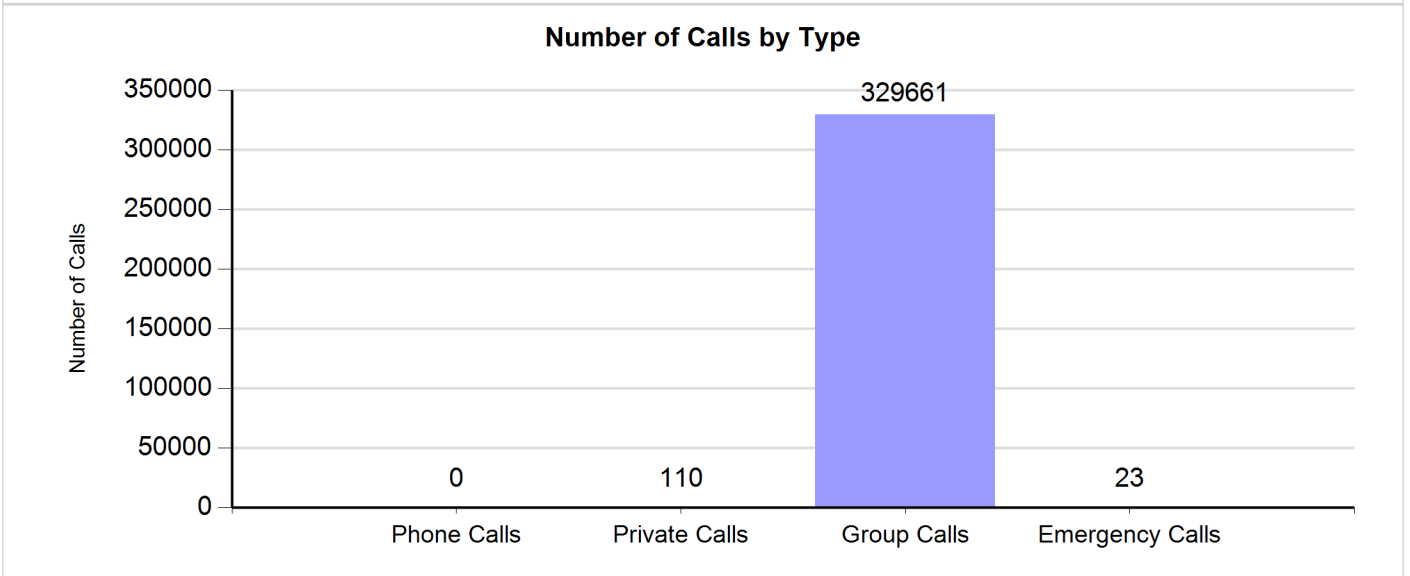
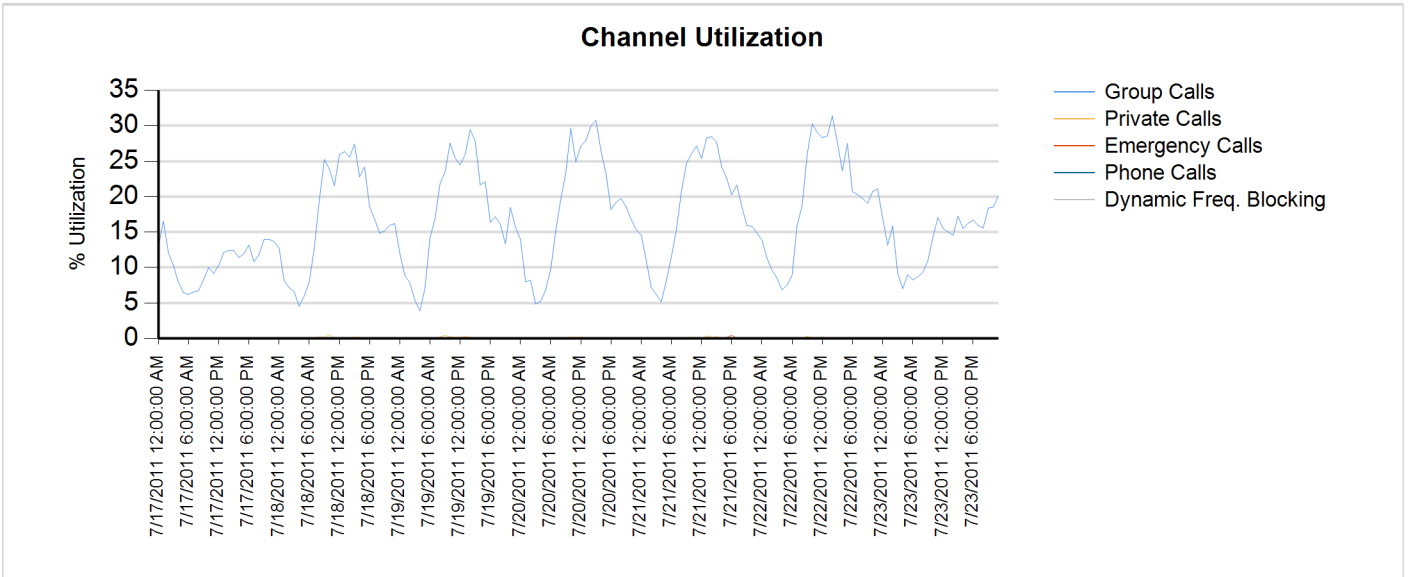
Sunday, July 10, 2011 12:00:00 AM - Saturday, July 16, 2011 11:59:59 PM



Site Report

Zone: CHARLOT - Site: SIMULCAST

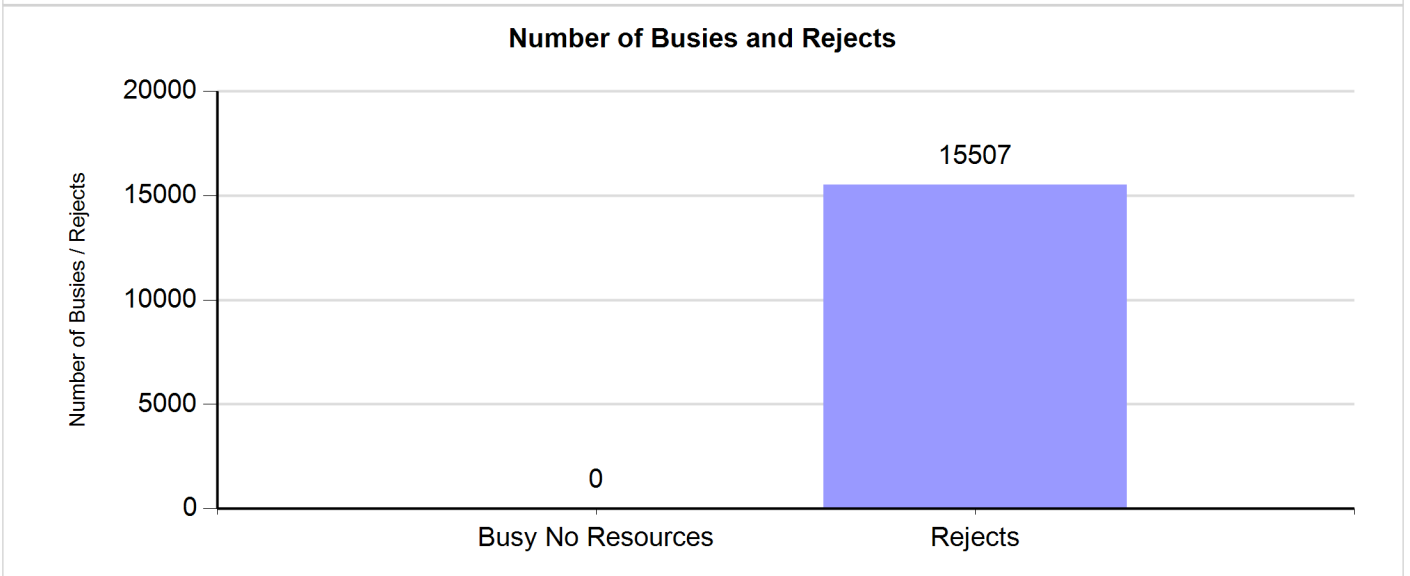
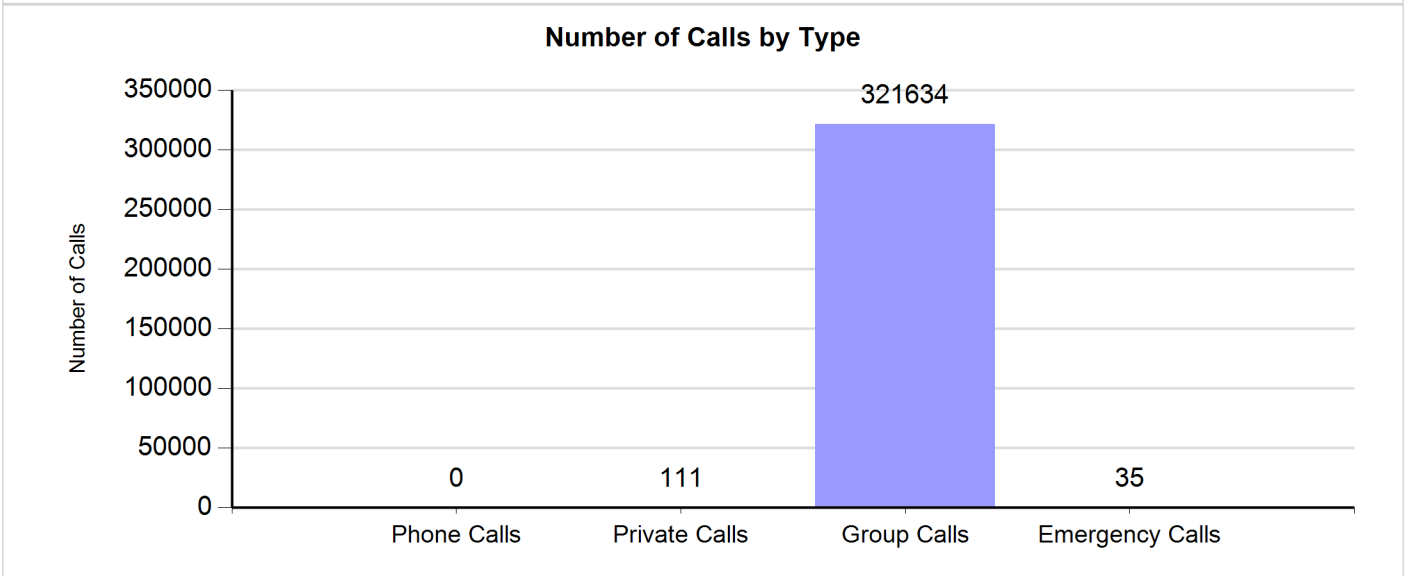
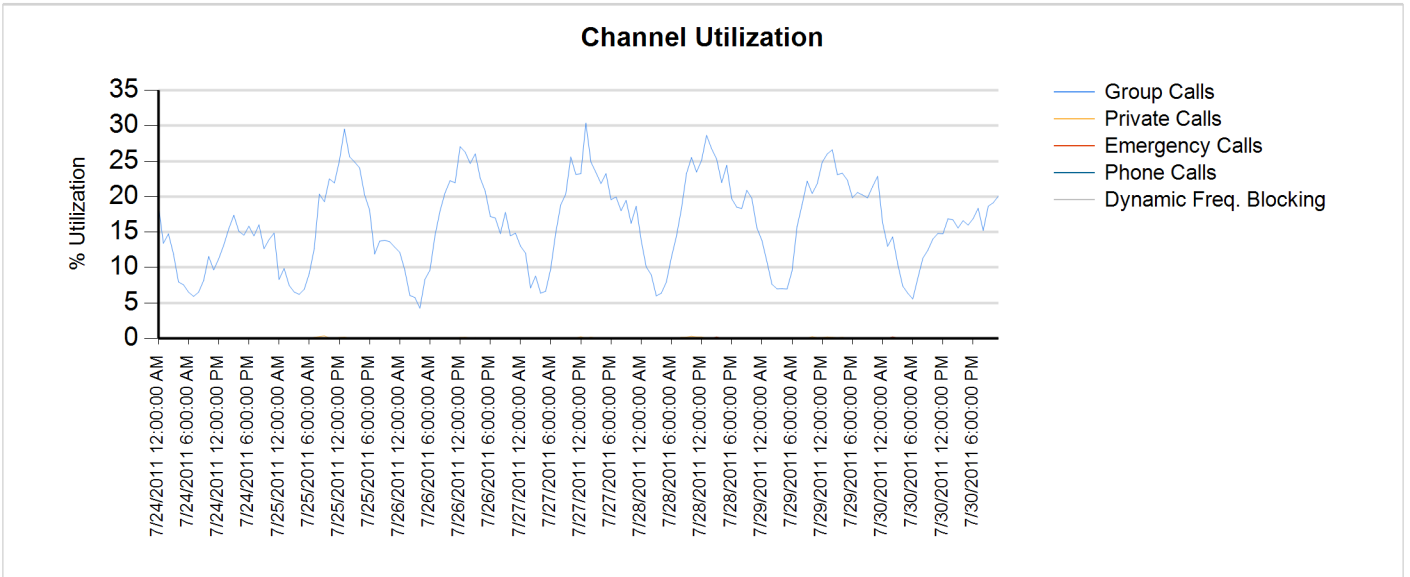
Sunday, July 17, 2011 12:00:00 AM - Saturday, July 23, 2011 11:59:59 PM



Site Report

Zone: CHARLOT - Site: SIMULCAST

Sunday, July 24, 2011 12:00:00 AM - Saturday, July 30, 2011 11:59:59 PM



Charlotte/Mecklenburg Monthly Case Report July 2011

Case ID	Status	Type	Site Name	Severity	Title	Create Date
22739930	Closed	Technical Dispatch	CHARLOTTE, CITY OF	Severity 3	MATTHEWS P25 PRIME SITE	6/30/2011 8:22
22740933	Closed	Technical Dispatch	CHARLOTTE, CITY OF	Severity 3	MATTHEWS P25 SUB SITE-CHARLOTTE, CITY OF-CHARLOTTE, CITY OF	6/30/2011 15:22
22741474	Closed	Technical Dispatch	CHARLOTTE MECKLENBURG POLICE DEPT	Severity 1	POLICE DISPATCH CENTER - CHARLOTTE, CITY OF	6/30/2011 21:14
22743136	Closed	Technical Support	James R Palmquist	Severity 2	CHARLOTTE MIDLAND P25 SUB SITE-CHARLOTTE, CITY OF-CHARLOTTE, CITY OF	7/2/2011 5:00
22743140	Closed	Technical Dispatch	James R Palmquist	Severity 1	SIMULCAST- MIDLAND - CHARLOTTE, CITY OF	7/2/2011 5:32
22743209	Closed	Network Management	Bobby J Mills Jr	Severity 1	MIDLAND P25 SUB SITE-CHARLOTTE, CITY OF-CHARLOTTE, CITY OF	7/2/2011 13:13
22743376	Closed	Technical Dispatch	MATTHEWS, TOWN OF	Severity 2	MPD/ MATTHEWS DISPATCH CENTER - CHARLOTTE, CITY OF	7/3/2011 12:41
22743389	Closed	Network Management	Amy Mui	Severity 1	SIMULCAST-CGMC - CHARLOTTE, CITY OF	7/3/2011 15:08
22743754	Closed	Network Management	Curtis Banks	Severity 1	SUGAR CREEK P25 SUB SITE-CHARLOTTE, CITY OF-CHARLOTTE, CITY OF	7/4/2011 21:46
22745768	Closed	Technical Support	GASTONIA, CITY OF	Severity 3	GASTON EOC - CHARLOTTE, CITY OF	7/6/2011 12:06
22749138	Closed	Technical Dispatch	CHARLOTTE MECKLENBURG POLICE DEPT	Severity 1	POLICE DISPATCH CENTER - CHARLOTTE, CITY OF	7/8/2011 18:03
22749212	Closed	Technical Dispatch	Motorola SOC SOC 1301	Severity 2	CHARLOTTE P25 MASTER SITE-CHARLOTTE, CITY OF-CHARLOTTE, CITY OF	7/8/2011 22:35
22749371	Closed	Technical Dispatch	CHARLOTTE MECKLENBURG POLICE DEPT	Severity 1	POLICE DISPATCH CENTER - CHARLOTTE, CITY OF	7/10/2011 4:31
22750451	Closed	Technical Dispatch	Bobby J Mills Jr	Severity 1	SIMULCAST-SUGAR CREEK - CHARLOTTE, CITY OF	7/11/2011 14:29
22751159	Closed	Network Management	Inderjeet S Sidhu	Severity 1	SIMULCAST-CGMC - CHARLOTTE, CITY OF	7/12/2011 2:51
22753897	Closed	Technical Dispatch	CHARLOTTE, CITY OF	Severity 1	CFD/CHARLOTTE FIRE - CHARLOTTE, CITY OF	7/13/2011 19:28
22753954	Closed	Technical Dispatch	Daniel J Mosier	Severity 2	SIMULCAST-NORTH TOWER - CHARLOTTE, CITY OF	7/13/2011 22:34
22754079	Closed	Technical Dispatch	CHARLOTTE, CITY OF	Severity 3	SIMULCAST-NORTH TOWER - CHARLOTTE, CITY OF	7/14/2011 7:30
22754565	Closed	Technical Dispatch	CHARLOTTE, CITY OF	Severity 2	SIMULCAST-NORTH TOWER - CHARLOTTE, CITY OF	7/14/2011 10:41
22754959	Closed	Technical Dispatch	CITY OF CHARLOTTE RADIO SHOP	Severity 3	SIMULCAST-NORTH TOWER - CHARLOTTE, CITY OF	7/14/2011 13:41
22756376	Closed	Technical Dispatch	Motorola SOC SOC 1301	Severity 2	CHARLOTTE P25 MASTER SITE-CHARLOTTE, CITY OF-CHARLOTTE, CITY OF	7/15/2011 14:46
22756807	Closed	Technical Dispatch	CHARLOTTE, CITY OF	Severity 1	CFD/CHARLOTTE FIRE - CHARLOTTE, CITY OF	7/16/2011 11:51
22756876	Closed	Network Management	Curtis Banks	Severity 1	SIMULCAST-SUGAR CREEK CO LOC - CHARLOTTE, CITY OF	7/16/2011 23:42
22757188	Closed	Request for RA	CHARLOTTE, CITY OF	Severity 2	SIMULCAST-NORTH TOWER - CHARLOTTE, CITY OF	7/18/2011 9:31
22758518	Closed	Technical Dispatch	CHARLOTTE, CITY OF	Severity 3	CFD/CHARLOTTE FIRE - CHARLOTTE, CITY OF	7/18/2011 22:08
22762192	Closed	Technical Support	CHARLOTTE, CITY OF	Severity 2	CHARLOTTE P25 MASTER SITE-CHARLOTTE, CITY OF-CHARLOTTE, CITY OF	7/21/2011 10:47
22762740	Closed	Technical Dispatch	CHARLOTTE, CITY OF	Severity 2	MATTHEWS P25 PRIME SITE	7/21/2011 15:14
22764169	Closed	Technical Dispatch	MOUNT HOLLY, CITY OF	Severity 2	MT HOLLY PD - CHARLOTTE, CITY OF	7/22/2011 14:37
22764572	Closed	Network Management	Kristopher R Termine	Severity 1	CORNELIUS/NORTH MECK-CHARLOTTE	7/22/2011 23:46
22764766	Closed	Technical Dispatch	Curtis Banks	Severity 1	SIMULCAST-CGMC - CHARLOTTE, CITY OF	7/24/2011 1:49
22764780	Closed	Technical Dispatch	Curtis Banks	Severity 1	SUGAR CREEK P25 SUB SITE-CHARLOTTE, CITY OF-CHARLOTTE, CITY OF	7/24/2011 6:43
22764785	Closed	Technical Dispatch	CHARLOTTE, CITY OF	Severity 3	CFD/CHARLOTTE FIRE - CHARLOTTE, CITY OF	7/24/2011 8:09
22764890	Closed	Network Management	Curtis Banks	Severity 1	SIMULCAST-CGMC - CHARLOTTE, CITY OF	7/24/2011 19:59
22764907	Closed	Network Management	Curtis Banks	Severity 1	SUGAR CREEK P25 SUB SITE-CHARLOTTE, CITY OF-CHARLOTTE, CITY OF	7/24/2011 21:44
22765249	Closed	Technical Dispatch	CHARLOTTE, CITY OF	Severity 2	SIMULCAST- MIDLAND - CHARLOTTE, CITY OF	7/25/2011 9:34
22766809	Closed	Technical Dispatch	CHARLOTTE, CITY OF	Severity 1	SIMULCAST-SUGAR CREEK CO LOC - CHARLOTTE, CITY OF	7/26/2011 9:26
22770014	Closed	Technical Dispatch	CHARLOTTE, CITY OF	Severity 3	MATTHEWS P25 PRIME SITE	7/28/2011 7:58
22770109	Closed	Technical Support	CHARLOTTE, CITY OF	Severity 3	MATTHEWS P25 PRIME SITE	7/28/2011 8:58
22772920	Closed	Technical Dispatch	Michael P Blake	Severity 1	SIMULCAST-SUGAR CREEK CO LOC - CHARLOTTE, CITY OF	7/29/2011 23:56
22773024	Closed	Network Management	Andrey Maksimov	Severity 1	SIMULCAST- MIDLAND - CHARLOTTE, CITY OF	7/30/2011 15:28
22773168	Closed	Technical Dispatch	MATTHEWS, TOWN OF	Severity 2	MPD/ MATTHEWS DISPATCH CENTER - CHARLOTTE, CITY OF	7/31/2011 13:15
22773213	Closed	Network Management	Curtis Banks	Severity 1	SIMULCAST-CGMC - CHARLOTTE, CITY OF	7/31/2011 20:11
				Severity 1	21	
				Severity 2	12	
				Severity 3	9	
				Total	42	

2011

JANUARY						
S	M	T	W	T	F	S
						1
2	3	4	5	6	7	8
9	10	11	12	13	14	15
16	17	18	19	20	21	22
23	24	25	26	27	28	29
30	31					

FEBRUARY						
S	M	T	W	T	F	S
		1	2	3	4	5
6	7	8	9	10	11	12
13	14	15	16	17	18	19
20	21	22	23	24	25	26
27	28					

MARCH						
S	M	T	W	T	F	S
		1	2	3	4	5
6	7	8	9	10	11	12
13	14	15	16	17	18	19
20	21	22	23	24	25	26
27	28	29	30	31		

APRIL						
S	M	T	W	T	F	S
					1	2
3	4	5	6	7	8	9
10	11	12	13	14	15	16
17	18	19	20	21	22	23
24	25	26	27	28	29	30

MAY						
S	M	T	W	T	F	S
1	2	3	4	5	6	7
8	9	10	11	12	13	14
15	16	17	18	19	20	21
22	23	24	25	26	27	28
29	30	31				

JUNE						
S	M	T	W	T	F	S
			1	2	3	4
5	6	7	8	9	10	11
12	13	14	15	16	17	18
19	20	21	22	23	24	25
26	27	28	29	30		

JULY						
S	M	T	W	T	F	S
					1	2
3	4	5	6	7	8	9
10	11	12	13	14	15	16
17	18	19	20	21	22	23
24	25	26	27	28	29	30
31						

AUGUST						
S	M	T	W	T	F	S
	1	2	3	4	5	6
7	8	9	10	11	12	13
14	15	16	17	18	19	20
21	22	23	24	25	26	27
28	29	30	31			

SEPTEMBER						
S	M	T	W	T	F	S
				1	2	3
4	5	6	7	8	9	10
11	12	13	14	15	16	17
18	19	20	21	22	23	24
25	26	27	28	29	30	

OCTOBER						
S	M	T	W	T	F	S
						1
2	3	4	5	6	7	8
9	10	11	12	13	14	15
16	17	18	19	20	21	22
23	24	25	26	27	28	29
30	31					

NOVEMBER						
S	M	T	W	T	F	S
		1	2	3	4	5
6	7	8	9	10	11	12
13	14	15	16	17	18	19
20	21	22	23	24	25	26
27	28	29	30			

DECEMBER						
S	M	T	W	T	F	S
				1	2	3
4	5	6	7	8	9	10
11	12	13	14	15	16	17
18	19	20	21	22	23	24
25	26	27	28	29	30	31