

Moving Forward



***City Council Dinner Briefing
August 27, 2012***

The Road Traveled...



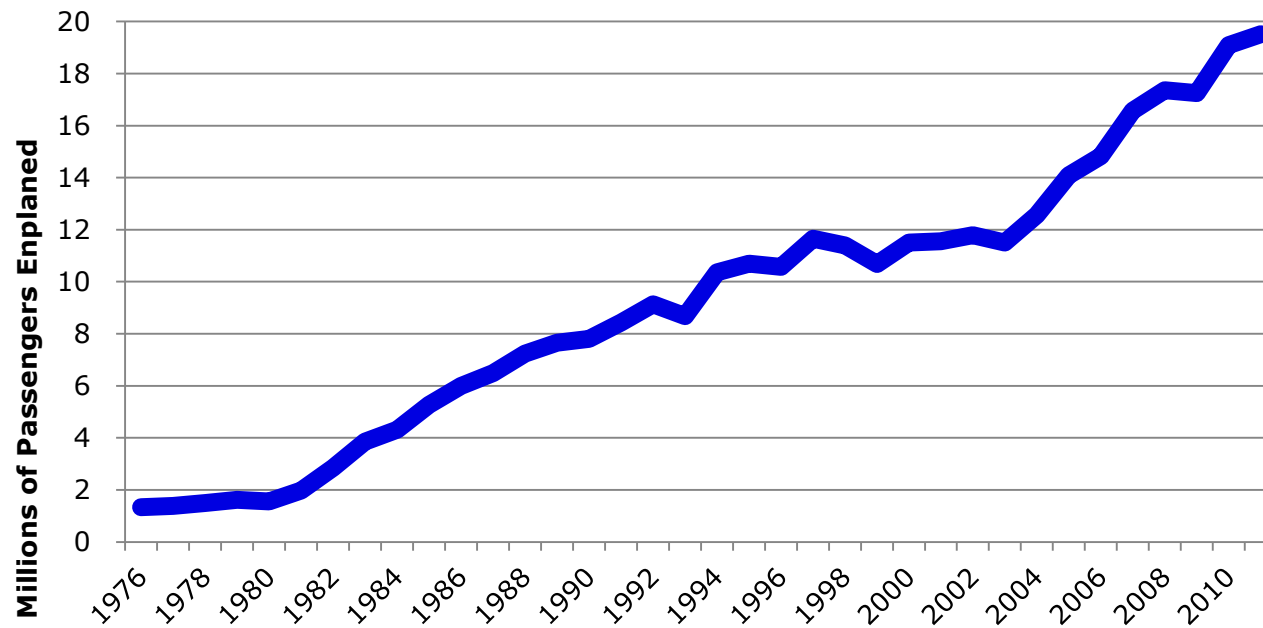
“One’s destination is never a place, but a new way of seeing things.”
- Henry Miller

The Path Forward...

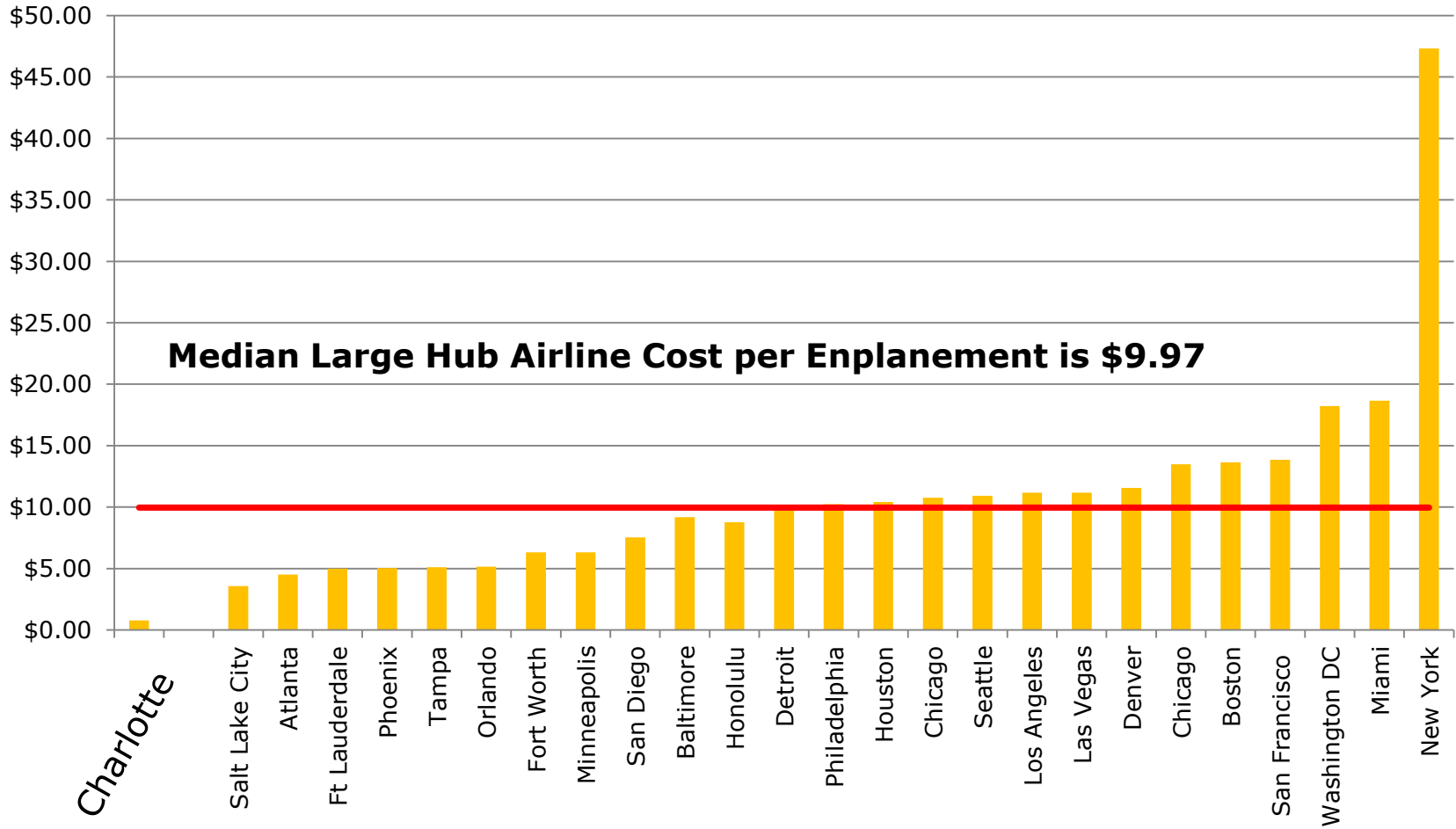


“If you come to a fork in the road, take it.”
- Yogi Berra

- \$12 billion of local economic impact
- Hub airline and non-hub airlines expanding
- One of two US large hub airports showing growth in seat capacity for August 2012



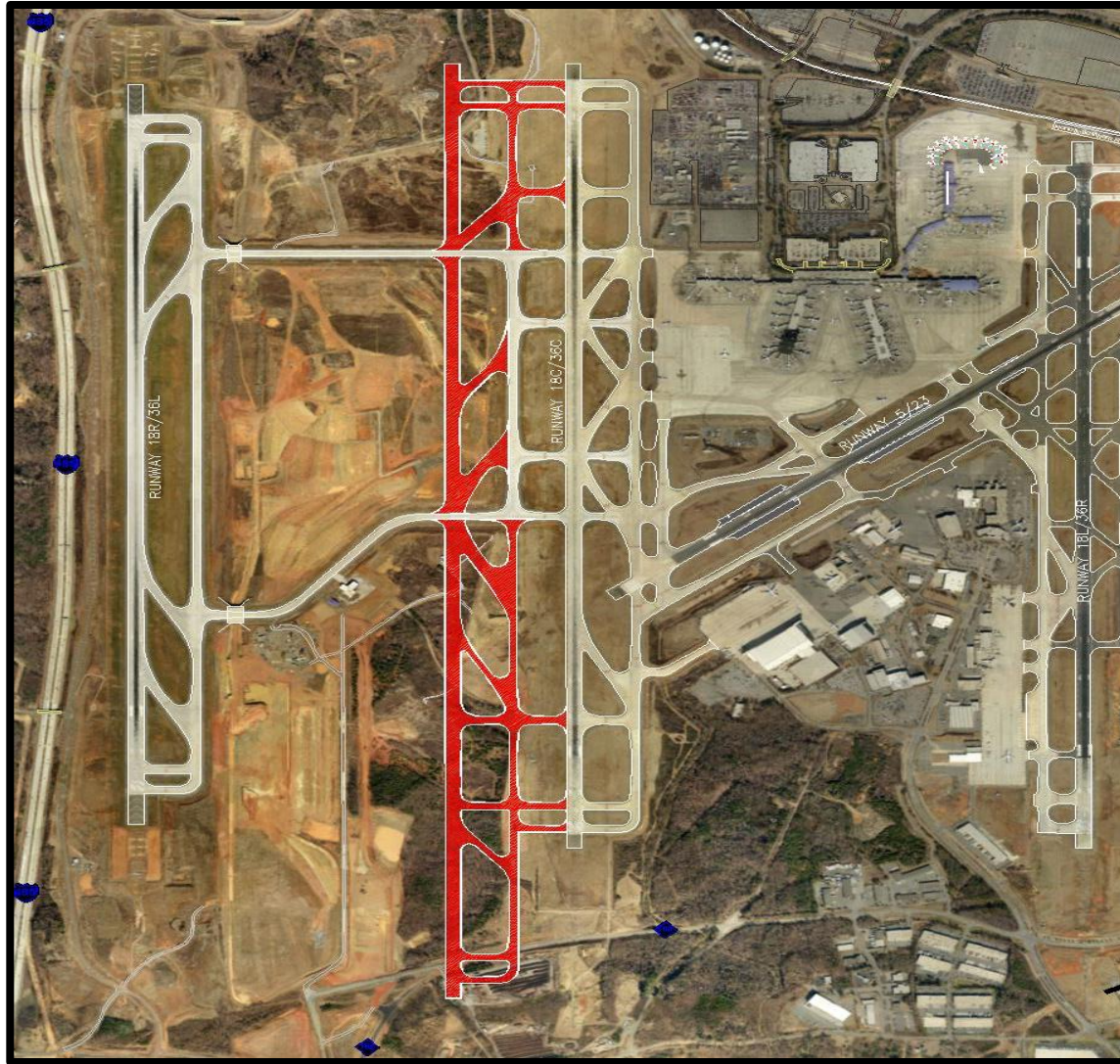
Large Hub Airline Cost per Enplanement - 2011



Source: **Peer review of U.S. Airports**, Fitch Ratings, July 30, 2012, with the exception of Salt Lake City, Phoenix, and Baltimore which were obtained through management reports online.

Notes: Cost Per Enplaned Passenger data is being reported from multiple sources and can be calculated in multiple ways for the same airport; therefore, Cost Per Enplanement may not be comparable.

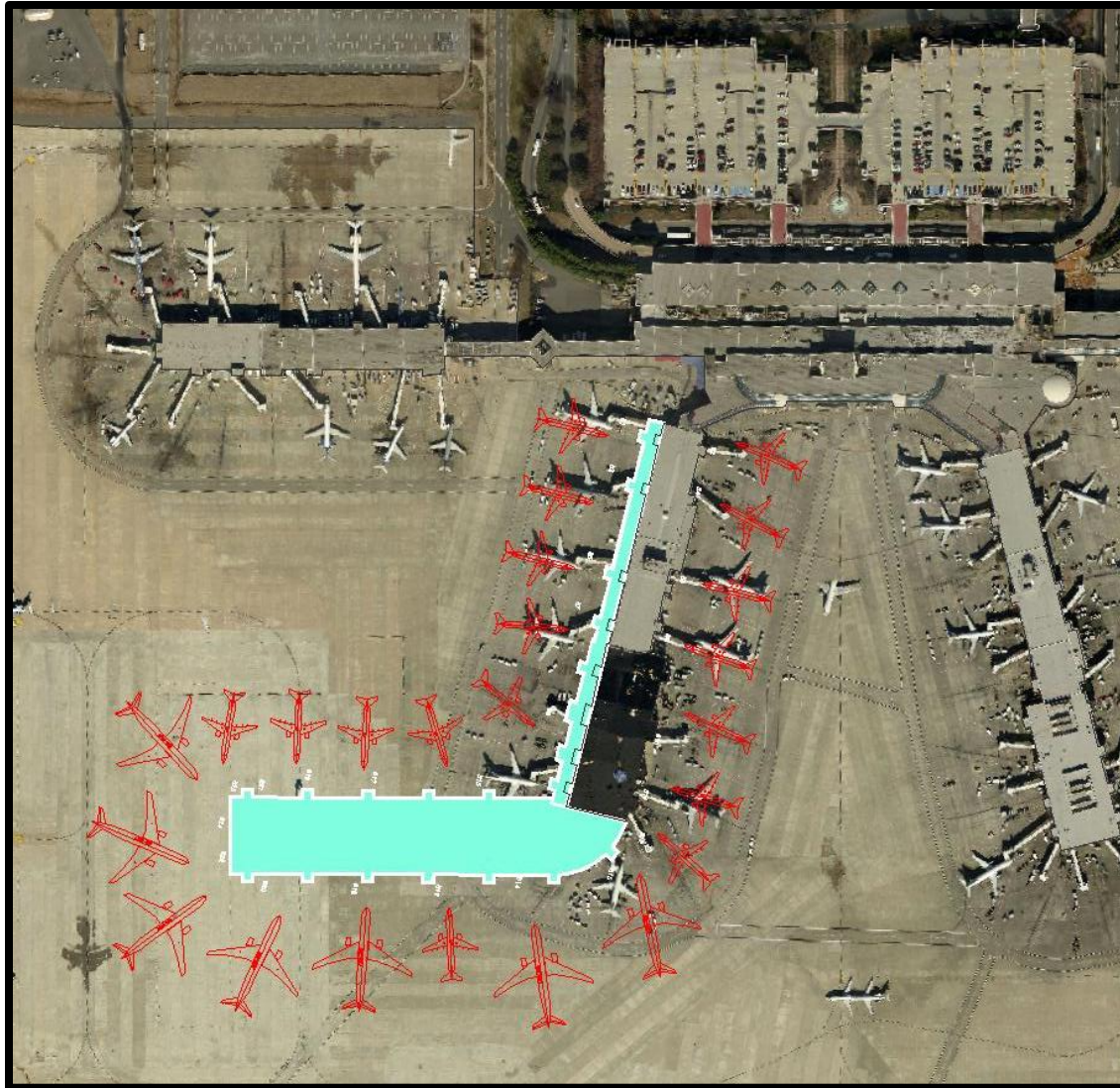
Fourth Parallel Runway



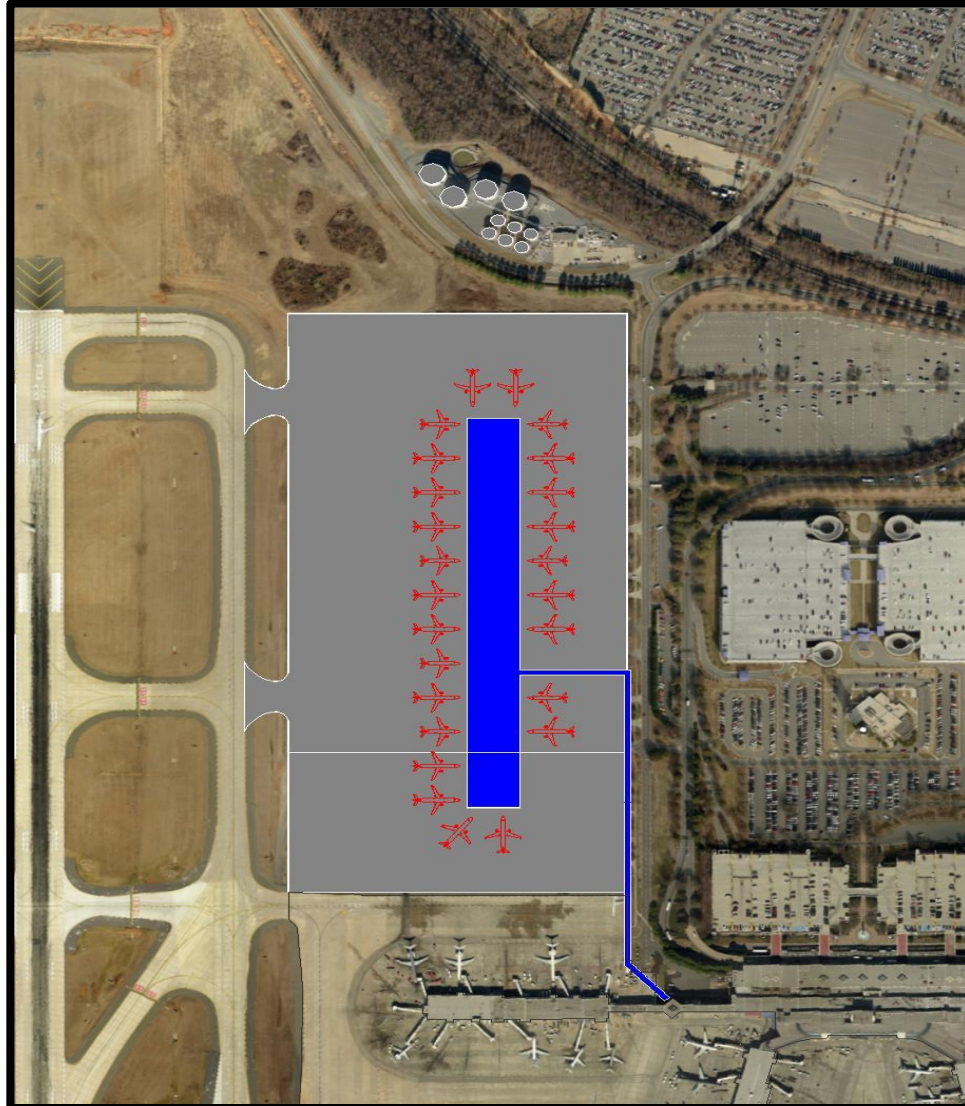
Concourse E Expansion



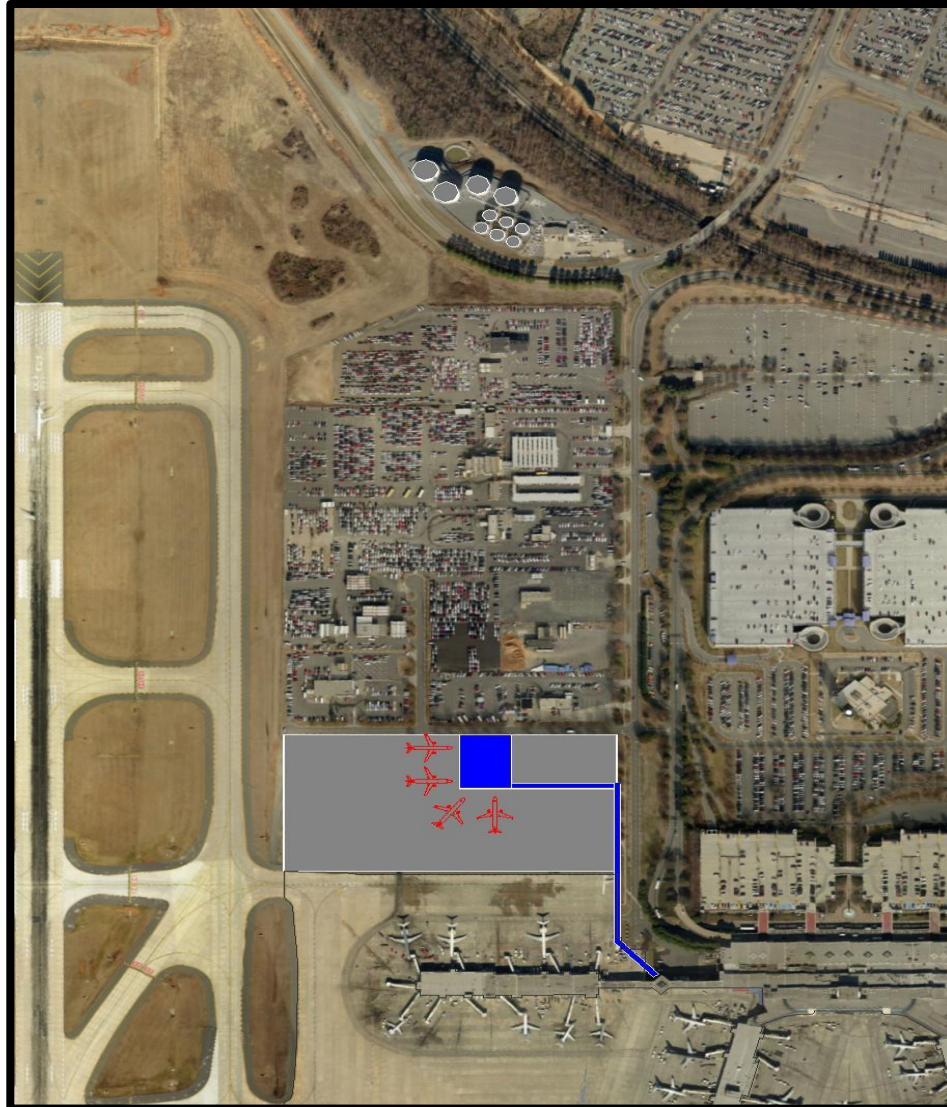
Concourse B Expansion



International Terminal Expansion

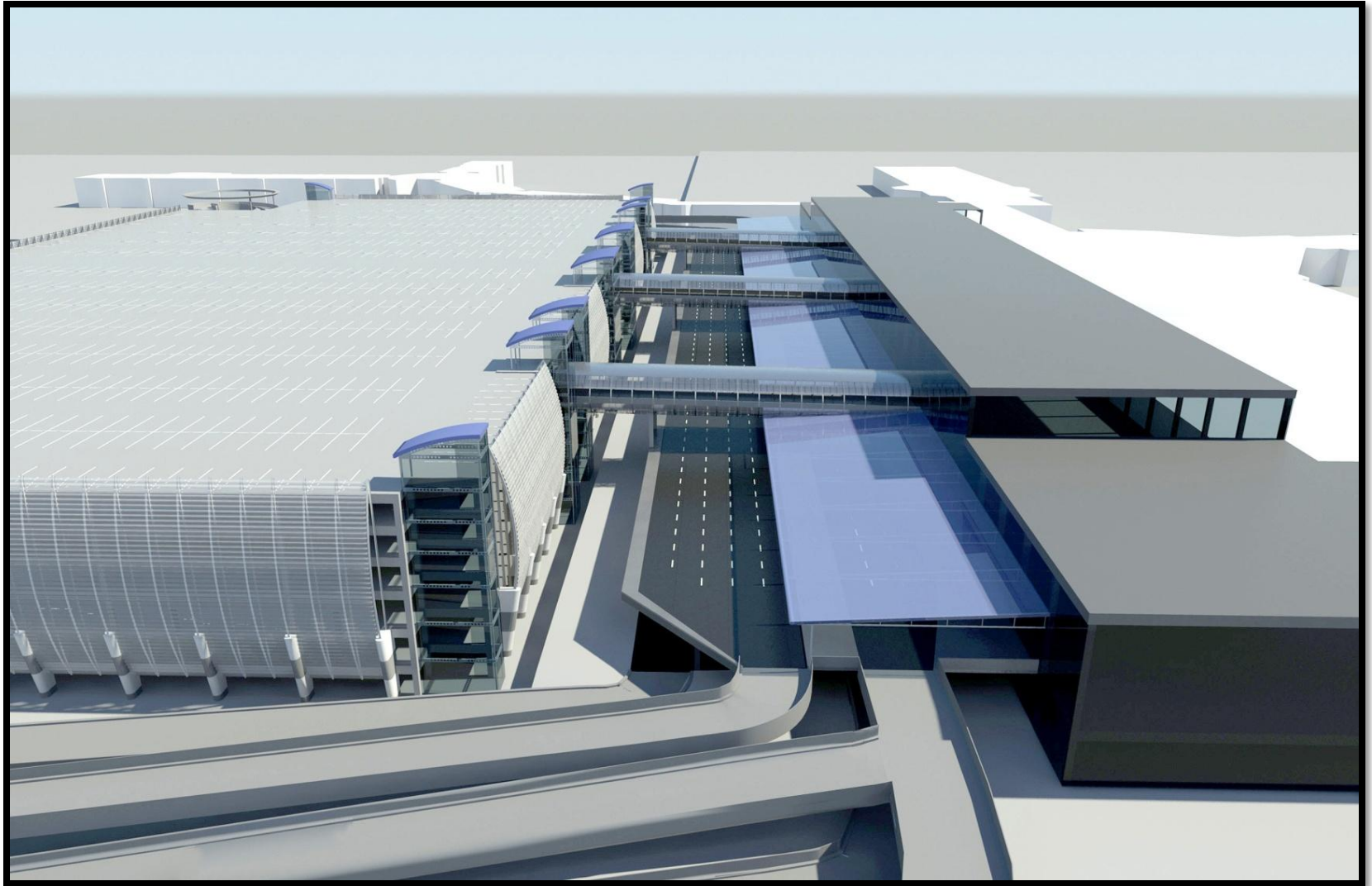


Concourse A Annex

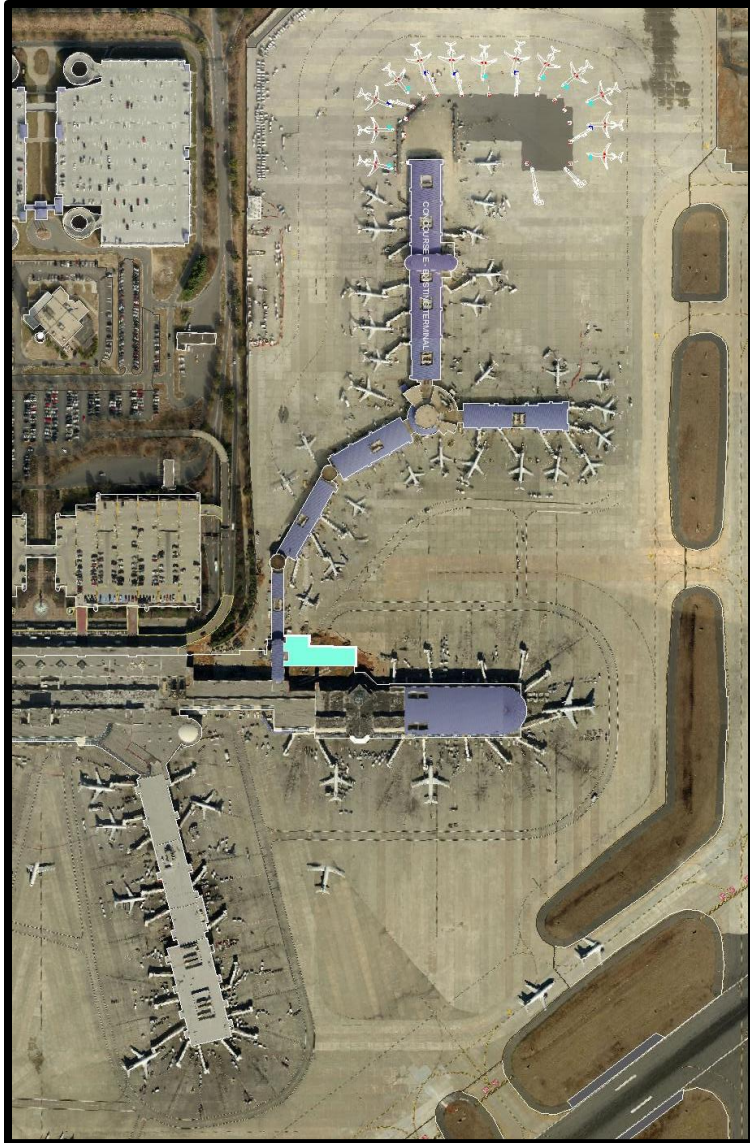


New Valet Deck





Concourse D/E Food Court



Air Traffic Control Tower





CITY OF CHARLOTTE



***City Council Dinner Briefing
August 27, 2012***

CHARMECK.ORG