



MeckLINK Behavioral Healthcare
October 29, 2012

PROVIDER HOT SHEET

- ⇒ **Waiver “Go Live” Date:** The North Carolina Division of Medical Assistance has indicated the “go live” date for MeckLINK Behavioral Healthcare is February 1, 2013.
- ⇒ **Innovations Community Guide and the Current RFP for Three (3) Providers of Agency with Choice combined with Innovations and (b)3 Community Guide Services:**
 In accordance with the NC Division of Medical Assistance contract between DMA and MCOs for services under the 1915(b)(c) waiver, MCOs can conduct competitive Request for Proposal processes that assess provider’s competencies specific to the requirements of the RFP, the service definition, and enrollment requirements. MeckLINK Behavioral Healthcare has released a competitive RFP to select three agencies to provide the combination of Agency with Choice and Community Guide Services for the Innovations Waiver and for (b)3 services.
- ⇒ **For Providers of IPRS Funded Development Therapy:**
 Effective November 5, 2012 no new referrals to Development Therapy will be authorized by the Service Management Division in the preparation for a phase out of this service by June 30, 2013. Existing enrollees receiving Developmental Therapy will be reviewed for continued medical necessity at the time of the next authorization request. If requesting continued service beyond 12/31/2012 providers should include a plan for fading services over the next authorization period. If there are questions, please feel free to contact Service Management by calling Chip Kale at 704-432-2423 or Dr. Caroll Lytch at 704-336-6404.
- ⇒ **Attention Licensed Independent Practitioner Serving Consumer with Medicaid Originating from Mecklenburg County:**
 The Mecklenburg Provider Council is hosting a forum for local Licensed Independent Practitioners who serve Mecklenburg County Medicaid recipients. We want to ensure that each clinician and practice group is aware of the upcoming transition of Mental Health, Substance Abuse, and IDD Services to a Managed Care System under the 1915 b/c Waiver. All LIPs need to enroll with MeckLINK in order to be included in the network after January 1, 2013. This enrollment is required in order to continue receiving Medicaid reimbursement after December 31, 2012. We are inviting all LIPs to come out to an informational forum on Tuesday October 30, 2012 at 9:30am at Calvary United Methodist Church located at 512 West Blvd. Charlotte NC 28202.

MeckLINK Behavioral Healthcare
PROVIDER HOT SHEET
October 29, 2012

ALPHAMCS OVERVIEW SESSIONS

⇒ **Alpha MCS Provider Overview Session Dates:**

The computer application providers will use to do business with MeckLINK is **Alpha MCS.**

⇒ **The overview session agenda is attached. Be sure to print it and bring it with you. Copies will not be distributed at the overview session.**

- ***Overview/Training is mandatory, with priority given initially to providers contracted for IPRS services, which went live October 29th***

- Alpha MCS Provider Overview Sessions will be held on the dates and times below. Due to limited space, registration is required. Locations will be disclosed upon registration. Email us at providerrelations@mecklenburgcountync.gov with the names of your agency's representatives that will be attending.

- October 31, 9-11 a.m. *(all slots have been filled)*

⇒ **There is an on-line training option.** Each staff member that will use the system will have to go through the training and complete the form at the end of the training in order to supply us with the appropriate data. This on-line training is also required for those individuals that attend the overview sessions. Our on-line training consists of videos and includes a quiz type section. At the end of the video, each staff member that needs a login ID will be required to fill out personal information and to supply his/her security officer's name for verification purposes. Videos and manuals are be posted to the For Providers' web site, which you can find here: [For Providers: Training](#)

⇒ **Attention Providers: The Enrollment and Credentialing Process for Licensed Independent Practitioners (LIPs), Group Practices, and Hospital Inpatient, Outpatient, and Emergency Department Services is now open.** The link to download applications and associated documents for Licensed Independent Practitioners (LIPs), Group Practices, and Hospital Inpatient, Outpatient, and Emergency Department Services at the MeckLINK Behavioral Healthcare/Medversant Document Management site is now operational. Providers will use this same site to upload their completed applications. All providers must complete and sign the appropriate MeckLINK Behavioral healthcare Enrollment Application and submit it electronically - along with the required credentials and documents - to our credentialing verification organization, Medversant Technologies, LLC. [Click Here](#) for the LIP, Group Practice and Hospital Provider Enrollment webpage. For questions regarding the LIP, Group Practice, or Hospital Application Process please contact the Provider Relations and Network Development Department at providerrelations@mecklenburgcountync.gov.

Please note: This is not the process for agencies to submit applications for their Licensed Independent Practitioners. MeckLINK Behavioral Healthcare is submitting the agency applications to Medversant and will send an email to agencies instructing them on how to obtain and submit the LIP Application and other required documents upon notification that Medversant has uploaded the agency applications to its database.

MeckLINK Behavioral Healthcare
PROVIDER HOT SHEET
October 29, 2012

- ⇒ **Supports Intensity Scale:** NC's Department of Health and Human Services is improving its service delivery system for people with intellectual and developmental disabilities in order to:
- Create a more equitable system
 - Use resources more effectively and efficiently
 - Make sure people get the right supports for their needs

The first step of this process is to use an objective assessment called the Supports Intensity Scale (SIS) to find out about the support needs of people with I/DD participating in the NC Innovations Waiver. These assessments will occur over the next year for people on the Innovations Waiver or on the Registry of Unmet Needs.

MeckLINK, along with the Developmental Disabilities Training Institute (DDTI), will begin the SIS assessment process in late October. Interviews will be scheduled by DDTI staff and MeckLINK Behavioral Healthcare's Care Coordination Division.

The support of the provider network and existing TCM's is pivotal in the success of this roll out as we go through the transition process and move forward with the Innovations Waiver. Please encourage the people that you and your agency support to participate actively in the process with MeckLINK Behavioral Healthcare and DDTI staff.

If you have any questions, please contact Bev Nagy, SIS Supervisor, at 704-432-2397 or 704-572-7913.

- ⇒ The LME is in the process of holding **public information sessions** that address services for mental health, intellectual and developmental disabilities and substance abuse under the Medicaid waiver. It is an opportunity for consumers and families to get correct information about the changes involving targeted case managements, care coordination, and Innovations. They will also have the opportunity to ask questions and get answers at each session. So far, the sessions have been well attended and there has been positive feedback from those that have attended saying that they are feeling much better after attending and have appreciated the straightforward presentations and questions being answered directly. The schedule for the remaining sessions is below.

Thursday November 8, 2012	Mecklenburg County DSS – Room A/B 301 Billingsley Rd Charlotte, NC 28211	6:30 pm	Focus: IDD
Thursday November 15, 2012	Mecklenburg County DSS – Room A/B 301 Billingsley Rd Charlotte, NC 28211	6:30 pm	Focus: MH/SA
Thursday December 6, 2012	Mecklenburg County DSS – Room A/B 301 Billingsley Rd. Charlotte, NC 28211	6:30 pm	Focus: IDD - Spanish
Thursday December 20, 2012	Mecklenburg County DSS – Room A/B 301 Billingsley Rd. Charlotte, NC 28211	6:30 pm	Focus: MH/SA - Spanish

MeckLINK Behavioral Healthcare
PROVIDER HOT SHEET
October 29, 2012

⇒ **AlphaMCS 837 Claim Submissions and Testing:**

- The MCO will go live with AlphaMCS on 10/29/2012. When submitting 837 files to MeckLINK, providers must follow the *Alpha MCS Companion Guide*. The Companion Guide is located in the [Resource Library](#) on the MCO Website in the *Manual/Guide* section. The document is named “*MeckLINK – 837P 5010 Companion Guide for AlphaMCS*”.
- To verify that you have made the correct changes, files can be submitted for testing. Test files can be sent to ebony.scott@mecklenburgcountync.gov via *SECURE* email for format testing. Results from format testing will be sent through a reply email. If a file fails format testing, a 999 edi file will be sent in a reply email. The 999 file will indicate the reason for rejection.
- If you have questions, please submit them using the [Report a System Issue](#) link on the MCO Website.

⇒ Effective November 19, 2012, The Employment 1st Transition Collaborative will begin to serve as the community resource panel (similar to a Care Review) for youth throughout Mecklenburg who are not connected directly with CMS, CIRCLES, or Special Education programs. We are seeking youth ages 16-24, who are being released from incarceration, aging out of foster care, struggling with physical, mental health, substance abuse challenges, living in shelters or on the streets, doubled up with friends or neighbors, etc. Transitional youth will have monthly opportunities to present themselves to this revamped Transition Collaborative. The goal of the community panel is to link and connect the youth to relevant individuals, programs, and opportunities that will propel them towards their goal.

Beginning in November, they will begin convening on the 3rd Monday of each month at 2pm at Child and Family Services Center located at 601 East 5th Street. They are asking community agencies to participate in 2 meaningful ways:

- 1) Commit to being a member of the Resource Panel to hear presentations from youth in transition.
- 2) Bring youth with whom you are working before the panel to present.

Contact Trasha Black at 704.596.0505 or tblack@genesisproject1.org to participate in either way.

⇒ Your single point of contact for all suggestions, input, feedback, questions and concerns regarding the Hot Sheet should be directed to Chuck Hill, LME Director of Provider Relations and Network Development at Charles.Hill@MecklenburgCountync.gov . [Subscribe](#) to the weekly Hot Sheet releases.

PROVIDER COUNCIL REMINDERS AND UPDATES

⇒ **Provider Council Sub-Committees** – Two standing subcommittees have been formed by the Provider Council. If you are interested or want more information, please contact the committee chairs. The two committees are:

- **Quality Training Management Committee (QTM)** – The purpose of the meetings is to promote best practices collaborative growth in the areas of training and quality management, and understanding and support with regard to state and local processes.
 - ◆ Lisa Davis, Genesis Project 1, 704-596-0505 ldavis@genesisproject1.org
 - ◆ Angela Bunting, BWB Connections, 704-596-5553 Angela.Bunting@connectionsbw.com
 - ◆ Sonyia Richardson. Another Level Counseling & Consultation, 704-548-5298, srichardson@anotherlevelservices.com

MeckLINK Behavioral Healthcare
PROVIDER HOT SHEET
October 29, 2012

- ⇒ **The next scheduled meeting is Wednesday, November 21, 9:00to 10:30 a.m., at Hickory Grove United Methodist Church, 6401 Hickory Grove Road (at the back of the church)**
The Network Development Sub-committee -The purpose is to provide recommendations and feedback to the LME specific to the development of a provider network within a waiver environment and to develop information and learning sessions to assist providers in becoming waiver ready.
- ◆ Jalali Kerr (Co-Chair) Kerr Homes, Inc., 704-779-4376, Jalali@kerr-homes.com
 - ◆ Shari Wright (Co-Chair) Connections BWB, Inc. 704-596-5553, shari.wright@connectionsbw.com
 - ◆ Sonyia Richardson. Another Level Counseling & Consultation, 704-548-5298, srichardson@anotherlevels.com
- ⇒ **The next scheduled meeting is Wednesday, November 21, 10:30 a.m. to 12:00 p.m., at Hickory Grove United Methodist Church, 6401 Hickory Grove Road (at the back of the church)**

EDUCATION AND TRAINING OPPORTUNITIES

- ⇒ **MeckCARES** Training Institute offers a full range of high-quality classroom and now [online courses](#) that meet state service definitions and requirements and will empower you to improve outcomes for youth and families. [Register](#) Today!
- Learn about System of Care principles and practices
 - See how Child and Family Teams should operate
 - Gain knowledge, power and respect to strengthen families and improve lives
- ⇒ **Mecklenburg's PROMISE Recovery and Crisis Training Calendar**–MeckPromise is offering free Wellness, Recovery & Crisis Education classes for consumers and providers at our new location 1041 Hawthorne Lane, Charlotte, NC 28205. Please feel free to drop by and see what we've got going on! For more information on our classes please call the main number at 980-321-4021 or John Cunningham at 980-321-4025 or via email at jcunningham@meckpromise.com. The current training calendar can be viewed at www.meckpromise.com/mptc or can be requested by contacting Mecklenburg's Promise.
- ⇒ **The [LME Monthly AMH Training Calendar](#)** is posted online.
- ⇒ **TIP – Training in Innovation and Practice** –The NC Council of Community Programs and the Administrative Services Organization, a group of providers, continue to offer training to help providers adapt to changing circumstances. For a list of currently scheduled training events and to register, go to www.nc-council.org.
- Mental Health Association (MHA) offers various training opportunities to include [QPR](#) (Question, Persuade, and Refer) suicide prevention training, [QPR Train-the-Trainer](#) certification course, [MentalHealth First Aid USA](#), and [Creating a Ripple of Hope: Telling Your Story & Inspiring Positive Change – Advocacy 101 for Consumers & Their Caregivers](#). Please [visit website](#) or call 704-365-3454 for more information.

MeckLINK Behavioral Healthcare
PROVIDER HOT SHEET
October 29, 2012

WEB RESOURCES

[NC Division of MH/DD/SAS](#)
[NC Division of MH/DD/SAS Provider Endorsement Information](#)
[NC Division of MH/DD/SAS Implementation Updates](#)
[Mecklenburg AMH](#)
[AMH Hot Sheet Archive](#)
[1915 \(b\)\(c\) Waiver Updates from Division Medical Assistance](#)
[Comparison: NC Innovations and CAP-MR/DD Waivers](#)
[LME-MCO Appeal Process \(per federal CFR 438.400\)](#)
[AMH Provider Document Library](#)

Provider Training Agenda

- I. Welcome
 - a. New AlphaMCS
 - b. Go live date
 - c. Explain Q&A time

- II. Basic Functionality
 - a. Zoom in/out
 - b. Logging in
 - i. E-mail address is the User name
 - ii. This is set up by the MCO
 - c. Moving between tiles
 - d. Get more detail in a record
 - e. Which fields are required
 - f. Tabs on left hand side
 - g. Filter button
 - h. Look up a patient (at least two fields required, name + SSN/DOB/ID/Insurance)
 - i. Active checkbox
 - j. User visit history

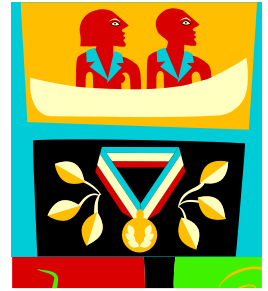
- III. Provider Details
 - a. Info providers have sent the MCO
 - b. If it needs to be updated, contact the MCO

- IV. Scheduler
 - a. How this is similar to current scheduler
 - b. How to indicate open time for referrals
 - c. How to remove open time
 - d. How to accept an appointment
 - e. How to reschedule an appointment
 - f. How to deny an appointment
 - g. Follow-up after appointment

- V. Enrollment
 - a. For state insurance ONLY
 - b. Clients in the old system will be in the new system
 - c. Search for the Patient and see if their insurance is active
 - d. If not, go to Enrollments
 - e. Go through tiles
 - f. What shows automatically
 - g. Filtering for other records
 - h. Creating an enrollment
 - i. Go in depth on how to complete screening portion

- j. Save vs. Submit
 - k. Review
- VI. Clinical Update Request
- a. Go through tiles
 - b. What shows automatically
 - c. Filtering for other records
 - d. Creating a clinical update request
 - e. Under Comments, enter what you changed
 - f. Save vs. Submit
 - g. Review
- VII. PCP/Treatment Plan
- a. Go through tiles
 - b. What shows automatically
 - c. Filtering for other records
 - d. Create a PCP
 - e. Save vs. Submit
 - f. Timeline at bottom
 - g. Review
- VIII. SAR
- a. Go through tiles
 - b. What shows automatically
 - c. Filtering for other records
 - d. Show SAR
 - e. Save vs. Submit
 - f. Timeline at bottom
 - g. Look for review comments on SAR under review
 - h. Show guidelines/service defs in Docs tab
 - i. Respond to comments
 - j. Explain appeal
- IX. Authorization/Denial
- a. Allows you to view an authorization
 - b. How to print an auth letter
- X. Claims
- a. Go through tiles
 - b. CMS 1500 vs. UB-04
 - c. What shows automatically
 - d. Filtering for other records
 - e. Creating a CMS 1500
 - f. Ability to copy a claim

- g. Save vs. Submit
- XI. Transactional Upload/Download
 - a. What is uploaded and how
 - b. What is downloaded and how
- XII. Discharge Requests
 - a. Go through tiles
 - b. What shows automatically
 - c. Submitting a discharge request
 - d. Save vs. Submit
- XIII. Reset Password
 - a. How to
- XIV. Final Q&A



Presents

CBT Supervision & Leadership Training

**Friday, October 26th, 2012
Friday, November 2nd, 2012
9am-5pm**

--LOCATION: The University of North Carolina at Charlotte 9201 University City Boulevard Charlotte, NC 28223-0001. Training will take place in the College of Education Building room 203.

REGISTRATION: Register online: www.genesisproject1.org (Registration fees will be payable via PayPal)

***Total training hours: 12**

****Cost: \$100.00**

****Plus: \$10 fee for CEU's.**

****Recording device needed. Examples are a cell phone, a tape recorder, iPod/iPod, etc.**



Dr. Susan Furr is a licensed psychologist who received her PhD from the University of North Carolina at Chapel Hill. She has worked as a school counselor, a psychologist at a university counseling center, and currently is a Professor in the Department of Counseling at the University of North Carolina at Charlotte. She has published on topics such as college student suicide, grief and loss counseling, career counseling, and development of counseling students. A major focus of her training has been in the area of cognitive therapy.

For more information on this Cognitive Behavioral Therapy Supervision Training, please contact, Lisa Davis, Training Director at Genesis Project 1, Inc. (704.596.0505)[ldavis@genesisproject1.org]

- MENTAL HEALTH
- DEVELOPMENTAL
DISABILITIES
- SUBSTANCE ABUSE

NORTH CAROLINA
**COUNCIL OF
 COMMUNITY
 PROGRAMS**

Presents

LOCUS/CALOCUS Train the Trainer

December 3 - 4, 2012

Dr. Carlton Watkins Center
 3500 Ellington Street
 Charlotte NC, 28211

9:00 a.m. - 4:00 p.m.

There are 10 CE credits available for APA, NBCC & ASWB

This two-day training program prepares MCOs and providers to use the required level of care instruments - the LOCUS for adults and the CALOCUS for children and adolescents. The training includes an overview of the instruments, instructions on how to complete them, and case study practice to establish inter-rater reliability in using the instruments to determine an appropriate level of care.

Cost - \$350

Register by November 16th and receive an "Early Bird" discount of 15%. Registration is first come, first serve. Registration is open till 11/28/12 or until training is full.

For more information contact Laura Ring at (919) 327-1520 or email laura@nc-council.org.

Who Should Attend?

The training is relevant for staff involved in care coordination, or other functions for which knowledge about level of care instruments is important. This training is also appropriate for providers who will be using or interpreting the tool for Utilization Management Purposes. **This is a Train-the-Trainer class** so participants will learn how to train others within their organization.

What Will I Learn?

On the first day of the training participants learn about the LOCUS and how to appropriately use it. Participants also get "hands on" case study application of the tool to establish inter-rater reliability. In the afternoon participants will learn how to teach this content to providers within their local communities. On the second day of the training the same format will be applied to teach the CALOCUS.

Faculty

Elizabeth Burgess, Training Coordinator for Western Highlands

Elizabeth is a highly skilled trainer and LCSW. She has been trained in the LOCUS and CALOCUS by Deerfield Behavioral Health Network and completed the Deerfield train-the-trainer program. She has trained numerous professionals within Western Highlands MCO and its provider system. She provides an added benefit of having real life experience using these instruments in NC's MCO environment.

WHERE: Dr. Carlton Watkins Center, 3500 Ellington Street, Charlotte NC, 28211

LOCUS/CALOCUS Train the Trainer

December 3-4, 2012
9 AM – 4 PM

REGISTRATION FORM

ON LINE REGISTRATION AVAILABLE
WWW.NC-COUNCIL.ORG with a Credit Card

OR

Use Registration Form below and Mail with a Check to:
NC Council of Community Programs, 505 Oberlin Road, Suite 100 Raleigh, NC 27605
(Please note this is **NOT** the training location.)

___ I am registering **by Nov. 16 for the 15% Discount** on Dec 3 - 4 LOCUS/CALOCUS- \$297.50

___ I am registering for LOCUS/CALOCUS Training December 3 - 4, 2012 - \$350.00

PLEASE BE ADVISED – The training starts promptly at the times stated above and the registration table will close shortly after the scheduled start time.

Cancellation Policy: You must cancel 3 business days (before 5:00 p.m.) prior to the training event in order to receive refund on your registration. If cancellation is not made at this time, no refund will be given. A \$15 administrative processing fee will be charged for all cancellations.

**Training Location: Dr. Carlton Watkins Center
3500 Ellington Street
Charlotte NC, 28211**

For more information contact Laura Ring at (919) 327-1500 or email laura@nc-council.org .

ALL FIELDS MUST BE COMPLETED and CHECK INCLUDED FOR MAIL IN REGISTRATION

NAME/TITLE _____

ORGANIZATION _____

BILLING ADDRESS _____

CITY _____ STATE _____ ZIP _____

PHONE _____ EMAIL (must complete) _____