



MECKLENBURG COUNTY
Area Mental Health, Developmental Disabilities and
Substance Abuse Services
September 24, 2012

PROVIDER HOT SHEET

- ⇒ **Attention Providers:** The Enrollment and Credentialing Process for Licensed Independent Practitioners (LIPs), Group Practices, and Hospital Inpatient, Outpatient, and Emergency Department Services is now open. The link to download applications and associated documents for Licensed Independent Practitioners (LIPs), Group Practices, and Hospital Inpatient, Outpatient, and Emergency Department Services at the MeckLINK Behavioral Healthcare/Medversant Document Management site is now operational. Providers will use this same site to upload their completed applications. All providers must complete and sign the appropriate MeckLINK Behavioral healthcare Enrollment Application and submit it electronically - along with the required credentials and documents - to our credentialing verification organization, Medversant Technologies, LLC. [Click Here](#) for the LIP, Group Practice and Hospital Provider Enrollment webpage. For questions regarding the LIP, Group Practice, or Hospital Application Process please contact the Provider Relations and Network Development Department at providerrelations@mecklenburgcountync.gov.
- ⇒ **Extension of Submission Date for the Agency Application Process for participation in the 1915(b)(c) waivers through MeckLINK Behavioral Healthcare:** Due to September 30, 2012 falling on a Sunday, MeckLINK Behavioral Healthcare has extended the deadline for acceptance of Agency Applications to be included in the Standard Review process. Provider Applications received prior to 12:00 PM, October 1, 2012 will be part of the Standard Review process. Provider Applications received after 12:00 PM, October 1, 2012 will be processed in the order they are received. MeckLINK Behavioral Healthcare expects a large volume of provider applications and cannot guarantee applications received after 12:00 PM, October 1, 2012 will be processed prior to January 1, 2013. For questions regarding the Agency Application Process please contact the Provider Relations and Network Development Department at providerrelations@mecklenburgcountync.gov.

INFOSHARE

- ⇒ **The next InfoShare will be Wednesday, October 3, 2012, 9-11 a.m., at Covenant Presbyterian Church, at 1000 East Morehead St.**

The primary focus of this InfoShare is training that will provide an **overview of the Service Management Division and what providers can expect from UM and the call center** as we move into the waiver and post waiver.

- Speakers will discuss:
 - Overview of Service Management
 - Review of Medical Necessity Criteria
 - Review of UM Guidelines and Timeframes

Mecklenburg Area MH/DD/SA Services
PROVIDER HOT SHEET
September 24, 2012

⇒ **Alpha MCS Provider Overview/Training Dates:**

The computer application providers will use to do business with MeckLINK is **Alpha MCS**.

- ***Training is mandatory, with priority given initially to providers contracted for IPRS services, which will go live October 29th***
 - October 10 at Covenant Presbyterian off Morehead, 9-11 a.m. (Registration is NOT required for October 10th overview), at 1000 East Morehead St.
 - Additional Alpha MCS Provider Overview/Trainings will be held on the dates and times below. Due to limited space, registration is required. Locations will be disclosed upon registration. Email us at providerrelations@mecklenburgcountync.gov with the names of your agency's representatives that will be attending.
 - October 17, 9-11 a.m.
 - October 24, 9-11 a.m.
 - October 31, 9-11 a.m.

⇒ The following **LME policies have been updated in the Provider Resource Library** on the AMH Public Website. The UM-11 Standard Time Frames policy will also be posted on the Consumer Public Website.

- CO-07 Person Centered Planning Policy
- IM-22 Disciplinary Action for Confidentiality Violations
- UM-11 Standard Timeframes Policy

All LME Policies and Plans are reviewed at least annually and revised and updated as needed. If you have any questions regarding one of the policies, please contact the Service Analyst assigned to your agency.

⇒ **Attention Providers:** Effective immediately, when requesting a Care Review Team Session in order to have a child placed out of state, please ensure that you have already applied to all in- state PRTF facilities and have received written denial letters. Care Review Sessions will not be scheduled if you have not received denials in advance. Providers can still request Care Review Sessions as needed for assistance with problem solving & strategizing, consensus building and plan development, etc.

⇒ **Attention All Providers:** Please remember to notify your assigned Service Analyst when your agency decides to no longer provide a service or has stopped taking new referrals. This will ensure that your agency is removed as a choice for consumers in our provider directory and with our MeckLINK Department.

⇒ **Attention TCM providers serving individuals with I/DD:**

Please note that Roselyn Love, LPA (Roselyn.Love@MecklenburgCountync.gov 704-336-7455) and Chiquitta Thomas, LCSW (Chiquitta.Thomas@Mecklenburgcountync.gov 980-314-8664) are now the points of contact for the following activities of the UM Department of MeckLINK Behavioral Healthcare: 1) review and signature of MR2 forms for CAP Continued Need Reviews, 2) requests for letters of support for Guardian as Paid Provider for CAP participants, and 3) notification regarding potential termination of a participant from the CAP Waiver due to service breaks approaching the 30 day limit.

Mecklenburg Area MH/DD/SA Services
PROVIDER HOT SHEET
September 24, 2012

MeckLINK Behavioral Healthcare on the Move

- ⇒ Effective September 19, 2012, Stephanie Porter, LPC has joined the Service Management Division as the Senior Manager for Customer Service. Stephanie has an accomplished background in emergency services and crisis management. She previously managed the ACCESS Call Center for Pathway's LME (Partners). Stephanie will be responsible for the operational management of the clinical and administrative functions of the Customer Service Call Center.
- ⇒ **New ICD-10 Deadline Set for October 1, 2014:** On August 24, the Department of Health and Human Services (HHS) announced the final rule that extends the International Classification of Diseases, 10th Edition (ICD-10), compliance date from Oct. 1, 2013, to Oct. 1, 2014. In addition to codes that allow for greater specificity when classifying diseases and health problems, ICD-10 includes codes for new procedures and diagnoses aimed at improving the amount of detailed information available to healthcare providers for quality improvement and payment purposes. To view the complete release, [click here](#). For more information regarding NCTracks and the ICD-10 implementation; visit the OMMISS website at ncmmis.ncdhhs.gov. From the top navigation you can access more detailed information regarding both NCTracks and ICD-10 activities by clicking on the appropriate link.
- ⇒ Your single point of contact for all suggestions, input, feedback, questions and concerns regarding the Hot Sheet should be directed to Chuck Hill, LME Director of Provider Relations and Network Development at Charles.Hill@MecklenburgCountync.gov . [Subscribe](#) to the weekly Hot Sheet releases.

PROVIDER COUNCIL REMINDERS AND UPDATES

- ⇒ **Provider Council Sub-Committees** – Two standing subcommittees have been formed by the Provider Council. If you are interested or want more information, please contact the committee chairs. The two committees are:
- **Quality Training Management Committee (QTM)** – The purpose of the meetings is to promote best practices collaborative growth in the areas of training and quality management, and understanding and support with regard to state and local processes.
 - ◆ Lisa Davis ,Genesis Project 1, 704-596-0505 ldavis@genesisproject1.org
 - ◆ Angela Bunting, BWB Connections, 704-596-5553 Angela.Bunting@connectionsbw.com
 - ◆ Sonyia Richardson. Another Level Counseling & Consultation, 704-548-5298, srichardson@anotherlevels.com
- ⇒ **The next scheduled meeting is Wednesday, October 17, 9:00to 10:30 a.m., at Hickory Grove United Methodist Church, 6401 Hickory Grove Road (at the back of the church)**
- The Network Development Sub-committee** -The purpose is to provide recommendations and feedback to the LME specific to the development of a provider network within a waiver environment and to develop information and learning sessions to assist providers in becoming waiver ready.
- ◆ Jalali Kerr (Co-Chair) Kerr Homes, Inc., 704-779-4376, Jalali@kerr-homes.com
 - ◆ Shari Wright (Co-Chair) Connections BWB, Inc. 704-596-5553, shari.wright@connectionsbw.com
 - ◆ Sonyia Richardson. Another Level Counseling & Consultation, 704-548-5298, srichardson@anotherlevels.com

Mecklenburg Area MH/DD/SA Services
PROVIDER HOT SHEET
September 24, 2012

- ⇒ **The next scheduled meeting is Wednesday, October 17, 10:30 a.m. to 12:00 p.m., at Hickory Grove United Methodist Church, 6401 Hickory Grove Road (at the back of the church)**
- ⇒ Finally, the MH/IDD/SA Rally Planning Committee will meet directly following the Network Development meet from 12:00 to 1:00PM.

EDUCATION AND TRAINING OPPORTUNITIES

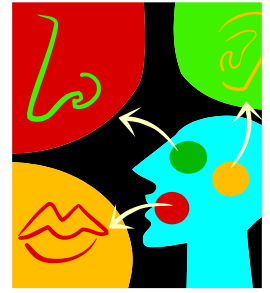
- ⇒ **MeckCARES** Training Institute offers a full range of high-quality classroom and now [online courses](#) that meet state service definitions and requirements and will empower you to improve outcomes for youth and families. [Register](#) Today!
- Learn about System of Care principles and practices
 - See how Child and Family Teams should operate
 - Gain knowledge, power and respect to strengthen families and improve lives
- ⇒ **Mecklenburg's PROMISE Recovery and Crisis Training Calendar**—MeckPromise is offering free Wellness, Recovery & Crisis Education classes for consumers and providers at our new location 1041 Hawthorne Lane, Charlotte, NC 28205. Please feel free to drop by and see what we've got going on! For more information on our classes please call the main number at 980-321-4021 or John Cunningham at 980-321-4025 or via email at jcunningham@meckpromise.com. The current training calendar can be viewed at www.meckpromise.com/mptc or can be requested by contacting Mecklenburg's Promise.
- ⇒ **The [LME Monthly AMH Training Calendar](#)** is posted online.
- ⇒ **TIP – Training in Innovation and Practice** –The NC Council of Community Programs and the Administrative Services Organization, a group of providers, continue to offer training to help providers adapt to changing circumstances. For a list of currently scheduled training events and to register, go to www.nc-council.org.

Mental Health Association (MHA) offers various training opportunities to include [QPR](#) (Question, Persuade, and Refer) suicide prevention training, [QPR Train-the-Trainer](#) certification course, [MentalHealth First Aid USA](#), and [Creating a Ripple of Hope: Telling Your Story & Inspiring Positive Change – Advocacy 101 for Consumers & Their Caregivers](#). Please [visit website](#) or call 704-365-3454 for more information.

WEB RESOURCES

[NC Division of MH/DD/SAS](#)
[NC Division of MH/DD/SAS Provider Endorsement Information](#)
[NC Division of MH/DD/SAS Implementation Updates](#)
[Mecklenburg AMH](#)
[AMH Hot Sheet Archive](#)
[1915 \(b\)\(c\) Waiver Updates from Division Medical Assistance](#)
[Comparison: NC Innovations and CAP-MR/DD Waivers](#)
[LME-MCO Appeal Process \(per federal CFR 438.400\)](#)
[AMH Provider Document Library](#)

MPC
Mecklenburg Provider Council



Presents

Cognitive Behavioral Therapy Training

**September 21st, 24th & 25th, 2012
9am-5pm**

--LOCATION: IKEA located at 8300 IKEA Boulevard Charlotte, NC 28262
Phone number: (704) 549-4532. The training room is located at the top of the store entrance escalator to the right.

REGISTRATION: Register online: www.genesisproject1.org (Registration fees will be payable via Pay-pal)

*Total training hours: 24 hours including class time and additional reading and assignments.

****Cost:** 135.00 (Plus \$10 fee for CEU's.)



Dr. Susan Furr is a licensed psychologist who received her PhD from the University of North Carolina at Chapel Hill. She has worked as a school counselor, a psychologist at a university counseling center, and currently is a Professor in the Department of Counseling at the University of North Carolina at Charlotte. She has published on topics such as college student suicide, grief and loss counseling, career counseling, and development of counseling students. A major focus of her training has been in the area of cognitive therapy.

For more information on this Cognitive Behavioral Therapy Training, please contact, Lisa Davis, Training Director at Genesis Project 1, Inc. (704.596.0505)[ldavis@genesisproject1.org]

MPC Mecklenburg Provider Council

TRAINING REGISTRATION FORM

Training Title:

Cognitive Behavioral Therapy Training

September 21st, 24th & 25th, 2012

Complete the information below and fax this form to Lisa Davis at (704) 596-0507.

Please type or print

AGENCY INFORMATION

Agency's Name: _____

Agency's Contact Person: _____

Contact Person Phone: _____ Email: _____

-Participant (s) attending

Name (please print)	Email Address (Required)	Phone Number

*If there are more than 12 participants from your agency, please use another registration form.

SESSION & ATTENDEE INFORMATION

(Limit 50 per session. See the training flyer for times and locations)

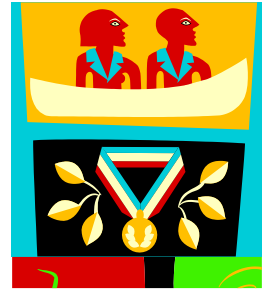
	Number purchasing	Total Cost
Training Fee \$135		
CEU's \$10.00		
TOTAL FEE		

PAYMENT INFORMATION

We accept payment through Pay-pal, certified checks and Money orders.

Training is limited to 50 persons per session. All required Handouts are sent to participants prior to the training date and participants are responsible for bringing to the session. The training fee is nonrefundable and cannot be applied to a future training. Register early, space is limited. Participants who arrive more than 15 minutes late will NOT be admitted to the training session. Full attendance and active participation is expected in order to receive training certificate (i.e. No partial credit will be given.) Disruptive participants will be asked to leave the class. The Provider Network does not keep certificate copies so all participants will need to make all necessary copies and storage arrangements as copies of lost certificates will NOT be available in the future. Please note that these sessions will be videotaped and all participants will be asked to sign a consent form. Should you have any questions, please contact Lisa Davis or Sharday Black at (704) 596-0505

MPC
Mecklenburg Provider Council



Presents

CBT Supervision & Leadership Training

**Friday, October 26th, 2012
Friday, November 2nd, 2012
9am-5pm**

--LOCATION: The University of North Carolina at Charlotte 9201 University City Boulevard Charlotte, NC 28223-0001. Training will take place in the College of Education Building room 203.

REGISTRATION: Register online: www.genesisproject1.org (Registration fees will be payable via PayPal)

***Total training hours: 12**

****Cost: \$100.00**

****Plus: \$10 fee for CEU's.**

****Recording device needed. Examples are a cell phone, a tape recorder, iPod/iPod, etc.**



Dr. Susan Furr is a licensed psychologist who received her PhD from the University of North Carolina at Chapel Hill. She has worked as a school counselor, a psychologist at a university counseling center, and currently is a Professor in the Department of Counseling at the University of North Carolina at Charlotte. She has published on topics such as college student suicide, grief and loss counseling, career counseling, and development of counseling students. A major focus of her training has been in the area of cognitive therapy.

For more information on this Cognitive Behavioral Therapy Supervision Training, please contact, Lisa Davis, Training Director at Genesis Project 1, Inc. (704.596.0505)[ldavis@genesisproject1.org]

MPC

Mecklenburg Provider Council

TRAINING REGISTRATION FORM

Training Title:

CBT Supervision & Leadership Training

October 26th & November 2nd, 2012

Complete the information below and fax this form to Lisa Davis at (704) 596-0507.

Please type or print

AGENCY INFORMATION

Agency's Name: _____

Agency's Contact Person: _____

Contact Person Phone: _____ **Email:** _____

-Participant (s) attending

Name (please print)	Email Address (Required)	Phone Number

*If there are more than 12 participants from your agency, please use another registration form.

SESSION & ATTENDEE INFORMATION

(Limit 30 per session. See the training flyer for times and locations)

	Number purchasing	Total Cost
Training Fee \$100.00		
CEU's \$10.00		
TOTAL FEE		

PAYMENT INFORMATION

We accept payment through Pay-pal, certified checks and Money orders.

Training is limited to 50 persons per session. All required Handouts are sent to participants prior to the training date and participants are responsible for bringing to the session. The training fee is nonrefundable and cannot be applied to a future training. Register early, space is limited. Participants who arrive more than 15 minutes late will NOT be admitted to the training session. Full attendance and active participation is expected in order to receive training certificate (I.e. No partial credit will be given.) Disruptive participants will be asked to leave the class. The Provider Network does not keep certificate copies so all participants will need to make all necessary copies and storage arrangements as copies of lost certificates will NOT be available in the future. Please note that these sessions will be videotaped and all participants will be asked to sign a consent form.

Should you have any questions, please contact Lisa Davis or Sharday Black at (704) 596-0505