



MECKLENBURG COUNTY
Area Mental Health, Developmental Disabilities and
Substance Abuse Services
 June 25, 2012

PROVIDER HOT SHEET

⇒ **Quarterly Provider InfoShare Meeting:** Plan to attend the next quarterly Provider InfoShare meeting to be held on Wednesday, July 11, 2012 from 9:00 until 11:00 at Covenant Presbyterian Church, Fellowship Hall, 1000 E. Morehead Street, Charlotte.

⇒ **Annual Survey** - It is time for the mandatory Annual Cultural Competence and Disaster Response Survey. We are continuing the practice of offering you the opportunity to complete the Survey prior to the July Info Share Meeting on July 11th. You can find the Survey in the Provider Resource Library under Forms on the LME's Public Web Page at the following link: [Provider Documents](#)

You can bring the survey to Info Share and turn it in there, or fax, mail or email it to Carol Goerner, Sr. Quality and Training Specialist with the Quality Improvement Division. Her contact information is on the Survey. In the future, this information will be gathered as part of the Network Provider Application.

⇒ The LME is once again asking for your feedback about your satisfaction with the LME's various services:

- **Forensic Evaluations**
- **Utilization Management**
- **MeckLINK – Call Center**
- **Network Development and Provider Relations**

A very brief (6 question) survey can be found at the link below. If you have not already taken this survey, please participate by Friday, June 29th. Thank you for your help. [LME Survey](#)

⇒ **Presentation Video:** The Plan for Transition from Targeted Case Management to Innovations Care Coordination: A special Provider InfoShare meeting targeting IDD agency Clinical Directors, Program Managers and Supervisors was held on Wednesday, June 20, 2012 at Covenant Presbyterian Church. The purpose of this special InfoShare was to present MeckLINK Behavioral Healthcare's proposed plan for Innovations Care Coordination including the Targeted Case Management transition process. The presentation by Beth Monaco, LME Senior Manager for Innovations Care Coordination, was an interactive session. Providers were encouraged to ask questions and provide input and feedback to the proposed plan. The presentation was recorded and has been added to the "LME MCO Update" section on the front page of the Mecklenburg AMH website or can be access through the following link: [Presentation Video](#)

⇒ **Agency Application Process for participation in the 1915(b)(c) waivers through MeckLINK Behavioral Healthcare:** MeckLINK Behavioral Healthcare has posted the DMA Standardized Enrollment Application for Agencies on the [Provider Home Page](#). In addition, MeckLINK Behavioral Healthcare has posted narrative instructions and a process map for the application process, an application review check sheet, a policy and procedure review check sheet, and a self-study review sheet. It is MeckLINK Behavioral Healthcare's desire for providers to successfully complete the application process and become a contracted partner in the provider network. To be successful in the application process, providers must read and adhere to the instructions for the application. Provider Applications received prior to 5:00 PM, July 25, 2012 will be part of the Expedited Review process. Provider Applications submitted and/or received after 5:00PM, September 30, 2012 will be processed in the order they are received. MeckLINK

Mecklenburg Area MH/DD/SA Services
PROVIDER HOT SHEET
June 25, 2012

Behavioral Healthcare expects a large volume of provider applications and cannot guarantee the application will be processed prior to January 1, 2013.

Please note that the DMA Standardized Enrollment Application for Agencies is geared specifically to CABHAs, Specialty Service Providers, ICF-MR Providers, Innovations Providers (formerly CAP-MR), Other Enhanced Benefit Providers, and Incorporated Providers delivering services other than or in addition to Outpatient Behavioral Health Services. This is not the application for Licensed Independent Practitioners (LIPs) or Group/Outpatient Practices will complete to join the network. MeckLINK Behavioral Healthcare is currently finalizing the LIP application and process and will release it in the very near future. When the LIP application is released it will also include narrative instructions and a process map for LIPs and/or Group/Outpatient Practices to follow.

In keeping with the N.C. Medicaid Special Bulletin, eligibility for providers/practitioners to join the network is based on having submitted claims for Medicaid services provided to consumers with Medicaid originating from Mecklenburg County during the 60 days prior to submitting an application. If a provider is actively serving consumers with Medicaid originating from Mecklenburg County and has not submitted claims for those consumers during the 60 days prior to submitting their application, the provider must show evidence of actively serving those consumers. Additionally, providers should not view this as an opportunity to expand their service array. MeckLINK Behavioral Healthcare will only approve and contract for the services a provider has submitted claims for during the sixty (60) days prior to application or is actively providing to consumers with Medicaid originating from Mecklenburg County.

After December 31, 2012, MeckLINK Behavioral Healthcare will operate a closed network. Once the Network is closed, provider recruitment for new services and gaps in services will be addressed through MeckLINK Behavioral Healthcare's Request for Proposal (RFP) process.

For questions regarding the Agency Application Process please contact Chuck Hill at Charles.Hill@mecklenburgcountync.gov.

- ⇒ **CAP I/DD Waiver** - The North Carolina Division of Medical Assistance has been notified that the current CAP MR/DD Waiver will be extended beyond the planned 6/28/12 end date. Therefore, implementation of the CAP I/DD Waiver will be delayed until further notification. Targeted Case Managers should advise participants and families of this notice. Updated information is anticipated in the coming week and will be communicated through the Hot Sheet. Please note that this change has no bearing on the scheduled implementation of the Innovations Waiver in January 2013.
- ⇒ **A Communication Bulletin #123 regarding information about the 1915 b/c Waiver has been posted to the Division's web site at:** [Communication Bulletin](#)

The Bulletin includes fact sheets that address the following topics:

- What is the 1915(b)(c) Medicaid Waiver?
- How is North Carolina implementing the 1915(b) (c) Medicaid Waiver?
- Why are Local Management Entities merging?

- ⇒ **The final month of this fiscal/contract year is here.** The last day for submitting a Request for Reimbursement of any expenditure based item in your contract with the Area Mental Health LME is July 6, 2012.

Mecklenburg Area MH/DD/SA Services
PROVIDER HOT SHEET
June 25, 2012

⇒ The following LME policies have been updated in the Provider Resource Library on the AMH Public Website:

- CO-05 Exchange of Information for Continuity of Care
- CO-06 Incident Management
- CO-08 Crisis Services Policy
- CR-06 Ongoing Monitoring of Sanctions Complaints against LIPs
- CR-08 Re-credentialing LIPs
- CR-09 Results of Primary Source Verification
- CR-10 Review of Performance Data
- CR-11 Site Visits for LIPs
- CR-15 Quality of Care Review and Appeals (Physicians)
- HCC-06 Screening, Triage and Referral Policy
- HCC-09 Provider Compliance with STR Requirements
- IM-31 Adoption Records
- LME-16 Communication Practices Policy
- LME-17 Out of State Placement
- PO-04 Assessment of Adequacy of Provider Community
- UM-04 Availability and Communication with UM Staff
- UM-24 Protocol for Review of Medical Care Coordination

All LME Policies are reviewed at least annually and revised and updated as needed. If you have any questions regarding one of the policies, please contact the Service Analyst assigned to your agency.

⇒ Your single point of contact for all suggestions, input, feedback, questions and concerns regarding the Hot Sheet should be directed to Chuck Hill, LME Director of Network Development and Provider Relations at Charles.Hill@MecklenburgCountync.gov . [Subscribe](#) to the weekly Hot Sheet releases

PROVIDER COUNCIL REMINDERS AND UPDATES

⇒ **Provider Council Sub-Committees** – Two standing subcommittees have been formed by the Provider Council. If you are interested or want more information, please contact the committee chairs. The two committees are:

- **Quality Training Management Committee (QTM)** – The purpose of the meetings is to promote best practices collaborative growth in the areas of training and quality management, and understanding and support with regard to state and local processes.

- ◆ Lisa Davis ,Genesis Project 1, 704-596-0505 ldavis@genesishproject1.org
- ◆ Angela Bunting, BWB Connections, 704-596-5553 Angela.Bunting@connectionsbw.com
- ◆ Sonyia Richardson. Another Level Counseling & Consultation, 704-548-5298 srichardson@anotherlevelservices.com

⇒ > **The next scheduled meeting is Wednesday, July 18th, 2012 at 9 AM in the Carlton Watkins Center Multipurpose room.**

- **Provider Outreach Sub-Committee has transformed into the Network Development Sub-committee.** The purpose is to provide recommendations and feedback to the LME specific to the development of a provider network within a waiver environment and to develop information and learning sessions to assist providers in becoming waiver ready.

- ◆ Shari Wright (Co-Chair) Connections BWB, Inc. 704-596-5553, shari.wright@connectionsbw.com

⇒ > **The next scheduled meeting is Wednesday, July 18th, 2012 at 11 AM in the Carlton Watkins Center Multipurpose room.**

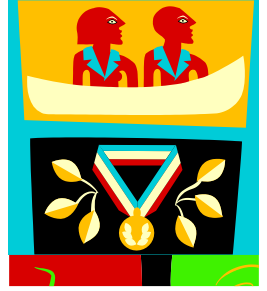
Mecklenburg Area MH/DD/SA Services
PROVIDER HOT SHEET
 June 25, 2012

EDUCATION AND TRAINING OPORTUNITIES

- ⇒ MeckCARES Training Institute offers a full range of high-quality classroom and now [online courses](#) that meet state service definitions and requirements and will empower you to improve outcomes for youth and families. [Register](#) Today!
- Learn about System of Care principles and practices
 - See how Child and Family Teams should operate
 - Gain knowledge, power and respect to strengthen families and improve lives
- ⇒ **Mecklenburg's PROMISE Recovery and Crisis Training Calendar** - MeckPromise is offering free Wellness, Recovery & Crisis Education classes for consumers and providers at our new location 1041 Hawthorne Lane, Charlotte, NC 28205. Please feel free to drop by and see what we've got going on! For more information on our classes please call the main number at 980-321-4021 or John Cunningham at 980-321-4025 or via email at jcunningham@meckpromise.com to request a current calendar.
- ⇒ **The [LME Monthly AMH Training Calendar](#)** is posted on-line.
- ⇒ **TIP – Training in Innovation and Practice** –The NC Council of Community Programs and the Administrative Services Organization, a group of providers, continue to offer training to help providers adapt to changing circumstances. For a list of currently scheduled training events and to register, go to www.nc-council.org.
- ⇒ **Mental Health Association offers various training opportunities to include QPR (Question, Persuade, and Refer) suicide prevention training. Please visit website <http://mhacentralcarolinas.org> or call 704-365-3454 for more information.**

WEB RESOURCES

- ⇒ [NC Division of MH/DD/SAS](#)
- ⇒ [NC Division of MH/DD/SAS Provider Endorsement Information](#)
- ⇒ [NC Division of MH/DD/SAS Implementation Updates](#)
- ⇒ [Mecklenburg AMH](#)
- ⇒ [AMH Hot Sheet Archive](#)
- ⇒ [1915 \(b\)\(c\) Waiver Updates from Division Medical Assistance](#)
- ⇒ [Comparison: NC Innovations and CAP-MR/DD Waivers](#)
- ⇒ [LME-MCO Appeal Process \(per federal CFR 438.400\)](#)
- ⇒ [AMH Provider Document Library](#)



Presents

Cognitive Behavioral Therapy Booster

10 hours of continuing education of cognitive education in cognitive Behavioral Therapy Training with a 3 hour online component.

**July 27th, 2012
8:30am-5pm**

--LOCATION: The University of North Carolina at Charlotte 9201 University City Boulevard Charlotte, NC 28223-0001. Training will take place in the College of Education Building room 203.

REGISTRATION: Register online: www.genesisproject1.org (Registration fees will be payable via PayPal)

***Total training hours: 12**

****Cost: \$100.00**

****Plus: \$10 fee for CEU's.**

****Recording device needed. Examples are a cell phone, a tape recorder, iPod/iPod, etc.**



Dr. Susan Furr is a licensed psychologist who received her PhD from the University of North Carolina at Chapel Hill. She has worked as a school counselor, a psychologist at a university counseling center, and currently is a Professor in the Department of Counseling at the University of North Carolina at Charlotte. She has published on topics such as college student suicide, grief and loss counseling, career counseling, and development of counseling students. A major focus of her training has been in the area of cognitive therapy.

MPC

Mecklenburg Provider Council

For more information on this Cognitive Behavioral Therapy Supervision Training, please contact, Lisa Davis, Training Director at Genesis Project 1, Inc. (704.596.0505)[ldavis@genesisproject1.org]

TRAINING REGISTRATION FORM

Training Title:

CBT Booster TrainingJuly 27th, 2012

Complete the information below and fax this form to Lisa Davis at (704) 596-0507.

Please type or print

AGENCY INFORMATION

Agency's Name: _____

Agency's Contact Person: _____

Contact Person Phone: _____ Email: _____

-Participant (s) attending

Name (please print)	Email Address (Required)	Phone Number

*If there are more than 12 participants from your agency, please use another registration form.

SESSION & ATTENDEE INFORMATION

(Limit 30 per session. See the training flyer for times and locations)

	Number purchasing	Total Cost
Training Fee \$100.00		
CEU's \$10.00		
TOTAL FEE		

PAYMENT INFORMATION

We accept payment through Pay-pal, certified checks and Money orders.

Training is limited to 50 persons per session. All required Handouts are sent to participants prior to the training date and participants are responsible for bringing to the session. The training fee is nonrefundable and cannot be applied to a future training. Register early, space is limited. Participants who arrive more than 15 minutes late will NOT be admitted to the training session. Full attendance and active participation is expected in order to receive training certificate (i.e. No partial credit will be given.) Disruptive participants will be asked to leave the class. The Provider

MPC

Mecklenburg Provider Council

Network does not keep certificate copies so all participants will need to make all necessary copies and storage arrangements as copies of lost certificates will NOT be available in the future. Please note that these sessions will be videotaped and all participants will be asked to sign a consent form.

Should you have any questions, please contact Lisa Davis or Sharday Black at (704) 596-0505